



SAND2013-1961P

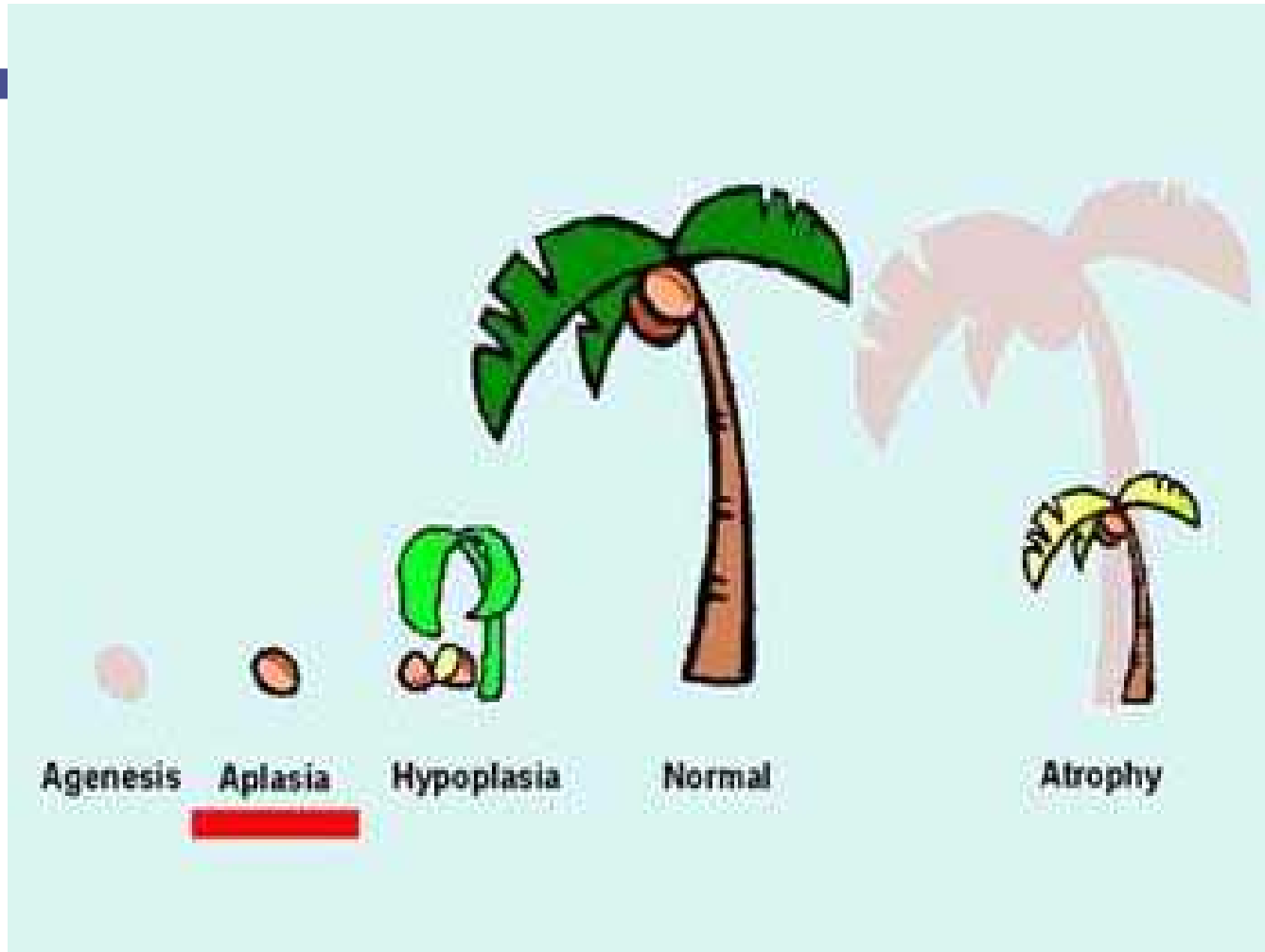


# DISTURBANCES OF GROWTH



Sandia National Laboratories is a multi-program laboratory managed and operated by Sandia Corporation, a wholly owned subsidiary of Lockheed Martin Corporation, for the U.S. Department of Energy's National Nuclear Security Administration under contract DE-AC04-94AL85000.SAND 201







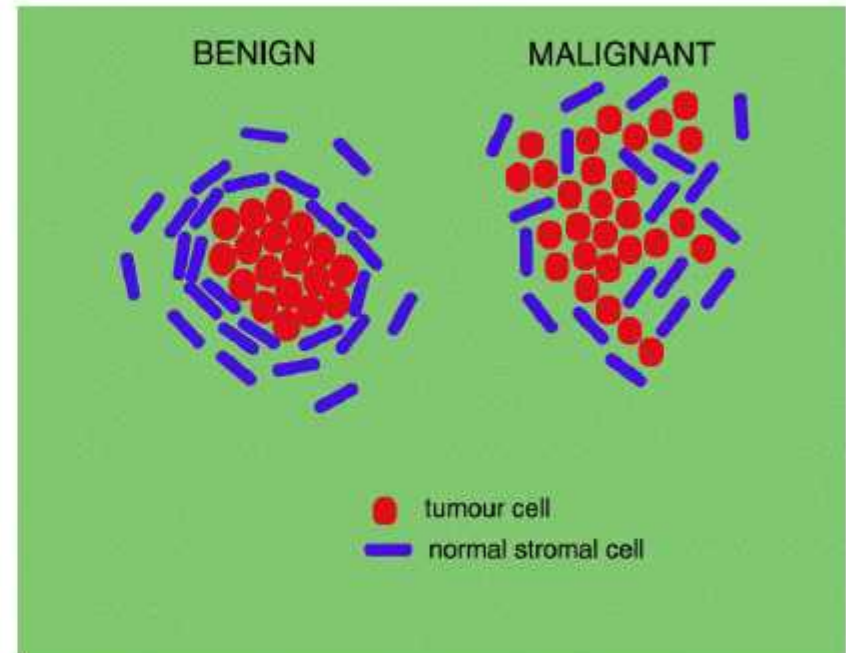
# Biological Behavior

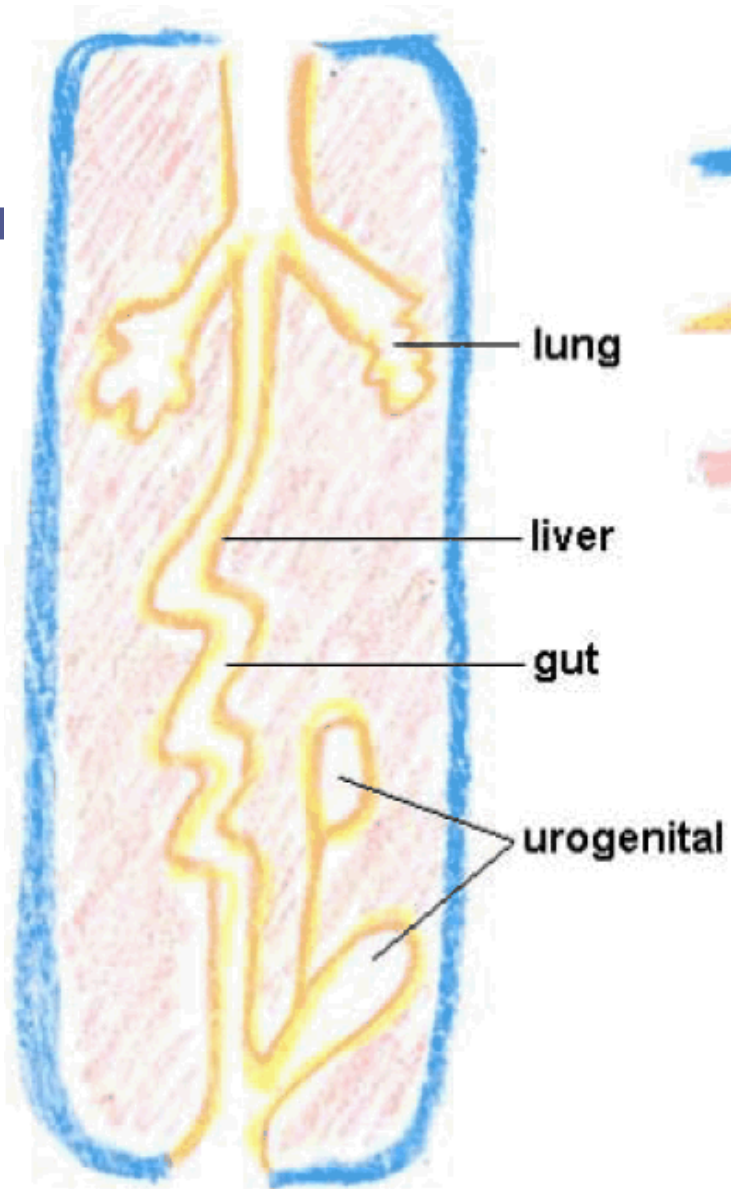
## □ **Benign** tumors




- Slow growth
- Expansile
- Depending on their location, they can be just as life threatening as malignant lesions

## □ **Malignant** tumors

- Rapid growth
- Aggressive
- Invasive





-  : ectoderm origin  
(all EPITHELIAL)
-  : endoderm origin  
(all EPITHELIAL)
-  : mesoderm origin  
(all MESENCHYMAL)



# Nomenclature

## Mesenchymal

- **Benign**
  - oma
- **Malignant**
  - sarcoma

## Epithelial

- **Benign**
  - oma
- **Malignant**
  - carcinoma



# Metastasis: the process

