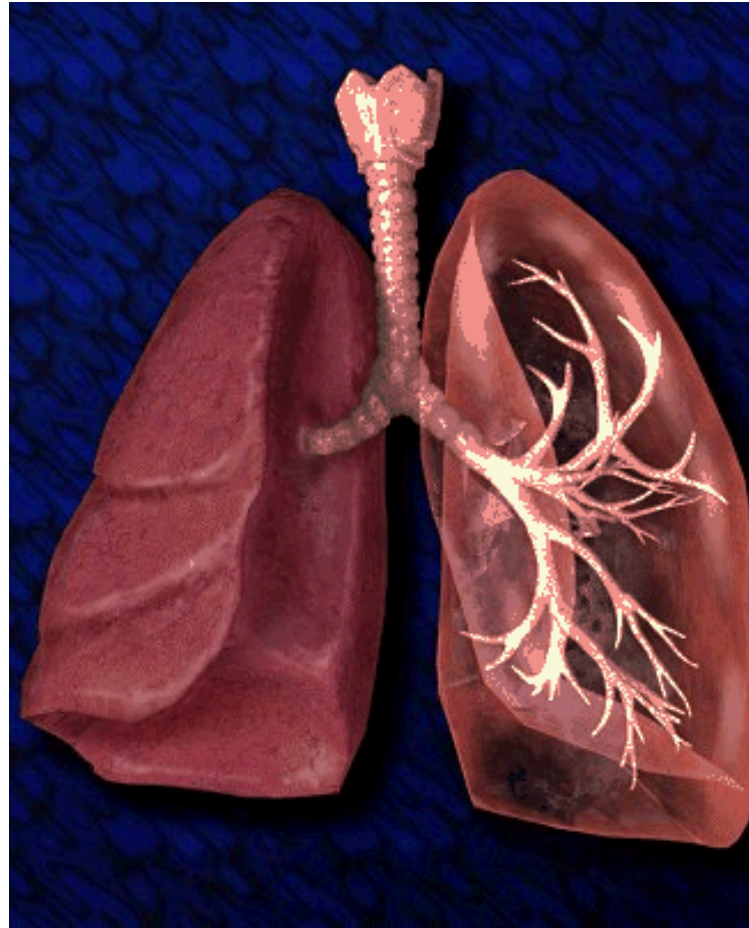




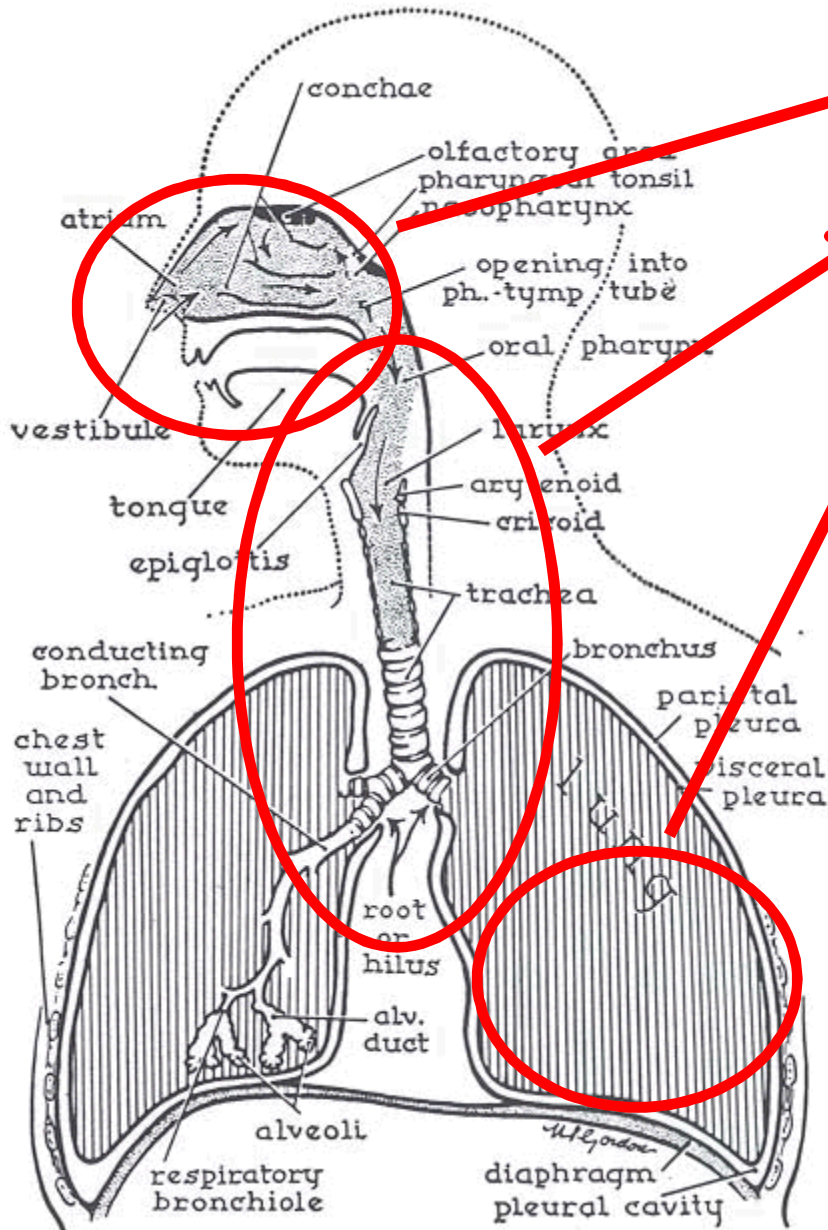
PATHOLOGY OF THE RESPIRATORY SYSTEM

SAND2013-1892P



Sandia National Laboratories is a multi-program laboratory managed and operated by Sandia Corporation, a wholly owned subsidiary of Lockheed Martin Corporation, for the U.S. Department of Energy's National Nuclear Security Administration under contract DE-AC04-94AL85000.SAND 201

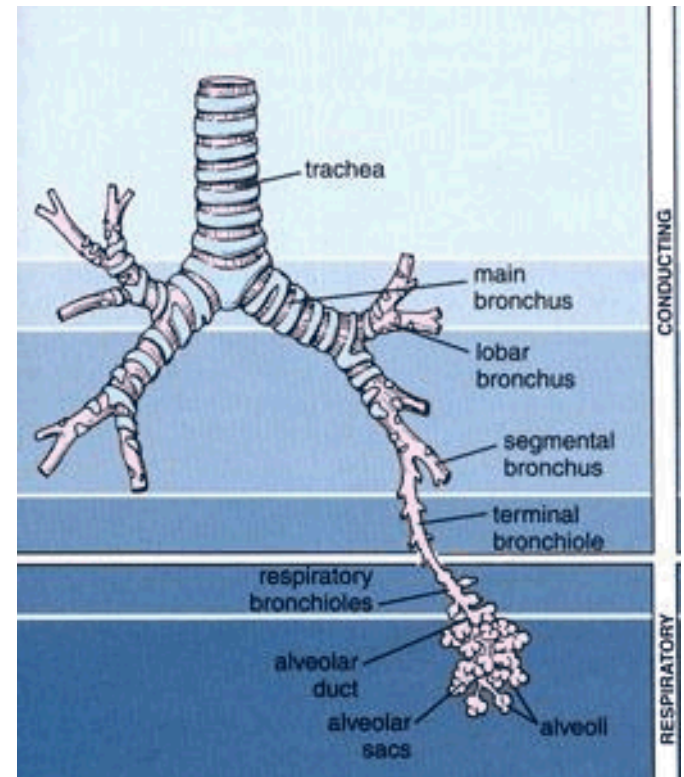


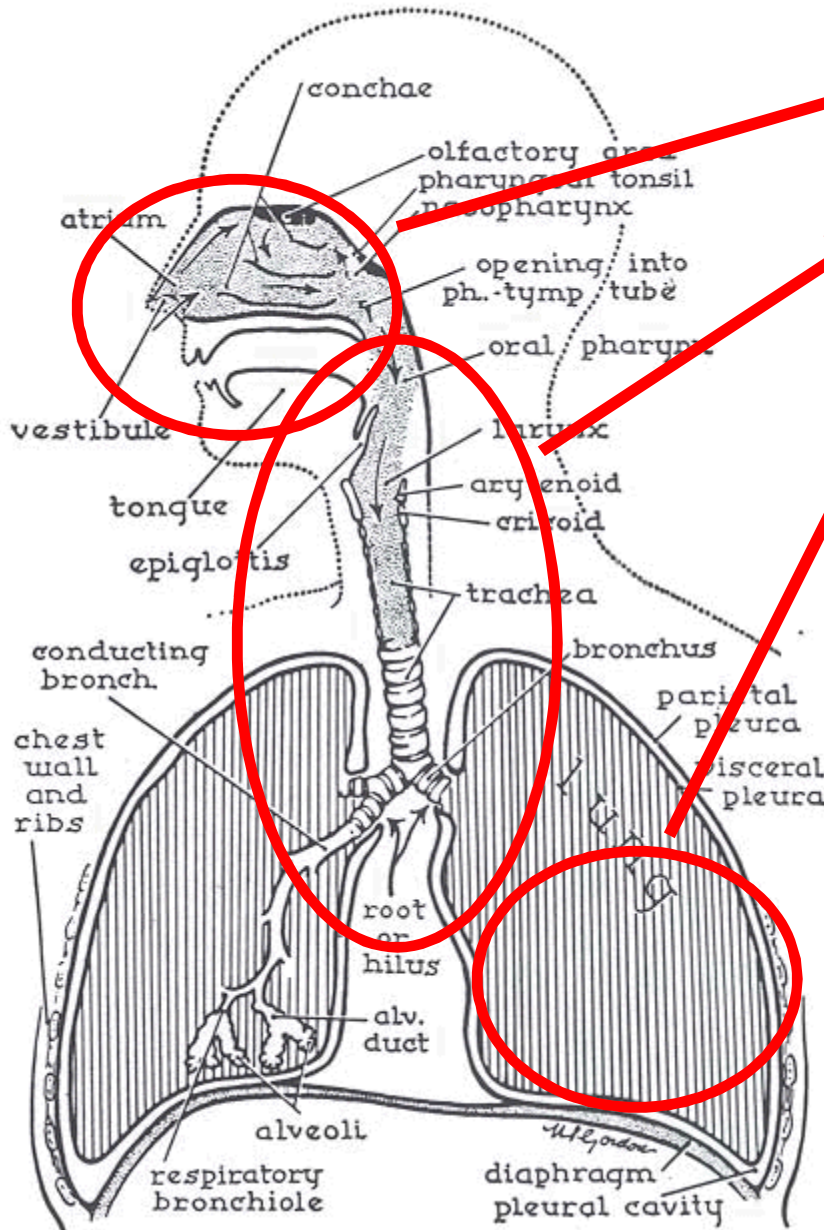


Nasal passages, pharynx

Trachea, bronchi

Bronchioles, lung

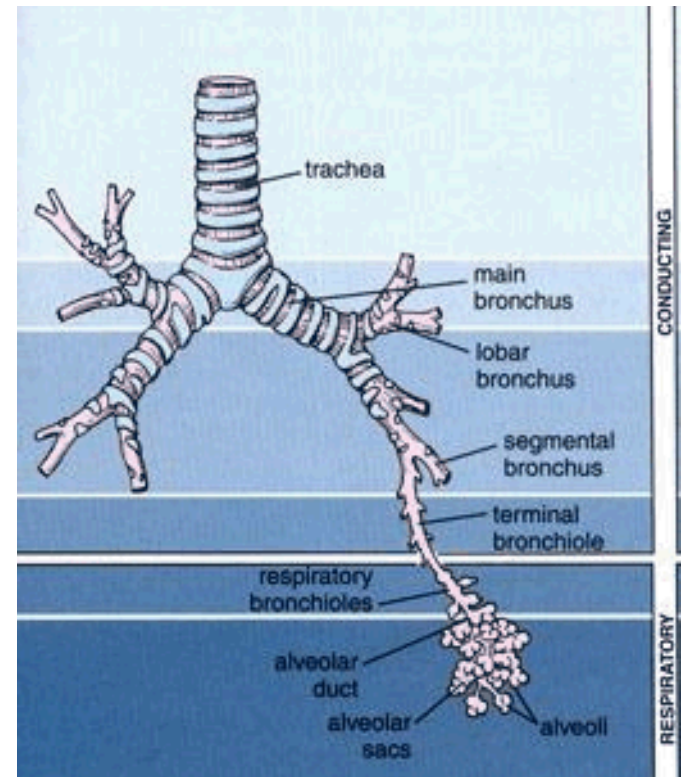


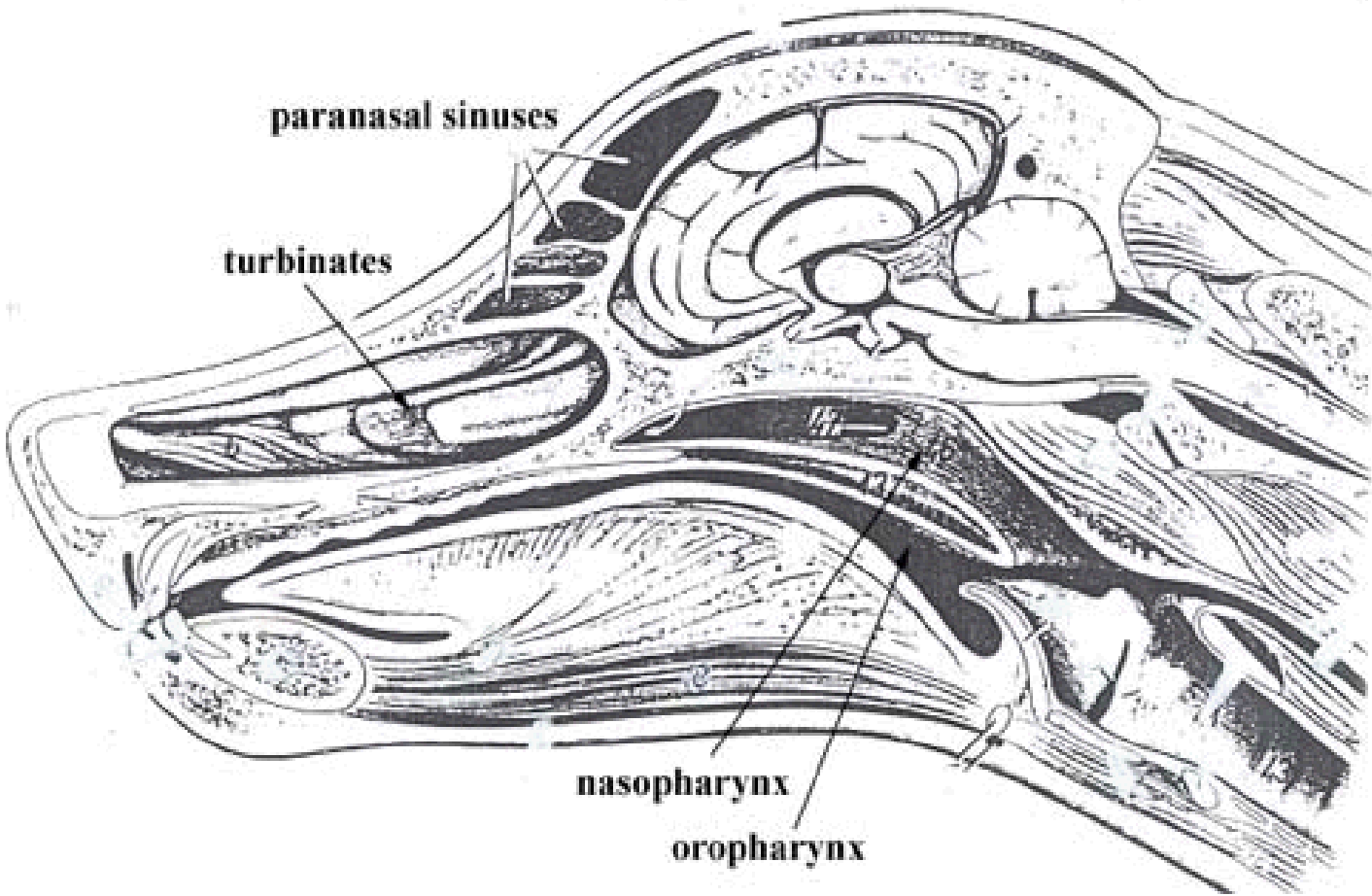


Nasal passages, pharynx

Trachea, bronchi

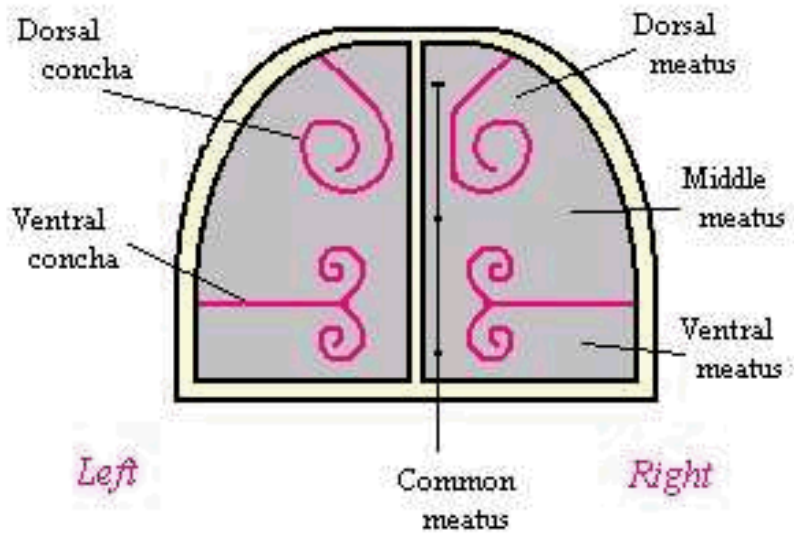
Bronchioles, lung







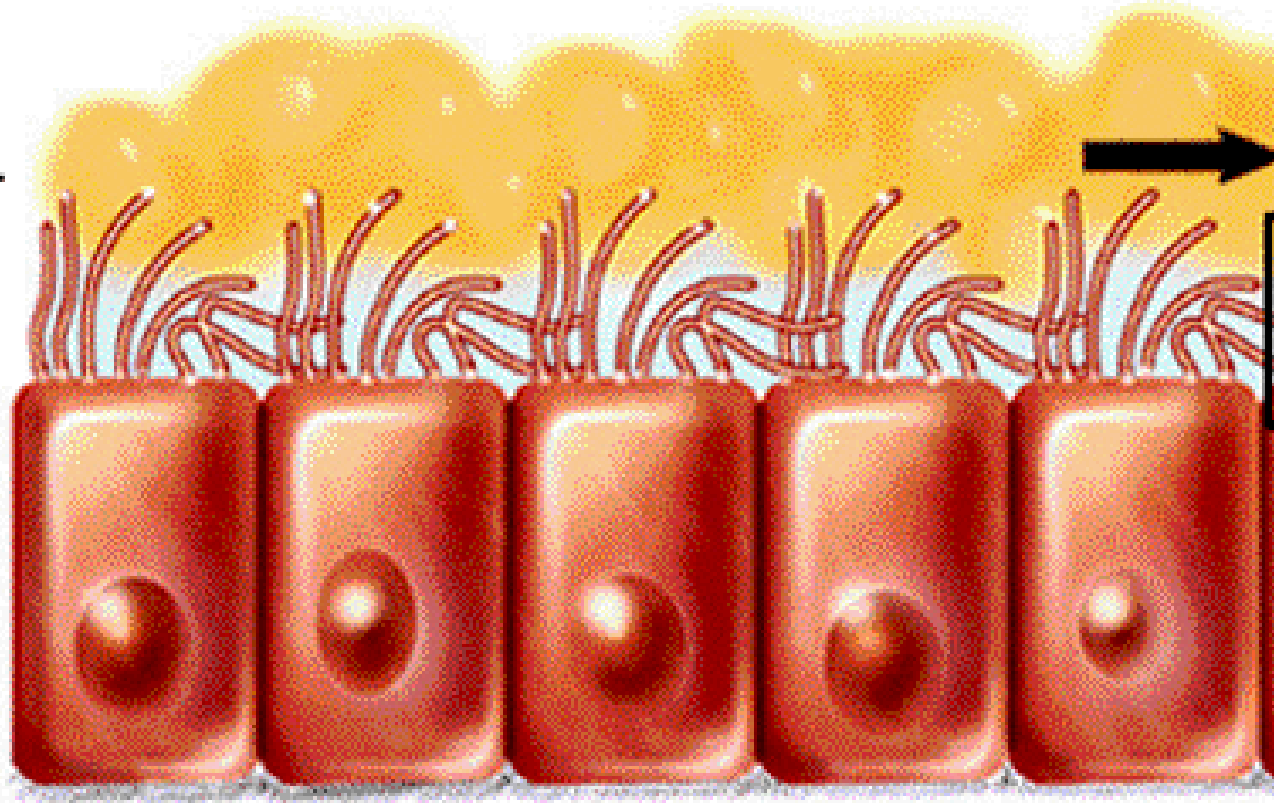
Schematic section through the Nasal Cavity

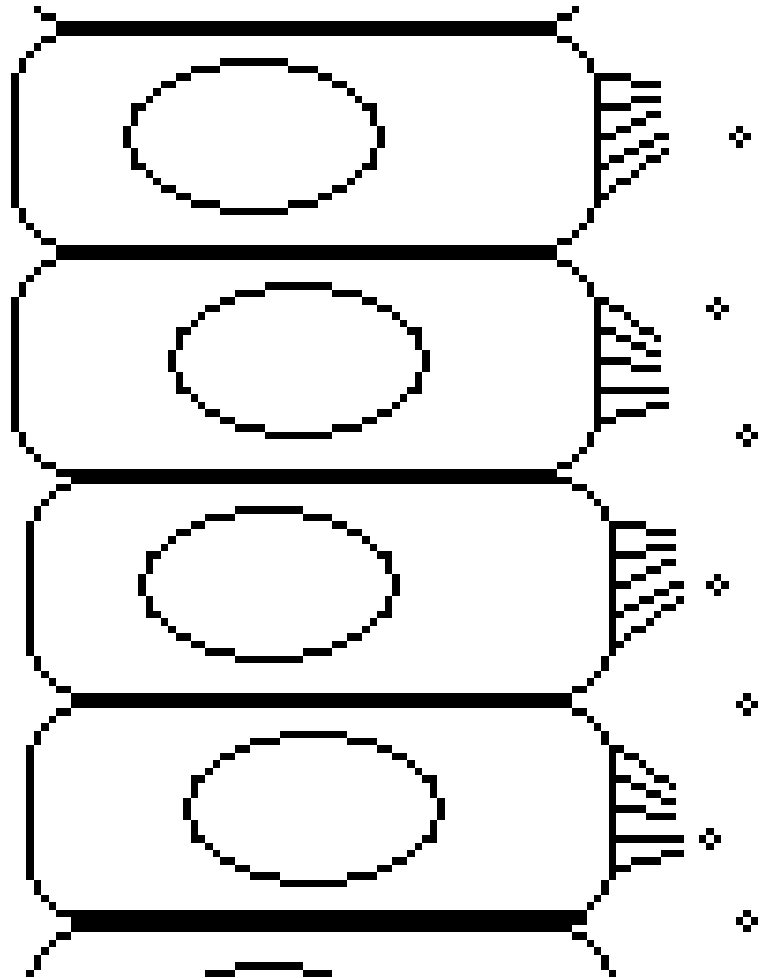


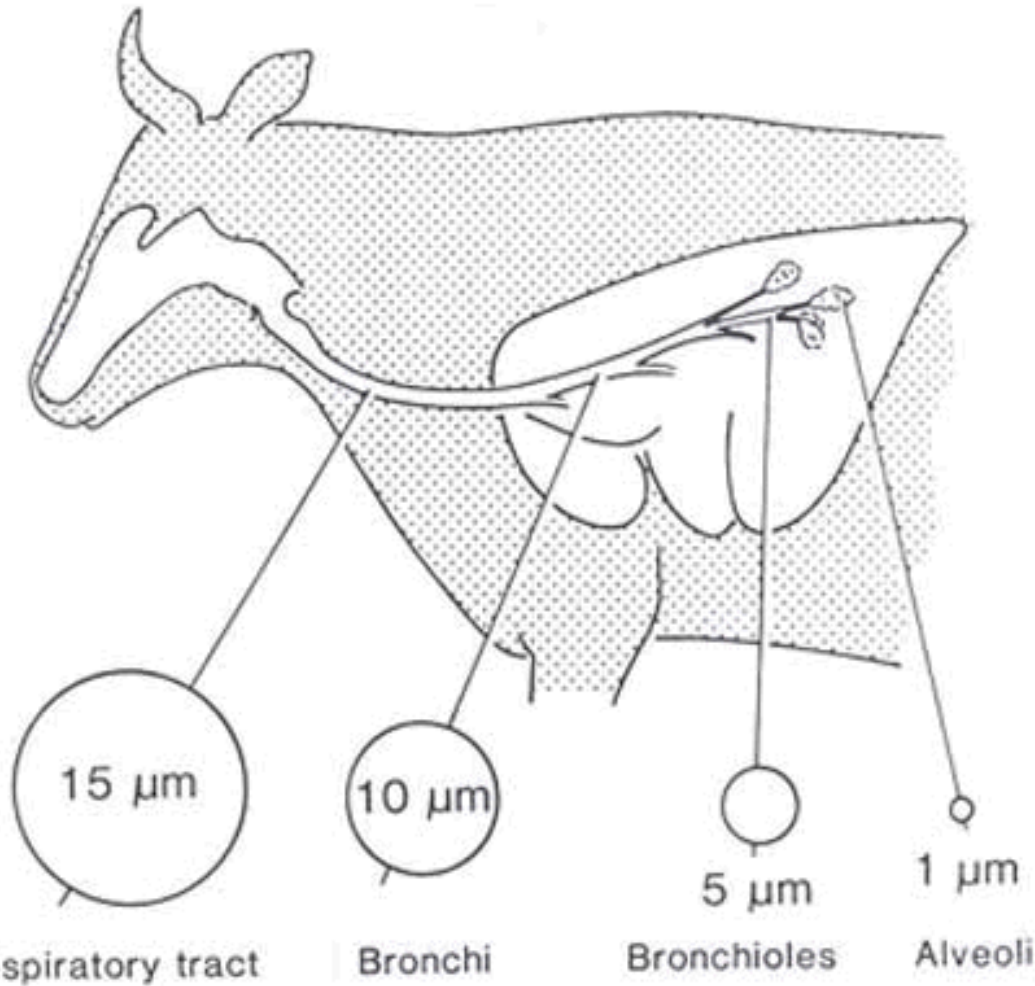


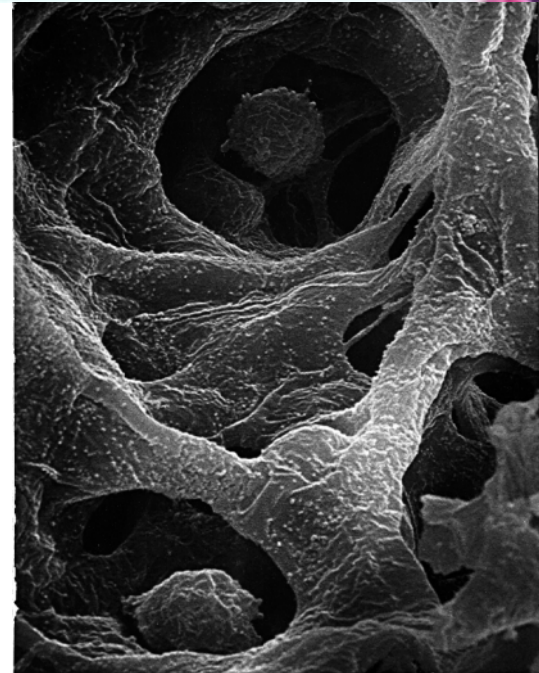
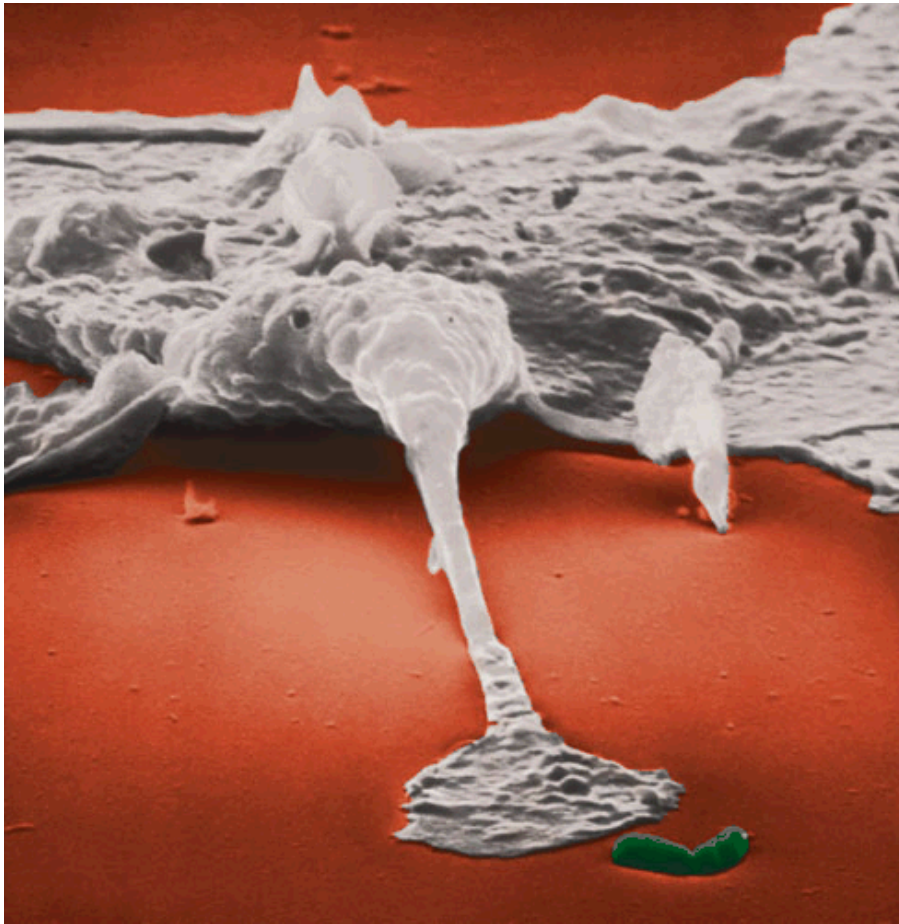
Mucus—

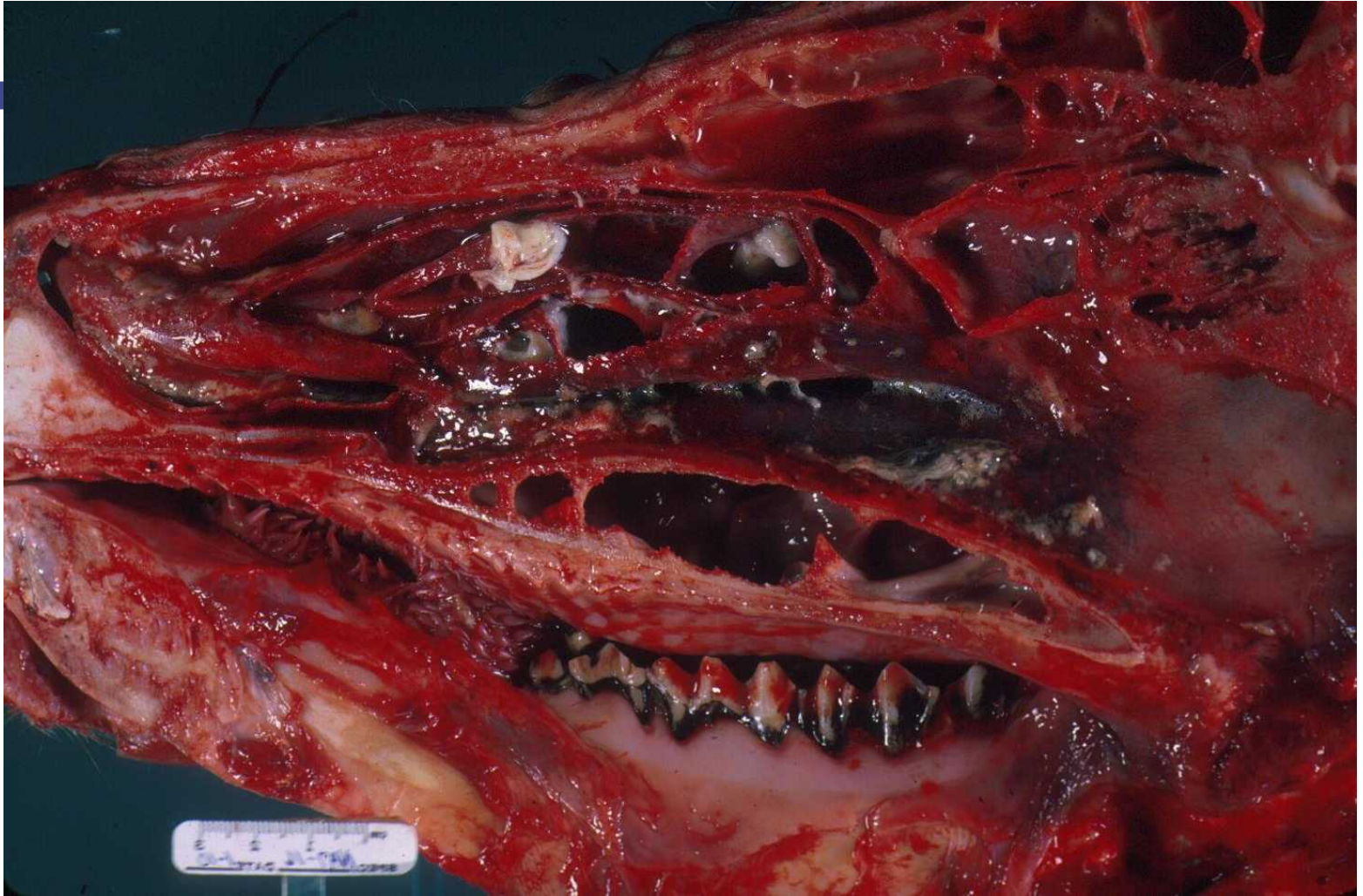
**Epithelial
cells**





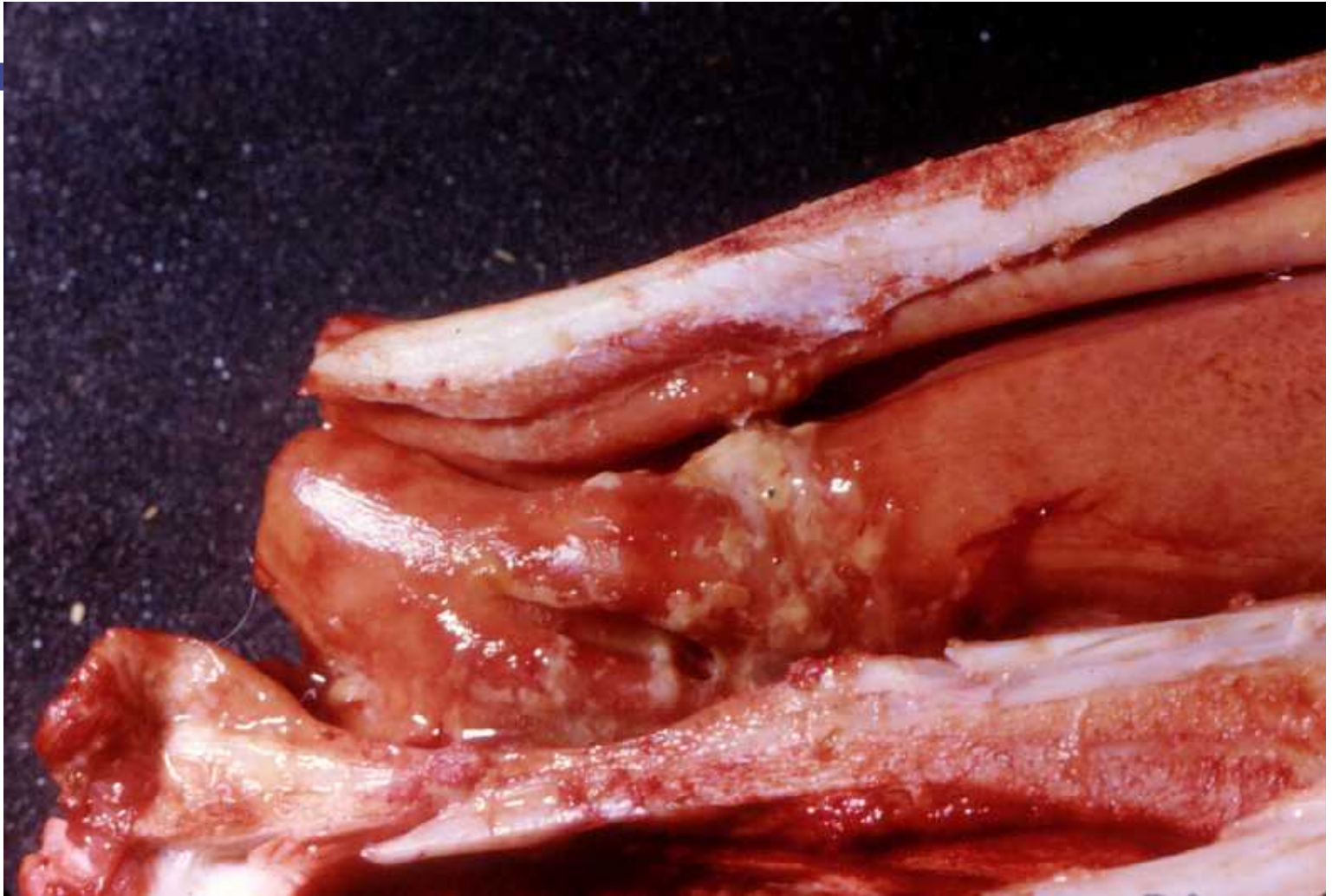


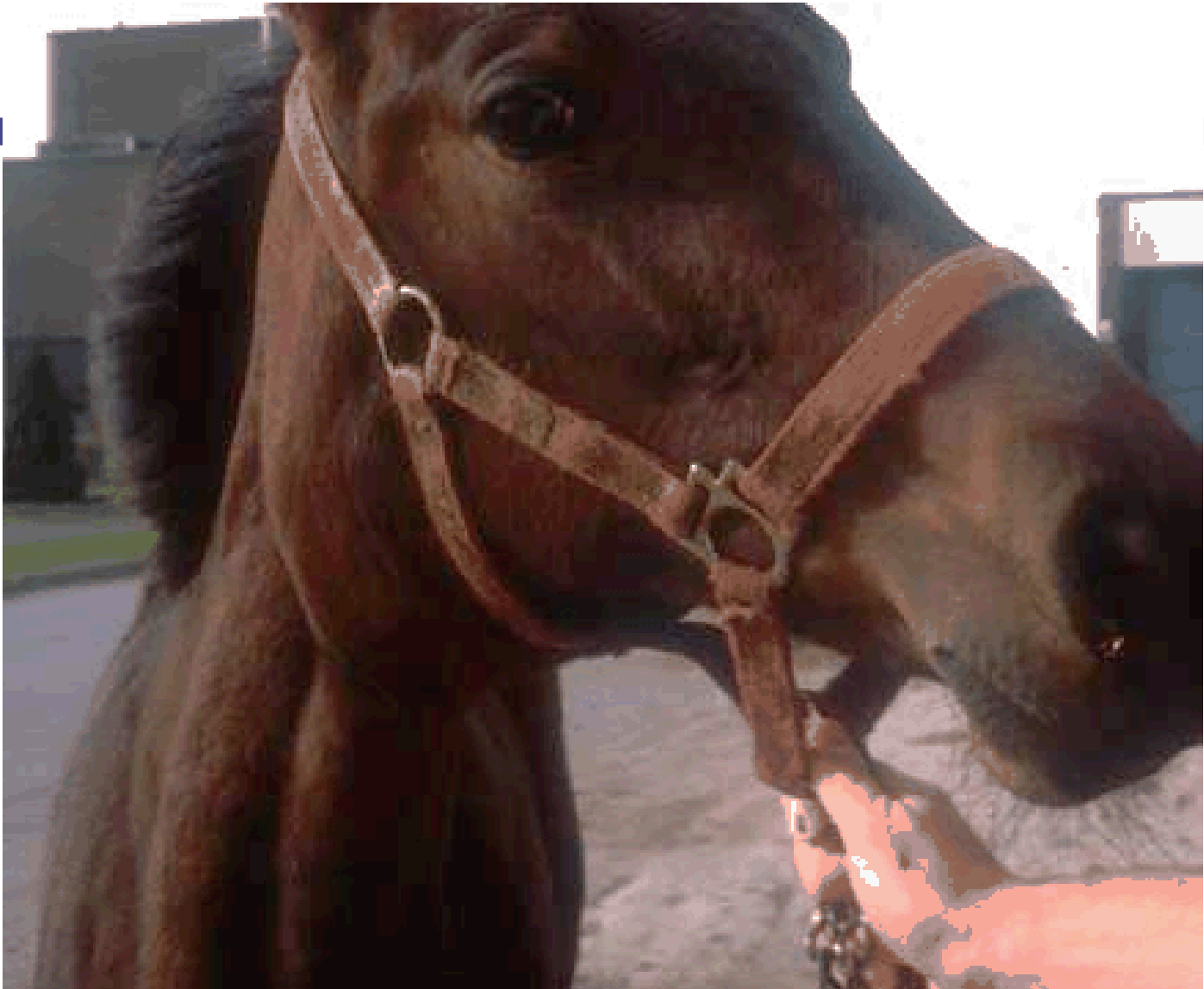




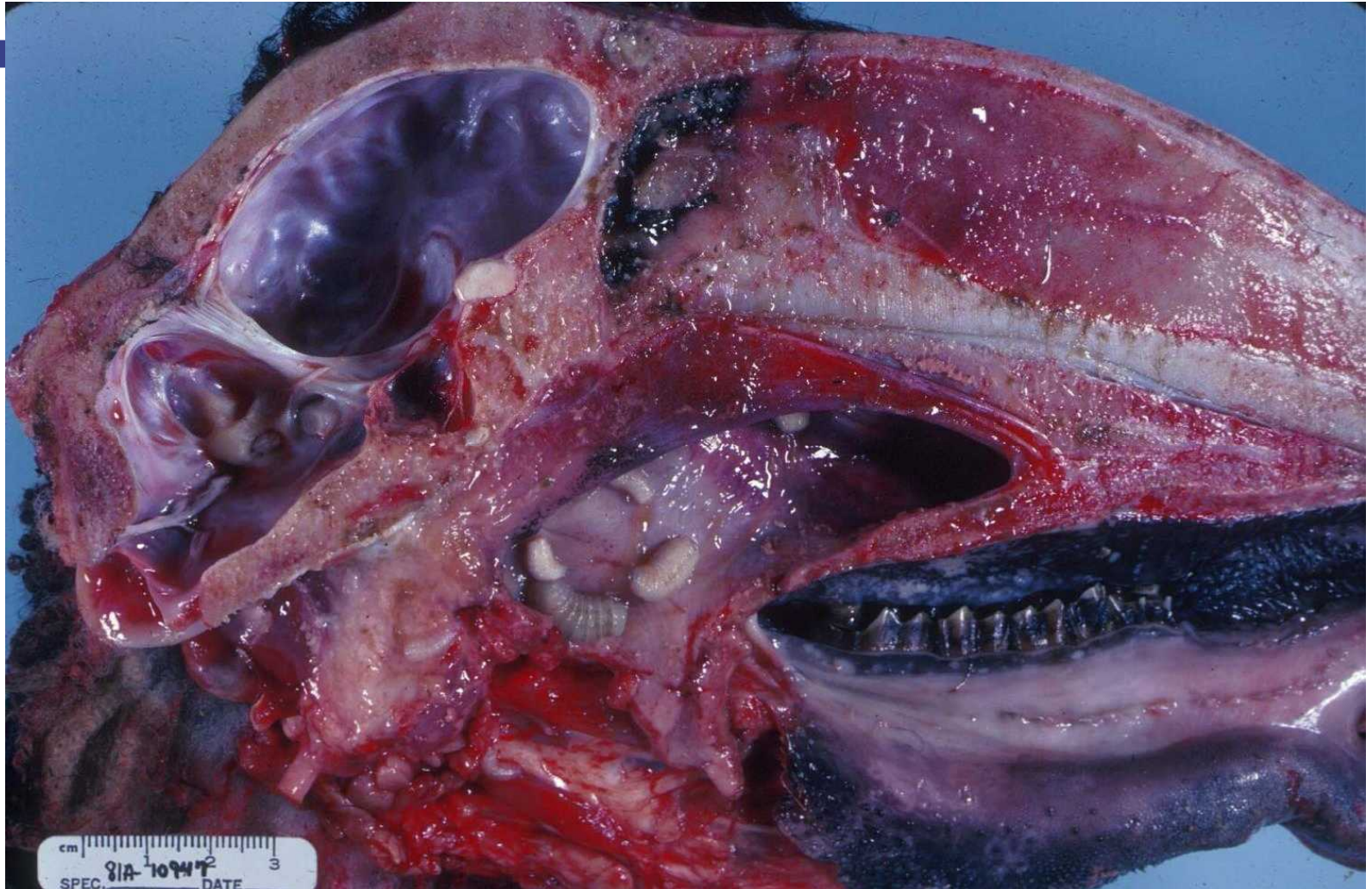




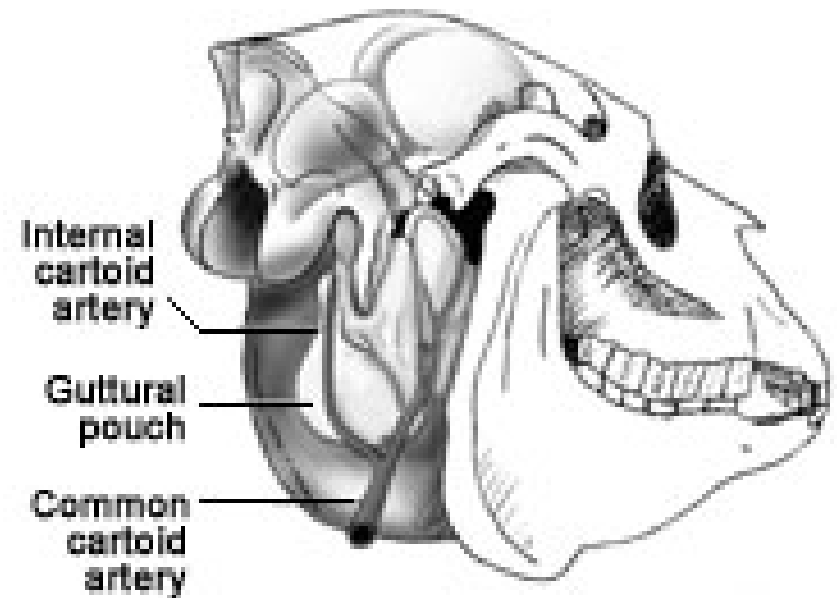


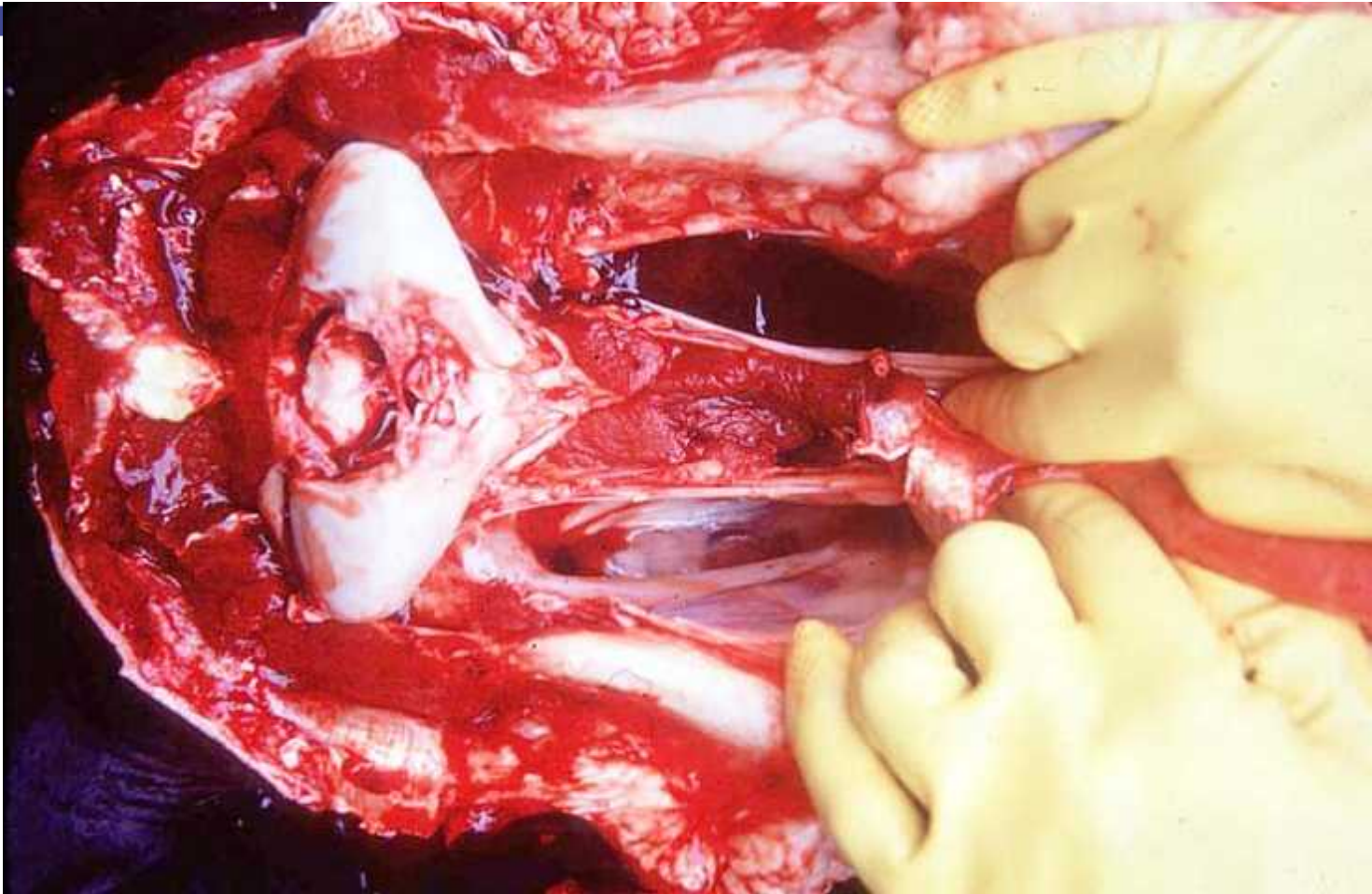


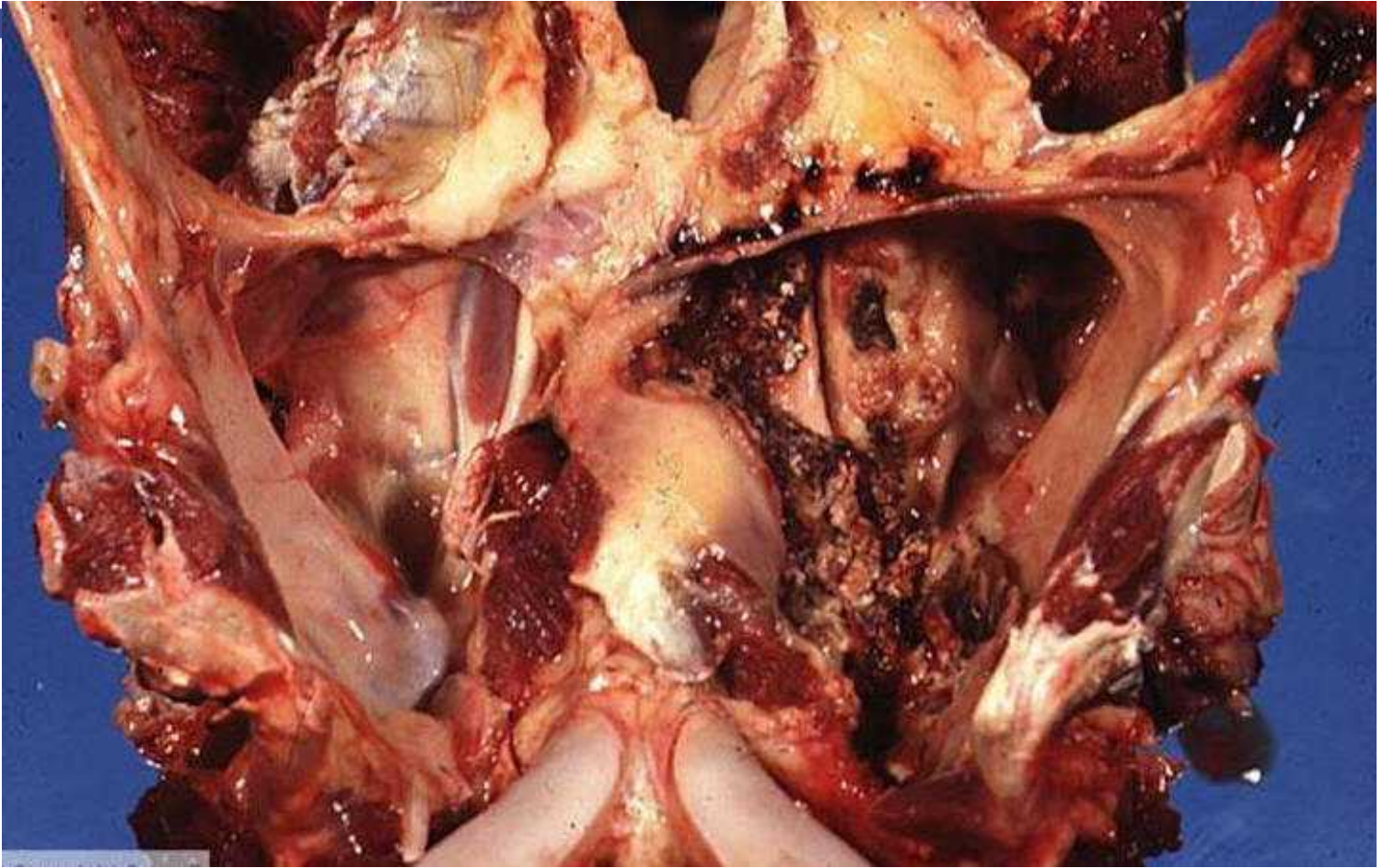


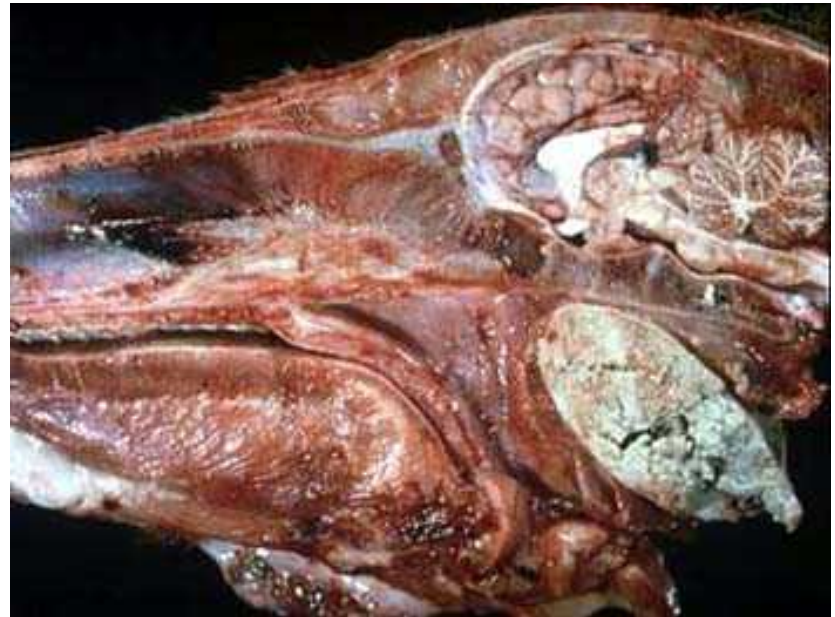
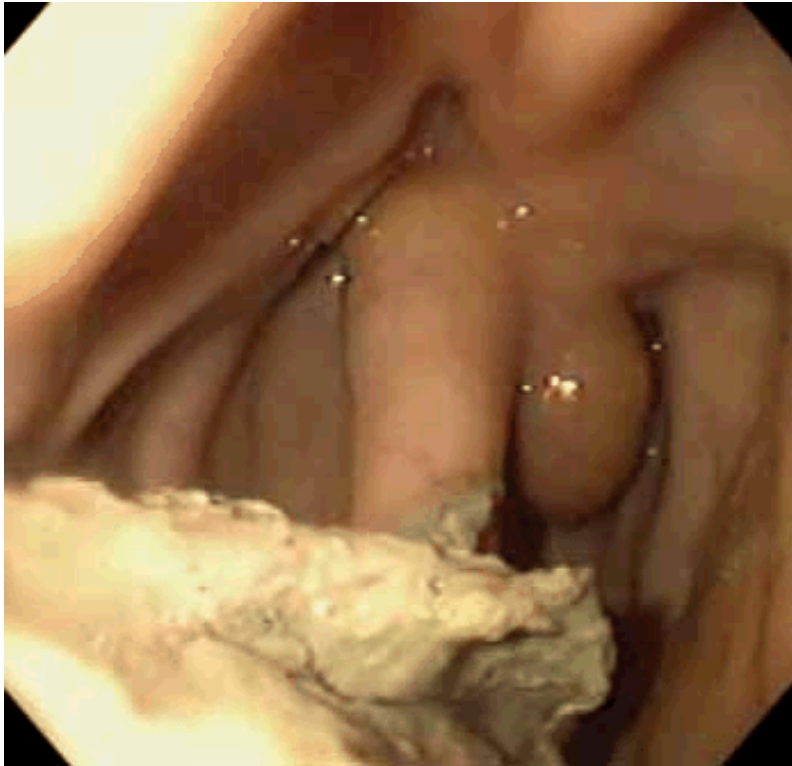


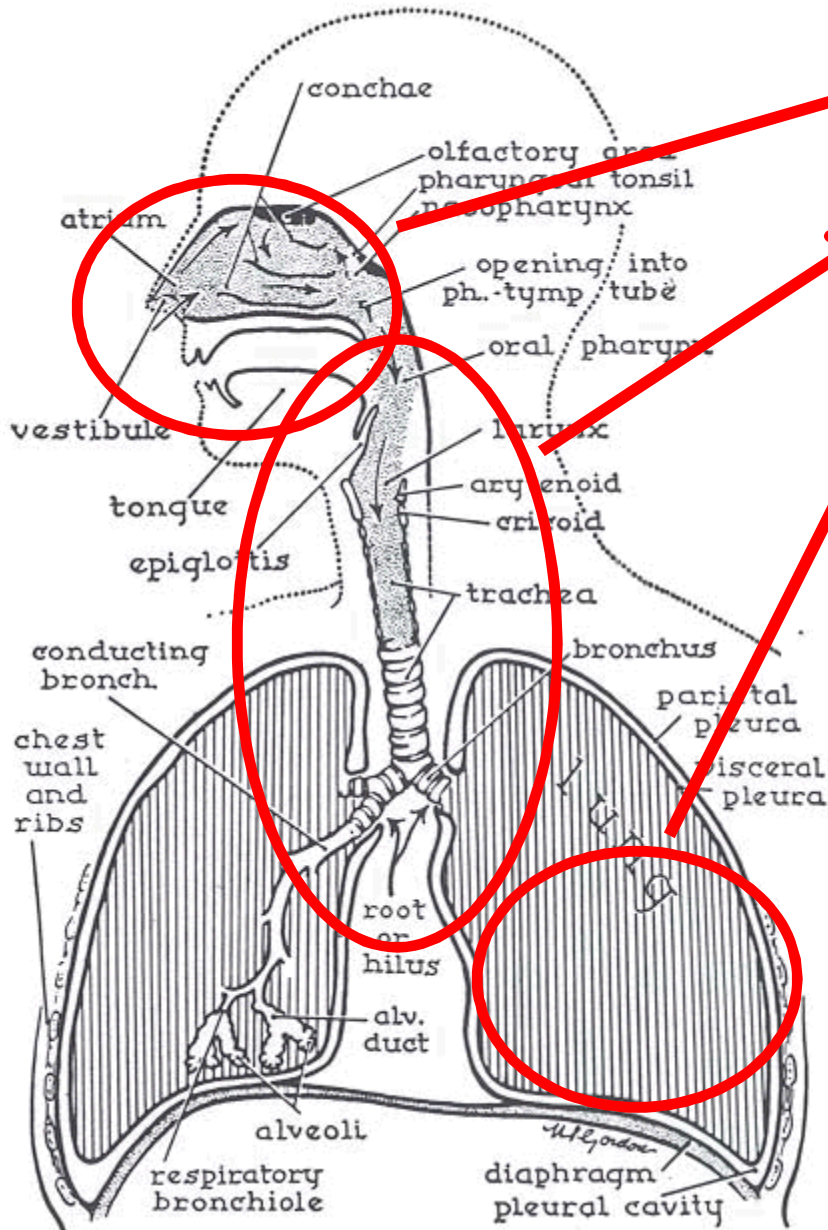








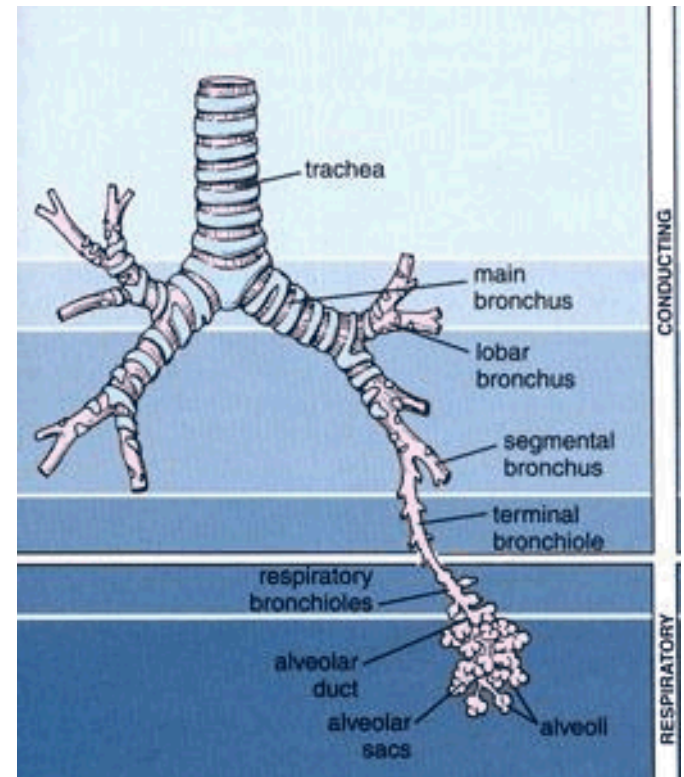


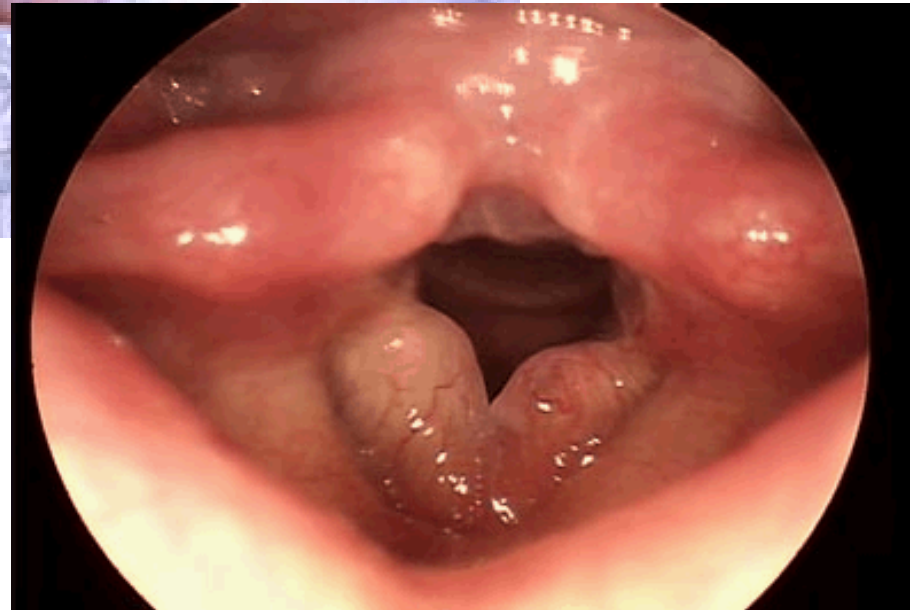
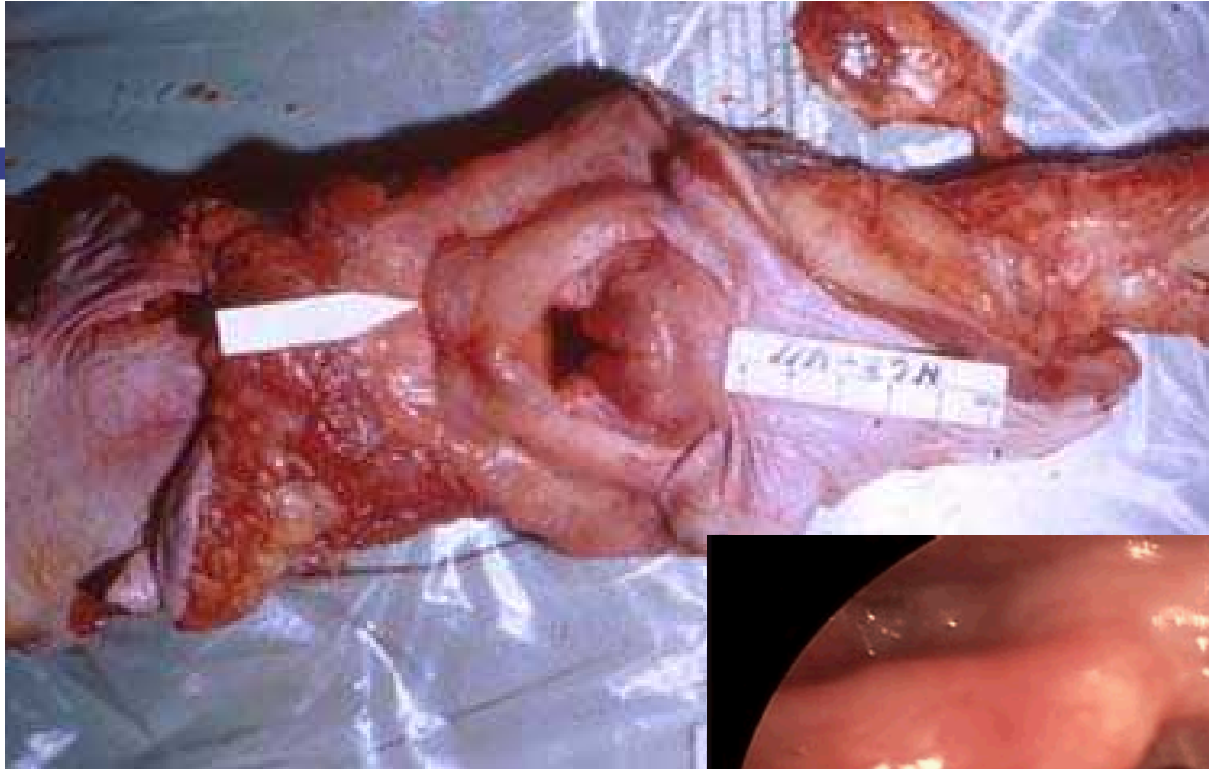


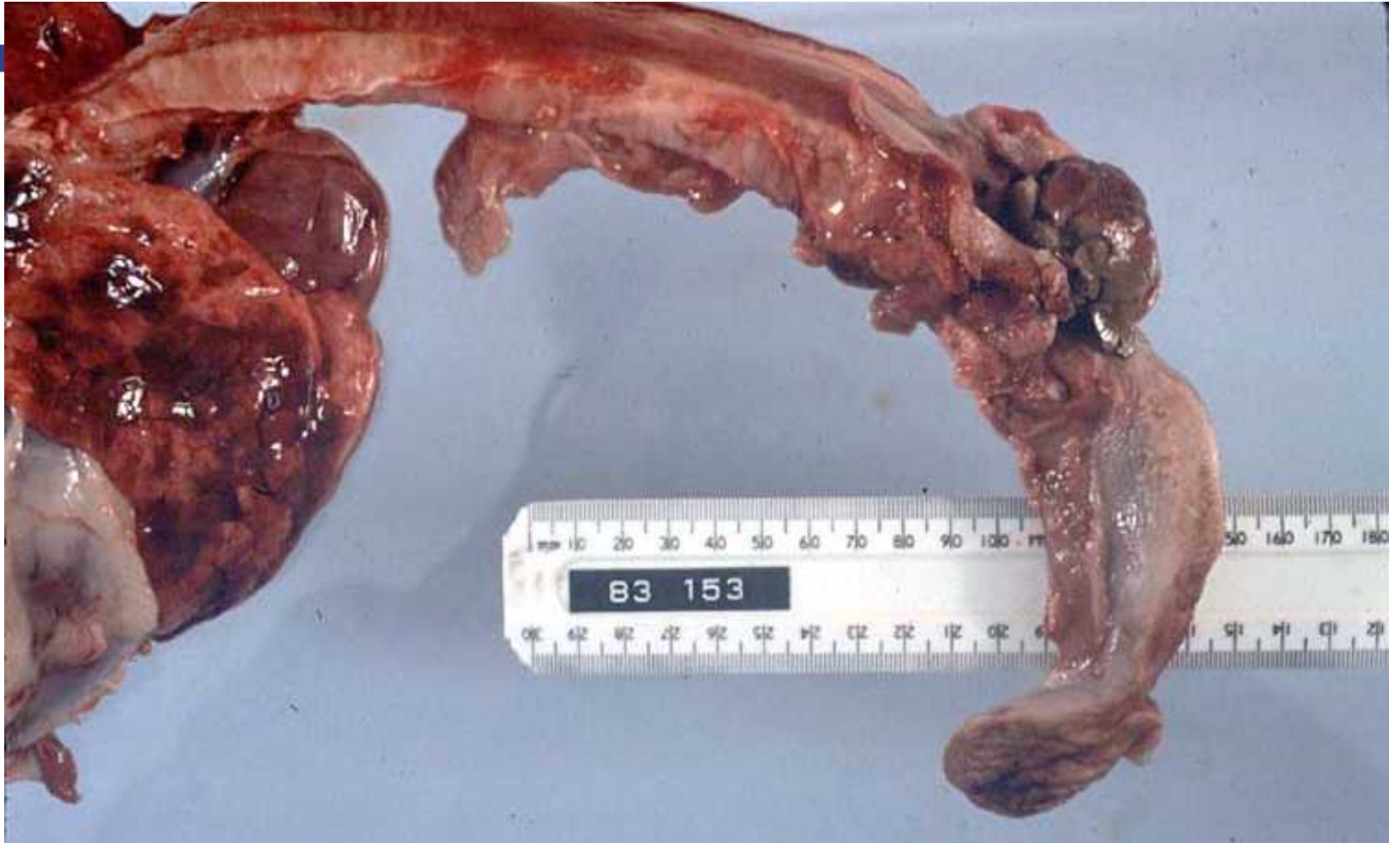
Nasal passages, pharynx

Trachea, bronchi

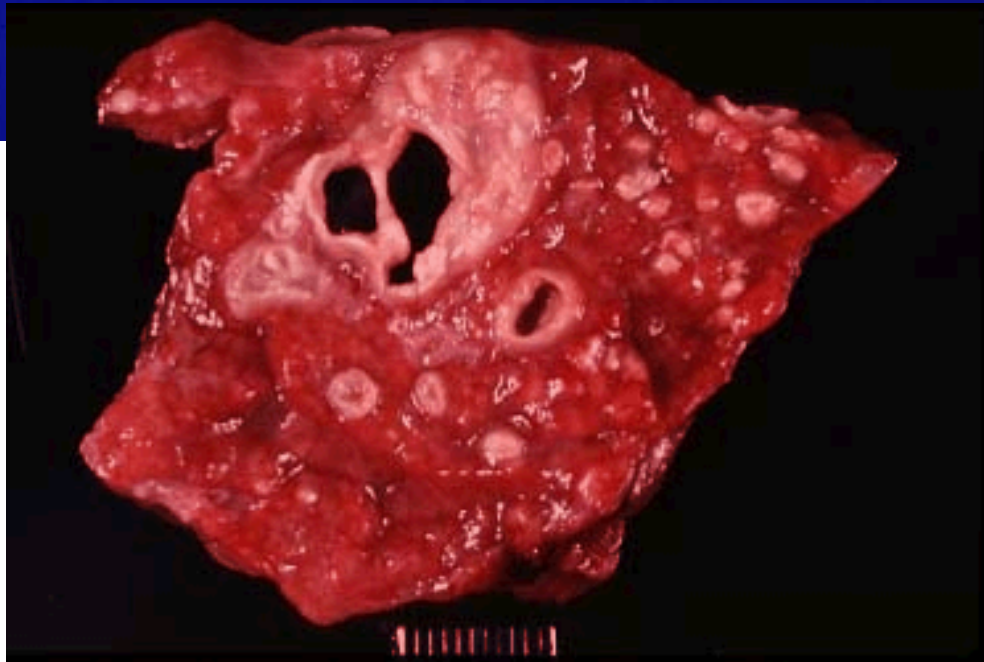
Bronchioles, lung

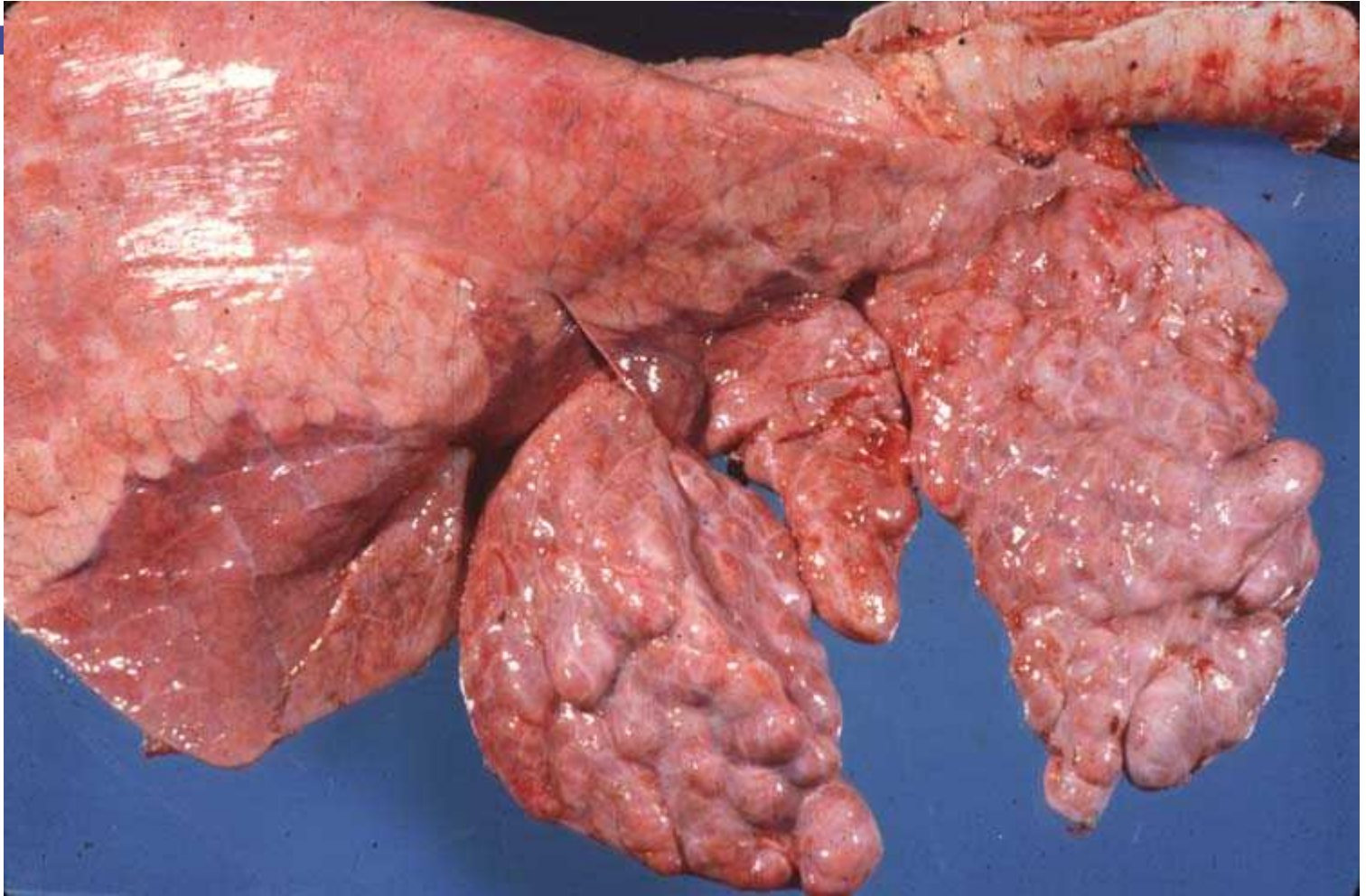




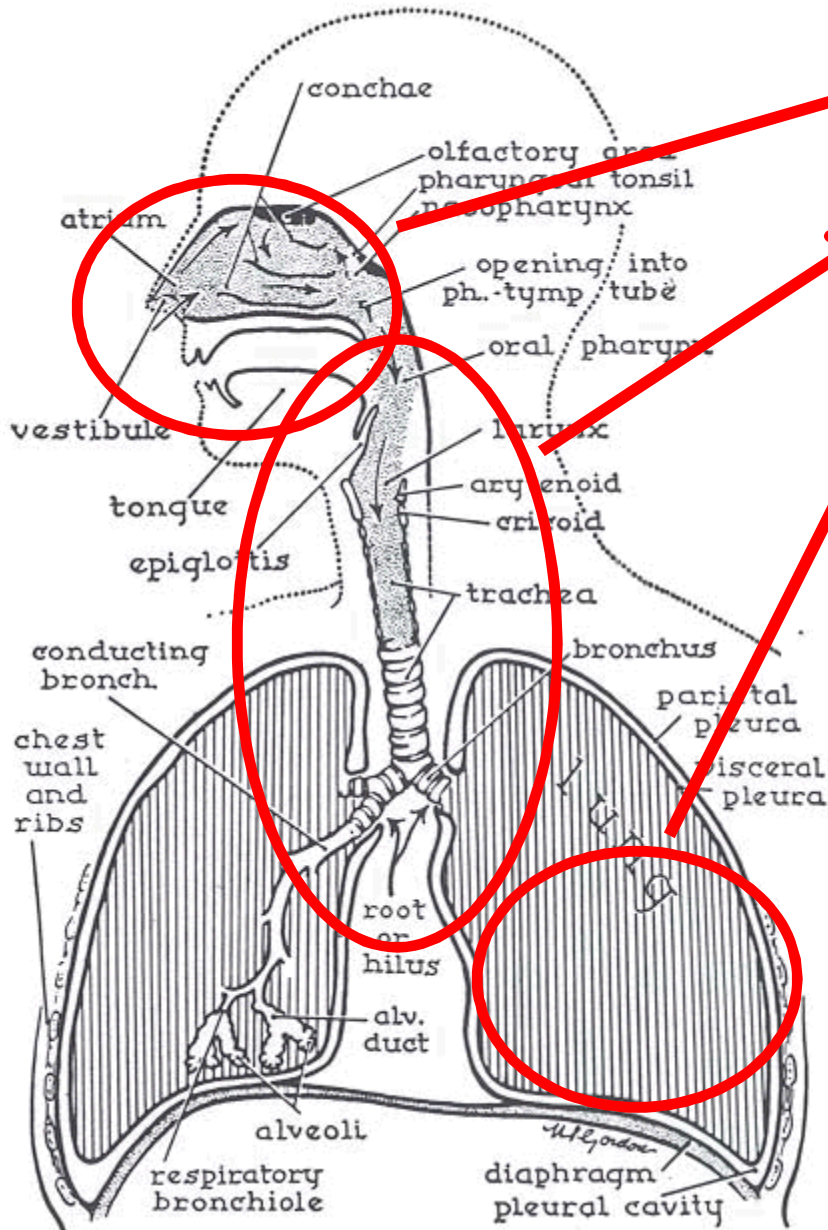








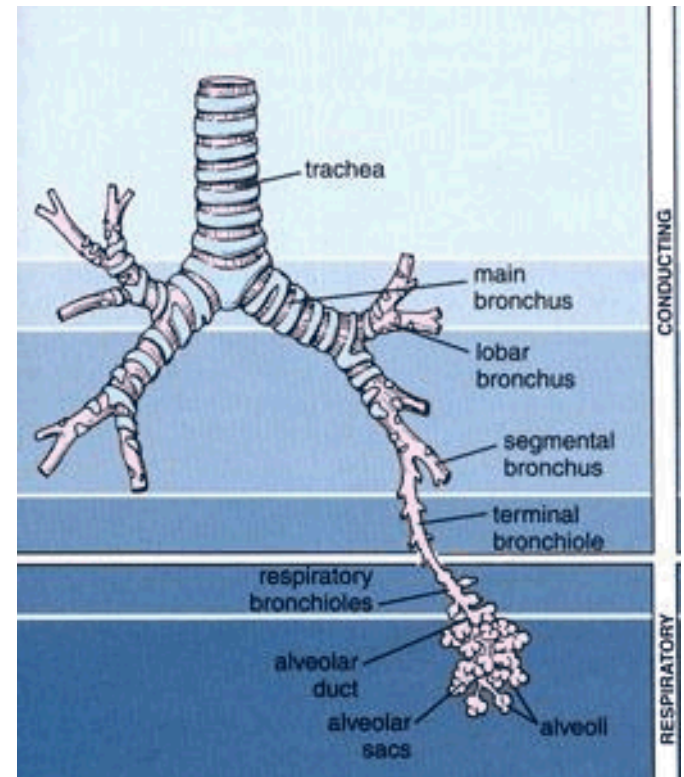


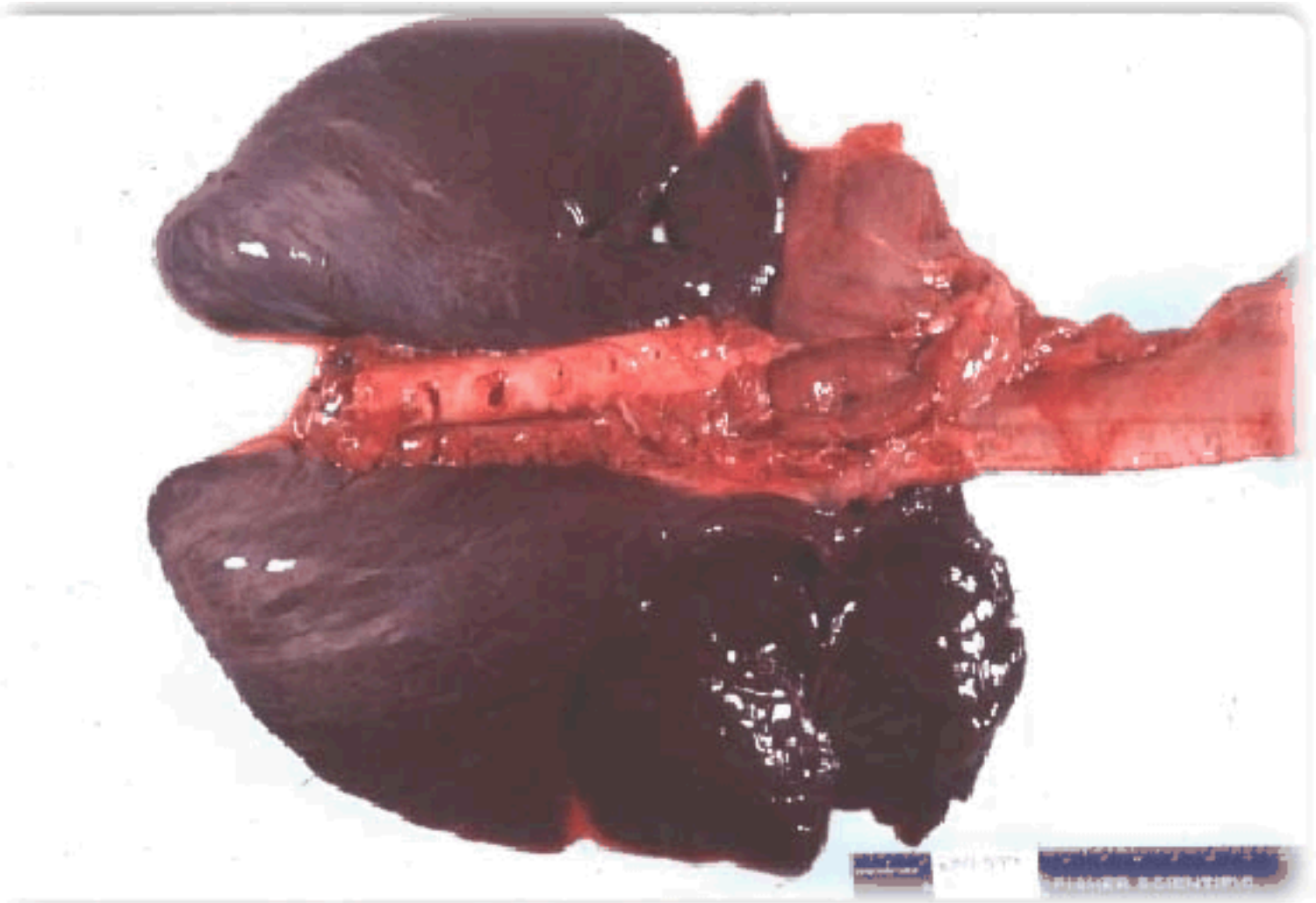


Nasal passages, pharynx

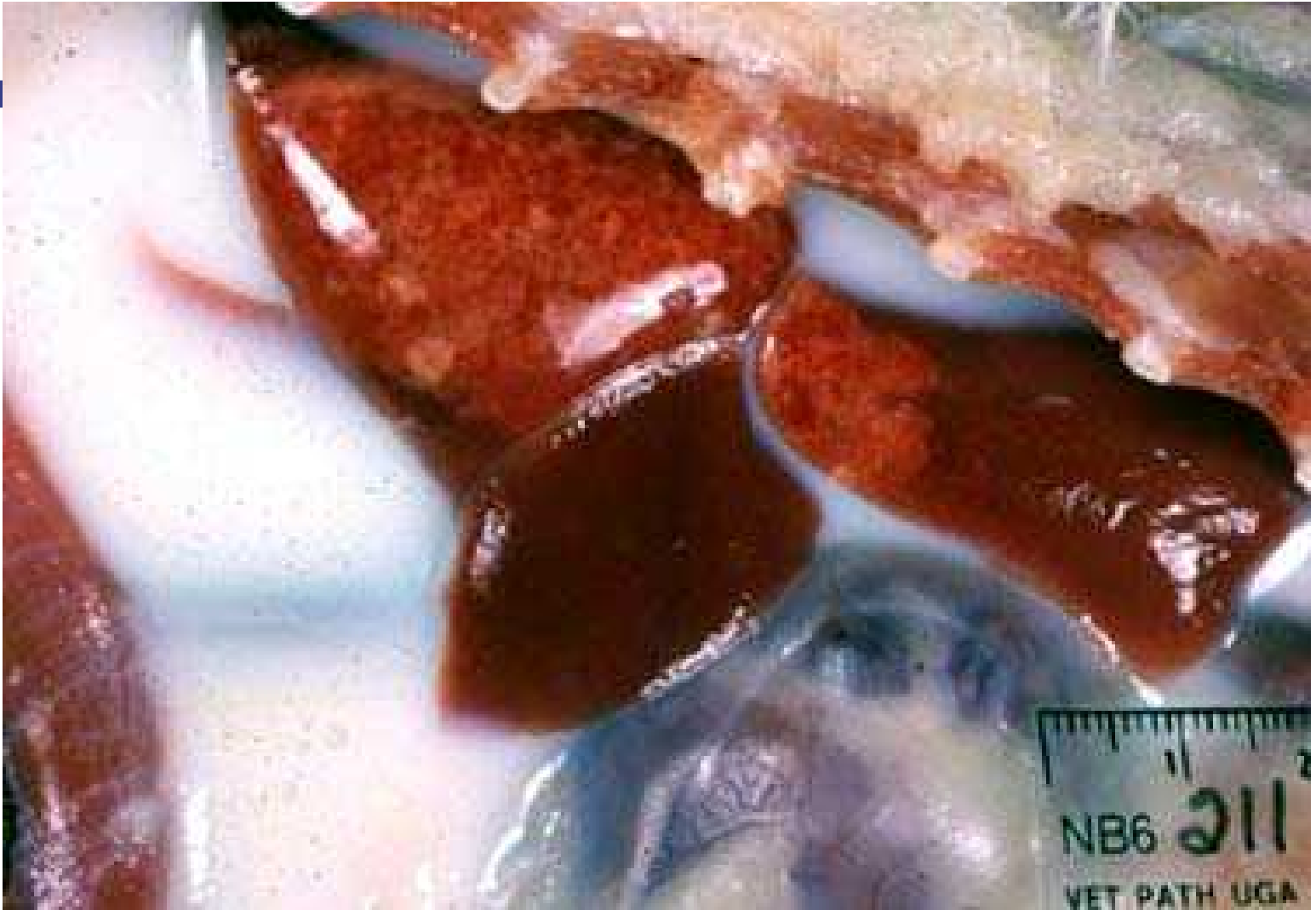
Trachea, bronchi

Bronchioles, lung

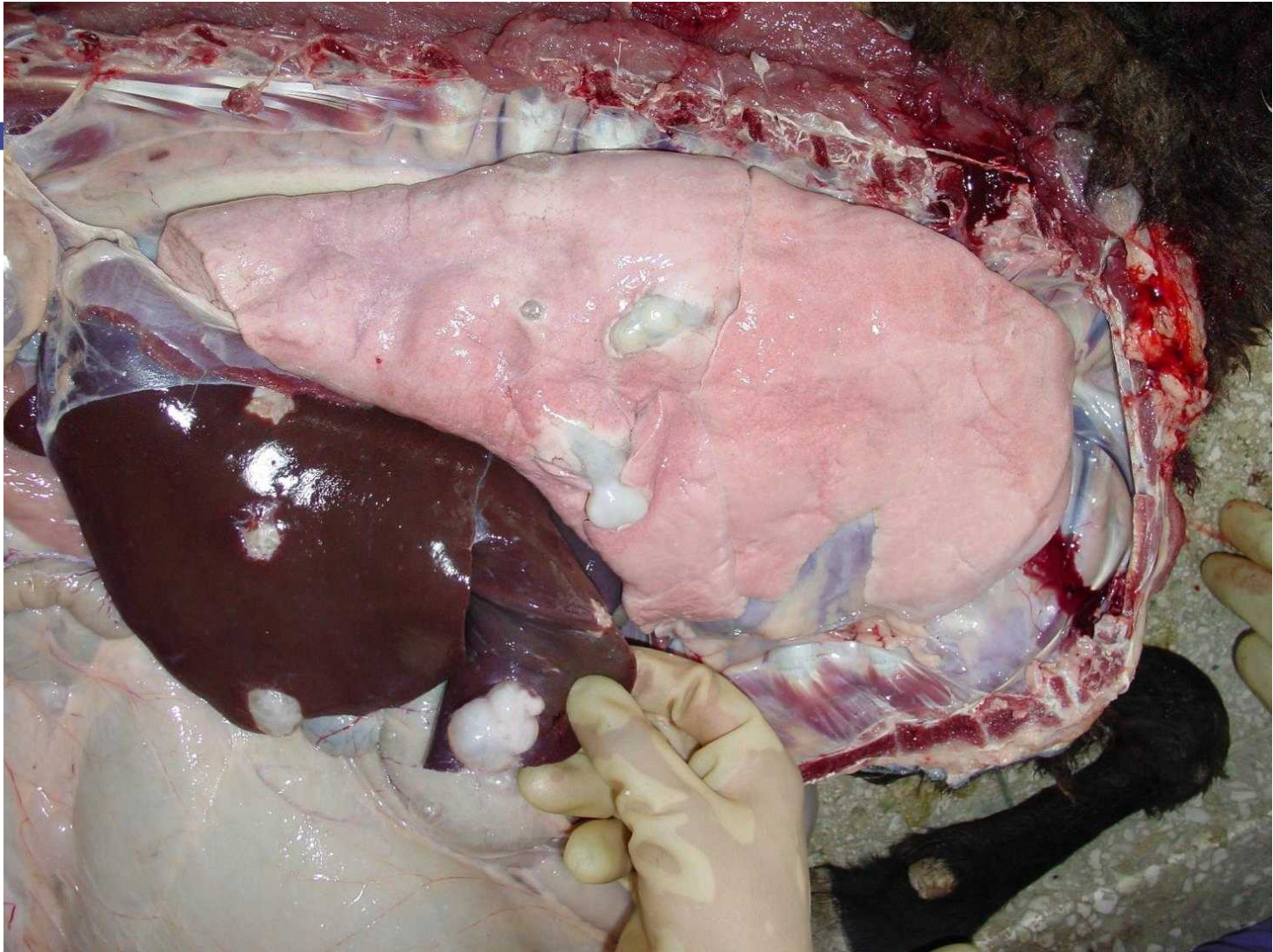




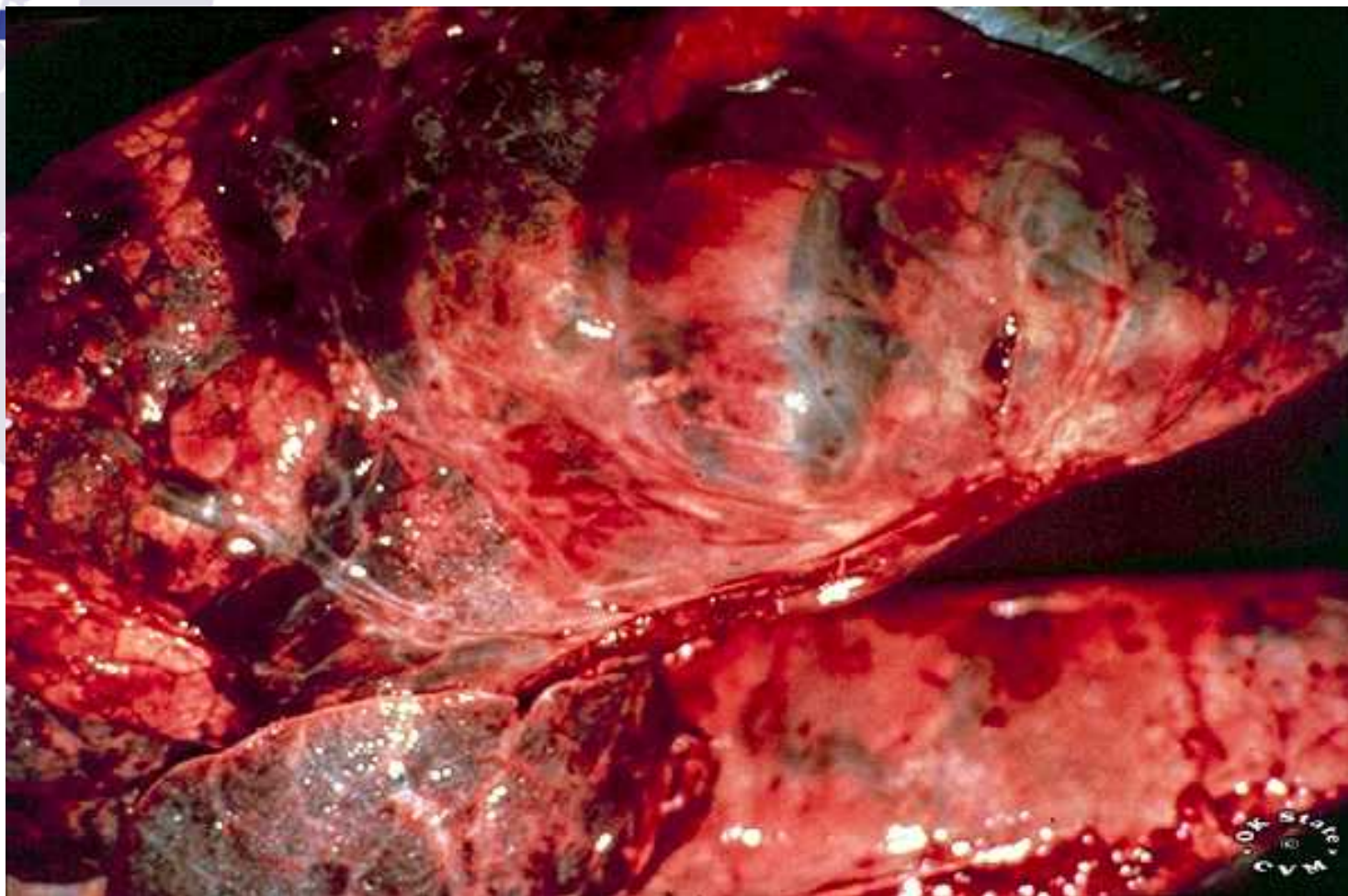






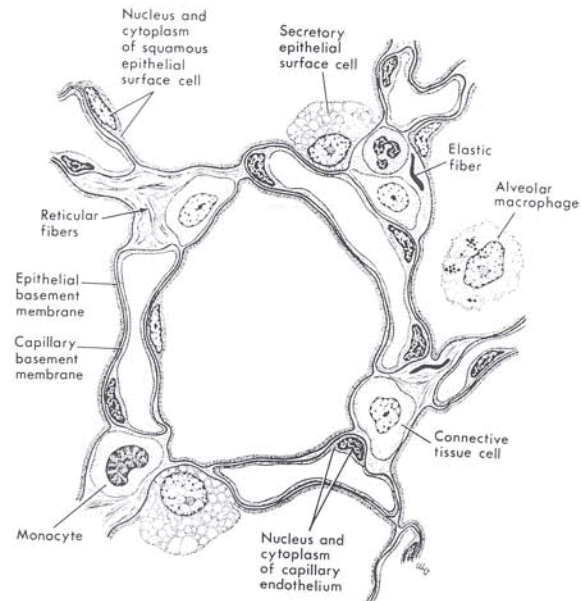








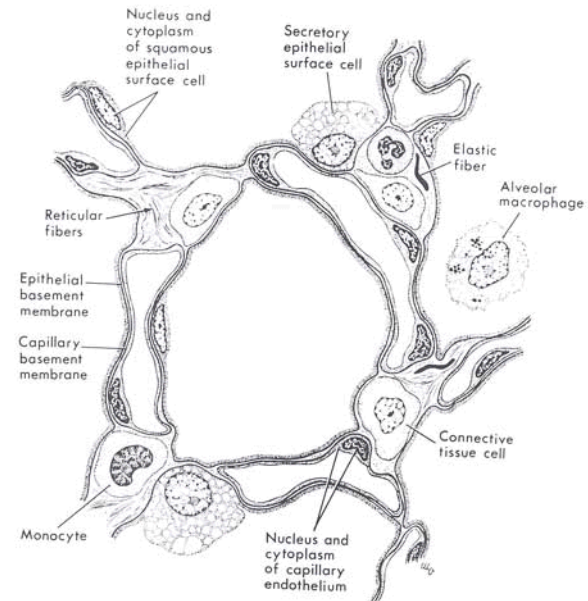
Pulmonary edema





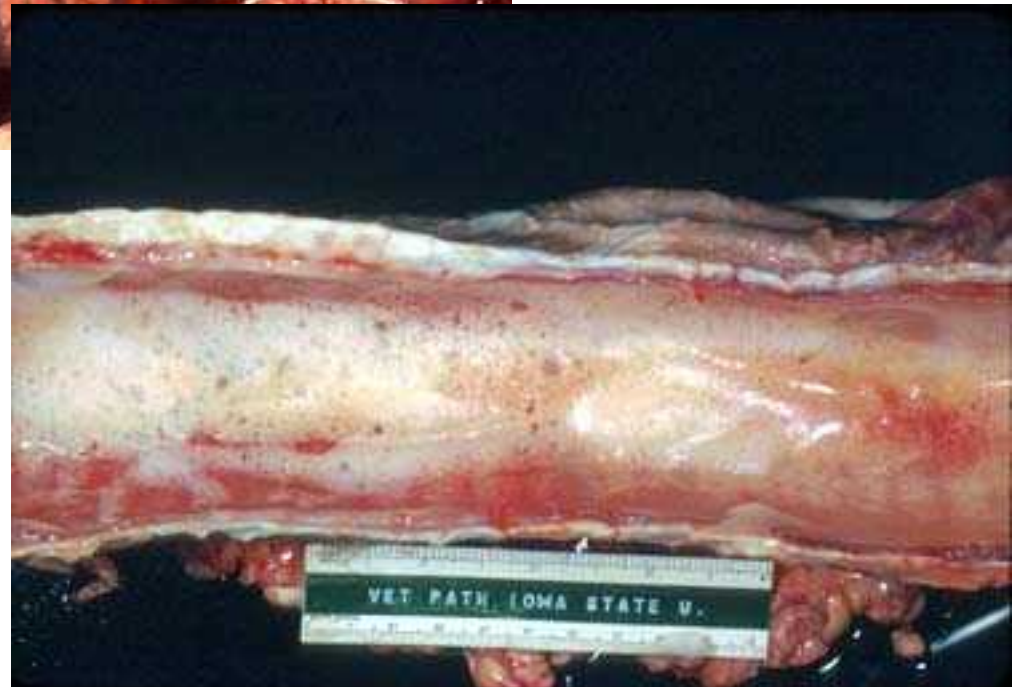
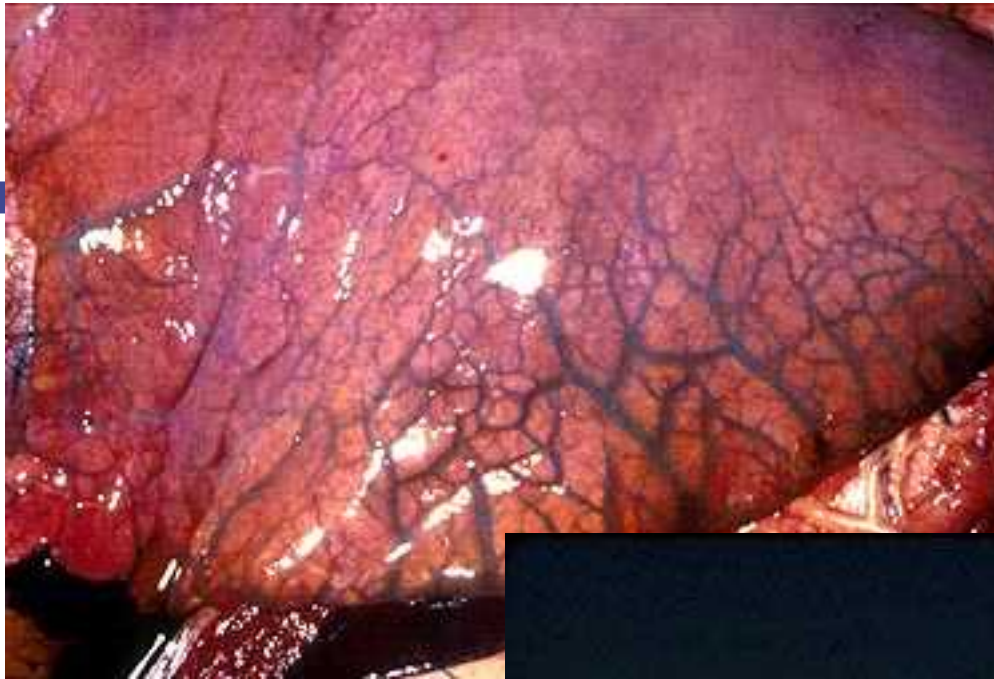
Causes of pulmonary edema

- Increased hydrostatic pressure
- Damage to endothelial cells
- Damage to alveolar cells
- Other unusual causes







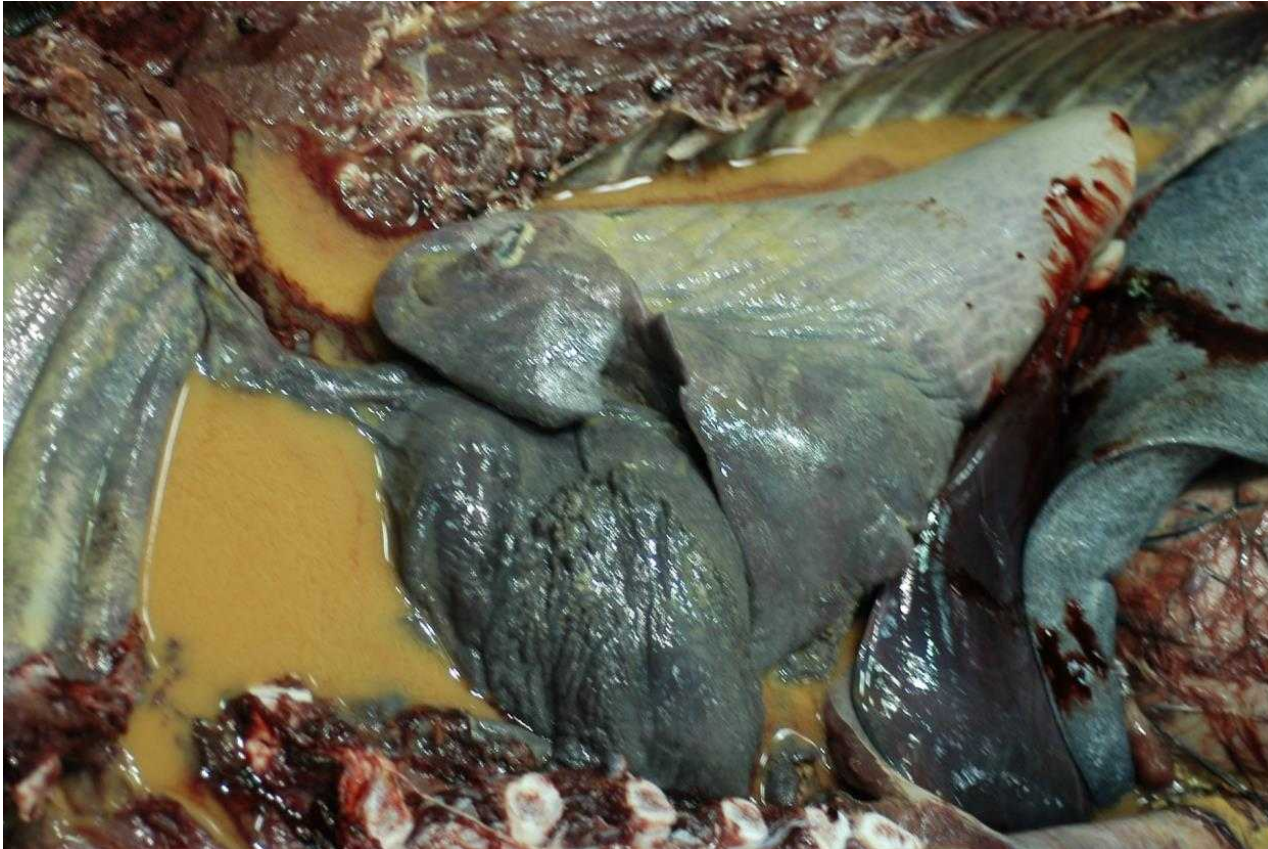


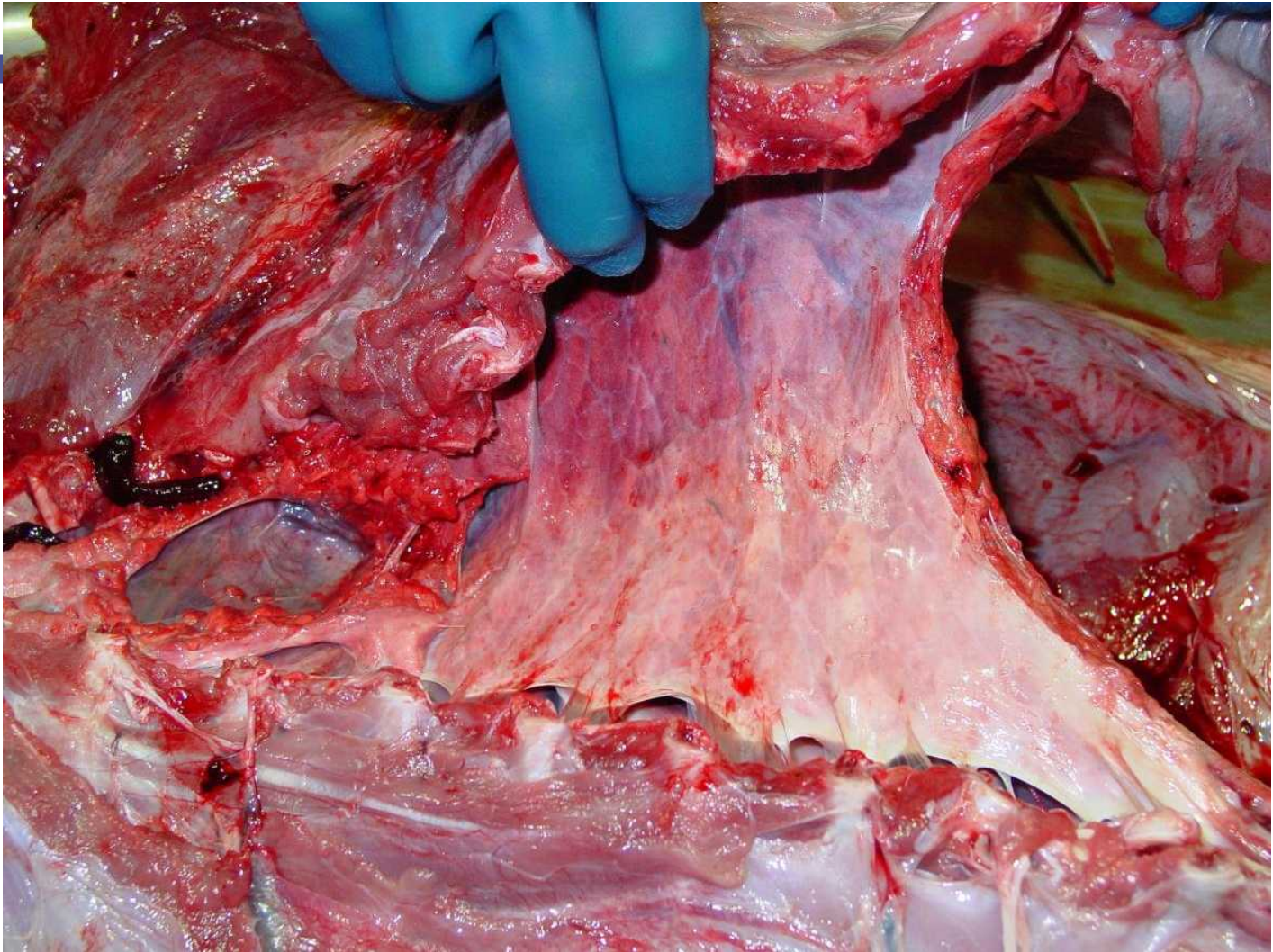




PNEUMONIA

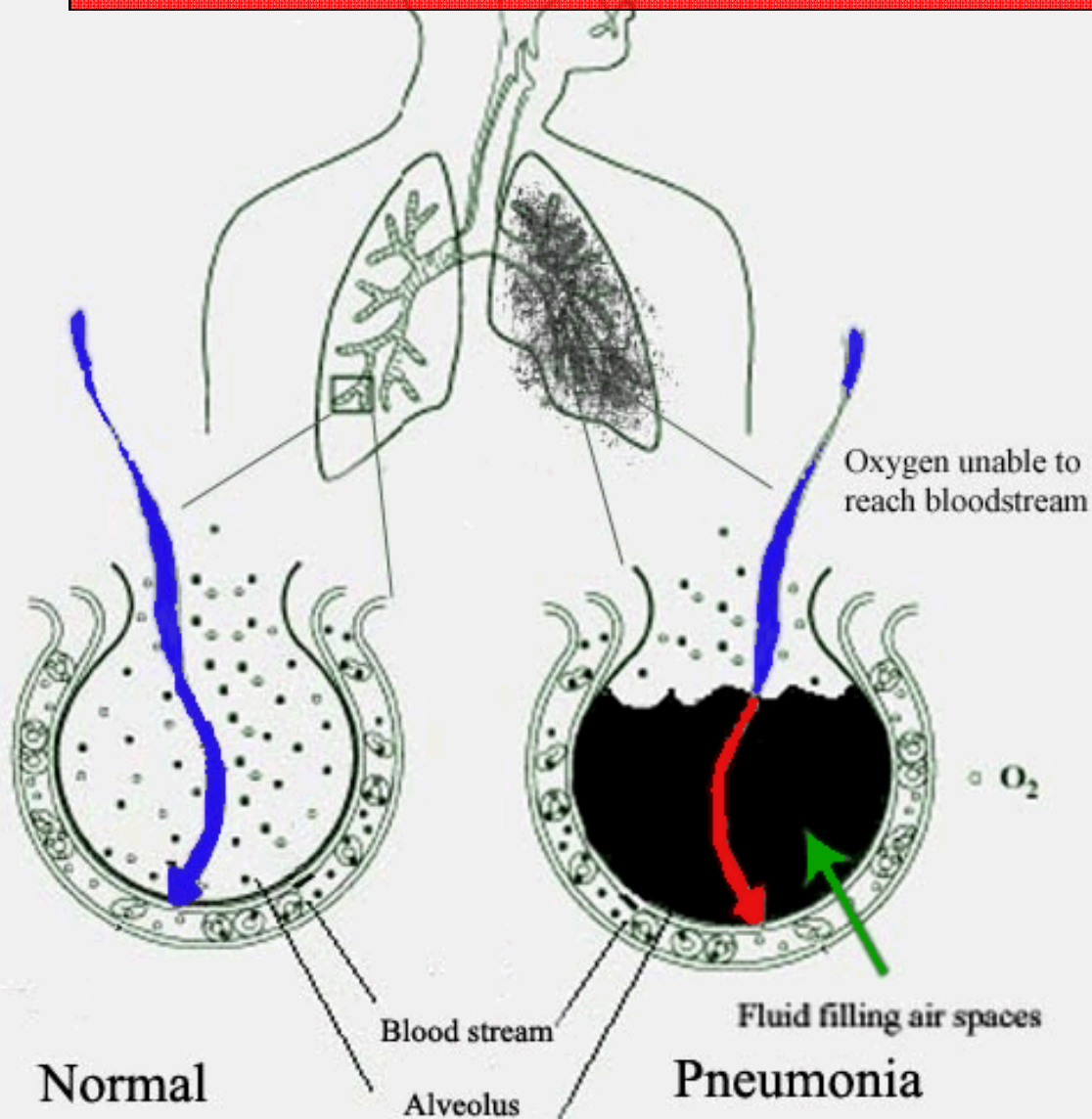
- **What is it?**
- **Categories?**
- **Pneumonias with a specific etiology**
 - Viral
 - Bacterial
 - Parasitic







Pneumonia means that the
ALVEOLI are affected.





Clinical signs associated with disorders in each?



bronchioles

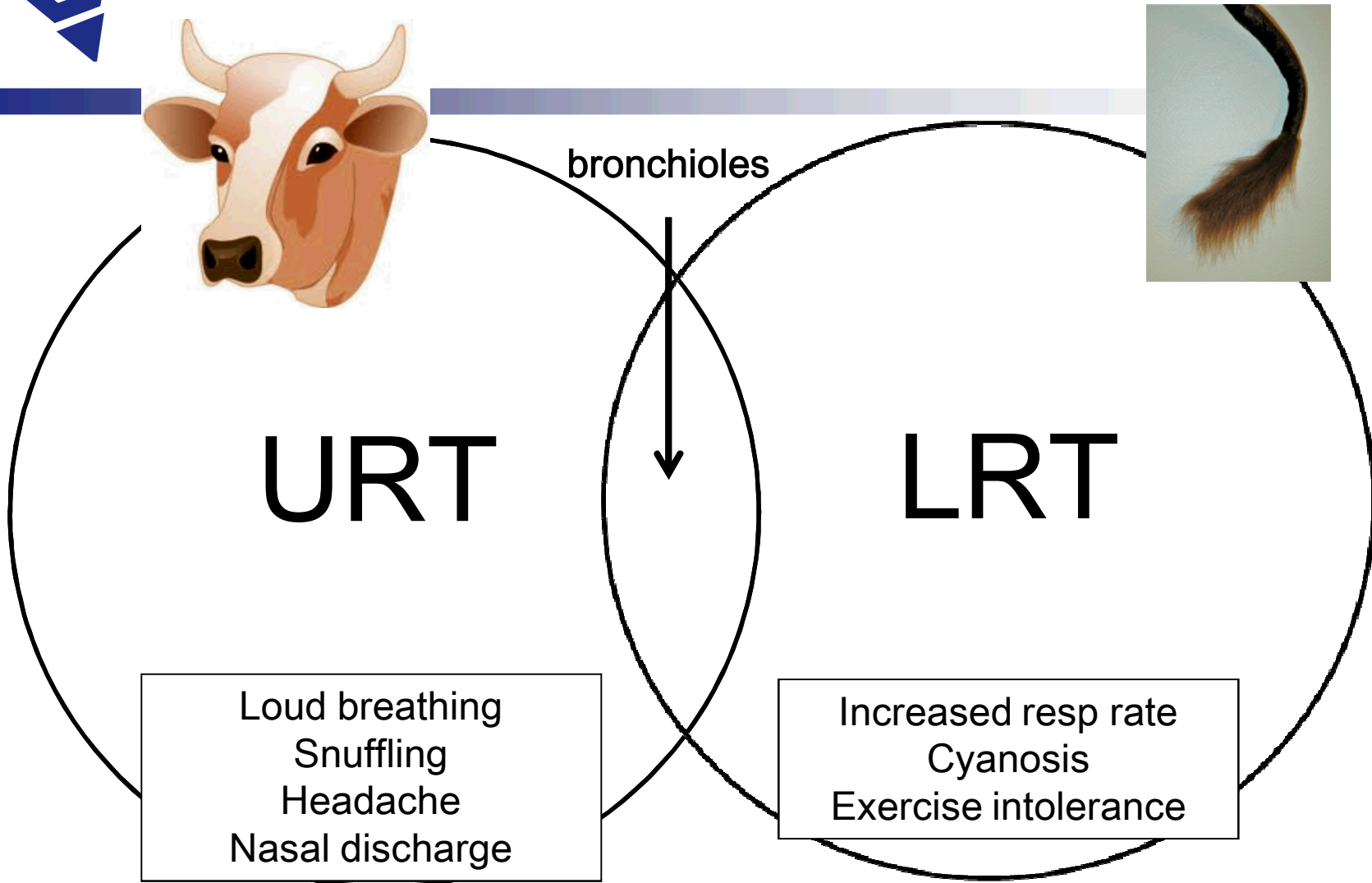


URT

LRT



Clinical signs associated with disorders in each?



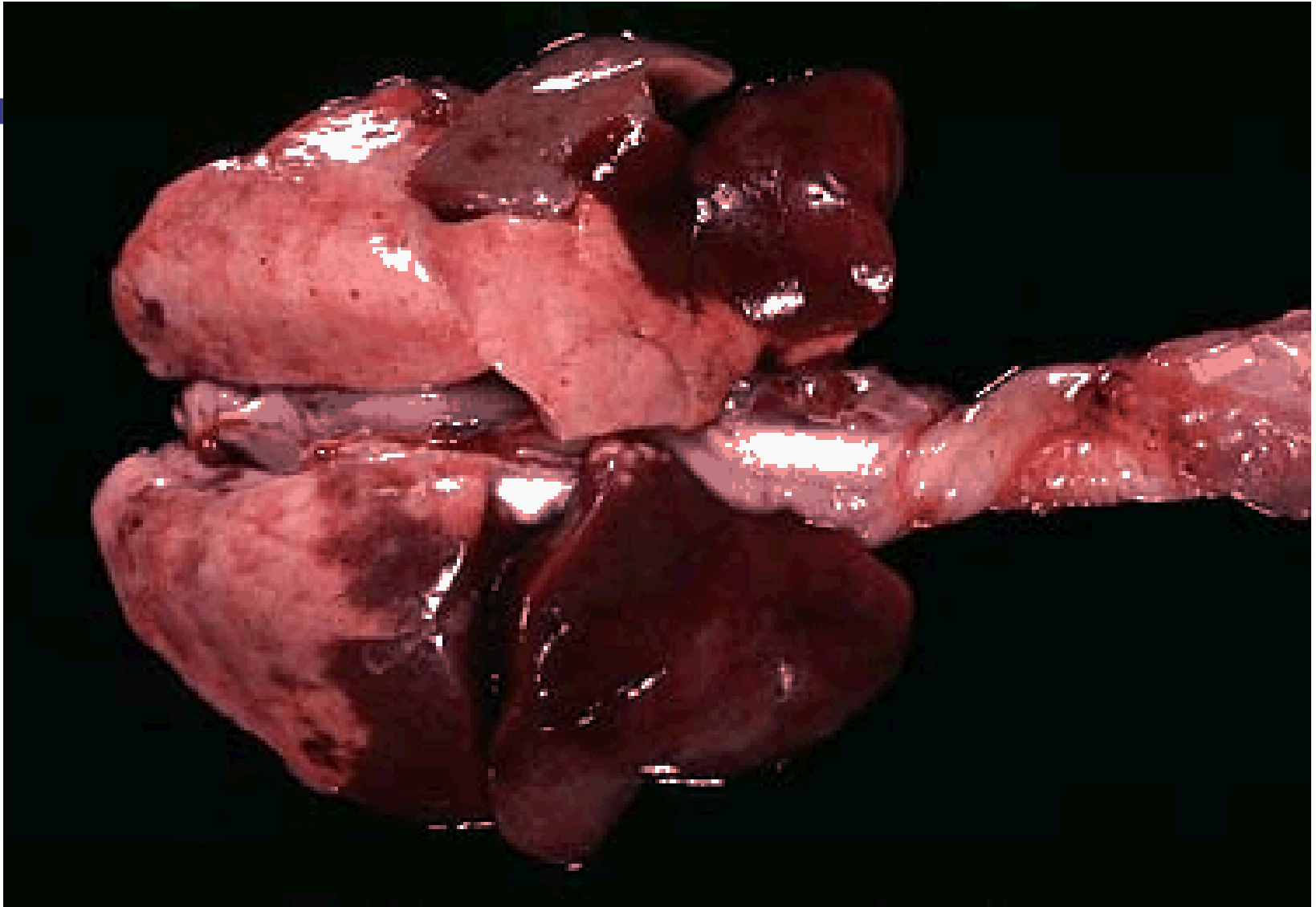


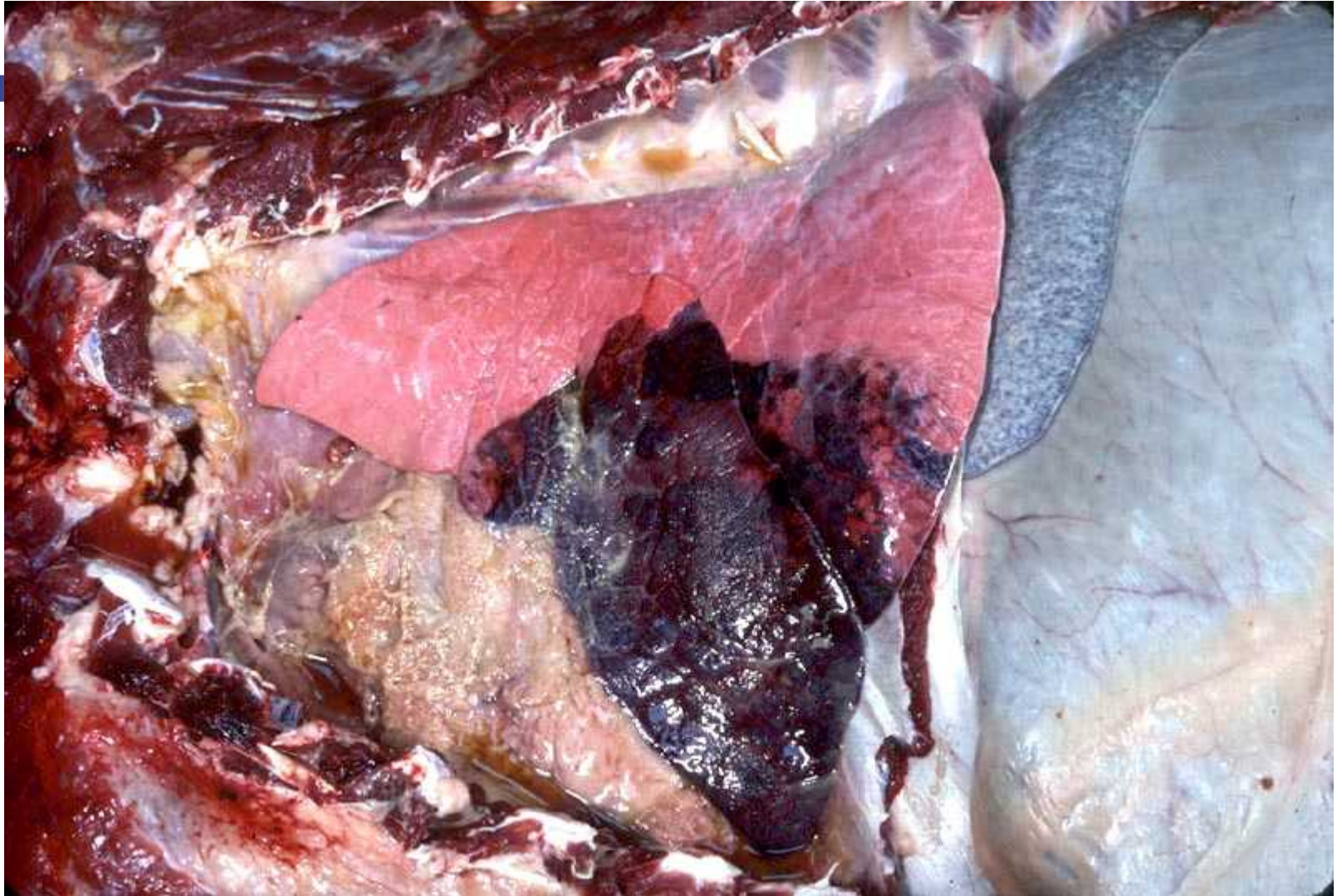
Types of Pneumonia

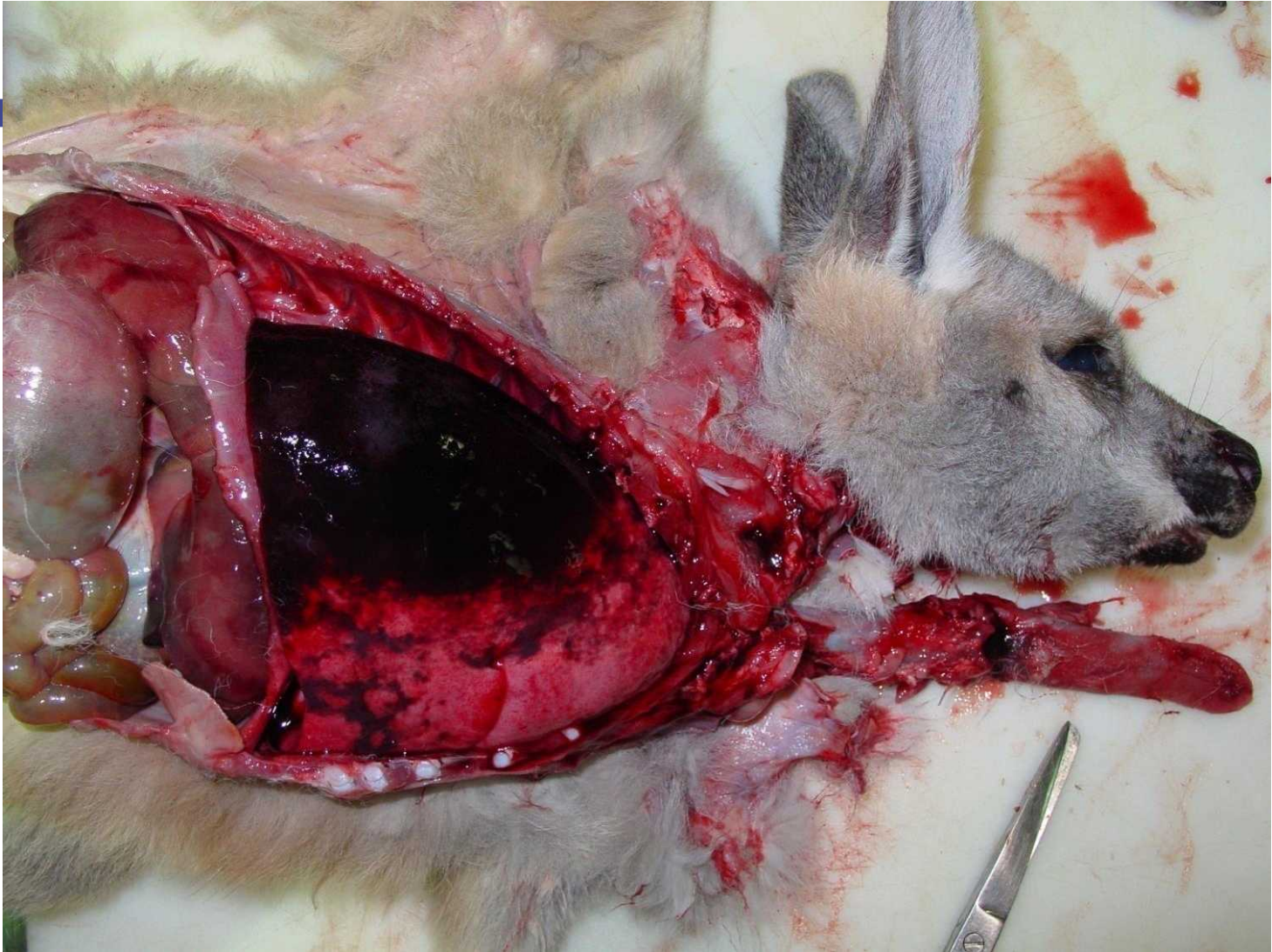
CATEGORIES

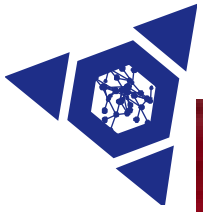
- **Bronchopneumonia**
- **Interstitial pneumonia**
- **Bronchointerstitial**
- **Special categories**



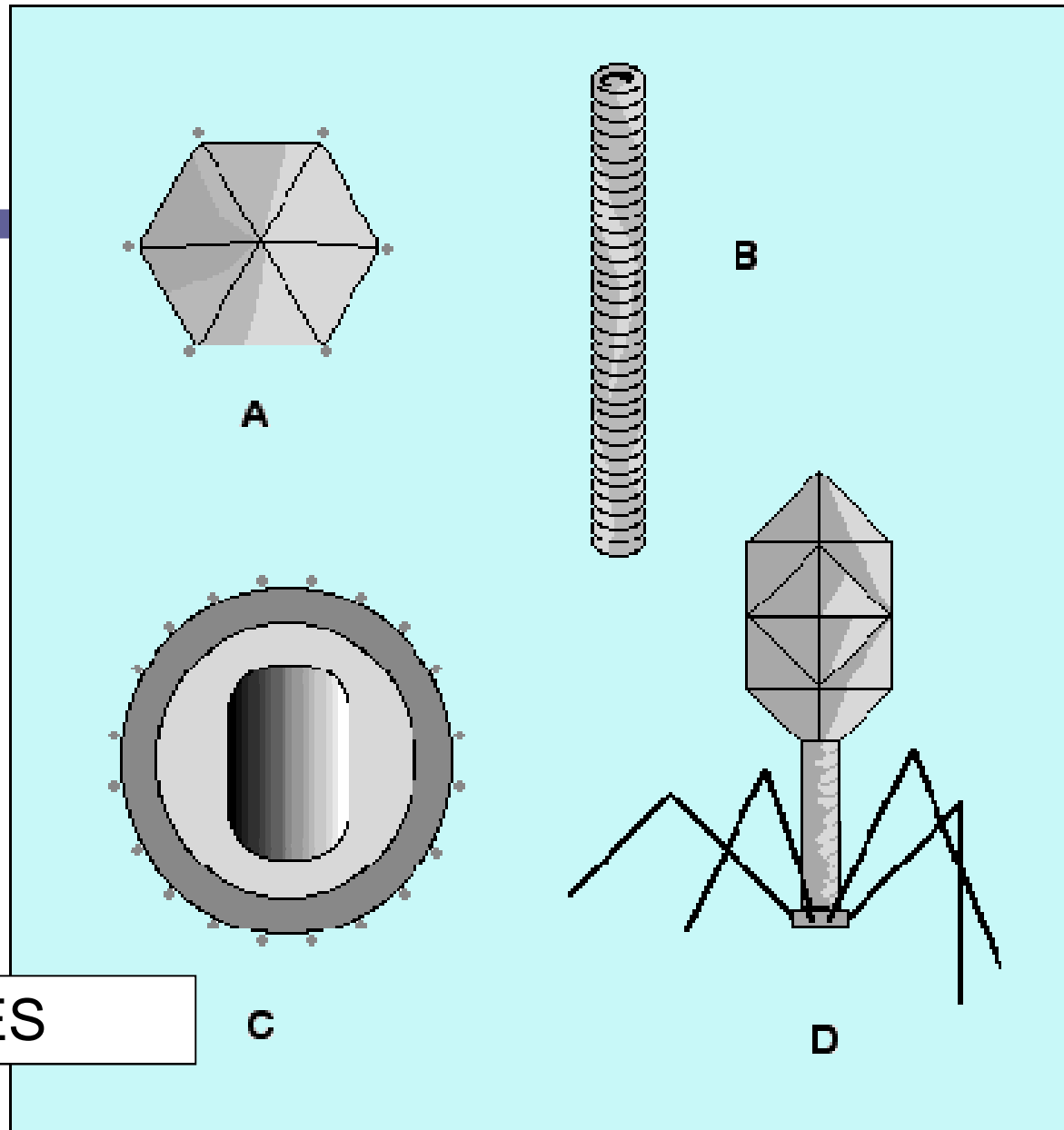




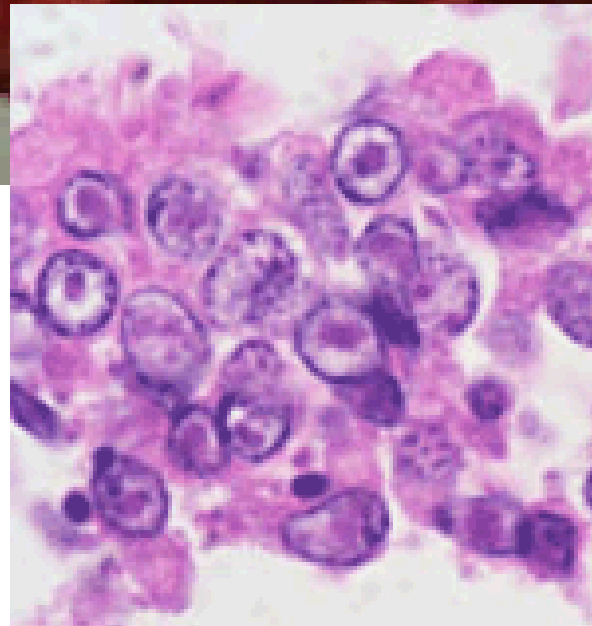
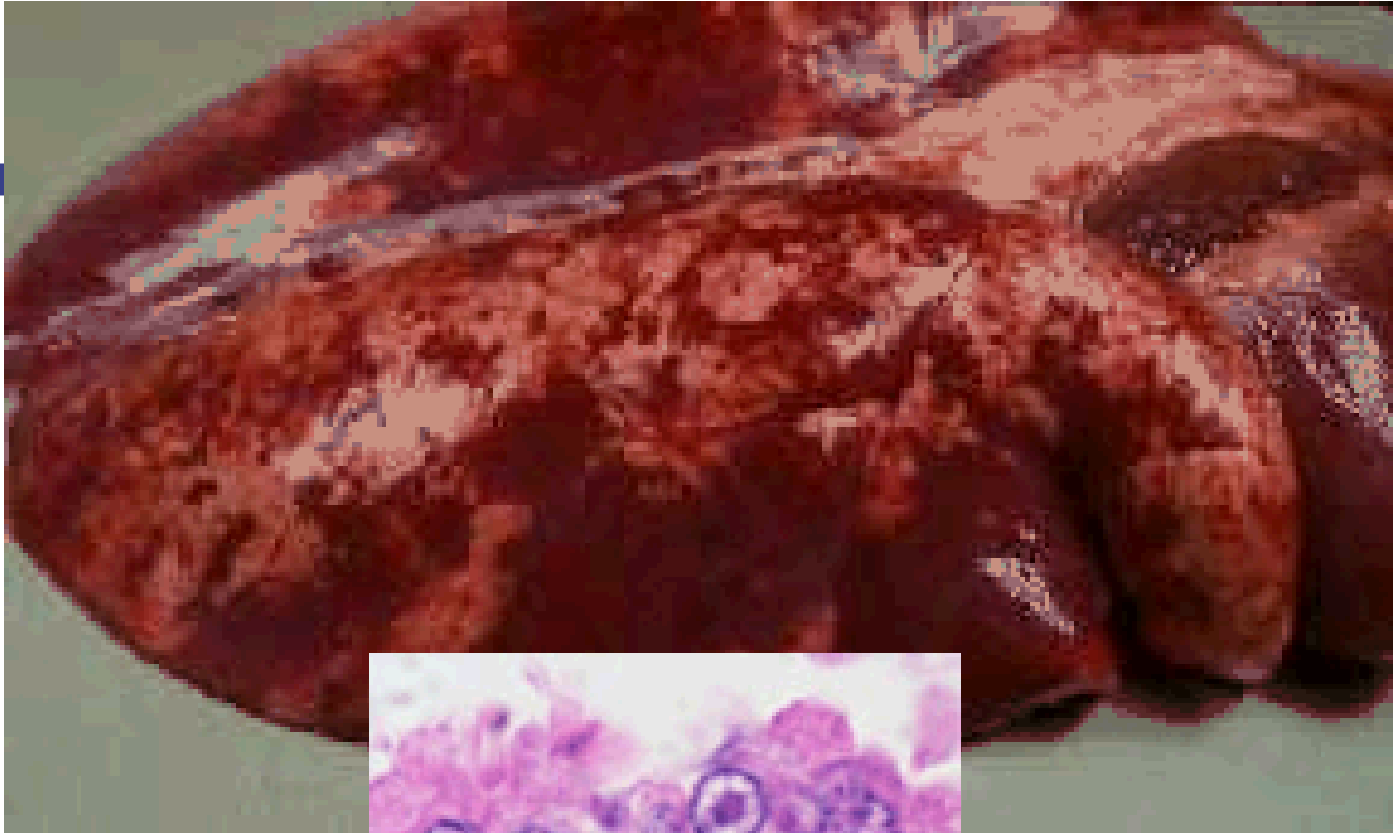




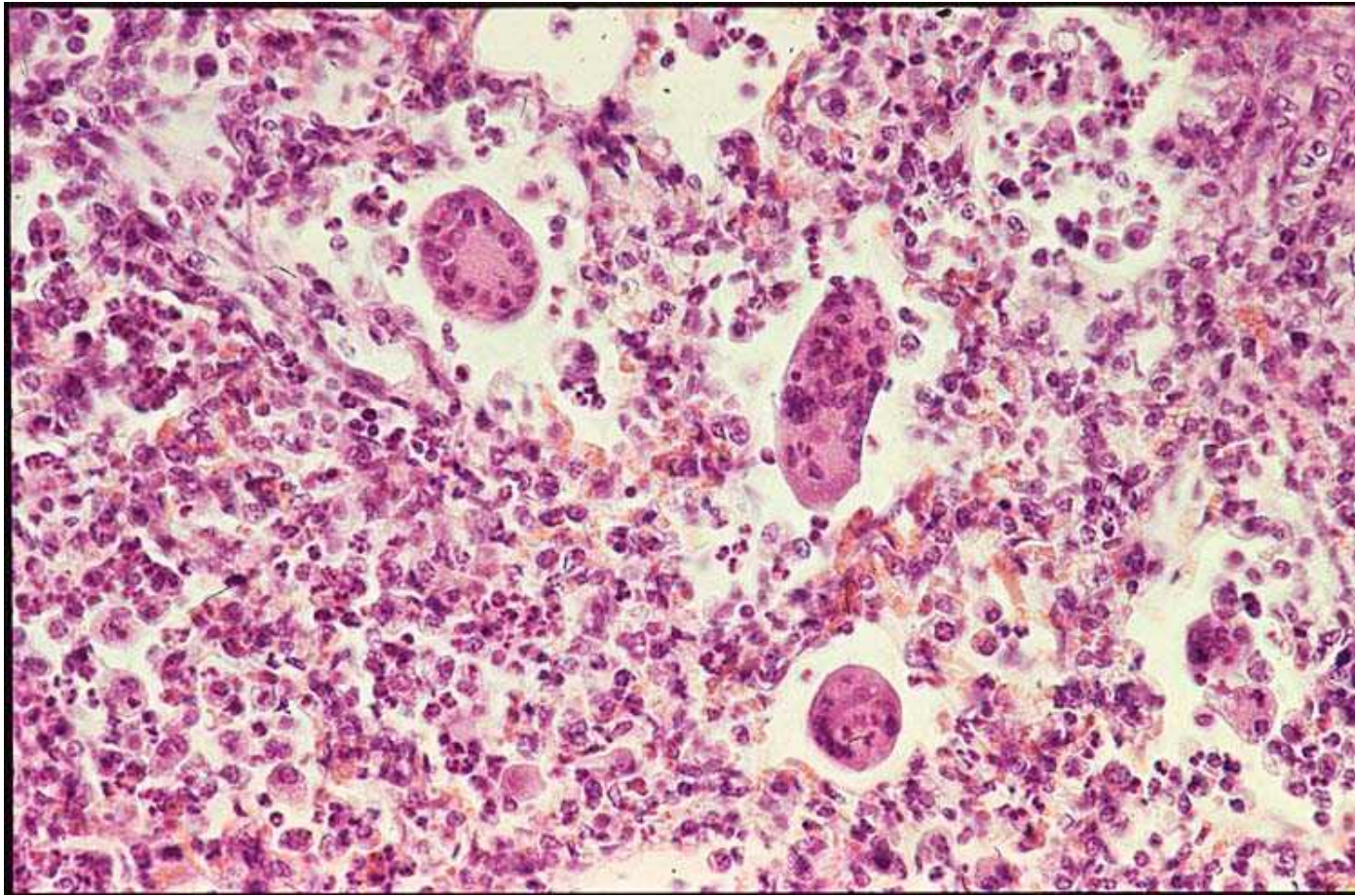


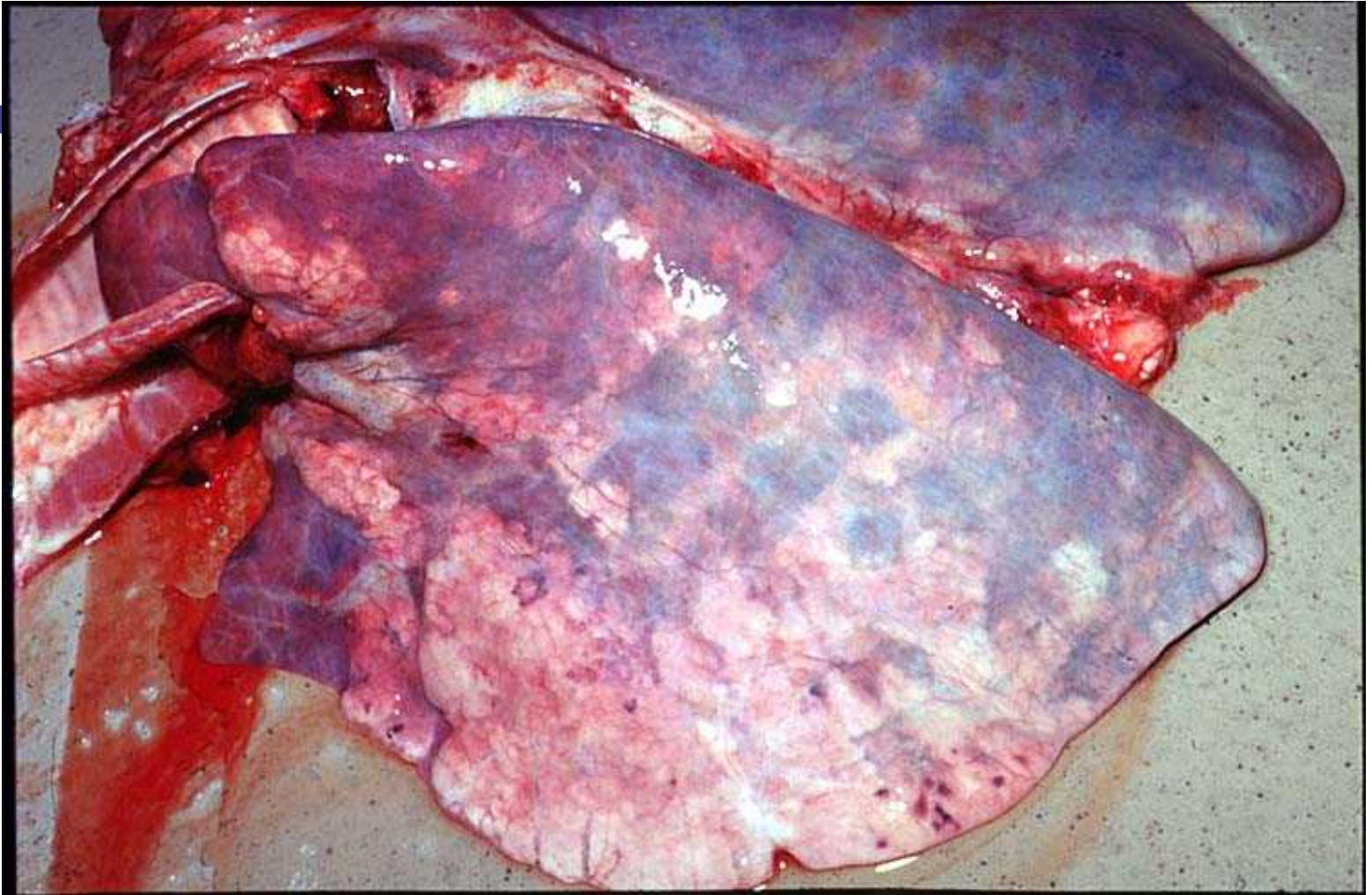


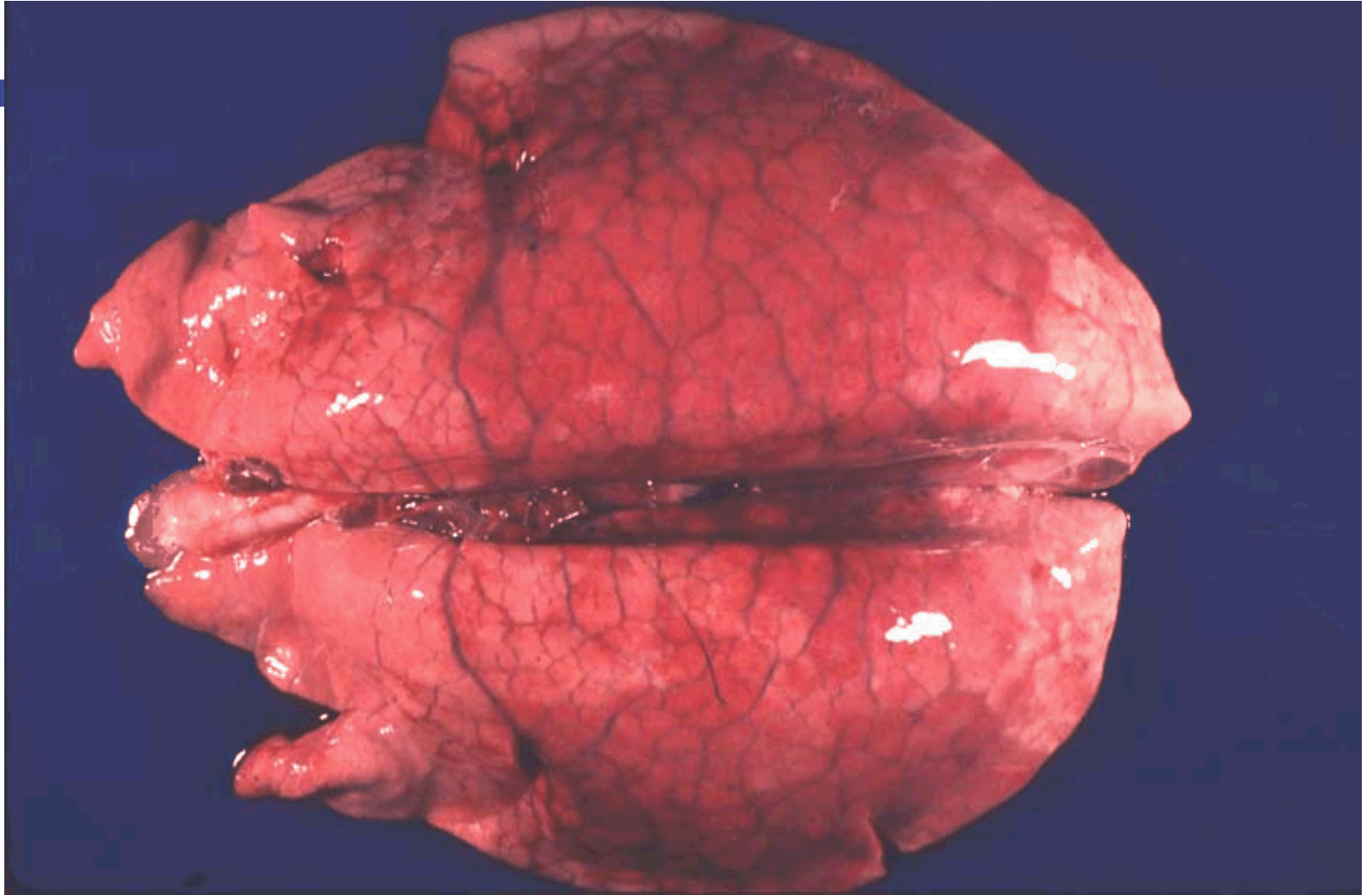
VIRUSES

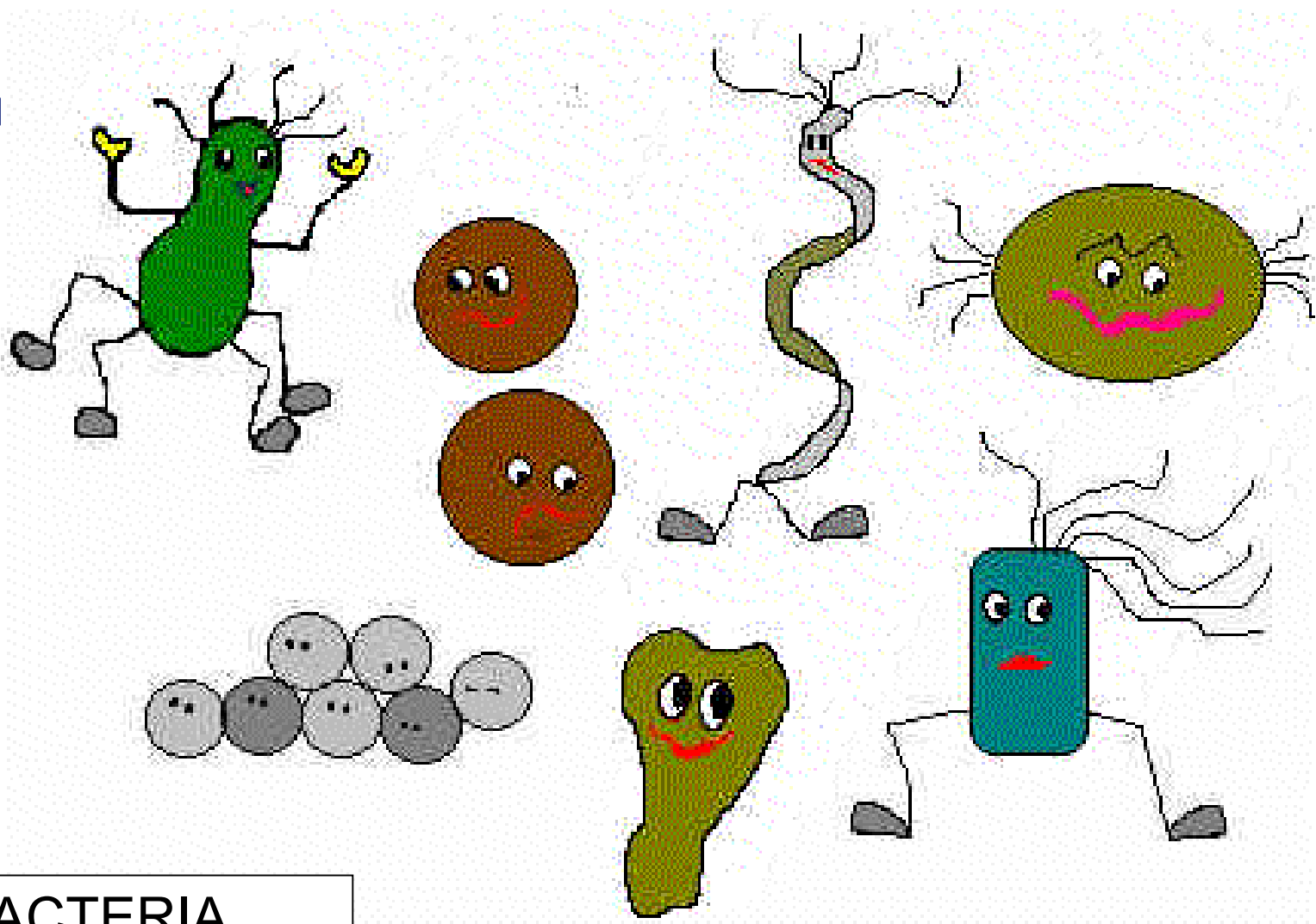




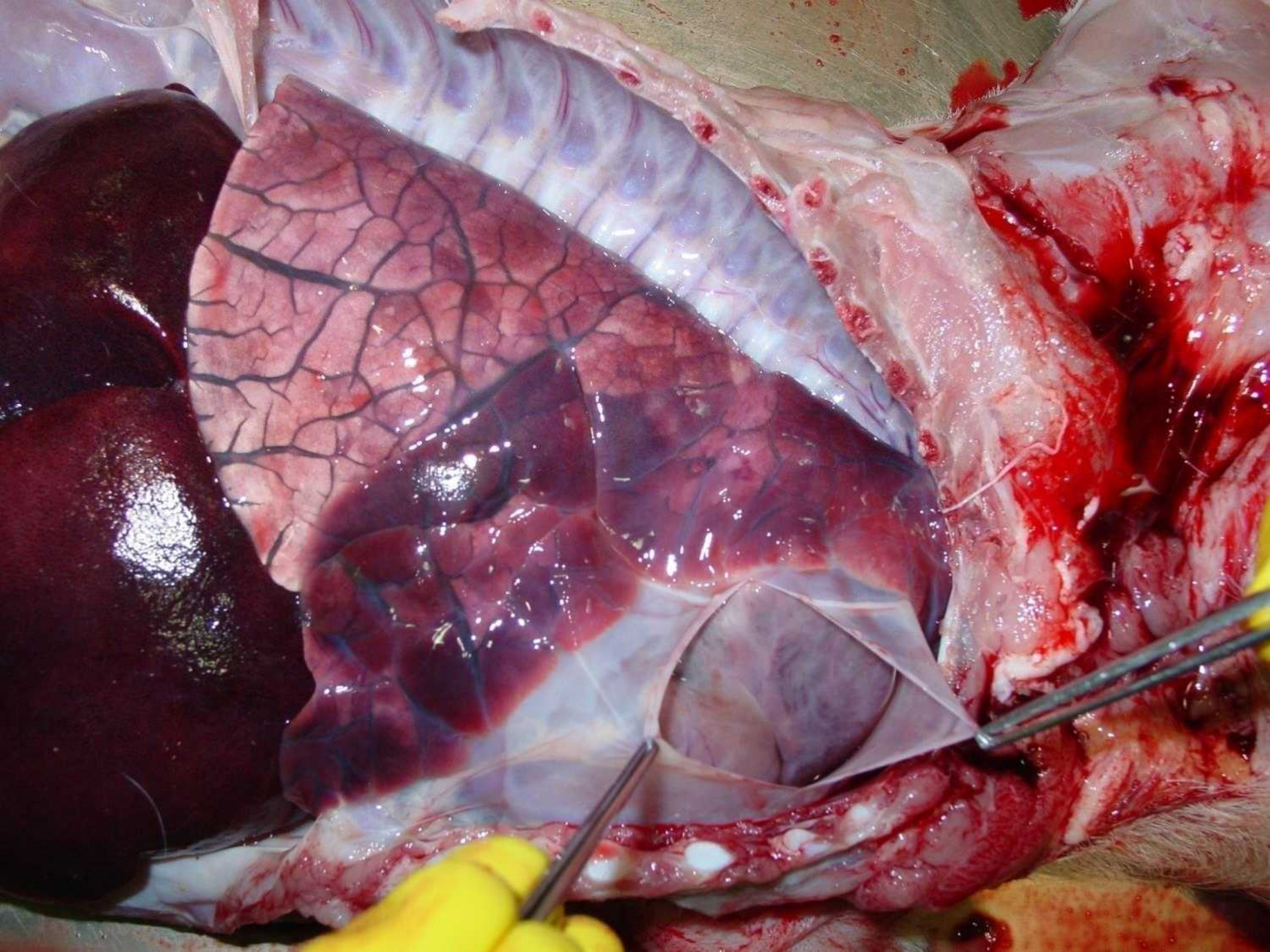




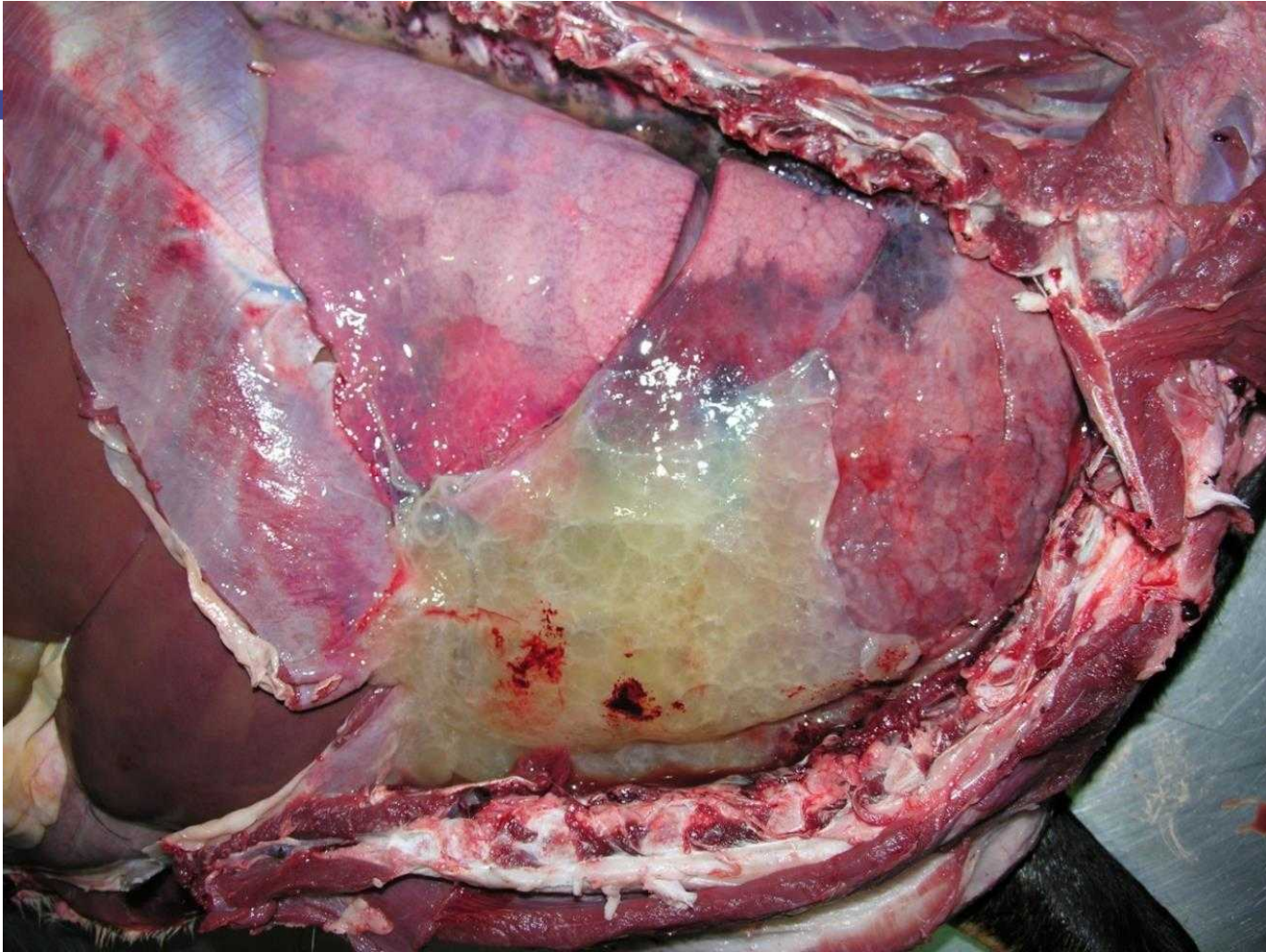


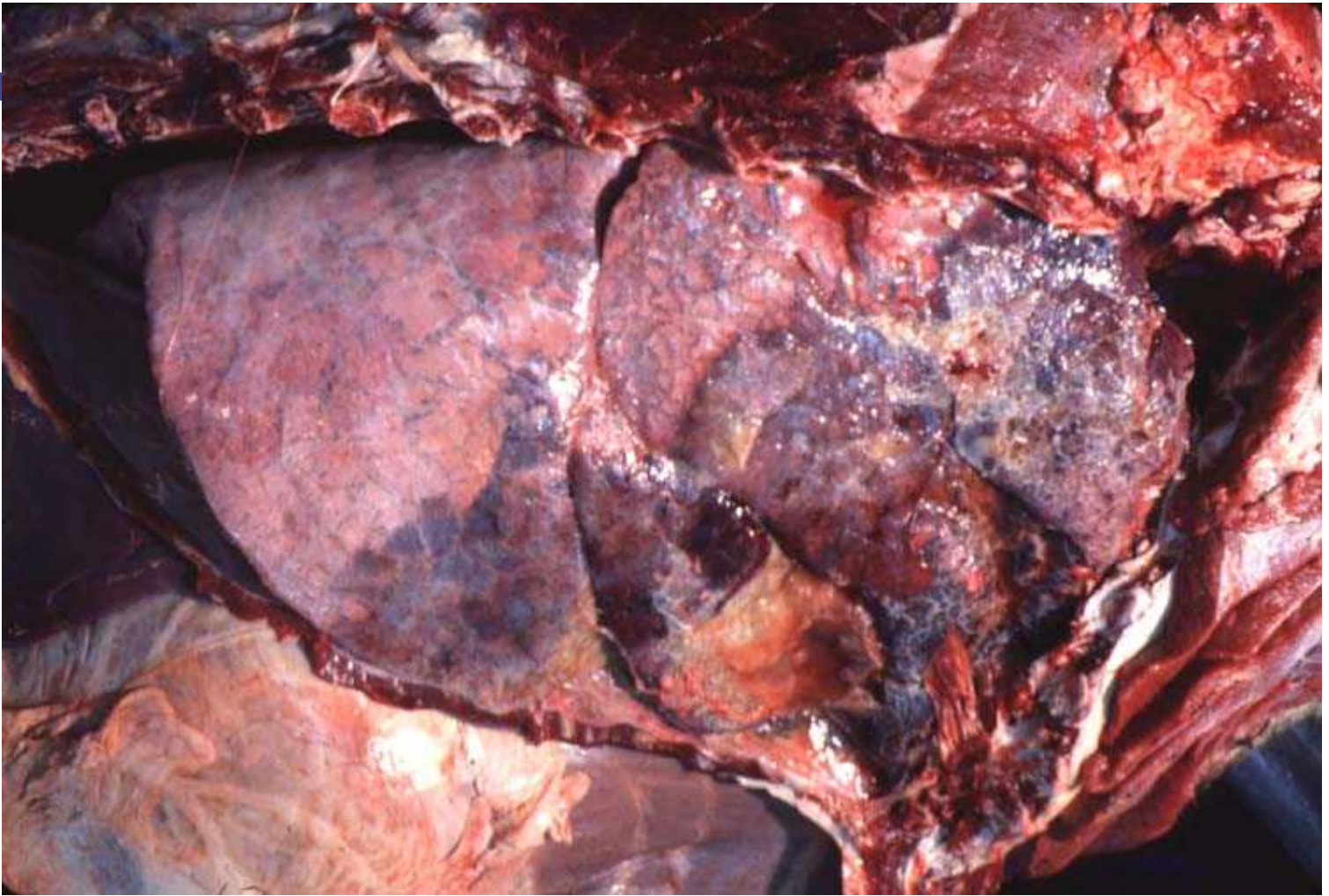


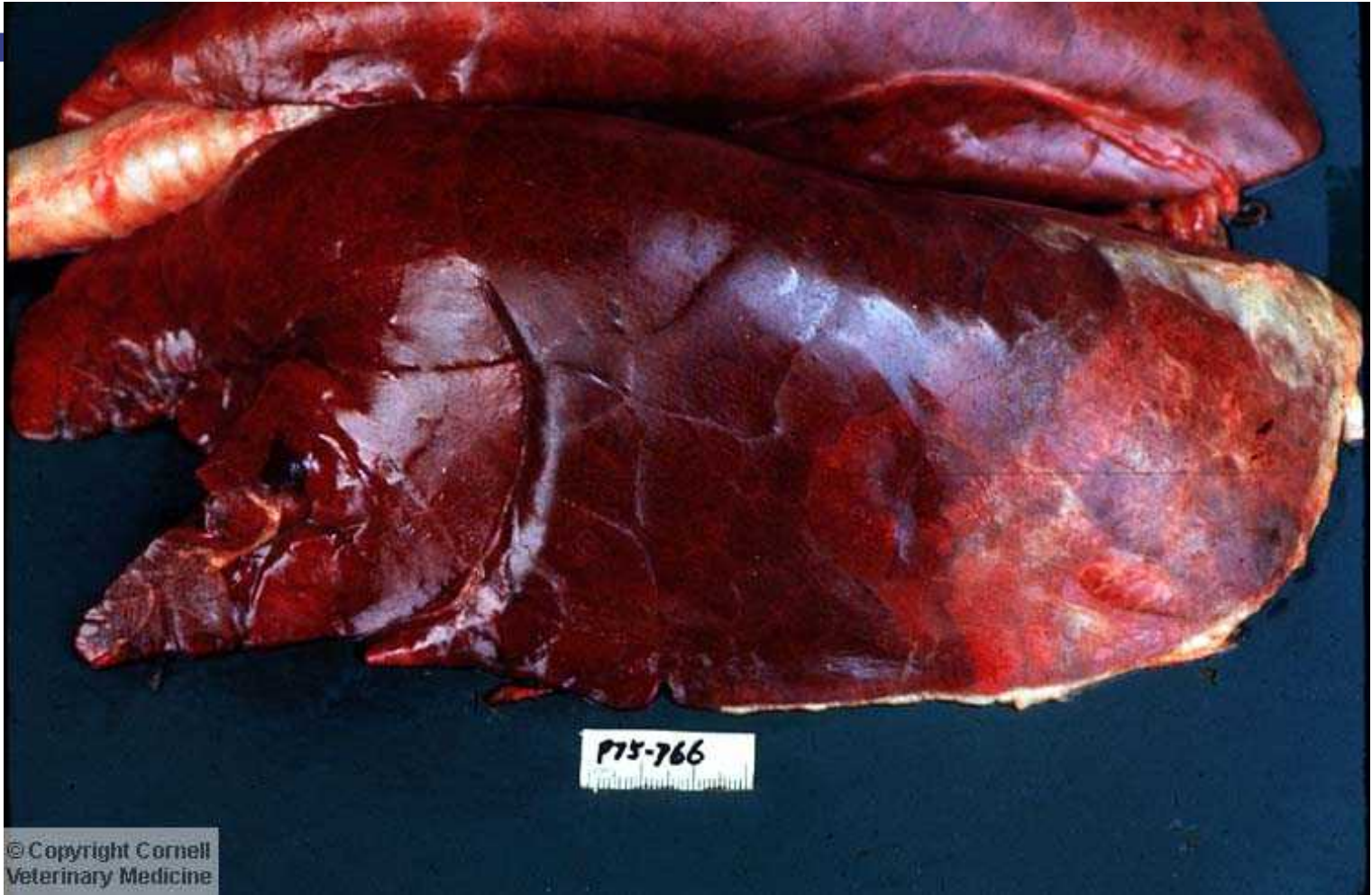
BACTERIA

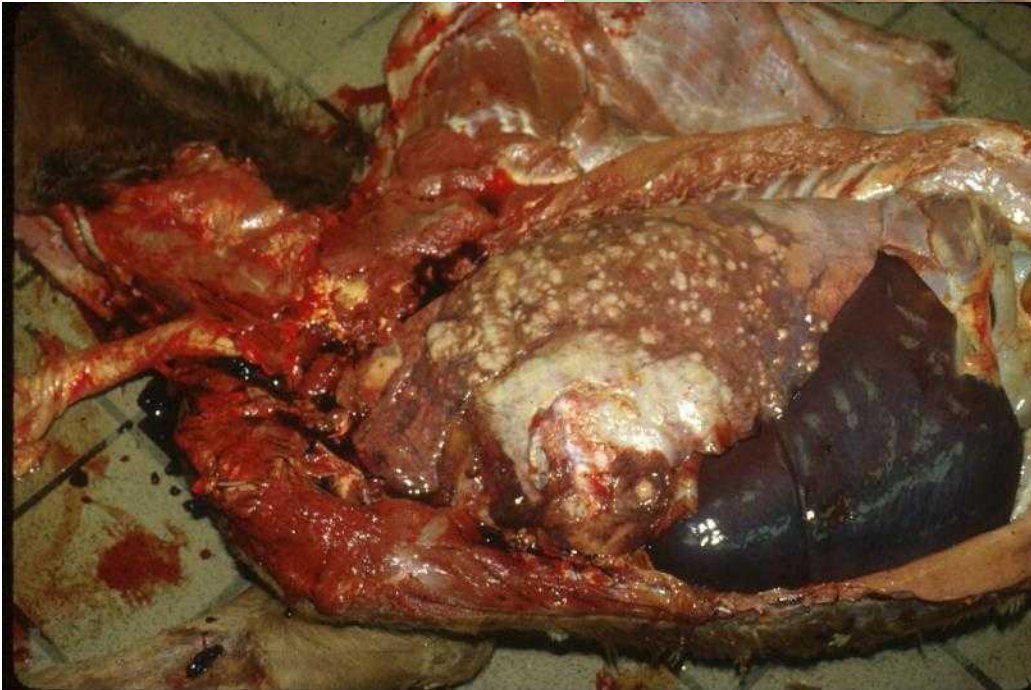
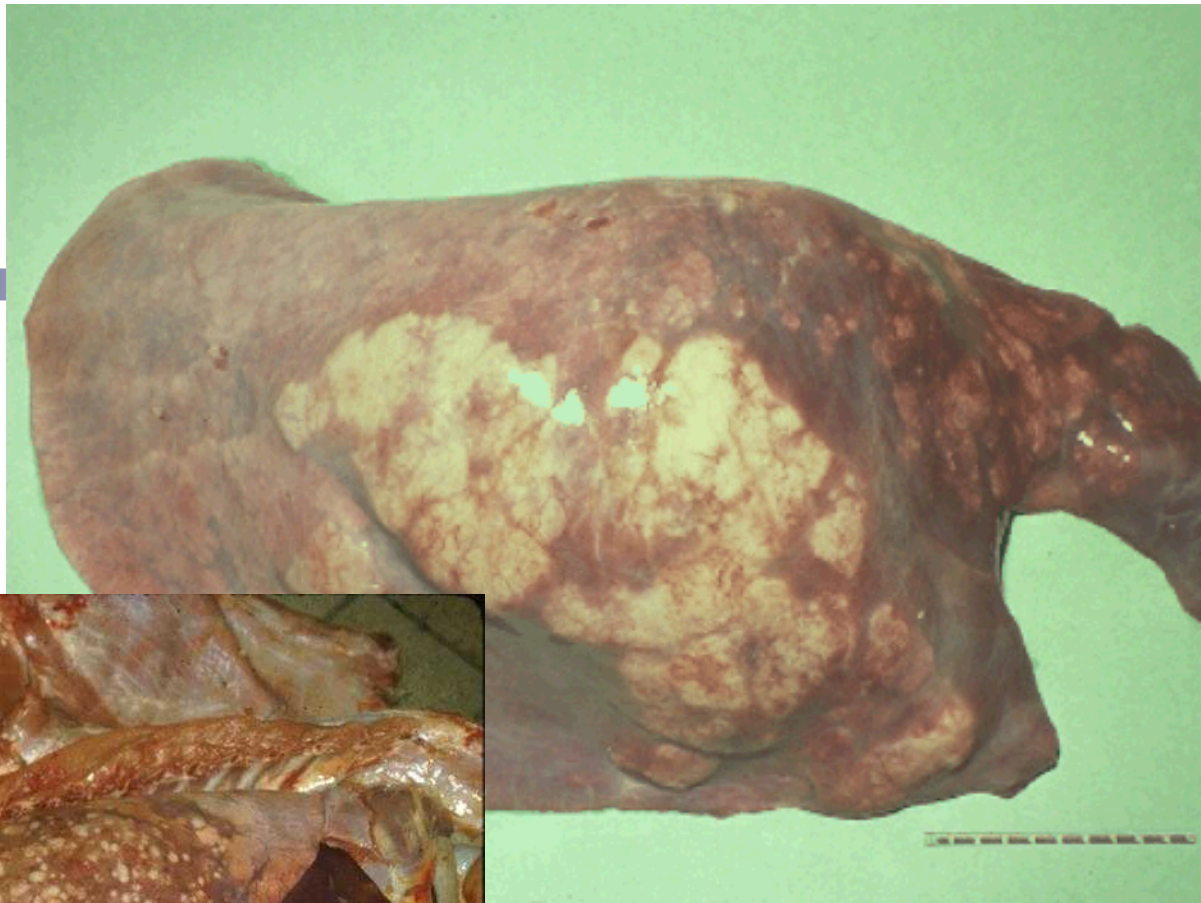




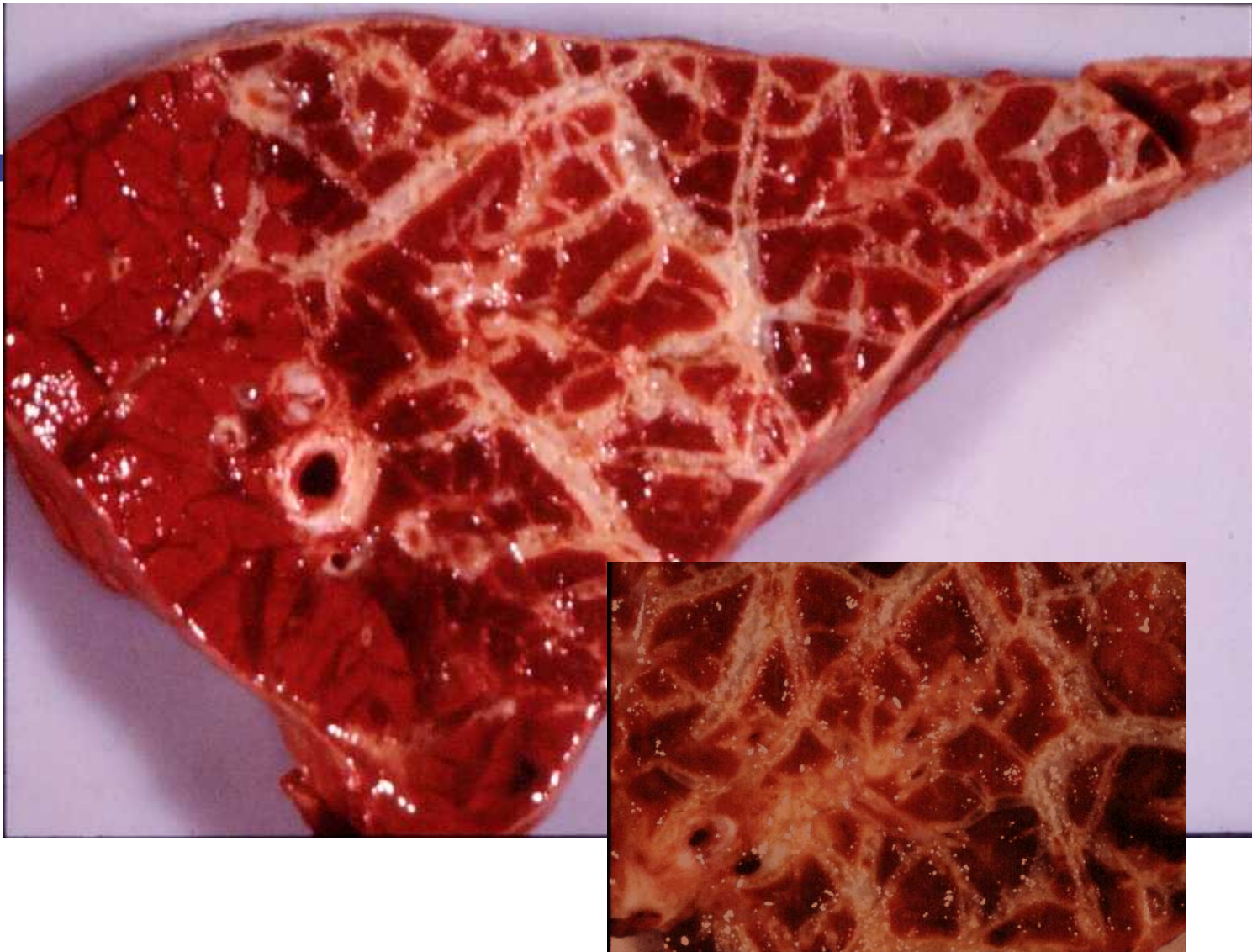


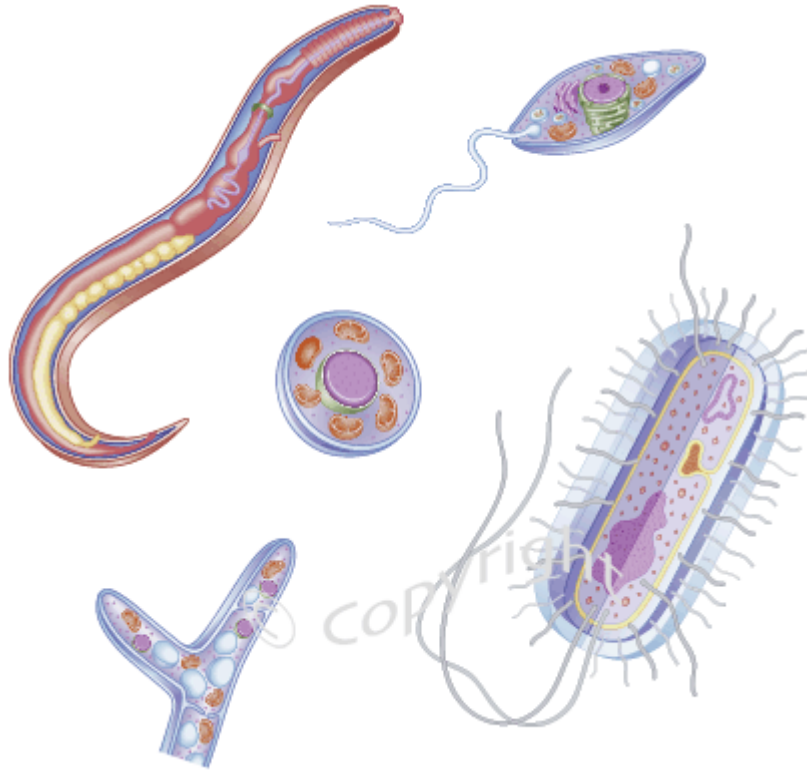












Lung parasites

