



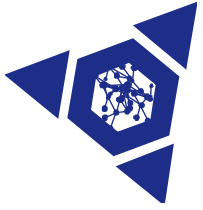
SAND2013-1890P

ISCHEMIA, INFARCTION, EMBOLISM



Sandia National Laboratories is a multi-program laboratory managed and operated by Sandia Corporation, a wholly owned subsidiary of Lockheed Martin Corporation, for the U.S. Department of Energy's National Nuclear Security Administration under contract DE-AC04-94AL85000.SAND 201



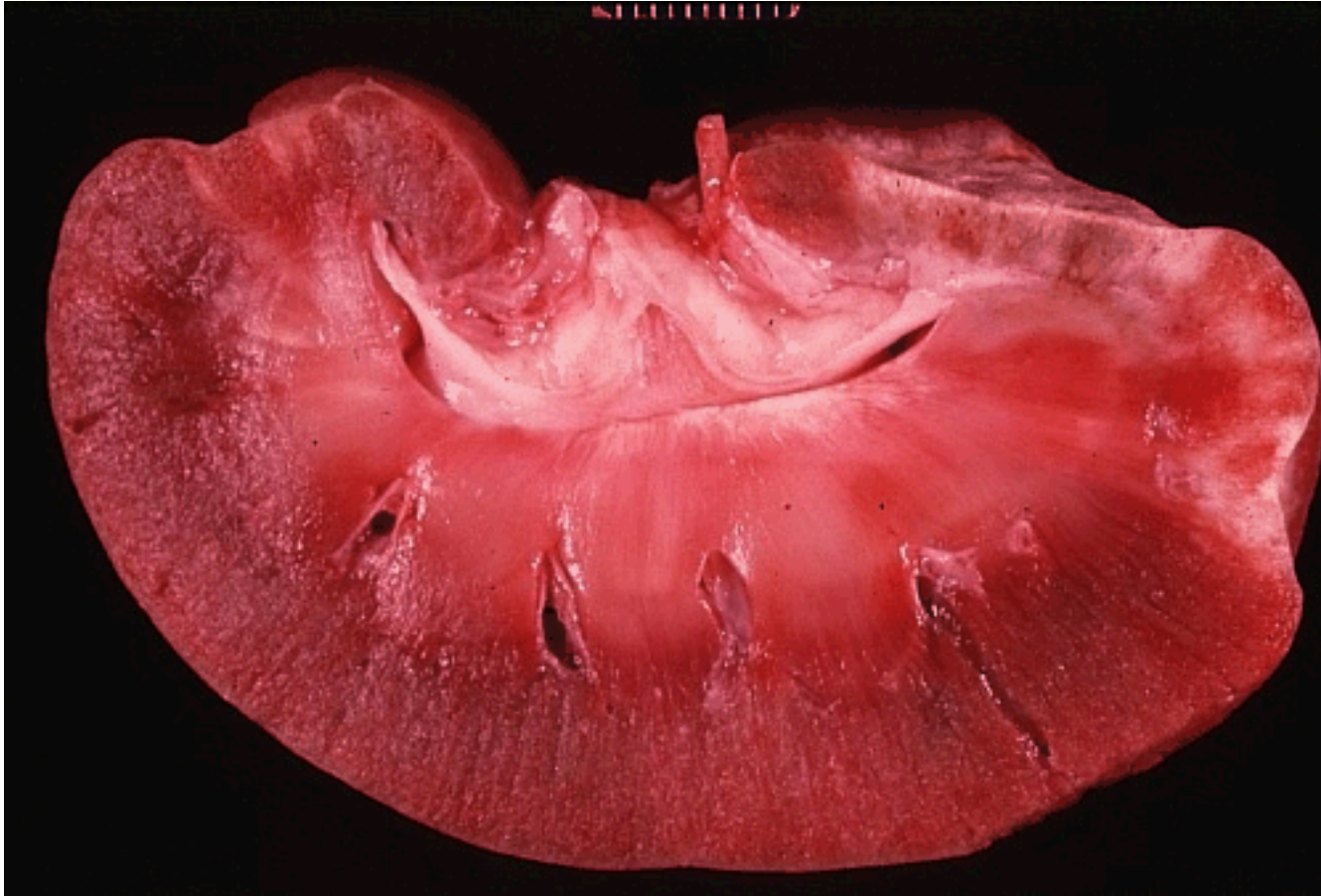


Ischemia

- **Local loss or decrease of blood supply to a tissue or organ**
- **Results in decreased tissue oxygenation**
 - hypoxia
 - infarction



Infarct





Infarct



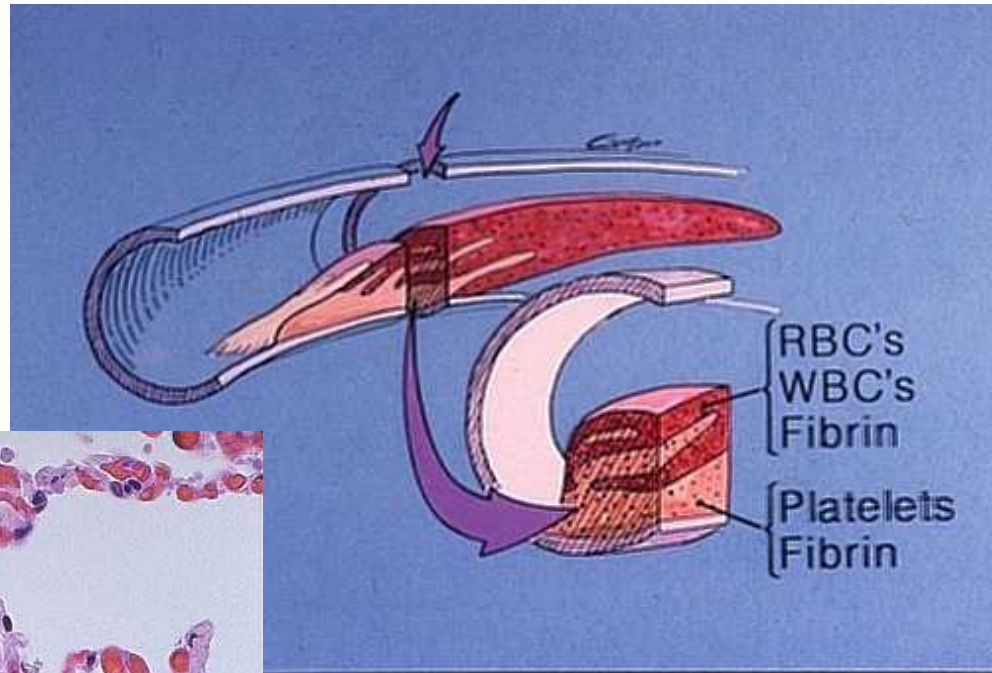
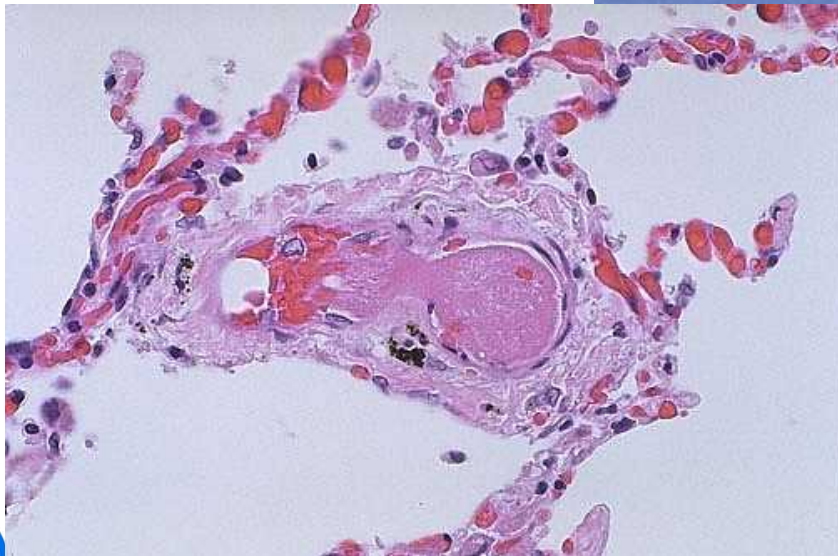


Thrombosis

- **A solid mass of blood elements formed within a blood vessel or cardiac chamber.**
- **In a living organism**
- **Blood can clot in vessels postmortem, but it is just referred to as a clot**



Thrombosis



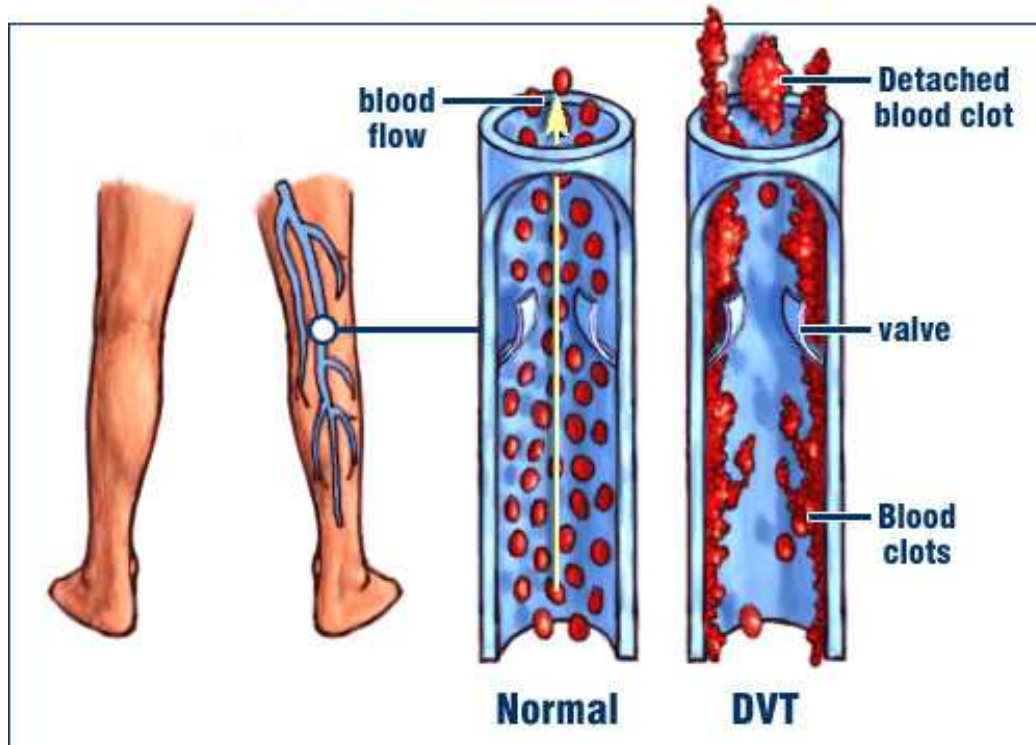


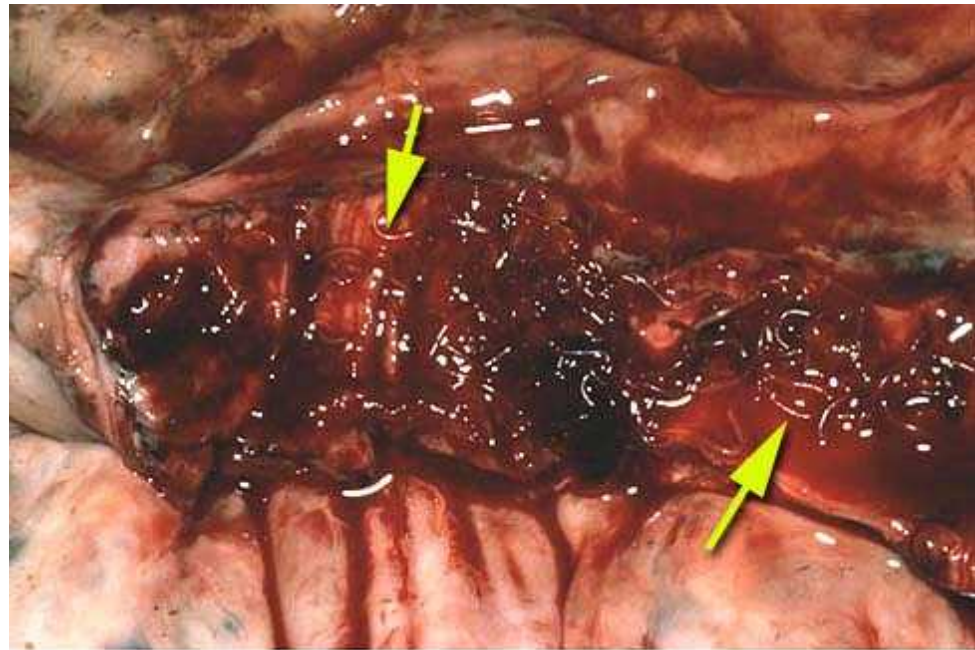
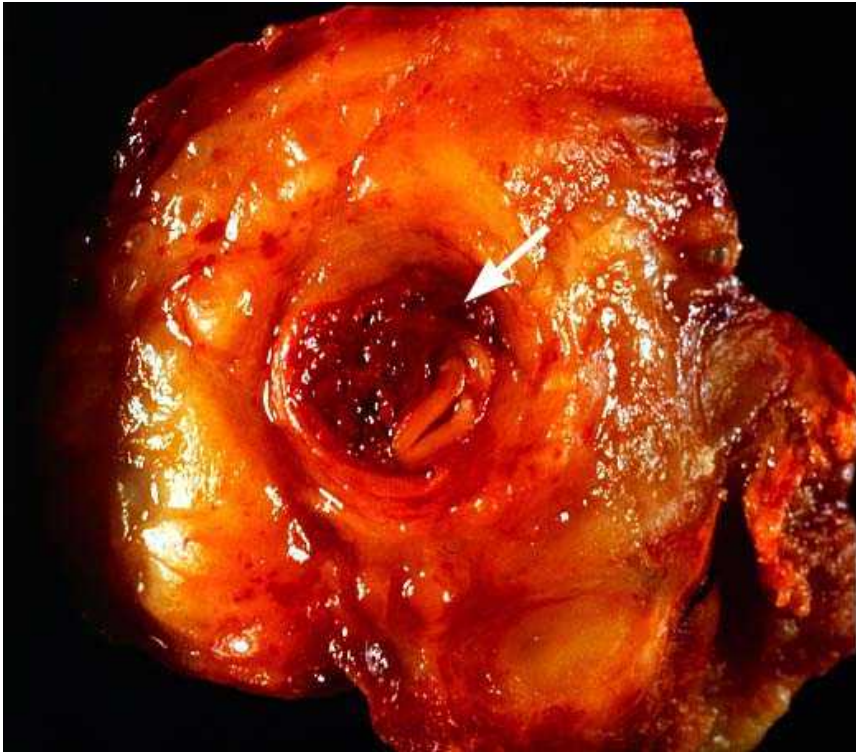
Thrombosis – Three Reasons

- **Problem with the blood**
- **Problem with the endothelium**
- **Problem with the flow**

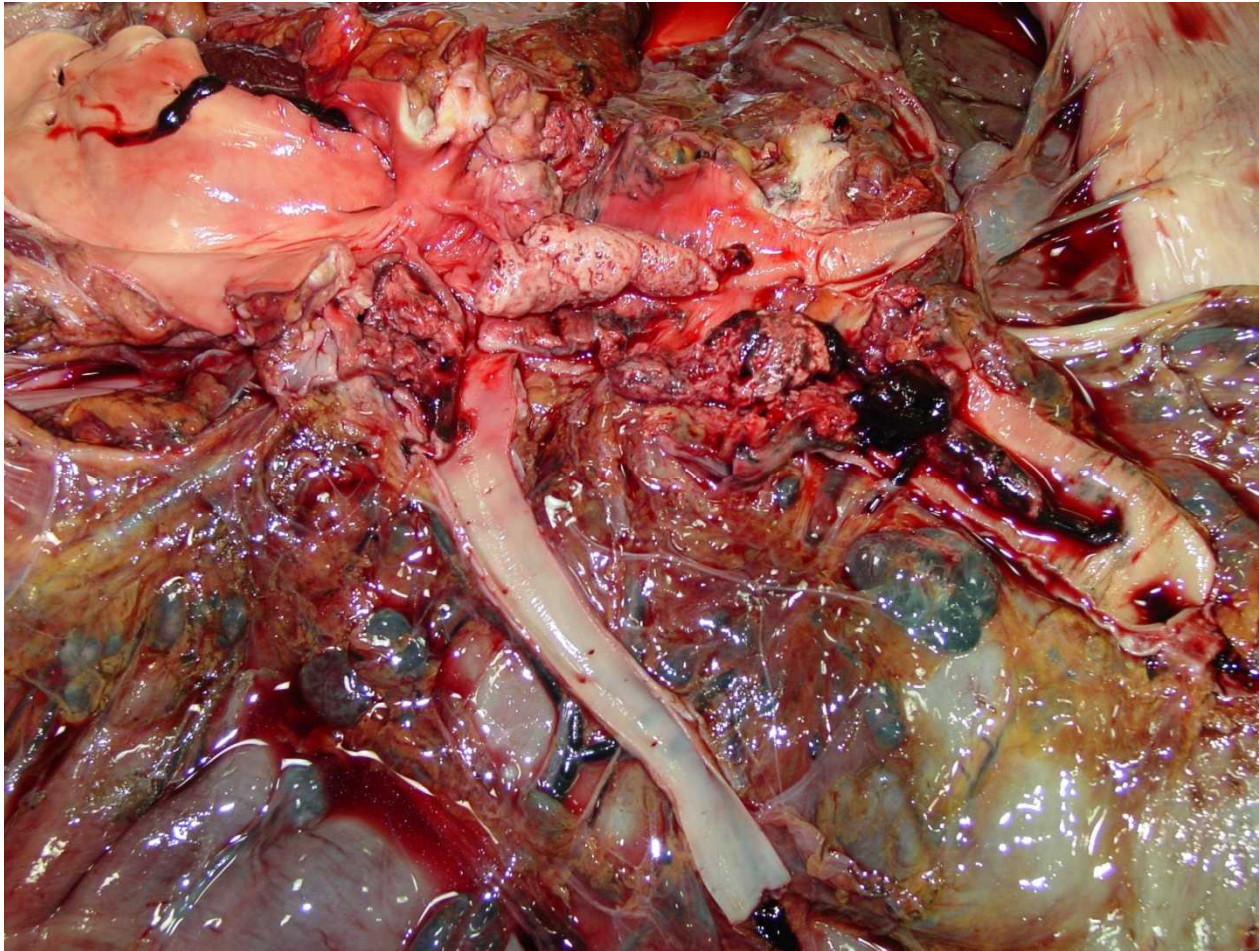


Deep Vein Thrombosis (DVT)







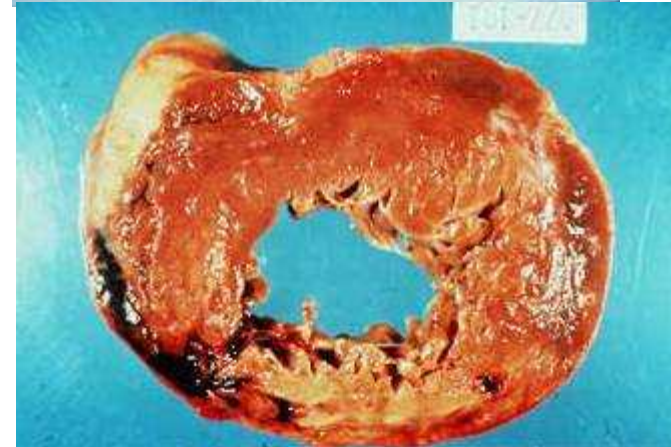
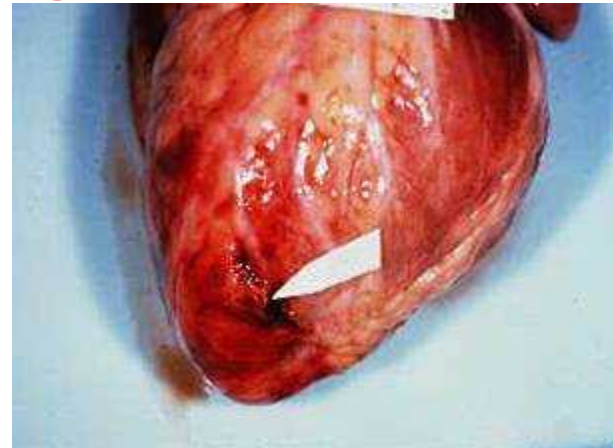
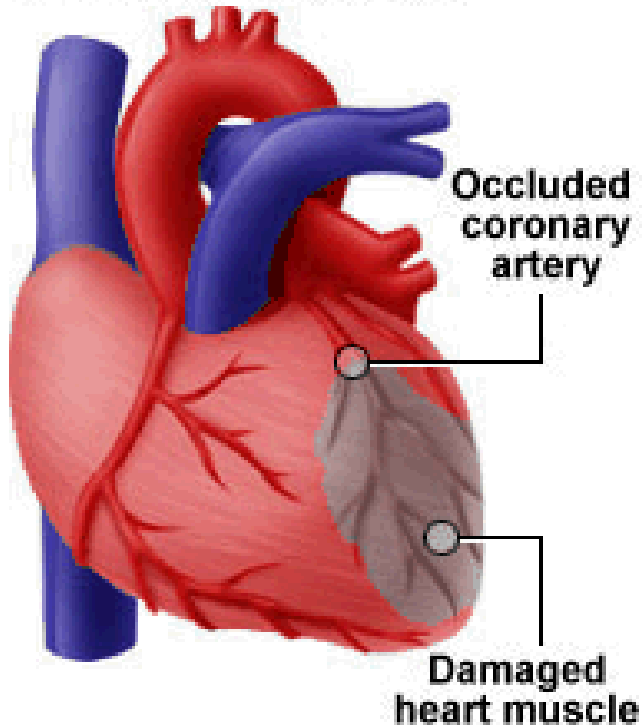




Thrombosis

Clot formation results in blockage of a blood vessel

Blocked blood supply





Embolus

- A detached intravascular mass which travels through the vascular system to lodge at a distant site.

