



EDEMA

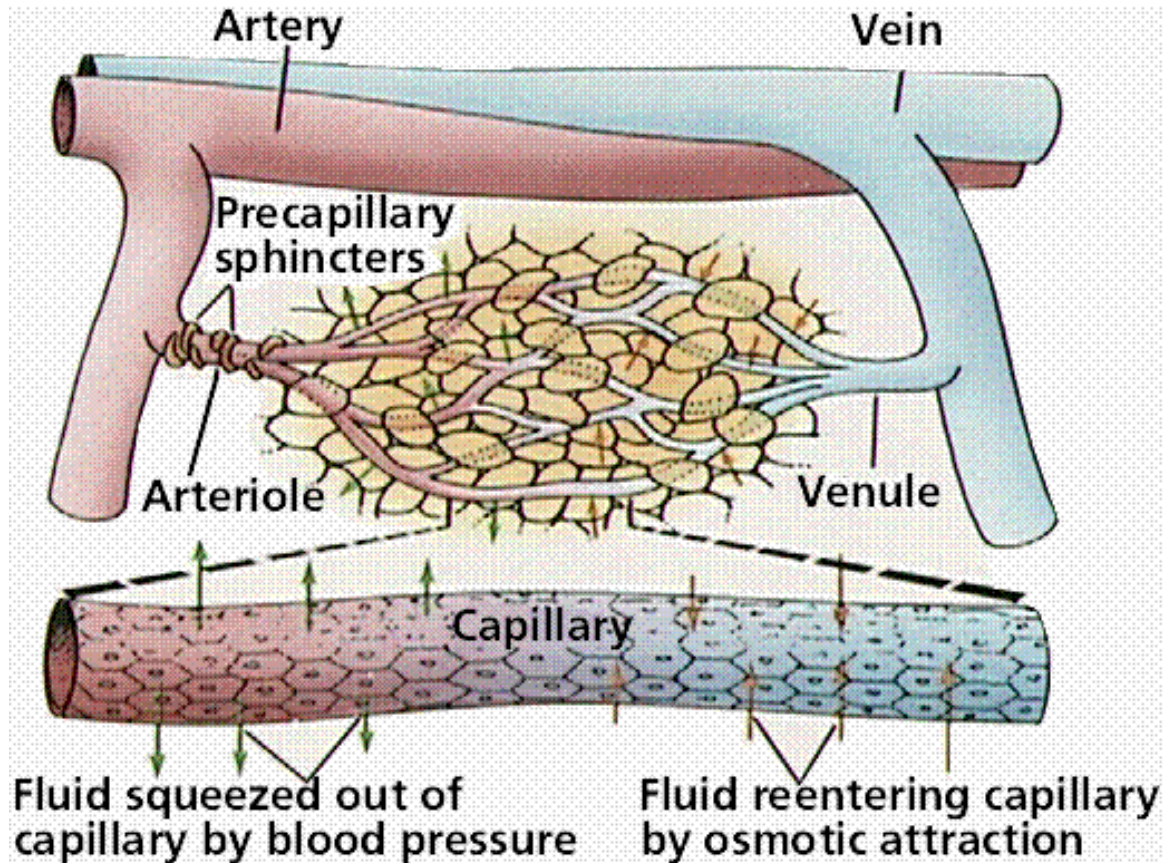


Sandia National Laboratories is a multi-program laboratory managed and operated by Sandia Corporation, a wholly owned subsidiary of Lockheed Martin Corporation, for the U.S. Department of Energy's National Nuclear Security Administration under contract DE-AC04-94AL85000.SAND 201





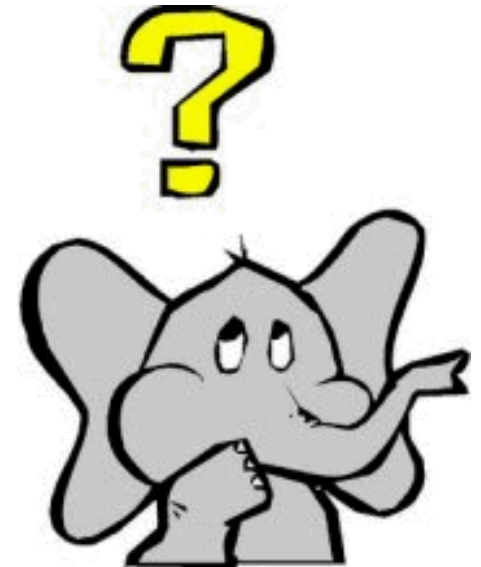
- **Edema – excess serous fluid in a tissue or space**





Reasons for EDEMA

- Increased hydrostatic pressure
- Increased vascular permeability
- Hypoproteinemia
- Blocked lymphatics





Dog



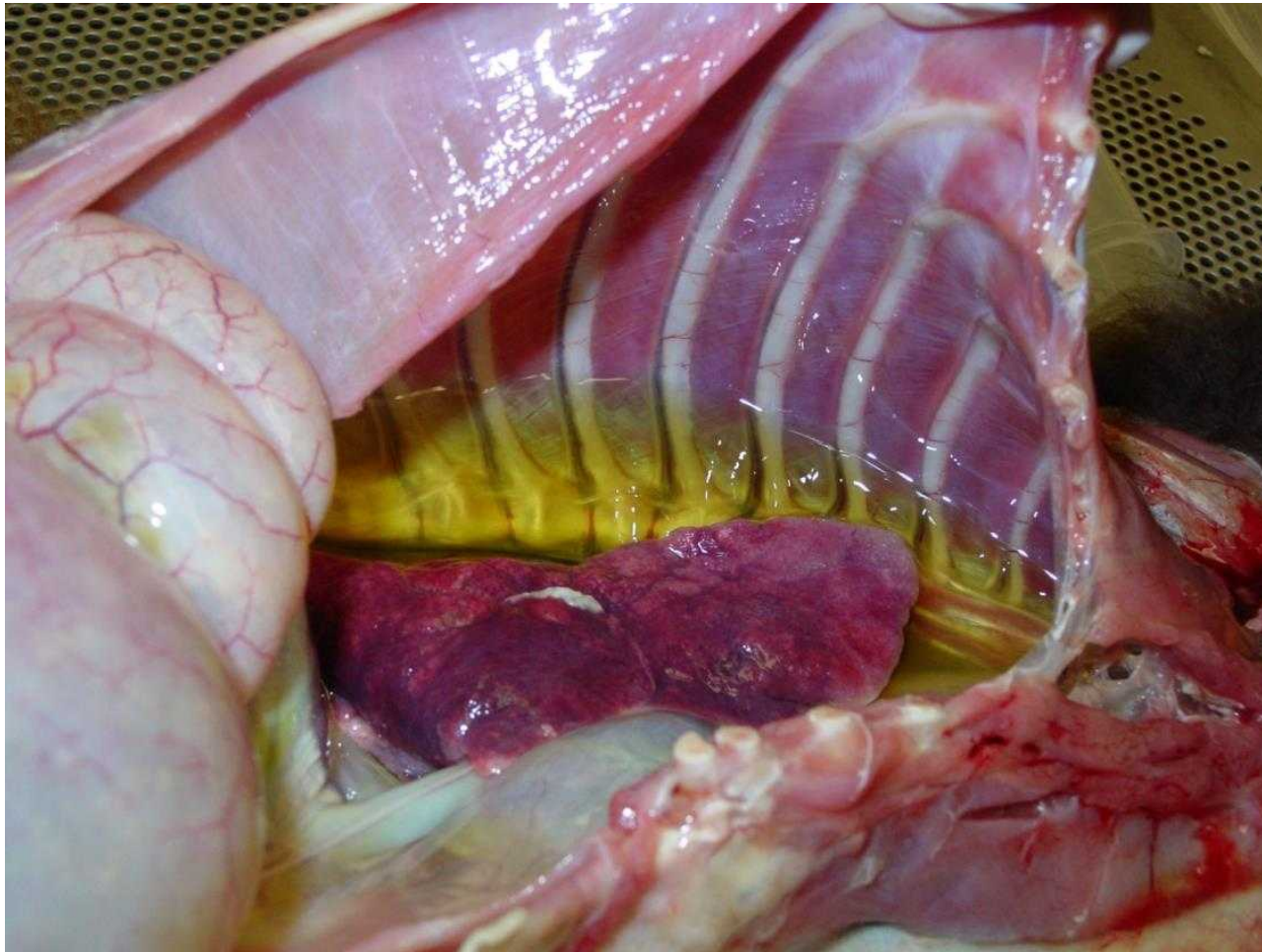


Gastric wall of horse stomach, animal extremely low in protein





Lemur, in heart failure, died; this is the opened chest



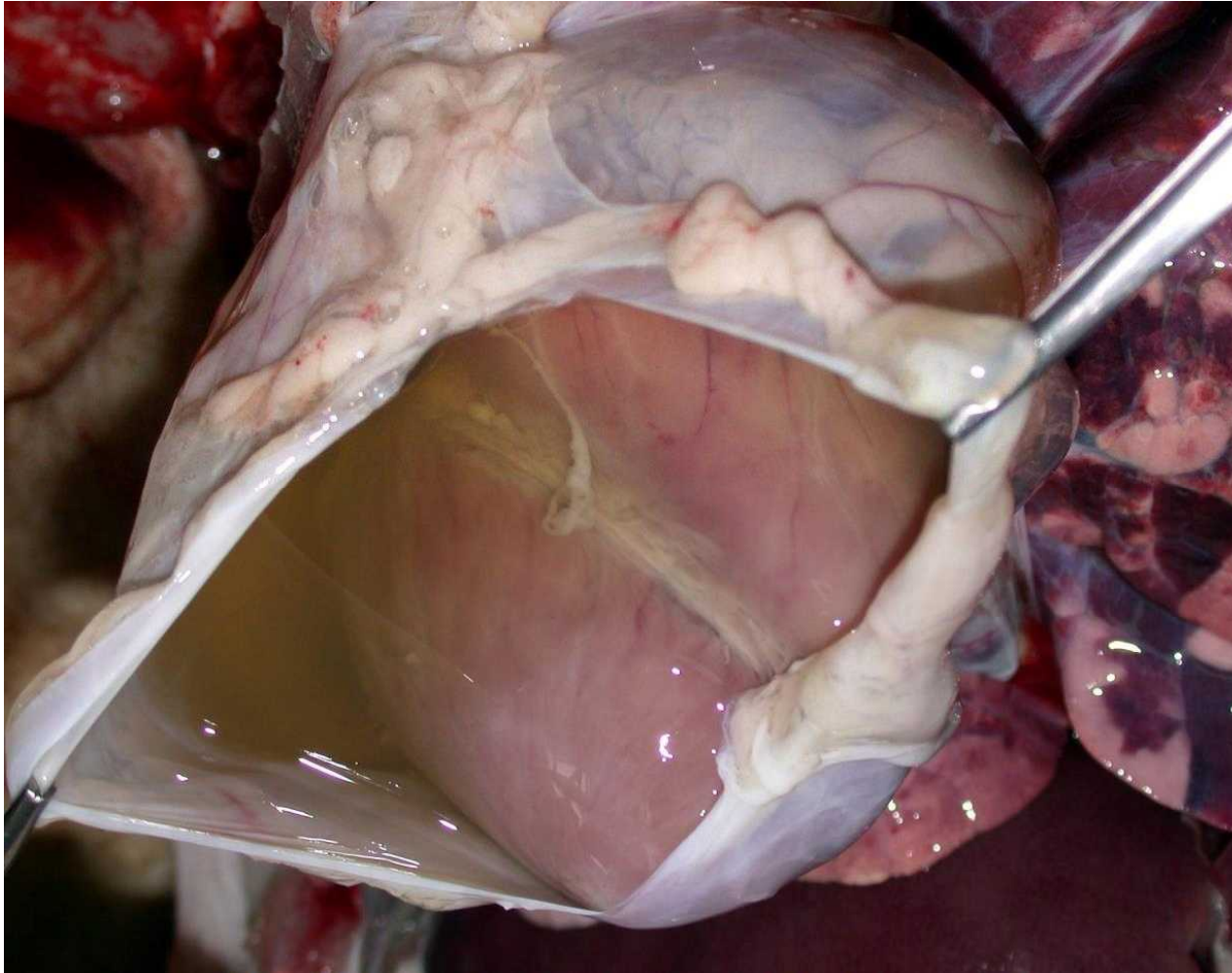


Opened colon of horse, died in shock



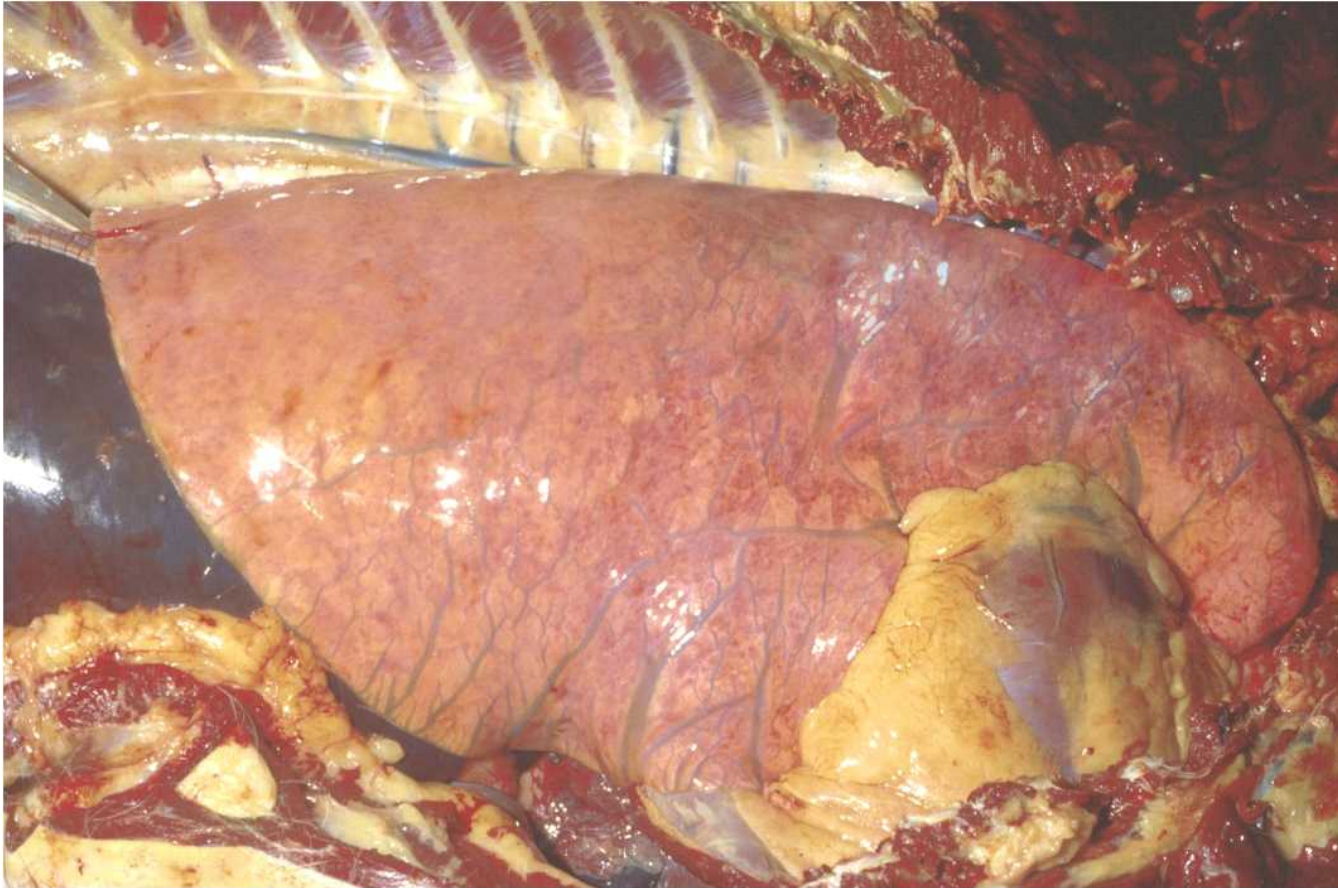


Species: lamb



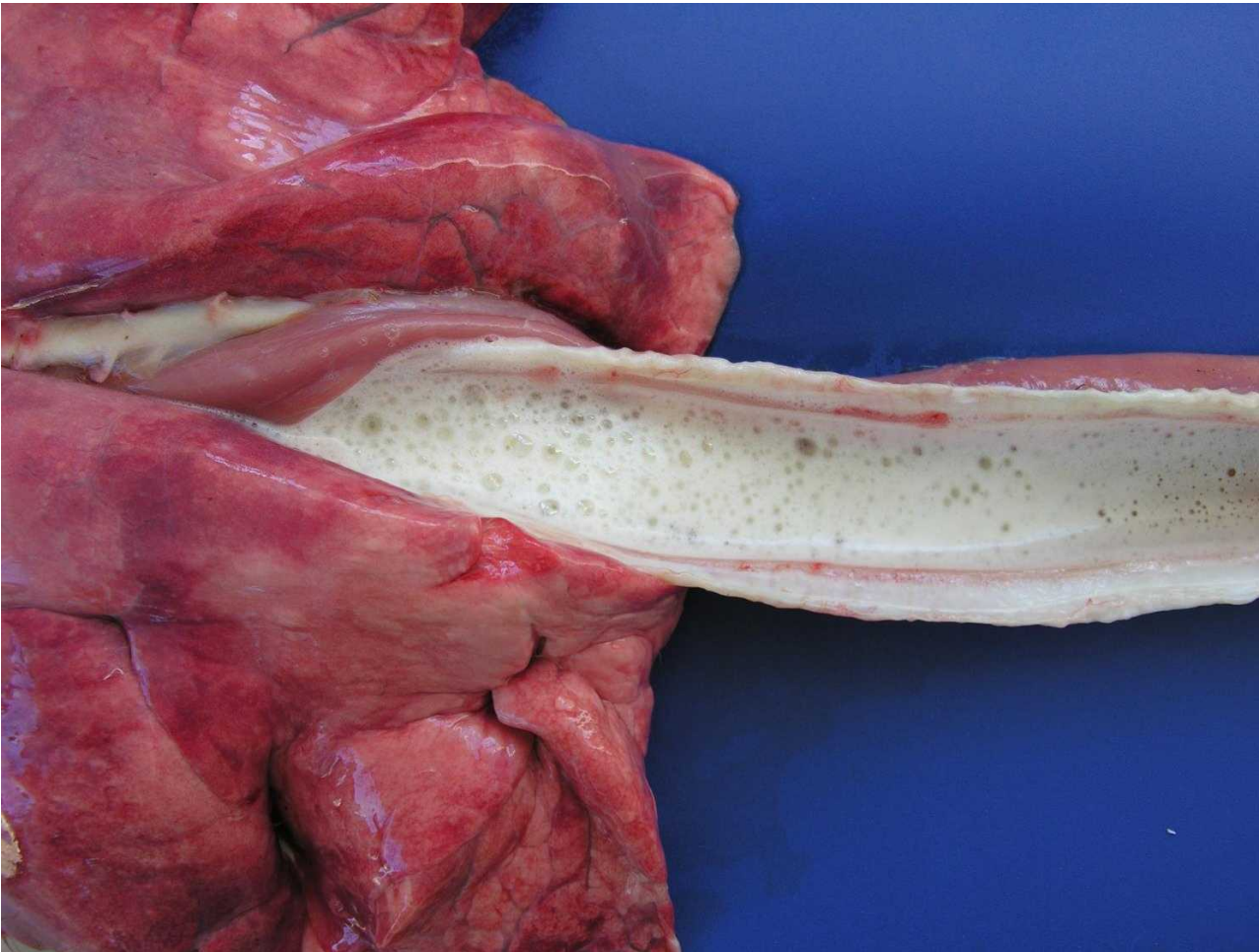


goat





goat





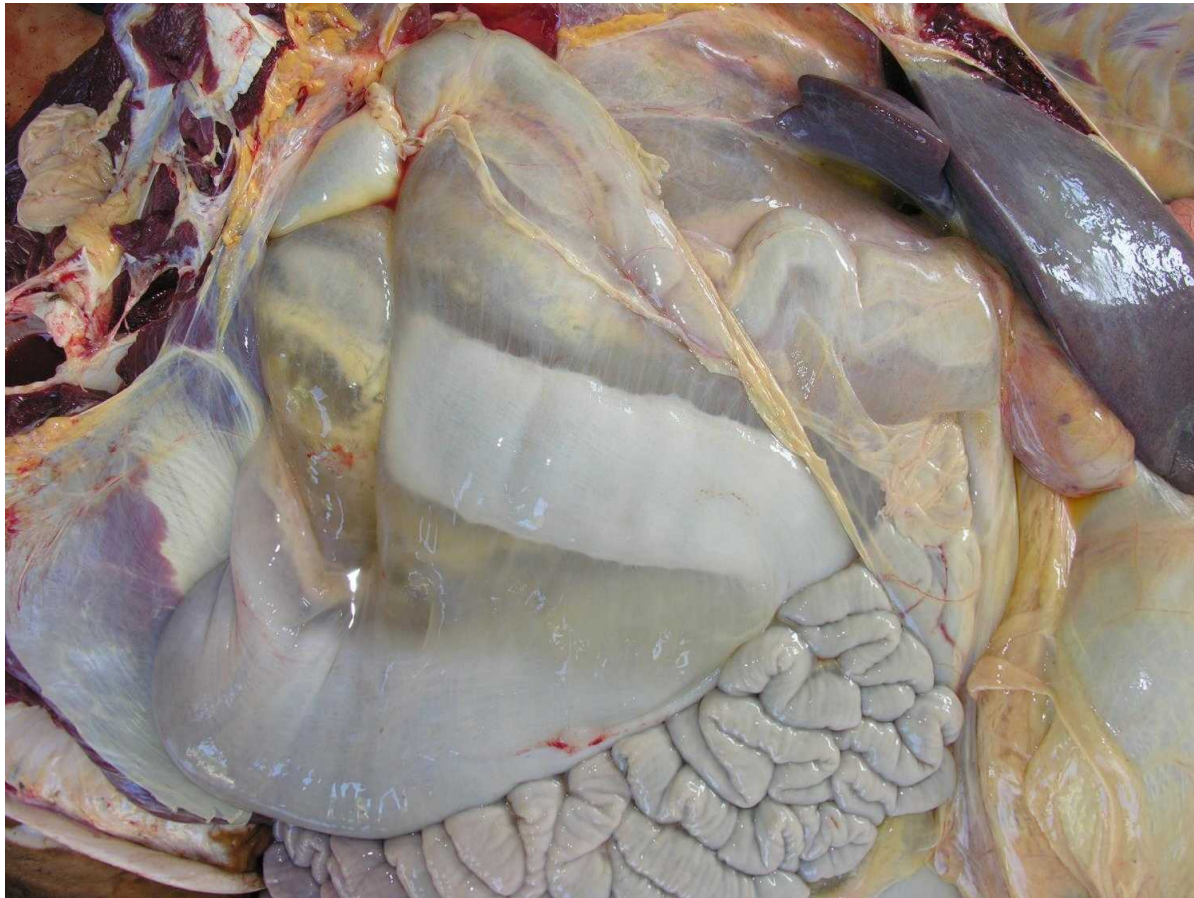
canary



closeup of opened leg



COW





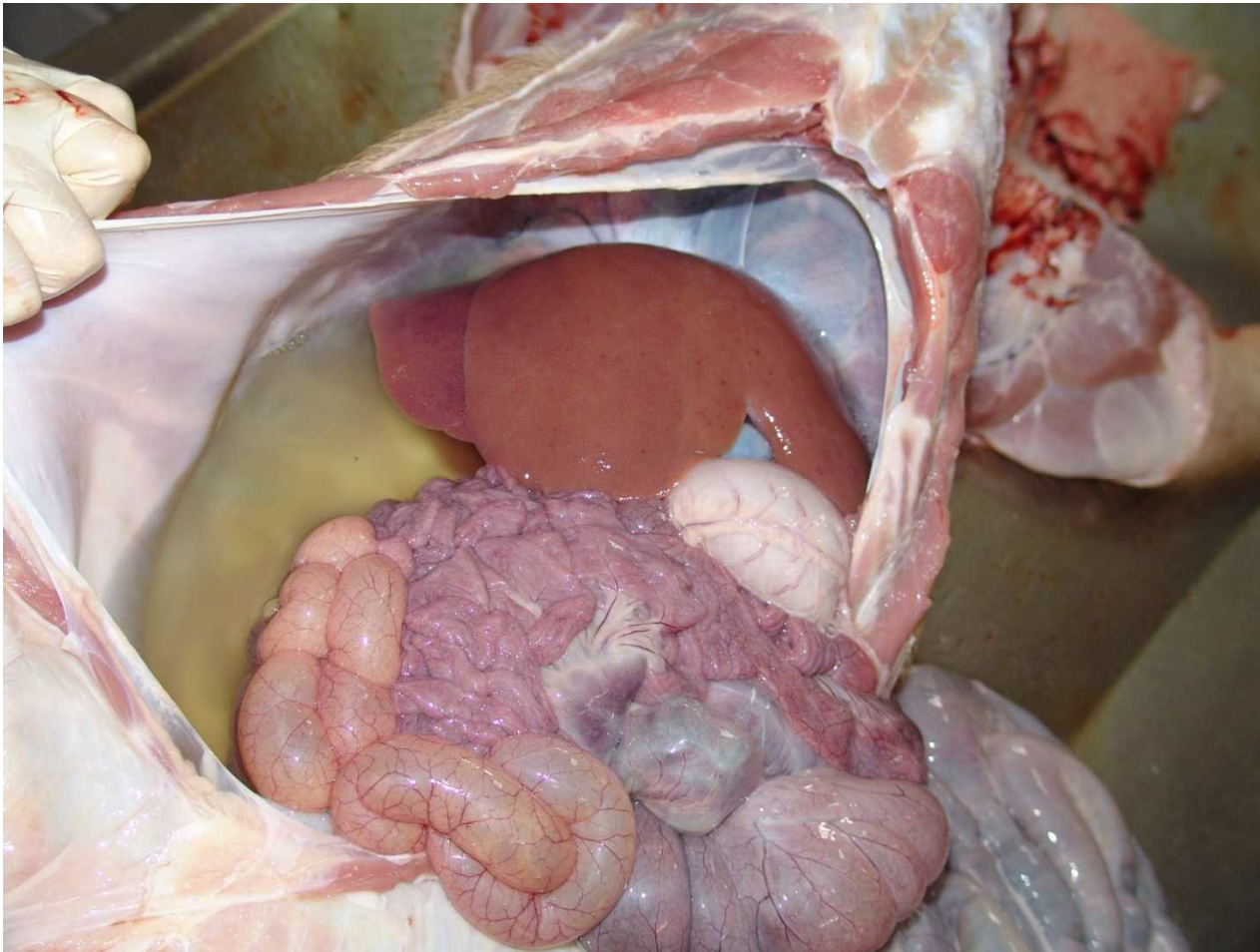


cat





dog





Dog, larynx, severe respiratory distress after certain medication administered

