



SAND2013-1884P

CELL INJURY

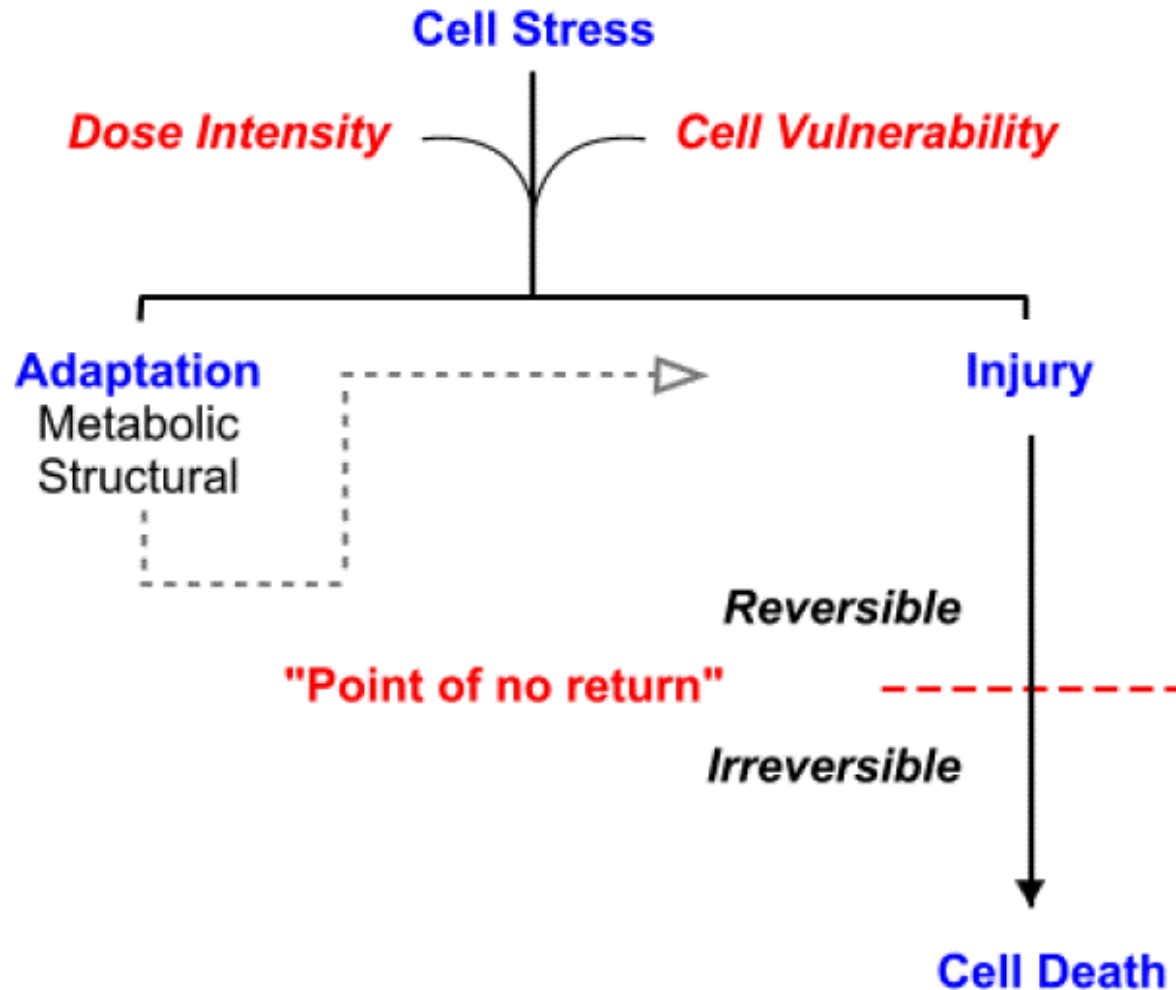


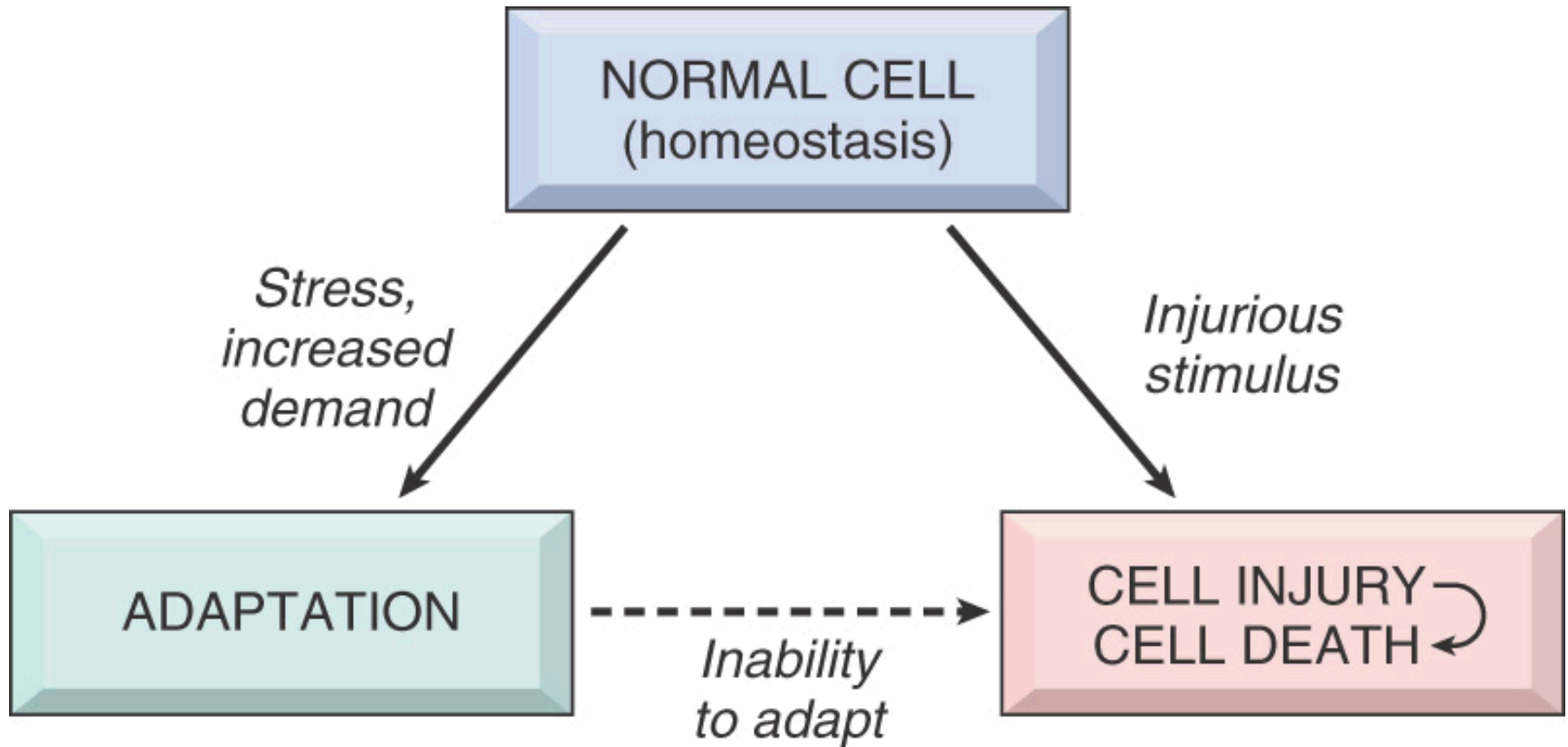
Sandia National Laboratories is a multi-program laboratory managed and operated by Sandia Corporation, a wholly owned subsidiary of Lockheed Martin Corporation, for the U.S. Department of Energy's National Nuclear Security Administration under contract DE-AC04-94AL85000.SAND 201



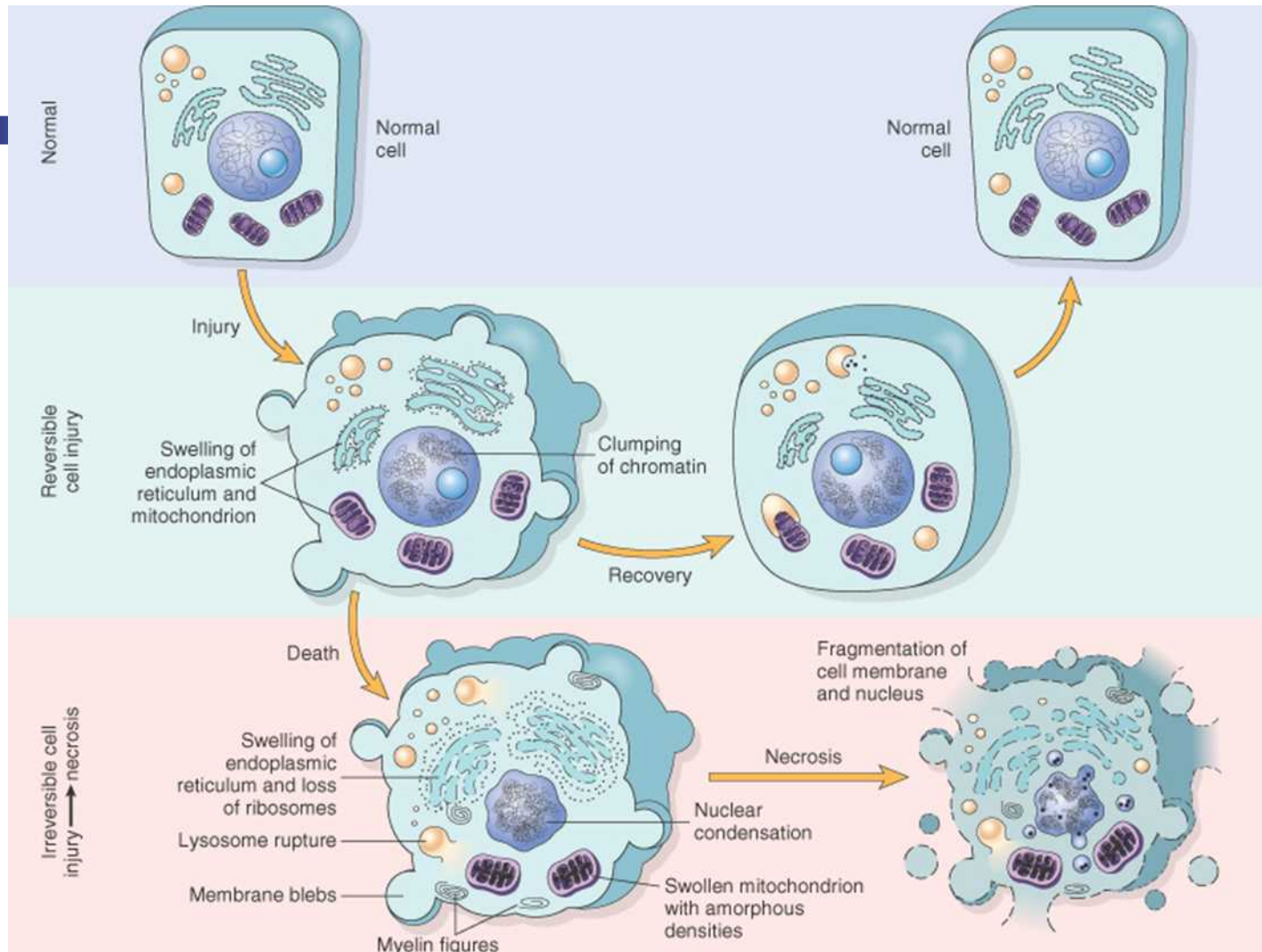


Cell Injury = Disease





(From Kumar V, Abbas A, Fausto N: Robbins & Cotran pathologic basis of disease, ed 7, Philadelphia, 2005, Saunders.)



(From Kumar V, Abbas A, Fausto N: Robbins & Cotran pathologic basis of disease, ed 7, Philadelphia, 2005, Saunders.)

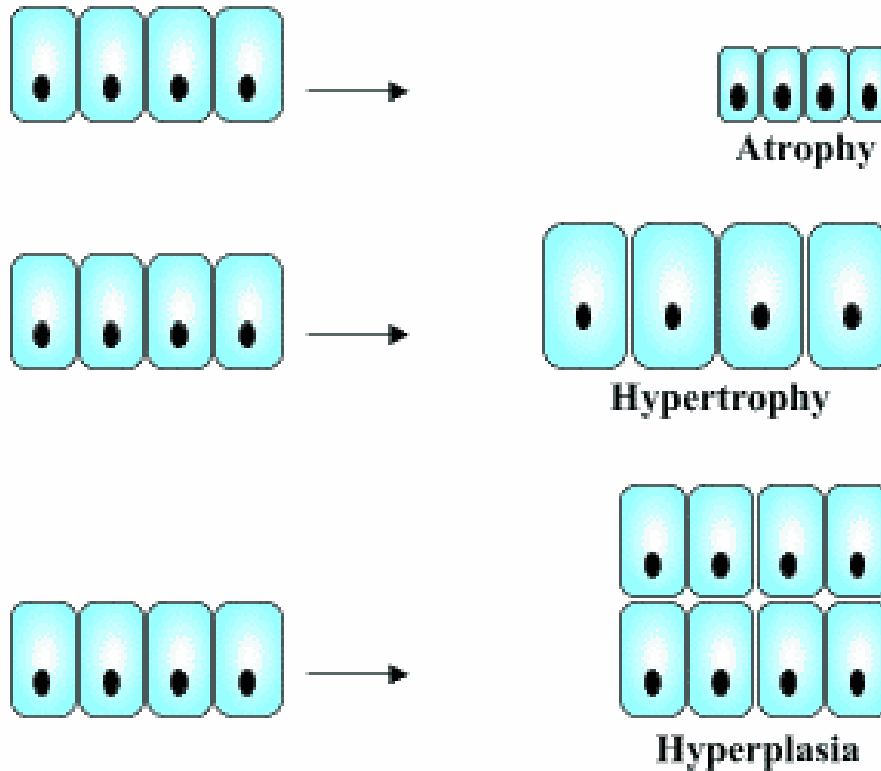


Causes of Cell Injury

- 1.
- 2.
- 3.
- 4.
- 5.
- 6.
- 7.



Cell Adaptation to Stress



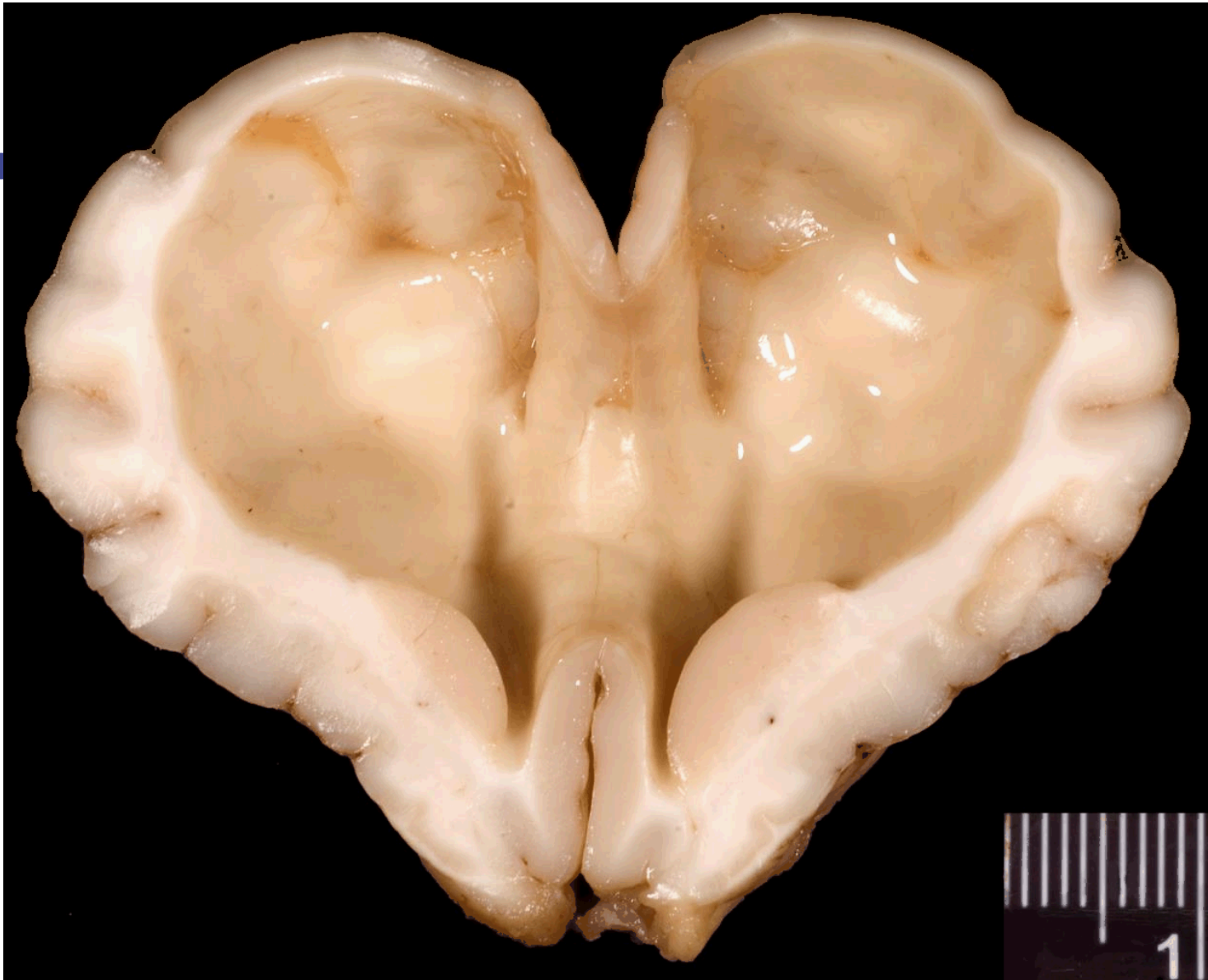


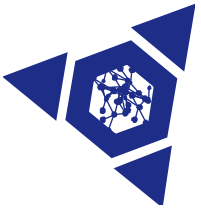
Atrophy

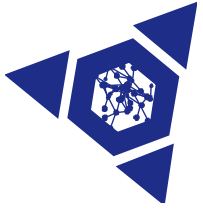
- 1.
- 2.
- 3.
- 4.
- 5.
- 6.
- 7.









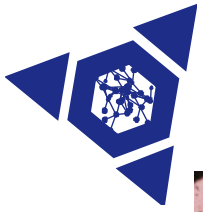


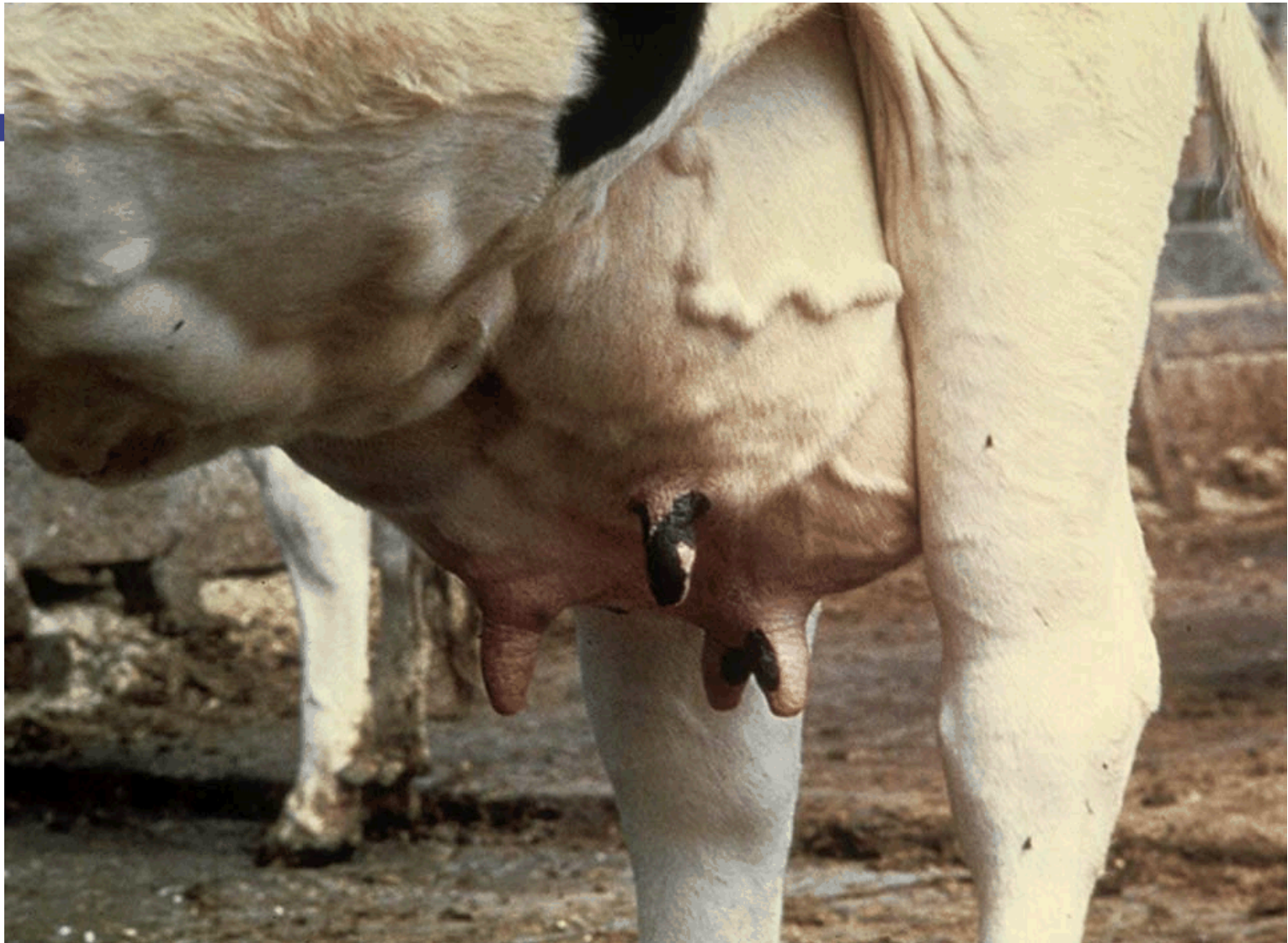
Hypertrophy and Hyperplasia

WHAT IS THE
DIFFERENCE?





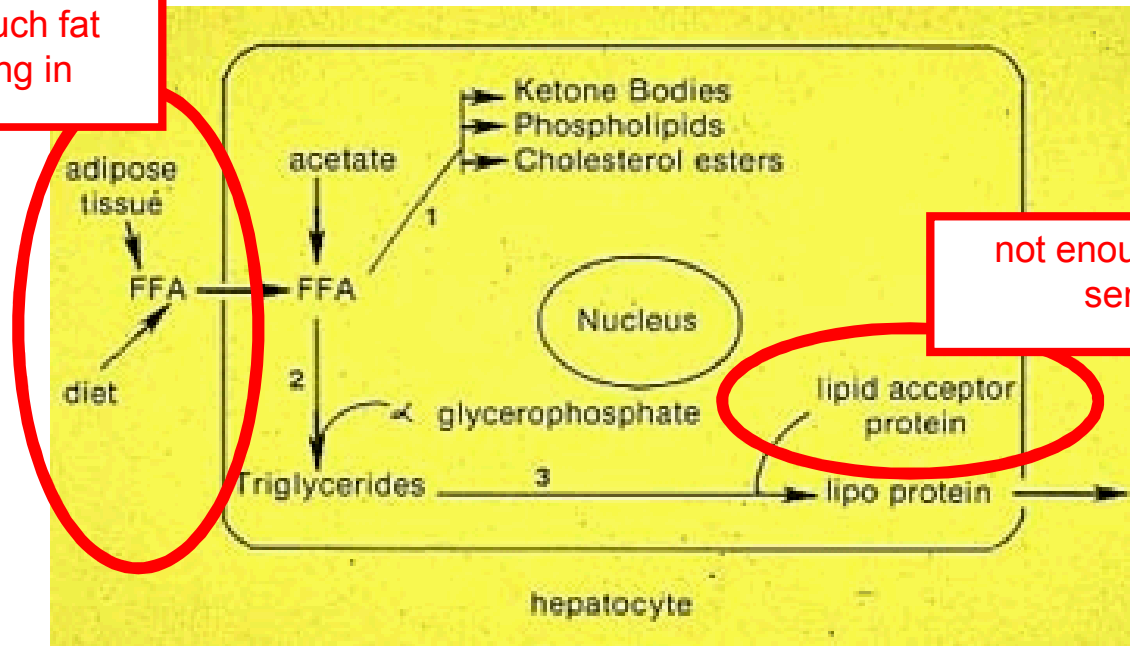






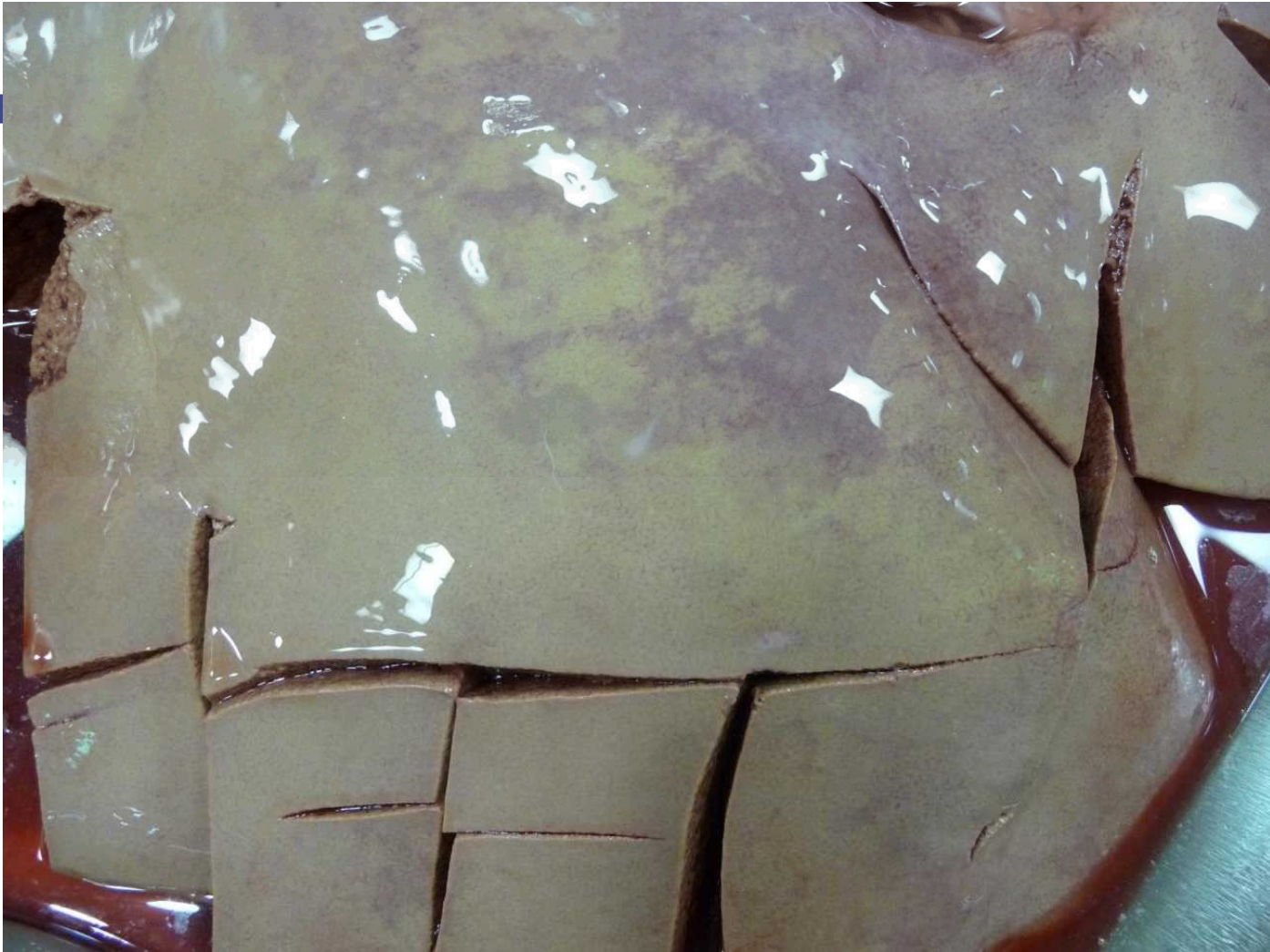
Fatty change

Too much fat
coming in

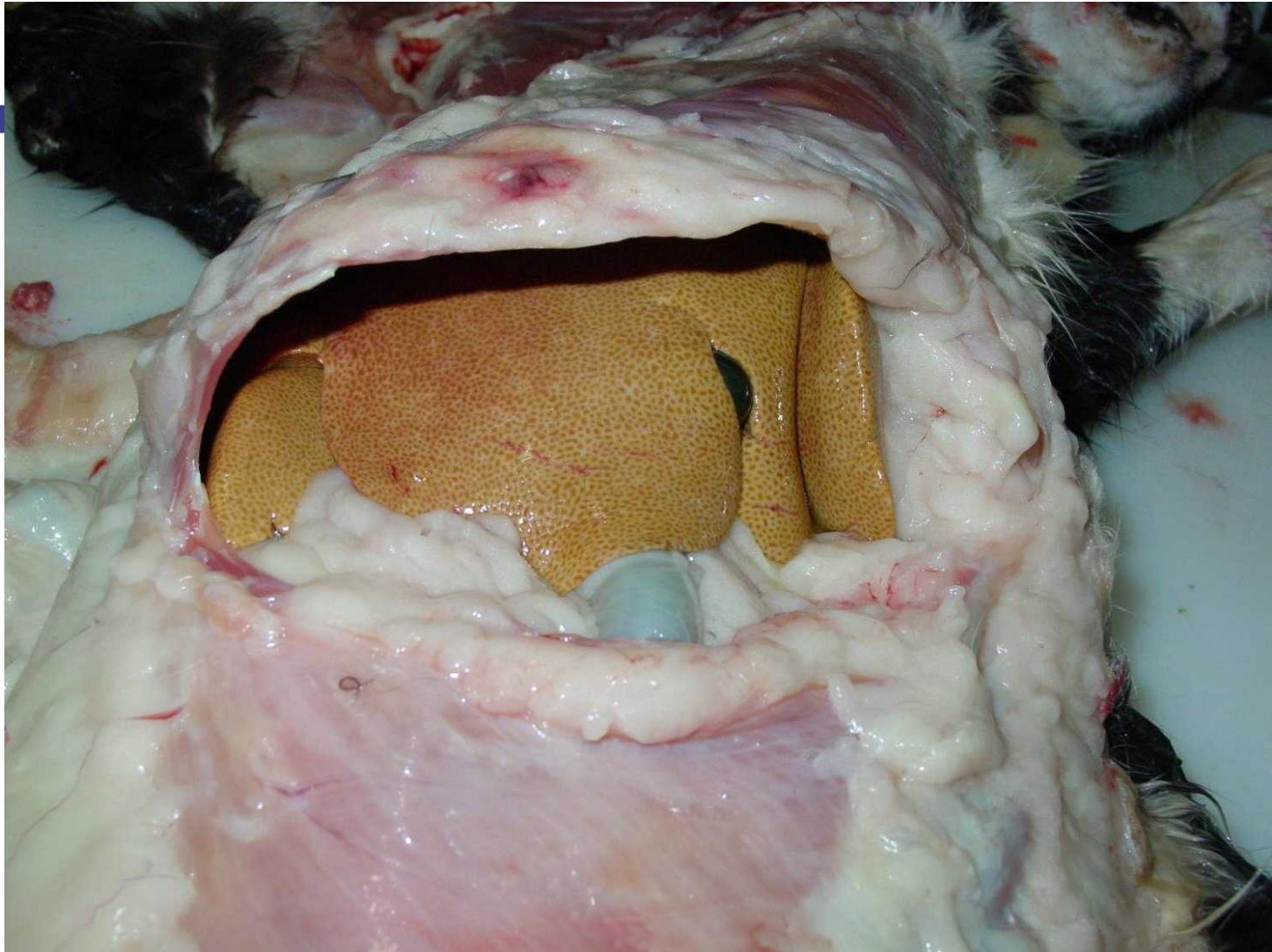


not enough protein to
send it out







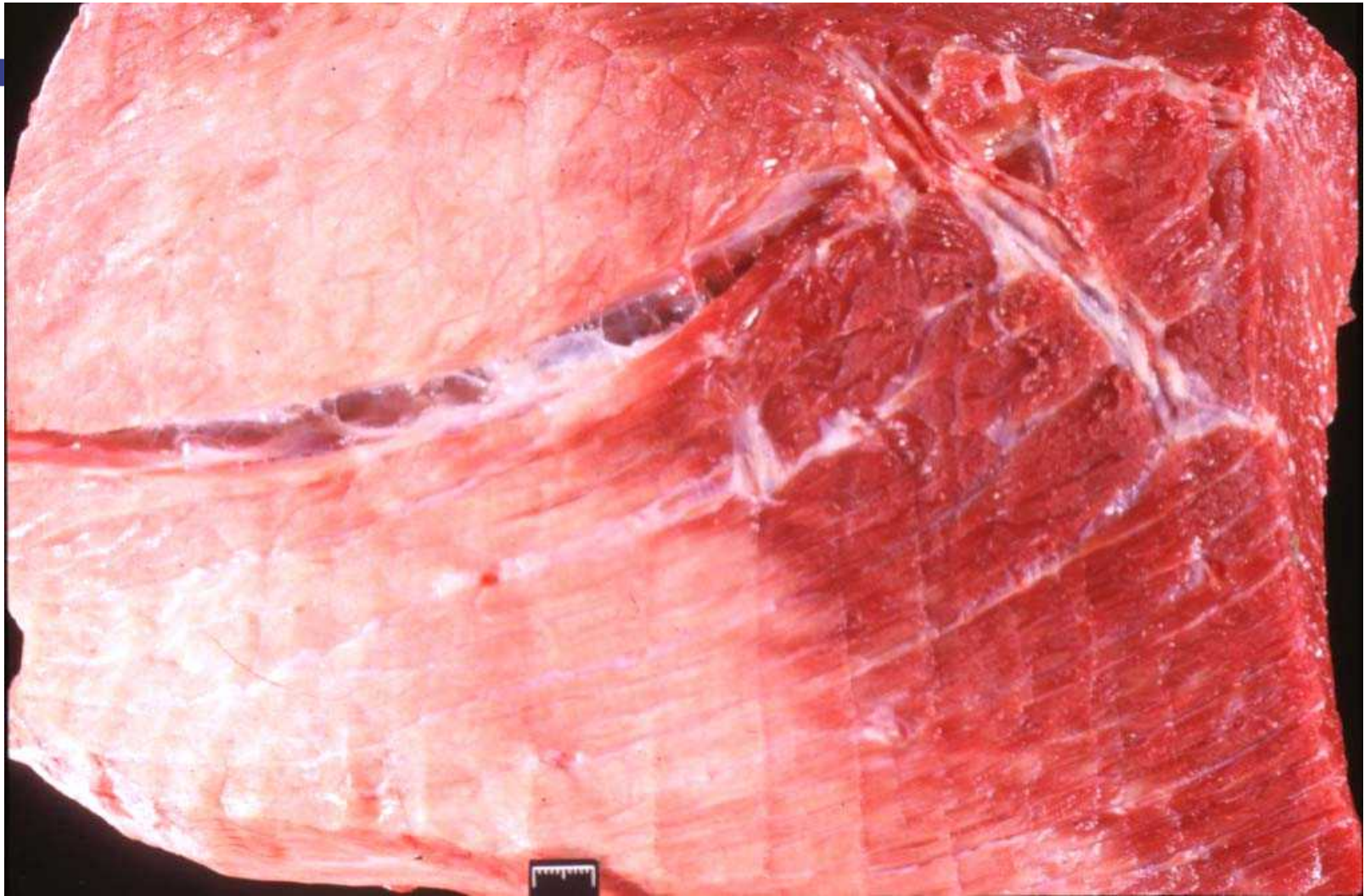




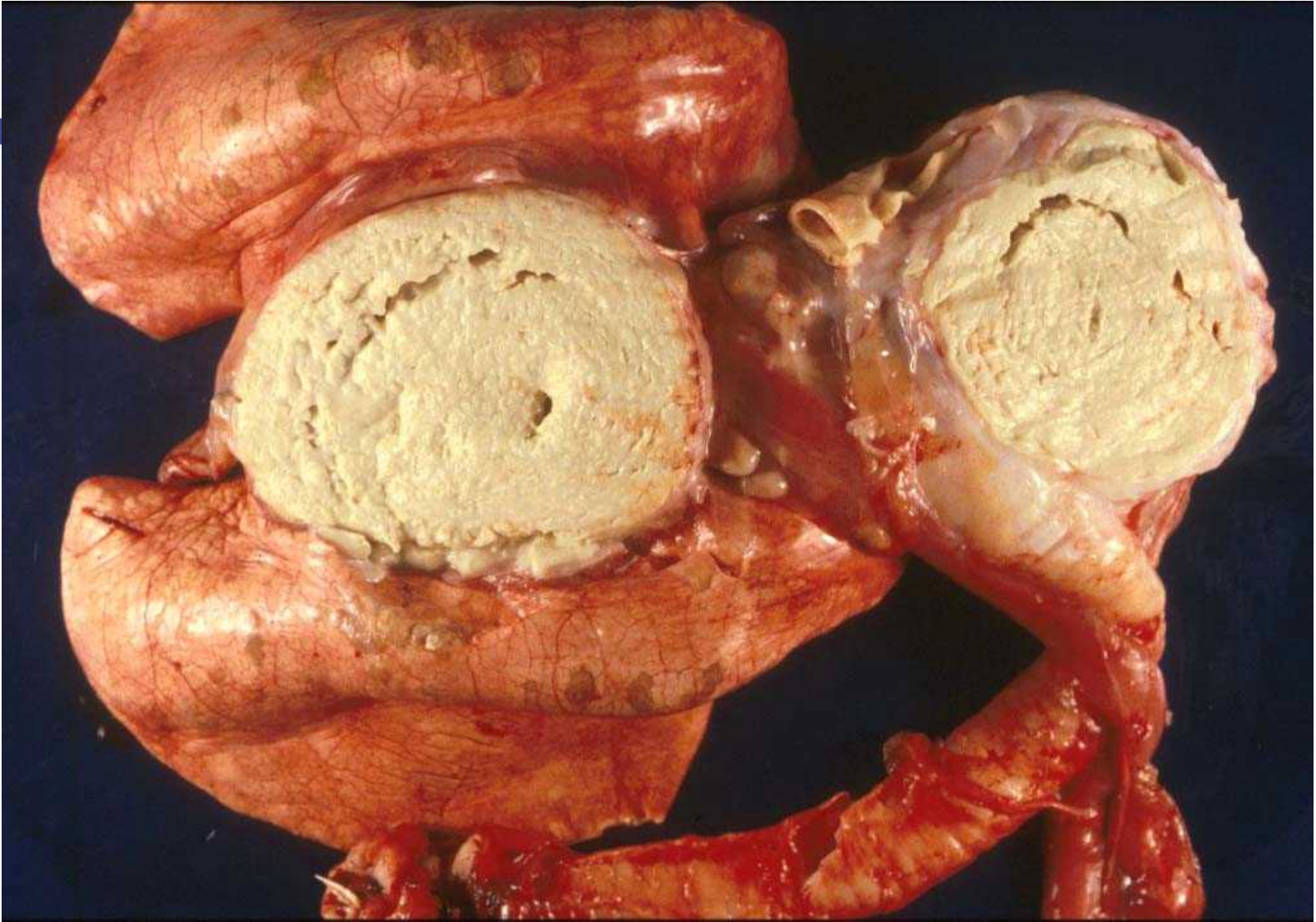


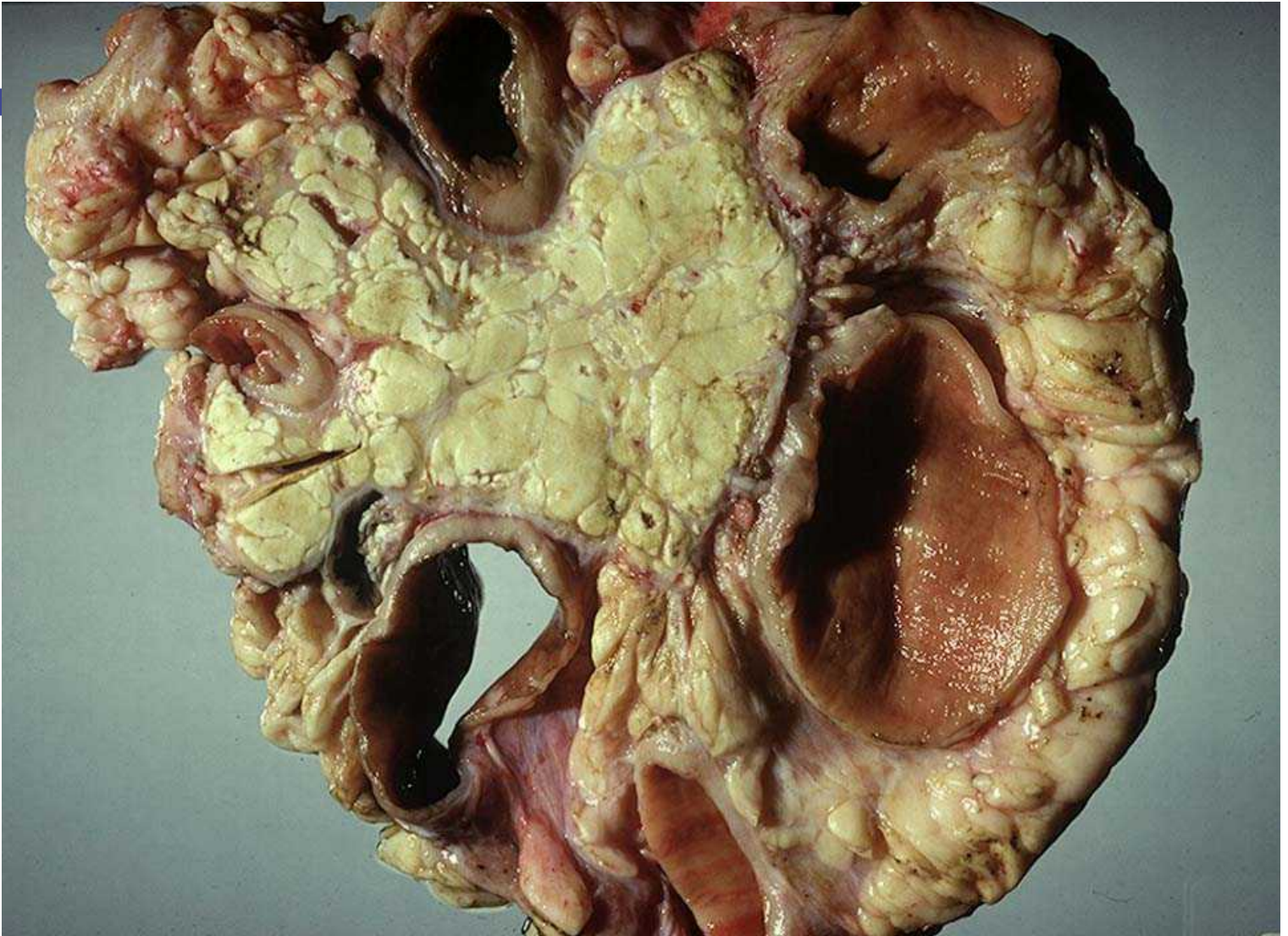
NECROSIS

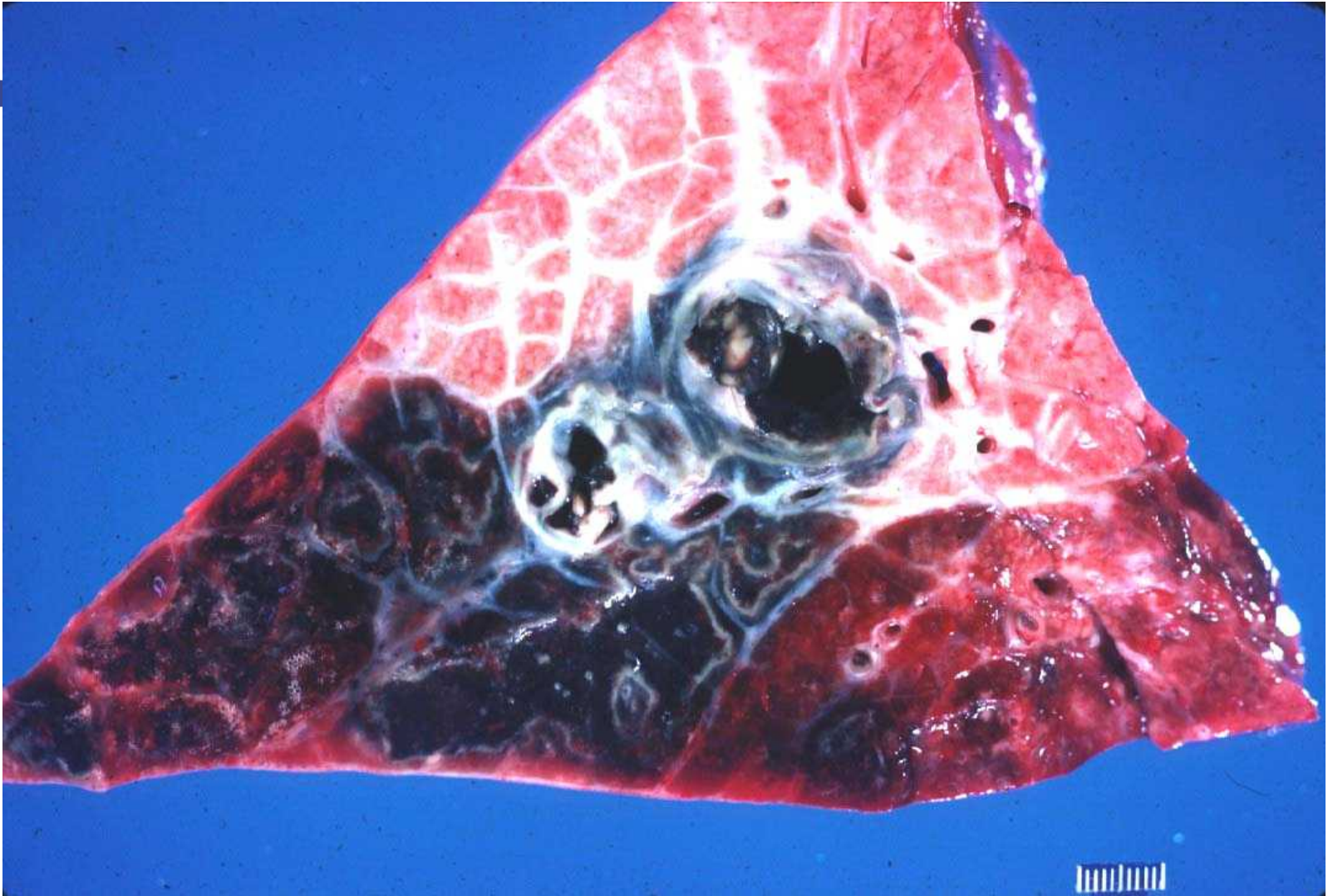
- **Due to ischemia (coagulative)**
- **Liquefactive (due to enzymes from neutrophils)**
- **Caseous (due to enzymes from macrophages)**
- **Gangrenous (due to saprophytic bacteria)**
- **Enzymatic fat necrosis**













Postmortem changes





