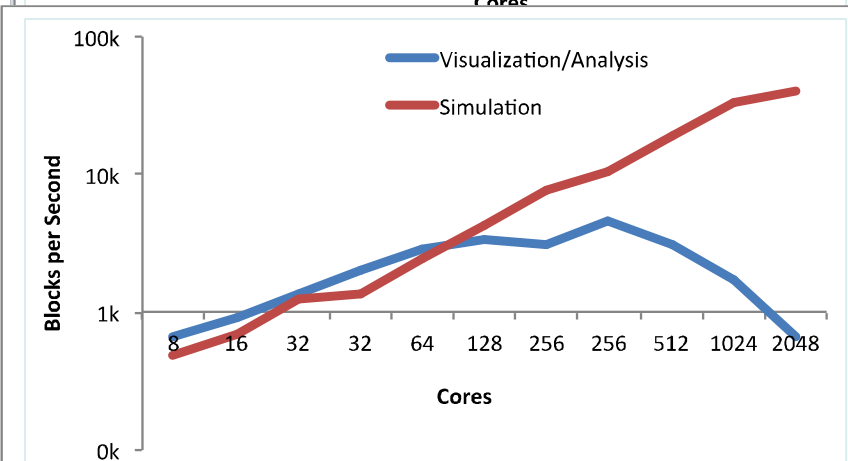
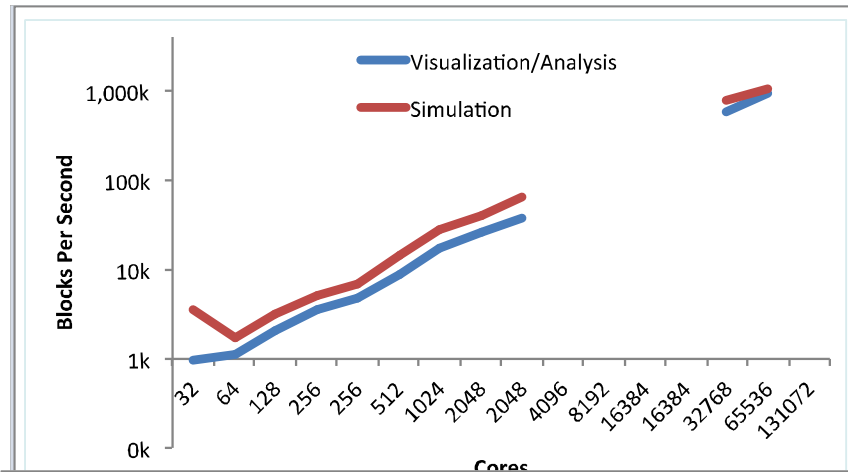


# Paraview Coprocessing Scalability and Capability Testing

- Saving results to disk as simulation runs is expensive.
- ParaView CoProcessing alleviates the need by analysing data in memory
- ParaView must scale as well as the simulation
- ParaView is a large collection of capability
  - Not all will scale well

## Comparison of two different filters scaling

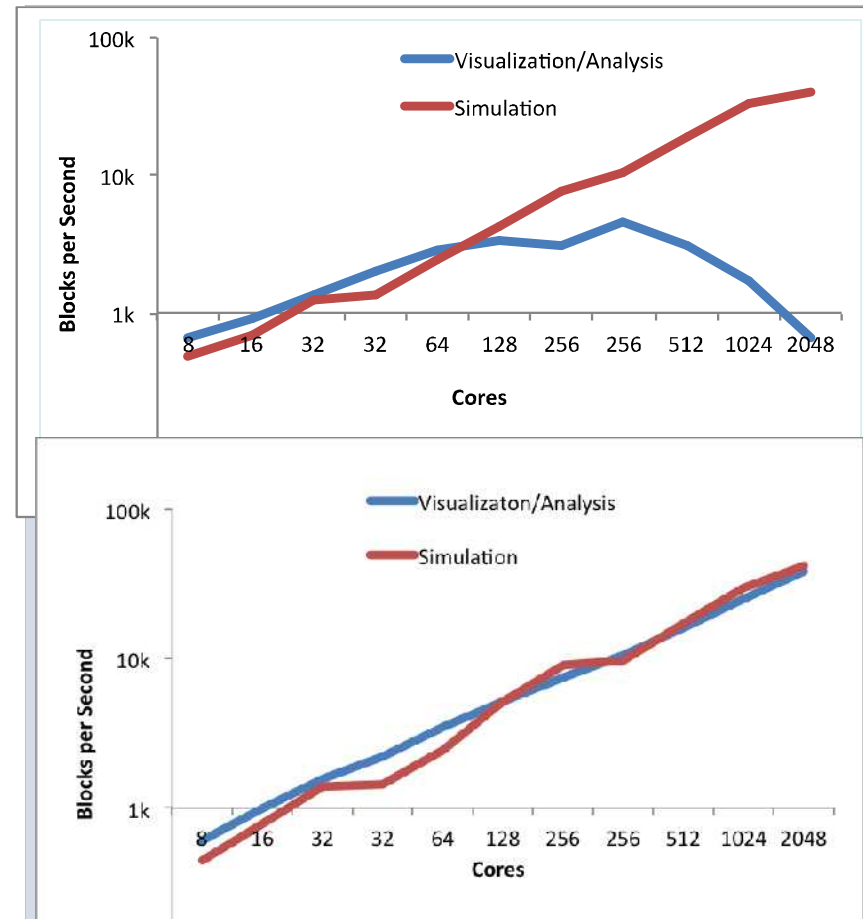


PI: Nathan Fabian  
Code: CTH + ParaView  
Run time: 1.2 Cielo Days

# Paraview Coprocessing Scalability and Capability Testing

- Some will scale
  - With extra information passed in
- Graph shows the filter and CTH modified to pass extra information about neighbors
  - Filter no longer needs an All-to-All to determine it

## Same filter with access to more information



By modifying CTH to pass more information the filter can process more effectively.