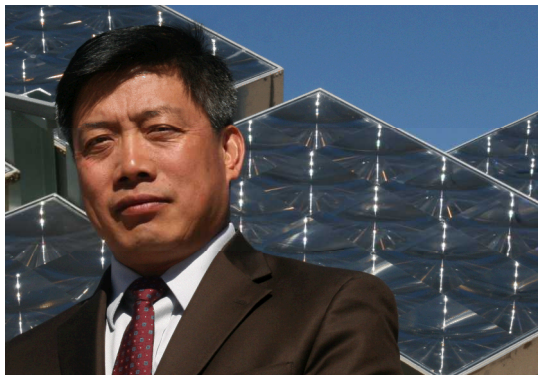


# Sandia Science & Technology Park

*An Internationally Recognized Technology Community*



## The Art of Partnership Creation

“Innovation Engines in an Era of Constraint”

Dublin, Ireland

July 10, 2012



Sandia National Laboratories is a multi-program laboratory managed and operated by Sandia Corporation, a wholly owned subsidiary of Lockheed Martin Corporation, for the U.S. Department of Energy's National Nuclear Security Administration under contract DE-AC04-94AL85000.

where technology works



**SANDIA SCIENCE & TECHNOLOGY PARK**

## Our Vision

### Sandia National Laboratories

- A Department of Energy national laboratory with a national security mission
- Seeking to develop more partnerships with industry

### We envisioned a science park to serve as a partnership tool

- Joint research and development
- Commercialization of technologies
- Business development
- Supplier relations
- Economic development

## Our Problem

- We did not own any land.
- We did not have any identified funds.
- We did not have ties to our community.



## Our Science Park

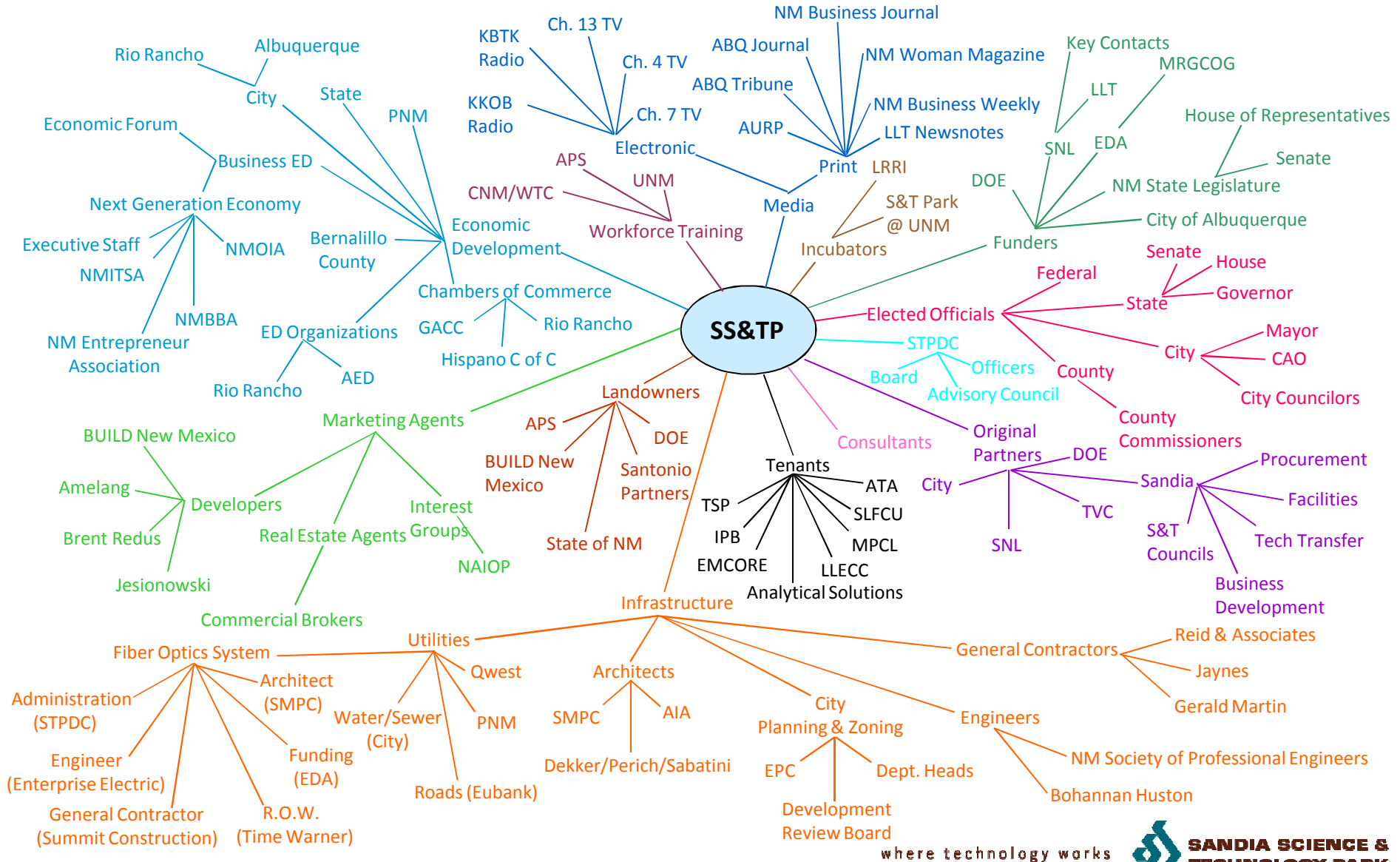


- Founded in 1998
- Master-planned technology community
- Affiliated with Sandia National Laboratories

**Projections: 2 million square feet & 6,000 Jobs**



# We Engaged Stakeholders



where technology works



**SANDIA SCIENCE & TECHNOLOGY PARK**

# We Built a Public-Private Partnership

## ORIGINAL PARTNERS

- Sandia National Laboratories
- Technology Ventures Corporation\*
- City of Albuquerque

## LAND OWNERS

- Albuquerque Public Schools
- BUILD New Mexico/Union Development Corporation\*
- New Mexico State Land Office

## OTHER KEY PARTNERS

- Department of Energy
- Lockheed Martin Corporation\*
- Economic Development Administration
- State of New Mexico
- Bernalillo County
- Public Service Company of New Mexico\*
- Mid-Region Council of Governments
- New Mexico Congressional Delegation

\*Private organizations



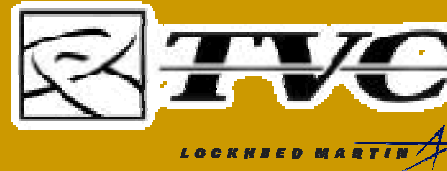
# We Created a Business Model

## ORIGINAL PARTNERS

- Created vision
- Provides executive-level champion
- Provides executive director and program staff
- Manages day to day activities, including marketing



**Sandia  
National  
Laboratories**



- Shared vision
- Funds infrastructure

- Founded Science & Technology Park Development Corporation (STPDC), the nonprofit entity which oversees the Park
- Provides chairman of the board for STPDC
- Manages grants and infrastructure

Park MOU  
Signatories

## LAND OWNERS



**New Mexico State  
Land Office**

- Sell and lease land
- May build and own buildings

## OTHER KEY PARTNERS



**Provides  
planning  
funds**



**Provides  
telecommunications  
infrastructure**



**Provides  
infrastructure**



**Provides  
economic impact  
analyses**



**Provides  
leadership and  
support**

where technology works



**SANDIA SCIENCE &  
TECHNOLOGY PARK**



**Sandia Science & Technology Park**  
*An Internationally Recognized Technology Community*

# We Generated Political Support



where technology works



**SANDIA SCIENCE & TECHNOLOGY PARK**



## We Measured Results

<b>Number of Companies</b>	<b>32</b>
<b>Number of Employees</b>	<b>2474</b>
<b>Number of Buildings</b>	<b>23</b>
<b>Acreage Developed (out of 338.5)</b>	<b>106</b>
<b>Square Feet of Available Space</b>	<b>92,917</b>
<b>Square Feet of Occupied Space</b>	<b>1 Million</b>
<b>Funds In to Sandia from Park Companies since 1998</b>	<b>\$17.7 Million</b>
<b>Contracts from Sandia Procurement to Park Companies since 1998</b>	<b>\$390 Million</b>
<b>Contracts between Park Companies since 1998</b>	<b>\$9.4 Million</b>
<b>Public and Private Investment in the Park since 1998</b>	<div>Public</div> <div>Private</div> <div>Total</div> <div> <b>\$86.6 Million</b>  <b><u>\$263.9 Million</u></b>  <b>\$350.5 Million</b> </div>

# We Measured Economic Impact

<b>Jobs Created</b>	
<b>Direct Jobs Created by Entities in the Park</b>	<b>2,470</b>
<b>Indirect Jobs Created as a Result of the Park</b>	<b>4,123</b>
<b>Total Jobs Created (Direct Plus Indirect)</b>	<b>6,593</b>
<b>Increase in Tax Revenue</b>	
<b>Cumulative Impact on Taxable Consumption (Goods and Services)</b>	<b>\$1,893,200,000</b>
<b>Cumulative Impact on Gross Receipts Tax Revenue to the State of New Mexico</b>	<b>\$73,400,000</b>
<b>Cumulative Impact on Gross Receipts Tax Revenue to City of Albuquerque</b>	<b>\$10,400,000</b>
<b>Increase in Wages</b>	
<b>Cumulative Increase in Wage and Salary Disbursements Attributable to Park Activities</b>	<b>\$3,062,800,000</b>
<b>Salary Comparison</b>	
<b>Average Salary for Each Full-Time Job in the Park</b>	<b>\$74,949</b>
<b>Average Salary for Each Full-Time Job in Albuquerque</b>	<b>\$42,332</b>



## Success Factors

- Affiliation with an R&D Institution
- High Level Champion
- Full-Time Park Manager or Staff
- **Public/Private Partnership**
- Focus on Results

## Participant Discussion

- Problems (?)
- Opportunities (?)
- Questions (?)
  - Jackie Kerby Moore
  - [jskerby@sandia.gov](mailto:jskerby@sandia.gov)
  - [www.sstp.org](http://www.sstp.org)