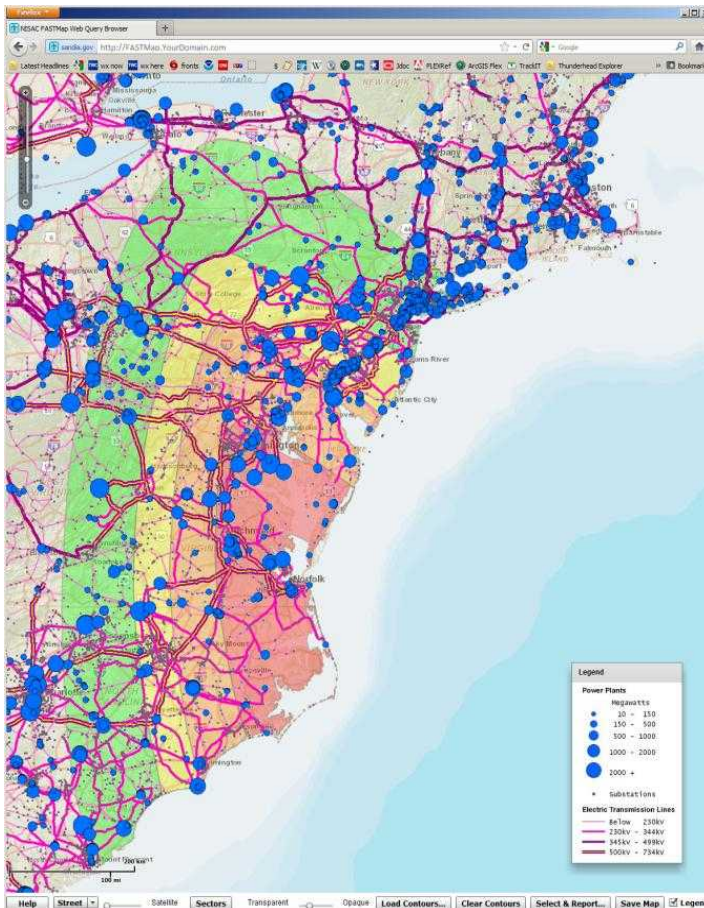




# FASTMap Application

## The Model

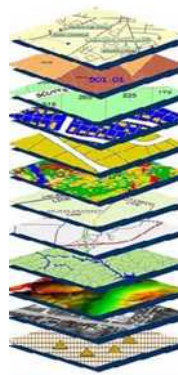
*FASTMap* is a web-based and tablet-based mapping application that browses national infrastructure and emergency resources data. It generates maps and reports of assets at risk within any area of disruption or any analysis area.



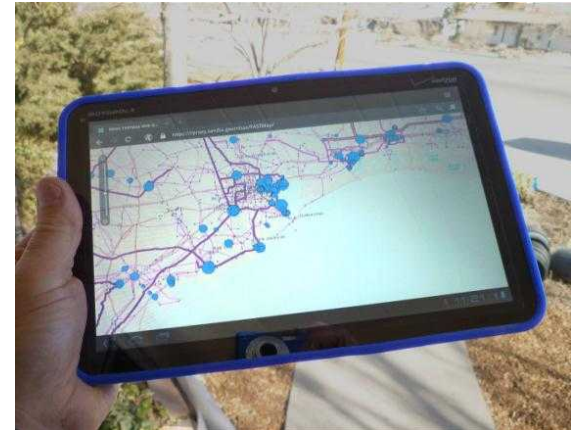
011 Hurricane Irene electric power damage forecast

## Characteristics

*FASTMap* can load arbitrary contours that represent a region of disruption or area of interest. It can dynamically identify and geospatially select infrastructure that lie within the region. It then produces detailed reports listing the selected assets, as well as aggregating counts and sector-level capacities for each contour.



Mapping Services



On a tablet over a 4G cellular network

## Map Sharing

*FASTMap* supports a unique ability to instantly share any authored map with any other *FASTMap* user or group through Channels. With this feature, situational information can be shared to or from the field, between individuals, or amongst groups of dozens, thousands, or more.

## Resources

- Sandia National Laboratories (SNL) Internet mapping services
  - Professionally symbolized infrastructure and emergency resources data
  - Additional mapping services
    - rich variety of base maps
    - satellite imagery for context
- National Geospatial Intelligence Agency (NGA) Homeland Security Infrastructure Program (HSIP) Gold national infrastructure database
  - Immediate data access
  - Publication-quality interactive symbolized mapping interface
    - Available to browsers
    - Available to mobile tablets



# FASTMap Application

*Continued*

FASTMap is an application developed by Sandia National Laboratories in support of the Department of Homeland Security – Homeland Infrastructure Threat and Risk Analysis Center (HITRAC) and the National Infrastructure Simulation and Analysis Center (NISAC).

## Features and Results

- Rapid Mapping
- Asset identification
- Reporting
- Publication-ready formatting
- Sharing ability
- Instant details about developing situations
- Quick dispatch of maps and data details on:
  - People at risk
  - Facilities at risk
  - Hazards, obstacles,
  - Critical resource availability
  - Critical resource limitations

FASTMap creates an environment where critical information about rapidly unfolding scenarios can be generated, analyzed, broadcast, or collaboratively shared with analysts and decisionmakers in real time.

EP Generating Plants List						
Damage Zone: 4						
Plant Name	Operator	Lat	Lon	Primary Generator	Fuel	Capacity
Chalk Point	Mirant Corp.	38.543703	-76.685703	Steam Turbine	No. 6 Fuel Oil	2647
Possum Point	Virginia Electric & Power Co.	38.538622	-77.278569	Steam Turbine	Natural Gas	1943.9
Calvert Cliffs	Constellation Generation Group, LLC	38.434397	-76.441858	Nuclear	Uranium	1828.7
Chesterfield	Virginia Electric & Power Co.	37.383113	-77.382207	Steam Turbine	Bituminous Coal	1799.5
Surry	Virginia Electric & Power Co.	37.166103	-76.697683	Nuclear	Uranium	1695
Morgantown	Mirant Corp.	38.3596	-76.975514	Steam Turbine	Bituminous Coal	1548
Doswell Combined Cycle Facility	NextEra Energy Resources, LLC	37.820232	-77.446041	Combined Cycle	Natural Gas	939
Ladysmith (DOMGEN)	Dominion Generation, Inc.	38.073806	-77.514887	Gas Combustion Turbine	Natural Gas	892.5
Chesapeake Energy Center	Virginia Electric & Power Co.	36.770728	-76.300794	Steam Turbine	Bituminous Coal	812.16
Banning	Mirant Corp.	38.800102	-76.950174	Steam Turbine	No. 6 Fuel Oil	580

## FASTMap disrupted assets report



**National Infrastructure Simulation and Analysis Center**  
P.O. Box 5800 MS 1138, Albuquerque NM 87185-1138  
snl-nisac-dutydesk@sandia.gov



**Sandia National Laboratories**

Sandia National Laboratories is a multi-program laboratory managed and operated by Sandia Corporation, a wholly owned subsidiary of Lockheed Martin Corporation, for the U.S. Department of Energy's National Nuclear Security Administration under contract DE-AC04-94AL85000.



**U.S. DEPARTMENT OF ENERGY**