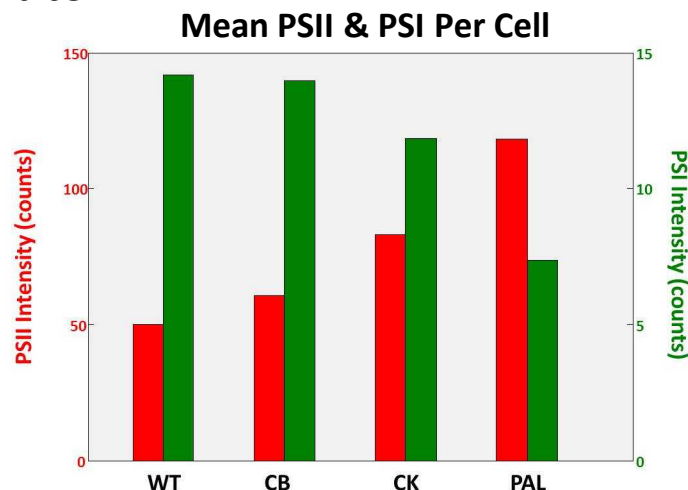
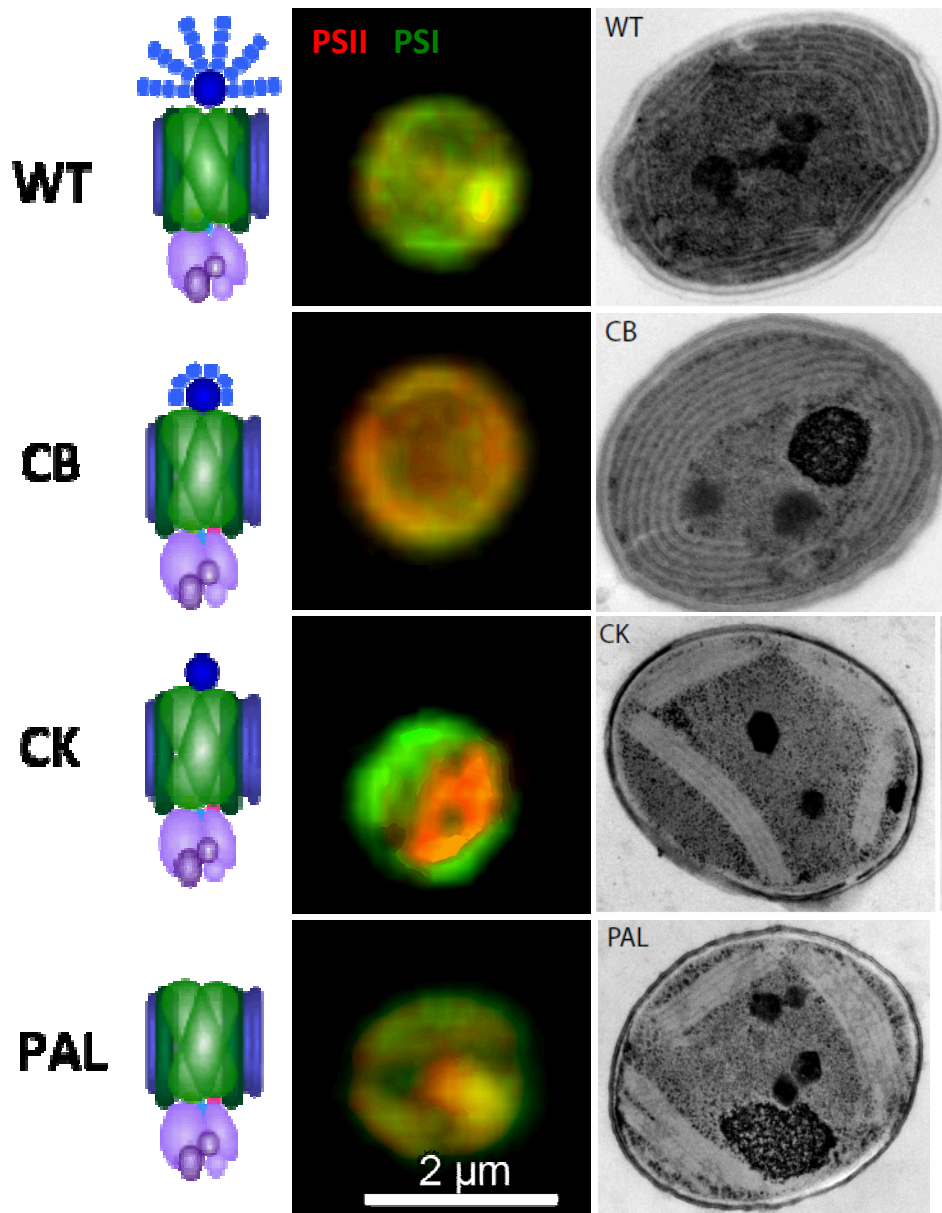


Pigment and membrane characterization in *Synechocystis*

Timlin & Pakrasi Labs

SAND2012-0067P



As antennae size decreases:

- ↓ in thylakoid membrane curvature & cytoplasmic spacing
- ↑ in spatial separation of PSII & PSI
- ↑ in amt PSII, ↓ in amt of PSI on per cell basis
- Relevance: Flexibility of antennae systems, light absorption capabilities of PSI and PSII
- Urban Lab currently conducting BioSANS data on thylakoid stacking