


DWG NO.
SNL-009M-01-TX100-L0

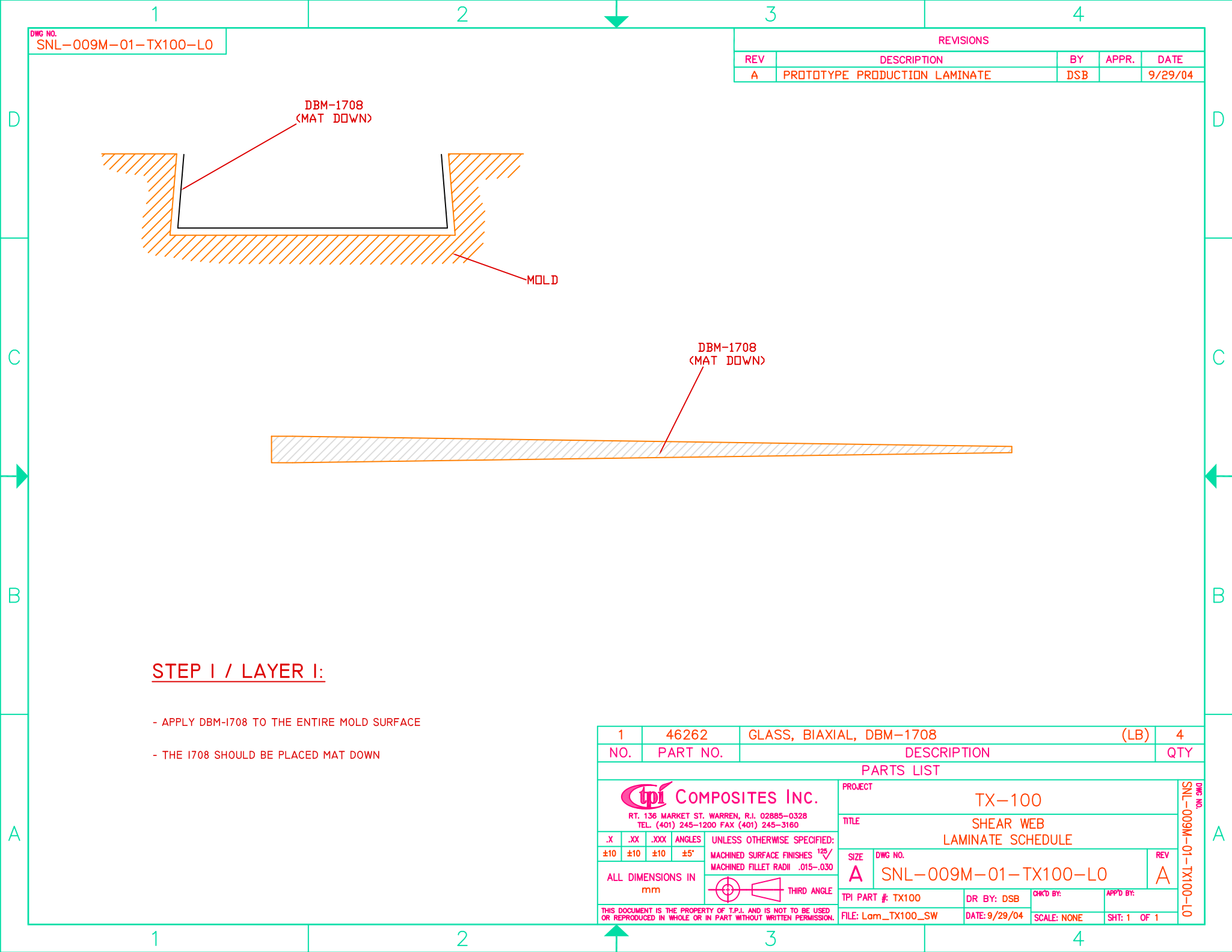
REVISIONS			
REV	DESCRIPTION	SAND2012-7113P E	
A	PROTOTYPE PRODUCTION LAMINATE	DSB	9/29/04

TX-100
9 METER WINDBLADE

LAMINATE SCHEDULE
SHEAR WEB
REV A

NOTE: ALL DIMENSIONS HAVE A
TOLERANCE OF ±10MM

NO.	PART NO.	DESCRIPTION	QTY
PARTS LIST			
 COMPOSITES INC. RT. 136 MARKET ST. WARREN, R.I. 02885-0328 TEL. (401) 245-1200 FAX (401) 245-3160		PROJECT TX-100	SNL-009M-01-TX100-L0 DWG NO.
		TITLE SHEAR WEB LAMINATE SCHEDULE	
.X ±10	.XX ±10	.XXX ±10	ANGLES ±5°
ALL DIMENSIONS IN mm		UNLESS OTHERWISE SPECIFIED: MACHINED SURFACE FINISHES 125✓ MACHINED FILLET RADII .015-.030	SIZE A
		THIRD ANGLE	DWG NO. SNL-009M-01-TX100-L0
THIS DOCUMENT IS THE PROPERTY OF T.P.I. AND IS NOT TO BE USED OR REPRODUCED IN WHOLE OR IN PART WITHOUT WRITTEN PERMISSION.		TPI PART #: TX100	REV A
		DR BY: DSB	FILE: Lam_TX100_SW
		CHK'D BY:	DATE: 9/29/04
		APP'D BY:	SCALE: NONE
		SHT: 1	OF 1





DWG NO.
SNL-009M-01-TX100-L0

REVISIONS				
REV	DESCRIPTION	BY	APPR.	DATE
A	PROTOTYPE PRODUCTION LAMINATE	DSB		9/29/04

STEP I / LAYER I:

- APPLY DBM-I708 TO THE ENTIRE MOLD SURFACE
- THE I708 SHOULD BE PLACED MAT DOWN

1	46262	GLASS, BIAXIAL, DBM-1708	(LB)	4
NO.	PART NO.	DESCRIPTION		QTY
PARTS LIST				
 COMPOSITES INC. RT. 136 MARKET ST. WARREN, R.I. 02885-0328 TEL. (401) 245-1200 FAX (401) 245-3160		PROJECT TX-100		
.X .XX .XXX ANGLES ±10 ±10 ±10 ±5°		TITLE SHEAR WEB LAMINATE SCHEDULE		
UNLESS OTHERWISE SPECIFIED: MACHINED SURFACE FINISHES 125/✓ MACHINED FILLET RADII .015-.030		SIZE A		DWG NO. SNL-009M-01-TX100-L0
ALL DIMENSIONS IN mm		REV A		
		THIRD ANGLE		
THIS DOCUMENT IS THE PROPERTY OF T.P.I. AND IS NOT TO BE USED OR REPRODUCED IN WHOLE OR IN PART WITHOUT WRITTEN PERMISSION.		TPI PART #: TX100		
		DR BY: DSB		CHK'D BY:
		FILE: Lam_TX100_SW		APP'D BY:
		DATE: 9/29/04		SCALE: NONE
		SHT: 1		OF 1

DWG NO.
SNL-009M-01-TX100-L0

DWG NO.
SNL-009M-01-TX100-L0

DWG NO.
SNL-009M-01-TX100-L0

REVISIONS

REV	DESCRIPTION	BY	APPR.	DATE
A	PROTOTYPE PRODUCTION LAMINATE	DSB		9/29/04


DBM-1708
(MAT UP)

MOLD

DBM-1708
(MAT UP)

STEP 2 / LAYER 2:

- APPLY DBM-1708 TO THE ENTIRE MOLD SURFACE
- THE 1708 SHOULD BE PLACED MAT UP

1	46262	GLASS, BIAXIAL, DBM-1708	(LB)	4
NO.	PART NO.	DESCRIPTION		QTY
PARTS LIST				
 COMPOSITES INC. RT. 136 MARKET ST. WARREN, R.I. 02885-0328 TEL. (401) 245-1200 FAX (401) 245-3160		PROJECT TX-100		
TITLE SHEAR WEB LAMINATE SCHEDULE		SNL-009M-01-TX100-L0		
.X ±10	.XX ±10	.XXX ±10	ANGLES ±5°	UNLESS OTHERWISE SPECIFIED: MACHINED SURFACE FINISHES 125/✓ MACHINED FILLET RADII .015-.030
ALL DIMENSIONS IN mm				THIRD ANGLE
THIS DOCUMENT IS THE PROPERTY OF T.P.I. AND IS NOT TO BE USED OR REPRODUCED IN WHOLE OR IN PART WITHOUT WRITTEN PERMISSION.				
SIZE A		DWG NO. SNL-009M-01-TX100-L0		REV A
TPI PART #: TX100		DR BY: DSB	CHKD BY:	APP'D BY:
FILE: Lam_TX100_SW		DATE: 9/29/04	SCALE: NONE	SHT: 1 OF 1

DWG NO.
SNL-009M-01-TX100-L0

REVISIONS

REV	DESCRIPTION	BY	APPR.	DATE
A	PROTOTYPE PRODUCTION LAMINATE	DSB		9/29/04


3/8" BALSA

MOLD

3/8" BALSA

STEP 3 / LAYER 3:

- APPLY 3/8" BLASA TO THE WEB (NOT THE FLANGES) AS SHOWN ABOVE

1	47057	BALSA, 3/8", CK-100, AL-600	(SF)	15		
NO.	PART NO.	DESCRIPTION	QTY			
PARTS LIST						
 COMPOSITES INC. RT. 136 MARKET ST. WARREN, R.I. 02885-0328 TEL. (401) 245-1200 FAX (401) 245-3160		PROJECT TX-100		SNL-009M-01-TX100-L0 DWG NO.		
UNLESS OTHERWISE SPECIFIED: MACHINED SURFACE FINISHES 125/ MACHINED FILLET RADII .015-.030		TITLE SHEAR WEB LAMINATE SCHEDULE				
ALL DIMENSIONS IN mm		SIZE DWG NO. A SNL-009M-01-TX100-L0				
THIRD ANGLE		REV A				
THIS DOCUMENT IS THE PROPERTY OF T.P.I. AND IS NOT TO BE USED OR REPRODUCED IN WHOLE OR IN PART WITHOUT WRITTEN PERMISSION.		TPI PART #: TX100		DR BY: DSB	CHK'D BY:	APP'D BY:
		FILE: Lam_TX100_SW		DATE: 9/29/04	SCALE: NONE	SHT: 1 OF 1

DWG NO.
SNL-009M-01-TX100-L0

REVISIONS

REV	DESCRIPTION	BY	APPR.	DATE
A	PROTOTYPE PRODUCTION LAMINATE	DSB		9/29/04


DBM-1708
(MAT DOWN)

MOLD

DBM-1708
(MAT DOWN)

STEP 4 / LAYER 4:

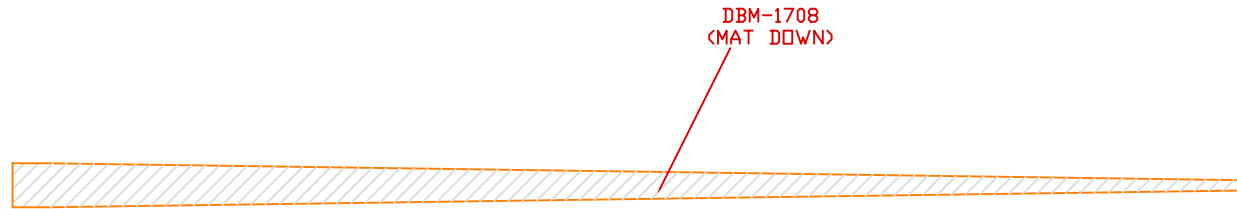
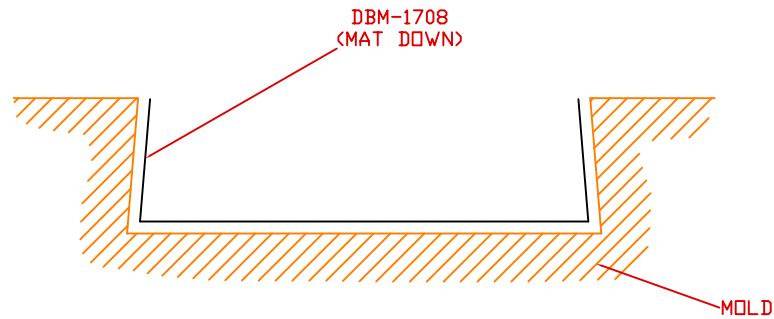
- APPLY DBM-1708 TO THE ENTIRE MOLD SURFACE
- THE 1708 SHOULD BE PLACED MAT DOWN

1	46262	GLASS, BIAXIAL, DBM-1708	(LB)	4
NO.	PART NO.	DESCRIPTION	QTY	
PARTS LIST				
 COMPOSITES INC. RT. 136 MARKET ST. WARREN, R.I. 02885-0328 TEL. (401) 245-1200 FAX (401) 245-3160		PROJECT TX-100		
.X .XX .XXX ANGLES ±10 ±10 ±10 ±5°		TITLE SHEAR WEB LAMINATE SCHEDULE		
ALL DIMENSIONS IN mm		SIZE DWG NO. A SNL-009M-01-TX100-L0		
UNLESS OTHERWISE SPECIFIED: MACHINED SURFACE FINISHES 125✓ MACHINED FILLET RADII .015-.030		REV A		
THIRD ANGLE		TPI PART #: TX100		
THIS DOCUMENT IS THE PROPERTY OF T.P.I. AND IS NOT TO BE USED OR REPRODUCED IN WHOLE OR IN PART WITHOUT WRITTEN PERMISSION.		DR BY: DSB		
		FILE: Lam_TX100_SW		
		DATE: 9/29/04		
		SCALE: NONE		
		SHT: 1 OF 1		

DWG NO.
SNL-009M-01-TX100-L0


DWG NO.
SNL-009M-01-TX100-L0

REVISIONS				
REV	DESCRIPTION	BY	APPR.	DATE
A	PROTOTYPE PRODUCTION LAMINATE	DSB		9/29/04



STEP 5 / LAYER 5:

- APPLY DBM-1708 TO THE ENTIRE MOLD SURFACE
- THE 1708 SHOULD BE PLACED MAT DOWN

1	46262	GLASS, BIAxIAL, DBM-1708	(LB)	4
NO.	PART NO.	DESCRIPTION	QTY	
PARTS LIST				
 COMPOSITES INC. RT. 136 MARKET ST. WARREN, R.I. 02885-0328 TEL. (401) 245-1200 FAX (401) 245-3160		PROJECT TX-100		
TITLE SHEAR WEB LAMINATE SCHEDULE		DWG NO. SNL-009M-01-TX100-L0		
SIZE A		REV A		
TPI PART #: TX100		DR BY: DSB	CHK'D BY:	APP'D BY:
FILE: Lam_TX100_SW		DATE: 9/29/04	SCALE: NONE	SHT: 1 OF 1

THIS DOCUMENT IS THE PROPERTY OF T.P.I. AND IS NOT TO BE USED OR REPRODUCED IN WHOLE OR IN PART WITHOUT WRITTEN PERMISSION.