

Visual

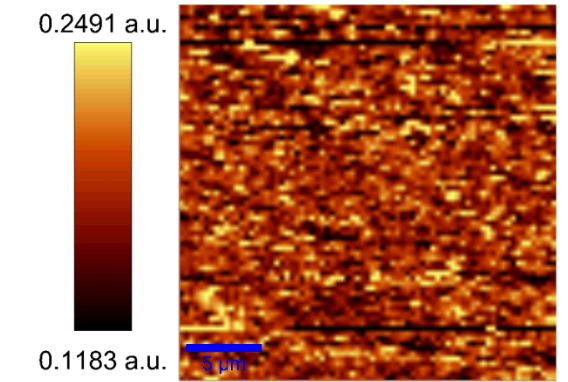
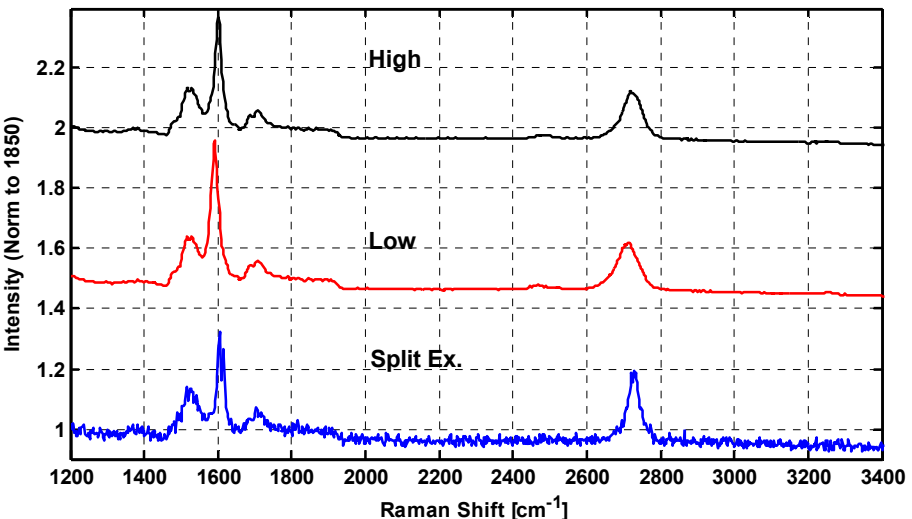
2D-Area

2D-Center

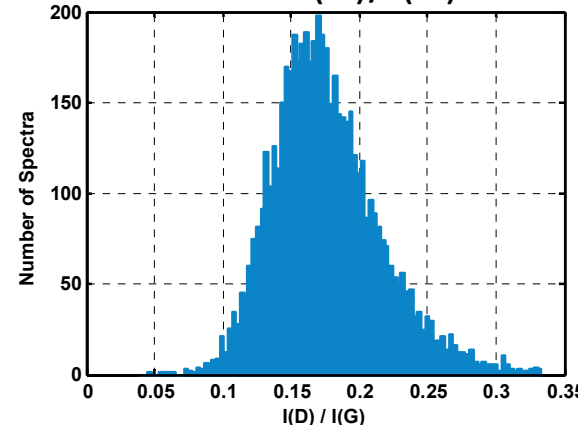
2D-Width

• **Summary:**

- This is a 4H-SiC sample
 - Keep an eye on broad feature around 1000
- I(D)/I(G) is negligible everywhere.

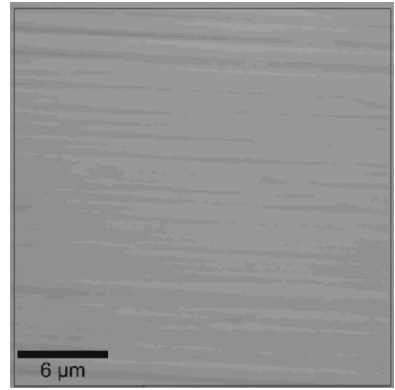


I(D)/I(G)

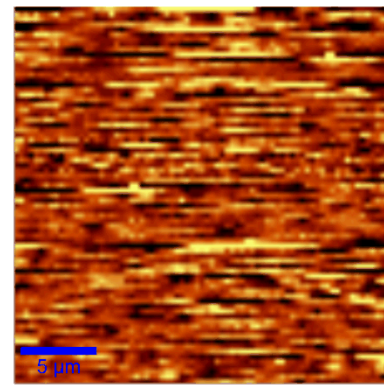


N120523#3 H1(1350)/N/-HA1(1450) – H1(800)/2ML/ Miscut SiC(0001) -25x25 micron

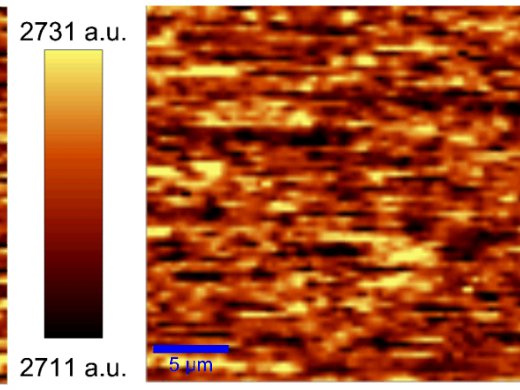
AFTER INTERCALATION



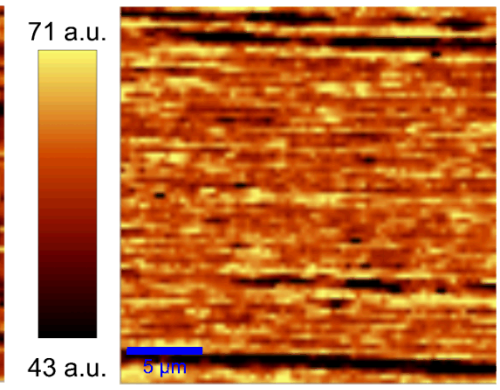
Visual



2D-Area



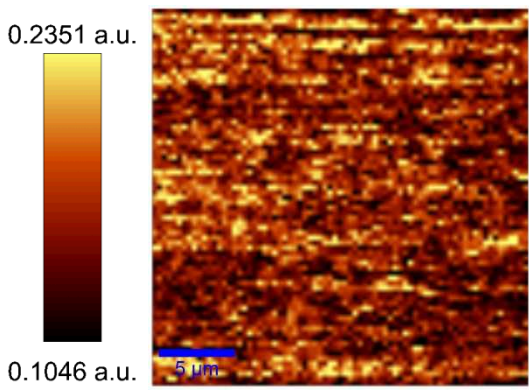
2D-Center



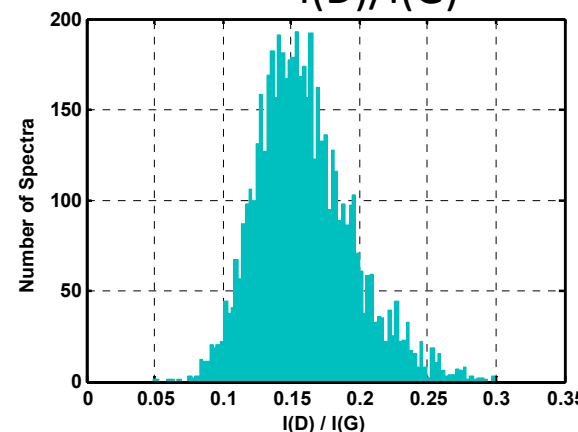
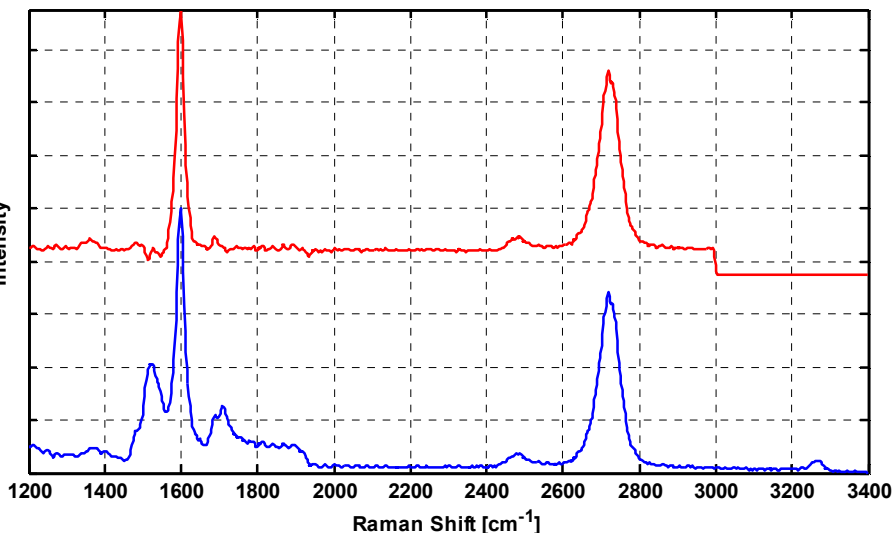
2D-Width

• **Summary:**

- This is a repeat measurement of 08/01/2012. We are looking for repeatability.
- I(D)/I(G) is negligible everywhere.



I(D)/I(G)



"Sandia National Laboratories is a multi-program laboratory managed and operated by Sandia Corporation, a wholly owned subsidiary of Lockheed Martin Corporation, for the U.S. Department of Energy's National Nuclear Security Administration under contract DE-AC04-94AL85000."



**Sandia
National
Laboratories**



U.S. DEPARTMENT OF
ENERGY