

LA-UR-20-25599

Approved for public release; distribution is unlimited.

Title: Nuclear Security Enterprise (NSE)

Author(s): Scarlett, Harry Alan

Intended for: Nuclear Fundamentals Orientation (NFO)

Issued: 2021-10-21 (rev.2)

Disclaimer:

Los Alamos National Laboratory, an affirmative action/equal opportunity employer, is operated by Triad National Security, LLC for the National Nuclear Security Administration of U.S. Department of Energy under contract 89233218CNA000001. By approving this article, the publisher recognizes that the U.S. Government retains nonexclusive, royalty-free license to publish or reproduce the published form of this contribution, or to allow others to do so, for U.S. Government purposes. Los Alamos National Laboratory requests that the publisher identify this article as work performed under the auspices of the U.S. Department of Energy. Los Alamos National Laboratory strongly supports academic freedom and a researcher's right to publish; as an institution, however, the Laboratory does not endorse the viewpoint of a publication or guarantee its technical correctness.



Nuclear Fundamentals Orientation Module 1

Nuclear Security Enterprise (NSE)



Managed by Triad National Security, LLC for the U.S. Department of Energy's NNSA

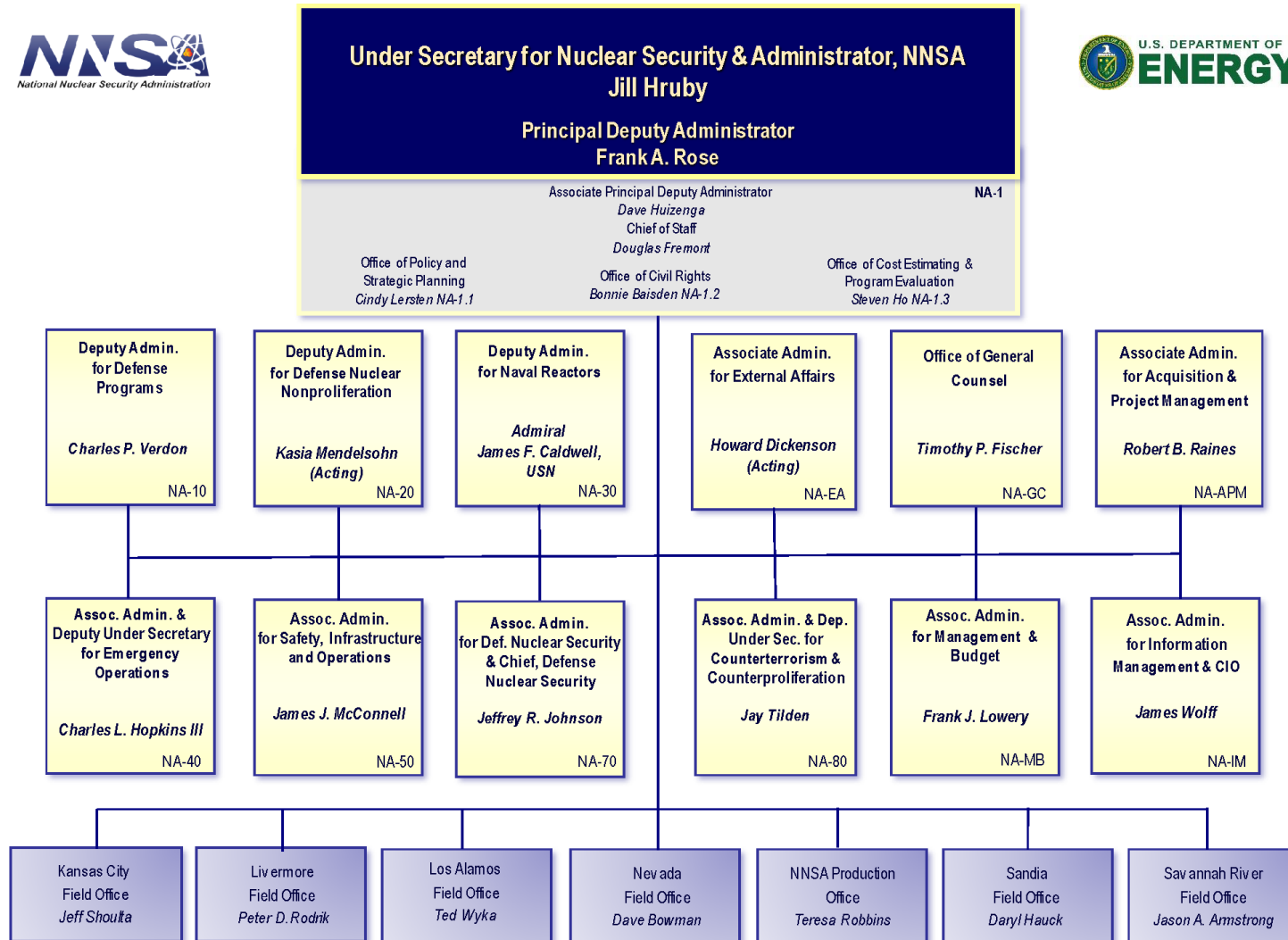
Nuclear Security Enterprise



Presentation Overview:

- Current NSE
 - NNSA
 - Design Labs
 - Los Alamos, Livermore, Sandia
 - Production Plants
 - Y-12, Pantex, KC, SR, Los Alamos
 - Complex Challenges
 - Future Vision
- Questions and Answers

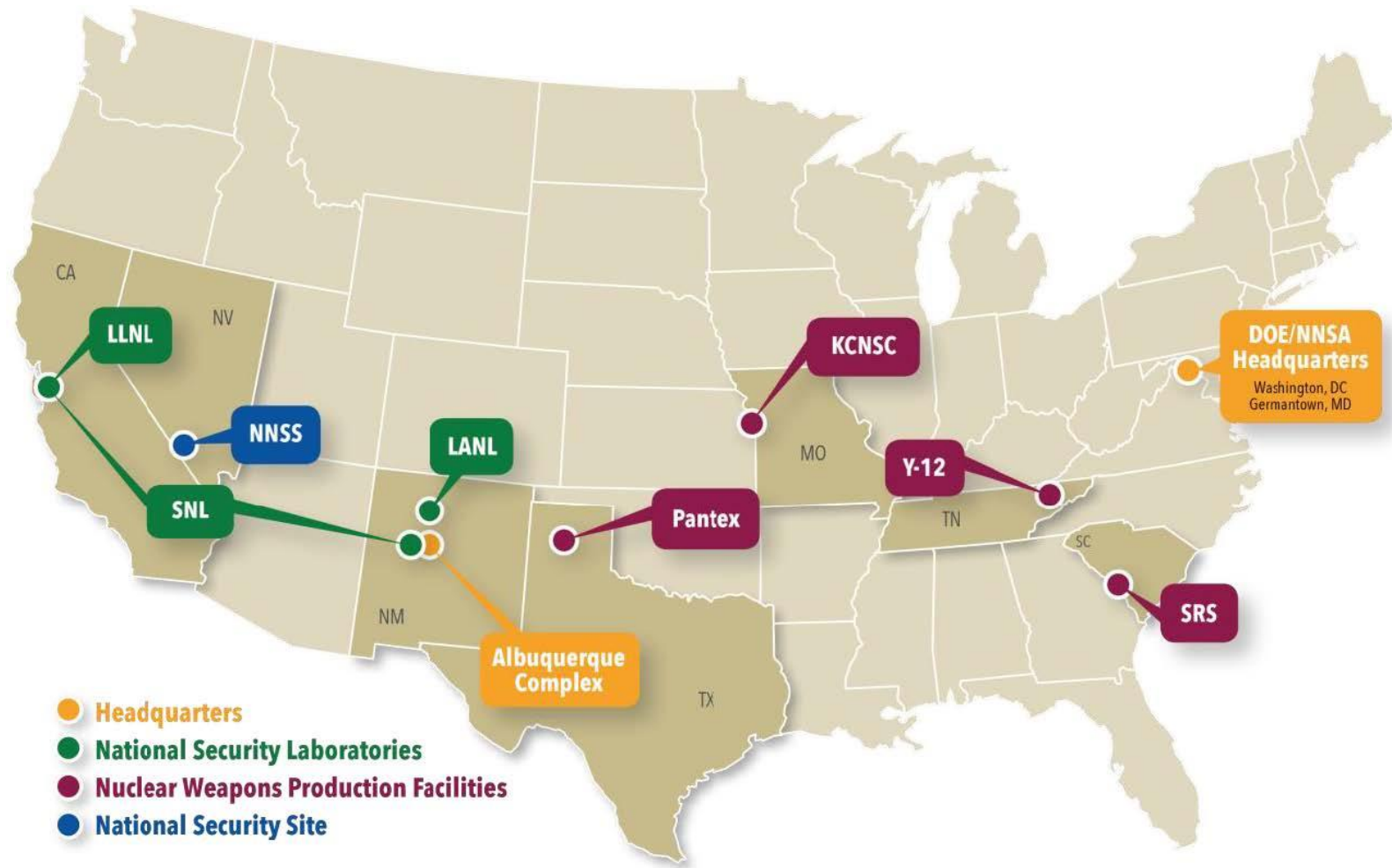
Today: NNSA and DOE



August 2021



Today: Current Complex



KCNSC = Kansas City National Security Campus
LANL = Los Alamos National Laboratory
LLNL = Lawrence Livermore National Laboratory

NNSS = Nevada National Security Site
Pantex = Pantex Plant
SNL = Sandia National Laboratories

SRS = Savannah River Site
Y-12 = Y-12 National Security Complex

Today: NSE Complex

Los Alamos
National Laboratory



Lawrence Livermore
National Laboratory



Sandia National
Laboratories



Kansas City National
Security Campus



Federal government (DOE/NNSA), with input from labs and plants, provides scope & budgets to these organizations every year, creating an environment of cooperation and competition

Y-12 National
Security Complex



Savannah
River Site



Pantex
Plant



Nevada National
Security Site



Today: Design Agency and Production Agency

DESIGN

LANL

LLNL

SNL

PRODUCTION

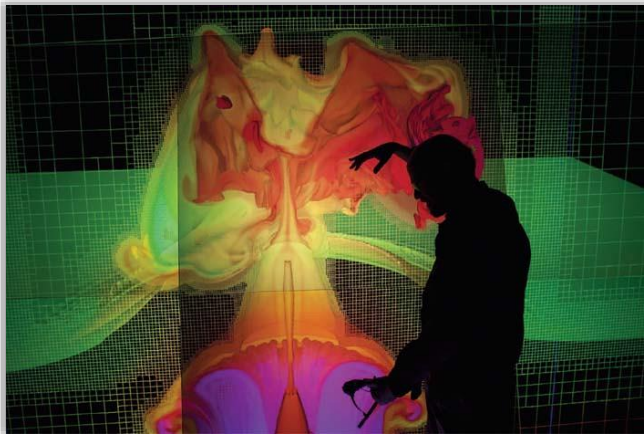
LANL

KCNSC

SRS

Y-12

Pantex



Lawrence Livermore National Laboratory (LLNL)



- Livermore, California
- Multi-Program National Security Laboratory
- Design Agency for NEP
- Surveillance
- Home of NIF



Sandia National Laboratories (SNL)

- Albuquerque, NM
- Design Agency for non-nuclear components
- Production Agency for neutron generators and electronics fab
- Integration



Y-12

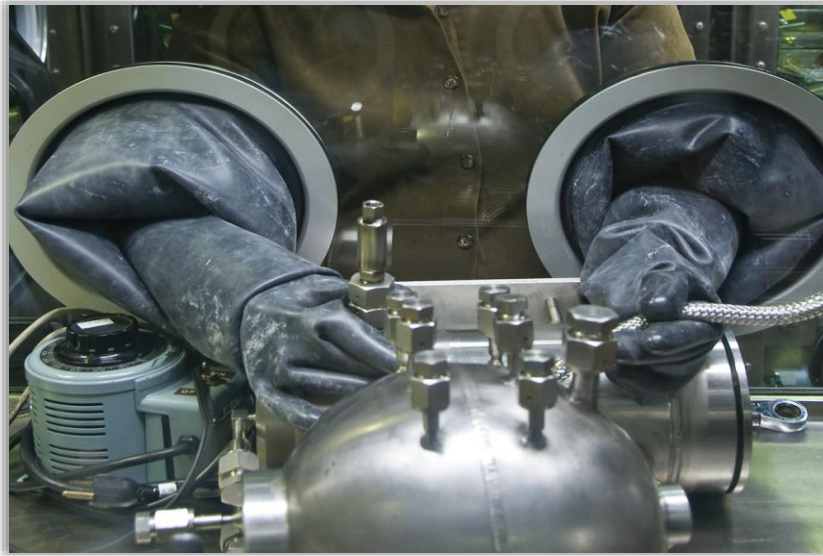


- Oak Ridge, TN
- Uranium & other components

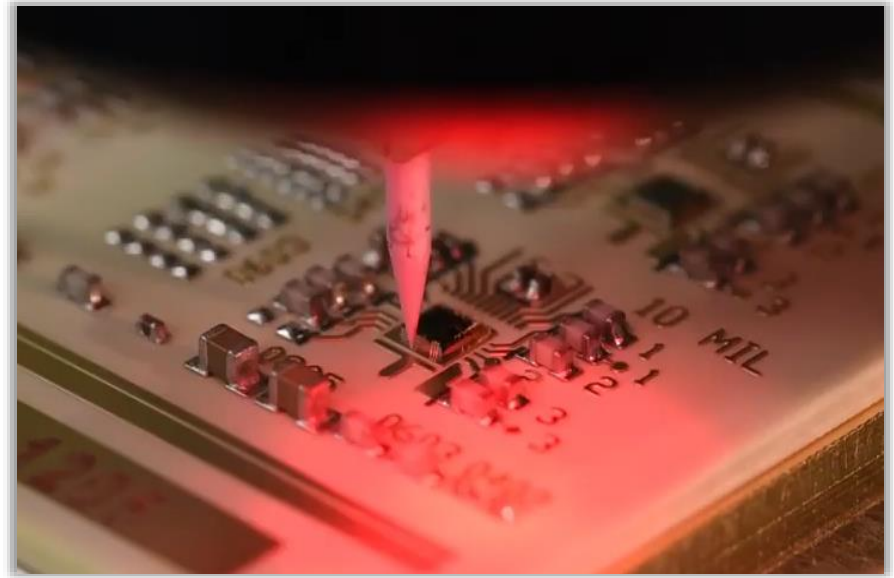


Savannah River Site (SRS)

- Tritium & gas-transfer systems
- Future pit production mission, together with Los Alamos



Kansas City National Security Campus (KCNSC)



- Kansas City, MO
- Production Agency for non-nuclear components

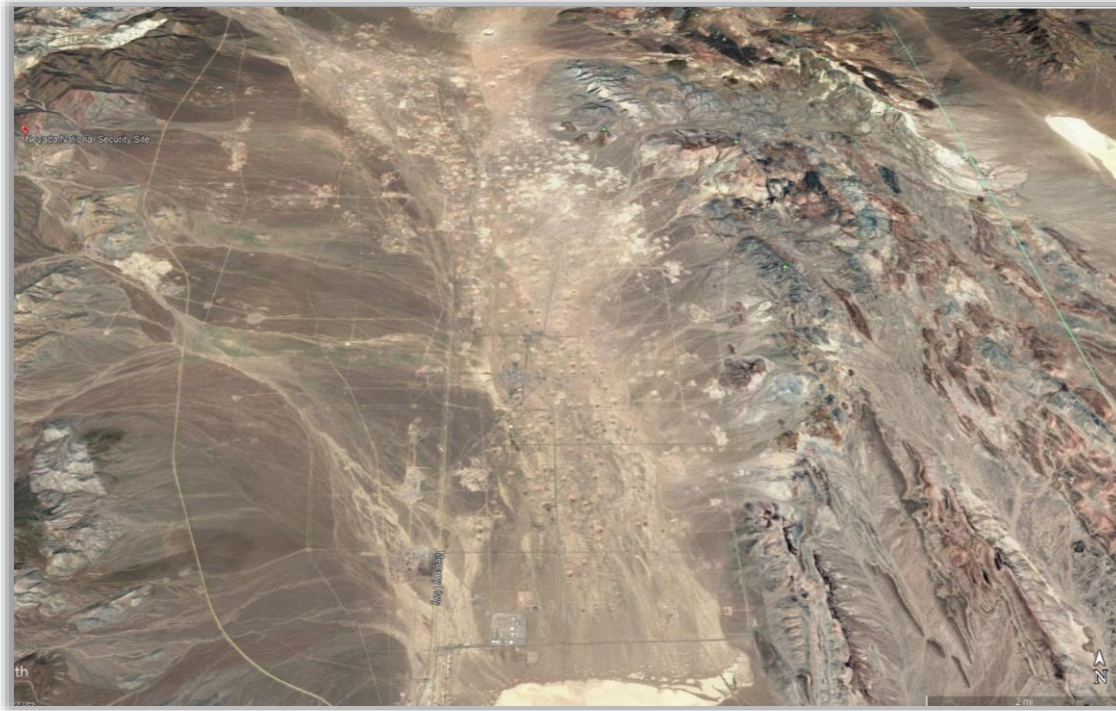
Pantex

- Amarillo, TX
- Weapons Production
- Stockpile Surveillance
- High Explosive Manufacturing



Nevada National Security Site (NNSS)

- Integrated subcritical plutonium experiments
- High-hazard work
- “Exercises” involving counter-terrorism



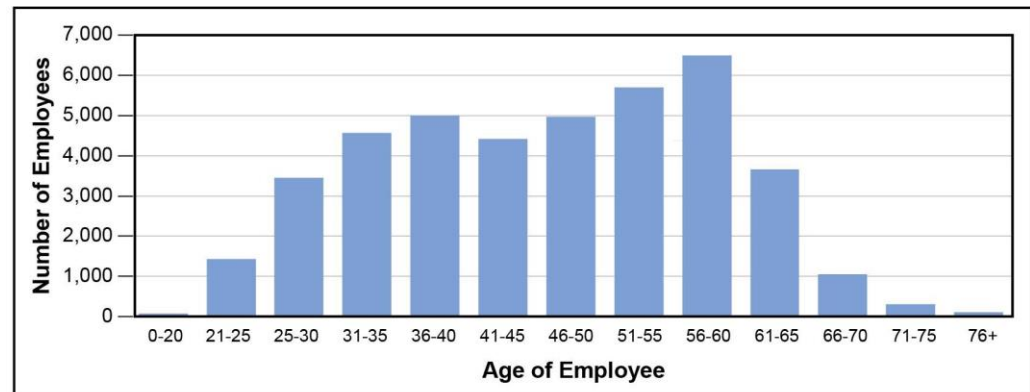
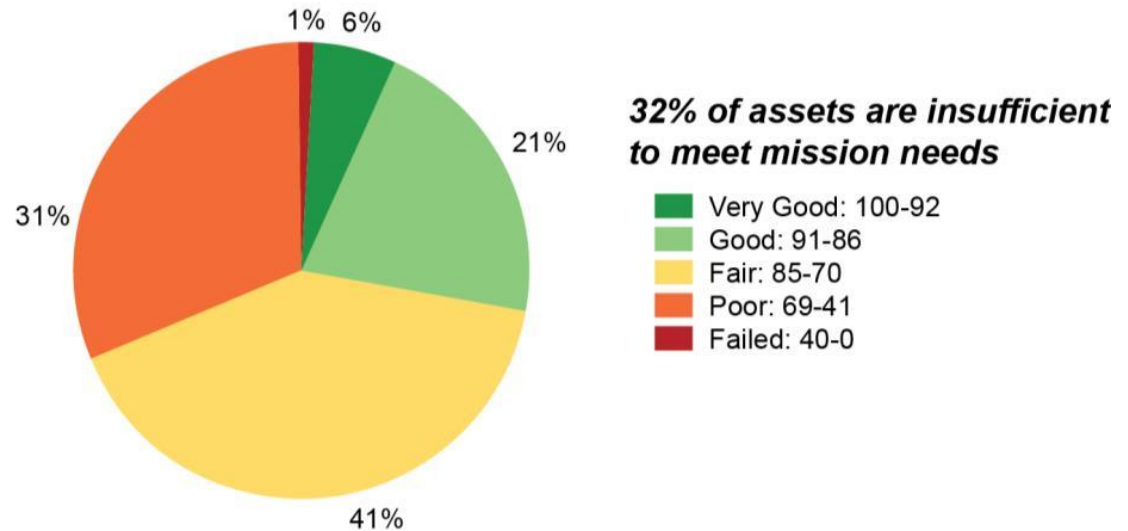
Los Alamos National Laboratory (LANL)

- Los Alamos, NM
- Multi-Program National Security Laboratory
- Design Agency for NEP
- Surveillance
- Home of LANSCE, DARHT, PF4, ...
- Production Agency for pits detonators and power sources



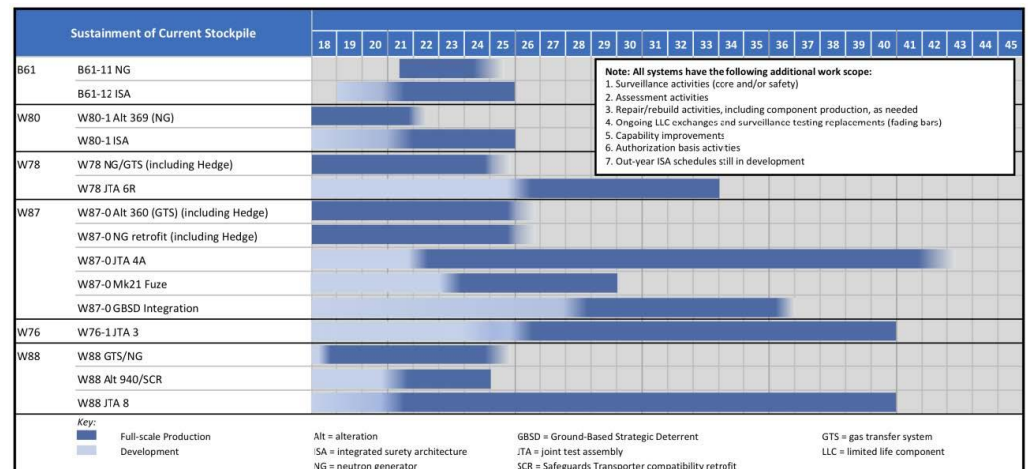
Today: Complex Challenges

- Workforce
- Aging Infrastructure
- New Facilities
- Modernization of Stockpile
- Threat Spectrum Changing
- Waste Management



Future: Vision

- Maintain momentum in workforce, resources
- Have a responsive, agile infrastructure to steward the stockpile
- Should the need arise, design the systems of tomorrow



Who are we Supporting?



Additional Readings

■ History

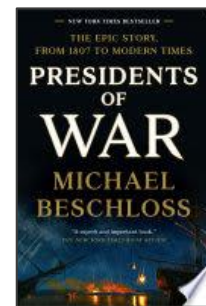
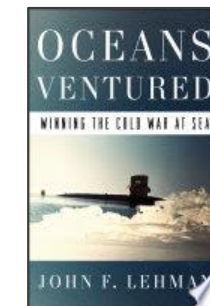
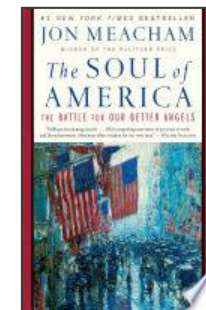
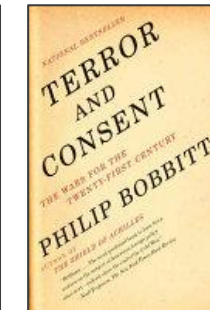
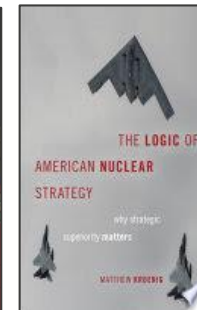
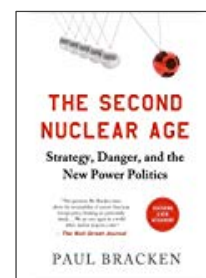
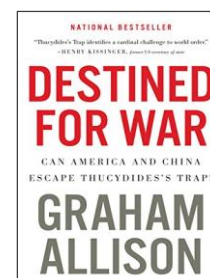
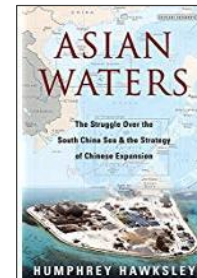
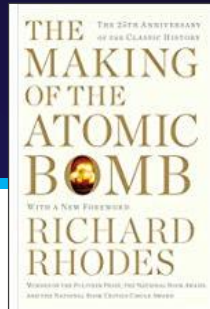
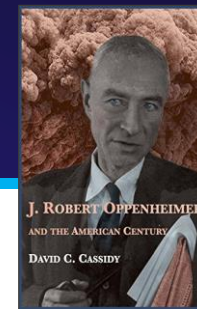
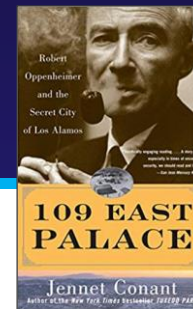
- 109 East Palace: Robert Oppenheimer and the Secret City of Los Alamos, **Jennet Conant**
- J. Robert Oppenheimer and the American Century, **David Cassidy**
- The Making of the Atomic Bomb & Dark Sun, **Richard Rhodes**
- The Last Man Who Knew Everything: The Life and Times of Enrico Fermi, Father of the Nuclear Age, **David Schwartz**
- The Soul of America, the Battle for our Better Angels, **John Meacham**
- Presidents of War, **Michael Beschloss**
- Oceans Ventured: Winning the Cold War At Sea, **John Lehman**

■ Federal Policy Documents

- The Nuclear Posture Review
- Worldwide Threat Assessment

■ Current Events

- Asian Waters: The Struggle Over the South China Sea and the Strategy of Chinese Expansion, **Humphrey Hawksley**
- Destined for War: Can America and China Escape Thucydides' Trap? **Graham Allison**
- The Second Nuclear Age: Strategy, Danger and the New Power Politics, **Paul Bracken**
- No Better Friend, No Worse Enemy: The Life of General James Mattis, **Jim Proser**
- The Logic of American Nuclear Strategy, **Matt Kroenig**
- Terror and Consent, The Wars for the 21st Century, **Philip Bobbitt**



Thank you!

Questions?



Email us: NFO@lanl.gov