

Thunderbird UI

Redesigning the internal web of Sandia National Laboratories



PRESENTED BY

Ben Brown
blbrown@sandia.gov

Mallory Stites
mcstite@sandia.gov



Sandia National Laboratories is a multimission laboratory managed and operated by National Technology & Engineering Solutions of Sandia, LLC, a wholly owned subsidiary of Honeywell International Inc., for the U.S. Department of Energy's National Nuclear Security Administration under contract DE-NA0003525.



Introduction

What is Thunderbird UI and why did we do it?

What is Thunderbird UI?

- Thunderbird UI (TUI) is a **Design System**

What is a design system?

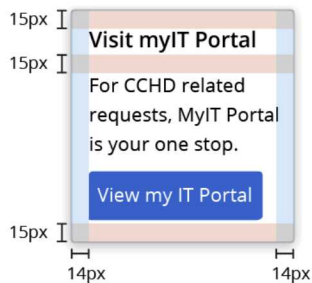
- Style guide
- Common look and feel
- UI requirements
- Accessibility requirements
- Reusable interface components
- Common set of assets
- Color palette(s)
- Page templates

Thunderbird UI examples

Button Toolbar

When you have a primary action that you would like to position next to a button group, use a button toolbar to separate the primary button from the secondary button group set. You can also use the `mr-2` class to add a right margin to the primary button.

Card



```
<div class="btn-toolbar">
  <div class="btn-group mr-2" role="group" aria-label="Basic example">
    <button type="button" class="btn btn-primary">Save</button>
  </div>

  <div class="btn-group" role="group" aria-label="Basic example">
    <button type="button" class="btn btn-outline-primary">Day</button>
    <button type="button" class="btn btn-outline-primary">Month</button>
    <button type="button" class="btn btn-outline-primary">Year</button>
  </div>
</div>
```

Modal



Spinner states

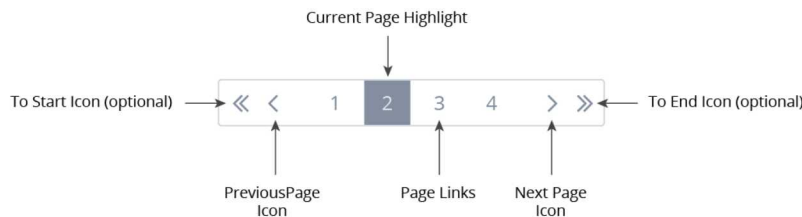
Default (V4)



Colors

Foreground: snl-blue-500
Background: snl-blue-400, 40%

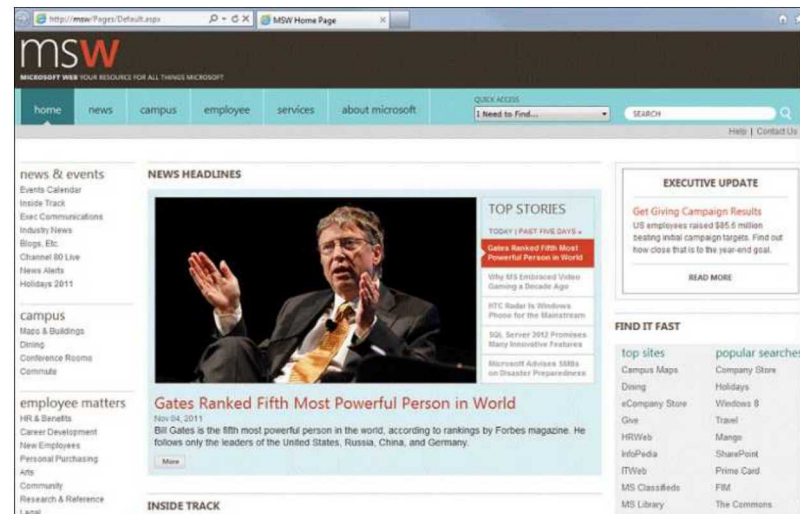
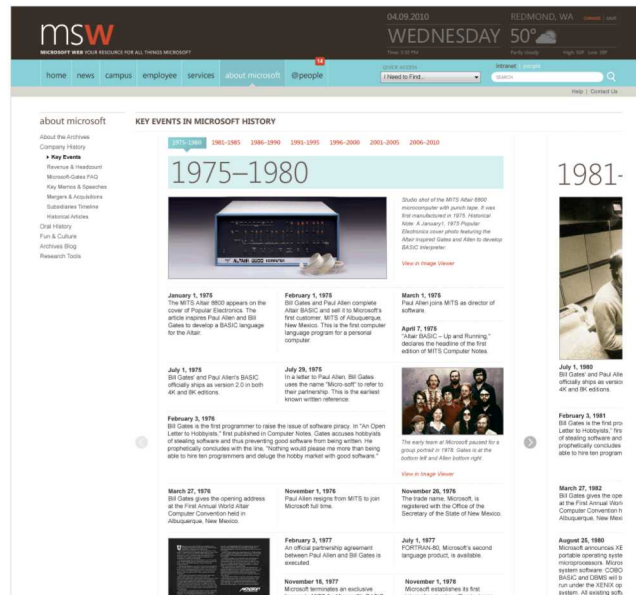
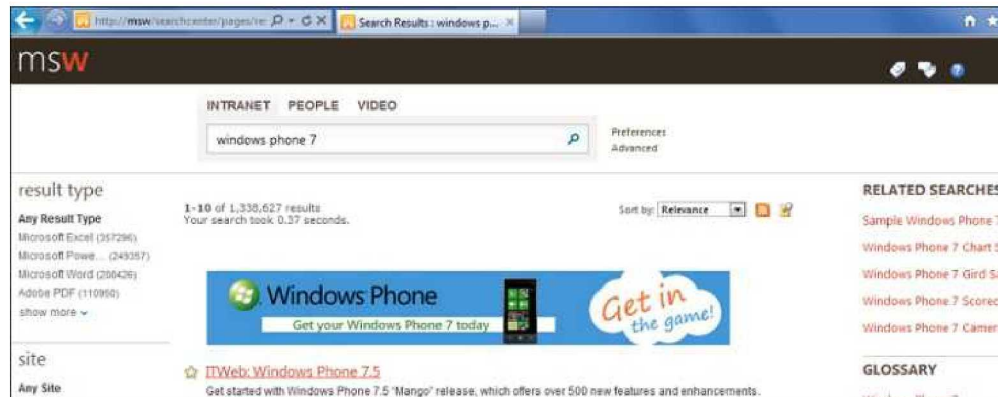
snl-light-blue	snl-light-blue-900 #00a0d0 rgb(0, 160, 208)	snl-light-blue-800 #00a0d0 rgb(0, 160, 208)	snl-light-blue-700 #00a0d0 rgb(0, 160, 208)	snl-light-blue-600 #00a0d0 rgb(0, 160, 208)	snl-light-blue-500 #00a0d0 rgb(0, 160, 208)
snl-blue	snl-blue-900 #0066cc rgb(0, 102, 204)	snl-blue-800 #0066cc rgb(0, 102, 204)	snl-blue-700 #0066cc rgb(0, 102, 204)	snl-blue-600 #0066cc rgb(0, 102, 204)	snl-blue-500 #0066cc rgb(0, 102, 204)
snl-teal	snl-teal-900 #008074 rgb(0, 128, 116)	snl-teal-800 #008074 rgb(0, 128, 116)	snl-teal-700 #008074 rgb(0, 128, 116)	snl-teal-600 #008074 rgb(0, 128, 116)	snl-teal-500 #008074 rgb(0, 128, 116)
snl-purple	snl-purple-900 #6a32cf rgb(106, 50, 206)	snl-purple-800 #6a32cf rgb(106, 50, 206)	snl-purple-700 #6a32cf rgb(106, 50, 206)	snl-purple-600 #6a32cf rgb(106, 50, 206)	snl-purple-500 #6a32cf rgb(106, 50, 206)
snl-lavender	snl-lavender-900 #b332b1 rgb(179, 50, 177)	snl-lavender-800 #b332b1 rgb(179, 50, 177)	snl-lavender-700 #b332b1 rgb(179, 50, 177)	snl-lavender-600 #b332b1 rgb(179, 50, 177)	snl-lavender-500 #b332b1 rgb(179, 50, 177)
snl-green	snl-green-900 #00a080 rgb(0, 160, 128)	snl-green-800 #00a080 rgb(0, 160, 128)	snl-green-700 #00a080 rgb(0, 160, 128)	snl-green-600 #00a080 rgb(0, 160, 128)	snl-green-500 #00a080 rgb(0, 160, 128)
snl-crimson	snl-crimson-900 #800000 rgb(128, 0, 0)	snl-crimson-800 #800000 rgb(128, 0, 0)	snl-crimson-700 #800000 rgb(128, 0, 0)	snl-crimson-600 #800000 rgb(128, 0, 0)	snl-crimson-500 #800000 rgb(128, 0, 0)
snl-red	snl-red-900 #c00000 rgb(192, 0, 0)	snl-red-800 #c00000 rgb(192, 0, 0)	snl-red-700 #c00000 rgb(192, 0, 0)	snl-red-600 #c00000 rgb(192, 0, 0)	snl-red-500 #c00000 rgb(192, 0, 0)
snl-red-orange	snl-red-orange-900 #e00000 rgb(224, 0, 0)	snl-red-orange-800 #e00000 rgb(224, 0, 0)	snl-red-orange-700 #e00000 rgb(224, 0, 0)	snl-red-orange-600 #e00000 rgb(224, 0, 0)	snl-red-orange-500 #e00000 rgb(224, 0, 0)



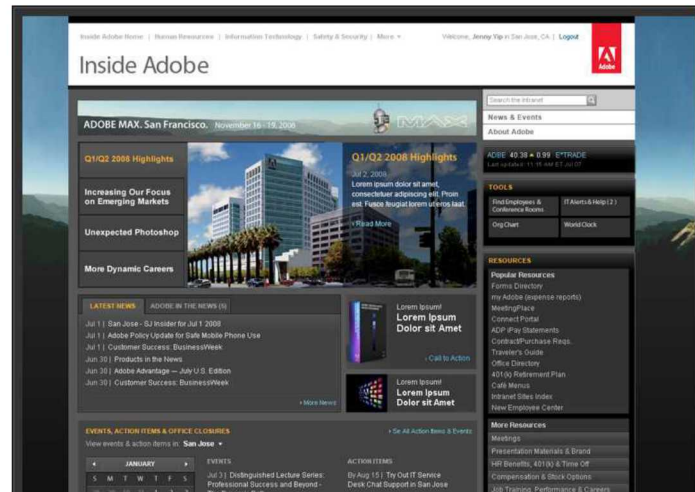
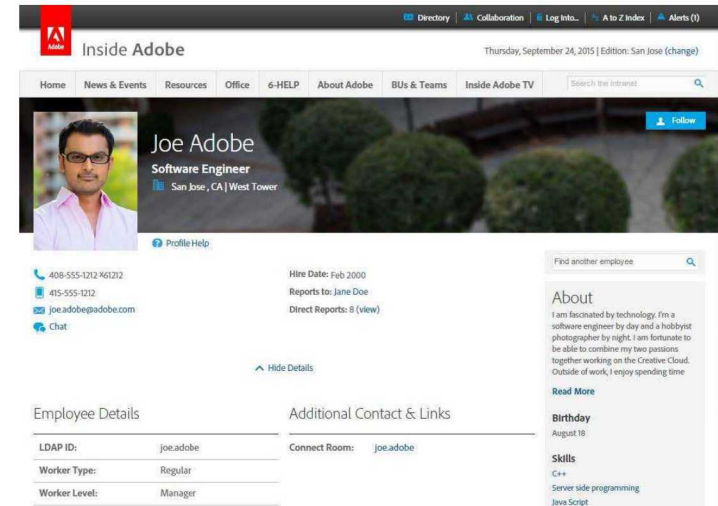
What does a design system solve?

- No cohesive look and feel to sites and apps on the internal web
 - Example: Pacman loading spinner
- Inconsistent user experience
 - Users have to relearn how to interact with each new site (productivity drain)
- Developers kept reinventing the wheel
 - How many different implementations of a date picker do we need?
- The internal web looks unprofessional
 - Unbefitting a premiere science and engineering laboratory
 - Could effect employee moral and retention

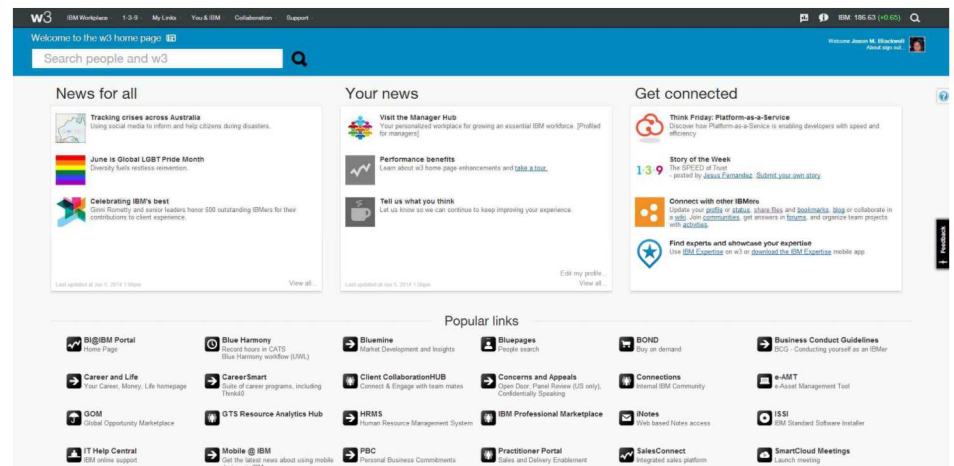
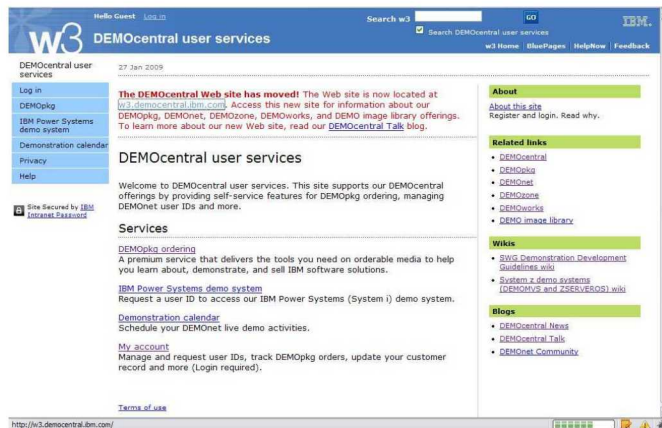
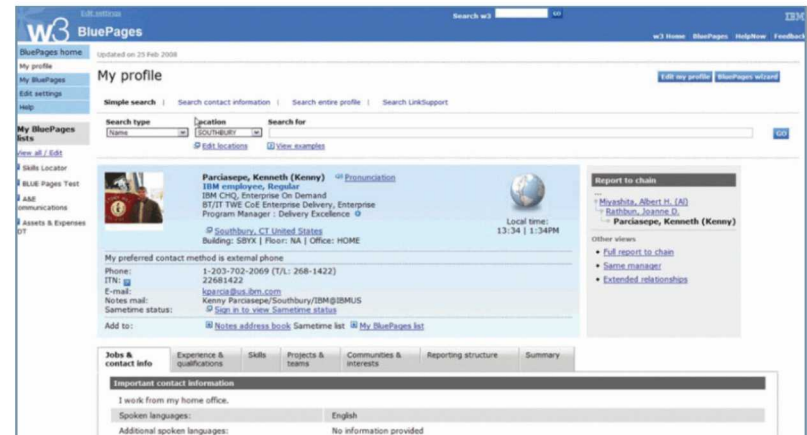
Microsoft's Intranet



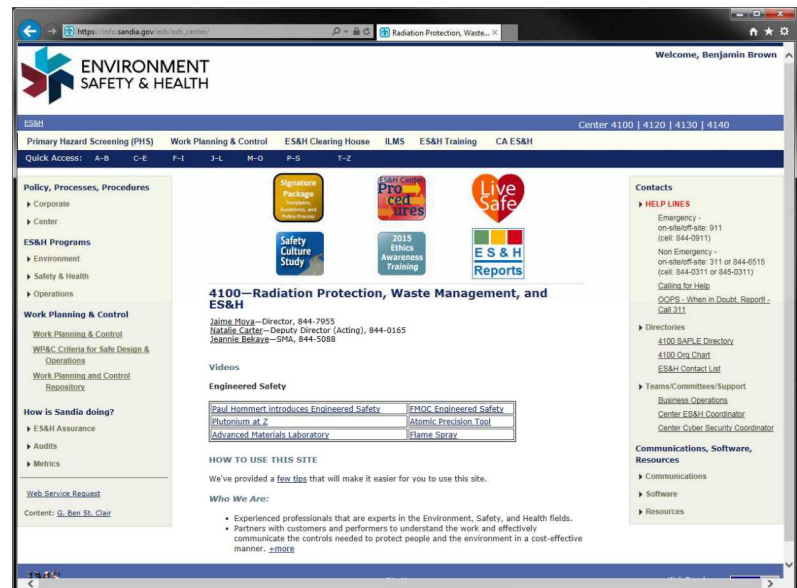
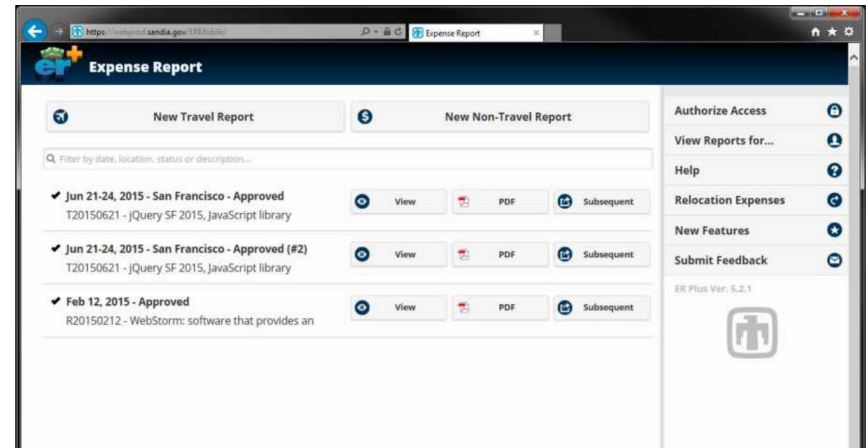
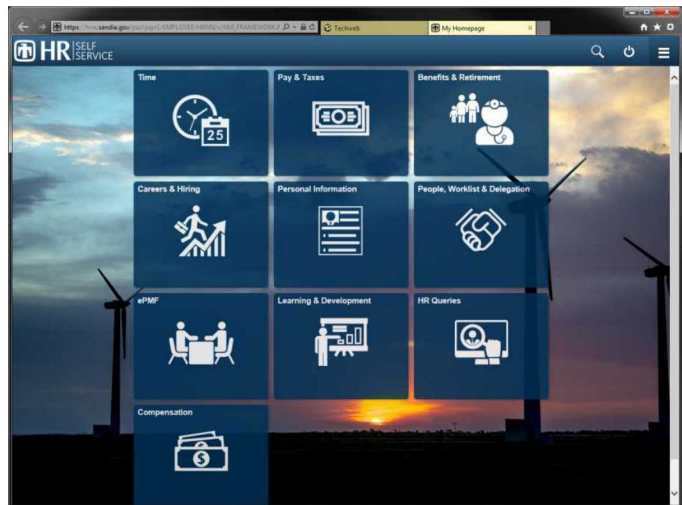
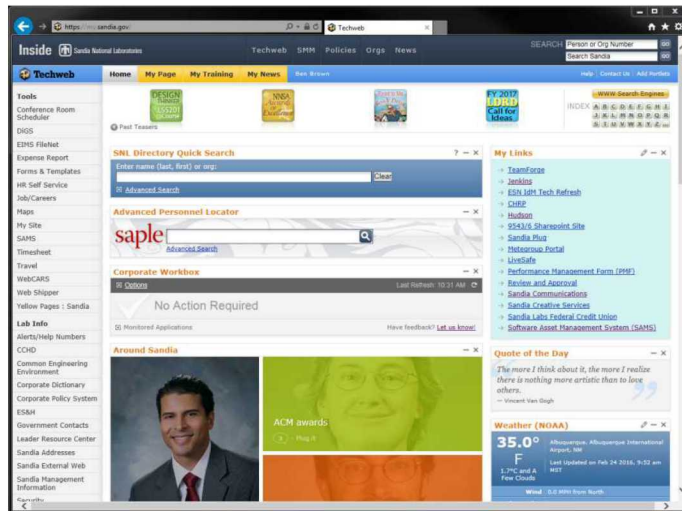
Adobe's Intranet



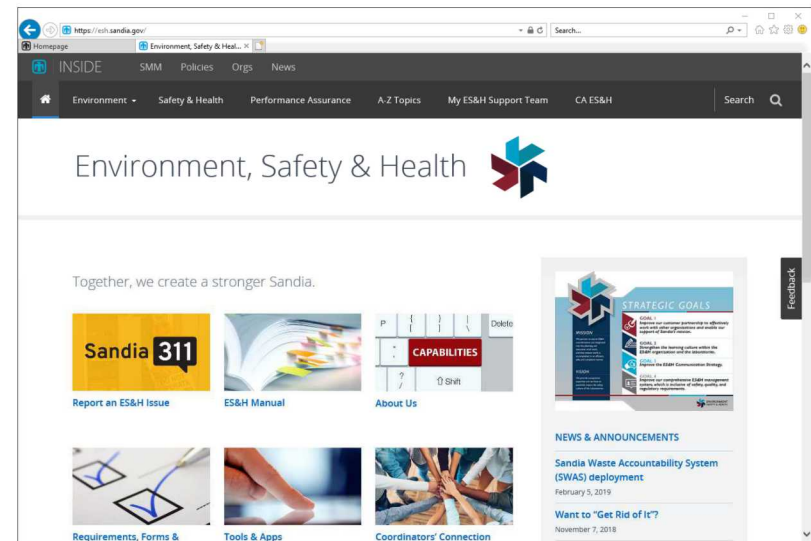
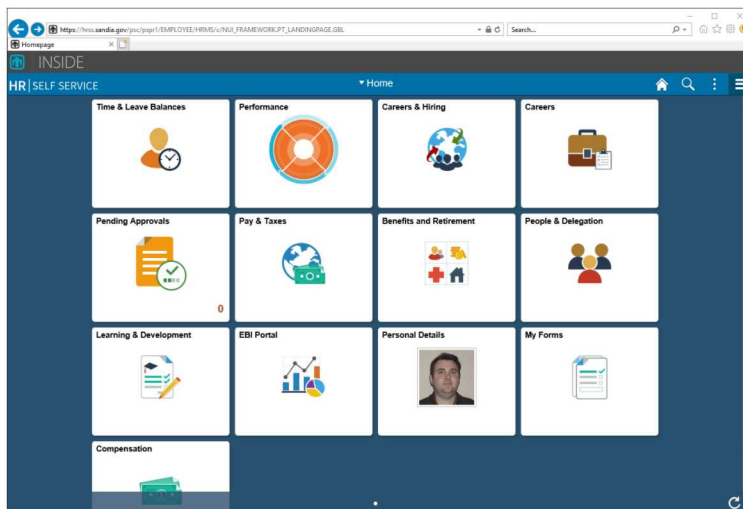
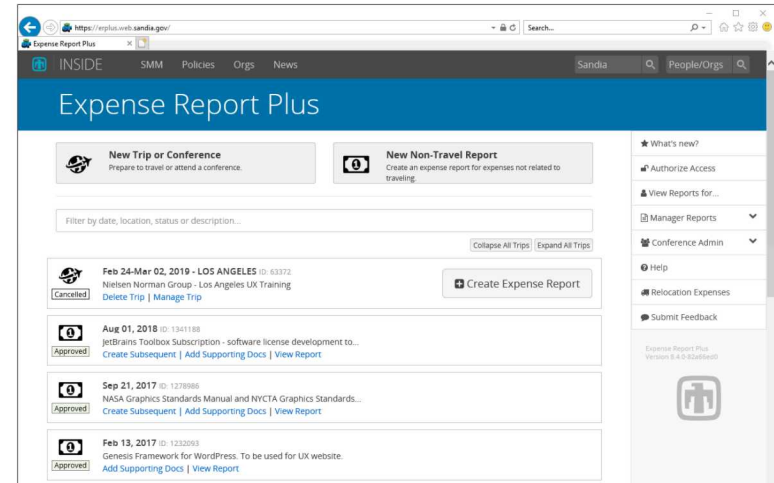
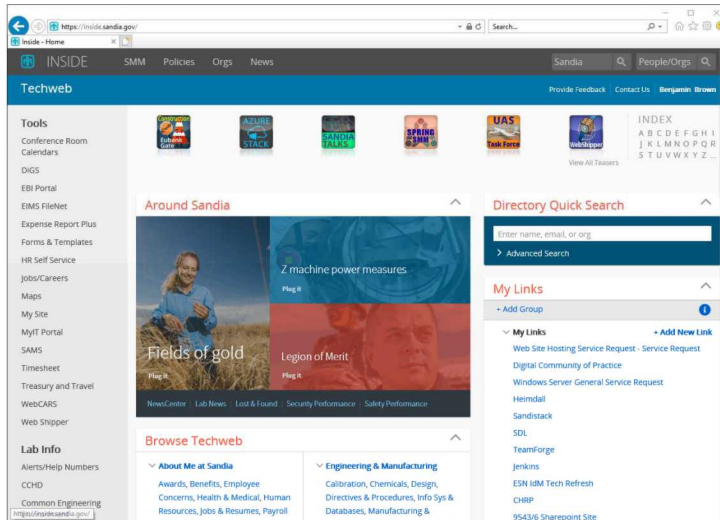
IBM's Intranet



Sandia's Intranet – Before TUI



Sandia Intranet – After TUI



Notable design systems

- United States Web Design System
- Material Design – Google
- Carbon Design System – IBM
- Global Experience Language (GEL) – BBC
- **Atomic Design – Brad Frost**
 - provides a framework for design system development
 - atoms, molecules, cells, organisms

How we went about it

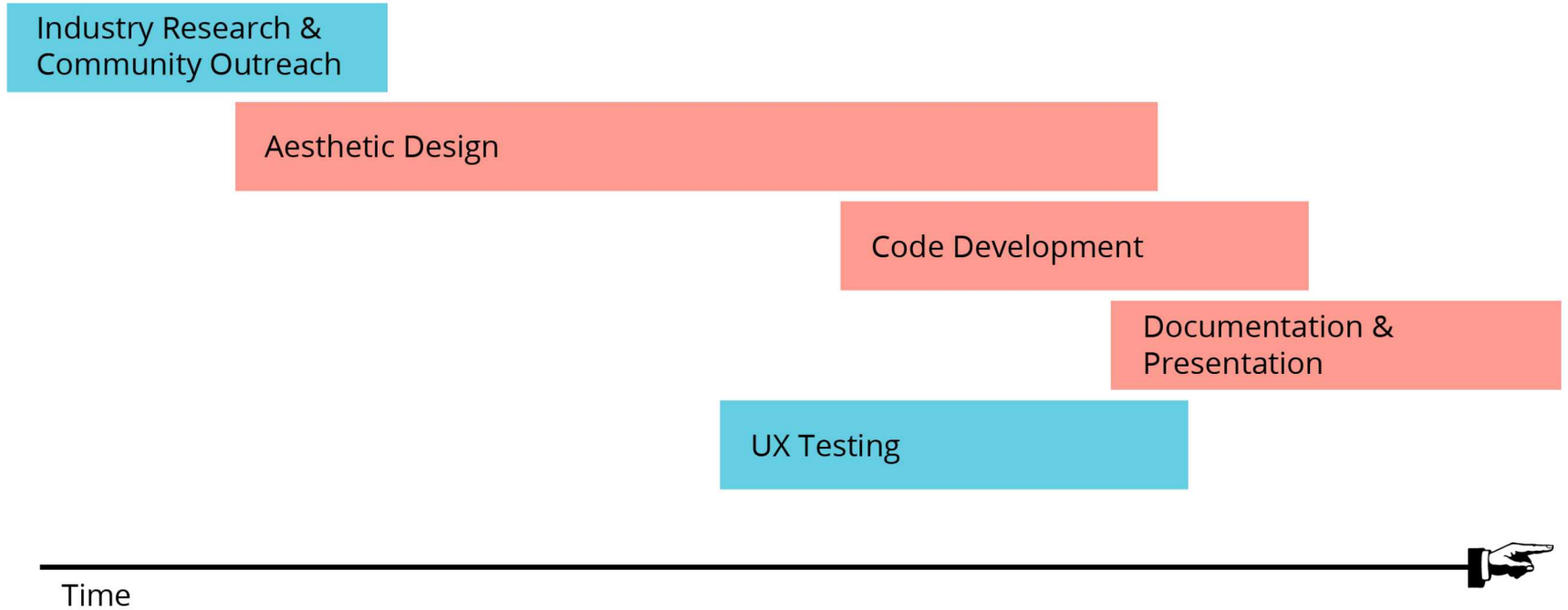
This talk will cover:

- Design and Development
- Distribution and Adoption
- Return on Investment
- Path Forward and Lessons Learned



Design and Development

Phases of development



Code Library Architecture

- Bootstrap used as a foundation for UI code library
 - established starting point
 - accessibility already built in
 - developers already familiar with how to use it
 - can integrate with many other frameworks
- Code library split into two categories
 - Foundations
 - color, typography, icons, grid, etc.
 - Components
 - buttons, tabs, modals, tables, etc.

Library Structure

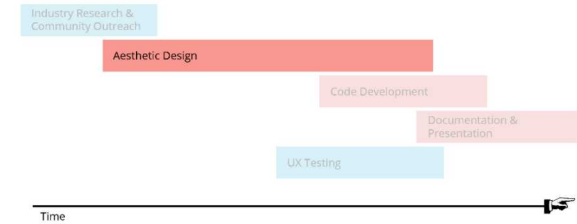
Foundations

- Accessibility
- Animation
- Borders, Shadows, and Light
- Colors
- Grid
- Icons
- Typography

Components

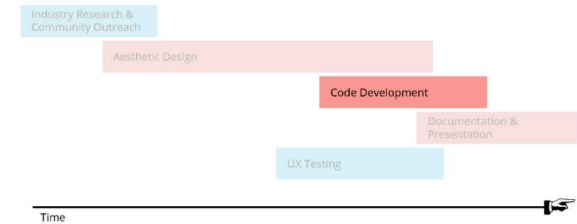
- | | | |
|--------------------|----------------------------|------------------------|
| • Accordion | • Global Header and Footer | • Secondary Navigation |
| • Alert | • Hero | • Select |
| • Badge | • In-Page Navigation | • Site Footer |
| • Breadcrumb | • Loading Notification | • Site Header |
| • Button | • Modal | • Switch |
| • Button Group | • Pagination | • Table |
| • Card | • People Picker | • Tabs and Pills |
| • Carousel | • Popover | • Text Area |
| • Checkbox | • Progress Bar | • Text Input |
| • Date/Time Picker | • Radio Button | • Toast |
| • Dropdown | • Range | • Tooltip |
| • Form Elements | • Search Box | |

Aesthetic Design



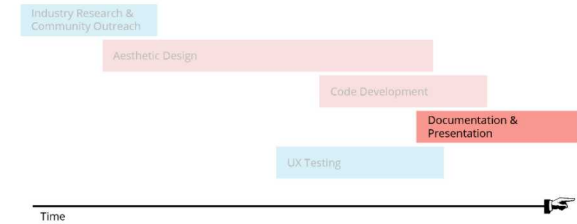
- Team of 4 to 6 designers
- Primarily focused on look and feel
- Components divided amongst designers
- Biweekly design reviews
- Designs based on Bootstrap 4 and industry best practices
- Most time-intensive (expensive) phase
 - About 6 months (not full time project)

Code Development



- Team of 3 to 4 developers
 - Subset of design team
- Components divided amongst developers
- Use Bootstrap 4 component as starting point
- Customize Bootstrap SASS variables
- Add custom SASS, JavaScript
- About 3 months

Documentation & Presentation



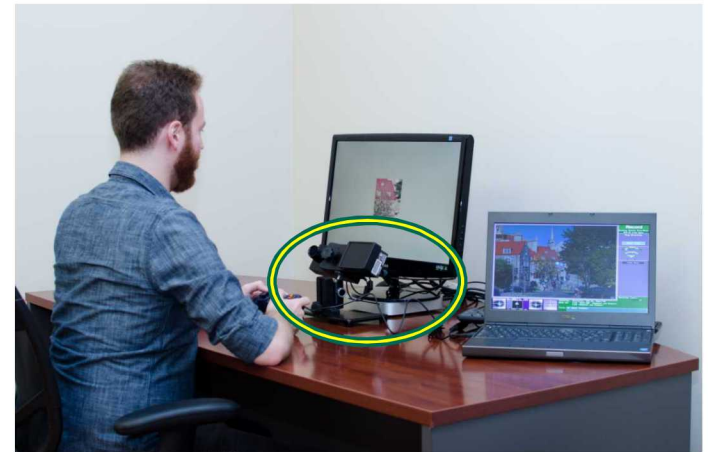
- Team of 2 to 3 writers
- Base documentation on existing UI requirements, industry design systems
- About 2 months

UX Testing and Validation

- First round with clickable prototypes
 - Testing designs, code didn't exist yet
 - Make changes to component design based on results
- Validation Study on Documentation Sections
- Eye-tracking Study on Headings
 - H1, H2, H3, etc.

Heading Study

- Question: How does heading size, weight, and spacing impact readability?
- Measures collected:
 - Comprehension
 - Eye movement data
- Design:
 - 32 passages, 3 heading levels
 - Black text, white background
 - Factors Manipulated (16 conditions)
 - Margin (small, large)
 - Scale (small, large)
 - Weight (regular, bold, light, mixed)



Heading Study Stimulus Examples

Margin 1, Scale 1, Regular Weight

Empire State Building

The Empire State Building is a 102-story Art Deco skyscraper in New York City.

Overview

As of 2017 the building is the 5th-tallest completed skyscraper in the United States.

Structural Specifications

Designed by Shreve, Lamb & Harmon and completed in 1931, its antenna, its name is derived from "Empire State", the nickname of New York.

Construction

The original design of the Empire State Building was for a 50-story building with an airplane mast on top, to ensure it would be the world's tallest building.

Modern Day

The Empire State Building has long been a popular tourist attraction.

World Records

The Empire State Building stood as the world's tallest building from 1931 until the September 11 attacks in 2001. It was again the tallest building in the world from 2001 until the completion of the One World Trade Center in 2008.

Cultural Significance

It was designated a National Historic Landmark in 1986, and was featured in more than 250 TV shows and movies since the 1930s.

Margin 1, Scale 2, Mixed Weight

Empire State Building

The Empire State Building is a 102-story Art Deco skyscraper in New York City.

Overview

As of 2017 the building is the 5th-tallest completed skyscraper in the United States.

Structural Specifications

Designed by Shreve, Lamb & Harmon and completed in 1931, its antenna, its name is derived from "Empire State", the nickname of New York.

Construction

The original design of the Empire State Building was for a 50-story building with an airplane mast on top, to ensure it would be the world's tallest building.

Modern Day

The Empire State Building has long been a popular tourist attraction.

World Records

The Empire State Building stood as the world's tallest building from 1931 until the September 11 attacks in 2001. It was again the tallest building in the world from 2001 until the completion of the One World Trade Center in 2008.

Cultural Significance

It was designated a National Historic Landmark in 1986, and was featured in more than 250 TV shows and movies since the 1930s.

Margin 2, Scale 1, Bold Weight

Empire State Building

The Empire State Building is a 102-story Art Deco skyscraper in New York City.

Overview

As of 2017 the building is the 5th-tallest completed skyscraper in the United States.

Structural Specifications

Designed by Shreve, Lamb & Harmon and completed in 1931, its antenna, its name is derived from "Empire State", the nickname of New York.

Construction

The original design of the Empire State Building was for a 50-story building with an airplane mast on top, to ensure it would be the world's tallest building.

Modern Day

The Empire State Building has long been a popular tourist attraction.

World Records

The Empire State Building stood as the world's tallest building from 1931 until the September 11 attacks in 2001. It was again the tallest building in the world from 2001 until the completion of the One World Trade Center in 2008.

Cultural Significance

It was designated a National Historic Landmark in 1986, and was featured in more than 250 TV shows and movies since the 1930s.

Margin 2, Scale 2, Light Weight

Empire State Building

The Empire State Building is a 102-story Art Deco skyscraper in New York City.

Overview

As of 2017 the building is the 5th-tallest completed skyscraper in the United States.

Structural Specifications

Designed by Shreve, Lamb & Harmon and completed in 1931, its antenna, its name is derived from "Empire State", the nickname of New York.

Construction

The original design of the Empire State Building was for a 50-story building with an airplane mast on top, to ensure it would be the world's tallest building.

Modern Day

The Empire State Building has long been a popular tourist attraction.

World Records

The Empire State Building stood as the world's tallest building from 1931 until the September 11 attacks in 2001. It was again the tallest building in the world from 2001 until the completion of the One World Trade Center in 2008.

Cultural Significance

It was designated a National Historic Landmark in 1986, and was featured in more than 250 TV shows and movies since the 1930s.

Margin 1, Scale 1, Mixed Weight

Eiffel Tower

The Eiffel Tower is a wrought-iron lattice tower on the Champ de Mars in Paris, France.

Overview

The Eiffel Tower is the most-visited paid monument in the world.

Construction

The tower was constructed from 1887-89 as the entrance to the 1889 Exposition Universelle. Although construction involved 300 on-site employees, it was initially criticized by some of France's leading artists and restaurant every day because it was the one place in Paris where the tower was visible.

Reception

It was initially criticized by some of France's leading artists and restaurant every day because it was the one place in Paris where the tower was visible.

Details

During its construction, the Eiffel Tower surpassed the Washington Monument as the tallest structure in the world.

Structural Details

The tower is 324 meters (1,063 feet) tall, about the same height as the Chrysler Building in New York City.

Visiting the Tower

The tower has three levels for visitors. The top level's upper platform is the only one open to the public.

Margin 1, Scale 2, Regular Weight

Eiffel Tower

The Eiffel Tower is a wrought-iron lattice tower on the Champ de Mars in Paris, France.

Overview

The Eiffel Tower is the most-visited paid monument in the world.

Construction

The tower was constructed from 1887-89 as the entrance to the 1889 Exposition Universelle. Although construction involved 300 on-site employees, it was initially criticized by some of France's leading artists and restaurant every day because it was the one place in Paris where the tower was visible.

Reception

It was initially criticized by some of France's leading artists and restaurant every day because it was the one place in Paris where the tower was visible.

Details

During its construction, the Eiffel Tower surpassed the Washington Monument as the tallest structure in the world.

Structural Details

The tower is 324 meters (1,063 feet) tall, about the same height as the Chrysler Building in New York City.

Visiting the Tower

The tower has three levels for visitors. The top level's upper platform is the only one open to the public.

Margin 2, Scale 1, Light Weight

Eiffel Tower

The Eiffel Tower is a wrought-iron lattice tower on the Champ de Mars in Paris, France.

Overview

The Eiffel Tower is the most-visited paid monument in the world.

Construction

The tower was constructed from 1887-89 as the entrance to the 1889 Exposition Universelle. Although construction involved 300 on-site employees, it was initially criticized by some of France's leading artists and restaurant every day because it was the one place in Paris where the tower was visible.

Reception

It was initially criticized by some of France's leading artists and restaurant every day because it was the one place in Paris where the tower was visible.

Details

During its construction, the Eiffel Tower surpassed the Washington Monument as the tallest structure in the world.

Structural Details

The tower is 324 meters (1,063 feet) tall, about the same height as the Chrysler Building in New York City.

Visiting the Tower

The tower has three levels for visitors. The top level's upper platform is the only one open to the public.

Margin 2, Scale 2, Bold Weight

Eiffel Tower

The Eiffel Tower is a wrought-iron lattice tower on the Champ de Mars in Paris, France.

Overview

The Eiffel Tower is the most-visited paid monument in the world.

Construction

The tower was constructed from 1887-89 as the entrance to the 1889 Exposition Universelle. Although construction involved 300 on-site employees, it was initially criticized by some of France's leading artists and restaurant every day because it was the one place in Paris where the tower was visible.

Reception

It was initially criticized by some of France's leading artists and restaurant every day because it was the one place in Paris where the tower was visible.

Details

During its construction, the Eiffel Tower surpassed the Washington Monument as the tallest structure in the world.

Structural Details

The tower is 324 meters (1,063 feet) tall, about the same height as the Chrysler Building in New York City.

Visiting the Tower

The tower has three levels for visitors. The top level's upper platform is the only one open to the public.

Margin 1, Scale 1, Bold Weight

White House

The White House is the official residence and workplace of the President and Vice President of the United States.

History

It is located at 1600 Pennsylvania Avenue NW in Washington, D.C.

Early History

The Executive Residence was completed in 1800. In 1814, it was burned down by British forces during the War of 1812. It was rebuilt and reopened in 1817.

Modern Day

The modern-day White House complex includes the Executive Residence, which houses offices for the President's staff and the Vice President's staff.

Details

The White House has an impressive array of amenities, and is a popular tourist attraction.

Layout and Amenities

The White House includes six stories and 55,000 sq ft of floor space, five full-time chefs, a tennis court, a single-level bus garage, and a swimming pool.

Visitors

The property is a National Heritage Site owned by the National Park Service, which is managed by the National Park Service.

Margin 1, Scale 2, Light Weight

White House

The White House is the official residence and workplace of the President and Vice President of the United States.

History

It is located at 1600 Pennsylvania Avenue NW in Washington, D.C.

Early History

The Executive Residence was completed in 1800. In 1814, it was burned down by British forces during the War of 1812. It was rebuilt and reopened in 1817.

Modern Day

The modern-day White House complex includes the Executive Residence, which houses offices for the President's staff and the Vice President's staff.

Details

The White House has an impressive array of amenities, and is a popular tourist attraction.

Layout and Amenities

The White House includes six stories and 55,000 sq ft of floor space, five full-time chefs, a tennis court, a single-level bus garage, and a swimming pool.

Visitors

The property is a National Heritage Site owned by the National Park Service, which is managed by the National Park Service.

Margin 2, Scale 1, Mixed Weight

White House

The White House is the official residence and workplace of the President and Vice President of the United States.

History

It is located at 1600 Pennsylvania Avenue NW in Washington, D.C.

Early History

The Executive Residence was completed in 1800. In 1814, it was burned down by British forces during the War of 1812. It was rebuilt and reopened in 1817.

Modern Day

The modern-day White House complex includes the Executive Residence, which houses offices for the President's staff and the Vice President's staff.

Details

The White House has an impressive array of amenities, and is a popular tourist attraction.

Layout and Amenities

The White House includes six stories and 55,000 sq ft of floor space, five full-time chefs, a tennis court, a single-level bus garage, and a swimming pool.

Visitors

The property is a National Heritage Site owned by the National Park Service, which is managed by the National Park Service.

Margin 2, Scale 2, regular Weight

White House

The White House is the official residence and workplace of the President and Vice President of the United States.

History

It is located at 1600 Pennsylvania Avenue NW in Washington, D.C.

Early History

The Executive Residence was completed in 1800. In 1814, it was burned down by British forces during the War of 1812. It was rebuilt and reopened in 1817.

Modern Day

The modern-day White House complex includes the Executive Residence, which houses offices for the President's staff and the Vice President's staff.

Details

The White House has an impressive array of amenities, and is a popular tourist attraction.

Layout and Amenities

The White House includes six stories and 55,000 sq ft of floor space, five full-time chefs, a tennis court, a single-level bus garage, and a swimming pool.

Visitors

The property is a National Heritage Site owned by the National Park Service, which is managed by the National Park Service.

Margin 1, Scale 1, light Weight

Grand Canyon National Park

Grand Canyon National Park, located in northeastern Arizona, is a United States National Park.

Overview

The park's central feature is the Grand Canyon, a gorge of the Colorado River.

History

The Grand Canyon was officially designated a national park on September 8, 1909. It was declared a World Heritage Site in 1979.

Geography

The Grand Canyon, including its extensive system of tributary canyons, is a geological wonder.

Activities

The primary public areas of the park are the North and South Rims.

South Rim

There is a driving tour of 35 miles along the South Rim, which is followed by 7 miles up to Hermit's Rest. Private car is available for hire.

North Rim

On the North Rim there are few roads, however, there are some available that go to several thousand feet down into the canyon.

Margin 1, Scale 2, bold Weight

Grand Canyon National Park

Grand Canyon National Park, located in northeastern Arizona, is a United States National Park.

Overview

The park's central feature is the Grand Canyon, a gorge of the Colorado River.

History

The Grand Canyon was officially designated a national park on September 8, 1909. It was declared a World Heritage Site in 1979.

Geography

The Grand Canyon, including its extensive system of tributary canyons, is a geological wonder.

Activities

The primary public areas of the park are the North and South Rims.

South Rim

There is a driving tour of 35 miles along the South Rim, which is followed by 7 miles up to Hermit's Rest. Private car is available for hire.

North Rim

On the North Rim there are few roads, however, there are some available that go to several thousand feet down into the canyon.

Margin 2, Scale 1, regular Weight

Grand Canyon National Park

Grand Canyon National Park, located in northeastern Arizona, is a United States National Park.

Overview

The park's central feature is the Grand Canyon, a gorge of the Colorado River.

History

The Grand Canyon was officially designated a national park on September 8, 1909. It was declared a World Heritage Site in 1979.

Geography

The Grand Canyon, including its extensive system of tributary canyons, is a geological wonder.

Activities

The primary public areas of the park are the North and South Rims.

South Rim

There is a driving tour of 35 miles along the South Rim, which is followed by 7 miles up to Hermit's Rest. Private car is available for hire.

North Rim

On the North Rim there are few roads, however, there are some available that go to several thousand feet down into the canyon.

Margin 2, Scale 2, mixed Weight

Grand Canyon National Park

Grand Canyon National Park, located in northeastern Arizona, is a United States National Park.

Overview

The park's central feature is the Grand Canyon, a gorge of the Colorado River.

History

The Grand Canyon was officially designated a national park on September 8, 1909. It was declared a World Heritage Site in 1979.

Geography

The Grand Canyon, including its extensive system of tributary canyons, is a geological wonder.

Activities

The primary public areas of the park are the North and South Rims.

South Rim

There is a driving tour of 35 miles along the South Rim, which is followed by 7 miles up to Hermit's Rest. Private car is available for hire.

North Rim

On the North Rim there are few roads, however, there are some available that go to several thousand feet down into the canyon.

Heading Study Stimulus Examples

Margin 1, Scale 1, Regular Weight

Empire State Building

The Empire State Building is a 102-story Art Deco skyscraper in

Overview

As of 2017 the building is the 5th-tallest completed skyscraper

Structural Specifications

Designed by Shreve, Lamb & Harmon and completed in 1931, its antenna. Its name is derived from "Empire State", the nickna

Construction

The original design of the Empire State Building was for a 50-st with an airship mast on top, to ensure it would be the world's t

Modern Day

The Empire State Building has long been a popular tourist attra

World Records

The Empire State Building stood as the world's tallest building f 1970. Following the September 11 attacks in 2001, it was again

Cultural Significance

It was designated a National Historic Landmark in 1986, and we been featured in more than 250 TV shows and movies since the

Margin 1, Scale 2, Mixed Weight

Empire State Building

The Empire State Building is a 102-story Art Deco skyscraper in

Overview

As of 2017 the building is the 5th-tallest completed skyscraper

Structural Specifications

Designed by Shreve, Lamb & Harmon and completed in 1931, its antenna. Its name is derived from "Empire State", the nickna

Construction

The original design of the Empire State Building was for a 50-st with an airship mast on top, to ensure it would be the world's t

Modern Day

The Empire State Building has long been a popular tourist attra

World Records

The Empire State Building stood as the world's tallest building f 1970. Following the September 11 attacks in 2001, it was again

Cultural Significance

It was designated a National Historic Landmark in 1986, and we been featured in more than 250 TV shows and movies since the

Margin 2, Scale 1, Bold Weight

Empire State Building

The Empire State Building is a 102-story Art Deco skyscraper in

Overview

As of 2017 the building is the 5th-tallest completed skyscraper

Structural Specifications

Designed by Shreve, Lamb & Harmon and completed in 1931, its antenna. Its name is derived from "Empire State", the nickna

Construction

The original design of the Empire State Building was for a 50-st with an airship mast on top, to ensure it would be the world's t

Modern Day

The Empire State Building has long been a popular tourist attra

World Records

The Empire State Building stood as the world's tallest building f 1970. Following the September 11 attacks in 2001, it was again

Cultural Significance

It was designated a National Historic Landmark in 1986, and we been featured in more than 250 TV shows and movies since the

Margin 2, Scale 2, Light Weight

Empire State Building

The Empire State Building is a 102-story Art Deco skyscraper in

Overview

As of 2017 the building is the 5th-tallest completed skyscraper

Structural Specifications

Designed by Shreve, Lamb & Harmon and completed in 1931, its antenna. Its name is derived from "Empire State", the nickna

Construction

The original design of the Empire State Building was for a 50-st with an airship mast on top, to ensure it would be the world's t

Modern Day

The Empire State Building has long been a popular tourist attra

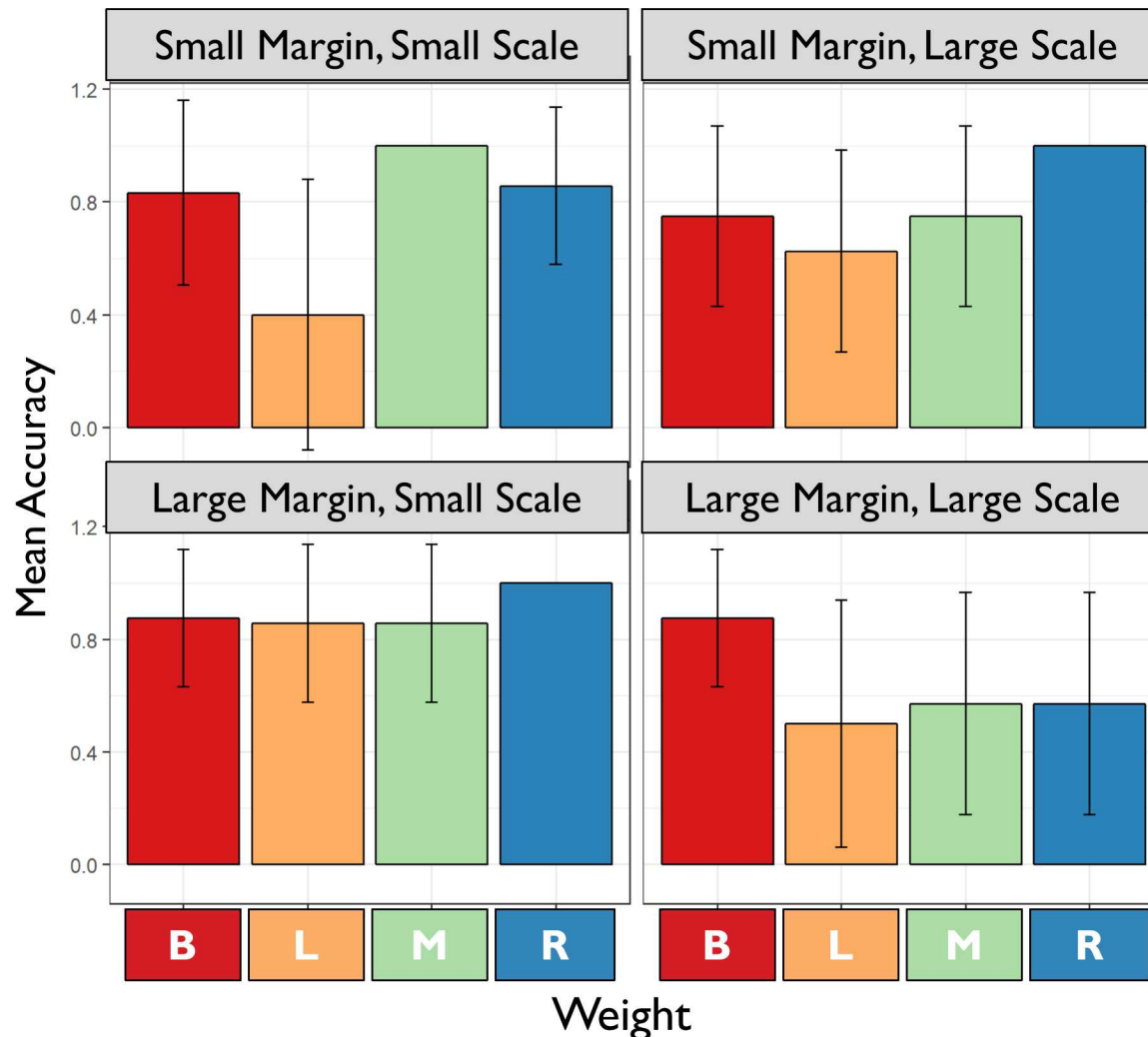
World Records

The Empire State Building stood as the world's tallest building f 1970. Following the September 11 attacks in 2001, it was again

Cultural Significance

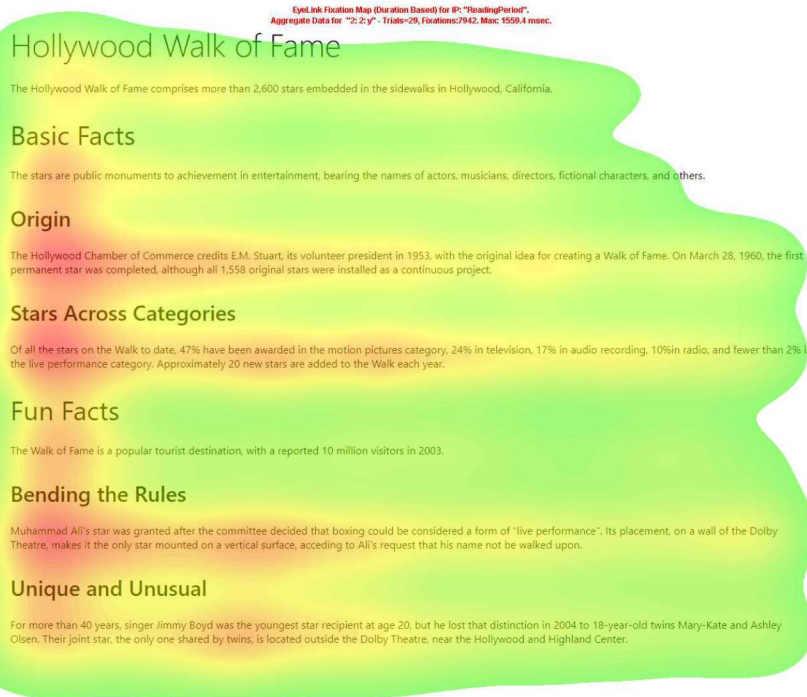
It was designated a National Historic Landmark in 1986, and we been featured in more than 250 TV shows and movies since the

Heading Study Results: Comprehension Question Accuracy



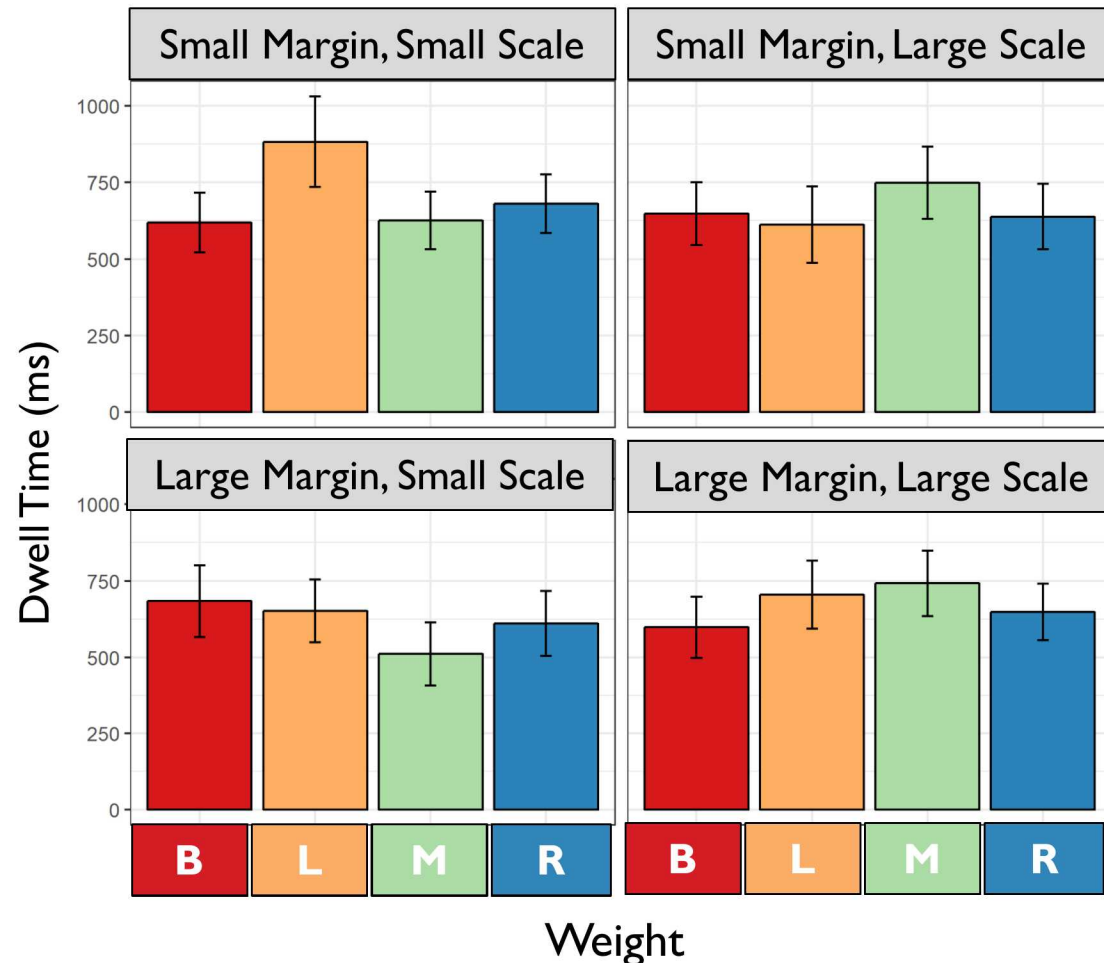
- Passages with light headings had the lowest accuracy, especially with small margin, small scale (*top left*)
- Large margin, large scale combination showed lowest comprehension accuracy (*bottom right*)—except for bold

Heading Study Results: Viewing Patterns



- People read whole passage
- No clear differentiation between looks to heading versus body text
- Poor "return sweep" targeting
- This could explain why the bolder font helps comprehension in the more compressed passages

Heading Study Results: Heading Dwell Time



- Dwell times were longest for conditions with worst comprehension
 - Light headings (Small scale, small margin)
 - Light and mixed headings (Large margin, large scale)
- Indicates poor comprehension driven by difficult attentional allocation

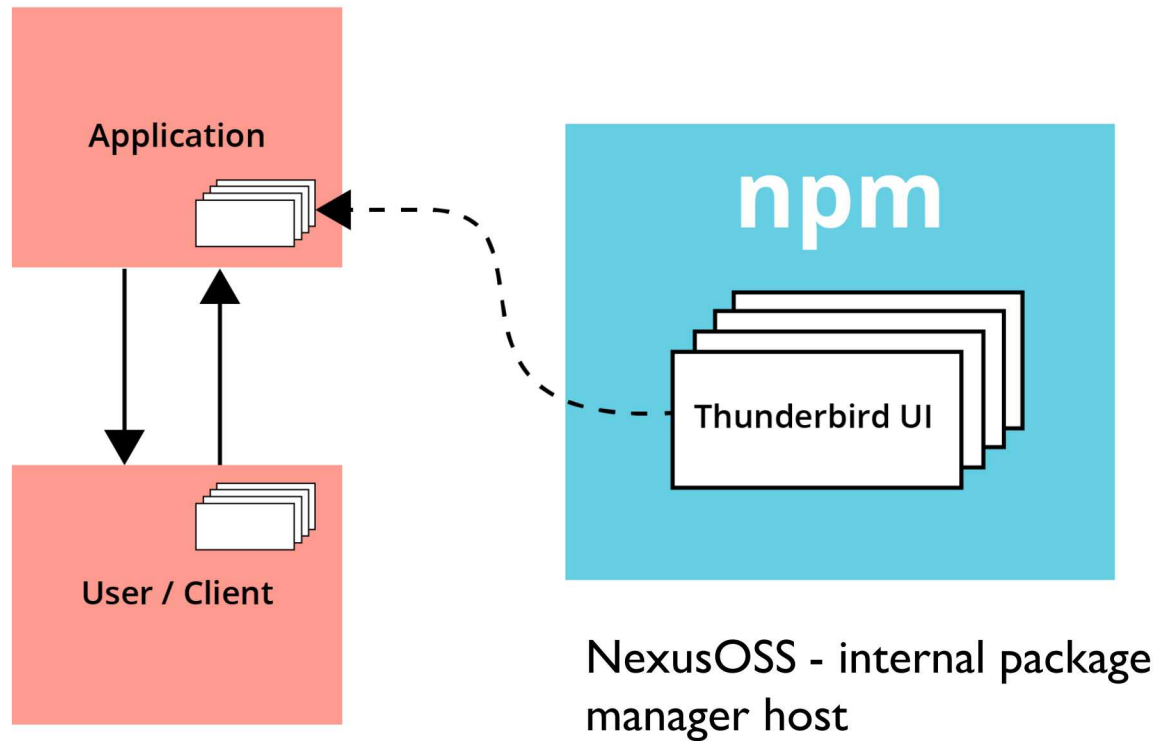
Headings Study: Recommendations for TUI

- Avoid extreme Margin / Scale combinations
 - If must use extremely compressed or spaced out text, bold font weight will help readers target fixations
 - Especially avoid light headings, as they produced longest viewing times and lowest comprehension
- “Best” Combinations:
 - Small Scale/Large Margin or Large Margin/Small Scale, with regular weight
 - Produced best comprehension and lowest viewing times
- Caveats
 - Task constraints
 - Differences in visual layout
 - Small sample

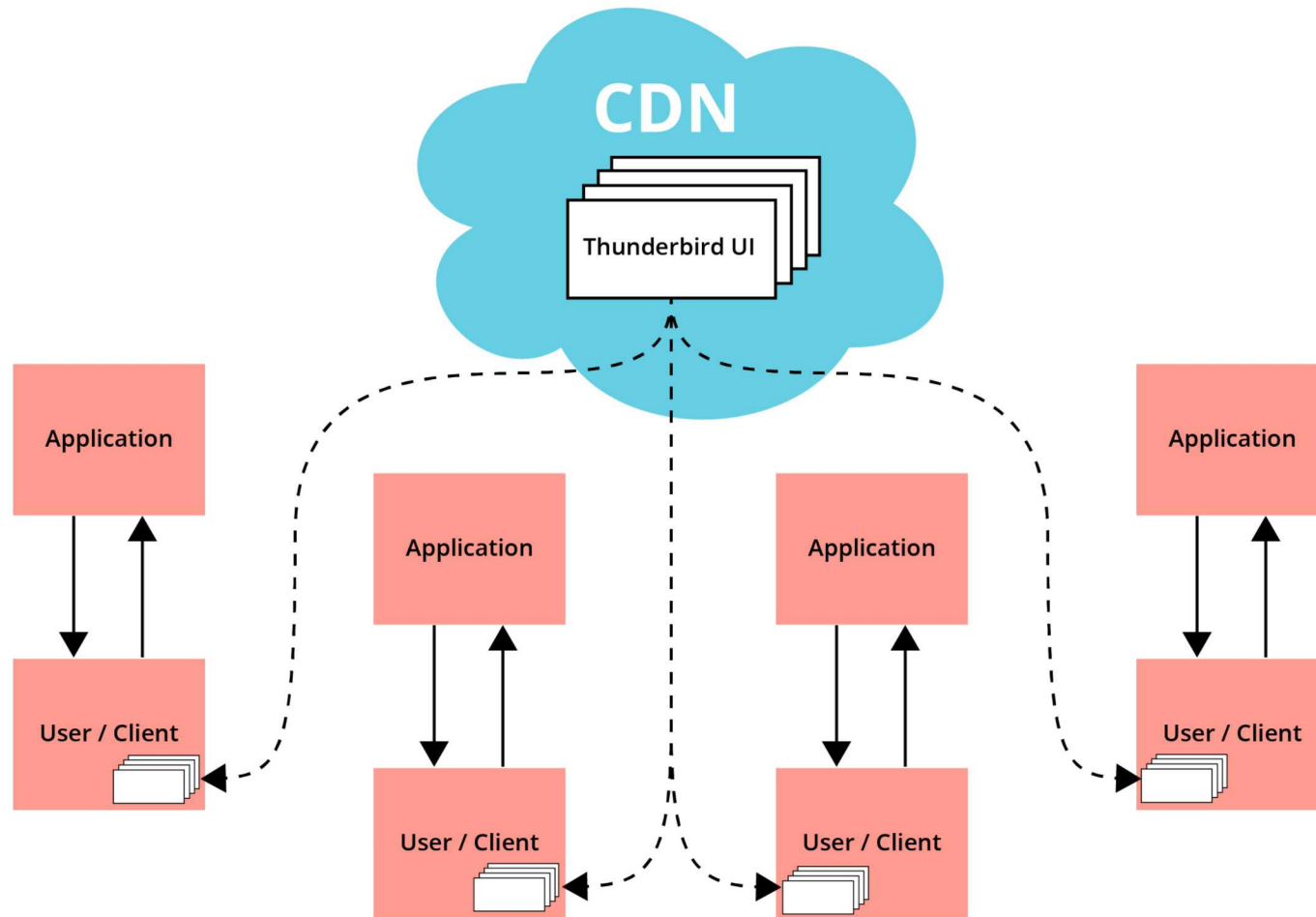


Distribution and Adoption

Distribution - Package Manager



Distribution - CDN



Socialization and Outreach

- Grassroots approach
 - Conceive of TUI as “everyone’s design system”
 - Aspire to run project as “open source”
- Community Engagement
 - Developer team interviews
 - 16 interviews with 17 development teams
 - Brown Bag Sessions



Resistance and Barriers

- Perception that it's expensive to implement
- Teams want control over their own design
- Teams want control over their own code
- Lack of trust
 - Trusting other team's code
 - Global Header fiasco!



INSIDE

SMM

Policies

Orgs

News

Sandia



People/Orgs





Return on Investment

How to Assess Return on Investment (ROI) for TUI?

- Given the significant time and money investment made to develop TUI, does it increase efficiency?
- We assessed this in two ways:
 - Development team efficiency
 - Semi-structured interviews
 - Compared responses between teams currently using TUI or not to assess whether it saved them time or money
 - User efficiency on websites using TUI
 - Web analytics metrics of sites using TUI to assess whether it streamlined user interactions relative to sites not using TUI

Measuring ROI: Development Team Efficiency

- Interviewed 5 development teams over 7 interview sessions
 - 3 sites were using TUI, 2 were not
- Questions included:
 - Did you use TUI in your development process? Why or why not?
 - How was TUI implemented?
 - How did it affect your development process? (If you didn't use it, how do you *think* it would have impacted your team?)

Measuring ROI: Development Team Efficiency (I)

- Development teams were highly positive
 - Generally think it saves time
 - More professional-looking and consistent sites
 - Saves M&O costs (bug fixes automatically rolled out)
- Difficult to provide *measurable* ways TUI helped
 - Estimates range from 20% time savings on a regular site to 80-90% time savings for a very simple site
 - One site said a high school intern created a site from scratch in ~53 hours

Measuring ROI: Development Team Efficiency (2)

- All teams reported that TUI saved them time when:
 - Setting up a new site
 - Implementing basic features (which is “tedious”)
- Time-savings on basic tasks allowed developed to:
 - Develop more custom features
 - Address customer-specific requests
 - Work on more creative, challenging work

Measuring ROI: Development Team Efficiency

- Not all teams used TUI in intended way
 - Some sites were being developed in parallel, and so they custom-coded elements to *look like* TUI
 - Some sites store locally-hosted versions of TUI, which causes challenges:
 - Changing referenced paths
 - Re-downloading when new versions are released
- Noted drawbacks include:
 - Addition of features not in TUI
 - Customization of TUI assets to meet customer needs
 - Limits developer freedom and creativity
 - Lack of features present in more mature libraries

Measuring ROI: Development Team Efficiency

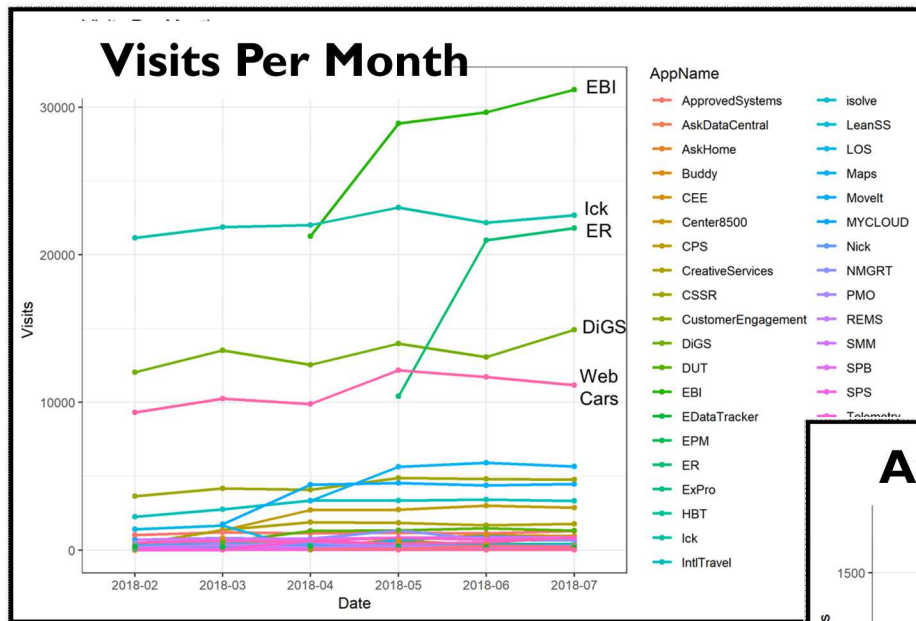
- Caveats of findings:
 - Small sample size
 - Lack of baseline of development team efficiency (and general difficulty with measuring development team efficiency/productivity)
 - Lack of quantitative measurement of TUI efficiency gains
 - TUI Maturity at time of use



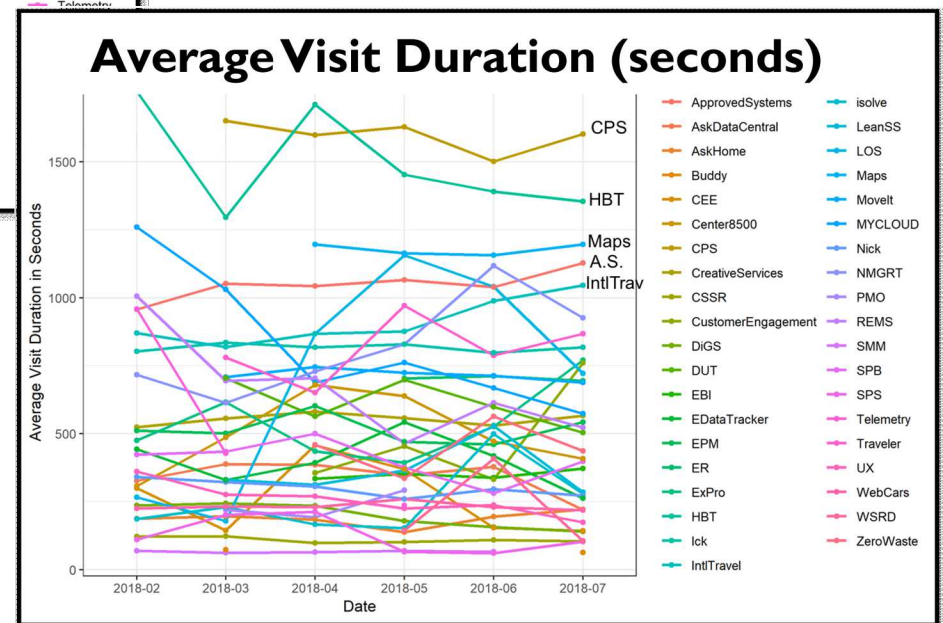
Measuring ROI: Web Analytics Metrics

- Web analytics metrics capture data regarding how users naturally interact with websites
- Basic metrics include:
 - Number of visitors (unique or total)
 - Time on site
 - Number of pageviews per visit
- Recommendation for usage:
 - Establish baseline levels of time MOWs spend on internal websites
 - Measure changes to these levels after TUI implementation
 - Direct measurement of corporate time savings across large population (12,000+ employees)

Measuring ROI: Web Analytics Metrics (Example)



Identify sites with the longest visit durations to target improvements



“Is this better?”

- Than what?
 - Need to establish baselines on key metrics *before* making changes in order to measure improvements
- For whom?
 - Improving development team efficiency is a very thorny issue. May depend on:
 - Site/application characteristics: complexity, purpose, budget
 - Team characteristics: size, experience level, etc.
 - Improving user efficiency might be easier to measure using web analytics
 - Goal in enterprise applications (i.e., reduce time on sites) likely different from commercial applications (i.e., increase time on site, profits, etc.)



Path Forward and Lessons Learned

Path forward for Thunderbird UI

- Implement governance
- Additional front-end technologies
 - Angular
 - React

Lessons Learned

- Buy-in can be a challenge
 - Do lots of outreach
 - Cultivate grassroots, open source approach
 - Need executive leadership support
- Make the design system easy to use
 - Easily accessible. Don't make devs jump through hoops.
 - Keep code clean! Improves trust.
- Measuring ROI
 - Establish a baseline before you start making changes



Thank you!

Questions?

