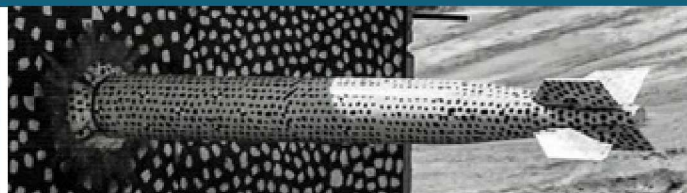
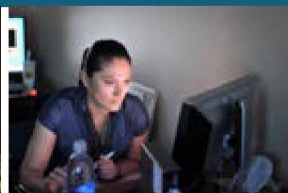


# Evaluating Safety from Risk to Solution: Using Cross-Organizational Partnerships to Drive Greater Understanding and Improvement



*PRESENTED BY*

Lee Crowder

Yvonne Petrova



Sandia National Laboratories is a multimission laboratory managed and operated by National Technology & Engineering Solutions of Sandia, LLC, a wholly owned subsidiary of Honeywell International Inc., for the U.S. Department of Energy's National Nuclear Security Administration under contract DE-NA0003525.

**In June 2018, a member of the workforce at Sandia National Laboratories experienced an electrical shock while working on equipment.**

# Cross-Organizational Partnership



Environment, Safety  
& Health (ES&H)



Safety  
Experts

Contractor Assurance System (CAS)



Assurance  
Analytics  
Experts

# Cross-Organizational Partnership



- **CAS data scientists provide predictive modeling capabilities.**

Example: ASSURE\* for Safety (a behavioral predictive model)

- **CAS statisticians and analysts provide statistical rigor for objectively assessing safety performance.**

Example: Control Charts

# Cross-Organizational Partnership



- **CAS data scientists provide predictive modeling capabilities.**

Example: ASSURE\* for Safety (a behavioral predictive model)

- **CAS statisticians and analysts provide statistical rigor for objectively assessing safety performance.**

Example: Control Charts



# ASSURE for Safety



Unique behavioral predictive model developed with two goals:

1. Identify at the end of each quarter those organizations at high risk for one or more safety incidents in the next six months.
2. Identify predictive indicators from corporate data systems that demonstrate significant relationships to future safety incidents .

Unique because it was developed using Sandia data and Sandia safety incidents – specifically developed for Sandia, by Sandia!

# ASSURE for Safety



**This behavioral predictive model CAN**

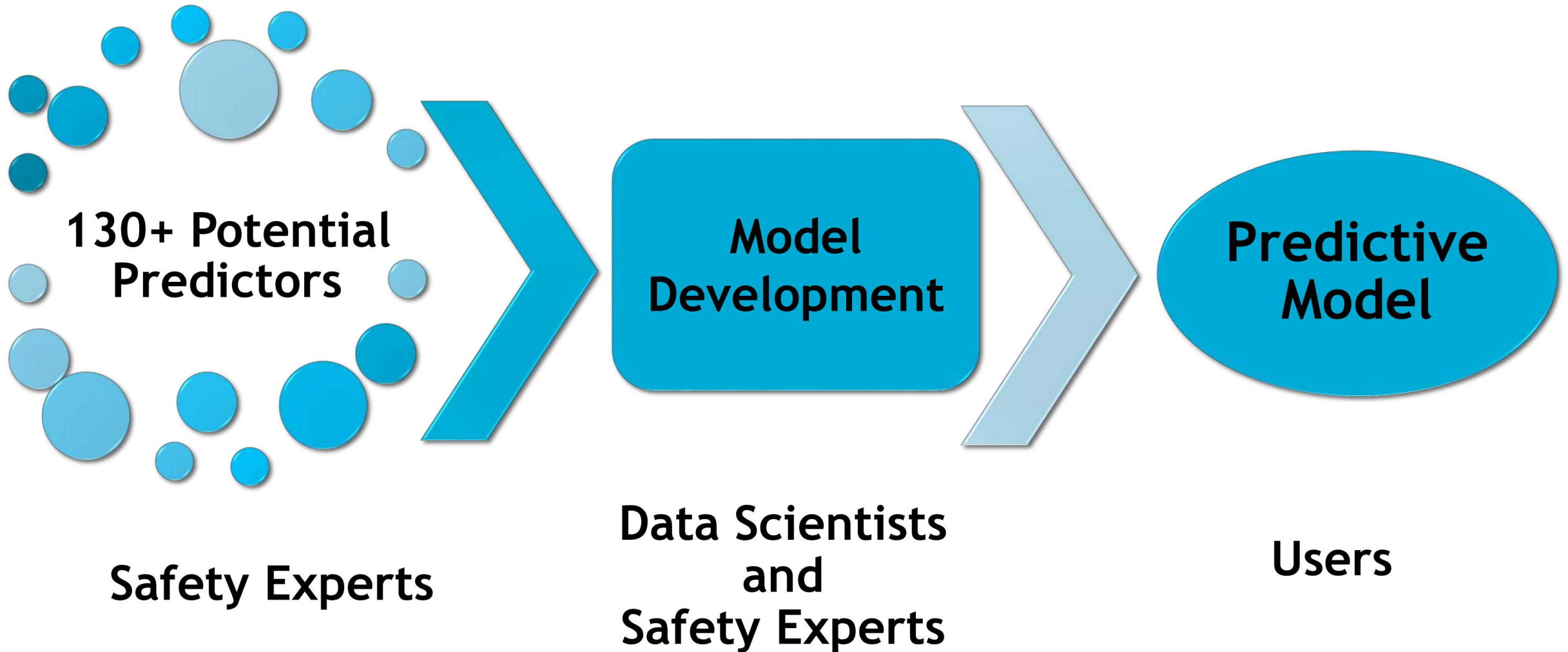
**Effectively separate two populations:**

1. Employees who will have a safety incident in the next six months.
2. Employees who will not have a safety incident in the next six months.

**It CANNOT**

**Identify a specific person who will have a safety incident at a specific time.**

# ASSURE for Safety

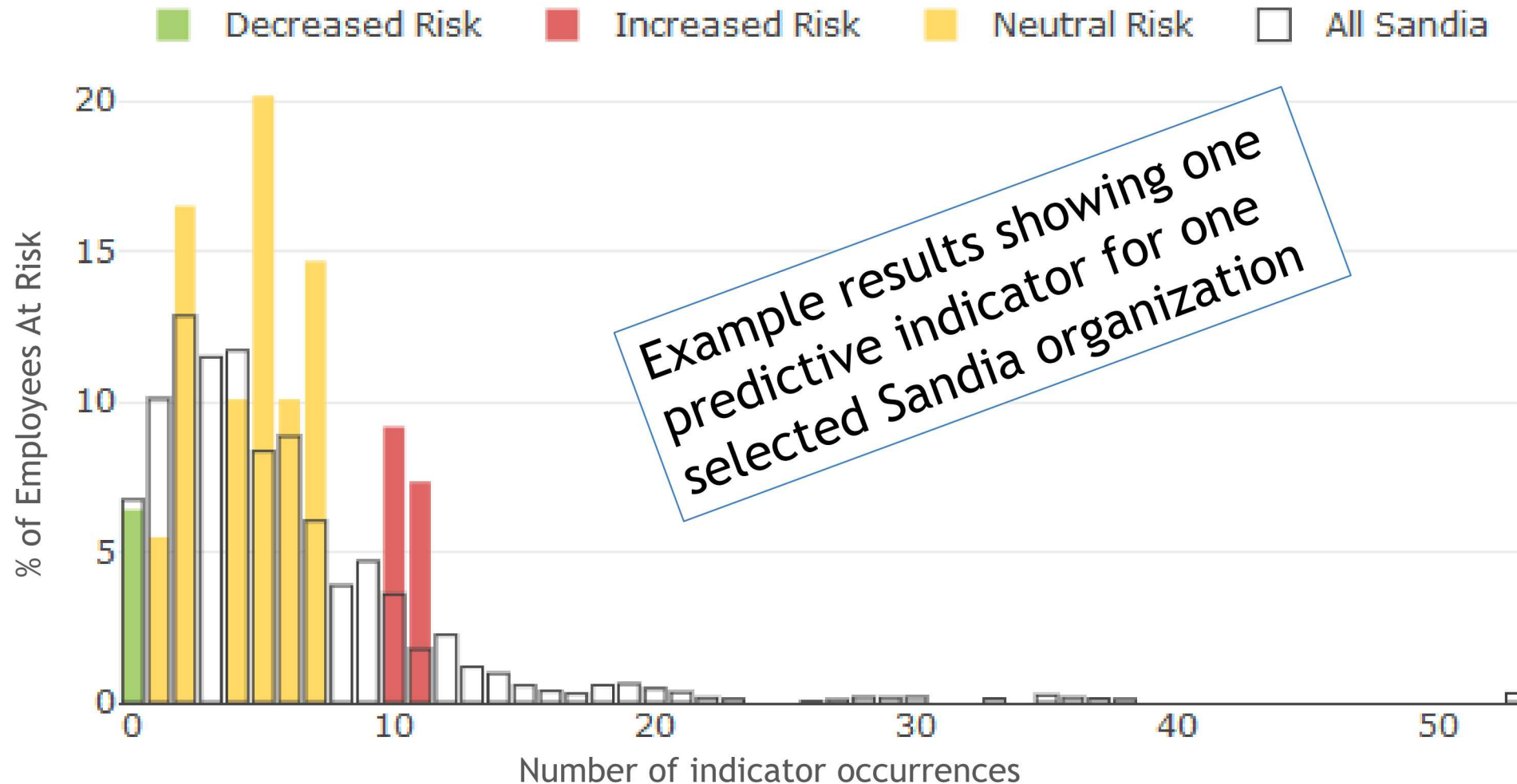




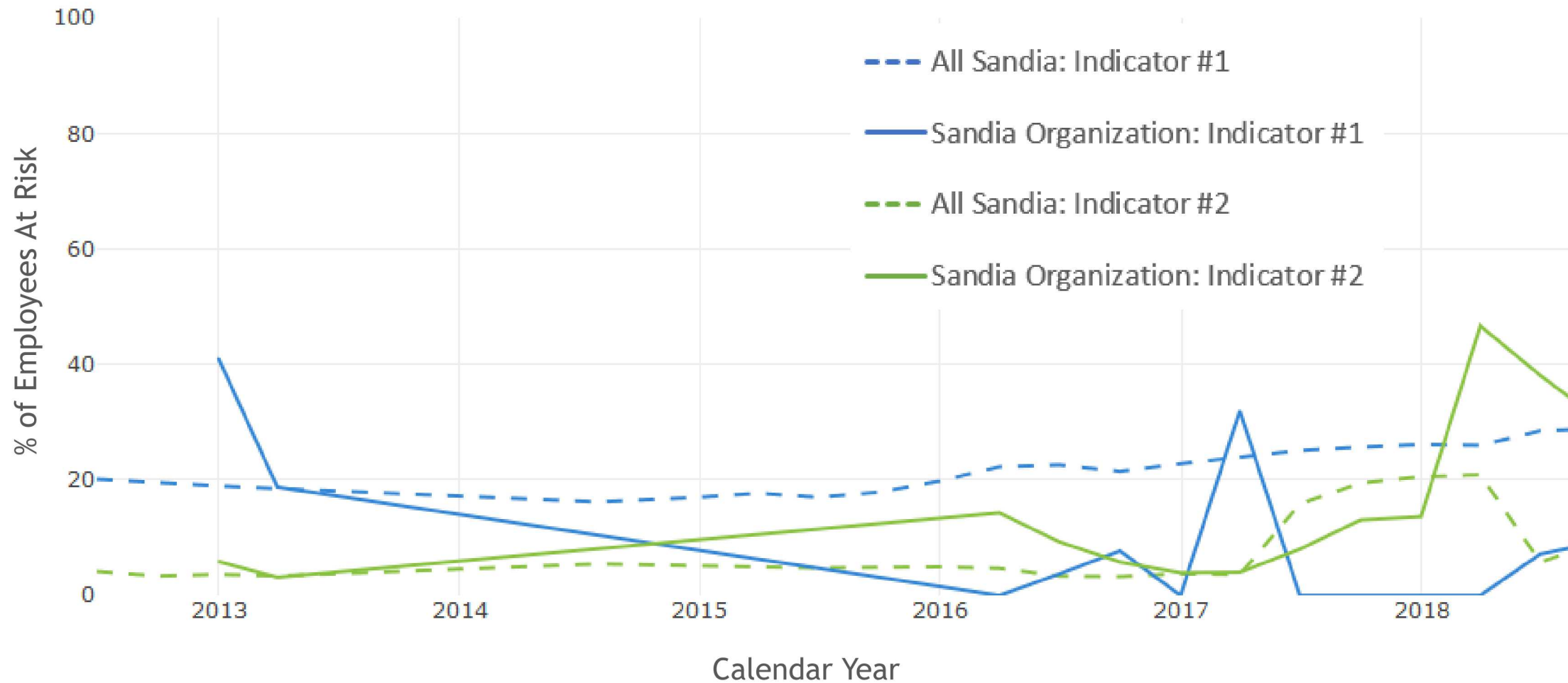
# ASSURE for Safety



Model runs in production at the end of each quarter.  
Historical quarterly results are available for more than four years.



# ASSURE for Safety



# Cross-Organizational Partnership



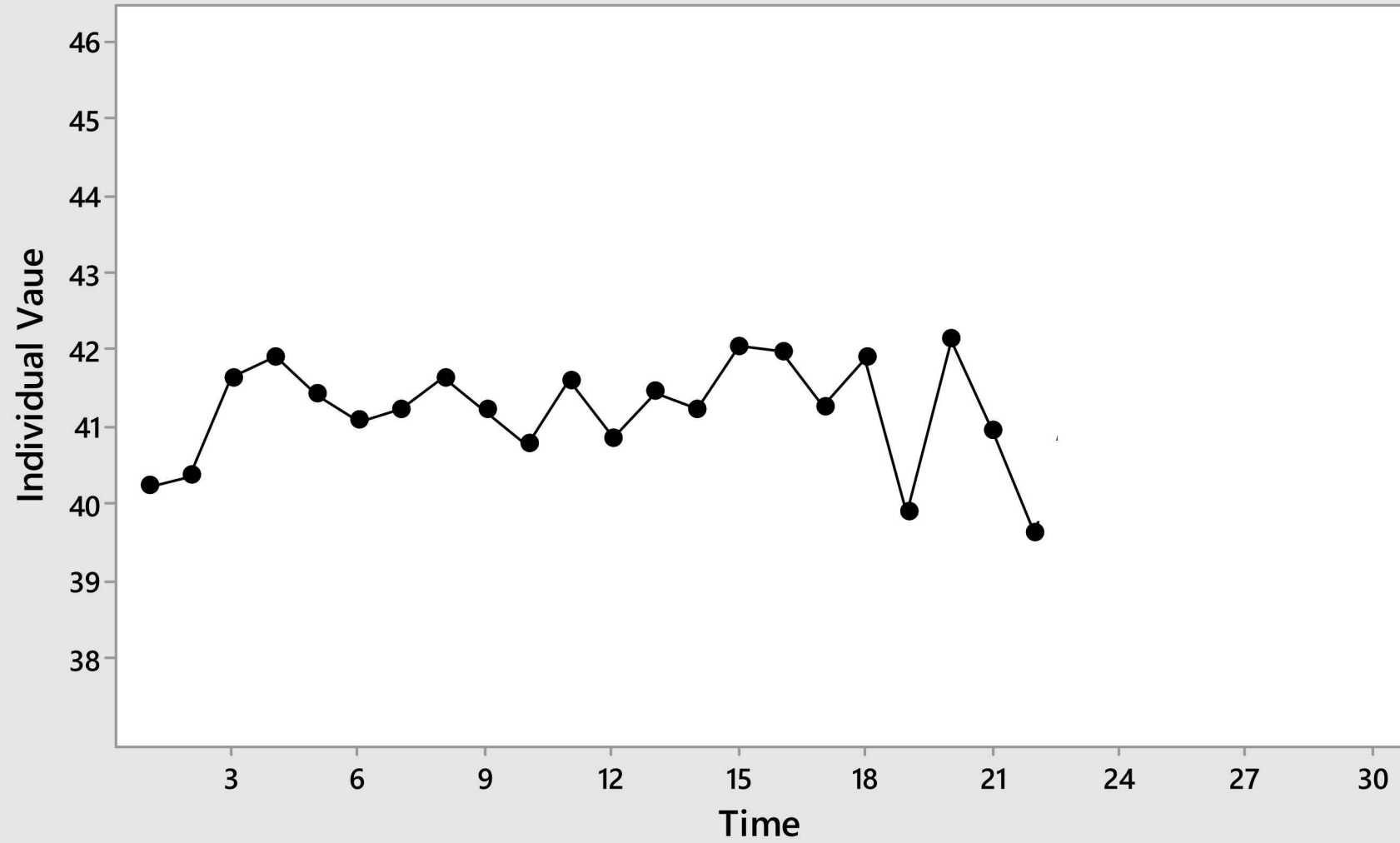
- **CAS data scientists provide predictive modeling capabilities.**

Example: ASSURE\* for Safety (a behavioral predictive model)

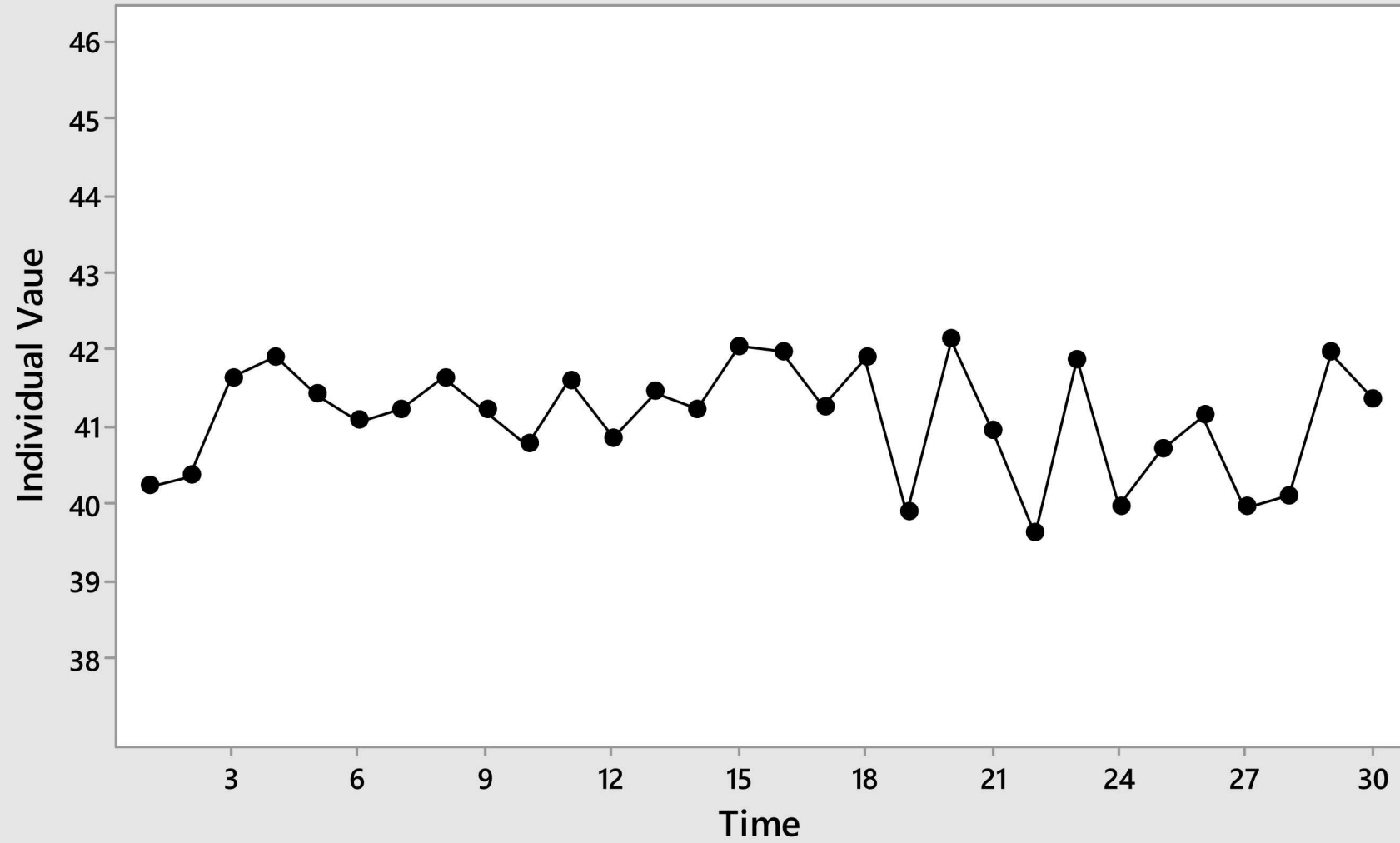
- **CAS statisticians and analysts provide statistical rigor for objectively assessing safety performance.**

Example: Control Charts

## Indicator Time Plot



## Indicator Time Plot



# Why Use Control Charts?

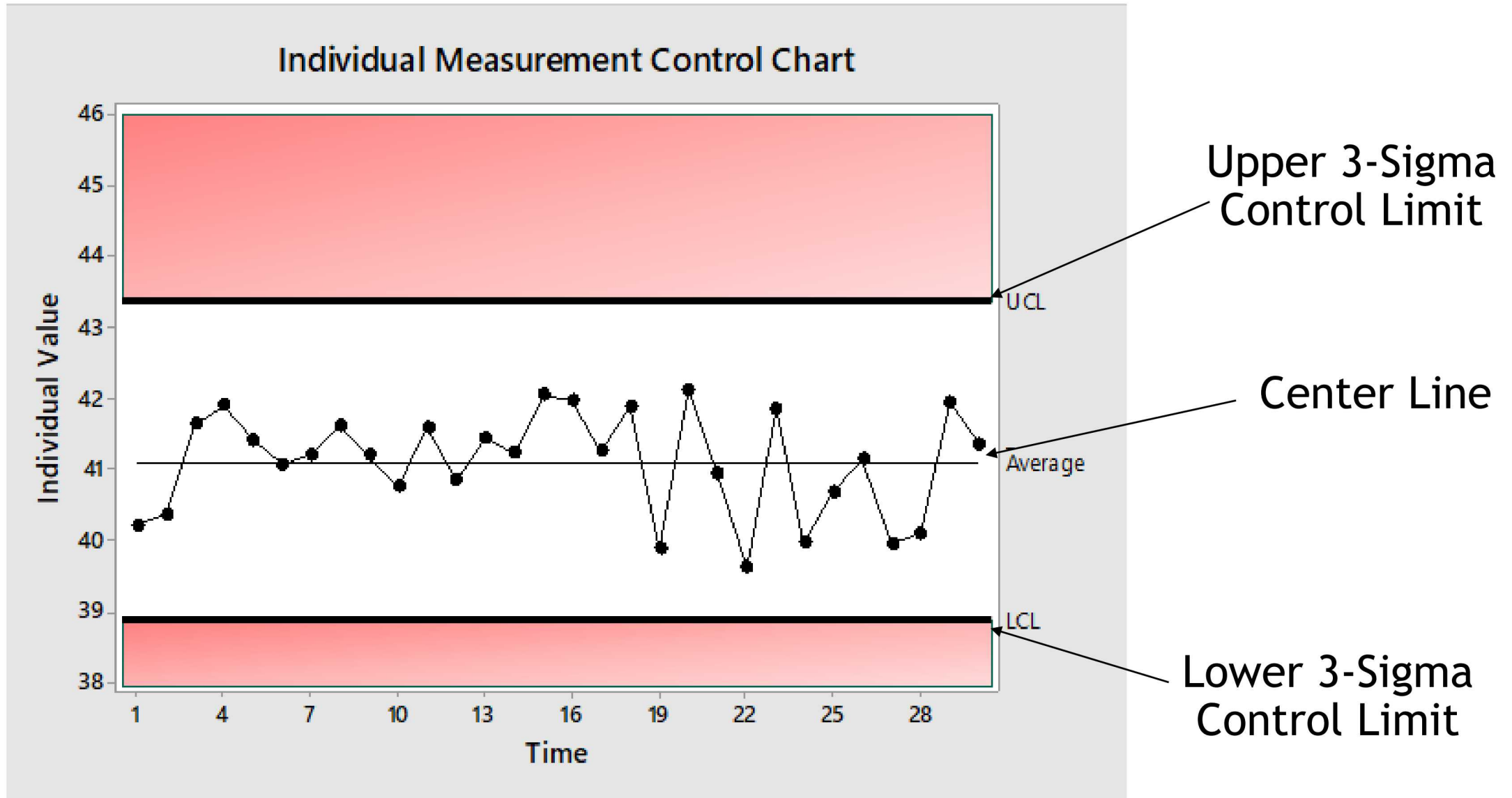


We can subjectively assess performance by observing month-to-month changes for a lagging indicator.

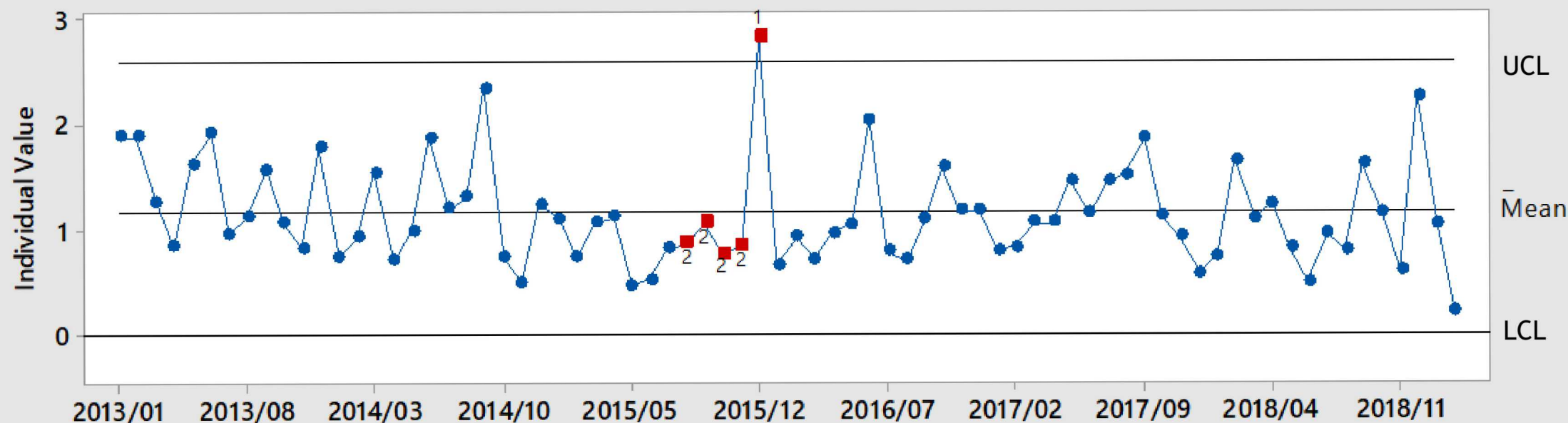
But ... are the changes we see significant (meaningful)?

	Month 1	Month 2	Month 3	Month 4	Month 5	Month 6
Lagging Indicator	1.16	0.71	2.19	1.04	0.35	0.64
Above/Below Target	above	below	above	above	below	below
Direction Change		decrease	increase	decrease	decrease	increase
Year-to-Date Average	1.16	0.94	1.35	1.28	1.09	1.02
Year-to-Date Change		decrease	increase	decrease	decrease	decrease





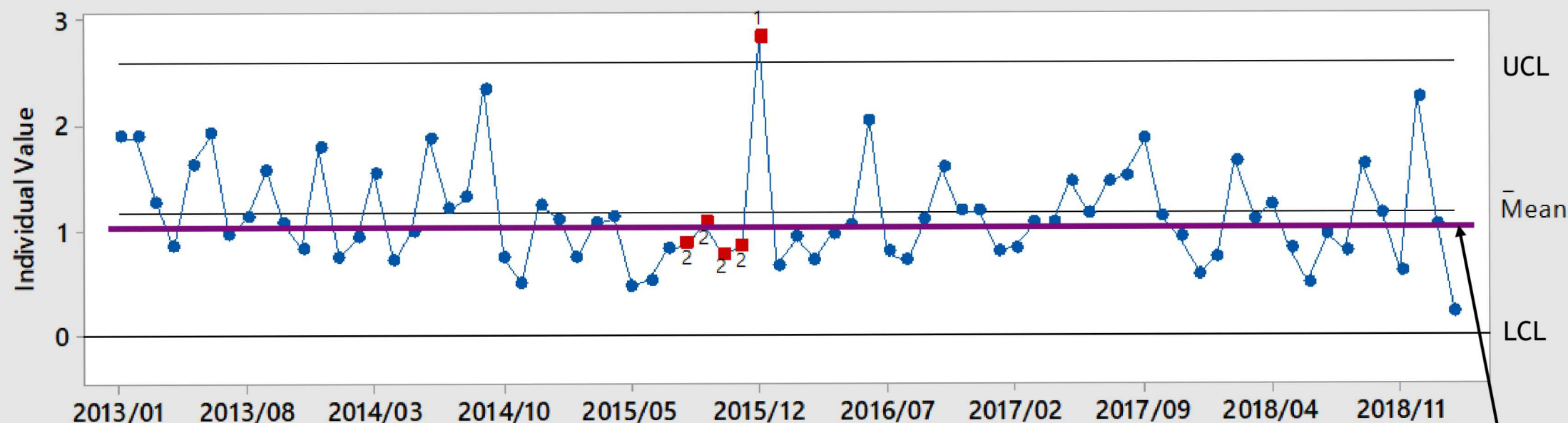
## Individual Measurement Control Chart



Lower values  
are better



## Individual Measurement Control Chart



Lower values  
are better



Target Line

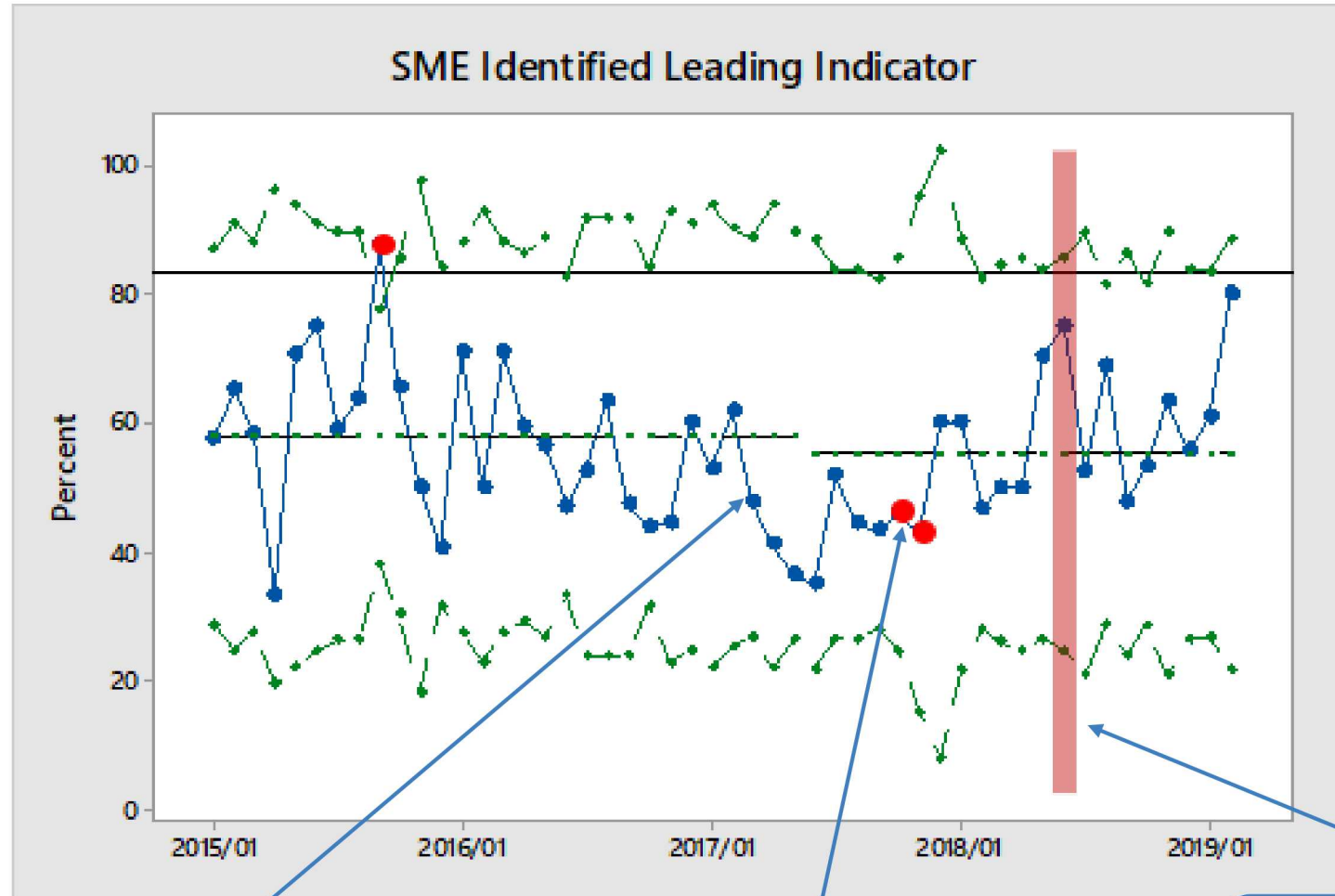
**In June 2018, a member of the workforce at Sandia National Laboratories experienced an electrical shock while working on equipment.**

# Control Charts



Sandia safety experts identified a leading indicator.

Low values indicate trouble might be brewing.



Values appear to progressively decline early in 2017.

Runs rule is violated twice. Performance is significantly low.

Electrical shock occurs.

# ASSURE: Predictive Indicator A

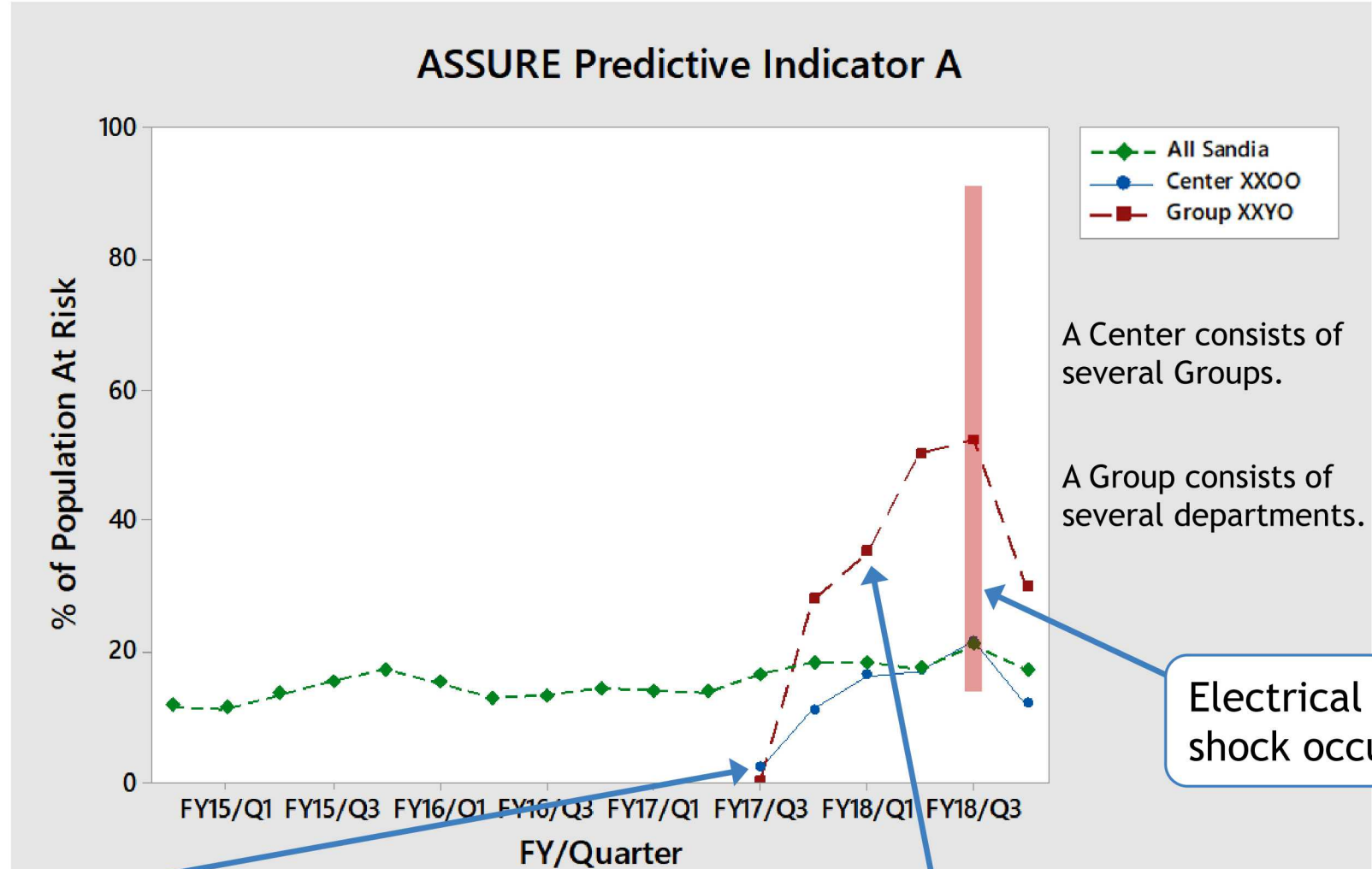


## Populations

All Sandia:  $\approx 13,000$

Center XX00:  $\approx 450$

Group XXY0:  $\approx 75$

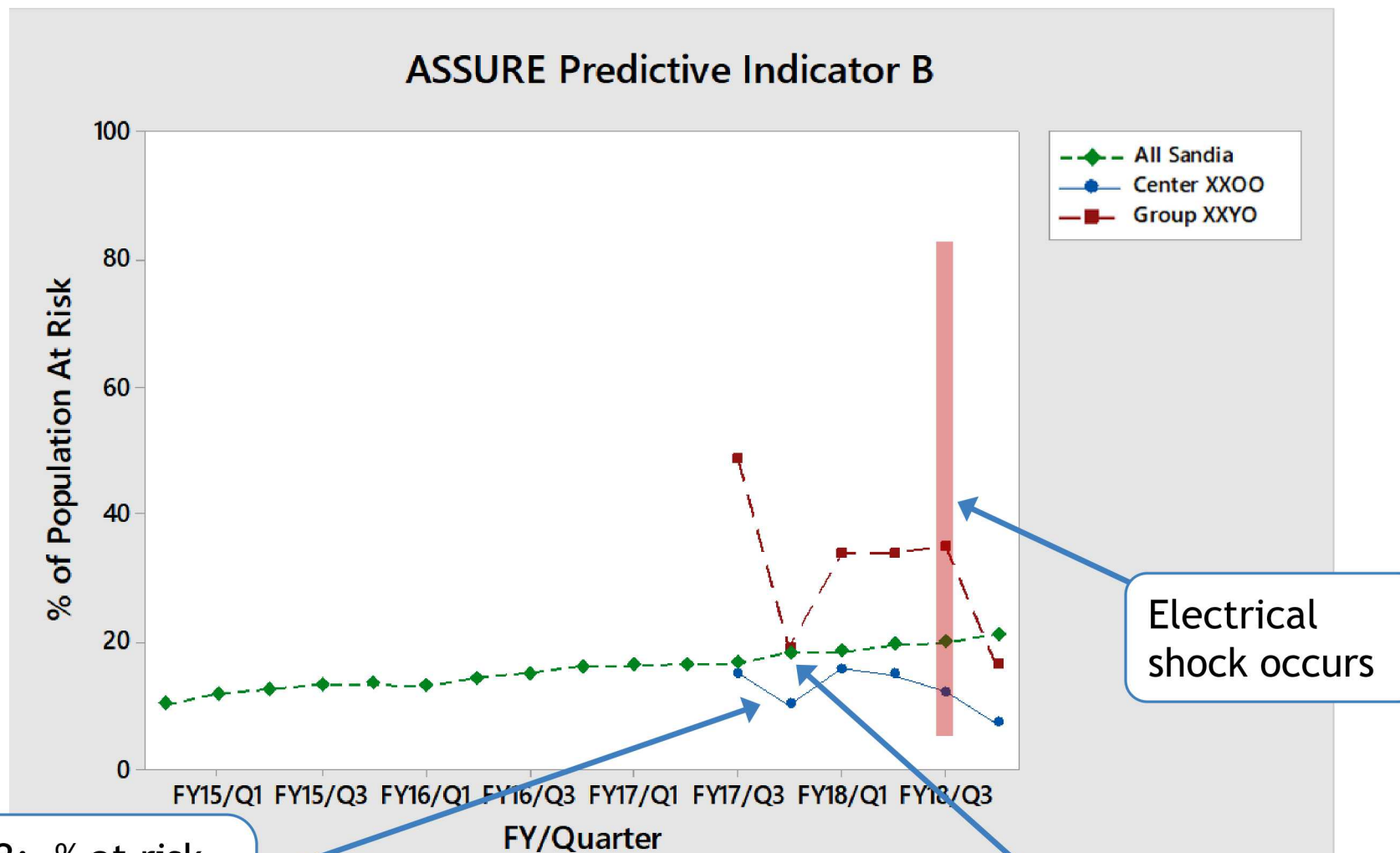


FY17/Q3: % at risk in both Center and Group are well below the levels for all of Sandia

FY17/Q4 - FY18/Q3: % at risk in Group exceeds that of the Center *and* Sandia



# ASSURE: Predictive Indicator B



FY17/Q3 - FY18/Q3: % at risk in Center is consistently below the levels for all of Sandia

FY17/Q4: % at risk in Group drops but otherwise is at a level much higher than that of the Center *and* Sandia

Electrical shock occurs

**In June 2018, a member of the workforce at Sandia National Laboratories experienced an electrical shock while working on equipment.**

### **Prior to this incident**

- Changes in a leading indicator showed possible safety concerns for Sandia as a whole.
- Through ASSURE, multiple predictive indicators showed increased risk for Group XXY0 in the quarters leading up to the incident.

# Evaluating Safety from Risk to Solution: Using Cross-Organizational Partnerships to Drive Greater Understanding and Improvement

## **Our journey is just beginning. Vision for the future...**

- Continue to nurture our partnership with ES&H
- Further develop leading indicators and predictive modeling to better identify at-risk populations.
- Determine how to effectively monitor the data.
- Improve processes to identify and execute effective mitigations to reduce risk and help our workers stay safe.
- Continue the partnership between Contractor Assurance and safety SMEs.
  - Inform
  - Anticipate
  - Be proactive
  - Prevent

# Questions