



**ZAPP20a shots z3459, z3460, z3461 and z3462.  
Ride-along Z data on LOS 330 for UNR university collaborators.**

**PI/Co-PI: G. P. Loisel, J. E. Bailey (org. 1688)**

Requesting unlimited release to University of Nevada, Reno collaborators:  
Roberto Mancini (professor, advisor), Dan Mayes (graduate student) and Kyle Swanson (graduate student)



**Target shot sequence:**

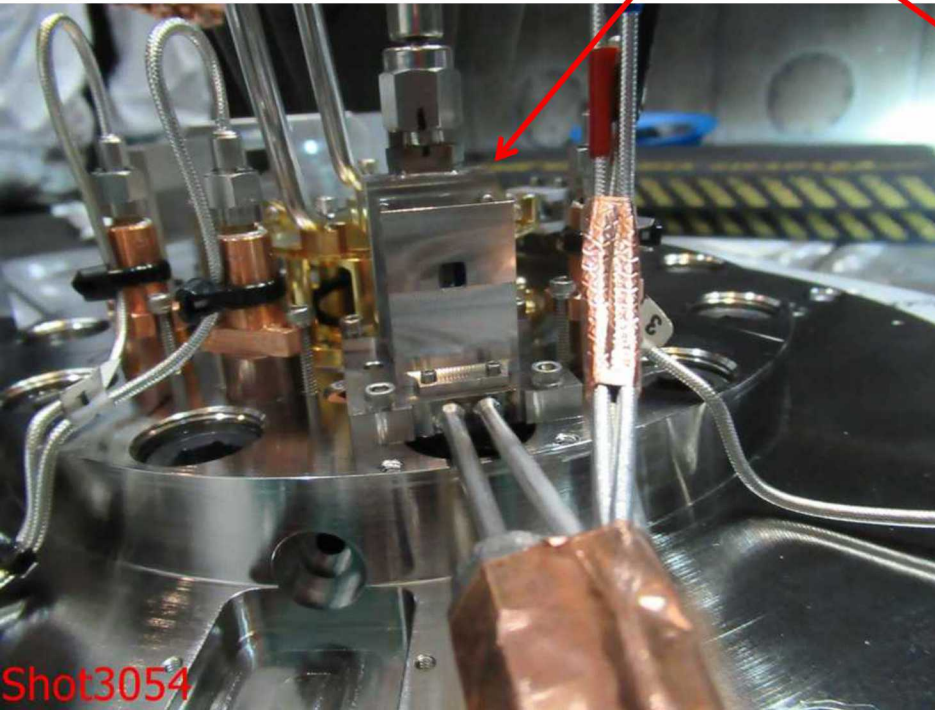
<b>Diagnostics</b>	<b>z3459</b>	<b>z3460</b>	<b>z3461</b>	<b>z3462</b>
LOS 330 TREX A time resolved TREX B time integrated	Ne gas cell 30 Torr	no gas filled - null test	no gas filled – null test	Ne gas filled 30 Torr

Each instrument record the x-ray emission from the Z-pinch dynamic hohlraum (ZPDH).

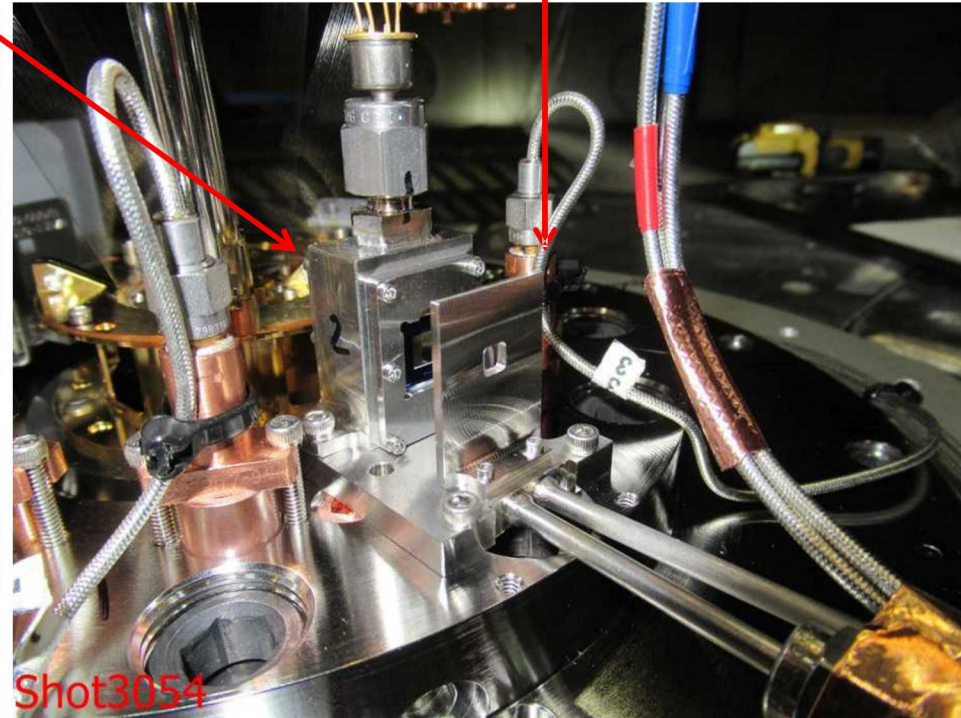
LOS 330 TREX 6A & B: recoded time resolved and time integrated absorption spectra from a radiatively heated Ne gas.

# LOS 330, Ne gas cell

gas cell



Limiting aperture

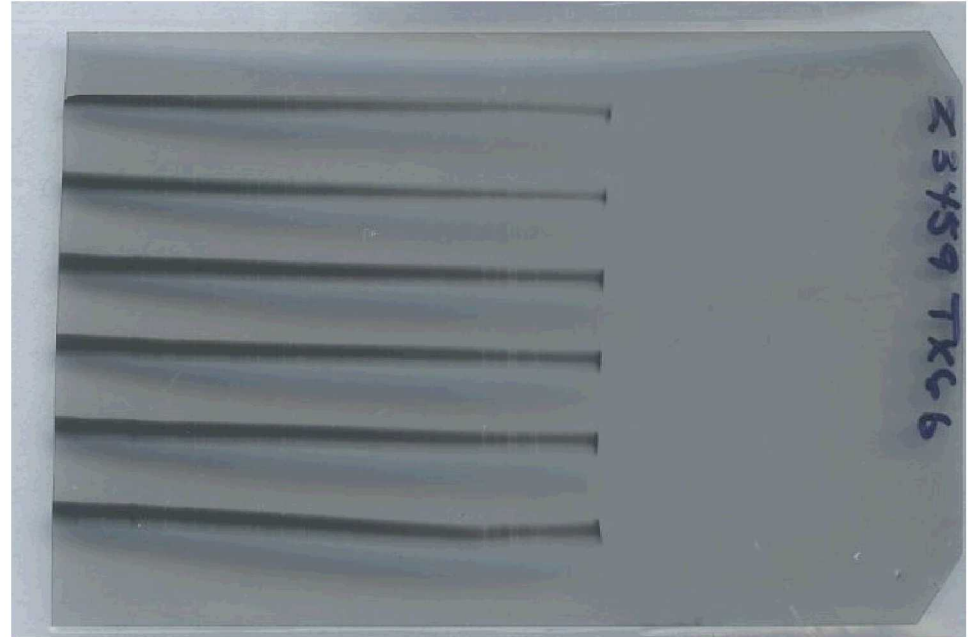


z3459

TREX6A



TREX6B

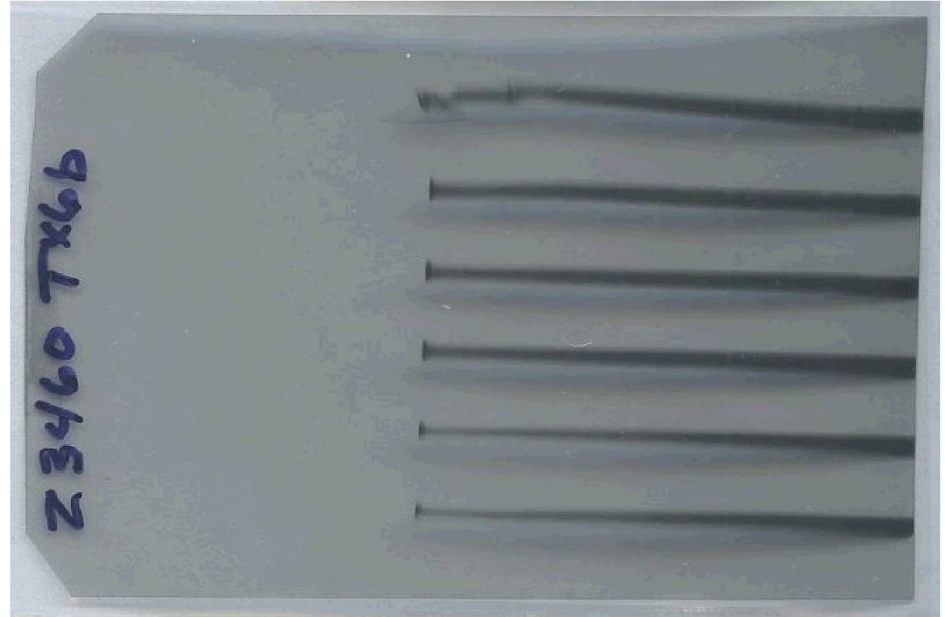


z3460

TREX6A



TREX6B



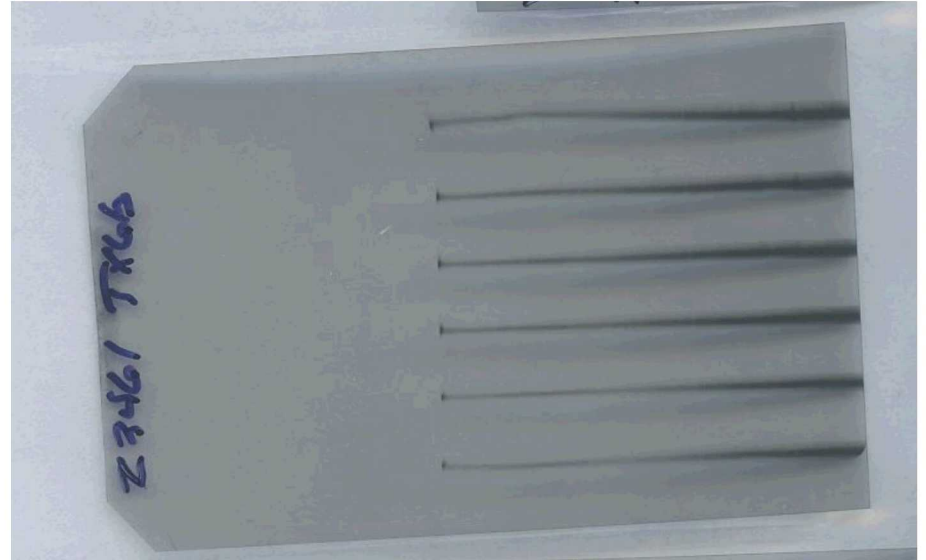


z3461

TREX6A



TREX6B



z3462

TREX6A



TREX6B

