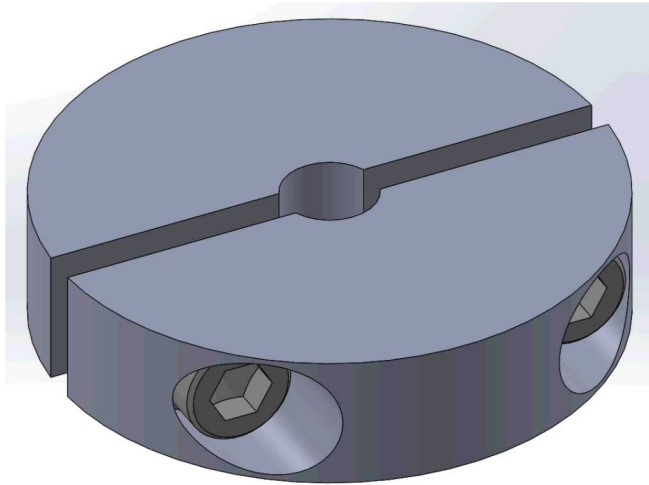


# What I mentioned back in November

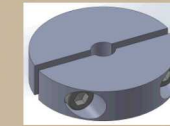
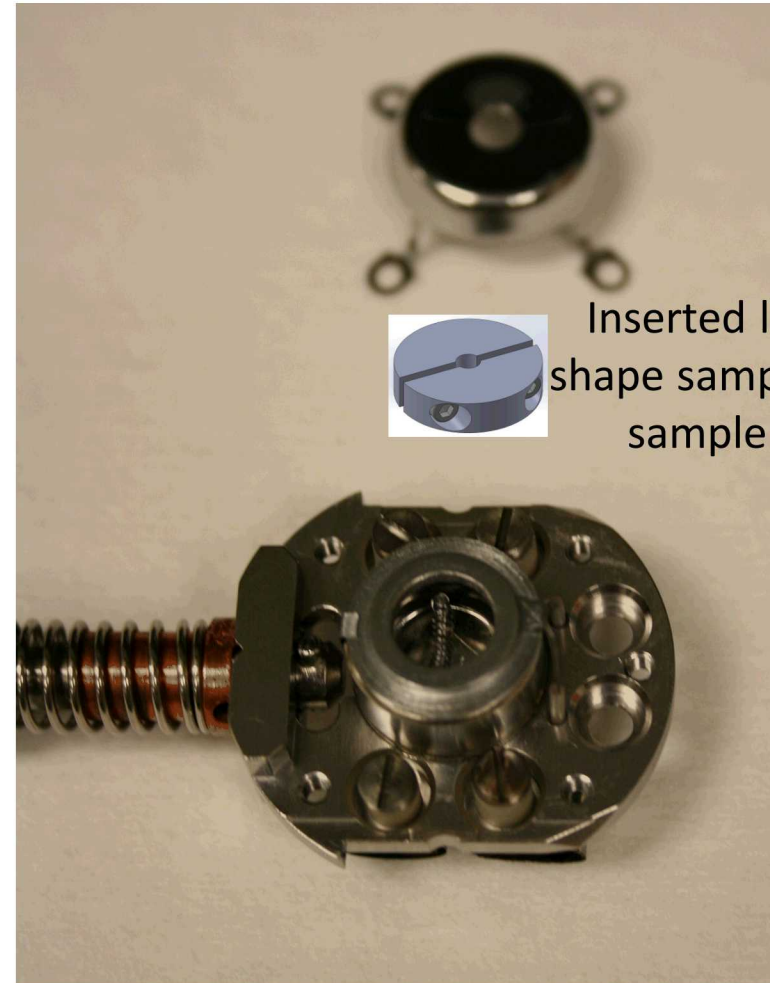
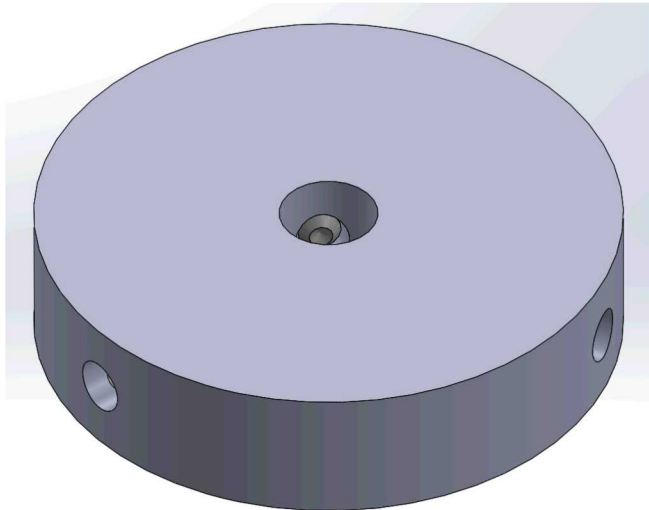
SAND2019-2107PE

Clamps the rod-shape sample

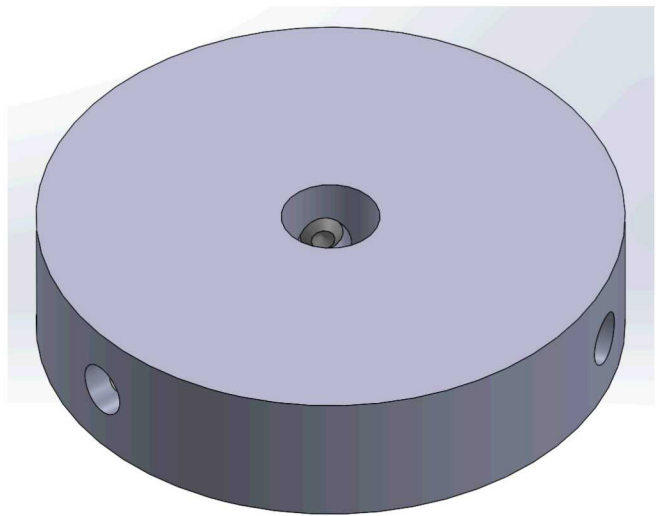
- Excess length of the carbon rod will be cleaved & removed



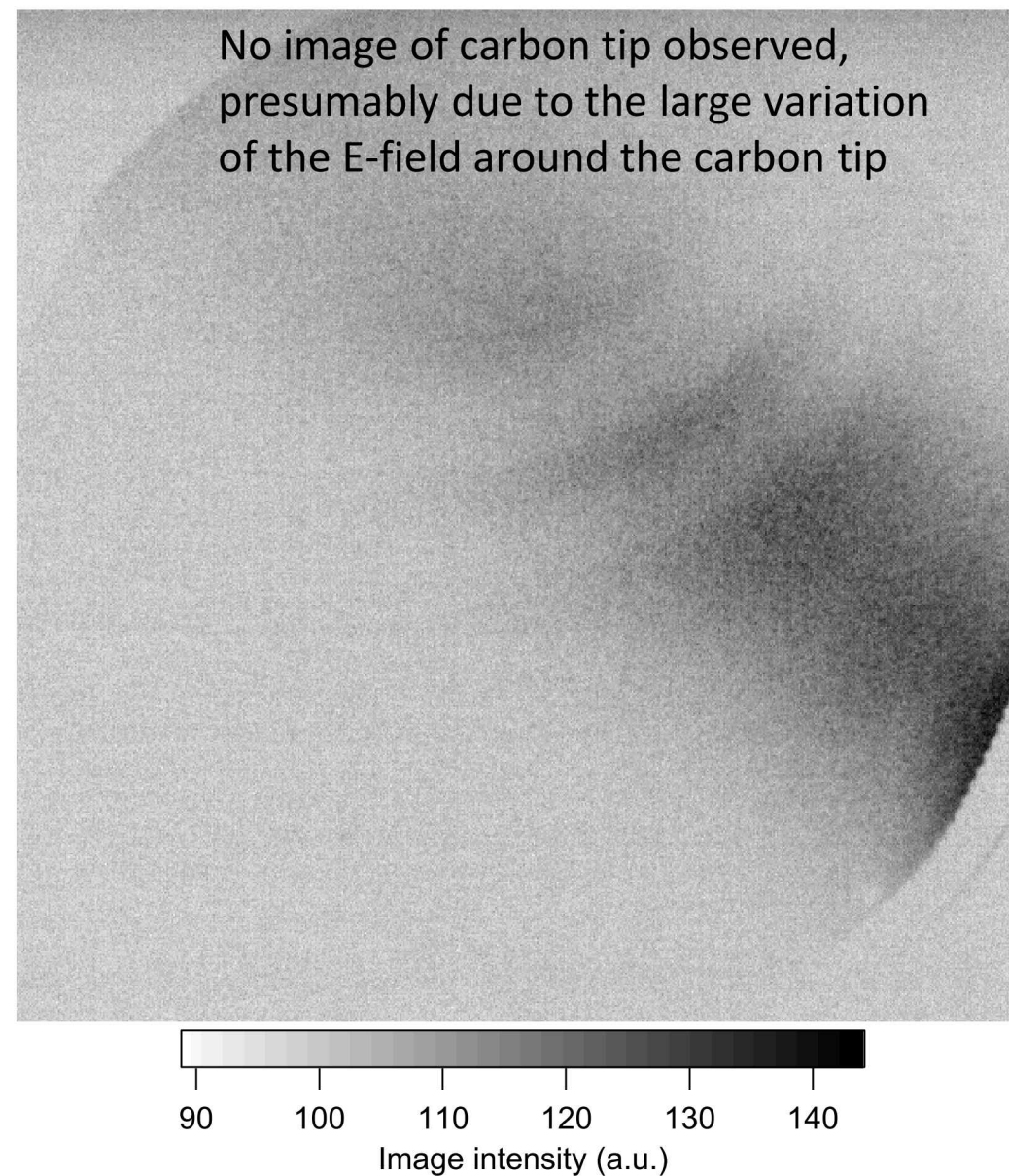
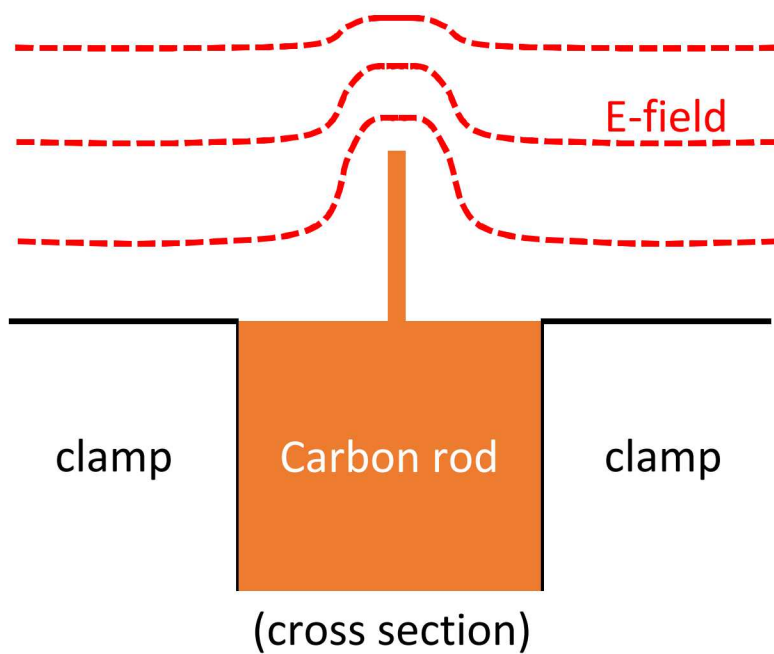
or

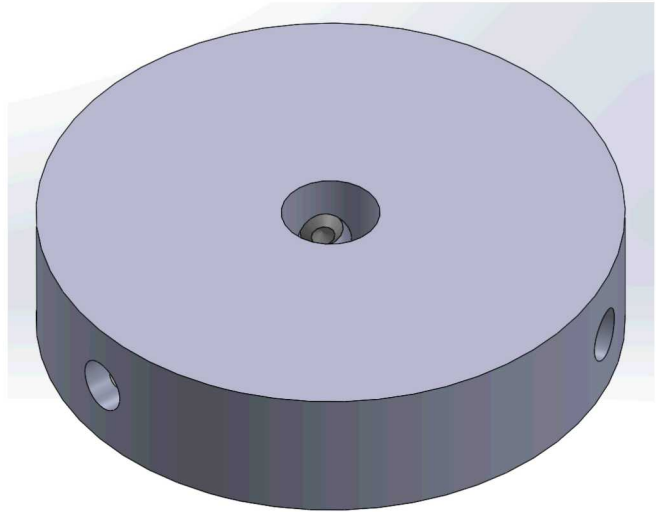


Inserted like a disk  
shape sample in LEEM  
sample holder

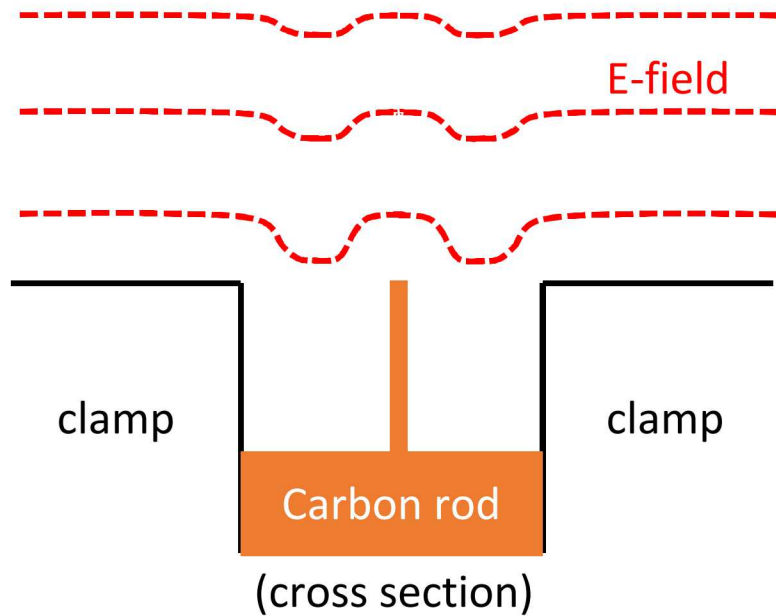


Carbon tip sticking out the clamp





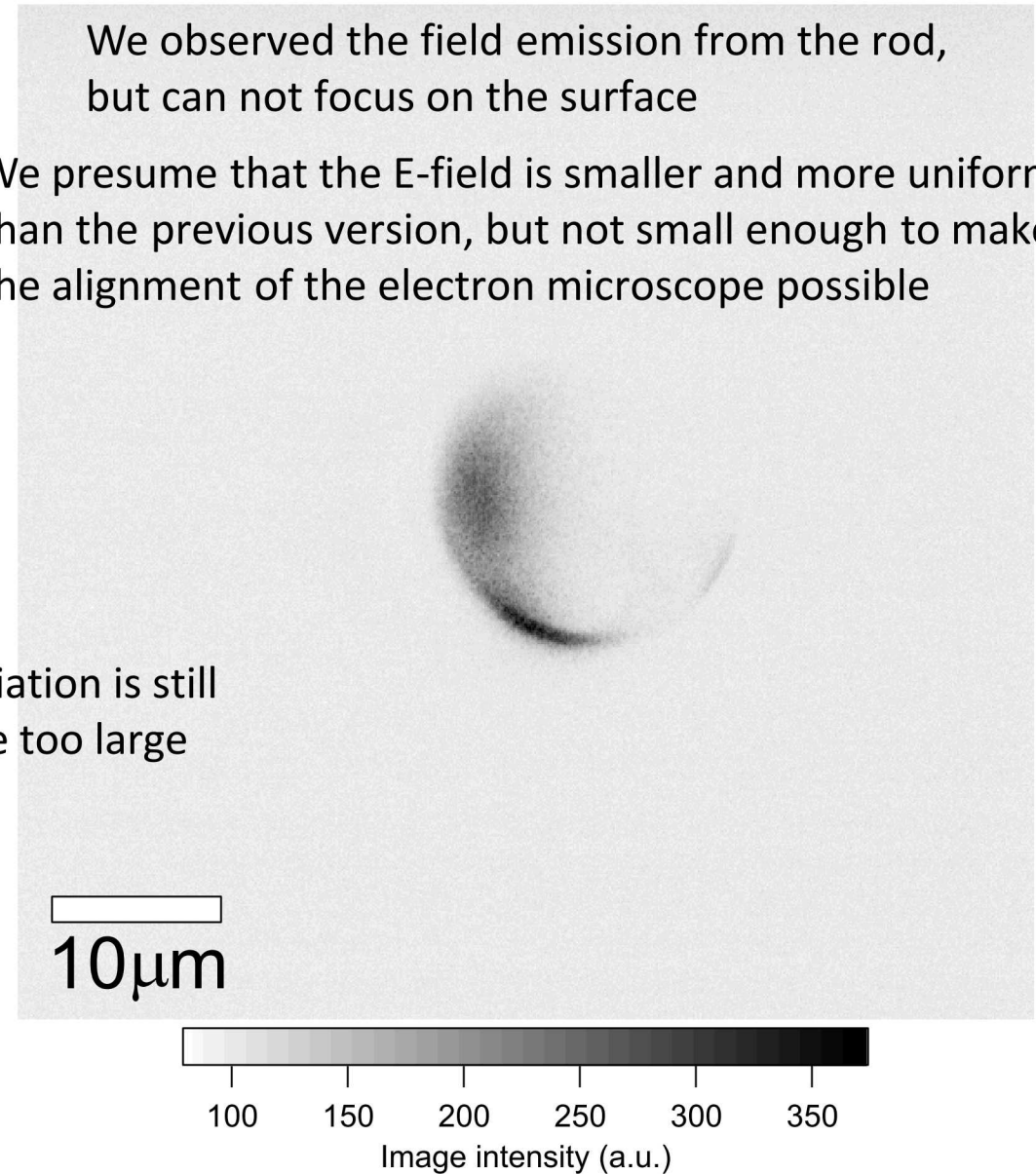
Carbon tip at the same height of the clamp



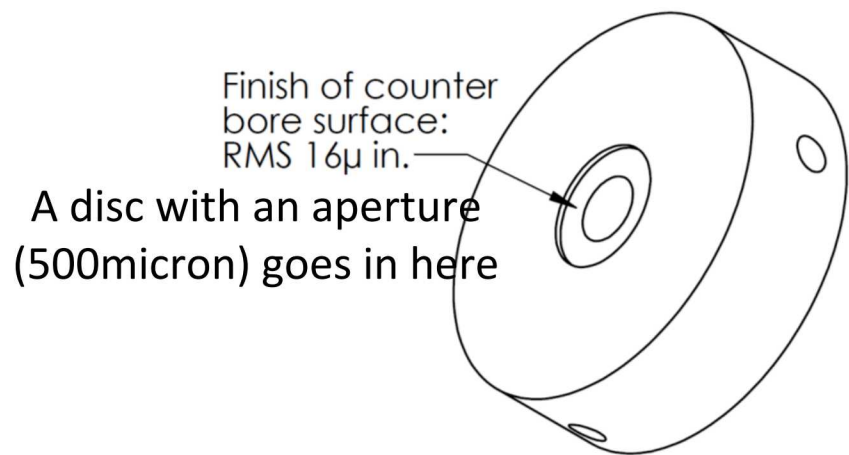
E-field variation is still likely to be too large

We observed the field emission from the rod, but can not focus on the surface

We presume that the E-field is smaller and more uniform than the previous version, but not small enough to make the alignment of the electron microscope possible







Carbon tip at the same height of the  
aperture disk

