

**NEVADA NATIONAL SECURITY SITE
2018 WASTE MANAGEMENT MONITORING REPORT
AREA 3 AND AREA 5 RADIOACTIVE WASTE
MANAGEMENT SITES**

October 2019

Prepared for:
U.S. Department of Energy
National Nuclear Security Administration
Nevada Field Office

Prepared by:
Mission Support and Test Services, LLC
Las Vegas, Nevada

DISCLAIMER

Reference herein to any specific commercial product, process, or service by trade name, trademark, manufacturer, or otherwise, does not necessarily constitute or imply its endorsement, recommendation, or favoring by the U.S. Government or any agency thereof.

Available for sale to the public, in paper, from:

U.S. Department of Commerce
National Technical Information Service
5301 Shawnee Road
Alexandria, VA 22312
Phone: 800.553.6847
Fax: 703.605.6900
E-mail: info@ntis.gov; customerservice@ntis.gov
Downloadable (no charge) at: <https://classic.ntis.gov/search/>

Available electronically (no charge) at: <http://www.osti.gov>

Available, in paper, for a processing fee to the U.S. Department of Energy and its contractors from:

U.S. Department of Energy
Office of Scientific and Technical Information
P.O. Box 62
Oak Ridge, TN 37831-0062
Phone: 865.576.8401
Fax: 865.576.5728
E-mail: reports@osti.gov

**NEVADA NATIONAL SECURITY SITE
2018 WASTE MANAGEMENT MONITORING REPORT
AREA 3 AND AREA 5 RADIOACTIVE WASTE
MANAGEMENT SITES**

October 2019

Prepared for:
U.S. Department of Energy
National Nuclear Security Administration
Nevada Field Office

Prepared by:
Mission Support and Test Services, LLC
Las Vegas, Nevada

THIS PAGE INTENTIONALLY LEFT BLANK

EXECUTIVE SUMMARY

Environmental monitoring data are collected at and around the Area 3 and Area 5 Radioactive Waste Management Sites (RWMSs) within the Nevada National Security Site (NNSS). This report summarizes the 2018 environmental data to provide an overall evaluation of RWMS performance and to support environmental compliance and performance assessment (PA) activities. Some of these data (e.g., radiation exposure, air, and groundwater) are presented in other reports (Mission Support and Test Services, LLC, 2018, 2019a, 2019b).

Direct radiation monitoring data indicate exposure levels at the Area 3 and Area 5 RWMSs are within the range of background levels measured at the NNSS. Slightly elevated exposure levels outside the Area 3 RWMS are attributed to nearby historical aboveground nuclear weapons tests. Air monitoring data at the Area 3 and Area 5 RWMSs show that tritium concentrations in water vapor and americium and plutonium concentrations in air particles are below Derived Concentration Standards for these radionuclides. Groundwater monitoring data indicate the groundwater in the uppermost aquifer beneath the Area 5 RWMS is not impacted by RWMS operations. Results of groundwater analysis from wells around the Area 5 RWMS are below established investigation levels. Leachate samples collected from the leachate collection system at the Area 5 mixed low-level waste disposal unit are below established contaminant regulatory limits. During 2018, precipitation at the Area 3 RWMS was 41% below average, and precipitation at the Area 5 RWMS was 39% below average. Water balance measurements indicate that evapotranspiration from the vegetated weighing lysimeter at the Area 5 RWMS dries the soil and prevents downward percolation of precipitation more effectively than evaporation as measured from the bare-soil weighing lysimeter. Vadose zone monitoring in the Area 3 and Area 5 RWMS soil covers shows no evidence of precipitation percolating through the covers to the waste. Moisture from precipitation did not percolate below 30 centimeters (1 foot [ft]) in the vegetated final cover on the U-3ax/bl disposal unit at the Area 3 RWMS during 2018. There was no drainage through 2.4 meters (8 ft) of soil as indicated from the Area 3 drainage lysimeters that received only natural precipitation. Thirteen percent of the applied precipitation and irrigation drained from the bare-soil drainage lysimeter at the Area 3 RWMS, which received three times the natural precipitation.

All 2018 monitoring data indicate that the Area 3 and Area 5 RWMSs are performing within expectations of the model and parameter assumptions for the facilities' PAs.

THIS PAGE INTENTIONALLY LEFT BLANK

TABLE OF CONTENTS

Executive Summary	iii
List of Acronyms and Abbreviations	vii
1.0 Introduction	1-1
2.0 Site Descriptions	2-1
2.1 Area 3 RWMS	2-1
2.2 Area 5 RWMS	2-3
2.3 Hydrologic Conceptual Models of the Area 3 RWMS and Area 5 RWMS	2-3
3.0 Project Description	3-1
3.1 Area 3 RWMS	3-1
3.2 Area 5 RWMS	3-2
4.0 Environmental Monitoring Data.....	4-1
4.1 Types of Environmental Monitoring Data	4-1
4.2 Radiation Exposure Data.....	4-4
4.3 Air Monitoring Data.....	4-7
4.3.1 Tritium.....	4-7
4.3.2 Particulates.....	4-8
4.3.3 Radon.....	4-10
4.4 Groundwater Monitoring Data.....	4-12
4.4.1 Groundwater Monitoring at the Area 5 RWMS Pilot Wells.....	4-12
4.4.2 Leachate Monitoring at P18 and P25	4-13
4.5 Meteorology Monitoring Data.....	4-15
4.5.1 Air Temperature.....	4-15
4.5.2 Relative Humidity.....	4-16
4.5.3 Barometric Pressure	4-18
4.5.4 Wind Speed and Wind Direction	4-18
4.5.5 Precipitation.....	4-21
4.5.6 Reference Evapotranspiration.....	4-21
4.6 Vadose Zone Monitoring Data	4-24
4.6.1 Monitoring Strategy.....	4-24
4.6.2 Area 5 Weighing Lysimeter Facility	4-24
4.6.3 Automated Waste Cover Monitoring System.....	4-28
4.6.4 Area 3 Drainage Lysimeter Facility	4-32
4.7 Waste Cover Subsidence	4-35
4.8 Biota Monitoring Data	4-36
5.0 Conclusion	5-1
6.0 References.....	6-1
Distribution List	D-1

LIST OF FIGURES

Figure 2-1. Location of the Area 3 and Area 5 RWMSs	2-2
Figure 2-2. Vadose Zone Conceptual Models of the Area 3 and Area 5 RWMSs	2-5
Figure 3-1. Monitoring Locations at the Area 3 RWMS.....	3-2
Figure 3-2. Monitoring Locations at the Area 5 RWMS.....	3-3
Figure 4-1. Annual Radiation Exposure Rates at the Area 3 RWMS	4-5
Figure 4-2. Quarterly Average Daily Exposure Rates at the Area 3 RWMS.....	4-6
Figure 4-3. Quarterly Average Daily Exposure Rates at the Area 5 RWMS.....	4-6
Figure 4-4. Tritium Concentration in Air at the Area 3 and Area 5 RWMSs	4-8
Figure 4-5. Concentration of ²⁴¹ Am in Air at the Area 3 and Area 5 RWMSs	4-9
Figure 4-6. Concentration of ²³⁸ Pu in Air at the Area 3 and Area 5 RWMSs	4-9
Figure 4-7. Concentration of ²³⁹⁺²⁴⁰ Pu in Air at the Area 3 and Area 5 RWMSs	4-10
Figure 4-8. Radon Flux Results in Area 3.....	4-11
Figure 4-9. Radon Flux Results in Area 5.....	4-11
Figure 4-10. Groundwater Elevations at the Area 5 Pilot Wells	4-13
Figure 4-11. Leachate Volume Pumped from Cell 18 Primary Sump.....	4-14
Figure 4-12. Daily Maximum and Minimum Air Temperature at the Area 3 & Area 5 RWMSs.....	4-16
Figure 4-13. Daily Average Relative Humidity at the Area 3 and Area 5 RWMSs.....	4-17
Figure 4-14. Daily Average Atmospheric Water Density at the Area 3 and Area 5 RWMSs ..	4-17
Figure 4-15. Average Barometric Pressure at the Area 3 and Area 5 RWMSs.....	4-18
Figure 4-16. Daily Wind Speed at the Area 3 RWMS	4-19
Figure 4-17. Daily Wind Speed at the Area 5 RWMS	4-19
Figure 4-18. Wind Rose Diagram for the Area 3 RWMS	4-20
Figure 4-19. Wind Rose Diagram for the Area 5 RWMS	4-20
Figure 4-20. Precipitation at the Area 3 RWMS.....	4-22
Figure 4-21. Precipitation at the Area 5 RWMS.....	4-22
Figure 4-22. Historical Precipitation Record for Buster-Jangle Y and Area 3 RWMS.....	4-23
Figure 4-23. Historical Precipitation Record for Well 5B and Area 5 RWMS.....	4-23
Figure 4-24. Weighing Lysimeter Data from January 1995 thru December 2018.....	4-25
Figure 4-25. Precipitation, ET, E, and Storage for the Weighing Lysimeters	4-27
Figure 4-26. Monthly Precipitation, E, and ET	4-27
Figure 4-27. Soil Water Content in the Cell 5 Floor	4-28
Figure 4-28. Soil Water Content in the 92-Acre Area Cover at Cell 5N.....	4-29
Figure 4-29. Temperatures above an RTG at Cell 5.....	4-30
Figure 4-30. Soil Volumetric Water Content in the U-3 ax/bl Cover	4-31
Figure 4-31. Cumulative Drainage from the Drainage Lysimeters	4-33
Figure 4-32. Soil Water Storage in the Drainage Lysimeters	4-35

LIST OF TABLES

Table 4-1. Environmental Monitoring at the Area 3 RWMS	4-2
Table 4-2. Environmental Monitoring at the Area 5 RWMS	4-3
Table 4-3. Investigation Levels and Results from 2018 Groundwater Monitoring	4-12
Table 4-4. Weighing Lysimeters Percent Cover	4-25
Table 4-5. Area 3 Drainage Lysimeter Treatments in 2018	4-33
Table 4-6. Area 3 Drainage Lysimeter Percent Cover in 2018.....	4-34

LIST OF ACRONYMS AND ABBREVIATIONS

ac	acre(s)
AGL	above ground level
Am	americium
AMSL	above mean sea level
ARL/SORD	Air Resources Laboratory, Special Operations and Research Division
BJY	Buster-Jangle Y
BN	Bechtel Nevada
°C	degree(s) Celsius
CAU	Corrective Action Unit
CFR	Code of Federal Regulations
cm	centimeter(s)
DCS	Derived Concentration Standard
DoD	U.S. Department of Defense
DOE	U.S. Department of Energy
DRI	Desert Research Institute
E	evaporation
ET	evapotranspiration
ET _{ref}	reference evapotranspiration
°F	degree(s) Fahrenheit
ft	foot (feet)
ft ³	cubic foot (feet)
GCD	greater confinement disposal
g/m ³	gram(s) per cubic meter
ha	hectare(s)
HDPE	high-density polyethylene
IL	investigation level
in.	inch(es)
km	kilometer(s)
kPa	kilopascal(s)
LLW	low-level waste
m	meter(s)
m ³	cubic meter(s)
m/s	meter(s) per second
MEDA	Meteorological Data Acquisition
mg/L	milligram(s) per liter
mi	mile(s)
MLLW	mixed low-level waste

2018 Waste Management Monitoring Report
Area 3 and Area 5 Radioactive Waste Management Sites

mmho/cm	millimho(s) per centimeter
mph	mile(s) per hour
mR	milliroentgen(s)
mrem	millirem(s)
mrem/yr	millirem(s) per year
mR/yr	milliroentgen(s) per year
MSTS	Mission Support and Test Services, LLC
NNSS	Nevada National Security Site
NSTec	National Security Technologies, LLC
PA	performance assessment
PCB	polychlorinated biphenyl
pCi/L	picocurie(s) per liter
pCi/m ² /s	picocurie(s) per square meter per second
PSI	pound(s) per square inch
PST	Pacific Standard Time
PSU	Portland State University
Pu	plutonium
RCRA	<i>Resource Conservation and Recovery Act</i>
RREMP	Routine Radiological Environmental Monitoring Plan
RTD	resistance temperature detector
RTG	radioisotope thermoelectric generator
RWMS	Radioactive Waste Management Site
SC	specific conductance
TDR	time-domain reflectometry
TLD	thermoluminescent dosimeter
TOC	total organic carbon
TOX	total organic halides
TRC	Tribal Revegetation Committee
TTR	Tonopah Test Range
VWC	volumetric water content

1.0 INTRODUCTION

This document summarizes calendar year 2018 waste management environmental monitoring data for the Area 3 and Area 5 Radioactive Waste Management Sites (RWMSs).

Characterization reports for the Area 3 RWMS (National Security Technologies, LLC [NSTec], 2007a) and the Area 5 RWMS (Bechtel Nevada [BN] 2006) provide descriptions of each RWMS including location, setting, waste disposal operations, and monitoring programs. These reports also provide brief summaries of characterization and monitoring data. The *Closure Plan for the Area 3 Radioactive Waste Management Site at the Nevada Test Site* (NSTec 2007b) and the *Closure Plan for the Area 5 Radioactive Waste Management Site at the Nevada Test Site* (NSTec 2008) identify the regulatory requirements and describe the intended approach for closing and monitoring the RWMSs after waste disposal is finished.

This report summarizes environmental data, as briefly described below:

- Direct radiation monitoring to confirm that RWMS activities do not result in significant exposure above background levels
- Air monitoring to confirm that RWMS activities do not result in significant radionuclide concentrations above background levels and to confirm compliance with National Emission Standards for Hazardous Air Pollutants
- Groundwater monitoring, as required by U.S. Environmental Protection Agency regulations and U.S. Department of Energy (DOE) orders, to assess the water quality of the aquifer beneath the Area 5 RWMS and to confirm that Area 5 RWMS activities are not affecting the aquifer
- Vadose zone monitoring to assess the water balance at the RWMSs, confirm the assumptions made in performance assessments (PAs) (including no downward pathway), and evaluate the performance of waste covers
- Subsidence monitoring to assess waste cover stability
- Biota monitoring to assess vegetated final covers on closed waste cells and to evaluate the upward biological pathway for radionuclides

These data are collected by Mission Support and Test Services, LLC (MSTS), as required by various DOE orders and requirements from the Code of Federal Regulations (CFR). For a detailed description of these regulatory drivers, refer to the closure plans for the Area 3 RWMS and the Area 5 RWMS (NSTec 2007b, 2008). The following regulatory drivers exist to mitigate risk to the public and the environment:

- DOE O 435.1, "Radioactive Waste Management"
- DOE O 436.1, "Departmental Sustainability"
- DOE O 458.1, "Radiation Protection of the Public and the Environment"
- 40 CFR 61, "National Emission Standards for Hazardous Air Pollutants"
- 40 CFR 264, "Standards for Owners and Operators of Hazardous Waste Treatment, Storage, and Disposal Facilities"
- 40 CFR 265, "Interim Status Standards for Owners and Operators of Hazardous Waste Treatment, Storage, and Disposal Facilities"

2018 Waste Management Monitoring Report
Area 3 and Area 5 Radioactive Waste Management Sites

Environmental monitoring data are collected and analyzed as described in Quality Assurance, Analysis, and Sampling Plans, which can be found in the *Nevada Test Site Routine Radiological Environmental Monitoring Plan* (RREMP) (BN 2003). The RREMP was written with a Data Quality Objectives-driven process to identify the types and methods for collection of technically defensible environmental monitoring data.

2.0 SITE DESCRIPTIONS

2.1 AREA 3 RWMS

The Area 3 RWMS is located on Yucca Flat within the Nevada National Security Site (NNSS). Yucca Flat is an elongated, sediment-filled basin that trends roughly north-south. The north-south long axis extends approximately 27 kilometers (km) (17 miles [mi]), and the west-east short axis extends approximately 16 km (9.9 mi). Yucca Flat is bounded by Quartzite Ridge and Rainier Mesa on the north, the Halfpint Range on the east, Massachusetts Mountain and CP Hills on the south, and Mine Mountain and the Eleana Range on the west (Figure 2-1). The Yucca Flat basin slopes from the north at an elevation of approximately 1,402 meters (m) (4,600 feet [ft]) above mean sea level (AMSL) to the south toward Yucca Playa, with the lowest part of the basin at an elevation of approximately 1,189 m (3,901 ft) AMSL. The Area 3 RWMS elevation is 1,223 m (4,012 ft). Yucca Flat was one of several primary underground nuclear test areas, and much of the length of the valley is marked with subsidence craters (NSTec 2007a).

The unsaturated zone at the Area 3 RWMS is estimated to be approximately 488 m (1,600 ft) thick (BN 1998), and the water table is assumed to occur in Tertiary tuff. The alluvium thickness is estimated to be between 370 and 460 m (1,214 and 1,509 ft) (BN 2005a).

Based on a 21-year record from 1981 to 2001 at location Buster-Jangle Y (BJY) (4.5 km [2.8 mi] northwest of the Area 3 RWMS), typical daily air temperatures vary from -3 degrees Celsius (°C) (26 degrees Fahrenheit [°F]) to 12°C (54°F) during the winter months of December, January, and February and from 14°C (57°F) to 34°C (94°F) during the summer months of June, July, and August. The average winter temperature during this period was 4°C (40°F), and the average summer temperature was 24°C (75°F). During this 21-year period, the maximum observed temperature was 43.3°C (110°F), and the minimum observed temperature was -20°C (-4°F). Average relative humidity during this period was 53% at 4:00 Pacific Standard Time (PST), 28% at 10:00 PST, 26% at 16:00 PST, and 45% at 22:00 PST. January had the highest relative humidity of 67% at 4:00 PST, 42% at 10:00 PST, 43% at 16:00 PST, and 62% at 22:00 PST. July had the lowest relative humidity of 40% at 4:00 PST, 19% at 10:00 PST, 17% at 16:00 PST, and 30% at 22:00 PST. The maximum wind gust observed at BJY during this 21-year period was 29.3 meters per second (m/s) (65.6 miles per hour [mph]) in 1987 (Soule 2006).

The average annual precipitation at BJY during the 58-year period from 1961 through 2018 is 15.9 centimeters (cm) (6.26 inches [in.]). Typically, low-intensity, longer duration storms occur during the winter, and thunderstorms occur during the late summer. February has the most precipitation, and June has the least precipitation (Soule 2006). Annual reference evapotranspiration (ET_{ref}) at the Area 3 RWMS, calculated using local meteorology data, is approximately 10 times the annual average precipitation (Desotell et al. 2007).

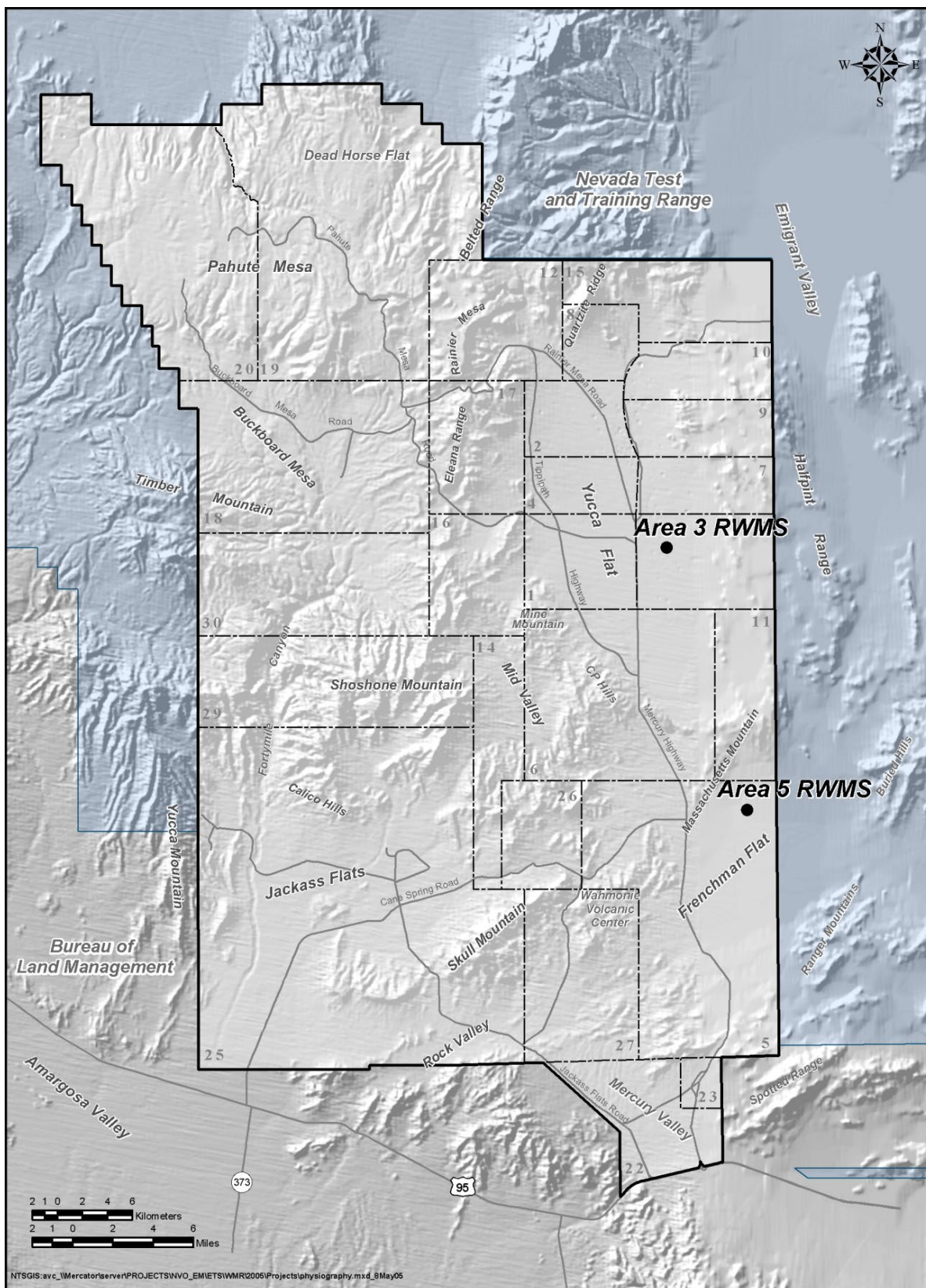


Figure 2-1. Location of the Area 3 and Area 5 RWMSs

2.2 AREA 5 RWMS

The Area 5 RWMS is located on northern Frenchman Flat at the juncture of three coalescing alluvial fan piedmonts (Snyder et al. 1995). Frenchman Flat is a closed intermontane basin located in the southeastern portion of the NNSS. Frenchman Flat is bounded by Massachusetts Mountain and the Halfpint Range on the north, the Buried Hills on the east, the Spotted Range on the south, and the Wahmonie Volcanic Center on the west (Figure 2-1). The valley floor slopes gently toward a central playa (BN 2006). Ground surface elevations range from 938 m (3,080 ft) AMSL at the playa to over 1,220 m (4,003 ft) AMSL in the nearby surrounding mountains. The Area 5 RWMS elevation is 962 m (3,156 ft).

The thickness of the unsaturated zone at the Area 5 RWMS is 235.9 m (773.9 ft) at the southeast corner of the RWMS (Well UE5PW-1), 256.5 m (841.5 ft) at the northeast corner (Well UE5PW-2), and 271.6 m (891.1 ft) to the northwest of the RWMS (Well UE5PW-3). Wells UE5PW-1 and UE5PW-2 penetrate only alluvium, while Well UE5PW-3 encounters tertiary tuff at a depth of approximately 189 m (620 ft) (BN 2005b). The water table beneath the Area 5 RWMS is extremely flat with flow velocities of less than 0.10 m per year (0.33 ft per year). The average groundwater elevation measured at these wells in 2018 was 733.5 m (2,407 ft) AMSL.

Based on a 21-year record from 1981 to 2001 at location Well 5B (6.4 km [4.0 mi] south of the Area 5 RWMS), typical daily air temperatures vary from -4°C (25°F) to 14°C (57°F) during the winter months of December, January, and February and from 15°C (59°F) to 37°C (99°F) during the summer months of June, July, and August. The average winter temperature during this period was 5°C (41°F), and the average summer temperature was 26°C (79°F). During this 21-year period, the maximum observed temperature was 46°C (115°F) and the minimum observed temperature was -21°C (-6°F). Average relative humidity during this period was 46% at 4:00 PST, 25% at 10:00 PST, 20% at 16:00 PST, and 37% at 22:00 PST. January had the highest relative humidity of 65% at 4:00 PST, 46% at 10:00 PST, 34% at 16:00 PST, and 58% at 22:00 PST. June had the lowest relative humidity of 32% at 4:00 PST, 14% at 10:00 PST, 12% at 16:00 PST, and 21% at 22:00 PST. The maximum wind gust observed at Well 5B during this 21-year period was 29.8 m/s (66.7 mph) in 1988 (Soule 2006).

The average annual precipitation at Well 5B during the 55-year period from 1964 through 2018 is 122 mm (4.80 in.). Typically, low-intensity, longer duration storms occur during the winter, and thunderstorms occur during the late summer. February has the most precipitation, and June has the least precipitation (Soule 2006). Annual ET_{ref} at the Area 5 RWMS, calculated using local meteorology data, is approximately 12 times the annual average precipitation (Desotell et al. 2006).

Areas 3 and 5 are similar, except for slight differences in air temperature, precipitation, and soil texture. Area 3 receives approximately 31% more rainfall than Area 5, and the annual average temperature at Area 3 is about 2°C (4°F) cooler than at Area 5.

2.3 HYDROLOGIC CONCEPTUAL MODELS OF THE AREA 3 RWMS AND AREA 5 RWMS

Climate and vegetation strongly control the water movement in the upper few meters of alluvium at both RWMSs. The magnitude and direction of both liquid and vapor fluxes vary seasonally and often daily. Except for periods following precipitation events, water content values in the near-surface are quite low. Below the dynamic near-surface is a region where relatively steady

upward water movement is occurring. In this region of slow upward flow, stable isotope compositions of soil water confirm that evaporation (E) is the dominant process (Tyler et al. 1996). The upward flow region is located at depths from approximately 3 to 49 m (10 to 161 ft) in Area 3, and from approximately 3 to 40 m (10 to 131 ft) in Area 5. Below the upward flow region, water potential measurements indicate the existence of a static region. The hydraulic gradient in the static region is zero. The static region is located between approximately 49 and 119 m (161 to 390 ft) deep in Area 3, and between approximately 40 and 90 m (131 to 295 ft) deep in Area 5 (Shott et al. 1997, 1998). In the static region, essentially no vertical liquid flow is currently occurring. Below the static region, flow is steady and downward due to gravity (Figure 2-2). Lysimeter water balance measurements show the arid climate and native vegetation at the NNSS provide a natural sustainable system to prevent transport of contaminants from the RWMSs through the vadose zone to groundwater. Transport by infiltration and percolation of present day precipitation at the RWMSs is prevented. The native desert vegetation is adapted to extract moisture from very dry soils and maintains negative matric potentials at the base of the root zone, effectively buffering the deep vadose zone from episodic precipitation events at the surface. The very negative matric potential at the base of the root zone intercepts almost all infiltration from precipitation and draws moisture upward from the vadose zone below the root zone. This system is sustainable because it does not rely on engineered features and mimics the stable landscapes and the lack of groundwater recharge with the current conditions surrounding the RWMSs. The system depends on establishing native vegetation in the covers above the waste cells and a stable climate (Hudson et al. 2015). Stable isotope compositions of soil water from these depths indicate that infiltration into this zone occurred under cooler past climatic conditions (Tyler et al. 1996). If water were to migrate below the current static zones, movement to the groundwater would be extremely slow due to the low water content of the alluvium. Estimates of travel time to the groundwater (assuming zero upward flux), based on hydraulic characteristics of the alluvium, and assuming that current conditions would still apply, are in excess of 500,000 years in Area 3 (Levitt and Yucel 2002) and 50,000 years in Area 5 (Shott et al. 1998).

Based on the results of extensive research, field studies, modeling efforts, and monitoring data, which are summarized in the Area 3 and Area 5 PAs (Shott et al. 1997, 1998; Levitt et al. 1999; Levitt and Yucel 2002; Desotell et al. 2006; Hudson et al. 2015), groundwater recharge is not occurring under current climatic conditions at the RWMSs. Studies indicate that under bare-soil conditions, such as those found at the operational waste cell covers, some drainage may eventually occur through the waste covers into the waste zone. This drainage is estimated to be about 8% of the annual rainfall at Area 5, based on one-dimensional modeling results (Desotell et al. 2006).

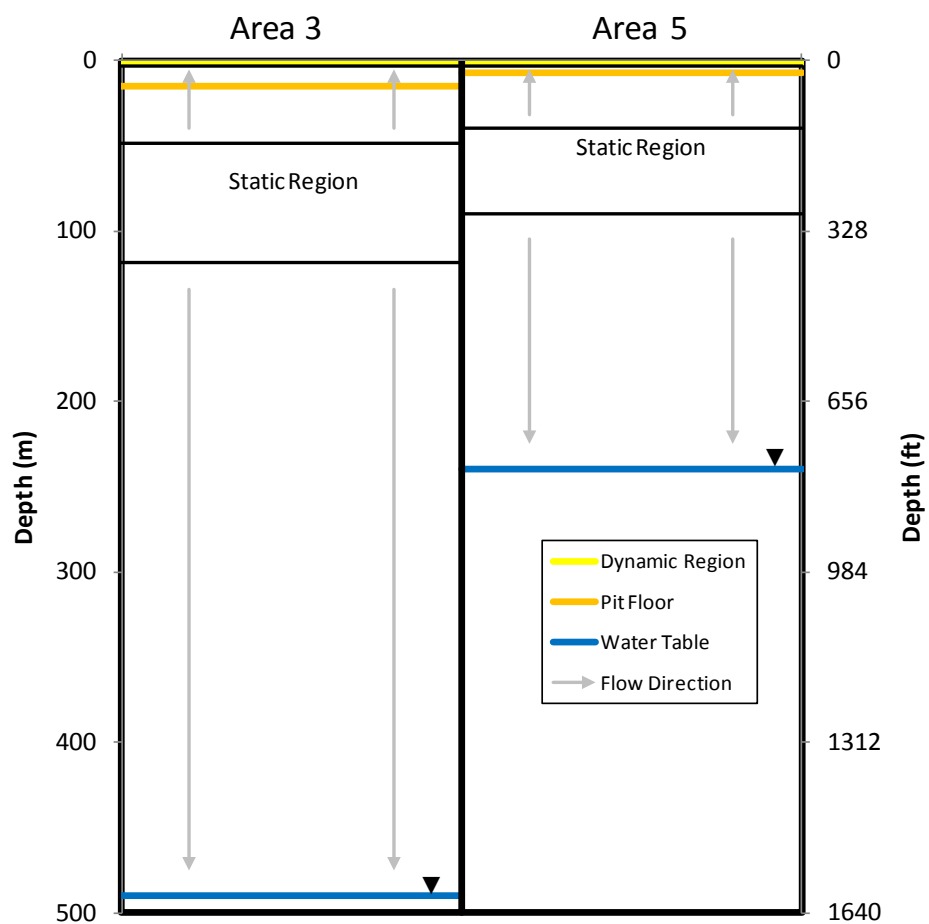


Figure 2-2. Vadose Zone Conceptual Models of the Area 3 and Area 5 RWMSs

THIS PAGE INTENTIONALLY LEFT BLANK

3.0 PROJECT DESCRIPTION

The Area 3 and Area 5 RWMSs are designed and operated for the disposal of radioactive low-level waste (LLW) and mixed low-level waste (MLLW) that is generated at the NNSS, from DOE offsite locations, and from other approved offsite generators.

3.1 AREA 3 RWMS

The Area 3 RWMS covers approximately 51 hectares (ha) (126 acres [ac]). The area enclosed by a fence is used for waste disposal operations and covers approximately 49 ha (121 ac). The Area 3 RWMS includes seven subsidence craters from underground nuclear testing: U-3ax, U-3bl, U-3ah, U-3at, U-3bh, U-3az, and U-3bg. At the time of formation, these seven craters ranged from 122 to 177 m (400 to 581 ft) in diameter and from 14 to 32 m (46 to 105 ft) in depth (Plannerer 1996). Five of these subsidence craters were developed into three waste disposal units. Alluvium between craters U-3ax and U-3bl and between craters U-3ah and U-3at was excavated to form two large disposal units (U-3ax/bl and U-3ah/at). Crater U-3bh is also used for waste disposal. Craters U-3az and U-3bg are not used for waste disposal (Figure 3-1).

U-3bh and U-3ah/at can accept unclassified LLW. U-3bh was originally used for disposal of contaminated soil from the Tonopah Test Range (TTR) in 1997 and was later used for disposal of waste from other approved generators. Disposal in U-3ah/at began in 1988 and has been used for disposal of bulk LLW from the NNSS and approved offsite generators. U-3bh and U-3ah/at were covered with operational covers and placed in standby mode in 2006. In October 2018, waste disposal resumed at U-3ah/at with disposal of contaminated soil and debris from TTR.

U-3ax/bl received unclassified LLW and potential MLLW from 1968 to 1987. Disposal in the U-3ax crater began in the late 1960s, and disposal in U-3bl began in 1984. Waste forms consisted primarily of contaminated soil and scrap metal, with some construction debris, equipment, and containerized waste. U-3ax/bl was closed in 2000 by constructing an engineered, monolayer, vegetated, evapotranspiration (ET) cover under the *Federal Facility Agreement and Consent Order*, a three-party agreement between the Nevada Division of Environmental Protection, DOE, and the U.S. Department of Energy. U-3ax/bl is identified as Corrective Action Unit (CAU) 110 and is permanently closed under the *Resource Conservation and Recovery Act* (RCRA) as a hazardous waste landfill. The RCRA-equivalent cover is constructed of native alluvium at least 2.4 m (8 ft) thick planted with native plants. For details of the closure of CAU 110, refer to U.S. Department of Energy, Nevada Operations Office (2000, 2001) and BN (2001).

For a detailed description of the facilities at the Area 3 RWMS, refer to Shott et al. (1997) and NSTec (2007a).

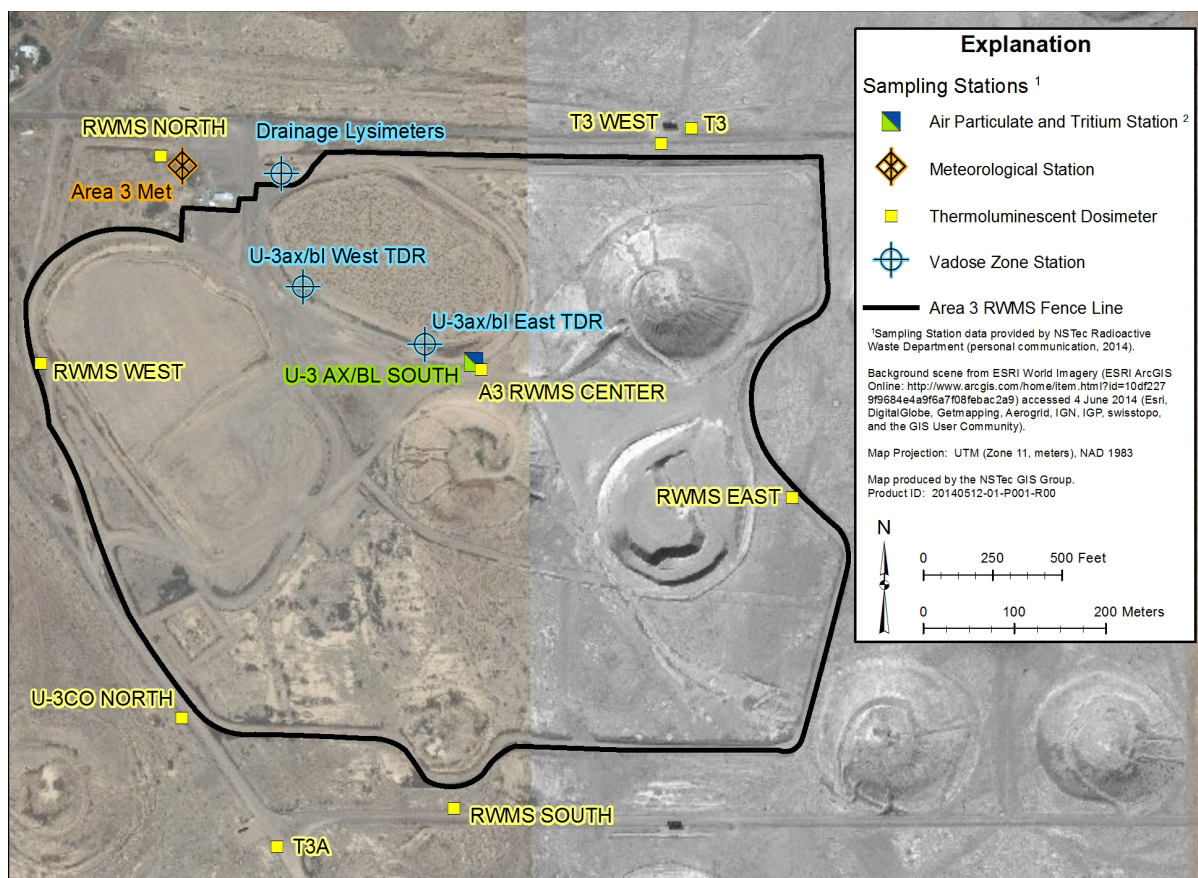


Figure 3-1. Monitoring Locations at the Area 3 RWMS

3.2 AREA 5 RWMS

The Area 5 RWMS (NNSS Area 5A) covers approximately 300 ha (741 ac) with approximately 100 ha (247 ac) enclosed by a fence and used for waste disposal operations. This area consists of 40 disposal cells (pits and trenches) and 13 greater confinement disposal (GCD) boreholes (Figure 3-2). The excavated disposal cells range in depth from 4.6 to 15 m (15 to 49 ft). Cell 18 (P18) and Cell 25 (P25) were built with RCRA-compliant double liners and leachate collection systems over geosynthetic clay liners. All other cells are unlined. GCD boreholes are 36 m (118 ft) deep and 3 to 3.7 m (10 to 12 ft) in diameter uncased boreholes.

Waste disposal has occurred at the Area 5 RWMS since the early 1960s. Initially, LLW and MLLW from the demolition of nuclear test sites and facilities at the NNSS were buried at the Area 5 RWMS. In 1978, DOE formally established the Area 5 RWMS, and it became a disposal site for other DOE facilities. During the 1980s, the GCD boreholes were constructed and received high-specific-activity LLW and transuranic waste.

Currently, the disposal units receive sealed waste containers. Containers are stacked to approximately 1.2 m (4 ft) below original grade, and soil backfill is pushed over the containers in a single layer to a thickness of approximately 2.4 m (8 ft) thick. For a detailed description of the facilities at the Area 5 RWMS, refer to Shott et al. (1998). For further descriptions of pits, trenches, and GCD boreholes, refer to BN (2005b, 2006) and Cochran et al. (2001). During 2018, waste was disposed in nine cells at the Area 5 RWMS: P18, P19, P20, P21, P22, P25, P27, P28, and T13. All active cells contain LLW, and P18 and P25 also contain MLLW.

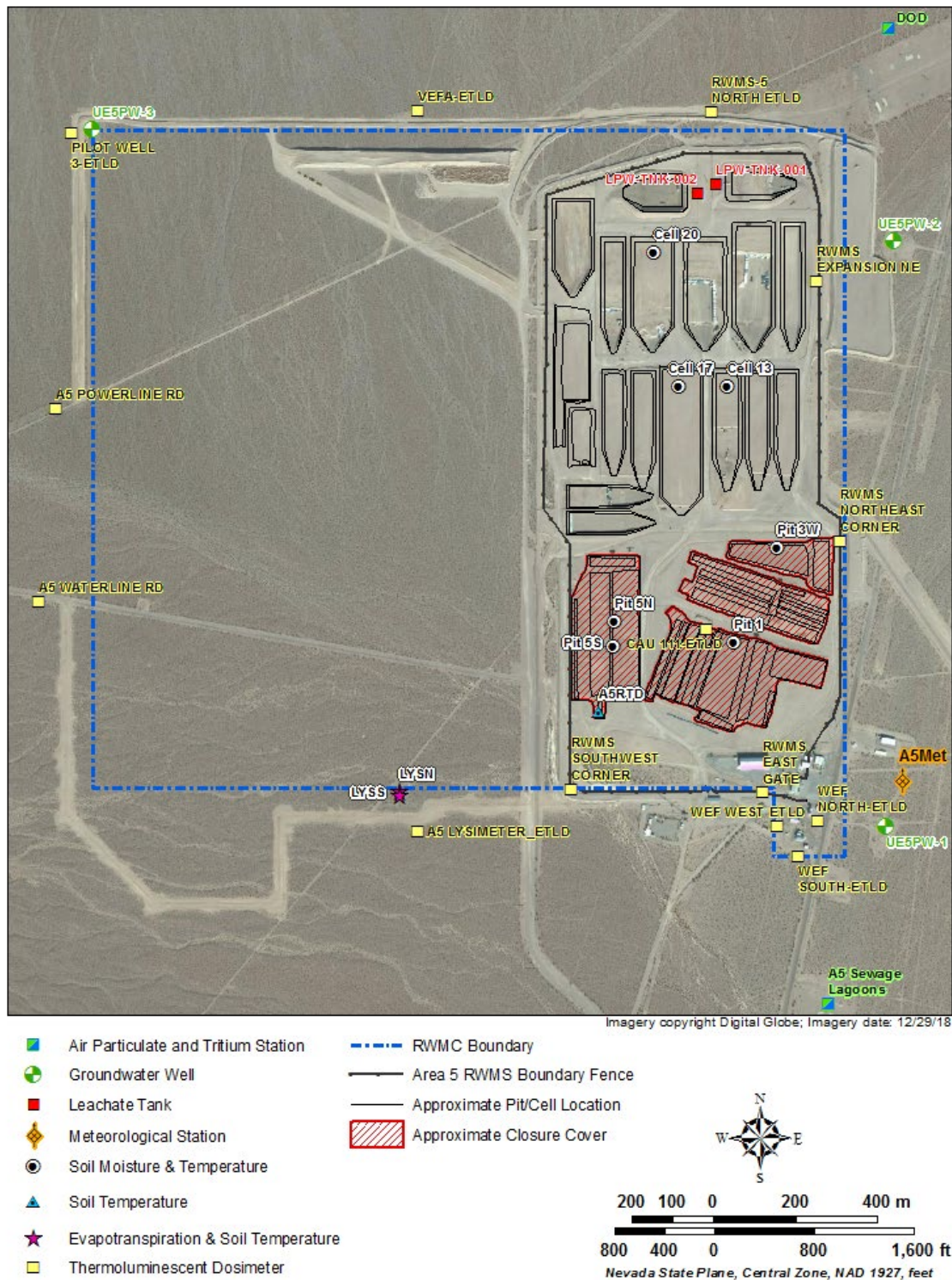


Figure 3-2. Monitoring Locations at the Area 5 RWMS

The 92-Acre Area in the southern portion of the Area 5 RWMS was permanently closed by constructing an engineered, monolayer, vegetated ET cover with a minimum thickness of 2.5 m (8.2 ft) over the waste cells. The 92-Acre Area ET cover closed 25 cells (P01, P02, P03, P04, P05, P06, P07, P09, P11, T01B, T02B, T03B, T04B, T06B, T07B, T01A, T02A, T03A, T04A, T04A-1, T05, T06A, T07A, T08, and T09); 12 GCD boreholes (GCD-01, GCD-02, GCD-03, GCD-04, GCD-05, GCD-06, GCD-07, GCD-08, GCD-09, GCD-10, GCD-11, and GCD-12); and the CH2M Hill Washington Group International Idaho trenches. P26 was also closed by the ET cover, but it is completely within P03. Four cells outside the 92-Acre Area (P08, P10, P12, and P15) are operationally inactive.

After grading and soil preparation was completed at the 92-Acre Area, the cover surface was disked and seeded with a mixture of native species during October through December 2011. Construction was completed in January 2012. A solid set irrigation system was installed on the cover, and irrigation was applied during seed germination in the spring and fall of 2012 (Goodrich 2010; U.S. Department of Energy, National Nuclear Security Administration Nevada Site Office 2010, 2012; The Delphi Group and J. A. Cesare and Associates 2012).

On May 7, 2013, an initial vegetation survey was completed on the 92-Acre Area cover by sampling forty 100-m (328-ft) transects. Successful establishment of the seeded species was very low, and there were very high concentrations of invasive weed species (primarily *Halogeton glomeratus* [halogeton] and *Salsola iberica* [Russian thistle]). Based on the interpretation of this survey, remedial revegetation was required to establish a viable plant community on the cover.

The 92-Acre Area comprises three soil covers separated by drainage channels and access roads. The three areas are designated as the North Cover, the South Cover, and the West Cover. The first remedial trial was done on the northern section of the North Cover with planting in October 2013. Results indicated that broadcast seeding was the preferred method of seeding and that the benefit of mulching was questionable. It was also noted that the impact of rabbits grazing on the new seedlings was a key factor.

The second remedial trial was done on the southern portion of the North Cover. The soil was tested and harrowed, and the seeds were tested for viability and washed before planting on October 29, 2014. Supplemental irrigation was applied from December to February and then again in May to facilitate the germination of the creosote seed. A total of 107 mm (4.21 in.) of irrigation was provided to augment 37 mm (1.5 in.) of natural precipitation for a total of 144 mm (5.67 in.), just less than the 174 mm (6.85 in.) typically needed to be considered a good growing season.

On March 11, 2015, it was determined that germination occurred on both the mulched and non-mulched treatments that were irrigated, but that no germination occurred on the non-irrigated treatments. Rabbit-proof fencing was installed around the southern portion of the North Cover, but unfortunately it was not completed until late spring 2015 after germination had occurred. On June 4, 2015, a quantitative survey was done, and there were only a few *Atriplex canescens* (four-wing saltbush) plants from the previous seeding trial. No newly seeded species were present during the sampling along several 100-m (328-ft) transects. It was presumed the young seedlings seen in March were eaten by rabbits that were observed inside the fence and also evidenced by the number of rabbit pellets documented in the March inspection. The only species observed during the June survey were Russian thistle and halogeton. These two weed species covered 34% of the irrigated sites and 2% of the

non-irrigated sites. In August 2015, the entire southern portion of the North Cover was sprayed with the herbicide glyphosate.

In 2016 there were no attempts to establish vegetation on the covers or any test treatments made. On June 29, 2016, a qualitative survey was performed. It was noted that no new four-wing saltbush plants were growing, but the ones seen from the previous survey were still present and continuing to grow.

In August 2017, the Tribal Revegetation Committee (TRC), Portland State University (PSU), and the Desert Research Institute (DRI) convened to spiritually interact with the land and map 38 randomly selected plots on the southern portion of the North Cover to initiate a revegetation study. They conducted inventories of nearby plant communities and finalized a field observation form. NSTec (the Management and Operating Contractor at the time) collected and set aside topsoil from a comparable ecological setting on the NNSS and also purchased seeds and transplants.

In December 2017, a subcontractor ripped the existing surfaces of the plots, spread the collected topsoil on designated plots, and planted seeds and transplants in 19 of the 38 plots. They also provided mulching and installed sprinklers and drip irrigation to the 19 plots. TRC, PSU, and DRI developed a monitoring plan and calculated the amount of supplemental water that would be required and provided this irrigation to the plots. This study continued throughout 2018, but no report on the findings was obtained before this report was completed.

THIS PAGE INTENTIONALLY LEFT BLANK

4.0 ENVIRONMENTAL MONITORING DATA

4.1 TYPES OF ENVIRONMENTAL MONITORING DATA

Area 3 RWMS monitoring locations are shown in Figure 3-1, and Area 5 RWMS monitoring locations are shown in Figure 3-2. A summary of the types of environmental monitoring data at the Area 3 RWMS is provided in Table 4-1, and a summary of the types of environmental monitoring at the Area 5 RWMS is provided in Table 4-2. This report provides a general description and graphical representations of some of these data.

2018 Waste Management Monitoring Report
Area 3 and Area 5 Radioactive Waste Management Sites

Table 4-1. Environmental Monitoring at the Area 3 RWMS

Monitoring	Description
Radiation Exposure	<ul style="list-style-type: none"> • 3-month measurement interval at 9 locations • Thermoluminescent dosimeter (TLD) measurements of total radiation exposure
Air	<ul style="list-style-type: none"> • 2-week sample interval at 3 locations • Tritium concentration in atmospheric moisture • Gross alpha and beta concentration of particulates • Air particulate analysis on quarterly composites for gamma-emitting radionuclides, americium (Am), and plutonium (Pu) concentrations
Radon Flux	<ul style="list-style-type: none"> • Periodic radon flux measurements • Various locations on waste covers
Meteorology	<ul style="list-style-type: none"> • Daily and hourly measurements at 1 location • Air temperature at 3.0 m (9.8 ft) and 9.5 m (31 ft) • Relative humidity at 3.0 m (9.8 ft) and 9.5 m (31 ft) • Vapor pressure at 3.0 m (9.8 ft) and 9.5 m (31 ft) • Wind speed and direction at 3.0 m (9.8 ft) and 9.5 m (31 ft) • Barometric pressure • Hourly, daily, and 5-minute precipitation rate • Solar radiation • Energy balance for ET calculation (net solar radiation, soil heat flux, soil temperature, and soil water content)
Vadose Zone	<ul style="list-style-type: none"> • Drainage lysimeters <ul style="list-style-type: none"> ◦ 8 lysimeters at 1 location ◦ 3 vegetation treatments (bare soil, invader species, and native species) with 2 irrigation treatments (precipitation and 3-times precipitation) ◦ Daily and hourly measurements at each lysimeter (drainage, water content, water potential, and temperature) • Daily water content profiles in final U-3ax/bl cover at 4 locations
Biota	<ul style="list-style-type: none"> • Periodic sampling of vegetation, small mammals, and animal burrow spoils analyzed for tritium, gamma-emitting radionuclides by gamma spectroscopy, and ²³⁸Pu, ²³⁹⁺²⁴⁰Pu, and ²⁴¹Am by alpha spectroscopy • Annual plant density and plant cover measurements for drainage lysimeters • Plant density and plant cover measurements on the U-3ax/bl cover every five years
Subsidence	<ul style="list-style-type: none"> • 8 surveyed subsidence monuments on the U-3ax/bl cover at 2-year measurement interval • Bi-annual visual inspections of U-3ax/bl cover for subsidence • Monthly visual inspections of operational covers for subsidence

Table 4-2. Environmental Monitoring at the Area 5 RWMS

Monitoring	Description
Radiation Exposure	<ul style="list-style-type: none"> • 3-month measurement interval at 12 locations • TLD measurements of total radiation exposure
Air	<ul style="list-style-type: none"> • 2-week sample interval at 2 locations • Tritium concentration in atmospheric moisture • Gross alpha and beta concentration of particulates • Air particulate analysis on quarterly composites for gamma-emitting radionuclides, Am, and Pu concentrations
Radon Flux	<ul style="list-style-type: none"> • Periodic radon flux measurements • Various locations on waste covers
Groundwater	<ul style="list-style-type: none"> • 3 wells surrounding Area 5 RWMS • Water level measurement at 3-month interval • Groundwater samples at 6-month interval • Analysis of indicators of contamination (Field measurements of pH and specific conductance [SC] and laboratory analysis of total organic carbon [TOC], total organic halides [TOX], and tritium) • Analysis of water chemistry (calcium, magnesium, potassium, sodium, iron, manganese, sulfate, chloride, fluoride, silicate, and alkalinity) • Sampling and chemical analysis when P18 leachate collection tank is full
Meteorology	<ul style="list-style-type: none"> • Daily and hourly measurements at 1 location • Air temperature at 3.0 m (9.8 ft) and 9.5 m (31 ft) • Relative humidity at 3.0 m (9.8 ft) and 9.5 m (31 ft) • Vapor pressure at 3.0 m (9.8 ft) and 9.5 m (31 ft) • Wind speed and direction at 3.0 m (9.8 ft) and 9.5 m (31 ft) • Barometric pressure • Hourly, daily, and 5-minute precipitation rate • Solar radiation • Energy balance measurements for ET calculation (net solar radiation, soil heat flux, soil temperature, and soil water content)
Vadose Zone	<ul style="list-style-type: none"> • Weighing lysimeters <ul style="list-style-type: none"> ◦ Two lysimeters (one simulating a bare soil treatment and the other simulating a native species treatment) ◦ Direct measurement of ET ◦ Daily water content, water potential, and temperature profiles at each lysimeter • Daily water content, water potential, and temperature profiles in the covers at 7 locations • Daily water content below closed disposal cells at 4 locations • Soil temperature around radioisotope thermoelectric generators (RTGs)
Biota	<ul style="list-style-type: none"> • Periodic sampling of vegetation, small mammals, and animal burrow spoils analyzed for tritium, gamma-emitting radionuclides by gamma spectroscopy, and ^{238}Pu, $^{239+240}\text{Pu}$, and ^{241}Am by alpha spectroscopy • Annual plant density and plant cover measurements on each weighing lysimeter and the 92-Acre Area covers
Subsidence	<ul style="list-style-type: none"> • Annual survey of 52 subsidence monuments on the 92-Acre Area covers • Quarterly visual inspections of 92-Acre Area covers for subsidence • Weekly visual inspections of operational covers for subsidence

4.2 RADIATION EXPOSURE DATA

Direct radiation monitoring assesses and detects changes in the external radiation environment and measures gamma radiation levels near potential exposure sites. Performance objectives in DOE Manual DOE M 435.1-1, "Radioactive Waste Management Manual," (DOE 2001a) require that LLW disposal facilities be sited, designed, operated, maintained, and closed so a reasonable, expected, total effective dose equivalent from the facility to a representative member of the public is less than 25 millirems per year (mrem/yr). The effective dose equivalent is from all exposure pathways associated with the facility but does not include the dose from radon or background radiation. The RWMSs are located well within the NNSS boundaries, so the public does not have access to these areas for significant periods of time. However, exposure rates measured by TLDs located at the RWMSs show the potential dose to a hypothetical person residing continuously at the RWMSs.

TLDs (Panasonic UD 814AS) are used to measure ionizing radiation exposure from all sources, including natural and man-made radioactivity. These TLDs have three calcium-sulfate elements housed in an air-tight, water-tight, ultraviolet-light-protected case. The elements measure the total exposure rate from penetrating gamma radiation including background radiation. The penetrating gamma radiation makes up the deep dose, which is compared to the 25-mrem/yr limit when background exposure is subtracted.

Figure 3-1 and Figure 3-2 show TLD monitoring locations near the Area 3 and Area 5 RWMSs, respectively. A pair of TLDs is placed 1 ± 0.3 m (39 ± 12 in.) above ground level (AGL) at each location and exchanged for analysis on a quarterly basis. TLDs are analyzed using automated TLD readers that are calibrated and maintained by the MSTS Radiological Control Department. Reference TLDs exposed to 100 milliroentgen (mR) from a cesium-137 radiation source under controlled conditions are used to scale the response of the measurement TLDs. Direct radiation exposure is usually reported in the unit mR, which is a measure of exposure in terms of numbers of ionizations in air. Generally, the dose in human tissue resulting from an exposure from the most common external radionuclides can be approximated by equating a 1-mR exposure with a 1-millirem (mrem) dose.

Between 1952 and 1972, 60 nuclear weapons tests were conducted within 400 m (1,312 ft) of the Area 3 RWMS boundary. Fourteen of these tests were atmospheric tests, which left radionuclide-contaminated surface soil with elevated radiation exposures across the area. Five of the seven subsidence craters within the Area 3 RWMS were converted into three disposal units. During disposal operations, the waste is covered with clean soil, resulting in lower exposures inside the Area 3 RWMS when compared with the average exposures at the Area 3 RWMS fence line or in Area 3 outside the fence line.

Annual radiation exposures measured in milliroentgens per year (mR/yr) during 2018 at nine locations inside and near the Area 3 RWMS ranged from 119 to 279 mR/yr (Figure 4-1). The Area 3 monitoring locations are inside the Area 3 RWMS (RWMS Center), on the RWMS boundary (RWMS North, RWMS East, RWMS South, and RWMS West), and outside the RWMS boundary (T3, T3 West, T3A, and U3CO North) (Figure 3-1). The exposures measured inside the Area 3 RWMS and three of four measurements at the boundary are within the range of background exposures.

The four TLD locations outside the Area 3 RWMS boundary and RWMS South (boundary location) have higher exposures due to nearby historical aboveground nuclear weapons tests. This distribution of exposures indicates radionuclides in the Area 3 RWMS have a negligible

contribution to total exposure for a hypothetical person residing at the Area 3 RWMS when compared with exposures resulting from historical aboveground nuclear weapons tests. Estimated daily exposure rates in mR per day from the quarterly exposure rate data at the Area 3 RWMS are within the range of exposure rates at NNSS background locations (Figure 4-2).

Between 1951 and 1971, 25 nuclear weapons tests were conducted within 6.3 km (3.9 mi) of the Area 5 RWMS. Fifteen of these were atmospheric tests, and nine of the remaining ten tests released radioactivity to the surface. There were no nuclear weapons tests within the boundaries of the Area 5 RWMS. Over the past 10 years, all exposure rate measurements are within the range of background levels measured on the NNSS.

Comparisons of 2006 to 2018 direct radiation exposure data using TLDs from the two RWMSs with direct radiation data from NNSS background locations indicate that direct radiation exposure at the Area 3 and Area 5 RWMSs is generally low or declining (Figure 4-2 and Figure 4-3).

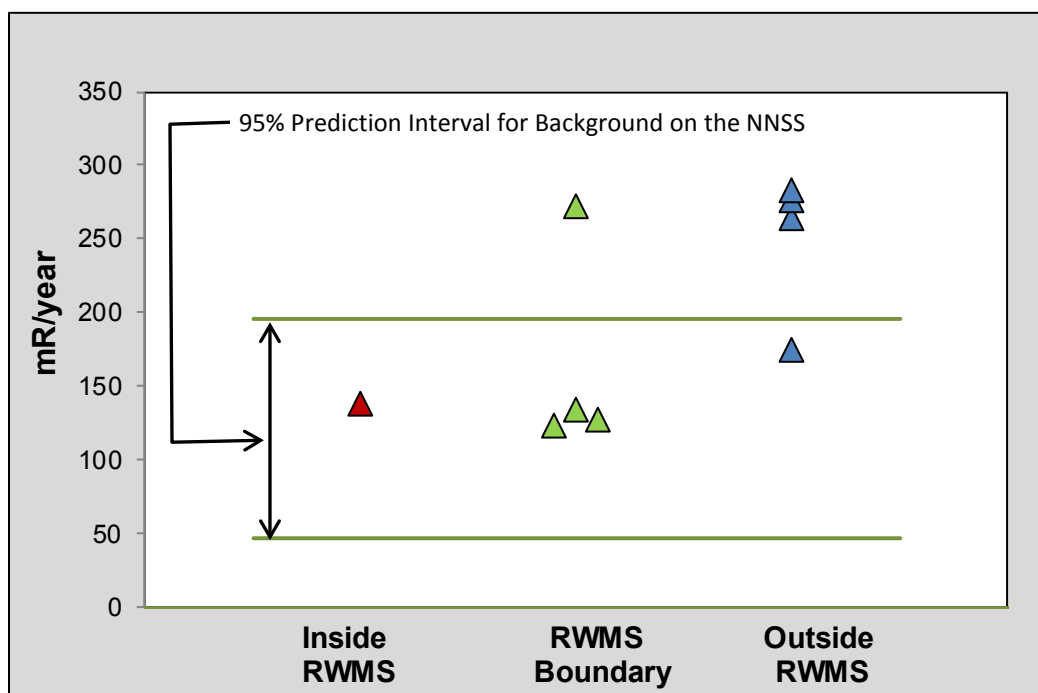


Figure 4-1. Annual Radiation Exposure Rates at the Area 3 RWMS

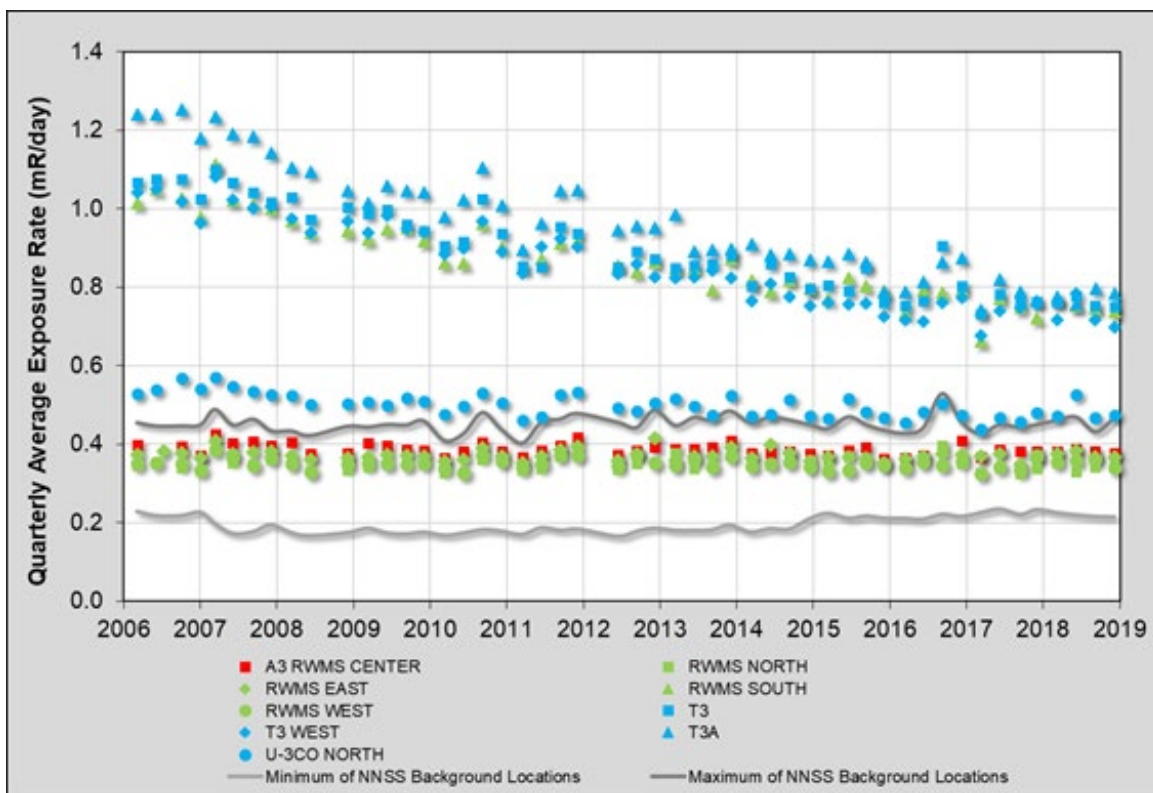


Figure 4-2. Quarterly Average Daily Exposure Rates at the Area 3 RWMS

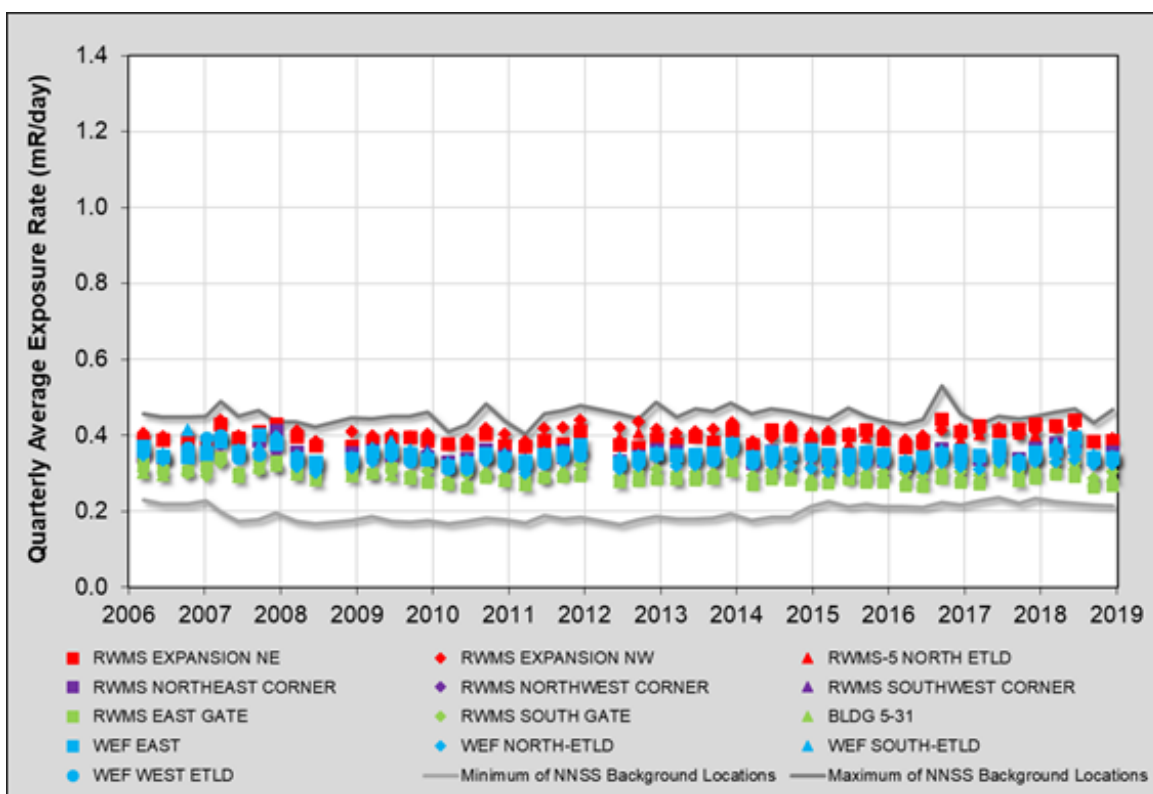


Figure 4-3. Quarterly Average Daily Exposure Rates at the Area 5 RWMS

4.3 AIR MONITORING DATA

4.3.1 Tritium

Tritium is a highly mobile isotope of hydrogen that acts as a conservative tracer. It is an excellent performance indicator of volatile radionuclide migration from waste cells. Atmospheric moisture is continuously collected at the Area 3 and Area 5 RWMSs and analyzed for tritium. Approximately 11 cubic meters (m³) (388 cubic feet [ft³]) of air are drawn across a desiccant during each 2-week sample period to collect atmospheric moisture. Moisture is distilled from the desiccant, and tritium activity is measured by liquid scintillation.

Tritium was sampled at one air monitoring location inside the Area 3 RWMS and two nearby areas during 2018 (Figure 3-1). These locations were U-3ax/bl South, Bilby Crater, and Kestrel Crater N. U-3ax/bl South measures radionuclide concentrations near the center of the Area 3 RWMS, while Bilby Crater and Kestrel Crater N measure radionuclide concentrations in the prevailing wind directions at the Area 3 RWMS. Bilby Crater is approximately 1.2 km (0.75 mi) north of the Area 3 RWMS, and Kestrel Crater N is approximately 1.5 km (0.93 mi) south of the Area 3 RWMS. Consistently higher radionuclide concentrations at U-3ax/bl South compared to Bilby Crater and Kestrel Crater N might indicate the Area 3 RWMS is the source of the elevated radionuclide concentrations while similar radionuclide concentrations would indicate the Area 3 RWMS is not a strong source of radionuclides.

Tritium was sampled at two air monitoring locations near the Area 5 RWMS during 2018 (Figure 3-2). These locations were Department of Defense (DoD) and RWMS 5 Lagoons. The DoD station is approximately 1.0 km (0.62 mi) north-northeast of the center of the Area 5 RWMS, and the RWMS 5 Lagoons station is approximately 1.5 km (0.93 mi) south-southeast of the center of the Area 5 RWMS (Figure 3-2). These monitoring locations are generally in the prevailing wind directions and provide adequate environmental monitoring for the Area 5 RWMS.

During 2018, tritium concentrations at the Area 3 and Area 5 RWMSs ranged from -1.03 to 2.04 picocuries per cubic meter. Concentrations at all locations were similar throughout the year (Figure 4-4). The majority of tritium results from both the Area 3 and 5 RWMSs were below the minimum detectable concentration during 2018 and all results were well below the DOE Derived Concentration Standard (DCS) (DOE 2011) for tritium adjusted to the 10-mrem/yr dose limit specified in DOE M 435.1 for the air pathway. This scaled DCS is the tritium concentration in air that results in a 10-mrem annual effective dose to a person breathing it for the entire year.

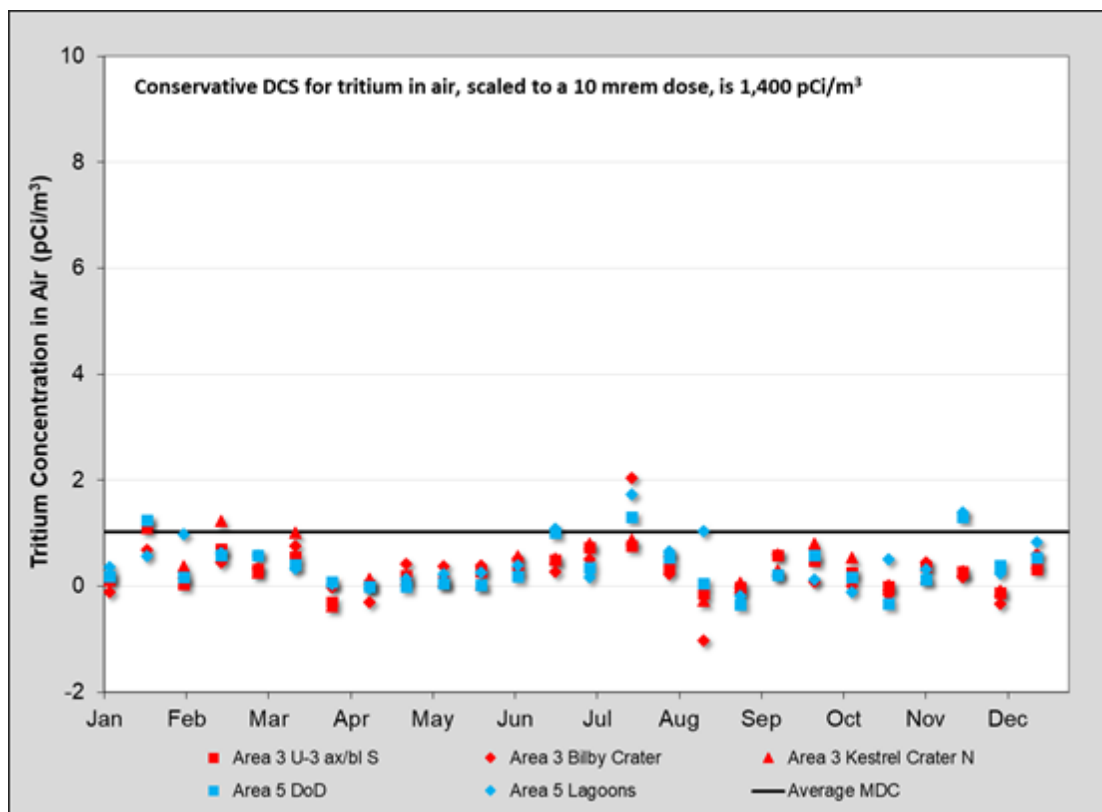
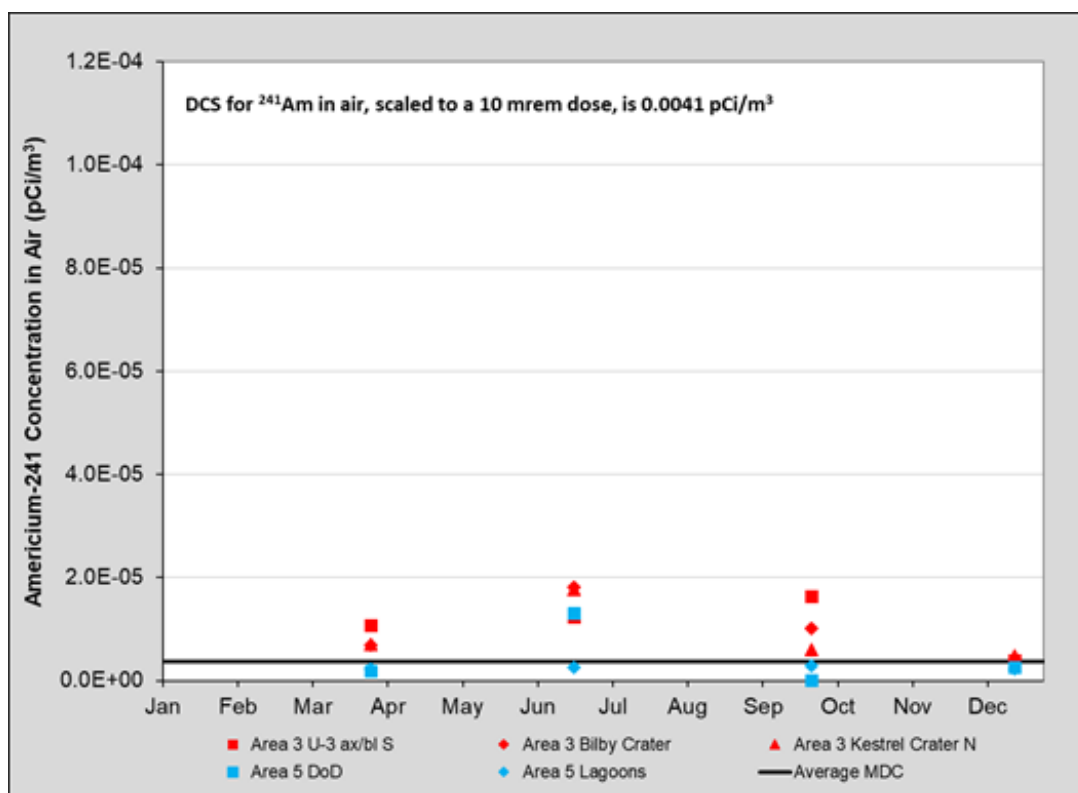
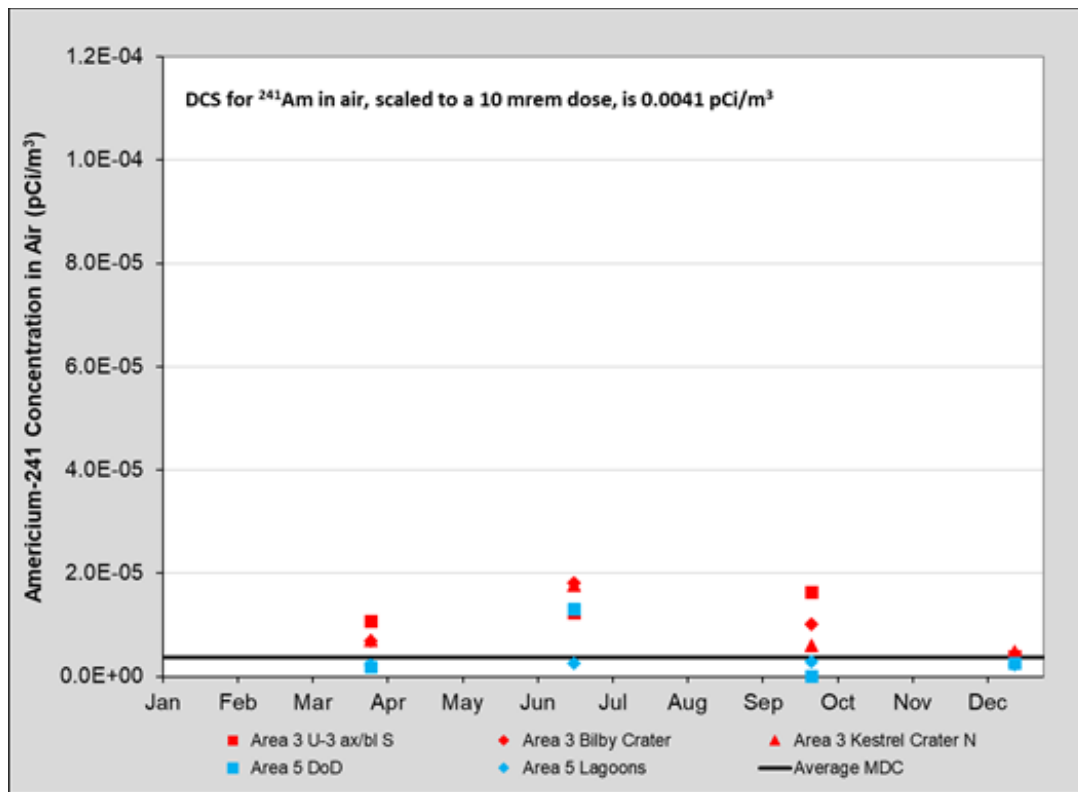


Figure 4-4. Tritium Concentration in Air at the Area 3 and Area 5 RWMSs

4.3.2 Particulates

Air particulate samples were collected every 2 weeks during 2018 at the same locations described above for tritium monitoring (Figure 3-1 and Figure 3-2). Each sample was collected using a vacuum pump to draw approximately 1,700 m³ (60,000 ft³) of air through a glass-fiber filter with a collection efficiency of 99.99%. The air particulates were collected on the filter. Each filter was screened for gross alpha and gross beta radioactivity to provide early detection of any change in environmental concentrations of airborne radioactivity. Quarterly composites of the filters from each sampling location were analyzed by gamma spectroscopy for gamma-emitting radionuclides and by alpha spectroscopy for Am and Pu.

The results for ^{241}Am , ^{238}Pu , and $^{239+240}\text{Pu}$ in air are provided in Figure 4-5, Figure 4-6, and Figure 4-7, respectively. ^{241}Am and $^{239+240}\text{Pu}$ concentrations tend to be slightly higher at the Area 3 RWMS compared with those at the Area 5 RWMS, and concentrations are generally higher during the second or third quarter. This is likely a result of dry soil conditions and relatively high, unstable, winds that generally occur during that time. All 2018 results were well below the 10-mrem/yr adjusted DCS for each radionuclide.

Figure 4-5. Concentration of ^{241}Am in Air at the Area 3 and Area 5 RWMSsFigure 4-6. Concentration of ^{238}Pu in Air at the Area 3 and Area 5 RWMSs

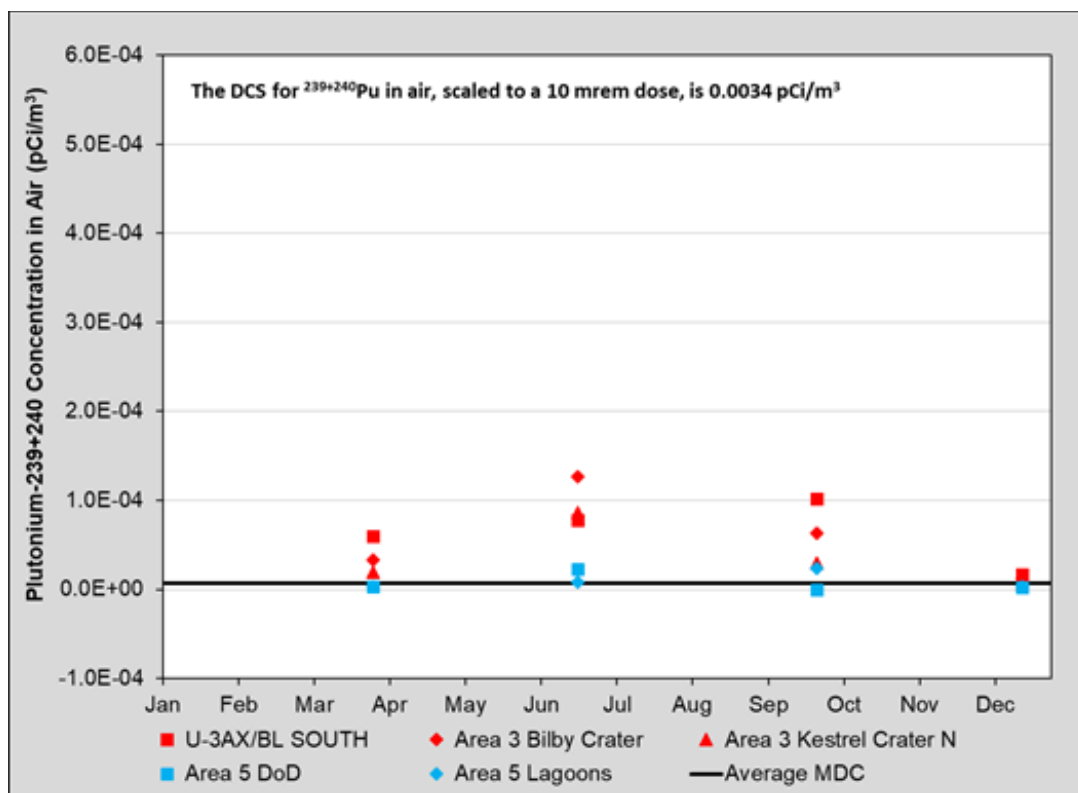


Figure 4-7. Concentration of $^{239+240}\text{Pu}$ in Air at the Area 3 and Area 5 RWMSs

4.3.3 Radon

The performance objective from DOE M 435.1-1, "Radioactive Waste Management Manual," for radon emissions from DOE radioactive waste facilities is 20 picocuries per square meter per second (pCi/m²/s). Radon flux was measured during 2018 at multiple locations at the Area 3 and Area 5 RWMSs and at an undisturbed, control site outside of each RWMS. Measurements were collected December 11–13, 2018, using radon flux domes (Rad Elec, Inc.) placed on the ground surface. Electrets inserted in the domes are electrically discharged by ionization of air from radon. The amount of discharge is correlated with radon flux from the ground. Results show radon flux was well below the 20-pCi/m²/s limit (Figure 4-8 and Figure 4-9).

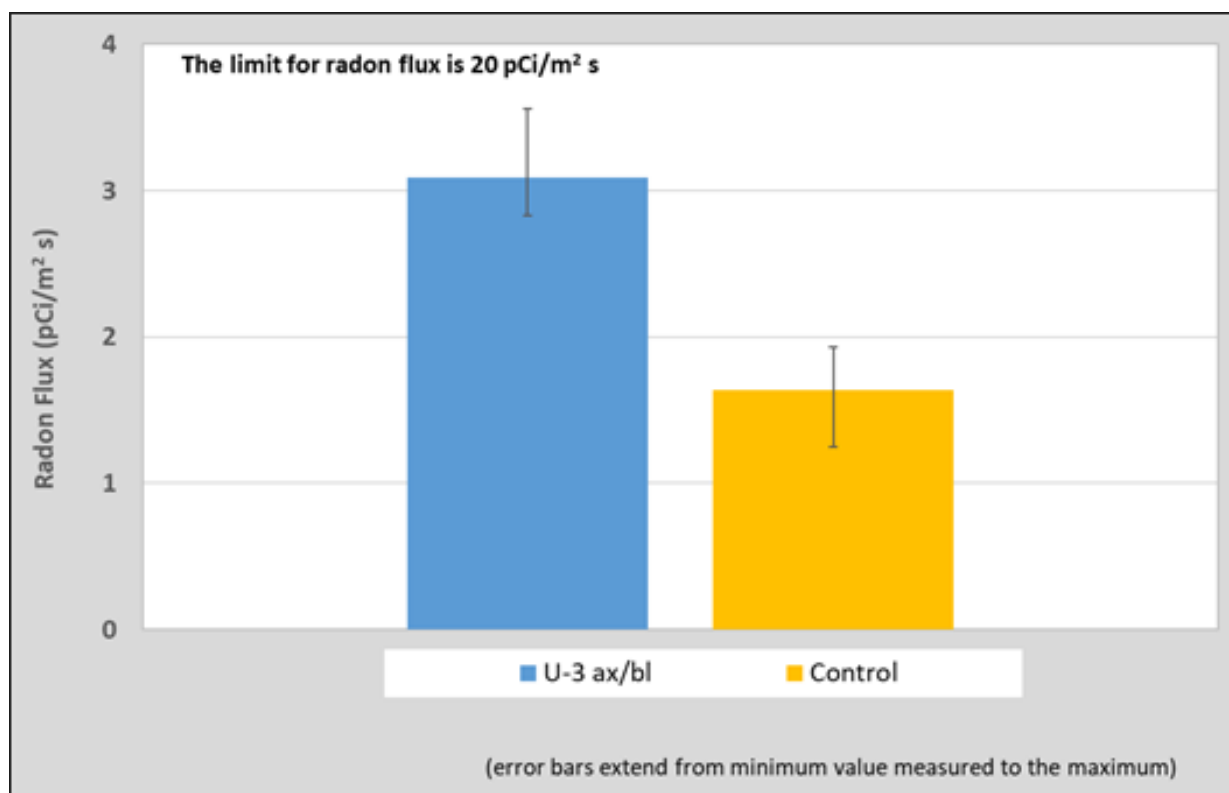


Figure 4-8. Radon Flux Results in Area 3

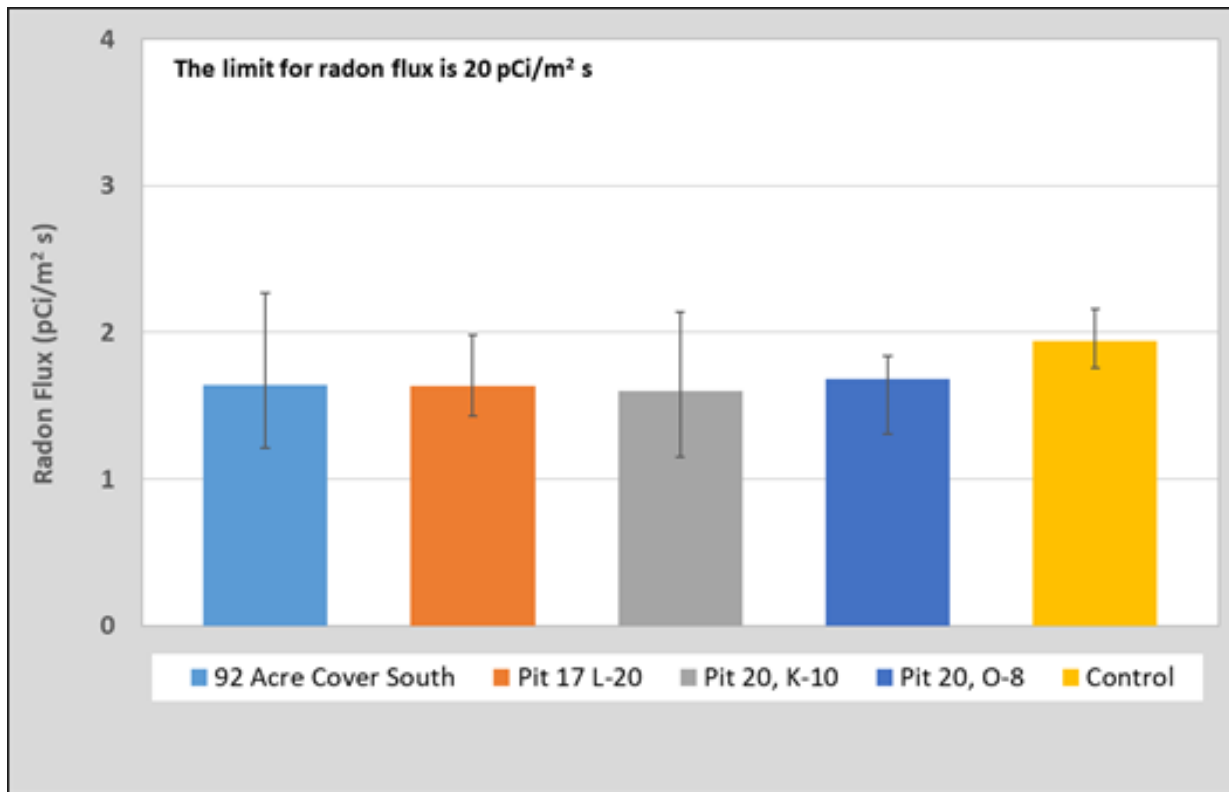


Figure 4-9. Radon Flux Results in Area 5

4.4 GROUNDWATER MONITORING DATA

4.4.1 Groundwater Monitoring at the Area 5 RWMS Pilot Wells

Three wells (UE5PW-1, UE5PW-2, and UE5PW-3) were drilled around the perimeter of the Area 5 RWMS in 1993 (Figure 3-2). These wells are sampled twice a year to monitor the groundwater below the Area 5 RWMS. Groundwater samples were collected on March 6 and August 14, 2018. Investigation levels (ILs) have been established for five indicators of contamination migration. The measured indicators are SC, pH, TOC, TOX, and tritium. Further groundwater analyses are required if any analyte exceeds its IL. Results from 2018 are summarized in Table 4-3. General water chemistry parameters are also measured. Negative tritium results indicate the measured activity is less than the measured laboratory background activity.

To date, all analytical data from groundwater sampling events from the wells indicate that the groundwater in the uppermost aquifer is unaffected by activities at the Area 5 RWMS. Detailed information and data on the groundwater monitoring program at the Area 5 RWMS are presented in the *Nevada National Security Site 2018 Data Report: Groundwater Monitoring Program, Area 5 Radioactive Waste Management Site* (MSTS 2019a).

Table 4-3. Investigation Levels and Results from 2018 Groundwater Monitoring

Indicator Parameter	Investigation Level	Results
pH	<7.6 or >9.2	8.30 to 8.41
SC	0.440 mmho/cm	0.355 to 0.384 mmho/cm
TOC	2.0 mg/L	All < 1 mg/L
TOX	0.1 mg/L	All < 0.01 mg/L
Tritium	2000 pCi/L	All < 300 pCi/L

mmho/cm: millimho(s) per centimeter

mg/L: milligram(s) per liter

pCi/L: picocurie(s) per liter

Groundwater elevations at the pilot wells are measured quarterly using an electronic tape. Elevations were measured on March 5, June 4, August 13, and October 25, 2018. Groundwater elevation data since 2014 are shown in Figure 4-10. The 2018 average groundwater elevations were 733.41 m (2,406.2 ft) AMSL at UE5PW-1, 733.56 m (2,406.7 ft) AMSL at UE5PW-2, and 733.65 m (2,407.0 ft) AMSL at UE5PW-3. These data indicate that the water table beneath the Area 5 RWMS is flat, with little or no groundwater flow. Estimated groundwater flow velocity is 9.7 cm per year (3.8 in. per year) to the south-southeast.

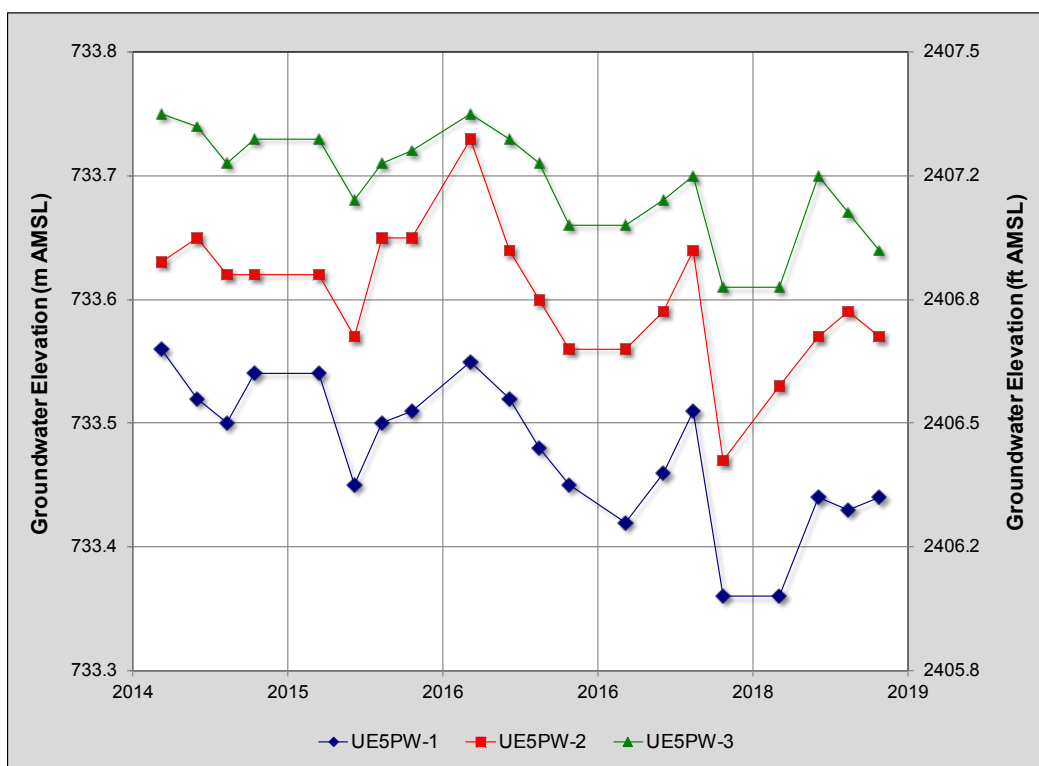


Figure 4-10. Groundwater Elevations at the Area 5 Pilot Wells

4.4.2 Leachate Monitoring at P18 and P25

Cell 18 (P18) is a lined, MLLW disposal cell located in the northeastern corner of the Area 5 RWMS. It was constructed in 2010 and began receiving waste in January 2011. The Cell 18 liner is a RCRA-compliant double liner with a leachate collection and leak detection system placed over a geosynthetic clay liner. In 2018, construction finished on a new MLLW disposal cell due west of Cell 18, and the first waste was received in February 2018. The new Cell 25 (P25) has a 10,000-gallon leachate tank instead of a 3,000-gallon tank and has an area, including the sloped sides, of 1.42 ha (3.50 ac), while Cell 18 has an area of 1.35 ha (3.33 ac). No leachate was pumped out of the Cell 25 tank in 2018.

Cell 18 and Cell 25 have double liners covered by approximately 61 cm (24 in.) of compacted soil on the cell side slopes and approximately 76 cm (30 in.) of compacted soil on the cell floor. Each primary liner is 80-mil textured high-density polyethylene (HDPE), and each secondary liner is 60-mil textured HDPE. Each primary liner is directly below a 160-mil double-sided geocomposite drainage layer, and a second 160-mil double-sided geocomposite drainage layer separates the primary liner from the underlying secondary liner.

Any precipitation or other water applied to the area covered by the liner that is not removed by ET eventually infiltrates into the soil above the liner, percolates through the soil to the primary liner, and eventually drains into the primary sump in the floor of the cells. Any water leaking through the primary liner would percolate to the secondary liner and eventually drain into the secondary sump in the floor of the cells. Water collected in the primary sump is pumped from the sump to the leachate tanks on the surface above the cells.

The total volume pumped from the primary sump at Cell 18 into the leachate collection tank from January 2011 through December 2018 was 360,215 liters (95,159 gallons) (Figure 4-11). From January 2011 through December 2018, 880 mm (34.7 in.) of precipitation were received at the Area 5 RWMS. The equivalent depth of the collected leachate distributed over the 1.35 ha (3.33 ac) covered by the Cell 18 liner was 27.2 mm (1.07 in.). Neglecting additional water applied to Cell 18 for dust control, leachate was approximately 3.1 percent of precipitation. The total volume pumped from the primary sump into the leachate collection tank in 2018 was 18,590 liters (4,910 gallons). In 2018, 74.5 mm (2.93 in.) of precipitation were received at the Area 5 RWMS. The equivalent depth of the yearly collected leachate distributed over the 1.35 ha (3.33 ac) covered by the Cell 18 liner was 1.4 mm (0.055 in.). Neglecting additional water applied to Cell 18 for dust control, leachate was approximately 1.9 percent of the 2018 precipitation.

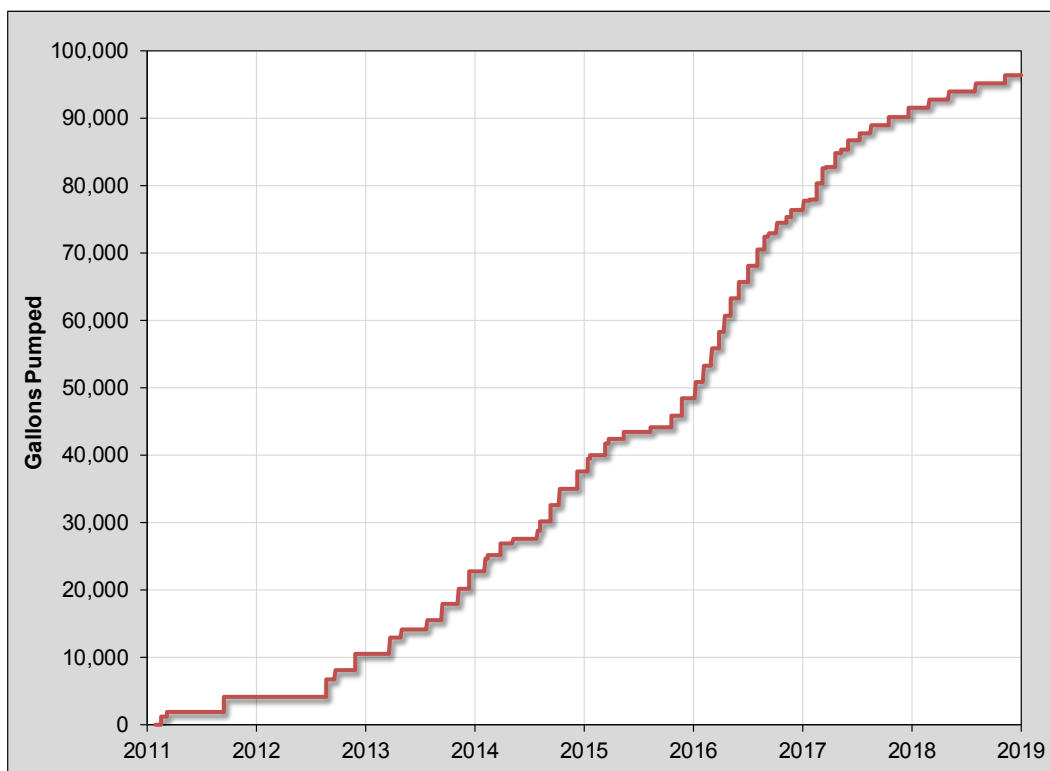


Figure 4-11. Leachate Volume Pumped from Cell 18 Primary Sump

When the Cell 18 tank approaches its 3,000-gallon capacity, leachate samples are collected from the tank and analyzed for the toxicity characteristic contaminants listed in Table 1 of 40 CFR 261.24 (2003) (polychlorinated biphenyls [PCBs], pH, and SC). Since Cell 18 opened in 2011 through 2018, leachate samples were collected forty times, and the tank was emptied forty times. During 2018, leachate samples were collected twice (March 1 and August 1), and the tank was emptied twice (March 22 and August 28.) Typically, there is approximately a 2-week delay between sampling and emptying the leachate tank. Detailed results for the leachate are presented in the *Nevada National Security Site 2018 Data Report: Groundwater Monitoring Program, Area 5 Radioactive Waste Management Site* (MSTS 2019a).

Indicators of contamination monitored in leachate include the following:

- Toxicity characteristic contaminants
 - Metals (arsenic, barium, cadmium, chromium, lead, selenium, and silver)
 - Mercury
 - Semi-volatiles (o-cresol, m-cresol, p-cresol, 1,4-dichlorobenzene, 2,4-dinitrotoluene, hexachlorobenzene, hexachlorobutadiene, hexachloroethane, nitrobenzene, pentachlorophenol, pyridine, 2,4,5-trichlorophenol, and 2,4,6-trichlorophenol)
 - Volatiles (benzene, carbon tetrachloride, chlorobenzene, chloroform, 1,2-dichloroethane, 1,1-dichloroethylene, methyl ethyl ketone, tetrachloroethylene, trichloroethylene, and vinyl chloride)
 - Organochlorine pesticides (chlordane, endrin, heptachlor [and its epoxide], lindane, methoxychlor, and toxaphene)
 - Chlorinated herbicides (2,4-D and 2,4,5-TP [Silvex])
- PCBs
- pH
- SC

Through 2018, no regulatory limits for toxicity characteristic contaminants were exceeded, and no PCBs exceeded the analysis method quantification limit. During 2018, the leachate average SC was 4.48 mmho/cm, and the leachate average pH was 7.49. After leachate results were evaluated, the leachate was pumped from the collection tank and used for dust control in Cell 18.

4.5 METEOROLOGY MONITORING DATA

Meteorology monitoring data collected in 2018 included precipitation, air temperature, humidity, wind speed and direction, barometric pressure, and incoming solar radiation. Net solar radiation, soil heat flux, soil temperature, and soil water content were also measured for energy balance-based calculations of ET. These are basic meteorological parameters required to quantify the exchange of water and heat between the soil and the atmosphere. These data were collected from two meteorology stations, one located approximately 30 m (100 ft) northwest of the Area 3 RWMS, and one near the Area 5 RWMS about 100 m (328 ft) north of Well UE5PW-1 (Figure 3-1 and Figure 3-2).

4.5.1 Air Temperature

Air temperatures at the Area 3 RWMS are slightly cooler than air temperatures at the Area 5 RWMS. The 2018 average recorded temperatures at 9.5 m (31 ft) AGL were 15.7°C (60.3°F) at the Area 3 RWMS and 17.8°C (64.0°F) at the Area 5 RWMS. The 2018 maximum and minimum temperatures at 9.5 m (31 ft) at the Area 3 RWMS were 40.6°C (105.1°F) on July 25, 2018, and -10.5°C (13.1°F) on February 23, 2018. The 2018 maximum and minimum temperatures at 9.5 m (31 ft) at the Area 5 RWMS were 42.6°C (108.7°F) on July 17, 2018, and -9.1°C (15.6°F) on February 24, 2018 (Figure 4-12).

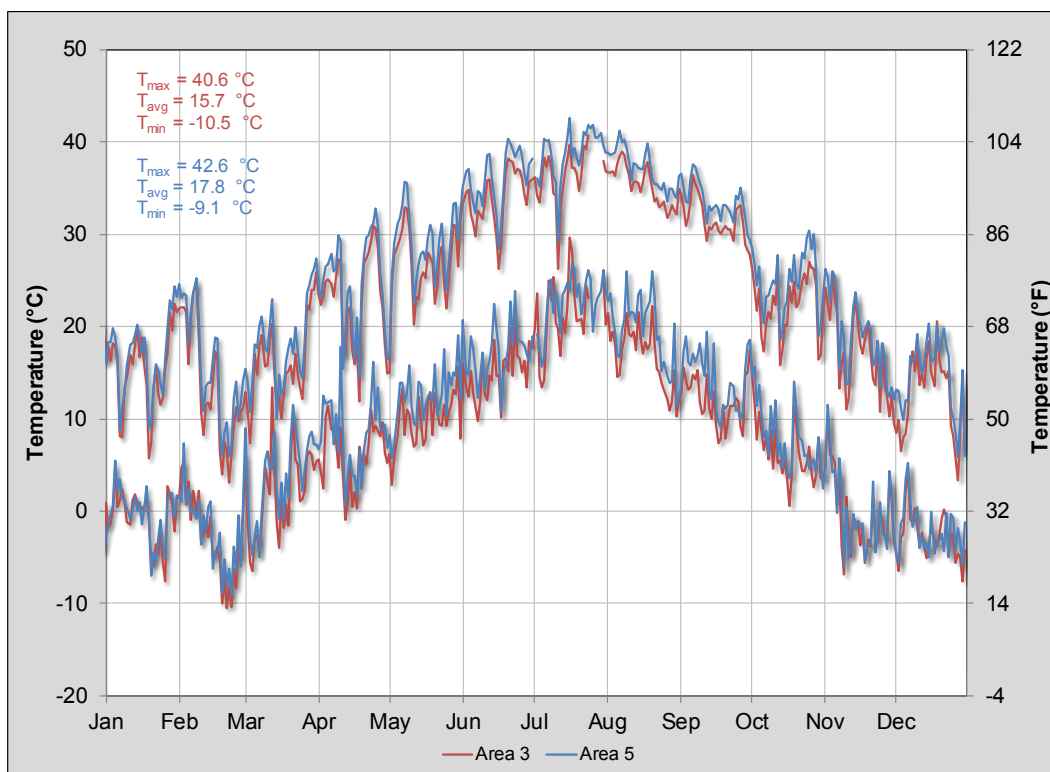


Figure 4-12. Daily Maximum and Minimum Air Temperature at the Area 3 & Area 5 RWMSs

4.5.2 Relative Humidity

Measured relative humidity at the Area 3 RWMS and the Area 5 RWMS is similar. The daily average relative humidity during 2018 at 9.5 m (31 ft) AGL was 29.2% for Area 3 and 27.6% for Area 5 (Figure 4-13). Measured daily average relative humidity ranged from 5.32% to 93.7%.

Vapor density, or absolute humidity, measures the amount of water vapor in air as grams per cubic meter (g/m^3) and can be calculated from relative humidity and air temperature. It is directly related to the air vapor pressure and measures the absolute amount of water in the air. Unlike relative humidity, vapor density is not temperature dependent. The daily average vapor density during 2018 was 3.6 g/m^3 at the Area 3 RWMS and 3.8 g/m^3 at the Area 5 RWMS (Figure 4-14). The measured daily average vapor density ranged from 0.7 g/m^3 to 13.1 g/m^3 .

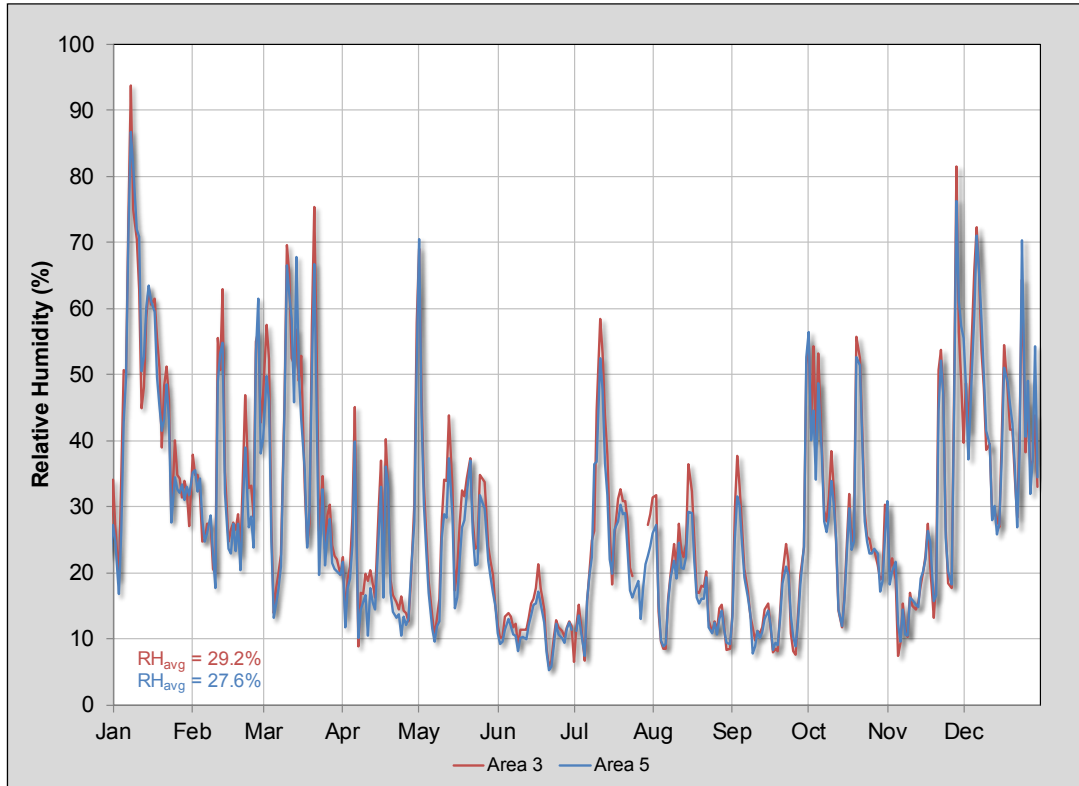


Figure 4-13. Daily Average Relative Humidity at the Area 3 and Area 5 RWMSs

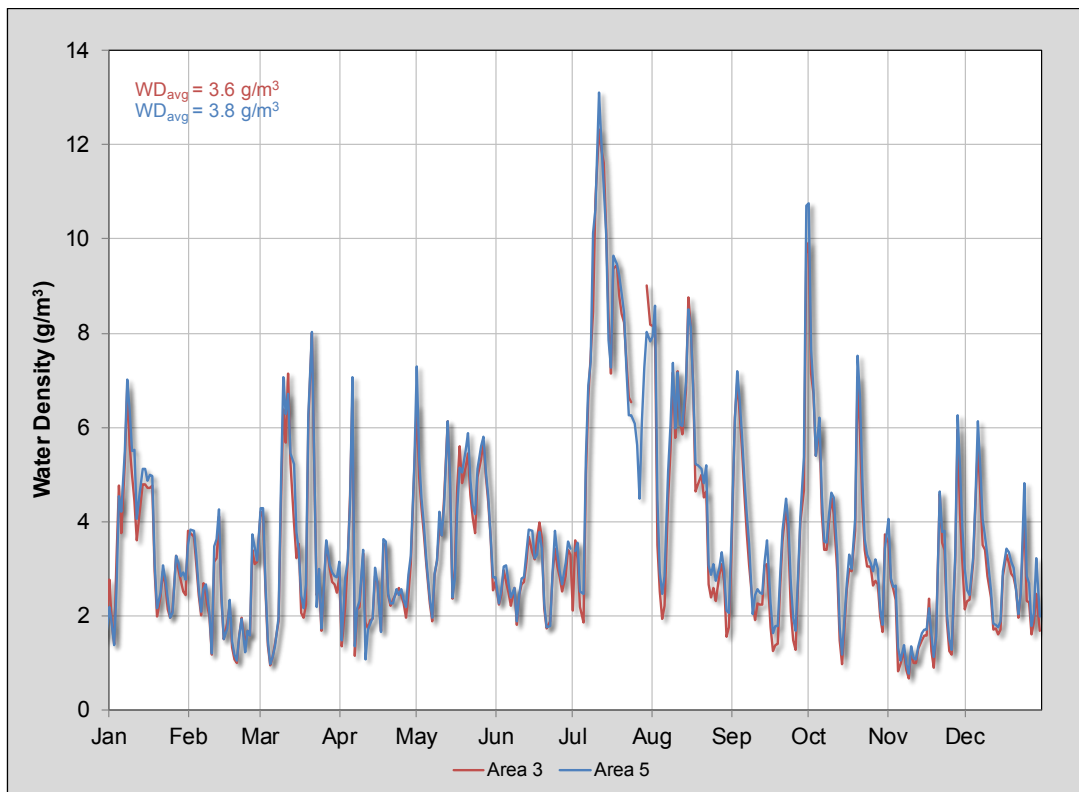


Figure 4-14. Daily Average Atmospheric Water Density at the Area 3 and Area 5 RWMSs

4.5.3 Barometric Pressure

Average daily barometric pressure measured at the Area 3 RWMS and the Area 5 RWMS typically shows very similar patterns (Figure 4-15). The average barometric pressure at the Area 3 RWMS in 2018 was 87.8 kilopascals (kPa) (12.7 pounds per square inch [PSI]). The average barometric pressure at the Area 5 RWMS in 2018 was 90.5 kPa (13.1 PSI). The difference in barometric pressure readings between the two locations reflects the 261 m (856 ft) difference in elevation.

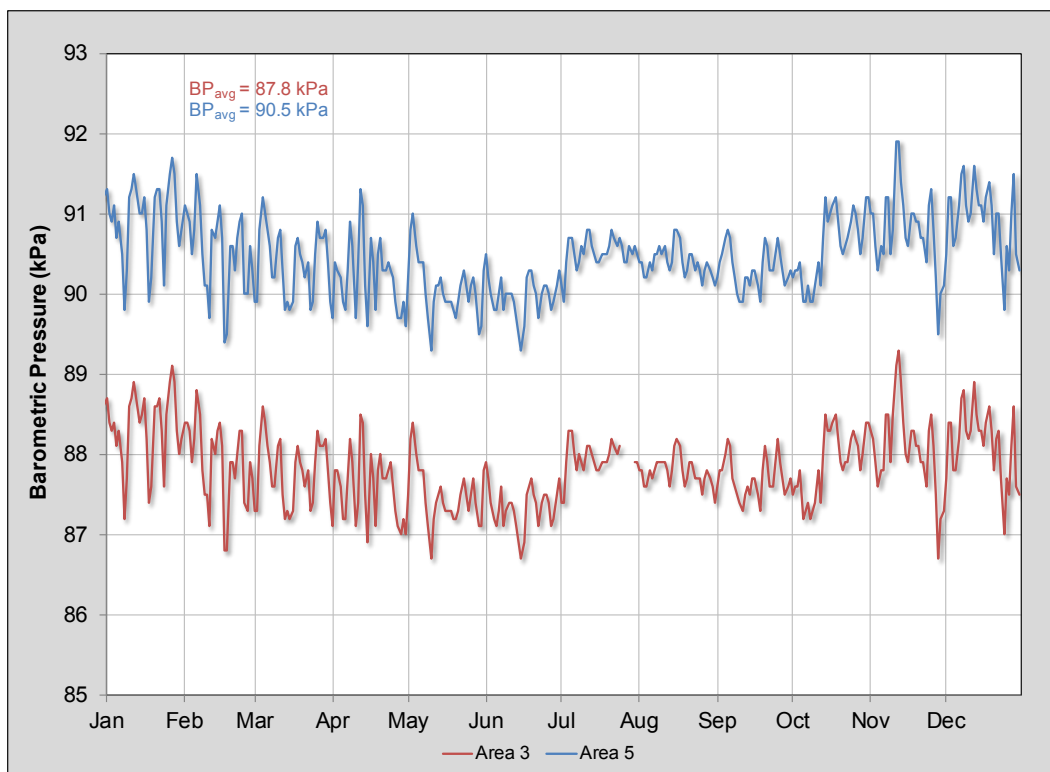


Figure 4-15. Average Barometric Pressure at the Area 3 and Area 5 RWMSs

4.5.4 Wind Speed and Wind Direction

The average wind speed is slightly higher at the Area 3 RWMS than at the Area 5 RWMS. During 2018, the average daily wind speed at the Area 3 RWMS at 9.5 m (31 ft) was 3.9 m/s (8.7 mph), and the maximum gust was 26.0 m/s (58.2 mph) on April 16. During 2018, the average daily wind speed at the Area 5 RWMS at 9.5 m (31 ft) was 3.2 m/s (7.2 mph), and the maximum gust was 23.9 m/s (53.5 mph) on April 16. Daily maximum and average wind speeds at the Area 3 and Area 5 RWMSs are shown in Figure 4-16 and Figure 4-17, respectively.

Wind rose diagrams illustrate wind direction and wind speed distribution in each direction using hourly wind data measured at a height of 9.5 m (31 ft) AGL. Generally, the wind comes from the south/southwest during the day, and shifts to the north at night. Wind roses from the Area 3 and Area 5 RWMSs are presented in Figure 4-18 and Figure 4-19, respectively. The 1-year wind roses presented here are very similar to the multiple-year wind roses.

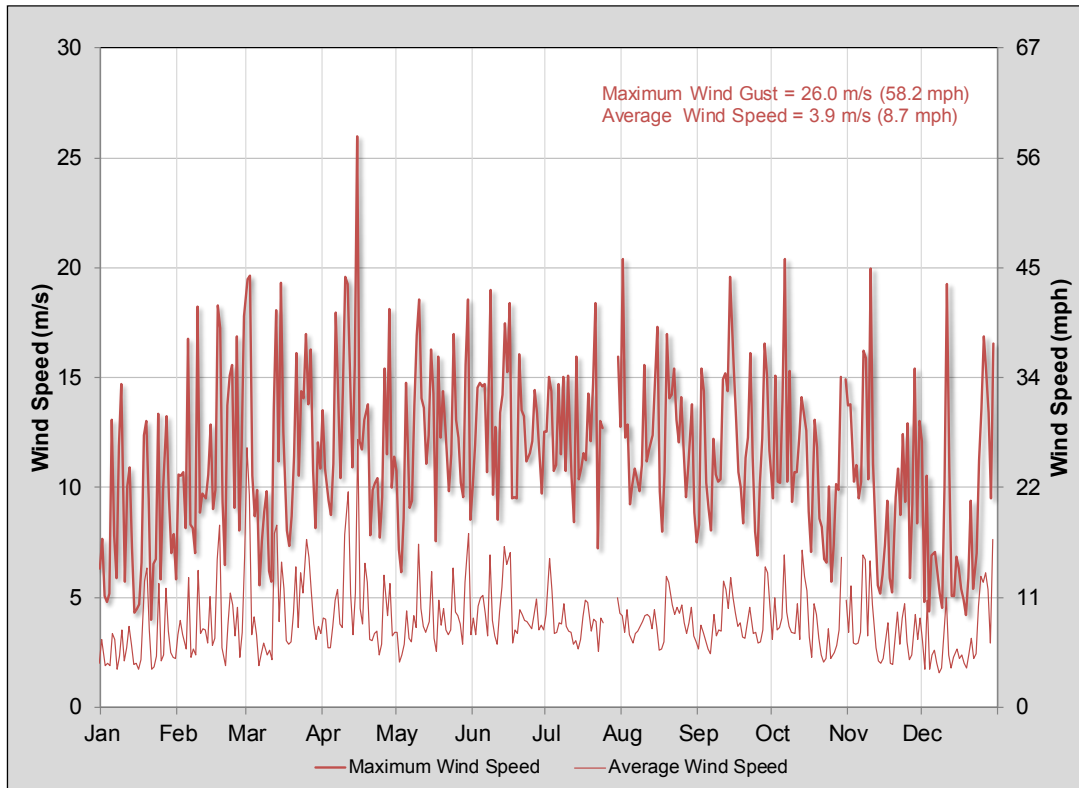


Figure 4-16. Daily Wind Speed at the Area 3 RWMS

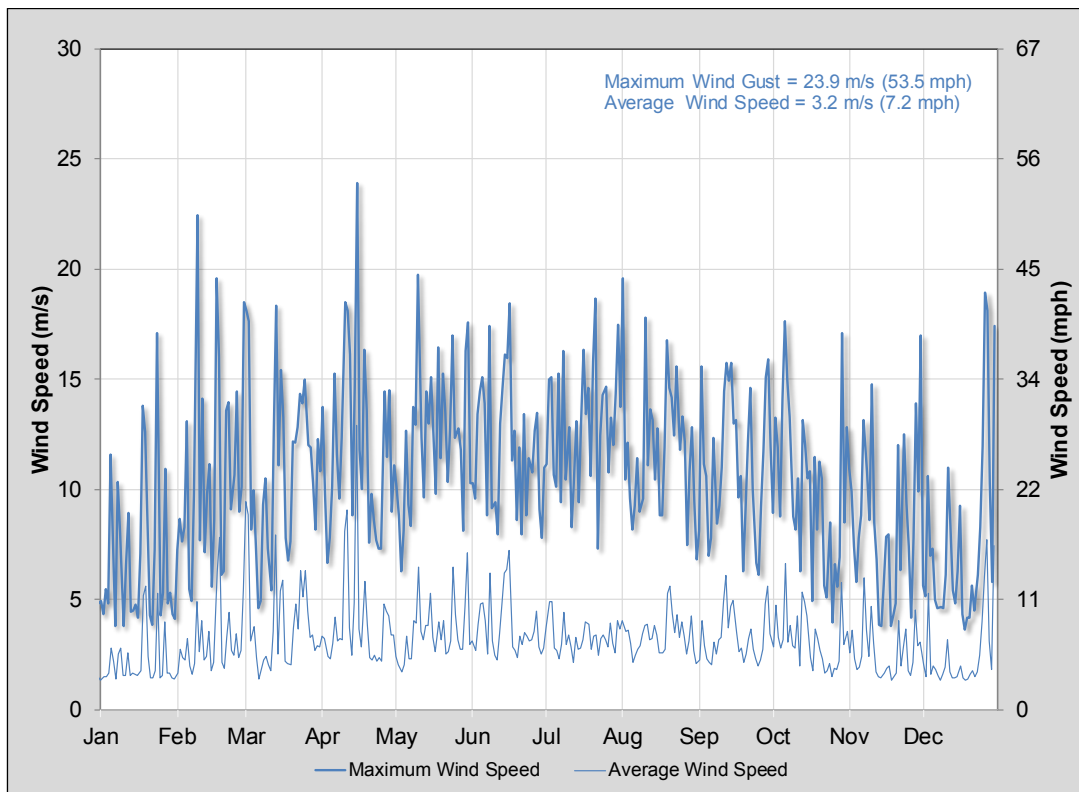


Figure 4-17. Daily Wind Speed at the Area 5 RWMS

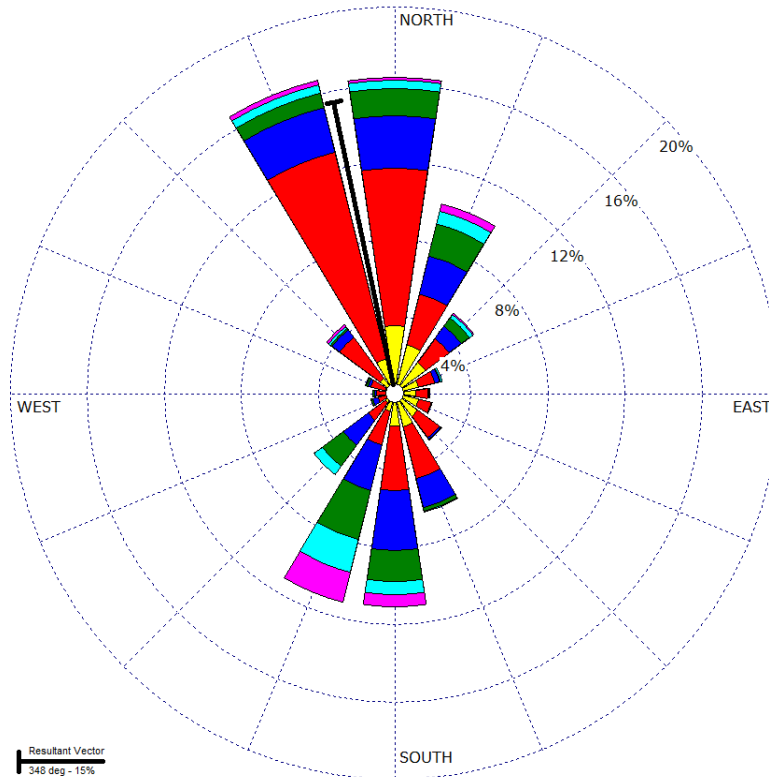


Figure 4-18. Wind Rose Diagram for the Area 3 RWMS

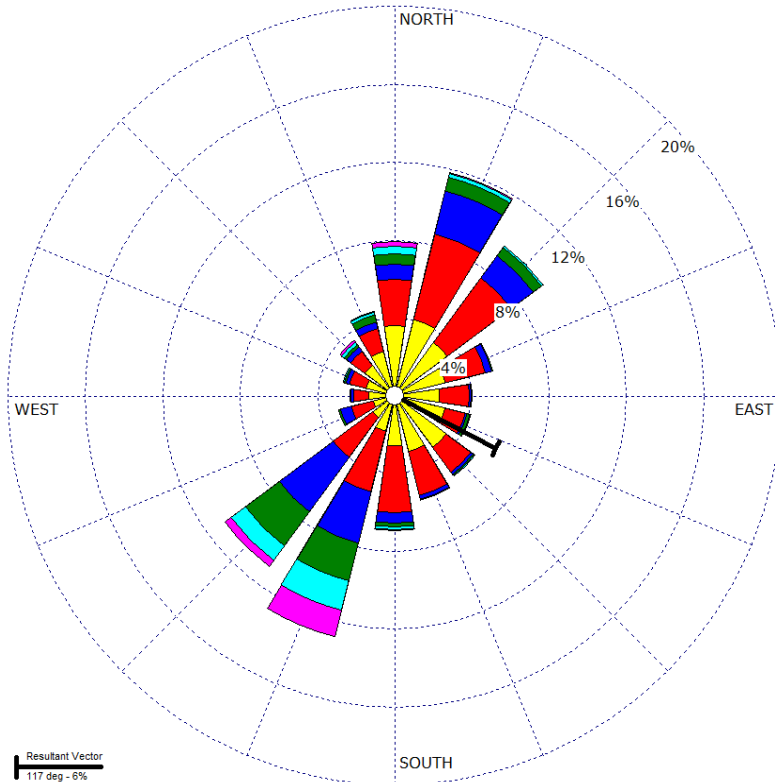


Figure 4-19. Wind Rose Diagram for the Area 5 RWMS

4.5.5 Precipitation

Rainfall at the Area 3 RWMS in 2018 was 41% below the 18-year average, totaling 85.1 mm (3.35 in.). The average annual precipitation measured at the Area 3 RWMS from 2001 through 2018 was 141 mm (5.55 in.). The maximum daily rainfall at the Area 3 RWMS during 2018 was 21.5 mm (0.856 in.) on January 9. Figure 4-20 compares the highest, lowest, average, and 2018 precipitation amounts for the last 18 years in Area 3. Rainfall in January was slightly above average; the spring and summer was average; and the end of the year was dryer than normal. Precipitation was measured on 35 days during 2018 at the Area 3 RWMS.

Rainfall at the Area 5 RWMS in 2018 was 39% below the 23-year average, totaling 74.5 mm (2.93 in.). The average annual precipitation measured at the Area 5 RWMS from 1996 through 2018 was 120 mm (4.72 in.). The maximum daily rainfall at the Area 5 RWMS during 2018 was 13 mm (0.51 in.) on January 9. Figure 4-21 compares the highest, lowest, average, and 2018 precipitation amounts for the last 23 years in Area 5. Rainfall in January was above average; the spring was dry; the summer was about average; and the end of the year was dryer than normal. Precipitation was measured on 30 days during 2018 at the Area 5 RWMS.

Historical precipitation data recorded at BJY (located about 3 km [2 mi] northwest of the Area 3 RWMS) and at the Area 3 RWMS are shown in Figure 4-22. The BJY station is a Meteorological Data Acquisition (MEDA) station operated by the Air Resources Laboratory, Special Operations and Research Division (ARL/SORD). The 58-year average annual precipitation at BJY from 1961 to 2018 was 159 mm (6.26 in.) (ARL/SORD 2019). Historical precipitation data recorded at the Well 5B station (located about 5.5 km [3.4 mi] south of the Area 5 RWMS) and at the Area 5 RWMS are provided in Figure 4-23. The Well 5B station is also an ARL/SORD MEDA station. The 55-year average annual precipitation at Well 5B from 1964 to 2018 was 122 mm (4.80 in.) (ARL/SORD 2019).

4.5.6 Reference Evapotranspiration

The calculated 2018 ET_{ref} at the Area 3 RWMS was 1500 mm (58.9 in.) and at the Area 5 RWMS was 1600 mm (63.0 in.). ET_{ref} is the rate at which readily available soil water is removed from a uniform surface of dense, actively growing vegetation. Crop coefficients are used to convert ET_{ref} to potential ET rates (Allen et al. 2005). ET_{ref} is calculated using a modified version of the radiation-based equation of Doorenbos and Pruitt (1977). The equation calculates ET_{ref} from hourly measurements of solar radiation, air temperature, relative humidity, wind speed, and barometric pressure. This method provides results similar to the Penman Equation that was previously used for the data reports through 2001 (Campbell 1977). The Doorenbos and Pruitt equation reduces data input requirements because no net radiation data are used. The ratio of ET_{ref} to precipitation in 2018 at the Area 3 RWMS was 17.6, and the ratio of ET_{ref} to precipitation in 2018 at the Area 5 RWMS was 21.5.

2018 Waste Management Monitoring Report
Area 3 and Area 5 Radioactive Waste Management Sites

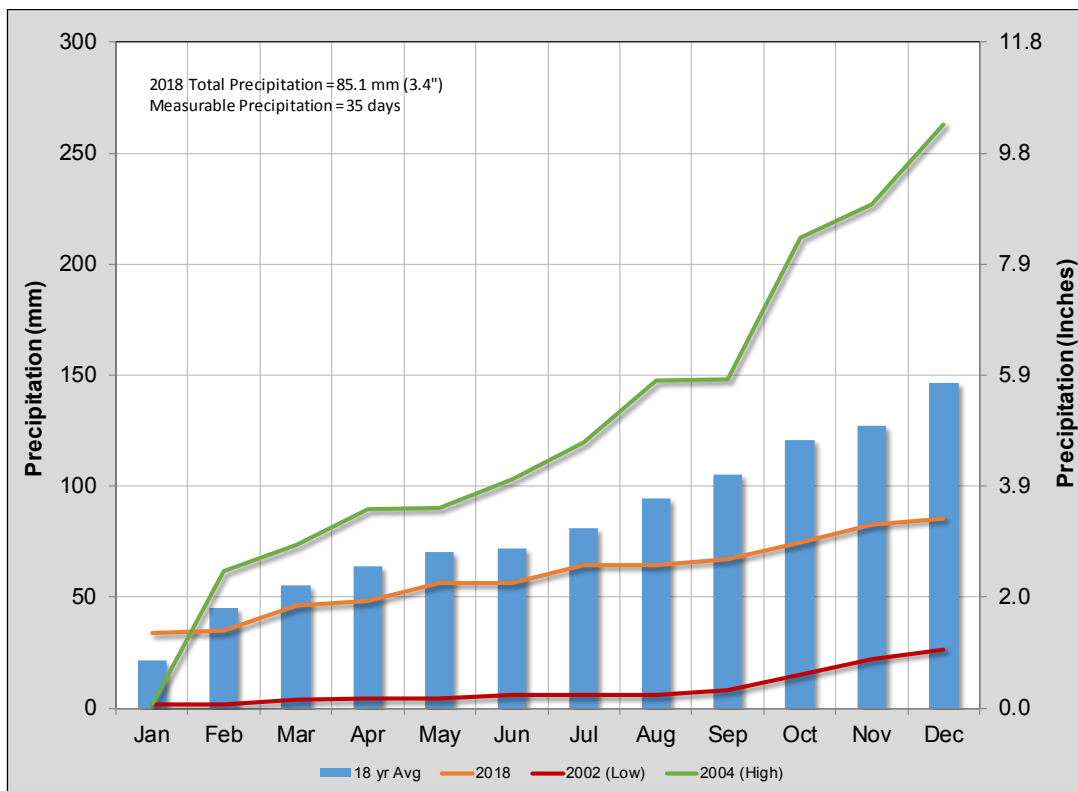


Figure 4-20. Precipitation at the Area 3 RWMS

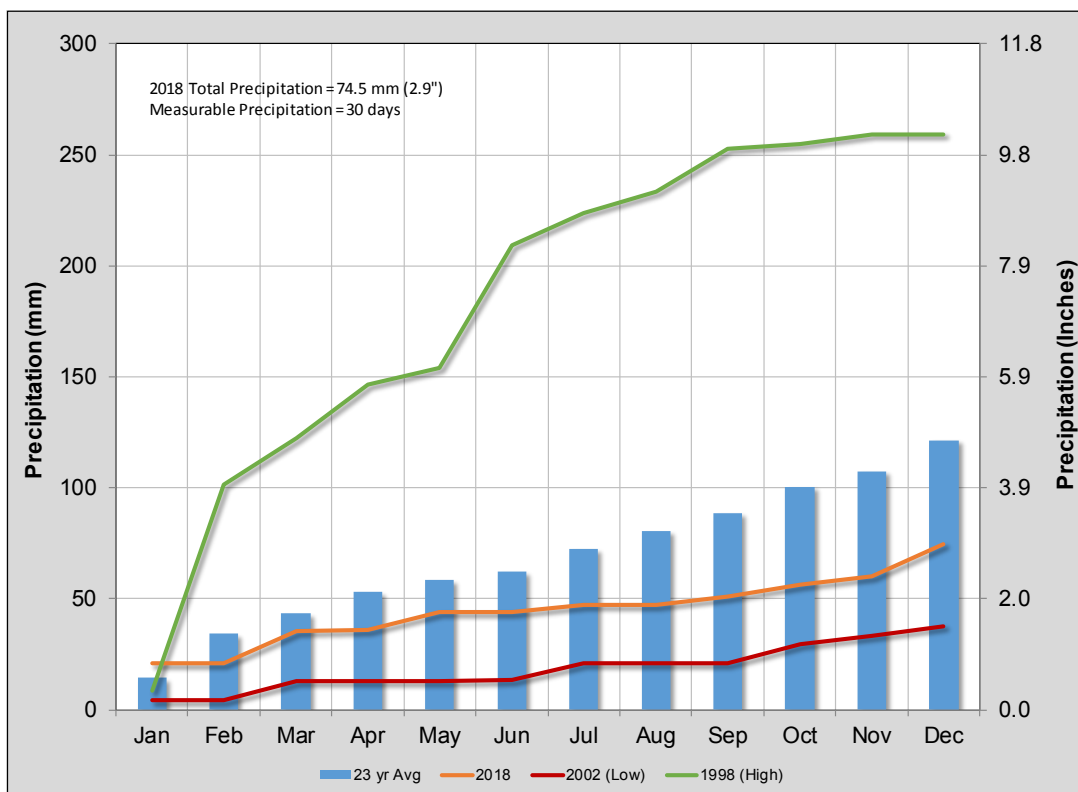


Figure 4-21. Precipitation at the Area 5 RWMS

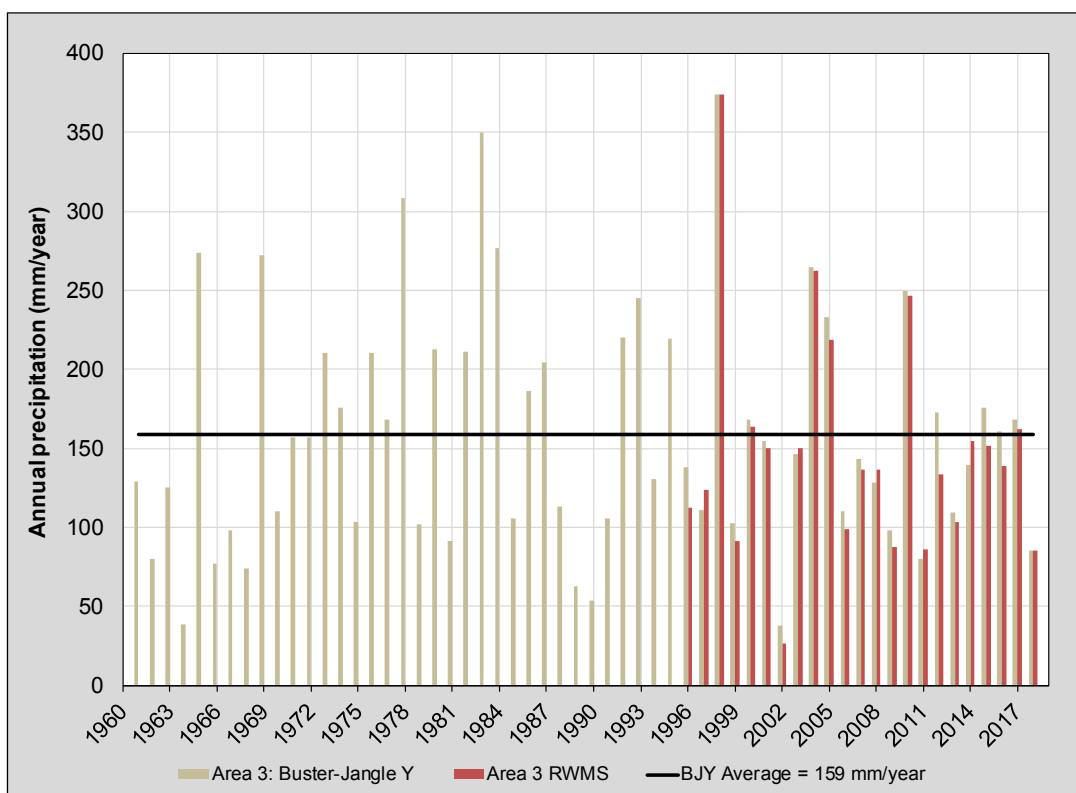


Figure 4-22. Historical Precipitation Record for Buster-Jangle Y and Area 3 RWMS

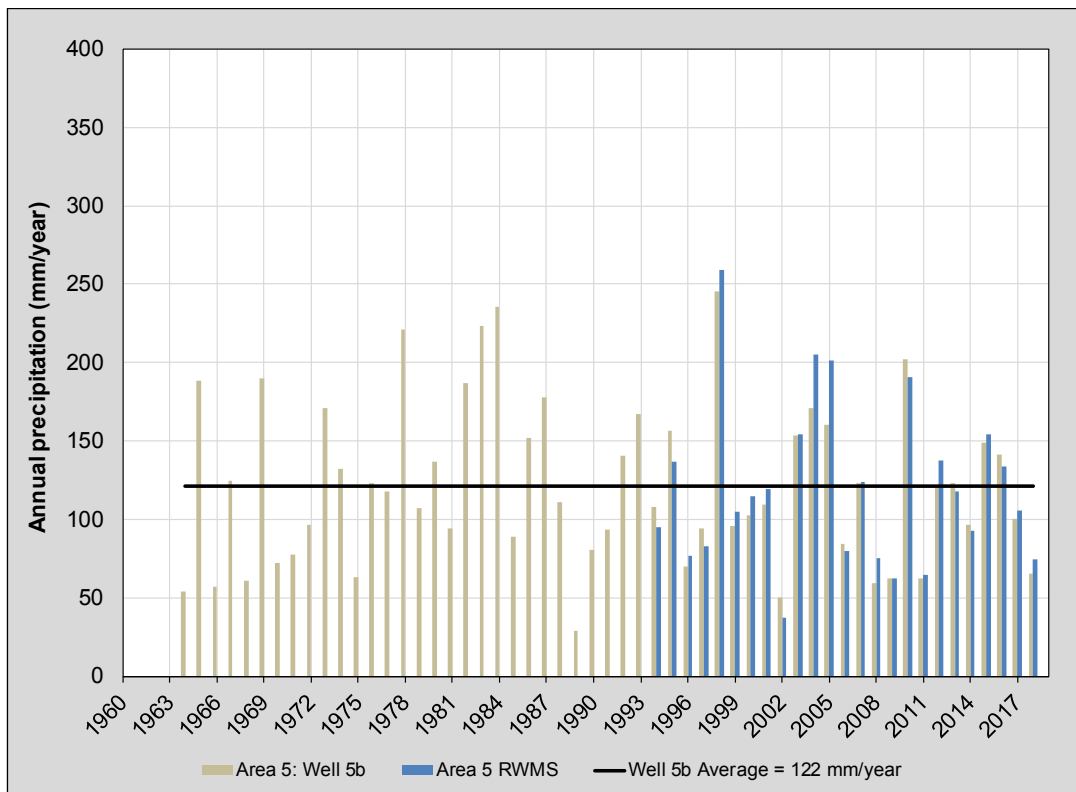


Figure 4-23. Historical Precipitation Record for Well 5B and Area 5 RWMS

4.6 VADOSE ZONE MONITORING DATA

4.6.1 Monitoring Strategy

Vadose zone monitoring is conducted at the Area 3 and Area 5 RWMSs to demonstrate compliance with DOE O 435.1 (DOE 2001b) and confirm the assumptions in the PA for each RWMS (e.g., hydrologic conceptual models, including soil water contents, flux rates and directions, and volatile radionuclide releases). Vadose zone monitoring is also performed to detect changing trends in performance, provide added assurance to PA conclusions regarding facility performance, evaluate the performance of operational waste covers, and confirm the PA performance objective of protecting groundwater resources.

The design of the current vadose zone monitoring program at the RWMSs is based on an understanding of the vadose zone system acquired through extensive characterization studies (BN 1998, 2005a, 2005b; Blout et al. 1995; Reynolds Electrical & Engineering Co., Inc., 1993a, 1993b; Shott et al. 1997, 1998; Tyler et al. 1996) and modeling studies (Levitt et al. 1999; Desotell et al. 2006, 2007). The objectives of the vadose zone monitoring program are accomplished, in part, by measuring water balances at each RWMS. Water balance studies involve using meteorology data to calculate ET_{ref} values (the driving force of upward flow), directly measuring ET and bare-soil E at the RWMS lysimeter facilities, and measuring soil water content and soil water potential in waste cell covers and floors using automated waste cover monitoring systems.

4.6.2 Area 5 Weighing Lysimeter Facility

The Area 5 Weighing Lysimeter Facility consists of two precision weighing lysimeters located about 400 m (1,310 ft) southwest of the Area 5 RWMS (Figure 3-2). Each lysimeter is an open-top steel box, measuring 2.0 m wide by 4.0 m long by 2.0 m deep (6.6 ft wide by 13 ft long by 6.6 ft deep), filled with soil, and mounted on a sensitive scale. Weight changes of each lysimeter are continuously monitored using an electronic load cell. Each load cell can measure approximately 0.1 mm (0.004 in.) of precipitation or ET. One lysimeter is vegetated with the native plant species *Larrea tridentata* (creosote bush), *Lycium pallidum* (pale desert thorn), and *Schismus arabicus* (Arabian schismus) at the approximate density of the surrounding desert. The other lysimeter is kept bare to simulate the bare operational waste covers at the Area 5 RWMS. The lysimeters have provided surface water balance data at the Area 5 RWMS since March 1994.

The weighing lysimeter data represent a simplified water balance. The change in soil water storage is equal to precipitation minus E (on bare lysimeters) or ET (on vegetated lysimeters). The water balance is simplified because no drainage can occur through the solid bottoms of the lysimeters and because a 2.5 cm (0.98 in.) lip around the edge of the lysimeters prevents run-on and runoff. Total soil water storage for the period of January 1, 1995, through December 31, 2018, is provided in Figure 4-24.

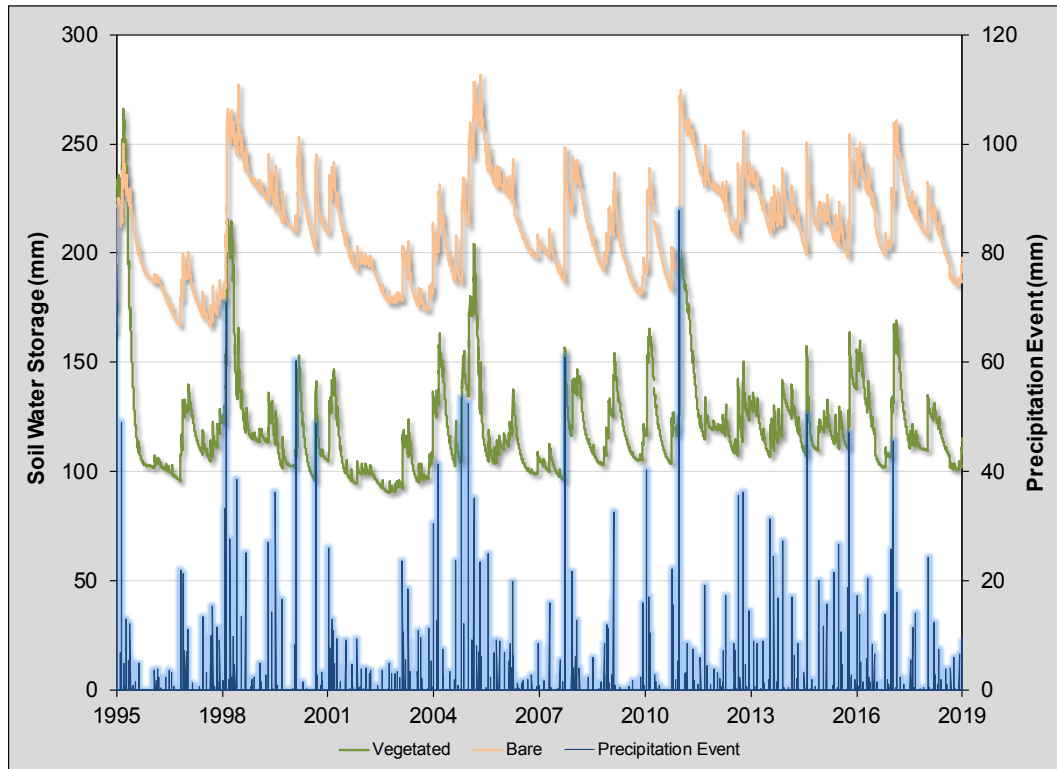


Figure 4-24. Weighing Lysimeter Data from January 1995 thru December 2018

The vegetated lysimeter is considerably drier than the bare-soil lysimeter despite the small number of plants on the vegetated lysimeter. Typically, the vegetated lysimeter has 10 to 15% plant cover. Cover was measured for both the vegetated and bare-soil weighing lysimeters on May 23, 2018, using an ocular projection device. Plant cover on the vegetated lysimeter consisted of 4 shrubs (two *Larrea tridentate* [creosote bush] and two *Lycium pallidum* [pale desert thorn]) and roughly 25 small annual grasses (*Schismus arabicus* [Arabian schismus]). The *Ambrosia dumosa* (white bursage) planted in 2017 did not survive into 2018. The results are summarized in Table 4-4.

Table 4-4. Weighing Lysimeters Percent Cover

Lysimeter	Plant Cover (percent)	Bare (percent)	Gravel (percent)	Litter (percent)
Vegetated	10	30	52	8
Bare Soil	0	15	77	8

The average soil water storage depth in the vegetated lysimeter from January 1, 1996, through December 31, 2018, was 119 mm (4.69 in.). This is equivalent to an average volumetric water content (VWC) of 6.0%. For the same period, the average soil water storage depth in the bare lysimeter was 212 mm (8.35 in.), which is equivalent to an average VWC of 10.6%. During 2018, the average soil water storage depth in the vegetated lysimeter was 113 mm (4.45 in.), and the average water storage depth in the bare lysimeter was 202 mm (7.95 in.). Rains in late winter and early spring promote plant growth, which removes water by ET. In summer, the

vegetated lysimeter dries out and plant growth and ET both slow. Eventually, E from the bare lysimeter exceeds ET from the vegetated lysimeter in the summer due to the higher water content in the bare lysimeter.

No water has ever accumulated at the bottom of the vegetated lysimeter. Heavy precipitation during late fall and winter combined with low E rates and higher initial water contents may result in water accumulation at the bottom of the bare lysimeter. Suction of -8.0 kPa (-1.2 PSI) was applied to the porous suction candles on the bottom of the bare lysimeter on May 5–June 19, 2008; March 2–May 12, 2009; and February 3–April 27, 2010. No water effluent was collected from the suction candles during these periods. Long-term numerical simulations (30 years) using a unit gradient bottom boundary estimate the amount of drainage that would have occurred if water could drain from the lysimeters. These simulations indicate an average of 1 cm (0.4 in.) per year of water reaches the bottom of the bare lysimeter, and essentially no water reaches the bottom of the vegetated lysimeter (Desotell et al. 2006).

During 2018, E from the bare lysimeter was 98.1 mm (3.86 in.) and ET from the vegetated lysimeter was 83.2 mm (3.28 in.). Water content in the vegetated lysimeter stayed about the same during 2018 because annual ET from the vegetated lysimeter was about equal to the 82.2 mm (3.24 in.) of precipitation. Water content in the bare lysimeter decreased during 2018 because the annual E from the bare lysimeter was greater than the precipitation.

Figure 4-25 shows the cumulative precipitation (blue) and the calculated cumulative ET (green) and E (orange) for the lysimeters during 2018. It also plots the storage in the vegetated lysimeter (purple) and the storage in the bare lysimeter (red). It shows that at the end of the year the ET equaled the precipitation and that E exceeded the precipitation. This can be explained by the bare lysimeter having more easily available water to evaporate, compared to the drier vegetated lysimeter.

Monthly precipitation was less than ET and E in all but January, November, and December, thus reducing the water content in each lysimeter except for those three months. May was the only month where ET exceeded E, thus it is likely the plants were in full growth due to adequate precipitation and the plant roots extracted water stored deeper in the lysimeter as compared to water evaporated from just the top (Figure 4-26).

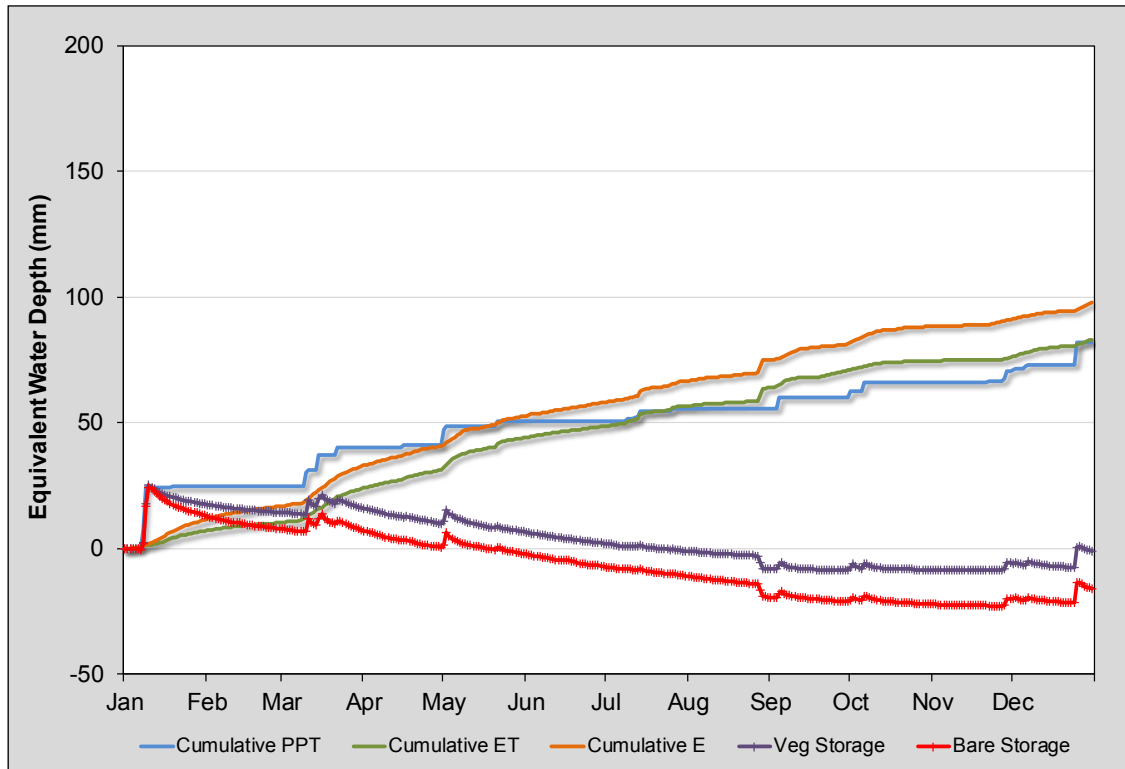


Figure 4-25. Precipitation, ET, E, and Storage for the Weighing Lysimeters

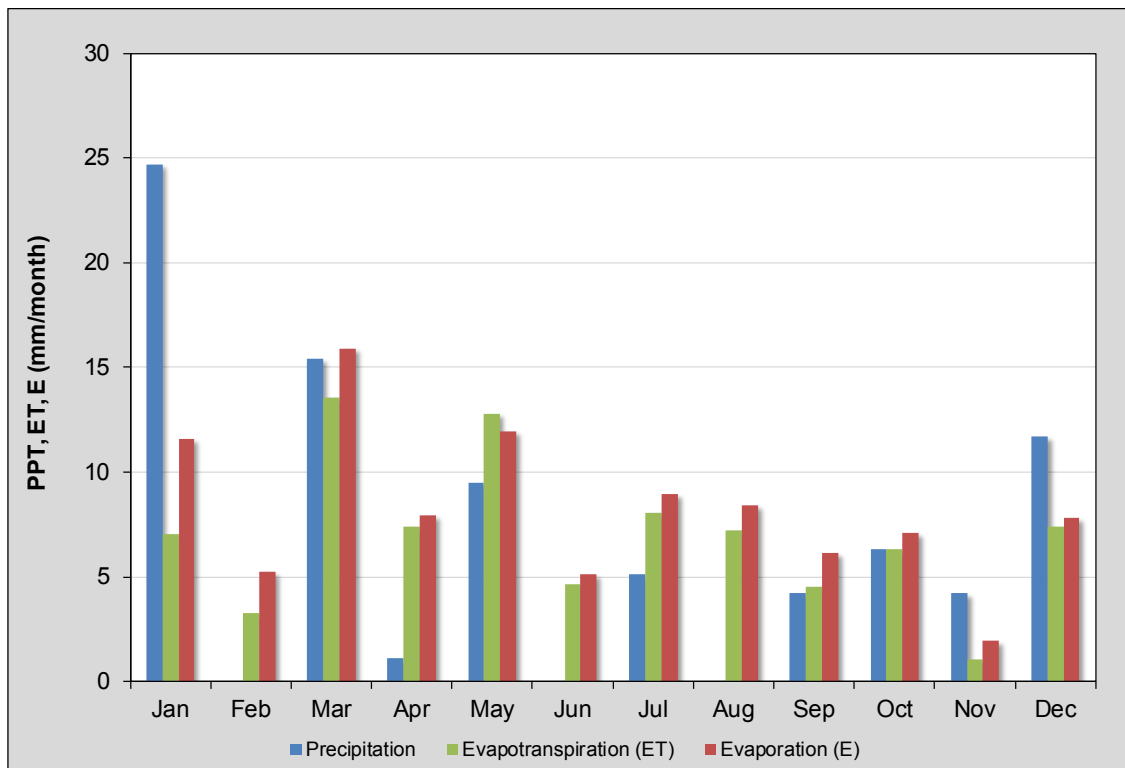


Figure 4-26. Monthly Precipitation, E, and ET

4.6.3 Automated Waste Cover Monitoring System

In 1998, time-domain reflectometry (TDR) probes were buried 1.2 m (4.0 ft) beneath the floor of open Cell 5 at the Area 5 RWMS. The four probes are adjacent to the Cell 5N and Cell 5S monitoring locations. At each monitoring location, one probe is buried near the centerline and one probe is buried near the eastern edge (Figure 3-2). Approximately 4.4 m (14 ft) of waste and approximately 2.4 m (7.9 ft) of cover were placed above these probes during disposal. The depth of these probes is now approximately 7.9 m (26 ft).

Measured VWC in the floor of Cell 5 has remained constant at approximately 10% since measurements began in early 1999 (Figure 4-27). The near constant measured water content indicates that no moisture has percolated to 1.2 m (3.9 ft) below the waste. Data are missing in 2011 due to the construction of the final cover. Cell 5 also has a nest of probes in the cover above the waste in two locations. The original probes in the temporary cover above the waste were abandoned and left in place, and new probes were installed on the final cover in December 2011.

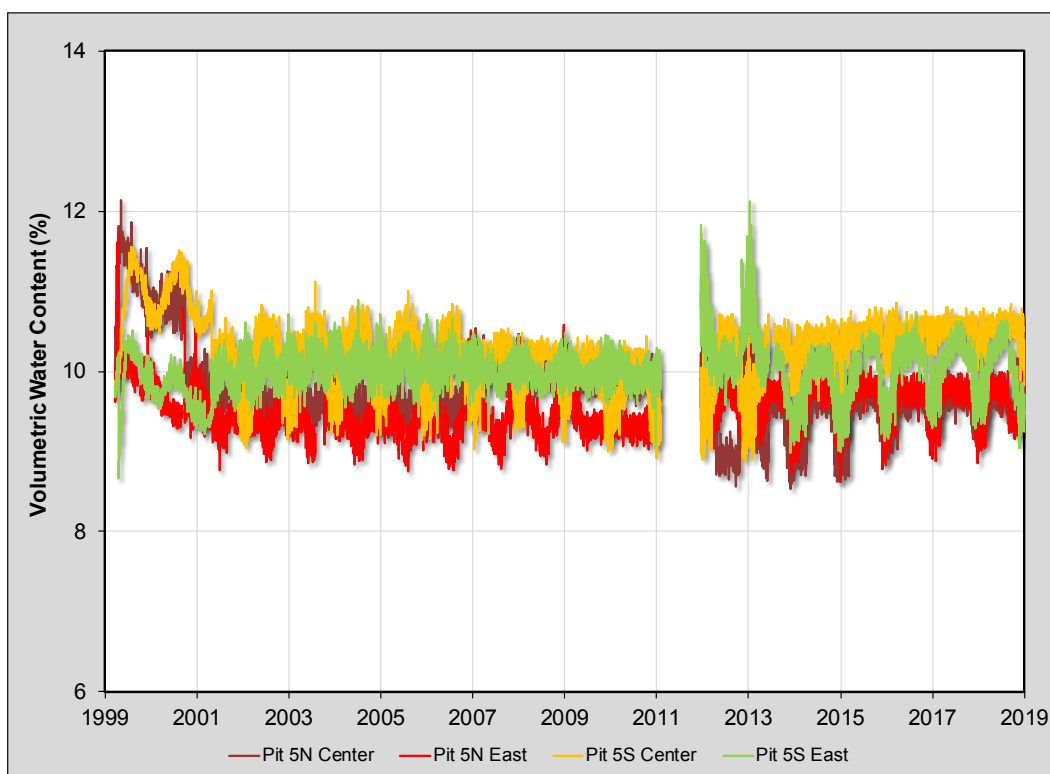


Figure 4-27. Soil Water Content in the Cell 5 Floor

TDR probes were installed in the final covers of the 92-Acre Area after cover construction was completed. Moisture monitoring began at Cell 1, Cell 3W, Cell 5N, and Cell 5S by December 2011. Eight vertically arranged TDR probes were installed at each of four locations at depths ranging from 15 to 180 cm (5.9 to 71 in.). The measured VWC profiles are similar at the four locations. Measured VWC values for Cell 5N are shown in Figure 4-28. From January 2012 to June 2012, 97 mm (3.8 in.) of water was applied to help establish vegetation, and the VWC approached 10%. Once irrigation stopped, the VWC below 45 cm (18 in.) decreased and settled around 7% until late 2015. In 2015, precipitation events in July wetted the soil to 45 cm (18 in.), and in September, 46 mm (1.8 in.) of precipitation wetted the soil to 180 cm (71 in.), shown by the slightly rising purple line. In January 2018, 21 mm (0.81 in.) of precipitation wetted the top 30 cm (12 in.) of Pit 5N. Results were similar at the other three moisture monitoring stations in the 92-Acre Area, and there was no wetting below 30 cm (12 in.).

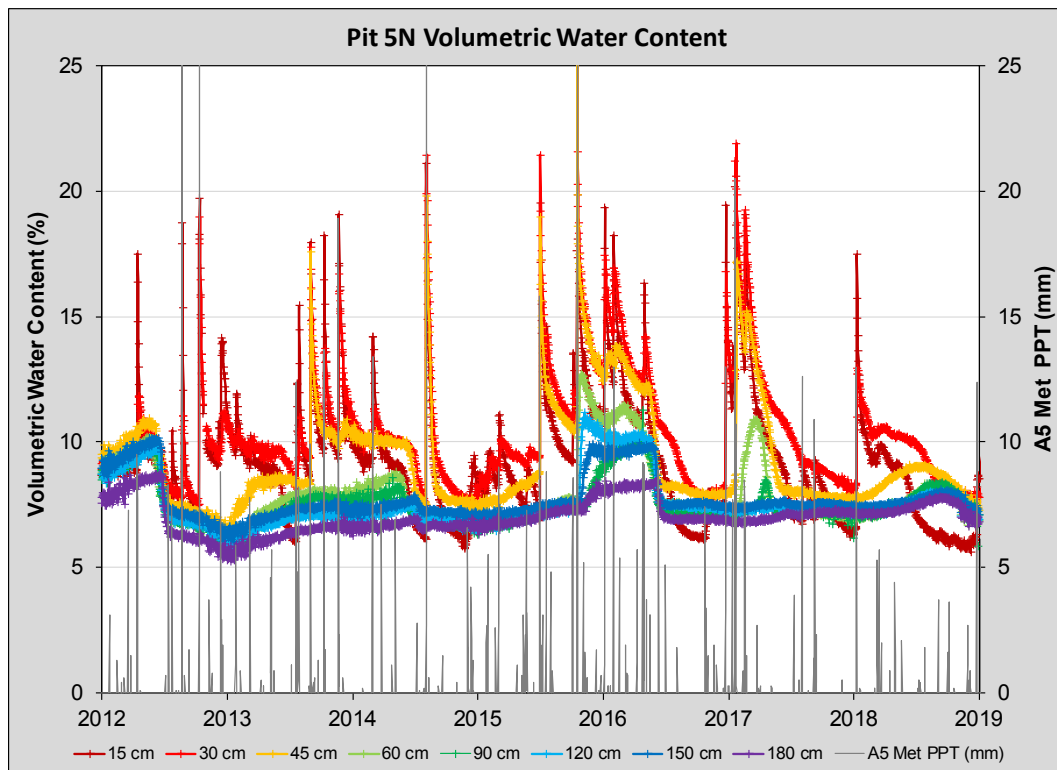


Figure 4-28. Soil Water Content in the 92-Acre Area Cover at Cell 5N

In March 2018, three new vadose moisture monitoring stations were constructed on Cells 13, 17, and 20. The stations have three sensors, two TDR probes, and 1 heat dissipation probe buried at eight locations from 15 cm (5.9 in.) to 180 cm (71 in.), the same as the other existing stations. All three stations were collecting data by June 1, 2018. The final cover for these cells has not been installed as of the end of 2018.

Four strontium-90 RTGs were disposed at Cell 5 on September 27, 2007. The power output of all four RTGs combined is approximately 450 watts. Area 5 RWMS disposal requirements are that RTG surface temperatures remain below 300°C (572°F), soil temperatures within 2.0 m (6.6 ft) of the surface remain less than 100°C (212°F), and temperatures in LLW adjacent to the RTGs stay below 38°C (100°F). Platinum resistance temperature detectors (RTDs) were installed to measure vertical and horizontal temperature profiles around each RTG. RTDs in the vertical profile were placed directly over the RTG up to 400 cm (13 ft) above the RTG. The top of the RTG is approximately 550 cm (18 ft) below the soil surface. RTDs in the horizontal profile were placed to the side of the same RTG up to 400 cm (13 ft) away from it. The RTDs in the horizontal profile are approximately 550 cm (18 ft) deep. Figure 4-29 provides the measurements from the vertical temperature profile above the RTG. Locations are given as the distance above the RTG followed by the depth from the soil surface in parentheses. Since about 2012, temperatures at the top of the RTD and approximately 550 cm (18 ft) below the ground surface have a seasonal fluctuation but stay below 110°C (230°F). Temperature measurements 270 cm (8.9 ft) above the RTG and approximately 280 cm (9.2 ft) below the ground surface are not affected by the heat flux from the RTGs.

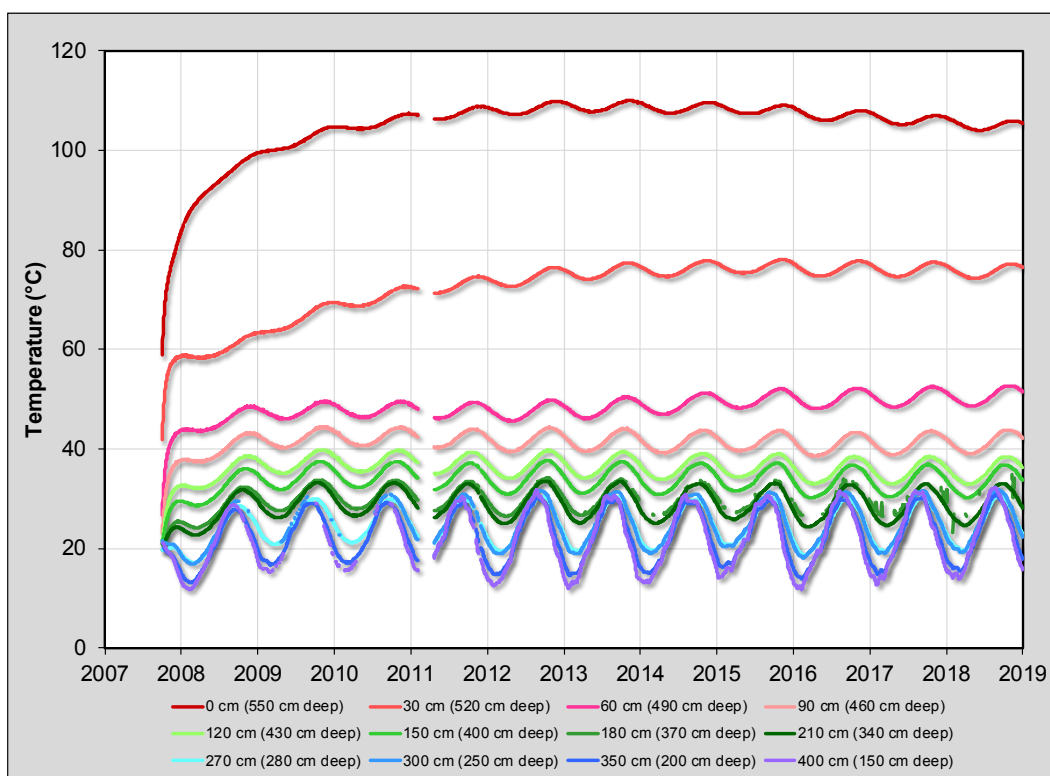


Figure 4-29. Temperatures above an RTG at Cell 5

In December 2000, TDR probes were installed during construction of the final vegetated cover of the U-3ax/bl waste disposal unit at the Area 3 RWMS (Figure 3-1). Eight vertically arranged TDR probes were installed at four locations at depths ranging from 30 to 240 cm (1.0 to 7.9 ft). Measured soil water content values for one location (West Nest B) in the U-3ax/bl waste cover are shown in Figure 4-30. From 2001 to 2010, the TDR data indicate that the soil water content in the cover generally decreased over time as the vegetation on the cover grew. A series of precipitation events in early 2010 caused wetting to 90 cm (3 ft), and another event in late 2010 caused wetting down to 120 cm (3.9 ft). Precipitation in late 2015 and into 2016 caused wetting down to 150 cm (4.9 ft), as shown by the green line in Figure 4-30 reaching 15% VWC. 2018 was a dry year and even the 30-cm (1-ft) probes showed minimal wetting. The annual variation is most likely a temperature effect.

Vegetation is critical to the effectiveness of the U-3ax/bl cover. In the native environment, about 12% of the surface area is covered by plant material. Obtaining 12% vegetative cover on the soil caps is dependent upon the seed germination success and seedling survival of native plants seeded or transplanted onto the cover. The dominant perennial plant on the U-3ax/bl cover is *Atriplex confertifolia* (shadscale saltbush), which accounted for 12.2% of the vegetation cover in 2014. A quantitative plant survey at the U-3ax/bl cover was not done in 2018, and the interval of vegetation surveys was increased from annually to every 5 years. The next plant survey will be conducted in 2019.

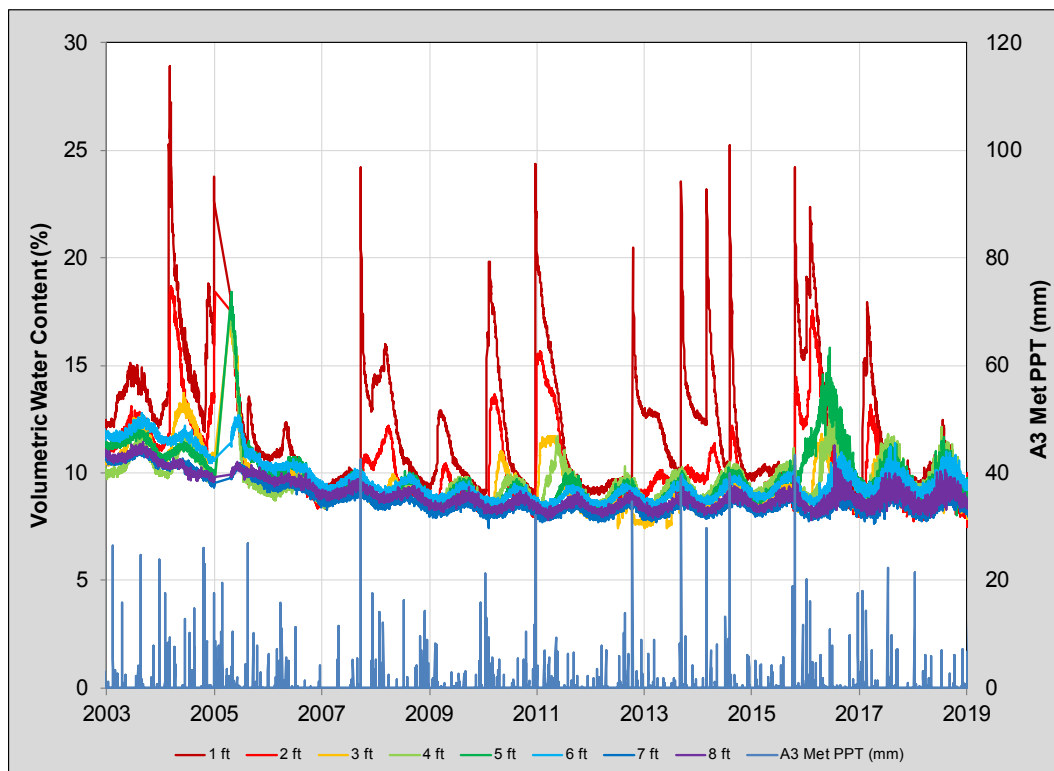


Figure 4-30. Soil Volumetric Water Content in the U-3 ax/bl Cover

4.6.4 Area 3 Drainage Lysimeter Facility

The Area 3 Drainage Lysimeter Facility is immediately northwest of the U-3ax/bl waste disposal unit at the Area 3 RWMS (Figure 3-1). This facility is designed to collect saturated gravity drainage from eight lysimeters measuring 3.1 m (10 ft) in diameter by 2.4 m (7.9 ft) deep. The lysimeters are filled with native soil packed to mimic the U-3ax/bl soil cover. Each lysimeter has eight TDR probes to measure moisture content depth profiles, paired with eight heat dissipation probes to measure soil water potential depth profiles. The probes are installed at 7 cm (0.23 ft), 15 cm (0.5 ft), 30 cm (1 ft), 60 cm (2 ft), 90 cm (3 ft), 120 cm (4 ft), 180 cm (6 ft), and 240 cm (8 ft) deep. Measured water content values at the bottom of the lysimeters and drainage from the lysimeters provide an indirect measure of potential drainage from the U-3ax/bl soil cover. The lysimeter facility was constructed to provide data needed to reduce uncertainty in the expected performance of monolayer ET closure cover under various surface vegetation treatments and increased rainfall.

There are three surface vegetation treatments subject to two climate treatments on the lysimeters. The three surface vegetation treatments are bare soil, invader species (primarily *Bromus tectorum* [cheatgrass], *Halogeton glomeratus* [halogeton], and *Eriogonium deflexum* [flatcrown buckwheat]), and native species (primarily *Krascheninnikovia lanata* [winterfat], *Ephedra nevadensis* [Nevada jointfir], and *Elymus elymoides* [squirreltail grass]). The climate treatments are natural precipitation and 3-times natural precipitation. The 3-times natural precipitation lysimeters receive natural precipitation and are irrigated with an amount equal to 2 times natural precipitation.

The 2018 lysimeter treatments, precipitation, irrigation, and drainage are summarized in Table 4-5. The eight lysimeters are identified as Lysimeter A through Lysimeter H. Lysimeter A is bare soil with natural precipitation; Lysimeter B is bare soil with 3-times natural precipitation; Lysimeter C is invader species with natural precipitation; Lysimeter D is invader species with 3-times natural precipitation; Lysimeters E and G are native species with natural precipitation; and Lysimeters F and H are native species with 3-times natural precipitation.

The 2018 precipitation at the drainage lysimeters was 89 mm (3.5 in.). The 2018 irrigation applied to Lysimeters B, D, F, and H was 161 mm (6.34 in.). The actual applied irrigation in 2018 was 18 mm (0.71 in.) short of the 3-times natural precipitation goal. The actual rate was 2.8-times natural precipitation. There were 229 liters (60 gallons) of drainage from Lysimeter B during 2018. The equivalent depth of this drainage is 31 mm (1.2 in.). Drainage from Lysimeter B started on January 4, 2018, and continued through October 9, 2018. The 2018 Lysimeter B drainage was 13% of total 2018 precipitation and applied irrigation.

There was no drainage from any other lysimeter during 2018. Drainage has only occurred from the irrigated lysimeters. Total cumulative drainage from the beginning of the measurements for each irrigated lysimeter is 208 cm (81.9 in.) from Lysimeter B, 17.4 cm (6.85 in.) from Lysimeter D, 28.4 cm (11.2 in.) from Lysimeter F, and 11 cm (4.3 in.) from Lysimeter H (Figure 4-31).

Plant cover was measured for each of the eight drainage lysimeters on May 23, 2018. The results are summarized in Table 4-6. On April 26, 2018, six *Atriplex canescens* (four-wing saltbush) were purchased from the Nevada Division of Forestry. Three were planted on plot E, two were planted on plot F, and one was planted on plot H. All six transplants survived and were growing when this report was completed.

Table 4-5. Area 3 Drainage Lysimeter Treatments in 2018

Lysimeter	Climate	Surface Vegetation	Precipitation and Irrigation (mm [in.])	Drainage (mm [in.])	Drainage (%)
A	Natural precipitation	Bare-soil	89 (3.5)	0 (0)	0
B	3-times natural precipitation	Bare-soil	250 (9.8)	31 (1.2)	13%
C	Natural precipitation	Invader species	89 (3.5)	0 (0)	0
D	3-times natural precipitation	Invader species	250 (9.8)	0 (0)	0
E	Natural precipitation	Native species	89 (3.5)	0 (0)	0
F	3-times natural precipitation	Native species	250 (9.8)	0 (0)	0
G	Natural precipitation	Native species	89 (3.5)	0 (0)	0
H	3-times natural precipitation	Native species	250 (9.8)	0 (0)	0

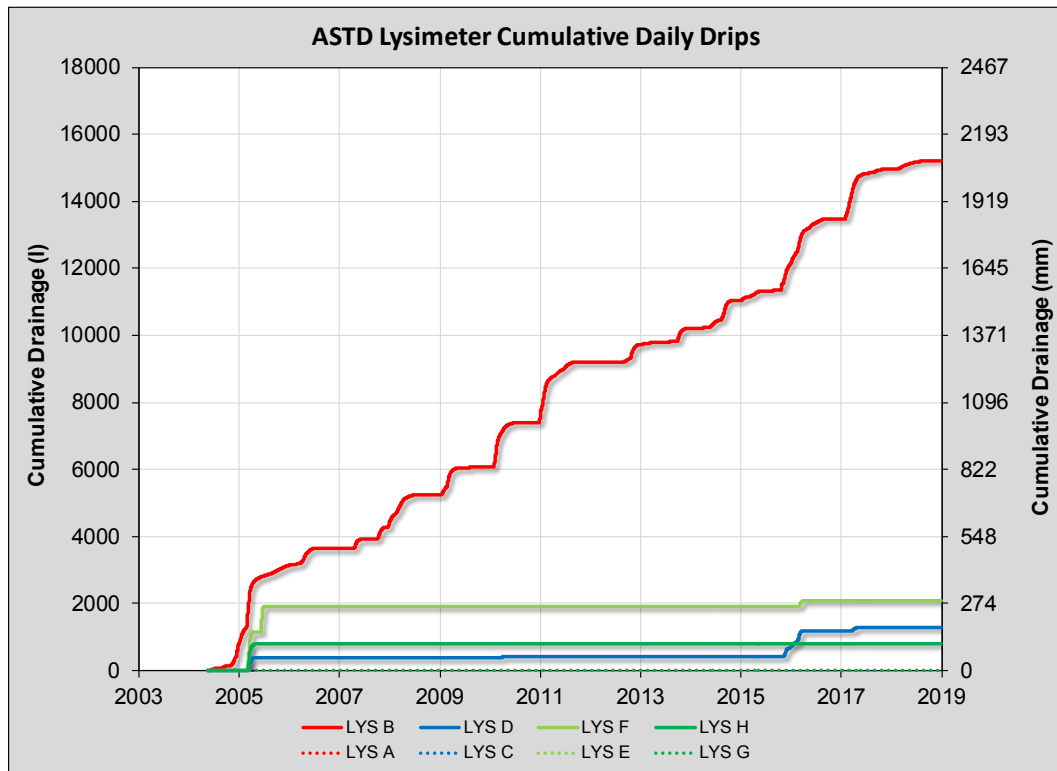


Figure 4-31. Cumulative Drainage from the Drainage Lysimeters

Table 4-6. Area 3 Drainage Lysimeter Percent Cover in 2018

Lysimeter	Plant Cover (percent)	Bare (percent)	Gravel (percent)	Litter (percent)
A	0	47.5	52.5	0
B	2.5	27.5	60	10
C	0	50	15	35
D	12.5	20	10	57.5
E	5	62.5	7.5	25
F	5	10	2.5	82.5
G	2.5	35	27.5	35
H	20	17.5	0	62.5

Figure 4-32 shows the total water storage for all eight lysimeters from 2009 through 2018. Water storage is calculated using TDR data. The two bare-soil lysimeters (Lysimeters A and B, blue lines) generally have the highest water storage. Evaporation and drainage are the only processes that remove water from these two lysimeters. The invader species (Lysimeters C and D, green lines) grow quickly in the spring, have shallow root systems, and transpire water before setting seed and dying in the early summer. The native species (Lysimeters E, F, G, and H, red and gold lines) mostly consist of perennial shrubs that grow year round and have deep, dense root systems that survive during periods of drought.

The bare-soil Lysimeter B (3-times precipitation) generally fluctuates between 60 and 70 cm (2.0 and 2.3 ft) of storage, while Lysimeter A (natural precipitation) fluctuates between 40 and 50 cm (1.3 and 1.6 ft) of storage. These simulate a bare-soil waste cover and only dry out to a certain depth. The invader species Lysimeter C (heavy green line) performed about the same as the native species lysimeters (heavy red and gold lines) at removing water, but invader Lysimeter D with 3-times precipitation (light green line) did not evapotranspire as much water as the native species lysimeters (light red and gold lines). This was especially evident in 2015 when the invader species on Lysimeter D were virtually non-existent from the summer of 2014 into the dry spring of 2015. This is shown by the Lysimeter D green line rising and eventually reaching a water storage level that produced drainage out of the bottom of the lysimeter. After the large September 2015 rain event, the native plant lysimeters with natural precipitation appeared to be performing much as they did after the other large rain events in the spring of 2010 and 2011 when they reached a storage depth above 30 cm (1.0 ft) and then after several months approached a storage depth of 20 cm (0.66 ft). 2018 was a dry year, and water storage declined in all the lysimeters.

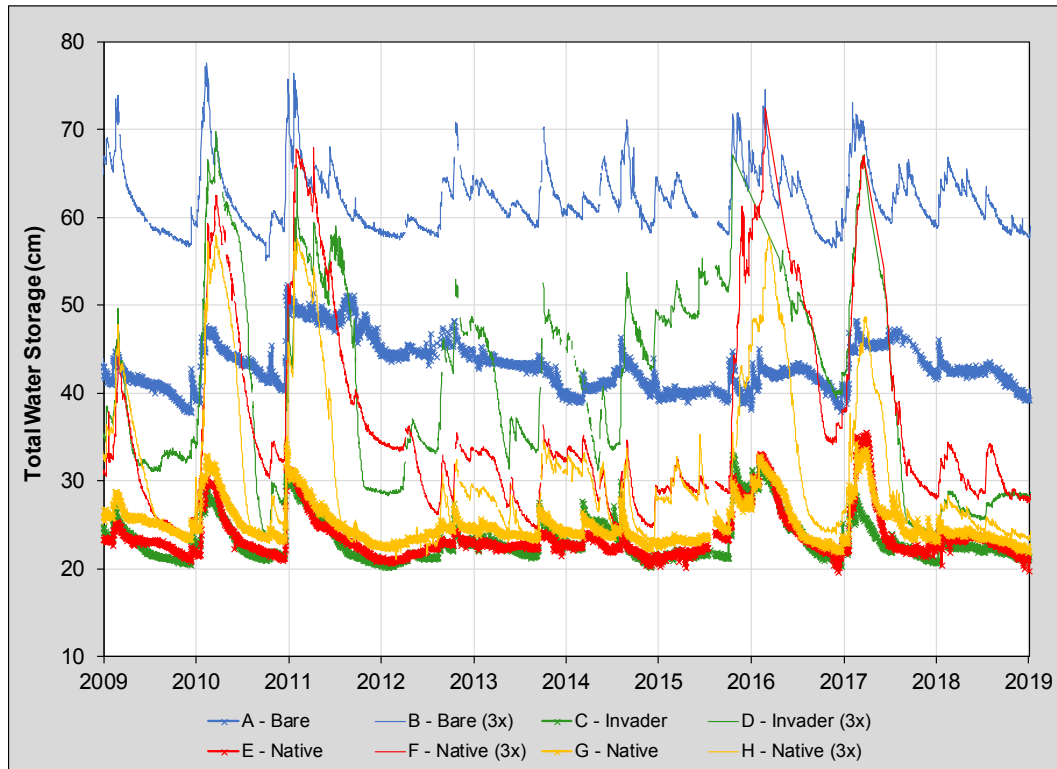


Figure 4-32. Soil Water Storage in the Drainage Lysimeters

4.7 WASTE COVER SUBSIDENCE

Subsidence monitoring is conducted to ensure that subsidence features are repaired to prevent the development of preferential water migration pathways through the waste covers and also to help ensure that vadose zone monitoring data are representative of the Area 3 and Area 5 RWMSs. Typically, as small depressions or cracks are observed in operational covers, they are filled before large subsidence features develop.

Visual inspections of the U-3ax/bl final ET cover were changed from quarterly in 2015 to twice per year in 2016 and checked for evidence of cracks, settling, erosion, and subsidence.

Inspections were performed on June 18 and December 10, 2018. During the June inspection, four areas of subsidence were noted and repaired on September 12, 2018. During the December inspection, five areas of subsidence were noted and repaired on January 23, 2019.

Seven subsidence markers were installed in the U-3ax/bl cover, and an initial elevation survey of these markers was completed in December 2000. Subsidence surveys were performed twice a year through March 2012, and the interval was increased to every 2 years after the March 2012 survey (U.S. Department of Energy, National Nuclear Security Administration Nevada Field Office 2014). The average subsidence at the 7 subsidence markers was 1.9 cm (0.75 in.), and the median subsidence was 1.5 cm (0.59 in.).

Quarterly inspections of the 92-Acre Area final ET covers include checking for evidence of cracks, settling, erosion, and subsidence. This covers are also inspected when more than 25 mm (1.0 in.) of precipitation occurs during a 24-hour period. Quarterly inspections were performed on March 14, June 18, September 10, and December 10, 2018. During the March inspection, subsidence was noted on three covers and repaired on April 19, 2018. During the

June inspection, subsidence was noted on three covers and repaired on August 23, 2018. During the September inspection, subsidence was noted on three covers and repaired on October 25, 2018. During the December inspection, subsidence was noted on three covers and repaired on February 6, 2019.

Fifty-two subsidence markers were installed in the 92-Acre Area covers, and an initial elevation survey of these markers was completed in January 2012. Subsidence was last measured at each marker on August 23, 2018. The average subsidence at the 52 subsidence markers was 2.3 cm (0.91 in.), and the median subsidence was 1.2 cm (0.47 in.).

4.8 BIOTA MONITORING DATA

Plants, animals, and soil excavated by ants or small mammals sampled on top of waste covers may be used to assess the integrity of radioactive waste containment. No biota samples were collected in 2018.

5.0 CONCLUSION

The 2018 environmental and operational monitoring data from the Area 3 and Area 5 RWMSs indicate that these facilities are performing as expected for the long-term isolation of buried waste. Direct radiation exposure data indicate a rate that is well below any dose of concern, and air monitoring data indicate that concentrations of radioactive materials in air remain below any concentrations of concern. Groundwater and vadose zone monitoring data indicate that the groundwater beneath the Area 5 RWMS is unaffected by the waste disposal operations. Vadose zone monitoring data indicate that vegetation prevents infiltrating precipitation from percolating deep into the soil by returning the moisture to the atmosphere by ET. Long-term vadose zone monitoring data from the weighing lysimeters indicate no drainage through the bottoms of the vegetated lysimeters. All 2018 monitoring data indicate that the Area 3 and Area 5 RWMSs are performing within expectations of the model and parameter assumptions for the facilities' PAs.

THIS PAGE INTENTIONALLY LEFT BLANK

6.0 REFERENCES

- Air Resources Laboratory, Special Operations and Research Division, 2018. *NOAA Air Resources Laboratory*. <http://www.sord.nv.doe.gov>. [Accessed June 4, 2018].
- Allen, R. G., I. A. Walter, R. L. Elliot, T. A. Howell, D. Itenfsu, M. E. Jensen, and R. L. Snyder, 2005. *The ASCE Standardized Reference Evapotranspiration Equation*. American Society of Civil Engineers.
- ARL/SORD, see Air Resources Laboratory, Special Operations and Research Division.
- Bechtel Nevada, 1998. *Hydrogeologic Characterization of the Unsaturated Zone at the Area 3 Radioactive Waste Management Site*. Volume 1: "Data Interpretations." Volume 2: Data." DOE/NV/11718--210. February 1998.
- Bechtel Nevada, 2001. *Closure Report for Corrective Action Unit 110: Area 3 RWMS U-3ax/bl Disposal Unit, Nevada Test Site, Nevada*. DOE/NV/11718--743. June 2001.
- Bechtel Nevada, 2003. *Nevada Test Site Routine Radiological Environmental Monitoring Plan*. DOE/NV/11718--804. June 2003.
- Bechtel Nevada, 2005a. *Site Characterization Data from the U-3ax/bl Exploratory Boreholes*. DOE/NV/11718--003-Rev1. August 2005.
- Bechtel Nevada, 2005b. *Site Characterization and Monitoring Data from Area 5 Pilot Wells*. DOE/NV/11718--1067. September 2005.
- Bechtel Nevada, 2006. *Characterization Report for the 92-Acre Area of the Area 5 Radioactive Waste Management Site, Nevada Test Site, Nevada*. DOE/NV/11718--1154. June 2006.
- Blout, D. O., D. P. Hammermeister, K. A. Zukosky, and K. D. Donnelson, 1995. *Site Characterization Data from Area 5 Science Boreholes, Nevada Test Site, Nye County, Nevada*. DOE/NV/11432--170. Reynolds Electrical & Engineering Co., Inc. February 1995.
- BN, see Bechtel Nevada.
- Campbell, G. S., 1977. *An Introduction to Environmental Biophysics*. Heidelberg Science Library. Springer-Verlag, New York.
- CFR, see U.S. Code of Federal Regulations.
- Cochran, J. R., W. E. Beyeler, D. A. Brosseau, L. H. Brush, T. J. Brown, B. Crowe, S. H. Conrad, P. A. Davis, T. Ehrhorn, T. Feeney, B. Fogleman, D. P. Gallegos, R. Haaker, D. Kalinina, L. L. Price, D. P. Thomas, and S. Wirth, 2001. *Compliance Assessment Document for the Transuranic Wastes in the Greater Confinement Disposal Boreholes at the Nevada Test Site*. Sandia Report SAND2001-2977. Sandia National Laboratories. September 2001.

- The Delphi Group and J. A. Cesare and Associates, 2012. *Evapotranspiration Cover for the 92-Acre Area Retired Mixed Waste Pits, Area 5 Waste Management Division, Nevada National Security Site, Final CQA Report*. DOE/NV/25946--1428, January 2012.
- Desotell, L. T., D. B. Hudson, V. Yucel, and J. T. Carilli, 2006. "Use of Long-Term Lysimeter Data in Support of Shallow Land Waste Disposal Cover Design." In: *Proceedings of the Waste Management '06 Conference*. February 26–March 2, 2006. Tucson, Arizona.
- Desotell, L. T., D. B. Hudson, D. Anderson, V. Yucel, G. Shott, G. L. Pyles, and J. T. Carilli, 2007. "Performance of Evapotranspirative Covers under Enhanced Precipitation: Preliminary Data." In: *Proceedings of the Waste Management '07 Conference*. February 26–March 1, 2007. Tucson, Arizona.
- Doorenbos, J., and W. O. Pruitt, 1977. *Guidelines for Predicting Crop Water Requirements*. FAO Irrigation and Drainage Paper No. 24, 2d ed. U.N. Food and Agricultural Organization. Rome, Italy.
- Goodrich, J. G., 2010. *Design of Revisions to the Evapotranspiration Cover for the 92-Acre Area: Area 5 Waste Management Division Retired Mixed Waste Pits Nevada National Security Site, Nevada*. October 2010.
- Hudson, D. B., D. Black, V. Yucel, G. Shott, and P. Arnold, 2015 "Vadose Zone Monitoring at the Radioactive Waste Management Sites at the Nevada National Security Site." In: *Proceedings of the Waste Management '15 Conference*. March 15–March 19, 2015. Phoenix, Arizona.
- Levitt, D. G., M. J. Sully, B. L. Dozier, and C. F. Lohrstorfer, 1999. "Determining the Performance of an Arid Zone Radioactive Waste Site through Site Characterization, Modeling, and Monitoring." In: *Proceedings of the Waste Management '99 Conference*. February 28–March 4, 1999. Tucson, Arizona.
- Levitt, D. G., and V. Yucel, 2002. "Potential Groundwater Recharge and the Effects of Soil Heterogeneity on Flow at Two Radioactive Waste Management Sites at the Nevada Test Site." In: *Proceedings of the 2002 International Groundwater Symposium*. March 25–28, 2002. Berkeley, California.
- Mission Support and Test Services, LLC, 2018. *Nevada National Security Site Environmental Report 2017*. DOE/NV/03624--0270. September 2018.
- Mission Support and Test Services, LLC 2019a. *Nevada National Security Site 2018 Data Report: Groundwater Monitoring Program, Area 5 Radioactive Waste Management Site*. DOE/NV/03624--0400. March 2019.
- Mission Support and Test Services, LLC 2019b. *National Emission Standards for Hazardous Air Pollutants – Radionuclide Emissions, Calendar Year 2018*. DOE/NV/03624--0521. June 2019.
- MSTS, see Mission Support and Test Services, LLC.
- National Security Technologies, LLC, 2007a. *Characterization Report Area 3 Radioactive Waste Management Site Nevada Test Site, Nevada*. DOE/NV/25946--080. March 2007.

- National Security Technologies, LLC, 2007b. *Closure Plan for the Area 3 Radioactive Waste Management Site at the Nevada Test Site*. DOE/NV/25946--289. September 2007.
- National Security Technologies, LLC, 2008. *Closure Plan for the Area 5 Radioactive Waste Management Site at the Nevada Test Site*. DOE/NV/25946--553. September 2008.
- NSTec, see National Security Technologies, LLC.
- Plannerer, H. N., 1996. *Siting Criteria for Angle Drilling Under the U-3ah/at Disposal Unit*. Los Alamos National Laboratory Report LA-UR-96-1679. May 13, 1996.
- Reynolds Electrical & Engineering Co., Inc., 1993a. *Hydrogeologic Data for Existing Excavations at the Area 5 RWMS, Nevada Test Site, Nye County, Nevada*. DOE/NV/11432--40. December 1993.
- Reynolds Electrical & Engineering Co., Inc., 1993b. *Hydrogeologic Data for Science Trench Boreholes at the Area 5 RWMS, Nevada Test Site, Nye County, Nevada*. December 1993.
- Shott, G. J., V. Yucel, M. J. Sully, L. E. Barker, S. E. Rawlinson, and B. A. Moore, 1997. *Performance Assessment/Composite Analysis for the Area 3 Radioactive Waste Management Site at the Nevada Test Site, Nye County, Nevada*. Revision 2.1. DOE/NV--491-REV 2.1. Bechtel Nevada. September 1997.
- Shott, G. J., L. E. Barker, S. E. Rawlinson, M. J. Sully, and B. A. Moore, 1998. *Performance Assessment for the Area 5 Radioactive Waste Management Site at the Nevada Test Site, Nye County, Nevada*. Revision 2.1. DOE/NV/11718--176. Bechtel Nevada. January 1998.
- Snyder, K. E., R. D. Van Remortel, D. L. Gustafson, H. E. Huckins-Gang, J. J. Miller, S. E. Rawlinson, and S. M. Parsons, 1995. *Surficial Geology and Landscape Development in Northern Frenchman Flat, Interim Summary and Soil Data Report*. DOE/NV/25946--466. Raytheon Services Nevada. September 1995.
- Soule, D. A., 2006. *Climatology of the Nevada Test Site*. Air Resources Laboratory, Special Operations and Research Division 2006-03. April 2006.
- Tyler, S. W., J. B. Chapman, S. H. Conrad, D. P. Hammermeister, D. O. Blout, J. J. Miller, M. J. Sully, and J. M. Ginanni, 1996. "Soil-Water Flux in the Southern Great Basin, United States: Temporal and Spatial Variations over the Last 120,000 Years." *Water Resources Research*. Vol. 32, No. 6, pp. 1481–1499.
- U.S. Code of Federal Regulations, 40 CFR §261.24, Toxicity Characteristic, 2003.
- U.S. Department of Energy, 2001a. DOE M 435.1 Chg 1, "Radioactive Waste Management Manual," June 2001.
- U.S. Department of Energy, 2001b. DOE O 435.1, Chg 1 "Radioactive Waste Management," August 2001.
- U.S. Department of Energy, 2011. Derived Concentration Technical Standard, DOE-STD-1196-2011. May 5, 2011.

2018 Waste Management Monitoring Report
Area 3 and Area 5 Radioactive Waste Management Sites

- U.S. Department of Energy, National Nuclear Security Administration Nevada Field Office, 2014. *Post Closure Report for the Closed Resource Conservation and Recovery Act Corrective Action Units, Nevada National Security Site, Nevada*. DOE/NV--1515. January 2014.
- U.S. Department of Energy, National Nuclear Security Administration Nevada Site Office, 2010. *Corrective Action Decision Document/Corrective Action Plan for the 92-Acre Area and Corrective Action Unit 111: Area 5 WMD Retired Mixed Waste Pits, Nevada National Security Site, Nevada*. DOE/NV--1326-REV1. November 2010.
- U.S. Department of Energy, National Nuclear Security Administration Nevada Site Office, 2012. *Closure Report for the 92-Acre Area and Corrective Action Unit 111: Area 5 WMD Retired Mixed Waste Pits, Nevada National Security Site, Nevada*. DOE/NV--1472. February 2012.
- U.S. Department of Energy, Nevada Operations Office, 2000. *Closure Plan for Corrective Action Unit 110: Area 3 RWMS U-3ax/bl Disposal Site, Nevada Test Site, Nevada*. DOE/NV--647. August 2000.
- U.S. Department of Energy, Nevada Operations Office, 2001. *Closure Report for Corrective Action Unit 110: Area 3 RWMS U-3ax/bl Disposal Unit, Nevada Test Site, Nevada*. DOE/NV--733-REV1. August 2001.

DISTRIBUTION LIST

U.S. Department of Energy, National Nuclear Security Administration Nevada Field Office

U.S. Department of Energy National Nuclear Security Administration Nevada Field Office Public Reading Facility P.O. Box 98521, M/S 400 Las Vegas, NV 89193-8521	2 (CD)
U.S Department of Energy Office of Scientific and Technical Information P.O. Box 62 Oak Ridge, TN 37831-0062	1 digital file

U.S. Department of Energy, Environmental Management Nevada Program

Jhon T. Carilli Low-Level Waste Activity Lead, Environmental Management Nevada U.S. Department of Energy P.O. Box 98518 M/S 505 Las Vegas, NV 89193-8518	1 digital file
--	----------------

Mission Support and Test Services, LLC

David M. Black Mission Support and Test Services, LLC P.O. Box 98521, M/S NLV082 Las Vegas, NV 89193-8521	4
David B. Hudson Mission Support and Test Services, LLC P.O. Box 98521, M/S NLV082 Las Vegas, NV 89193-8521	4
Tom R. Hergert Mission Support and Test Services LLC P.O. Box 677, M/S NNSS403 Mercury, NV 89023-0677	1 digital file
Reed J. Poderis Mission Support and Test Services, LLC P.O. Box 98521, M/S NLV082 Las Vegas, NV 89193-8521	1 digital file

2018 Waste Management Monitoring Report
Area 3 and Area 5 Radioactive Waste Management Sites

Theodore J. Redding
Mission Support and Test Services, LLC
P.O. Box 677, M/S NNSS273
Mercury, NV 89023-0677

1 digital file

Gregory J. Shott
Mission Support and Test Services, LLC
P.O. Box 98521, M/S NLV082
Las Vegas, NV 89193-8521

1 digital file

Jonathan J. Richter
Mission Support and Test Services LLC
P.O. Box 677, M/S NNSS403
Mercury, NV 89023-0677

1 digital file

Ronald W. Warren
Mission Support and Test Services, LLC
P.O. Box 677, M/S NNSS273
Mercury, NV 89023-0677

1 digital file