

Multi-scale ordering in highly stretchable polymer semiconducting films

Jie Xu ^{1,10,14}, Hung-Chin Wu ^{1,14}, Chenxin Zhu², Anatol Ehrlich¹, Leo Shaw ¹, Mark Nikolka¹, Sihong Wang^{1,11}, Francisco Molina-Lopez ^{1,12}, Xiaodan Gu ^{1,3,13}, Shaochuan Luo⁴, Dongshan Zhou⁴, Yun-Hi Kim⁵, Ging-Ji Nathan Wang ¹, Kevin Gu¹, Vivian Rachel Feig ⁶, Shucheng Chen¹, Yeongin Kim², Toru Katsumata^{1,7}, Yu-Qing Zheng¹, He Yan⁸, Jong Won Chung^{1,9}, Jeffrey Lopez ¹, Boris Murmann ² and Zhenan Bao ^{1*}

Stretchable semiconducting polymers have been developed as a key component to enable skin-like wearable electronics, but their electrical performance must be improved to enable more advanced functionalities. Here, we report a solution processing approach that can achieve multi-scale ordering and alignment of conjugated polymers in stretchable semiconductors to substantially improve their charge carrier mobility. Using solution shearing with a patterned microtrench coating blade, macroscale alignment of conjugated-polymer nanostructures was achieved along the charge transport direction. In conjunction, the nanoscale spatial confinement aligns chain conformation and promotes short-range π - π ordering, substantially reducing the energetic barrier for charge carrier transport. As a result, the mobilities of stretchable conjugated-polymer films have been enhanced up to threefold and maintained under a strain up to 100%. This method may also serve as the basis for large-area manufacturing of stretchable semiconducting films, as demonstrated by the roll-to-roll coating of metre-scale films.

Electronics that flex and stretch, behaving much like skin, have been developing quickly and showing potential to significantly impact our daily life¹⁻³. Stretchable semiconducting materials are crucial for enabling such electronics. Intrinsic stretchability can provide a number of advantages, including high device density, high data fidelity through near-sensor processing, excellent mechanical robustness and scalable fabrication⁴. Much progress has been made in understanding the structure-property relationships for stretchable materials^{5,6}. However, the current state-of-art mobility from stretchable semiconductors can only satisfy the requirements for very limited electronic functionalities⁷. Approaches that achieve high electrical performance while maintaining good mechanical stretchability remain rare.

Current strategies for high-performance stretchable conjugated polymers are developed mainly on the basis of three categories: (1) tailoring the chemical structure by introducing either soft segments to increase polymer chain flexibility or dynamic interactions to dissipate the applied strain energy^{8,9}, (2) increasing the ductility of polymer chains by introducing a nanoconfinement effect to enhance chain dynamics and suppress the growth of large crystallites^{10,11} and (3) engineering the geometry of materials through strain-engineering designs^{12,13}. Common among these strategies, the deposition of the polymer films is usually based on spin coating,

which tends to give a disordered and isotropic morphology. However, efficient charge transport favours ordered structures across multiple length scales from the single-chain conformation to the macroscale alignment. At the single-chain level, intrachain transport can be improved by reducing kinks and bending, which can extend π -electron delocalization along the backbone¹⁴. At the nano- to mesoscale, the interchain charge hopping through the overlapping of π -orbitals can be facilitated by forming short-range ordered polymer aggregates¹⁵. At the macroscale, the overall charge transport across device channels can be boosted by further aligning polymer chains and aggregations throughout the entire film¹⁶.

In this work, we develop a solution-shearing method using a blade with line structures, and demonstrate the combination of this solution-shearing method with the nanoconfinement effect (Fig. 1a), so as to achieve both structural ordering across the molecular, meso- and macroscales for simultaneous substantially improved electrical performance and enhanced polymer chain dynamics for mechanical stretchability. Benefiting from multi-scale structural ordering, energetic disorder was reduced, resulting in better π -electron delocalization and therefore reduced activation energy for charge transport. This method has been applied to the fabrication of stretchable semiconducting films from five different conjugated polymers, which all showed major improvements to their

¹Department of Chemical Engineering, Stanford University, Stanford, CA, USA. ²Department of Electrical Engineering, Stanford University, Stanford, CA, USA. ³Stanford Synchrotron Radiation Lightsource, SLAC National Accelerator Laboratory, Menlo Park, CA, USA. ⁴Department of Polymer Science and Engineering, School of Chemistry and Chemical Engineering, State Key Laboratory of Coordination Chemistry, Nanjing University, Nanjing, China. ⁵Department of Chemistry and RINS, Gyeongsang National University, Jinju, South Korea. ⁶Department of Materials Science and Engineering, Stanford University, Stanford, CA, USA. ⁷Corporate Research and Development, Performance Materials Technology Center, Asahi Kasei Corporation, Fuji, Shizuoka, Japan. ⁸Department of Chemistry and Hong Kong Branch of Chinese National Engineering Research Center for Tissue Restoration and Reconstruction, The Hong Kong University of Science and Technology, Kowloon, Hong Kong, China. ⁹Material Research Center, Samsung Advanced Institute of Technology Yeongtong-gu, Suwon-si, Gyeonggi-do, South Korea. ¹⁰Present address: Nanoscience and Technology Division, Argonne National Laboratory, Lemont, IL, USA. ¹¹Present address: Institute for Molecular Engineering, University of Chicago, Chicago, IL, USA. ¹²Present address: Department of Materials Engineering, KU Leuven, Belgium. ¹³Present address: School of Polymer Science and Engineering, University of Southern Mississippi, Hattiesburg, MS, USA. ¹⁴These authors contributed equally: J. Xu, H.-C. Wu. *e-mail: zbao@stanford.edu

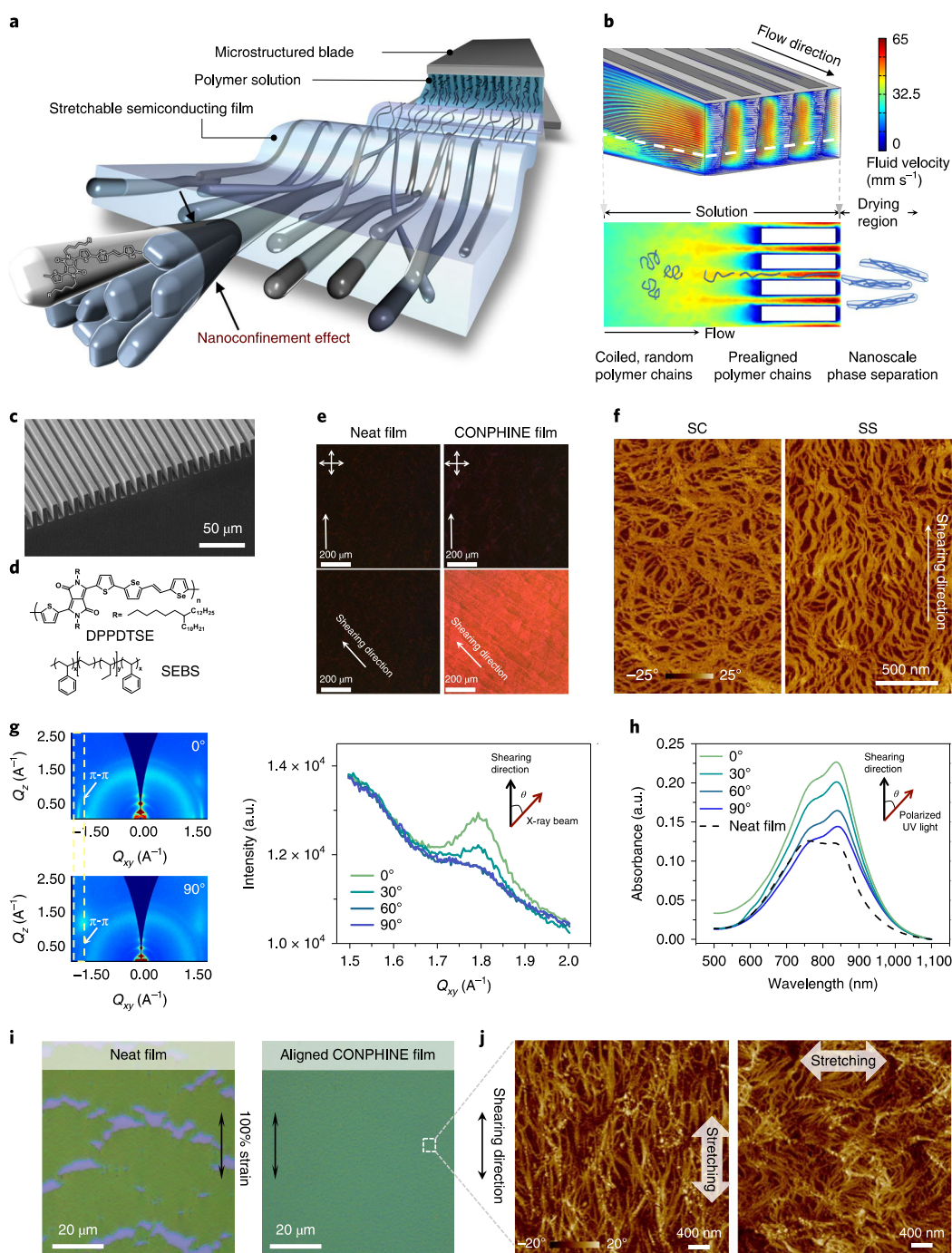


Fig. 1 | Achieving multiple length scale ordering of conjugated polymers in stretchable semiconductors through a combination of the patterned-blade solution-shearing method and the nanoconfinement effect. **a**, Three-dimensional schematic representing alignment of polymer semiconductor nanofibres through the solution-shearing method using a microtrench-patterned blade. **b**, Calculated three- (top) and two-dimensional (bottom) velocity fields (streamline representation) of the solution between the coating blade and the substrate. The simulated printing speed is 3 mm s^{-1} . **c**, Scanning electron microscopy image of a microtrench-patterned blade. The height and width of the trench are $20 \mu\text{m}$ and $5 \mu\text{m}$, respectively. The gap between the repeating units is $10 \mu\text{m}$. **d**, Chemical structures of the semiconducting polymer DPPDTSE and the SEBS elastomer (weight ratio: 12/88). **e**, Polarized optical microscopy images of an SS-neat DPPDTSE film and an SS-CONPHINE film (trench). The orientation of the cross-polarizers is shown as arrows, and the white arrows indicate the coating direction. **f**, AFM phase images of the bottom surfaces of an SC-CONPHINE film and an SS-CONPHINE film (trench). **g**, GIXD images (left) of the SS-CONPHINE film (trench), with the incident beam oriented parallel (0°) and perpendicular (90°) to the coating direction. The dashed boxes highlight the in-plane π - π stacking peaks. The right-hand plot is the intensity line cuts for the SS-CONPHINE film (trench) along the Q_{xy} axis, with the incident beam oriented at different angles with respect to the shearing direction. **h**, Absorption spectra of polarized ultraviolet-visible spectroscopy from SS-CONPHINE film (trench) (solution concentration 30 mg ml^{-1} , substrate temperature 50°C , blade movement speed 3 mm s^{-1}). The inset shows the angles between the shearing direction and the axis of the polarizer. The dashed curve is the absorption spectra of the SC-neat DPPDTSE film with the intensity normalized for comparison. **i**, Optical microscope images of a neat semiconductor film and an SS-CONPHINE film under 100% strain along the shearing direction; **j**, AFM phase images showing the nanoscale morphology of the SS-CONPHINE films under 100% strain both parallel and perpendicular to the shearing direction.

charge carrier mobilities by up to sixfold when compared with their spin-coated (SC) counterparts. The fabricated fully stretchable transistors gave an average initial mobility of $1.5 \text{ cm}^2 \text{ V}^{-1} \text{ s}^{-1}$, which changed minimally under stretching up to 100% strain. Furthermore, we extended this method to roll-to-roll printing for the large-scale fabrication of stretchable semiconducting films with desired chain alignment and therefore high performance.

Achieving multi-scale morphological ordering together with mechanical stretchability in a solution-printed semiconducting film relies on two key factors: (1) generating a strong unidirectional flow field for alignment of polymer chains, and (2) ‘freezing’ the polymer alignment while achieving good stretchability. Inspired by the microchannel design for DNA stretching¹⁷, a coating blade with micro-trenches was designed to effectively generate an intensive unidirectional flow field to align and elongate polymer chains in the solution beneath the blade (Fig. 1b,c; Supplementary Figs. 1 and 2 describe in more detail the simulation results and rationales for the blade design). However, it remains challenging to prevent chain relaxation from the extended conformation and aligned orientation during film drying. Although this challenge has been conquered by pre-engineering the substrates into specific designs (for example nanogrooves¹⁸, dynamic templates¹⁹) or directional coating of pregrown nanowires/nanofibres^{20,21}, the rough morphology and/or high crystallinity of the resulting films are unfavourable for realizing high stretchability. Here, we hypothesize that, during the drying process, conjugated-polymer nanofibril structures formed from conjugated-polymer/elastomer phase separation may confine the conjugated-polymer chains with an extended chain conformation. Moreover, the relaxation of these larger aligned nanofibres in the elastomer matrix when compared with that of a single polymer chain should be much slower kinetically at timescales relevant to drying. Additionally, the nanoconfinement introduced during this shear coating deposition may achieve improved stretchability¹⁰. Indeed, we show that, under optimized solution-shearing conditions, semiconducting polymer films with aligned nanoconfined morphology could be fabricated through the conjugated-polymer/elastomer phase-separation-induced elasticity (termed CONPHINE) methodology, which achieves morphological ordering at multiple length scales in a single coating step. Moreover, the enhanced chain dynamics and the suppressed crystallization from the nanoconfinement effect serve to greatly improve the stretchability of the conjugated polymers¹⁰.

Achieving multi-scale ordering

A high-mobility semiconducting polymer, poly-[2,5-bis(7-decylnonadecyl)pyrrolo[3,4-c]pyrrole-1,4-(2H,5H)-dione-(E)-(1,2-bis(5-(thiophen-2-yl)selenophen-2-yl)ethene) (DPPDTSE)²², and a soft elastomer, polystyrene-block-poly(ethylene-ran-butylene)-block-polystyrene (SEBS), were chosen as the two components in the CONPHINE film to demonstrate the concept (Fig. 1d). With a lower weight percentage of DPPDTSE, thinner nanofibres were obtained in the SC-CONPHINE film, reaching a fibre diameter around 30 nm at 30 wt% DPPDTSE as shown by atomic force microscopy (AFM) phase images (Supplementary Fig. 3). Previous work found that conjugated-polymer chains can be confined along the axis of the nanofibres with such dimensions²³. In order to maximize the macroscopic alignment in the CONPHINE films, it is crucial to use high shear stress to prealign the polymer chains before drying and to minimize the drying time to ‘freeze in’ the aligned orientation of the phase-separated nanofibrils. On the basis of these requirements, we optimized the solution-shearing process by altering the following parameters: solution concentration (Supplementary Fig. 4), shear speed (Supplementary Fig. 5) and temperature (Supplementary Fig. 6). The optimal conditions were determined to be 30 mg ml^{-1} , 3 mm s^{-1} and 50°C by characterization of the alignment through dichroic ratios (that is the ratio

between the absorption intensity parallel to the alignment direction and that perpendicular to the alignment direction using polarized ultraviolet–visible absorption spectroscopy, Fig. 1h). Detailed analysis is provided in Supplementary Section 2. During solution shearing, the phase-separation process during the drying of the conjugated-polymer/elastomer solution is complicated²⁴, as it is influenced not only by the Flory–Huggins interaction parameters, solubility and surface energy, but also by the crystallization and aggregation kinetics. Understanding of the process will provide insights towards further improvement of both charge transport and mechanical properties. However, it is beyond the scope of the current study.

We first provide an in-depth morphological characterization of the optimized solution-sheared (SS)-CONPHINE film (solution concentration 30 mg ml^{-1} , sheared at 50°C with a speed of 3 mm s^{-1} by the microtrench blade) and clearly demonstrate the achieved multi-scale ordering. Cross-polarized optical microscopy, X-ray photoelectron spectroscopy (XPS) and AFM characterization were employed to investigate the details of the film morphology, particularly qualitative long-range ordering at the macroscale. Cross-polarized optical microscopy showed nearly complete light extinction and uniform light re-emergence on rotation of the SS-CONPHINE film with respect to the polarizer from 0° to 45° to the shearing direction, indicating that long-range ordering of the polymer backbones along the coating direction was achieved (Fig. 1e). However, in the SS-neat DPPDTSE film, which does not have nanoconfined fibres (Supplementary Fig. 7), there was no clear optical anisotropy observed (Fig. 1e). As revealed by XPS, the SS-CONPHINE film formed a trilayer structure with the conjugated polymer mainly occupying the top and bottom interfaces (Supplementary Fig. 8). From AFM phase images, aligned nanofibres along the shearing direction were observed on the bottom interface of the SS-CONPHINE film (Fig. 1f), while the SC-CONPHINE film exhibited a randomly oriented nanofibre network. The nanofibres on the top surface of the SS-CONPHINE film exhibited slightly less ordering (Supplementary Fig. 8B), which may be attributed to the solvent-evaporation-induced flows on the surface of the liquid layer. At the meso- to molecular scales, grazing incidence X-ray diffraction (GIXD) measurements were applied to investigate the ordering of the crystalline regions, and ultraviolet–visible absorption spectra were used to characterize the level of short-range ordering (aggregation) and the conformation of the DPPDTSE polymer chain in aligned nanofibres. From the GIXD measurements (Fig. 1g), a much more intense edge-on π – π stacking peak along the film coating direction parallel to the incident beam was observed in the SS-CONPHINE film when compared with the perpendicular direction, indicating the orientational order of the crystalline regions. However, this morphological anisotropy was not observed in either the SS-neat DPPDTSE film or the SC-CONPHINE film (Supplementary Figs. 9 and 10). The ultraviolet–visible spectra of the SS-CONPHINE films showed a substantial increase in the ratio between the 0–0/0–1 peaks and a clear redshift of the 0–0 peak from 830 nm to 840 nm (Fig. 1h), as compared with the neat DPPDTSE film. This indicates an increase in short-range ordering (aggregation), as well as possibly improved chain planarization and linearity under one-dimensional confinement. Additionally, a maximum absorption intensity was observed when the polarization of the incident light was parallel to the coating direction, which is the same as the alignment direction for the observed nanofibres (Fig. 1h). Since the transition dipole moments for most donor–acceptor conjugated polymers tend to be oriented parallel to the polymer backbone^{25,26}, this measured optical anisotropy reveals that the DPPDTSE polymer chain is aligned along the nanofibre in the SS-CONPHINE film, which is consistent with the observations from GIXD that the π – π stacking direction orientated perpendicularly to the alignment direction of the nanofibres.

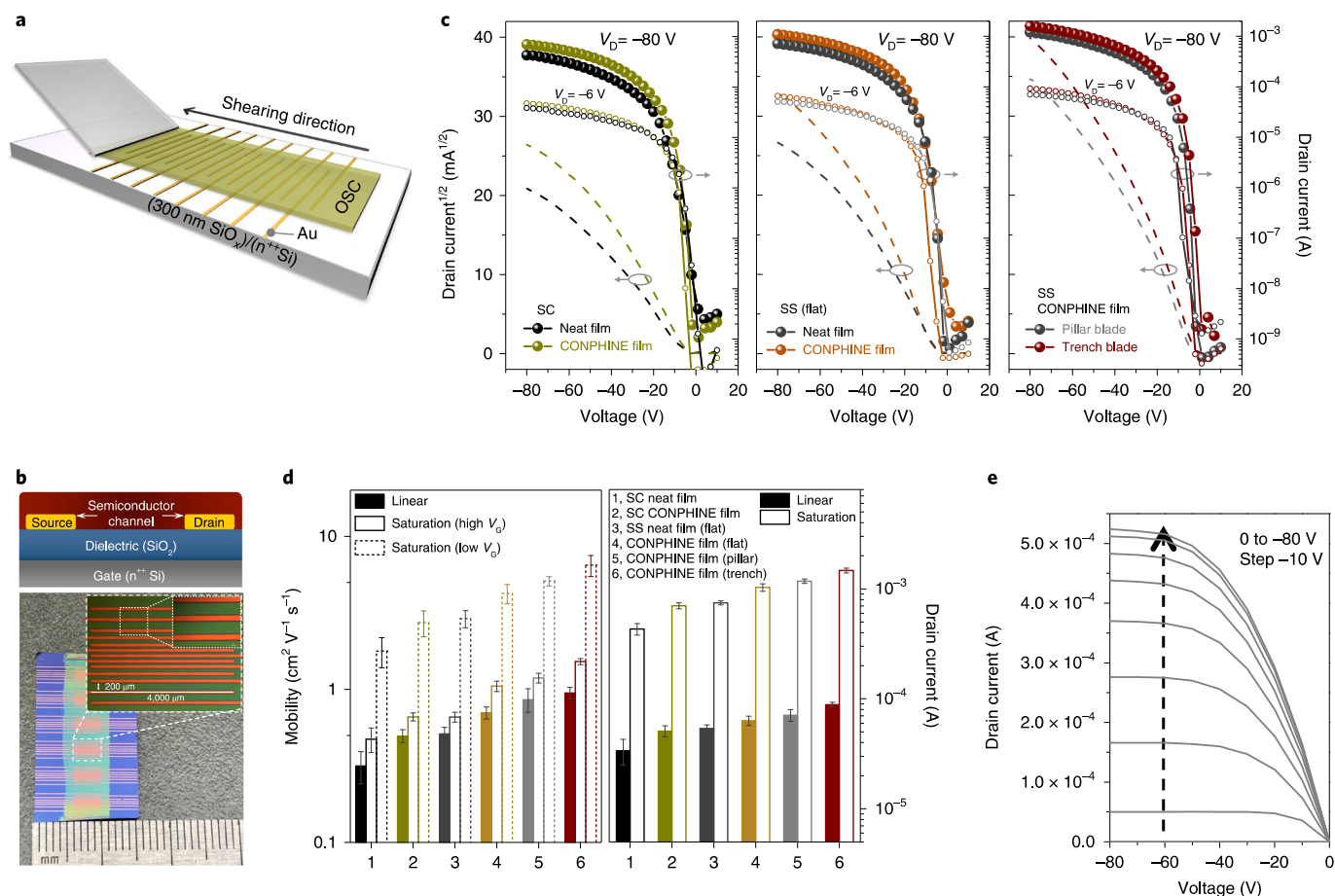


Fig. 2 | Characterization of the electrical performance of the semiconducting films fabricated using different processes. **a**, Schematic of the solution shearing of films on a doped Si substrate with a SiO₂ dielectric (300 nm) and gold electrodes on top as drain and source electrodes to characterize the electrical performance in TFT devices. **b**, Optical image and schematic diagram of bottom-gate, bottom-contact organic TFT devices (channel length 200 μm; channel width 4 mm; dielectric capacitance 11.5 nF cm⁻²). **c**, Transfer curves (filled symbols, with the drain voltage $V_D = -80$ V; dashed lines, the square root of the drain current with $V_D = -80$ V; open symbols, with $V_D = -6$ V) from TFTs with different semiconducting films. **d**, Average mobilities (estimated from the linear regime and the saturation in both high- and low-gate-voltage regimes with the average reliability factor values²⁸ of $r_{lin} = 85\%$, $r_{sat,high} = 147\%$ and $r_{sat,low} = 32\%$, respectively) and drain currents of these different semiconducting films. The error bars represent the standard deviation obtained from six measurements. **e**, A typical output characteristic from a device fabricated using an SS-CONPHINE film coated with a microtrench-patterned blade.

The other important benefit of nanoconfinement, in this anisotropically aligned nanofibre morphology, is the substantially enhanced stretchability of DPPDTSE owing to enhanced chain dynamics and suppressed large crystal growth of the conjugated polymers¹⁰. Additionally, crack propagation was inhibited by the deformable interfaces formed with the elastomer SEBS matrix¹⁰. Figure 1i shows that the aligned CONPHINE film can be stretched to 100% strain in the directions both parallel and perpendicular to the shearing direction without resulting in any cracks even at the nanoscale as characterized by AFM (Fig. 1j), while the neat film showed large cracks (width around 10 μm) at 100% strain.

Transistor performance

With both improved conformational order and morphological alignment, organic thin-film transistors (TFTs) fabricated using our SS-CONPHINE films exhibited substantially improved performance in the initial strain-free state. The semiconducting films were directly deposited (SS or SC) on top of a rigid device stack (40 nm Au as source and drain electrodes on octadecyltrichlorosilane (OTS)-modified 300 nm SiO₂/Si, Fig. 2a,b) to achieve the bottom-gate, bottom-contact device structure. A typical transfer

curve in the saturation regime exhibited a double-slope characteristic with a downward bend at higher gate voltages, which is likely to arise from contact resistance effects (Supplementary Fig. 11) and carrier trapping^{27–30}. Correspondingly, we calculated saturation mobility values in regions of both low and high gate voltage (V_G , Supplementary Fig. 12A). Linear-regime mobility is also listed since it is less prone to erroneous mobility extraction²⁸. To understand how the changes in the observed morphology impact the transistor performance, we first compared the transistor characteristics of the SC-neat DPPDTSE film (~130 nm) with those of the SC-CONPHINE film. Both the on-currents and estimated charge carrier mobilities from the SC-CONPHINE films using three methods (that is, saturation mobility in the high- V_G regime, saturation mobility in the low- V_G regime and linear-regime mobility) consistently increased by around 50% when compared with those of the neat films (Fig. 2c(left),d), suggesting that the extended DPPDTSE chain conformation and promoted DPPDTSE aggregation from spatial nanoconfinement are beneficial for charge transport. Next, the transistor characteristics of the SS-CONPHINE films were investigated. From the CONPHINE film sheared just using an unstructured (flat) blade, much higher on-current and

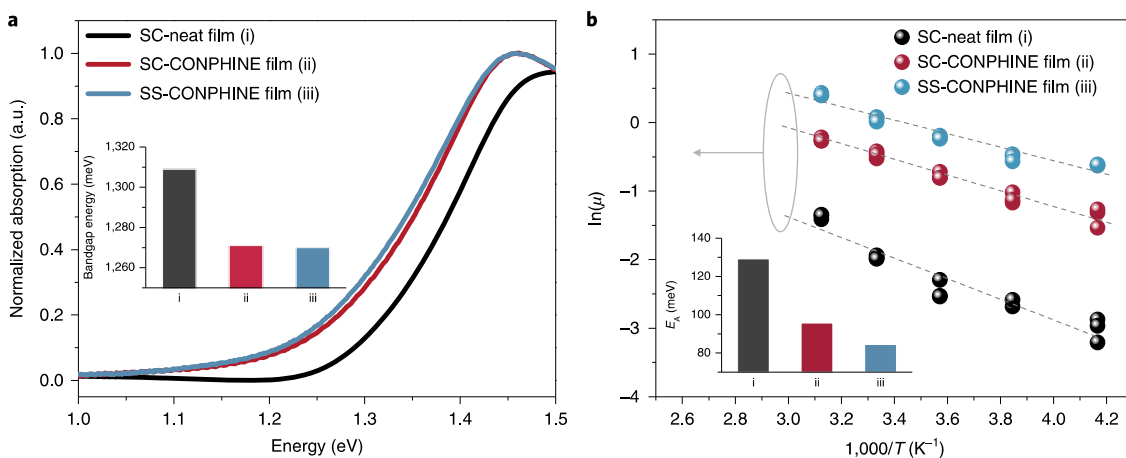


Fig. 3 | Measurements of bandgap energies and activation energies for charge transport. **a**, Normalized UV absorption of SC-neat, SC-CONPHINE and SS-CONPHINE films (trench). The inset shows the bandgap energies of these three films. **b**, Arrhenius plots of the temperature-dependent μ values for SC-neat, SC-CONPHINE and SS-CONPHINE films (trench) with a drain-source voltage (V_{DS}) value of -6 V. The dashed lines show the linear fits of the data. The inset shows the activation energies of these three films.

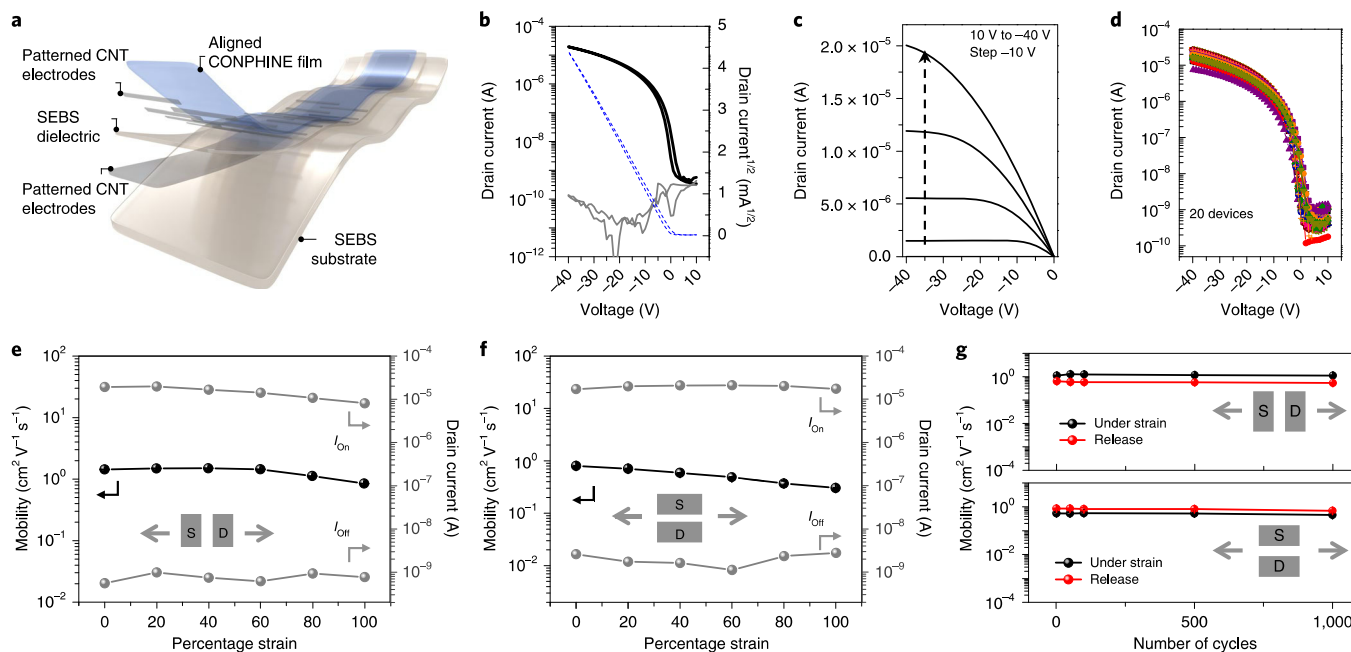


Fig. 4 | Fully stretchable transistors fabricated from the SS-CONPHINE film. **a**, The device structure (Supplementary Fig. 20; channel length $200 \mu\text{m}$; channel width 4mm ; dielectric capacitance 1.5nF cm^{-2}). **b**, A typical transfer curve ($V_D = -40 \text{V}$) at 0% strain (dashed lines, square root of the drain current; grey lines, gate current). **c**, A typical output characteristic at 0% strain. **d**, Transfer curves from 20 devices in arrays of fully stretchable transistors at 0% strain. **e, f**, Changes in the on-current and saturation mobility (calculated with measured device geometry and dielectric capacitance under strain, Supplementary Table 2, Supplementary Fig. 12C) during stretching to 100% strain, both parallel (**e**) and perpendicular to (**f**) the charge transport direction. **g**, Changes in the mobility after multiple stretch-release cycles (up to 1,000 cycles) at 50% strain parallel (top) and perpendicular (bottom) to the charge transport direction. The reliability factor values of the mobilities are provided in Supplementary Table 3.

charge carrier mobilities were already observed when compared with the SS-neat film (flat), indicating that polymer chain alignment improved the charge transport in the nanoconfined morphology (Fig. 2c(middle),d). As a comparison, in SS-DPPDTSE neat films, less improvement was observed due to the low degree of alignment without spatial nanoconfinement. Finally, with the structured shearing blades (micropillar and microtrench shaped) at the optimized shearing conditions, the transistor performance was further improved, which can be attributed to the enhanced

degree of alignment (Supplementary Fig. 1E) on the basis of the positive correlation observed between alignment and on-currents (Supplementary Fig. 13). Using the microtrench-structured blade to fabricate SS-CONPHINE resulted in the highest on-current and linear mobility, which was around twice the linear mobility of the SC-CONPHINE film and three times the linear mobility of the SC-neat DPPDTSE film (Fig. 2c(right),d). Figure 2e shows a typical output characteristic from the device fabricated using an SS-CONPHINE film with a microtrench-patterned blade.

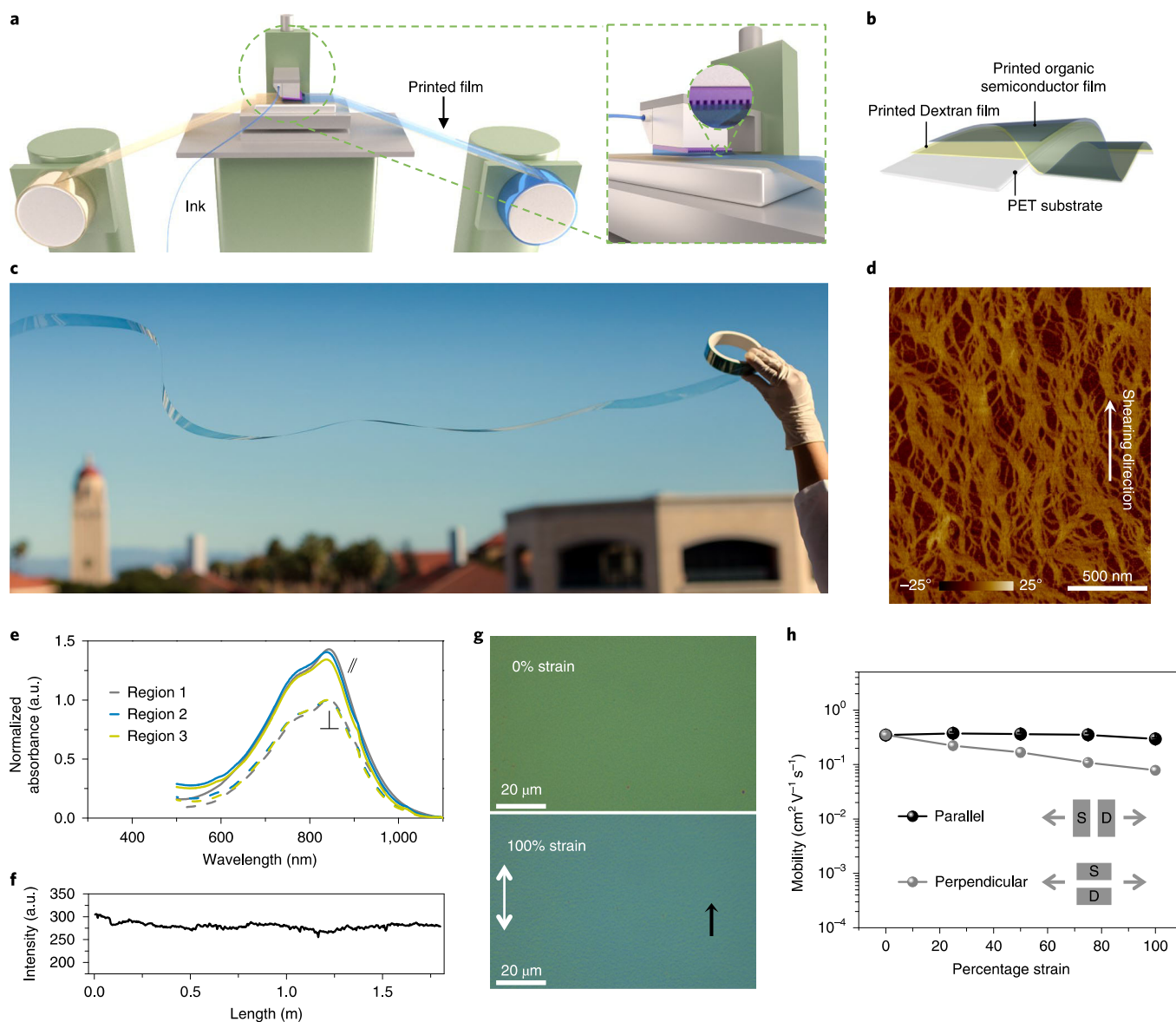


Fig. 5 | Large-area roll-to-roll coating of aligned, stretchable CONPHINE film. **a**, Roll-to-roll coating using a combination of a slot die coater and a microtrench-structured shearing blade. Right, magnified view of the coater setup. **b**, Roll-to-roll-coated film structure (PET substrate 30 μm ; Dextran film ~ 200 nm; printed film ~ 100 nm). **c**, Roll of metre-scale, roll-to-roll-coated CONPHINE films on PET. **d**, AFM phase image of the top surface of a roll-to-roll-coated CONPHINE film. **e**, Polarized ultraviolet-visible absorption spectra of roll-to-roll-coated CONPHINE films from three different regions. The sign \parallel (\perp) denotes the film orientation when the coating direction is parallel (perpendicular) to the axis of the polarizer. **f**, Plot of the transmitted light intensity as a function of time during film coating. **g**, Optical microscope images of a roll-to-roll-coated CONPHINE film under 0% (top) and 100% (bottom) strain. The black arrow indicates the coating direction. **h**, Changes in the mobility (calculated with measured device geometry and dielectric capacitance under strain¹⁰) of the roll-to-roll-coated CONPHINE film with strain up to 100%, both parallel and perpendicular to the charge transport direction in the fabricated fully stretchable transistors (Supplementary Fig. 20; channel length 200 μm ; channel width 4 mm; dielectric capacitance 1.5 nF cm^{-2}). The reliability factor values of the mobilities are provided in Supplementary Table 5.

To evaluate the generality of this approach on different conjugated polymers for fabricating high-performance stretchable semiconductors, it was further applied to four other conjugated polymers (Supplementary Fig. 14). Highly aligned nanoconfined morphologies were again achieved from all of these polymers, with their stretchability greatly improved (no cracks observed up to 100% strain, as shown in Supplementary Fig. 15). Benefiting from such multi-scale morphological ordering, the on-currents from these SS films exceed those of their SC counterparts by around two- to six-fold (Supplementary Fig. 16).

Understanding the morphology-transport relationship

To understand the link between the observed morphology and improved transistor performance, we further investigated the bandgap and transport activation energy (E_A) of the SC-neat, SC-CONPHINE and SS-CONPHINE films. As an important parameter representing the energetic disorder in conjugated polymers due to variations in backbone conformation and aggregation states, the optical and electrochemical bandgap energies of DPPDTSE in these three films were extracted from ultraviolet-visible spectra (Fig. 3a) and cyclic voltammetry measurements (Supplementary Fig. 17),

respectively. When compared with the neat film, DPPDTSE under spatial nanoconfinement exhibited a much lower bandgap energy (Fig. 3a and Supplementary Fig. 17), indicating better π -electron delocalization. This can be explained by the increased effective conjugation and/or more short-range aggregation due to the extended chain conformation under confinement. However, little difference between the spectra of SC- and SS-CONPHINE films was observed, indicating that the macroscale alignment of nanofibres did not change the bandgap energy. In order to more directly reflect the influence on charge carrier mobility, we next measured the E_A of charge transport in these semiconducting films³¹. The E_A can be extracted from temperature-dependent mobility (μ) measurements using the Arrhenius relation, $\mu \propto \exp(-E_A/kT)$, where k is the Boltzmann constant and μ values were measured in the linear regime under low drain–source voltage (Supplementary Fig. 18). As shown in Fig. 3b, the SC-CONPHINE film exhibited a substantially lower E_A value than the neat film, which serves as one of the explanations for the higher observed charge carrier mobility. Moreover, in the SS-CONPHINE films (fabricated with flat-, pillar- and trench-structured blades, Supplementary Fig. 19), the alignment of nanofibres achieved may further reduce the morphological boundaries that are unfavourable for charge transport, leading to the lowest E_A and therefore the highest charge carrier mobility in the best aligned SS-CONPHINE film (trench blade).

Electrical performance of stretchable transistors

For evaluation of the electrical performance under strain, the SS-CONPHINE film was used to fabricate fully stretchable transistors in the bottom-gate, bottom-contact configuration, with carbon nanotube (CNT) networks defining the charge transport channels along the shearing direction, and SEBS as both the dielectric layer and the stretchable substrate (Fig. 4a). The fully stretchable TFT exhibits nearly ideal transistor characteristics, reaching an average mobility of $1.50 \text{ cm}^2 \text{ V}^{-1} \text{ s}^{-1}$ ($r_{\text{sat}} = 84\%$, Supplementary Fig. 21) from 20 devices with relatively small variance (Fig. 4b–d). Here, the lower mobilities when compared with those from semiconducting films directly deposited on Si/SiO₂ are due to deteriorated interface quality caused by the film transfer process during fabrication, as well as a higher contact resistance from CNT electrodes when compared with Au^{10,19}. When stretched to 100% strain along the charge transport direction, the mobility remains almost the same (Fig. 4e and Supplementary Fig. 22A), with only a slight drop in the on-current as a result of the increased channel length under stretching. When the stretching is perpendicular to the charge transport direction, the combined effect of the slight decrease in mobility and the device geometric change makes the transfer curve very stable under strain up to 100% (Fig. 4f and Supplementary Fig. 22B). Furthermore, this fully stretchable TFT exhibits a good robustness with stable device performance over 1,000 repeated stretching cycles (at four cycles per second) to 50% strain (Fig. 4g and Supplementary Figs. 22C and D). As a comparison, the strain effects on the mobilities (r_{sat} provided in Supplementary Table 4) from the SC-neat DPPDTSE film and SS-CONPHINE film are provided in Supplementary Figs. 23 and 24, respectively.

Roll-to-roll fabrication of aligned CONPHINE film

We further extended this method for multi-scale morphology control to an industrially relevant roll-to-roll coating process to fabricate high-performance, stretchable semiconducting films metres in length, with a high coating speed of $1/6 \text{ mmin}^{-1}$ (Fig. 5a,c, Supplementary Movie 1). The consumption of conjugated polymer is estimated to be only about 0.02 g m^{-2} . A polyethylene terephthalate (PET) roll was used as the printing substrate. In order to release the printed semiconducting film from the PET substrate for electrical and mechanical testing, a water-soluble sacrificial layer (Dextran) was printed prior to the printing of the aligned CONPHINE film

(Fig. 5b). As revealed by AFM phase images and XPS characterization, the print-aligned CONPHINE film showed a bilayer structure with the aligned network of nanofibril conjugated polymer on its top surface (Fig. 5d and Supplementary Fig. 25). The uniformity of the printed film was examined using ultraviolet–visible absorption spectroscopy and AFM on three randomly chosen regions, all of which had similar spectra with nearly identical dichroic ratios and similar morphologies (Fig. 5d,e and Supplementary Fig. 26). On the large scale, as characterized by the absorption intensity of the film, the thickness variation over the metre-long continuously coated film was less than 8% (Fig. 5f and Supplementary Fig. 27). This printed CONPHINE film also exhibited both high stretchability and good electrical performance (Fig. 5g,h, Supplementary Fig. 28 and Table 5). Compared with that of the small-area SS-CONPHINE film, the reduction in electrical performance here is attributed to the lower degree of overall alignment (the dichroic ratio is 1.4 here as compared with 1.7 from the small-area SS-CONPHINE film) and the rougher surface of the PET substrate when compared with Si/SiO_x (with averaged surface roughness of 9.5 nm versus 1.1 nm, Supplementary Fig. 29). Nevertheless, when compared with other reported semiconducting films fabricated by roll-to-roll printing, the performance of the printed aligned CONPHINE film is still among the highest (Supplementary Table 6).

In summary, the physical nanoconfinement effect and SS fabrication with a patterned microtrench blade were used to simultaneously achieve both enhanced chain dynamics¹⁰ and multi-scale morphological order for conjugated polymers, and therefore imparted greatly improved stretchability as well as substantially enhanced electrical performance. This processing approach is expected to benefit the development of stretchable semiconductors towards high-performance, low-cost and mass-produced stretchable skin-like electronics.

Received: 15 July 2018; Accepted: 12 March 2019;
Published online: 15 April 2019

References

1. Chu, B., Burnett, W., Chung, J. W. & Bao, Z. Bring on the bodyNET. *Nat. News* **549**, 328–330 (2017).
2. Wang, S., Oh, J. Y., Xu, J., Tran, H. & Bao, Z. Skin-inspired electronics: an emerging paradigm. *Acc. Chem. Res.* **51**, 1033–1045 (2018).
3. Someya, T., Bao, Z. & Malliaras, G. G. The rise of plastic bioelectronics. *Nature* **540**, 379–385 (2016).
4. Wang, S. et al. Skin electronics from scalable fabrication of an intrinsically stretchable transistor array. *Nature* **555**, 83–88 (2018).
5. Wang, N. G. J., Gasperini, A. & Bao, Z. Stretchable polymer semiconductors for plastic electronics. *Adv. Electron. Mater.* **4**, 1700429 (2018).
6. Root, S. E., Savagatrup, S., Printz, A. D., Rodriguez, D. & Lipomi, D. J. Mechanical properties of organic semiconductors for stretchable, highly flexible, and mechanically robust electronics. *Chem. Rev.* **117**, 6467–6499 (2017).
7. *International Technology Roadmap for Semiconductors* (ITRS, 2012).
8. Oh, J. Y. et al. Intrinsically stretchable and healable semiconducting polymer for organic transistors. *Nature* **539**, 411–415 (2016).
9. Müller, C. et al. Tough, semiconducting polyethylene-poly(3-hexylthiophene) diblock copolymers. *Adv. Funct. Mater.* **17**, 2674–2679 (2007).
10. Xu, J. et al. Highly stretchable polymer semiconductor films through the nanoconfinement effect. *Science* **355**, 59–64 (2017).
11. Napolitano, S., Glynos, E. & Tito, N. B. Glass transition of polymers in bulk, confined geometries, and near interfaces. *Rep. Prog. Phys.* **80**, 036602 (2017).
12. Lee, Y. et al. Deformable organic nanowire field-effect transistors. *Adv. Mater.* **30**, 1704401 (2018).

13. Eunjo, S. et al. Stretchable and transparent organic semiconducting thin film with conjugated polymer nanowires embedded in an elastomeric matrix. *Adv. Electron. Mater.* **2**, 1500250 (2016).
14. Venkateshvaran, D. et al. Approaching disorder-free transport in high-mobility conjugated polymers. *Nature* **515**, 384–388 (2014).
15. Jackson, N. E. et al. Conformational order in aggregates of conjugated polymers. *J. Am. Chem. Soc.* **137**, 6254–6262 (2015).
16. Wang, G. et al. Aggregation control in natural brush-printed conjugated polymer films and implications for enhancing charge transport. *Proc. Natl Acad. Sci. USA* **114**, E10066–E10073 (2017).
17. Dai, L., Renner, C. B. & Doyle, P. S. The polymer physics of single DNA confined in nanochannels. *Adv. Colloid. Interface Sci.* **232**, 80–100 (2016).
18. Tseng, H.-R. et al. High mobility field effect transistors based on macroscopically oriented regioregular copolymers. *Nano Lett.* **12**, 6353–6357 (2012).
19. Mohammadi, E. et al. Dynamic-template-directed multiscale assembly for large-area coating of highly-aligned conjugated polymer thin films. *Nat. Commun.* **8**, 16070 (2017).
20. Persson, N. E., Chu, P.-H., McBride, M., Grover, M. & Reichmanis, E. Nucleation, growth, and alignment of poly(3-hexylthiophene) nanofibers for high-performance OFETs. *Acc. Chem. Res.* **50**, 932–942 (2017).
21. Chang, M., Su, Z. & Egap, E. Alignment and charge transport of one-dimensional conjugated polymer nanowires in insulating polymer blends. *Macromolecules* **49**, 9449–9456 (2016).
22. Kang, I., Yun, H.-J., Chung, D. S., Kwon, S.-K. & Kim, Y.-H. Record high hole mobility in polymer semiconductors via side-chain engineering. *J. Am. Chem. Soc.* **135**, 14896–14899 (2013).
23. Zheng, Z. et al. Uniaxial alignment of liquid-crystalline conjugated polymers by nanoconfinement. *Nano Lett.* **7**, 987–992 (2007).
24. Zhang, G. et al. Versatile interpenetrating polymer network approach to robust stretchable electronic devices. *Chem. Mater.* **29**, 7645–7652 (2017).
25. Schott, S. et al. Charge-transport anisotropy in a uniaxially aligned diketopyrrolopyrrole-based copolymer. *Adv. Mater.* **27**, 7356–7364 (2015).
26. Shaw, L. et al. Direct uniaxial alignment of a donor–acceptor semiconducting polymer using single-step solution shearing. *ACS Appl. Mater. Interfaces* **8**, 9285–9296 (2016).
27. McCulloch, I., Salleo, A. & Chabynyc, M. Avoid the kinks when measuring mobility. *Science* **352**, 1521–1522 (2016).
28. Choi, H. H., Cho, K., Frisbie, C. D., Sirringhaus, H. & Podzorov, V. Critical assessment of charge mobility extraction in FETs. *Nat. Mater.* **17**, 2–7 (2017).
29. Bittle, E. G., Basham, J. L., Jackson, T. N., Jurchescu, O. D. & Gundlach, D. J. Mobility overestimation due to gated contacts in organic field-effect transistors. *Nat. Commun.* **7**, 10908 (2016).
30. Phan, H. et al. Electrical double-slope nonideality in organic field-effect transistors. *Adv. Funct. Mater.* **28**, 1707221 (2018).
31. Nikolka, M. et al. Correlation of disorder and charge transport in a range of indacenodithiophene-based semiconducting polymers. *Adv. Electron. Mater.* **3**, 1700410 (2017).

Acknowledgements

This work is supported by the US Department of Energy, Office of Science, Basic Energy Sciences, under award DE-SC0016523 (material characterization) and by Samsung Electronics (device fabrication and characterization). G.-J.N.W. was supported by the Air Force Office of Scientific Research (grant no. FA9550-18-1-0143). Y.-H.K. acknowledges support from the NRF Korea (2018R1A2A105078734). L.S. acknowledges support from the Kodak Graduate Fellowship. The GIXD measurements were made at beamlines 11-3 and 7-2 of the Stanford Synchrotron Radiation Light Source, which are supported by the Director, Office of Science, Office of Basic Energy Sciences, of the US Department of Energy. Part of this work was performed at the Stanford Nano Shared Facilities (SNSF), supported by the National Science Foundation under award ECCS-1542152.

Author contributions

J.X. and Z.B. conceived and designed the experiments; J.X., H.-C.W., A.E. and K.G. fabricated the films; J.X., H.-C.W., C.Z., A.E. and M.N. fabricated the transistor devices and made the measurements; J.X. and L.S. carried out the flow simulations; X.G., F.M.-L. and H.-C.W. did the GIXD characterizations; S.C. and V.R.F. carried out the XPS and SEM characterizations; S.W., Y.K. and Y.-Q.Z. fabricated the micro-structured blades; G.-J.N.W., T.K., Y.-H.K., and H.Y. provided the conjugated polymers; S.L., D.Z. and J.L. contributed to the initial design of the printing ink. J.W.C. and B.M. advised on the discussion of results. J.X. organized the data and wrote the first draft of the manuscript. All authors reviewed and commented on the manuscript. Z.B. directed the project.

Competing interests

The authors declare no competing interests.

Additional information

Supplementary information is available for this paper at <https://doi.org/10.1038/s41563-019-0340-5>.

Correspondence and requests for materials should be addressed to Z.B.

Methods

Materials. Polymer poly(tetrathienoacene-diketopyrrolopyrrole) was provided by Corning Incorporated. The conjugated polymers DPPDTSE, poly[(5,6-difluoro-2,1,3-benzothiazol-4,7-diyl)-alt-(3,3'-di(2-decyltetradecyl)-2,2';5',2''-quaterthiophen-5,5''-diyl)]³², poly[2,5-bis(4-decyltetradecyl)pyrrolo[3,4-c]pyrrole-1,4-(2H,5H)-dione-(E)-1,2-di(2,2'-bithiophen-5-yl)ethene]¹⁰ and poly[(2,5-di(5-decyl-1-pentadecyl)-3,6-di(thiophen-2-yl)pyrrolo[3,4-c]pyrrole-1,4-(2H,5H)-dione)-alt-((E)-1,2-di(thiophen-2-yl)ethane)]¹⁰ were synthesized via reported methods. The number-averaged molecular weight, weight-averaged molecular weight and polydispersity index of these polymers were measured using high-temperature size exclusion chromatography performed at 200 °C with 1,2,4-trichlorobenzene as the solvent on a Tosoh high-temperature EcoSEC equipped with a single TSKgel permeation chromatography column (GMHHR-H; 300 mm × 7.8 mm) calibrated with monodisperse polystyrene standards. The molecular weights and polydispersity indices of these polymers are shown in Supplementary Table 1. SEBS (H1221 with volume fraction of poly(ethylene-co-butylene) 88%, H1062 with volume fraction of poly(ethylene-co-butylene) 82% and H1052 with volume fraction of poly(ethylene-co-butylene) 80%) was provided by Asahi Kasei. SEBS H1221 is used in the CONPHINE film system. SEBS H1052 is only used as the dielectric layer and SEBS H1062 is used for elastomer substrate and encapsulation layer preparation in fully stretchable devices. Poly(dimethylsiloxane) (PDMS, Sylgard 184, Dow Corning) was prepared at a ratio of 12:1 (base:cross-linker, w:w) and cured at 70 °C for 1 h for use in the lamination and as the stretching substrate. Dextran, OTS and all the solvents, such as chlorobenzene, toluene and trichloroethylene, were purchased from Sigma-Aldrich and used as received.

Thin-film preparation and characterization. Blade fabrication. A silicon mould was prepared first by patterning a photoresist mask with a Cr masking layer on top of a silicon wafer using standard photolithography, followed by dry ion etching (PlasmaTherm-DSE). There were three etching steps: (1) treating for 2.5 s with 10 V bias voltage at 2,000 W in a C₄F₈ and Ar (150/30 flow speed) environment at a pressure of 25 mTorr; (2) treating for 1.5 s with 250 V bias voltage at 2,000 W in an SF₆ and Ar (150/30 flow speed) environment at 40 mTorr; (3) treating for 3.0 s with 10 V bias voltage at 3,000 W in an SF₆ and Ar mixture (300/30 flow speed) environment at 75 mTorr. The silicon was etched by 20–25 μm and then acetone was used to remove the photoresist layer. The blade was then treated with oxygen plasma for 3 min at 150 W and immersed in a 0.1 vol.% OTS/trichloroethylene solution for 20 min at room temperature. After sonicating with toluene for 10 min, the wafer was dried with nitrogen.

Substrate preparation. The bare Si or doped Si wafers with a SiO₂ dielectric (300 nm) were treated by a method published previously to form a highly hydrophobic crystalline OTS monolayer on the surfaces³³. The wafers were cut into pieces (1.5 cm × 3 cm). Then a PDMS stamp (1.2 cm × 2.5 cm) was laminated on the middle area of the substrate to protect the OTS layer. Oxygen plasma (150 W, 200 mTorr of O₂ for 5 s) was used to remove the exposed OTS at the edges of the substrate in order to facilitate a more stable meniscus during coating. After removing the PDMS stamps and cleaning with toluene, the edge-etched OTS-modified substrates were ready for film shearing or electrode deposition. The modified bare Si was used as substrates for the GIXD characterization while modified Si/SiO_x was used as substrates for preparing devices.

Semiconducting film preparation. The polymer solutions for the SS (30 mg ml⁻¹) and SC (10 mg ml⁻¹) CONPHINE semiconducting films were prepared by dissolving the conjugated polymers and SEBS at a weight ratio of 3:7 in chlorobenzene at 90 °C for 1 h. Neat conjugated-polymer solutions of 20 mg ml⁻¹ and 10 mg ml⁻¹ were used to prepare the SS- and SC-neat films. Before shearing, the substrate was placed on a heating plate (50 °C) with the shearing blade tilted at 8° from the horizontal. Solution shearing was performed at coating speeds ranging from 0.5 to 10 mm s⁻¹, with a gap size set the same as the height of the microstructures on the shearing blades. For the unstructured flat blades, the gap was set to 20 μm (equal to the height of both pillars and trenches). A side camera was used to adjust the gap. For each shearing process, 3 μl cm⁻² of solution was injected into the gap with a micropipette. The SC films were spin coated at 1,000 r.p.m. for 1 min. Both the SS and SC films were annealed inside a nitrogen glove box at 150 °C for 1 h.

Morphology characterization. Optical images of the films were taken with a cross-polarized optical microscope (Leica DM4000M). The AFM images were obtained with tapping-mode AFM using a Multimode Nanoscope III (Digital Instruments/Veeco Metrology Group). Thickness measurements were made using AFM.

The thicknesses of the SS film solution sheared at 3 mm s⁻¹ and all of the SC films are between 100 and 130 nm. The thicknesses of SS-CONPHINE films prepared at other speeds are summarized in Supplementary Fig. 5B. Ultraviolet-visible spectra were measured with an Agilent Cary 6000i UV/vis/NIR spectroscope, which was equipped with a rotational polarizer to measure the absorption intensity with the polarization parallel and perpendicular to the shearing/stretching directions. GIXD images in Fig. 1g and Supplementary Fig. 10 were collected in a helium atmosphere in the Stanford Synchrotron Radiation Light Source at beamlines 11-3 and 7-2 with beam energies of 12.7 keV and 14 keV, respectively. The X-ray incidence angle was 0.12°. Numerical integration of the diffraction peak areas was performed using WxDiff. XPS measurements were made on a PHI VersaProbe 3 XPS microprobe. Sputtering was carried out at 5 kV and 20 nA with an Ar 2,500+ gas cluster ion beam gun.

Electrical characterization. The initial electrical characterization was performed on bottom-gate, bottom-contact field effect transistors fabricated by directly solution shearing (spin coating) semiconducting films on top of a rigid device stack (40 nm Au source and drain electrodes on OTS-modified 300 nm SiO₂/Si). The channel length and width are 200 μm and 4 mm, respectively. The capacitance of the dielectric layer is 11.5 nF cm⁻². The fabricated devices were stored under vacuum and tested using a probe station in an ambient environment connected to a Keithley 4200 analyser.

The temperature-dependent field effect transistor characteristics of semiconducting films were measured in a cryostat. Here, the mobility was measured in the linear regime under low drain-source voltage (−6 V), which was assumed to yield a uniform electric field strength along the channel and minimize any effects of heating on our result³⁴.

Fully stretchable devices were prepared as bottom-gate, bottom-contact device structures according to our previously reported method¹⁰. The channel length and width are 200 μm and 4 mm, respectively. The capacitance of the dielectric layer was measured as 1.5 nF cm⁻². All the electrical characteristics of the devices were measured with a Keithley 4200 analyser in an ambient environment. The mobility of semiconducting films was calculated with measured device geometry and dielectric capacitance under strain (Supplementary Table 2).

Roll-to-roll fabrication and characterization. First, the PET substrate was treated with oxygen (150 W, 200 mTorr of O₂ for 2 min) to ensure good wettability. Then a solution of 10 wt% Dextran in H₂O was coated on the PET substrate by a continuous roll-to-roll coating process at a speed of 6 mm s⁻¹ using a flat, unpatterned shearing blade. The gap distance here was set at around 50 μm. The semiconducting layer was then roll-to-roll coated on the top of the dried Dextran layer with a microtrench-structured shearing blade at a speed of 3 mm s⁻¹. Here, the gap of the microtrench blade and the PET substrate was set to the height of the trench. The semiconductor ink (25 mg ml⁻¹) was prepared by dissolving DPPDTSE and SEBS with a weight ratio of 3:7 in chlorobenzene at 90 °C for 1 h. The Dextran or semiconductor ink was fed through a PTFE tube with a 0.5 mm inner diameter by a syringe pump. The PET substrate was heated to 50 °C during the roll-to-roll printing process. A magnetic tension controller was coupled to the feeding roll and used to control the flatness of the PET substrate. After printing, the samples were annealed at 150 °C for 1 h under nitrogen. By soaking in water, the printed semiconductor layer could be easily transferred from the PET substrate to either a PDMS stamp for morphology characterization or a stretchable device stack (bottom-gate, bottom-contact device structure, source and drain electrodes CNTs, dielectric SEBS, gate electrodes CNTs) for electrical performance testing (channel length 200 μm; channel width 4 mm; dielectric capacitance 1.5 nF cm⁻²). The mobility of the semiconducting films was calculated with measured device geometry and dielectric capacitance under strain¹⁰.

Data availability

The authors declare that all data supporting the findings of this study are available within the paper and its Supplementary Information. Other supporting data are available from the corresponding author upon request.

References

- Liu, Y. et al. Aggregation and morphology control enables multiple cases of high-efficiency polymer solar cells. *Nat. Commun.* **5**, 5293 (2014).
- Chortos, A. et al. Highly stretchable transistors using a microcracked organic semiconductor. *Adv. Mater.* **26**, 4253–4259 (2014).
- Nikiforov, O. G. et al. Current-induced Joule heating and electrical field effects in low temperature measurements on TIPS pentacene thin film transistors. *Adv. Electron. Mater.* **2**, 1600163 (2016).