



August 20-22, 2018
SAND2018-7026PE
Grand Junction, Colorado

2018 Long-Term Stewardship Conference

Performance of an In Situ Hydroxyapatite Permeable Reactive Barrier at the Old Rifle Uranium Processing Mill Site

Mark J. Rigali
Sandia National Laboratories

2.1 Groundwater Compliance Challenges

Kenneth H. Williams

Lawrence Berkley National Laboratories

James Szecsody

Pacific Northwest National Laboratories

Robert C. Moore

Pacific Northwest National Laboratories

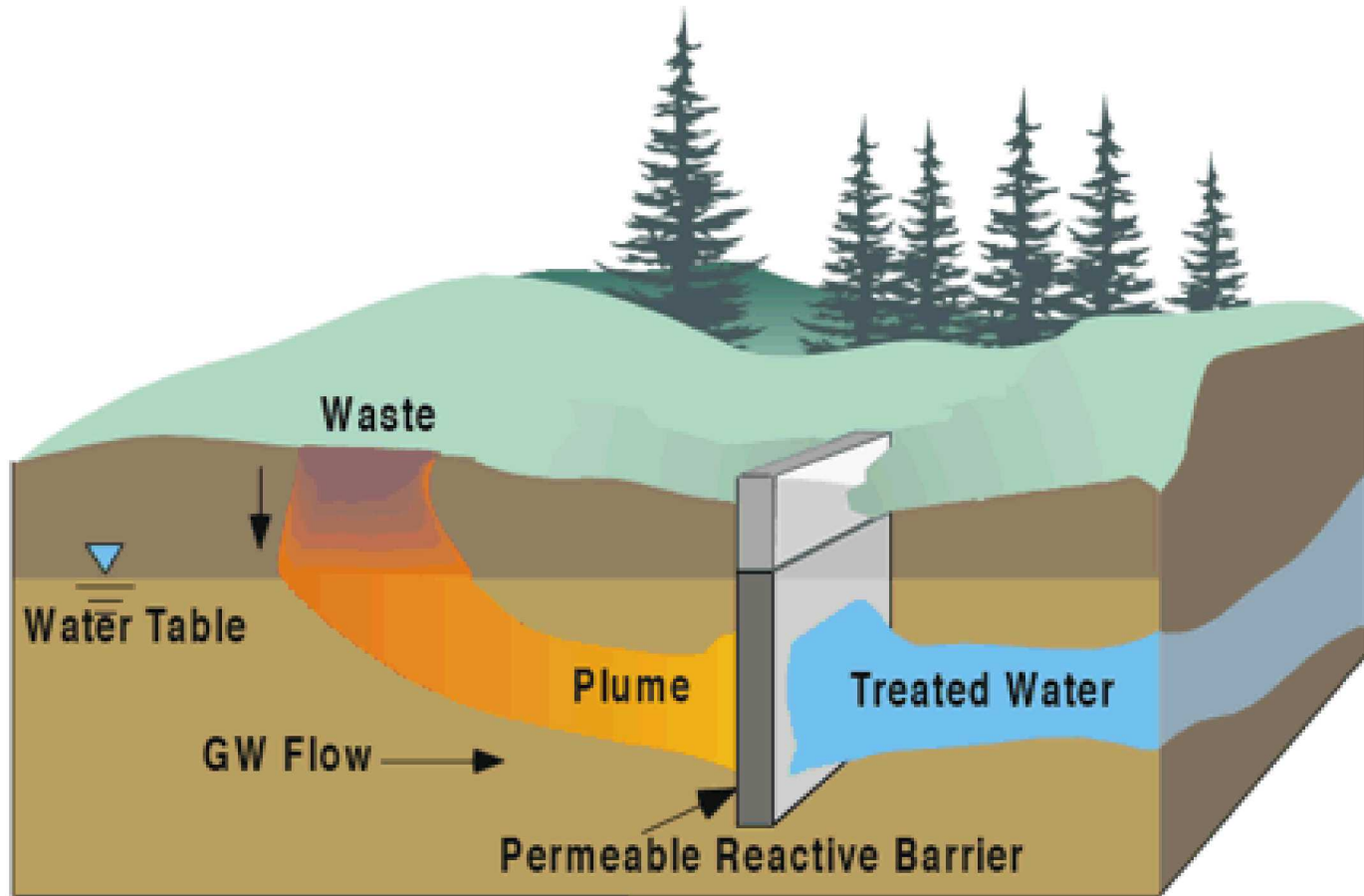
Jon R. Luellen

AECOM

Presentation Outline

- Overview of Apatite Permeable Reactive Barriers (PRBs)
- The Old Rifle Site
- Deployment of the Apatite PRB at the Old Rifle Uranium Mill Site
- Performance of the Apatite PRB for Uranium Remediation
- Summary

Permeable Reactive Barrier (PRB) Technology



Conventional PRB Construction



**Trenching Followed by
Backfilling with a Reactive Media**

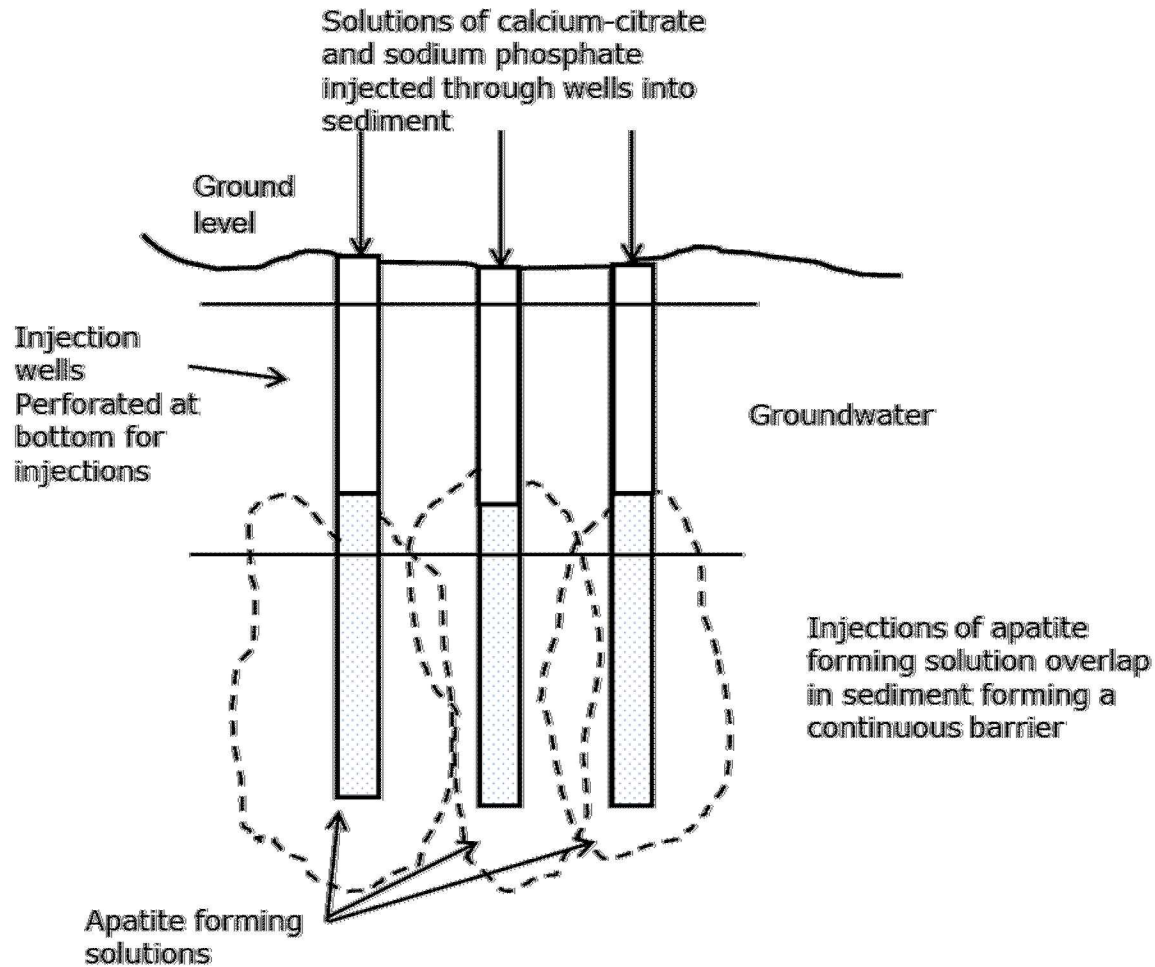


**Jet or Grout Injection of
A Reactive Media**

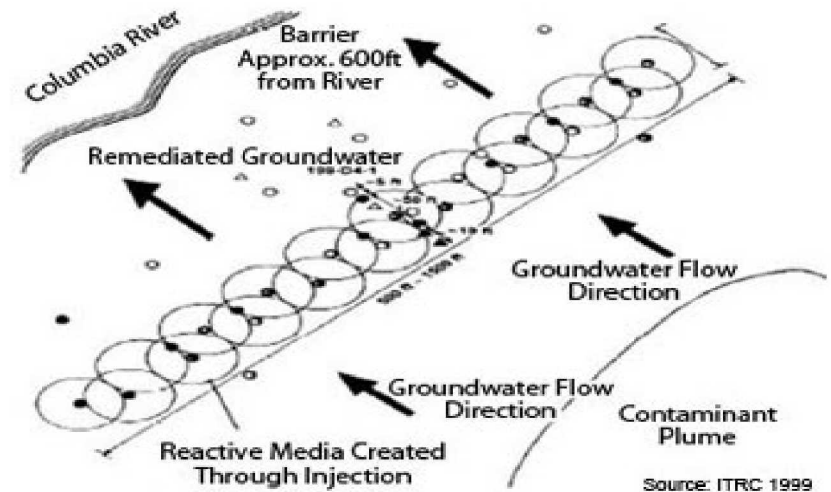
Apatite as a PRB Material

- Composed of calcium phosphate, $\text{Ca}_{10}(\text{PO}_4)_6(\text{OH})_2$
- Common mineral in the environment and as a main component of bone and teeth.
- Very stable in the environment, extremely low solubility.
- Can be used to sequester a wide variety of radionuclides, heavy metals and other contaminants through substitution into the structure or sorption onto the surface as metal phosphate compounds.
- The high affinity for these contaminants, stability and very low solubility make apatite an ideal sorbent for immobilization of many contaminants.
- Can be formed in situ by solution injection in the subsurface...

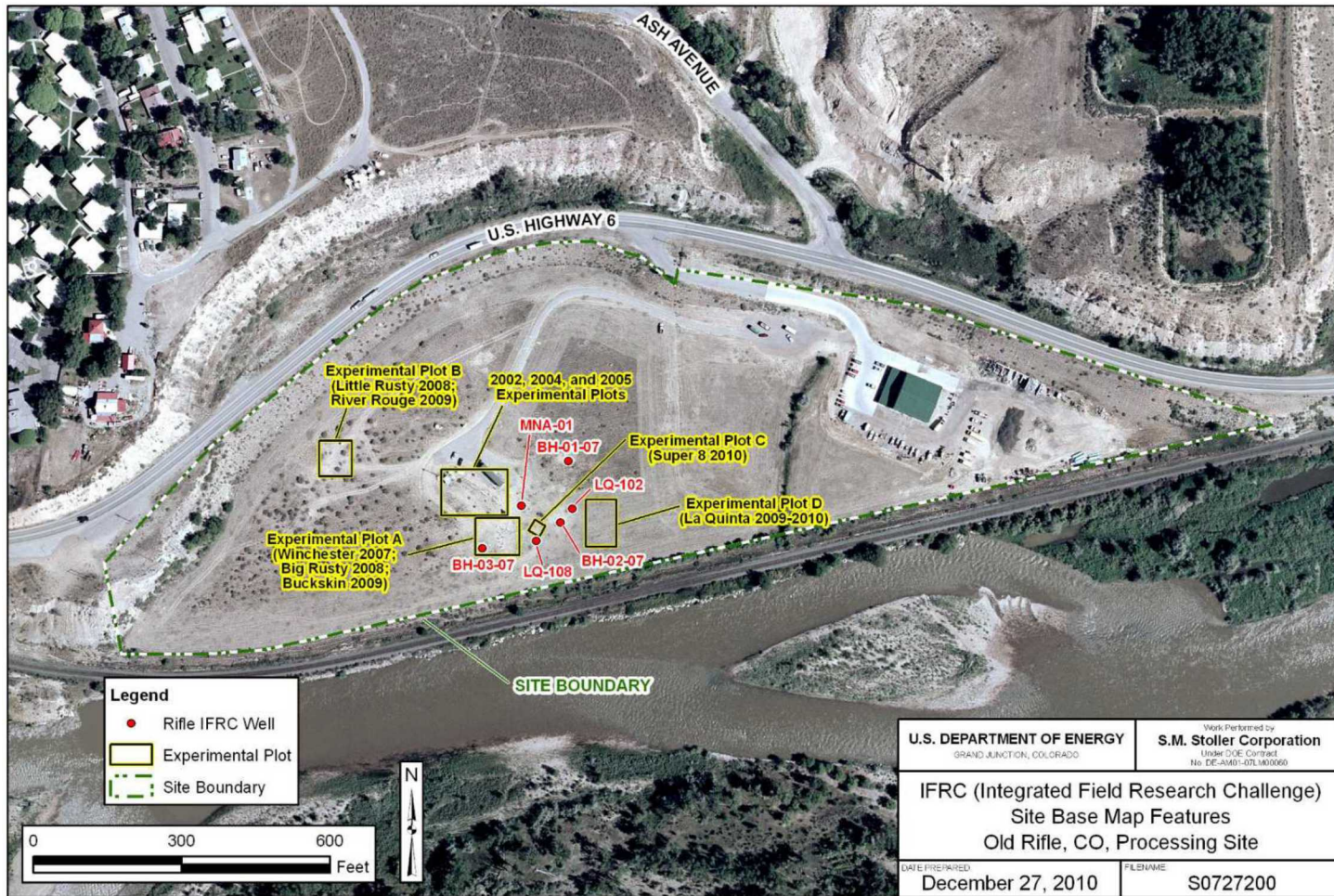
Forming an Apatite PRB



Successfully Deployed at the Hanford Site



Old Rifle Site IFRC Experimental Plots



M:\LTS\11110065\17\000\S07272\S0727200.mxd smithw 12/27/2010 8:49:00 AM

Plot C Well CG-08 Selected for Injection




Field Deployment of Apatite Forming Solutions

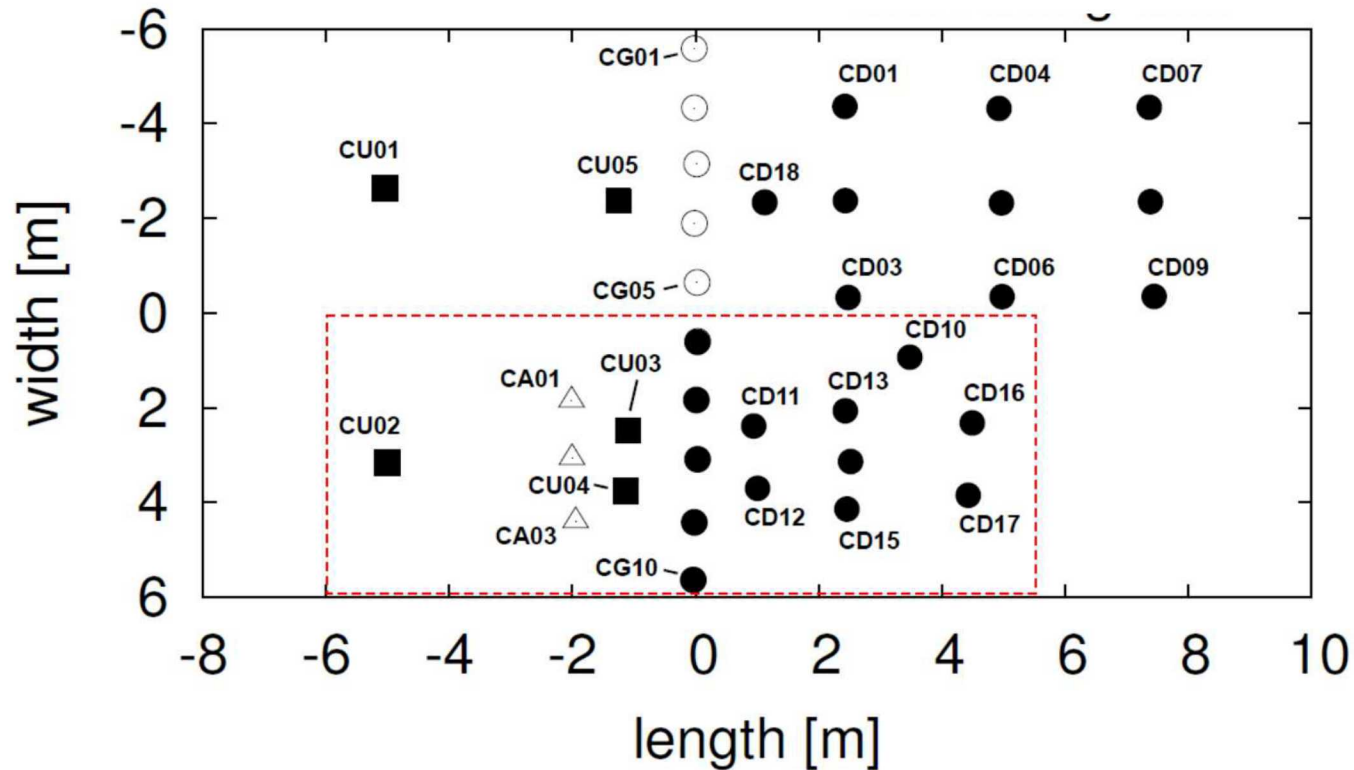
- Injection Formulation:
 - Tank A: Ca-citrate solution containing 40mM of Ca^{2+} and 100mM citrate
 - Tank B: solution containing 40mM phosphate
- Injection of 4,800 gallons of solution total (~ 5 pore volumes)
- Three injections total. (Nov. 14th, 21st, and Dec. 5th, 2017).
- Injection Rate Varied: ~4 to 16 liters per minute.
- Injections completed within 24 to 56 hours.
- Maintained tank temperature at 20-25 C.
- Injection well is CG-08.

Field Deployment of Apatite Forming Solutions

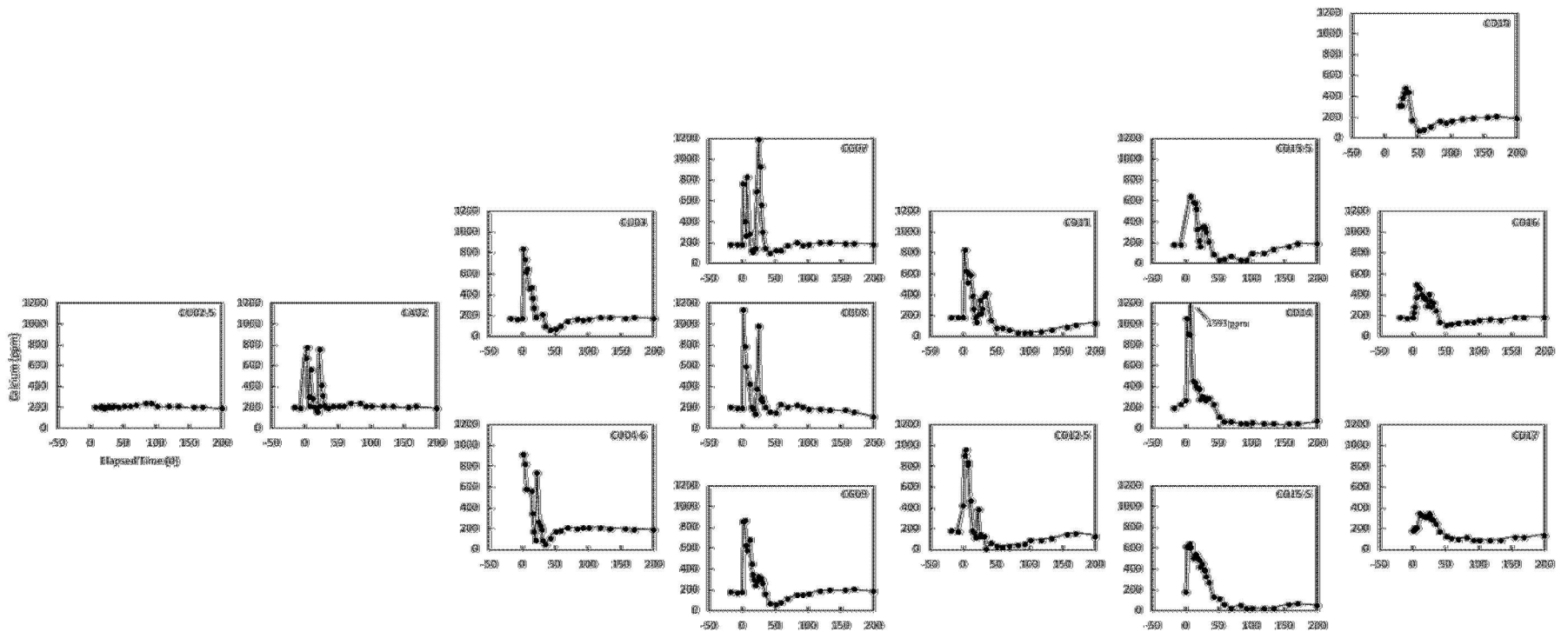


Plot C Wells - Apatite Injection Experiment

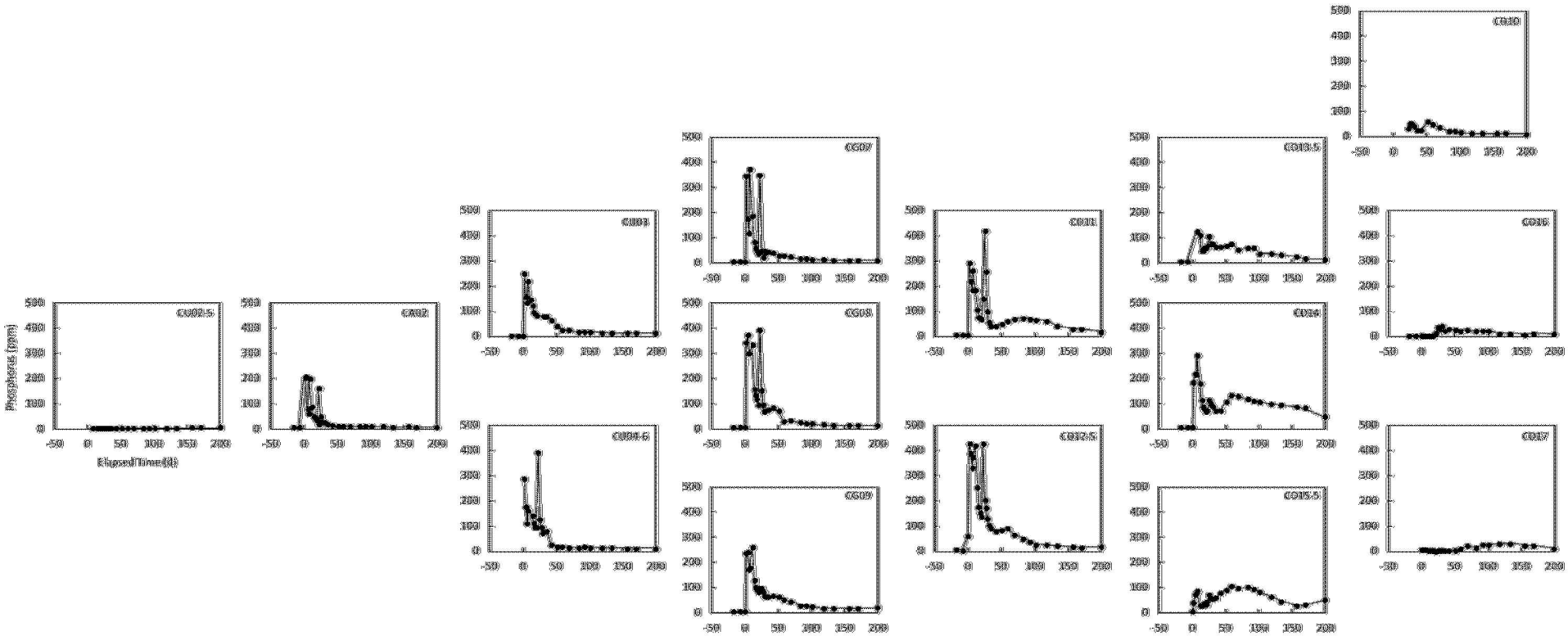
flow direction 



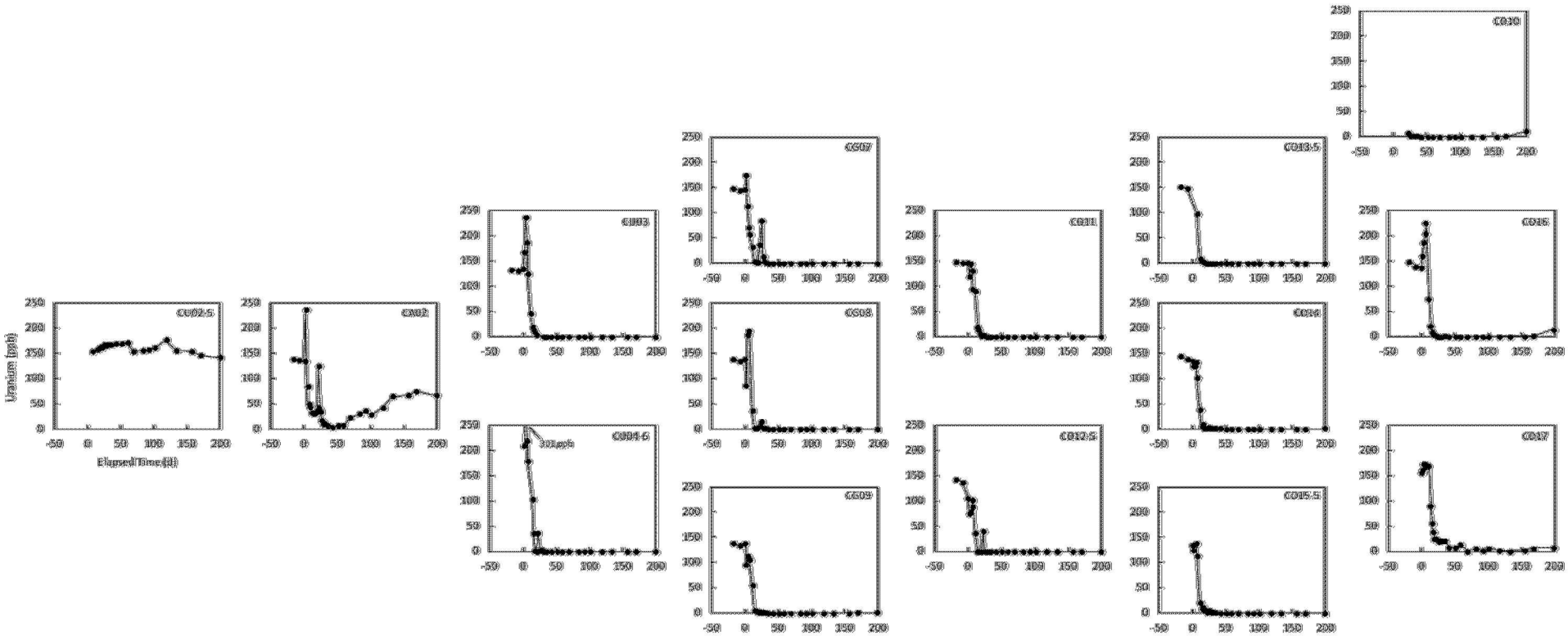
Calcium Concentrations (ppm)



Phosphorous Concentrations (ppm)



Uranium Concentrations (ppb)



Summary

- Apatite is an effective sorbent for a variety of radionuclides and heavy metals.
- It can be deployed as a Permeable Reactive Barrier (PRB) by injecting simple aqueous-based solutions directly into the subsurface.
- The apatite PRB field experiment indicates very effective uptake of uranium after more than 200 days of monitoring.
- Low cost deployment as compared to traditional PRB deployments that is also minimally invasive to the site.