

Si/SiGe Spin, Charge and Hybrid Qubits

SAND2014-15954D

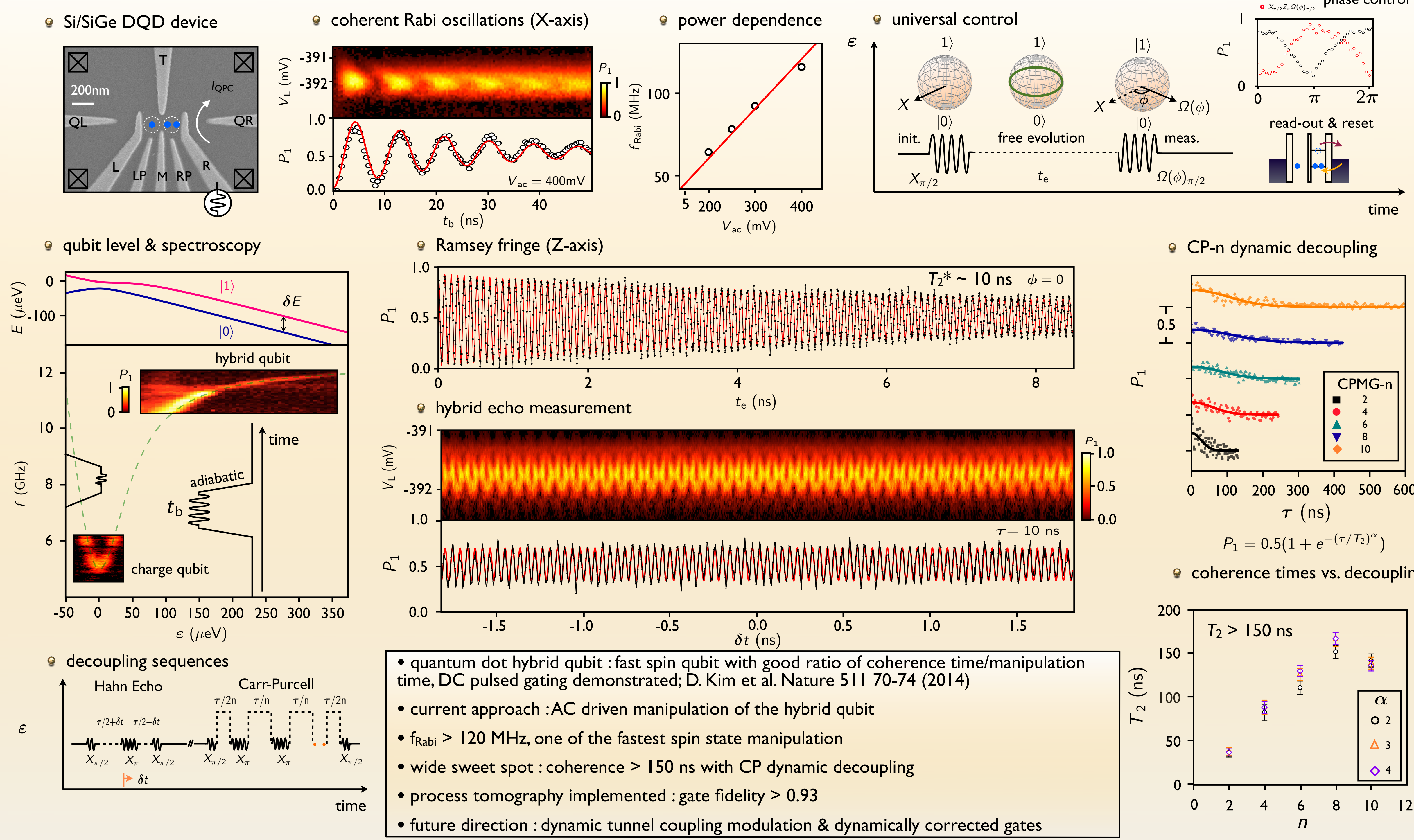


Dohun Kim¹, Xian Wu¹, Daniel R. Ward¹, C. B. Simmons¹, J. R. Prance¹, R. T. Mohr¹, Zhan Shi¹, John King Gamble², Robin Blume-Kohout², Erik Nielsen², D. E. Savage³, M. G. Lagally³, Mark Friesen¹, S. N. Coppersmith¹ and M. A. Eriksson¹

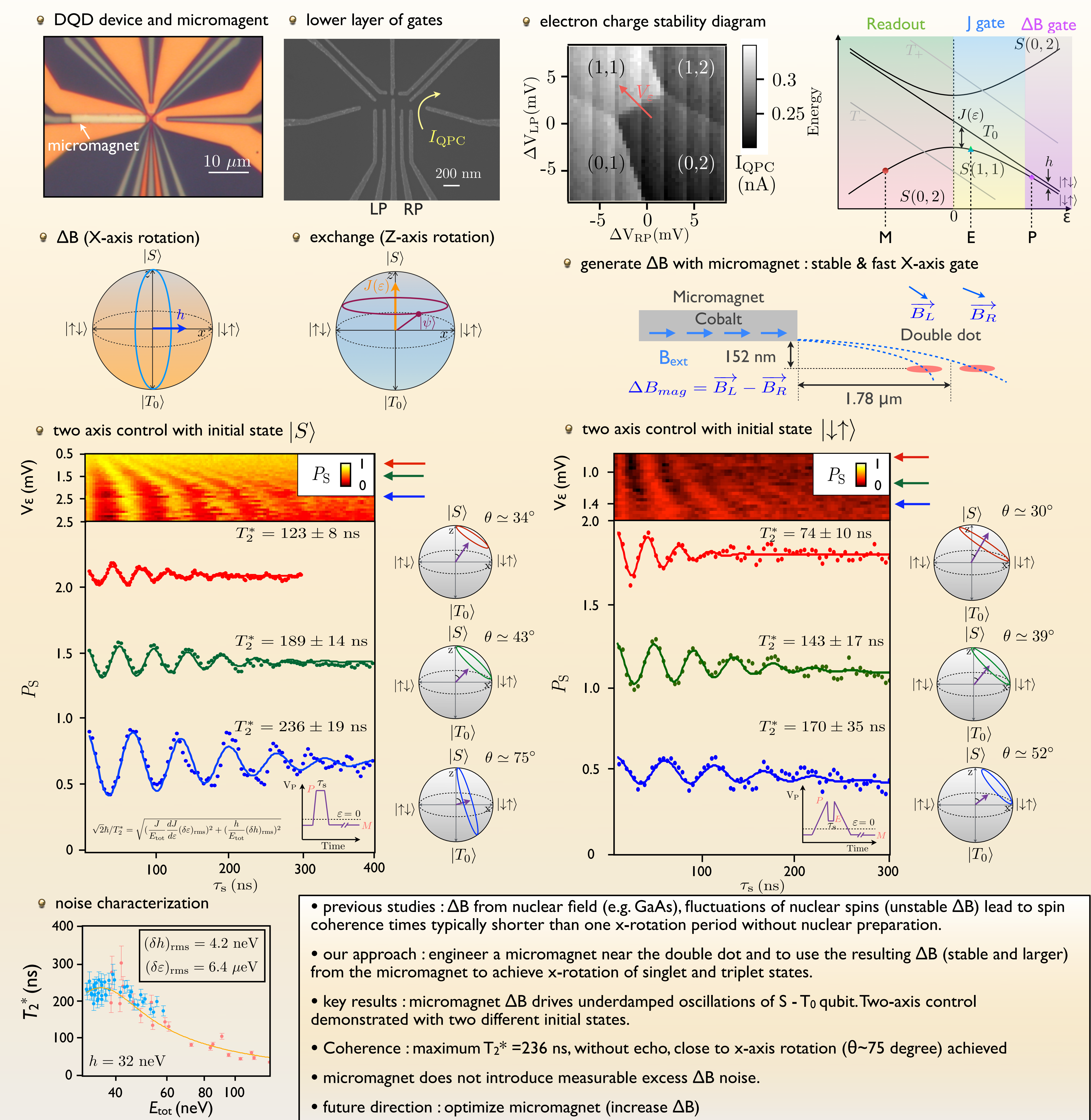
1. Department of Physics, University of Wisconsin-Madison, Madison, WI 53706, USA 2. Sandia National Laboratories, Albuquerque, New Mexico 87185, USA 3. Department of Materials Science and Engineering, University of Wisconsin-Madison, Madison, WI 53706, USA

Acknowledgements: This work was supported in part by ARO (W911NF-12-0607), NSF(DMR-1206915), NSF(PHY-1104660), and by the Laboratory Directed Research and Development program at Sandia National Laboratories. Sandia National Laboratories is a multi-program laboratory managed and operated by Sandia Corporation, a wholly owned subsidiary of Lockheed Martin Corporation, for the U.S. Department of Energy's National Nuclear Security Administration under contract DE-AC04-94AL85000. Development and maintenance of the growth facilities used for fabricating samples is supported by DOE (DE-FG02-03ER46028). This research utilized NSF-supported shared facilities at the University of Wisconsin-Madison.

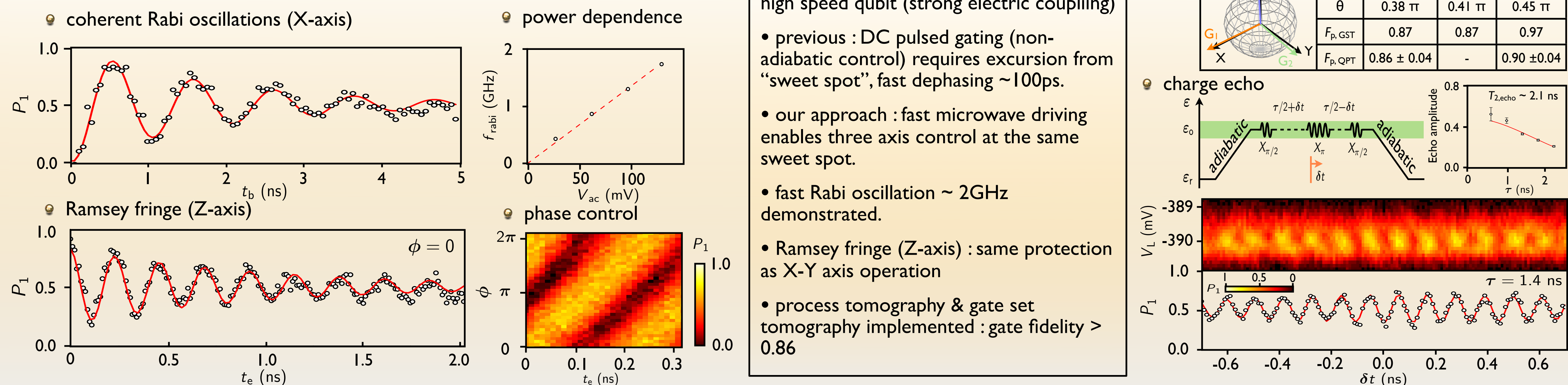
Microwave-driven quantum gates on hybrid qubit



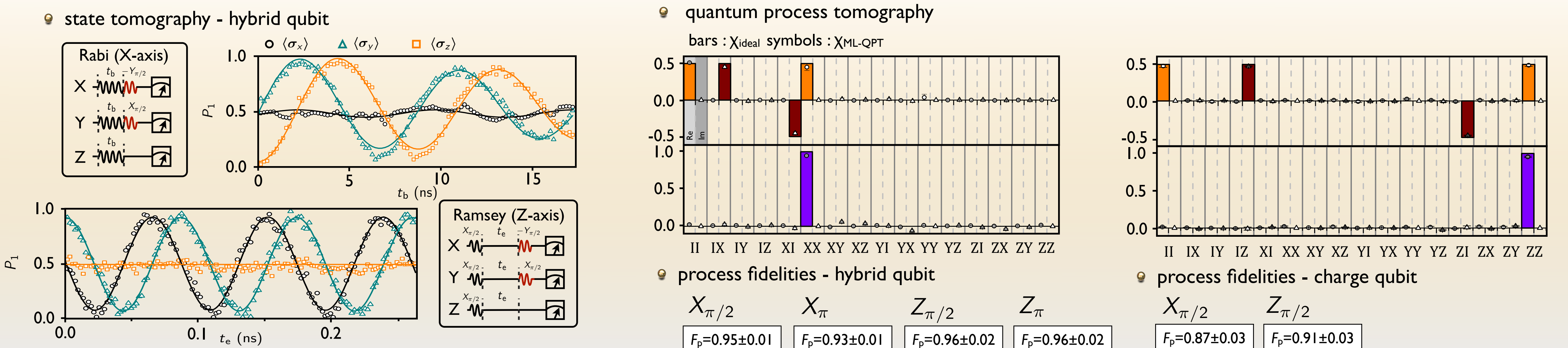
Two axis control of singlet-triplet qubit with integrated micromagnet



Fast quantum dot charge qubit



Tomographic characterization



Scalability & multi-qubit devices

