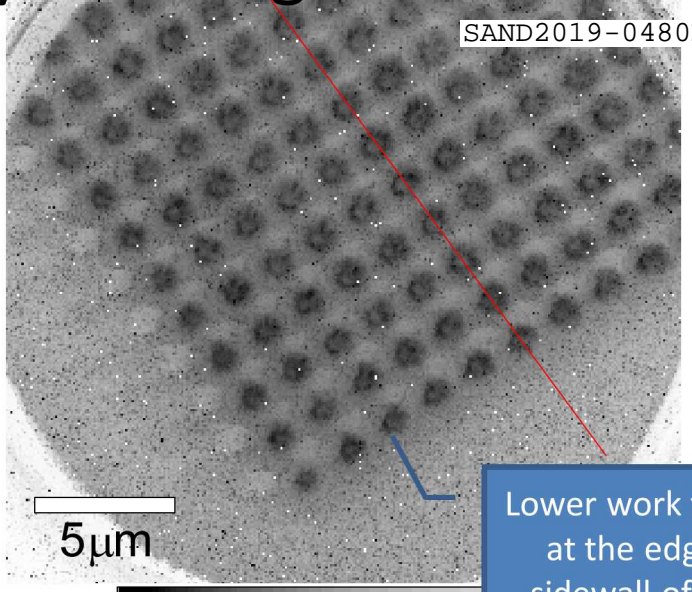
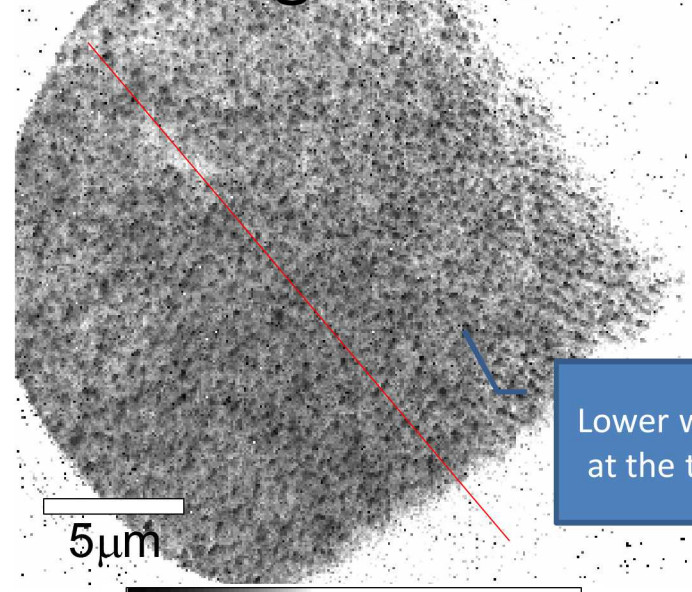


Wet etch region

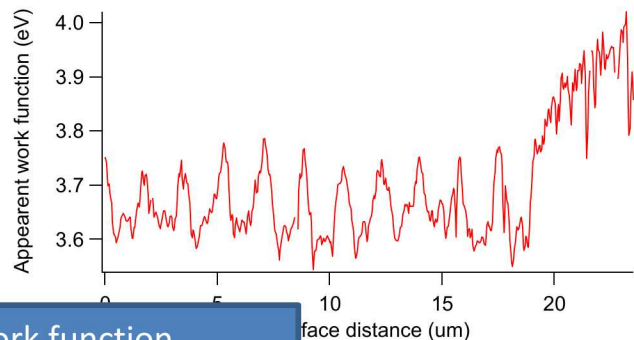
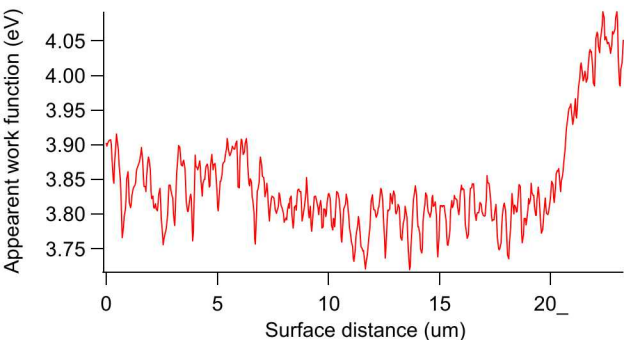
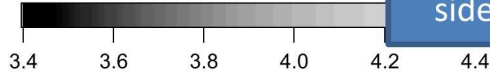
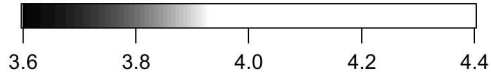
Dry etch region

SAND2019-0480R

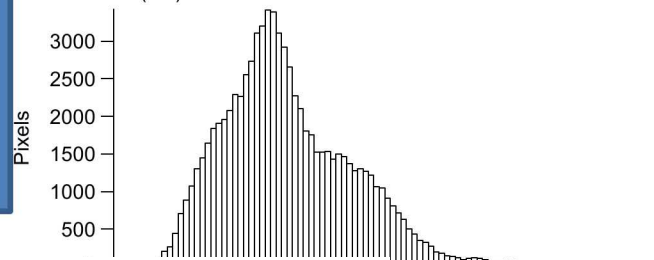
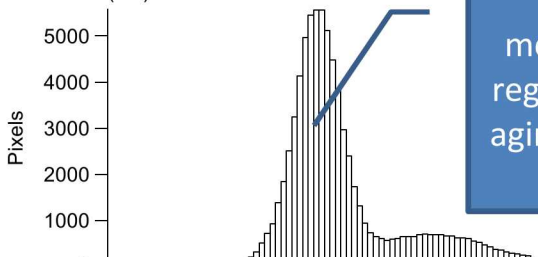


Lower work function at the tips of pillars

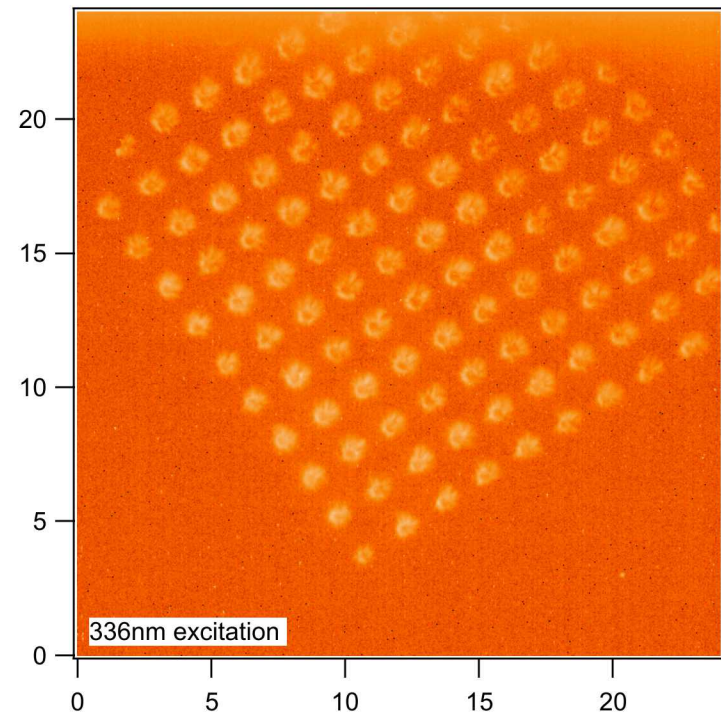
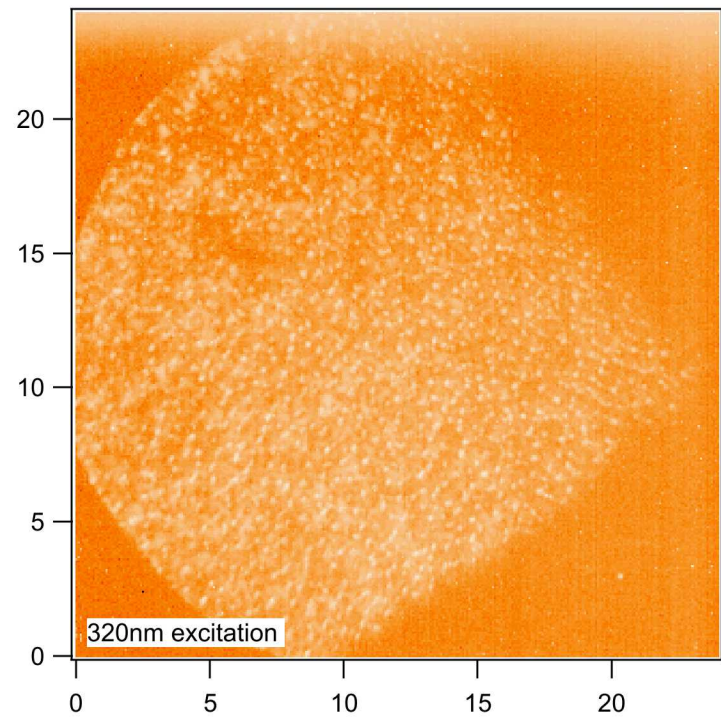
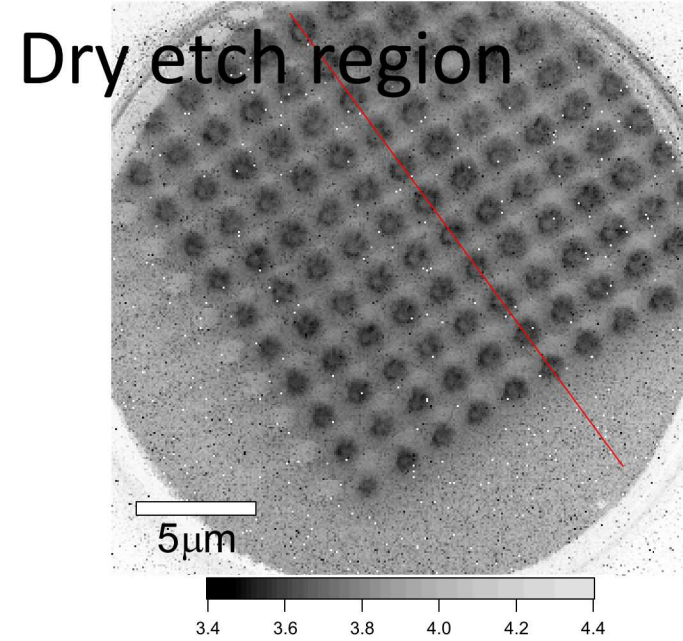
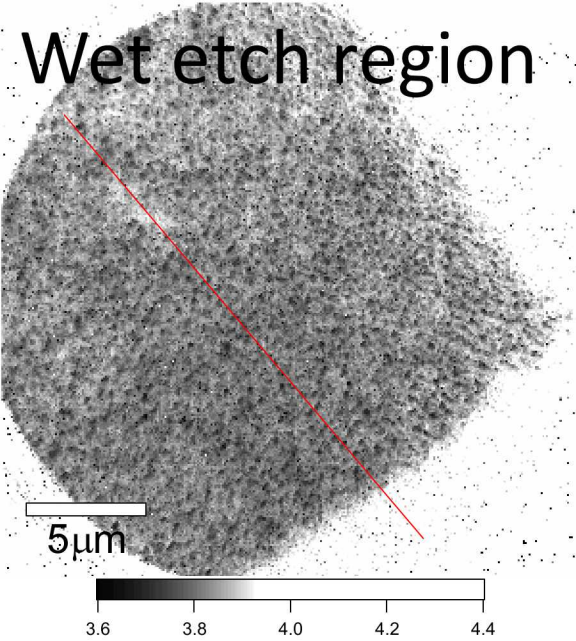
Lower work function at the edges or sidewall of pillars



Line plot of the work function map along the red line



Work function measurement of wet etch region might be affected by aging (2 days older than dry etch region)



Photoemission images just above the emission threshold

- User facility:

- Center for Integrated Nanotechnologies (CINT), SNL, supported by, an Office of Science User Facility operated for the U.S. DOE Office of Science by Sandia National Laboratories (Contract DE-AC04-94AL85000) and Los Alamos National Laboratory (Contract DE-AC52-06NA25396).



Sandia National Laboratories is a multi-mission laboratory managed and operated by National Technology and Engineering Solutions of Sandia, LLC., a wholly owned subsidiary of Honeywell International, Inc., for the U.S. Department of Energy's National Nuclear Security Administration under contract DE-NA0003525.



