

LA-UR-17-29928

Approved for public release; distribution is unlimited.

Title: Displaced A' with SeaQuest

Author(s): Uemura, Sho

Intended for: HPS Collaboration Meeting, 2017-10-25/2017-10-27 (Menlo Park, California, United States)

Issued: 2017-10-30

Disclaimer:

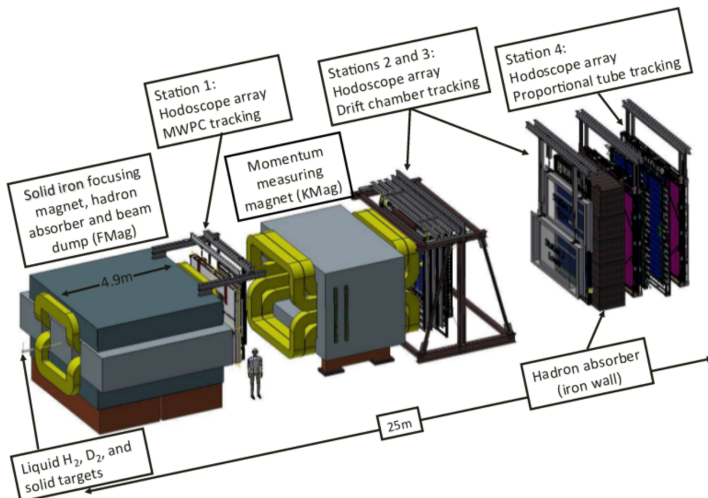
Los Alamos National Laboratory, an affirmative action/equal opportunity employer, is operated by the Los Alamos National Security, LLC for the National Nuclear Security Administration of the U.S. Department of Energy under contract DE-AC52-06NA25396. By approving this article, the publisher recognizes that the U.S. Government retains nonexclusive, royalty-free license to publish or reproduce the published form of this contribution, or to allow others to do so, for U.S. Government purposes. Los Alamos National Laboratory requests that the publisher identify this article as work performed under the auspices of the U.S. Department of Energy. Los Alamos National Laboratory strongly supports academic freedom and a researcher's right to publish; as an institution, however, the Laboratory does not endorse the viewpoint of a publication or guarantee its technical correctness.

Displaced A' with SeaQuest

Sho Uemura
Los Alamos National Laboratory
SeaQuest Collaboration

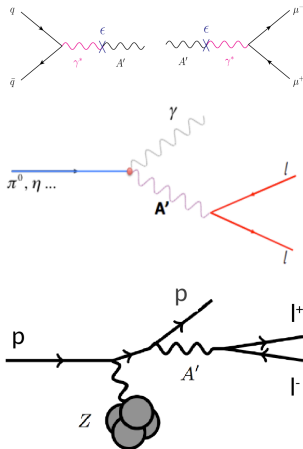
The SeaQuest facility

- Fixed target muon spectrometer, Fermilab 120 GeV proton beam
- Measurement of the nucleon sea quark distribution using Drell-Yan
- Parasitic searches for dark photons approved 2015



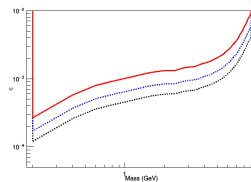
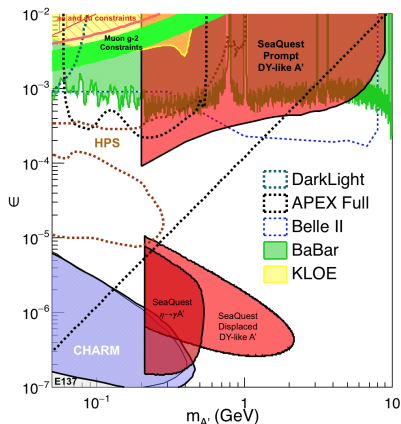
Production and signatures at SeaQuest

- Three dominant production mechanisms: Drell-Yan, meson decay, proton bremsstrahlung
- Branching fraction to $\mu^+\mu^-$ is significant at all $m_{A'} > 2m_\mu$; decay length depends on ϵ
- Two signatures: mass resonance and (at small ϵ) displaced vertices



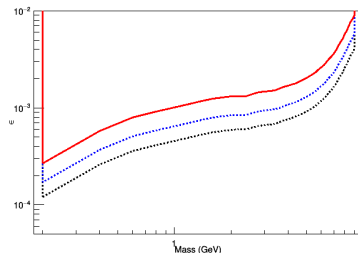
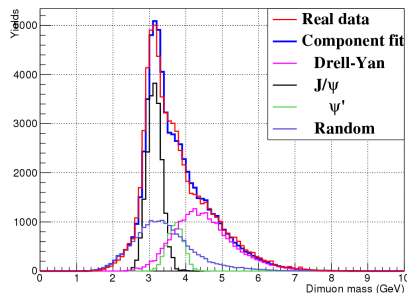
SeaQuest reach

- Bump-hunt and vertexing reach; vertexing reach shows Drell-Yan and η -decay production separately
- Models and assumptions are from last year
- Reach contours with different beam times:
 - ▶ Red: 5 days (in the bag)
 - ▶ Blue: 1 month (possible in 2018)
 - ▶ Black: 4 months



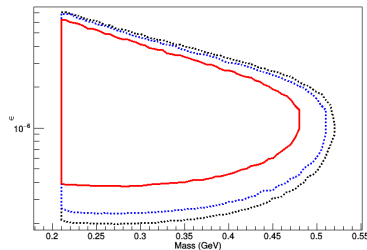
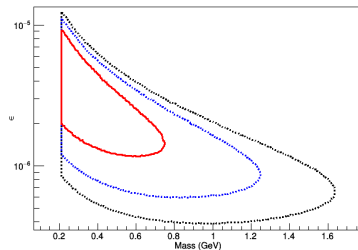
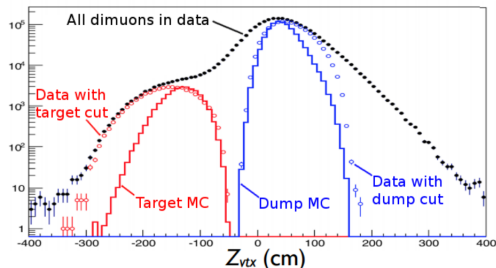
SeaQuest searches for dark photons: prompt

- Prompt dark photons (large ϵ): look for a mass bump above the smooth background
- SeaQuest trigger excludes low masses due to trigger rate limitations; DAQ upgrade (completed this year) should improve the mass range
- Meson resonances will block parts of the mass range
- Mass resolution is limited by multiple scattering in the beam dump



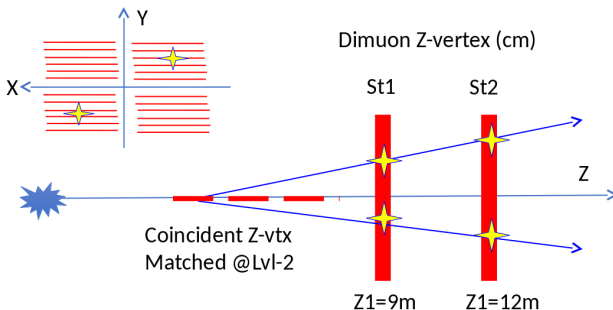
SeaQuest searches for dark photons: displaced vertex

- Small ϵ : look for dimuon vertices deep inside the beam dump
- Requires a new trigger for low-mass displaced vertices, which was commissioned this year
- Vertex tails have not been studied, particularly at low mass



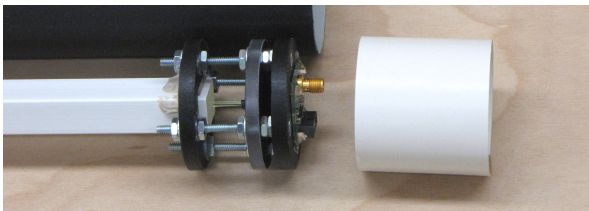
Displaced vertex trigger

- Two stations of fine-grained scintillator hodoscopes measure track Y
- FPGA trigger extrapolates tracks to the beam plane and fires on pairs of tracks with matching Z



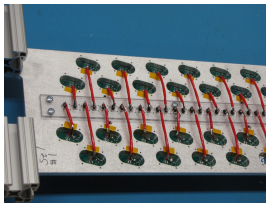
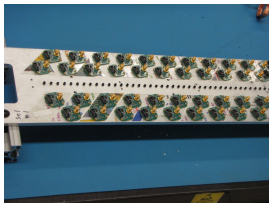
Trigger hodoscopes

- Extruded scintillator bars detect charged particles, wavelength-shifting fibers collect light and transport it to SiPMs
- Station 1: four boxes, 80 1×1 cm bars each
- Station 2: four boxes, 50 2×2 cm bars each



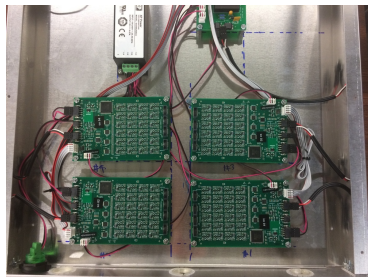
Readout and services

- Postage-stamp preamps read out the SiPMs and send signals to discriminators
- Power supplies provide independent control of every SiPM bias voltage
- Trigger decision made using CAEN V1495 FPGA boards



Power supply

- SiPMs need individually controllable bias voltages (520 channels!); preamps need 6V
- SiPM bias board design contributed by Fermilab, modified to match our requirements
 - ▶ Each board takes bulk HV and LV supplies, regulates down 24 bias voltages and a single 6V supply
 - ▶ Voltage and current readbacks for all channels, plus temperature readout
- 24 “power boards” total, housed in 6 “power boxes”



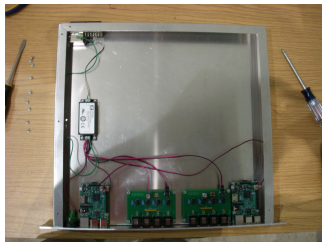
Power supply: distribution

- “Distribution board” passes bias and 6V into the box



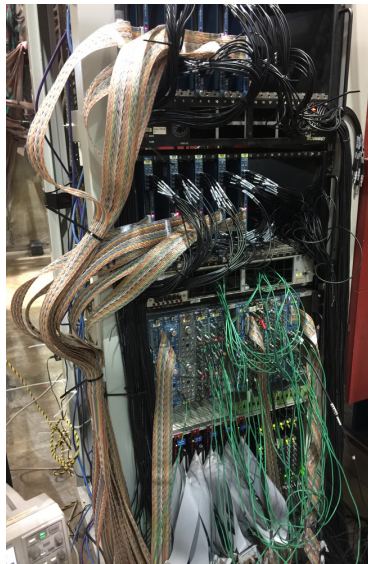
Power supply: control

- Power boards are controlled using I2C protocol; we developed a system to control all 24 boards from a pair of Raspberry Pi computers
 - ▶ “Mux board” in each power box contains an I2C switch and an I2C buffer to drive a long Ethernet cable
 - ▶ Cables run to “master boards” with corresponding buffers; single “master box” holds Pis and master boards
- This solution keeps sensitive electronics away from the beam, and simplifies control software
- I2C is widely used and this scheme can be used to network any set of boards with I2C control



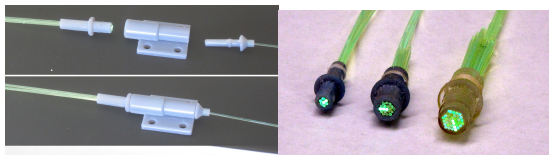
Readout electronics: cabling

- Short coaxial cables connect preamp outputs to patch panel
- Long coaxial cables connect patch panel to CAMAC discriminators
- Ribbon cables connect discriminators to trigger boards and TDCs



Calibration system

- LED calibration system tests/monitors function of all channels
- LED pulser boards generate narrow light pulses
- 3D-printed fiber couplers fan out a single pulser channel from a commercial connector to 19 bare fibers
- Fibers couple light into the scintillator bars

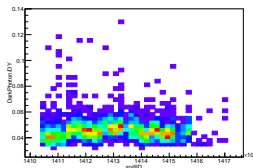


Trigger FPGA development

- Dark photon trigger uses the CAEN V1495 FPGA board (same as E906 trigger)
 - ▶ Four “L1” V1495s, one for each quadrant, trigger on displaced single tracks in St-1, St-2, and E906 hodoscope H4
 - ▶ “L2” trigger is a coincidence between L1 boards with matching vertex Z
 - ▶ Dark photon trigger firmware is based on E906 firmware, with modifications
- Lookup table redesigned for dark photon trigger
- A full quadrant needs $80+50+8=138$ inputs per V1495, E906 firmware only supports 96
 - ▶ Modified various parts of the E906 firmware (TDC, data format, interface to DAQ software) to allow for up to 160 inputs

Installation and commissioning

- Trigger hodoscopes installed on the SeaQuest beamline this spring
- Detectors and trigger electronics tested and timed in
- Displaced vertex trigger rate is $\sim 5\%$ of the SeaQuest Drell-Yan trigger, acceptable for parasitic running
- 5 days of good data taken with the displaced vertex trigger before accelerator shutdown



Schedule and prospects

- This year's commissioning data is sufficient to understand the real backgrounds and sensitivity of the displaced vertex search
 - ▶ Expect updated reach estimates before next fall
 - ▶ Some physics reach may be possible with this data
- SeaQuest will run with polarized target (E1039) in 2018 and 2019: dark photon search will run parasitically
- Possible PID upgrade (using recycled PHENIX EMCal) may add sensitivity to dielectron decay channel

Backup: Displaced vertex trigger hodoscopes

- Hardware delivered this year:
 - ▶ Hodoscope boxes and prototypes
 - ▶ Readout and calibration systems
 - ▶ Power supply system
 - ▶ FPGA trigger
- Installed and commissioned at Fermilab, and recorded physics data

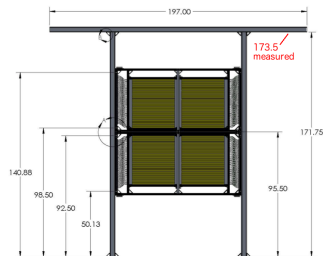
Backup: Detector design

- Extruded scintillator bars detect charged particles, wavelength-shifting fibers collect light and transport it to the SiPMs
- Station 1: four boxes, 80 1-cm bars each
- Station 2: four boxes, 50 2-cm bars each



Backup: Mechanical structure

- Frame modified to minimize material in the detector acceptance
- Survey monuments for reproducible positioning
- Boxes are light-tight with patch panels for signals and voltages, ventilation flanges for air cooling (if necessary)
- Quadrants are bolted together using 80-20 hardware, then bolted to I-beams



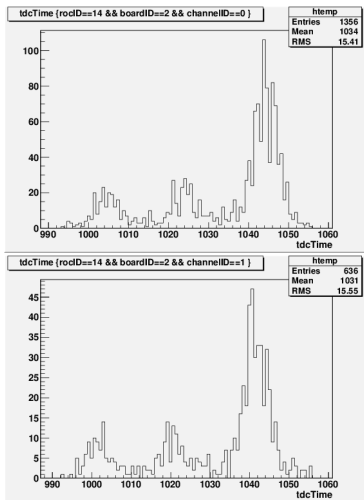
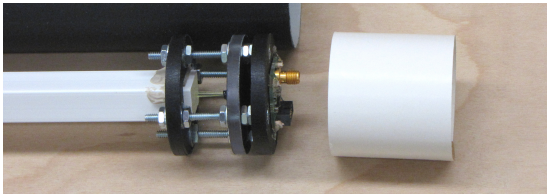
Backup: Readout electronics: preamps

- “Postage stamp” x10 preamp design contributed by Fermilab, with modification to the pulse shaper
- Benchtop tests confirm gain degradation in magnetic field is acceptable
- SiPMs and preamps are mounted on “preamp plate”
- All components electrically isolated from plate to avoid noise pickup
- Twisted-pair pigtail connects SiPM to preamp



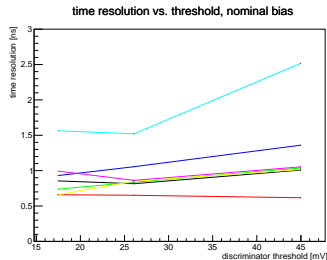
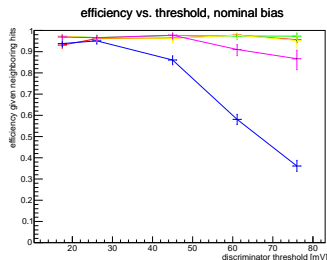
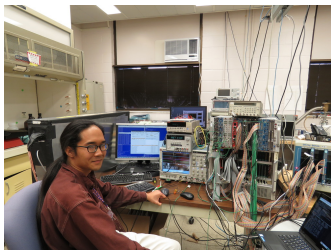
Backup: Single-bar beam test

- Single-bar test units: 1-cm and 2-cm units built and tested on the beam at SeaQuest in March
- Plots on right (2-cm on top, 1-cm on bottom) show hit times relative to E906 Drell-Yan trigger
 - ▶ Small peaks are random particles from other beam buckets, big peak is in time with the trigger
- Proved the system works with real beam, in the real environment



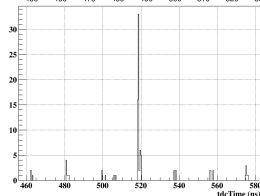
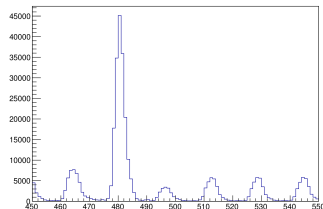
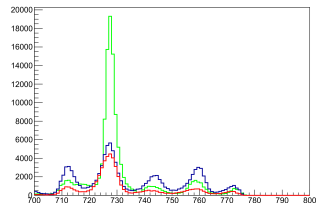
Backup: Seven-bar cosmic test

- Instrumented the first seven bars of a St-2 hodoscope box, take data with a test setup of the E906 DAQ
- Understand efficiency and time resolution as a function of threshold, debug light collection issues, test different options for the long coaxial cables



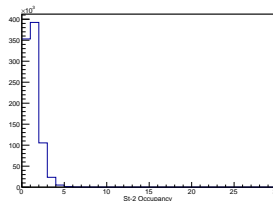
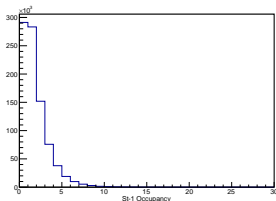
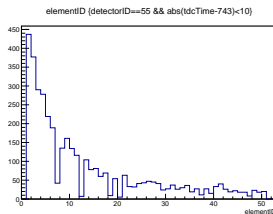
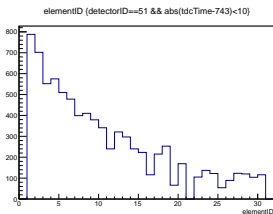
Backup: Timing in

- Input delays must be adjusted to compensate for time-of-flight and cable delays
- All quadrant triggers must fire in time with each other, and the final dark photon trigger must have the same latency as the E906 DY trigger
- Top: hit times after delay adjustment (green: St1, blue: St2, red: H4)
- Middle: time distribution of one quadrant's trigger signal
- Bottom: time distribution of final dark photon trigger

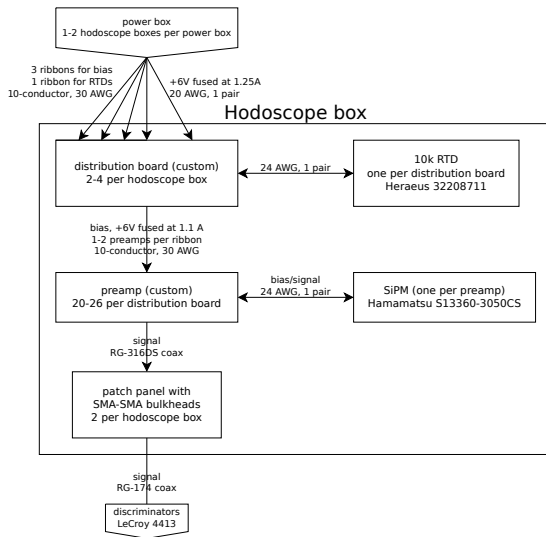


Backup: Performance

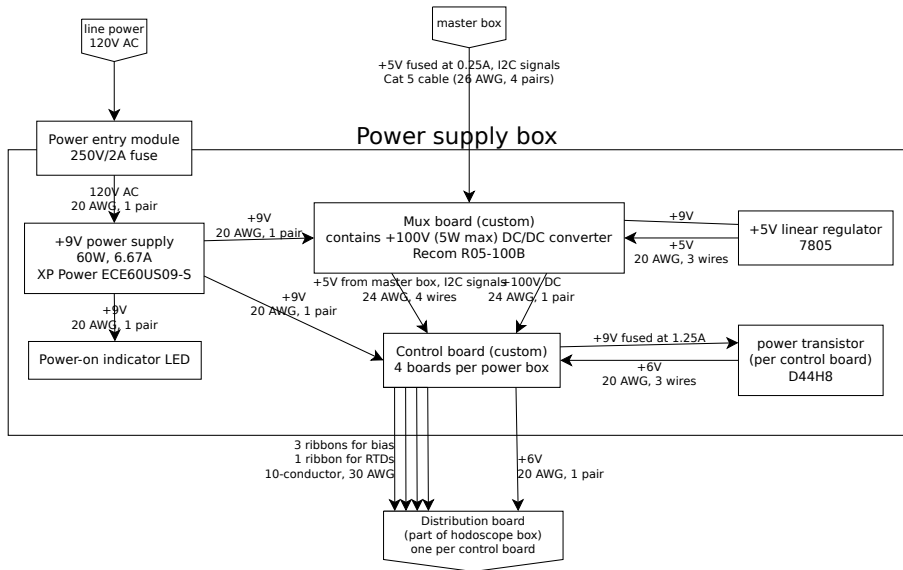
- St-1 on left, St-2 on right; hit rates on top, occupancy on bottom
 - ▶ Note: for commissioning, only 30/80 innermost St-1 bars were read out (outer bars do not correspond to displaced tracks)
- Consistent performance aside from a few bad channels



Backup: hodoscope block diagram



Backup: power box block diagram



Backup: master box block diagram

