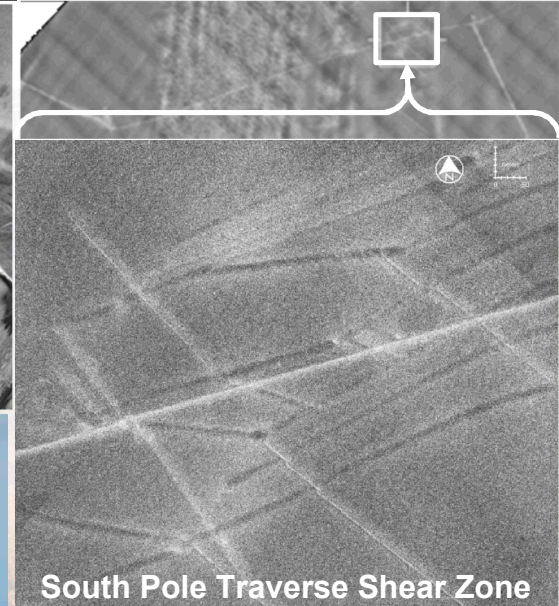
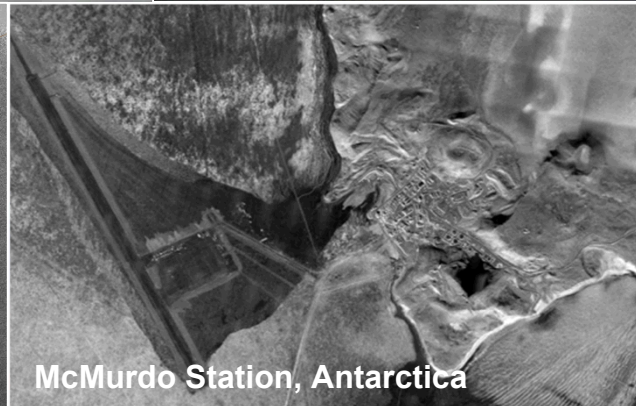
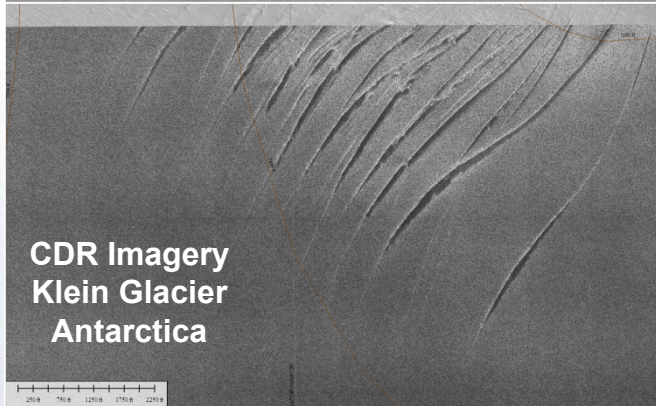
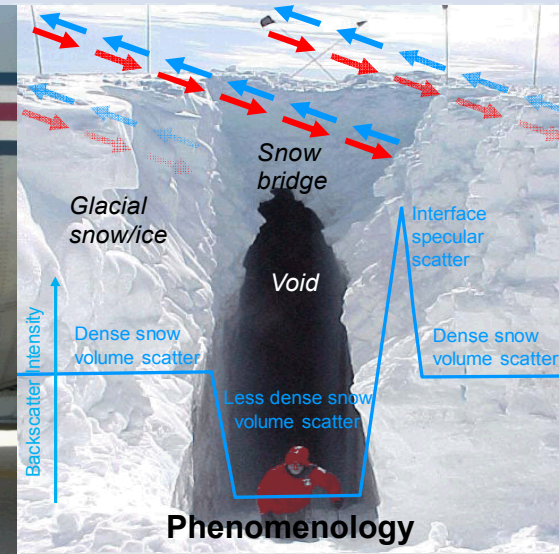
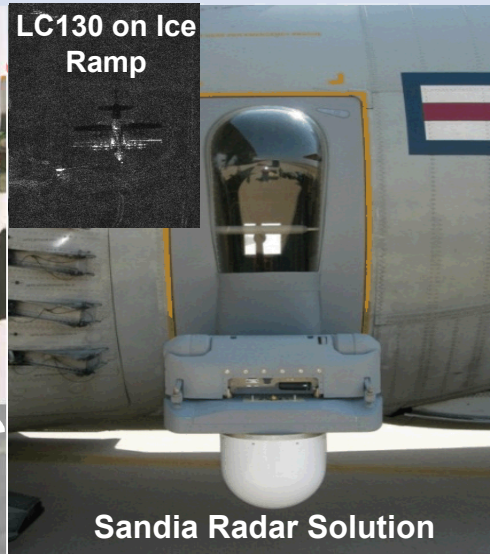


Operational Crevasse Detection Radar

SAND2016-8475PE



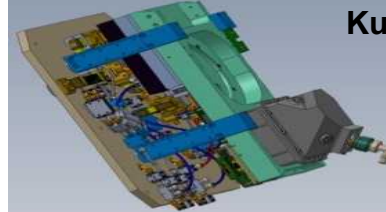
Radar Experimental Capabilities

Facility for Advanced RF and Algorithmic Development (FARAD)

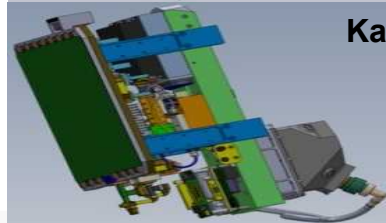
- **X-Band (9.6 GHz)**
 - Fully polarimetric
 - Fully integrated dual-channel front end
- **Ku-Band (16.8 GHz)**
 - Quad-phase-center antenna
 - 4-channel front end
 - Dual receive channel
- **Ka-Band (35 GHz)**
 - Ultra-fine resolution
 - Azimuth monopulse antenna
 - Low-minimum detectable velocity simultaneous SAR/GMTI
- **DeHavilland DHC-6**



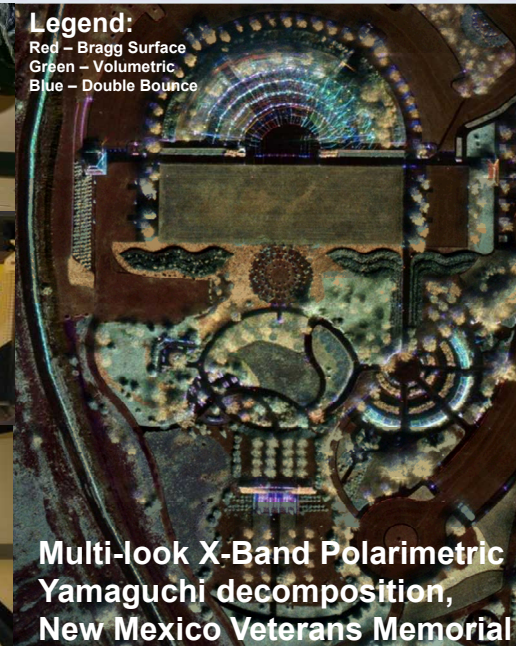
X-Band



Ku-Band



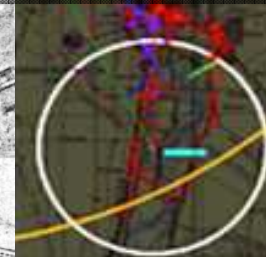
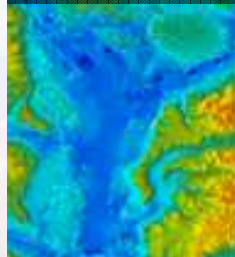
Ka-Band



Legend:
Red – Bragg Surface
Green – Volumetric
Blue – Double Bounce

Multi-look X-Band Polarimetric Yamaguchi decomposition, New Mexico Veterans Memorial

Terrain Mapping, Change Detection, GMTI, Marine & Littoral



Twin Otter Airborne Platform