

LA-UR-17-26683

Approved for public release; distribution is unlimited.

Title: LANL Meteorology Program

Author(s): Bruggeman, David Alan

Intended for: Powerpoint handout for EMS audit

Issued: 2017-08-01

Disclaimer:

Los Alamos National Laboratory, an affirmative action/equal opportunity employer, is operated by the Los Alamos National Security, LLC for the National Nuclear Security Administration of the U.S. Department of Energy under contract DE-AC52-06NA25396. By approving this article, the publisher recognizes that the U.S. Government retains nonexclusive, royalty-free license to publish or reproduce the published form of this contribution, or to allow others to do so, for U.S. Government purposes. Los Alamos National Laboratory requests that the publisher identify this article as work performed under the auspices of the U.S. Department of Energy. Los Alamos National Laboratory strongly supports academic freedom and a researcher's right to publish; as an institution, however, the Laboratory does not endorse the viewpoint of a publication or guarantee its technical correctness.

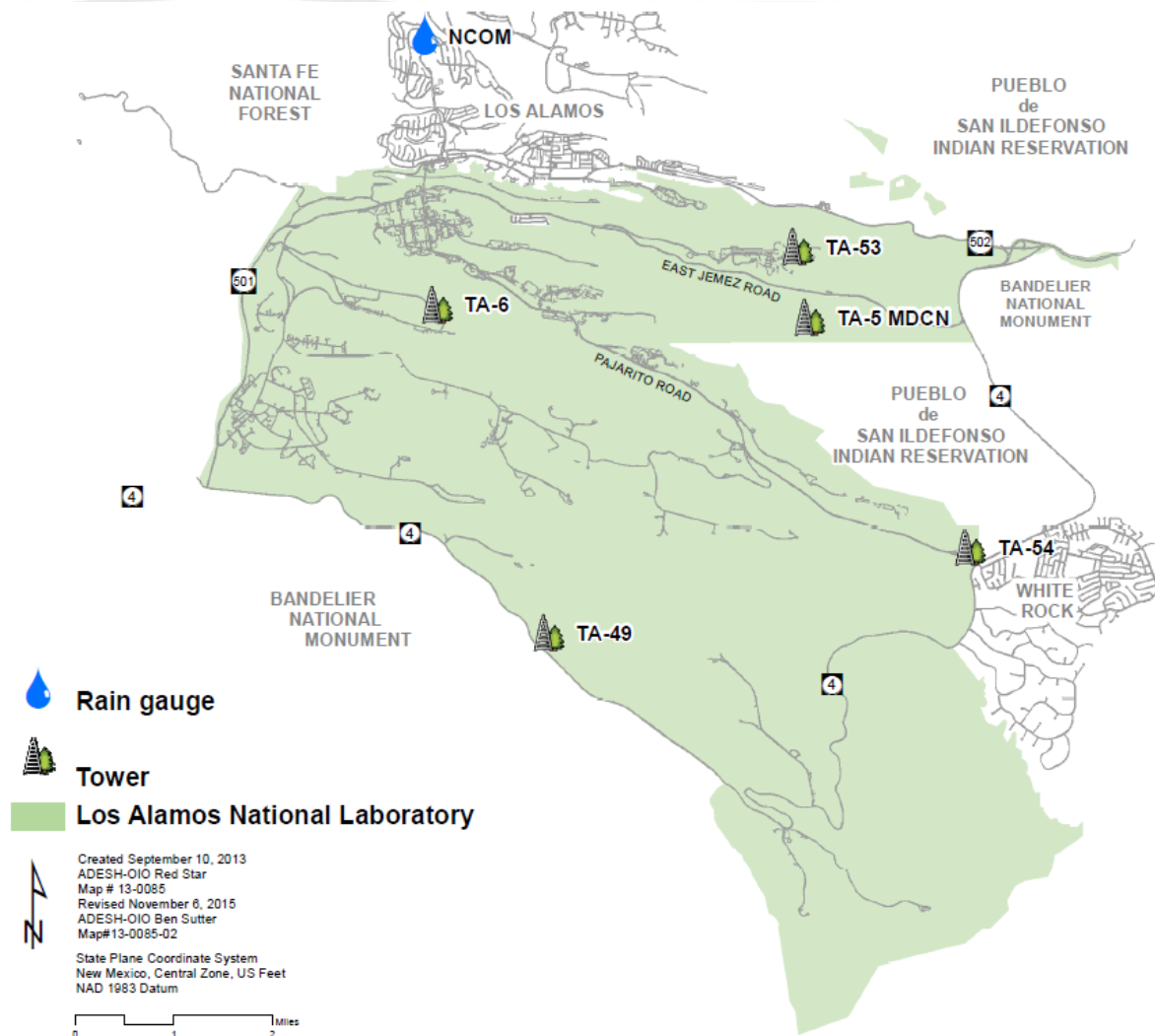


LANL Meteorology Program

David Bruggeman
Greg Stanton
Melissa Coronado

8/2/2017

UNCLASSIFIED



This map was created for work processes associated with the 2009 Environmental Surveillance Report. All other uses for this map should be confirmed with LANL EP WES staff.

UNCLASSIFIED

Slide 2

Primary Job Assignments

- Maintaining calibrated instrumentation and quality assured data to support regulatory compliance, DOE Order compliance, and operational needs
- Providing meteorology data analysis and weather forecasting support to routine LANL operations
- Providing emergency response dispersion modeling and weather forecasting.

UNCLASSIFIED

Slide 3

Use of Meteorology Data

- LANL construction standards
- Inclement weather forecasting
- LANL research support (weapons testing, high energy experiments, climate change, etc.)
- Outdoor work scheduling (HE destruction, construction, tower/roof operations, etc.)
- OSHA safety support (e.g. exhaust duct testing)
- Site Sustainability/Climate change adaptation planning

UNCLASSIFIED

Slide 4

The Weather Machine

LOS ALAMOS NATIONAL LABORATORY

[LANL Observations](#)[Regional U.S. Observations](#)[Forecast Products](#)[LANL Climatology](#)[Data Requests](#)

LANL Welcome... Today's Weather Almanac »



Welcome to the Weather Machine! The Weather Machine provides access to the latest meteorological observations, climatological information, and weather forecast products for the Los Alamos area. Questions/Comments? [Contact us](#) »

Hover over image for caption...

LANL Current Conditions... [More Data](#) »

Tower (tower):	TA6	TA49	TA53	TA54
Date (mm/dd):	8/1	8/1	8/1	8/1
Time (hh:mm):	07:45	07:45	07:45	07:45
Temp (°F):	65.5	66.6	65.7	66.9
Wind Chill (°F):	65.5	66.6	65.3	66.9
Dew Point (°F):	50.7	51.1	51.4	52.9
RH (%):	59	57	60	60
Speed (mph):	7.4	9.2	11.9	10.5
Dir (from):	NNE	NNE	NNE	NE
Precip Today (in):	0.00	0.00	0.00	0.00

NOTE: All times are reported in MST.

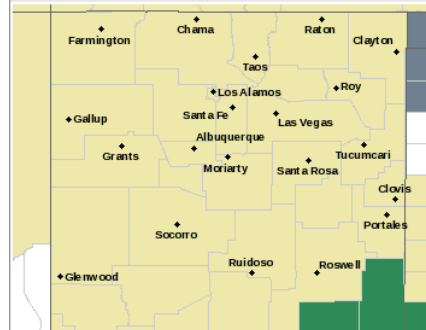
Weather Related Links...

- Los Alamos 7-Day Forecast
- Zone Forecast for Jemez Mountains
- Zone Forecast for Lower Chama Valley
- Zone Forecast for Santa Fe Metro Area
- Hazardous Weather Outlook
- NOAA Albuquerque Forecast Office

NATIONAL WEATHER SERVICE - LOS ALAMOS FORECAST

For the most current and accurate weather information including forecasts, watches, warnings and advisories for the Los Alamos area, please go to the [National Weather Service Site](#)

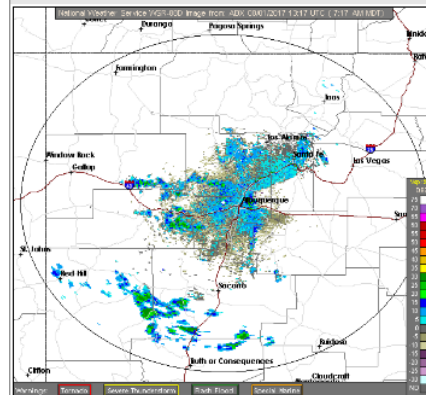
Regional Weather Forecast Map...



[SHOW/HIDE LEGEND](#)

[Click city to view National Weather Service Data.](#)

Albuquerque Radar (Composite Reflectivity)...



[Click map to view other radar options.](#)

UNCLASSIFIED

Slide 5