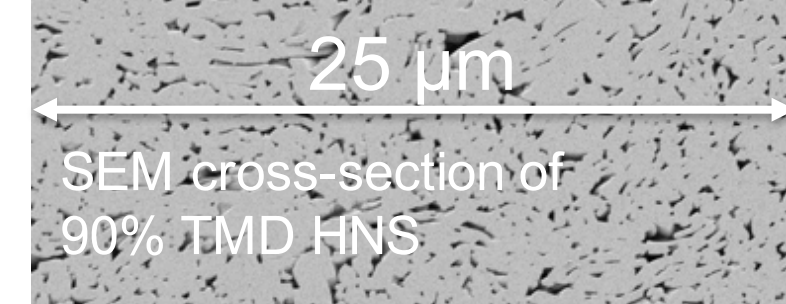


Ryan R. Wixom, Joseph D. Olles, Robert Knepper, Alexander S. Tappan, and Cole D. Yarrington

Ryan R. Wixom, Joseph D. Olles, Robert Knepper, Alexander S. Tappan, and Cole D. Yarrington

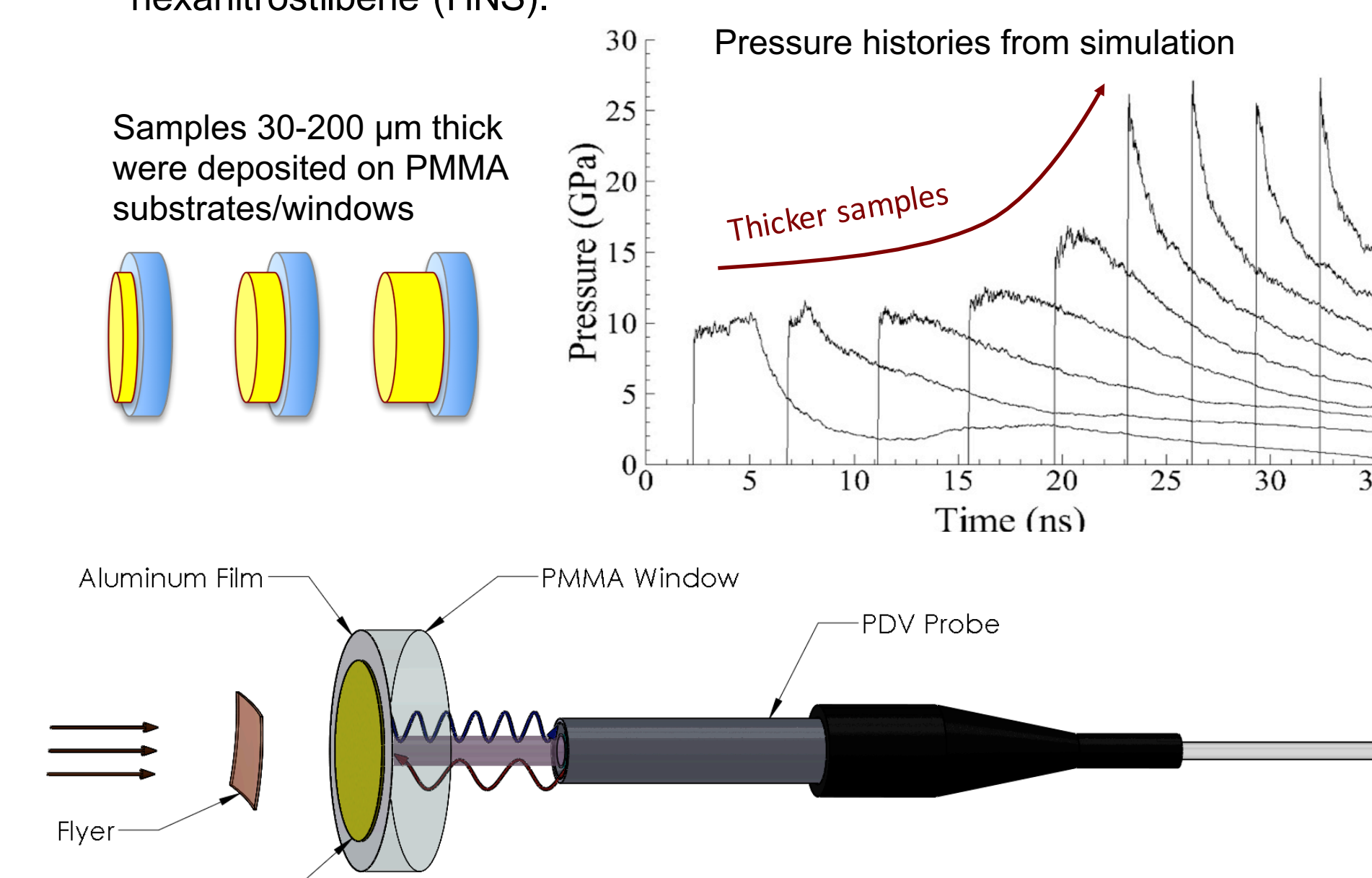
- Build-up to detonation in detonator materials occurs on extremely short temporal and spatial scales.
- More established diagnostics for characterizing build-up to detonation are untenable.
- Hydrodynamic simulations provide insight, but need to be validated.

- Build-up to detonation in detonator materials occurs on extremely short temporal and spatial scales.
- More established diagnostics for characterizing build-up to detonation are untenable.
- Hydrodynamic simulations provide insight, but need to be validated.



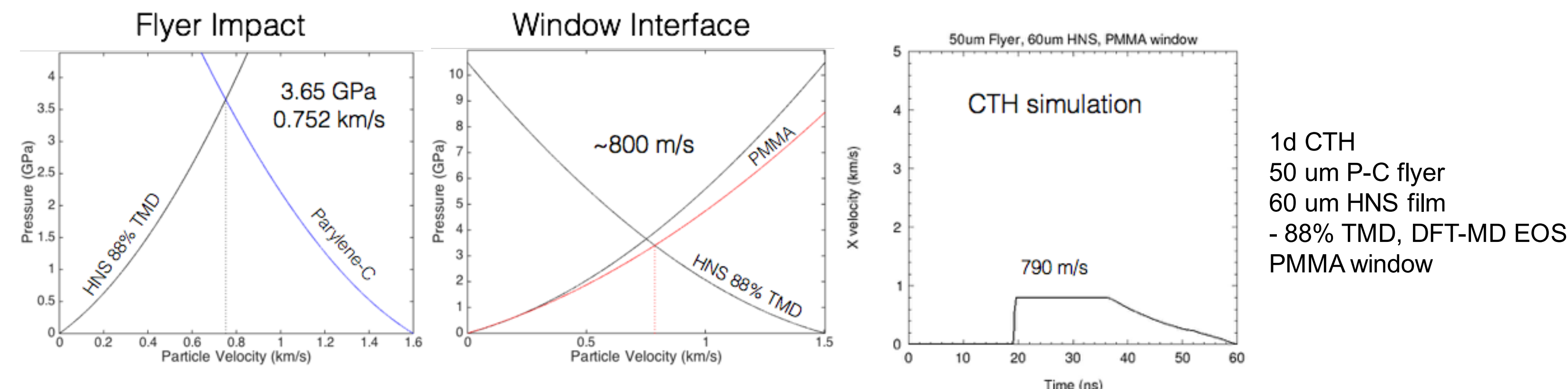
Photonic Doppler velocimetry (PDV) and novel samples have made it possible to do a series of 'thin-film cutback' experiments. The data will be used to validate/calibrate hydrocode simulations and advance our understanding of how an inert shock builds to detonation in materials like hexanitrostilbene (HNS).

Photonic Doppler velocimetry (PDV) and novel samples have made it possible to do a series of 'thin-film cutback' experiments. The data will be used to validate/calibrate hydrocode simulations and advance our understanding of how an inert shock builds to detonation in materials like hexanitrostilbene (HNS).



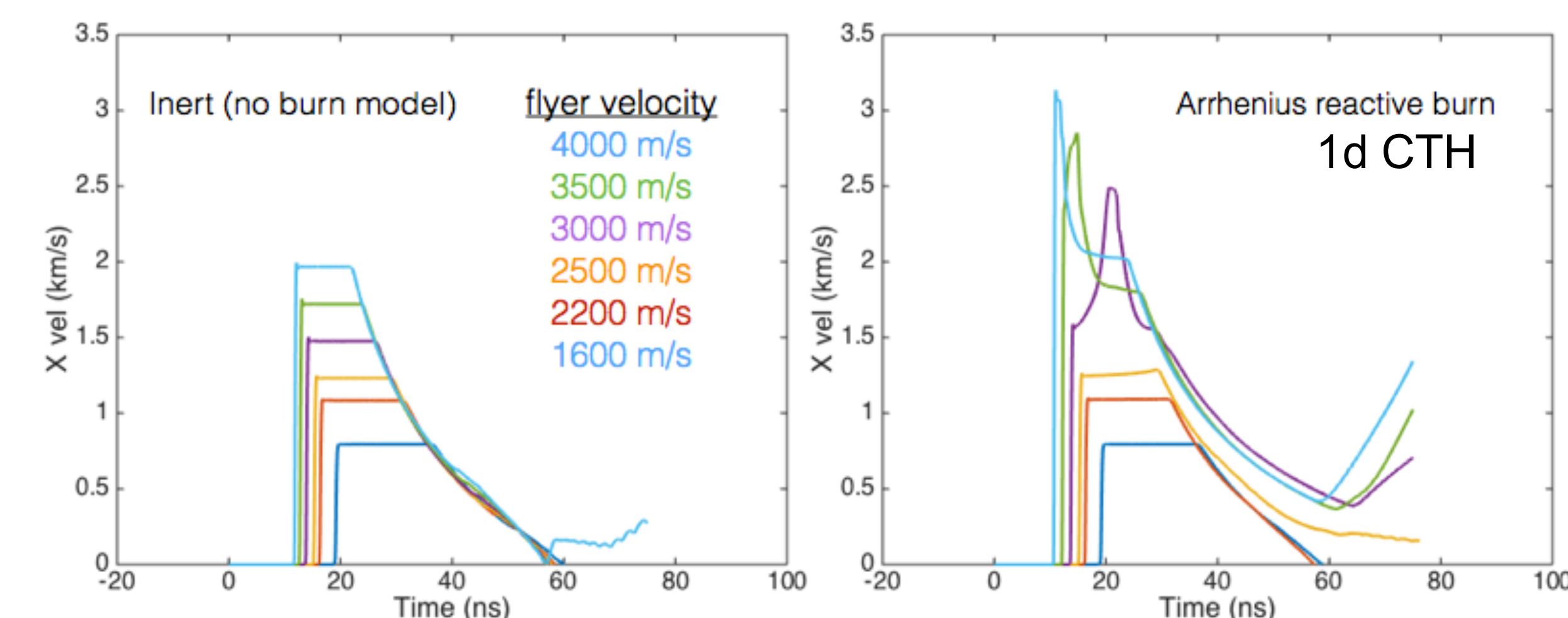
- Simple impedance matching can predict the shock pressure imparted by the flyer and the transfer of an inert shock across the HNS/PMMA interface.
- A 1d CTH simulation predicts the same magnitude for the observed shock pulse in the window.

- Simple impedance matching can predict the shock pressure imparted by the flyer and the transfer of an inert shock across the HNS/PMMA interface.
- A 1d CTH simulation predicts the same magnitude for the observed shock pulse in the window.



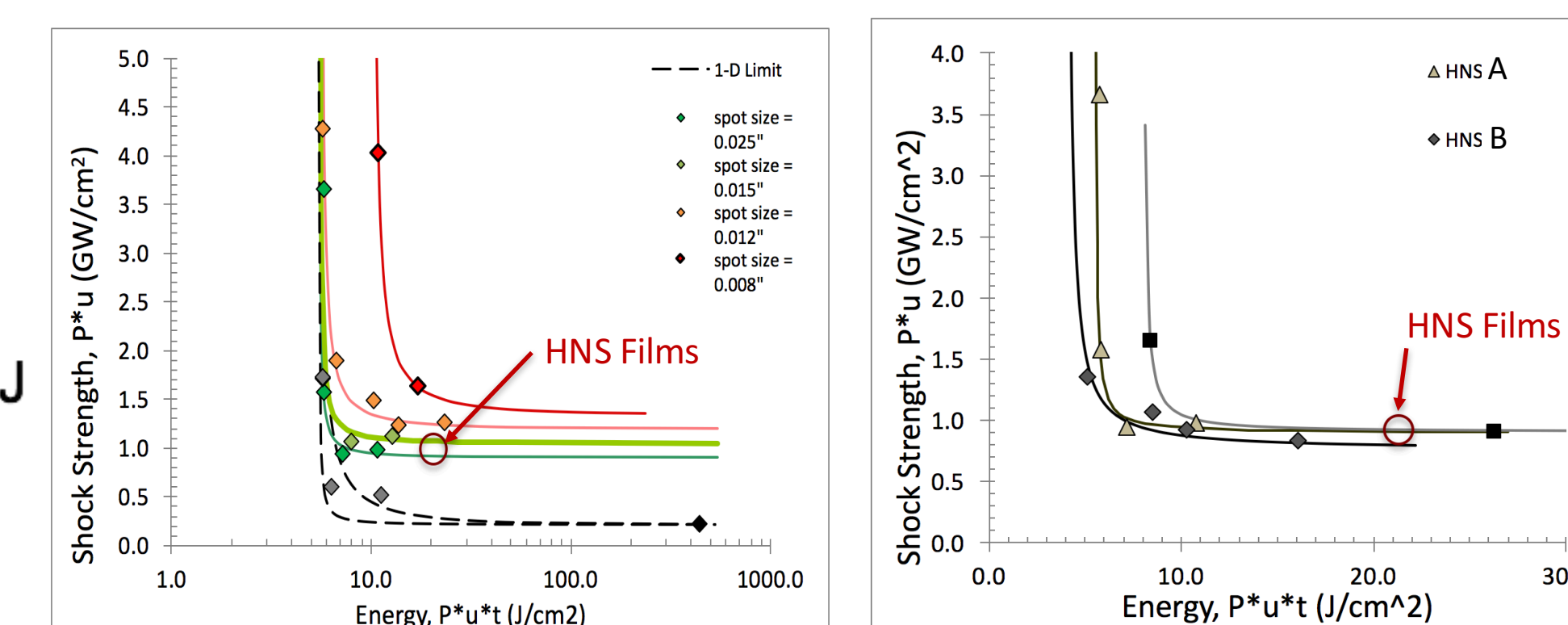
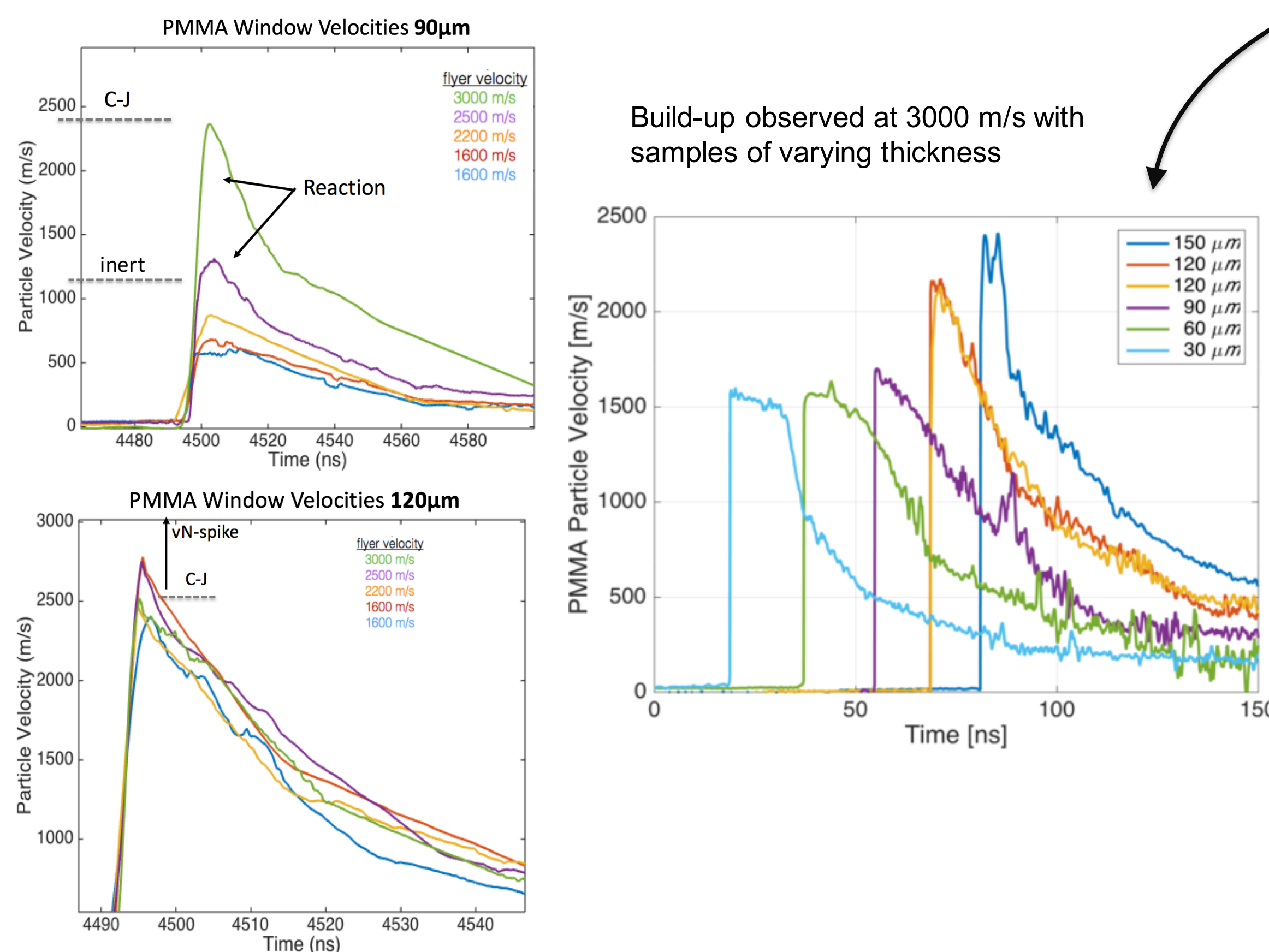
- CTH simulations with and without a chemistry model help determine when the shock is inert or reacting.
- Observed particle velocities greater than the predicted inert response are an indication of shock-induced chemical reaction

- CTH simulations with and without a chemistry model help determine when the shock is inert or reacting.
- Observed particle velocities greater than the predicted inert response are an indication of shock-induced chemical reaction



The measured particle velocity histories show clear indication of inert, reacting, and fully detonating waves depending on impact velocity or thickness of sample. Using five different thickness of HNS and a single flyer velocity (3 km/s) provides a view of build-up to detonation that can be directly compared to simulations results.

The measured particle velocity histories show clear indication of inert, reacting, and fully detonating waves depending on impact velocity or thickness of sample. Using five different thickness of HNS and a single flyer velocity (3 km/s) provides a view of build-up to detonation that can be directly compared to simulations results.



Novel samples and advances in PDV have enabled observation of the build-up to detonation in HNS. This data has validated a previous prediction of the unreacted Hugoniot of HNS and will be used to calibrate a reactive-burn model.

Novel samples and advances in PDV have enabled observation of the build-up to detonation in HNS. This data has validated a previous prediction of the unreacted Hugoniot of HNS and will be used to calibrate a reactive-burn model.

**Acknowledgments:** The authors sincerely thank Pat Ball, Barry Ritchey, and David Kittell for assisting with aspects of this work.

SAND2016-5161 C

