

LA-UR-17-25161

Approved for public release; distribution is unlimited.

Title: Performance Testing of Tracer Gas and Tracer Aerosol Detectors for use
in Radionuclide NESHAP Compliance Testing

Author(s): Fuehne, David Patrick
Lattin, Rebecca Renee

Intended for: Report
Environmental Programs

Issued: 2017-06-28

Disclaimer:

Los Alamos National Laboratory, an affirmative action/equal opportunity employer, is operated by the Los Alamos National Security, LLC for the National Nuclear Security Administration of the U.S. Department of Energy under contract DE-AC52-06NA25396. By approving this article, the publisher recognizes that the U.S. Government retains nonexclusive, royalty-free license to publish or reproduce the published form of this contribution, or to allow others to do so, for U.S. Government purposes. Los Alamos National Laboratory requests that the publisher identify this article as work performed under the auspices of the U.S. Department of Energy. Los Alamos National Laboratory strongly supports academic freedom and a researcher's right to publish; as an institution, however, the Laboratory does not endorse the viewpoint of a publication or guarantee its technical correctness.

Performance Testing of Tracer Gas and Tracer Aerosol Detectors for use in Radionuclide NESHAP Compliance Testing

BACKGROUND

The Rad-NESHAP¹ program, part of the Air Quality Compliance team of LANL's Compliance Programs group (EPC-CP), and the Radiation Instrumentation & Calibration team, part of the Radiation Protection Services group (RP-SVS), frequently partner on issues relating to characterizing air flow streams. This memo documents the most recent example of this partnership, involving performance testing of sulfur hexafluoride detectors for use in stack gas mixing tests. Additionally, members of the Rad-NESHAP program performed a functional trending test on a pair of optical particle counters, comparing results from a non-calibrated instrument to a calibrated instrument.

Prior to commissioning a new stack sampling system, the ANSI Standard² for stack sampling requires that the stack sample location must meet several criteria, including uniformity of tracer gas and aerosol mixing in the air stream. For these mix tests, tracer media (sulfur hexafluoride gas or liquid oil aerosol particles) are injected into the stack air stream and the resulting air concentrations are measured across the plane of the stack at the proposed sampling location. The coefficient of variation of these media concentrations must be under 20% when evaluated over the central 2/3 area of the stack or duct. The instruments which measure these air concentrations must be tested prior to the stack tests in order to ensure their linear response to varying air concentrations of either tracer gas or tracer aerosol.

The instruments used in tracer gas and aerosol mix testing cannot be calibrated by the LANL Standards and Calibration Laboratory, so they would normally be sent off-site for factory calibration by the vendor. Operational requirements can prevent formal factory calibration of some instruments after they have been used in hazardous settings, e.g., within a radiological facility with potential airborne contamination. The performance tests described in this document are intended to demonstrate the reliable performance of the test instruments for the specific tests used in stack flow characterization.

METHODS

Sulfur Hexafluoride Detector Tests

Sulfur hexafluoride (SF₆) is used as the tracer gas to evaluate uniformity in gas mixing within the stack. The instrument of choice for this type of measurement is the InfraRan

¹ Rad-NESHAP or Radionuclide NESHAP refers to Title 40 of the Code of Federal Regulations, Part 61, Subpart H, "National Emission Standards for Emissions of Radionuclides Other Than Radon From Department Of Energy Facilities." Compliance with this program at Los Alamos National Laboratory is part of the "Environmental Compliance Programs" group, EPC-CP.

² American National Standards Institute ANSI N13.1-1999, "Sampling and Monitoring Releases of Airborne Radioactive Substances from the Stacks and Ducts of Nuclear Facilities." Incorporated by reference into 40 CFR 61, Subpart H, above.

gas analyzer, by Wilkes Instruments. This instrument's ideal range is 0-3 parts per million (ppm), with a calibrated range up to 5 ppm. The instrument is portable, has a fast response, and can log data for later off-line evaluation. While an absolute calibration is not needed, the unit must accurately measure variations in SF₆ concentration in order to evaluate gas mixing across the stack profile. A linear response between air concentration and instrument response is desired to allow easy comparison between measurements points.

To evaluate the detector responses, team personnel injected known amounts of SF₆ into the RP-SVS isolation chamber, with the gas analyzers continuously measuring SF₆ concentration. EPC-CP evaluated their two SF₆ detectors while RP-SVS evaluated their individual instrument. The instruments were zeroed prior to start of the testing.

We performed two separate tests on May 30, 2017. The first test measured the relative response rate to a series of small injections using about 5 mL of SF₆ per injection. Before beginning the injections, the isolation chamber was sealed so that the only points of air movement were from the injection port and the measurement port. An initial injection of 12 mL brought the concentration up to a measurable range. Then, at two minute intervals, 5 mL of SF₆ were injected into the isolation chamber until the detectors alarmed (approximately 30 minutes total) at a concentration of 5 ppm. The doors to the isolation chamber were then opened to vent the SF₆ out of the chamber.

The second test measured the relative response rate to a series of three large injections: 25 mL, 20 mL, and 20 mL respectively. Again, we sealed the isolation chamber to minimize air movement. With the chamber background SF₆ concentration down to near-zero, we injected SF₆, waited for the concentration to stabilize, and repeated the process for a total of 3 injections. We then opened the isolation chamber to again drop the SF₆ concentration to low levels.

We entered all data into an Excel spreadsheet and used the built-in trendline functions to evaluate the detector response factor for each detector. Complete results from both tests appear in Attachment 1.

It should be noted that the InfraRan instrument reads out in parts per million (PPM), but this value is not corrected for ambient air pressure or temperature. This corresponds to the Permissible Exposure Limits (PEL) established by the Occupational Safety and Health Administration (OSHA), which are "fixed and not subject to corrections for temperature and pressure." [NIOSH Manual for Analytical Methods, Appendix B]. The InfraRan effectively measures the number of molecules of the gas of interest, then converts that to a ppm value assuming on standard temperature and pressure conditions. [Electronic communication with Wilkes Instruments personnel, Nov 5 2008.]

Aerosol Detector Tests

The aerosol detector testing is more complicated, since one cannot inject controlled amounts of 10-micron particles into an isolation chamber. Instead, a calibrated instrument must be used to evaluate the response of the field unit used in radiological

facility testing. The non-calibrated field unit and the calibrated unit are set up with nearly identical extraction systems and collocated in the air stream at the EPC Division test duct at TA-35-0034. Using an air compressor and fuel oil nozzle, a liquid oil aerosol is generated from vegetable oil and injected into the duct. Varying aerosol concentrations are obtained by varying the wind tunnel duct fan speed. One can also adjust aerosol concentrations by varying compressor pressures or injector nozzle orientation, but the fan speed is the easiest to control and easiest method to achieve dramatically different aerosol concentration results.

The instruments used for measuring particulates in this situation are AeroTrak portable particle counters by TSI Inc. These instruments can measure particles from 0.3 μm in size up to 25 μm in size. EPC-CP uses the 5 μm and the 10 μm bins for measurements as these are the typical particle size seen in stack sampling. These detectors have a quick response, are portable, and can log data as needed. An absolute calibration is not needed to evaluate particulate mixing within a stack, just a relative comparison between points. Therefore, the trends of the non-calibrated detector was compared to the trends of the calibrated detector within the same air stream to ensure that the non-calibrated unit accurately measures the variability of concentration of particulates.

The AeroTrak instruments were set up to take one minute counts of particulates in the air stream when the “count” button was pushed. Prior to testing, the instruments were operated with a HEPA filter in place to verify zero. Background measurements were then taken to determine the baseline in the duct air stream. Next, vegetable oil aerosol was generated and injected into the wind tunnel duct. The fan speed was varied in order to vary the concentration of oil particles reaching the detectors.

On June 9, 2017, EPC-CP took a series of measurements at varying fan speeds, especially since the amount of aerosol in the air stream could not be varied. Both instruments were zeroed twice. Then three background measurements were taken with the extraction hoses looped down followed by three background measurements taken with the hoses tied up to reduce particle loss. With the aerosol entering the air stream, four measurements were taken at each of four different fan speeds: 50%, 70%, 35%, and 60%. Finally, two background measurements were taken with the aerosol removed from the air stream.

All data collected from the tests were entered into an Excel spreadsheet to graph the trends of both detectors. The ratio of the field instrument counts to the calibrated instrument counts was calculated at each point; the coefficient of variance (COV) was determined for this ratio. Complete results from these tests can be found in Attachment 2.

EQUIPMENT

Sulfur Hexafluoride Detector Tests

- Wilks InfraRan Specific Vapor Analyzer, calibrated to sulfur hexafluoride
 - Model # 405-2000-1017; Serial Number 147; LANL Property # 1114591 referred to as “Detector 91”

- Model # 405-2000-1017; Serial Number 148; LANL Property # 1114592 referred to as “Detector 92”
- Commercial grade sulfur hexafluoride
- Graduated syringe, 0-60 mL
- Various transfer tubing
- RP-SVS Isolation chamber in building TA-3-0130
 - L-Shaped chamber
 - Long section is 4 ft W x 8 ft L x 8 ft H (256 ft³)
 - Short section 4x4x8 (128 ft³)
 - Three access doors: one at each end, plus one connecting the two chambers
 - Each door well is approximately 4 inches D x 3 ft W x 7 ft H = 7 ft³.
 - Total chamber volume is about 405 ft³ = 11.46 m³.
 - Volume of chamber contents is disregarded; very small relative to chamber.
 - Chamber is equipped with a small air circulation fan to prevent settling of gas and promote mixing within the chamber.
 - Chamber is also equipped with an exhaust fan, which can be sealed off when not in use.

Aerosol Detector Tests

- TSI AeroTrak Portable Particle Counter
 - Model # APC 9310-01N; Serial Number 93100936002; referred to as “Detector 02;”
LANL Property # 1212264;
Factory calibrated in July 2016; expires 7/26/2017.
 - Model # APC 9310-01N; Serial Number 93100936003;
Referred to as “Detector 03”
LANL Property # 1212265 (non-calibrated)
- DeWalt D55168 Air Compressor (200 psi)
- Vegetable oil
- Various transfer tubing
- EPC-CP Wind tunnel in building TA-35-0034
 - 32.3 ft long x 12.4 in diameter
 - Length between the injection port and measurement port is about 18.7 ft
 - Graham Company 2001 Series Frequency Drive pulls air from intake towards output (injection port towards measurement port)
 - 35% fan speed = 0.10 velocity pressure (in. H₂O)
 - 50% = 0.21
 - 60% = 0.31
 - 70% = 0.43
 - Length between the injection port and the air intake is about 17.5 in

EVALUATION TEAM

Sulfur Hexafluoride Detector Tests

Murray Moore, RP-SVS
David Fuehne, EPC-CP
Rebecca Lattin, EPC-CP
Yong Tao, RP-SVS

Aerosol Detector Tests

David Fuehne, EPC-CP
Rebecca Lattin, EPC-CP

DATA

Sulfur Hexafluoride Detector Tests

The complete data logs from both tests for both EPC-CP instruments appear in Attachment 3. We were able to successfully log and download data from the instruments directly, so the hard copy data records were used as timing references for injections and were transcribed into the Excel spreadsheet. Unfortunately, data from the RP-SVS instrument could not be downloaded. Therefore, the only data available for this machine were from the hand-written records. The data from the RP-SVS machine were shared with RP-SVS team members but are not included in Attachment 3. However, data plots are included in Attachment 1 for each test and each EPC-CP detector. The plots and data are broken up by detector and then by test. Data entry was verified by an independent person.

Figure 1A and Figure 2A show the overall data log relative to time for the duration of both tests. Detector 91 is shown in Figure 1A while detector 92 is shown in Figure 2A. These figures illustrate the general detector response after injections of SF₆. These figures use raw data from the detector, saved at 5-second intervals; the concentration increase after injections and slow decay can be seen in these plots. The next two pairs of plots (1B/2B and 1C/2C) also use raw detector data.

For Test 1, all of the measured data points per detector were graphed versus the injected amount of SF₆ in the isolation chamber (Figure 1B & Figure 2B). These figures make use of Excel's trend-fitting capabilities to determine the best-fit line and the "Adjusted R Square" (R²) value for each detector's data.

For Test 2, as done for Test 1, all of the measured concentrations per detector were graphed versus the amount of SF₆ injected into the isolation chamber (Figure 1C & Figure 2C) based on the three large injections. These figures make use of Excel's trend-fitting capabilities to determine the best-fit line and the R² value for each detector's data as well.

A summary of both detectors for both tests are shown on the second to last page of Attachment 1. The summary for each detector (Figure 1D & Figure 2D) is based on the

injected amount and the mode detector reading for the duration of the injected amount (from the time of injection to the time before the next injection). The mode of the reading corresponds to what a user would view as a “stable” value after each injection. Figure 3 is an overall summary of Figure 1D and Figure 2D to visually compare the trends of both detectors together. As can be seen in Figure 3, the associated R^2 value, indicating quality of fit, exceeds 99% for both tests for both detectors.

Aerosol Detector Tests

Attachment 2 shows the hand-logged data for both aerosol detectors that were entered into an Excel spreadsheet. Both AeroTrak detectors measure 5 μm and 10 μm particles simultaneously. Since we were looking to see if our non-calibrated unit (Detector 03) trends with our calibrated unit (Detector 02), we recorded and analyzed the data for the two particle sizes separately. Data entry was verified by an independent person. Attachment 2 also shows the graphs of the data (Figures 4 and 5) to show the detectors' trends as the fan speeds, and thus aerosol concentrations, changed.

For each bin (5 μm and 10 μm), the average ratio between detector 02 and detector 03 measurements was calculated as well as the standard deviation and the coefficient of variance. Page one of Attachment 2 shows the data and the calculated average ratio, standard deviation, and COV. Figure 4 shows how each detector trended during the tests over time for the 5 μm bin. Figure 5 shows the same information except for the 10 μm bin. Important changes made during measurements are also marked on Figures 4 and 5.

RESULTS & CONCLUSIONS

Calculations and graphs for the sulfur hexafluoride tests are in Attachment 1. The same information as well as the full data logs for the aerosol tests are shown in Attachment 2. Attachment 3 contains the full data logs for the sulfur hexafluoride tests.

Sulfur Hexafluoride Detector Tests

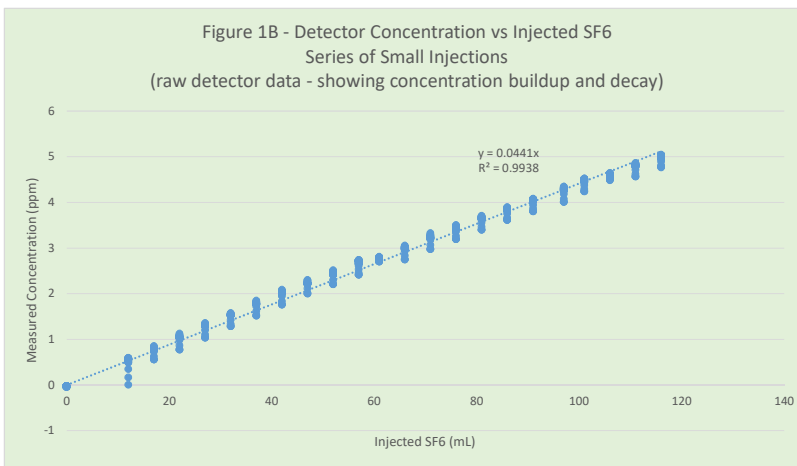
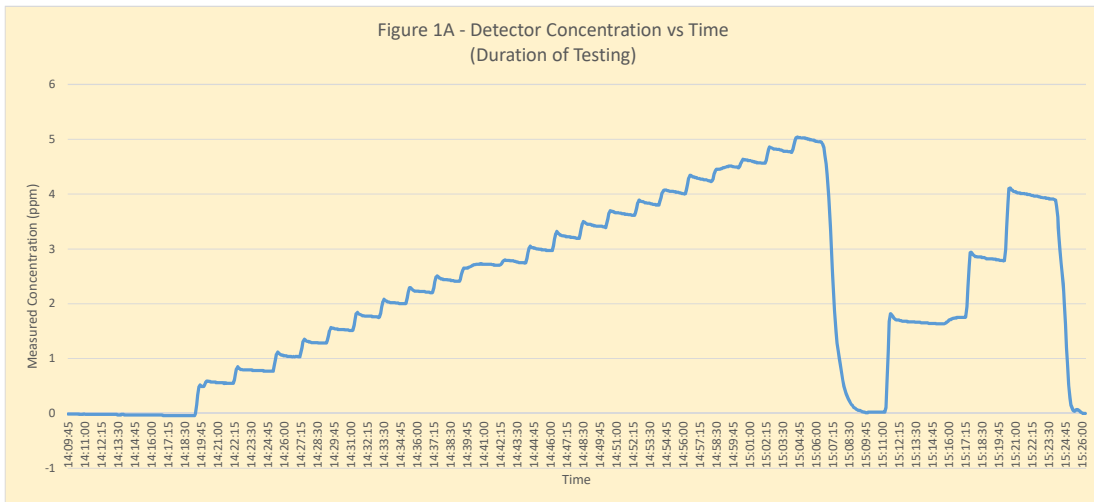
Data for each detector and each test are shown in the figures as indicated. Each detector independently showed a linear response at greater than 99% confidence; the adjusted R-square of each linear-fit trendline exceeded 0.99. It is interesting that the series of small injections had a lower slope than the large injections. The suspected cause of this is that one door of the isolation chamber may not have been completely sealed. After the chamber was vented after the small injection series, it was noted that the back door of the chamber was hard to completely close. Unless special care was taken to fully shut the door, it would partially re-open. Venting through a partially opened door would prevent reaching the anticipated levels of SF₆ after each injection, and also cause decay of the reading. After the door was more completely sealed before the large injections, the slope of detector response returned to the anticipated levels measured in the 2008 series of testing. Regardless, each detector and each test showed a linear response to varying levels of sulfur hexafluoride and all detectors are suitable for sample site testing to meet Rad-NESHAP compliance.

Aerosol Detector Tests

Visible inspection of Figures 4 and 5 show that the two detectors trend together; the field unit trends similarly to the calibrated unit. Quantitatively, the ratio between the readings at different concentrations are quite close; the 5-micron bin ratio showed about a 2% COV, while the 10-micron bin showed a less than 10% COV. The COV for readings is based on times when aerosol injections were taking place, as opposed to using ambient background counts. Also, it is expected that the 10-micron bin would vary more widely, since larger diameter particles are more subject to losses due to extraction system design and flow rate variability. A COV of less than 10% indicates that the field detector varies similarly to the factory-calibrated unit, and the field unit is therefore suitable for the sample site testing to meet Rad-NESHAP compliance.

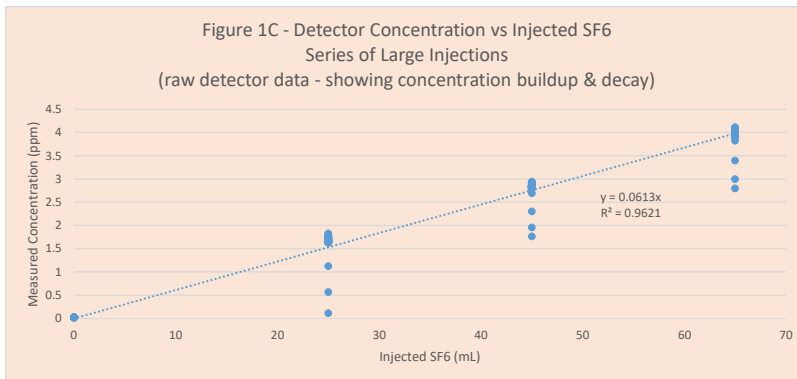
Attachment 1

Sulfur Hexafluoride Detector Tests - Calculations & Graphs



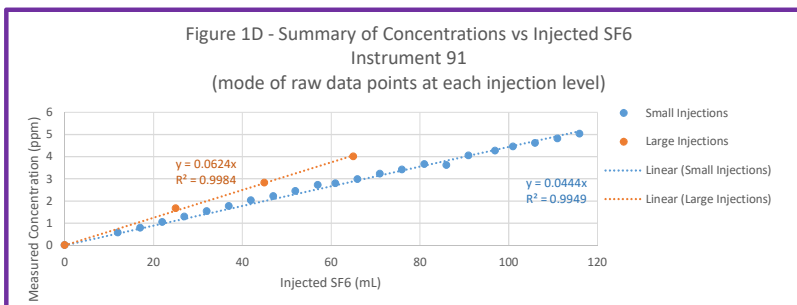
Summary of Small Injections

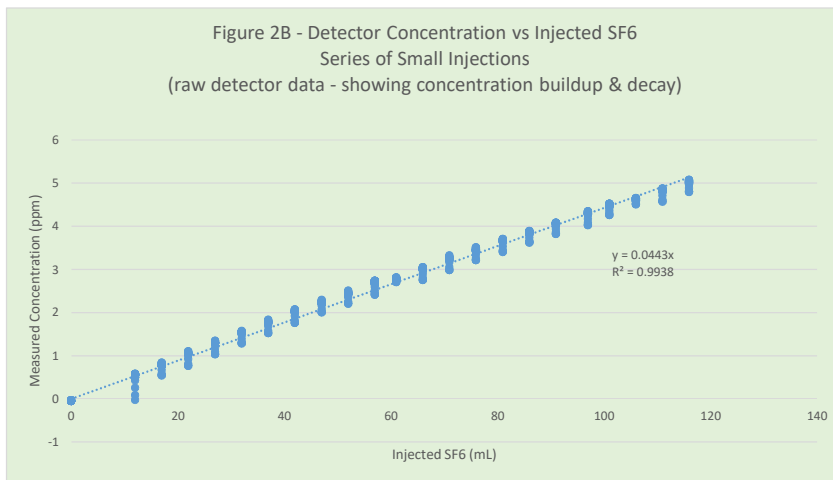
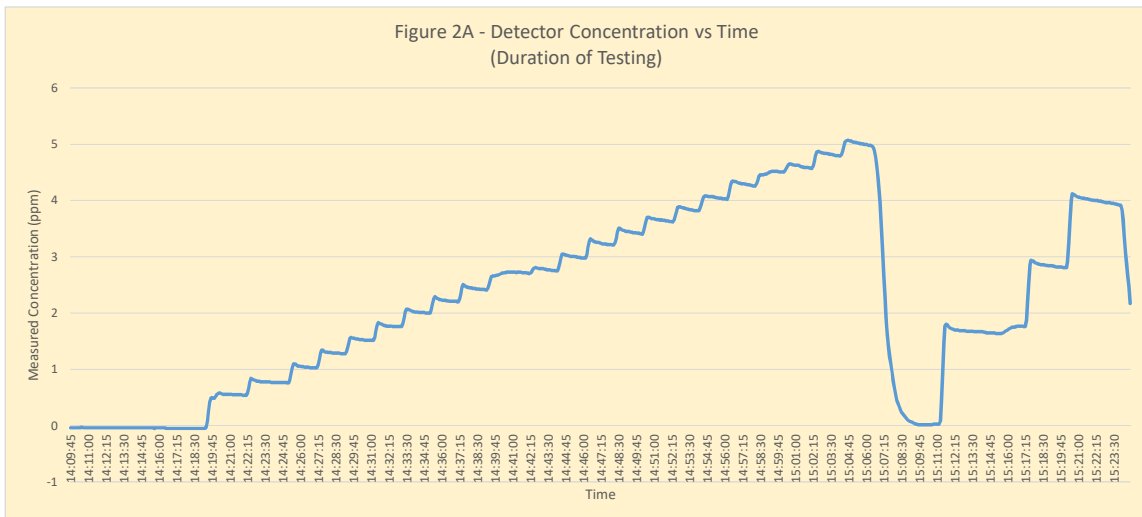
Injected	Reading
0	0
12	0.56
17	0.78
22	1.04
27	1.29
32	1.53
37	1.77
42	2.02
47	2.22
52	2.44
57	2.72
61	2.79
66	2.98
71	3.22
76	3.41
81	3.66
86	3.61
91	4.05
97	4.27
101	4.45
106	4.61
111	4.81
116	5.03



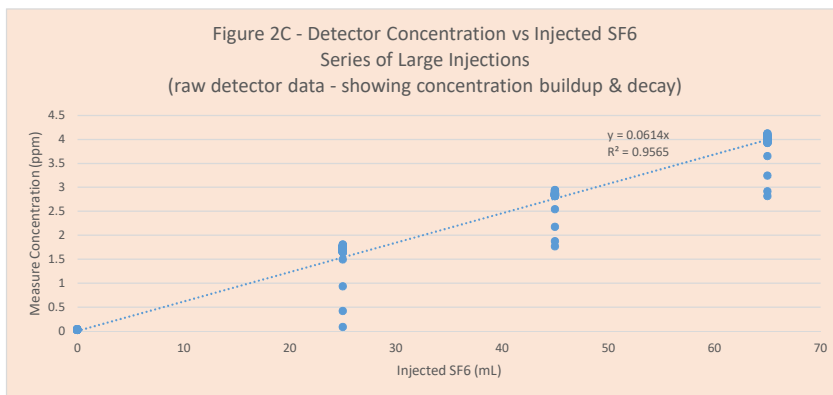
Summary of Large Injections

Injected	Reading
0	0
25	1.67
45	2.82
65	4.01

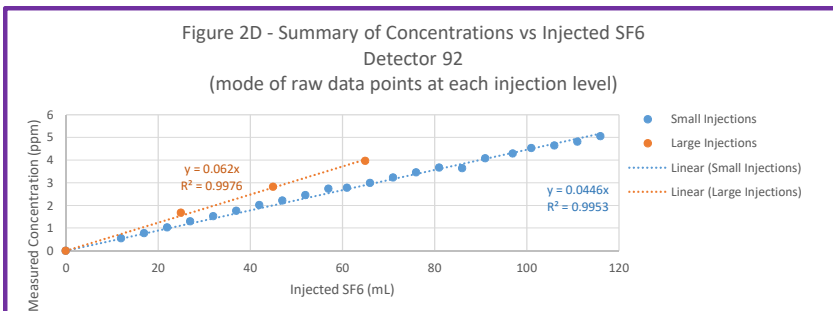


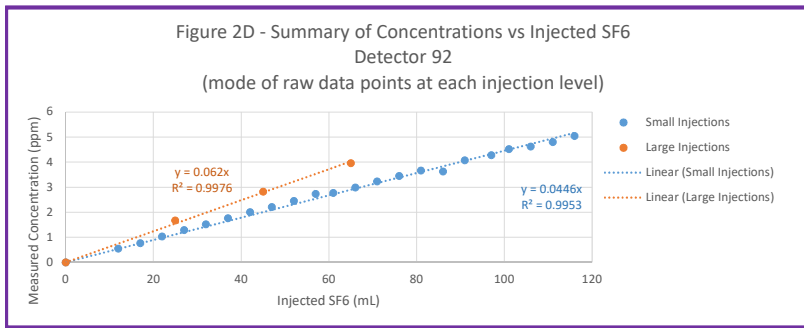
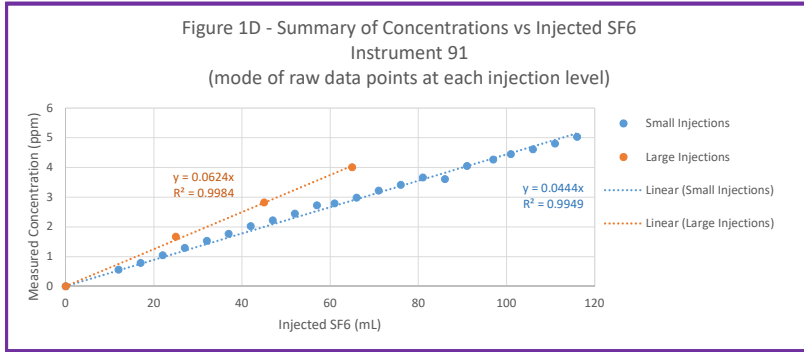


Summary of Small Injections	
Injected	Reading
0	0
12	0.55
17	0.77
22	1.03
27	1.29
32	1.52
37	1.76
42	2.01
47	2.21
52	2.45
57	2.73
61	2.77
66	2.99
71	3.23
76	3.45
81	3.66
86	3.63
91	4.07
97	4.28
101	4.52
106	4.63
111	4.8
116	5.04



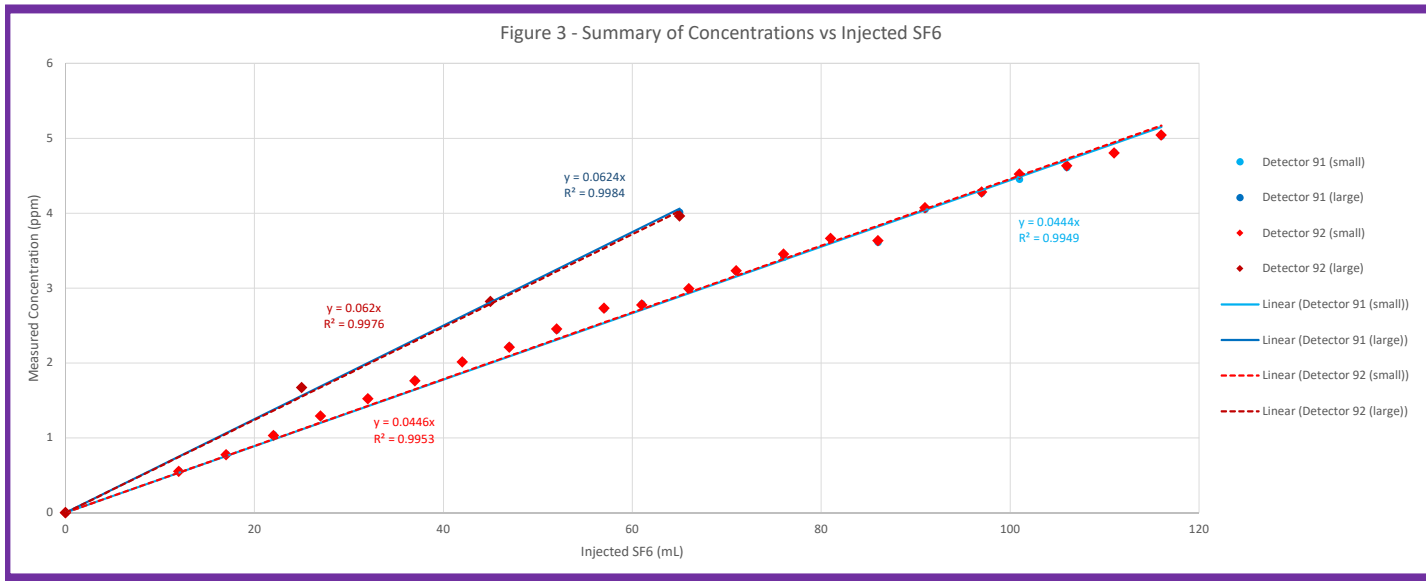
Summary of Large Injections	
Injected	Reading
0	0
25	1.67
45	2.82
65	3.96





Detector 91	
Summary of Small Injections	
Injected	Reading
0	0
12	0.56
17	0.78
22	1.04
27	1.29
32	1.53
37	1.77
42	2.02
47	2.22
52	2.44
57	2.72
61	2.79
66	2.98
71	3.22
76	3.41
81	3.66
86	3.61
91	4.05
97	4.27
101	4.45
106	4.61
111	4.81
116	5.03
Summary of Large Injections	
Injected	Reading
0	0
25	1.67
45	2.82
65	4.01

Detector 92	
Summary of Small Injections	
Injected	Reading
0	0
12	0.55
17	0.77
22	1.03
27	1.29
32	1.52
37	1.76
42	2.01
47	2.21
52	2.45
57	2.73
61	2.77
66	2.99
71	3.23
76	3.45
81	3.66
86	3.63
91	4.07
97	4.28
101	4.52
106	4.63
111	4.8
116	5.04
Summary of Large Injections	
Injected	Reading
0	0
25	1.67
45	2.82
65	3.96



Attachment 1 - Calculations

PREDICTING SULFUR HEXAFLUORIDE DETECTOR RESPONSE Test Date: 30-May-17

Sulfur hexafluoride data

Molecular Weight 146.05 grams per mole
 Molar volume (ideal gas) 24.45 liters per mole at 25 C, 1 atm
 air concentration ratio 5.97 milligrams per cubic meter = 1 part per million @ STP
 InfraRan detector reads out in STP!
 It measures number of SF6 molecules; assumes standard pressure & temp

Environmental Conditions

Standard Air Temp 25 deg C or 298.15 Kelvin
 Ambient Air Temperature 20 deg C or 293.15 Kelvin
 Standard Air Pressure 1 atm
 Ambient Air Pressure 0.77 atm

Using the ideal gas law, simplified for comparing two conditions: $P_1 \cdot V_1 / T_1 = P_2 \cdot V_2 / T_2$

Reorganize & solve for ambient (amb) volume as function of standard (std) vol * conversion ratios

$$V_{\text{ambient}} = V_{\text{standard}} \cdot (T_{\text{amb}} / T_{\text{std}}) \cdot (P_{\text{std}} / P_{\text{amb}})$$

temp ratio, amb to std 0.983

pressure ratio, std to amb 1.299

Net volume conversion factor: Volume (ambient) = 1.277 * Volume (standard)

Molar volume of ideal gas = 31.22 liters per mol at Los Alamos ambient conditions

RP-2 Aerosol Lab - Isolation Chamber

L-shaped chamber

Long side = 8 feet L x 4 feet W x 8 feet H = 256 ft³

Short side = 4 feet L x 4 feet W x 8 feet H = 128 ft³

Door well dimensions = 3 ft W x 7 ft H x 4 inch Deep = 7 ft³

number of doors 3 doors; 2 at each end of "L" and one between long & short sides

Total chamber volume = 405 ft³ or 11.47 m³

Air concentration determination

volume of SF6 injected 1 mL into isolation chamber = 0.001 L injected

moles injected = 3.20E-05 moles

mass injected = 4.68E-03 grams

concentration in chamber = 4.08E-04 grams per m³

0.408 milligrams per m³

predicted concentration = 0.0683 ppm reported on InfraRan instrument (reads out in standard ppm)

Comparing this prediction with actual measurements:

Isolation Chamber Test Data 30-May-17

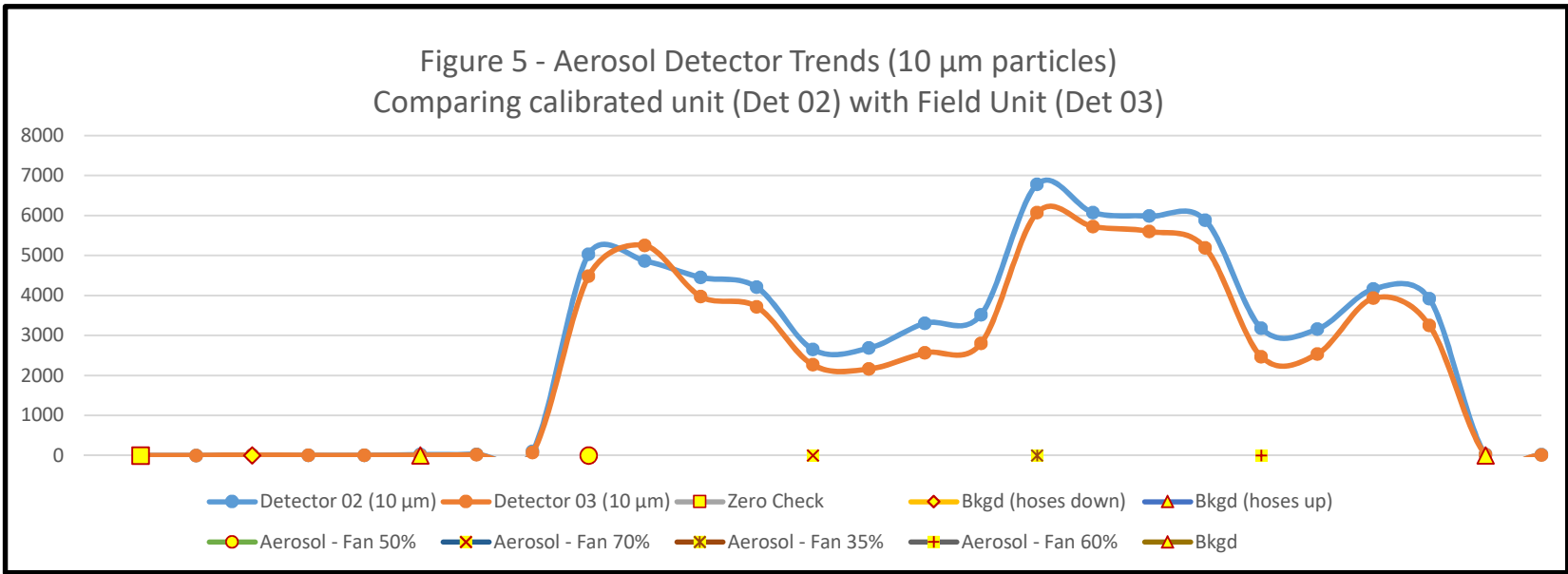
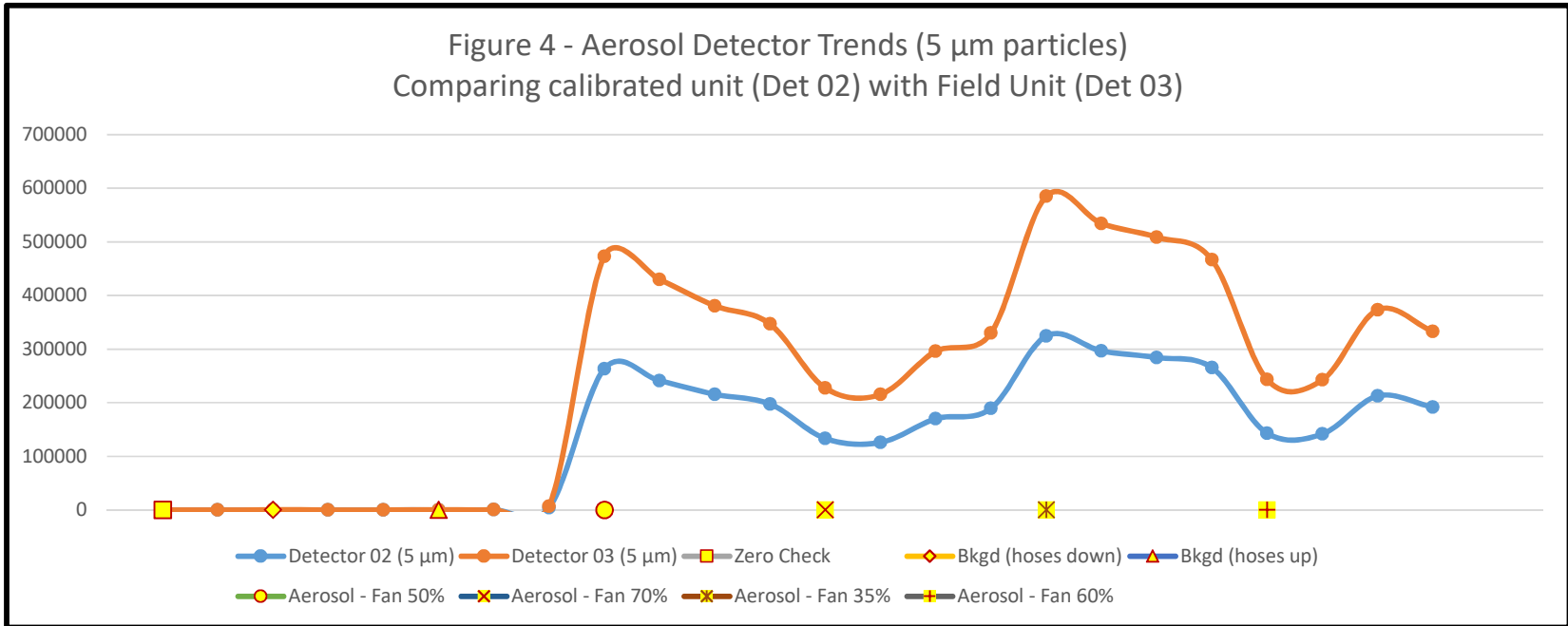
		<i>Difference vs predicted concentration</i>
Test 1 (small injections)	0.0446 ppm per mL (trendline result)	34.7%
Test 2 (large injections)	0.062 ppm per mL (trendline result)	9.3%

Note - linear regression calculation gives same result as Excel trendline!

While the large injection tests came closer to the predicted value, differences could be to incomplete sealing of the isolation chamber during the small injection series. Regardless, the detectors show similar readings and a linear response, so both EPC detectors are suitable for Rad-NESHAP sample site testing.

Attachment 2

Aerosol Particle Counter Tests - Data, Calculations, & Graphs



Functional Test of aerosol particle counter		Five Micron Size Bin		Ten Micron Size Bin	
Detector 02 - calibrated unit	Goal: show Detector 3 (field unit, non-calibrated) varies similarly to the calibrated unit Detector 2. <i>Det3 cannot be calibrated after use in rad area</i> <i>Stack tests measure variability of aerosol across cross-section of duct.</i>	1.753	Average Ratio of (Det2/Det3)	0.874	
Detector 03 - Field Work unit		0.04	Std Dev of Ratio, (Det2/Det3)	0.08	
		2.0%	Coef. of Variation (StdDev/avg)	9.0%	

Particle counts in one-minute interval; looking @ 5 micron and 10 micron bins.

Status	Aerosol Source?	Plot Point	Detector 02 (5 µm)	Detector 03 (5 µm)	Ratio, Field/Cal	Detector 02 (10 µm)	Detector 03 (10 µm)	Ratio, Field/Cal
Zero Check 1	zero-filter	1	0	0		0	0	
Zero Check 2	zero-filter	2	0	0		0	0	
Background 1 (hoses down)	bkgd	3	262	506	1.931	13	13	1.000
Background Measurement 2	bkgd	4	122	286	2.344	4	8	2.000
Background Measurement 3	bkgd	5	66	236	3.576	3	2	0.667
Background 4 (hoses up)	bkgd	6	277	437	1.578	26	7	0.269
Background Measurement 5	bkgd	7	546	737	1.350	30	21	0.700
Background Measurement 6	bkgd/oil	8	3945	6830	1.731	100	71	0.710
Fan at 50% Measurement 1	oil inject	9	263034	473088	1.799	5034	4485	0.891
Fan at 50% Measurement 2	oil inject	10	241283	429786	1.781	4867	5251	1.079
Fan at 50% Measurement 3	oil inject	11	215722	380739	1.765	4456	3976	0.892
Fan at 50% Measurement 4	oil inject	12	197523	346903	1.756	4210	3718	0.883
Fan at 70% Measurement 1	oil inject	13	133523	227510	1.704	2653	2267	0.855
Fan at 70% Measurement 2	oil inject	14	125941	215432	1.711	2686	2163	0.805
Fan at 70% Measurement 3	oil inject	15	170015	295942	1.741	3308	2569	0.777
Fan at 70% Measurement 4	oil inject	16	189360	329780	1.742	3519	2804	0.797
Fan at 35% Measurement 1	oil inject	17	324423	584808	1.803	6781	6070	0.895
Fan at 35% Measurement 2	oil inject	18	296692	534322	1.801	6074	5725	0.943
Fan at 35% Measurement 3	oil inject	19	284270	508662	1.789	5987	5603	0.936
Fan at 35% Measurement 4	oil inject	20	265406	466747	1.759	5884	5192	0.882
Fan at 60% Measurement 1	oil inject	21	143244	243270	1.698	3180	2470	0.777
Fan at 60% Measurement 2	oil inject	22	141734	242531	1.711	3161	2540	0.804
Fan at 60% Measurement 3	oil inject	23	212575	373253	1.756	4161	3933	0.945
Fan at 60% Measurement 4	oil inject	24	191608	332993	1.738	3918	3253	0.830
Background Measurement 1	bkgd	25				26	21	
Background Measurement 2	bkgd	26				17	11	
Zero Check - multiple runs to clear machines	zero-filter	27+	0	0		0	0	

Attachment 3

Sulfur Hexafluoride Detector Tests – Full Data Logs

LOG RUN STATISTICS

START: 30-May-17 14:01:12
 STOP: 30-May-17 15:26:15

SF6

	<u>CONCENTRATION</u>	<u>DATE</u>	<u>TIME</u>	<u>VALIDITY</u>
MAXIMUM:	5.04 ppm	30-May-17	15:04:35	RANGE+HIGH+LOW
MINIMUM:	-0.04 ppm	30-May-17	14:19:10	OKAY
AVERAGE:	2.24 ppm			OKAY

		SF6				
		HRL: 5 ppm				
<u>DATE</u>	<u>TIME</u>	<u>MAX</u>	<u>MIN</u>	<u>AVG</u>	<u>FLAGS</u>	
30-May-17	14:09:45	-0.01	-0.01	-0.01	
30-May-17	14:09:50	-0.01	-0.01	-0.01	
30-May-17	14:09:55	-0.01	-0.01	-0.01	
30-May-17	14:10:00	-0.01	-0.01	-0.01	
30-May-17	14:10:05	-0.01	-0.01	-0.01	
30-May-17	14:10:10	-0.01	-0.01	-0.01	
30-May-17	14:10:15	-0.01	-0.01	-0.01	
30-May-17	14:10:20	-0.01	-0.01	-0.01	
30-May-17	14:10:25	-0.01	-0.01	-0.01	
30-May-17	14:10:30	-0.01	-0.02	-0.01	
30-May-17	14:10:35	-0.02	-0.02	-0.02	
30-May-17	14:10:40	-0.01	-0.02	-0.02	
30-May-17	14:10:45	-0.02	-0.02	-0.02	
30-May-17	14:10:50	-0.01	-0.02	-0.02	
30-May-17	14:10:55	-0.01	-0.02	-0.01	
30-May-17	14:11:00	-0.01	-0.02	-0.01	
30-May-17	14:11:05	-0.01	-0.02	-0.02	
30-May-17	14:11:10	-0.02	-0.02	-0.02	
30-May-17	14:11:15	-0.02	-0.02	-0.02	
30-May-17	14:11:20	-0.02	-0.02	-0.02	
30-May-17	14:11:25	-0.02	-0.02	-0.02	
30-May-17	14:11:30	-0.02	-0.02	-0.02	
30-May-17	14:11:35	-0.02	-0.02	-0.02	
30-May-17	14:11:40	-0.02	-0.02	-0.02	
30-May-17	14:11:45	-0.02	-0.02	-0.02	
30-May-17	14:11:50	-0.02	-0.02	-0.02	
30-May-17	14:11:55	-0.02	-0.02	-0.02	
30-May-17	14:12:00	-0.02	-0.02	-0.02	
30-May-17	14:12:05	-0.02	-0.02	-0.02	
30-May-17	14:12:10	-0.02	-0.02	-0.02	
30-May-17	14:12:15	-0.02	-0.02	-0.02	
30-May-17	14:12:20	-0.02	-0.02	-0.02	

Attachment 3 - InfraRan 91 Raw

<u>DATE</u>	<u>TIME</u>	<u>MAX</u>	<u>MIN</u>	<u>AVG</u>	<u>FLAGS</u>
30-May-17	14:12:25	-0.02	-0.02	-0.02
30-May-17	14:12:30	-0.02	-0.02	-0.02
30-May-17	14:12:35	-0.02	-0.02	-0.02
30-May-17	14:12:40	-0.02	-0.02	-0.02
30-May-17	14:12:45	-0.02	-0.02	-0.02
30-May-17	14:12:50	-0.02	-0.02	-0.02
30-May-17	14:12:55	-0.02	-0.02	-0.02
30-May-17	14:13:00	-0.02	-0.02	-0.02
30-May-17	14:13:05	-0.02	-0.02	-0.02
30-May-17	14:13:10	-0.02	-0.02	-0.02
30-May-17	14:13:15	-0.02	-0.02	-0.02
30-May-17	14:13:20	-0.02	-0.02	-0.02
30-May-17	14:13:25	-0.02	-0.02	-0.02
30-May-17	14:13:30	-0.02	-0.03	-0.03
30-May-17	14:13:35	-0.03	-0.03	-0.03
30-May-17	14:13:40	-0.03	-0.03	-0.03
30-May-17	14:13:45	-0.02	-0.03	-0.02
30-May-17	14:13:50	-0.02	-0.02	-0.02
30-May-17	14:13:55	-0.02	-0.02	-0.02
30-May-17	14:14:00	-0.03	-0.03	-0.03
30-May-17	14:14:05	-0.03	-0.03	-0.03
30-May-17	14:14:10	-0.03	-0.03	-0.03
30-May-17	14:14:15	-0.03	-0.03	-0.03
30-May-17	14:14:20	-0.03	-0.03	-0.03
30-May-17	14:14:25	-0.03	-0.03	-0.03
30-May-17	14:14:30	-0.03	-0.03	-0.03
30-May-17	14:14:35	-0.03	-0.03	-0.03
30-May-17	14:14:40	-0.03	-0.03	-0.03
30-May-17	14:14:45	-0.03	-0.03	-0.03
30-May-17	14:14:50	-0.03	-0.03	-0.03
30-May-17	14:14:55	-0.03	-0.03	-0.03
30-May-17	14:15:00	-0.03	-0.03	-0.03
30-May-17	14:15:05	-0.03	-0.03	-0.03
30-May-17	14:15:10	-0.03	-0.03	-0.03
30-May-17	14:15:15	-0.03	-0.03	-0.03
30-May-17	14:15:20	-0.03	-0.03	-0.03
30-May-17	14:15:25	-0.03	-0.03	-0.03
30-May-17	14:15:30	-0.03	-0.03	-0.03
30-May-17	14:15:35	-0.03	-0.04	-0.03
30-May-17	14:15:40	-0.03	-0.03	-0.03
30-May-17	14:15:45	-0.03	-0.03	-0.03
30-May-17	14:15:50	-0.03	-0.03	-0.03
30-May-17	14:15:55	-0.03	-0.03	-0.03
30-May-17	14:16:00	-0.03	-0.03	-0.03
30-May-17	14:16:05	-0.03	-0.03	-0.03
30-May-17	14:16:10	-0.03	-0.03	-0.03

Attachment 3 - InfraRan 91 Raw

<u>DATE</u>	<u>TIME</u>	<u>MAX</u>	<u>MIN</u>	<u>AVG</u>	<u>FLAGS</u>
30-May-17	14:16:15	-0.03	-0.03	-0.03
30-May-17	14:16:20	-0.03	-0.03	-0.03
30-May-17	14:16:25	-0.03	-0.03	-0.03
30-May-17	14:16:30	-0.03	-0.03	-0.03
30-May-17	14:16:35	-0.03	-0.03	-0.03
30-May-17	14:16:40	-0.03	-0.03	-0.03
30-May-17	14:16:45	-0.03	-0.03	-0.03
30-May-17	14:16:50	-0.03	-0.03	-0.03
30-May-17	14:16:55	-0.03	-0.04	-0.04
30-May-17	14:17:00	-0.04	-0.04	-0.04
30-May-17	14:17:05	-0.04	-0.04	-0.04
30-May-17	14:17:10	-0.04	-0.04	-0.04
30-May-17	14:17:15	-0.04	-0.04	-0.04
30-May-17	14:17:20	-0.04	-0.04	-0.04
30-May-17	14:17:25	-0.04	-0.04	-0.04
30-May-17	14:17:30	-0.04	-0.04	-0.04
30-May-17	14:17:35	-0.04	-0.04	-0.04
30-May-17	14:17:40	-0.04	-0.04	-0.04
30-May-17	14:17:45	-0.04	-0.04	-0.04
30-May-17	14:17:50	-0.04	-0.04	-0.04
30-May-17	14:17:55	-0.04	-0.04	-0.04
30-May-17	14:18:00	-0.04	-0.04	-0.04
30-May-17	14:18:05	-0.04	-0.04	-0.04
30-May-17	14:18:10	-0.04	-0.04	-0.04
30-May-17	14:18:15	-0.04	-0.04	-0.04
30-May-17	14:18:20	-0.04	-0.04	-0.04
30-May-17	14:18:25	-0.04	-0.04	-0.04
30-May-17	14:18:30	-0.04	-0.04	-0.04
30-May-17	14:18:35	-0.04	-0.04	-0.04
30-May-17	14:18:40	-0.04	-0.04	-0.04
30-May-17	14:18:45	-0.04	-0.04	-0.04
30-May-17	14:18:50	-0.04	-0.04	-0.04
30-May-17	14:18:55	-0.04	-0.04	-0.04
30-May-17	14:19:00	-0.04	-0.04	-0.04
30-May-17	14:19:05	-0.04	-0.04	-0.04
30-May-17	14:19:10	-0.04	-0.04	-0.04
30-May-17	14:19:15	-0.04	-0.04	-0.04
30-May-17	14:19:20	0.05	-0.04	0
30-May-17	14:19:25	0.23	0.08	0.16
30-May-17	14:19:30	0.41	0.27	0.34
30-May-17	14:19:35	0.52	0.44	0.49
30-May-17	14:19:40	0.52	0.51	0.52
30-May-17	14:19:45	0.51	0.49	0.5
30-May-17	14:19:50	0.49	0.49	0.49
30-May-17	14:19:55	0.5	0.49	0.49
30-May-17	14:20:00	0.54	0.51	0.52

Attachment 3 - InfraRan 91 Raw

<u>DATE</u>	<u>TIME</u>	<u>MAX</u>	<u>MIN</u>	<u>AVG</u>	<u>FLAGS</u>
30-May-17	14:20:05	0.57	0.55	0.56
30-May-17	14:20:10	0.6	0.58	0.59
30-May-17	14:20:15	0.6	0.59	0.59
30-May-17	14:20:20	0.58	0.58	0.58
30-May-17	14:20:25	0.58	0.57	0.58
30-May-17	14:20:30	0.57	0.57	0.57
30-May-17	14:20:35	0.57	0.57	0.57
30-May-17	14:20:40	0.57	0.57	0.57
30-May-17	14:20:45	0.57	0.56	0.57
30-May-17	14:20:50	0.57	0.56	0.57
30-May-17	14:20:55	0.56	0.56	0.56
30-May-17	14:21:00	0.56	0.56	0.56
30-May-17	14:21:05	0.56	0.56	0.56
30-May-17	14:21:10	0.56	0.56	0.56
30-May-17	14:21:15	0.56	0.56	0.56
30-May-17	14:21:20	0.56	0.55	0.56
30-May-17	14:21:25	0.56	0.55	0.56
30-May-17	14:21:30	0.56	0.55	0.55
30-May-17	14:21:35	0.56	0.56	0.56
30-May-17	14:21:40	0.55	0.55	0.55
30-May-17	14:21:45	0.55	0.55	0.55
30-May-17	14:21:50	0.55	0.55	0.55
30-May-17	14:21:55	0.55	0.55	0.55
30-May-17	14:22:00	0.55	0.55	0.55
30-May-17	14:22:05	0.55	0.55	0.55
30-May-17	14:22:10	0.56	0.55	0.55
30-May-17	14:22:15	0.66	0.58	0.62
30-May-17	14:22:20	0.76	0.68	0.72
30-May-17	14:22:25	0.85	0.78	0.81
30-May-17	14:22:30	0.86	0.85	0.85
30-May-17	14:22:35	0.84	0.82	0.83
30-May-17	14:22:40	0.82	0.81	0.81
30-May-17	14:22:45	0.81	0.8	0.8
30-May-17	14:22:50	0.8	0.8	0.8
30-May-17	14:22:55	0.8	0.79	0.79
30-May-17	14:23:00	0.79	0.79	0.79
30-May-17	14:23:05	0.79	0.79	0.79
30-May-17	14:23:10	0.79	0.79	0.79
30-May-17	14:23:15	0.79	0.79	0.79
30-May-17	14:23:20	0.79	0.79	0.79
30-May-17	14:23:25	0.79	0.79	0.79
30-May-17	14:23:30	0.79	0.79	0.79
30-May-17	14:23:35	0.79	0.78	0.79
30-May-17	14:23:40	0.78	0.78	0.78
30-May-17	14:23:45	0.78	0.78	0.78
30-May-17	14:23:50	0.78	0.78	0.78

<u>DATE</u>	<u>TIME</u>	<u>MAX</u>	<u>MIN</u>	<u>AVG</u>	<u>FLAGS</u>
30-May-17	14:23:55	0.78	0.78	0.78
30-May-17	14:24:00	0.78	0.78	0.78
30-May-17	14:24:05	0.78	0.78	0.78
30-May-17	14:24:10	0.78	0.78	0.78
30-May-17	14:24:15	0.78	0.78	0.78
30-May-17	14:24:20	0.78	0.78	0.78
30-May-17	14:24:25	0.78	0.78	0.78
30-May-17	14:24:30	0.77	0.77	0.77
30-May-17	14:24:35	0.77	0.77	0.77
30-May-17	14:24:40	0.77	0.77	0.77
30-May-17	14:24:45	0.77	0.77	0.77
30-May-17	14:24:50	0.77	0.77	0.77
30-May-17	14:24:55	0.77	0.77	0.77
30-May-17	14:25:00	0.77	0.77	0.77
30-May-17	14:25:05	0.77	0.77	0.77
30-May-17	14:25:10	0.79	0.77	0.77
30-May-17	14:25:15	0.91	0.81	0.86
30-May-17	14:25:20	1.02	0.93	0.98
30-May-17	14:25:25	1.12	1.04	1.08
30-May-17	14:25:30	1.13	1.11	1.12
30-May-17	14:25:35	1.11	1.09	1.1
30-May-17	14:25:40	1.09	1.08	1.08
30-May-17	14:25:45	1.08	1.07	1.07
30-May-17	14:25:50	1.07	1.06	1.06
30-May-17	14:25:55	1.06	1.06	1.06
30-May-17	14:26:00	1.06	1.05	1.05
30-May-17	14:26:05	1.05	1.05	1.05
30-May-17	14:26:10	1.05	1.05	1.05
30-May-17	14:26:15	1.05	1.04	1.04
30-May-17	14:26:20	1.04	1.04	1.04
30-May-17	14:26:25	1.04	1.04	1.04
30-May-17	14:26:30	1.04	1.04	1.04
30-May-17	14:26:35	1.04	1.03	1.03
30-May-17	14:26:40	1.04	1.03	1.04
30-May-17	14:26:45	1.04	1.03	1.03
30-May-17	14:26:50	1.04	1.04	1.04
30-May-17	14:26:55	1.04	1.03	1.04
30-May-17	14:27:00	1.04	1.03	1.04
30-May-17	14:27:05	1.03	1.03	1.03
30-May-17	14:27:10	1.04	1.03	1.03
30-May-17	14:27:15	1.14	1.06	1.1
30-May-17	14:27:20	1.25	1.16	1.2
30-May-17	14:27:25	1.34	1.27	1.31
30-May-17	14:27:30	1.36	1.35	1.35
30-May-17	14:27:35	1.34	1.33	1.34
30-May-17	14:27:40	1.33	1.32	1.32

Attachment 3 - InfraRan 91 Raw

<u>DATE</u>	<u>TIME</u>	<u>MAX</u>	<u>MIN</u>	<u>AVG</u>	<u>FLAGS</u>
30-May-17	14:27:45	1.32	1.31	1.31
30-May-17	14:27:50	1.31	1.3	1.31
30-May-17	14:27:55	1.3	1.3	1.3
30-May-17	14:28:00	1.3	1.3	1.3
30-May-17	14:28:05	1.29	1.29	1.29
30-May-17	14:28:10	1.29	1.29	1.29
30-May-17	14:28:15	1.29	1.29	1.29
30-May-17	14:28:20	1.29	1.29	1.29
30-May-17	14:28:25	1.29	1.29	1.29
30-May-17	14:28:30	1.29	1.28	1.29
30-May-17	14:28:35	1.29	1.28	1.28
30-May-17	14:28:40	1.28	1.28	1.28
30-May-17	14:28:45	1.28	1.28	1.28
30-May-17	14:28:50	1.28	1.28	1.28
30-May-17	14:28:55	1.28	1.28	1.28
30-May-17	14:29:00	1.28	1.28	1.28
30-May-17	14:29:05	1.28	1.28	1.28
30-May-17	14:29:10	1.28	1.28	1.28
30-May-17	14:29:15	1.36	1.29	1.33
30-May-17	14:29:20	1.46	1.38	1.42
30-May-17	14:29:25	1.55	1.48	1.51
30-May-17	14:29:30	1.57	1.56	1.57
30-May-17	14:29:35	1.57	1.56	1.56
30-May-17	14:29:40	1.56	1.55	1.55
30-May-17	14:29:45	1.55	1.55	1.55
30-May-17	14:29:50	1.55	1.54	1.54
30-May-17	14:29:55	1.54	1.54	1.54
30-May-17	14:30:00	1.54	1.53	1.54
30-May-17	14:30:05	1.53	1.53	1.53
30-May-17	14:30:10	1.53	1.53	1.53
30-May-17	14:30:15	1.53	1.53	1.53
30-May-17	14:30:20	1.53	1.53	1.53
30-May-17	14:30:25	1.53	1.53	1.53
30-May-17	14:30:30	1.53	1.53	1.53
30-May-17	14:30:35	1.53	1.52	1.52
30-May-17	14:30:40	1.52	1.52	1.52
30-May-17	14:30:45	1.52	1.52	1.52
30-May-17	14:30:50	1.52	1.52	1.52
30-May-17	14:30:55	1.52	1.51	1.51
30-May-17	14:31:00	1.51	1.51	1.51
30-May-17	14:31:05	1.51	1.51	1.51
30-May-17	14:31:10	1.54	1.51	1.52
30-May-17	14:31:15	1.66	1.56	1.61
30-May-17	14:31:20	1.76	1.68	1.72
30-May-17	14:31:25	1.85	1.78	1.82
30-May-17	14:31:30	1.85	1.83	1.84

Attachment 3 - InfraRan 91 Raw

<u>DATE</u>	<u>TIME</u>	<u>MAX</u>	<u>MIN</u>	<u>AVG</u>	<u>FLAGS</u>
30-May-17	14:31:35	1.83	1.81	1.82
30-May-17	14:31:40	1.81	1.8	1.81
30-May-17	14:31:45	1.8	1.79	1.8
30-May-17	14:31:50	1.79	1.79	1.79
30-May-17	14:31:55	1.78	1.78	1.78
30-May-17	14:32:00	1.78	1.77	1.78
30-May-17	14:32:05	1.77	1.77	1.77
30-May-17	14:32:10	1.77	1.77	1.77
30-May-17	14:32:15	1.77	1.77	1.77
30-May-17	14:32:20	1.77	1.77	1.77
30-May-17	14:32:25	1.77	1.77	1.77
30-May-17	14:32:30	1.77	1.77	1.77
30-May-17	14:32:35	1.77	1.76	1.77
30-May-17	14:32:40	1.76	1.76	1.76
30-May-17	14:32:45	1.76	1.76	1.76
30-May-17	14:32:50	1.76	1.76	1.76
30-May-17	14:32:55	1.76	1.75	1.76
30-May-17	14:33:00	1.76	1.75	1.76
30-May-17	14:33:05	1.75	1.75	1.75
30-May-17	14:33:10	1.78	1.75	1.76
30-May-17	14:33:15	1.88	1.79	1.83
30-May-17	14:33:20	1.98	1.9	1.94
30-May-17	14:33:25	2.08	2.01	2.04
30-May-17	14:33:30	2.08	2.07	2.08
30-May-17	14:33:35	2.07	2.06	2.06
30-May-17	14:33:40	2.05	2.04	2.05
30-May-17	14:33:45	2.04	2.03	2.04
30-May-17	14:33:50	2.03	2.03	2.03
30-May-17	14:33:55	2.03	2.02	2.03
30-May-17	14:34:00	2.02	2.02	2.02
30-May-17	14:34:05	2.02	2.02	2.02
30-May-17	14:34:10	2.02	2.02	2.02
30-May-17	14:34:15	2.02	2.01	2.02
30-May-17	14:34:20	2.02	2.01	2.02
30-May-17	14:34:25	2.02	2.01	2.01
30-May-17	14:34:30	2.01	2.01	2.01
30-May-17	14:34:35	2.01	2.01	2.01
30-May-17	14:34:40	2.01	2	2
30-May-17	14:34:45	2	2	2
30-May-17	14:34:50	2	2	2
30-May-17	14:34:55	2	2	2
30-May-17	14:35:00	2	2	2
30-May-17	14:35:05	2	2	2
30-May-17	14:35:10	2.04	2	2.01
30-May-17	14:35:15	2.15	2.06	2.11
30-May-17	14:35:20	2.25	2.17	2.21

Attachment 3 - InfraRan 91 Raw

<u>DATE</u>	<u>TIME</u>	<u>MAX</u>	<u>MIN</u>	<u>AVG</u>	<u>FLAGS</u>
30-May-17	14:35:25	2.31	2.26	2.29
30-May-17	14:35:30	2.31	2.28	2.29
30-May-17	14:35:35	2.27	2.26	2.27
30-May-17	14:35:40	2.25	2.24	2.25
30-May-17	14:35:45	2.24	2.23	2.24
30-May-17	14:35:50	2.23	2.23	2.23
30-May-17	14:35:55	2.23	2.23	2.23
30-May-17	14:36:00	2.23	2.23	2.23
30-May-17	14:36:05	2.23	2.22	2.23
30-May-17	14:36:10	2.22	2.22	2.22
30-May-17	14:36:15	2.22	2.22	2.22
30-May-17	14:36:20	2.22	2.22	2.22
30-May-17	14:36:25	2.22	2.22	2.22
30-May-17	14:36:30	2.22	2.22	2.22
30-May-17	14:36:35	2.22	2.22	2.22
30-May-17	14:36:40	2.22	2.21	2.21
30-May-17	14:36:45	2.21	2.21	2.21
30-May-17	14:36:50	2.21	2.21	2.21
30-May-17	14:36:55	2.21	2.2	2.21
30-May-17	14:37:00	2.21	2.2	2.2
30-May-17	14:37:05	2.2	2.2	2.2
30-May-17	14:37:10	2.23	2.2	2.21
30-May-17	14:37:15	2.33	2.25	2.29
30-May-17	14:37:20	2.44	2.36	2.4
30-May-17	14:37:25	2.52	2.46	2.49
30-May-17	14:37:30	2.52	2.5	2.51
30-May-17	14:37:35	2.5	2.48	2.49
30-May-17	14:37:40	2.48	2.47	2.47
30-May-17	14:37:45	2.46	2.46	2.46
30-May-17	14:37:50	2.46	2.45	2.45
30-May-17	14:37:55	2.45	2.45	2.45
30-May-17	14:38:00	2.44	2.44	2.44
30-May-17	14:38:05	2.44	2.44	2.44
30-May-17	14:38:10	2.44	2.44	2.44
30-May-17	14:38:15	2.44	2.43	2.44
30-May-17	14:38:20	2.43	2.43	2.43
30-May-17	14:38:25	2.43	2.43	2.43
30-May-17	14:38:30	2.43	2.43	2.43
30-May-17	14:38:35	2.43	2.42	2.42
30-May-17	14:38:40	2.42	2.42	2.42
30-May-17	14:38:45	2.42	2.41	2.42
30-May-17	14:38:50	2.41	2.41	2.41
30-May-17	14:38:55	2.41	2.41	2.41
30-May-17	14:39:00	2.41	2.41	2.41
30-May-17	14:39:05	2.41	2.41	2.41
30-May-17	14:39:10	2.42	2.41	2.41

Attachment 3 - InfraRan 91 Raw

<u>DATE</u>	<u>TIME</u>	<u>MAX</u>	<u>MIN</u>	<u>AVG</u>	<u>FLAGS</u>
30-May-17	14:39:15	2.48	2.43	2.45
30-May-17	14:39:20	2.56	2.5	2.53
30-May-17	14:39:25	2.64	2.58	2.61
30-May-17	14:39:30	2.66	2.65	2.65
30-May-17	14:39:35	2.66	2.65	2.65
30-May-17	14:39:40	2.65	2.65	2.65
30-May-17	14:39:45	2.66	2.65	2.65
30-May-17	14:39:50	2.66	2.66	2.66
30-May-17	14:39:55	2.67	2.66	2.67
30-May-17	14:40:00	2.68	2.67	2.68
30-May-17	14:40:05	2.69	2.68	2.69
30-May-17	14:40:10	2.7	2.69	2.7
30-May-17	14:40:15	2.71	2.7	2.71
30-May-17	14:40:20	2.71	2.71	2.71
30-May-17	14:40:25	2.72	2.71	2.72
30-May-17	14:40:30	2.72	2.72	2.72
30-May-17	14:40:35	2.72	2.72	2.72
30-May-17	14:40:40	2.73	2.72	2.72
30-May-17	14:40:45	2.73	2.73	2.73
30-May-17	14:40:50	2.73	2.73	2.73
30-May-17	14:40:55	2.72	2.72	2.72
30-May-17	14:41:00	2.72	2.72	2.72
30-May-17	14:41:05	2.72	2.72	2.72
30-May-17	14:41:10	2.72	2.72	2.72
30-May-17	14:41:15	2.72	2.72	2.72
30-May-17	14:41:20	2.72	2.72	2.72
30-May-17	14:41:25	2.72	2.72	2.72
30-May-17	14:41:30	2.72	2.72	2.72
30-May-17	14:41:35	2.72	2.72	2.72
30-May-17	14:41:40	2.71	2.71	2.71
30-May-17	14:41:45	2.71	2.71	2.71
30-May-17	14:41:50	2.71	2.7	2.7
30-May-17	14:41:55	2.7	2.7	2.7
30-May-17	14:42:00	2.7	2.7	2.7
30-May-17	14:42:05	2.7	2.7	2.7
30-May-17	14:42:10	2.7	2.7	2.7
30-May-17	14:42:15	2.72	2.7	2.71
30-May-17	14:42:20	2.75	2.72	2.73
30-May-17	14:42:25	2.78	2.75	2.77
30-May-17	14:42:30	2.8	2.79	2.79
30-May-17	14:42:35	2.8	2.79	2.8
30-May-17	14:42:40	2.79	2.79	2.79
30-May-17	14:42:45	2.79	2.79	2.79
30-May-17	14:42:50	2.79	2.79	2.79
30-May-17	14:42:55	2.79	2.79	2.79
30-May-17	14:43:00	2.79	2.78	2.78

<u>DATE</u>	<u>TIME</u>	<u>MAX</u>	<u>MIN</u>	<u>AVG</u>	<u>FLAGS</u>
30-May-17	14:43:05	2.78	2.78	2.78
30-May-17	14:43:10	2.78	2.78	2.78
30-May-17	14:43:15	2.78	2.77	2.78
30-May-17	14:43:20	2.77	2.77	2.77
30-May-17	14:43:25	2.77	2.76	2.77
30-May-17	14:43:30	2.77	2.76	2.76
30-May-17	14:43:35	2.76	2.76	2.76
30-May-17	14:43:40	2.76	2.75	2.75
30-May-17	14:43:45	2.75	2.75	2.75
30-May-17	14:43:50	2.75	2.75	2.75
30-May-17	14:43:55	2.75	2.75	2.75
30-May-17	14:44:00	2.75	2.74	2.75
30-May-17	14:44:05	2.74	2.74	2.74
30-May-17	14:44:10	2.77	2.74	2.75
30-May-17	14:44:15	2.87	2.79	2.83
30-May-17	14:44:20	2.96	2.89	2.93
30-May-17	14:44:25	3.05	2.98	3.02
30-May-17	14:44:30	3.05	3.04	3.05
30-May-17	14:44:35	3.04	3.03	3.03
30-May-17	14:44:40	3.03	3.02	3.02
30-May-17	14:44:45	3.02	3.01	3.02
30-May-17	14:44:50	3.01	3.01	3.01
30-May-17	14:44:55	3.01	3.01	3.01
30-May-17	14:45:00	3	3	3
30-May-17	14:45:05	3	3	3
30-May-17	14:45:10	2.99	2.99	2.99
30-May-17	14:45:15	2.99	2.99	2.99
30-May-17	14:45:20	2.99	2.99	2.99
30-May-17	14:45:25	2.99	2.98	2.98
30-May-17	14:45:30	2.98	2.98	2.98
30-May-17	14:45:35	2.98	2.98	2.98
30-May-17	14:45:40	2.98	2.98	2.98
30-May-17	14:45:45	2.97	2.97	2.97
30-May-17	14:45:50	2.97	2.97	2.97
30-May-17	14:45:55	2.97	2.97	2.97
30-May-17	14:46:00	2.97	2.97	2.97
30-May-17	14:46:05	2.97	2.96	2.97
30-May-17	14:46:10	2.99	2.96	2.97
30-May-17	14:46:15	3.11	3.01	3.06
30-May-17	14:46:20	3.22	3.13	3.18
30-May-17	14:46:25	3.32	3.24	3.28
30-May-17	14:46:30	3.32	3.3	3.32
30-May-17	14:46:35	3.3	3.28	3.29
30-May-17	14:46:40	3.27	3.26	3.27
30-May-17	14:46:45	3.26	3.25	3.25
30-May-17	14:46:50	3.25	3.25	3.25

Attachment 3 - InfraRan 91 Raw

<u>DATE</u>	<u>TIME</u>	<u>MAX</u>	<u>MIN</u>	<u>AVG</u>	<u>FLAGS</u>
30-May-17	14:46:55	3.24	3.24	3.24
30-May-17	14:47:00	3.24	3.24	3.24
30-May-17	14:47:05	3.23	3.23	3.23
30-May-17	14:47:10	3.23	3.23	3.23
30-May-17	14:47:15	3.23	3.22	3.22
30-May-17	14:47:20	3.22	3.22	3.22
30-May-17	14:47:25	3.22	3.22	3.22
30-May-17	14:47:30	3.22	3.22	3.22
30-May-17	14:47:35	3.22	3.21	3.21
30-May-17	14:47:40	3.21	3.21	3.21
30-May-17	14:47:45	3.21	3.21	3.21
30-May-17	14:47:50	3.21	3.2	3.2
30-May-17	14:47:55	3.2	3.2	3.2
30-May-17	14:48:00	3.2	3.19	3.19
30-May-17	14:48:05	3.19	3.19	3.19
30-May-17	14:48:10	3.21	3.19	3.19
30-May-17	14:48:15	3.3	3.22	3.26
30-May-17	14:48:20	3.4	3.32	3.36
30-May-17	14:48:25	3.5	3.42	3.46
30-May-17	14:48:30	3.51	3.5	3.5
30-May-17	14:48:35	3.5	3.48	3.49
30-May-17	14:48:40	3.47	3.46	3.47
30-May-17	14:48:45	3.46	3.46	3.46
30-May-17	14:48:50	3.45	3.45	3.45
30-May-17	14:48:55	3.45	3.45	3.45
30-May-17	14:49:00	3.45	3.44	3.45
30-May-17	14:49:05	3.44	3.44	3.44
30-May-17	14:49:10	3.44	3.43	3.43
30-May-17	14:49:15	3.43	3.42	3.43
30-May-17	14:49:20	3.42	3.42	3.42
30-May-17	14:49:25	3.42	3.42	3.42
30-May-17	14:49:30	3.41	3.41	3.41
30-May-17	14:49:35	3.41	3.41	3.41
30-May-17	14:49:40	3.41	3.41	3.41
30-May-17	14:49:45	3.41	3.41	3.41
30-May-17	14:49:50	3.41	3.41	3.41
30-May-17	14:49:55	3.41	3.41	3.41
30-May-17	14:50:00	3.41	3.4	3.4
30-May-17	14:50:05	3.4	3.39	3.4
30-May-17	14:50:10	3.4	3.39	3.39
30-May-17	14:50:15	3.49	3.42	3.46
30-May-17	14:50:20	3.59	3.51	3.55
30-May-17	14:50:25	3.69	3.62	3.65
30-May-17	14:50:30	3.7	3.69	3.7
30-May-17	14:50:35	3.7	3.69	3.69
30-May-17	14:50:40	3.69	3.68	3.68

Attachment 3 - InfraRan 91 Raw

<u>DATE</u>	<u>TIME</u>	<u>MAX</u>	<u>MIN</u>	<u>AVG</u>	<u>FLAGS</u>
30-May-17	14:50:45	3.68	3.67	3.68
30-May-17	14:50:50	3.67	3.67	3.67
30-May-17	14:50:55	3.67	3.66	3.66
30-May-17	14:51:00	3.66	3.66	3.66
30-May-17	14:51:05	3.66	3.66	3.66
30-May-17	14:51:10	3.66	3.65	3.66
30-May-17	14:51:15	3.65	3.65	3.65
30-May-17	14:51:20	3.65	3.64	3.65
30-May-17	14:51:25	3.64	3.64	3.64
30-May-17	14:51:30	3.64	3.64	3.64
30-May-17	14:51:35	3.64	3.63	3.64
30-May-17	14:51:40	3.63	3.63	3.63
30-May-17	14:51:45	3.63	3.63	3.63
30-May-17	14:51:50	3.63	3.63	3.63
30-May-17	14:51:55	3.63	3.62	3.62
30-May-17	14:52:00	3.62	3.62	3.62
30-May-17	14:52:05	3.62	3.62	3.62
30-May-17	14:52:10	3.61	3.61	3.61
30-May-17	14:52:15	3.61	3.61	3.61
30-May-17	14:52:20	3.62	3.61	3.61
30-May-17	14:52:25	3.69	3.63	3.66
30-May-17	14:52:30	3.78	3.71	3.75
30-May-17	14:52:35	3.87	3.8	3.84
30-May-17	14:52:40	3.89	3.88	3.89
30-May-17	14:52:45	3.89	3.88	3.88
30-May-17	14:52:50	3.88	3.87	3.87
30-May-17	14:52:55	3.87	3.86	3.86
30-May-17	14:53:00	3.86	3.85	3.86
30-May-17	14:53:05	3.85	3.85	3.85
30-May-17	14:53:10	3.85	3.84	3.84
30-May-17	14:53:15	3.84	3.83	3.84
30-May-17	14:53:20	3.83	3.83	3.83
30-May-17	14:53:25	3.83	3.83	3.83
30-May-17	14:53:30	3.83	3.82	3.83
30-May-17	14:53:35	3.82	3.82	3.82
30-May-17	14:53:40	3.82	3.81	3.82
30-May-17	14:53:45	3.81	3.81	3.81
30-May-17	14:53:50	3.81	3.81	3.81
30-May-17	14:53:55	3.81	3.81	3.81
30-May-17	14:54:00	3.81	3.8	3.8
30-May-17	14:54:05	3.8	3.8	3.8
30-May-17	14:54:10	3.82	3.8	3.8
30-May-17	14:54:15	3.89	3.83	3.86
30-May-17	14:54:20	3.98	3.91	3.94
30-May-17	14:54:25	4.05	3.99	4.02
30-May-17	14:54:30	4.06	4.05	4.06

Attachment 3 - InfraRan 91 Raw

<u>DATE</u>	<u>TIME</u>	<u>MAX</u>	<u>MIN</u>	<u>AVG</u>	<u>FLAGS</u>
30-May-17	14:54:35	4.07	4.07	4.07
30-May-17	14:54:40	4.07	4.07	4.07
30-May-17	14:54:45	4.07	4.07	4.07
30-May-17	14:54:50	4.07	4.06	4.06
30-May-17	14:54:55	4.06	4.05	4.06
30-May-17	14:55:00	4.05	4.05	4.05
30-May-17	14:55:05	4.05	4.05	4.05
30-May-17	14:55:10	4.05	4.05	4.05
30-May-17	14:55:15	4.05	4.04	4.05
30-May-17	14:55:20	4.04	4.04	4.04
30-May-17	14:55:25	4.04	4.04	4.04
30-May-17	14:55:30	4.04	4.03	4.03
30-May-17	14:55:35	4.03	4.03	4.03
30-May-17	14:55:40	4.03	4.02	4.03
30-May-17	14:55:45	4.02	4.02	4.02
30-May-17	14:55:50	4.02	4.02	4.02
30-May-17	14:55:55	4.02	4.01	4.01
30-May-17	14:56:00	4.01	4.01	4.01
30-May-17	14:56:05	4.01	4	4
30-May-17	14:56:10	4.02	4	4.01
30-May-17	14:56:15	4.11	4.04	4.07
30-May-17	14:56:20	4.22	4.13	4.18
30-May-17	14:56:25	4.32	4.24	4.29
30-May-17	14:56:30	4.34	4.33	4.34
30-May-17	14:56:35	4.34	4.33	4.34
30-May-17	14:56:40	4.33	4.32	4.32
30-May-17	14:56:45	4.31	4.31	4.31
30-May-17	14:56:50	4.31	4.3	4.31
30-May-17	14:56:55	4.3	4.3	4.3
30-May-17	14:57:00	4.3	4.29	4.3
30-May-17	14:57:05	4.29	4.29	4.29
30-May-17	14:57:10	4.29	4.28	4.28
30-May-17	14:57:15	4.28	4.28	4.28
30-May-17	14:57:20	4.28	4.27	4.27
30-May-17	14:57:25	4.27	4.27	4.27
30-May-17	14:57:30	4.27	4.26	4.27
30-May-17	14:57:35	4.27	4.26	4.26
30-May-17	14:57:40	4.26	4.26	4.26
30-May-17	14:57:45	4.26	4.25	4.26
30-May-17	14:57:50	4.25	4.25	4.25
30-May-17	14:57:55	4.25	4.24	4.24
30-May-17	14:58:00	4.24	4.24	4.24
30-May-17	14:58:05	4.24	4.23	4.23
30-May-17	14:58:10	4.26	4.23	4.24
30-May-17	14:58:15	4.32	4.27	4.29
30-May-17	14:58:20	4.39	4.34	4.37

Attachment 3 - InfraRan 91 Raw

<u>DATE</u>	<u>TIME</u>	<u>MAX</u>	<u>MIN</u>	<u>AVG</u>	<u>FLAGS</u>
30-May-17	14:58:25	4.44	4.41	4.43
30-May-17	14:58:30	4.45	4.45	4.45
30-May-17	14:58:35	4.45	4.45	4.45
30-May-17	14:58:40	4.45	4.45	4.45
30-May-17	14:58:45	4.45	4.45	4.45
30-May-17	14:58:50	4.46	4.45	4.46
30-May-17	14:58:55	4.47	4.46	4.46
30-May-17	14:59:00	4.48	4.47	4.48
30-May-17	14:59:05	4.49	4.48	4.48
30-May-17	14:59:10	4.49	4.49	4.49
30-May-17	14:59:15	4.5	4.49	4.5
30-May-17	14:59:20	4.5	4.5	4.5
30-May-17	14:59:25	4.51	4.51	4.51
30-May-17	14:59:30	4.51	4.51	4.51
30-May-17	14:59:35	4.51	4.51	4.51
30-May-17	14:59:40	4.51	4.51	4.51
30-May-17	14:59:45	4.51	4.5	4.5
30-May-17	14:59:50	4.5	4.5	4.5
30-May-17	14:59:55	4.5	4.49	4.49
30-May-17	15:00:00	4.49	4.49	4.49
30-May-17	15:00:05	4.49	4.49	4.49
30-May-17	15:00:10	4.49	4.48	4.48
30-May-17	15:00:15	4.53	4.49	4.51
30-May-17	15:00:20	4.58	4.54	4.56
30-May-17	15:00:25	4.63	4.59	4.61
30-May-17	15:00:30	4.64	4.63	4.64
30-May-17	15:00:35	4.63	4.63	4.63
30-May-17	15:00:40	4.63	4.62	4.62
30-May-17	15:00:45	4.62	4.62	4.62
30-May-17	15:00:50	4.62	4.61	4.62
30-May-17	15:00:55	4.61	4.61	4.61
30-May-17	15:01:00	4.61	4.61	4.61
30-May-17	15:01:05	4.61	4.61	4.61
30-May-17	15:01:10	4.61	4.6	4.6
30-May-17	15:01:15	4.6	4.59	4.59
30-May-17	15:01:20	4.59	4.58	4.59
30-May-17	15:01:25	4.58	4.58	4.58
30-May-17	15:01:30	4.58	4.57	4.58
30-May-17	15:01:35	4.57	4.57	4.57
30-May-17	15:01:40	4.57	4.57	4.57
30-May-17	15:01:45	4.57	4.57	4.57
30-May-17	15:01:50	4.57	4.57	4.57
30-May-17	15:01:55	4.57	4.56	4.56
30-May-17	15:02:00	4.56	4.56	4.56
30-May-17	15:02:05	4.56	4.55	4.56
30-May-17	15:02:10	4.57	4.56	4.56

Attachment 3 - InfraRan 91 Raw

<u>DATE</u>	<u>TIME</u>	<u>MAX</u>	<u>MIN</u>	<u>AVG</u>	<u>FLAGS</u>
30-May-17	15:02:15	4.65	4.58	4.62
30-May-17	15:02:20	4.75	4.67	4.71
30-May-17	15:02:25	4.84	4.77	4.81
30-May-17	15:02:30	4.86	4.85	4.86
30-May-17	15:02:35	4.86	4.85	4.85
30-May-17	15:02:40	4.85	4.84	4.84
30-May-17	15:02:45	4.84	4.83	4.83
30-May-17	15:02:50	4.82	4.82	4.82
30-May-17	15:02:55	4.82	4.82	4.82
30-May-17	15:03:00	4.82	4.82	4.82
30-May-17	15:03:05	4.82	4.81	4.81
30-May-17	15:03:10	4.81	4.81	4.81
30-May-17	15:03:15	4.81	4.81	4.81
30-May-17	15:03:20	4.8	4.8	4.8
30-May-17	15:03:25	4.8	4.8	4.8
30-May-17	15:03:30	4.79	4.79	4.79
30-May-17	15:03:35	4.79	4.78	4.78
30-May-17	15:03:40	4.78	4.78	4.78
30-May-17	15:03:45	4.78	4.78	4.78
30-May-17	15:03:50	4.78	4.77	4.78
30-May-17	15:03:55	4.77	4.77	4.77
30-May-17	15:04:00	4.77	4.77	4.77
30-May-17	15:04:05	4.77	4.76	4.77
30-May-17	15:04:10	4.77	4.76	4.76
30-May-17	15:04:15	4.84	4.78	4.81
30-May-17	15:04:20	4.93	4.85	4.89
30-May-17	15:04:25	5.01	4.94	4.98	RHL..
30-May-17	15:04:30	5.04	5.02	5.03	RHL..
30-May-17	15:04:35	5.04	5.04	5.04	RHL..
30-May-17	15:04:40	5.04	5.03	5.03	RHL..
30-May-17	15:04:45	5.03	5.03	5.03	RHL..
30-May-17	15:04:50	5.03	5.02	5.03	RHL..
30-May-17	15:04:55	5.02	5.02	5.02	RHL..
30-May-17	15:05:00	5.02	5.02	5.02	RHL..
30-May-17	15:05:05	5.02	5.02	5.02	RHL..
30-May-17	15:05:10	5.02	5.01	5.02	RHL..
30-May-17	15:05:15	5.01	5.01	5.01	RHL..
30-May-17	15:05:20	5.01	5	5.01	RHL..
30-May-17	15:05:25	5	5	5	RHL..
30-May-17	15:05:30	5	4.99	5
30-May-17	15:05:35	4.99	4.99	4.99
30-May-17	15:05:40	4.99	4.98	4.99
30-May-17	15:05:45	4.98	4.98	4.98
30-May-17	15:05:50	4.98	4.97	4.98
30-May-17	15:05:55	4.97	4.97	4.97
30-May-17	15:06:00	4.97	4.96	4.96

<u>DATE</u>	<u>TIME</u>	<u>MAX</u>	<u>MIN</u>	<u>AVG</u>	<u>FLAGS</u>
30-May-17	15:06:05	4.96	4.95	4.96
30-May-17	15:06:10	4.95	4.95	4.95
30-May-17	15:06:15	4.95	4.95	4.95
30-May-17	15:06:20	4.95	4.95	4.95
30-May-17	15:06:25	4.95	4.93	4.94
30-May-17	15:06:30	4.93	4.89	4.91
30-May-17	15:06:35	4.88	4.8	4.85
30-May-17	15:06:40	4.77	4.65	4.71
30-May-17	15:06:45	4.62	4.48	4.55
30-May-17	15:06:50	4.43	4.27	4.35
30-May-17	15:06:55	4.21	3.98	4.1
30-May-17	15:07:00	3.92	3.59	3.76
30-May-17	15:07:05	3.51	3.12	3.32
30-May-17	15:07:10	3.03	2.68	2.85
30-May-17	15:07:15	2.6	2.3	2.45
30-May-17	15:07:20	2.22	1.94	2.08
30-May-17	15:07:25	1.88	1.65	1.76
30-May-17	15:07:30	1.59	1.4	1.49
30-May-17	15:07:35	1.36	1.21	1.28
30-May-17	15:07:40	1.18	1.08	1.13
30-May-17	15:07:45	1.05	0.95	1
30-May-17	15:07:50	0.92	0.82	0.87
30-May-17	15:07:55	0.79	0.69	0.74
30-May-17	15:08:00	0.66	0.56	0.61
30-May-17	15:08:05	0.54	0.46	0.5
30-May-17	15:08:10	0.45	0.4	0.42
30-May-17	15:08:15	0.39	0.35	0.37
30-May-17	15:08:20	0.34	0.29	0.31
30-May-17	15:08:25	0.28	0.25	0.27
30-May-17	15:08:30	0.24	0.21	0.22
30-May-17	15:08:35	0.2	0.18	0.19
30-May-17	15:08:40	0.17	0.15	0.16
30-May-17	15:08:45	0.15	0.13	0.14
30-May-17	15:08:50	0.12	0.11	0.11
30-May-17	15:08:55	0.1	0.09	0.1
30-May-17	15:09:00	0.09	0.08	0.08
30-May-17	15:09:05	0.08	0.07	0.07
30-May-17	15:09:10	0.07	0.06	0.06
30-May-17	15:09:15	0.06	0.05	0.05
30-May-17	15:09:20	0.05	0.04	0.05
30-May-17	15:09:25	0.04	0.04	0.04
30-May-17	15:09:30	0.04	0.03	0.03
30-May-17	15:09:35	0.03	0.02	0.02
30-May-17	15:09:40	0.02	0.02	0.02
30-May-17	15:09:45	0.02	0.01	0.01
30-May-17	15:09:50	0.02	0.01	0.01

<u>DATE</u>	<u>TIME</u>	<u>MAX</u>	<u>MIN</u>	<u>AVG</u>	<u>FLAGS</u>
30-May-17	15:09:55	0.02	0.02	0.02
30-May-17	15:10:00	0.02	0.02	0.02
30-May-17	15:10:05	0.02	0.02	0.02
30-May-17	15:10:10	0.02	0.02	0.02
30-May-17	15:10:15	0.02	0.01	0.02
30-May-17	15:10:20	0.02	0.02	0.02
30-May-17	15:10:25	0.02	0.02	0.02
30-May-17	15:10:30	0.02	0.02	0.02
30-May-17	15:10:35	0.02	0.02	0.02
30-May-17	15:10:40	0.02	0.02	0.02
30-May-17	15:10:45	0.02	0.02	0.02
30-May-17	15:10:50	0.02	0.02	0.02
30-May-17	15:10:55	0.02	0.02	0.02
30-May-17	15:11:00	0.02	0.02	0.02
30-May-17	15:11:05	0.02	0.02	0.02
30-May-17	15:11:10	0.02	0.02	0.02
30-May-17	15:11:15	0.25	0.02	0.11
30-May-17	15:11:20	0.77	0.35	0.56
30-May-17	15:11:25	1.35	0.88	1.12
30-May-17	15:11:30	1.81	1.48	1.68
30-May-17	15:11:35	1.82	1.81	1.82
30-May-17	15:11:40	1.81	1.79	1.8
30-May-17	15:11:45	1.78	1.76	1.77
30-May-17	15:11:50	1.75	1.73	1.74
30-May-17	15:11:55	1.73	1.72	1.72
30-May-17	15:12:00	1.72	1.71	1.71
30-May-17	15:12:05	1.71	1.7	1.7
30-May-17	15:12:10	1.7	1.7	1.7
30-May-17	15:12:15	1.7	1.7	1.7
30-May-17	15:12:20	1.69	1.69	1.69
30-May-17	15:12:25	1.69	1.69	1.69
30-May-17	15:12:30	1.69	1.68	1.68
30-May-17	15:12:35	1.68	1.68	1.68
30-May-17	15:12:40	1.68	1.68	1.68
30-May-17	15:12:45	1.68	1.68	1.68
30-May-17	15:12:50	1.68	1.68	1.68
30-May-17	15:12:55	1.68	1.67	1.67
30-May-17	15:13:00	1.67	1.67	1.67
30-May-17	15:13:05	1.67	1.67	1.67
30-May-17	15:13:10	1.67	1.67	1.67
30-May-17	15:13:15	1.67	1.67	1.67
30-May-17	15:13:20	1.67	1.67	1.67
30-May-17	15:13:25	1.67	1.66	1.67
30-May-17	15:13:30	1.66	1.66	1.66
30-May-17	15:13:35	1.66	1.66	1.66
30-May-17	15:13:40	1.66	1.66	1.66

<u>DATE</u>	<u>TIME</u>	<u>MAX</u>	<u>MIN</u>	<u>AVG</u>	<u>FLAGS</u>
30-May-17	15:13:45	1.66	1.65	1.66
30-May-17	15:13:50	1.66	1.66	1.66
30-May-17	15:13:55	1.66	1.65	1.65
30-May-17	15:14:00	1.65	1.65	1.65
30-May-17	15:14:05	1.65	1.65	1.65
30-May-17	15:14:10	1.65	1.65	1.65
30-May-17	15:14:15	1.65	1.65	1.65
30-May-17	15:14:20	1.65	1.65	1.65
30-May-17	15:14:25	1.65	1.65	1.65
30-May-17	15:14:30	1.65	1.64	1.64
30-May-17	15:14:35	1.64	1.64	1.64
30-May-17	15:14:40	1.64	1.64	1.64
30-May-17	15:14:45	1.64	1.64	1.64
30-May-17	15:14:50	1.64	1.64	1.64
30-May-17	15:14:55	1.64	1.64	1.64
30-May-17	15:15:00	1.64	1.64	1.64
30-May-17	15:15:05	1.64	1.63	1.63
30-May-17	15:15:10	1.63	1.63	1.63
30-May-17	15:15:15	1.63	1.63	1.63
30-May-17	15:15:20	1.63	1.63	1.63
30-May-17	15:15:25	1.63	1.63	1.63
30-May-17	15:15:30	1.63	1.63	1.63
30-May-17	15:15:35	1.63	1.63	1.63
30-May-17	15:15:40	1.64	1.64	1.64
30-May-17	15:15:45	1.66	1.65	1.65
30-May-17	15:15:50	1.67	1.66	1.67
30-May-17	15:15:55	1.69	1.67	1.68
30-May-17	15:16:00	1.7	1.69	1.7
30-May-17	15:16:05	1.71	1.7	1.71
30-May-17	15:16:10	1.72	1.72	1.72
30-May-17	15:16:15	1.73	1.73	1.73
30-May-17	15:16:20	1.74	1.73	1.73
30-May-17	15:16:25	1.74	1.74	1.74
30-May-17	15:16:30	1.75	1.74	1.74
30-May-17	15:16:35	1.75	1.75	1.75
30-May-17	15:16:40	1.75	1.75	1.75
30-May-17	15:16:45	1.75	1.75	1.75
30-May-17	15:16:50	1.75	1.75	1.75
30-May-17	15:16:55	1.75	1.75	1.75
30-May-17	15:17:00	1.75	1.75	1.75
30-May-17	15:17:05	1.75	1.75	1.75
30-May-17	15:17:10	1.75	1.75	1.75
30-May-17	15:17:15	1.79	1.75	1.76
30-May-17	15:17:20	2.08	1.83	1.95
30-May-17	15:17:25	2.46	2.15	2.3
30-May-17	15:17:30	2.84	2.54	2.69

<u>DATE</u>	<u>TIME</u>	<u>MAX</u>	<u>MIN</u>	<u>AVG</u>	<u>FLAGS</u>
30-May-17	15:17:35	2.96	2.89	2.93
30-May-17	15:17:40	2.95	2.93	2.94
30-May-17	15:17:45	2.92	2.9	2.91
30-May-17	15:17:50	2.9	2.88	2.89
30-May-17	15:17:55	2.88	2.87	2.87
30-May-17	15:18:00	2.87	2.86	2.86
30-May-17	15:18:05	2.86	2.86	2.86
30-May-17	15:18:10	2.86	2.85	2.85
30-May-17	15:18:15	2.85	2.85	2.85
30-May-17	15:18:20	2.85	2.85	2.85
30-May-17	15:18:25	2.85	2.84	2.85
30-May-17	15:18:30	2.85	2.84	2.84
30-May-17	15:18:35	2.84	2.84	2.84
30-May-17	15:18:40	2.84	2.83	2.84
30-May-17	15:18:45	2.83	2.83	2.83
30-May-17	15:18:50	2.83	2.82	2.82
30-May-17	15:18:55	2.82	2.82	2.82
30-May-17	15:19:00	2.82	2.82	2.82
30-May-17	15:19:05	2.82	2.82	2.82
30-May-17	15:19:10	2.82	2.82	2.82
30-May-17	15:19:15	2.82	2.82	2.82
30-May-17	15:19:20	2.82	2.81	2.81
30-May-17	15:19:25	2.81	2.81	2.81
30-May-17	15:19:30	2.81	2.8	2.81
30-May-17	15:19:35	2.81	2.8	2.8
30-May-17	15:19:40	2.8	2.8	2.8
30-May-17	15:19:45	2.8	2.8	2.8
30-May-17	15:19:50	2.8	2.79	2.79
30-May-17	15:19:55	2.79	2.79	2.79
30-May-17	15:20:00	2.79	2.79	2.79
30-May-17	15:20:05	2.78	2.78	2.78
30-May-17	15:20:10	2.81	2.78	2.79
30-May-17	15:20:15	3.14	2.85	2.99
30-May-17	15:20:20	3.56	3.22	3.39
30-May-17	15:20:25	3.99	3.65	3.82
30-May-17	15:20:30	4.12	4.06	4.1
30-May-17	15:20:35	4.12	4.1	4.11
30-May-17	15:20:40	4.09	4.08	4.08
30-May-17	15:20:45	4.07	4.06	4.07
30-May-17	15:20:50	4.06	4.05	4.05
30-May-17	15:20:55	4.05	4.04	4.04
30-May-17	15:21:00	4.04	4.03	4.04
30-May-17	15:21:05	4.03	4.03	4.03
30-May-17	15:21:10	4.03	4.02	4.02
30-May-17	15:21:15	4.02	4.02	4.02
30-May-17	15:21:20	4.02	4.02	4.02

Attachment 3 - InfraRan 91 Raw

<u>DATE</u>	<u>TIME</u>	<u>MAX</u>	<u>MIN</u>	<u>AVG</u>	<u>FLAGS</u>
30-May-17	15:21:25	4.02	4.01	4.01
30-May-17	15:21:30	4.01	4.01	4.01
30-May-17	15:21:35	4.01	4.01	4.01
30-May-17	15:21:40	4.01	4.01	4.01
30-May-17	15:21:45	4.01	4	4
30-May-17	15:21:50	4	4	4
30-May-17	15:21:55	4	3.99	3.99
30-May-17	15:22:00	3.99	3.99	3.99
30-May-17	15:22:05	3.99	3.99	3.99
30-May-17	15:22:10	3.98	3.98	3.98
30-May-17	15:22:15	3.98	3.97	3.97
30-May-17	15:22:20	3.97	3.97	3.97
30-May-17	15:22:25	3.97	3.96	3.96
30-May-17	15:22:30	3.96	3.96	3.96
30-May-17	15:22:35	3.96	3.96	3.96
30-May-17	15:22:40	3.96	3.95	3.96
30-May-17	15:22:45	3.95	3.95	3.95
30-May-17	15:22:50	3.95	3.94	3.95
30-May-17	15:22:55	3.94	3.94	3.94
30-May-17	15:23:00	3.94	3.94	3.94
30-May-17	15:23:05	3.94	3.93	3.93
30-May-17	15:23:10	3.93	3.93	3.93
30-May-17	15:23:15	3.93	3.92	3.93
30-May-17	15:23:20	3.92	3.92	3.92
30-May-17	15:23:25	3.92	3.92	3.92
30-May-17	15:23:30	3.92	3.92	3.92
30-May-17	15:23:35	3.92	3.91	3.91
30-May-17	15:23:40	3.91	3.91	3.91
30-May-17	15:23:45	3.91	3.91	3.91
30-May-17	15:23:50	3.91	3.91	3.91
30-May-17	15:23:55	3.91	3.9	3.9
30-May-17	15:24:00	3.9	3.87	3.89
30-May-17	15:24:05	3.85	3.71	3.78
30-May-17	15:24:10	3.68	3.46	3.58
30-May-17	15:24:15	3.39	3.11	3.25
30-May-17	15:24:20	3.05	2.88	2.96
30-May-17	15:24:25	2.84	2.67	2.75
30-May-17	15:24:30	2.64	2.52	2.58
30-May-17	15:24:35	2.48	2.23	2.36
30-May-17	15:24:40	2.16	1.89	2.03
30-May-17	15:24:45	1.8	1.44	1.62
30-May-17	15:24:50	1.36	1.04	1.2
30-May-17	15:24:55	0.97	0.67	0.82
30-May-17	15:25:00	0.61	0.41	0.5
30-May-17	15:25:05	0.36	0.22	0.29
30-May-17	15:25:10	0.19	0.12	0.15

Attachment 3 - InfraRan 91 Raw

<u>DATE</u>	<u>TIME</u>	<u>MAX</u>	<u>MIN</u>	<u>AVG</u>	<u>FLAGS</u>
30-May-17	15:25:15	0.11	0.07	0.09
30-May-17	15:25:20	0.06	0.04	0.05
30-May-17	15:25:25	0.05	0.04	0.04
30-May-17	15:25:30	0.06	0.05	0.06
30-May-17	15:25:35	0.07	0.06	0.07
30-May-17	15:25:40	0.08	0.07	0.07
30-May-17	15:25:45	0.07	0.05	0.06
30-May-17	15:25:50	0.05	0.03	0.04
30-May-17	15:25:55	0.03	0.02	0.02
30-May-17	15:26:00	0.01	0	0.01
30-May-17	15:26:05	0	0	0
30-May-17	15:26:10	0	-0.01	0
30-May-17	15:26:15	0	-0.01	0

LOG RUN STATISTICS

START: 30-May-17 14:08:30
 STOP: 30-May-17 15:24:40

SF6

	<u>CONCENTRATION</u>	<u>DATE</u>	<u>TIME</u>	<u>VALIDITY</u>
MAXIMUM:	5.07 ppm	30-May-17	15:04:40	RANGE+HIGH+LOW
MINIMUM:	-0.05 ppm	30-May-17	14:18:50	OKAY
AVERAGE:	2.29 ppm			OKAY

SF6					
HRL: 5 ppm					
<u>DATE</u>	<u>TIME</u>	<u>MAX</u>	<u>MIN</u>	<u>AVG</u>	<u>FLAGS</u>
30-May-17	14:09:45	-0.03	-0.04	-0.04
30-May-17	14:09:50	-0.04	-0.04	-0.04
30-May-17	14:09:55	-0.04	-0.04	-0.04
30-May-17	14:10:00	-0.04	-0.04	-0.04
30-May-17	14:10:05	-0.04	-0.04	-0.04
30-May-17	14:10:10	-0.04	-0.04	-0.04
30-May-17	14:10:15	-0.04	-0.04	-0.04
30-May-17	14:10:20	-0.04	-0.04	-0.04
30-May-17	14:10:25	-0.03	-0.04	-0.04
30-May-17	14:10:30	-0.03	-0.04	-0.03
30-May-17	14:10:35	-0.03	-0.04	-0.03
30-May-17	14:10:40	-0.04	-0.04	-0.04
30-May-17	14:10:45	-0.04	-0.04	-0.04
30-May-17	14:10:50	-0.04	-0.04	-0.04
30-May-17	14:10:55	-0.04	-0.04	-0.04
30-May-17	14:11:00	-0.04	-0.04	-0.04
30-May-17	14:11:05	-0.04	-0.04	-0.04
30-May-17	14:11:10	-0.04	-0.04	-0.04
30-May-17	14:11:15	-0.04	-0.04	-0.04
30-May-17	14:11:20	-0.04	-0.04	-0.04
30-May-17	14:11:25	-0.04	-0.04	-0.04
30-May-17	14:11:30	-0.04	-0.04	-0.04
30-May-17	14:11:35	-0.04	-0.04	-0.04
30-May-17	14:11:40	-0.04	-0.04	-0.04
30-May-17	14:11:45	-0.04	-0.04	-0.04
30-May-17	14:11:50	-0.04	-0.04	-0.04
30-May-17	14:11:55	-0.04	-0.04	-0.04
30-May-17	14:12:00	-0.04	-0.04	-0.04
30-May-17	14:12:05	-0.04	-0.04	-0.04
30-May-17	14:12:10	-0.04	-0.04	-0.04
30-May-17	14:12:15	-0.04	-0.04	-0.04
30-May-17	14:12:20	-0.04	-0.04	-0.04

<u>DATE</u>	<u>TIME</u>	<u>MAX</u>	<u>MIN</u>	<u>AVG</u>	<u>FLAGS</u>
30-May-17	14:12:25	-0.04	-0.04	-0.04
30-May-17	14:12:30	-0.04	-0.04	-0.04
30-May-17	14:12:35	-0.04	-0.04	-0.04
30-May-17	14:12:40	-0.04	-0.04	-0.04
30-May-17	14:12:45	-0.04	-0.04	-0.04
30-May-17	14:12:50	-0.04	-0.04	-0.04
30-May-17	14:12:55	-0.04	-0.04	-0.04
30-May-17	14:13:00	-0.04	-0.04	-0.04
30-May-17	14:13:05	-0.04	-0.04	-0.04
30-May-17	14:13:10	-0.04	-0.04	-0.04
30-May-17	14:13:15	-0.04	-0.04	-0.04
30-May-17	14:13:20	-0.04	-0.04	-0.04
30-May-17	14:13:25	-0.04	-0.04	-0.04
30-May-17	14:13:30	-0.04	-0.04	-0.04
30-May-17	14:13:35	-0.04	-0.04	-0.04
30-May-17	14:13:40	-0.04	-0.04	-0.04
30-May-17	14:13:45	-0.04	-0.04	-0.04
30-May-17	14:13:50	-0.04	-0.04	-0.04
30-May-17	14:13:55	-0.04	-0.04	-0.04
30-May-17	14:14:00	-0.04	-0.04	-0.04
30-May-17	14:14:05	-0.04	-0.04	-0.04
30-May-17	14:14:10	-0.04	-0.04	-0.04
30-May-17	14:14:15	-0.04	-0.04	-0.04
30-May-17	14:14:20	-0.04	-0.04	-0.04
30-May-17	14:14:25	-0.04	-0.04	-0.04
30-May-17	14:14:30	-0.04	-0.04	-0.04
30-May-17	14:14:35	-0.04	-0.04	-0.04
30-May-17	14:14:40	-0.04	-0.04	-0.04
30-May-17	14:14:45	-0.04	-0.04	-0.04
30-May-17	14:14:50	-0.04	-0.04	-0.04
30-May-17	14:14:55	-0.04	-0.04	-0.04
30-May-17	14:15:00	-0.04	-0.04	-0.04
30-May-17	14:15:05	-0.04	-0.04	-0.04
30-May-17	14:15:10	-0.04	-0.04	-0.04
30-May-17	14:15:15	-0.04	-0.04	-0.04
30-May-17	14:15:20	-0.04	-0.04	-0.04
30-May-17	14:15:25	-0.04	-0.04	-0.04
30-May-17	14:15:30	-0.04	-0.05	-0.04
30-May-17	14:15:35	-0.04	-0.05	-0.04
30-May-17	14:15:40	-0.05	-0.05	-0.05
30-May-17	14:15:45	-0.04	-0.05	-0.04
30-May-17	14:15:50	-0.04	-0.05	-0.04
30-May-17	14:15:55	-0.04	-0.04	-0.04
30-May-17	14:16:00	-0.04	-0.04	-0.04
30-May-17	14:16:05	-0.04	-0.04	-0.04
30-May-17	14:16:10	-0.04	-0.04	-0.04

Attachment 3 - InfraRan 92 Raw

<u>DATE</u>	<u>TIME</u>	<u>MAX</u>	<u>MIN</u>	<u>AVG</u>	<u>FLAGS</u>
30-May-17	14:16:15	-0.04	-0.05	-0.04
30-May-17	14:16:20	-0.04	-0.04	-0.04
30-May-17	14:16:25	-0.04	-0.04	-0.04
30-May-17	14:16:30	-0.04	-0.05	-0.05
30-May-17	14:16:35	-0.04	-0.05	-0.05
30-May-17	14:16:40	-0.05	-0.05	-0.05
30-May-17	14:16:45	-0.05	-0.05	-0.05
30-May-17	14:16:50	-0.05	-0.05	-0.05
30-May-17	14:16:55	-0.05	-0.05	-0.05
30-May-17	14:17:00	-0.05	-0.05	-0.05
30-May-17	14:17:05	-0.05	-0.05	-0.05
30-May-17	14:17:10	-0.05	-0.05	-0.05
30-May-17	14:17:15	-0.05	-0.05	-0.05
30-May-17	14:17:20	-0.05	-0.05	-0.05
30-May-17	14:17:25	-0.05	-0.05	-0.05
30-May-17	14:17:30	-0.05	-0.05	-0.05
30-May-17	14:17:35	-0.05	-0.05	-0.05
30-May-17	14:17:40	-0.05	-0.05	-0.05
30-May-17	14:17:45	-0.05	-0.05	-0.05
30-May-17	14:17:50	-0.05	-0.05	-0.05
30-May-17	14:17:55	-0.05	-0.05	-0.05
30-May-17	14:18:00	-0.05	-0.05	-0.05
30-May-17	14:18:05	-0.05	-0.05	-0.05
30-May-17	14:18:10	-0.05	-0.05	-0.05
30-May-17	14:18:15	-0.05	-0.05	-0.05
30-May-17	14:18:20	-0.05	-0.05	-0.05
30-May-17	14:18:25	-0.05	-0.05	-0.05
30-May-17	14:18:30	-0.05	-0.05	-0.05
30-May-17	14:18:35	-0.05	-0.05	-0.05
30-May-17	14:18:40	-0.05	-0.05	-0.05
30-May-17	14:18:45	-0.05	-0.05	-0.05
30-May-17	14:18:50	-0.05	-0.05	-0.05
30-May-17	14:18:55	-0.05	-0.05	-0.05
30-May-17	14:19:00	-0.05	-0.05	-0.05
30-May-17	14:19:05	-0.05	-0.05	-0.05
30-May-17	14:19:10	-0.05	-0.05	-0.05
30-May-17	14:19:15	-0.05	-0.05	-0.05
30-May-17	14:19:20	0	-0.05	-0.03
30-May-17	14:19:25	0.15	0.02	0.08
30-May-17	14:19:30	0.32	0.18	0.25
30-May-17	14:19:35	0.47	0.36	0.42
30-May-17	14:19:40	0.5	0.48	0.49
30-May-17	14:19:45	0.5	0.49	0.5
30-May-17	14:19:50	0.49	0.49	0.49
30-May-17	14:19:55	0.49	0.48	0.49
30-May-17	14:20:00	0.53	0.5	0.51

<u>DATE</u>	<u>TIME</u>	<u>MAX</u>	<u>MIN</u>	<u>AVG</u>	<u>FLAGS</u>
30-May-17	14:20:05	0.56	0.53	0.55
30-May-17	14:20:10	0.58	0.56	0.57
30-May-17	14:20:15	0.58	0.58	0.58
30-May-17	14:20:20	0.58	0.57	0.58
30-May-17	14:20:25	0.57	0.57	0.57
30-May-17	14:20:30	0.57	0.56	0.56
30-May-17	14:20:35	0.56	0.56	0.56
30-May-17	14:20:40	0.56	0.56	0.56
30-May-17	14:20:45	0.56	0.56	0.56
30-May-17	14:20:50	0.56	0.56	0.56
30-May-17	14:20:55	0.56	0.56	0.56
30-May-17	14:21:00	0.56	0.56	0.56
30-May-17	14:21:05	0.56	0.56	0.56
30-May-17	14:21:10	0.56	0.55	0.55
30-May-17	14:21:15	0.55	0.55	0.55
30-May-17	14:21:20	0.55	0.55	0.55
30-May-17	14:21:25	0.55	0.55	0.55
30-May-17	14:21:30	0.55	0.55	0.55
30-May-17	14:21:35	0.55	0.55	0.55
30-May-17	14:21:40	0.55	0.55	0.55
30-May-17	14:21:45	0.55	0.55	0.55
30-May-17	14:21:50	0.55	0.55	0.55
30-May-17	14:21:55	0.55	0.54	0.54
30-May-17	14:22:00	0.54	0.54	0.54
30-May-17	14:22:05	0.54	0.54	0.54
30-May-17	14:22:10	0.55	0.54	0.54
30-May-17	14:22:15	0.61	0.55	0.58
30-May-17	14:22:20	0.71	0.63	0.67
30-May-17	14:22:25	0.81	0.73	0.77
30-May-17	14:22:30	0.84	0.82	0.84
30-May-17	14:22:35	0.84	0.83	0.83
30-May-17	14:22:40	0.82	0.81	0.82
30-May-17	14:22:45	0.81	0.8	0.81
30-May-17	14:22:50	0.8	0.8	0.8
30-May-17	14:22:55	0.8	0.79	0.79
30-May-17	14:23:00	0.79	0.79	0.79
30-May-17	14:23:05	0.79	0.79	0.79
30-May-17	14:23:10	0.78	0.78	0.78
30-May-17	14:23:15	0.79	0.78	0.78
30-May-17	14:23:20	0.79	0.78	0.78
30-May-17	14:23:25	0.78	0.78	0.78
30-May-17	14:23:30	0.78	0.78	0.78
30-May-17	14:23:35	0.78	0.78	0.78
30-May-17	14:23:40	0.78	0.78	0.78
30-May-17	14:23:45	0.78	0.78	0.78
30-May-17	14:23:50	0.78	0.78	0.78

<u>DATE</u>	<u>TIME</u>	<u>MAX</u>	<u>MIN</u>	<u>AVG</u>	<u>FLAGS</u>
30-May-17	14:23:55	0.78	0.77	0.77
30-May-17	14:24:00	0.77	0.77	0.77
30-May-17	14:24:05	0.77	0.77	0.77
30-May-17	14:24:10	0.77	0.77	0.77
30-May-17	14:24:15	0.77	0.77	0.77
30-May-17	14:24:20	0.77	0.77	0.77
30-May-17	14:24:25	0.77	0.77	0.77
30-May-17	14:24:30	0.77	0.77	0.77
30-May-17	14:24:35	0.77	0.76	0.77
30-May-17	14:24:40	0.77	0.76	0.77
30-May-17	14:24:45	0.77	0.76	0.77
30-May-17	14:24:50	0.77	0.76	0.77
30-May-17	14:24:55	0.77	0.76	0.77
30-May-17	14:25:00	0.77	0.76	0.76
30-May-17	14:25:05	0.76	0.76	0.76
30-May-17	14:25:10	0.76	0.76	0.76
30-May-17	14:25:15	0.85	0.78	0.81
30-May-17	14:25:20	0.96	0.87	0.92
30-May-17	14:25:25	1.08	0.99	1.03
30-May-17	14:25:30	1.11	1.09	1.1
30-May-17	14:25:35	1.11	1.1	1.1
30-May-17	14:25:40	1.09	1.08	1.09
30-May-17	14:25:45	1.08	1.07	1.07
30-May-17	14:25:50	1.07	1.06	1.06
30-May-17	14:25:55	1.06	1.05	1.06
30-May-17	14:26:00	1.05	1.05	1.05
30-May-17	14:26:05	1.05	1.05	1.05
30-May-17	14:26:10	1.05	1.04	1.05
30-May-17	14:26:15	1.04	1.04	1.04
30-May-17	14:26:20	1.04	1.04	1.04
30-May-17	14:26:25	1.04	1.04	1.04
30-May-17	14:26:30	1.04	1.04	1.04
30-May-17	14:26:35	1.04	1.04	1.04
30-May-17	14:26:40	1.04	1.03	1.03
30-May-17	14:26:45	1.03	1.03	1.03
30-May-17	14:26:50	1.03	1.03	1.03
30-May-17	14:26:55	1.03	1.03	1.03
30-May-17	14:27:00	1.03	1.03	1.03
30-May-17	14:27:05	1.03	1.03	1.03
30-May-17	14:27:10	1.04	1.03	1.03
30-May-17	14:27:15	1.12	1.05	1.08
30-May-17	14:27:20	1.22	1.14	1.18
30-May-17	14:27:25	1.32	1.24	1.28
30-May-17	14:27:30	1.34	1.33	1.34
30-May-17	14:27:35	1.34	1.33	1.34
30-May-17	14:27:40	1.33	1.32	1.32

<u>DATE</u>	<u>TIME</u>	<u>MAX</u>	<u>MIN</u>	<u>AVG</u>	<u>FLAGS</u>
30-May-17	14:27:45	1.32	1.31	1.31
30-May-17	14:27:50	1.31	1.31	1.31
30-May-17	14:27:55	1.3	1.3	1.3
30-May-17	14:28:00	1.3	1.3	1.3
30-May-17	14:28:05	1.3	1.3	1.3
30-May-17	14:28:10	1.3	1.29	1.3
30-May-17	14:28:15	1.3	1.29	1.29
30-May-17	14:28:20	1.29	1.29	1.29
30-May-17	14:28:25	1.29	1.29	1.29
30-May-17	14:28:30	1.29	1.29	1.29
30-May-17	14:28:35	1.29	1.29	1.29
30-May-17	14:28:40	1.29	1.29	1.29
30-May-17	14:28:45	1.29	1.29	1.29
30-May-17	14:28:50	1.29	1.28	1.28
30-May-17	14:28:55	1.28	1.28	1.28
30-May-17	14:29:00	1.28	1.28	1.28
30-May-17	14:29:05	1.28	1.28	1.28
30-May-17	14:29:10	1.28	1.28	1.28
30-May-17	14:29:15	1.33	1.29	1.31
30-May-17	14:29:20	1.42	1.35	1.39
30-May-17	14:29:25	1.52	1.44	1.48
30-May-17	14:29:30	1.57	1.53	1.55
30-May-17	14:29:35	1.57	1.57	1.57
30-May-17	14:29:40	1.56	1.55	1.56
30-May-17	14:29:45	1.55	1.55	1.55
30-May-17	14:29:50	1.55	1.55	1.55
30-May-17	14:29:55	1.55	1.54	1.54
30-May-17	14:30:00	1.54	1.54	1.54
30-May-17	14:30:05	1.54	1.53	1.54
30-May-17	14:30:10	1.53	1.53	1.53
30-May-17	14:30:15	1.54	1.53	1.53
30-May-17	14:30:20	1.53	1.53	1.53
30-May-17	14:30:25	1.53	1.53	1.53
30-May-17	14:30:30	1.52	1.52	1.52
30-May-17	14:30:35	1.52	1.52	1.52
30-May-17	14:30:40	1.52	1.52	1.52
30-May-17	14:30:45	1.52	1.52	1.52
30-May-17	14:30:50	1.52	1.52	1.52
30-May-17	14:30:55	1.52	1.52	1.52
30-May-17	14:31:00	1.52	1.52	1.52
30-May-17	14:31:05	1.52	1.52	1.52
30-May-17	14:31:10	1.53	1.52	1.52
30-May-17	14:31:15	1.61	1.54	1.57
30-May-17	14:31:20	1.72	1.64	1.68
30-May-17	14:31:25	1.82	1.74	1.78
30-May-17	14:31:30	1.84	1.83	1.83

Attachment 3 - InfraRan 92 Raw

<u>DATE</u>	<u>TIME</u>	<u>MAX</u>	<u>MIN</u>	<u>AVG</u>	<u>FLAGS</u>
30-May-17	14:31:35	1.83	1.82	1.82
30-May-17	14:31:40	1.81	1.8	1.81
30-May-17	14:31:45	1.8	1.8	1.8
30-May-17	14:31:50	1.79	1.79	1.79
30-May-17	14:31:55	1.79	1.78	1.78
30-May-17	14:32:00	1.78	1.78	1.78
30-May-17	14:32:05	1.78	1.77	1.77
30-May-17	14:32:10	1.77	1.77	1.77
30-May-17	14:32:15	1.77	1.77	1.77
30-May-17	14:32:20	1.77	1.77	1.77
30-May-17	14:32:25	1.77	1.77	1.77
30-May-17	14:32:30	1.77	1.76	1.76
30-May-17	14:32:35	1.76	1.76	1.76
30-May-17	14:32:40	1.76	1.76	1.76
30-May-17	14:32:45	1.76	1.76	1.76
30-May-17	14:32:50	1.76	1.76	1.76
30-May-17	14:32:55	1.76	1.76	1.76
30-May-17	14:33:00	1.76	1.76	1.76
30-May-17	14:33:05	1.76	1.76	1.76
30-May-17	14:33:10	1.77	1.75	1.76
30-May-17	14:33:15	1.86	1.78	1.82
30-May-17	14:33:20	1.96	1.88	1.92
30-May-17	14:33:25	2.06	1.98	2.02
30-May-17	14:33:30	2.07	2.07	2.07
30-May-17	14:33:35	2.07	2.06	2.07
30-May-17	14:33:40	2.06	2.05	2.06
30-May-17	14:33:45	2.05	2.04	2.05
30-May-17	14:33:50	2.04	2.04	2.04
30-May-17	14:33:55	2.04	2.03	2.03
30-May-17	14:34:00	2.03	2.02	2.03
30-May-17	14:34:05	2.02	2.02	2.02
30-May-17	14:34:10	2.02	2.02	2.02
30-May-17	14:34:15	2.02	2.02	2.02
30-May-17	14:34:20	2.02	2.01	2.01
30-May-17	14:34:25	2.01	2.01	2.01
30-May-17	14:34:30	2.01	2.01	2.01
30-May-17	14:34:35	2.01	2.01	2.01
30-May-17	14:34:40	2.01	2.01	2.01
30-May-17	14:34:45	2.01	2.01	2.01
30-May-17	14:34:50	2.01	2	2
30-May-17	14:34:55	2	2	2
30-May-17	14:35:00	2	2	2
30-May-17	14:35:05	2	2	2
30-May-17	14:35:10	2.01	2	2
30-May-17	14:35:15	2.1	2.02	2.06
30-May-17	14:35:20	2.19	2.12	2.16

<u>DATE</u>	<u>TIME</u>	<u>MAX</u>	<u>MIN</u>	<u>AVG</u>	<u>FLAGS</u>
30-May-17	14:35:25	2.28	2.21	2.25
30-May-17	14:35:30	2.29	2.29	2.29
30-May-17	14:35:35	2.28	2.27	2.28
30-May-17	14:35:40	2.27	2.26	2.26
30-May-17	14:35:45	2.25	2.24	2.25
30-May-17	14:35:50	2.24	2.24	2.24
30-May-17	14:35:55	2.24	2.23	2.24
30-May-17	14:36:00	2.23	2.23	2.23
30-May-17	14:36:05	2.23	2.23	2.23
30-May-17	14:36:10	2.23	2.23	2.23
30-May-17	14:36:15	2.23	2.23	2.23
30-May-17	14:36:20	2.22	2.22	2.22
30-May-17	14:36:25	2.22	2.22	2.22
30-May-17	14:36:30	2.22	2.21	2.21
30-May-17	14:36:35	2.21	2.21	2.21
30-May-17	14:36:40	2.21	2.21	2.21
30-May-17	14:36:45	2.21	2.21	2.21
30-May-17	14:36:50	2.21	2.21	2.21
30-May-17	14:36:55	2.21	2.21	2.21
30-May-17	14:37:00	2.21	2.21	2.21
30-May-17	14:37:05	2.21	2.2	2.2
30-May-17	14:37:10	2.21	2.2	2.2
30-May-17	14:37:15	2.29	2.22	2.25
30-May-17	14:37:20	2.39	2.31	2.35
30-May-17	14:37:25	2.49	2.41	2.45
30-May-17	14:37:30	2.51	2.5	2.51
30-May-17	14:37:35	2.5	2.49	2.49
30-May-17	14:37:40	2.48	2.47	2.48
30-May-17	14:37:45	2.47	2.46	2.46
30-May-17	14:37:50	2.46	2.46	2.46
30-May-17	14:37:55	2.46	2.45	2.45
30-May-17	14:38:00	2.45	2.45	2.45
30-May-17	14:38:05	2.45	2.45	2.45
30-May-17	14:38:10	2.44	2.44	2.44
30-May-17	14:38:15	2.44	2.44	2.44
30-May-17	14:38:20	2.44	2.44	2.44
30-May-17	14:38:25	2.44	2.43	2.43
30-May-17	14:38:30	2.43	2.43	2.43
30-May-17	14:38:35	2.43	2.42	2.43
30-May-17	14:38:40	2.42	2.42	2.42
30-May-17	14:38:45	2.42	2.42	2.42
30-May-17	14:38:50	2.42	2.42	2.42
30-May-17	14:38:55	2.42	2.42	2.42
30-May-17	14:39:00	2.42	2.42	2.42
30-May-17	14:39:05	2.41	2.41	2.41
30-May-17	14:39:10	2.42	2.41	2.41

<u>DATE</u>	<u>TIME</u>	<u>MAX</u>	<u>MIN</u>	<u>AVG</u>	<u>FLAGS</u>
30-May-17	14:39:15	2.47	2.42	2.44
30-May-17	14:39:20	2.54	2.48	2.51
30-May-17	14:39:25	2.62	2.56	2.59
30-May-17	14:39:30	2.66	2.63	2.65
30-May-17	14:39:35	2.66	2.66	2.66
30-May-17	14:39:40	2.66	2.66	2.66
30-May-17	14:39:45	2.67	2.66	2.66
30-May-17	14:39:50	2.67	2.67	2.67
30-May-17	14:39:55	2.67	2.67	2.67
30-May-17	14:40:00	2.68	2.67	2.68
30-May-17	14:40:05	2.69	2.68	2.69
30-May-17	14:40:10	2.7	2.69	2.7
30-May-17	14:40:15	2.71	2.7	2.71
30-May-17	14:40:20	2.72	2.71	2.71
30-May-17	14:40:25	2.72	2.72	2.72
30-May-17	14:40:30	2.73	2.72	2.72
30-May-17	14:40:35	2.73	2.72	2.73
30-May-17	14:40:40	2.73	2.73	2.73
30-May-17	14:40:45	2.73	2.73	2.73
30-May-17	14:40:50	2.73	2.73	2.73
30-May-17	14:40:55	2.73	2.73	2.73
30-May-17	14:41:00	2.73	2.73	2.73
30-May-17	14:41:05	2.73	2.73	2.73
30-May-17	14:41:10	2.73	2.73	2.73
30-May-17	14:41:15	2.73	2.72	2.72
30-May-17	14:41:20	2.73	2.72	2.73
30-May-17	14:41:25	2.73	2.73	2.73
30-May-17	14:41:30	2.73	2.73	2.73
30-May-17	14:41:35	2.73	2.73	2.73
30-May-17	14:41:40	2.72	2.72	2.72
30-May-17	14:41:45	2.72	2.72	2.72
30-May-17	14:41:50	2.72	2.72	2.72
30-May-17	14:41:55	2.72	2.71	2.72
30-May-17	14:42:00	2.71	2.71	2.71
30-May-17	14:42:05	2.71	2.7	2.71
30-May-17	14:42:10	2.7	2.7	2.7
30-May-17	14:42:15	2.71	2.7	2.71
30-May-17	14:42:20	2.74	2.72	2.73
30-May-17	14:42:25	2.78	2.75	2.77
30-May-17	14:42:30	2.81	2.79	2.8
30-May-17	14:42:35	2.81	2.81	2.81
30-May-17	14:42:40	2.81	2.8	2.81
30-May-17	14:42:45	2.8	2.79	2.8
30-May-17	14:42:50	2.79	2.79	2.79
30-May-17	14:42:55	2.79	2.79	2.79
30-May-17	14:43:00	2.79	2.79	2.79

<u>DATE</u>	<u>TIME</u>	<u>MAX</u>	<u>MIN</u>	<u>AVG</u>	<u>FLAGS</u>
30-May-17	14:43:05	2.79	2.79	2.79
30-May-17	14:43:10	2.79	2.78	2.79
30-May-17	14:43:15	2.78	2.78	2.78
30-May-17	14:43:20	2.78	2.78	2.78
30-May-17	14:43:25	2.78	2.77	2.77
30-May-17	14:43:30	2.77	2.77	2.77
30-May-17	14:43:35	2.77	2.77	2.77
30-May-17	14:43:40	2.77	2.77	2.77
30-May-17	14:43:45	2.77	2.76	2.76
30-May-17	14:43:50	2.76	2.76	2.76
30-May-17	14:43:55	2.76	2.76	2.76
30-May-17	14:44:00	2.76	2.75	2.75
30-May-17	14:44:05	2.75	2.75	2.75
30-May-17	14:44:10	2.75	2.75	2.75
30-May-17	14:44:15	2.83	2.77	2.8
30-May-17	14:44:20	2.93	2.85	2.89
30-May-17	14:44:25	3.03	2.95	2.99
30-May-17	14:44:30	3.05	3.04	3.05
30-May-17	14:44:35	3.05	3.05	3.05
30-May-17	14:44:40	3.04	3.04	3.04
30-May-17	14:44:45	3.03	3.03	3.03
30-May-17	14:44:50	3.03	3.02	3.03
30-May-17	14:44:55	3.02	3.02	3.02
30-May-17	14:45:00	3.02	3.02	3.02
30-May-17	14:45:05	3.02	3.01	3.01
30-May-17	14:45:10	3.01	3.01	3.01
30-May-17	14:45:15	3.01	3.01	3.01
30-May-17	14:45:20	3.01	3.01	3.01
30-May-17	14:45:25	3	3	3
30-May-17	14:45:30	3	3	3
30-May-17	14:45:35	3	2.99	2.99
30-May-17	14:45:40	2.99	2.99	2.99
30-May-17	14:45:45	2.99	2.99	2.99
30-May-17	14:45:50	2.99	2.98	2.98
30-May-17	14:45:55	2.98	2.98	2.98
30-May-17	14:46:00	2.98	2.98	2.98
30-May-17	14:46:05	2.98	2.98	2.98
30-May-17	14:46:10	2.99	2.98	2.98
30-May-17	14:46:15	3.1	3.01	3.05
30-May-17	14:46:20	3.21	3.12	3.17
30-May-17	14:46:25	3.31	3.23	3.27
30-May-17	14:46:30	3.32	3.32	3.32
30-May-17	14:46:35	3.31	3.29	3.3
30-May-17	14:46:40	3.29	3.28	3.29
30-May-17	14:46:45	3.28	3.27	3.27
30-May-17	14:46:50	3.27	3.26	3.27

<u>DATE</u>	<u>TIME</u>	<u>MAX</u>	<u>MIN</u>	<u>AVG</u>	<u>FLAGS</u>
30-May-17	14:46:55	3.26	3.26	3.26
30-May-17	14:47:00	3.26	3.25	3.26
30-May-17	14:47:05	3.25	3.25	3.25
30-May-17	14:47:10	3.25	3.24	3.25
30-May-17	14:47:15	3.24	3.24	3.24
30-May-17	14:47:20	3.24	3.23	3.23
30-May-17	14:47:25	3.23	3.23	3.23
30-May-17	14:47:30	3.23	3.23	3.23
30-May-17	14:47:35	3.23	3.23	3.23
30-May-17	14:47:40	3.22	3.22	3.22
30-May-17	14:47:45	3.22	3.22	3.22
30-May-17	14:47:50	3.22	3.22	3.22
30-May-17	14:47:55	3.22	3.21	3.22
30-May-17	14:48:00	3.21	3.21	3.21
30-May-17	14:48:05	3.21	3.21	3.21
30-May-17	14:48:10	3.21	3.21	3.21
30-May-17	14:48:15	3.29	3.22	3.25
30-May-17	14:48:20	3.38	3.3	3.34
30-May-17	14:48:25	3.48	3.4	3.44
30-May-17	14:48:30	3.52	3.5	3.51
30-May-17	14:48:35	3.51	3.5	3.51
30-May-17	14:48:40	3.49	3.49	3.49
30-May-17	14:48:45	3.48	3.47	3.48
30-May-17	14:48:50	3.47	3.47	3.47
30-May-17	14:48:55	3.46	3.46	3.46
30-May-17	14:49:00	3.45	3.45	3.45
30-May-17	14:49:05	3.45	3.45	3.45
30-May-17	14:49:10	3.45	3.45	3.45
30-May-17	14:49:15	3.45	3.44	3.45
30-May-17	14:49:20	3.44	3.44	3.44
30-May-17	14:49:25	3.44	3.44	3.44
30-May-17	14:49:30	3.44	3.43	3.43
30-May-17	14:49:35	3.43	3.43	3.43
30-May-17	14:49:40	3.43	3.42	3.43
30-May-17	14:49:45	3.42	3.42	3.42
30-May-17	14:49:50	3.42	3.42	3.42
30-May-17	14:49:55	3.42	3.41	3.42	./...
30-May-17	14:50:00	3.41	3.41	3.41
30-May-17	14:50:05	3.41	3.4	3.41
30-May-17	14:50:10	3.41	3.4	3.4
30-May-17	14:50:15	3.47	3.41	3.44
30-May-17	14:50:20	3.57	3.49	3.53
30-May-17	14:50:25	3.66	3.59	3.63
30-May-17	14:50:30	3.7	3.68	3.7
30-May-17	14:50:35	3.71	3.7	3.7
30-May-17	14:50:40	3.7	3.69	3.7

Attachment 3 - InfraRan 92 Raw

<u>DATE</u>	<u>TIME</u>	<u>MAX</u>	<u>MIN</u>	<u>AVG</u>	<u>FLAGS</u>
30-May-17	14:50:45	3.69	3.68	3.69
30-May-17	14:50:50	3.68	3.68	3.68
30-May-17	14:50:55	3.68	3.67	3.68
30-May-17	14:51:00	3.67	3.67	3.67
30-May-17	14:51:05	3.67	3.67	3.67
30-May-17	14:51:10	3.67	3.66	3.66
30-May-17	14:51:15	3.66	3.66	3.66
30-May-17	14:51:20	3.66	3.65	3.66
30-May-17	14:51:25	3.66	3.65	3.65
30-May-17	14:51:30	3.66	3.66	3.66
30-May-17	14:51:35	3.66	3.65	3.65
30-May-17	14:51:40	3.65	3.65	3.65
30-May-17	14:51:45	3.65	3.64	3.65
30-May-17	14:51:50	3.64	3.64	3.64
30-May-17	14:51:55	3.64	3.64	3.64
30-May-17	14:52:00	3.64	3.63	3.64
30-May-17	14:52:05	3.63	3.63	3.63
30-May-17	14:52:10	3.63	3.63	3.63
30-May-17	14:52:15	3.62	3.62	3.62
30-May-17	14:52:20	3.62	3.62	3.62
30-May-17	14:52:25	3.68	3.63	3.65
30-May-17	14:52:30	3.76	3.69	3.73
30-May-17	14:52:35	3.85	3.78	3.81
30-May-17	14:52:40	3.89	3.87	3.88
30-May-17	14:52:45	3.89	3.89	3.89
30-May-17	14:52:50	3.89	3.88	3.89
30-May-17	14:52:55	3.88	3.87	3.88
30-May-17	14:53:00	3.87	3.87	3.87
30-May-17	14:53:05	3.87	3.86	3.87
30-May-17	14:53:10	3.86	3.86	3.86
30-May-17	14:53:15	3.86	3.85	3.86
30-May-17	14:53:20	3.85	3.85	3.85
30-May-17	14:53:25	3.85	3.84	3.85
30-May-17	14:53:30	3.84	3.84	3.84
30-May-17	14:53:35	3.84	3.84	3.84
30-May-17	14:53:40	3.83	3.83	3.83
30-May-17	14:53:45	3.83	3.83	3.83
30-May-17	14:53:50	3.83	3.82	3.82
30-May-17	14:53:55	3.82	3.82	3.82
30-May-17	14:54:00	3.82	3.82	3.82
30-May-17	14:54:05	3.82	3.81	3.82
30-May-17	14:54:10	3.83	3.82	3.82
30-May-17	14:54:15	3.88	3.83	3.86
30-May-17	14:54:20	3.96	3.9	3.93
30-May-17	14:54:25	4.04	3.97	4.01
30-May-17	14:54:30	4.07	4.05	4.06

<u>DATE</u>	<u>TIME</u>	<u>MAX</u>	<u>MIN</u>	<u>AVG</u>	<u>FLAGS</u>
30-May-17	14:54:35	4.08	4.07	4.08
30-May-17	14:54:40	4.08	4.08	4.08
30-May-17	14:54:45	4.08	4.08	4.08
30-May-17	14:54:50	4.08	4.07	4.07
30-May-17	14:54:55	4.07	4.07	4.07
30-May-17	14:55:00	4.07	4.07	4.07
30-May-17	14:55:05	4.07	4.07	4.07
30-May-17	14:55:10	4.07	4.06	4.07
30-May-17	14:55:15	4.06	4.06	4.06
30-May-17	14:55:20	4.06	4.05	4.06
30-May-17	14:55:25	4.05	4.05	4.05
30-May-17	14:55:30	4.05	4.05	4.05
30-May-17	14:55:35	4.05	4.04	4.04
30-May-17	14:55:40	4.04	4.04	4.04
30-May-17	14:55:45	4.04	4.04	4.04
30-May-17	14:55:50	4.04	4.03	4.03
30-May-17	14:55:55	4.03	4.03	4.03
30-May-17	14:56:00	4.03	4.03	4.03
30-May-17	14:56:05	4.03	4.02	4.03
30-May-17	14:56:10	4.03	4.02	4.02
30-May-17	14:56:15	4.11	4.05	4.08
30-May-17	14:56:20	4.21	4.13	4.17
30-May-17	14:56:25	4.32	4.23	4.28
30-May-17	14:56:30	4.35	4.33	4.34
30-May-17	14:56:35	4.35	4.34	4.35
30-May-17	14:56:40	4.34	4.34	4.34
30-May-17	14:56:45	4.34	4.33	4.34
30-May-17	14:56:50	4.33	4.33	4.33
30-May-17	14:56:55	4.33	4.32	4.32
30-May-17	14:57:00	4.31	4.31	4.31
30-May-17	14:57:05	4.31	4.3	4.31
30-May-17	14:57:10	4.3	4.3	4.3
30-May-17	14:57:15	4.3	4.3	4.3
30-May-17	14:57:20	4.3	4.29	4.3
30-May-17	14:57:25	4.29	4.29	4.29
30-May-17	14:57:30	4.29	4.29	4.29
30-May-17	14:57:35	4.29	4.28	4.28
30-May-17	14:57:40	4.28	4.28	4.28
30-May-17	14:57:45	4.28	4.28	4.28
30-May-17	14:57:50	4.28	4.27	4.27
30-May-17	14:57:55	4.27	4.27	4.27
30-May-17	14:58:00	4.26	4.26	4.26
30-May-17	14:58:05	4.26	4.26	4.26
30-May-17	14:58:10	4.27	4.26	4.26
30-May-17	14:58:15	4.33	4.28	4.3
30-May-17	14:58:20	4.39	4.34	4.36

<u>DATE</u>	<u>TIME</u>	<u>MAX</u>	<u>MIN</u>	<u>AVG</u>	<u>FLAGS</u>
30-May-17	14:58:25	4.45	4.4	4.43
30-May-17	14:58:30	4.46	4.45	4.46
30-May-17	14:58:35	4.46	4.46	4.46
30-May-17	14:58:40	4.46	4.46	4.46
30-May-17	14:58:45	4.46	4.46	4.46
30-May-17	14:58:50	4.47	4.46	4.47
30-May-17	14:58:55	4.48	4.47	4.47
30-May-17	14:59:00	4.49	4.48	4.48
30-May-17	14:59:05	4.5	4.49	4.49
30-May-17	14:59:10	4.51	4.5	4.51
30-May-17	14:59:15	4.51	4.51	4.51
30-May-17	14:59:20	4.52	4.52	4.52
30-May-17	14:59:25	4.52	4.52	4.52
30-May-17	14:59:30	4.52	4.52	4.52
30-May-17	14:59:35	4.52	4.52	4.52
30-May-17	14:59:40	4.52	4.52	4.52
30-May-17	14:59:45	4.52	4.52	4.52
30-May-17	14:59:50	4.52	4.51	4.51
30-May-17	14:59:55	4.51	4.51	4.51
30-May-17	15:00:00	4.51	4.5	4.51
30-May-17	15:00:05	4.51	4.51	4.51
30-May-17	15:00:10	4.51	4.5	4.5
30-May-17	15:00:15	4.53	4.51	4.52
30-May-17	15:00:20	4.57	4.54	4.56
30-May-17	15:00:25	4.62	4.58	4.6
30-May-17	15:00:30	4.65	4.63	4.64
30-May-17	15:00:35	4.65	4.65	4.65
30-May-17	15:00:40	4.65	4.65	4.65
30-May-17	15:00:45	4.65	4.64	4.64
30-May-17	15:00:50	4.64	4.63	4.64
30-May-17	15:00:55	4.63	4.63	4.63
30-May-17	15:01:00	4.63	4.63	4.63
30-May-17	15:01:05	4.63	4.63	4.63
30-May-17	15:01:10	4.63	4.62	4.63
30-May-17	15:01:15	4.62	4.61	4.62
30-May-17	15:01:20	4.61	4.61	4.61
30-May-17	15:01:25	4.61	4.6	4.6
30-May-17	15:01:30	4.6	4.6	4.6
30-May-17	15:01:35	4.6	4.59	4.59
30-May-17	15:01:40	4.59	4.59	4.59
30-May-17	15:01:45	4.59	4.59	4.59
30-May-17	15:01:50	4.59	4.59	4.59
30-May-17	15:01:55	4.59	4.58	4.58
30-May-17	15:02:00	4.58	4.58	4.58
30-May-17	15:02:05	4.57	4.57	4.57
30-May-17	15:02:10	4.57	4.56	4.57

<u>DATE</u>	<u>TIME</u>	<u>MAX</u>	<u>MIN</u>	<u>AVG</u>	<u>FLAGS</u>
30-May-17	15:02:15	4.65	4.58	4.61
30-May-17	15:02:20	4.75	4.67	4.71
30-May-17	15:02:25	4.84	4.77	4.8
30-May-17	15:02:30	4.87	4.85	4.86
30-May-17	15:02:35	4.87	4.87	4.87
30-May-17	15:02:40	4.87	4.86	4.87
30-May-17	15:02:45	4.86	4.86	4.86
30-May-17	15:02:50	4.86	4.85	4.85
30-May-17	15:02:55	4.85	4.84	4.85
30-May-17	15:03:00	4.84	4.84	4.84
30-May-17	15:03:05	4.84	4.84	4.84
30-May-17	15:03:10	4.85	4.84	4.84
30-May-17	15:03:15	4.84	4.83	4.83
30-May-17	15:03:20	4.83	4.82	4.83
30-May-17	15:03:25	4.82	4.82	4.82
30-May-17	15:03:30	4.82	4.82	4.82
30-May-17	15:03:35	4.82	4.81	4.82
30-May-17	15:03:40	4.82	4.81	4.81
30-May-17	15:03:45	4.81	4.81	4.81
30-May-17	15:03:50	4.81	4.8	4.8
30-May-17	15:03:55	4.8	4.8	4.8
30-May-17	15:04:00	4.8	4.8	4.8
30-May-17	15:04:05	4.8	4.79	4.79
30-May-17	15:04:10	4.79	4.78	4.79
30-May-17	15:04:15	4.83	4.79	4.81
30-May-17	15:04:20	4.91	4.85	4.88
30-May-17	15:04:25	5	4.93	4.97	RHL..
30-May-17	15:04:30	5.05	5.02	5.04	RHL..
30-May-17	15:04:35	5.07	5.06	5.06	RHL..
30-May-17	15:04:40	5.07	5.07	5.07	RHL..
30-May-17	15:04:45	5.07	5.06	5.07	RHL..
30-May-17	15:04:50	5.06	5.06	5.06	RHL..
30-May-17	15:04:55	5.06	5.06	5.06	RHL..
30-May-17	15:05:00	5.05	5.05	5.05	RHL..
30-May-17	15:05:05	5.05	5.04	5.04	RHL..
30-May-17	15:05:10	5.04	5.03	5.04	RHL..
30-May-17	15:05:15	5.03	5.03	5.03	RHL..
30-May-17	15:05:20	5.03	5.03	5.03	RHL..
30-May-17	15:05:25	5.03	5.02	5.02	RHL..
30-May-17	15:05:30	5.02	5.02	5.02	RHL..
30-May-17	15:05:35	5.02	5.01	5.01	RHL..
30-May-17	15:05:40	5.01	5	5.01	RHL..
30-May-17	15:05:45	5.01	5	5.01	RHL..
30-May-17	15:05:50	5	5	5	RHL..
30-May-17	15:05:55	5	5	5
30-May-17	15:06:00	5	4.99	5

<u>DATE</u>	<u>TIME</u>	<u>MAX</u>	<u>MIN</u>	<u>AVG</u>	<u>FLAGS</u>
30-May-17	15:06:05	4.99	4.99	4.99
30-May-17	15:06:10	4.99	4.98	4.98
30-May-17	15:06:15	4.98	4.98	4.98
30-May-17	15:06:20	4.98	4.97	4.98
30-May-17	15:06:25	4.97	4.96	4.97
30-May-17	15:06:30	4.96	4.93	4.94
30-May-17	15:06:35	4.92	4.85	4.89
30-May-17	15:06:40	4.83	4.71	4.77
30-May-17	15:06:45	4.68	4.55	4.62
30-May-17	15:06:50	4.51	4.35	4.43
30-May-17	15:06:55	4.3	4.09	4.2
30-May-17	15:07:00	4.04	3.77	3.91
30-May-17	15:07:05	3.69	3.35	3.53
30-May-17	15:07:10	3.26	2.92	3.09
30-May-17	15:07:15	2.83	2.51	2.67
30-May-17	15:07:20	2.43	2.12	2.28
30-May-17	15:07:25	2.05	1.8	1.92
30-May-17	15:07:30	1.74	1.52	1.62
30-May-17	15:07:35	1.47	1.31	1.38
30-May-17	15:07:40	1.27	1.16	1.22
30-May-17	15:07:45	1.13	1.03	1.08
30-May-17	15:07:50	1	0.88	0.94
30-May-17	15:07:55	0.86	0.74	0.8
30-May-17	15:08:00	0.71	0.6	0.66
30-May-17	15:08:05	0.58	0.5	0.54
30-May-17	15:08:10	0.48	0.43	0.45
30-May-17	15:08:15	0.41	0.37	0.39
30-May-17	15:08:20	0.36	0.32	0.34
30-May-17	15:08:25	0.31	0.27	0.29
30-May-17	15:08:30	0.26	0.23	0.24
30-May-17	15:08:35	0.22	0.2	0.21
30-May-17	15:08:40	0.19	0.17	0.18
30-May-17	15:08:45	0.16	0.15	0.16
30-May-17	15:08:50	0.14	0.12	0.13
30-May-17	15:08:55	0.12	0.11	0.11
30-May-17	15:09:00	0.1	0.09	0.09
30-May-17	15:09:05	0.09	0.08	0.08
30-May-17	15:09:10	0.07	0.07	0.07
30-May-17	15:09:15	0.06	0.06	0.06
30-May-17	15:09:20	0.05	0.05	0.05
30-May-17	15:09:25	0.04	0.04	0.04
30-May-17	15:09:30	0.04	0.03	0.03
30-May-17	15:09:35	0.03	0.03	0.03
30-May-17	15:09:40	0.02	0.02	0.02
30-May-17	15:09:45	0.02	0.02	0.02
30-May-17	15:09:50	0.02	0.02	0.02

<u>DATE</u>	<u>TIME</u>	<u>MAX</u>	<u>MIN</u>	<u>AVG</u>	<u>FLAGS</u>
30-May-17	15:09:55	0.02	0.02	0.02
30-May-17	15:10:00	0.02	0.02	0.02
30-May-17	15:10:05	0.02	0.02	0.02
30-May-17	15:10:10	0.02	0.02	0.02
30-May-17	15:10:15	0.02	0.02	0.02
30-May-17	15:10:20	0.02	0.02	0.02
30-May-17	15:10:25	0.02	0.02	0.02
30-May-17	15:10:30	0.02	0.02	0.02
30-May-17	15:10:35	0.02	0.02	0.02
30-May-17	15:10:40	0.03	0.02	0.02
30-May-17	15:10:45	0.03	0.02	0.03
30-May-17	15:10:50	0.03	0.03	0.03
30-May-17	15:10:55	0.03	0.03	0.03
30-May-17	15:11:00	0.03	0.03	0.03
30-May-17	15:11:05	0.03	0.03	0.03
30-May-17	15:11:10	0.03	0.03	0.03
30-May-17	15:11:15	0.16	0.03	0.08
30-May-17	15:11:20	0.61	0.23	0.41
30-May-17	15:11:25	1.16	0.71	0.93
30-May-17	15:11:30	1.68	1.27	1.49
30-May-17	15:11:35	1.8	1.73	1.77
30-May-17	15:11:40	1.8	1.8	1.8
30-May-17	15:11:45	1.8	1.78	1.79
30-May-17	15:11:50	1.77	1.75	1.76
30-May-17	15:11:55	1.75	1.73	1.74
30-May-17	15:12:00	1.73	1.72	1.73
30-May-17	15:12:05	1.72	1.72	1.72
30-May-17	15:12:10	1.71	1.71	1.71
30-May-17	15:12:15	1.71	1.7	1.7
30-May-17	15:12:20	1.7	1.7	1.7
30-May-17	15:12:25	1.7	1.7	1.7
30-May-17	15:12:30	1.7	1.69	1.7
30-May-17	15:12:35	1.69	1.69	1.69
30-May-17	15:12:40	1.69	1.69	1.69
30-May-17	15:12:45	1.69	1.69	1.69
30-May-17	15:12:50	1.69	1.69	1.69
30-May-17	15:12:55	1.69	1.69	1.69
30-May-17	15:13:00	1.69	1.69	1.69
30-May-17	15:13:05	1.68	1.68	1.68
30-May-17	15:13:10	1.68	1.68	1.68
30-May-17	15:13:15	1.68	1.68	1.68
30-May-17	15:13:20	1.68	1.68	1.68
30-May-17	15:13:25	1.68	1.68	1.68
30-May-17	15:13:30	1.68	1.68	1.68
30-May-17	15:13:35	1.68	1.67	1.67
30-May-17	15:13:40	1.68	1.67	1.67

<u>DATE</u>	<u>TIME</u>	<u>MAX</u>	<u>MIN</u>	<u>AVG</u>	<u>FLAGS</u>
30-May-17	15:13:45	1.67	1.67	1.67
30-May-17	15:13:50	1.67	1.67	1.67
30-May-17	15:13:55	1.67	1.67	1.67
30-May-17	15:14:00	1.67	1.67	1.67
30-May-17	15:14:05	1.67	1.67	1.67
30-May-17	15:14:10	1.67	1.67	1.67
30-May-17	15:14:15	1.67	1.67	1.67
30-May-17	15:14:20	1.66	1.66	1.66
30-May-17	15:14:25	1.66	1.66	1.66
30-May-17	15:14:30	1.66	1.65	1.65
30-May-17	15:14:35	1.65	1.65	1.65
30-May-17	15:14:40	1.65	1.65	1.65
30-May-17	15:14:45	1.65	1.65	1.65
30-May-17	15:14:50	1.65	1.65	1.65
30-May-17	15:14:55	1.65	1.65	1.65
30-May-17	15:15:00	1.65	1.65	1.65
30-May-17	15:15:05	1.65	1.64	1.65
30-May-17	15:15:10	1.64	1.64	1.64
30-May-17	15:15:15	1.64	1.64	1.64
30-May-17	15:15:20	1.64	1.64	1.64
30-May-17	15:15:25	1.64	1.64	1.64
30-May-17	15:15:30	1.64	1.64	1.64
30-May-17	15:15:35	1.65	1.64	1.64
30-May-17	15:15:40	1.66	1.65	1.65
30-May-17	15:15:45	1.67	1.66	1.66
30-May-17	15:15:50	1.68	1.67	1.68
30-May-17	15:15:55	1.69	1.68	1.69
30-May-17	15:16:00	1.71	1.7	1.7
30-May-17	15:16:05	1.72	1.71	1.72
30-May-17	15:16:10	1.73	1.73	1.73
30-May-17	15:16:15	1.74	1.74	1.74
30-May-17	15:16:20	1.75	1.74	1.75
30-May-17	15:16:25	1.75	1.75	1.75
30-May-17	15:16:30	1.76	1.75	1.75
30-May-17	15:16:35	1.76	1.76	1.76
30-May-17	15:16:40	1.76	1.76	1.76
30-May-17	15:16:45	1.77	1.76	1.77
30-May-17	15:16:50	1.77	1.77	1.77
30-May-17	15:16:55	1.77	1.77	1.77
30-May-17	15:17:00	1.77	1.77	1.77
30-May-17	15:17:05	1.77	1.76	1.76
30-May-17	15:17:10	1.76	1.76	1.76
30-May-17	15:17:15	1.77	1.76	1.76
30-May-17	15:17:20	1.97	1.78	1.87
30-May-17	15:17:25	2.32	2.03	2.17
30-May-17	15:17:30	2.7	2.39	2.54

<u>DATE</u>	<u>TIME</u>	<u>MAX</u>	<u>MIN</u>	<u>AVG</u>	<u>FLAGS</u>
30-May-17	15:17:35	2.92	2.77	2.86
30-May-17	15:17:40	2.94	2.93	2.94
30-May-17	15:17:45	2.94	2.93	2.93
30-May-17	15:17:50	2.92	2.91	2.92
30-May-17	15:17:55	2.91	2.9	2.9
30-May-17	15:18:00	2.89	2.88	2.89
30-May-17	15:18:05	2.88	2.88	2.88
30-May-17	15:18:10	2.87	2.87	2.87
30-May-17	15:18:15	2.87	2.87	2.87
30-May-17	15:18:20	2.87	2.86	2.86
30-May-17	15:18:25	2.86	2.86	2.86
30-May-17	15:18:30	2.86	2.86	2.86
30-May-17	15:18:35	2.86	2.85	2.86
30-May-17	15:18:40	2.85	2.85	2.85
30-May-17	15:18:45	2.85	2.85	2.85
30-May-17	15:18:50	2.85	2.84	2.84
30-May-17	15:18:55	2.84	2.84	2.84
30-May-17	15:19:00	2.84	2.84	2.84
30-May-17	15:19:05	2.84	2.84	2.84
30-May-17	15:19:10	2.84	2.83	2.84
30-May-17	15:19:15	2.83	2.83	2.83
30-May-17	15:19:20	2.83	2.83	2.83
30-May-17	15:19:25	2.83	2.82	2.82
30-May-17	15:19:30	2.82	2.82	2.82
30-May-17	15:19:35	2.82	2.82	2.82
30-May-17	15:19:40	2.82	2.82	2.82
30-May-17	15:19:45	2.82	2.82	2.82
30-May-17	15:19:50	2.82	2.82	2.82
30-May-17	15:19:55	2.82	2.81	2.81
30-May-17	15:20:00	2.81	2.81	2.81
30-May-17	15:20:05	2.81	2.81	2.81
30-May-17	15:20:10	2.81	2.81	2.81
30-May-17	15:20:15	3.02	2.82	2.91
30-May-17	15:20:20	3.39	3.08	3.24
30-May-17	15:20:25	3.82	3.48	3.65
30-May-17	15:20:30	4.09	3.9	4.01
30-May-17	15:20:35	4.12	4.11	4.12
30-May-17	15:20:40	4.12	4.1	4.11
30-May-17	15:20:45	4.1	4.09	4.1
30-May-17	15:20:50	4.08	4.08	4.08
30-May-17	15:20:55	4.07	4.07	4.07
30-May-17	15:21:00	4.07	4.06	4.06
30-May-17	15:21:05	4.06	4.05	4.06
30-May-17	15:21:10	4.05	4.04	4.05
30-May-17	15:21:15	4.04	4.04	4.04
30-May-17	15:21:20	4.04	4.04	4.04

Attachment 3 - InfraRan 92 Raw

<u>DATE</u>	<u>TIME</u>	<u>MAX</u>	<u>MIN</u>	<u>AVG</u>	<u>FLAGS</u>
30-May-17	15:21:25	4.04	4.04	4.04
30-May-17	15:21:30	4.04	4.03	4.03
30-May-17	15:21:35	4.03	4.03	4.03
30-May-17	15:21:40	4.03	4.02	4.03
30-May-17	15:21:45	4.02	4.02	4.02
30-May-17	15:21:50	4.02	4.02	4.02
30-May-17	15:21:55	4.01	4.01	4.01
30-May-17	15:22:00	4.01	4	4.01
30-May-17	15:22:05	4	4	4
30-May-17	15:22:10	4	4	4
30-May-17	15:22:15	4	4	4
30-May-17	15:22:20	4	4	4
30-May-17	15:22:25	3.99	3.99	3.99
30-May-17	15:22:30	3.99	3.99	3.99
30-May-17	15:22:35	3.99	3.98	3.99
30-May-17	15:22:40	3.98	3.98	3.98
30-May-17	15:22:45	3.98	3.97	3.98
30-May-17	15:22:50	3.97	3.97	3.97
30-May-17	15:22:55	3.96	3.96	3.96
30-May-17	15:23:00	3.96	3.96	3.96
30-May-17	15:23:05	3.96	3.96	3.96
30-May-17	15:23:10	3.96	3.96	3.96
30-May-17	15:23:15	3.96	3.96	3.96
30-May-17	15:23:20	3.96	3.95	3.95
30-May-17	15:23:25	3.95	3.95	3.95
30-May-17	15:23:30	3.95	3.94	3.95
30-May-17	15:23:35	3.95	3.94	3.94
30-May-17	15:23:40	3.95	3.94	3.94
30-May-17	15:23:45	3.94	3.93	3.93
30-May-17	15:23:50	3.93	3.93	3.93
30-May-17	15:23:55	3.92	3.92	3.92
30-May-17	15:24:00	3.92	3.91	3.92
30-May-17	15:24:05	3.89	3.78	3.84
30-May-17	15:24:10	3.75	3.57	3.67
30-May-17	15:24:15	3.51	3.25	3.38
30-May-17	15:24:20	3.19	3	3.09
30-May-17	15:24:25	2.96	2.78	2.87
30-May-17	15:24:30	2.75	2.62	2.68
30-May-17	15:24:35	2.58	2.37	2.48
30-May-17	15:24:40	2.31	2.04	2.17

Time	Avg (ppm)	Injection (mL)	Sum Injection (mL)	Notes
14:09:45	-0.01		0	Start
14:09:50	-0.01		0	
14:09:55	-0.01		0	
14:10:00	-0.01		0	
14:10:05	-0.01		0	
14:10:10	-0.01		0	
14:10:15	-0.01		0	
14:10:20	-0.01		0	
14:10:25	-0.01		0	
14:10:30	-0.01		0	
14:10:35	-0.02		0	
14:10:40	-0.02		0	
14:10:45	-0.02		0	
14:10:50	-0.02		0	
14:10:55	-0.01		0	
14:11:00	-0.01		0	
14:11:05	-0.02		0	
14:11:10	-0.02		0	
14:11:15	-0.02		0	
14:11:20	-0.02		0	
14:11:25	-0.02		0	
14:11:30	-0.02		0	
14:11:35	-0.02		0	
14:11:40	-0.02		0	
14:11:45	-0.02		0	
14:11:50	-0.02		0	
14:11:55	-0.02		0	
14:12:00	-0.02		0	Doors shut
14:12:05	-0.02		0	
14:12:10	-0.02		0	
14:12:15	-0.02		0	
14:12:20	-0.02		0	
14:12:25	-0.02		0	
14:12:30	-0.02		0	
14:12:35	-0.02		0	
14:12:40	-0.02		0	
14:12:45	-0.02		0	
14:12:50	-0.02		0	
14:12:55	-0.02		0	
14:13:00	-0.02		0	
14:13:05	-0.02		0	
14:13:10	-0.02		0	
14:13:15	-0.02		0	
14:13:20	-0.02		0	
14:13:25	-0.02		0	
14:13:30	-0.03		0	
14:13:35	-0.03		0	
14:13:40	-0.03		0	
14:13:45	-0.02		0	
14:13:50	-0.02		0	
14:13:55	-0.02		0	
14:14:00	-0.03		0	
14:14:05	-0.03		0	
14:14:10	-0.03		0	
14:14:15	-0.03		0	
14:14:20	-0.03		0	
14:14:25	-0.03		0	
14:14:30	-0.03		0	
14:14:35	-0.03		0	
14:14:40	-0.03		0	
14:14:45	-0.03		0	
14:14:50	-0.03		0	
14:14:55	-0.03		0	
14:15:00	-0.03		0	
14:15:05	-0.03		0	
14:15:10	-0.03		0	
14:15:15	-0.03		0	

Time	Avg (ppm)	Injection (mL)	Sum Injection (mL)	Notes
14:15:20	-0.03		0	
14:15:25	-0.03		0	
14:15:30	-0.03		0	
14:15:35	-0.03		0	
14:15:40	-0.03		0	
14:15:45	-0.03		0	
14:15:50	-0.03		0	
14:15:55	-0.03		0	
14:16:00	-0.03		0	
14:16:05	-0.03		0	
14:16:10	-0.03		0	
14:16:15	-0.03		0	
14:16:20	-0.03		0	
14:16:25	-0.03		0	
14:16:30	-0.03		0	
14:16:35	-0.03		0	
14:16:40	-0.03		0	
14:16:45	-0.03		0	
14:16:50	-0.03		0	
14:16:55	-0.04		0	
14:17:00	-0.04		0	
14:17:05	-0.04		0	
14:17:10	-0.04		0	
14:17:15	-0.04		0	
14:17:20	-0.04		0	
14:17:25	-0.04		0	
14:17:30	-0.04		0	
14:17:35	-0.04		0	
14:17:40	-0.04		0	
14:17:45	-0.04		0	
14:17:50	-0.04		0	
14:17:55	-0.04		0	
14:18:00	-0.04		0	
14:18:05	-0.04		0	
14:18:10	-0.04		0	
14:18:15	-0.04		0	
14:18:20	-0.04		0	
14:18:25	-0.04		0	
14:18:30	-0.04		0	
14:18:35	-0.04		0	
14:18:40	-0.04		0	
14:18:45	-0.04		0	
14:18:50	-0.04		0	
14:18:55	-0.04		0	
14:19:00	-0.04		0	
14:19:05	-0.04		0	
14:19:10	-0.04		0	
14:19:15	-0.04		0	
14:19:20	0	12	12	Injection Start
14:19:25	0.16		12	
14:19:30	0.34		12	
14:19:35	0.49		12	
14:19:40	0.52		12	
14:19:45	0.5		12	
14:19:50	0.49		12	
14:19:55	0.49		12	
14:20:00	0.52		12	
14:20:05	0.56		12	
14:20:10	0.59		12	
14:20:15	0.59		12	
14:20:20	0.58		12	
14:20:25	0.58		12	
14:20:30	0.57		12	
14:20:35	0.57		12	
14:20:40	0.57		12	
14:20:45	0.57		12	
14:20:50	0.57		12	
14:20:55	0.56		12	
14:21:00	0.56		12	
14:21:05	0.56		12	
14:21:10	0.56		12	
14:21:15	0.56		12	
14:21:20	0.56		12	
14:21:25	0.56		12	
14:21:30	0.55		12	
14:21:35	0.56		12	

Time	Avg (ppm)	Injection (mL)	Sum Injection (mL)	Notes
14:21:40	0.55		12	
14:21:45	0.55		12	
14:21:50	0.55		12	
14:21:55	0.55		12	
14:22:00	0.55	5	17	
14:22:05	0.55		17	
14:22:10	0.55		17	
14:22:15	0.62		17	
14:22:20	0.72		17	
14:22:25	0.81		17	
14:22:30	0.85		17	
14:22:35	0.83		17	
14:22:40	0.81		17	
14:22:45	0.8		17	
14:22:50	0.8		17	
14:22:55	0.79		17	
14:23:00	0.79		17	
14:23:05	0.79		17	
14:23:10	0.79		17	
14:23:15	0.79		17	
14:23:20	0.79		17	
14:23:25	0.79		17	
14:23:30	0.79		17	
14:23:35	0.79		17	
14:23:40	0.78		17	
14:23:45	0.78		17	
14:23:50	0.78		17	
14:23:55	0.78		17	
14:24:00	0.78		17	
14:24:05	0.78		17	
14:24:10	0.78		17	
14:24:15	0.78		17	
14:24:20	0.78		17	
14:24:25	0.78		17	
14:24:30	0.77		17	
14:24:35	0.77		17	
14:24:40	0.77		17	
14:24:45	0.77		17	
14:24:50	0.77		17	
14:24:55	0.77		17	
14:25:00	0.77	5	22	
14:25:05	0.77		22	
14:25:10	0.77		22	
14:25:15	0.86		22	
14:25:20	0.98		22	
14:25:25	1.08		22	
14:25:30	1.12		22	
14:25:35	1.1		22	
14:25:40	1.08		22	
14:25:45	1.07		22	
14:25:50	1.06		22	
14:25:55	1.06		22	
14:26:00	1.05		22	
14:26:05	1.05		22	
14:26:10	1.05		22	
14:26:15	1.04		22	
14:26:20	1.04		22	
14:26:25	1.04		22	
14:26:30	1.04		22	
14:26:35	1.03		22	
14:26:40	1.04		22	
14:26:45	1.03		22	
14:26:50	1.04		22	
14:26:55	1.04		22	
14:27:00	1.04	5	27	
14:27:05	1.03		27	
14:27:10	1.03		27	
14:27:15	1.1		27	
14:27:20	1.2		27	
14:27:25	1.31		27	
14:27:30	1.35		27	
14:27:35	1.34		27	
14:27:40	1.32		27	
14:27:45	1.31		27	
14:27:50	1.31		27	
14:27:55	1.3		27	

Time	Avg (ppm)	Injection (mL)	Sum Injection (mL)	Notes
14:28:00	1.3		27	
14:28:05	1.29		27	
14:28:10	1.29		27	
14:28:15	1.29		27	
14:28:20	1.29		27	
14:28:25	1.29		27	
14:28:30	1.29		27	
14:28:35	1.28		27	
14:28:40	1.28		27	
14:28:45	1.28		27	
14:28:50	1.28		27	
14:28:55	1.28		27	
14:29:00	1.28	5	32	
14:29:05	1.28		32	
14:29:10	1.28		32	
14:29:15	1.33		32	
14:29:20	1.42		32	
14:29:25	1.51		32	
14:29:30	1.57		32	
14:29:35	1.56		32	
14:29:40	1.55		32	
14:29:45	1.55		32	
14:29:50	1.54		32	
14:29:55	1.54		32	
14:30:00	1.54		32	
14:30:05	1.53		32	
14:30:10	1.53		32	
14:30:15	1.53		32	
14:30:20	1.53		32	
14:30:25	1.53		32	
14:30:30	1.53		32	
14:30:35	1.52		32	
14:30:40	1.52		32	
14:30:45	1.52		32	
14:30:50	1.52		32	
14:30:55	1.51		32	
14:31:00	1.51	5	37	
14:31:05	1.51		37	
14:31:10	1.52		37	
14:31:15	1.61		37	
14:31:20	1.72		37	
14:31:25	1.82		37	
14:31:30	1.84		37	
14:31:35	1.82		37	
14:31:40	1.81		37	
14:31:45	1.8		37	
14:31:50	1.79		37	
14:31:55	1.78		37	
14:32:00	1.78		37	
14:32:05	1.77		37	
14:32:10	1.77		37	
14:32:15	1.77		37	
14:32:20	1.77		37	
14:32:25	1.77		37	
14:32:30	1.77		37	
14:32:35	1.77		37	
14:32:40	1.76		37	
14:32:45	1.76		37	
14:32:50	1.76		37	
14:32:55	1.76		37	
14:33:00	1.76	5	42	
14:33:05	1.75		42	
14:33:10	1.76		42	
14:33:15	1.83		42	
14:33:20	1.94		42	
14:33:25	2.04		42	
14:33:30	2.08		42	
14:33:35	2.06		42	
14:33:40	2.05		42	
14:33:45	2.04		42	
14:33:50	2.03		42	
14:33:55	2.03		42	
14:34:00	2.02		42	
14:34:05	2.02		42	
14:34:10	2.02		42	
14:34:15	2.02		42	

Time	Avg (ppm)	Injection (mL)	Sum Injection (mL)	Notes
14:34:20	2.02		42	
14:34:25	2.01		42	
14:34:30	2.01		42	
14:34:35	2.01		42	
14:34:40	2		42	
14:34:45	2		42	
14:34:50	2		42	
14:34:55	2		42	
14:35:00	2	5	47	
14:35:05	2		47	
14:35:10	2.01		47	
14:35:15	2.11		47	
14:35:20	2.21		47	
14:35:25	2.29		47	
14:35:30	2.29		47	
14:35:35	2.27		47	
14:35:40	2.25		47	
14:35:45	2.24		47	
14:35:50	2.23		47	
14:35:55	2.23		47	
14:36:00	2.23		47	
14:36:05	2.23		47	
14:36:10	2.22		47	
14:36:15	2.22		47	
14:36:20	2.22		47	
14:36:25	2.22		47	
14:36:30	2.22		47	
14:36:35	2.22		47	
14:36:40	2.21		47	
14:36:45	2.21		47	
14:36:50	2.21		47	
14:36:55	2.21		47	
14:37:00	2.2	5	52	
14:37:05	2.2		52	
14:37:10	2.21		52	
14:37:15	2.29		52	
14:37:20	2.4		52	
14:37:25	2.49		52	
14:37:30	2.51		52	
14:37:35	2.49		52	
14:37:40	2.47		52	
14:37:45	2.46		52	
14:37:50	2.45		52	
14:37:55	2.45		52	
14:38:00	2.44		52	
14:38:05	2.44		52	
14:38:10	2.44		52	
14:38:15	2.44		52	
14:38:20	2.43		52	
14:38:25	2.43		52	
14:38:30	2.43		52	
14:38:35	2.42		52	
14:38:40	2.42		52	
14:38:45	2.42		52	
14:38:50	2.41		52	
14:38:55	2.41		52	
14:39:00	2.41	5	57	
14:39:05	2.41		57	
14:39:10	2.41		57	
14:39:15	2.45		57	
14:39:20	2.53		57	
14:39:25	2.61		57	
14:39:30	2.65		57	
14:39:35	2.65		57	
14:39:40	2.65		57	
14:39:45	2.65		57	
14:39:50	2.66		57	
14:39:55	2.67		57	
14:40:00	2.68		57	
14:40:05	2.69		57	
14:40:10	2.7		57	
14:40:15	2.71		57	
14:40:20	2.71		57	
14:40:25	2.72		57	
14:40:30	2.72		57	
14:40:35	2.72		57	

Time	Avg (ppm)	Injection (mL)	Sum Injection (mL)	Notes
14:40:40	2.72		57	
14:40:45	2.73		57	
14:40:50	2.73		57	
14:40:55	2.72		57	
14:41:00	2.72		57	
14:41:05	2.72		57	
14:41:10	2.72		57	
14:41:15	2.72		57	
14:41:20	2.72		57	
14:41:25	2.72		57	
14:41:30	2.72		57	
14:41:35	2.72		57	
14:41:40	2.71		57	
14:41:45	2.71		57	
14:41:50	2.7		57	
14:41:55	2.7		57	
14:42:00	2.7	4	61	New Syringe
14:42:05	2.7		61	
14:42:10	2.7		61	
14:42:15	2.71		61	
14:42:20	2.73		61	
14:42:25	2.77		61	
14:42:30	2.79		61	
14:42:35	2.8		61	
14:42:40	2.79		61	
14:42:45	2.79		61	
14:42:50	2.79		61	
14:42:55	2.79		61	
14:43:00	2.78		61	
14:43:05	2.78		61	
14:43:10	2.78		61	
14:43:15	2.78		61	
14:43:20	2.77		61	
14:43:25	2.77		61	
14:43:30	2.76		61	
14:43:35	2.76		61	
14:43:40	2.75		61	
14:43:45	2.75		61	
14:43:50	2.75		61	
14:43:55	2.75		61	
14:44:00	2.75	5	66	
14:44:05	2.74		66	
14:44:10	2.75		66	
14:44:15	2.83		66	
14:44:20	2.93		66	
14:44:25	3.02		66	
14:44:30	3.05		66	
14:44:35	3.03		66	
14:44:40	3.02		66	
14:44:45	3.02		66	
14:44:50	3.01		66	
14:44:55	3.01		66	
14:45:00	3		66	
14:45:05	3		66	
14:45:10	2.99		66	
14:45:15	2.99		66	
14:45:20	2.99		66	
14:45:25	2.98		66	
14:45:30	2.98		66	
14:45:35	2.98		66	
14:45:40	2.98		66	
14:45:45	2.97		66	
14:45:50	2.97		66	
14:45:55	2.97		66	
14:46:00	2.97	5	71	
14:46:05	2.97		71	
14:46:10	2.97		71	
14:46:15	3.06		71	
14:46:20	3.18		71	
14:46:25	3.28		71	
14:46:30	3.32		71	
14:46:35	3.29		71	
14:46:40	3.27		71	
14:46:45	3.25		71	
14:46:50	3.25		71	
14:46:55	3.24		71	

Time	Avg (ppm)	Injection (mL)	Sum Injection (mL)	Notes
14:47:00	3.24		71	
14:47:05	3.23		71	
14:47:10	3.23		71	
14:47:15	3.22		71	
14:47:20	3.22		71	
14:47:25	3.22		71	
14:47:30	3.22		71	
14:47:35	3.21		71	
14:47:40	3.21		71	
14:47:45	3.21		71	
14:47:50	3.2		71	
14:47:55	3.2		71	
14:48:00	3.19	5	76	
14:48:05	3.19		76	
14:48:10	3.19		76	
14:48:15	3.26		76	
14:48:20	3.36		76	
14:48:25	3.46		76	
14:48:30	3.5		76	
14:48:35	3.49		76	
14:48:40	3.47		76	
14:48:45	3.46		76	
14:48:50	3.45		76	
14:48:55	3.45		76	
14:49:00	3.45		76	
14:49:05	3.44		76	
14:49:10	3.43		76	
14:49:15	3.43		76	
14:49:20	3.42		76	
14:49:25	3.42		76	
14:49:30	3.41		76	
14:49:35	3.41		76	
14:49:40	3.41		76	
14:49:45	3.41		76	
14:49:50	3.41		76	
14:49:55	3.41		76	
14:50:00	3.4	5	81	
14:50:05	3.4		81	
14:50:10	3.39		81	
14:50:15	3.46		81	
14:50:20	3.55		81	
14:50:25	3.65		81	
14:50:30	3.7		81	
14:50:35	3.69		81	
14:50:40	3.68		81	
14:50:45	3.68		81	
14:50:50	3.67		81	
14:50:55	3.66		81	
14:51:00	3.66		81	
14:51:05	3.66		81	
14:51:10	3.66		81	
14:51:15	3.65		81	
14:51:20	3.65		81	
14:51:25	3.64		81	
14:51:30	3.64		81	
14:51:35	3.64		81	
14:51:40	3.63		81	
14:51:45	3.63		81	
14:51:50	3.63		81	
14:51:55	3.62		81	
14:52:00	3.62	5	86	
14:52:05	3.62		86	
14:52:10	3.61		86	
14:52:15	3.61		86	
14:52:20	3.61		86	
14:52:25	3.66		86	
14:52:30	3.75		86	
14:52:35	3.84		86	
14:52:40	3.89		86	
14:52:45	3.88		86	
14:52:50	3.87		86	
14:52:55	3.86		86	
14:53:00	3.86		86	
14:53:05	3.85		86	
14:53:10	3.84		86	
14:53:15	3.84		86	

Time	Avg (ppm)	Injection (mL)	Sum Injection (mL)	Notes
14:53:20	3.83		86	
14:53:25	3.83		86	
14:53:30	3.83		86	
14:53:35	3.82		86	
14:53:40	3.82		86	
14:53:45	3.81		86	
14:53:50	3.81		86	
14:53:55	3.81		86	
14:54:00	3.8	5	91	
14:54:05	3.8		91	
14:54:10	3.8		91	
14:54:15	3.86		91	
14:54:20	3.94		91	
14:54:25	4.02		91	
14:54:30	4.06		91	
14:54:35	4.07		91	
14:54:40	4.07		91	
14:54:45	4.07		91	
14:54:50	4.06		91	
14:54:55	4.06		91	
14:55:00	4.05		91	
14:55:05	4.05		91	
14:55:10	4.05		91	
14:55:15	4.05		91	
14:55:20	4.04		91	
14:55:25	4.04		91	
14:55:30	4.03		91	
14:55:35	4.03		91	
14:55:40	4.03		91	
14:55:45	4.02		91	
14:55:50	4.02		91	
14:55:55	4.01		91	
14:56:00	4.01	6	97	
14:56:05	4		97	
14:56:10	4.01		97	
14:56:15	4.07		97	
14:56:20	4.18		97	
14:56:25	4.29		97	
14:56:30	4.34		97	
14:56:35	4.34		97	
14:56:40	4.32		97	
14:56:45	4.31		97	
14:56:50	4.31		97	
14:56:55	4.3		97	
14:57:00	4.3		97	
14:57:05	4.29		97	
14:57:10	4.28		97	
14:57:15	4.28		97	
14:57:20	4.27		97	
14:57:25	4.27		97	
14:57:30	4.27		97	
14:57:35	4.26		97	
14:57:40	4.26		97	
14:57:45	4.26		97	
14:57:50	4.25		97	
14:57:55	4.24		97	
14:58:00	4.24	4	101	
14:58:05	4.23		101	
14:58:10	4.24		101	
14:58:15	4.29		101	
14:58:20	4.37		101	
14:58:25	4.43		101	
14:58:30	4.45		101	
14:58:35	4.45		101	
14:58:40	4.45		101	
14:58:45	4.45		101	
14:58:50	4.46		101	
14:58:55	4.46		101	
14:59:00	4.48		101	
14:59:05	4.48		101	
14:59:10	4.49		101	
14:59:15	4.5		101	
14:59:20	4.5		101	
14:59:25	4.51		101	
14:59:30	4.51		101	
14:59:35	4.51		101	

Time	Avg (ppm)	Injection (mL)	Sum Injection (mL)	Notes
14:59:40	4.51		101	
14:59:45	4.5		101	
14:59:50	4.5		101	
14:59:55	4.49		101	
15:00:00	4.49	5	106	New Syringe
15:00:05	4.49		106	
15:00:10	4.48		106	
15:00:15	4.51		106	
15:00:20	4.56		106	
15:00:25	4.61		106	
15:00:30	4.64		106	
15:00:35	4.63		106	
15:00:40	4.62		106	
15:00:45	4.62		106	
15:00:50	4.62		106	
15:00:55	4.61		106	
15:01:00	4.61		106	
15:01:05	4.61		106	
15:01:10	4.6		106	
15:01:15	4.59		106	
15:01:20	4.59		106	
15:01:25	4.58		106	
15:01:30	4.58		106	
15:01:35	4.57		106	
15:01:40	4.57		106	
15:01:45	4.57		106	
15:01:50	4.57		106	
15:01:55	4.56		106	
15:02:00	4.56	5	111	
15:02:05	4.56		111	
15:02:10	4.56		111	
15:02:15	4.62		111	
15:02:20	4.71		111	
15:02:25	4.81		111	
15:02:30	4.86		111	
15:02:35	4.85		111	
15:02:40	4.84		111	
15:02:45	4.83		111	
15:02:50	4.82		111	
15:02:55	4.82		111	
15:03:00	4.82		111	
15:03:05	4.81		111	
15:03:10	4.81		111	
15:03:15	4.81		111	
15:03:20	4.8		111	
15:03:25	4.8		111	
15:03:30	4.79		111	
15:03:35	4.78		111	
15:03:40	4.78		111	
15:03:45	4.78		111	
15:03:50	4.78		111	
15:03:55	4.77		111	
15:04:00	4.77	5	116	
15:04:05	4.77		116	
15:04:10	4.76		116	
15:04:15	4.81		116	
15:04:20	4.89		116	
15:04:25	4.98		116	
15:04:30	5.03		116	Alarm
15:04:35	5.04		116	
15:04:40	5.03		116	
15:04:45	5.03		116	
15:04:50	5.03		116	
15:04:55	5.02		116	
15:05:00	5.02		116	
15:05:05	5.02		116	
15:05:10	5.02		116	
15:05:15	5.01		116	
15:05:20	5.01		116	
15:05:25	5		116	
15:05:30	5		116	
15:05:35	4.99		116	
15:05:40	4.99		116	
15:05:45	4.98		116	
15:05:50	4.98		116	
15:05:55	4.97		116	

Time	Avg (ppm)	Injection (mL)	Sum Injection (mL)	Notes
15:06:00	4.96		116	
15:06:05	4.96		116	
15:06:10	4.95		116	
15:06:15	4.95		116	
15:06:20	4.95		0	Doors Open
15:06:25	4.94		0	
15:06:30	4.91		0	
15:06:35	4.85		0	
15:06:40	4.71		0	
15:06:45	4.55		0	
15:06:50	4.35		0	
15:06:55	4.1		0	
15:07:00	3.76		0	
15:07:05	3.32		0	
15:07:10	2.85		0	
15:07:15	2.45		0	
15:07:20	2.08		0	
15:07:25	1.76		0	
15:07:30	1.49		0	
15:07:35	1.28		0	
15:07:40	1.13		0	
15:07:45	1		0	
15:07:50	0.87		0	
15:07:55	0.74		0	
15:08:00	0.61		0	
15:08:05	0.5		0	
15:08:10	0.42		0	
15:08:15	0.37		0	
15:08:20	0.31		0	
15:08:25	0.27		0	
15:08:30	0.22		0	
15:08:35	0.19		0	
15:08:40	0.16		0	
15:08:45	0.14		0	
15:08:50	0.11		0	
15:08:55	0.1		0	
15:09:00	0.08		0	
15:09:05	0.07		0	
15:09:10	0.06		0	
15:09:15	0.05		0	
15:09:20	0.05		0	
15:09:25	0.04		0	
15:09:30	0.03		0	
15:09:35	0.02		0	
15:09:40	0.02		0	
15:09:45	0.01		0	
15:09:50	0.01		0	
15:09:55	0.02		0	
15:10:00	0.02		0	Doors Shut
15:10:05	0.02		0	
15:10:10	0.02		0	
15:10:15	0.02		0	
15:10:20	0.02		0	
15:10:25	0.02		0	
15:10:30	0.02		0	
15:10:35	0.02		0	
15:10:40	0.02		0	
15:10:45	0.02		0	
15:10:50	0.02		0	
15:10:55	0.02		0	
15:11:00	0.02		0	
15:11:05	0.02		0	
15:11:10	0.02		0	
15:11:15	0.11	25	25	Start large injection
15:11:20	0.56		25	
15:11:25	1.12		25	
15:11:30	1.68		25	
15:11:35	1.82		25	
15:11:40	1.8		25	
15:11:45	1.77		25	
15:11:50	1.74		25	
15:11:55	1.72		25	
15:12:00	1.71		25	
15:12:05	1.7		25	
15:12:10	1.7		25	
15:12:15	1.7		25	

Time	Avg (ppm)	Injection (mL)	Sum Injection (mL)	Notes
15:12:20	1.69		25	
15:12:25	1.69		25	
15:12:30	1.68		25	
15:12:35	1.68		25	
15:12:40	1.68		25	
15:12:45	1.68		25	
15:12:50	1.68		25	
15:12:55	1.67		25	
15:13:00	1.67		25	
15:13:05	1.67		25	
15:13:10	1.67		25	
15:13:15	1.67		25	
15:13:20	1.67		25	
15:13:25	1.67		25	
15:13:30	1.66		25	
15:13:35	1.66		25	
15:13:40	1.66		25	
15:13:45	1.66		25	
15:13:50	1.66		25	
15:13:55	1.65		25	
15:14:00	1.65		25	
15:14:05	1.65		25	
15:14:10	1.65		25	
15:14:15	1.65		25	
15:14:20	1.65		25	
15:14:25	1.65		25	
15:14:30	1.64		25	
15:14:35	1.64		25	
15:14:40	1.64		25	
15:14:45	1.64		25	
15:14:50	1.64		25	
15:14:55	1.64		25	
15:15:00	1.64		25	
15:15:05	1.63		25	
15:15:10	1.63		25	
15:15:15	1.63		25	
15:15:20	1.63		25	
15:15:25	1.63		25	
15:15:30	1.63		25	
15:15:35	1.63		25	
15:15:40	1.64		25	
15:15:45	1.65		25	
15:15:50	1.67		25	
15:15:55	1.68		25	
15:16:00	1.7		25	
15:16:05	1.71		25	
15:16:10	1.72		25	
15:16:15	1.73		25	
15:16:20	1.73		25	
15:16:25	1.74		25	
15:16:30	1.74		25	
15:16:35	1.75		25	
15:16:40	1.75		25	
15:16:45	1.75		25	
15:16:50	1.75		25	
15:16:55	1.75		25	
15:17:00	1.75		25	
15:17:05	1.75		25	
15:17:10	1.75		25	
15:17:15	1.76	20	45	
15:17:20	1.95		45	
15:17:25	2.3		45	
15:17:30	2.69		45	
15:17:35	2.93		45	
15:17:40	2.94		45	
15:17:45	2.91		45	
15:17:50	2.89		45	
15:17:55	2.87		45	
15:18:00	2.86		45	
15:18:05	2.86		45	
15:18:10	2.85		45	
15:18:15	2.85		45	
15:18:20	2.85		45	
15:18:25	2.85		45	
15:18:30	2.84		45	
15:18:35	2.84		45	

Time	Avg (ppm)	Injection (mL)	Sum Injection (mL)	Notes
15:18:40	2.84		45	
15:18:45	2.83		45	
15:18:50	2.82		45	
15:18:55	2.82		45	
15:19:00	2.82		45	
15:19:05	2.82		45	
15:19:10	2.82		45	
15:19:15	2.82		45	
15:19:20	2.81		45	
15:19:25	2.81		45	
15:19:30	2.81		45	
15:19:35	2.8		45	
15:19:40	2.8		45	
15:19:45	2.8		45	
15:19:50	2.79		45	
15:19:55	2.79		45	
15:20:00	2.79		45	
15:20:05	2.78		45	
15:20:10	2.79	20	65	
15:20:15	2.99		65	
15:20:20	3.39		65	
15:20:25	3.82		65	
15:20:30	4.1		65	
15:20:35	4.11		65	
15:20:40	4.08		65	
15:20:45	4.07		65	
15:20:50	4.05		65	
15:20:55	4.04		65	
15:21:00	4.04		65	
15:21:05	4.03		65	
15:21:10	4.02		65	
15:21:15	4.02		65	
15:21:20	4.02		65	
15:21:25	4.01		65	
15:21:30	4.01		65	
15:21:35	4.01		65	
15:21:40	4.01		65	
15:21:45	4		65	
15:21:50	4		65	
15:21:55	3.99		65	
15:22:00	3.99		65	
15:22:05	3.99		65	
15:22:10	3.98		65	
15:22:15	3.97		65	
15:22:20	3.97		65	
15:22:25	3.96		65	
15:22:30	3.96		65	
15:22:35	3.96		65	
15:22:40	3.96		65	
15:22:45	3.95		65	
15:22:50	3.95		65	
15:22:55	3.94		65	
15:23:00	3.94		65	
15:23:05	3.93		65	
15:23:10	3.93		65	
15:23:15	3.93		65	
15:23:20	3.92		65	
15:23:25	3.92		65	
15:23:30	3.92		65	
15:23:35	3.91		65	
15:23:40	3.91		65	
15:23:45	3.91		65	
15:23:50	3.91		65	
15:23:55	3.9		65	Doors Open
15:24:00	3.89		65	
15:24:05	3.78		65	
15:24:10	3.58		65	
15:24:15	3.25		65	
15:24:20	2.96		65	
15:24:25	2.75		65	
15:24:30	2.58		65	
15:24:35	2.36		65	
15:24:40	2.03		65	
15:24:45	1.62		65	
15:24:50	1.2		65	
15:24:55	0.82		65	

<u>Time</u>	<u>Avg (ppm)</u>	<u>Injection (mL)</u>	<u>Sum Injection (mL)</u>	<u>Notes</u>
15:25:00	0.5		65	
15:25:05	0.29		65	
15:25:10	0.15		65	
15:25:15	0.09		65	
15:25:20	0.05		65	
15:25:25	0.04		65	
15:25:30	0.06		65	
15:25:35	0.07		65	
15:25:40	0.07		65	
15:25:45	0.06		65	
15:25:50	0.04		65	
15:25:55	0.02		65	
15:26:00	0.01		65	
15:26:05	0		65	
15:26:10	0		65	
15:26:15	0		65	

Time	Avg (ppm)	Injection (mL)	Sum Injection (mL)	Notes
14:09:45	-0.04		0	Start
14:09:50	-0.04		0	
14:09:55	-0.04		0	
14:10:00	-0.04		0	
14:10:05	-0.04		0	
14:10:10	-0.04		0	
14:10:15	-0.04		0	
14:10:20	-0.04		0	
14:10:25	-0.04		0	
14:10:30	-0.03		0	
14:10:35	-0.03		0	
14:10:40	-0.04		0	
14:10:45	-0.04		0	
14:10:50	-0.04		0	
14:10:55	-0.04		0	
14:11:00	-0.04		0	
14:11:05	-0.04		0	
14:11:10	-0.04		0	
14:11:15	-0.04		0	
14:11:20	-0.04		0	
14:11:25	-0.04		0	
14:11:30	-0.04		0	
14:11:35	-0.04		0	
14:11:40	-0.04		0	
14:11:45	-0.04		0	
14:11:50	-0.04		0	
14:11:55	-0.04		0	
14:12:00	-0.04		0	Doors shut
14:12:05	-0.04		0	
14:12:10	-0.04		0	
14:12:15	-0.04		0	
14:12:20	-0.04		0	
14:12:25	-0.04		0	
14:12:30	-0.04		0	
14:12:35	-0.04		0	
14:12:40	-0.04		0	
14:12:45	-0.04		0	
14:12:50	-0.04		0	
14:12:55	-0.04		0	
14:13:00	-0.04		0	
14:13:05	-0.04		0	
14:13:10	-0.04		0	
14:13:15	-0.04		0	
14:13:20	-0.04		0	
14:13:25	-0.04		0	
14:13:30	-0.04		0	
14:13:35	-0.04		0	
14:13:40	-0.04		0	
14:13:45	-0.04		0	
14:13:50	-0.04		0	
14:13:55	-0.04		0	
14:14:00	-0.04		0	
14:14:05	-0.04		0	
14:14:10	-0.04		0	
14:14:15	-0.04		0	
14:14:20	-0.04		0	
14:14:25	-0.04		0	
14:14:30	-0.04		0	
14:14:35	-0.04		0	
14:14:40	-0.04		0	
14:14:45	-0.04		0	
14:14:50	-0.04		0	
14:14:55	-0.04		0	
14:15:00	-0.04		0	
14:15:05	-0.04		0	
14:15:10	-0.04		0	
14:15:15	-0.04		0	
14:15:20	-0.04		0	
14:15:25	-0.04		0	
14:15:30	-0.04		0	
14:15:35	-0.04		0	
14:15:40	-0.05		0	
14:15:45	-0.04		0	
14:15:50	-0.04		0	
14:15:55	-0.04		0	
14:16:00	-0.04		0	
14:16:05	-0.04		0	
14:16:10	-0.04		0	
14:16:15	-0.04		0	
14:16:20	-0.04		0	
14:16:25	-0.04		0	
14:16:30	-0.05		0	

Time	Avg (ppm)	Injection (mL)	Sum Injection (mL)	Notes
14:16:35	-0.05		0	
14:16:40	-0.05		0	
14:16:45	-0.05		0	
14:16:50	-0.05		0	
14:16:55	-0.05		0	
14:17:00	-0.05		0	
14:17:05	-0.05		0	
14:17:10	-0.05		0	
14:17:15	-0.05		0	
14:17:20	-0.05		0	
14:17:25	-0.05		0	
14:17:30	-0.05		0	
14:17:35	-0.05		0	
14:17:40	-0.05		0	
14:17:45	-0.05		0	
14:17:50	-0.05		0	
14:17:55	-0.05		0	
14:18:00	-0.05		0	
14:18:05	-0.05		0	
14:18:10	-0.05		0	
14:18:15	-0.05		0	
14:18:20	-0.05		0	
14:18:25	-0.05		0	
14:18:30	-0.05		0	
14:18:35	-0.05		0	
14:18:40	-0.05		0	
14:18:45	-0.05		0	
14:18:50	-0.05		0	
14:18:55	-0.05		0	
14:19:00	-0.05		0	
14:19:05	-0.05		0	
14:19:10	-0.05		0	
14:19:15	-0.05		0	
14:19:20	-0.03	12	12	Injection Start
14:19:25	0.08		12	
14:19:30	0.25		12	
14:19:35	0.42		12	
14:19:40	0.49		12	
14:19:45	0.5		12	
14:19:50	0.49		12	
14:19:55	0.49		12	
14:20:00	0.51		12	
14:20:05	0.55		12	
14:20:10	0.57		12	
14:20:15	0.58		12	
14:20:20	0.58		12	
14:20:25	0.57		12	
14:20:30	0.56		12	
14:20:35	0.56		12	
14:20:40	0.56		12	
14:20:45	0.56		12	
14:20:50	0.56		12	
14:20:55	0.56		12	
14:21:00	0.56		12	
14:21:05	0.56		12	
14:21:10	0.55		12	
14:21:15	0.55		12	
14:21:20	0.55		12	
14:21:25	0.55		12	
14:21:30	0.55		12	
14:21:35	0.55		12	
14:21:40	0.55		12	
14:21:45	0.55		12	
14:21:50	0.55		12	
14:21:55	0.54		12	
14:22:00	0.54	5	17	
14:22:05	0.54		17	
14:22:10	0.54		17	
14:22:15	0.58		17	
14:22:20	0.67		17	
14:22:25	0.77		17	
14:22:30	0.84		17	
14:22:35	0.83		17	
14:22:40	0.82		17	
14:22:45	0.81		17	
14:22:50	0.8		17	
14:22:55	0.79		17	
14:23:00	0.79		17	
14:23:05	0.79		17	
14:23:10	0.78		17	
14:23:15	0.78		17	
14:23:20	0.78		17	
14:23:25	0.78		17	

Time	Avg (ppm)	Injection (mL)	Sum Injection (mL)	Notes
14:23:30	0.78		17	
14:23:35	0.78		17	
14:23:40	0.78		17	
14:23:45	0.78		17	
14:23:50	0.78		17	
14:23:55	0.77		17	
14:24:00	0.77		17	
14:24:05	0.77		17	
14:24:10	0.77		17	
14:24:15	0.77		17	
14:24:20	0.77		17	
14:24:25	0.77		17	
14:24:30	0.77		17	
14:24:35	0.77		17	
14:24:40	0.77		17	
14:24:45	0.77		17	
14:24:50	0.77		17	
14:24:55	0.77		17	
14:25:00	0.76	5	22	
14:25:05	0.76		22	
14:25:10	0.76		22	
14:25:15	0.81		22	
14:25:20	0.92		22	
14:25:25	1.03		22	
14:25:30	1.1		22	
14:25:35	1.1		22	
14:25:40	1.09		22	
14:25:45	1.07		22	
14:25:50	1.06		22	
14:25:55	1.06		22	
14:26:00	1.05		22	
14:26:05	1.05		22	
14:26:10	1.05		22	
14:26:15	1.04		22	
14:26:20	1.04		22	
14:26:25	1.04		22	
14:26:30	1.04		22	
14:26:35	1.04		22	
14:26:40	1.03		22	
14:26:45	1.03		22	
14:26:50	1.03		22	
14:26:55	1.03		22	
14:27:00	1.03	5	27	
14:27:05	1.03		27	
14:27:10	1.03		27	
14:27:15	1.08		27	
14:27:20	1.18		27	
14:27:25	1.28		27	
14:27:30	1.34		27	
14:27:35	1.34		27	
14:27:40	1.32		27	
14:27:45	1.31		27	
14:27:50	1.31		27	
14:27:55	1.3		27	
14:28:00	1.3		27	
14:28:05	1.3		27	
14:28:10	1.3		27	
14:28:15	1.29		27	
14:28:20	1.29		27	
14:28:25	1.29		27	
14:28:30	1.29		27	
14:28:35	1.29		27	
14:28:40	1.29		27	
14:28:45	1.29		27	
14:28:50	1.28		27	
14:28:55	1.28		27	
14:29:00	1.28	5	32	
14:29:05	1.28		32	
14:29:10	1.28		32	
14:29:15	1.31		32	
14:29:20	1.39		32	
14:29:25	1.48		32	
14:29:30	1.55		32	
14:29:35	1.57		32	
14:29:40	1.56		32	
14:29:45	1.55		32	
14:29:50	1.55		32	
14:29:55	1.54		32	
14:30:00	1.54		32	
14:30:05	1.54		32	
14:30:10	1.53		32	
14:30:15	1.53		32	
14:30:20	1.53		32	

Time	Avg (ppm)	Injection (mL)	Sum Injection (mL)	Notes
14:30:25	1.53		32	
14:30:30	1.52		32	
14:30:35	1.52		32	
14:30:40	1.52		32	
14:30:45	1.52		32	
14:30:50	1.52		32	
14:30:55	1.52		32	
14:31:00	1.52	5	37	
14:31:05	1.52		37	
14:31:10	1.52		37	
14:31:15	1.57		37	
14:31:20	1.68		37	
14:31:25	1.78		37	
14:31:30	1.83		37	
14:31:35	1.82		37	
14:31:40	1.81		37	
14:31:45	1.8		37	
14:31:50	1.79		37	
14:31:55	1.78		37	
14:32:00	1.78		37	
14:32:05	1.77		37	
14:32:10	1.77		37	
14:32:15	1.77		37	
14:32:20	1.77		37	
14:32:25	1.77		37	
14:32:30	1.76		37	
14:32:35	1.76		37	
14:32:40	1.76		37	
14:32:45	1.76		37	
14:32:50	1.76		37	
14:32:55	1.76		37	
14:33:00	1.76	5	42	
14:33:05	1.76		42	
14:33:10	1.76		42	
14:33:15	1.82		42	
14:33:20	1.92		42	
14:33:25	2.02		42	
14:33:30	2.07		42	
14:33:35	2.07		42	
14:33:40	2.06		42	
14:33:45	2.05		42	
14:33:50	2.04		42	
14:33:55	2.03		42	
14:34:00	2.03		42	
14:34:05	2.02		42	
14:34:10	2.02		42	
14:34:15	2.02		42	
14:34:20	2.01		42	
14:34:25	2.01		42	
14:34:30	2.01		42	
14:34:35	2.01		42	
14:34:40	2.01		42	
14:34:45	2.01		42	
14:34:50	2		42	
14:34:55	2		42	
14:35:00	2	5	47	
14:35:05	2		47	
14:35:10	2		47	
14:35:15	2.06		47	
14:35:20	2.16		47	
14:35:25	2.25		47	
14:35:30	2.29		47	
14:35:35	2.28		47	
14:35:40	2.26		47	
14:35:45	2.25		47	
14:35:50	2.24		47	
14:35:55	2.24		47	
14:36:00	2.23		47	
14:36:05	2.23		47	
14:36:10	2.23		47	
14:36:15	2.23		47	
14:36:20	2.22		47	
14:36:25	2.22		47	
14:36:30	2.21		47	
14:36:35	2.21		47	
14:36:40	2.21		47	
14:36:45	2.21		47	
14:36:50	2.21		47	
14:36:55	2.21		47	
14:37:00	2.21	5	52	
14:37:05	2.2		52	
14:37:10	2.2		52	
14:37:15	2.25		52	

Time	Avg (ppm)	Injection (mL)	Sum Injection (mL)	Notes
14:37:20	2.35		52	
14:37:25	2.45		52	
14:37:30	2.51		52	
14:37:35	2.49		52	
14:37:40	2.48		52	
14:37:45	2.46		52	
14:37:50	2.46		52	
14:37:55	2.45		52	
14:38:00	2.45		52	
14:38:05	2.45		52	
14:38:10	2.44		52	
14:38:15	2.44		52	
14:38:20	2.44		52	
14:38:25	2.43		52	
14:38:30	2.43		52	
14:38:35	2.43		52	
14:38:40	2.42		52	
14:38:45	2.42		52	
14:38:50	2.42		52	
14:38:55	2.42		52	
14:39:00	2.42	5	57	
14:39:05	2.41		57	
14:39:10	2.41		57	
14:39:15	2.44		57	
14:39:20	2.51		57	
14:39:25	2.59		57	
14:39:30	2.65		57	
14:39:35	2.66		57	
14:39:40	2.66		57	
14:39:45	2.66		57	
14:39:50	2.67		57	
14:39:55	2.67		57	
14:40:00	2.68		57	
14:40:05	2.69		57	
14:40:10	2.7		57	
14:40:15	2.71		57	
14:40:20	2.71		57	
14:40:25	2.72		57	
14:40:30	2.72		57	
14:40:35	2.73		57	
14:40:40	2.73		57	
14:40:45	2.73		57	
14:40:50	2.73		57	
14:40:55	2.73		57	
14:41:00	2.73		57	
14:41:05	2.73		57	
14:41:10	2.73		57	
14:41:15	2.72		57	
14:41:20	2.73		57	
14:41:25	2.73		57	
14:41:30	2.73		57	
14:41:35	2.73		57	
14:41:40	2.72		57	
14:41:45	2.72		57	
14:41:50	2.72		57	
14:41:55	2.72		57	
14:42:00	2.71	4	61	New Syringe
14:42:05	2.71		61	
14:42:10	2.7		61	
14:42:15	2.71		61	
14:42:20	2.73		61	
14:42:25	2.77		61	
14:42:30	2.8		61	
14:42:35	2.81		61	
14:42:40	2.81		61	
14:42:45	2.8		61	
14:42:50	2.79		61	
14:42:55	2.79		61	
14:43:00	2.79		61	
14:43:05	2.79		61	
14:43:10	2.79		61	
14:43:15	2.78		61	
14:43:20	2.78		61	
14:43:25	2.77		61	
14:43:30	2.77		61	
14:43:35	2.77		61	
14:43:40	2.77		61	
14:43:45	2.76		61	
14:43:50	2.76		61	
14:43:55	2.76		61	
14:44:00	2.75	5	66	
14:44:05	2.75		66	
14:44:10	2.75		66	

Time	Avg (ppm)	Injection (mL)	Sum Injection (mL)	Notes
14:44:15	2.8		66	
14:44:20	2.89		66	
14:44:25	2.99		66	
14:44:30	3.05		66	
14:44:35	3.05		66	
14:44:40	3.04		66	
14:44:45	3.03		66	
14:44:50	3.03		66	
14:44:55	3.02		66	
14:45:00	3.02		66	
14:45:05	3.01		66	
14:45:10	3.01		66	
14:45:15	3.01		66	
14:45:20	3.01		66	
14:45:25	3		66	
14:45:30	3		66	
14:45:35	2.99		66	
14:45:40	2.99		66	
14:45:45	2.99		66	
14:45:50	2.98		66	
14:45:55	2.98		66	
14:46:00	2.98	5	71	
14:46:05	2.98		71	
14:46:10	2.98		71	
14:46:15	3.05		71	
14:46:20	3.17		71	
14:46:25	3.27		71	
14:46:30	3.32		71	
14:46:35	3.3		71	
14:46:40	3.29		71	
14:46:45	3.27		71	
14:46:50	3.27		71	
14:46:55	3.26		71	
14:47:00	3.26		71	
14:47:05	3.25		71	
14:47:10	3.25		71	
14:47:15	3.24		71	
14:47:20	3.23		71	
14:47:25	3.23		71	
14:47:30	3.23		71	
14:47:35	3.23		71	
14:47:40	3.22		71	
14:47:45	3.22		71	
14:47:50	3.22		71	
14:47:55	3.22		71	
14:48:00	3.21	5	76	
14:48:05	3.21		76	
14:48:10	3.21		76	
14:48:15	3.25		76	
14:48:20	3.34		76	
14:48:25	3.44		76	
14:48:30	3.51		76	
14:48:35	3.51		76	
14:48:40	3.49		76	
14:48:45	3.48		76	
14:48:50	3.47		76	
14:48:55	3.46		76	
14:49:00	3.45		76	
14:49:05	3.45		76	
14:49:10	3.45		76	
14:49:15	3.45		76	
14:49:20	3.44		76	
14:49:25	3.44		76	
14:49:30	3.43		76	
14:49:35	3.43		76	
14:49:40	3.43		76	
14:49:45	3.42		76	
14:49:50	3.42		76	
14:49:55	3.42		76	
14:50:00	3.41	5	81	
14:50:05	3.41		81	
14:50:10	3.4		81	
14:50:15	3.44		81	
14:50:20	3.53		81	
14:50:25	3.63		81	
14:50:30	3.7		81	
14:50:35	3.7		81	
14:50:40	3.7		81	
14:50:45	3.69		81	
14:50:50	3.68		81	
14:50:55	3.68		81	
14:51:00	3.67		81	
14:51:05	3.67		81	

Time	Avg (ppm)	Injection (mL)	Sum Injection (mL)	Notes
14:51:10	3.66		81	
14:51:15	3.66		81	
14:51:20	3.66		81	
14:51:25	3.65		81	
14:51:30	3.66		81	
14:51:35	3.65		81	
14:51:40	3.65		81	
14:51:45	3.65		81	
14:51:50	3.64		81	
14:51:55	3.64		81	
14:52:00	3.64	5	86	
14:52:05	3.63		86	
14:52:10	3.63		86	
14:52:15	3.62		86	
14:52:20	3.62		86	
14:52:25	3.65		86	
14:52:30	3.73		86	
14:52:35	3.81		86	
14:52:40	3.88		86	
14:52:45	3.89		86	
14:52:50	3.89		86	
14:52:55	3.88		86	
14:53:00	3.87		86	
14:53:05	3.87		86	
14:53:10	3.86		86	
14:53:15	3.86		86	
14:53:20	3.85		86	
14:53:25	3.85		86	
14:53:30	3.84		86	
14:53:35	3.84		86	
14:53:40	3.83		86	
14:53:45	3.83		86	
14:53:50	3.82		86	
14:53:55	3.82		86	
14:54:00	3.82	5	91	
14:54:05	3.82		91	
14:54:10	3.82		91	
14:54:15	3.86		91	
14:54:20	3.93		91	
14:54:25	4.01		91	
14:54:30	4.06		91	
14:54:35	4.08		91	
14:54:40	4.08		91	
14:54:45	4.08		91	
14:54:50	4.07		91	
14:54:55	4.07		91	
14:55:00	4.07		91	
14:55:05	4.07		91	
14:55:10	4.07		91	
14:55:15	4.06		91	
14:55:20	4.06		91	
14:55:25	4.05		91	
14:55:30	4.05		91	
14:55:35	4.04		91	
14:55:40	4.04		91	
14:55:45	4.04		91	
14:55:50	4.03		91	
14:55:55	4.03		91	
14:56:00	4.03	6	97	
14:56:05	4.03		97	
14:56:10	4.02		97	
14:56:15	4.08		97	
14:56:20	4.17		97	
14:56:25	4.28		97	
14:56:30	4.34		97	
14:56:35	4.35		97	
14:56:40	4.34		97	
14:56:45	4.34		97	
14:56:50	4.33		97	
14:56:55	4.32		97	
14:57:00	4.31		97	
14:57:05	4.31		97	
14:57:10	4.3		97	
14:57:15	4.3		97	
14:57:20	4.3		97	
14:57:25	4.29		97	
14:57:30	4.29		97	
14:57:35	4.28		97	
14:57:40	4.28		97	
14:57:45	4.28		97	
14:57:50	4.27		97	
14:57:55	4.27		97	
14:58:00	4.26	4	101	

Time	Avg (ppm)	Injection (mL)	Sum Injection (mL)	Notes
14:58:05	4.26		101	
14:58:10	4.26		101	
14:58:15	4.3		101	
14:58:20	4.36		101	
14:58:25	4.43		101	
14:58:30	4.46		101	
14:58:35	4.46		101	
14:58:40	4.46		101	
14:58:45	4.46		101	
14:58:50	4.47		101	
14:58:55	4.47		101	
14:59:00	4.48		101	
14:59:05	4.49		101	
14:59:10	4.51		101	
14:59:15	4.51		101	
14:59:20	4.52		101	
14:59:25	4.52		101	
14:59:30	4.52		101	
14:59:35	4.52		101	
14:59:40	4.52		101	
14:59:45	4.52		101	
14:59:50	4.51		101	
14:59:55	4.51		101	
15:00:00	4.51	5	106	New Syringe
15:00:05	4.51		106	
15:00:10	4.5		106	
15:00:15	4.52		106	
15:00:20	4.56		106	
15:00:25	4.6		106	
15:00:30	4.64		106	
15:00:35	4.65		106	
15:00:40	4.65		106	
15:00:45	4.64		106	
15:00:50	4.64		106	
15:00:55	4.63		106	
15:01:00	4.63		106	
15:01:05	4.63		106	
15:01:10	4.63		106	
15:01:15	4.62		106	
15:01:20	4.61		106	
15:01:25	4.6		106	
15:01:30	4.6		106	
15:01:35	4.59		106	
15:01:40	4.59		106	
15:01:45	4.59		106	
15:01:50	4.59		106	
15:01:55	4.58		106	
15:02:00	4.58	5	111	
15:02:05	4.57		111	
15:02:10	4.57		111	
15:02:15	4.61		111	
15:02:20	4.71		111	
15:02:25	4.8		111	
15:02:30	4.86		111	
15:02:35	4.87		111	
15:02:40	4.87		111	
15:02:45	4.86		111	
15:02:50	4.85		111	
15:02:55	4.85		111	
15:03:00	4.84		111	
15:03:05	4.84		111	
15:03:10	4.84		111	
15:03:15	4.83		111	
15:03:20	4.83		111	
15:03:25	4.82		111	
15:03:30	4.82		111	
15:03:35	4.82		111	
15:03:40	4.81		111	
15:03:45	4.81		111	
15:03:50	4.8		111	
15:03:55	4.8		111	
15:04:00	4.8	5	116	
15:04:05	4.79		116	
15:04:10	4.79		116	
15:04:15	4.81		116	
15:04:20	4.88		116	
15:04:25	4.97		116	
15:04:30	5.04		116	Alarm
15:04:35	5.06		116	
15:04:40	5.07		116	
15:04:45	5.07		116	
15:04:50	5.06		116	
15:04:55	5.06		116	

Time	Avg (ppm)	Injection (mL)	Sum Injection (mL)	Notes
15:05:00	5.05		116	
15:05:05	5.04		116	
15:05:10	5.04		116	
15:05:15	5.03		116	
15:05:20	5.03		116	
15:05:25	5.02		116	
15:05:30	5.02		116	
15:05:35	5.01		116	
15:05:40	5.01		116	
15:05:45	5.01		116	
15:05:50	5		116	
15:05:55	5		116	
15:06:00	5		116	
15:06:05	4.99		116	
15:06:10	4.98		116	
15:06:15	4.98		116	
15:06:20	4.98		0	Doors Open
15:06:25	4.97		0	
15:06:30	4.94		0	
15:06:35	4.89		0	
15:06:40	4.77		0	
15:06:45	4.62		0	
15:06:50	4.43		0	
15:06:55	4.2		0	
15:07:00	3.91		0	
15:07:05	3.53		0	
15:07:10	3.09		0	
15:07:15	2.67		0	
15:07:20	2.28		0	
15:07:25	1.92		0	
15:07:30	1.62		0	
15:07:35	1.38		0	
15:07:40	1.22		0	
15:07:45	1.08		0	
15:07:50	0.94		0	
15:07:55	0.8		0	
15:08:00	0.66		0	
15:08:05	0.54		0	
15:08:10	0.45		0	
15:08:15	0.39		0	
15:08:20	0.34		0	
15:08:25	0.29		0	
15:08:30	0.24		0	
15:08:35	0.21		0	
15:08:40	0.18		0	
15:08:45	0.16		0	
15:08:50	0.13		0	
15:08:55	0.11		0	
15:09:00	0.09		0	
15:09:05	0.08		0	
15:09:10	0.07		0	
15:09:15	0.06		0	
15:09:20	0.05		0	
15:09:25	0.04		0	
15:09:30	0.03		0	
15:09:35	0.03		0	
15:09:40	0.02		0	
15:09:45	0.02		0	
15:09:50	0.02		0	
15:09:55	0.02		0	
15:10:00	0.02		0	Doors Shut
15:10:05	0.02		0	
15:10:10	0.02		0	
15:10:15	0.02		0	
15:10:20	0.02		0	
15:10:25	0.02		0	
15:10:30	0.02		0	
15:10:35	0.02		0	
15:10:40	0.02		0	
15:10:45	0.03		0	
15:10:50	0.03		0	
15:10:55	0.03		0	
15:11:00	0.03		0	
15:11:05	0.03		0	
15:11:10	0.03		0	
15:11:15	0.08	25	25	Start large injection
15:11:20	0.41		25	
15:11:25	0.93		25	
15:11:30	1.49		25	
15:11:35	1.77		25	
15:11:40	1.8		25	
15:11:45	1.79		25	
15:11:50	1.76		25	

Time	Avg (ppm)	Injection (mL)	Sum Injection (mL)	Notes
15:11:55	1.74		25	
15:12:00	1.73		25	
15:12:05	1.72		25	
15:12:10	1.71		25	
15:12:15	1.7		25	
15:12:20	1.7		25	
15:12:25	1.7		25	
15:12:30	1.7		25	
15:12:35	1.69		25	
15:12:40	1.69		25	
15:12:45	1.69		25	
15:12:50	1.69		25	
15:12:55	1.69		25	
15:13:00	1.69		25	
15:13:05	1.68		25	
15:13:10	1.68		25	
15:13:15	1.68		25	
15:13:20	1.68		25	
15:13:25	1.68		25	
15:13:30	1.68		25	
15:13:35	1.67		25	
15:13:40	1.67		25	
15:13:45	1.67		25	
15:13:50	1.67		25	
15:13:55	1.67		25	
15:14:00	1.67		25	
15:14:05	1.67		25	
15:14:10	1.67		25	
15:14:15	1.67		25	
15:14:20	1.66		25	
15:14:25	1.66		25	
15:14:30	1.65		25	
15:14:35	1.65		25	
15:14:40	1.65		25	
15:14:45	1.65		25	
15:14:50	1.65		25	
15:14:55	1.65		25	
15:15:00	1.65		25	
15:15:05	1.65		25	
15:15:10	1.64		25	
15:15:15	1.64		25	
15:15:20	1.64		25	
15:15:25	1.64		25	
15:15:30	1.64		25	
15:15:35	1.64		25	
15:15:40	1.65		25	
15:15:45	1.66		25	
15:15:50	1.68		25	
15:15:55	1.69		25	
15:16:00	1.7		25	
15:16:05	1.72		25	
15:16:10	1.73		25	
15:16:15	1.74		25	
15:16:20	1.75		25	
15:16:25	1.75		25	
15:16:30	1.75		25	
15:16:35	1.76		25	
15:16:40	1.76		25	
15:16:45	1.77		25	
15:16:50	1.77		25	
15:16:55	1.77		25	
15:17:00	1.77		25	
15:17:05	1.76		25	
15:17:10	1.76		25	
15:17:15	1.76	20	45	
15:17:20	1.87		45	
15:17:25	2.17		45	
15:17:30	2.54		45	
15:17:35	2.86		45	
15:17:40	2.94		45	
15:17:45	2.93		45	
15:17:50	2.92		45	
15:17:55	2.9		45	
15:18:00	2.89		45	
15:18:05	2.88		45	
15:18:10	2.87		45	
15:18:15	2.87		45	
15:18:20	2.86		45	
15:18:25	2.86		45	
15:18:30	2.86		45	
15:18:35	2.86		45	
15:18:40	2.85		45	
15:18:45	2.85		45	

Time	Avg (ppm)	Injection (mL)	Sum Injection (mL)	Notes
15:18:50	2.84		45	
15:18:55	2.84		45	
15:19:00	2.84		45	
15:19:05	2.84		45	
15:19:10	2.84		45	
15:19:15	2.83		45	
15:19:20	2.83		45	
15:19:25	2.82		45	
15:19:30	2.82		45	
15:19:35	2.82		45	
15:19:40	2.82		45	
15:19:45	2.82		45	
15:19:50	2.82		45	
15:19:55	2.81		45	
15:20:00	2.81		45	
15:20:05	2.81		45	
15:20:10	2.81	20	65	
15:20:15	2.91		65	
15:20:20	3.24		65	
15:20:25	3.65		65	
15:20:30	4.01		65	
15:20:35	4.12		65	
15:20:40	4.11		65	
15:20:45	4.1		65	
15:20:50	4.08		65	
15:20:55	4.07		65	
15:21:00	4.06		65	
15:21:05	4.06		65	
15:21:10	4.05		65	
15:21:15	4.04		65	
15:21:20	4.04		65	
15:21:25	4.04		65	
15:21:30	4.03		65	
15:21:35	4.03		65	
15:21:40	4.03		65	
15:21:45	4.02		65	
15:21:50	4.02		65	
15:21:55	4.01		65	
15:22:00	4.01		65	
15:22:05	4		65	
15:22:10	4		65	
15:22:15	4		65	
15:22:20	4		65	
15:22:25	3.99		65	
15:22:30	3.99		65	
15:22:35	3.99		65	
15:22:40	3.98		65	
15:22:45	3.98		65	
15:22:50	3.97		65	
15:22:55	3.96		65	
15:23:00	3.96		65	
15:23:05	3.96		65	
15:23:10	3.96		65	
15:23:15	3.96		65	
15:23:20	3.95		65	
15:23:25	3.95		65	
15:23:30	3.95		65	
15:23:35	3.94		65	
15:23:40	3.94		65	
15:23:45	3.93		65	
15:23:50	3.93		65	
15:23:55	3.92		65	Doors Open
15:24:00	3.92		65	
15:24:05	3.84		65	
15:24:10	3.67		65	
15:24:15	3.38		65	
15:24:20	3.09		65	
15:24:25	2.87		65	
15:24:30	2.68		65	
15:24:35	2.48		65	
15:24:40	2.17		65	