

Exceptional service in the national interest



Using Enforced TLS to Secure Email

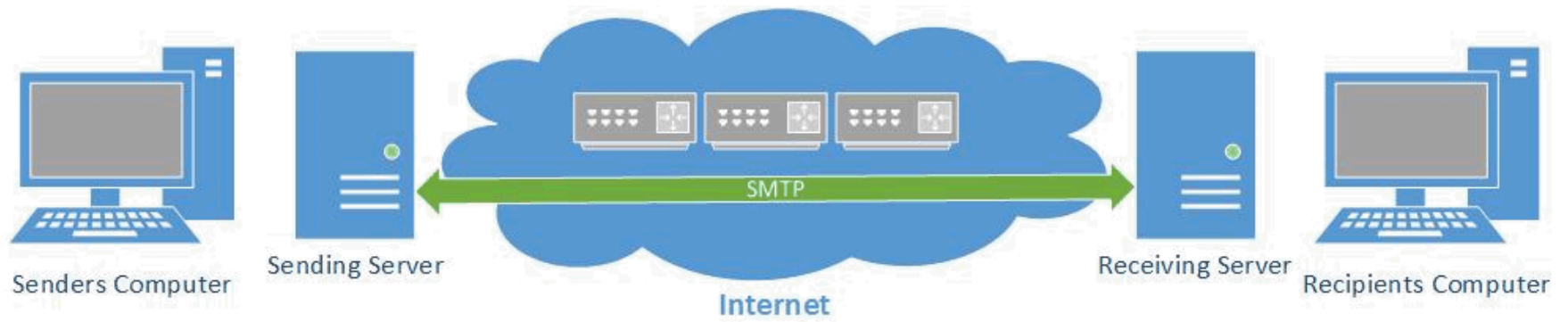
What's the problem?

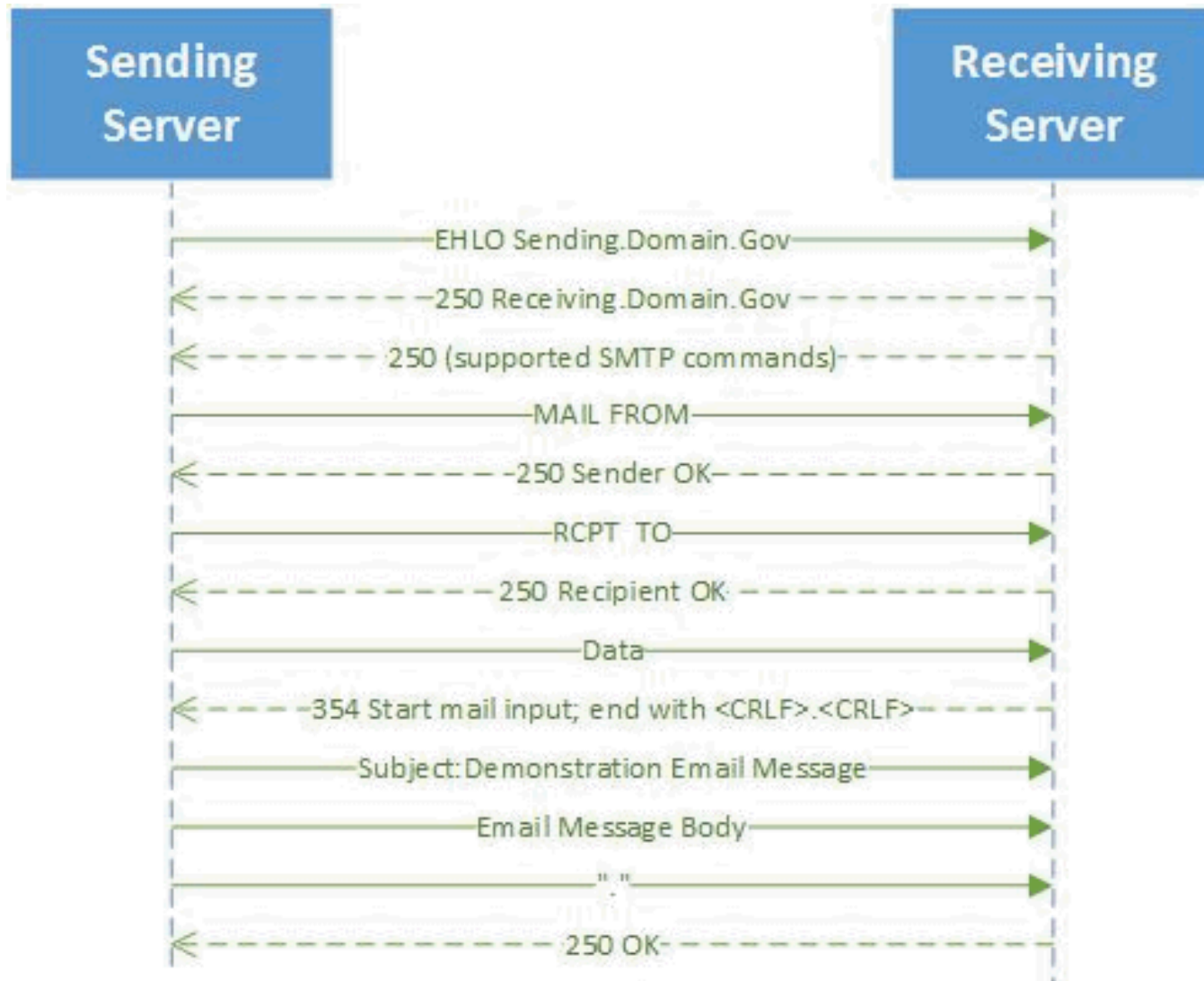
- “I forgot to encrypt the email!”
- Not meeting corporate requirements for protecting data

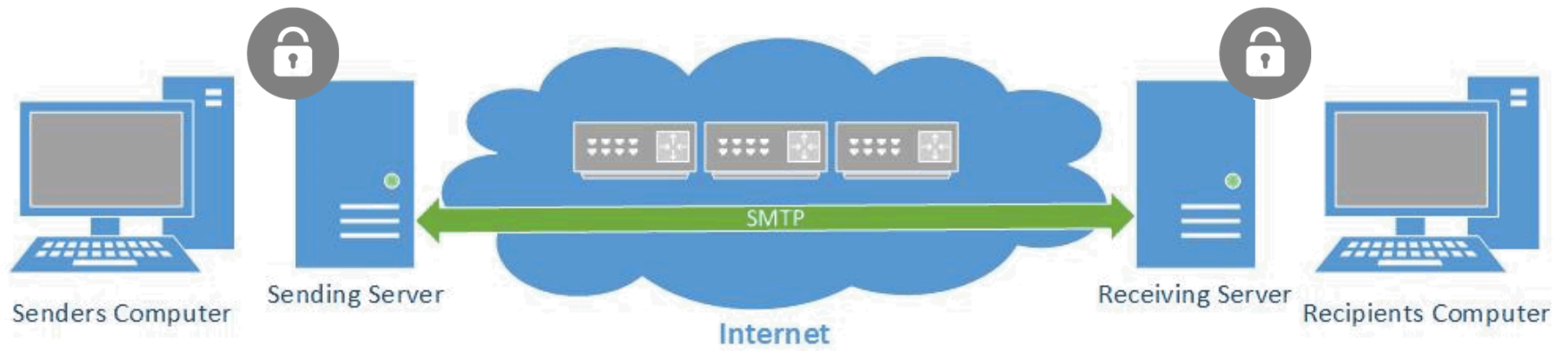
TLS!

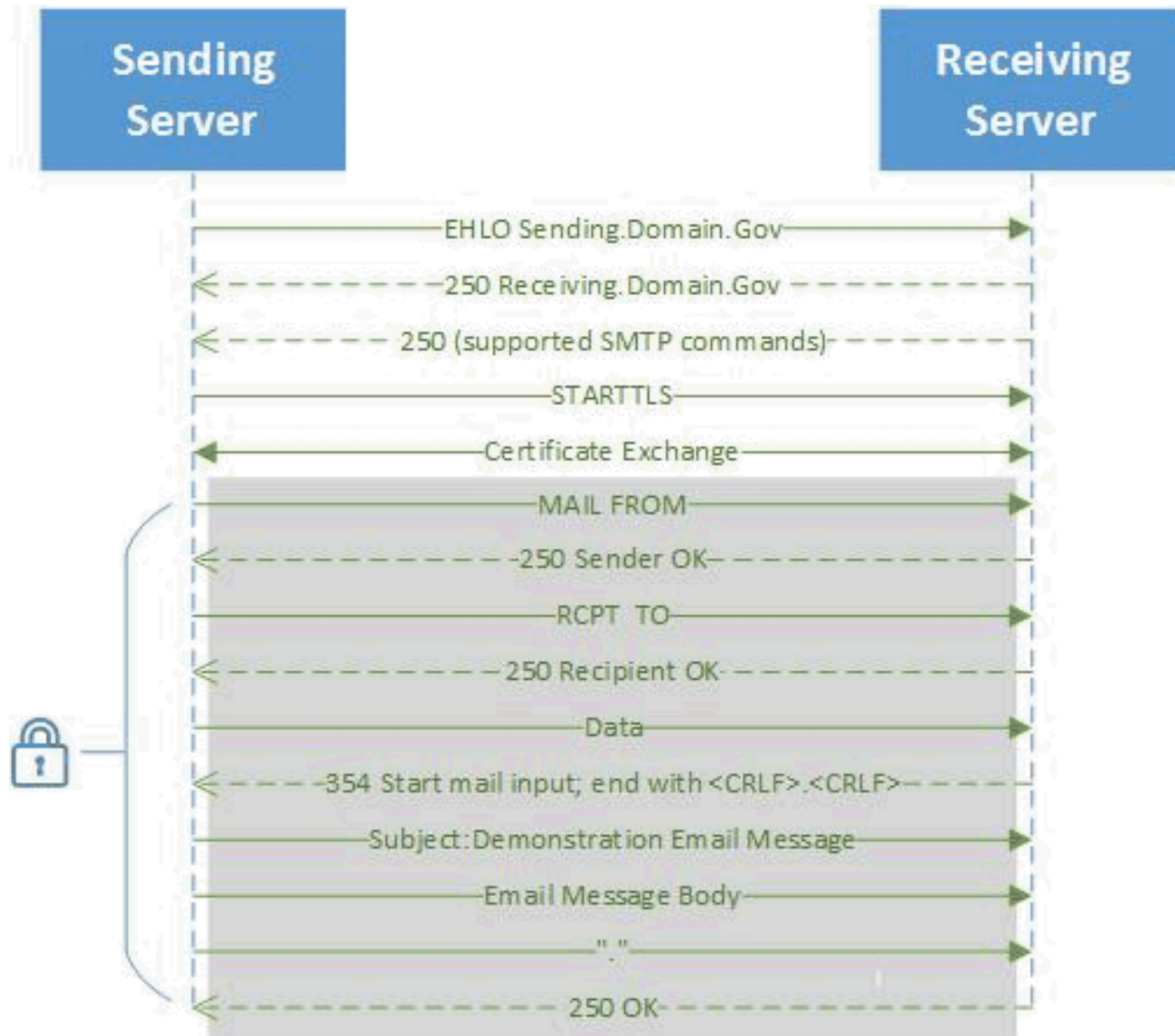
(Transport Layer Security)











Not just TLS...

Enforced TLS!

How can Enforced TLS be a service used by people?



- Authoritative list of domains configured with Enforced TLS
- A service request form to add new domains
- An operational process to fulfill service requests

So ... how's that been going?

?

Thanks!

Sandia National Laboratories

K. Jarrod Collins

kjcolli@sandia.gov

5052842918