

Exceptional service in the national interest



USER INTERFACE STORYBOARDS

Infrasound Processing Notes

To facilitate discussion with IDC
April 2016

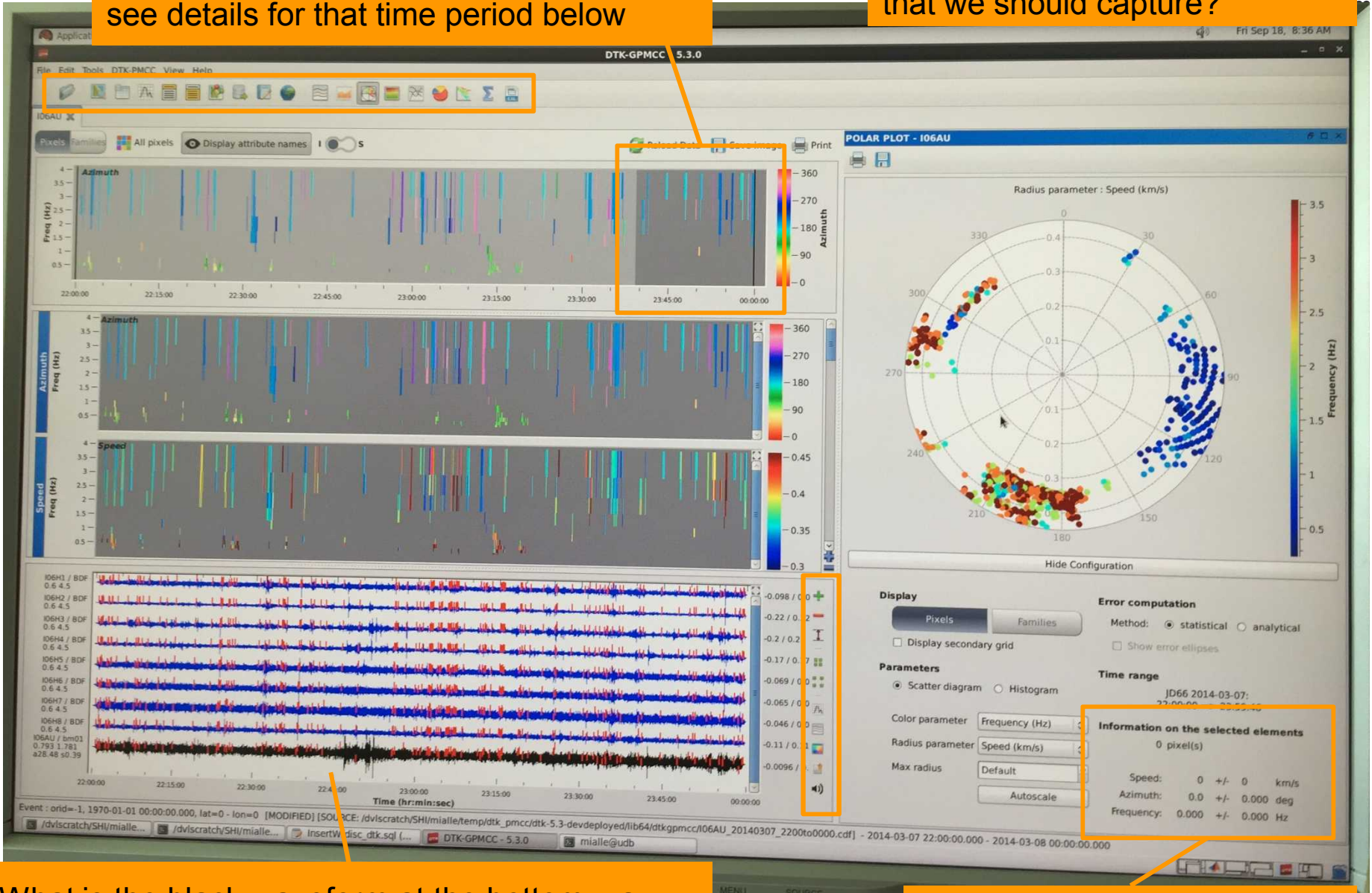
Is this an older version of the application shown on the next slide?



PMCC summary, Az/Slowness, channel waveforms – this view is for a single station. Create a new 'Infrasound Az/Slow' tab to show this information.

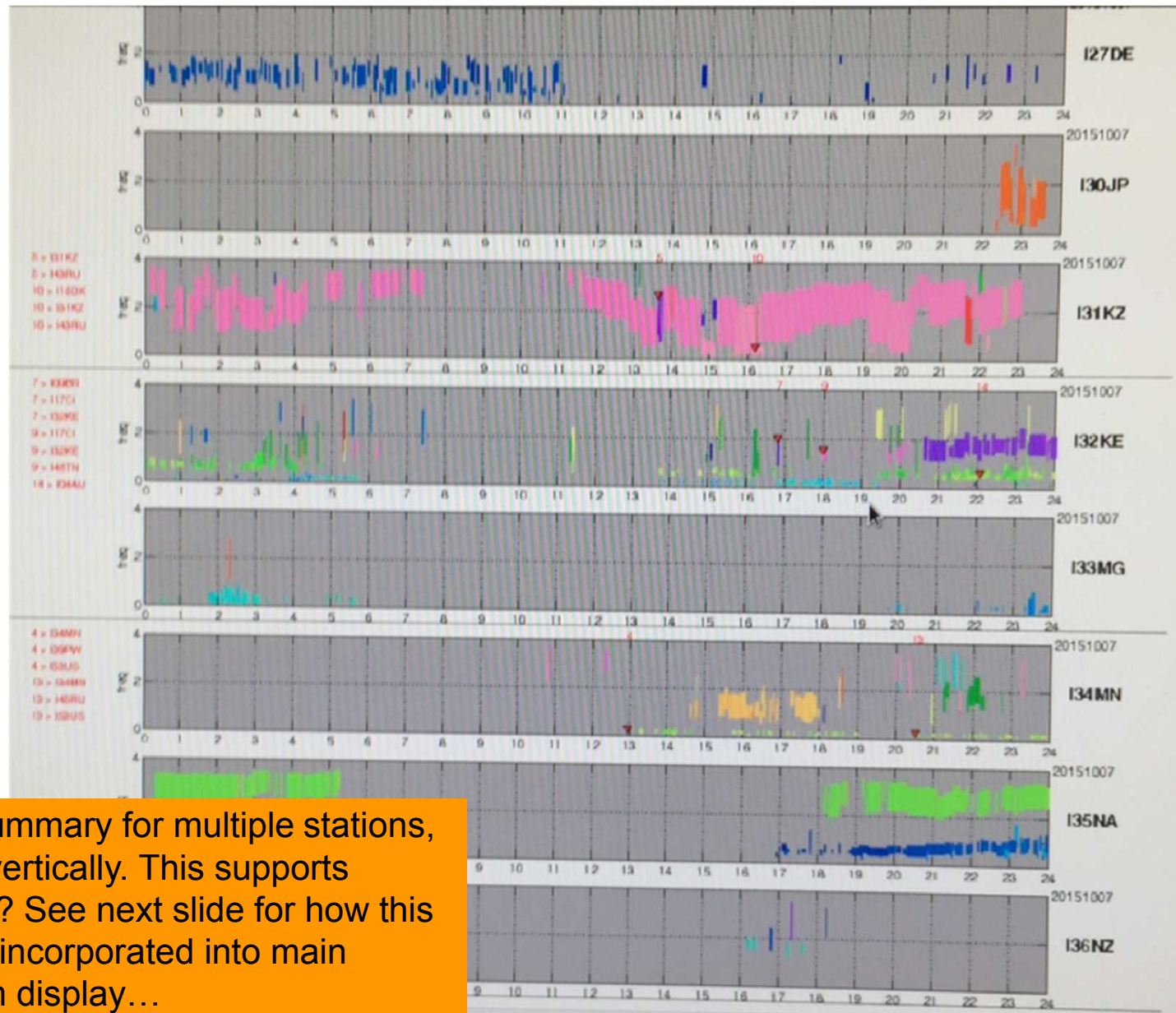
Select a period of time in the summary, see details for that time period below

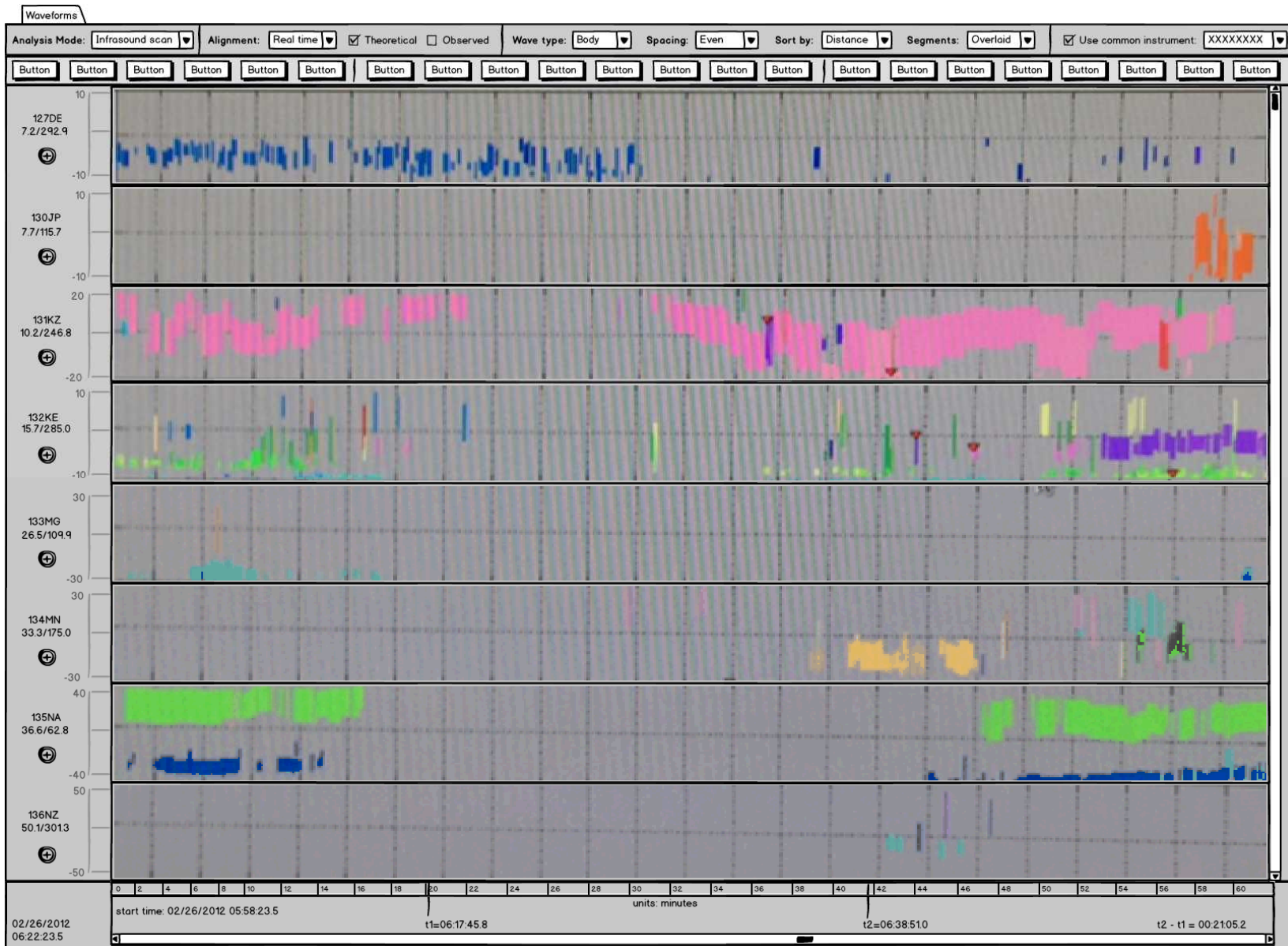
Key capabilities in the toolbars that we should capture?



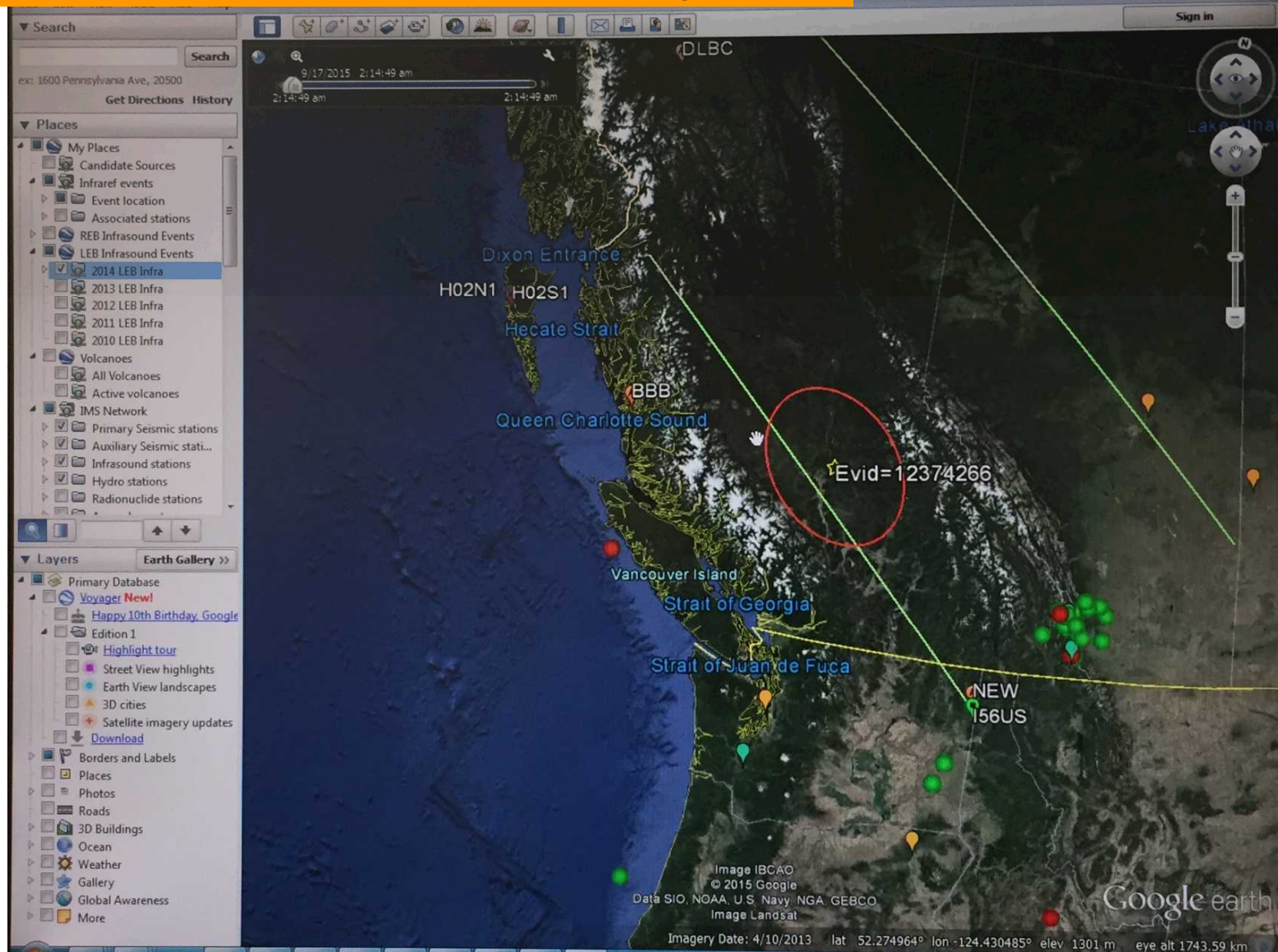
What is the black waveform at the bottom – a beam? Always shown vs. requested by Analyst?

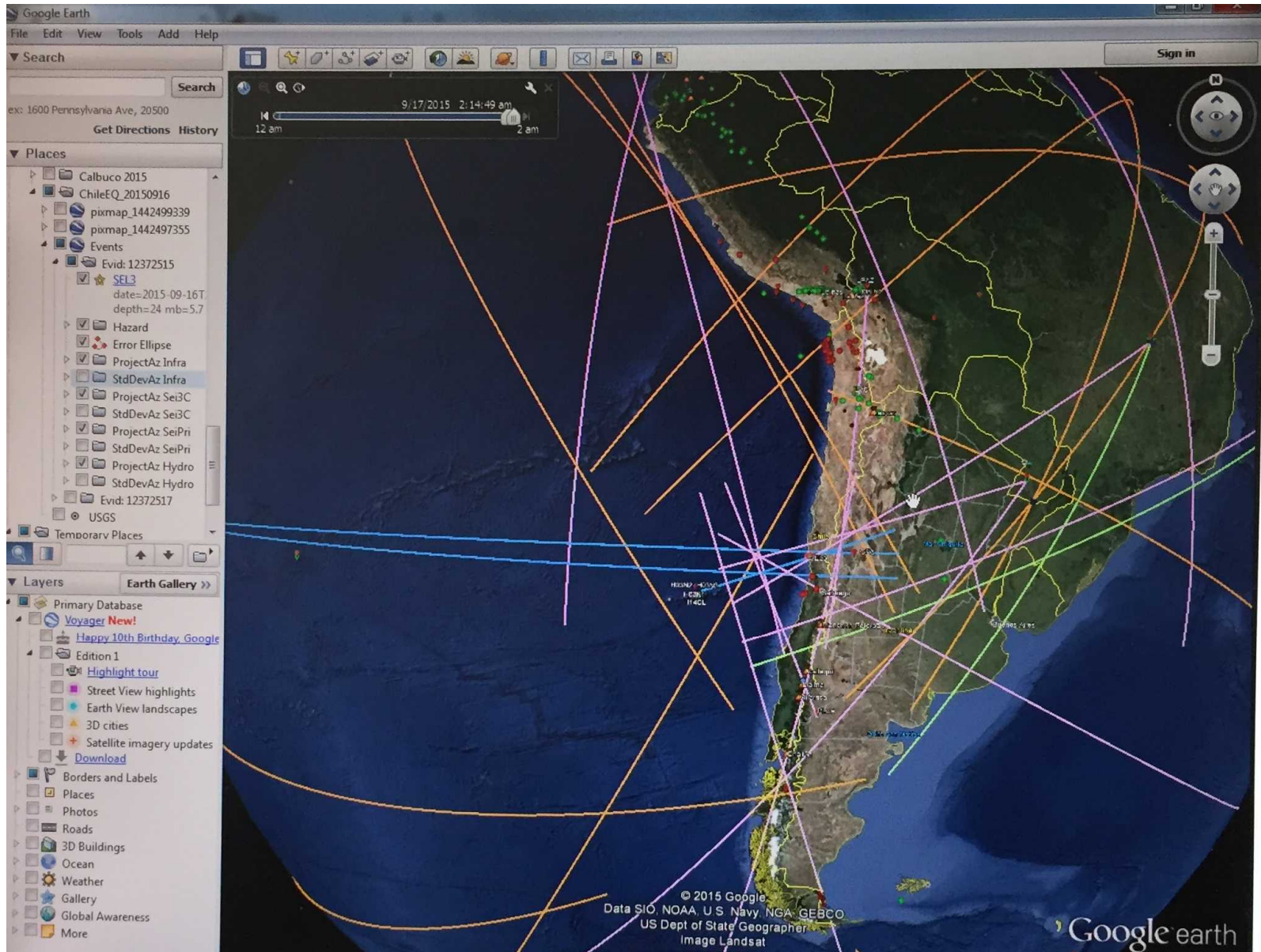
What are the “selected elements” in the polar plot?





Is there interaction between the map and the PMCC display?
Are we missing any key map layers or capabilities that
should be included to support infrasound processing?





Open questions

- Is there a scenario where it makes sense to view seismic and infrasound (and hydro?) data for the same event in the main waveform display at the same time?
 - If so, we need smart alignment options, e.g., align on first detection for the selected event, regardless of phase type?
- How do we reconcile working a limited time block when there are very different propagation times for seismic, hydro, and infrasound data?