

# PROCUREMENT AT ???

Introduce your Procurement Organization with:

- A Five Minute Elevator Pitch
- Max of 2 slides



RAND



JPL

The MIT logo is displayed in white, bold, sans-serif capital letters on a dark maroon rectangular background. Above this background, there are three horizontal bars of different colors: dark maroon, a lighter shade of maroon, and a light gray-blue.

MIT



# AEROSPACE



APL



SEI



MITRE





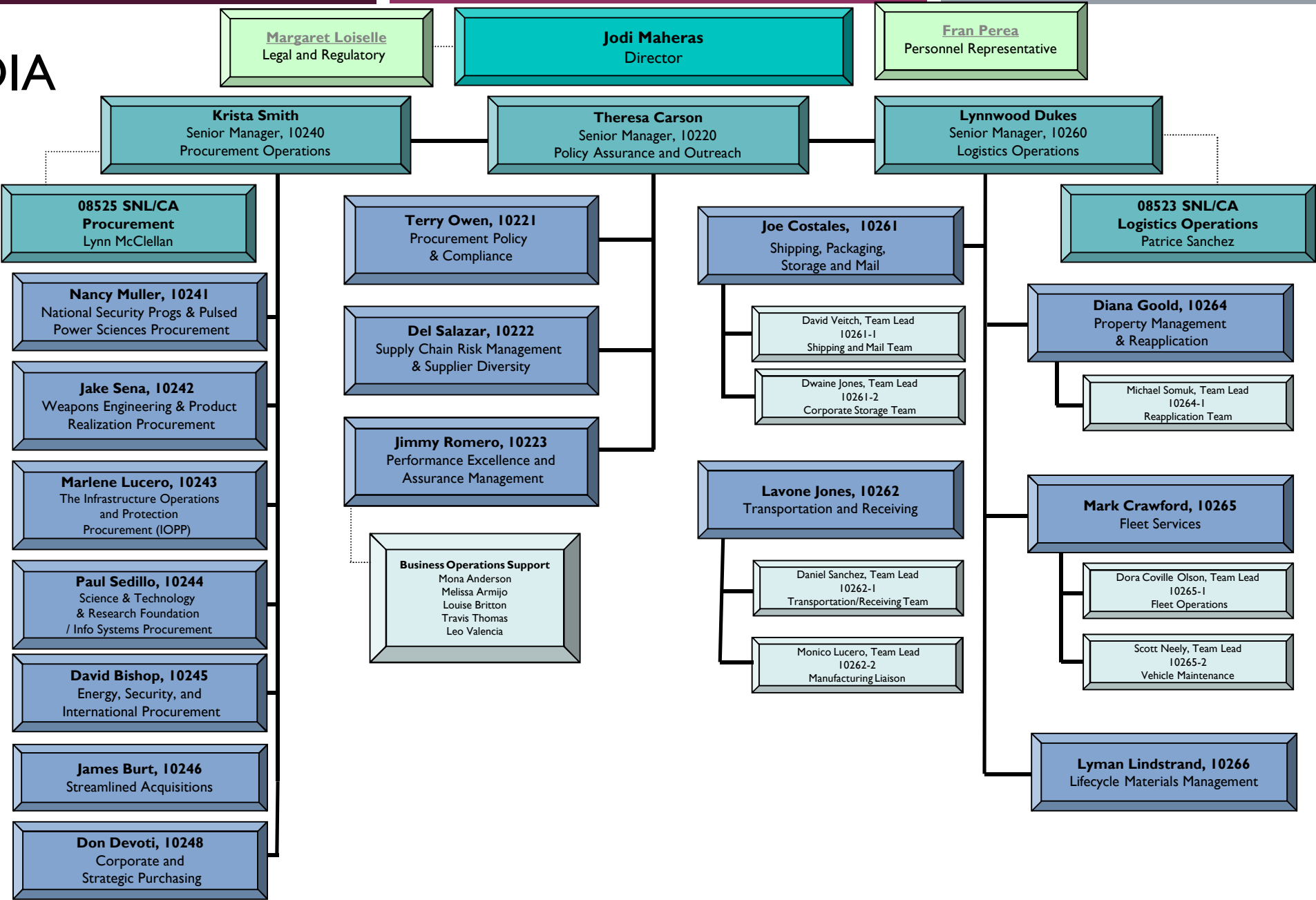
SANDIA

Jodi Maheras  
Supply Chain Director  
Sandia National Labs

Phone: 505-845-0610

Email: [jamaher@sandia.gov](mailto:jamaher@sandia.gov)

# SANDIA



# SANDIA



## Procurement

- \$1.0B obligated
- 200K transactions

8 Managers

103 Members of the Workforce

## Logistics

- \$1.5B assets managed
- 80K packages received and delivered
- 140K square feet storage

12 Managers

152 Members of the Workforce

## Policies, Assurance & Outreach

- ~40 corp. procedures
- ~80 guidelines
- 3.5K active suppliers managed
- ~600 contract files reviewed
- 150 hours of training provided to 10200 staff

4 Managers

29 Members of the Workforce

**24 Managers**

**284 Members of the Workforce**



CNA