

SANDIA REPORT

SAND2017-1260

Unlimited Release

Printed February 2017

2017 Annual Terrestrial Sampling Plan for Sandia National Laboratories/New Mexico on Kirtland Air Force Base

Stacy R. Griffith

Prepared by
Sandia National Laboratories
Albuquerque, New Mexico 87185 and Livermore, California 94550

Sandia National Laboratories is a multi-mission laboratory managed and operated by Sandia Corporation, a wholly owned subsidiary of Lockheed Martin Corporation, for the U.S. Department of Energy's National Nuclear Security Administration under contract DE-AC04-94AL85000.

Approved for public release; further dissemination unlimited.



Sandia National Laboratories

Issued by Sandia National Laboratories, operated for the United States Department of Energy by Sandia Corporation.

NOTICE: This report was prepared as an account of work sponsored by an agency of the United States Government. Neither the United States Government, nor any agency thereof, nor any of their employees, nor any of their contractors, subcontractors, or their employees, make any warranty, express or implied, or assume any legal liability or responsibility for the accuracy, completeness, or usefulness of any information, apparatus, product, or process disclosed, or represent that its use would not infringe privately owned rights. Reference herein to any specific commercial product, process, or service by trade name, trademark, manufacturer, or otherwise, does not necessarily constitute or imply its endorsement, recommendation, or favoring by the United States Government, any agency thereof, or any of their contractors or subcontractors. The views and opinions expressed herein do not necessarily state or reflect those of the United States Government, any agency thereof, or any of their contractors.

Printed in the United States of America. This report has been reproduced directly from the best available copy.

Available to DOE and DOE contractors from

U.S. Department of Energy
Office of Scientific and Technical Information
P.O. Box 62
Oak Ridge, TN 37831

Telephone: (865) 576-8401
Facsimile: (865) 576-5728
E-Mail: reports@osti.gov
Online ordering: <http://www.osti.gov/scitech>

Available to the public from

U.S. Department of Commerce
National Technical Information Service
5301 Shawnee Rd
Alexandria, VA 22312

Telephone: (800) 553-6847
Facsimile: (703) 605-6900
E-Mail: orders@ntis.gov
Online order: <http://www.ntis.gov/search>



SAND2017-1260
Unlimited Release
Printed February 2017

2017 Annual Terrestrial Sampling Plan for Sandia National Laboratories/New Mexico on Kirtland Air Force Base

Stacy R. Griffith
Environmental Programs
Sandia National Laboratories
P.O. Box 5800
Albuquerque, New Mexico 87185-MS0730

Abstract

The 2017 Annual Terrestrial Sampling Plan for Sandia National Laboratories/New Mexico on Kirtland Air Force Base has been prepared in accordance with the “Letter of Agreement Between Department of Energy, National Nuclear Security Administration, Sandia Field Office (DOE/NNSA/SFO) and 377th Air Base Wing (ABW), Kirtland Air Force Base (KAFB) for Terrestrial Sampling” (signed January 2017), Sandia National Laboratories, New Mexico (SNL/NM). The Letter of Agreement requires submittal of an annual terrestrial sampling plan.

**2017 Annual Terrestrial Sampling Plan for
Sandia National Laboratories/New Mexico on
Kirtland Air Force Base**

The “*Letter of Agreement Between Department of Energy, National Nuclear Security Administration, Sandia Field Office (DOE/NNSA/SFO) and 377th Air Base Wing (ABW), Kirtland Air Force Base (KAFB) for Terrestrial Sampling*” (signed January 2017), Sandia National Laboratories, New Mexico (SNL/NM) requires submittal of an annual terrestrial sampling plan by January 31 of the subject year.

This document details the 2017 collection of environmental media and deployment of dosimeters at locations on KAFB.

Sampling activities are performed in May and September of the subject year. Sampling consists of collecting appropriate volumes of soil, sediment, and vegetation as well as submitting the samples for analysis. In general, soil, sediment, and vegetation samples will be analyzed for select suite of metals, radionuclides, and tritium. High explosive analyses will be included at a limited number of sites. Any abnormalities in analytical results that could result in regulatory compliance issues will be coordinated with the 377th ABW, KAFB. In addition, coordination with the 377th ABW, KAFB will occur for the preparation of any press release. After analysis, validation, and review, the data will be published in the SNL/NM Annual Site Environmental Report (ASER). A copy of the ASER will be made available to the 377th ABW, KAFB and the public at the following website:

<http://www.sandia.gov/news/publications/environmental/index.html>

Specifics of the sampling locations, media, and analytical methods are provided in the attached tables. A map of the sampling locations is also provided. This information is from the “*Terrestrial Surveillance Program Plan*” (Revision 6), Sandia National Laboratories, Albuquerque, New Mexico (March, 2015). The following are included:

- Table 1 Terrestrial Sampling Locational Information
- Table 2 Sampling Media and Analytical Parameters
- Table 3 Analytical Methods
- Figure 1 Terrestrial Sampling Locations on KAFB

Table 1. Terrestrial Sampling Locational Information

Location Number	Sampling Location	Township, Range, Section	X-Easting (NAD 83)	Y-Northing (NAD 83)
S-1	Pennsylvania Ave	9N, 4E, 8	1551156.93	1465679.31
S-7	Unnamed Arroyo (north of TA-V)	9N, 4E, 17	1555133.55	1455506.98
S-20	TA-IV (southwest)	9N, 4E, 5	1551789.48	1467245.18
S-33	Coyote Springs (triplicate)	9N, 4E, 24	1574275.53	1455014.85
S-34	Lurance Canyon Burn Site	9N, 5E, 16	1593567.21	1457230.81
S-48	Tijeras Arroyo (east of TA-II)	9N, 4E, 5	1555575.75	1468811.67
S-51	TA-V (north of culvert)	9N, 4E, 17	1554602.09	1455450.10
S-55	Large Melt Facility, Building 9939	9N, 4E, 27	1563282.88	1446748.74
S-72	Arroyo del Coyote (midstream)	9N, 4E, 24	1574951.62	1455094.59
S-74N	TA-IV, Tijeras Arroyo, midstream (triplicate)	9N, 4E, 5	1554778.75	1467420.93
S-75	Arroyo del Coyote (downstream)	9N, 4E, 16	1555742.95	1459371.34
S-76	Thunder Range (north)	9N, 4E, 21	1558297.09	1450369.73
S-77	Thunder Range (south)	9N, 4E, 33	1560186.31	1443176.24
S-83	Tijeras Arroyo Groundwater Well	9N, 4E, 5	1554069.66	1468689.55
S-85	Arroyo del Coyote Cable Site	9N, 5E, 17	1587981.92	1456933.89
S-86	Corner of Wyoming and S Street	9N, 4E, 5	1550552.83	1468894.92
S-91	Background Arroyo Near SWMU-87	9N, 4E, 25	1577654.49	1449275.82
S-93	Thunder Range Explosive Test Area	9N, 4E, 32	1554775.09	1441102.63
S-94	Thunder Range, southeast of Range 5	9N, 4E, 33	1557329.16	1440451.75
P-4	Isleta Reservation Gate	8N, 4E, 5	1555448.68	1436450.75
P-5	McCormick Gate	9N, 4E, 31	1544925.55	1444470.49
P-16	Four Hills	9N, 4E, 3	1562799.41	1470976.79
P-18	North Perimeter Road	10N, 4E, 29	1553743.93	1479895.00
P-19	USGS Seismic Center Gate	8N, 5E	1577549.79	1436162.97
P-39	Northwest DOE Complex	10N, 4E, 31	1547832.67	1474537.64
P-40	TA-I, northeast	10N, 4E, 32	1552607.61	1475432.05
P-58	North KAFB Housing	10N, 4E, 32	1554019.71	1476010.64
P-59	Zia Park (southeast)	10N, 4E, 31	1547530.39	1472786.53
P-63	No Sweat Boulevard	9N, 5E, 8	1588636.54	1462325.75
P-64	North Manzano Base	9N, 4E, 1	1571570.17	1469827.95
P-73	Tijeras Arroyo (upstream)	9N, 4E, 4	1557105.68	1470960.41
P-81	KAFB (west fence)	9N, 4E, 18	1544940.74	1455690.35
P-82	Commissary	10N, 4E, 30	1546847.95	1477248.01
P-87	South corner KAFB	8N, 4E, 6	1545302.26	1437592.35

See notes at end of tables.

Table 2. Sampling Media and Analytical Parameters

Location Number	Sampling Location	Soil	Sed	Veg	TLD	Tritium	Gamma Spec	TS Metals	Other
S-1	Pennsylvania Ave	1			1	1	1	1	
S-7	Unnamed Arroyo (north of TA-V)				1				
S-20	TA-IV (southwest)				1				
S-33	Coyote Springs	3		3		1	1	1	
S-34	Lurance Canyon Burn Site	1		1		1	1	1	
S-48	Tijeras Arroyo (east of TA-II)				1				
S-51	TA-V (north of culvert)	1		1		1	1	1	
S-55	Large Melt Facility, Building 9939	1		1		1	1	1	
S-72	Arroyo del Coyote (midstream)		1			1	1	1	
S-74N	TA-IV, Tijeras Arroyo, midstream		3			1	1	1	
S-75	Arroyo del Coyote (downstream)		1			1	1	1	
S-76	Thunder Range (north)	1				1	1		
S-77	Thunder Range (south)	1				1	1		
S-83	Tijeras Arroyo Groundwater Well		1			1	1	1	
S-85	Arroyo del Coyote Cable Site		1			1	1	1	
S-86	Corner of Wyoming and S Street	1		1		1	1		
S-91	Background Arroyo Near SWMU-87		1			1	1	1	
S-93	Thunder Range Explosive Test Area	1							HE
S-94	Thunder Range, southeast of Range 5	1							HE
P-4	Isleta Reservation Gate	1		1	1	1	1	1	
P-5	McCormick Gate	1		1	1	1	1		
P-16	Four Hills	1		1	1	1	1	1	
P-18	North Perimeter Road				1				
P-19	USGS Seismic Center Gate	1			1	1	1	1	
P-39	Northwest DOE Complex				1				
P-40	TA-I, northeast				1				
P-58	North KAFB Housing	1		1		1	1	1	
P-59	Zia Park (southeast)	1				1	1		
P-63	No Sweat Boulevard	1				1	1		
P-64	North Manzano Base	3				1	1	1	
P-73	Tijeras Arroyo (upstream)		1			1	1	1	
P-81	KAFB (west fence)	1			1	1	1	1	
P-82	Commissary	1		1		1	1	1	
P-87	South corner KAFB	1				1	1	1	

See notes at end of tables.

Table 3. Analytical Methods

Analyte	Analytical method	Matrix	Notes
Total Analyte List (TAL) Metals + Total Uranium (minus mercury)	SW846-6010/6020 ^a , or equivalent	Soil, sediment, vegetation	Reporting the following: Aluminum, Antimony, Arsenic, Beryllium, Cadmium, Chromium, Copper, Iron, Lead, Magnesium, Nickel, Selenium, Silver, Thallium, Zinc
Gamma Spectroscopy (short list)	HASL-300 Ga-01-R ^b , or equivalent	Soil, sediment, vegetation	
Tritium	EPA 906.0 ^c , or equivalent	Soil, sediment, vegetation	
High Explosives	SW846 8330A ^a , or equivalent	Soil	

NOTES: ^aEPA 1986 (and updates), Test Methods for Evaluating Solid Waste, Physical/Chemical Methods, SW-846, 3rd ed., Rev. 1, U.S. Environmental Protection Agency, Washington, D.C.

^bDOE 1997, Environmental Measurements Laboratory, 4.5.2 *Radiochemistry*, EML Procedures Manual, 28th ed., Vol. 1, HASL-300, Rev. 0, 1997.

^cEPA, EMSL. 1980. "Method 906.0: Tritium in Drinking Water." *Prescribed Procedures for Measurement of Radioactivity in Drinking Water*, EPA/600/4/80/032.

Ave = Avenue
 Bldg = Building
 C- = Community (off-site) sample location with number
 DOE = U.S. Department of Energy
 E = East
 EPA = Environmental Protection Agency
 Gamma Spec = Gamma spectroscopy
 HASL = Health and Safety Laboratory
 HE = High Explosive
 KAFB = Kirtland Air Force Base
 N = North
 NE = Northeast
 NW = Northwest
 P- = Perimeter sample location with number
 RMWMU = Radioactive and Mixed Waste Management Unit
 S- = On-site sample location with number
 SE = Southeast
 Sed = Sediment
 SWMU = Solid Waste Management Unit
 TA = Technical Area
 TAL = Total Analyte List
 TAL+ = Target Analyte List (which includes Aluminum, Antimony, Arsenic, Barium, Beryllium, Cadmium, Calcium, Chromium, Cobalt, Copper, Iron, Lead, Magnesium, Manganese, Nickel, Potassium, Selenium, Silver, Sodium, Thallium, Vanadium, and Zinc) plus total Uranium
 TS Metals = Terrestrial Surveillance Metals (includes Aluminum, Antimony, Arsenic, Beryllium, Cadmium, Chromium, Copper, Iron, Lead, Magnesium, Nickel, Selenium, Silver, Thallium, Zinc, Uranium [total])
 TLD = Thermoluminescent Dosimeters
 USGS = United States Geological Society
 Veg = Vegetation

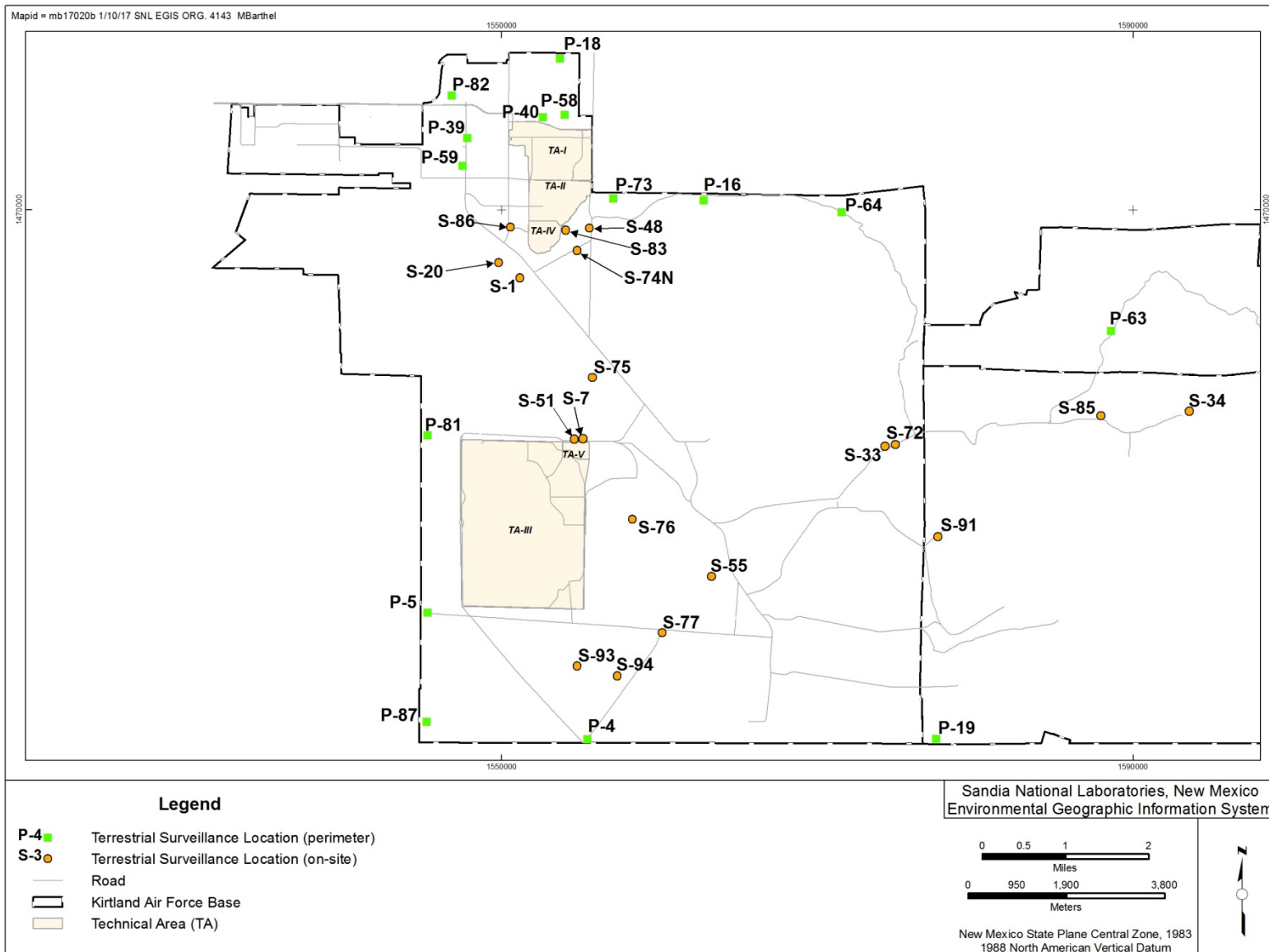


Figure 1. Terrestrial Sampling Locations on KAFB Property

Sandia National Laboratories Distribution

1	MS 0141	A. Blumberg, 11100
1	MS 0730	S. Salinas, 4143
1	MS0730	S, Griffith, 4143
1	MS 0899	Technical Library, 9536
1	MS 1043	ES&H Library, 4135

