

HORIZONS

The Planview Customer Conference

October 14–16 2015 | Austin, Texas

SUPERCHARGED APPLICATION PORTFOLIO & IT ASSET MANAGEMENT

WILLIAM J ROBINSON

SANDIA NATIONAL LABS



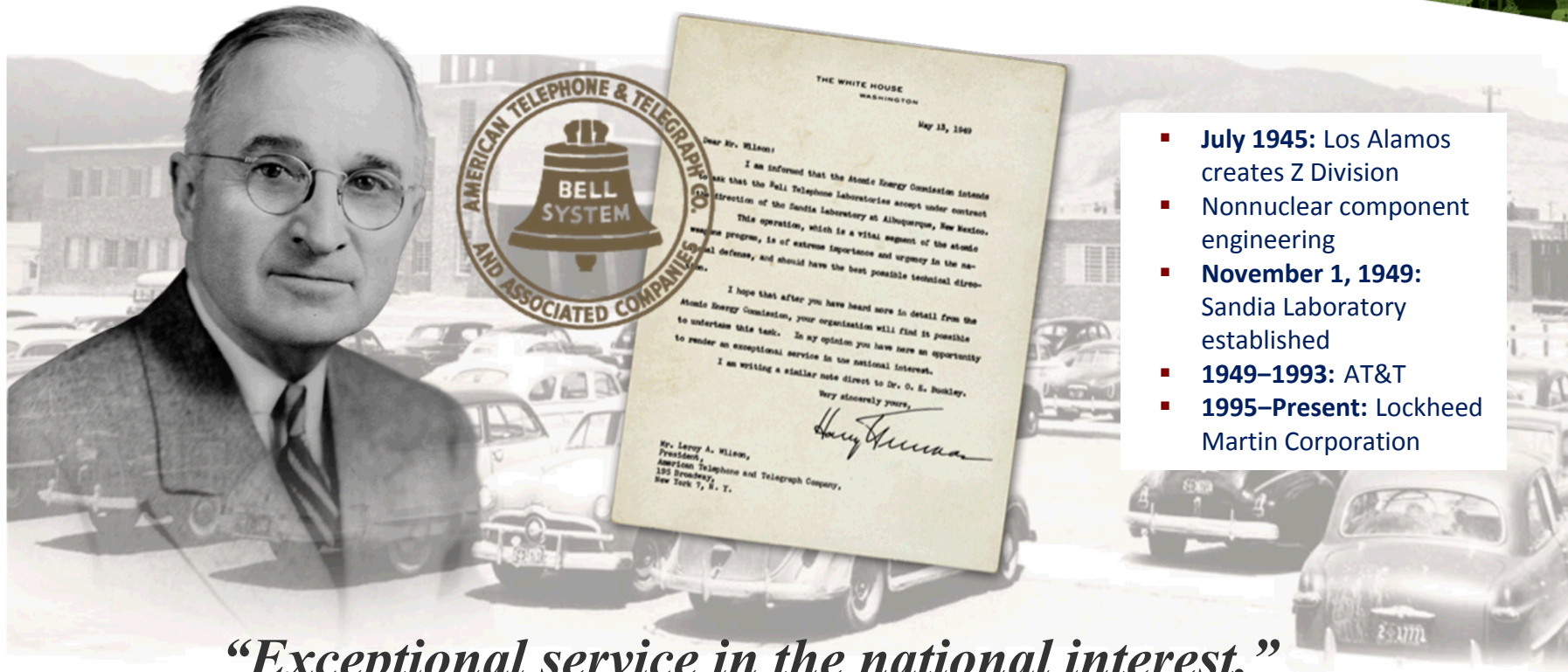
U.S. DEPARTMENT OF
ENERGY



Sandia National Laboratories

**SANDIA NATIONAL LABORATORIES IS A MULTI-PROGRAM LABORATORY
MANAGED AND OPERATED BY SANDIA CORPORATION, A WHOLLY
OWNED SUBSIDIARY OF LOCKHEED MARTIN CORPORATION, FOR THE
U.S. DEPARTMENT OF ENERGY'S NATIONAL NUCLEAR SECURITY
ADMINISTRATION UNDER CONTRACT DE-AC04-94AL85000.**

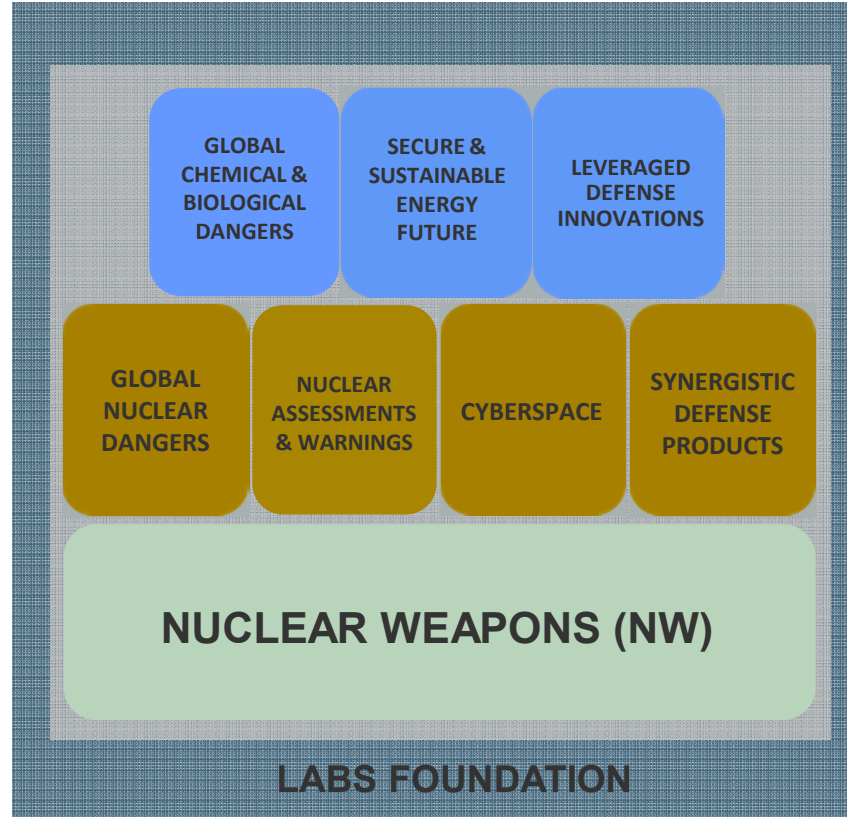
SANDIA'S HISTORY...



- **July 1945:** Los Alamos creates Z Division
- Nonnuclear component engineering
- **November 1, 1949:** Sandia Laboratory established
- **1949–1993:** AT&T
- **1995–Present:** Lockheed Martin Corporation

“Exceptional service in the national interest.”

**OUR
NATIONAL
SECURITY
MISSIONS**



**SINCE THE 1950s,
SANDIA'S NON-
NW MISSION
WORK HAS
INCREASED
FROM 0% TO 60%**

WHERE ARE WE?

Albuquerque, NM



Livermore, CA



Kauai, HI



*Waste Isolation Pilot
Plant,
Carlsbad, NM*



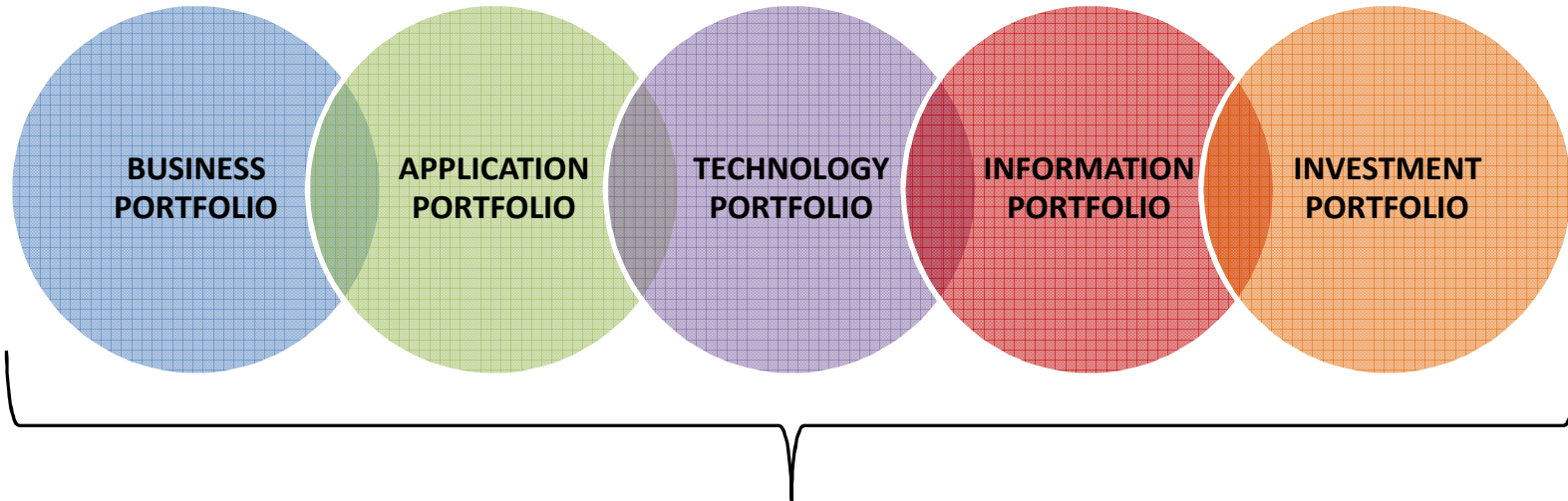
*Pantex Plant,
Amarillo, TX*



*Tonopah,
NV*

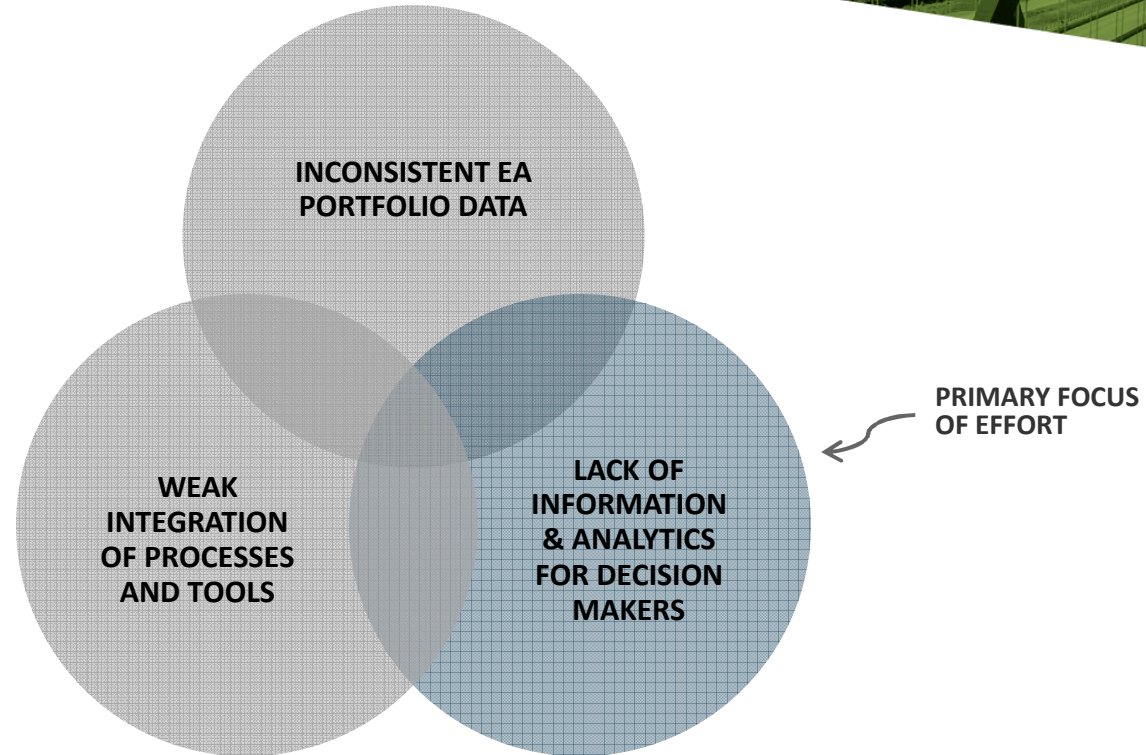
**ON-SITE
WORKFORCE
OF 12251
EMPLOYEES
(AND ABOUT A DOZEN
EXTRATERRESTRIALS)**

**{ ENTERPRISE ARCHITECTURE: A CONCEPTUAL BLUEPRINT
THAT DEFINES THE STRUCTURE OF AN ORGANIZATION. }**




**“THE INTENT OF ENTERPRISE ARCHITECTURE (EA) IS TO DETERMINE HOW AN
ORGANIZATION CAN MOST EFFECTIVELY ACHIEVE ITS CURRENT AND FUTURE
OBJECTIVES.”**

PREVIOUS STATE OF SANDIA'S EA PROGRAM



**WE STARTED WITH A CLEARLY
ARTICULATED PURPOSE:**

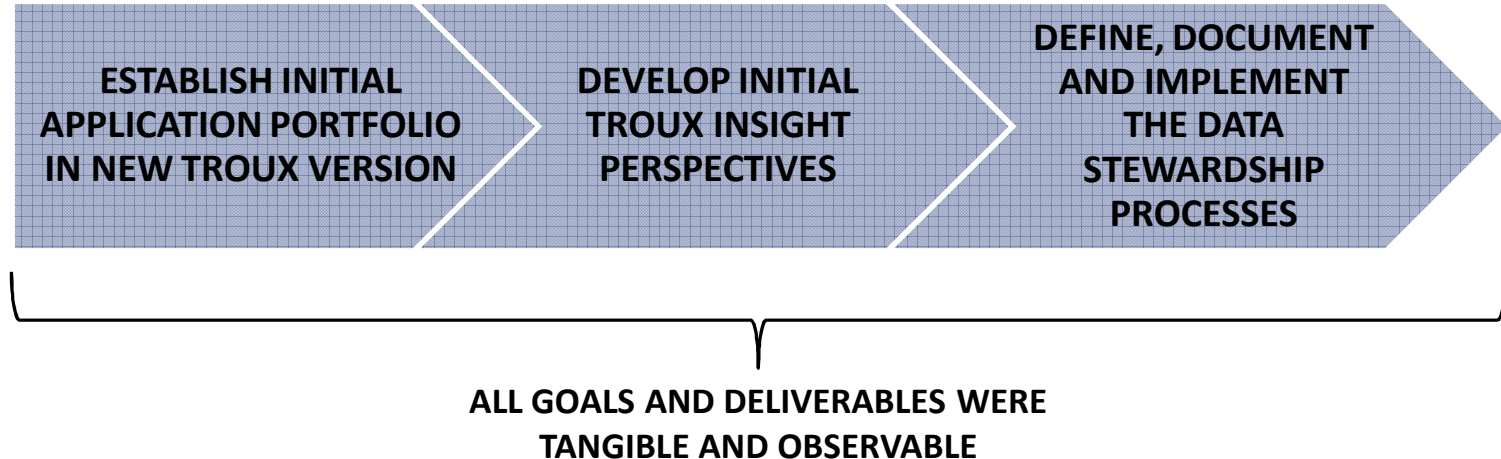
A curved arrow pointing from the text "WE STARTED WITH A CLEARLY ARTICULATED PURPOSE:" down to the green box containing the goal.

**DEPLOY AND EXPLOIT THE RIGHT TOOLS AND THE RIGHT
PROCESSES, IN A LIGHTWEIGHT AND AGILE MANNER, TO
MORE EFFECTIVELY EXPOSE, ASSESS, AND MANAGE
SANDIA'S EA PORTFOLIOS.**

A curved arrow pointing from the green box containing the goal down to the text "NOW...HOW DID WE GET THERE?".

NOW...HOW DID WE GET THERE?

BE SPECIFIC IN TERMS OF SCOPE...



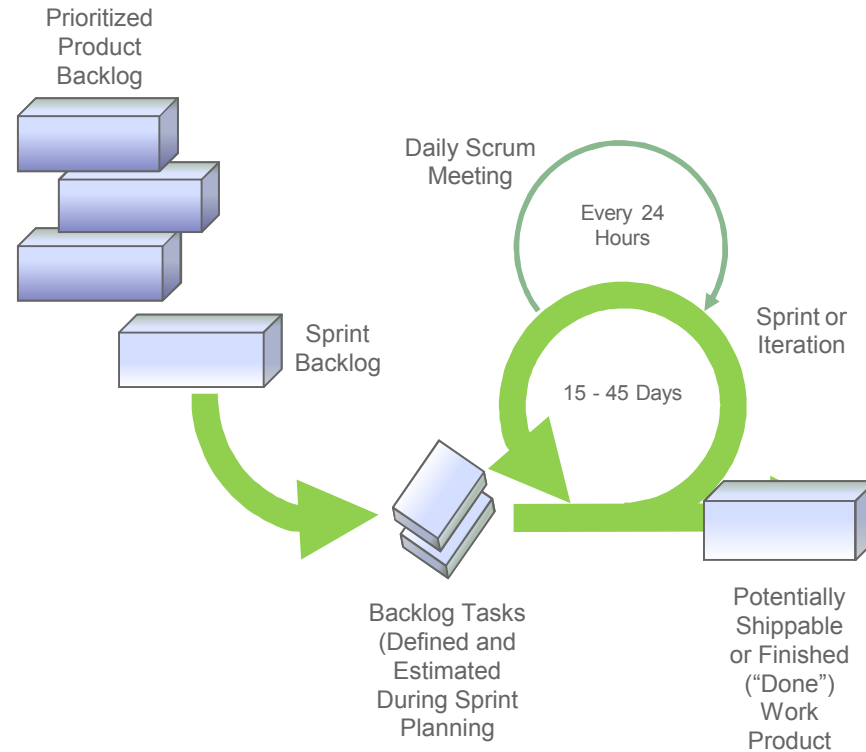
BE SPECIFIC IN TERMS OF SCOPE (CONT'D)...

THIS IS THE ULTIMATE
STATE OF A ROBUST EA
PROGRAM

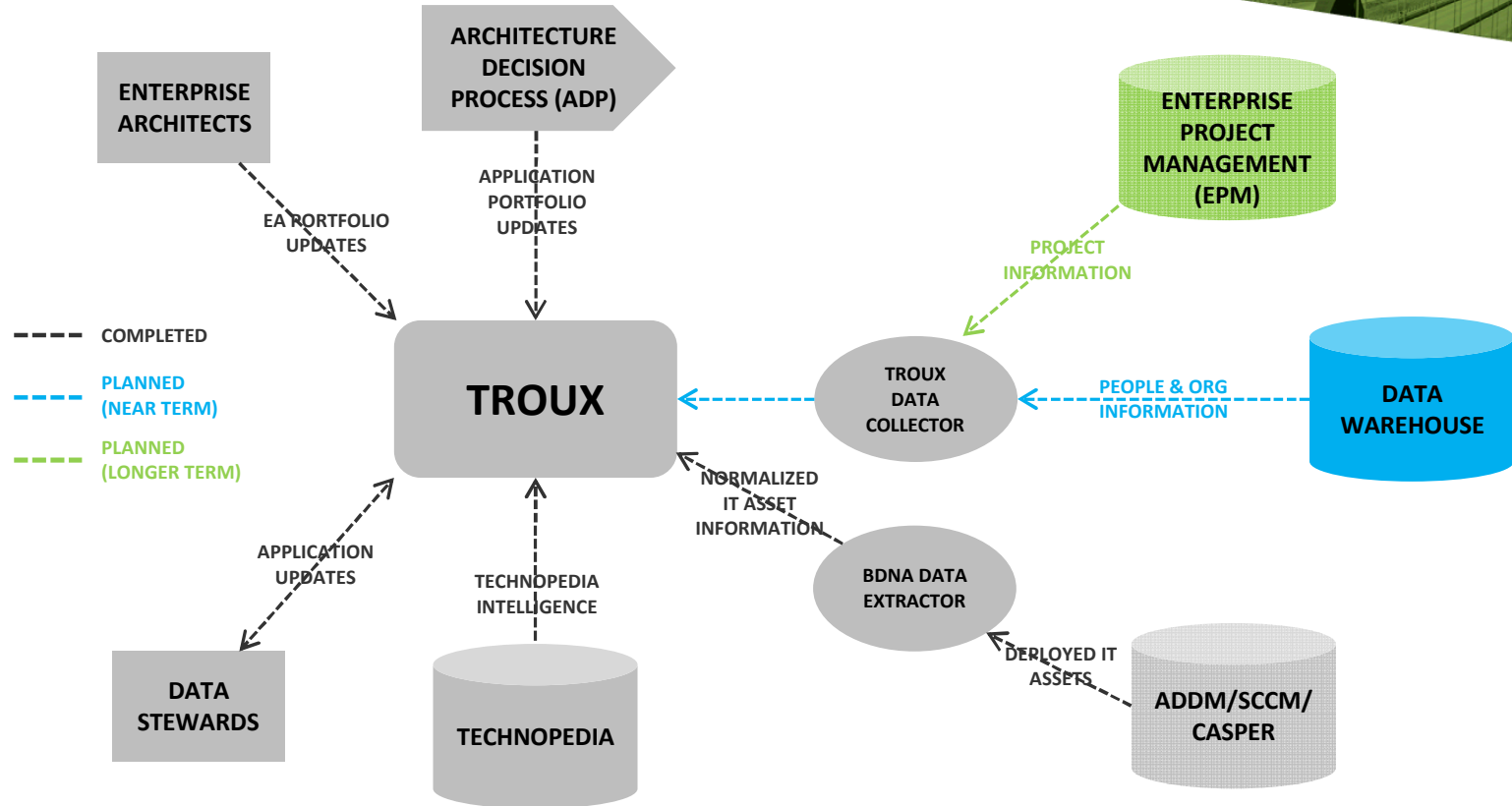


ALL GOALS AND DELIVERABLES WERE
TANGIBLE AND OBSERVABLE

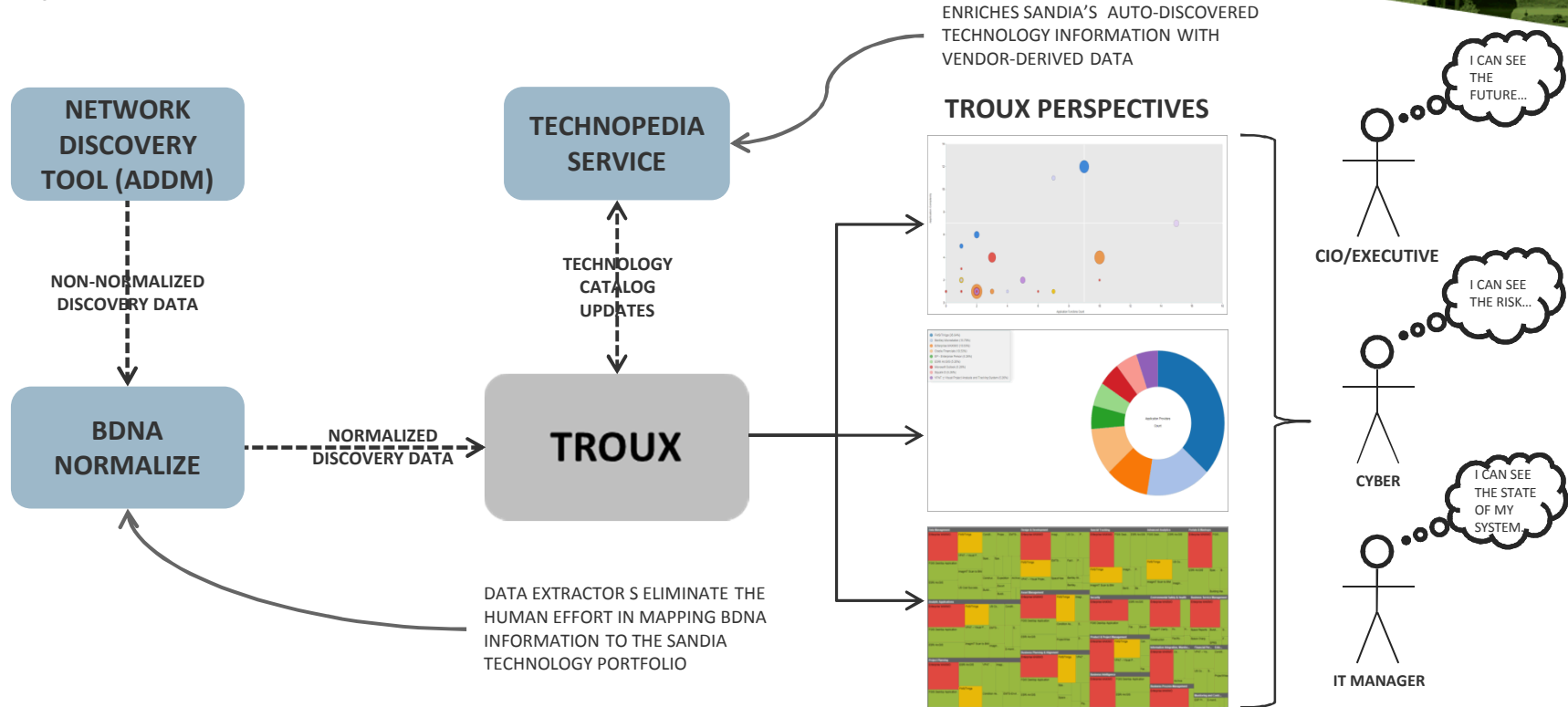
EMPLOY A PROCESS THAT GETS TO DONE...FAST...



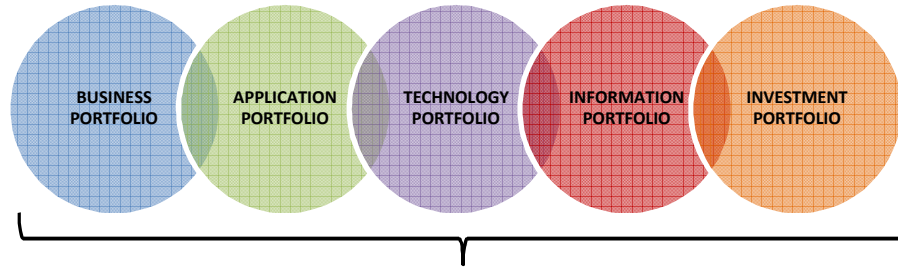
TROUP DATA SOURCES



TROUX DEPLOYED W/NORMALIZATION ENGINE

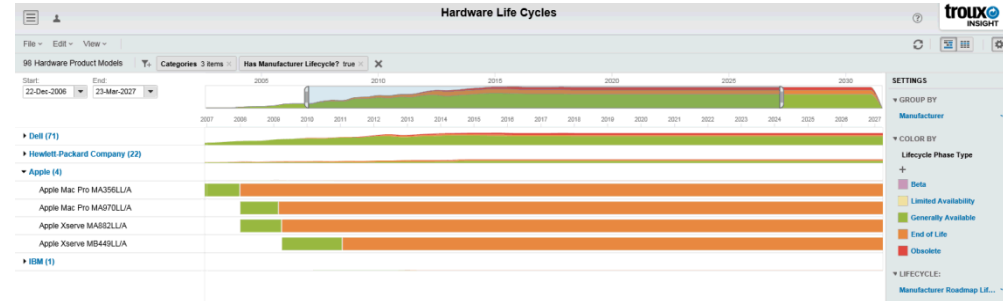


TROUX 101

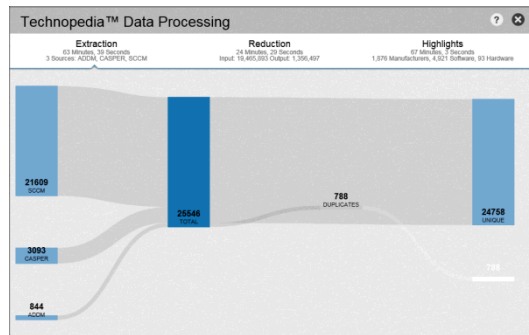


TROUX ENABLES THE MANAGEMENT OF THE ORGANIZATION'S PORTFOLIOS...

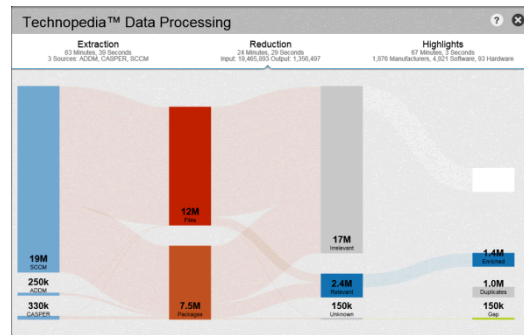
**AND EXPOSES PORTFOLIO
INFORMATION TO ENABLE
DATA-DRIVEN DECISION
MAKING**



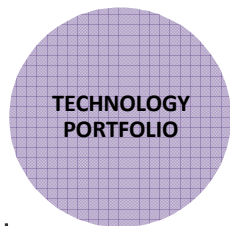
BDNA 101



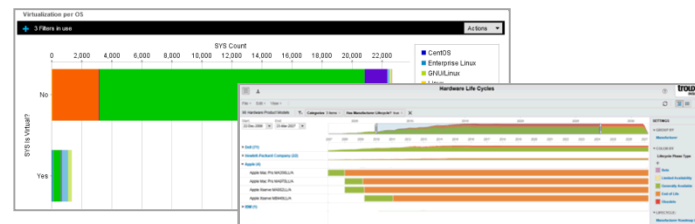
CULLS AUTO-DISCOVERED INFORMATION FROM 1...n SYSTEMS



RENDERS AUTO-DISCOVERED DATA CONSISTENT & COMPLETE AND ENRICHES IT ASSET INFORMATION (INCLUDING STANDARDIZED CATEGORIZATIONS)



POPULATES TROUX TECHNOLOGY PORTFOLIO (VIA INTEGRATION UTILITY)



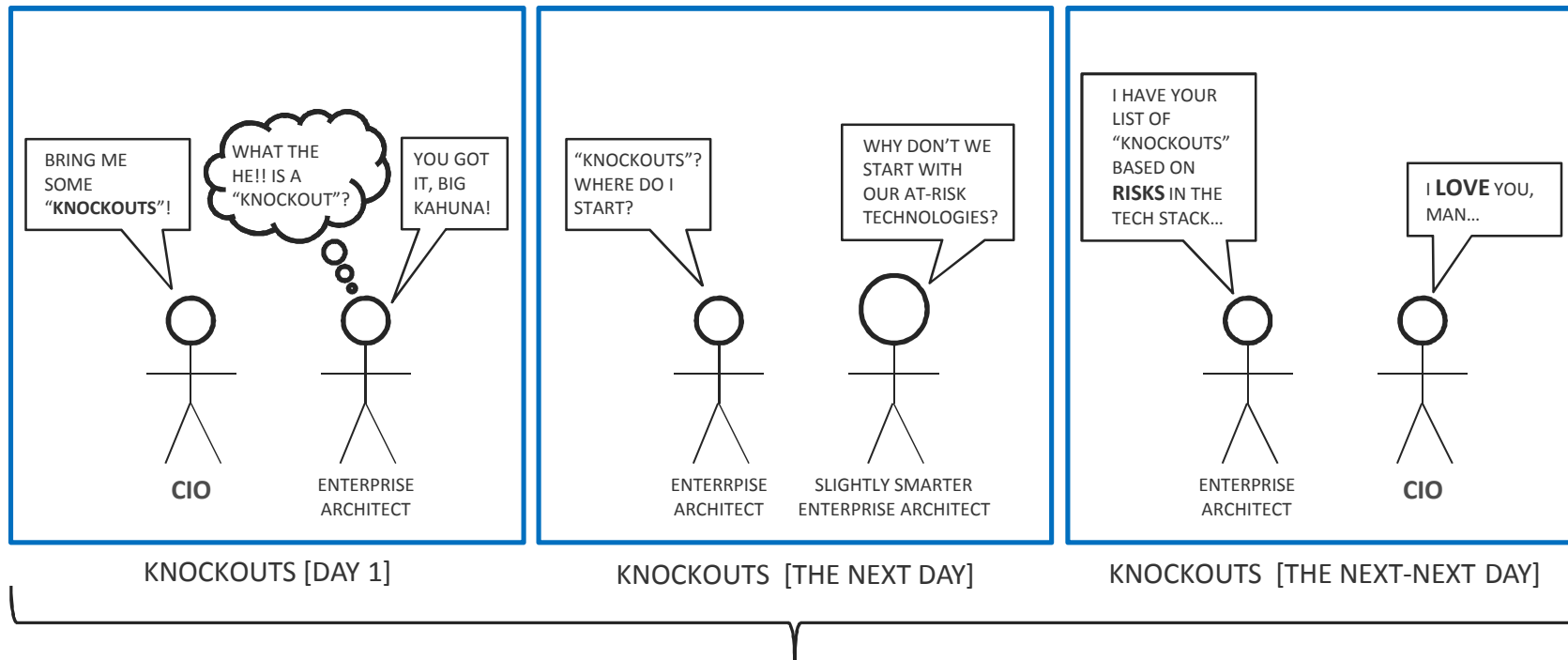
ENABLES VIEWING OF ENRICHED TECHNOLOGY INFORMATION IN BOTH TROUX AND BDNA ANALYZE

**BUT EVEN IF WE IMPLEMENTED THIS
SOLUTION SET – A KEY QUESTION WOULD
REMAIN...**



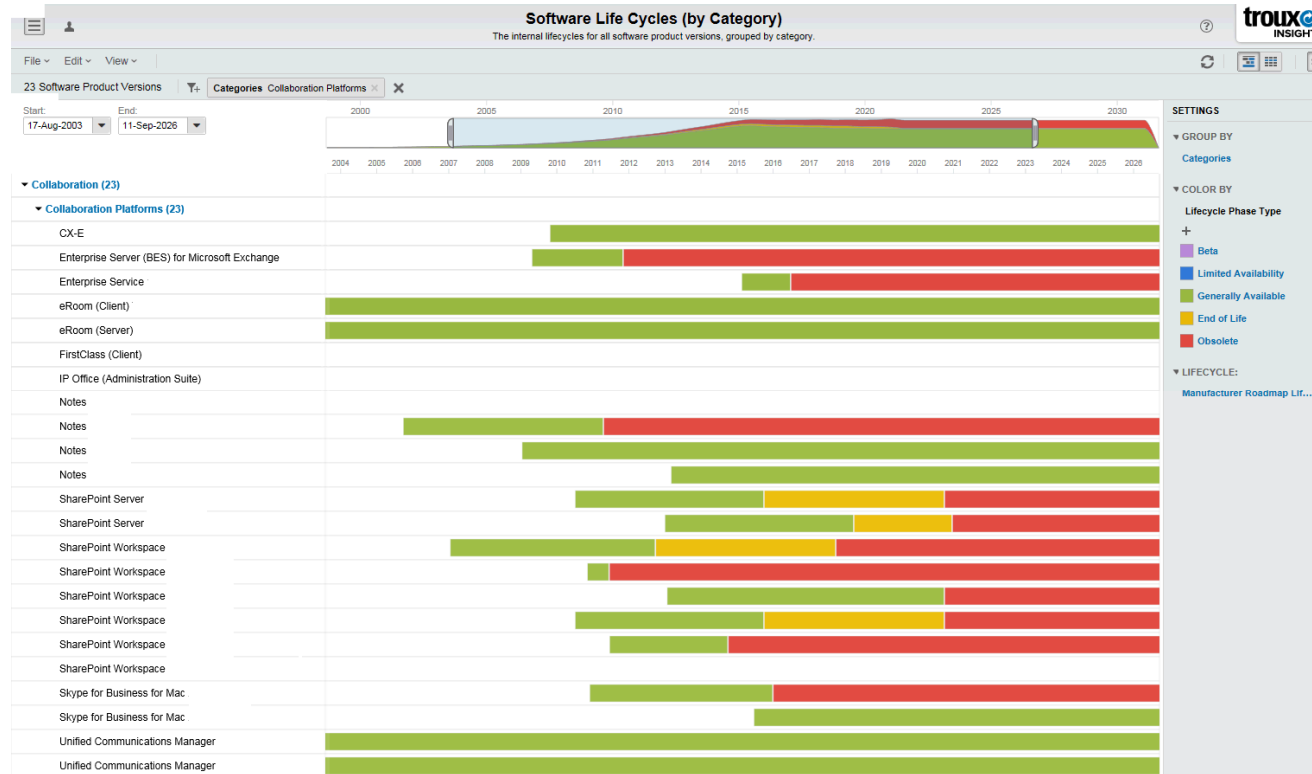
**WHAT DO WE WANT OUR ENTERPRISE
ARCHITECTURE PROGRAM TO LOOK LIKE?**

TROUX & BDNA VALUE – SCENARIO #1

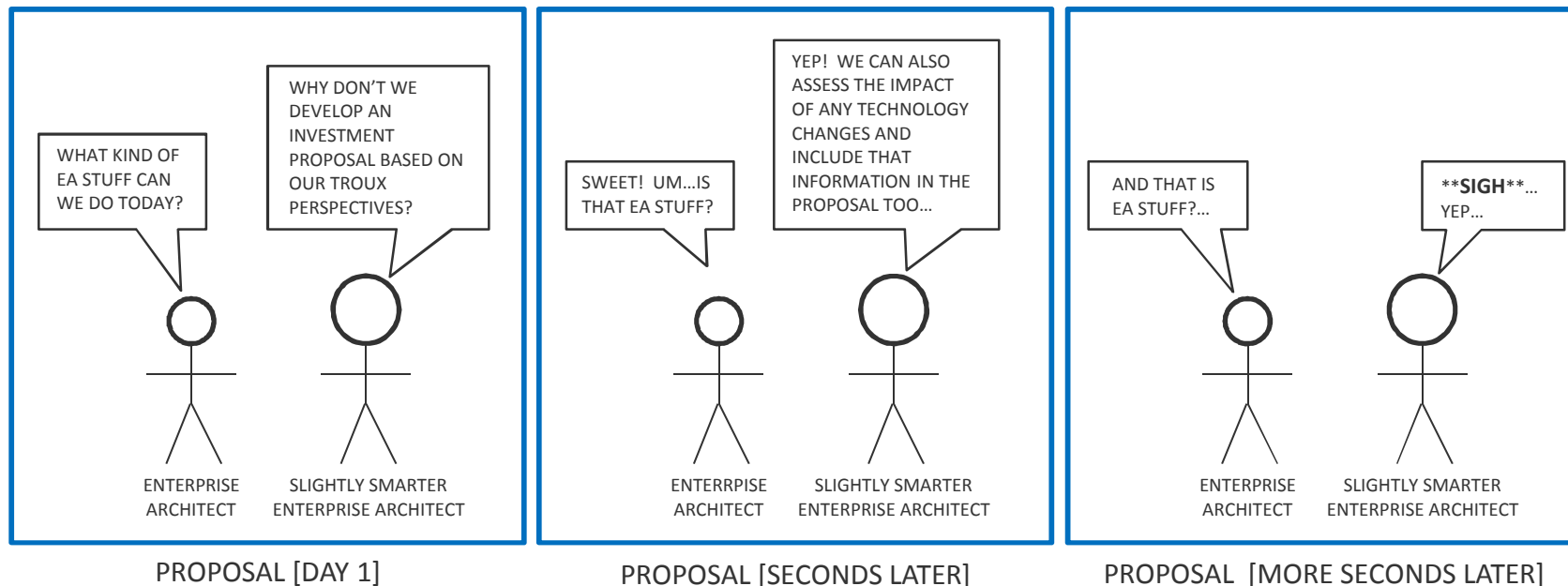


RISK-BASED PERSPECTIVES CAN DRIVE "KNOCKOUT" PRIORITIES

LIFE CYCLES AND RISK PERSPECTIVE



TROUX & BDNA VALUE – SCENARIO #2



PORTFOLIO-BASED PERSPECTIVES CAN DRIVE PROPOSAL DEVELOPMENT AND INVESTMENT DECISIONS

INFORMATION EVOLUTION

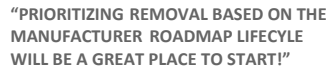
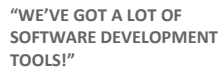


HW Category	HW Subcategory	HW Manufacturer	HW Product	HW Model	HW EOL Date	SYS Host Name
Computers	Servers	Hewlett-Packard Company	ProLiant BL460c G1 Server Blade	416653-B21	03/05/2010	

HW Category	HW Subcategory	HW Manufacturer	HW Product	HW Model	HW EOL Date	SYS Count
Computers	Servers	Hewlett-Packard Company	ProLiant BL460c G1 Server Blade	416653-B21	03/05/2010	10

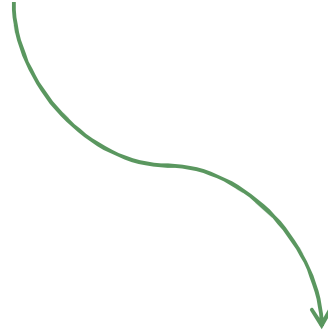
HW Category	HW Subcategory	HW Manufacturer	HW Product	HW Model	HW EOL Date	SYS Host Name	SYS Name
Computers	Servers	Hewlett-Packard Company	ProLiant BL460c G1 Server Blade	416653-B21	03/05/2010		(Integrated) Lights-Out Online Configuration (iLO)
							Agent for Microsoft Windows
							Apache Portable Runtime (APR)
							Array Configuration Utility (ACU)
							Autoscan
							Automate
							Avahi
							Backup & Recovery
							Beem
							Binutils
							Blain
							Busutils
							CUPS
							Cern
							Carbon
							Client Automation Tuner
							Cluster File System 2 (CIFS2)
							Command Line Array Configuration Utility
							Concurrent Version System (CVS)
							Conutils
							Cop
							Diffutils
							Docutils
							E2fsprogs
							Emacs
							Emulated Sound Daemon (Esound)
							Enterprise Administrator Service
							Eye of GNOME

TROUX AND BDNA CAN BE USED IN CONCERT TO PROVIDE DECISION MAKERS WITH
RAPID, HIGH-VALUE ANALYTICS



QUESTION:

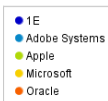
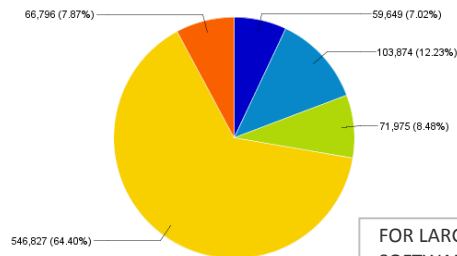
**WHERE DOES THE MAJORITY OF RISK (AND
COMPLEXITY) EXIST IN YOUR EA PORTFOLIO?**



ANSWER (AND ANOTHER QUESTION):

**IT IS MOST LIKELY THAT THE MAJORITY OF RISKS AND
COMPLEXITIES ARE IN YOUR TECHNOLOGY PORTFOLIO...BUT WHY?**

THE SHEER VOLUME AND SCOPE OF THE TECHNOLOGY PORTFOLIO CREATES RISK AND COMPLEXITY

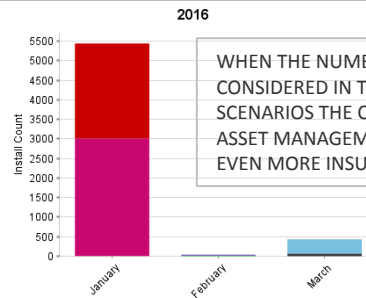
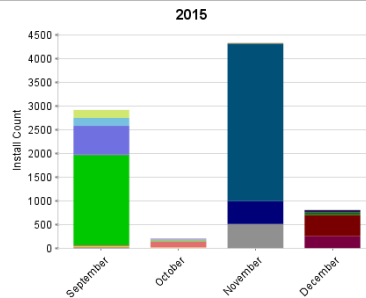


FOR LARGER ORGANIZATIONS THE NUMBER OF SOFTWARE INSTALLATIONS CAN BE DAUNTING

THE TROUX-BDNA SOLUTION ALLOWS ORGANIZATION TO EFFECTIVELY MANAGE THEIR IT ASSETS BY CREATING TRANSPARENCY AND CLARITY WITHIN THE TECHNOLOGY PORTFOLIO

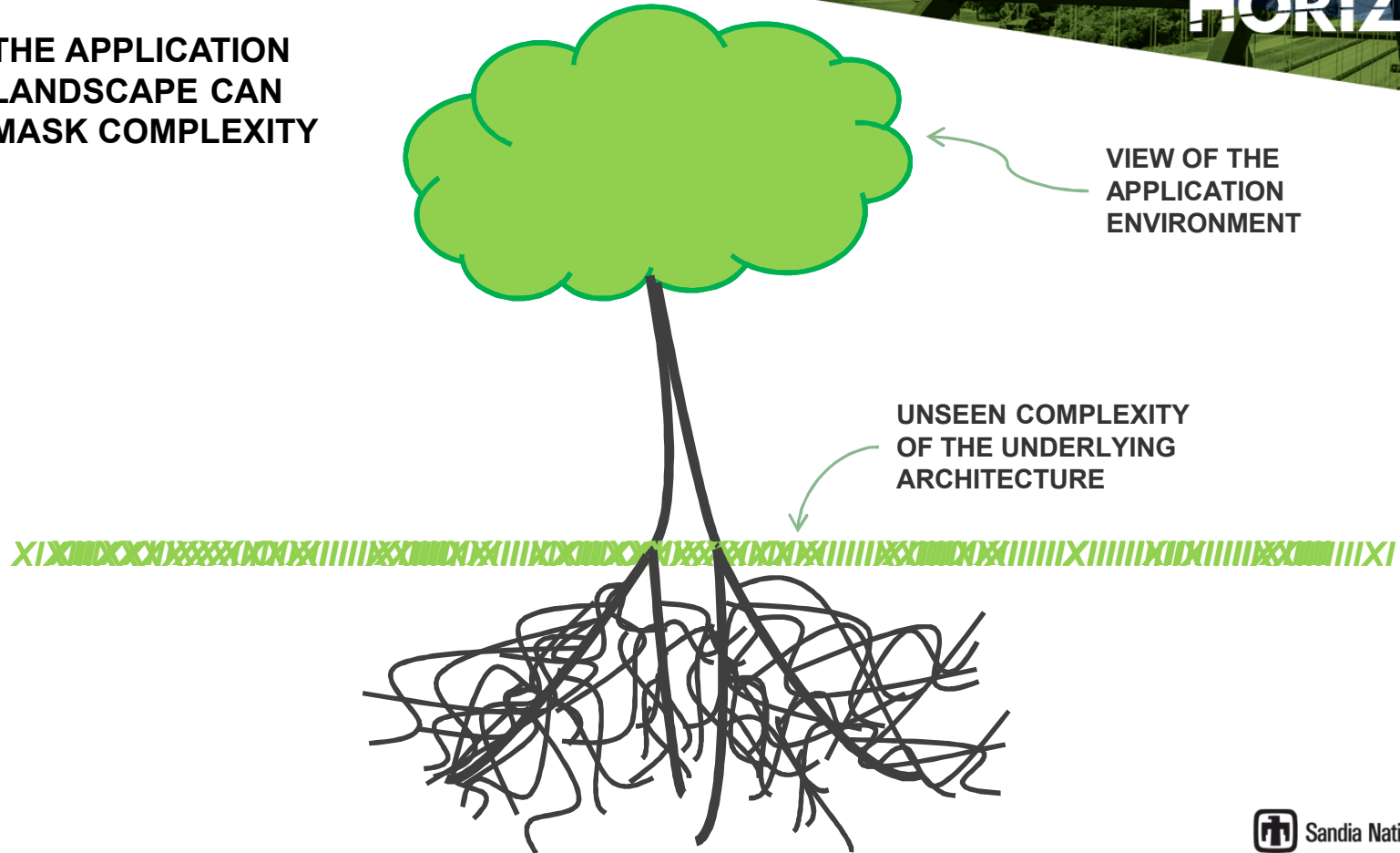
THE GOLD STANDARD

Software EOL within 6 months
+ 5 Filters in use

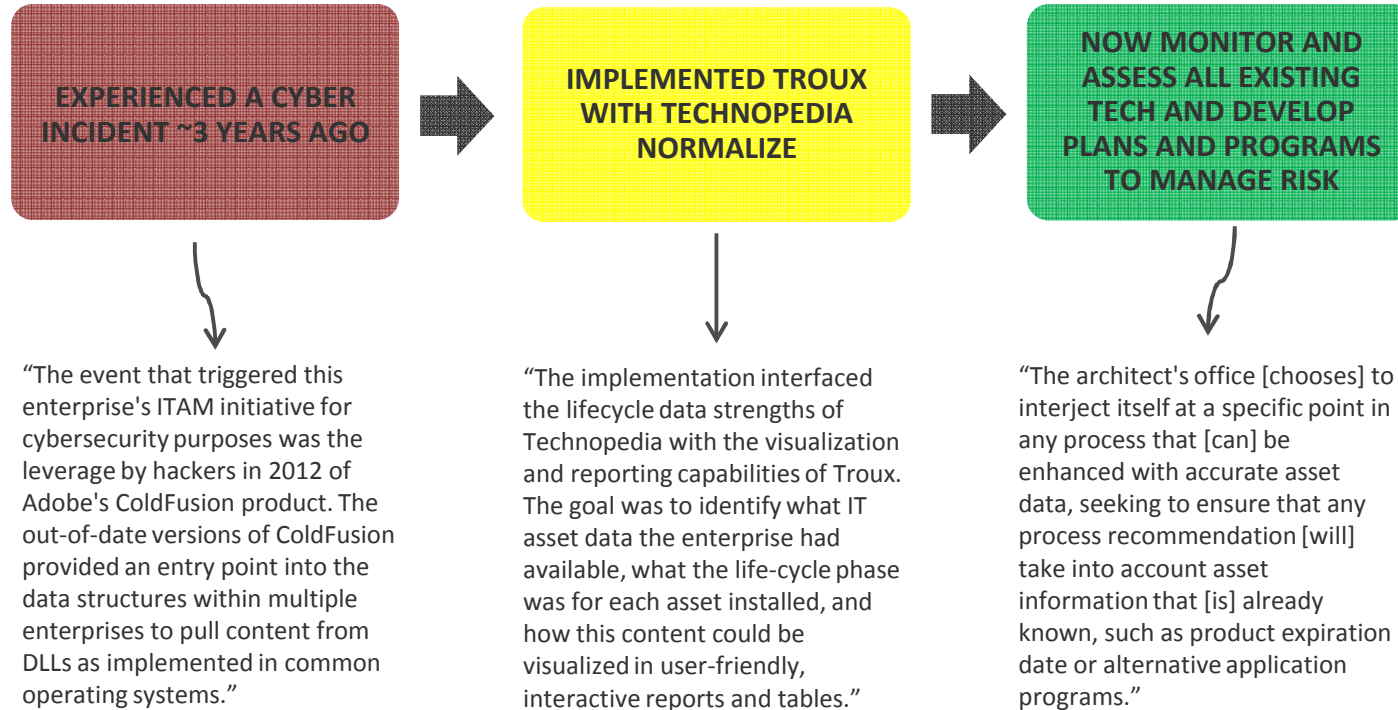


WHEN THE NUMBER OF INSTALLS ARE CONSIDERED IN THE CONTEXT OF EOL SCENARIOS THE CHALLENGE OF IT ASSET MANAGEMENT CAN SEEM EVEN MORE INSURMOUNTABLE

THE APPLICATION LANDSCAPE CAN MASK COMPLEXITY

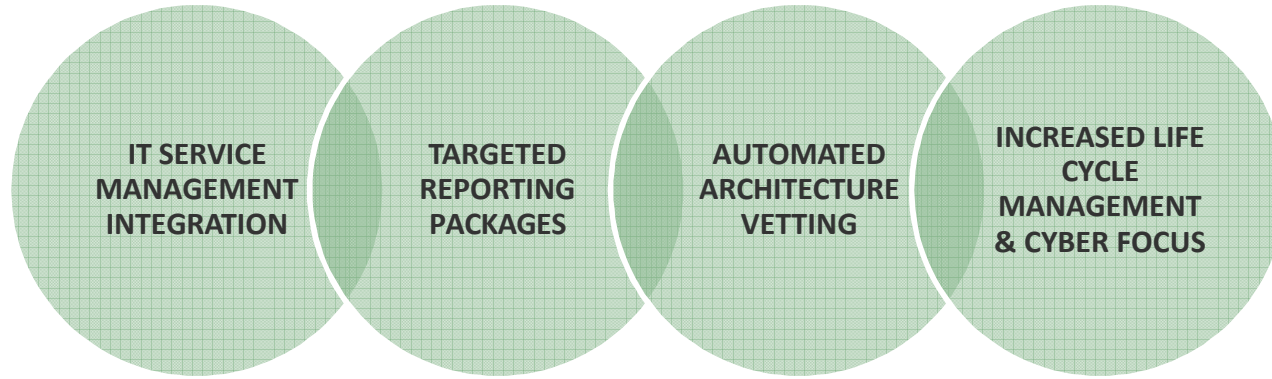


A RISK LESSON (FROM THE PAST...)



Keyworth, Bill, “IT Security: World-Class Enterprise Eases Cybersecurity Mandates”, IDC Opinion, 2014.

WHAT'S NEXT?



HORIZONS

The Planview Customer Conference

October 14–16 2015 | Austin, Texas

Thank you!

WILLIAM J ROBINSON

wirobin@sandia.gov

<https://www.linkedin.com/pub/william-j-robinson/8/b75/b26>