

EBR-II and TREAT Digitization Project

Fuel Cycle Research & Development

***Prepared for
U.S. Department of Energy
FCRD Campaign***

George W Griffith

Cristian Rabiti

September 2015

FCRD-PAC-2015-000282

INL/MIS-15-36783



DISCLAIMER

This information was prepared as an account of work sponsored by an agency of the U.S. Government. Neither the U.S. Government nor any agency thereof, nor any of their employees, makes any warranty, expressed or implied, or assumes any legal liability or responsibility for the accuracy, completeness, or usefulness, of any information, apparatus, product, or process disclosed, or represents that its use would not infringe privately owned rights. References herein to any specific commercial product, process, or service by trade name, trade mark, manufacturer, or otherwise, does not necessarily constitute or imply its endorsement, recommendation, or favoring by the U.S. Government or any agency thereof. The views and opinions of authors expressed herein do not necessarily state or reflect those of the U.S. Government or any agency thereof.

SUMMARY

CONTENTS

SUMMARY	iv
1. INTRODUCTION	2
2. WORK HISTORY	2
3. WORK HISTORY	3
3.1 TREAT Status	3
3.2 EBR-II Status	9
4. FUTURE WORK	9
5. EBR-II DRAWING EXAMPLES	18
Appendix A File Sharing Via Google Drive.....	23

FIGURES

Figure 1: TREAT drawing tree	8
Figure 2: EBR-II Primary Tank	18
Figure 3: EBR-II Primary Tank Support.....	19
Figure 4: Primary EBR-II Tank Support Structure.....	20
Figure 5: EBR-II Primary Tank	21
Figure 6: Cut away of EBR-II primary tank and support.....	22
Figure 7: Sharing of the TREAT drawing with the Engineering team via google drive	23

TABLES

Table 1: Completed work table for the TREAT digitization project	3
Table 2: EBR-II Drawing Control Matrix.....	10

Intentionally Blank

ACRONYMS

TREAT: Transient **Reactor** Test Facility

EBR-II: Experimental Breeder Reactor II

TITLE

1. INTRODUCTION

After an initial effort to size the problem and identify the most needed component of the EBR-II drawing and the location of sensors used for the data acquisition system occurred in FY 2014, a project was started in 2015 to digitize the drawings for both the EBR-II and TREAT reactor drawings. The digitalization of the EBR-II drawing has been founded directly by DOE under a SBIR call. While the TREAT work was also supported directly by the DOE (SBIR), with the additional help of the TREAT Restart Program, TREAT engineering and TREAT Experimental Design groups.

The reason of the additional founding requirement for the completion of the TREAT digitization, supplied by the TREAT program, was the decision to raise the quality of the digitization process so to include material information and create file format that could be easily manipulated a posteriori.

Digitizing the technical drawings provides multiple benefits. Moving the scanned or hard copy drawings to modern 3-D CAD (Computer Aided Drawing) format saves data that could be lost over time. The 3-D drawings produce models that can interface with other drawings to make complex assemblies. The 3-D CAD format can also include detailed material properties and parametric coding that can tie critical dimensions together allowing easier modification. Creating the new files from the old drawings has found multiple inconsistencies that are being flagged or corrected improving understanding of the reactor(s).

Beyond data retention the 3-D CAD format allows detailed physics models to be built. Modern physics codes being developed for radiation transport and thermal hydraulic analysis can work directly with 3-D CAD models. The 3-D CAD models can be used to create meshed reactor components and models allowing very detailed simulations to be run. The detailed models can then be used in validating the modern codes using previous experimental data. EBR-II in particular has a database of large integrated tests that can be used to validate modern codes.

The TREAT drawings are also going to be used by the engineering department, experimental design and low enrichment fuel conversion project. The engineering groups can use the drawings to produce thermo-mechanical models to assist in operating work. Integrated 3-D reactor models will allow large scale walk through display to further assist engineering activities. The drawings have already proven to be of great interest to the TREAT staff.

2. WORK HISTORY

Initial work centered on finding a suitable small business that could support the INL effort to digitize the EBR-II and TREAT reactor drawings. INL works with multiple vendors for drafting support for unique projects. Discussions with MFC engineering staff indicated that Walsh Engineering would have the capability and technical skills to complete the task. Walsh had earlier been given a support contract through a competitive bidding process. Walsh in particular had experience creating sophisticated INVENTOR 3-D CAD drawings. INVENTOR is a 3-D CAD program that can quickly produce sophisticated 3-D models suitable for INL engineering.

Two engineering work requests were created to start work on EBR-II and TREAT drawing conversion. TREAT drawings were given priority so that the engineering groups could quickly integrate the new drawings into the restart and engineering programs. A flow of completed drawings was established using a team of dedicated Walsh drafters. Drawing priority was established so that the most important drawings and assemblies were created first. Naming standards were created to flag drawings that had inconsistencies. Following references from one drawing to another demonstrated that the volume of work was significantly larger than initially estimated. INL dedicated a point of contact in the TREAT

engineering group to pull additional drawings, resolve inconsistencies and to improve the project efficiency.

EBR-II drawing conversion started later in the year as additional staff became available at Walsh for the project. An EBR-II drawing conversion team was established by Walsh similar to the TREAT team. The lessons learned from the TREAT work were carried to the new team. Since EBR-II doesn't have an active engineering group a point of contact was established with the MFC Document Control group. A similar discovery phase has shown that many more drawings are available than initially identified.

3. WORK HISTORY

3.1 TREAT Status

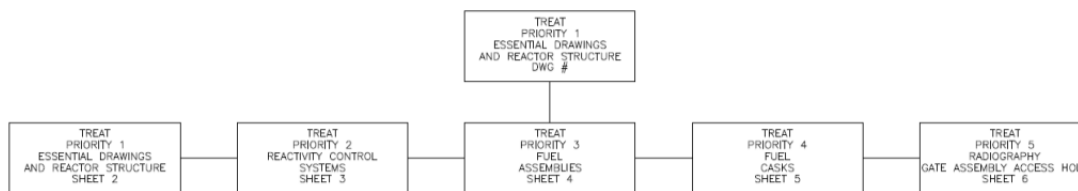
Starting with only a single 484 page reference drawing book to describe the TREAT reactor two additional books of 301 and 305 pages were identified. Conversion of the entire reactor drawing set will be completed by the end of the calendar year following an contract extension requested by Walsh Engineering without increase in the requested budget. The original scope of work would have created enough data to allow advanced simulation work. The additional detail included in the additional books is needed to allow engineering and operational work. The additional work to complete the reactor drawings were funded by the TREAT engineering, TREAT Restart and TREAT Experiments groups because of the benefit.

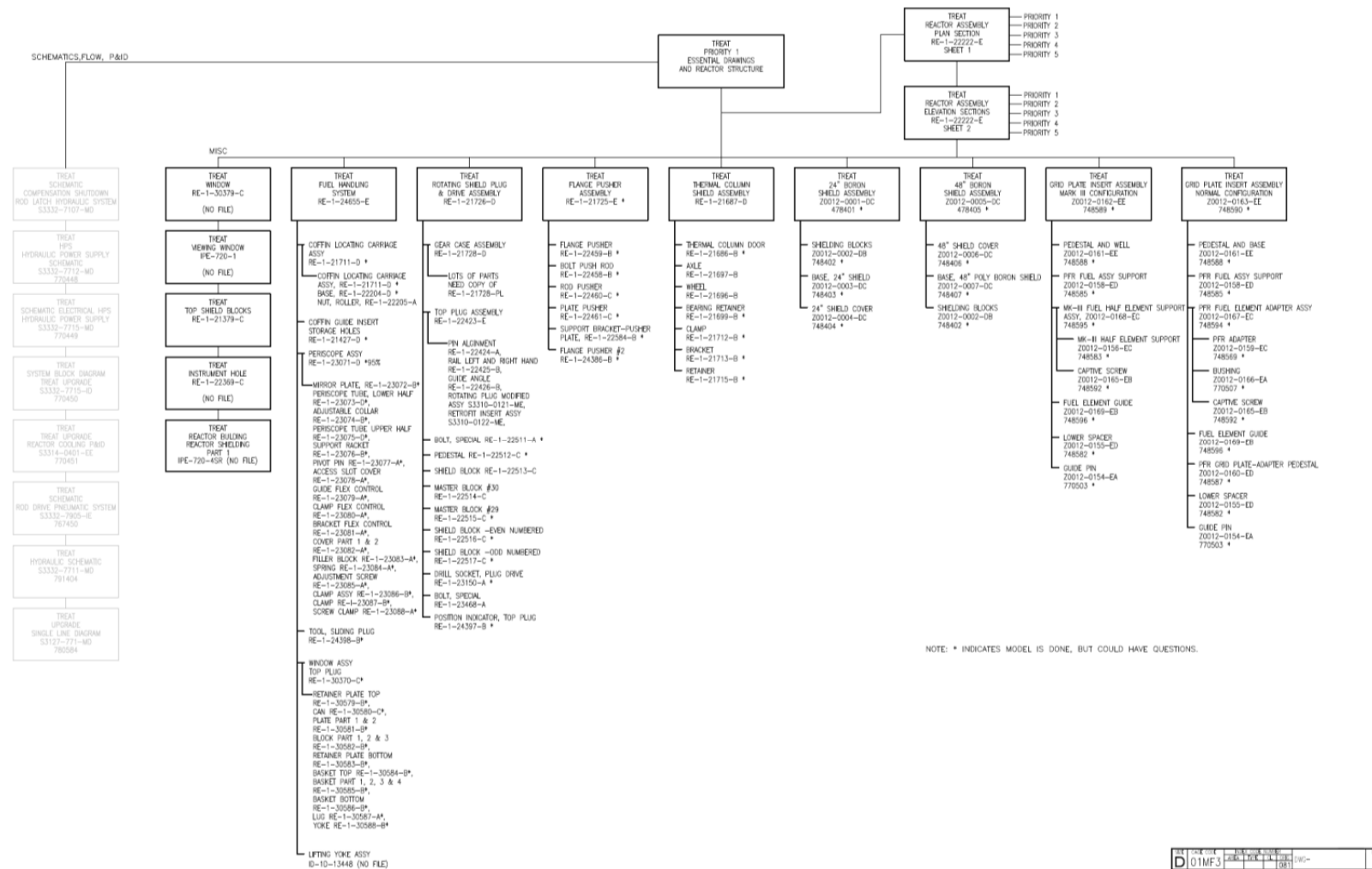
The addition of the new required detailed explains the increase in the contractual time and the work could not be effectively split sub sequentially since it will be much more expensive to add those details later.

68% of the components have been modeled. (1816 parts and 251 assemblies.) The bulk of the parts yet to be completed are low priority parts so that it could be assert that the original goal has ben already been achieved considering also the higher level of quality that has been decided for the drawings. A copy of the drawings complete and the inherent drawing structure has been delivered to the TREAT engineering team (mail in appendix A). A graphic of the drawing tree is included to show the number of drawings and the data structures of the TREAT reactor.

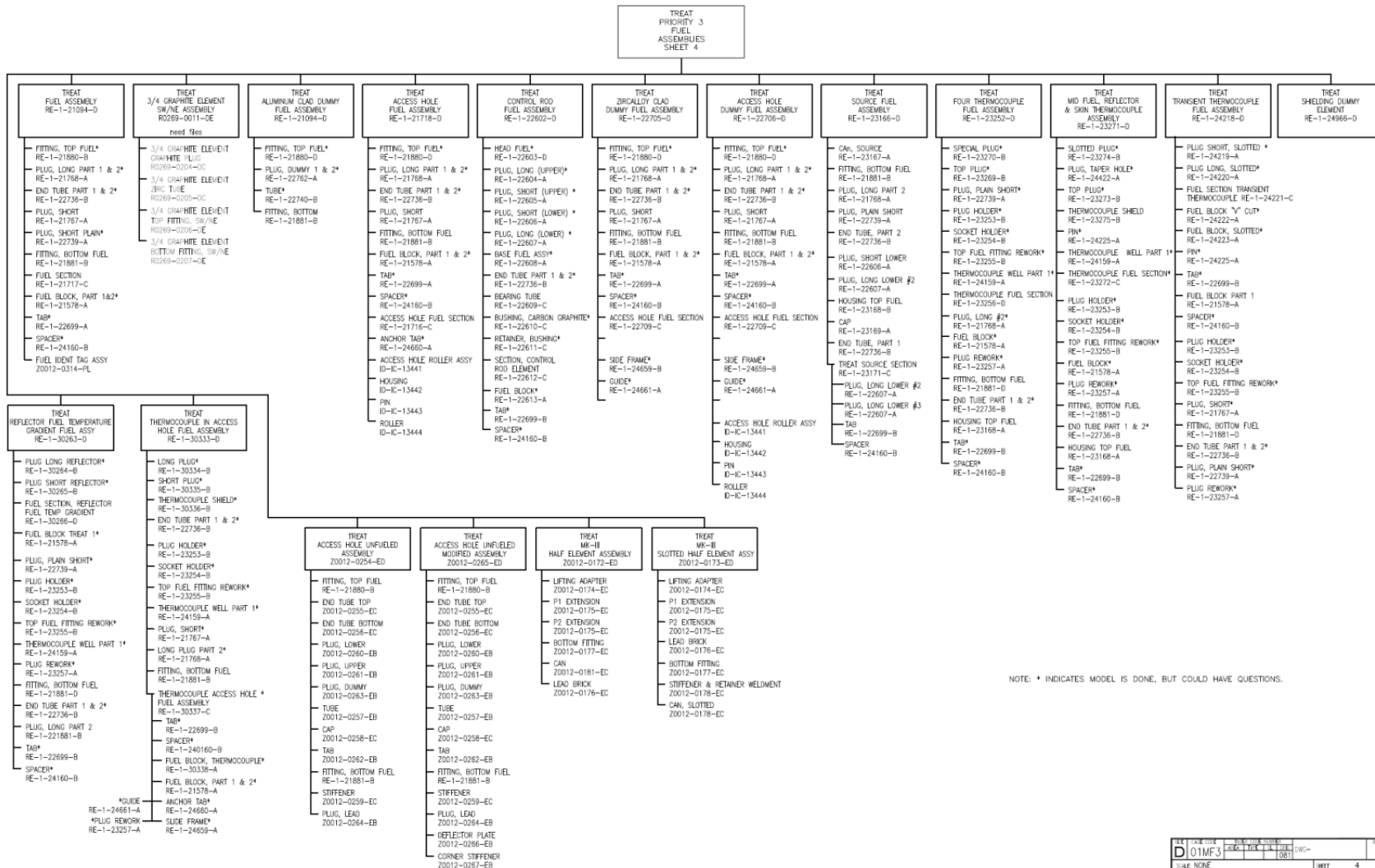
Table 1: Completed work table for the TREAT digitization project

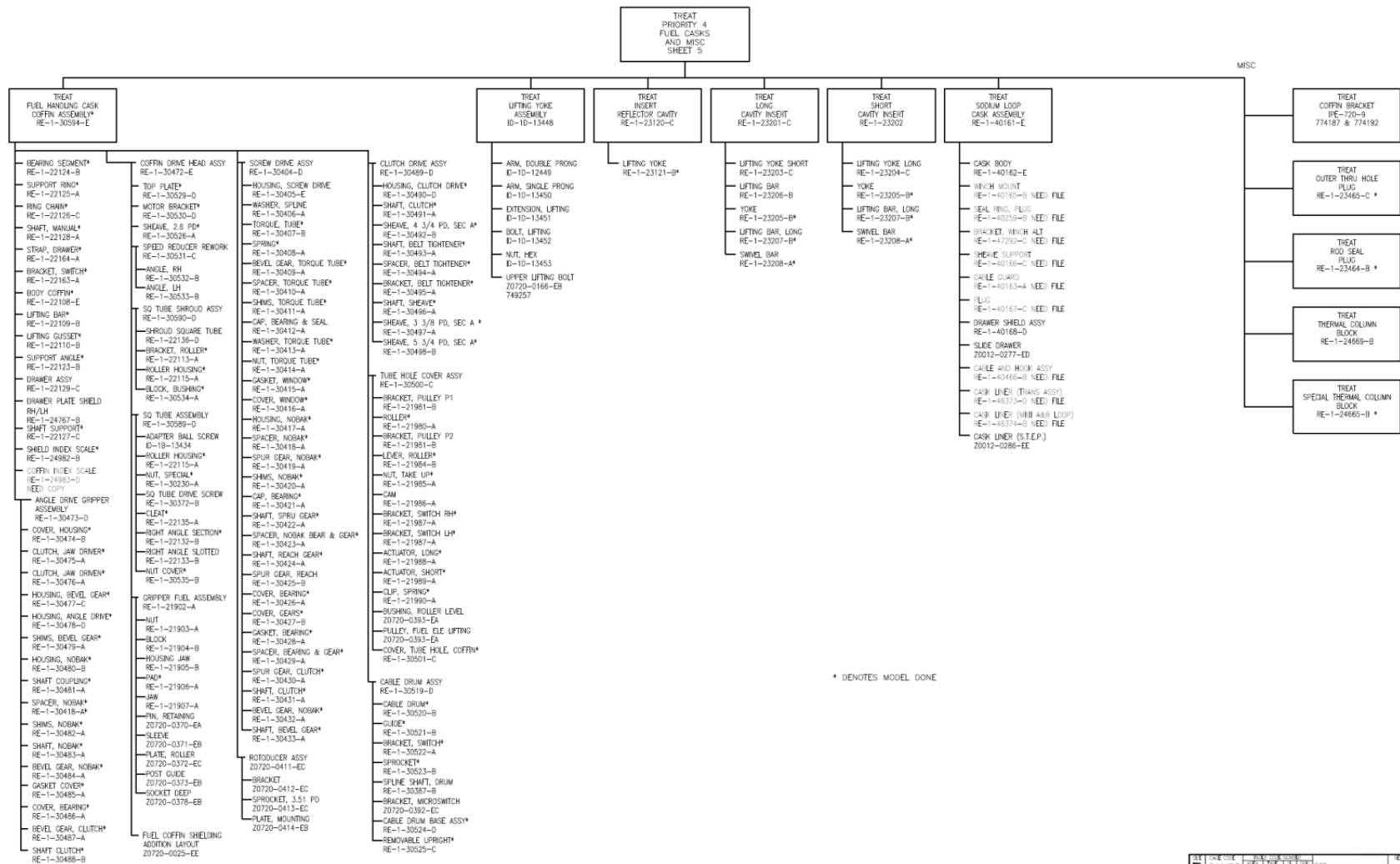
TREAT Drawings	Status Complete %	Weighted % Complete
Priority 1	85	17
Priority 2	90	18
Priority 3	70	14
Priority 4	90	18
Priority 5	7	1
Total		68

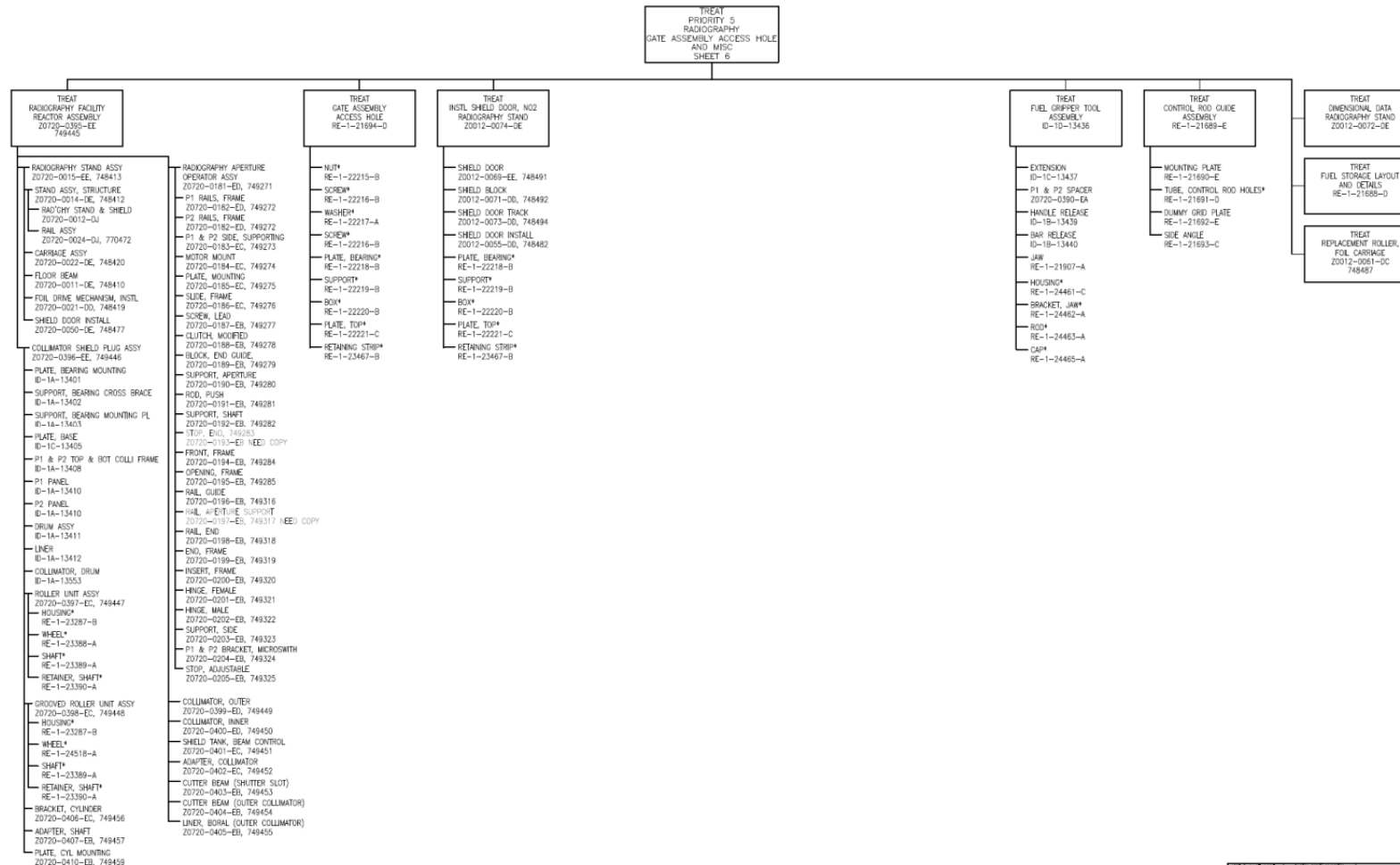












TYPE	DATE CODE	EPOCH CODE NUMBER				DINO--
D	01MF3	AREA	TYPE	CL	CODE	
					081	

3.2 EBR-II Status

EBR-II work started with identifying the drawings needed, retrieving some of those drawings, and modeling parts and assemblies for the drawings we do have in hand. Approximately 50% of the effort has been spent modeling parts and putting assemblies together. There are currently 338 parts and 73 assemblies modeled. The other 50% has been used identifying missing drawings and creating a spreadsheet to track those drawings and their retrieval from document control. As we approach a drawing for modeling, we identify on the face of the drawing, next level assemblies and child drawing references, as well as other drawing references. All numbers (current drawing, parent and child drawings) are fed into the EDMS search engine using the BEA 6 digit drawing number and the Alternate ID number (ex- 687886 and E0552-0017 for the Lower Preassembly). The search for the Alternate ID number can yield multiple additional drawings as any drawing that is tied to it via an assembly or reference, will show up in the search. All these numbers are in turn searched as well for a hardcopy of the drawing and/or additional drawing references.

Once all drawings links have been identified, we can then move on to the next drawing on our list of those initially handed over to model. We have found that while we are able to gather a multitude of drawing references, roughly 90% of those drawings are not available via EDMS and need to be retrieved from MFC Document Control.

Using the Drawing Matrix [Table 1] to see ranges of drawings we are in need of, and based off of the TREAT effort yielding roughly 80% of drawings in specific ranges, we can assume there are a minimum of 4000, and possibly upwards of 6000-7000 drawings we need to retrieve to complete the work. This is up from an initial projection of 1000-2000 drawings needed to be retrieved. It is to be noticed that those drawings cover the whole reactor while the set covering the vessel and internal and primary loop is a rather smaller subset but needs to be clearly assessed. As we do obtain missing drawings, we expect there to be a continued effort of identifying more drawings needed from the new information.

We expect to be able to retrieve roughly 750 missing drawings and be able to complete the initial identification of missing drawings in addition to identifying missing any drawings from 175 of the 750 retrieved drawings. Additionally, we expect to complete an additional 50 parts and 10 assemblies by year-end under an already founded contract with Walsh Engineering.

4. FUTURE WORK

The remaining fraction of the TREAT work, mostly low relevance component, will be complete by the end of the calendar year under an already founded and in place contract. A complete set of current drawings is being delivered to TREAT engineering [appendix 3] so that they can start integrating the drawings into TREAT processes.

The EBR-II work will center on completing a description of the primary system drawings in 2016. If time is available work on secondary and supporting reactor components will start.

Immediate work will center on identification and retrieval of all the missing drawings. This work should be accomplished by mid-year. Retrieval of drawings and finding parent/child dependencies will still be roughly 40-50% of the overall effort. Modeling of the reactor should reach roughly 35% completion, which would represent ~50% of the primary components, adding 1400 parts and 250 assemblies.

Table 2: EBR-II Drawing Control Matrix

DRAWING STATUS	VIA EDMS	VIA PCBE	VIA DOC CTL	DWG NO.	ALTERNATE ID	DESCRIPTION	NEXT LEVEL ASSEMBLY LISTED	NOTES	DRAFTER
X		1	1	151086	042-EBR-II-701-2	EBR II REACTOR CONTAINMENT VESSEL	NONE		
					CS-243A		EB-1-25179		
					CS-245A		EB-1-25179	Not Sure about this number?	
				087871	E0552-0002-DD	REFLECTOR SUBASSEMBLY MODEL B.S.S. (INNER BLANKET) MODIFICATION WITH FLUX WIRE	EB-1-25961-E	PICKED UP REFERENCE FROM EDMS VIA SEARCH ON EB-1-25961-E	
					E0552-0002-PL7				
				087883	E0552-0014-DD	REFLECTOR SUBASSEMBLY MODEL B.S.S. OUTER BLANKET MODIFICATION WIRE FLUX	EB-1-25961-E	PICKED UP REFERENCE FROM EDMS VIA SEARCH ON EB-1-25961-E	
					E0552-0014-PL7				
				087884	E0552-0015-DE	REFLECTOR SUBASSEMBLY MODEL B.S.S. OUTER BLANKET MODIFICATION WIRE FLUX	EB-1-25961-E	PICKED UP REFERENCE FROM EDMS VIA SEARCH ON EB-1-25961-E	
					E0552-0015-PL7				
				087885	E0552-0016-DE	SUB ASSEMBLY MARK 1A STB MODIFICATION WITH FLUX (CORE)	EB-1-25961-E	PICKED UP REFERENCE FROM EDMS VIA SEARCH ON EB-1-25961-E	
					E0552-0016-PL7				
				087886	E0552-0017-DD	LOWER PREASSEMBLY	E0552-0016-DE	NEXT LEVEL ASSEMBLY FROM 704821	
					E0552-0017-PL7				
				087888	E0552-0019-DD	CENTRAL FLUX WIRE TUBE HOLDER ASSEMBLY	E0552-0017-DD	PICKED UP REFERENCE FROM EDMS VIA SEARCH ON E0552-0017	
					E0552-0019-PL7				
				087889	E0552-0020-DC	GRID SUBASSEMBLY	E0552-0017-DD	PICKED UP REFERENCE FROM EDMS VIA SEARCH ON E0552-0017	
					E0552-0020-PL7				
				087890	E0552-0021-DC	FLOW DISTRIBUTOR	E0552-0017-DD	PICKED UP REFERENCE FROM EDMS VIA SEARCH ON E0552-0017	
				087891	E0552-0022-DC	SHIELD LOWER	E0552-0017-DD	PICKED UP REFERENCE FROM EDMS VIA SEARCH ON E0552-0017	
				087901	E0552-0032-DE	EBR II SUBASSEMBLY MARK 1A STB MODIFICATION WITH FLUX WIRE (INNER BLANKET)	EB-1-25961-E	PICKED UP REFERENCE FROM EDMS VIA SEARCH ON EB-1-25961-E	
					E0552-0032-PL7				
				087931	E0569-0002-DE	EBR II IRRADIATION SUBASSEMBLY MARK D-1 INNER BLANKET	NONE	NEXT LEVEL ASSEMBLY FROM 704821	
					E0569-0002-PL7				
				087932	E0569-0003-DC	HEX TUBE	E0569-0002-DE	PICKED UP REFERENCE FROM EDMS VIA SEARCH ON E0569-0002	
				087933	E0569-0004-DB	T.E.D. DUMMY ELEMENT	E0569-0002-DE	PICKED UP REFERENCE FROM EDMS VIA SEARCH ON E0569-0002	
				087935	E0569-0006-DC	HEX TUBE	E0569-0002-DE	PICKED UP REFERENCE FROM EDMS VIA SEARCH ON E0569-0002	
				087967	E0578-0002-DE	EBR II CORE SUBASSEMBLY MODEL STB-HW	EB-1-25961-E	NEXT LEVEL ASSEMBLY FROM 704821	
					E0578-0002-PL7				
				087968	E0578-0003-DD	LOWER PREASSEMBLY CORE MODEL STB-HW	E0578-0002-DE	PICKED UP REFERENCE FROM EDMS VIA SEARCH ON E0578-0002	
					E0578-0003-PL7				
				087971	E0578-0004-DE	BLANKET REGION CORE SUBASSEMBLY MODEL STB-HW	EB-1-25961-E	NEXT LEVEL ASSEMBLY FROM 704821	
					E0578-0004-PL7				
				087972	E0578-0007-DD	LOWER PREASSEMBLY MODEL STB-HW (BLANKET REGION)	E0578-0004-DE	PICKED UP REFERENCE FROM EDMS VIA SEARCH ON E0578-0004	
					E0578-0007-PL7				
				087435	E0597-0005-DE	IRRADIATION SUBASSY MK 1A, STB (CORE) MOD WITH DOSIMETER	EB-1-25961-E	NEXT LEVEL ASSEMBLY FROM 704821	
					E0597-0005-PL7				
X				088930	E0969-0001-DE	EBR II SODIUM COLD TRAP ASSY	NEXT LEVEL HATCHED OUT E0969-0027-DE		
	X				E0969-0001-PL			NO RECORD IN EDMS	
				088935	E0969-0012-DD	JACKET COLD TRAP	E0969-0001-DE	REF'D FROM 089547, INACTIVE DRAWING, STATUS INDICATES 'ASSIGNED', ALSO REF'D FROM 089840	
				088936	E0969-0013-DD	SHELL COLD TRAP	E0969-0001-DE	REF'D FROM 089547, INACTIVE DRAWING, STATUS INDICATES 'ASSIGNED', ALSO REF'D FROM 089840	
				088937	E0969-0014-DD	BAFFLE CONNECTION	E0969-0001-DE	REF'D FROM 089547, INACTIVE DRAWING, STATUS INDICATES 'ASSIGNED', ALSO REF'D FROM 089840	
				088938	E0969-0016-DC	FLANGE COLD TRAP JACKET	E0969-0001-DE	REF'D FROM 089547, INACTIVE DRAWING, STATUS INDICATES 'ASSIGNED', ALSO REF'D FROM 089840	
X				088944	E0969-0027-DE	PRIMARY SODIUM COLD TRAP & SHIELD ASSEMBLY	E0171-0002-DE	NEXT LEVEL ASSY FROM 089547	
					E0969-0027-PL			NO RECORD IN EDMS	
					E0969-0031-BMT				
				088946	E0969-0031-DD	UPPER HEAD & BAFFLE SUBASSY	E0969-0001-DE (088930)	REF'D FROM 088962 AS NEXT LEVEL ASSY, INACTIVE DRAWING, STATUS INDICATES ASSIGNED	
					E0969-0036-BMT			NO RECORD IN EDMS	
				088951	E0969-0036-DC	SUPPORT LEG COLD TRAP ASSY	E0969-0001-DE	REF'D FROM 089547, INACTIVE DRAWING, STATUS INDICATES 'ASSIGNED', ALSO REF'D FROM 089840	
				088962	E0969-0037-DB	RETAINER THERMOWELLS	E0969-0031-DD	REF'D FROM 089548 DETAIL 1, INACTIVE DRAWING, STATUS INDICATES ASSIGNED	
				088688	E1976-0016-DD	PRIMARY PURIFICATION CELL SHADOW SHIELD INSTALLATION		REF'D FROM 097484 SH1, NO RECORD IN EDMS	
					E1976-0016-PL7				
				088722	E1976-0050-DD	EBR-II ACS VAPOR TRAP ASSEMBLY - UNITS 2,3 & 4	EB-1-29367-E	REF'D VIA EDMS SEARCH ON EB-1-29367, NO RECORD IN EDMS	
				088723	E1976-0051-DD	EBR-II VESSEL - ACS VAPOR TRAP	E1976-0050-DD	REF'D VIA EDMS SEARCH ON E1976-0050, NO RECORD IN EDMS	
				077724	E1976-0052-DB	EBR-II FLANGE, BLIND - ACS VAPOR TRAP	E1976-0050-DD	REF'D VIA EDMS SEARCH ON E1976-0050, NO RECORD IN EDMS	
				088725	E1976-0053-DC	EBR-II FLANGE, WELDING NECK - ACS VAPOR TRAP	E1976-0050-DD	REF'D VIA EDMS SEARCH ON E1976-0050, NO RECORD IN EDMS	
				088726	E1976-0054-DB	EBR-II FILTER ELEMENT, 4" - ACS VAPOR TRAP	E1976-0050-DD	REF'D VIA EDMS SEARCH ON E1976-0050, NO RECORD IN EDMS	
				088727	E1976-0055-DB	EBR-II MESH RETAINER RING - ACS VAPOR TRAP	E1976-0050-DD	REF'D VIA EDMS SEARCH ON E1976-0050, NO RECORD IN EDMS	
				088728	E1976-0056-DC	EBR-II WELD MAP FOR ACS VAPOR TRAPS, UNITS 2, 3 & 4	E1976-0050-DD	REF'D VIA EDMS SEARCH ON E1976-0050, NO RECORD IN EDMS	
X				089547	E1982-0133-DE	PRIMARY SODIUM MULTI MESH COLD TRAP ASSEMBLY	E0969-0027-DE	NEXT LEVEL ASSY FROM 089548	
					E1982-0133-PL			NO RECORD IN EDMS	
X				089548	E1982-0134-DE	PRIMARY COLD TRAP UPPER HEAD ASSEMBLY	E1982-0133-DE		
					E1982-0134-PL			NO RECORD IN EDMS	
				089549	E1982-0135-DD	EBR-II - BULKHEAD WELDMENT - PRIMARY SODIUM MULTI-MESH COLD TRAP	E1982-0134-DE	PICKED UP REFERENCE FROM EDMS, NO RECORD IN EDMS	
				089608	E1984-0032-DE	EBR-II PRIMARY PUMP SHIELD PLUG MOISTURE EVACUATION SYSTEM	EB-1-25003-F	REF'D VIA EDMS SEARCH FOR 092780, NO RECORD IN EDMS	

		689609	E1984-0033-DO	EBR-II PANEL - PRIMARY PUMP SHIELD PLUG MOISTURE EVACUATION SYSTEM	E1984-0032-DE	REF'D VIS EDMS SEARCH ON E1984-0032, NO RECORD IN EDMS	
		689610	E1984-0034-DO	EBR-II PLATE - PRIMARY PUMP SHIELD PLUG MOISTURE EVACUATION SYSTEM	E1984-0032-DE	REF'D VIS EDMS SEARCH ON E1984-0032, NO RECORD IN EDMS	
	1	689613	E1984-0037-EC	EBR-II CONDUIT SEAL GLAND ASSEMBLY - INSTRUMENT PLUG	EB-1-25564-E	REF FROM EB-1-25564-E	
	X	689639	E1984-0072-DE	EBR-II MK-2 PRIMARY SODIUM MULTI-MESH COLD TRAP AND SHIELD ASSEMBLY	E5171-0002-DE	REF'D FROM 697484	
			E1984-0073-PL			NO RECORD IN EDMS	
	X	689640	E1984-0073-DE	PRIMARY SODIUM MULTI-MESH COLD TRAP ASSEMBLY	E5171-0002-DE	REF'D FROM 697484	
			E1984-0073-PL			NO RECORD IN EDMS	
		689641	E1984-0074-DC	EBR-II MK-2 SHIELD MOUNTING PLATE - PRIMARY SODIUM MULTI-MESH COLD TRAP	E1984-0072-DE	PICKED UP REFERENCE FROM EDMS, NO RECORD IN EDMS	
		689642	E1984-0075-DC	EBR-II MK-2 BASE PLATE - PRIMARY SODIUM MULTI-MESH COLD TRAP	E1984-0072-DE	PICKED UP REFERENCE FROM EDMS, NO RECORD IN EDMS	
		689643	E1984-0076-DE	EBR-II MK-2 PRIMARY COLD TRAP UPPER HEAD ASSEMBLY	E1984-0073-DE	PICKED UP REFERENCE FROM EDMS, NO RECORD IN EDMS	
			E1984-0076-PL7			NO RECORD IN EDMS	
		689644	E1984-0077-DC	EBR-II MK-2 LOWER MESH SUPPORT - PRIMARY SODIUM MULTI-MESH COLD TRAP	E1984-0076-DE	PICKED UP REFERENCE FROM EDMS, NO RECORD IN EDMS	
		689645	E1984-0078-DC	EBR-II MK-2 MESH RETAINER BAR - PRIMARY SODIUM MULTI-MESH COLD TRAP	E1984-0076-DE	PICKED UP REFERENCE FROM EDMS, NO RECORD IN EDMS	
		689646	E1984-0079-DC	EBR-II MK-2 THERMOWELL RETAINER - PRIMARY SODIUM MULTI-MESH COLD TRAP	E1984-0076-DE	PICKED UP REFERENCE FROM EDMS, NO RECORD IN EDMS	
		689647	E1984-0080-DE	EBR-II MK-2 INNER MESH SUPPORT - PRIMARY SODIUM MULTI-MESH COLD TRAP	E1984-0076-DE	PICKED UP REFERENCE FROM EDMS, NO RECORD IN EDMS	
			E1984-ALL				
	1	670304	E5059-0043-DE	EBR-II CGCS H-1 PENETRATION PLUG		REF FROM EB-1-54344-C	
	1	690893	E5059-0311-DO	SYSTEM DOCUMENTATION		REF FROM E-3059-0043-DE	
			E5104-ALL				
			E5162-0002-8M7				
		696610	E5162-0002-DE	SHIELDED COLD TRAP ASSEMBLY PRIMARY PURIFICATION CELL	NONE	PICKED UP REFERENCE FROM EDMS, NO RECORD IN EDMS	
		696611	E5162-0003-DO	SHIELDED COLD TRAP TOP SHIELD PRIMARY PURIFICATION CELL	E5162-0002-DE	PICKED UP REFERENCE FROM EDMS, NO RECORD IN EDMS	
			E5162-0004-8M7				
		696612	E5162-0004-DE	ECONOMIZER ASSEMBLY PRIMARY PURIFICATION CELL	E5171-0002-DE	REF'D FROM 697484, NO RECORD IN EDMS	
		697909	E5168-0051-DC	PIPING PERD SYSTEM TO THIMBLE COOLING SYSTEM	EB-1-25004-F	REF'D VIA EDMS SEARCH FOR 692781, NO RECORD IN EDMS	
	X	697484	E5171-0002-DE	SHIELDED COLD TRAP - NUCLIDE TRAP INSTALLATION UPPER & LOWER PIPING PLAN	NONE LISTED	NEXT LEVEL ASSY FROM 689944	
			E5171-0002-PL			NO RECORD IN EDMS	
			E5171-0003-8M7				
		697485	E5171-0003-DE	NO. 1 NUCLIDE TRAP ASSY PRIMARY PURIFICATION CELL	E5171-0002-DE	PICKED UP REFERENCE FROM EDMS USING 'E5171' PREFIX, ASSIGNED & INACTIVE	
		697486	E5171-0004-DE	NO. 1 NUCLIDE TRAP WELDMENT PRIMARY PURIFICATION CELL	E5171-0003-DE	PICKED UP REFERENCE FROM EDMS USING 'E5171' PREFIX, ASSIGNED & INACTIVE	
		697487	E5171-0005-DE	SHIELD CASE WELDMENT PRIMARY PURIFICATION CELL NUCLIDE TRAP	E5171-0003-DE	PICKED UP REFERENCE FROM EDMS USING 'E5171' PREFIX, ASSIGNED & INACTIVE	
		697488	E5171-0006-DE	SHIELD PLUG WELDMENT PRIMARY PURIFICATION CELL NUCLIDE TRAP	E5171-0003-DE	PICKED UP REFERENCE FROM EDMS USING 'E5171' PREFIX, ASSIGNED & INACTIVE	
			E5171-0007-8M7				
		697489	E5171-0007-DC	PIPE SPOOL WELDMENT NUCLIDE TRAP INSTALLATION	E5171-0002-DE	PICKED UP REFERENCE FROM EDMS USING 'E5171' PREFIX, ASSIGNED & INACTIVE, SAYS OBSOLETE	
		697490	E5171-0008-DC	EBR-II - PPC SHIELDED COLD TRAP AND NUCLIDE TRAP INSTALLATION PIPE SPOOL WELDMENT	E5171-0002-DE	REF'D FROM 697484	
		697491	E5171-0009-DC	EBR-II - PPC SHIELDED COLD TRAP - NUCLIDE TRAP INSTALLATION PIPE SPOOL WELDMENT	E5171-0002-DE	REF'D FROM 697484	
		697492	E5171-0010-DC	EBR-II - PPC SHIELDED COLD TRAP - NUCLIDE TRAP INSTALLATION PIPE SPOOL WELDMENT	E5171-0002-DE	REF'D FROM 697484	
		697493	E5171-0011-DC	EBR-II - PPC SHIELDED COLD TRAP - NUCLIDE TRAP INSTALLATION PIPE SPOOL	E5171-0002-DE	REF'D FROM 697484	
		697494	E5171-0012-DC	EBR-II - PPC SHIELDED COLD TRAP NUCLIDE TRAP INSTALLATION PIPE SPOOL	E5171-0002-DE	REF'D FROM 697484	
		697495	E5171-0013-DC	EBR-II - PPC SHIELDED COLD TRAP - NUCLIDE TRAP INSTALLATION PIPE SPOOL WELDMENT	E5171-0002-DE	REF'D FROM 697484	
		697496	E5171-0014-DC	EBR-II - PPC SHIELDED COLD TRAP - NUCLIDE TRAP INSTALLATION - PIPE SPOOL WELDMENT	E5171-0002-DE	REF'D FROM 697484	
			E5171-0015-8M7				
		697497	E5171-0015-DC	PIPE SPOOL NUCLIDE TRAP INSTALLATION	E5171-0002-DE	PICKED UP REFERENCE FROM EDMS USING 'E5171' PREFIX, ASSIGNED & INACTIVE, SAYS OBSOLETE	
			E5171-0016-8M7				
		697498	E5171-0016-DC	PIPE SPOOL NUCLIDE TRAP INSTALLATION	E5171-0002-DE	PICKED UP REFERENCE FROM EDMS USING 'E5171' PREFIX, ASSIGNED & INACTIVE, SAYS OBSOLETE	
		697499	E5171-0017-DC	EBR-II - PPC SHIELDED COLD TRAP - NUCLIDE TRAP INSTALLATION - PIPE SPOOL WELDMENT	E5171-0002-DE	REF'D FROM 697484	
		697500	E5171-0018-DC	EBR-II - PPC SHIELDED COLD TRAP - NUCLIDE TRAP INSTALLATION PIPE SPOOL	E5171-0002-DE	REF'D FROM 697484	
		697501	E5171-0019-DC	EBR-II - PPC SHIELDED COLD TRAP - NUCLIDE TRAP INSTALLATION PIPE SPOOL WELDMENT	E5171-0002-DE	REF'D FROM 697484	
		697502	E5171-0020-DC	EBR-II - PPC SHIELDED COLD TRAP NUCLIDE TRAP INSTALLATION PIPE SPOOL WELDMENT	E5171-0002-DE	REF'D FROM 697484	
		697503	E5171-0021-DC	EBR-II - PPC SHIELDED COLD TRAP - NUCLIDE TRAP INSTALLATION PIPE SPOOL WELDMENT	E5171-0002-DE	REF'D FROM 697484	
		697504	E5171-0022-DC	EBR-II - PPC SHIELDED COLD TRAP NUCLIDE TRAP INSTALLATION - PIPE SPOOL WELDMENT	E5171-0002-DE	REF'D FROM 697484	
			E5171-0023-8M7				
		697505	E5171-0023-DO	PIPE SPOOL WELDMENT NUCLIDE TRAP INSTALLATION	E5171-0002-DE	PICKED UP REFERENCE FROM EDMS USING 'E5171' PREFIX, ASSIGNED & INACTIVE	
		697506	E5171-0024-DC	EBR-II - PPC SHIELDED COLD TRAP - NUCLIDE TRAP INSTALLATION PIPE SPOOL WELDMENT	E5171-0002-DE	REF'D FROM 697484	
			E5171-0025-8M7				
		697507	E5171-0025-DE	NUCLIDE TRAP SUPPORT FRAME NUCLIDE TRAP INSTALLATION	E5171-0002-DE	PICKED UP REFERENCE FROM EDMS USING 'E5171' PREFIX, ASSIGNED & INACTIVE	
			E5171-0026-8M7				
		697508	E5171-0026-DO	SUPPORT COLUMN NUCLIDE TRAP INSTALLATION	E5171-0002-DE	PICKED UP REFERENCE FROM EDMS USING 'E5171' PREFIX, ASSIGNED & INACTIVE	
		697509	E5171-0027-DO	BALL TRANSFER PLATE NUCLIDE TRAP INSTALLATION	E5171-0002-DE	PICKED UP REFERENCE FROM EDMS USING 'E5171' PREFIX, ASSIGNED & INACTIVE	
		698339	E5171-0028-DC	EBR-II - PPC SHIELDED COLD TRAP AND NUCLIDE TRAP INSTALLATION WALL BRACKET	E5171-0002-DE	REF'D FROM 697484	
		698340	E5171-0029-DC	EBR-II - PPC SHIELDED COLD TRAP AND NUCLIDE TRAP INSTALLATION GUSSET PLATE	E5171-0002-DE	REF'D FROM 697484	
		698341	E5171-0030-DC	EBR-II - PPC SHIELDED COLD TRAP NUCLIDE TRAP INSTALLATION WALL BRACKET	E5171-0002-DE	REF'D FROM 697484	
		698342	E5171-0031-DC	EBR-II - PPC SHIELDED COLD TRAP AND NUCLIDE TRAP INSTALLATION GUSSET PLATE	E5171-0002-DE	REF'D FROM 697484	
		698343	E5171-0032-DC	EBR-II - PPC SHIELDED COLD TRAP AND NUCLIDE TRAP INSTALLATION COLUMN BRACKET	E5171-0002-DE	REF'D FROM 697484	
		698344	E5171-0033-DC	EBR-II - PPC SHIELDED COLD TRAP AND NUCLIDE TRAP INSTALLATION BALL CASTER	E5171-0002-DE	REF'D FROM 697484	
		698345	E5171-0034-DC	EBR-II - PPC SHIELDED COLD TRAP AND NUCLIDE TRAP INSTALLATION SHIM PLATE	E5171-0002-DE	REF'D FROM 697484	
		698346	E5171-0035-DC	EBR-II - PPC SHIELDED COLD TRAP AND NUCLIDE TRAP INSTALLATION PLATFORM FRAME BEAM	E5171-0002-DE	REF'D FROM 697484	
		698347	E5171-0036-DC	EBR-II - PPC SHIELDED COLD TRAP AND NUCLIDE TRAP INSTALLATION PLATFORM FRAME BEAM	E5171-0002-DE	REF'D FROM 697484	
		698348	E5171-0037-DC	EBR-II - PPC SHIELDED COLD TRAP AND NUCLIDE TRAP INSTALLATION REMOVABLE BEAM	E5171-0002-DE	REF'D FROM 697484	
			E5171-0037-DC			REF'D FROM 697484 SH3, DETAIL 29, NO RECORD IN EDMS	
		698349	E5171-0038-DC	EBR-II - PPC SHIELDED COLD TRAP AND NUCLIDE TRAP INSTALLATION BEAM BRACKET	E5171-0002-DE	REF'D FROM 697484	

	698350	ES171-0037-DC	EBR-II - PPC SHIELDED COLD TRAP AND NUCLIDE TRAP INSTALLATION BEAM BRACKET	ES171-0002-DE	REF'D FROM 697484	
	698351	ES171-0040-DB	EBR-II - PPC SHIELDED COLD TRAP AND NUCLIDE TRAP INSTALLATION GRATING SUPPORT	ES171-0002-DE	REF'D FROM 697484	
	698352	ES171-0041-DB	EBR-II - PPC SHIELDED COLD TRAP AND NUCLIDE TRAP INSTALLATION GRATING SUPPORT	ES171-0002-DE	REF'D FROM 697484	
	698353	ES171-0042-DC	EBR-II - PPC SHIELDED COLD TRAP AND NUCLIDE TRAP INSTALLATION PLATFORM GRATING	ES171-0002-DE	REF'D FROM 697484	
	698354	ES171-0043-DC	EBR-II - PPC SHIELDED COLD TRAP AND NUCLIDE TRAP INSTALLATION PLATFORM GRATING	ES171-0002-DE	REF'D FROM 697484	
	698355	ES171-0044-DC	EBR-II - PPC SHIELDED COLD TRAP AND NUCLIDE TRAP INSTALLATION PLATFORM GRATING	ES171-0002-DE	REF'D FROM 697484	
		ES171-0045-BM?				
	698356	ES171-0045-DD	PLATFORM GRATING PPC SHIELDED COLD TRAP & NUCLIDE TRAP INSTALLATION	ES171-0002-DE	PICKED UP REFERENCE FROM EDM5 USING 'ES171' PREFIX, ASSIGNED & INACTIVE	
	698357	ES171-0046-DD	REMOVABLE PLATFORM GRATING PPC SHIELDED COLD TRAP & NUCLIDE TRAP	ES171-0002-DE	PICKED UP REFERENCE FROM EDM5 USING 'ES171' PREFIX, ASSIGNED & INACTIVE	
	698358	ES171-0047-DD	REMOVABLE PLATFORM GRATING PPC SHIELDED COLD TRAP & NUCLIDE TRAP	ES171-0002-DE	PICKED UP REFERENCE FROM EDM5 USING 'ES171' PREFIX, ASSIGNED & INACTIVE	
	698359	ES171-0048-DD	PLATFORM GRATING PPC SHIELDED COLD TRAP & NUCLIDE TRAP	ES171-0002-DE	PICKED UP REFERENCE FROM EDM5 USING 'ES171' PREFIX, ASSIGNED & INACTIVE	
	698360	ES171-0049-DD	PLATFORM GRATING PPC SHIELDED COLD TRAP & NUCLIDE TRAP	ES171-0002-DE	PICKED UP REFERENCE FROM EDM5 USING 'ES171' PREFIX, ASSIGNED & INACTIVE	
	698361	ES171-0050-DB	EBR-II - PPC SHIELDED COLD TRAP AND NUCLIDE TRAP INSTALLATION MOUNTING STUD	ES171-0002-DE	REF'D FROM 697484	
	698362	ES171-0051-DC	EBR-II - PPC SHIELDED COLD TRAP AND NUCLIDE TRAP INSTALLATION PIPE HANGER TRAPEZE BRACKET	ES171-0002-DE	REF'D FROM 697484	
	698363	ES171-0052-DC	EBR-II - PPC SHIELDED COLD TRAP AND NUCLIDE TRAP INSTALLATION PIPE HANGER TRAPEZE BRACKET	ES171-0002-DE	REF'D FROM 697484	
	698364	ES171-0053-DC	EBR-II - PPC SHIELDED COLD TRAP AND NUCLIDE TRAP INSTALLATION PIPE HANGER TRAPEZE ANGLE	ES171-0002-DE	REF'D FROM 697484	
	698365	ES171-0054-DC	EBR-II - PPC SHIELDED COLD TRAP AND NUCLIDE TRAP INSTALLATION - PIPE HANGER WALL BRACKET	ES171-0002-DE	REF'D FROM 697484	
	698366	ES171-0055-DC	EBR-II - PPC SHIELDED COLD TRAP AND NUCLIDE TRAP INSTALLATION PIPE HANGER SUPPORT BRACKET	ES171-0002-DE	REF'D FROM 697484	
	698367	ES171-0056-DC	EBR-II - PPC SHIELDED COLD TRAP AND NUCLIDE TRAP INSTALLATION PIPE HANGER SUPPORT BRACKET	ES171-0002-DE	REF'D FROM 697484	
	698368	ES171-0057-DC	EBR-II - PPC SHIELDED COLD TRAP AND NUCLIDE TRAP INSTALLATION PIPE HANGER WELDMENT	ES171-0002-DE	REF'D FROM 697484	
	698369	ES171-0058-DB	EBR-II PPC SHIELDED COLD TRAP AND NUCLIDE TRAP INSTALLATION PIPE HANGER SPACER PLATE	ES171-0002-DE	REF'D FROM 697484	
	698370	ES171-0059-DB	C.G. ADAPTOR FOR 2" BELLOWS VALVE	ES171-0002-DE	REF'D FROM 697484	
	698371	ES171-0060-DB	EBR-II - PPC SHIELDED COLD TRAP AND NUCLIDE TRAP INSTALLATION - PIPE HANGER SPACER ANGLE	ES171-0002-DE	REF'D FROM 697484	
	698372	ES171-0061-DB	EBR-II - PPC SHIELDED COLD TRAP AND NUCLIDE TRAP INSTALLATION PIPE HANGER SPACER ANGLE	ES171-0002-DE	REF'D FROM 697484	
	698373	ES171-0062-DC	EBR-II - PPC SHIELDED COLD TRAP AND NUCLIDE TRAP INSTALLATION PIPE SPOOL	ES171-0002-DE	REF'D FROM 697484	
	698374	ES171-0063-DB	EBR-II - PPC SHIELDED COLD TRAP AND NUCLIDE TRAP INSTALLATION PIPE HANGER CHANNEL SUPPORT	ES171-0002-DE	REF'D FROM 697484	
	698375	ES171-0064-DB	EBR-II - PPC SHIELDED COLD TRAP AND NUCLIDE TRAP INSTALLATION PIPE HANGER POSITIONING PLATE	ES171-0002-DE	REF'D FROM 697484	
	698376	ES171-0065-DB	EBR-II - PPC SHIELDED COLD TRAP AND NUCLIDE TRAP INSTALLATION HANGER BRACKET	ES171-0002-DE	REF'D FROM 697484	
	698377	ES171-0066-DC	EBR-II - PPC SHIELDED COLD TRAP AND NUCLIDE TRAP INSTALLATION PIPE HANGER WALL BRACKET	ES171-0002-DE	REF'D FROM 697484	
	698378	ES171-0067-DB	EBR-II - PPC SHIELDED COLD TRAP AND NUCLIDE TRAP INSTALLATION HANGER BRACKET	ES171-0002-DE	REF'D FROM 697484	
	698379	ES171-0068-DB	EBR-II - PPC SHIELDED COLD TRAP AND NUCLIDE TRAP INSTALLATION PIPE HANGER ANGLE CLIP	ES171-0002-DE	REF'D FROM 697484	
	698380	ES171-0069-DB	EBR-II - PPC SHIELDED COLD TRAP AND NUCLIDE TRAP INSTALLATION PIPE HANGER SPACE PLATE	ES171-0002-DE	REF'D FROM 697484	
	698381	ES171-0070-DC	EBR-II - PPC SHIELDED COLD TRAP AND NUCLIDE TRAP INSTALLATION PIPE HANGER ANGLE BRACKET	ES171-0002-DE	REF'D FROM 697484	
	698382	ES171-0071-DB	RIGGING DIAGRAM FOR PLACEMENT OF PRIMARY SHIELDED COLD TRAP	ES171-0002-DE	REF'D FROM 697484	
	698383	ES171-0072-DB	RIGGING DIAGRAM FOR SHIELDED NUCLIDE TRAP	ES171-0002-DE	REF'D FROM 697484	
	698754	ES171-0092-EE	EBR-II, ICC-III CONTROL CENTER ARRANGEMENT & ASSEMBLY	NONE LISTED	PICKED UP REFERENCE FROM EDM5 USING 'ES171' PREFIX	
	698757	ES171-0093-EE	HEATER CONTROL PANEL WIRING DIAGRAM REPL W/ X-ID-700-16-3C1	NONE	PICKED UP REFERENCE FROM EDM5 USING 'ES171' PREFIX, ASSIGNED & INACTIVE	
	698758	ES171-0094-EE	TEMP & LEAK DETECTOR PANEL WIRING DIAGRAM REPL W/ X-ID-700-16-3C2	NONE	PICKED UP REFERENCE FROM EDM5 USING 'ES171' PREFIX, ASSIGNED & INACTIVE	
	698759	ES171-0095-EE	FLOW & PUMP PANEL WIRING DIAGRAM REPL W/ X-ID-700-16-3C3	NONE	PICKED UP REFERENCE FROM EDM5 USING 'ES171' PREFIX, CANCELED	
	698760	ES171-0096-EE	PRESSURE INDICATING PANEL WIRING DIAGRAM REPL W/ X-ID-700-16-3C4	NONE	PICKED UP REFERENCE FROM EDM5 USING 'ES171' PREFIX, CANCELED	
	698761	ES171-0097-EE	EBR-II PRIMARY PURIFICATION SYSTEM HEATERS - SOLID STATE RELAY JUNCTION BOX 'R1' WIRING DIAGRAM	NONE LISTED	PICKED UP REFERENCE FROM EDM5 USING 'ES171' PREFIX, FOUND IN EDM5	
	698762	ES171-0098-EE	EBR-II PRIMARY PURIFICATION CELL LEAK DETECTOR	NONE LISTED	PICKED UP REFERENCE FROM EDM5 USING 'ES171' PREFIX, FOUND IN EDM5	
	698763	ES171-0099-EE	EBR-II PRIMARY PURIFICATION SYSTEM THERMOCOUPLE LOCATIONS	NONE LISTED	PICKED UP REFERENCE FROM EDM5 USING 'ES171' PREFIX	
	698764	ES171-0100-EE	EBR-II PRIMARY PURIFICATION SYSTEM TRACE HEATER INSTALLATION	NONE LISTED	PICKED UP REFERENCE FROM EDM5 USING 'ES171' PREFIX	
	698765	ES171-0101-EE	PRESSURE INDICATING PANEL DETAIL	ES171-0092-EE	PICKED UP REFERENCE FROM EDM5 USING 'ES171' PREFIX, ASSIGNED & INACTIVE	
	698766	ES171-0102-EE	FLOW & PUMP PANEL DETAIL	ES171-0092-EE	PICKED UP REFERENCE FROM EDM5 USING 'ES171' PREFIX, ASSIGNED & INACTIVE	
	698767	ES171-0103-EE	HEATER PANEL DETAIL	NONE LISTED	PICKED UP REFERENCE FROM EDM5 USING 'ES171' PREFIX, ASSIGNED & INACTIVE	
	698768	ES171-0104-EE	TEMPERATURE & LEAK DETECTOR PANEL DETAIL	ES171-0092-EE	PICKED UP REFERENCE FROM EDM5 USING 'ES171' PREFIX, ASSIGNED & INACTIVE	
	698769	ES171-0105-ED	CONTROL CENTER FIELD INSTALLATION	NONE LISTED	PICKED UP REFERENCE FROM EDM5 USING 'ES171' PREFIX, ASSIGNED & INACTIVE	
		ES171-0107-BM				
X	698770	ES171-0107-EE	EBR-II PRIMARY PURIFICATION CELL NO. 2 NUCLIDE TRAP ASSEMBLY	ES171-0002-DE	PICKED UP REFERENCE FROM EDM5 USING 'ES171' PREFIX	
	698771	ES171-0108-EE	NO. 2 NUCLIDE TRAP WELDMENT	ES171-0107-EE	PICKED UP REFERENCE FROM EDM5 USING 'ES171' PREFIX, ASSIGNED & INACTIVE	
	698772	ES171-0109-DC	EBR-II - PPC - FLEXIBLE SHAFT BRACKET COLD TRAP BYPASS	ES171-0002-DE	REF'D FROM 697484	
	698773	ES171-0110-DD	PRIMARY SAMPLER HEATER, T/C & LEVEL PROBE LAYOUT	NONE LISTED	PICKED UP REFERENCE FROM EDM5 USING 'ES171' PREFIX, ASSIGNED & INACTIVE	
	698774	ES171-0111-DD	TRACE HEATER LAYOUT PRIMARY SAMPLING LOOP	NONE LISTED	PICKED UP REFERENCE FROM EDM5 USING 'ES171' PREFIX, ASSIGNED & INACTIVE	
	698775	ES171-0112-DD	T/C LAYOUT PRIMARY SAMPLING LOOP	NONE LISTED	PICKED UP REFERENCE FROM EDM5 USING 'ES171' PREFIX, ASSIGNED & INACTIVE	
	698779	ES171-0116-ED	SHIELD WELDMENT - 3000 CURIE CESIUM TRAP ASSEMBLY	ES171-0014-ED	PICKED UP REFERENCE FROM EDM5 USING ES171-0014	
		ES171-0117-BM?				
	698780	ES171-0117-ED	SHIELD CAP - 3000 CURIE CESIUM TRAP ASSEMBLY	ES171-0014-ED	PICKED UP REFERENCE FROM EDM5 USING ES171-0014	
		ES327-0001-DE			REF'D FROM 697484 SH2, SECTION A, NO RECORD IN EDM5	
	1	EB-1-23001-F			THIS DRAWING MAY NOT EXIST, MAY BE 25001 LISTED BELOW	
	1	EB-1-23002-F			THIS DRAWING MAY NOT EXIST, MAY BE 25002 LISTED BELOW	
	1	EB-1-23444-D				
	1	EB-1-23403-B77		EB-1-25054-E7		
		EB-1-25000-B/M			REF'D FROM 692790, NUMBER SEMI-UNLEGIBLE	
	1	692777	EB-1-25000-D			
	1	692778	EB-1-25001-F			
X	692779	EB-1-25002-F	REACTOR SYSTEM VERTICAL SECTION B-B	EB-1-25000-D		
X	692780	EB-1-25003-F	REACTOR SYSTEM N.W. FLOOR PLAN	EB-1-25000-D		
X	692781	EB-1-25004-F	REACTOR SYSTEM S.E. FLOOR PLAN	EB-1-25000-D		
	692782	EB-1-25005-F		EB-1-25001-F		

	1	692790	EB-1-25056-E	INNER BLANKET SUB-ASSEMBLY	NONE GIVEN	DRAWING A LITTLE fuzzy. MAY NEED TO VERIFY CALLOUTS FROM ORIGINAL	
			EB-1-25056-PL?				
		692791	EB-1-25058-C	NONE GIVEN	EB-1-25056-E	PICKED UP REFERENCE FROM EDMS	
		692792	EB-1-25059-C	NONE GIVEN	EB-1-25056-E	CALLED OUT ON 692790, INACTIVE DRAWINGS, STATUS INDICATED ASSIGNED	
		692793	EB-1-25060-D	NONE GIVEN	EB-1-25056-E	CALLED OUT ON 692790, INACTIVE DRAWINGS, STATUS INDICATED ASSIGNED	
X		692794	EB-1-25061-D	ELEMENT- OUTER & INNER BLANKET	EB-1-25056-E & 25244-E	CALLED OUT ON 692790	
			EB-1-25061-PL?				
		692795	EB-1-25062-A	NONE GIVEN	EB-1-25061-D	CALLED OUT ON 692794, INACTIVE DRAWING, STATUS INDICATED ASSIGNED	
		692797	EB-1-25064-A	NONE GIVEN	EB-1-25061-D (CALLOUT) EB-1-38380-D (EDMS)	CALLED OUT ON 692794, INACTIVE DRAWING, STATUS INDICATED ASSIGNED	
			EB-1-25065-A?			CALLED OUT ON 692794	
X	1	693219	EB-1-25179-F	PRIMARY TANK ASSEMBLY	EB-1-25001-F EB-1-25002-F		
X	1	693220	EB-1-25180-E	DETAND AND SECTIONS FOR PRIMARY TANK ASSEMBLY	EB-1-25179-F		
X	1	693221	EB-1-25181-E	DETAND AND SECTIONS FOR PRIMARY TANK ASSEMBLY	EB-1-25179-F		
X		693222	EB-1-25182-D	NOZZLE SCHEDULE	EB-1-25179-F		
X		693223	EB-1-25183-D	NOZZLE LOCATIONS 5.425	EB-1-25179-F		MP
X	1	693224	EB-1-25184-D	NOZZLE LOCATIONS 9.75	EB-1-25179-F		MP
X		693225	EB-1-25185-D	NOZZLE LOCATIONS 7.875	EB-1-25179-F		MP
X		693226	EB-1-25186-D	NOZZLE LOCATIONS 3.375	EB-1-25179-F		MP
X		693227	EB-1-25187-D	NOZZLE LOCATIONS 11.875	EB-1-25179-F		MP
	1	693228	EB-1-25189-D		EB-1-25179-F	REF'D ON EB-1-25400	
X		693229	EB-1-25190-D	NOZZLE LOCATIONS 68 X 48	EB-1-25179-F	REF'D FROM 691522 UPPER LEFT CORNER, INACTIVE DRAWING, STATUS INDICATES ASSIGNED	MP
X		693230	EB-1-25191-D	NOZZLE LOCATIONS 20 X 58	EB-1-25179-F		MP
X		693231	EB-1-25192-D	NOZZLE LOCATIONS 65	EB-1-25179-F		MP
X		693232	EB-1-25193-D	NOZZLE LOCATIONS 7.25	EB-1-25179-F		MP
X		693233	EB-1-25194-D	NOZZLE LOCATIONS 7.5	EB-1-25179-F		MP
X	1	693234	EB-1-25195-D	NOZZLE LOCATIONS 30.0	EB-1-25179-F		MP
X		693235	EB-1-25196-D	NOZZLE LOCATIONS 13.0	EB-1-25179-F		MP
X		693236	EB-1-25197-D	NOZZLE LOCATIONS 19.0	EB-1-25179-F		MP
X		693237	EB-1-25198-D	NOZZLE LOCATIONS 7.75	EB-1-25179-F		MP
X		693238	EB-1-25199-D	NOZZLE LOCATIONS 13.5	EB-1-25179-F		MP
X		693240	EB-1-25201-D	NOZZLE LOCATIONS 65	EB-1-25179-F		MP
	1	693241	EB-1-25202-D		EB-1-25208-F		
	1	693242	EB-1-25203-D		EB-1-25208-F		
	1	693243	EB-1-25204-D		EB-1-25208-F		
	1	693244	EB-1-25205-D		EB-1-25208-F		
	1	693245	EB-1-25206-D		EB-1-25208-F		
	1	693246	EB-1-25207-D		EB-1-25208-F		
X	1	693247	EB-1-25209-F	EBR-II PRIMARY TANK SUPPORT STRUCTURE	EB-1-25000-F		
		693249	EB-1-25210-F	EBR-II UPPER SUPPORT STRUCTURE PARTS (ORIENTATION)	EB-1-25208-F		
	1	693248	EB-1-25211-F			FOUND UNDER SEARCH FOR EB-1-25211. NO TITLE OR DRAWING INFO ON DRAWING	
			EB-1-25219-B/M			NO RECORD IN EDMS	
	1	693256	EB-1-25219-F		EB-1-25274-E	LISTED ON ORIGINAL DRAWING LIST BUT NOT PROVIDED OR FOUND	
			EB-1-25220-B/M			NO RECORD IN EDMS	
	1	693257	EB-1-25220-D		EB-1-25274-E	REF'D ON EB-1-25219. NO RECORD IN EDMS	
	1	693258	EB-1-25222-D		EB-1-25219-F	CALLED OUT ON EB-1-25219. NO RECORD IN EDMS	
	1	693259	EB-1-25223-D		EB-1-25219-F	CALLED OUT ON EB-1-25219. NO RECORD IN EDMS	
	1	693260	EB-1-25224-D		EB-1-25219-F	CALLED OUT ON EB-1-25219. NO RECORD IN EDMS	
	1	693261	EB-1-25225-B		EB-1-25219-F	CALLED OUT ON EB-1-25219. NO RECORD IN EDMS	
	1	693262	EB-1-25226-B		EB-1-25219-F	CALLED OUT ON EB-1-25219. NO RECORD IN EDMS	
X	1	693264	EB-1-25229-E	HANDLER SUB-ASSEMBLY FOR PRIMARY TANK ASSEMBLY	EB-1-25179-F		
X		753780	EB-1-25231-BM	BILL OF MATERIAL	NA		
X		693265	EB-1-25231-F	EBR-II PRIMARY SYSTEM REACTOR INLET PIPING	EB-1-25002-F		
X		693267	EB-1-25244-D	NOZZLE LOCATIONS 3.375	EB-1-25179-F		MP
	1	693270	EB-1-25247-D		EB-1-25179-F		
		693271	EB-1-25248-F	EBR-II PRIMARY TANK SUPPORT STRUCTURE BOTTOM PLATES	EB-1-25208-F		
X	1	693272	EB-1-25249-E	UPPER SUPPORT STRUCTURE SKEEL PARTS	EB-1-25208-F		
		693274	EB-1-25251-F	EBR-II HEAT EXCHANGER	EB-1-25254-F		
			EB-1-25254-B/M			NO RECORD IN EDMS	
	1	693276	EB-1-25254-F	SHIELD PLUG AND HEAT EXCHANGER	EB-1-25221-F	CALLED OUT ON EB-1-25231	
		693277	EB-1-25257-E	EBR-II HEAT EXCHANGER LOWER DIFFUSER	EB-1-25251-F		
		693278	EB-1-25258-D		EB-1-25251-F	CALLED OUT ON EB-1-25251. NO RECORD IN EDMS	
X		693280	EB-1-25260-D		EB-1-25179-F		
	1	693287	EB-1-25264-E	OUTER BLANKET SUB-ASSEMBLY			
			EB-1-25244-PL?				
X		693283	EB-1-25244-D		EB-1-25179-F		
	1	693285	EB-1-25248-D		EB-1-25208-F	REF'D ON EB-1-25210. NO RECORD IN EDMS	
X		693289	EB-1-25273-D	SAFETY ROD SUPPORT BEAM	EB-1-25181-F		MP
			EB-1-25274-B/M			NO RECORD IN EDMS	
X		693290	EB-1-25274-E	EBR-II AUXILIARY PUMP ASSEMBLY	NONE GIVEN		
	1	693290	EB-1-25274-E	EBR-II AUXILIARY PUMP ASSEMBLY	EB-1-27244-E	REF FROM EB-1-25745-E	
	1	693291	EB-1-25275-C		EB-1-25274-E	CALLOUT ON EB-1-25274. NO RECORD IN EDMS	

	1	EB-1-25295-B/M			NO RECORD IN EDMS	
	1	693404 EB-1-25295-F		EB-1-25400-F	CALLED OUT ON EB-1-25400	
	1	693404 EB-1-25295-F		EB-1-25400-F	REFD ON EB-1-25400	
	1	693452 EB-1-25344-E		ID-10-11942	ON ORIGINAL DRAWING LIST, NO RECORD IN EDMS	
	1	EB-1-25359-B/M			NO RECORD IN EDMS	
	1	693464 EB-1-25359-F		EB-1-25404-D	CALLED OUT ON EB-1-25400	
	1	EB-1-25381-B/M			NO RECORD IN EDMS	
	1	693902 EB-1-25381-F SAFETY ROD DRIVE MAIN ASSY		EB-1-25400-F	CALLED OUT ON EB-1-25400	
	1	EB-1-25394-B/M			NO RECORD IN EDMS	
	1	693915 EB-1-25394-C		EB-1-25400-F	CALLED OUT ON EB-1-25400	
	1	EB-1-25399-B/M			NO RECORD IN EDMS	
	1	693918 EB-1-25399-F		EB-1-25400-F	CALLED OUT ON EB-1-25400	
	1	EB-1-25400-B/M				
	1	693919 EB-1-25400-F		EB-1-25002-F	NO RECORD IN EDMS	
X	769770	EB-1-25400-F EBR II SAFETY ROD DRIVE MAIN ASSEMBLY		EB-1-25002-F	REFD VIA EDMS SEARCH FOR EB-1-25400	
	1	EB-1-25404-B/M			NO RECORD IN EDMS	
	1	693922 EB-1-25404-D		EB-1-25400-F	CALLED OUT ON EB-1-25399	
	1	EB-1-25416-B/M			NO RECORD IN EDMS	
	1	693934 EB-1-25416-F EBR-II NEUTRON SHIELDING		EB-1-25001-F		
X	1	693935 EB-1-25418-D NEUTRON SHIELDING INNER ENCLOSURE		EB-1-25416-F	CALLED OUT ON EB-1-25416	
	1	693936 EB-1-25419-E		EB-1-25416-F	CALLED OUT ON EB-1-25416, NO RECORD IN EDMS	
	1	693937 EB-1-25420-D		EB-1-25416-F	CALLED OUT ON EB-1-25416, NO RECORD IN EDMS	
	1	693938 EB-1-25421-D		EB-1-25416-F	CALLED OUT ON EB-1-25416, NO RECORD IN EDMS	
	1	693948 EB-1-25436-F		EB-1-25275-C		
	1	693949 EB-1-25437-C		EB-1-25274-E		
X	1	693958 EB-1-25438-C INSULATION BELLOW		EB-1-25219-F	CALLED OUT ON EB-1-25219	
	1	693951 EB-1-25439-C		EB-1-25219-F		
	1	693953 EB-1-25441-D		EB-1-25400-F	CALLED OUT ON EB-1-25399	
	1	EB-1-25442-B/M			NO RECORD IN EDMS	
	1	693954 EB-1-25442-E		EB-1-25400-F	CALLED OUT ON EB-1-25400	
	1	693955 EB-1-25448-E		EB-1-25179-F		
X	693960	EB-1-25457-D SHIELDING PLATES ASSY		EB-1-25181-F		MP
X	693961	EB-1-25458-D NOZZLE 9.75		EB-1-25184-D		MP
X	693962	EB-1-25459-D NOZZLE 5.425		EB-1-25183-D		MP
X	693963	EB-1-25460-D NOZZLE 7.875		EB-1-25185-D		MP
X	693964	EB-1-25461-D NOZZLE 7.25		EB-1-25193-D		MP
X	693965	EB-1-25462-D NOZZLE 20.0		EB-1-25195-D		MP
X	693966	EB-1-25463-D NOZZLE 13.0		EB-1-25194-D		MP
X	693967	EB-1-25464-D NOZZLE 19.0		EB-1-25197-D		MP
X	693968	EB-1-25465-D NOZZLE 68 X 48		EB-1-25190-D		MP
X	693969	EB-1-25466-D NOZZLE 7.75		EB-1-25198-D		MP
X	693970	EB-1-25467-D NOZZLE 13.5		EB-1-25199-D		MP
X	693971	EB-1-25468-D NOZZLE 7.5		EB-1-25194-D		MP
X	693973	EB-1-25470-D NOZZLE 20 X 58		EB-1-25191-D		MP
X	693974	EB-1-25471-D NOZZLE 45		EB-1-25201-D		MP
X	693975	EB-1-25472-D NOZZLE 45		EB-1-25192-D		MP
X	693977	EB-1-25474-D NOZZLE 11.875		EB-1-25187-D		MP
X	693978	EB-1-25475-D NOZZLE 3.375		EB-1-25184-D		MP
X	693979	EB-1-25476-D NOZZLE 3.375		EB-1-25244-D		MP
X	693980	EB-1-25477-D		EB-1-25400-F	CALLED OUT ON EB-1-25400	
	1	693987 EB-1-25484-B		EB-1-25619-F		
	1	694047 EB-1-25557-D		EB-1-25745-E	REF FROM EB-1-25745-E & EB-1-27312	
	1	694049 EB-1-25559-F		EB-1-25745-E	REF FROM EB-1-25745-E	
	1	694374 EB-1-25564-F		EB-1-25745-E	REF FROM EB-1-25745-E	
	1	694376 EB-1-25566-F		EB-1-25745-E	REF FROM EB-1-25745-E	
	1	694378 EB-1-25570-E		EB-1-25745-E	REF FROM EB-1-25745-E	
	1	694380 EB-1-25572-D		EB-1-25475-E	REF FROM EB-1-25745-E	
	1	EB-1-25573-B/M			NO RECORD IN EDMS	
	1	694381 EB-1-25573-D		EB-1-27249-D	CALLED OUT ON EB-1-27249, NO RECORD IN EDMS	
	1	694396 EB-1-25592-D NOZZLE PLUG ASSY		EB-1-25185-D		
X	694436	EB-1-25448-A INNER & OUTER BLANKET PIN		EB-1-25061-D	PICKED UP REFERENCE FROM EDMS	
X	694439	EB-1-25453-F SODIUM PURIFICATION NOZZLE PLUG #3 FOR PRIMARY TANK HKF EQUIP #R1-X275		EB-1-25745-E		
	1	694440 EB-1-25454-B		EB-1-25653-F	CALLED OUT ON EB-1-25453, NO RECORD IN EDMS	
	1	694445 EB-1-25459-F		EB-1-25654-D	REF FROM EB-1-25745-E	
X	1	694514 EB-1-25746-B PRIMARY TANK NOZZLE PLUG LOCATION		EB-1-20803-F		
X	694888	EB-1-25812-F SUBASSEMBLY REACTOR VESSEL GRID		EB-1-25809-E	REFD FROM EB-1-27312	
	1	EB-1-25847-B/M			NO RECORD IN EDMS	
	1	694923 EB-1-25847-D		EB-1-25231-F	CALLED OUT ON EB-1-25231, NO RECORD IN EDMS	
	1	694960 EB-1-25916-E		EB-1-25244-D		
	1	695005 EB-1-25961-E EBR II ROD SUBASSEMBLIES (DIMENSION COMPARISON)		NONE	NEXT LEVEL ASSEMBLY FROM 704825	
		EB-1-25961-PL7				

	1	EB-1-25974			
		695374	EB-1-26021-B	NONE GIVEN	EB-1-25214-E
			EB-1-26050-B/M		REF'D FROM 692790
					NO RECORD IN EDMS
X		695402	EB-1-26050-E	EBR-II PRIMARY SYSTEM REACTOR OUTLET PIPING	EB-1-25231-F
					NO RECORD IN EDMS
X		695461	EB-1-26111-E	REACTOR VESSEL SHELL EBR II	EB-1-25231-F
					NO RECORD IN EDMS
		697202	EB-1-26761-E	NONE GIVEN	EB-1-25231-F
					NO RECORD IN EDMS
			EB-1-26761-PL7		
			EB-1-26800-B/M		NO RECORD IN EDMS
X	1	697237	EB-1-26800-E	ASSEMBLY REACTOR	EB-1-25001-F
			EB-1-27179-B/M		REF'D ON EB-1-25416
					NO RECORD IN EDMS
X		698065	EB-1-27179-E	EBR-II PRIMARY SYSTEM REACTOR INLET PIPING SUPPORT	EB-1-25231-F
			EB-1-27180-C		NO RECORD IN EDMS
		698067	EB-1-27181-B		EB-1-27179-E
			EB-1-27182-B		EB-1-27179-E
		698069	EB-1-27183-B		EB-1-27179-E
		698070	EB-1-27184-B		EB-1-27179-E
			EB-1-27235-C		EB-1-25416-F
1		698113	EB-1-27235-C		EB-1-26050-E
			EB-1-27237-A		EB-1-26050-E
		698115	EB-1-27238-A		EB-1-26050-E
		698116	EB-1-27239-A		EB-1-26050-E
		698117	EB-1-27240-C		EB-1-26050-E
		698118	EB-1-27241-C		EB-1-26050-E
		698119	EB-1-27242-C		EB-1-26050-E
		698120	EB-1-27243-B/M		EB-1-26050-E
			EB-1-27243-C		EB-1-26050-E
		698121	EB-1-27244-B/M		EB-1-26050-E
			EB-1-27244-E		EB-1-26050-E
X		774175	EB-1-27244-E	INSTRUMENTATION SENSORS FOR PRIMARY SODIUM LOOP EBR-II REACTOR OUTLET PIPING	EB-1-26050-E
		698122	EB-1-27244-E		EB-1-26050-E
		698123	EB-1-27245-C		EB-1-26050-E
			EB-1-27246-B/M		EB-1-26050-E
		698124	EB-1-27246-D		EB-1-25416-F
		698125	EB-1-27247-D		EB-1-26050-E
			EB-1-27249-B/M		EB-1-25416-F
					NO RECORD IN EDMS
X		698127	EB-1-27249-D	SEAL SHAFT ASSEMBLY THROTTLE VALVE	EB-1-25231-F
					EB-1-25231-F
1		698128	EB-1-27250-A		EB-1-27249-D
			EB-1-27251-A		EB-1-27249-D
1		698129	EB-1-27252-B		EB-1-27249-D
1		698130	EB-1-27253-B		EB-1-27249-D
1		698131	EB-1-27253-B		EB-1-27249-D
1			EB-1-27253-B/M		EB-1-27249-D
1			EB-1-27255-B/M		EB-1-27249-D
1		698133	EB-1-27255-C		EB-1-27249-D
1		698172	EB-1-27300-D		EB-1-25416-F
1		698173	EB-1-27301-D		EB-1-25416-F
1		698432	EB-1-27302-D		EB-1-25416-F
1		698433	EB-1-27303-D		EB-1-25416-F
1		698434	EB-1-27304-D		EB-1-25416-F
1		698435	EB-1-27305-D		EB-1-25416-F
1		698436	EB-1-27306-D		EB-1-25416-F
1		698437	EB-1-27307-D		EB-1-25416-F
1		698438	EB-1-27308-D		EB-1-25416-F
1		698439	EB-1-27309-D		EB-1-25416-F
1		698440	EB-1-27310-D		EB-1-25416-F
1		698441	EB-1-27311-D		EB-1-25416-F
1			EB-1-27312-B/M		EB-1-25416-F
					NO RECORD IN EDMS
X	1	698442	EB-1-27312-E	PRESSURE AND TEMPERATURE INSTRUMENTS - EBR-II VESSEL	EB-1-25416-F
		698443	EB-1-27313-B		EB-1-25416-F
					EB-1-25416-F
1		691522	EB-1-27544-D	EBR-II PRIMARY SYSTEM PUMP IN PRESSURE SENSING INSTALLATION	EB-1-25416-F
			EB-1-27544-PL7		EB-1-25416-F
					NO RECORD IN EDMS
		691523	EB-1-27545-B	NO TITLE GIVEN	EB-1-27544-D
1		691926	EB-1-27679-B		EB-1-25274-E
		691934	EB-1-27689-F	BLANKET REGION CORE	EB-1-25961-E
1		692049	EB-1-27804-B		EB-1-25274-E
1		692460	EB-1-27954-C		EB-1-25400-F
1			EB-1-27955-B/M		EB-1-25400-F
1		692461	EB-1-27955-C		EB-1-25400-F
1			EB-1-27956-B/M		EB-1-25400-F
1		692462	EB-1-27956-C		EB-1-25400-F
1		692463	EB-1-27957-B		EB-1-25400-F
1			EB-1-27957-B/M		EB-1-25400-F
1		692464	EB-1-27958-B		EB-1-25400-F
1			EB-1-27958-B/M		EB-1-25400-F
					NO RECORD IN EDMS

	1	692474	EB-1-27971-D	EB-1-25208-F	
		692489	EB-1-27995-E	EB-1-25004-F	CALLOUT ON EB-1-25003 & 25004, NO RECORD IN EDMS
		693022	EB-1-28336-F	EB-1-25004-F	CALLOUT ON EB-1-25004, NO RECORD IN EDMS
	4		EB-1-28430-E		CALLOUT ON EB-1-25004, NO RECORD IN EDMS
		693540	EB-1-28432-B	EB-1-38019-D	NEXT LEVEL ASSEMBLY FROM EB-1-28433, NO RECORD IN EDMS
		693541	EB-1-28433	EB-1-28432-E	REF'D ON EB-1-25003, NO RECORD IN EDMS
		693549	EB-1-28441-D	EB-1-25004-F	CALLOUT ON EB-1-25004, NO RECORD IN EDMS
	4	693549	EB-1-28441-E	EB-1-25004-F	CALLOUT ON EB-1-25004, NO RECORD IN EDMS
	1	693616	EB-1-28515-B	EB-1-25438-C	CALLED OUT ON EB-1-26050
	1	693617	EB-1-28516-C	EB-1-25438-C	CALLED OUT ON EB-1-26050
	1		EB-1-28734-B/M		NO RECORD IN EDMS
	1		EB-1-28734-E		CALLLED OUT ON EB-1-25400
	1	694600	EB-1-28807-B	EB-1-25400-F	
		694633	EB-1-28857-E	EB-1-28887-E	CALLOUT ON EB-1-25004, NO RECORD IN EDMS
		694638	EB-1-28862-A	EB-1-28857-E	CALLOUT ON EB-1-25004, NO RECORD IN EDMS
	1	694652	EB-1-28878-C	EB-1-27249-D	CALLLED OUT ON EB-1-27249, NO RECORD IN EDMS
	1	694653	EB-1-28879-B	EB-1-27249-D	CALLLED OUT ON EB-1-27249, NO RECORD IN EDMS
	1	694655	EB-1-28881-B	EB-1-25274-E	
		694661	EB-1-28887-E	EB-1-25003-F	CALLOUT ON EB-1-25003, NO RECORD IN EDMS
	1	695040	EB-1-28950-A	EB-1-25274-E	
	1	695059	EB-1-28972-B	EB-1-25274-F	
	1	695099	EB-1-29020-F	EB-1-29049-E	
X	1	695138	EB-1-29049-E	EB-1-29049-E	
			PRIMARY TANK COVER, PLUS NOZZLE POSITIONING ARRANGEMENT		
	1	695135	EB-1-29056-B	EB-1-25400-F	CALLLED OUT ON EB-1-25400
	1	695136	EB-1-29057-B	EB-1-25400-F	CALLLED OUT ON EB-1-25400
		695603	EB-1-29242-A	EB-1-27244-E	CALLLED OUT ON EB-1-27244, NO RECORD IN EDMS
		696045	EB-1-29367-E	EB-1-25004-F	CALLOUT ON EB-1-25004, NO RECORD IN EDMS
	1	696880	EB-1-29455-D	EB-1-25002-F	
	1	696887	EB-1-29462-E	EB-1-25000-D	
		696887	EB-1-29462-E	EB-1-25003-F	CALLOUT ON EB-1-25003, NO RECORD IN EDMS
	4	697345	EB-1-29885-E	EB-1-25004-F	CALLOUT ON EB-1-25004, NO RECORD IN EDMS
	4	697346	EB-1-29887-E	EB-1-25004-F	CALLOUT ON EB-1-25004, NO RECORD IN EDMS
	4	697347	EB-1-29888-E	EB-1-25004-F	CALLOUT ON EB-1-25004, NO RECORD IN EDMS
	4	697348	EB-1-29889-F	EB-1-25004-F	CALLOUT ON EB-1-25004, NO RECORD IN EDMS
	1	697720	EB-1-29998	EB-1-25179-F	
	1	697720	EB-1-29998-E	EB-1-25179-F	
	1	698426	EB-1-38009	EB-1-25416-F	CALLLED OUT ON EB-1-25416, NO RECORD IN EDMS
			EB-1-38019		NEXT LEVEL ASSEMBLY FROM EB-1-28432, CALLOUT ON EB-1-25003, NOTHING FOUND IN EDMS
		698296	EB-1-38066-D	EB-1-25004-F	CALLOUT ON EB-1-25004, NO RECORD IN EDMS
			EB-1-38281-E		NEXT LEVEL ASSEMBLY FROM 691701
			EB-1-38281-PL7		
		691701	EB-1-38380-D	EB-1-38281-E	NEXT LEVEL ASSEMBLY FROM 692797
			EB-1-38380-PL7		
		693718	EB-1-51081-F	NONE	NEXT LEVEL ASSEMBLY FROM 704821, INACTIVE DRAWING, STATUS INDICATES ASSIGNED
		703384	EB-1-51020-F	NONE	NEXT LEVEL ASSEMBLY FROM 704821, INACTIVE DRAWING, STATUS INDICATES ASSIGNED
		703466	EB-1-51109-D	NONE	NEXT LEVEL ASSEMBLY FROM 703467
			EB-1-51108-PL7		
		703467	EB-1-51109-D	EB-1-51108-D	NEXT LEVEL ASSEMBLY FROM 703468
			EB-1-51109-PL7		
		703469	EB-1-51110-C	EB-1-25056-E (CALLOUT) EB-1-54246-E (EDMS)	CALLLED OUT ON 692794, INACTIVE DRAWINGS, STATUS INDICATED ASSIGNED
		703468	EB-1-51110-C	EB-1-25056-E (CALLOUT) EB-1-51109-D (EDMS)	CALLLED OUT ON 692794, INACTIVE DRAWINGS, STATUS INDICATED ASSIGNED
			EB-1-51110-PL7		
		704804	EB-1-51513-C	EB-1-25056-E (CALLOUT) EB-51534-D (EDMS)	CALLLED OUT ON 692790, INACTIVE DRAWINGS, STATUS INDICATED ASSIGNED
		704817	EB-1-51524-D	EB-1-51526-C	REF'D FROM 704819
X		704819	EB-1-51526-C	EB-1-51528-C	REF'D FROM 704821
X		704820	EB-1-51527-C	EB-1-51528-C	REF'D FROM 704821
X		704821	EB-1-51528-C	EB-1-51532-E	PICKED UP REFERENCE FROM EDMS
			EB-1-51528-PL7		
X		704822	EB-1-51529-B	EB-1-51528-C	REF'D FROM 704821
		704825	EB-1-51532-E	EB-1-25961-E	NEXT LEVEL ASSEMBLY FROM 704829
			EB-1-51532-PL7		
		704829	EB-1-51534-D	EB-1-51532-E	NEXT LEVEL ASSEMBLY FROM 704806
			EB-1-51536-PL7		
		699382	EB-1-51682-E	EB-1-25961-E	NEXT LEVEL ASSEMBLY FROM 704821
			EB-1-51682-PL7		
		698980	EB-1-51801-F	EB-1-25961-E	NEXT LEVEL ASSEMBLY FROM 704821
			EB-1-51801-PL7		
		698981	EB-1-51802-F	EB-1-25961-E	NEXT LEVEL ASSEMBLY FROM 704821
			EB-1-51802-PL7		
		699703	EB-1-52052-F	EB-1-25061-E	NEXT LEVEL ASSEMBLY FROM 704821
			EB-1-52052-PL7		

[illegible]

- INITIAL HIDE-UP OVER HARD COPY DRAWINGS
- NO DOCUMENT FOUND BUT NUMBER IS REFERENCED ON OTHER DRAWINGS
- RECORD NUMBER EXISTS BUT NO DOCUMENT FOUND
- REFERENCE FOUND VIA HANDED OVER DRAWINGS, DOCUMENT FOUND ON EDMS
- ILLEGIBLE DRAWING, NEED BETTER COPY OR TRANSCRIBED ORIGINAL
- REFERENCES FOUND, CURRENTLY RESEARCHING
- FLAGGED TO REVISIT FOR ADDITIONAL REFERENCES
- DON'T BELIEVE NEED, DO NOT RETRIEVE

5. EBR-II DRAWING EXAMPLES

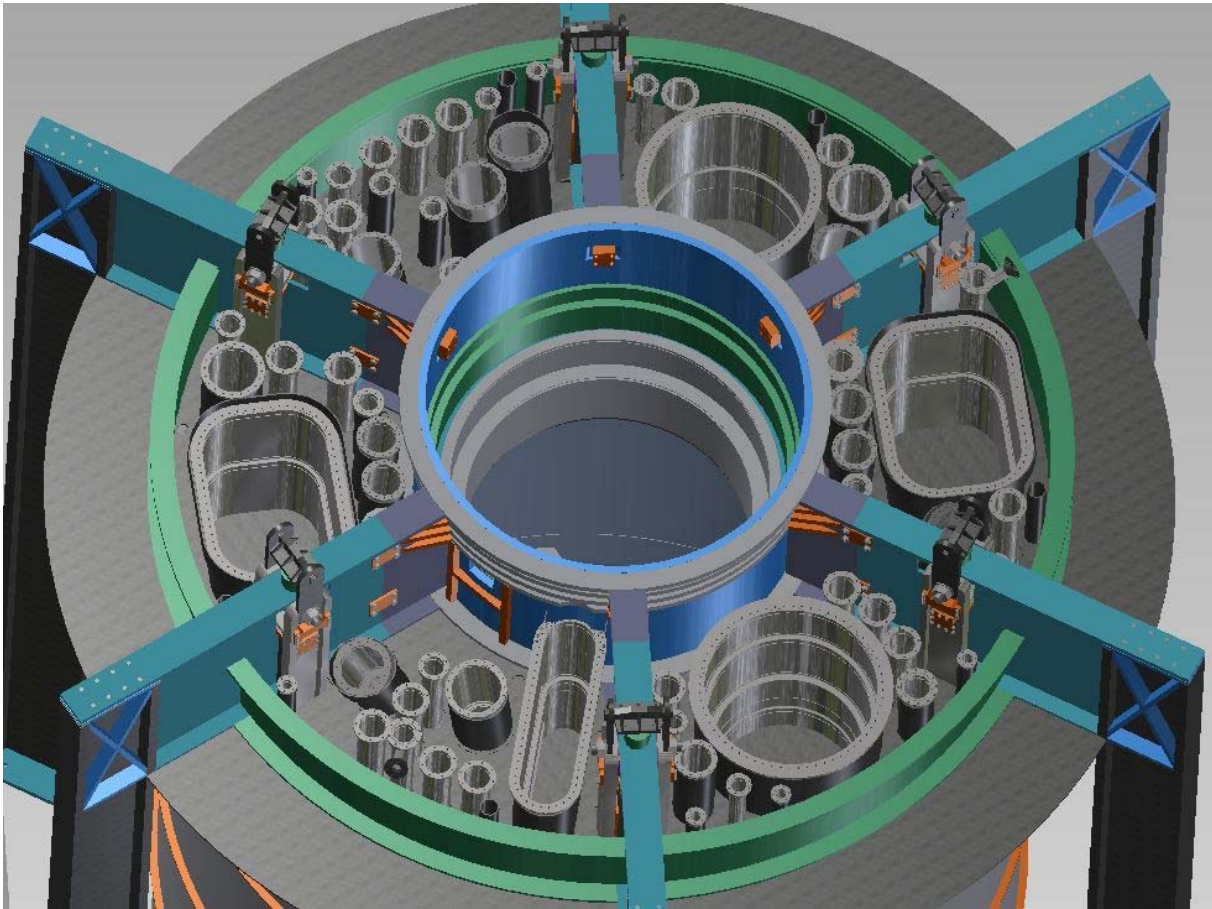


Figure 2: EBR-II Primary Tank



Figure 3: EBR-II Primary Tank Support

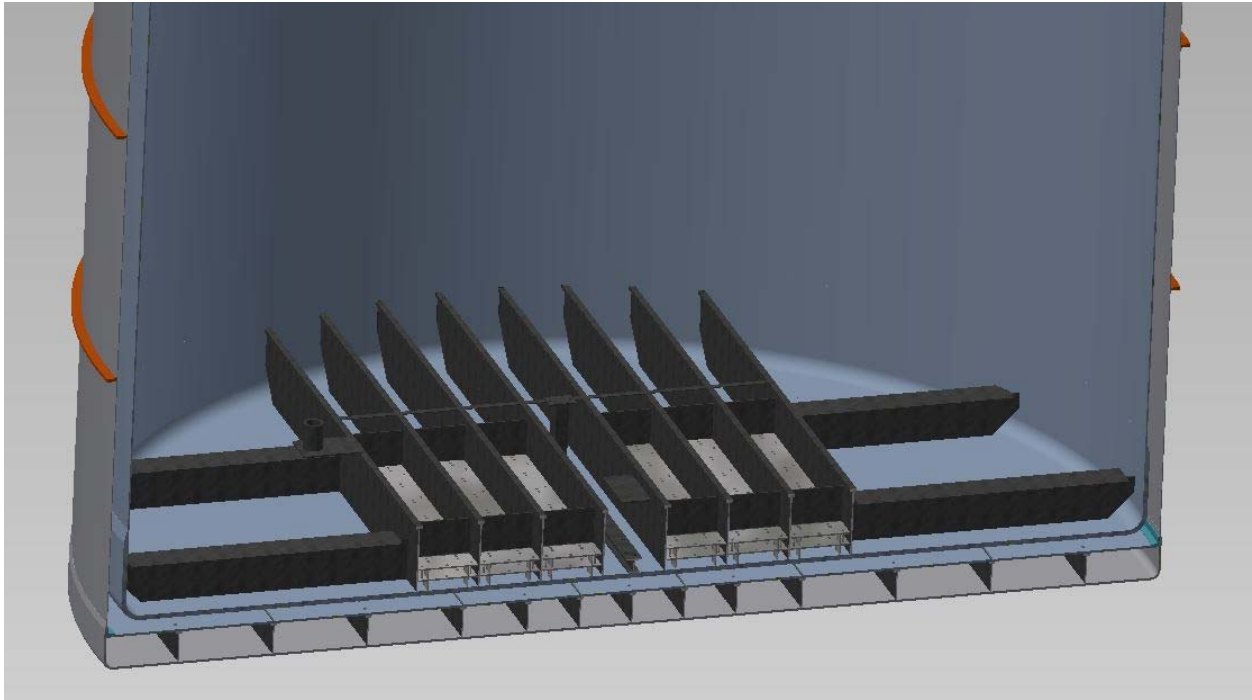


Figure 4: Primary EBR-II Tank Support Structure

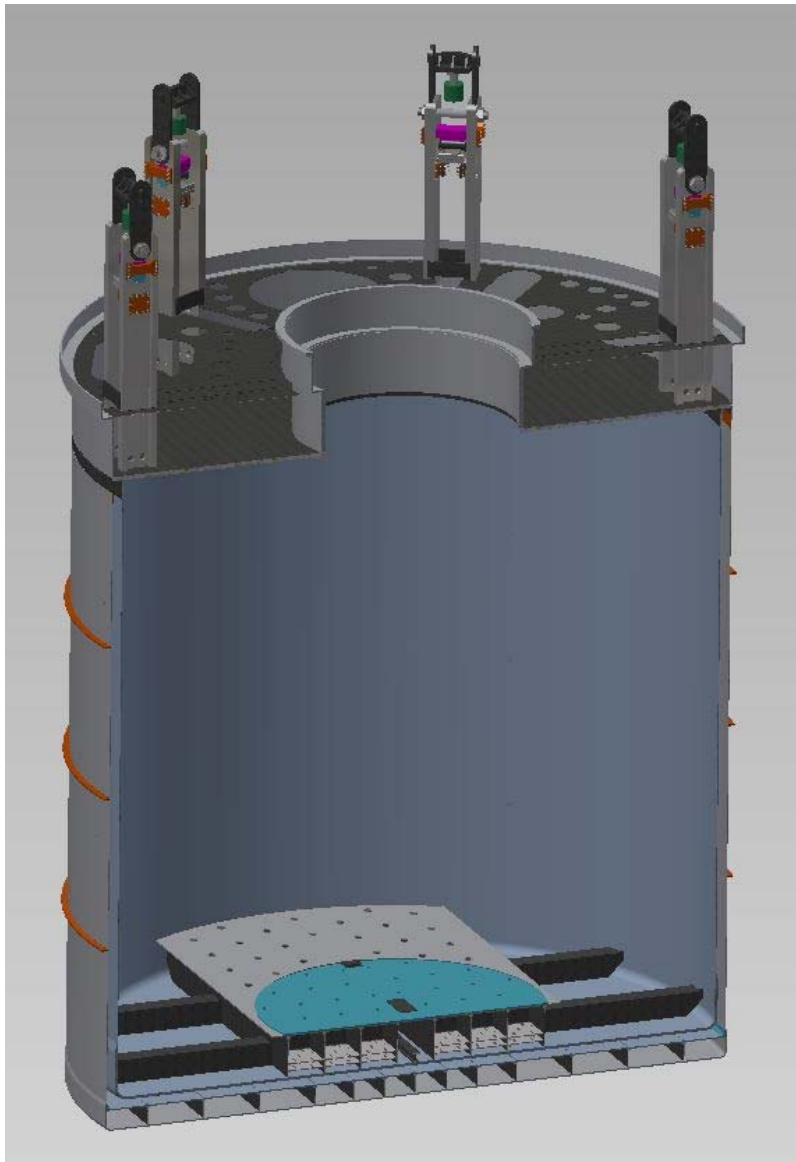


Figure 5: EBR-II Primary Tank

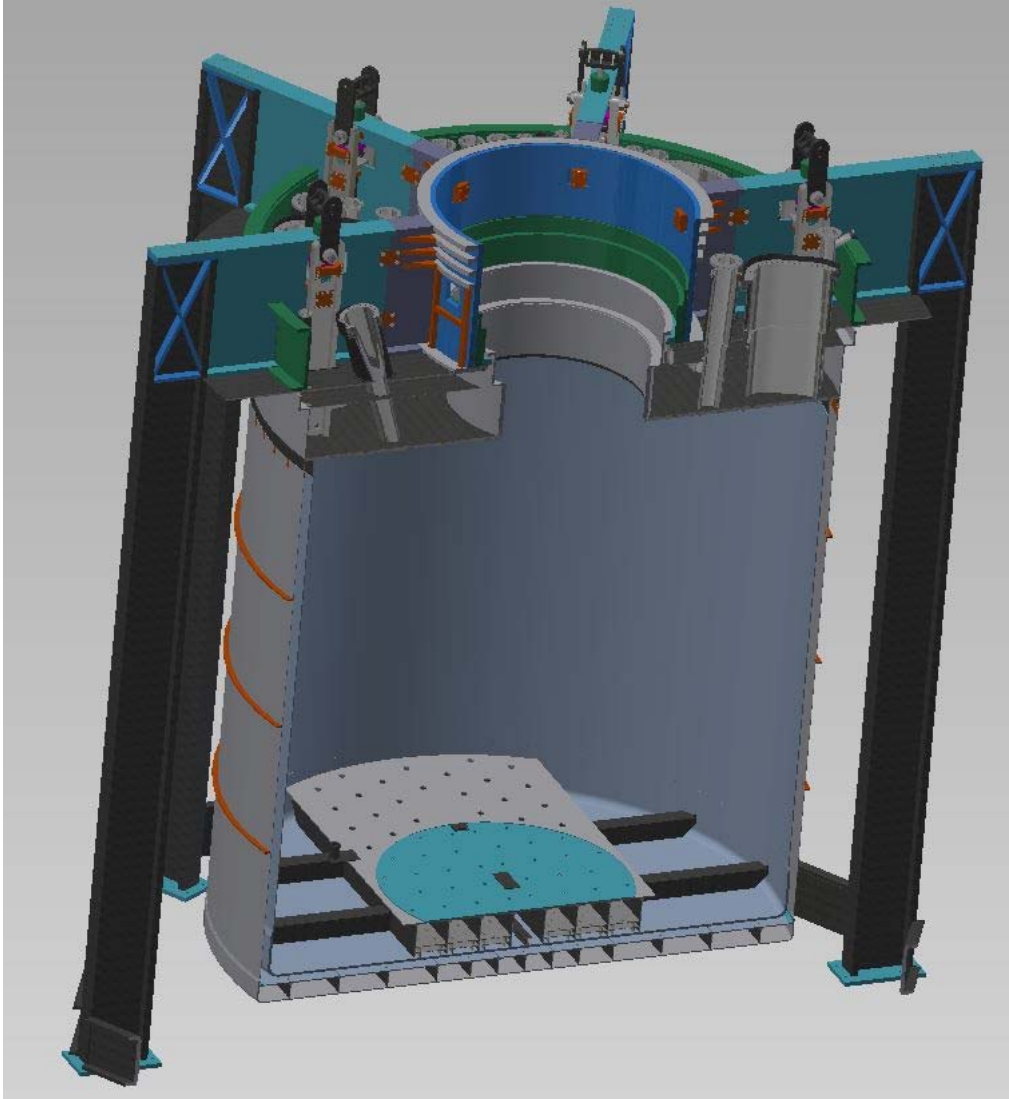


Figure 6: Cut away of EBR-II primary tank and support

Appendix A

File Sharing Via Google Drive

Idaho National Laboratory Mail - TREAT digitized drawing files

9/26/15, 4:49 PM



Rabiti, Cristian <cristian.rabiti@inl.gov>

TREAT digitized drawing files

4 messages

Griffith, George W <george.griffith@inl.gov> Fri, Sep 25, 2015 at 8:30 AM
To: Shawn R Jensen <shawn.jensen@inl.gov>
Cc: Lexie J Byrd <lexie.byrd@inl.gov>, Cristian Rabiti <cristian.rabiti@inl.gov>, Brad Couch <brad.couch@inl.gov>

Shawn:

Here, on drive because of the size, is a snapshot of where the TREAT digitization project for you to see..I've included the files in their structure. Inside the file folder is a top level structure that rolls up all the supporting drawings.

Let me know if there are questions.

Thanks
George

 coffin.zip

 reactor.zip

Figure 7: Sharing of the TREAT drawing with the Engineering team via google drive