



Sandia National Laboratories Visit to California Exercise Simulation Center (CESC)

April 28, 2015

CESC

Chief Mark A. Wells

Chief Ruben Grijalva

Shawn Daly

Larry Davis

Sacramento Homeland Security

Regional Office

Deanna Viscuso

Sandia National Laboratories

Richard Griffith

Sheryl Hingorani

Nathaniel Gleason

Dean Jones

Jina Lee

Nicholas Medina

Patrick Sullivan

Lynn Yang



*Exceptional
service
in the
national
interest*



Sandia National Laboratories is a multi-program laboratory managed and operated by Sandia Corporation, a wholly owned subsidiary of Lockheed Martin Corporation, for the U.S. Department of Energy's National Nuclear Security Administration under contract DE-AC04-94AL85000. SAND NO. 2011-XXXXP

Meeting Objectives

- Show Sandia management the CESC and SUMMIT deployment
- Discuss and formalize Sandia-CESC partnership

Take-away messages:

- ✓ SUMMIT brings value to the CESC
- ✓ We have a sustainment plan
- ✓ CESC and SNL partnership is valuable
- ✓ Our partnership should be expanded

Agenda

- 10:00-10:15 Introductions and agenda
- 10:15-10:30 CESC Tour, Edge Virtual Trainer demo
- 10:30-11:15 Overview of SUMMIT deployment and sustainment plan
- 11:15-11:30 Discuss Sandia-CESC MOU and future opportunities
- 11:30-11:45 Travel to Zinfandel site
- 11:45-12:15 Tour Zinfandel site and discuss SUMMIT-driven incident command + field exercises
- 12:15-1:30 Working lunch at CESC and Travel to Cal OES
- 1:30-2:30 Meeting at Cal OES



CESC Tour and Edge Virtual Trainer

Standard Unified Modeling and Mapping Integration Toolkit (SUMMIT)

SUMMIT is a modeling & simulation software environment that enables analysts, emergency planners, responders, and decision makers to seamlessly access integrated suites of modeling tools & data sources for planning, exercise, or operational response.

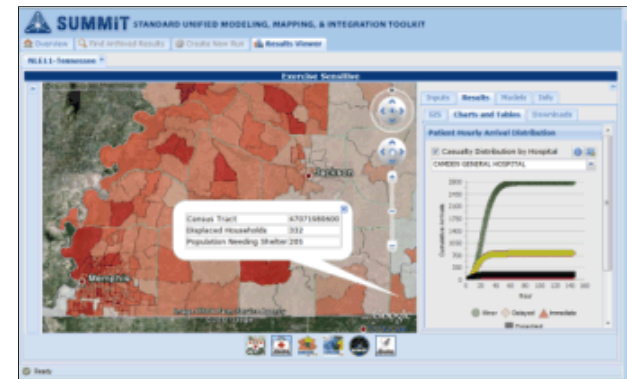
Enables analysis of emergency response scenarios.

Ties together existing modeling capabilities.

Makes modeling resources reusable.

Enhances exercise efficiency and planning robustness.

Is flexible and geo-agile.



SUMMIT Deployment at the CESC

Training Certifications (CICCS)

“Performance-based System”



Certification scenarios: Data on wildfire behavior, population impacts, affected infrastructure, economic disruption

Exercise scenarios and injects:
Data on catastrophic incidents and downstream impacts

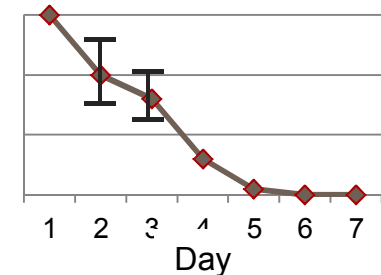
Incident Command Exercises



Suite of scenarios for robust testing of plans:
Requirements data

Plans Validation

Hospital Beds Needed

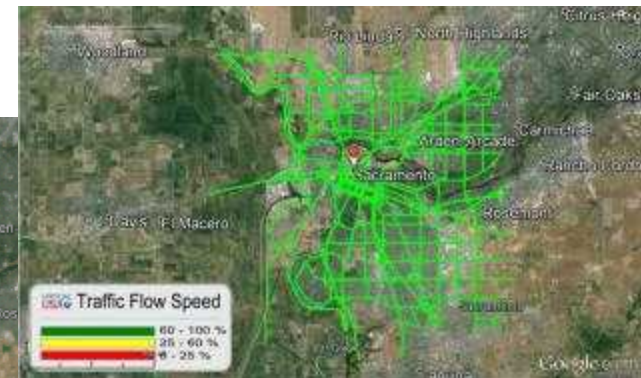
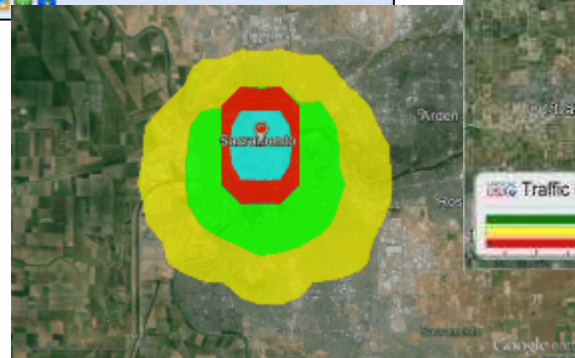
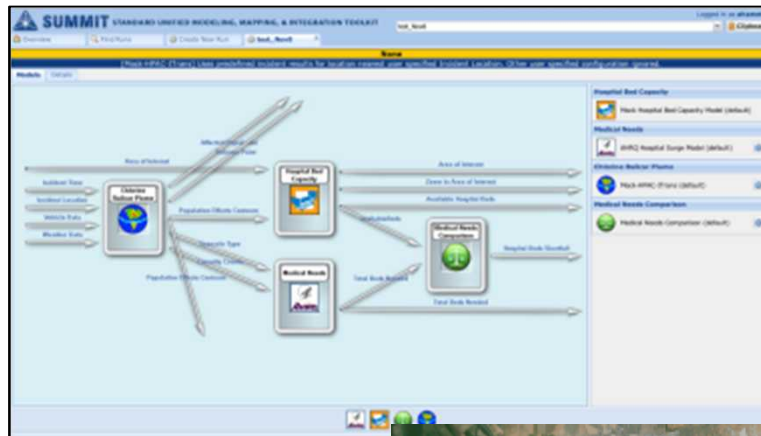


 **SUMMIT**
at the CESC

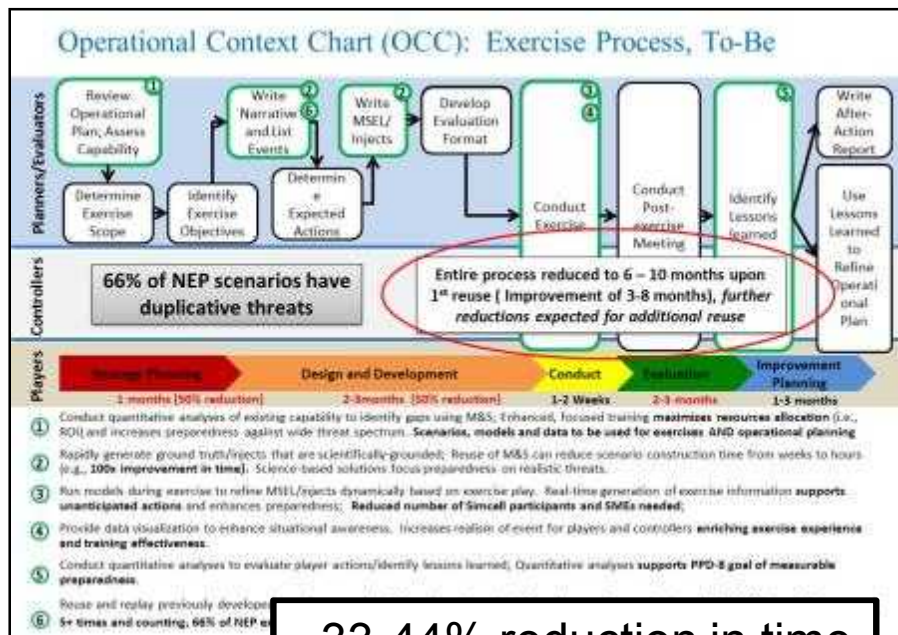
SUMMIT demo

➔ Decisions Matter scenario

- Wildfire certifications



Estimates on SUMMIT Return on Investment for Exercises, in Time and Money



~33-44% reduction in time

April 2014 CalFire IED/Flood Exercise at CESC

Of \$1M/exercise total, \$150K goes to Scenario creation, \$600K goes to Injects*

- SUMMIT compresses Scenario Creation, validation and GIS work by 80% = \$120K saved
- SUMMIT compresses Inject Creation and deconfliction by 10% (assuming that 10% of injects could come from SUMMIT) = \$60K saved

Total saved = \$180K or ~20% reduction in cost of exercise.

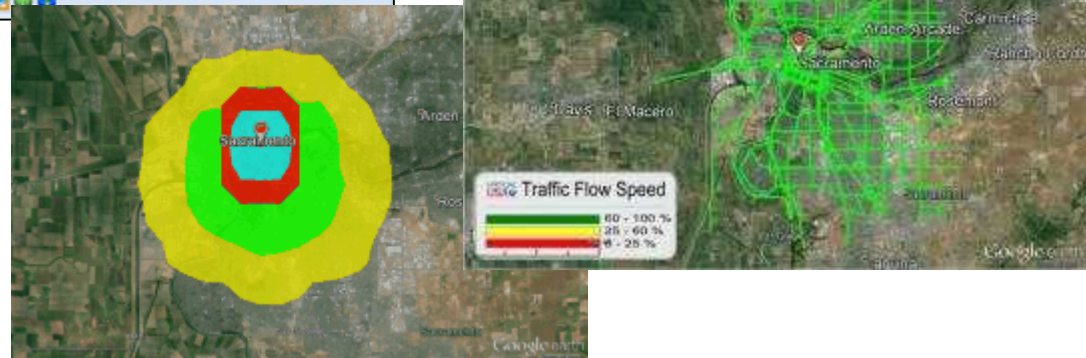
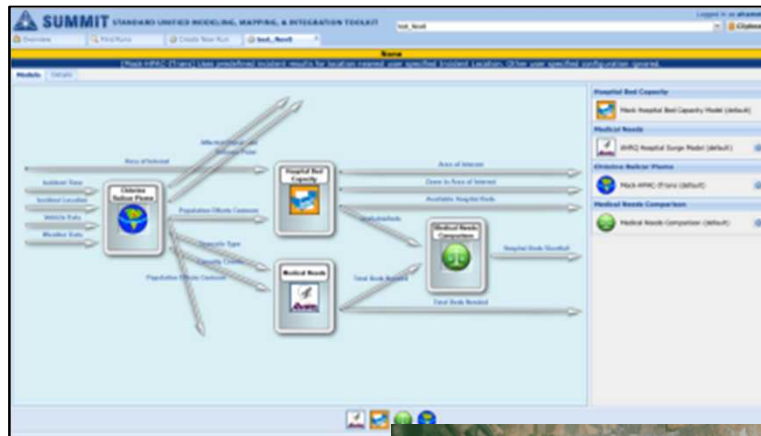
* Estimates provided by exercise planner

~20% reduction in cost

SUMMIT demo

- Decisions Matter scenario

➔ Wildfire certifications



SUMMIT Sustainment Plan

What is needed to sustain SUMMIT at the CESC

- A trained SUMMIT user
- SUMMIT server (commodity off-the-shelf desktop)
- IT support for software/model/data updates (1-2x per year?)

Business model for offering SUMMIT at the CESC

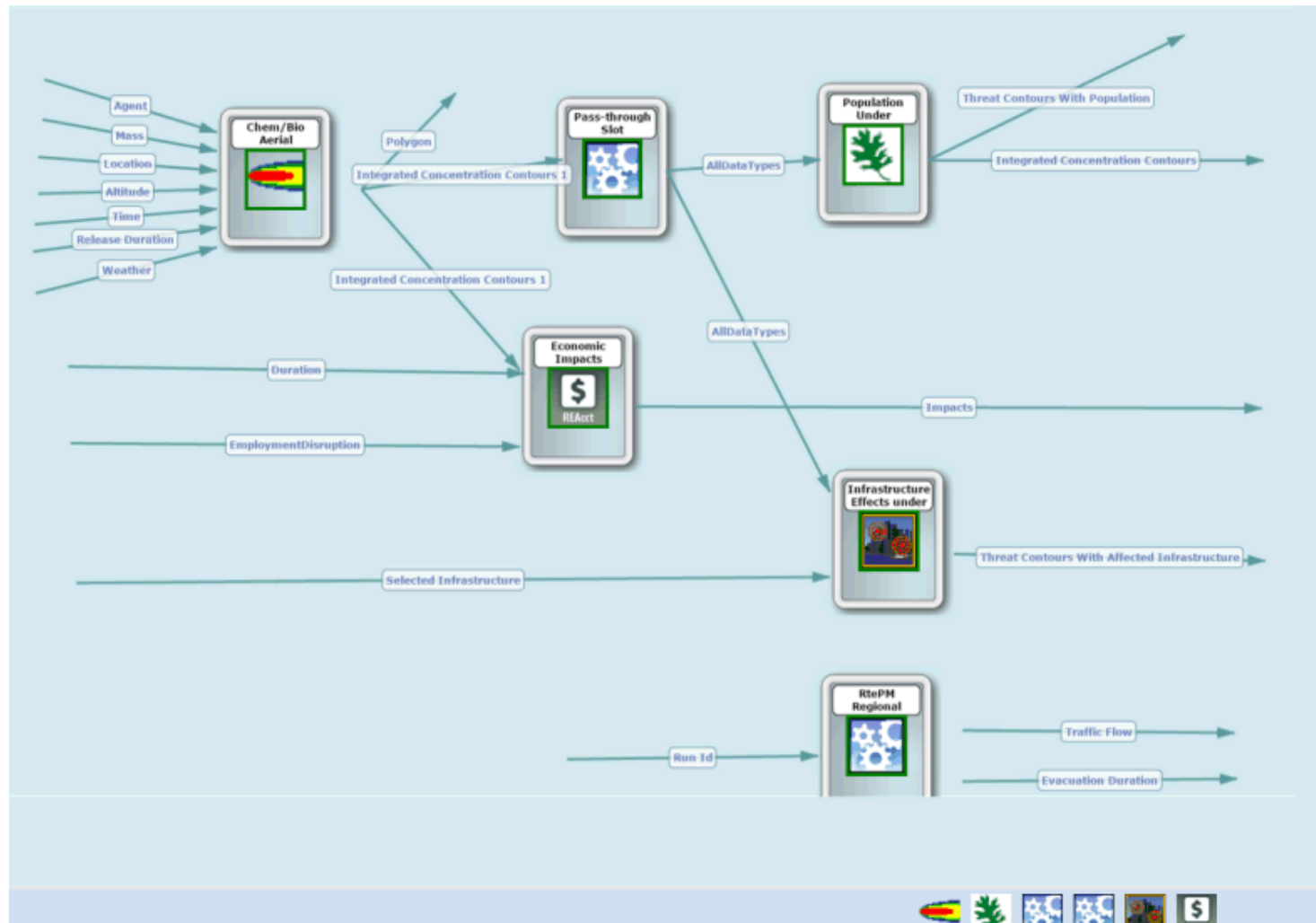
- Short-term (through 7/15):
 - DHS S&T deployment task (“Decisions Matter” exercise)
- Medium-term (FY16):
 - SHSGP “Template” project proposal
 - Search for other funds
- Long term (FY16 and beyond):
 - **CESC as an enterprise, fee schedule/pay-per-use**
 - Shared resources with Edge virtual trainer

Backup Screenshots

Decisions Matter SUMMIT Template:

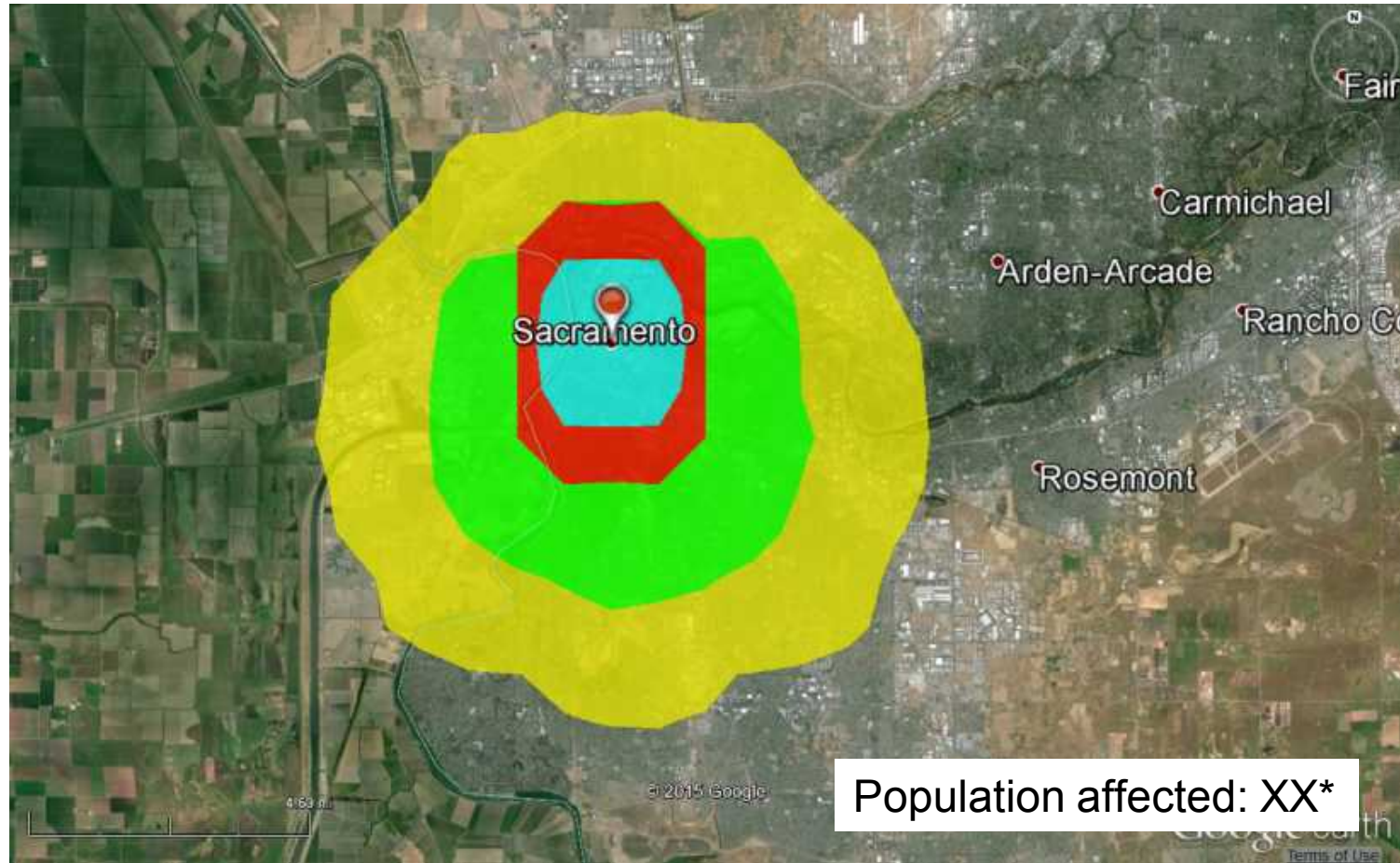
Chlorine Tanker Release with

Population, Infrastructure, Economic Effects, and Evacuation Modeling



Decisions Matter SUMMIT Results:

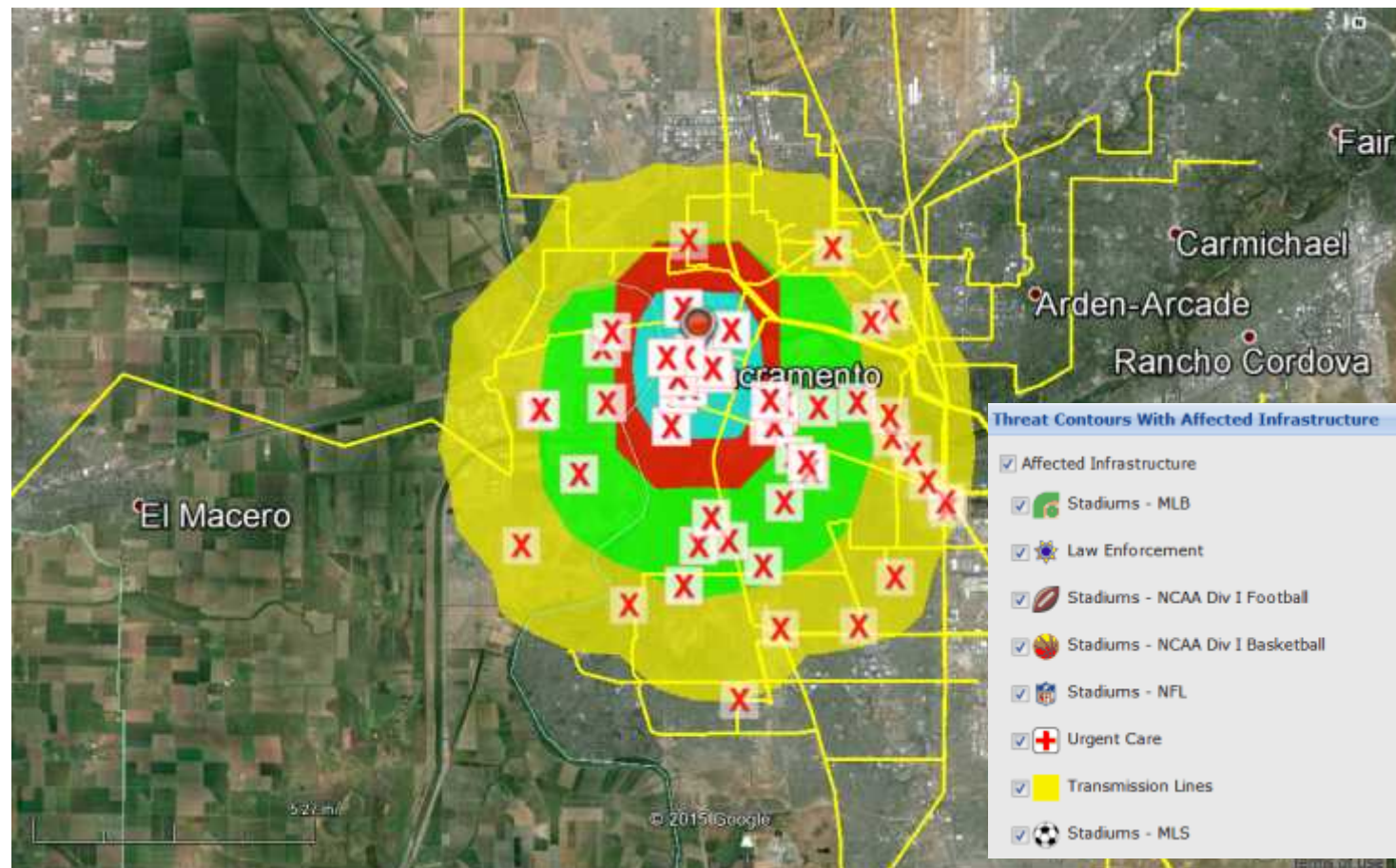
Chlorine Concentration Contours, and Affected Population*



*Concentration and population data removed due to sensitivity level of data

Decisions Matter SUMMIT Results:

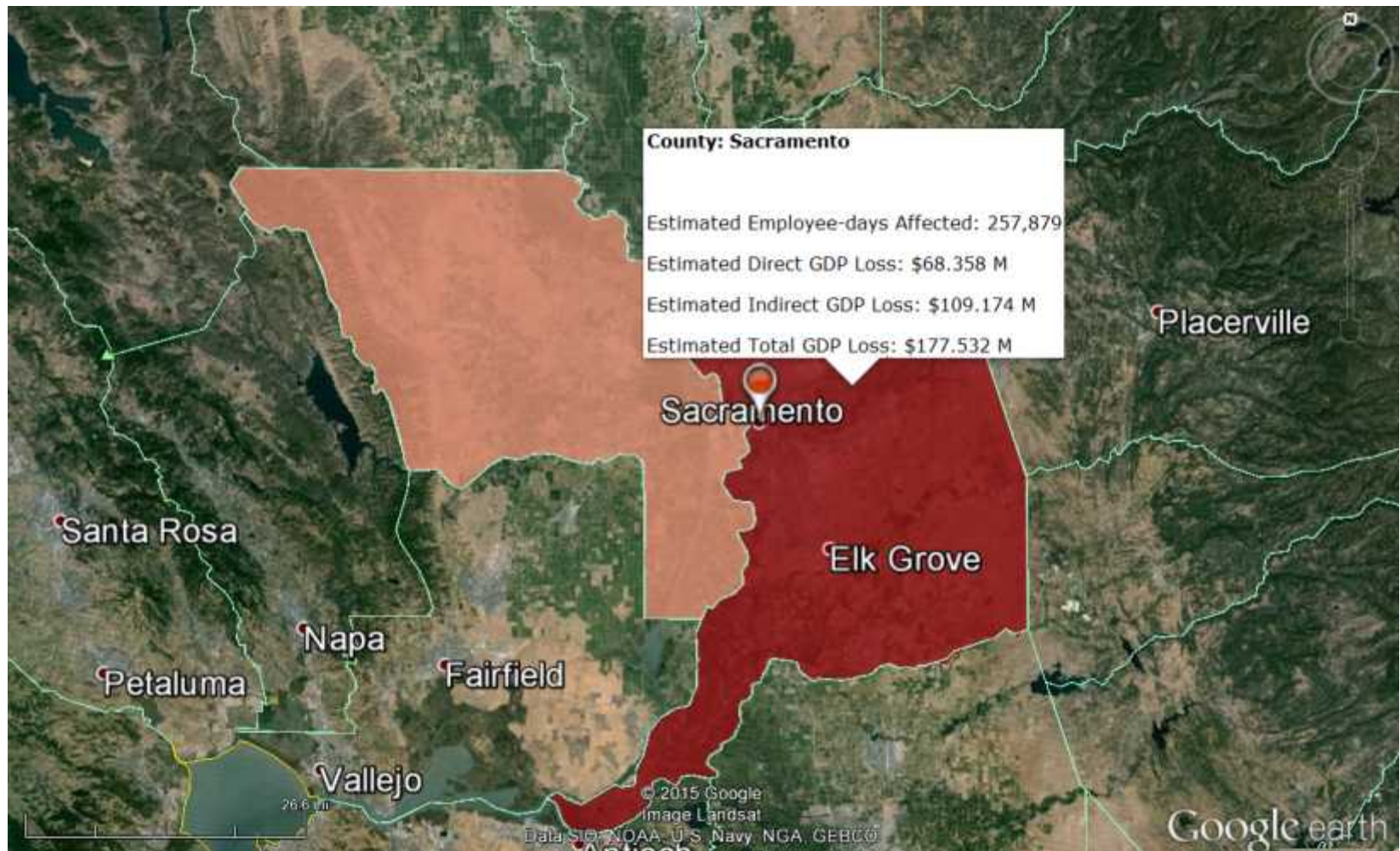
Affected Critical Infrastructure*



*Infrastructure de-identified due to sensitivity level of data

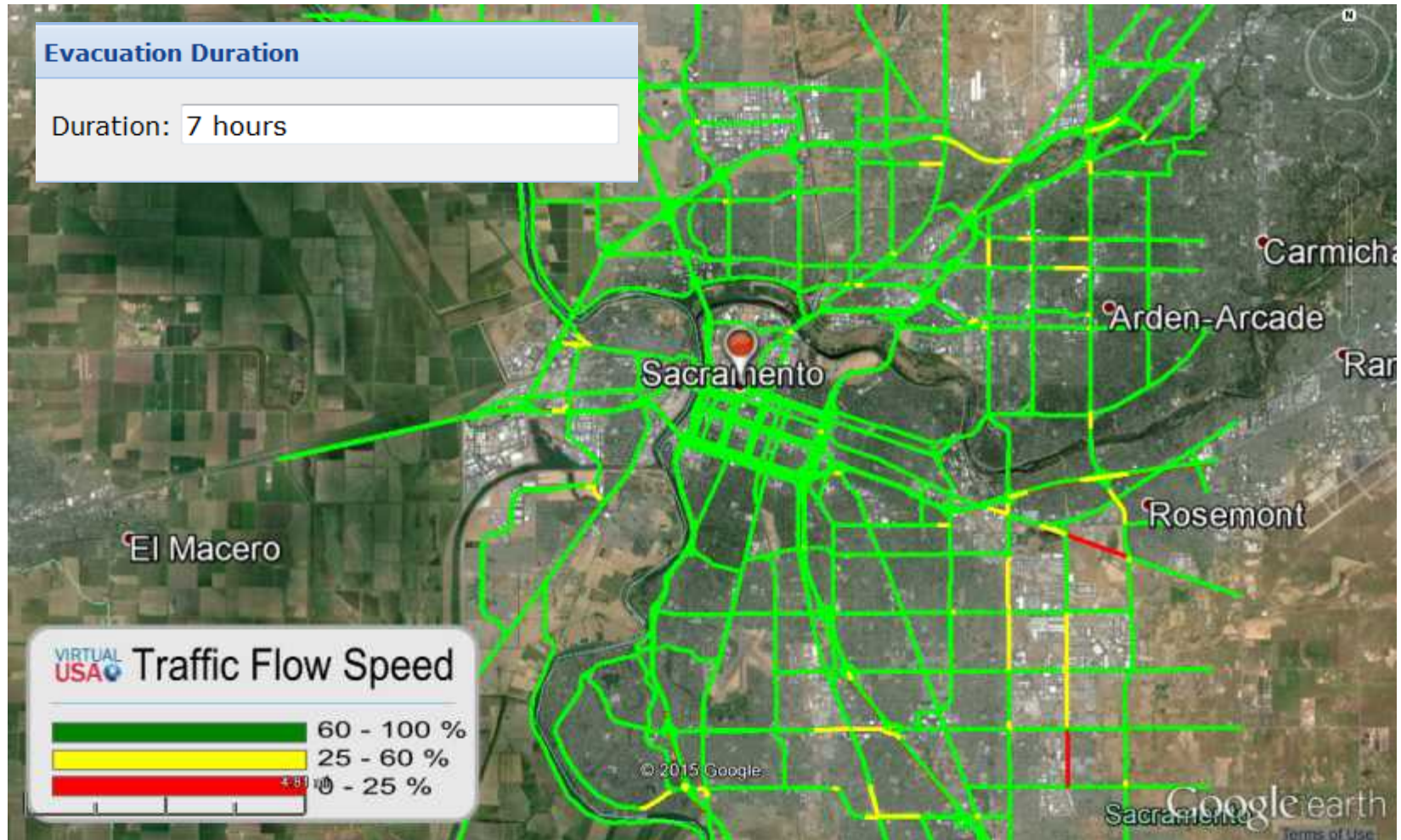
Decisions Matter SUMMIT Results:

Economic Impacts



Decisions Matter SUMMIT Results:

Consequences of an Evacuation Decision



Decisions Matter SUMMIT Results:

Consequences of a Different Evacuation Decision

