

LA-UR- 12-00827

Approved for public release;
distribution is unlimited.

Title: Influence of Sweeping Detonation-Wave Loading on Shock
Hardening and Damage Evolution during Spallation Loading
in Tantalum

Author(s): George T. (Rusty) Gray III (MST-8)
L. Hull (WX-3)
V. Livescu (MST-8)
J.R. Faulkner(WX-3)
M.E. Briggs(WX-4)
E.K. Cerreta (MST-8)

Intended for: DYMAT 2012 Conference
Freiburg, Germany
September 2-7, 2012



Los Alamos National Laboratory, an affirmative action/equal opportunity employer, is operated by the Los Alamos National Security, LLC for the National Nuclear Security Administration of the U.S. Department of Energy under contract DE-AC52-06NA25396. By acceptance of this article, the publisher recognizes that the U.S. Government retains a nonexclusive, royalty-free license to publish or reproduce the published form of this contribution, or to allow others to do so, for U.S. Government purposes. Los Alamos National Laboratory requests that the publisher identify this article as work performed under the auspices of the U.S. Department of Energy. Los Alamos National Laboratory strongly supports academic freedom and a researcher's right to publish; as an institution, however, the Laboratory does not endorse the viewpoint of a publication or guarantee its technical correctness.

Influence of sweeping detonation-wave loading on shock hardening and damage evolution during spallation loading in tantalum

George T. Gray III¹, L.M. Hull¹, V. Livescu¹, J.R. Faulkner¹, M.E. Briggs¹, and E.K. Cerreta¹

¹Los Alamos National Laboratory, Los Alamos, New Mexico, 87544, USA

Abstract. Widespread research over the past five decades has provided a wealth of experimental data and insight concerning the shock hardening, damage evolution, and the spallation response of materials subjected to square-topped shock-wave loading profiles. However, fewer quantitative studies have been conducted on the effect of direct, in-contact, high explosive (HE)-driven Taylor wave (unsupported shocks) loading profile shock loading on the shock hardening, damage evolution, or spallation response of materials. Systematic studies quantifying the effect of sweeping-detonation wave loading are yet sparser. In this study, the shock hardening and spallation response of Ta is shown to be critically dependent on the peak shock stress and the shock obliquity during sweeping-detonation-wave shock loading. Sweeping-wave loading is observed to: a) yield a lower spall strength than previously documented for 1-D supported-shock-wave loading, b) exhibit increased shock hardening as a function of increasing obliquity, and c) lead to an increased incidence of deformation twin formation with increasing shock obliquity.

1 Introduction

Over the past five decades numerous studies have provided a wealth of experimental data and insight concerning shock hardening and the spallation response of materials subjected to square-topped shock-wave loading profiles[1, 2, 3]. Fewer researchers have quantified the effect of direct, in-contact, high explosive (HE)-driven Taylor wave (or triangular-wave) loading profile shock loading on the shock hardening, damage evolution, or spallation response of materials[4, 5]. Direct in-contact high-explosive loading induces an impulse dubbed a "Taylor Wave". Direct explosive loading imparts a significantly different loading history than that achieved by a square-topped impulse in terms of both the pulse duration at a fixed peak pressure, and a different unloading strain rate from the peak Hugoniot state achieved[6]. Seminal studies by Rinehart[7], and Butcher *et al.*[6] detailed how the formation and thickness of the "scabbing under explosive loading" (*i.e.* spallation), depends directly on the shape of the stress wave imposed. Butcher *et al.*[6] demonstrated that "since spallation is studied by introducing a pulse and observing the effects of the tensile stresses within the material, knowledge of the stress history at the spall plane is necessary to the quantitative understanding of spall". Further, experiments by Butcher *et al.*[6] revealed "that the spallation stress is less for square pulses than for triangular pulses".

Later studies by Al'tshuler, Novikov, and Divnov [8] summarized direct explosively-driven spallation experiments stating that "the resistance of metal to fracture in the case of a strong blow or explosion is not a constant characteristic of its strength, but rather may vary over a wide range depending on the pressure gradient (or on strain rate) in the interacting rarefaction waves". Additional experiments by Drummond[9] and more recently Ogorodnikov *et al.*[10] has led to an increased emphasis on research in HE-driven spallation to oblique loading via sliding detonation waves.

Recent sweeping-detonation-wave shock-loading and spallation experiments on Cu have shown that based on variations in the specifics of the shock drive (pulse shape, peak stress, shock obliquity) and sample geometry, "spall strength" in High-purity Cu varies by over a factor of two and the details of the mechanisms of the damage evolution were seen to vary[2]. Divergent direct PETN explosive loading of Ta revealed that Ta as a function of position revealed that twin formation during shock loading in Ta was seen to be a strong function of shock obliquity, consistent with the effect of obliquity on the imposed stress tensor during shock loading that effectively varies the ratio of the spherical (hydrostatic) and deviatoric (shear) stress[3, 11].

2 Experimental Procedure

Targets for sweeping detonation-wave loading tests were

prepared from commercially pure, triple electron-beam melted and annealed tantalum plate, 10.2 mm in thickness obtained from Cabot Corporation. The chemical composition (in wt%) was analyzed to be carbon 10 ppm, oxygen <50 ppm, nitrogen <10 ppm, hydrogen <5 ppm, tungsten <25 ppm, niobium <25 ppm, titanium <5 ppm, iron <5 ppm, and the balance Ta. The plate was produced from an ingot, which was forged into a billet; this was then annealed, and subsequently cut prior to cross rolling. The plates were straight rolled in the final finishing passes. Cross rolling of the Ta plate resulted in divergence from the typical straight-rolled texture, from a partial to a nearly continuous γ fiber ($\langle 111 \rangle // ND$) along with the virtual extinction of the partial α fiber ($\langle 110 \rangle // RD$). The texture strength was moderate, with the $\langle 111 \rangle$ fiber component approximately eight times random. Acoustic properties of the tantalum studied were measured using 5 MHz quartz transducers with a Parametrics 500PR pulse receiver. The density (ρ_0) of the tantalum studied was measured to be $16.58 \pm 0.01 \text{ gcm}^{-3}$, longitudinal sound speed (c_L) $4.13 \pm 0.03 \text{ mm}\mu\text{s}^{-1}$ and shear sound speed (c_S) $2.04 \pm 0.03 \text{ mm}\mu\text{s}^{-1}$. The Poisson ratio (ν) was 0.339. The explosive assembly used to drive the sweeping wave into the tantalum samples is shown in Fig. 1. The samples were 10.2mm thick x 50.8 mm wide x 88.9 mm long. Equal thickness rails made of tantalum that are 25.4mm in width by 10.2mm in thickness surrounded the sample to provide relief from

the transverse and end (longitudinal) rarefactions along the edges that tend to cause the edges to lag.

A schematic of the experimental set-up is given in figure 1. The explosive drive was provided by Detasheet initiated with a line wave generator. The line wave generator is made by extruding XTX explosive into tracks that form equal lateral triangles. The line wave generators have a small arrival time ripple on the output wave that corresponds to the spacing between the tracks, and the average output simultaneity is $\pm 10 \text{ ns}$. Three explosive loading configurations were used to approach conditions of incipient spall. All of the experiments used 8 mm of Detasheet explosive, with varying amounts of polyurethane foam between the explosive and the tantalum. The plate thickness was not varied, nor the lateral dimensions of the assembly. In the first configuration an 8 mm thick piece of Detasheet was separated from the tantalum by a 6.35mm layer of 0.04 g/cc polyurethane foam. The second configuration used 8 mm of Detasheet that was separated from the tantalum by a 3.175mm layer of 0.25 g/cc polyurethane foam. In the third shot, the 8mm of Detasheet was placed in direct contact with the tantalum assembly. The purpose of the foam is to allow the explosive products to expand before interacting with the sample, thereby producing a reduced amplitude oblique shock in the sample.

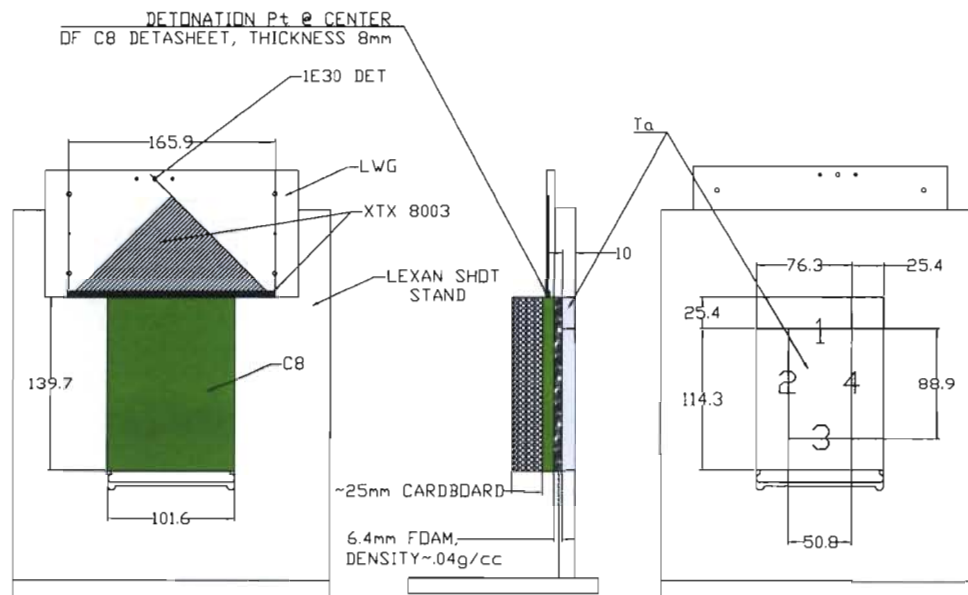


Fig. 1. Three schematic views of sweeping detonation-wave shot set-up.

The primary diagnostics for these experiments was sample recovery with post-mortem metallurgical analysis and Photon Doppler Velocimetry (PDV). The PDV was used to capture the velocity history of the sample at four points in an approximately square array. The probes have a 20.3 cm working distance and each probe interrogates a

spot that is about $250 \mu\text{m}$ in diameter. The array is roughly aligned so that two pairs of points are approximately parallel to the detonation direction and the two pairs straddle the center of the sample. The probe locations were placed at 50 and 100mm from the top surface of the Ta sample. The alignment is not expected to be exact with regards to the probes interrogation

points, but adequately perpendicular to the tantalum surface to capture good return signals. The objective of the recovery was to identify and characterize the micro-mechanisms of damage evolution and observe the evolution in damage evolution during spall driven by a sweeping wave; i.e., as a function of increasing shock obliquity. The objective of the velocimetry was to characterize the free surface velocity wave profiles and their differences as a function of variations in explosive drive.

The Ta specimens following sweeping-wave loading were cross-sectioned and prepared for optical metallography and electron backscatter diffraction (EBSD)[12]. Automated EBSD scans were performed at 20 kV in an FEI XL30 FEG-SEM equipped with TSL data acquisition hardware and software. The local misorientations as a function of location surrounding areas of interest were orientation-mapped with a step size of $0.15\ \mu\text{m}$ in a hexagonal grid.

3 Results and Discussion

3.1 Post-Mortem Metallurgical Analysis

The damage evolution in energetic-driven oblique shock loading of Ta was seen to vary as a function of the imposed explosive loading intensity. Figure 2 shows macroscopic optical micrographs of the three sweeping-wave loaded samples as a function of the explosive loading set-up. Optical microscopy on Tantalum specimen *I* indicated no defined spall plane and very incipient void damage evolved in the sample. Isolated voids up to $10\ \mu\text{m}$ diameter were scattered throughout the microstructure as seen in figure 3.

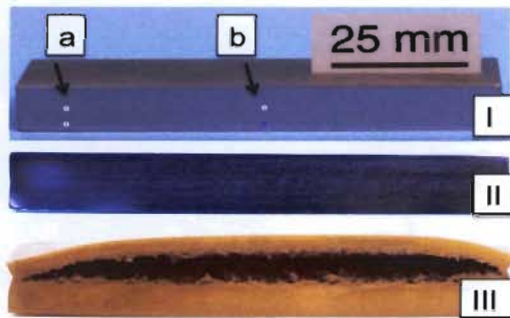


Fig. 2. Macroscopic cross-sectional view of the three sweeping detonation-wave samples: I) 8mm of Detasheet with a 6.35 mm foam interlayer revealing no observable evolved damage, II) 8mm of Detasheet with 3.175mm of foam interlayer showing developing incipient spall including partial linkage and cracking between voids, and III) significant incipient spall including a single spall scab and extensive ductile tearing. The direction of sweeping wave is from left to right in each sample.

The majority of these voids appear to lie on or near grain boundaries. In response to the diverging detonation wave, Ta specimen *I* displayed a higher density of twins near the bottom surface away from the surface adjacent to the explosive; i.e., where the loading obliquity was maximum. Electron Backscattered Diffraction was used

to interrogate specific regions for detection of obliquity effects as a function of distance from the detonation point on Ta specimen *I*. Optical metallography of Specimen *I* following etching and viewed using polarized illumination also revealed extensive dislocation pits as seen in figure 4. Preferential chemical attack due to small regions of stress with a subtle different electrode potential resolves these pits[13]. The propensity of dislocation pits to lie at or near grain boundaries is consistent with the need to plastically accommodate the compatibility stresses between polycrystals.

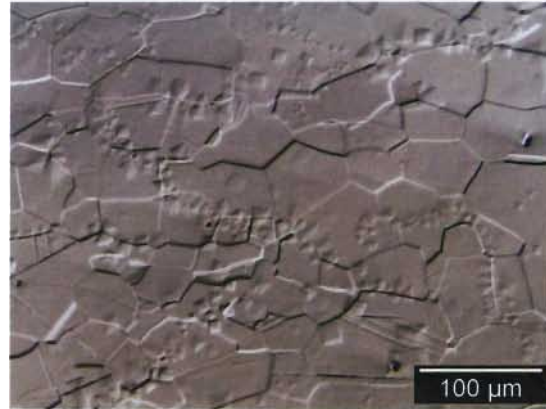


Fig. 3. Isolated voids and dislocation pits in specimen *I*.

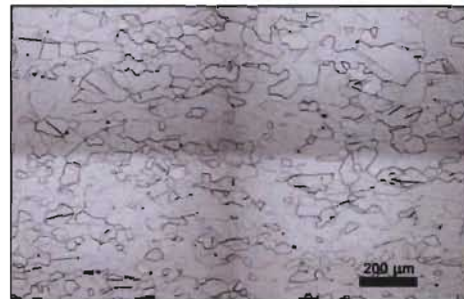


Fig. 4. Optical metallography of Ta Specimen *I* using polarized illumination revealing dislocation etch pits preferentially located along grain boundaries.

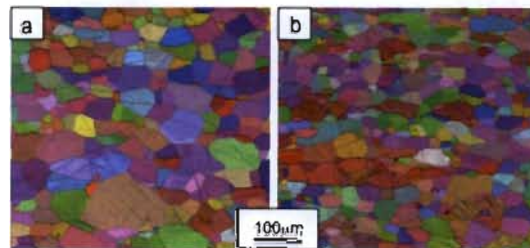


Fig. 5. EBSD scans of regions 'a' and 'b' from Ta Specimen *I* showing minimal microstructural damage evolution due to the sweeping-wave loading with 8mm Detasheet plus 6.35mm foam.

For EBSD analysis, we selected two regions approximately 50mm apart along the x direction; the two

locations are denoted as positions 'a' and 'b' in figure 2. Two sets of scans with a step size of 0.7 microns were performed. The EBSD data indicated no microstructural differences between regions 'a' and 'b' as seen in figure 5. EBSD data analysis for specimen *I* also revealed essentially no microstructural disturbances around voids and minimal deformation affected material aside from the presence of twins. The usual defect indicators sought were grain orientation gradients as witnesses of anisotropic deformation, enhanced localized misorientations as potential damage initiation sites, and deformation twins as suggesting a change in the balance of hydrostatic and deviatoric stresses as well as potential damage nucleation sites were all examined. However, both the crystal orientation maps and the kernel average misorientation maps were found to be similar for the two regions interrogated in specimen *I*.

As minimal incipient spallation damage was found in Specimen *I*, the amount of the foam interlayer was reduced in the second experiment to 3.175mm while keeping the explosive thickness unchanged. Specimen *II* was found to exhibit a more advanced damage state and a vaguely defined spall plane as seen in figure 2. Voids were up to 200 μ m in diameter. While larger voids in specimen *II* appear round, incipient damage areas indicate that they are the result of growth and coalescence of multiple small voids. In response to the diverging detonation wave, both specimens *I* and *II* displayed a higher density of twins near the bottom edge compared to the top, and closer to the right bottom corner away from the detonation edge similar to our previous studies on Cu and Ta[2, 3]. Figure 6 shows the increased density of deformation twins formed in specimen *II* as a function of increased shock obliquity coincidentally while the peak 'pressure' or hydrostatic component of the experiment is lower[11].

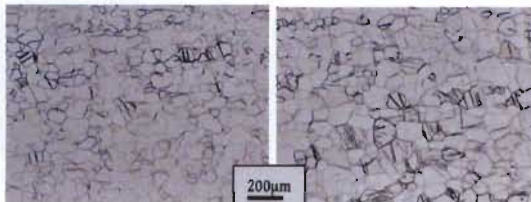


Fig. 6. Increasing propensity of deformation twin formation in Ta specimen *II* as a function of increasing shock obliquity (shock obliquity increasing from left to right).

Incipient regions of strain localization as shown in figure 7 for specimen *II* indicate large areas of damage-affected material. Using the kernel-average misorientation (KAM map), one can identify multiple "seeds" for such localization. Due to their proximity, these seeds begin to interact with each other creating large deformation-affected zones offering multiple void nucleation sites. Such highly disturbed regions, with intragranular orientation gradients of up to 45°, lead to multiple voids nucleation and grow simultaneously.

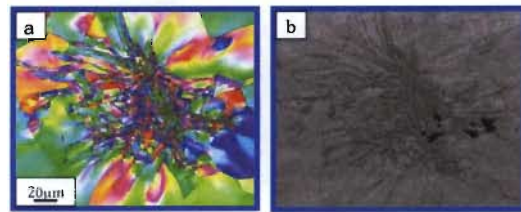


Fig. 7. Incipient damage region in specimen *II* showing damaged region in a) crystal orientation and b) kernel average misorientation maps.

The influence of shock obliquity on shock hardening in specimen *II* was probed by measuring the diamond-pyramid hardness of the Ta sample 1mm below the loading surface as a function of run distance along the sample length. In figure 8 the hardness is seen to increase as a function of run distance. Increasing hardness as a function of run distance subjected to sweeping-detonation-wave loading is thought to reflect a higher dislocation density consistent with increasing shear stresses with obliquity. Increasing shear stresses as a function of obliquity while the "hydrostatic pressure" portion of the imposed stress tensor decreases is the same trend as previous shown in Ta twinning studies of sweeping-wave loading and supported by modeling[11].

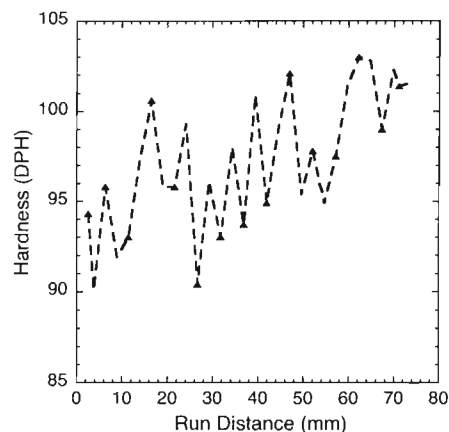


Fig. 8. Hardness measurements of specimen *II* as a function of detonation run distance along the sample reflecting the affect shock obliquity on shock hardening.

Removing the interlayer of foam in specimen *III* was seen to result in a single opened scab layer as well as a gradient of additional voids, void coalescence, shear localization, and cracking damage as a function of position from initiation of the sweeping wave. Figure 9 reveals a high density of fine deformation twins and large misorientations present below the opened scab fracture region after the sweeping wave was well established; i.e., approximately 2/3 down the length of the sample. The high volume fraction of grains in which twins were activated is similar to previous observations of the influence of shock obliquity on the imposed local shear stresses in the Ta as previously documented[11].

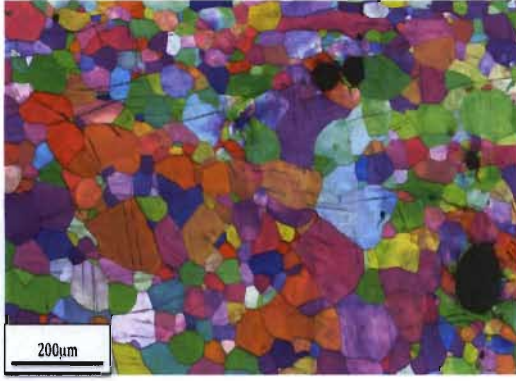


Fig. 9. Incipient damage in specimen *III* showing damage evolution below the main spall scab opening.

3.1 Velocimetry

The PDV data for the three Ta sweeping-detonation-wave spallation experiments is presented in figure 10. The wave profiles for the three experiments are seen to vary as a function of the foam thickness for a fixed 8mm of Detasheet of explosive. The effect of the removal of the foam in specimen *III* compared to specimens *I* and *II* is evident in the increase of the jump-off velocity. As a result, the velocity achieved by each plate should be nominally the same because the foam thickness variation is small. The in-contact experiment, specimen *III*, shows a much higher "ultimate" velocity. This is because the plate spalled in this experiment. It should be noted that the velocity of the Hugoniot Elastic Limit (HEL) did not vary appreciably between the three experiments, but the character of the pull back due to yielding appears to be different. Data on the induced transverse velocities developed in Specimen *I* experiment has been discussed previously [14]. Similar data exists for Specimens *I* and *II* and is under analysis.

After the spall event, the velocimeter is measuring the velocity of the spall scab on the front surface rather than the entire sample. Conversely, in Specimens *I* and *II* the plate remained intact and the velocimeter measured the lower ultimate velocity. As a beginning to the analysis of the data, the compressive stress of the incident shock, the tensile stress (pressure) achieved in the first unloading pulse, the strain rate of the unloading pulse, and the thickness implied by the duration of the period of the first ring, may be extracted from one of the probes arranged normal to the original surface. The formulas used are :

$$P = \rho_0 u_s u_p$$

for the incident pressure,

$$\sigma^* = \frac{1}{2} \rho_0 c_b \Delta u_{fs} \text{ for the spall strength,}$$

$$\dot{\epsilon} = -\dot{u}_{fs} / (2c_b) \text{ for the strain rate just before spall occurs, and}$$

$h = \frac{\tau}{2} c_l$ for the implied thickness of the sample thickness undergoing ringing. The equation of state used is $u_s = 3.402 + 1.22u_p$ with $u_p = u_{fs}/2$, $\rho_0 = 16.65 \text{ g/cm}^3$, and $c_b = 3.498 \text{ mm}/\mu\text{s}$. The results are presented in Table I.

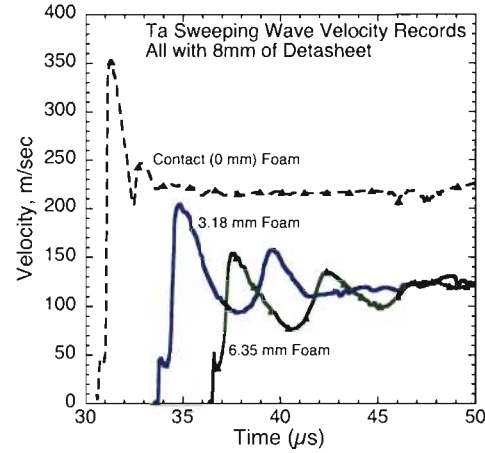


Figure 10. PDV wave profiles (particle velocity versus time plot) for the three sweeping-wave-spallation experiments.

Table I. Sweeping-Wave Spall shot data; (*Specimen *III* spalled)

Sample	Foam (mm)	Incident Shock, GPa	Tensile Spall Stress, GPa*	Strain Rate, s ⁻¹	Ringing (mm)
I	6.35	4.5	2.2	4100	9.6
II	3.18	6.0	3.2	6100	7.7
III	0	10.6	4.4	24,000	2.5

Analysis of the recovered sample indicates that Specimen *III* drastically spalled, and the implied spall scab thickness of 2.5 mm is consistent with the post-shot observations. Analysis of the recovered sample in Specimen *I* showed very little microscopic damage and was nominally intact. The implied thickness of the material undergoing ringing of 9.6 mm is just slightly less than the original sample thickness of 10.2 mm, and is also consistent with the post-shot and metallographic observations. Analysis of the recovered sample in Specimen *II* revealed some damage, but is also nominally intact. However, the implied thickness of the material undergoing ringing was 7.7 mm, which is significantly less than the original sample thickness. The first period of the ringing of the velocity in Specimen *II* appears to have been interrupted early, and this interruption is responsible for the calculated intermediate thickness value. This disruption occurs before edge rarefactions should arrive, and is therefore likely associated with waves originating from damaged regions within the material, possibly from locations offset from the probe location. This analysis is consistent with the Optical

observation of a partially-formed spall plane and void coalescence in specimen **II**.

Finally, the experiment that showed pronounced spall, specimen **III**, developed a tensile stress (spall strength of ~4.4 GPa) considerably below that quantified in the literature [15, 16, 17, 18, 19]. Previous 1D loading experiments have documented spall strengths of 5.2 GPa for a 6 GPa shock amplitude, a 7.3 GPa spall strength for a peak shock stress of 9.5 GPa [18, 19], a spall strength of 6.2 GPa after shock compression to 19 GPa [20], and a spall strength of 8.1 GPa Under quasi-isentropic loading to 60 GPa [17]. The lower apparent spall strength observed during sweeping-wave loading is postulated to reflect a change in the damage evolution in Ta from essentially pure void nucleation and growth to a higher contribution of shear-damage processes consistent with the increased imposed shear stresses commensurate with the increased shear stresses, shock hardening, and increased twin formation propensity as a function of shock obliquity [11]. Further study is required the physical processes responsible for this decrease in spall strength.

4 Summary

The spallation response of Ta is demonstrated to be critically dependent on the amplitude of sweeping-shock-wave loading. Sweeping-wave loading is observed to: a) yield a lower spall strength than previously documented for 1-D supported-shock-wave loading, b) exhibit increased shock hardening as a function of increasing obliquity, and c) lead to increased incidence of deformation twin formation with shock obliquity. Simplistic models of spallation, such as P_{min} based on 1-D square-top shock data lack the physics to capture the influence of kinetics on damage evolution such as that operative during sweeping detonation loading. Quantification of the effects of shock obliquity on defect generation and damage evolution in shock loaded materials is critical to the development of physically-based models of the shock response of condensed matter. Predictive modeling of the kinetics of the damage evolution in materials subjected to sweeping waves will require 2 and 3-D models where the full tensor components of the loading is described.

Acknowledgements

Los Alamos National Laboratory is operated by Los Alamos National Security, LLC, for the National Nuclear Security Administration of the U.S. Department of Energy under contract DE-AC52-06NA25396. This work was partially sponsored by the Joint DoD/DOE Munitions Technology Development Program.

References

1. G. T. Gray III, N. K. Bourne, B. L. Henrie: J. Appl. Phys. **101**, 093507 (2007)

2. G. T. Gray III, L. M. Hull, J. R. Faulkner, M. E. Briggs, E. K. Cerreta, F. L. Addessio, N. K. Bourne, *Shock Compression of Condensed Matter-2009*(American Institute of Physics Press, 2009)
3. G. T. Gray III, V. Livescu, E. K. Cerreta: Matls. Sci. Forum **654-656**, 2297 (2010)
4. J. N. Johnson: J. Appl. Phys. **52**, 2812 (1981)
5. G. T. Gray III, N. K. Bourne, B. L. Henrie, J. C. F. Millett: J. Phys. IV France **110**, 773 (2003)
6. B. M. Butcher, L. M. Barker, D. E. Munson, C. D. Lundergan: AIAA Journal **2**, 977 (1964)
7. J. S. Rinehart: J. Appl. Phys. **23**, 1229 (1952)
8. L. V. Altshuler, S. A. Novikov, I. I. Divnov: Sov. Phys. Dokl. **11**, 79 (1966)
9. W. E. Drummond: J. Appl. Phys. **29**, 167 (1958)
10. V. A. Ogorodnikov, E. S. Tyunkin, A. A. Khokhlov, V. A. Grigorev, V. V. Mishukov: Strength Mater. **21**, 1207 (1989)
11. G. T. Gray III, V. Livescu, E. K. Cerreta, T. A. Mason, P. J. Maudlin, J. A. Bingert, *DYMAT 2009: 9th International Conference on the Mechanical and Physical Behaviour of Materials Under Dynamic Loading*(EDP Sciences, 2009)
12. B. L. Adams, S. I. Wright, K. Kunze: Metallurgical Transactions A **24A**, 819 (1993)
13. R. W. K. Honeycombe. *The Plastic Deformation of Metals*. Victoria, Australia: Edward Arnold Ltd., 1984
14. L. M. Hull, M. E. Briggs, J. R. Faulkner, *Shock Compression of Condensed Matter-2011*(in press., 2011)
15. G. T. Gray III, In: *High Pressure Science and Technology 1993*, edited by Schmidt SC, Shaner JW, Samara GA, Ross M, American Institute of Physics, New York(1994), p.1103.
16. J. N. Johnson, R. S. Hixson, D. L. Tonks, A. K. Zurek, In: *Shock Compression of Condensed Matter 1995*, edited by Schmidt SC, Tao WC, American Institute of Physics, Woodbury, New York(1996), p.523.
17. L. C. Chhabildas, J. R. Asay, In: *Shock-Wave and High-Strain-Rate Phenomena in Materials*, edited by Meyers MA, Murr LE, Staudhammer KP, Marcel-Dekker, New York(1992), p.947.
18. G. T. Gray III, A. D. Rollett, In: *High Strain Rate Behavior of Refractory Metals and Alloys*, edited by Asfahani R, Chen E, Crowson A, The Minerals, Metals and Materials Society, Warrendale, Pennsylvania(1992), p.303.
19. A. K. Zurek, W. R. Thissell, J. N. Johnson, D. L. Tonks, R. Hixson: J. Mater. Process. Technol. **60**, 261 (1996)
20. L. C. Chhabildas, L. M. Barker, J. R. Asay, T. G. Trucano, In: *Shock Compression of Condensed Matter - 1989*, edited by Schmidt SC, Johnson JN, Davidson LW, Elsevier, Amsterdam(1990), p.429.