

# A semantic disambiguation algorithm



Sandia  
National  
Laboratories

clots 0.1.3397.26056 Copyright © Sandia National Laboratories 2009

## Connect to data

- ☒ junkyard  
☐ intersection

## Semantics

Car length between

14.5 and 18 feet

Car width between

5.5 and 7 feet

Car angle

- ☒ fixed at 0  
☐ multiples of 0

(degrees CCW from east)

## Select

- ☐ clear  
☐ incident to point  
☒ greedy to resolve 11  
☐ greedy unresolved

less greed more greed

## Display

- ☒ clots  
☐ blobs  
☐ all blobs  
☐ conflict pairs (graph)

Orthophoto

OFF ☐ ON

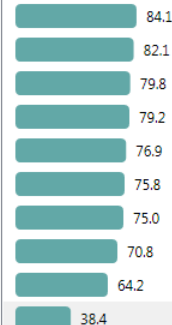
## Export to

MatrixMarket

CSV files

clear highlighted

SAND2009-2488C



Carl Diegert  
Sandia National  
Laboratories  
April, 2009



Segmentation has 710 blobs.  
Found 217 clots with 2702 pairwise conflicts.

Sandia is a multiprogram laboratory operated by Sandia Corporation, a Lockheed Martin Company, for the United States Department of Energy's National Nuclear Security Administration under contract DE-AC04-94AL85000.

### Connect to data

- ☒ junkyard  
☐ intersection

### Semantics

Car length between

and  feet

Car width between

and  feet

Car angle

☒ fixed at

☐ multiples of

(degrees CCW from east)

### Select

- ☐ clear  
☐ incident to point  
☒ greedy to resolve 11  
☐ greedy unresolved

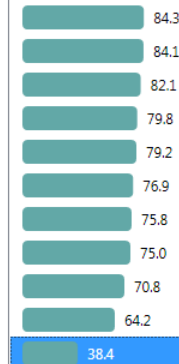
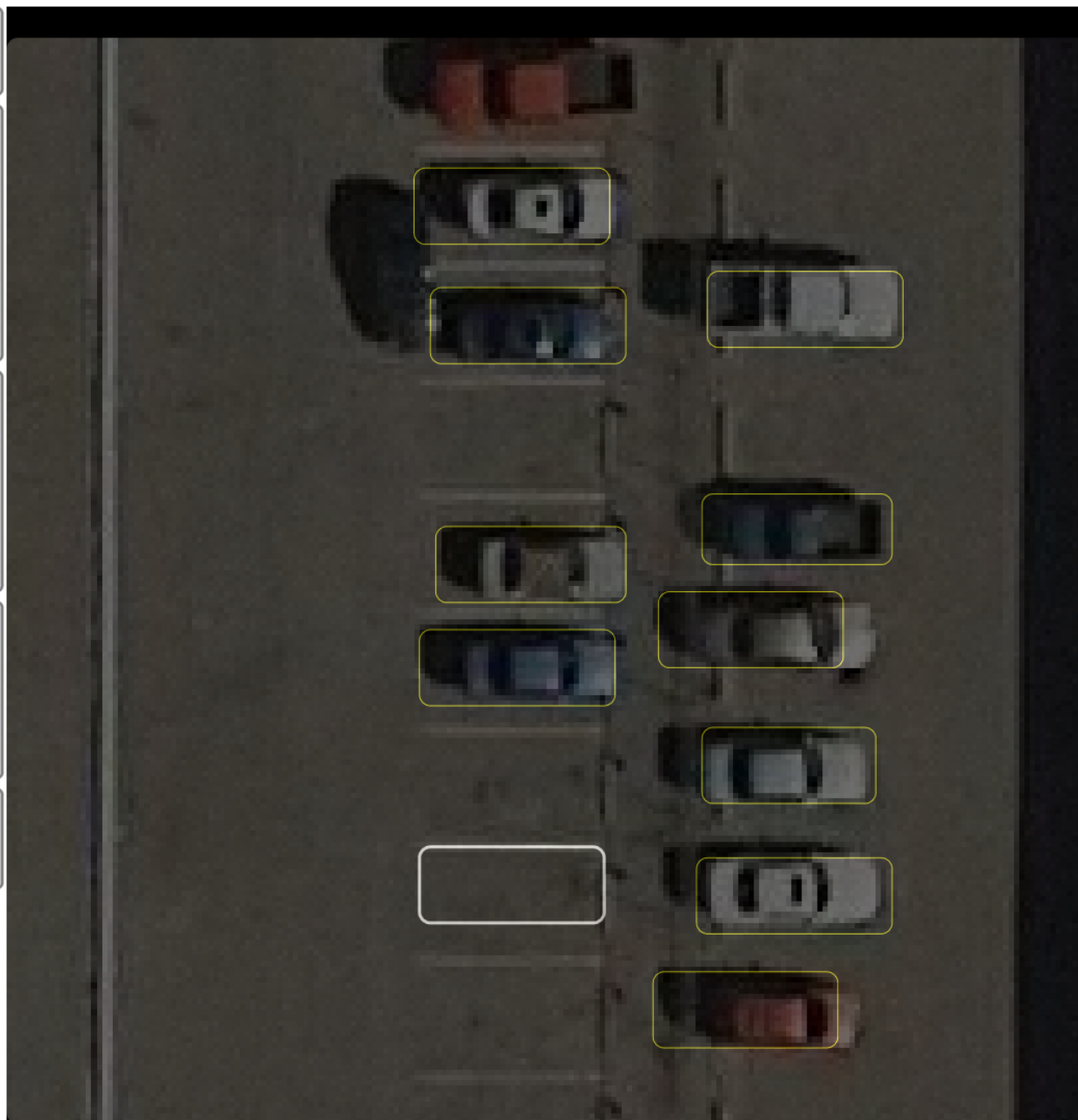
### Display

- ☒ clots  
☐ blobs  
☐ all blobs  
☐ conflict pairs (graph)

Orthophoto

OFF ☐ ON

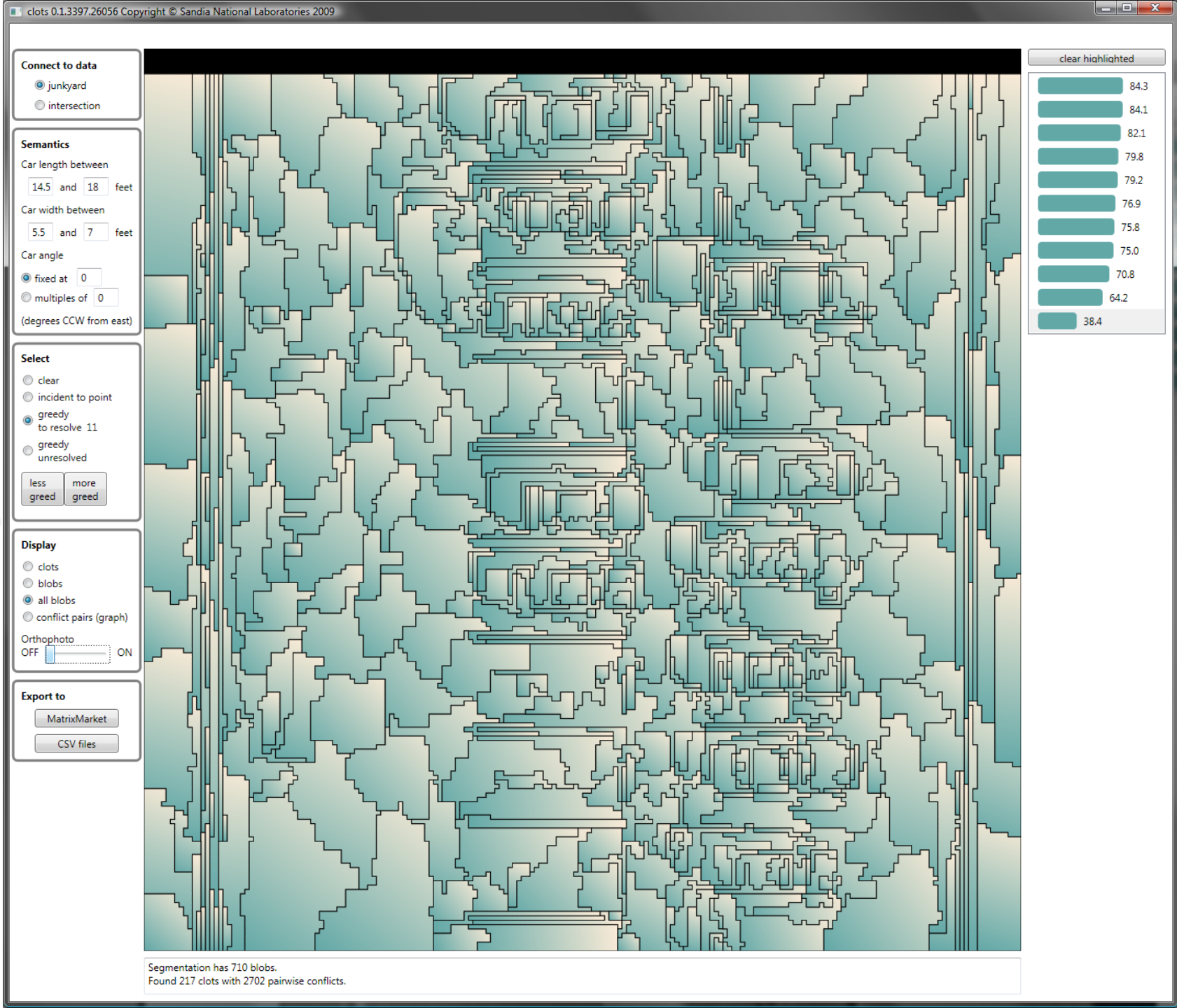
### Export to



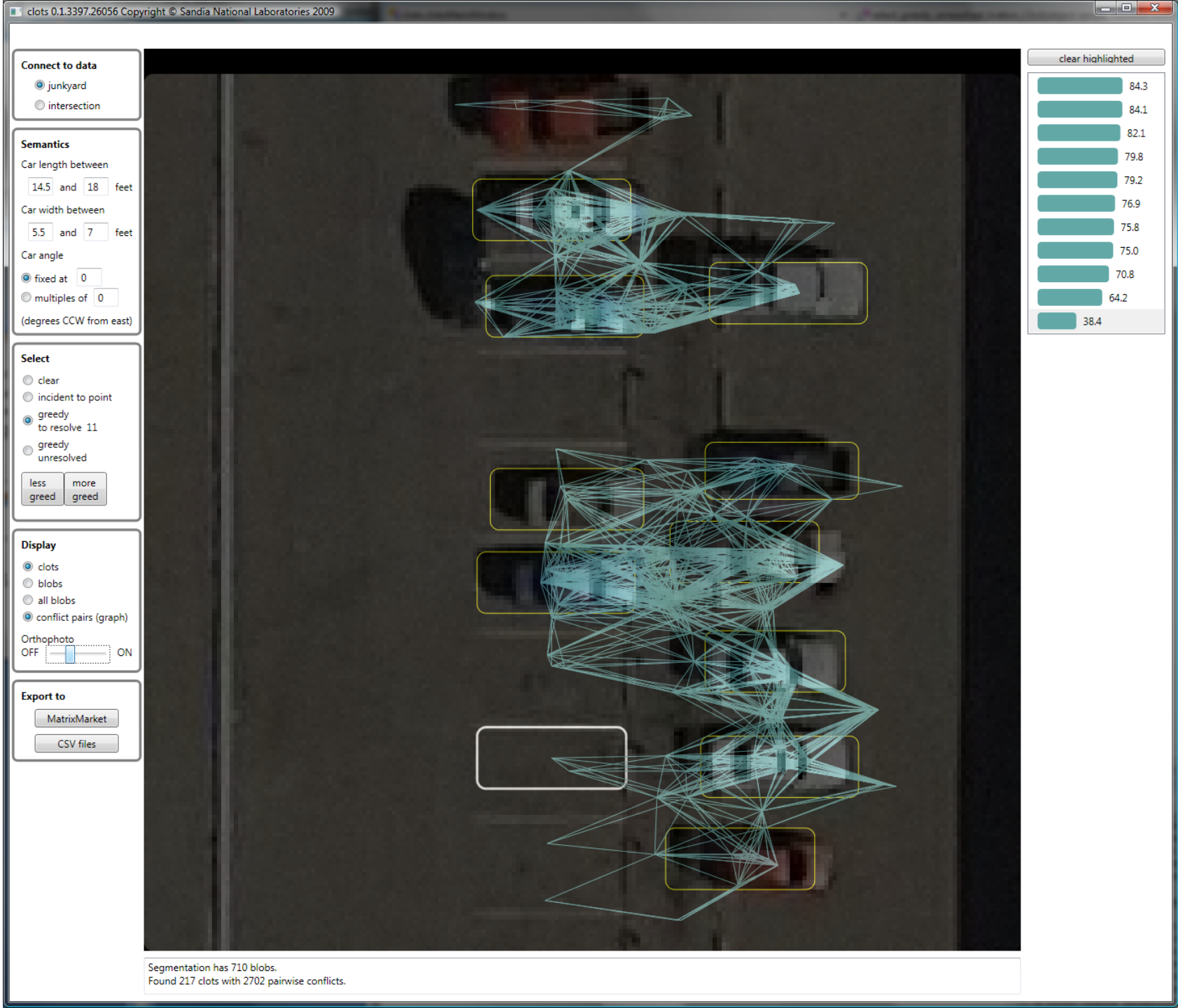
Segmentation has 710 blobs.  
 Found 217 clots with 2702 pairwise conflicts.

Greedy resolution

# Semantic analysis



# Pair wise conflicts





# Community finding

