



# Requirements Engineering Magic

Practical Application of Systems Engineering Alchemy

Tim Wiseley, Sandia National Laboratories

Kent de Jong, University of Maryland and  
Sandia National Laboratories (retired)



**A. JAMES CLARK**  
SCHOOL OF ENGINEERING

Sandia National Laboratories is a multi program laboratory managed and operated by Sandia Corporation, a wholly owned subsidiary of Lockheed Martin Corporation, for the U.S. Department of Energy's National Nuclear Security Administration under contract DE-AC04-94AL85000.





# Requirements Engineering Magic

Practical Application of Systems Engineering Alchemy

Tim Wiseley, Sandia National Laboratories

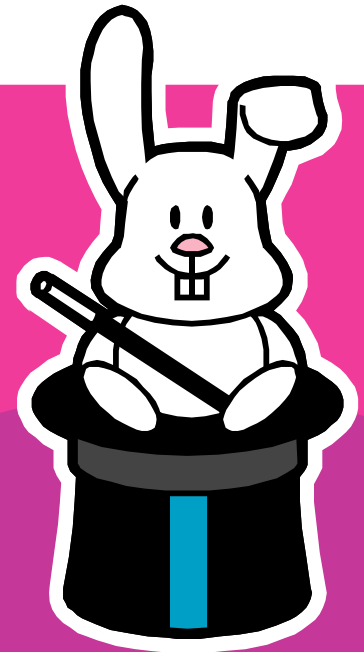
Kent de Jong, Treasurer, INCOSE-Chesapeake Chapter

# Background

- What is requirements engineering?
- Our project effort coincident with ISO standard
- Most engineers avoid developing requirements

# How do we develop well written, high quality requirements?

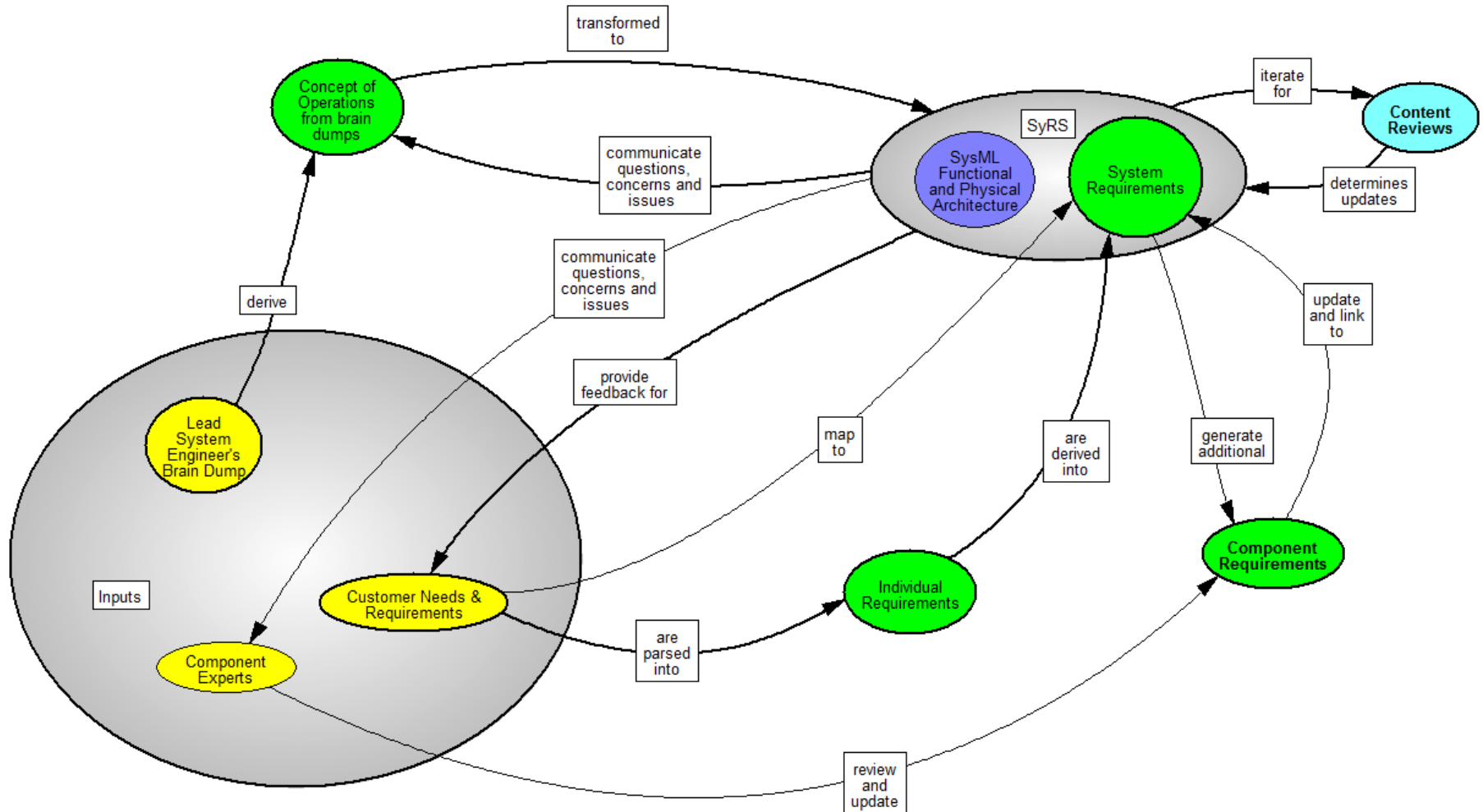
# Magic



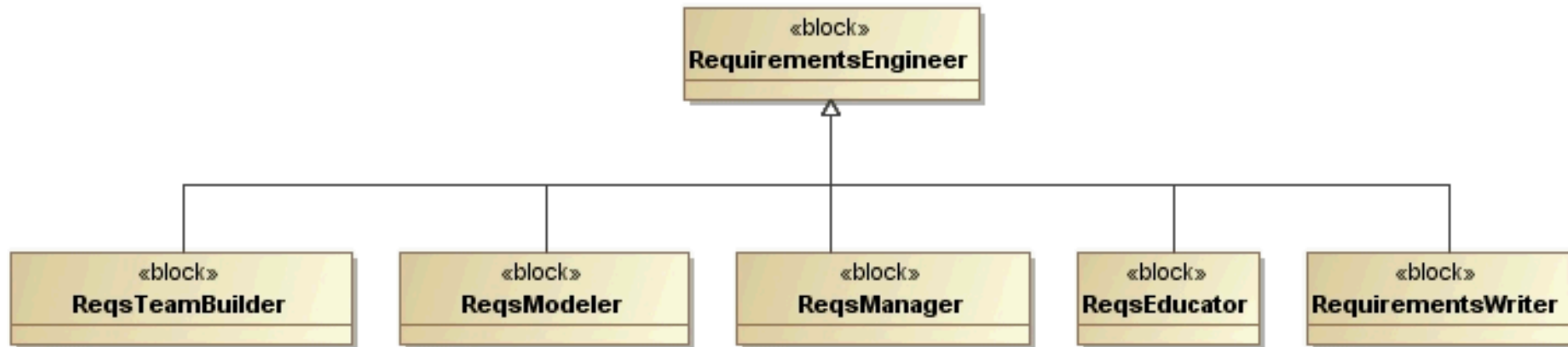
# How to Make Magic

- Tailor, create RE process working for project
- Model to develop better requirements
- Teaming for requirements engineers

# A Tailored Process



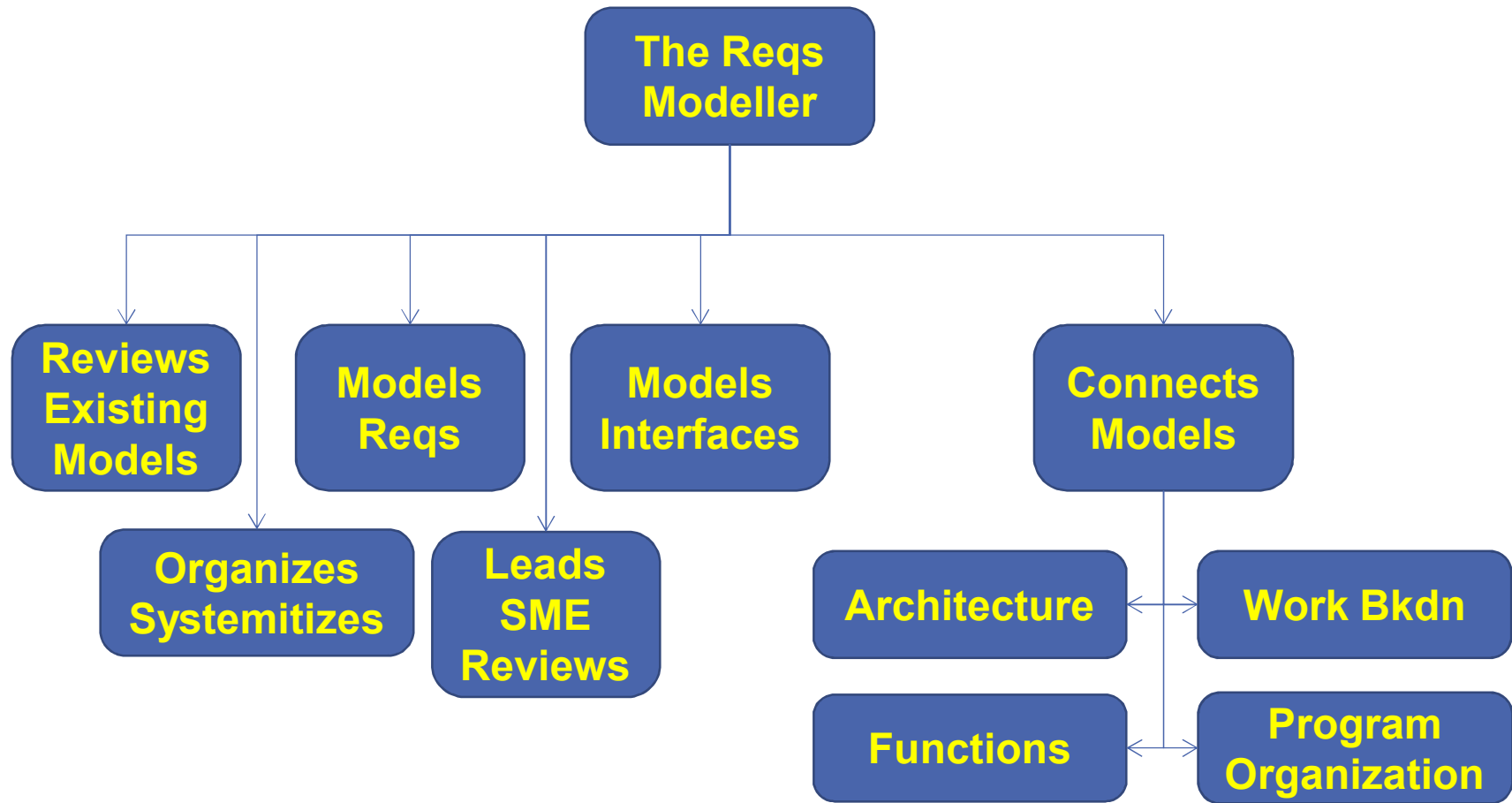
# Requirements Engineering Roles



# The Helpful Requirements Author

- Asks “Why”
- Understands problem domain
- Uses operational concepts
- Furnishes rationale
- Includes verification method & strategy





# Requirements Team Building

- Gather groups of experts, elicit requirements
  - Build teams dedicated to good requirements
- Small requirements authoring team
  - 1-2 people
  - More productive than single requirements engineer
  - Mentoring new requirements engineers
- Teaming & uncertainty

# System Engineering Alchemy

- Requirements engineering, a TEAM effort
- Tailor existing process, discover RE roles
- Modeling helps develop good requirements



# Questions?



# Our Contact Information

- Tim Wiseley
  - Sandia National Laboratories
  - [thwisel@sandia.gov](mailto:thwisel@sandia.gov)
- Kent de Jong
  - University of Maryland
  - [kdejong@umd.edu](mailto:kdejong@umd.edu)
  - [kent.dejong@incose.org](mailto:kent.dejong@incose.org)