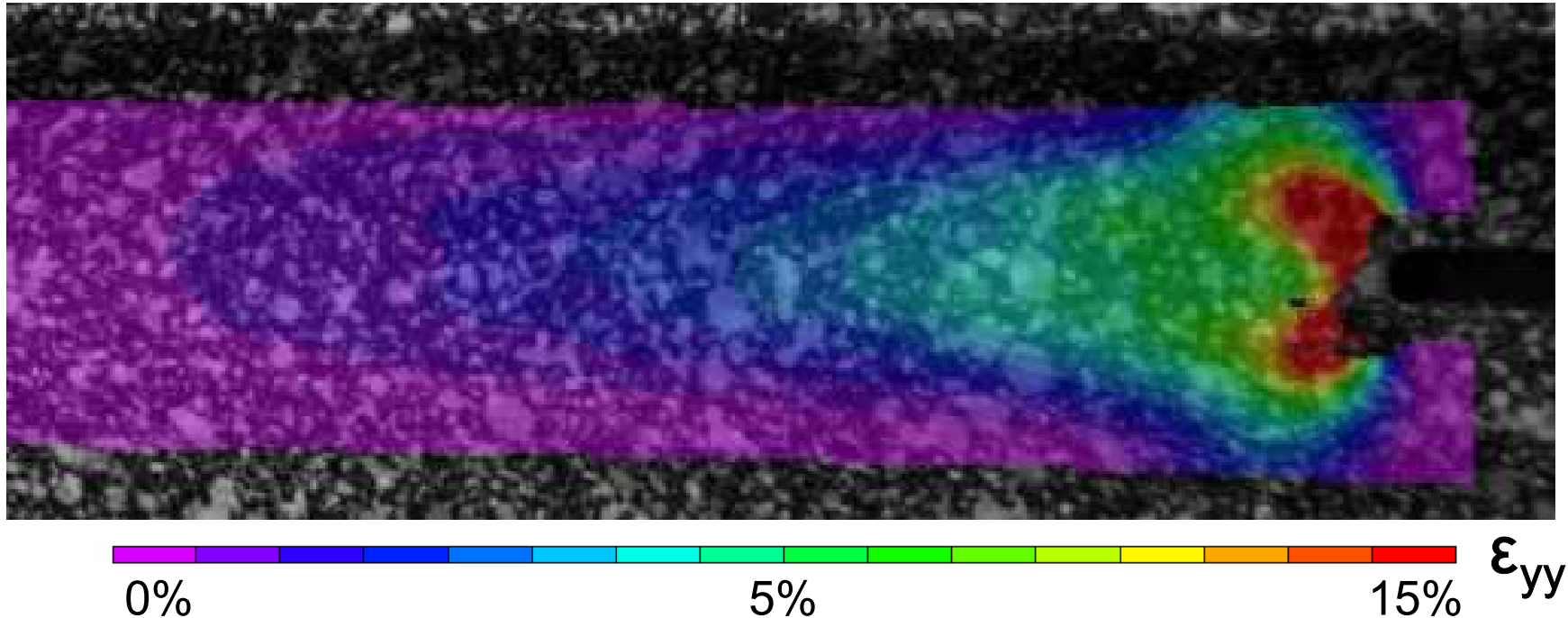


Stable Crack Growth Measurement using DIC as a Tool for Model Validation

SAND2007-3490C



SEM Annual Conference 2007

Phillip L. Reu

Gerald Wellman and Brendan Rogillio

Senior Member Technical Staff

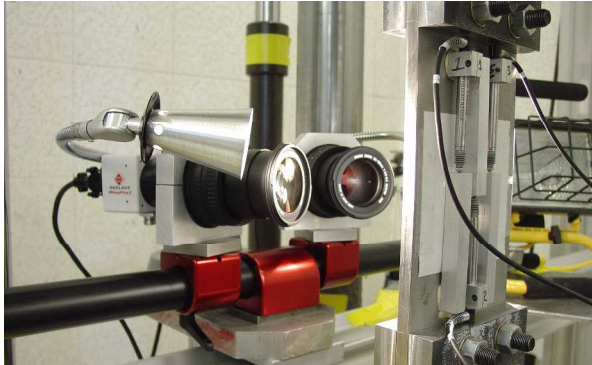


Sandia is a multiprogram laboratory operated by Sandia Corporation, a Lockheed Martin Company, for the United States Department of Energy under contract DE-AC04-94AL85000.

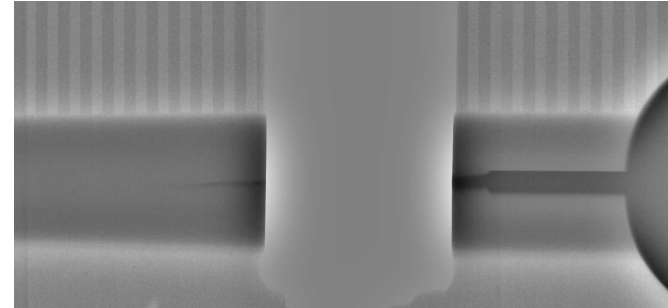


Crack growth data is important for model validation and

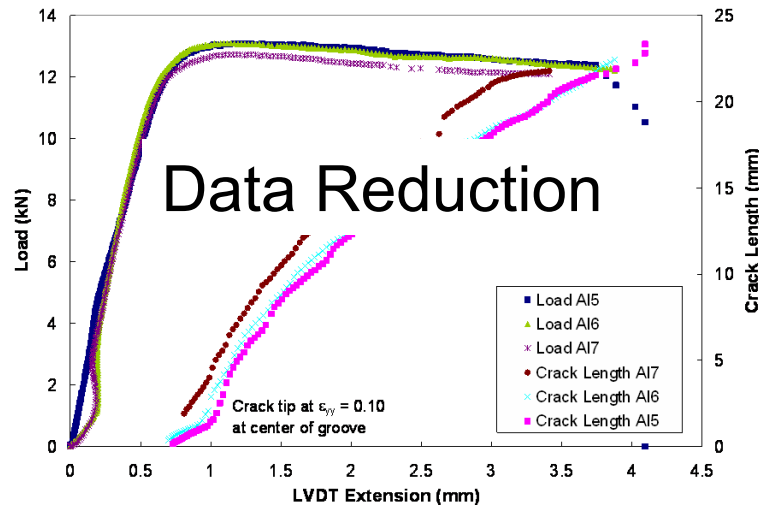
Experimental Setup



Crack Calibration



plr2



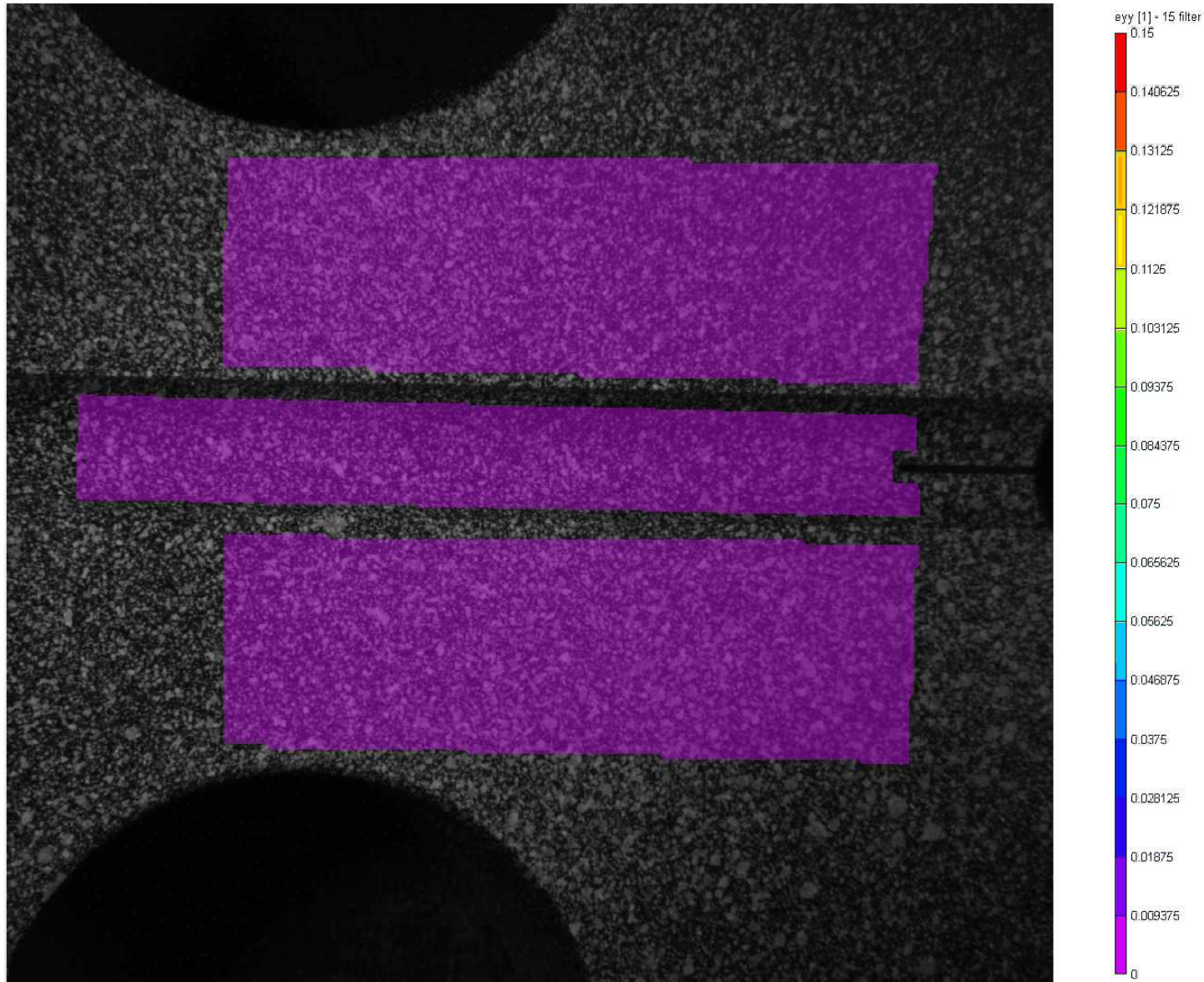
Slide 2

plr2

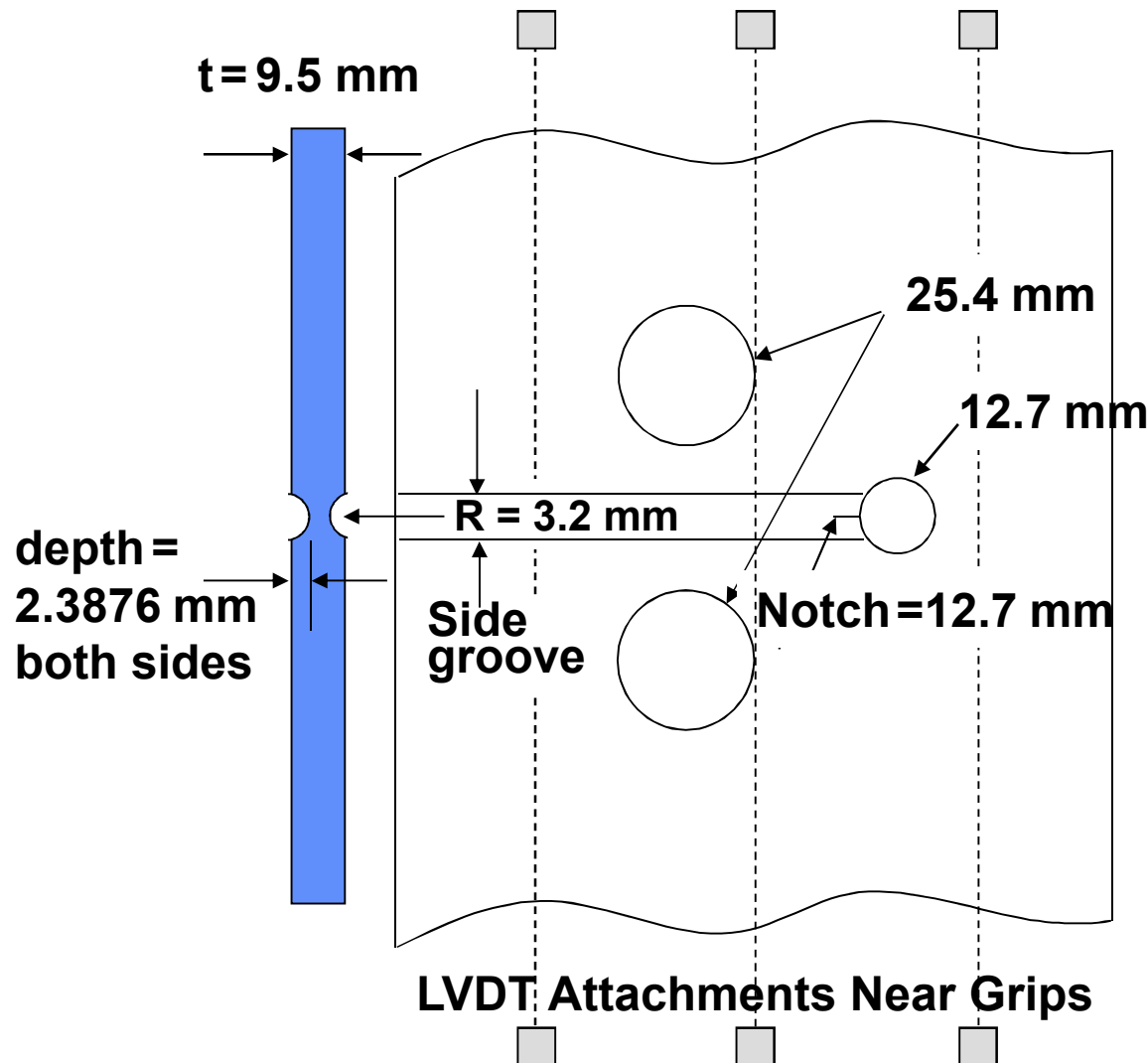
Some Model Image would be nice to tie this together.

plreu, 3/14/2007

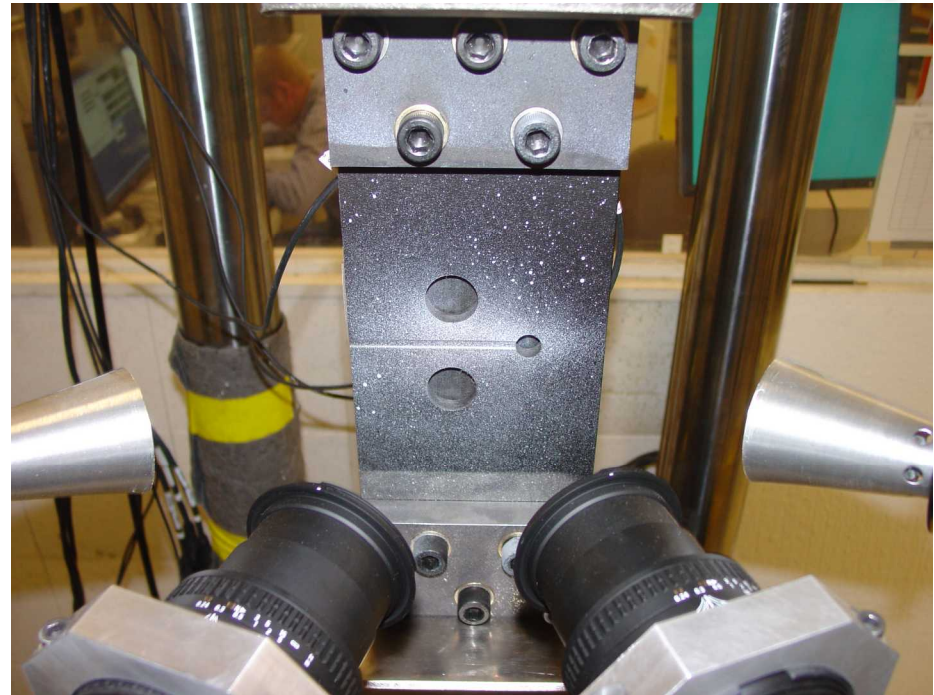
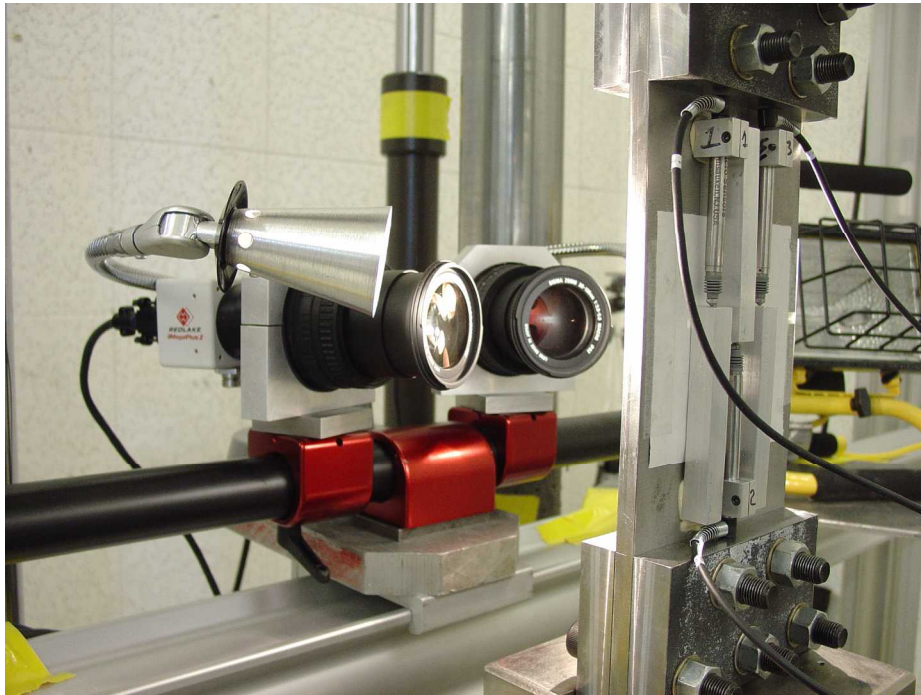
Digital image correlation (DIC) provides full-field surface strain information



Special sample geometry created a slow, stable crack growth in tension

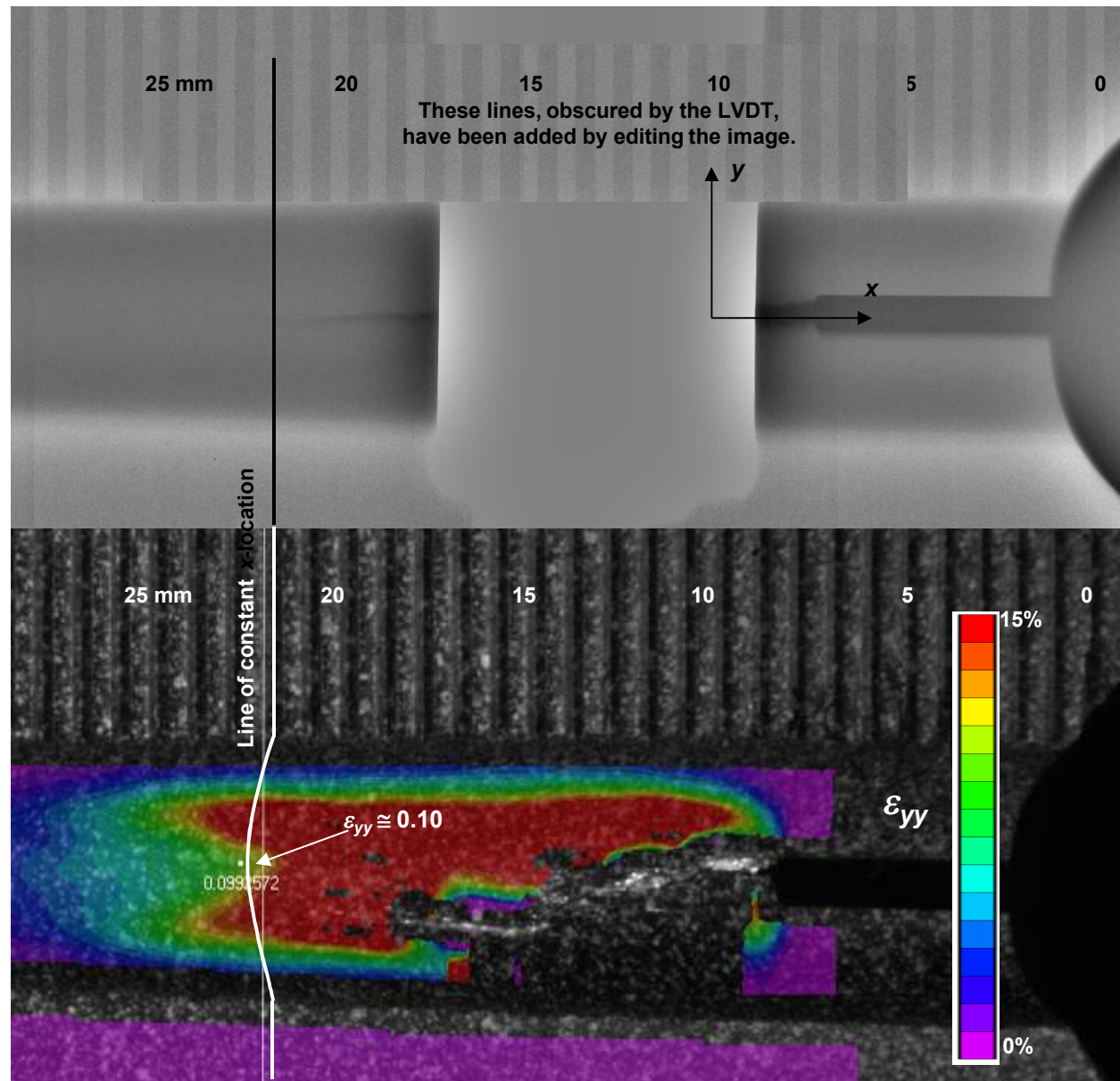


The experimental setup is crucial to getting reliable DIC results

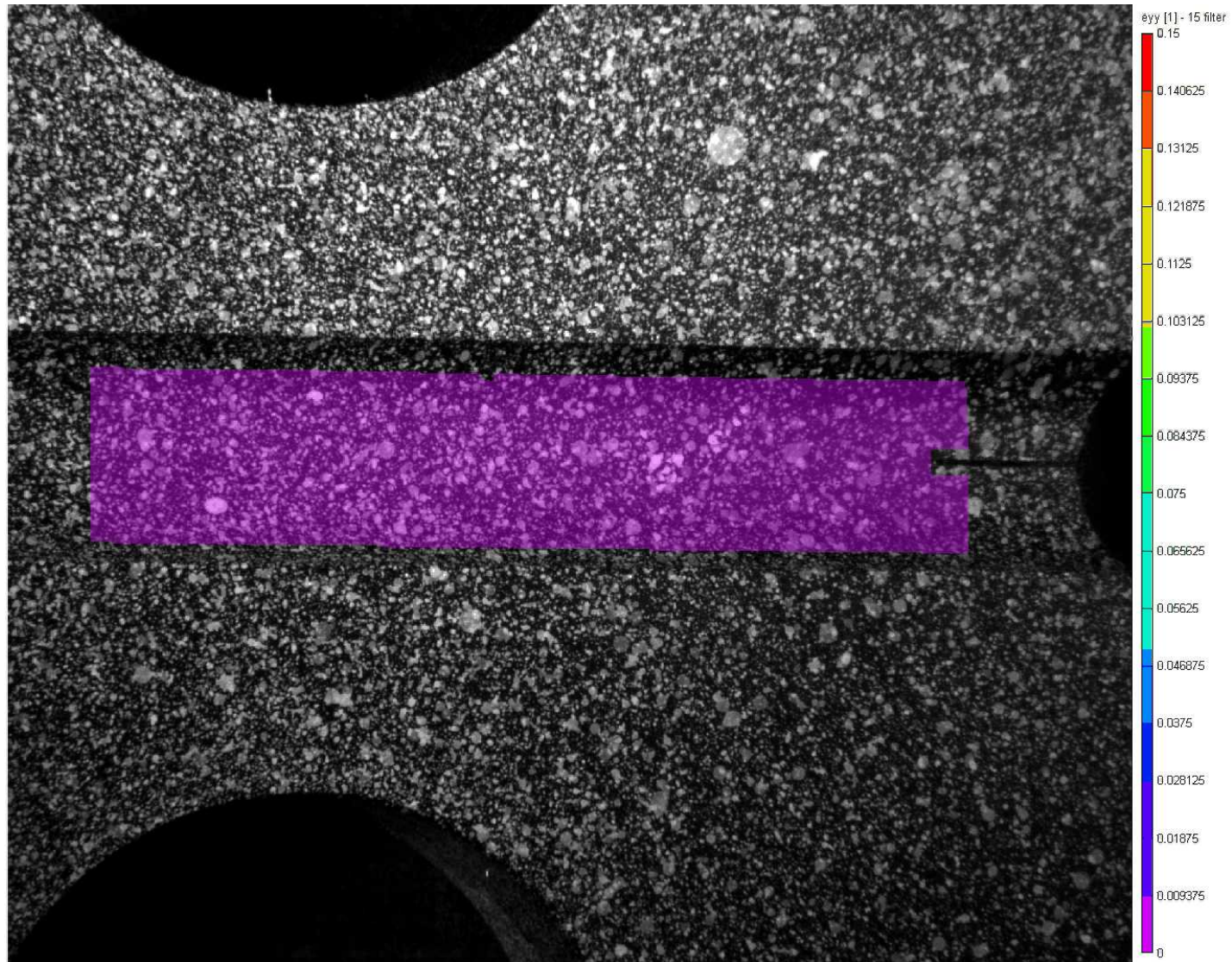


1. Camera mounting – Rigid and properly angled
2. Speckling – Optimized for size and density
3. Illumination – Even, diffuse. Be careful of heat waves

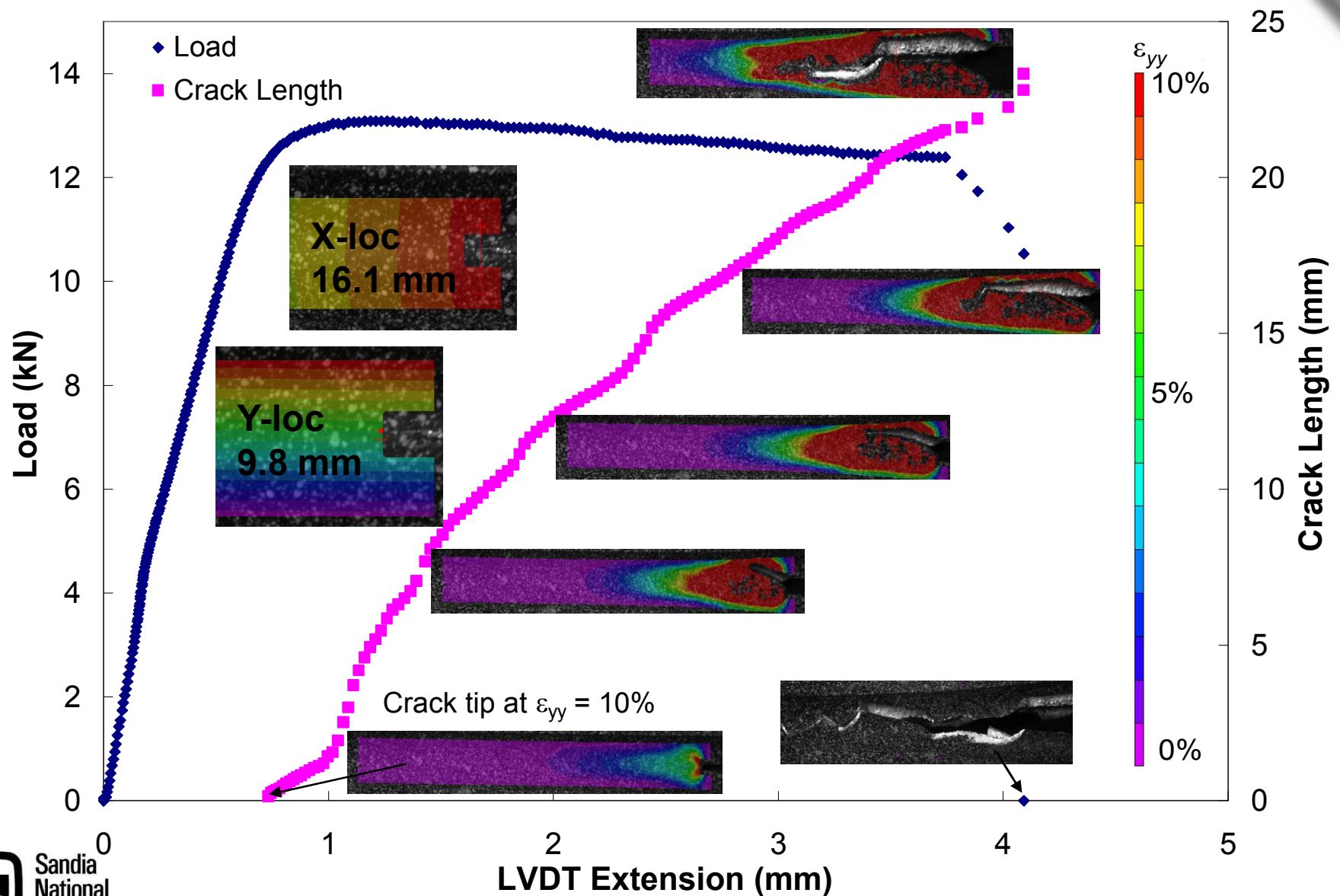
DIC may provide a new and easier way to track the crack length...



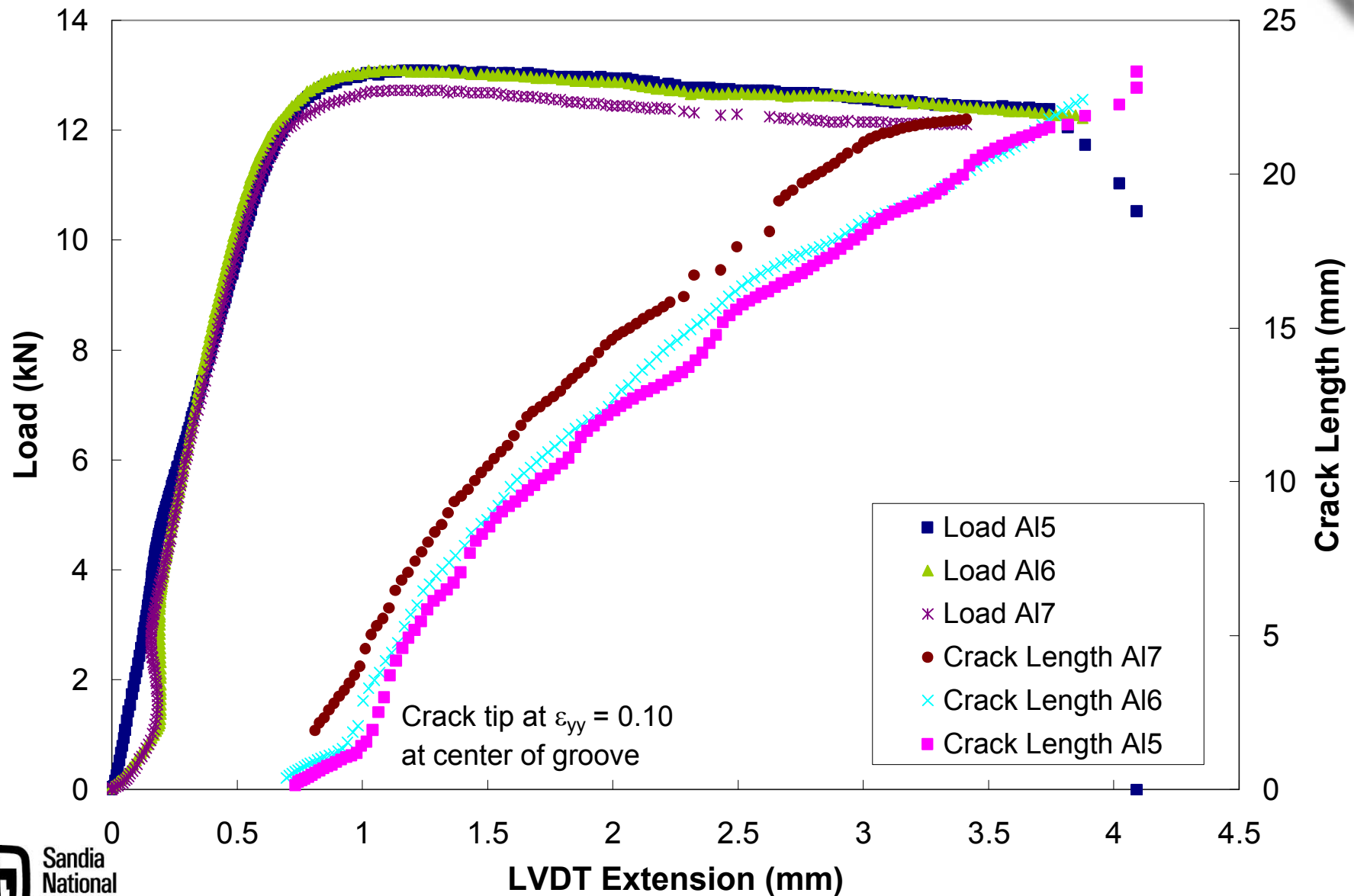
Full-field techniques add details to experimental results that may be missed otherwise



Crack-length is tracked at 10% strain as the sample fails

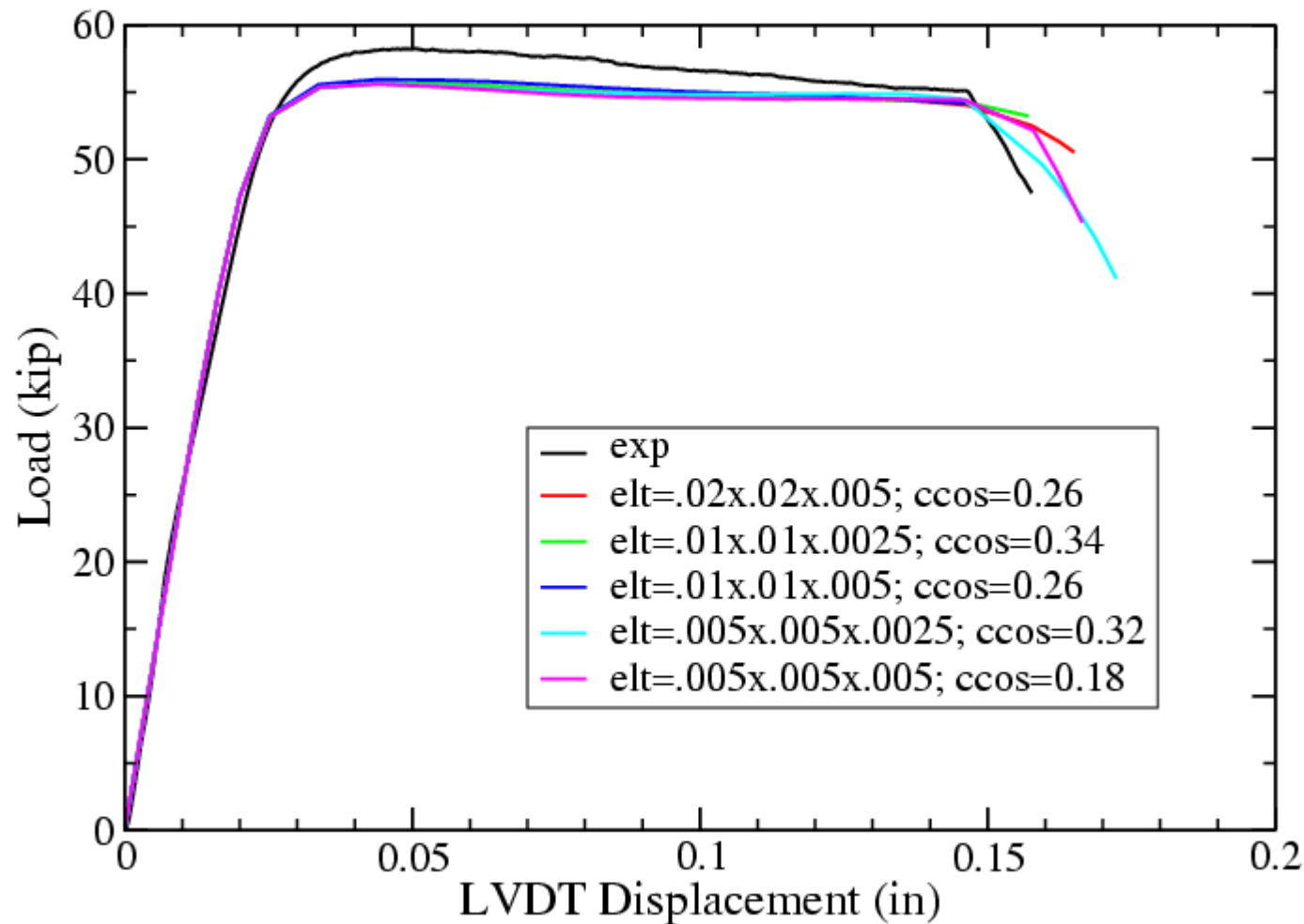


6061-T6 Aluminum sample results showed good repeatability

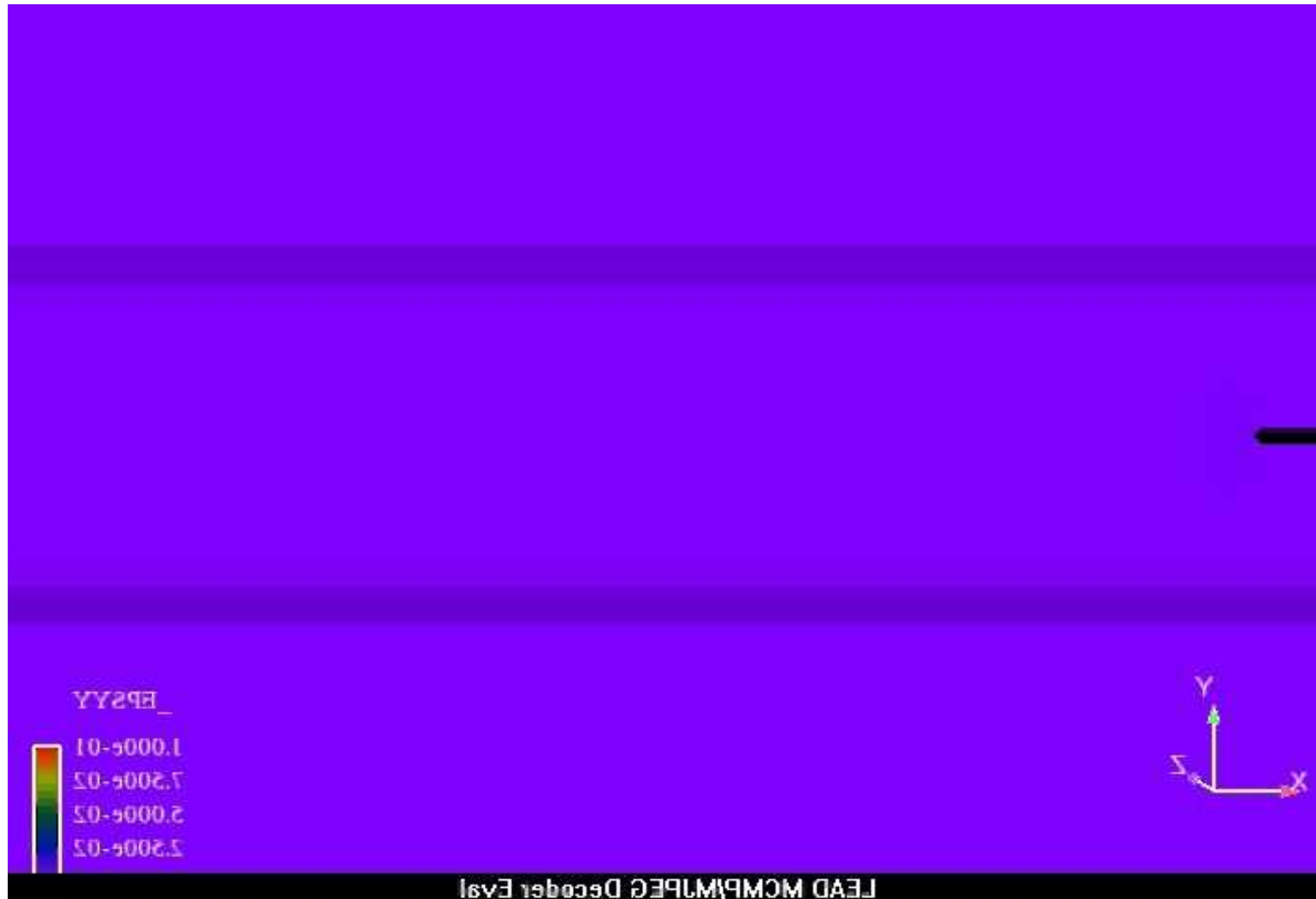


Model results correctly capture crack growth results

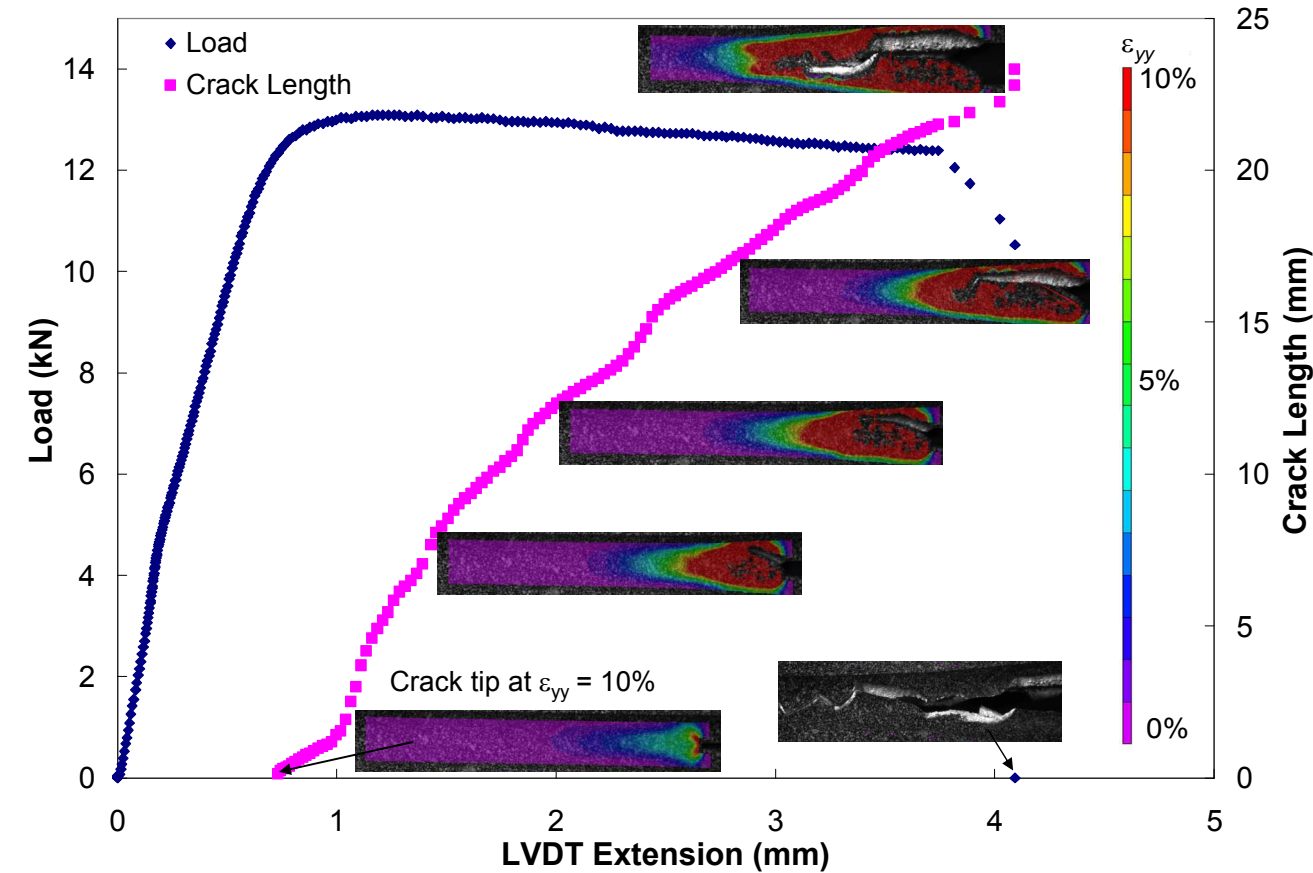
3-Hole Tension - 6061-T6 Aluminum



These results provide new data for use in model development



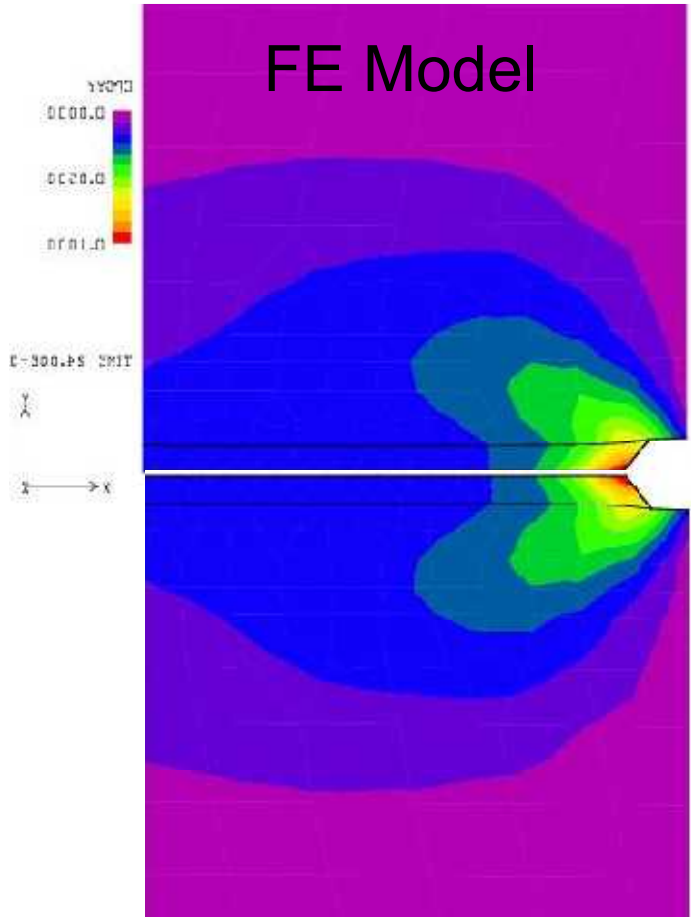
DIC provides a simple (accurate?) method of tracking crack lengths



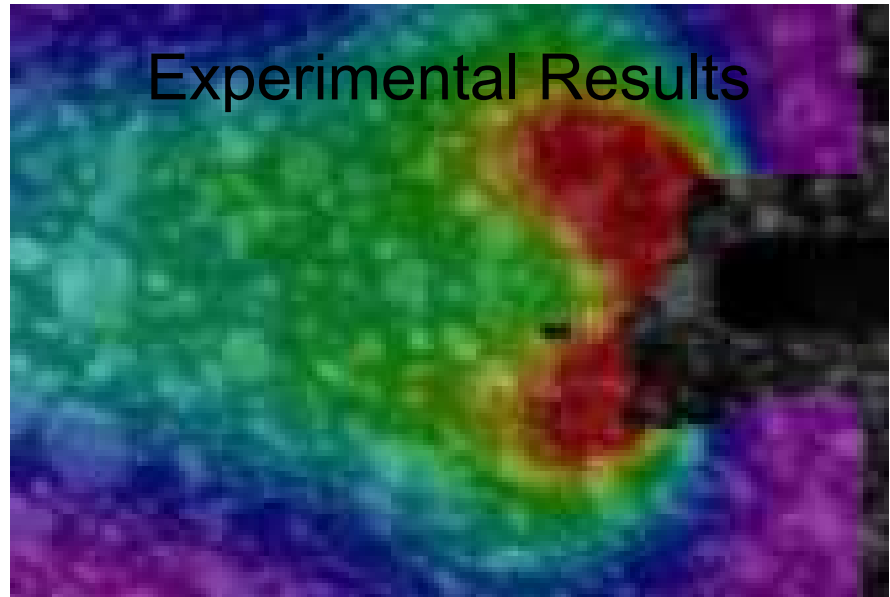
Questions??

DIC provides a simple (accurate?) method of tracking crack lengths

FE Model



Experimental Results



Questions??