

Beyond **D**esign **B**asis **E**vents

Prioritization TTX

Hyatt Regency Chicago

Wednesday May 08, 2013

Session 2A Severe Events

10:00 am

Sam Henderson

Sandia National

Laboratories



May 6-10, 2013, Hyatt Regency Chicago, Chicago, Illinois





EM Exercise Program Integration

Program Element/ Sub-element No.	Program Element/ Sub-element Description	Year 1		Year 2		Year 3		Year 4		Year 5		Year 6		Year 1		Year 2		Year 3		Year 4		Year 5		Year 6	
		FY08		FY09		FY10		FY11		FY12		FY13		FY14		FY15		FY16		FY17		FY18		FY19	
		FY19		FY20		FY21		FY22		FY23		FY24		FY25		FY26		FY27		FY28		FY29		FY30	
		Scheduled	Complete	Scheduled	Complete	Scheduled	Complete	Scheduled	Complete	Scheduled	Complete	Scheduled	Complete	Scheduled	Complete	Scheduled	Complete	Scheduled	Complete	Scheduled	Complete	Scheduled	Complete	Scheduled	Complete
	Transportation																								
	Radiological			•										•										•	
	Chemical	•										•										•			
	Natural Phenomena																								
	BDB begin fy12			•								•					•								
	Severe Weather begin fy12			•												•									





Beyond Design Basis Discussion Based TTX





Purpose

- Self-identify gaps and improvements that may be needed.
- Identify areas of concentration and recognize areas of improvement to ensure the continued adequacy of emergency response facilities, equipment, and communications systems for emergency events needing SNL/NM and non SNL/NM emergency resources.





Occurrence

- On 15 February 2012, a 7.8 magnitude earthquake shakes the Albuquerque Area with an epicenter located just South of the Sunport International Airport (Latitude 35.01553 deg. N and Longitude 106.61048 deg. W). Significant damage has occurred within a 20 mile radius of the epicenter.
- All KAFB resources, Albuquerque Ambulance, Albuquerque Fire, Albuquerque PD, Bernalillo Fire, and Bernalillo Sheriff Dept. are committed to serving their primary needs and not available to respond to SNL/NM.





Impact

Within the first ten minutes after the earthquake the following has occurred;

6588	Fracture pool bottom resulting in loss of water – leak rate estimate 1-gpm – what if much higher?
6585	Broken glass partial collapse injured personnel
TA-V	Multiple building damage, small collapses, broken glass, injured personnel
Z-Machine	In the middle of doing a shot - loss of power - some building failure, injured personnel from falls
Mesa	Some building damage - partial collapse of chemical storage building - multiple toxic gas alarms, collapse of acid waste return, injured personnel
Building 810	Multiple security alarms, injured personnel
Medical Clinic	Some damage and a couple of injured personnel
Hardin Road	Fractured and impassable at 9th st
Site Wide	Multiple alarms, water flow and smoke as well as security
KAFB	Multiple alarms, water flow and smoke as well as security and KUMNMSC
ABQ	Multiple alarms, Public Safety Organizations Overwhelmed





Facilitated Discussion 1 (Information Flow)

- Anticipated initial response
- Initial communications
- Initial reporting process
- Information communicated
- How is the call received and who handles dispatch
- What assets are dispatched
- What occurs after initial dispatch





Facilitated Discussion 2 (Response)

- Anticipated initial response
- Response Prioritization
- What information will be communicated to responding assets
- How will unified command be established and communicated
- How will size-up occur
- EOC Operations





Facilitated Discussion 2 (Response) cont.

- Staging areas
- Command post
- Additional assets requested what and how
- Immediate notifications
- PA's and PAR's what and how
- Categorization & Classification
- Incident scene communications
- Information to Medical





Facilitated Discussion 2 (Response) cont.

- Information to CAT
- Information from CAT
- Initial entry
- Field monitoring
- Initial reporting process
- Information communicated





Facilitated Discussion 3 (EOC & Media)

- Anticipated initial response
- Initial communications between the field and the EOC
- Initial reporting process
- Additional assets requested what and how
- Information communicated, how, to whom
- How is the call received and who handles dispatch
- Liaison between KAFB and SNL
- Offsite notifications

Annual Meeting, May 6-10, 2013, Hyatt Regency Chicago, Chicago, Illinois





AAR

Our Process

Section A	Surveillance Initiation
PAL Use Only	
EM Surveillance Number:	LESA Number:
<u>Surveillance Title:</u> Beyond Design Basis Discussion Based TTX	
<u>Surveillance Description:</u> (Scope, Selected Requirements, Elements)	
<p>A facilitated discussion to evaluate the needs, current capabilities, and ability of the SNL/NM Emergency Response Organization (ERO) to coordinate a response to a Beyond Design Basis (BDB) event that causes the loss of infrastructure capabilities and mutual aid; and that impacts multiple SNL/NM facilities. This tabletop exercise discussed the ability to bring together and communicate with the various organizations needed to have an effective and unified emergency response and the SNL/NM process that may be utilized to prioritize responses to multiple needs. The purposes of this Emergency Management Discussion-based TTX were to:</p> <ul style="list-style-type: none">• Self-identify gaps and improvements that may be needed.• Identify areas of concentration and recognize areas of improvement to ensure the continued adequacy of emergency response facilities, equipment, and communications systems for emergency events needing SNL/NM and non SNL/NM emergency resources.• Maintain personnel skills and competency to assure an adequate and sustained emergency response capability.• Assess the adequacy of the implementing procedures, notification and communications networks, and emergency response equipment utilized during SNL/NM emergencies.• Identify additional opportunities for improvement.	



Surveillance Results:

SME Tommy C.

(see handout)

- Telecommunication:
- Incident Command:
- EOC Mgr.
- EOC Ops/Planning:
- EPI: email, cell phones, crawler on Techweb
- CAT:
- Pro Force
- Medical:
- Offsite Interfaces: Reach out to LANL?
Pantex?





Opportunities For Improvement OFI

- OE Recommendation to begin conducting exercises on Beyond Design Basis accidents; Reference DOE Safety Bulletin after the Fukushima Daiichi earthquake damage. Policy has not yet been issued so the following are recommendations rather than OFI's.
- Incorporate self-help and basic preparedness for Members of the Workforce.





OFls cont.

- Develop process for windshield assessments and include instruction to EPHA facilities to contact EOC rather than EOC contacting them.
- Develop a family notification plan and a means for responders to know the well being of their own families.
- Ensure adequate supplies of food, water and other essentials are available for responders.





OFls cont.

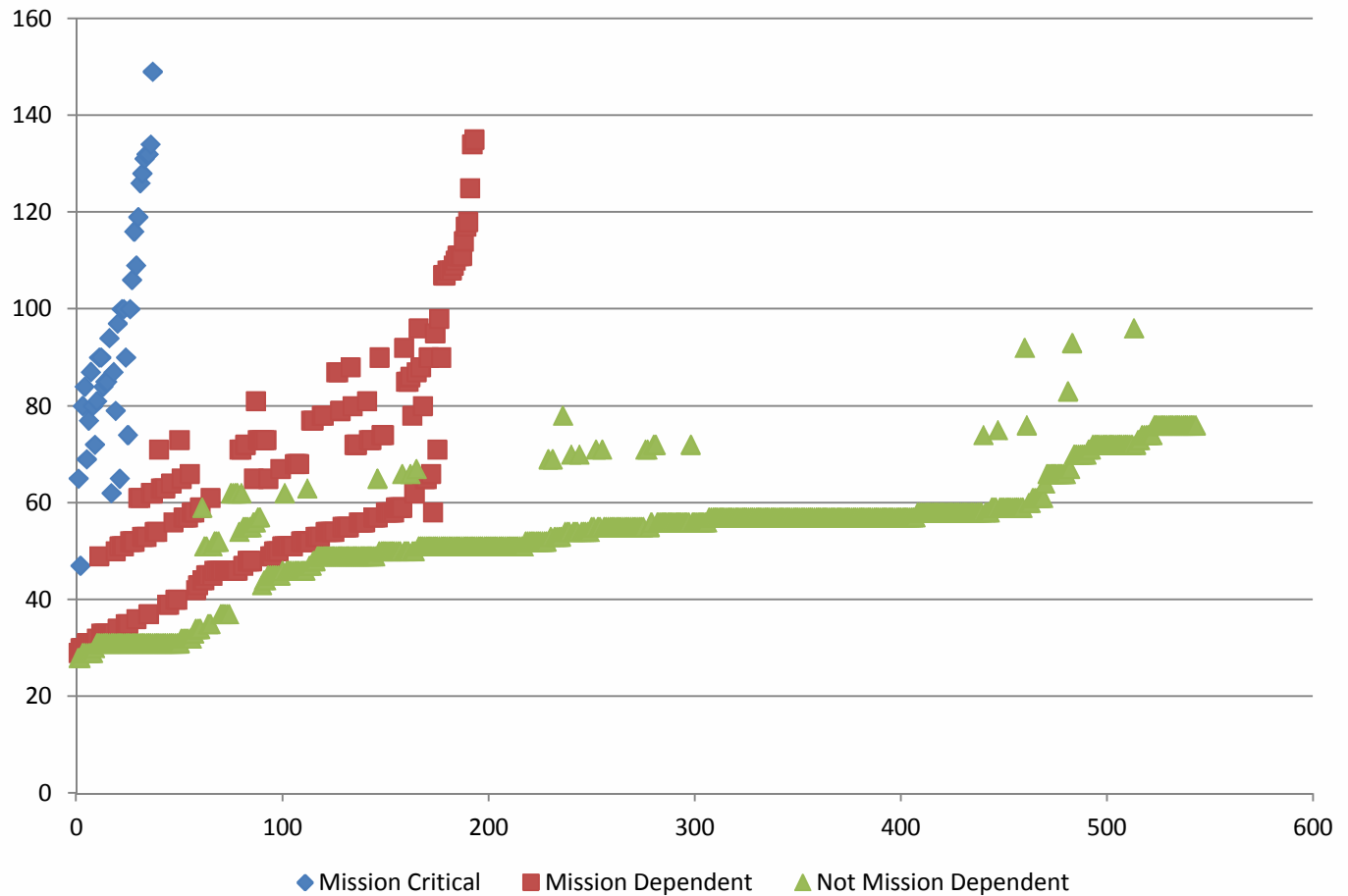
- Evaluate "Drop, Cover & Hold" instructions for Members of the Workforce.
- Develop priorities for responders, i.e., ERT, Pro Force, Medical for such an event.
- Consider RACES for communications.
- Review SNL/CA earthquake plan for applicability to SNL/NM.





Prioritization

Master Risk Index



Annual Meeting, May 6-10, 2013, Hyatt Regency Chicago, Chicago, Illinois



Questions?

sahende@sandia.gov

