

LA-UR-14-20043

Approved for public release; distribution is unlimited.

Title: Lujan Center Introduction, Safety & Security

Author(s): Nakotte, Heinrich
Gochanour, Jason R.

Intended for: 10th LANSCE School on Neutron Scattering, 2014-01-06 (Los Alamos, New Mexico, United States)

Issued: 2014-01-06



Disclaimer:

Los Alamos National Laboratory, an affirmative action/equal opportunity employer, is operated by the Los Alamos National Security, LLC for the National Nuclear Security Administration of the U.S. Department of Energy under contract DE-AC52-06NA25396. By approving this article, the publisher recognizes that the U.S. Government retains nonexclusive, royalty-free license to publish or reproduce the published form of this contribution, or to allow others to do so, for U.S. Government purposes. Los Alamos National Laboratory requests that the publisher identify this article as work performed under the auspices of the U.S. Department of Energy. Los Alamos National Laboratory strongly supports academic freedom and a researcher's right to publish; as an institution, however, the Laboratory does not endorse the viewpoint of a publication or guarantee its technical correctness.

70 YEARS OF CREATING TOMORROW



Los Alamos
NATIONAL LABORATORY

Lujan Center Introduction, Safety & Security

Heinz Nakotte

New Mexico State University

Jason Gochanour

Los Alamos National Laboratory

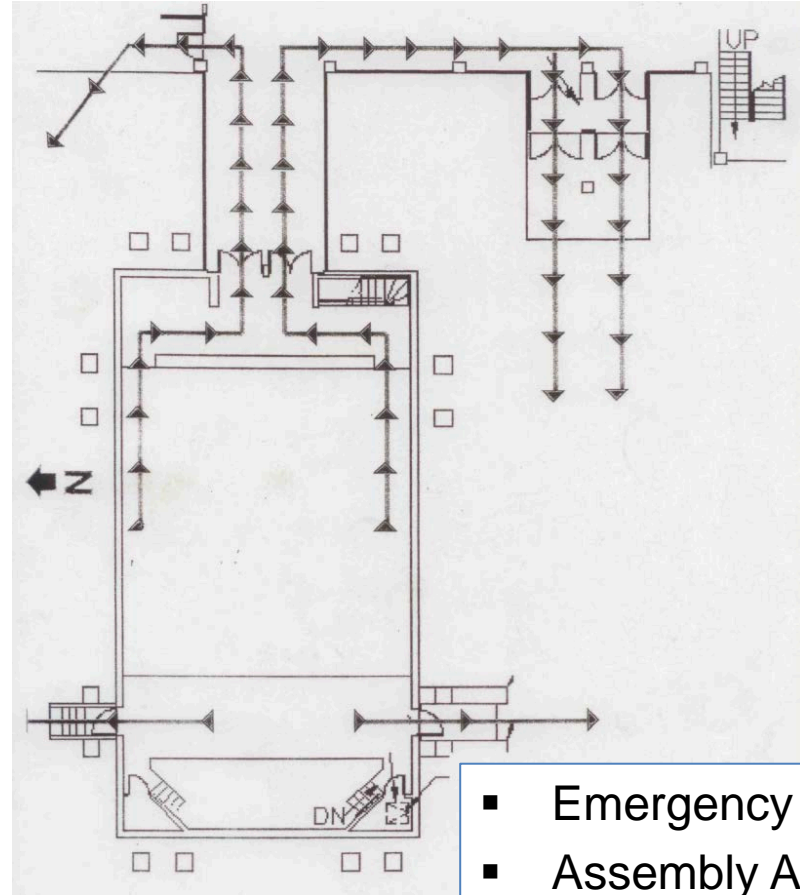
UNCLASSIFIED

You are in TA-53 Bldg 1 - Louis Rosen Auditorium



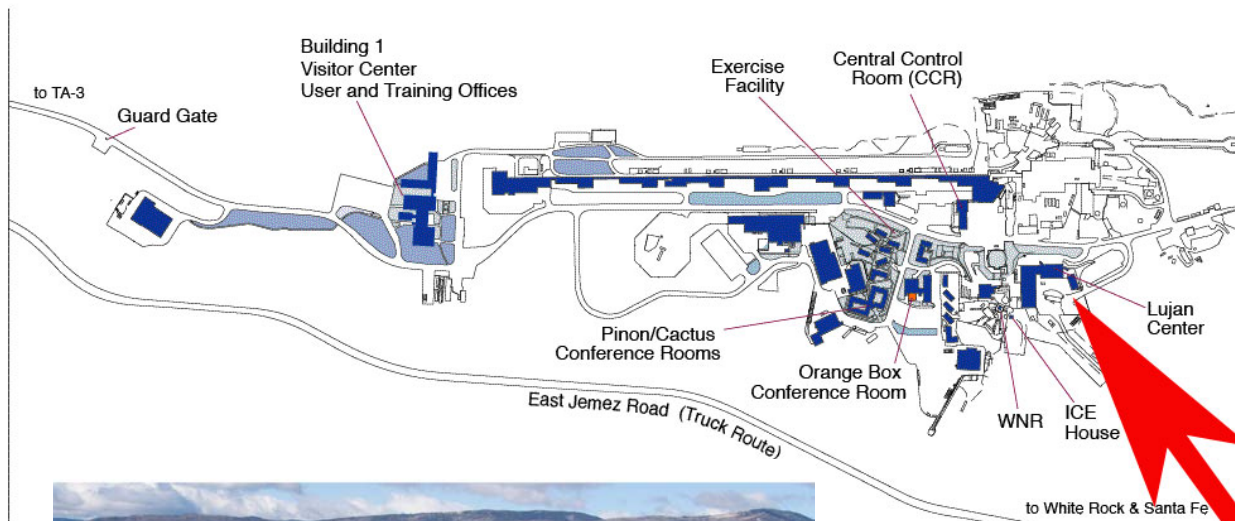
Dr. Louis Rosen
(1918 – 2009)

Nuclear Physicist and the "father" of the Los Alamos Neutron Science Center. Lead the design of the "**atom smasher**": beam of protons to create a secondary, highly intense beam of particles such as π mesons, or pions.



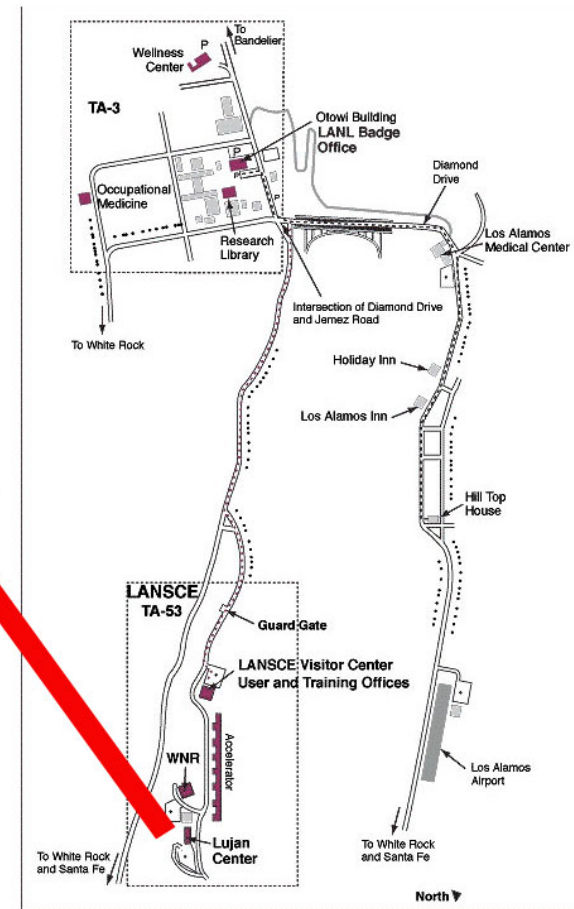
- Emergency Exits
- Assembly Area
- Bathrooms
- Cafeteria

LANSCE MAP AND AERIAL VIEW

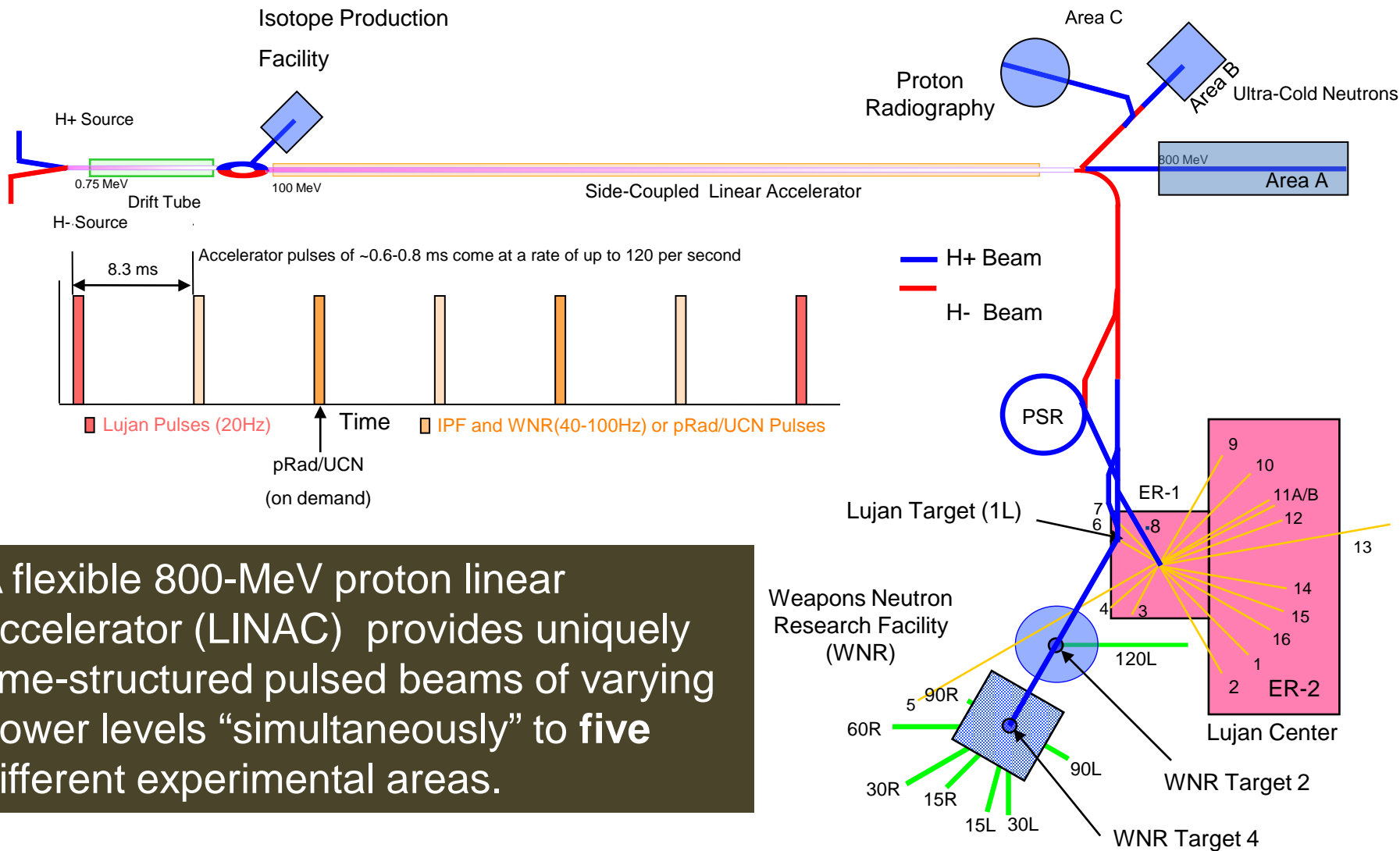


TA-53 – Building 1

Lujan Center



Weather-permitting, you can walk from the TA-53 – Bldg 1 (*lectures*) to the Lujan Center (*hands-on experiments*)..



A flexible 800-MeV proton linear accelerator (LINAC) provides uniquely time-structured pulsed beams of varying power levels “simultaneously” to **five** different experimental areas.

The Lujan Neutron Scattering Center is one of those user facilities.



Flight paths

- 11 Neutron Scattering Instruments
- 4 Available for development
- 2 Nuclear Physics Instruments

Tier 1 Flight paths

Instruments in BES user program
Asterix, FDS, **HIPPO**, **LQD**, **NPDF**,
SMARTS, **SPEAR**, PCS

Tier 2 Flight paths

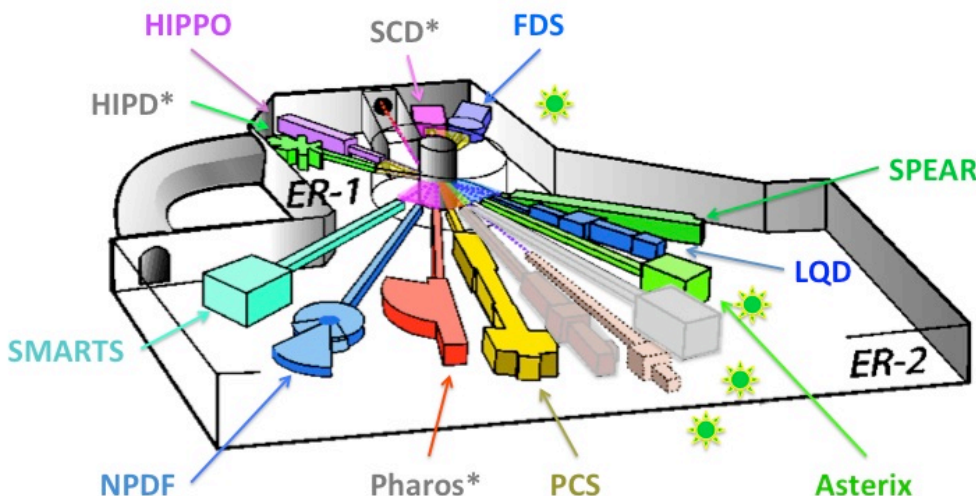
Instruments not in BES user program
HIPD, PHAROS, SCD

Tier 3 Flight paths

Open for development
8, 11b, (12), 13

Tier 4 Flight paths

NNSA programmatic use
DANCE, FP 5 (Radiography)



GATEWAY TO OTHER USER CAPABILITIES



Research Focus Areas

- Surfaces and Interfaces
Supporting Instruments: SPEAR, Asterix, LQD
- Condensed Matter - Local Structure & Nanomaterials
Supporting Instruments: NPDF, HIPD, HIPPO
- Chemical Spectroscopy & Protein Structures
Supporting Instruments: FDS, PCS
- **Materials in Extremes and Geosciences**
Supporting Instruments: HIPPO, SMARTS, NPDF

Supporting Laboratories & Sample Environments

- Chemistry and Analytical Laboratories
- Clean Room and Bio-Safety-2 Laboratory
- X-Ray Facilities
- Biolaboratory and Deuteration Stations
- **High Pressure Laboratory**

Moreover, Lujan offers a variety of specialized sample environments.

➤ Prohibited articles

- Non-government-owned firearms, other dangerous weapons and explosives
- Alcoholic beverages and other illegal substances

➤ Access to Los Alamos National Laboratory

- Badges must be worn on the chest at all times
 - » If you lose your badge while in LANL property report it to the organizers **immediately**
 - » If you see anyone without a badge, please let us know as soon as possible
- Dosimeters must be worn on the chest at all times while being at the Lujan Neutron Scattering Center

➤ Controlled Articles

Controlled articles are devices that can **store, read, write, record** or **transmit** data (P217).

- The use of the following items is **prohibited** on LANL property: personal cameras (this includes cameras in cell phones or similar), personal recording equipment, personal copiers and/or scanners.
- The use of the following items is **limited** to certain LANL areas: cell phones, smart phones, personal digital assistants (PDAs), personal digital audio players, two-way pagers, two-way radios and personal compact disc/ digital video disc (CD/DVD) write drives. **Before using any of these on-site, ask for approval by a LANL security officer and make sure you understand LANL policy**
- It is **prohibited** to connect any personal Universal Serial Bus (USB) memory device (i.e., thumb drive, memory stick, USB hard drive, etc) to any networked LANL-owned equipment.
- The use of medical devices or ankle monitor bracelets should be discussed with a security officer. [

➤ Usage Permissions

Personal **cell phones** and **laptops** are allowed at LANSCE with the understanding that all recording functionality is prohibited (no webcams, skype, audio recording, etc).

➤ Memory Sticks

Neutron-school students will be given LANL memory sticks, which they can use to copy data and material from the dedicated neutron-school computers to their personal laptops only. It is **prohibited** to use personal memory sticks.

➤ Facility Access & Escorting Requirements

- Neutron-school students have access only to the TA-53 Main And Lujan Center buildings.
- Students have to be escorted, which means that we have to know at all times where you are. ***Do not wander off!***

➤ Los Alamos National Laboratory Network Use

- **LANL computer and network resources are to be used for official purposes only** and are subject to **monitoring and inspection** (P821).
- **Unauthorized or improper use of LANL systems** use may result in **administrative disciplinary action and civil and criminal penalties.**

Examples of waste, fraud and abuse include, but are not limited to:

- Accessing pornography or gambling sites
- Downloading music
- Running a home business
- Excessive Web surfing
- LANL computers are for authorized users only.
- Users of LANL network have **no explicit or implicit expectation of privacy.**
- By using LANL systems (computers and network), the **user consents to such interception, monitoring, recording, copying, auditing, inspection, and disclosure** at the discretion of authorized site or Department of Energy personnel.
- By using LANL systems you indicate your awareness of and consent to these terms and conditions of use.

➤ Wireless Internet Access

- Connect to the **LANL Guest** wireless network
- Open a browser and navigate to a public website, i.e. www.lanl.gov
- You should be greeted with a login screen
- Type in the credentials listed on your visitor wireless paperwork
- Questions: Call (505) 695-8519

➤ Other Safety

- Pay attention to all postings and obey the requirements.
- Be aware of potential slips due to icy conditions.
- If you see something that seems unsafe, stop work immediately and talk to one of the organizers. **Safety is the highest priority at LANL.**

Have a safe and enjoyable Neutron School!