

Sandia, Environmental Testing, Tech Area III

**Albuquerque Academy Students
Land Use Visit**

November 8, 2011

**Rebecca Ullrich
Corporate Historian
Sandia National Laboratories**

Oxnard Field (1928)





Z Division: Choosing a Site (1945)



PostWar on the Base: Aircraft Demolition



1946: Building a Lab

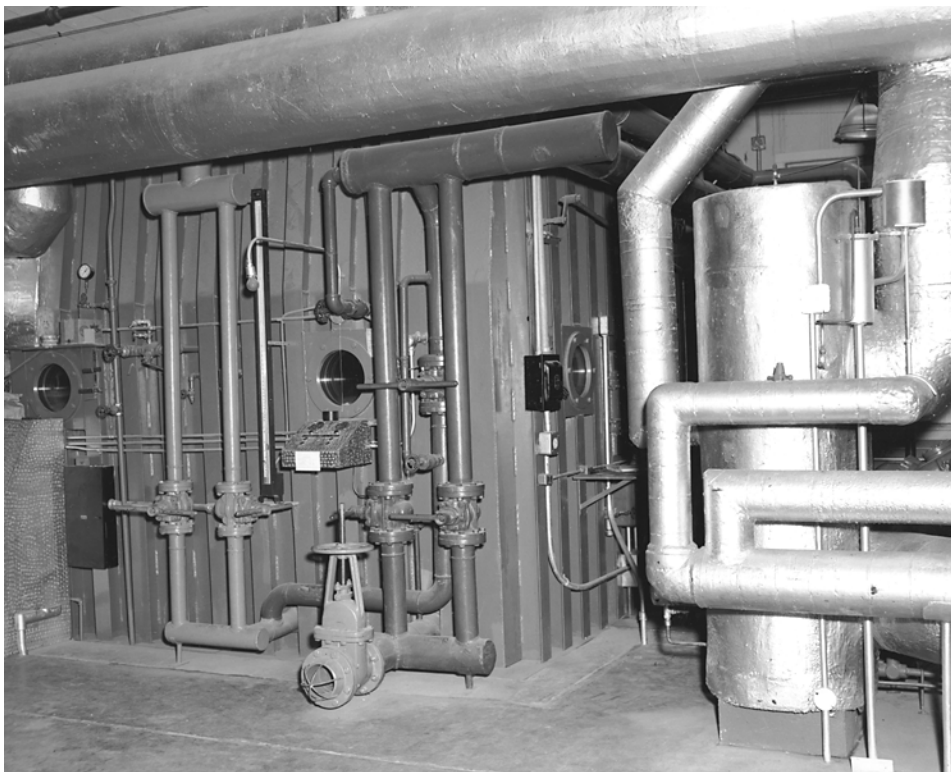


Main Sandia Tech Area: 1949





Cold Chamber, Building 828

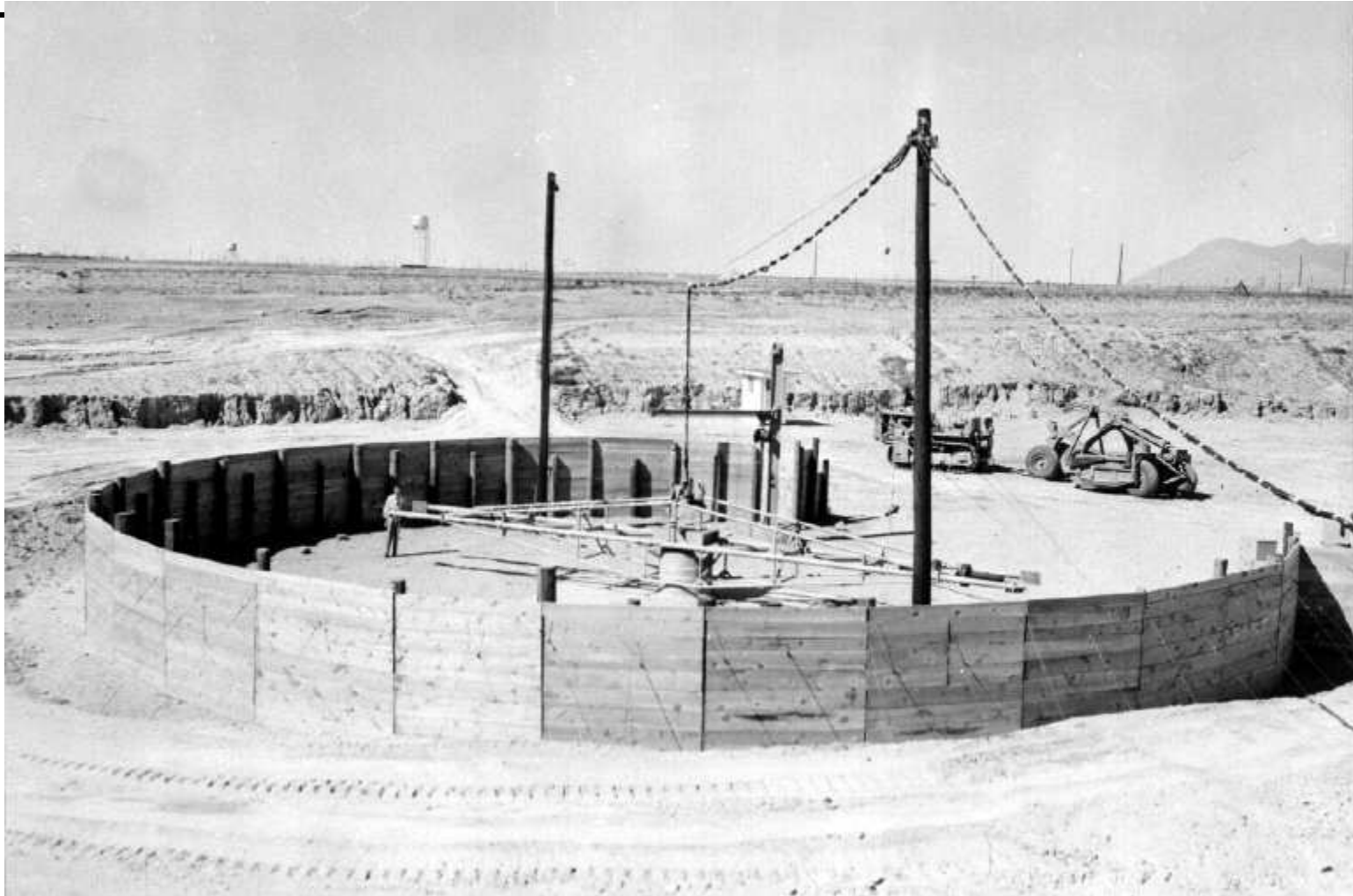




Portable Cold Chamber



First Large Centrifuge, Tech Area II (1952)

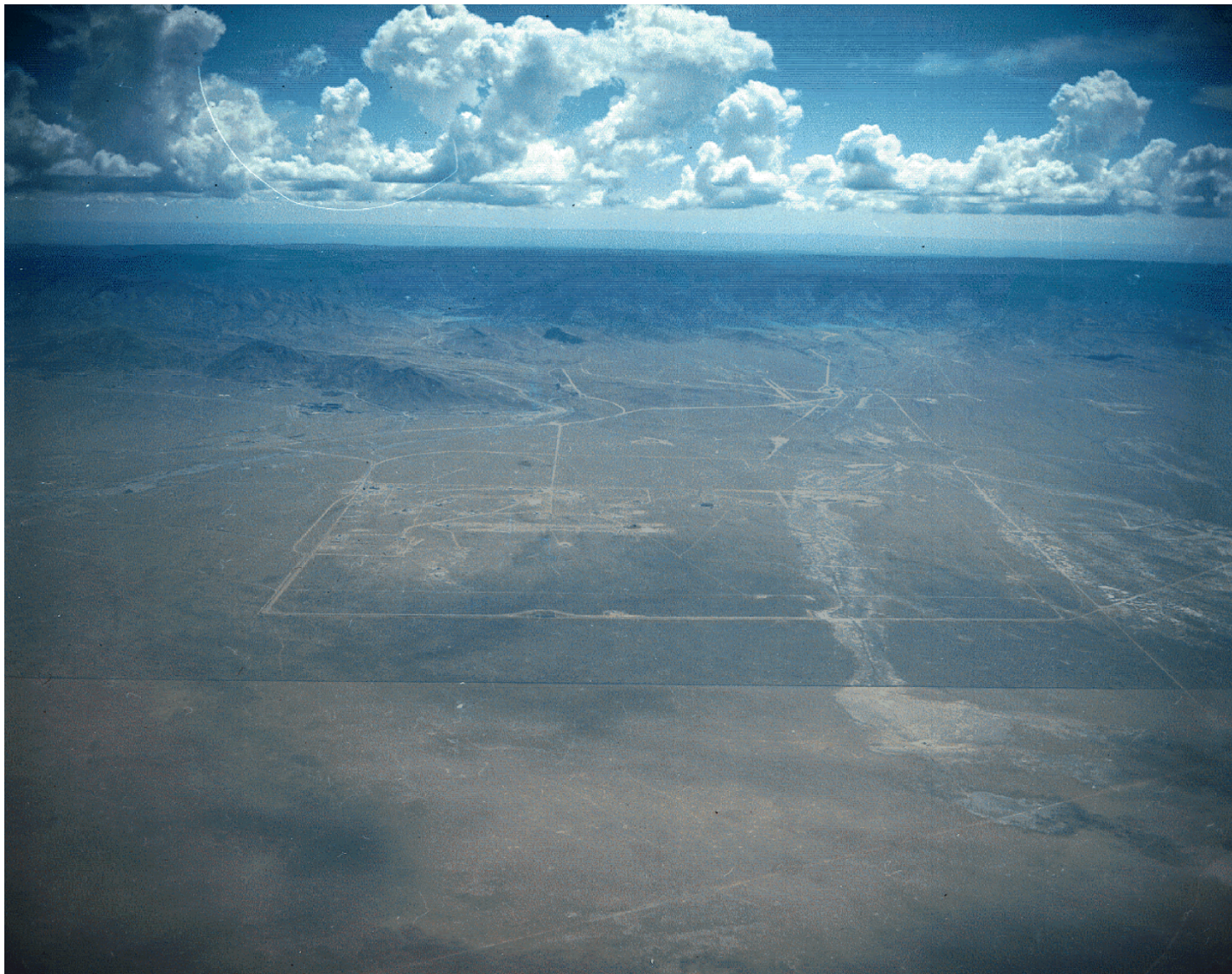


Old Centrifuge, Tech Area II (2010)

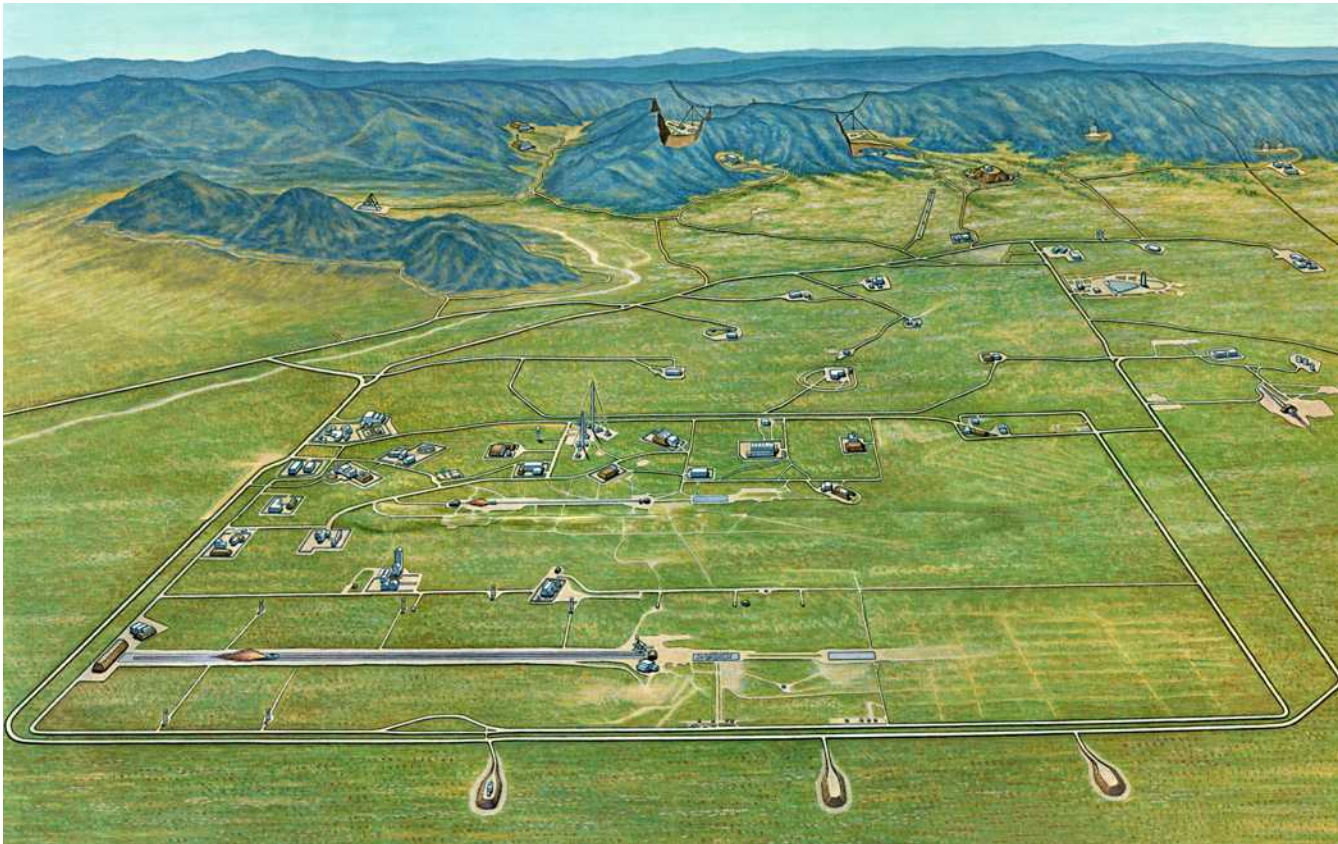




Tech Area III Aerial (1962)



Test Facilities (TAll and Coyote Test Field) ca. 1973



Hydraulic Centrifuge, ca. 1955



Hydraulic Centrifuge, 2007



Sled Track (1954)



Test on Old Sled Track (1954)



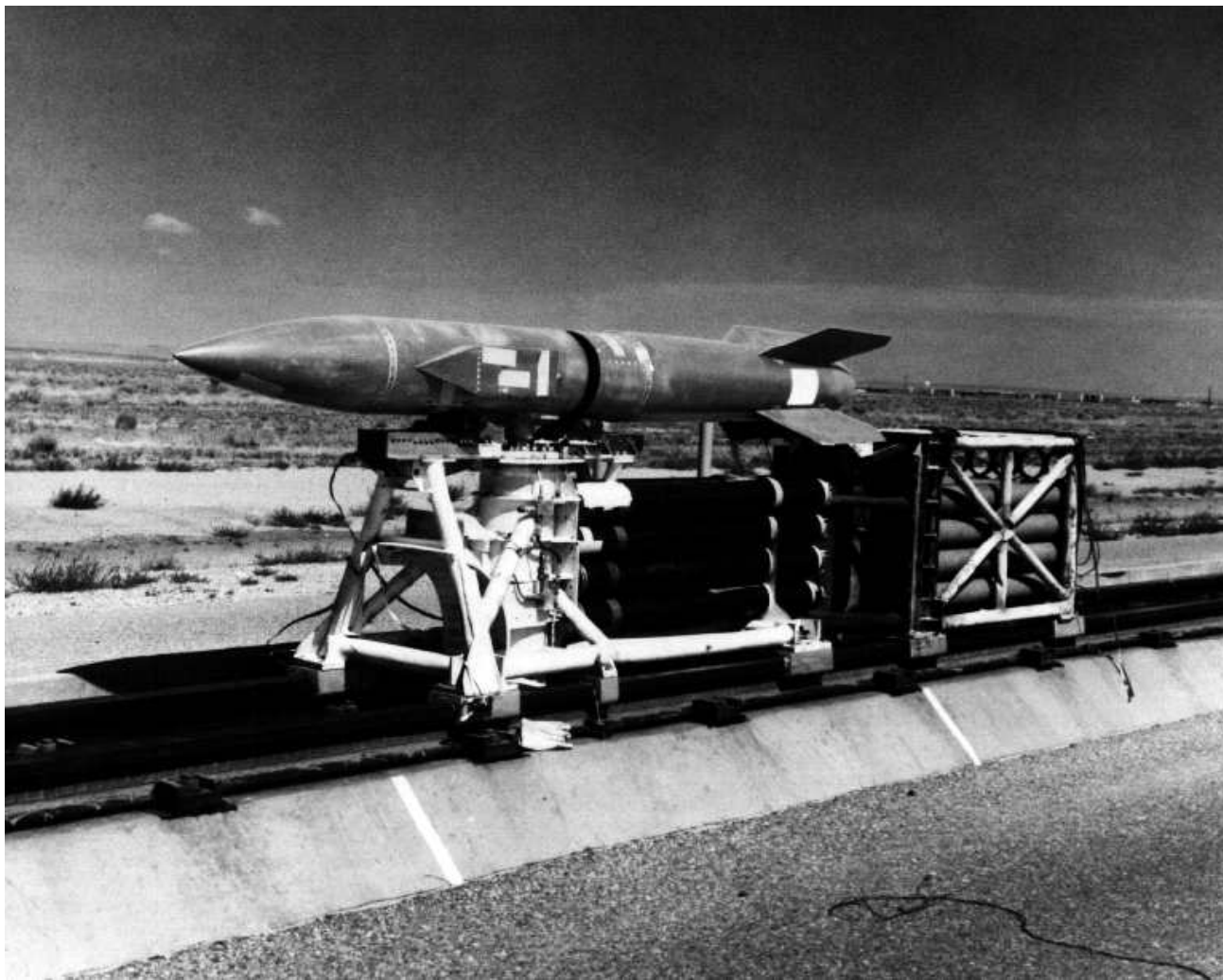
2000' Sled Track from Air



10000' Sled Track (1996)

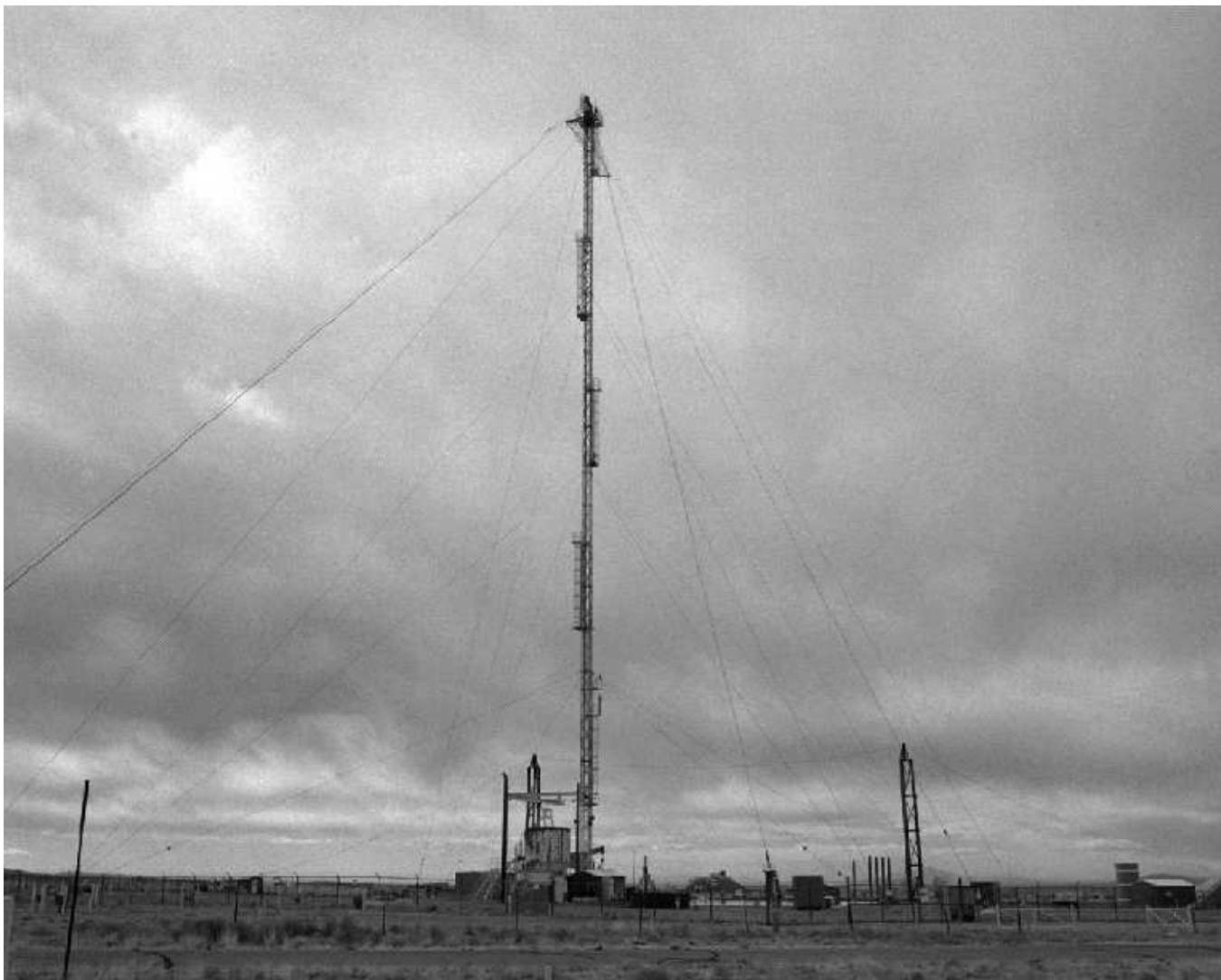


B61 Mod Test on 10000' Sled Track (1976)

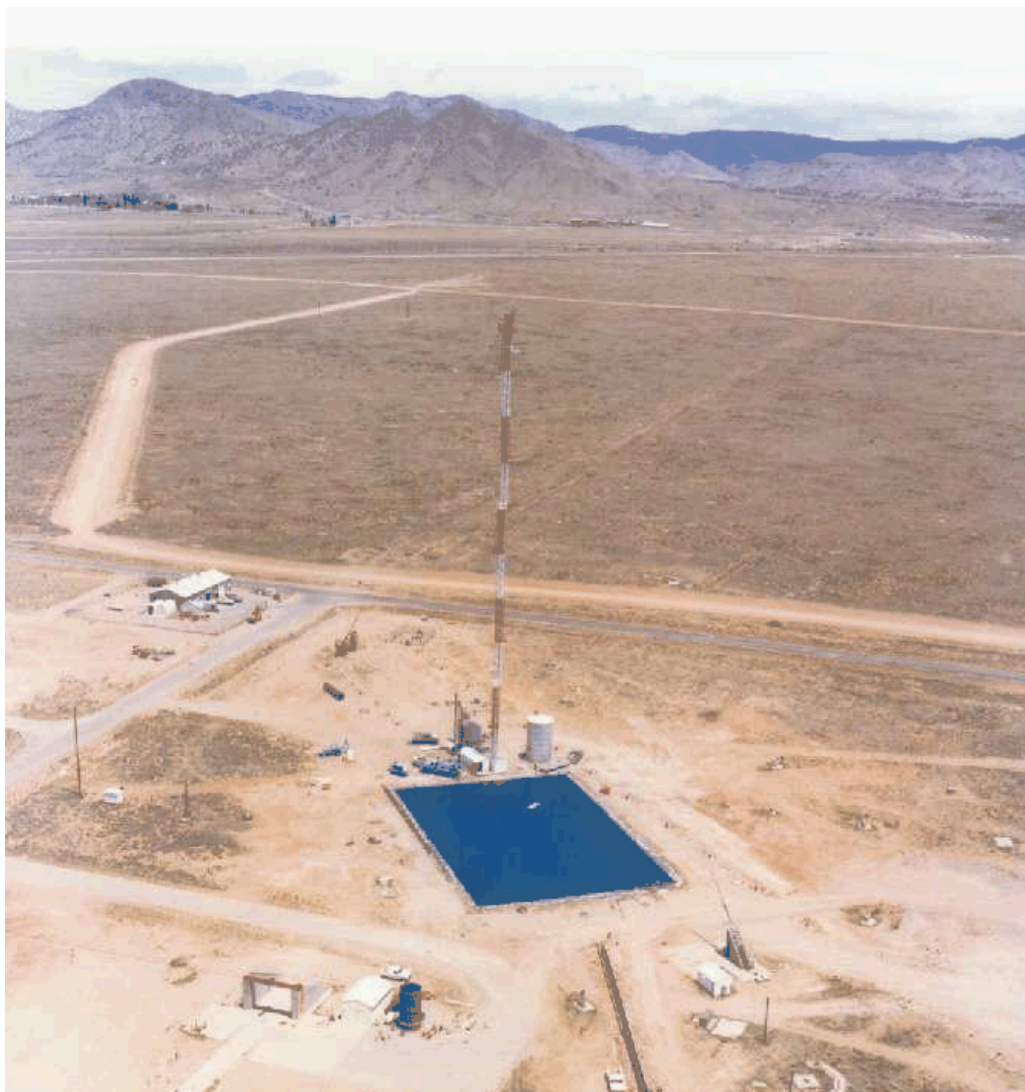




Drop Towers



300' Drop Tower with Water Impact Facility



Water Impact Facility

