

# Examination of the Integumentary System and Mammary Gland

SAND2011-4106C



Sandia is a multiprogram laboratory operated by Sandia Corporation, a Lockheed Martin Company,  
for the United States Department of Energy's National Nuclear Security Administration  
under contract DE-AC04-94AL85000.

SAND # 2011-4001 C





# Examination from Afar: Integumentary System

- **Information collected during an examination from a distance**

- General body condition
- Pruritus
  - **Distribution**
- Alopecia
- External lesions
  - **Erosions**
  - **Nodules**
  - **Pustules**
- Lameness

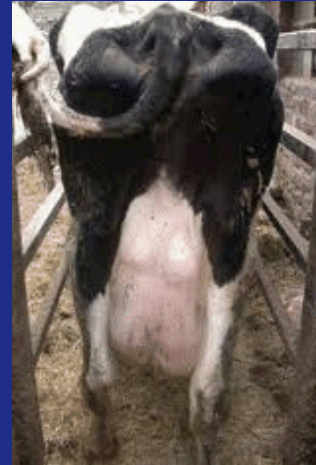




# Examination from Afar: Mammary Gland

- **Information collected during an examination from a distance**

- General body condition
- Mentation
- Respiratory rate
- Udder confirmation
- Redness of the mammary gland
- Mammary gland lesions
- Mammary gland symmetry
- Distention





# Collecting a Meaningful History: Integumentary System

- **Historical information related to the evaluation of the genitourinary system**
  - Duration of illness
  - Pruritus
  - Alopecia
  - Skin lesions
  - Vaccinations
  - Previous treatments
- **Historical information related to the herd**
  - Other animals affected
  - Duration and similarities of signs
  - Deaths associated with the illness
  - Changes in food and/or water
  - New additions to the herd



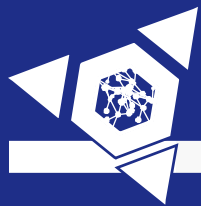


# Collecting a Meaningful History: Udder

- **Historical information related to the evaluation of the genitourinary system**
  - Duration of illness
  - Date of calving
  - Milk production
  - Nursing history
  - History of mastitis
  - Food/water consumption
  - Vaccinations
  - Previous treatments
- **Historical information related to the herd**
  - Other animals affected
  - Duration of signs
  - Similarity of signs
  - Deaths associated with the illness
  - Changes in food and/or water
  - New additions to the herd



# Examination: Integumentary System



- **Mucous membranes**

- Color
- Ulceration

- **Skin examination**

- Crusts
- Pustules
- Nodules
- Erosions
- Vesicles
- Wheals

- **Hoof**

- Interdigital space
- Heels
- Coronary band

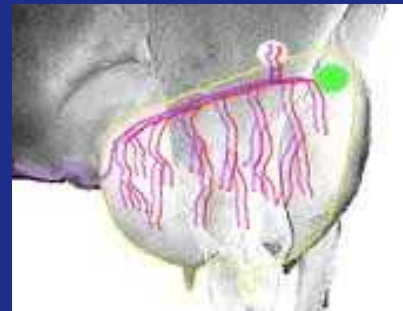
- **Lymph nodes palpation**





# Examination: Udder

- **Udder palpation**
  - Heat
  - Consistency
  - Induration
  - Symmetry
- **Palpate lymph nodes**
- **Teat exam**
  - Erosions
  - Abrasions
- **Milk evaluation**
  - Clean udder prior to sampling
  - Consistency
  - Color
  - California mastitis test





# Interpretation of Results: Genitourinary System

- **Abnormal findings: Integumentary system**
- **Abnormal findings: Udder**



# Ancillary Tests: Integumentary System and Udder

- **Skin scrape**
- **Biopsy**
- **Microbiology**
- **Response to treatment**
  
- **California mastitis test**
- **Microbiology**
- **Ultrasound examination**