

Examination of the Genitourinary System



Sandia is a multiprogram laboratory operated by Sandia Corporation, a Lockheed Martin Company,
for the United States Department of Energy's National Nuclear Security Administration
under contract DE-AC04-94AL85000.

SAND # 2011-4001 C





Examination from Afar: Genitourinary System

- **Information collected during an examination from a distance**

- General body condition
- Posture
 - **Urination**
- Gender
- Age
- Vaginal/urethral discharge
- Prepuce
- Edema
- Abdominal contour – pregnancy
- Accompanying calf
- Urination
- Abnormal odors

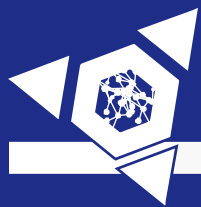




Collecting a Meaningful History: Genitourinary System Females

- **Historical information related to the evaluation of the genitourinary system**
 - Duration of illness
 - Ease and frequency of urination
 - Reproductive history
 - Pregnancy
 - Calves produced
 - Calving history
 - Normal, abortions, postpartum complications
 - Milk production
 - Food/water consumption
 - Vaccinations
 - Previous treatments
- **Historical information related to the herd**
 - Other animals affected
 - Duration and similarities of signs
 - Deaths associated with the illness
 - Changes in food and/or water
 - New additions to the herd





Collecting a Meaningful History: Genitourinary System Males

- **Historical information related to the evaluation of the genitourinary system**
 - Duration of illness
 - Castration
 - **Approximate age at castration**
 - Ease and frequency of urination
 - Reproductive history if relevant
 - Food/water consumption
 - Vaccinations
 - Previous treatments
- **Historical information related to the herd**
 - Other animals affected
 - Duration of signs
 - Similarity of signs
 - Deaths associated with the illness
 - Changes in food and/or water
 - New additions to the herd



Examination: Genitourinary System Females



- **Mucous membranes**

- Color
- Ulceration

- **Vulva/vaginal wall**

- Discharge
- Erosions
- Color

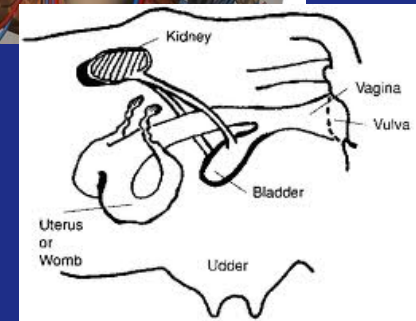
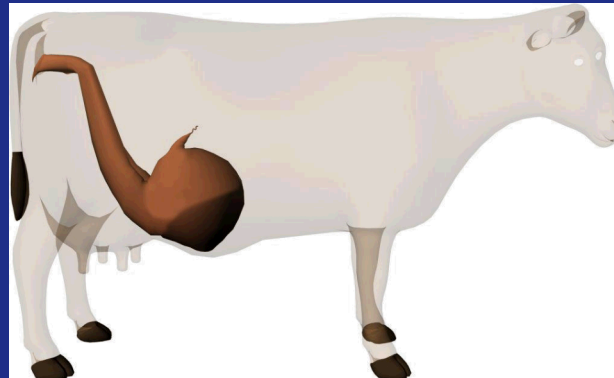
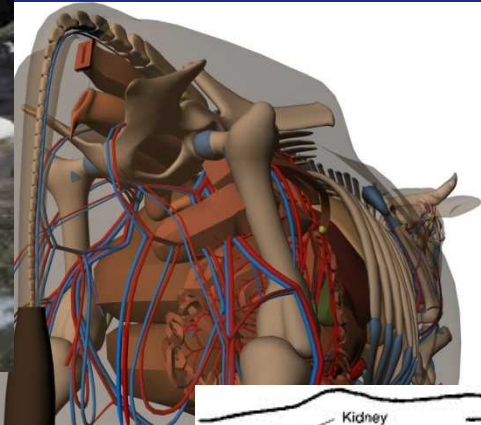
- **Abdominal palpation – small ruminants**

- Bladder

- **Rectal palpation**

- Kidney
- Reproductive tract
- Bladder

- **Urine collection**



Examination: Genitourinary System

Males



- **Abdominal palpation – small ruminants**

- Palpate bladder

- **Palpation of ventral abdomen**

- **Prepuce**

- Discharge
- Swelling

- **Penis**

- Lesions
- Malformations

- **Rectal palpation**

- Bladder
- Kidney
- Seminal vesicles

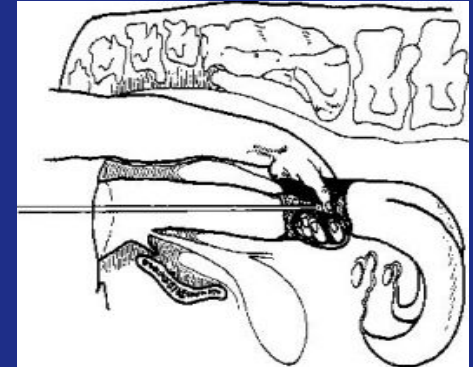
- **Fertility examination**





Artificial Insemination

- **Considerations**
 - Sire selection
 - Desired traits
- **Synchronization of estrus**
- **Detection of estrus**
- **Tools required**
- **Semen handling**
- **Insemination techniques**
- **Complications**





Interpretation of Results: Genitourinary System

- **Abnormal findings: Genitourinary system - females**
- **Abnormal findings: Genitourinary system - males**



Ancillary Tests: Genitourinary System

- **Urinalysis**
- **Ultrasound examination**
- **Endoscopy**
- **Radiography**
- **Microbiology**
- **Hematology**
- **Semen evaluation**

