

Overview of the Atoms-to-Continuum Package for LAMMPS

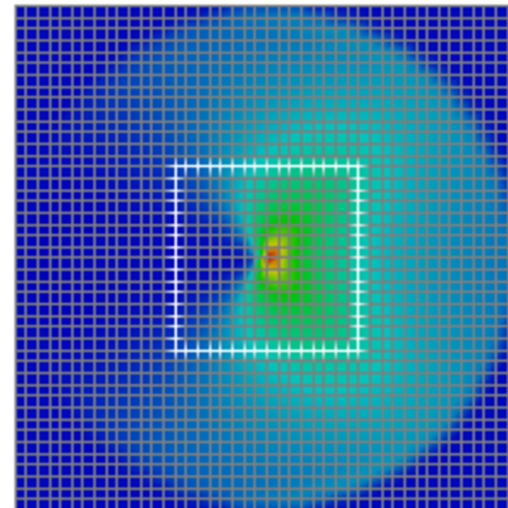
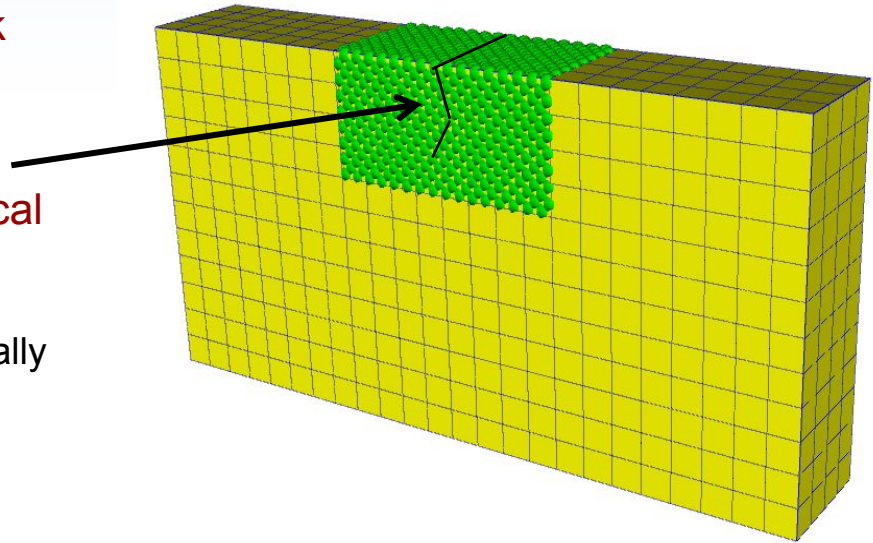
Reese Jones, Jeremy Templeton, and Jonathan Zimmerman

Rich Lehoucq, Jonathan Lee, David Olmsted, Mike Parks, Greg Wagner, and
Bryan Wong

Second (annual?) LAMMPS Users Workshop
Albuquerque NM
August 2011

Motivation

- Provide a unified computational framework for finite element (FE) and an molecular dynamics (MD) for problems in which atomistic description of material is needed only for a localized region and the dynamical interactions between the FE and MD are important for understanding the system
 - MD cost to simulate entire system atomistically would be prohibitive
 - Dual Statement: FE constitutive models are not of sufficient fidelity for all of the system
- Apply boundary conditions and sources to MD to enable engineering simulation of nanosystems analogous to FE analysis
- Enhance MD with multiphysics capabilities mediated by a FE model
 - Electron transport effects augmenting classical MD
 - Electric field modeling for long-range interactions
- **Learn something!**
 - On-the-fly Hardy post-processing



Getting Started with the atc Package

- The atc package is a standard user package in LAMMPS
- It is built as a library from the `/USER/atc` directory
- Several example makefiles are included
 - We have built and tested on various flavors of Linux and MacOS
- You will need to have the blas and lapack libraries installed to support the matrix operations used by the code
- In the LAMMPS `src` directory type `make yes-atc` to link with the package
 - The `Makefile.user` should then have the appropriate libraries for linking
- The standard LAMMPS makefiles will work without modification
- See `/USER/atc/README` for more information
- Now you're ready to do some damage!



The atc fix

fix ID groupID atc type paramfile

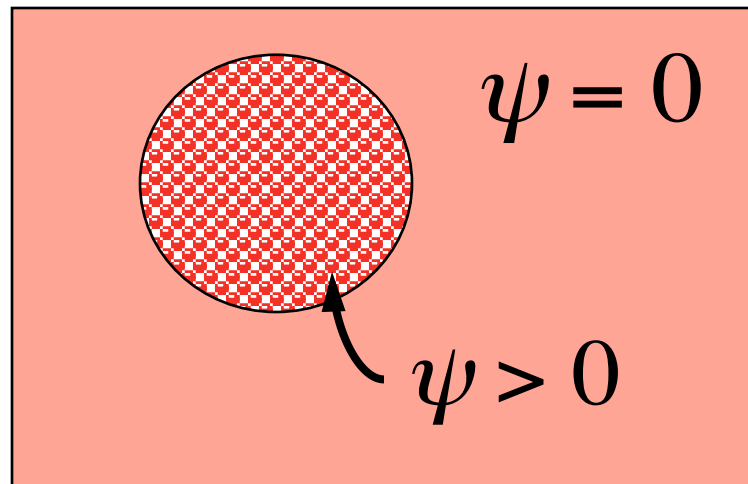
- **ID, groupID documented in the fix command**
 - In coupled simulations, groupID is for the internal atoms (but we'll get to that)
- **type = thermal or two_temperature or hardy**
 - **thermal** = coupling atoms with a finite element temperature field for multiscale modeling or applying boundary conditions
 - **two_temperature** = coupling atoms with a finite element electron temperature field for energy exchange
 - Also allows all capabilities of thermal
 - Distinct from fix ttm by P. Crozier
 - **hardy** = Hardy on-the-fly post-processing of atomistic quantities to a continuum field
- **paramfile = file with FE material parameters**
 - Not specified for hardy
 - Values not used for boundary condition problems

Hardy On-The-Fly Post-Processing

$$\boldsymbol{\sigma}(\mathbf{x}, t) = - \left\{ \frac{1}{2} \sum_{\alpha=1}^N \sum_{\beta \neq \alpha}^N \mathbf{x}^{\alpha\beta} \otimes \mathbf{f}^{\alpha\beta} B^{\alpha\beta}(\mathbf{x}) + \sum_{\alpha=1}^N m^{\alpha} \hat{\mathbf{v}}^{\alpha} \otimes \hat{\mathbf{v}}^{\alpha} \psi(\mathbf{x}^{\alpha} - \mathbf{x}) \right\}$$

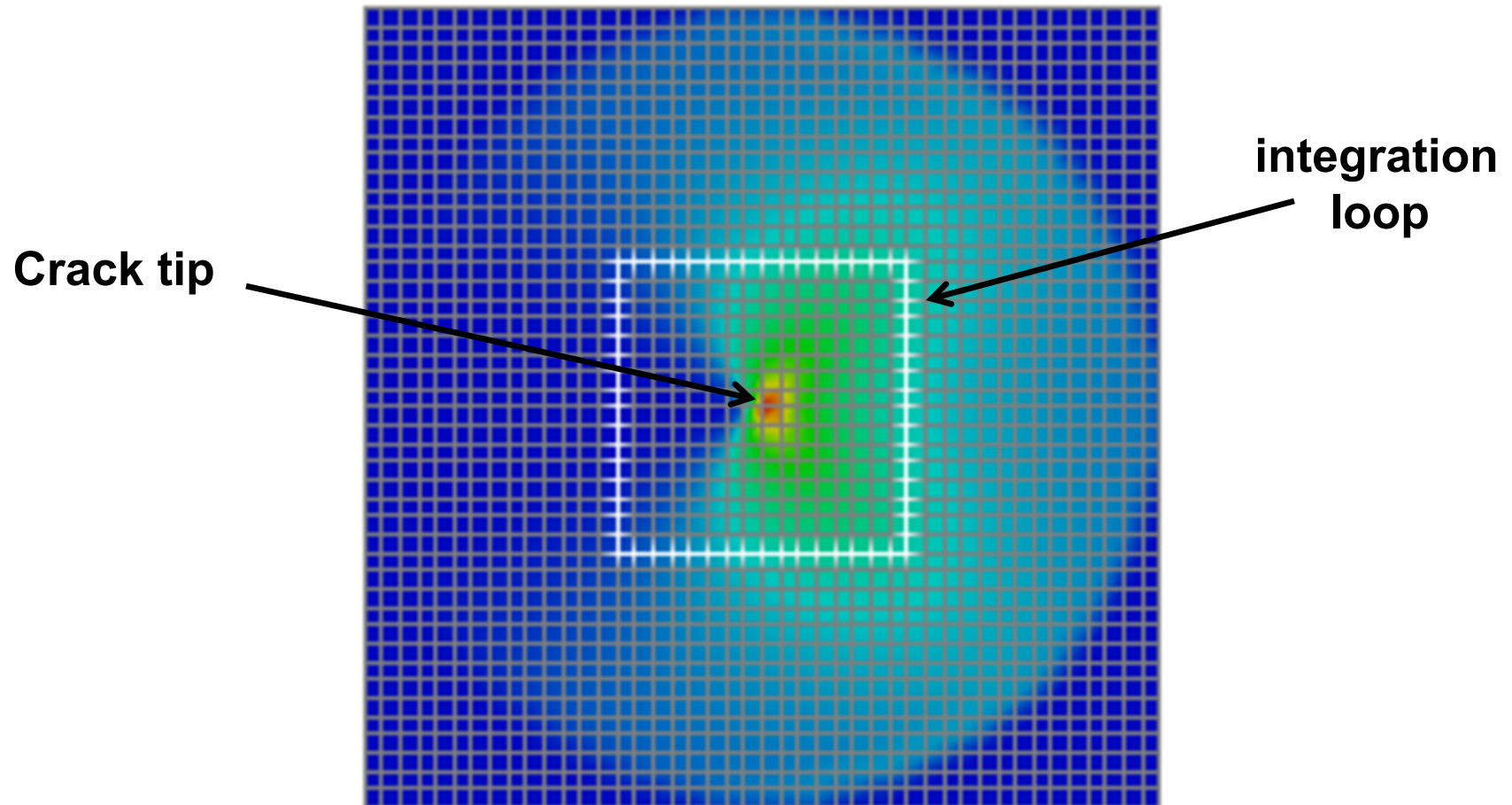
$$\mathbf{P}(\mathbf{X}, t) = - \frac{1}{2} \sum_{\alpha=1}^N \sum_{\beta \neq \alpha}^N \mathbf{f}^{\alpha\beta} \otimes \mathbf{X}^{\alpha\beta} B^{\alpha\beta}(\mathbf{X})$$

$$\mathbf{q}(\mathbf{x}, t) = - \sum_{\alpha=1}^N \sum_{\beta \neq \alpha}^N \frac{\mathbf{x}^{\alpha\beta}}{x^{\alpha\beta}} \frac{\partial \phi_{\beta}}{\partial x^{\alpha\beta}} (\mathbf{x}^{\alpha\beta} \cdot \hat{\mathbf{v}}^{\alpha}) B^{\alpha\beta}(\mathbf{x}) + \sum_{\alpha=1}^N \left\{ \frac{1}{2} m^{\alpha} (\hat{v}^{\alpha})^2 + \phi^{\alpha} \right\} \hat{\mathbf{v}}^{\alpha} \psi(\mathbf{x}^{\alpha} - \mathbf{x})$$



Example 1: Hardy Post-Processing

- **Objective:** calculate the Eshelby stress over various loops surrounding a crack tip



Example 1: Hardy Post-Processing

```
# ...instantiate the atc fix
region      SYSTEM block -10 10 -10 10 0 3
group       internal region SYSTEM
fix         AtC internal atc hardy
fix_modify  AtC mesh create 10 10 1 box p f p
fix_modify  AtC transfer fields none
fix_modify  AtC transfer fields add density energy
              temperature stress displacement
fix_modify  AtC fields add eshelby_stress
              transformed_stress
fix_modify  AtC gradients add displacement
fix_modify  AtC set reference_potential_energy
fix_modify  AtC output eshelby_staticFE 1 text
              binary tensor_components
```

Example 1: Hardy Post-Processing

- Create integration loops surrounding the crack tip to compare the line integral invariants with theory

```
#... make concentric loops around the crack tip
fix_modify AtC mesh create_faceset loop0 box -6 0
           6 10 -INF INF outward

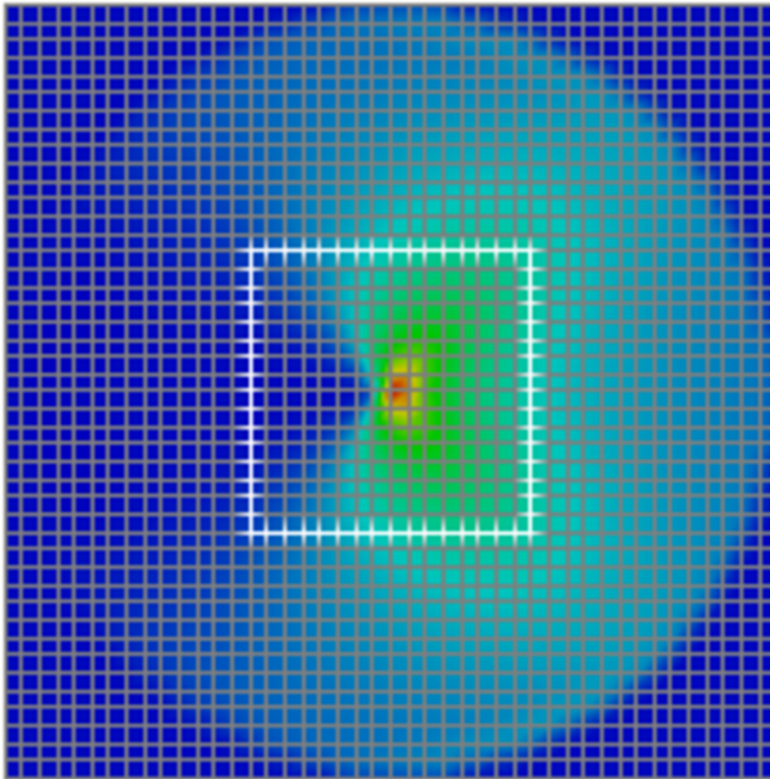
fix_modify AtC boundary_integral eshelby_stress
           faceset loop0

fix_modify AtC boundary_integral stress
           faceset loop0

fix_modify AtC boundary_integral energy
           faceset loop0

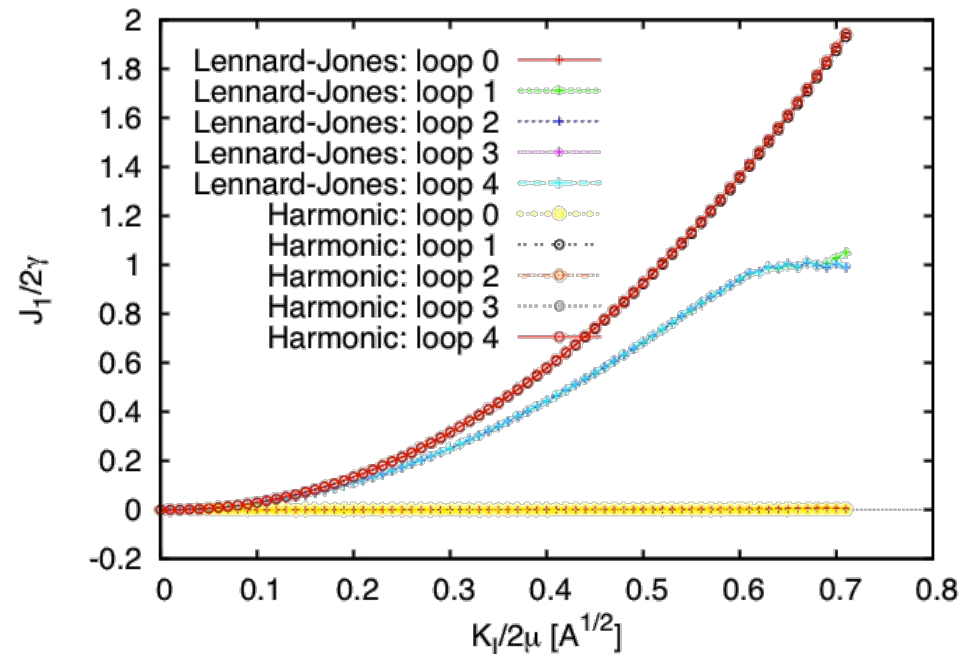
#... define other loops
#... run minimization steps
```

Example 1: Hardy Post-Processing



Coarse-grained atomic stress field

J-integral values over various contours



Common `fix_modify` commands for hardy

- Setup

- `fix_modify AtC mesh create`
- `fix_modify AtC transfer internal`

- Control and time filtering

- `fix_modify AtC transfer filter`
- `fix_modify AtC transfer filter scale`
- `fix_modify AtC transfer atom_element_map`
- `fix_modify AtC transfer neighbor_reset_frequency`
- `fix_modify AtC transfer kernel`

- Output: text and case (Ensign, Paraview, etc.)

- `fix_modify AtC transfer output`
- `fix_modify AtC transfer atomic_output`
- `fix_modify AtC mesh output`

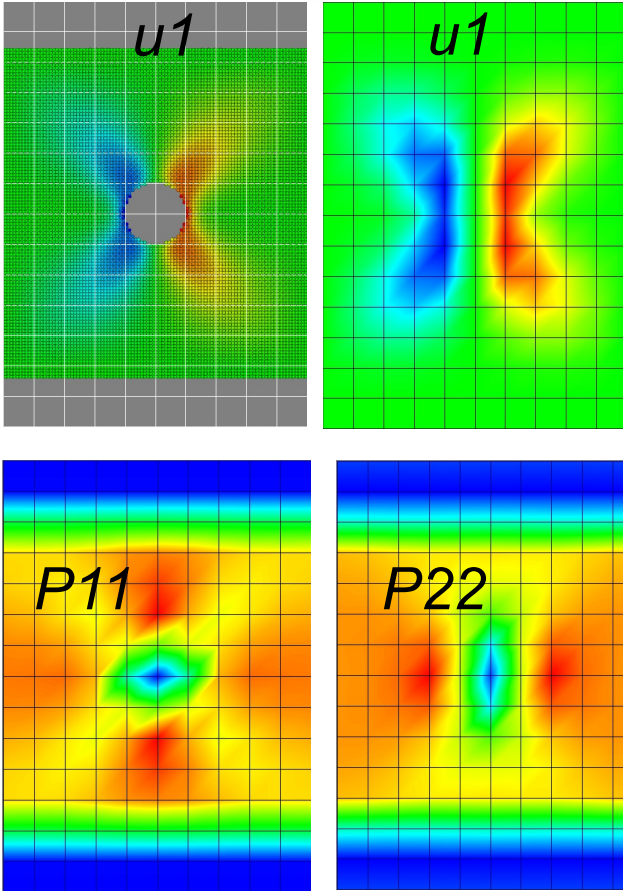
Common `fix_modify` commands for hardy

- Computation of fields

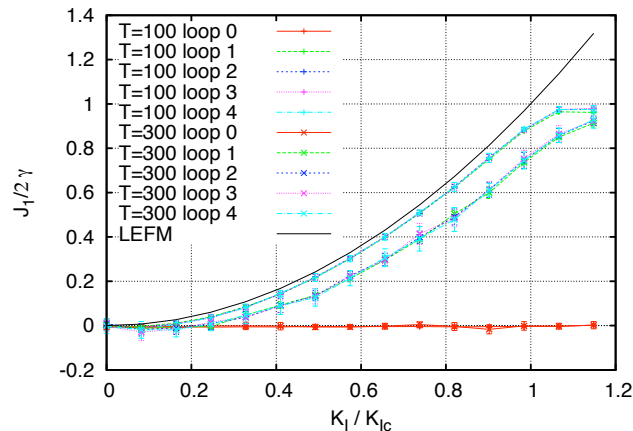
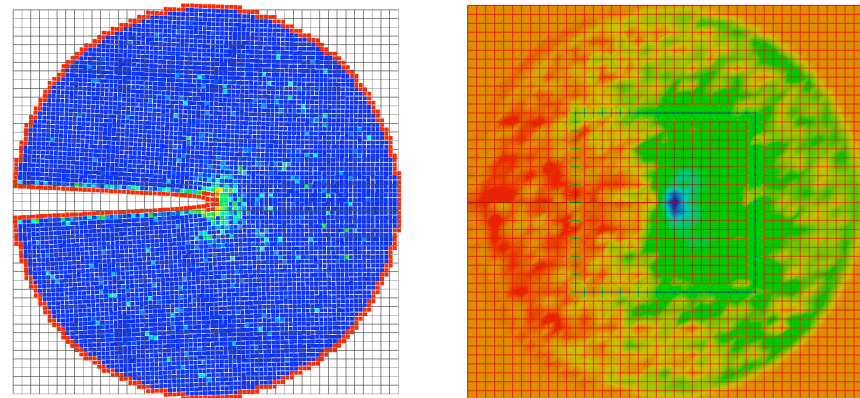
- `fix_modify AtC transfer fields`
- `fix_modify AtC transfer`
`gradients`
- `fix_modify AtC transfer rates`
- `fix_modify AtC transfer computes`
- `fix_modify AtC transfer`
`on_the_fly`
- `fix_modify AtC boundary_integral`
- `fix_modify AtC contour_integral`

Examples of Hardy Post-Processing

Tensile stretching of plate with circular hole



Compressive stress field for an atomic simulation of shock loading



Calculation of local values of atomic potential energy, Eshelby tensor, and J-integral at finite temperature

Thermal Coupling

- Result is set of coupled FEM/MD equations

$$\sum_J M_{IJ} \dot{\theta}_J = \sum_J K_{IJ} \theta_J + 2 \sum_{\alpha} N_{I\alpha} \mathbf{v}_{\alpha} \cdot \mathbf{f}_{\alpha}$$

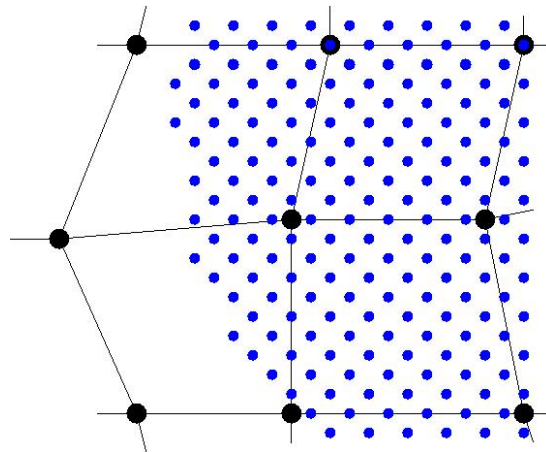
$$m_{\alpha} \dot{\mathbf{v}}_{\alpha} = \mathbf{f}_{\alpha}^{MD} - \frac{m_{\alpha}}{2} \sum_I N_{I\alpha} \lambda_I \mathbf{v}_{\alpha}$$

Coupling parameter
(temperature/flux constraint)

- Combined MD/FEM system has two-way coupling:



Atoms contribute to nodal heat equation



Heat at nodes affects MD energy through thermostat



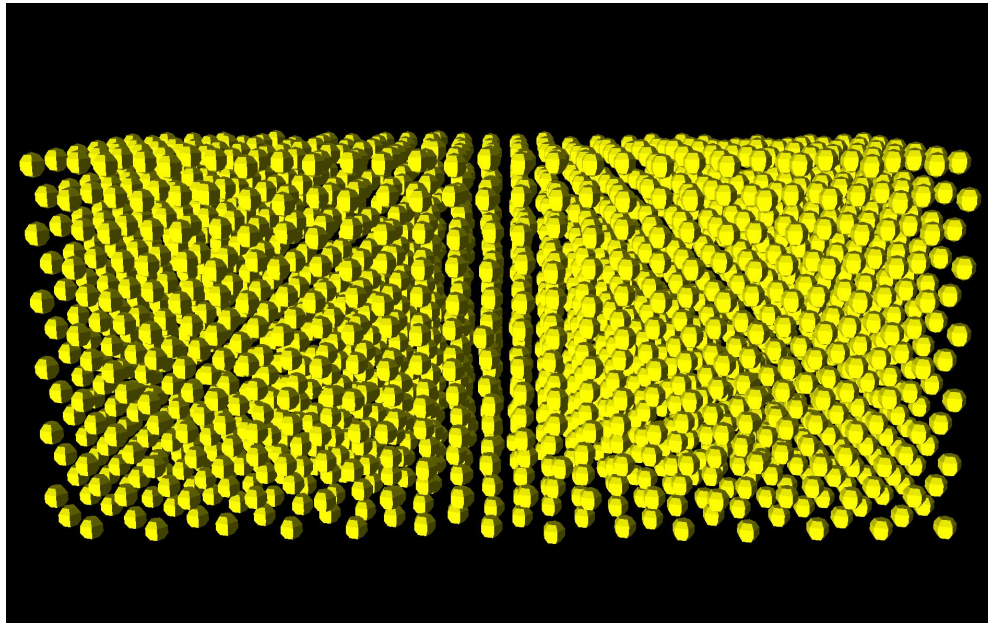
Example 2: Fixed Temperature Boundaries

- Goal: Compute the thermal conductivity of a specimen
- Set up the problem like a finite element model
 - 1) Mesh
 - Define the geometry of the problem
 - Specify fineness/coarseness of the discretization
 - 2) Initial Conditions
 - Starting state of the problem
 - Can be equilibrium or non-equilibrium
 - 3) Boundary conditions
 - Fixed temperature locations
 - Heat fluxes at each end
 - 4) Source terms
 - Energy added to the system at specific locations
 - 5) Time integration and numerical methods
 - Includes time filtering to smooth fluctuations

Example 2: Fixed Temperature Boundaries

- Instantiation of the AtC fix and creation of the mesh

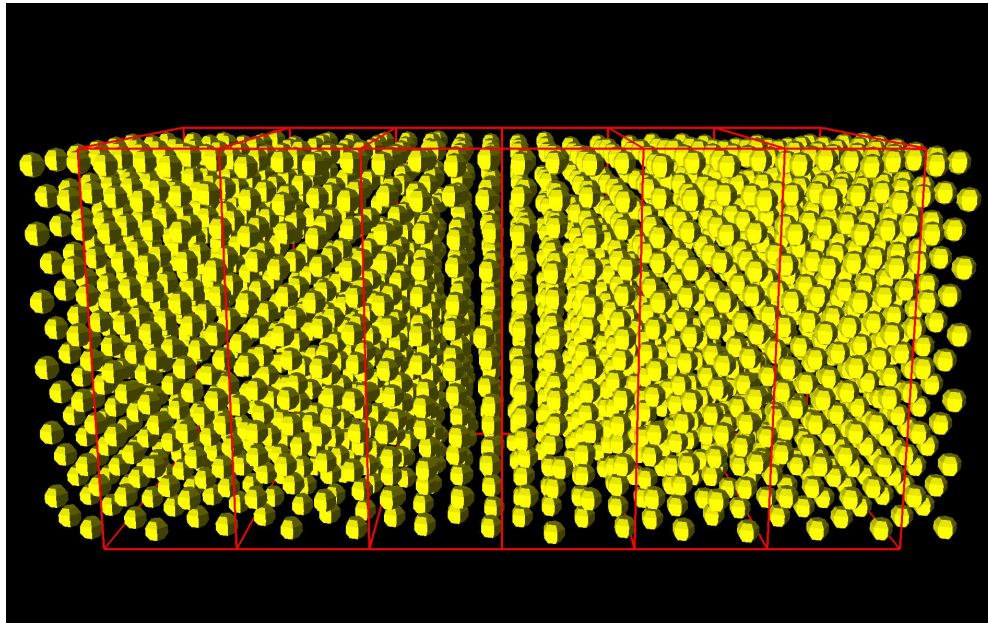
```
region      mdInternal block -6 6 -3 3 -3 3  
group      internal region mdInternal
```



Example 2: Fixed Temperature Boundaries

- Instantiation of the AtC fix and creation of the mesh

```
region      mdInternal block -6 6 -3 3 -3 3
group       internal region mdInternal
fix         AtC internal atc thermal Ar_thermal.mat
fix_modify  AtC mesh create 6 1 1 mdInternal f p p
```

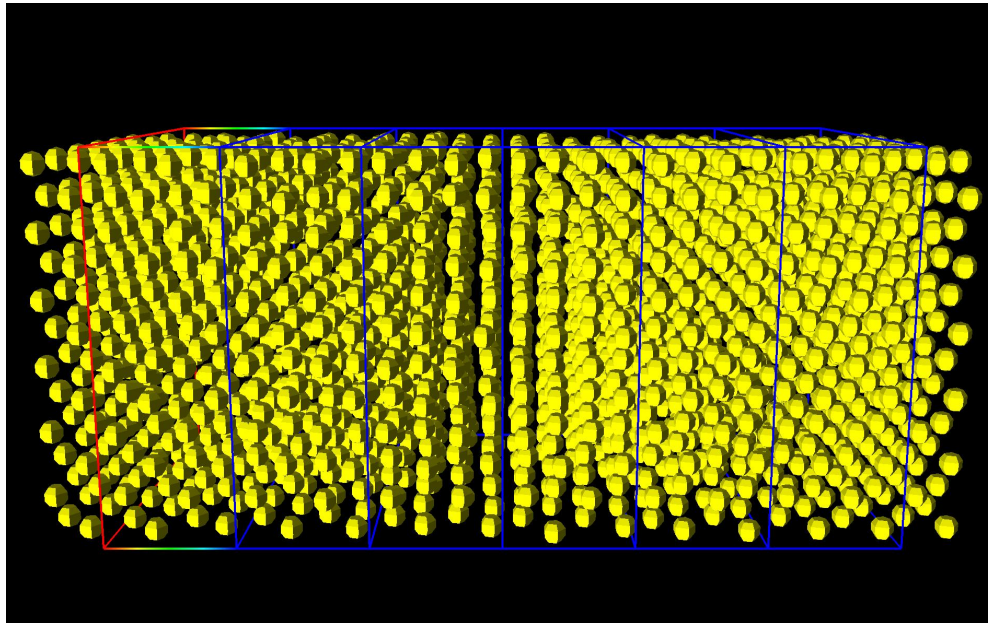


Example 2: Fixed Temperature Boundaries

- Add needed groups to the mesh

```
fix_modify AtC mesh create_faceset lbndy box -6.0  
16.0 -INF INF -INF INF outward
```

```
fix_modify AtC mesh create_nodeset lbc -6.1 -5.9  
-INF INF -INF INF
```



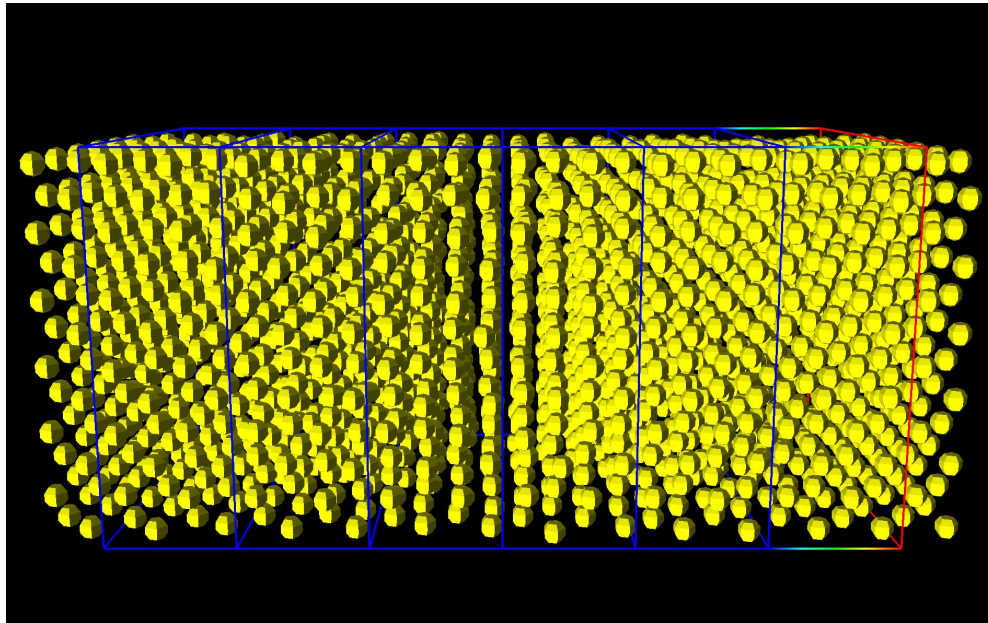
Example 2: Fixed Temperature Boundaries

- Add needed groups to the mesh

```
fix_modify AtC mesh create_faceset lbndy box -6.0  
16.0 -INF INF -INF INF outward
```

```
fix_modify AtC mesh create_nodeset lbc -6.1 -5.9  
-INF INF -INF INF
```

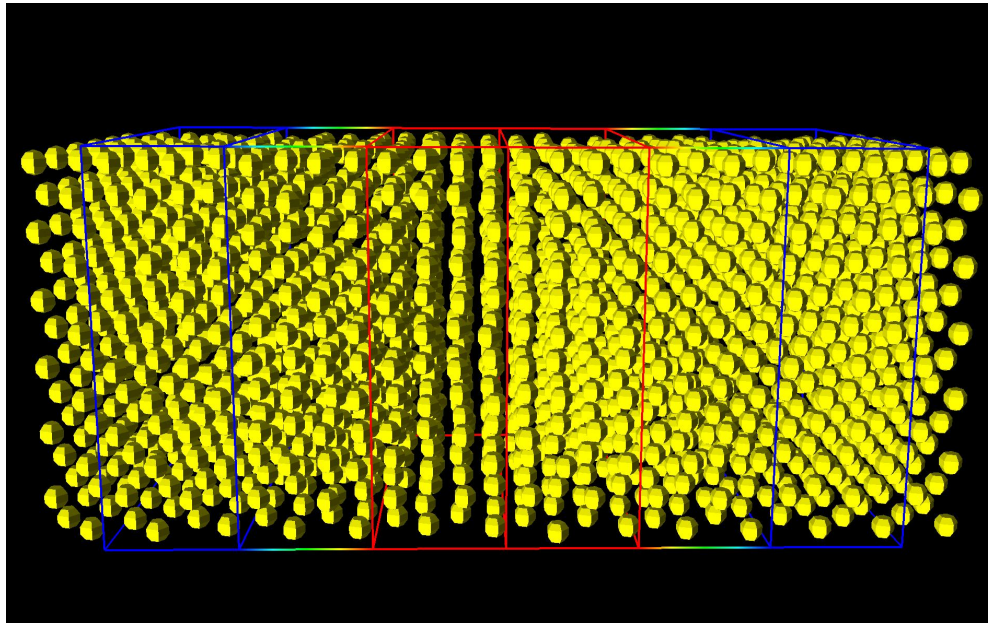
```
fix_modify AtC mesh create_nodeset rbc 5.9 6.1  
-INF INF -INF INF
```



Example 2: Fixed Temperature Boundaries

- Add needed groups to the mesh

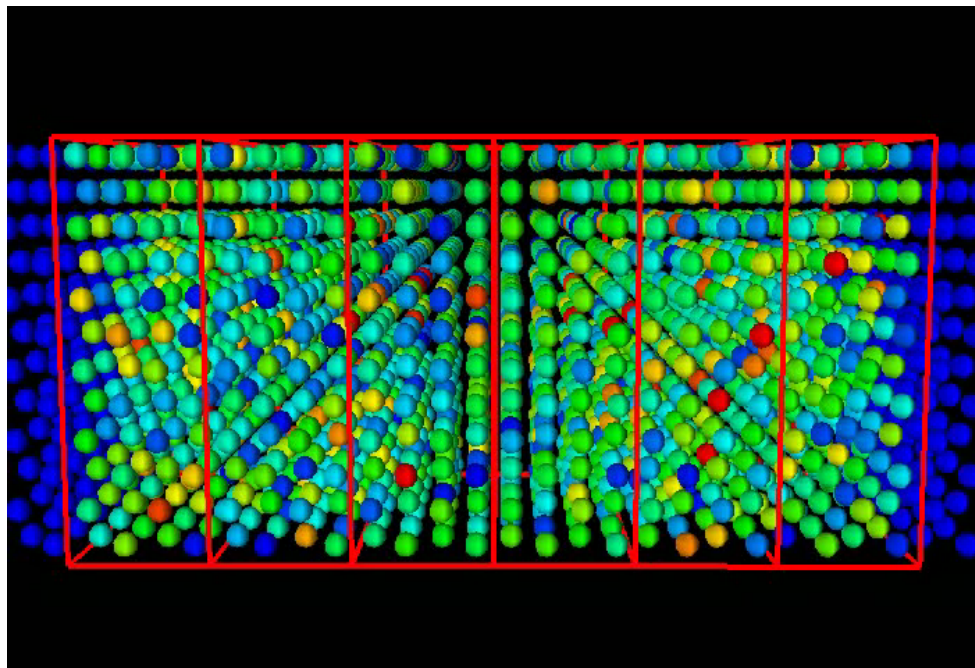
```
fix_modify AtC mesh create_faceset lbndy box -6.0  
16.0 -INF INF -INF INF outward  
fix_modify AtC mesh create_nodeset lbc -6.1 -5.9  
-INF INF -INF INF  
fix_modify AtC mesh create_nodeset rbc 5.9 6.1  
-INF INF -INF INF  
fix_modify AtC mesh create_elementset mid -2.1 2.1  
-INF INF -INF INF
```



Example 2: Fixed Temperature Boundaries

- Initial conditions set through a combination of LAMMPS and AtC commands to construct and equilibrate the lattice

```
velocity      internal create 40. 87287 mom yes  
fix_modify   AtC   fix temperature all 20.  
fix_modify   AtC   control thermal rescale 10  
fix_modify   AtC   output BCex_eqFE 100 text binary  
run 1000
```



Example 2: Fixed Temperature Boundaries

- Time integration, filtering, constitutive models and numerical methods

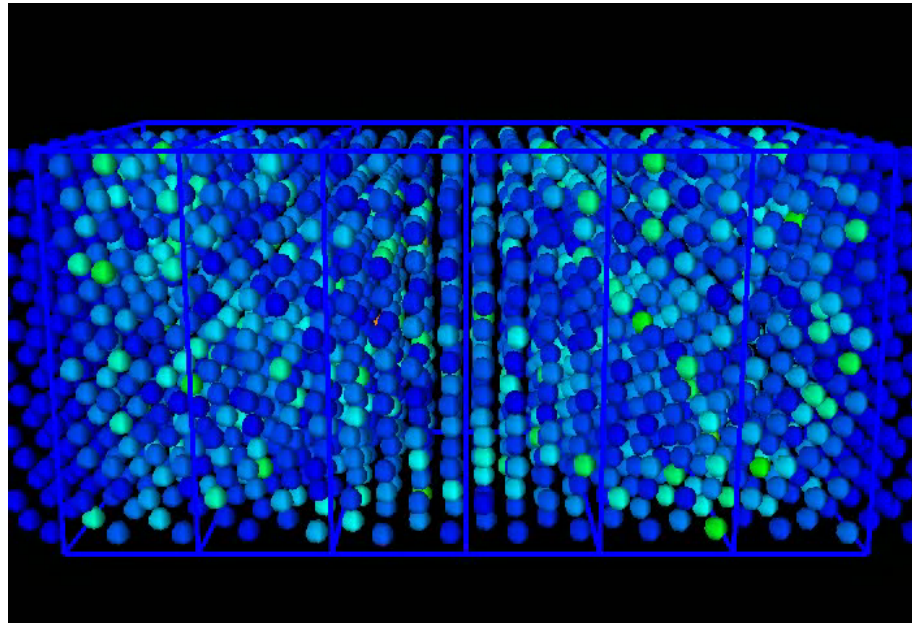
```
fix_modify      AtC  filter type exponential
fix_modify      AtC  filter scale 1000.0
fix_modify      AtC  filter on
fix_modify      AtC  internal_quadrature off
fix_modify      AtC  unfix temperature all
```

```
# Ar_thermal.mat file
material Ar
  heat_flux linear
    conductivity .000000000168
  end
end
```

Example 2: Fixed Temperature Boundaries

- Define boundary conditions on nodesets

```
fix_modify AtC    fix temperature lbc temporal_ramp  
                20. 40. 25000.  
fix_modify AtC    fix temperature rbc 20.  
fix_modify AtC    control thermal flux no_boundary  
reset_timestep    0  
fix_modify        AtC    reset_time  
run               10000
```

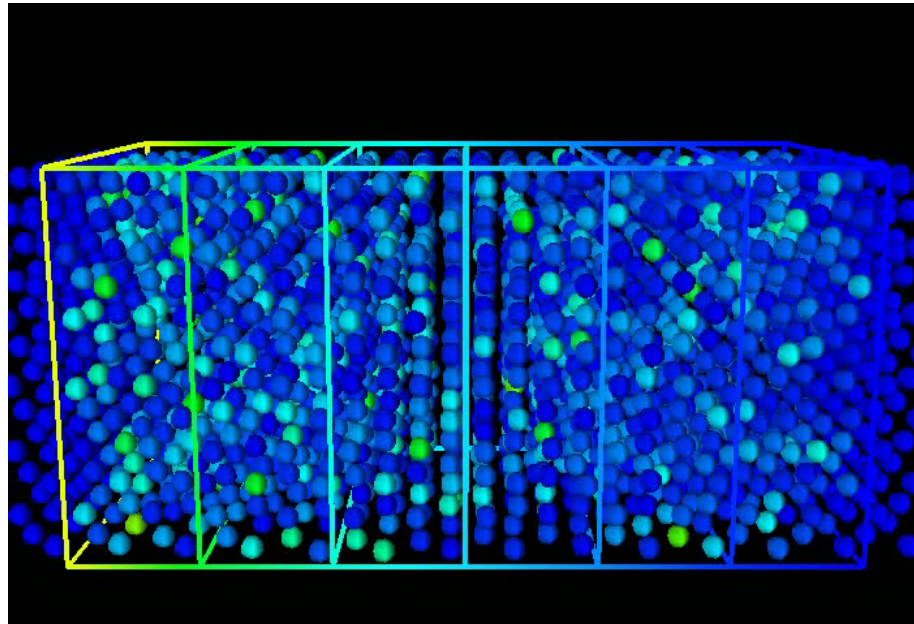


Example 2: Fixed Temperature Boundaries

- Apply source terms and boundary fluxes

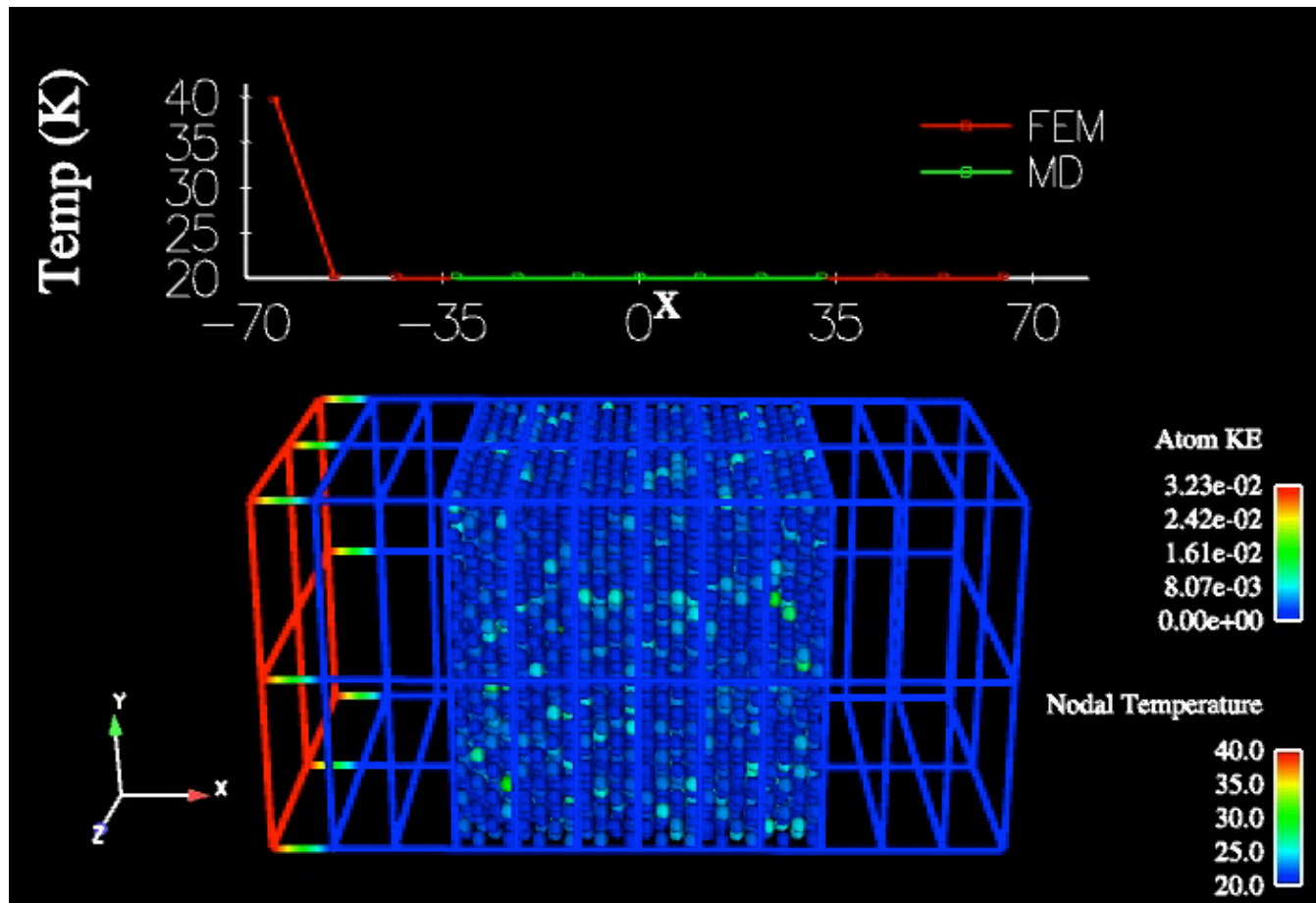
```
fix_modify AtC unfix temperature lbc
fix_modify AtC fix_flux temperature lbndy
0.0000000001

fix_modify AtC source temperature mid 0.0000000001
reset_timestep 0
fix_modify AtC reset_time
run 10000
```



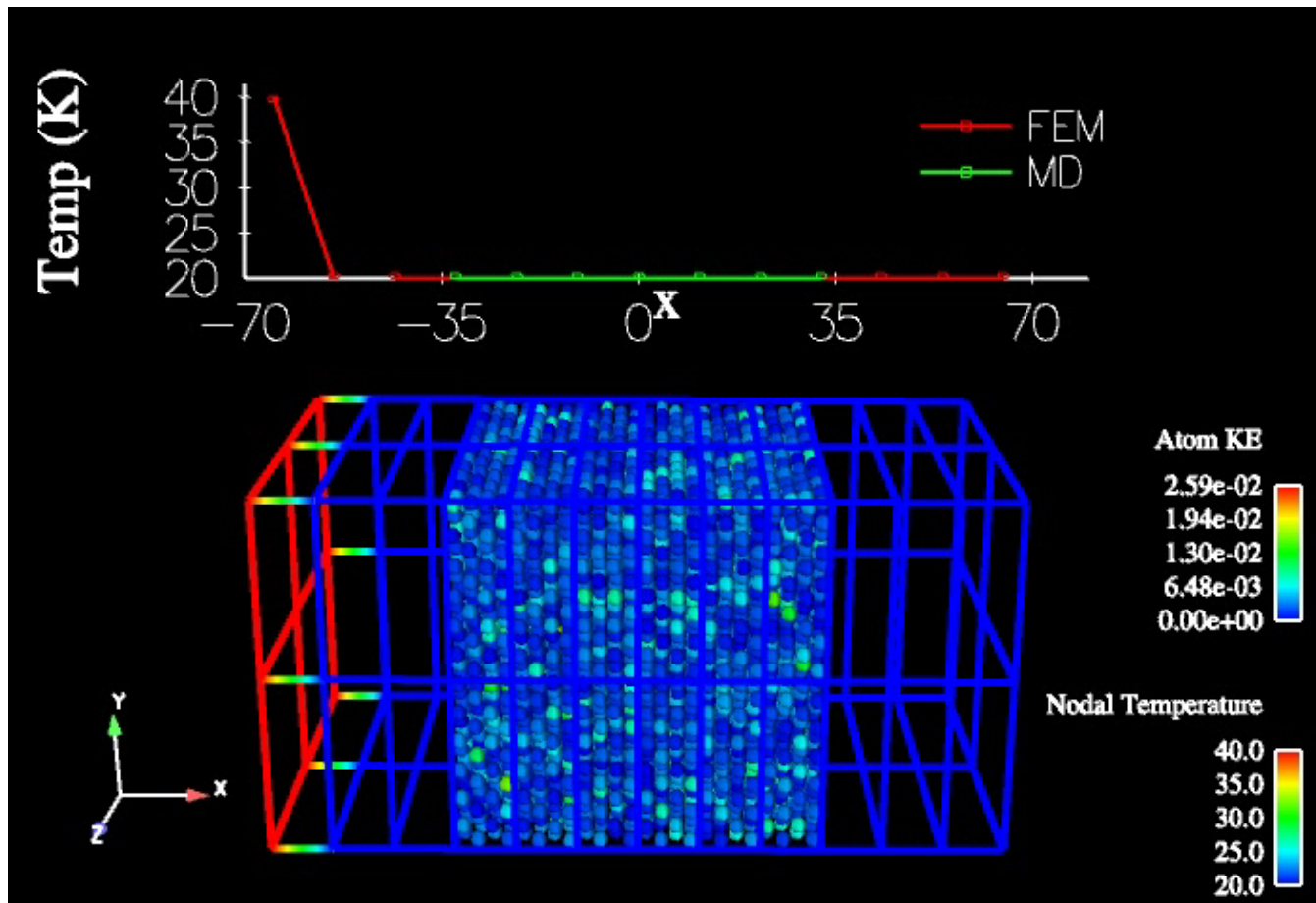
Coupled System

- 1D bar with embedded MD region (~7000 atoms)
- FEM nodes fixed hot/cold at left/right ends
- Temperature coupling method



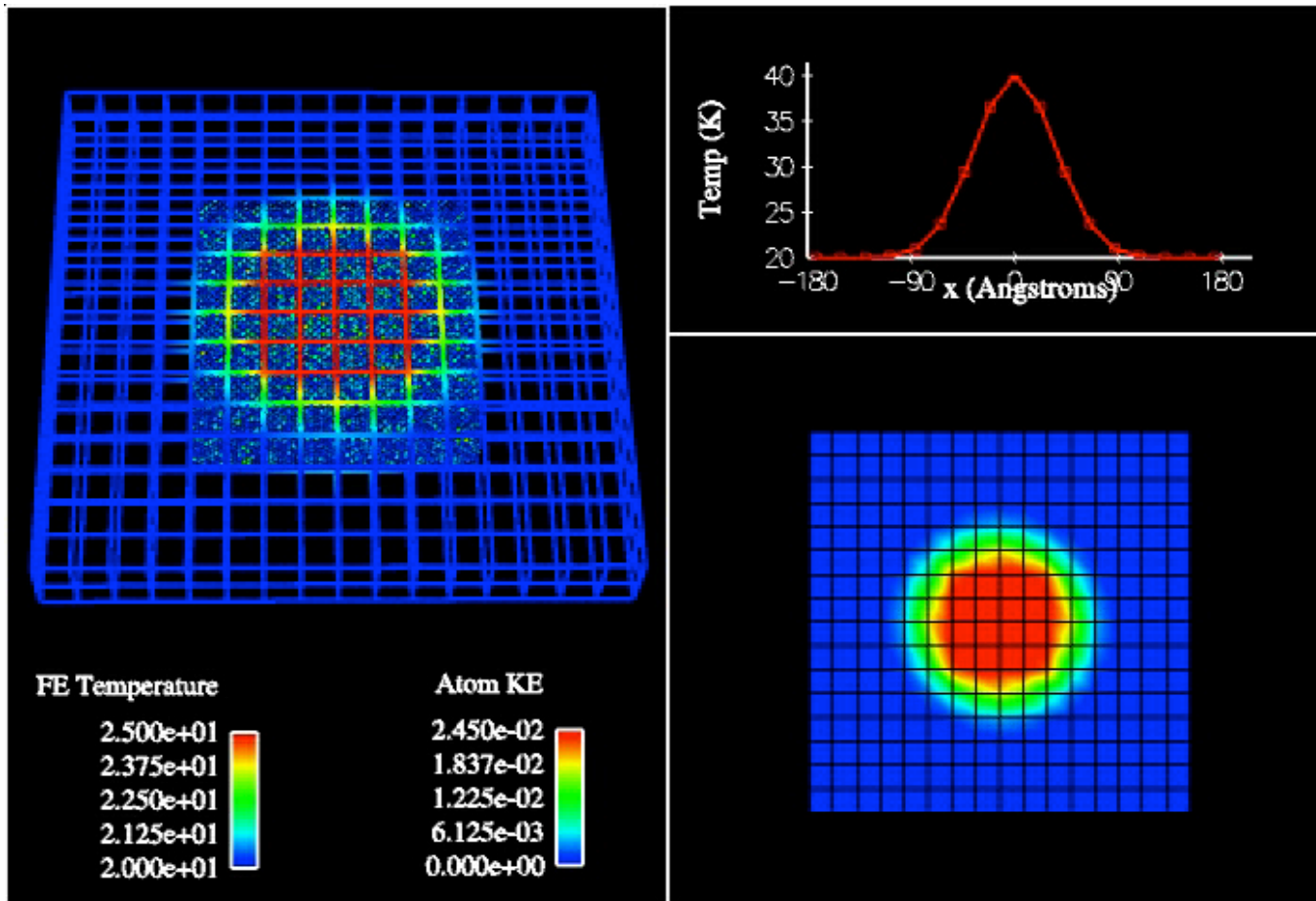
Coupled System

- 1D bar with embedded MD region (~7000 atoms)
- FEM nodes fixed hot/cold at left/right ends
- Flux coupling method



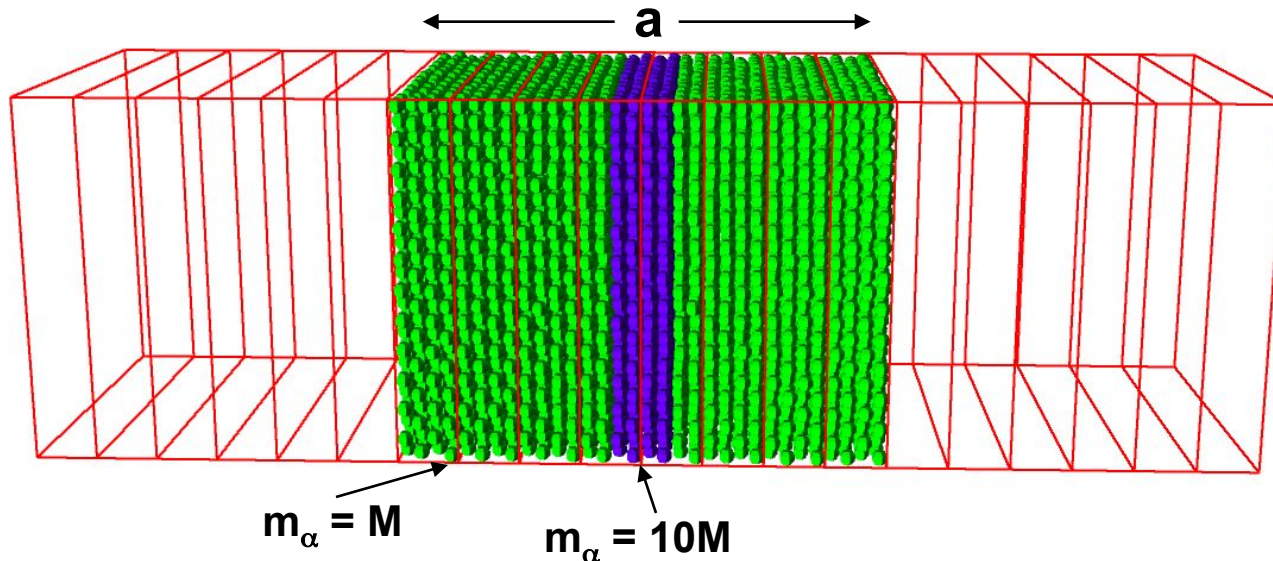
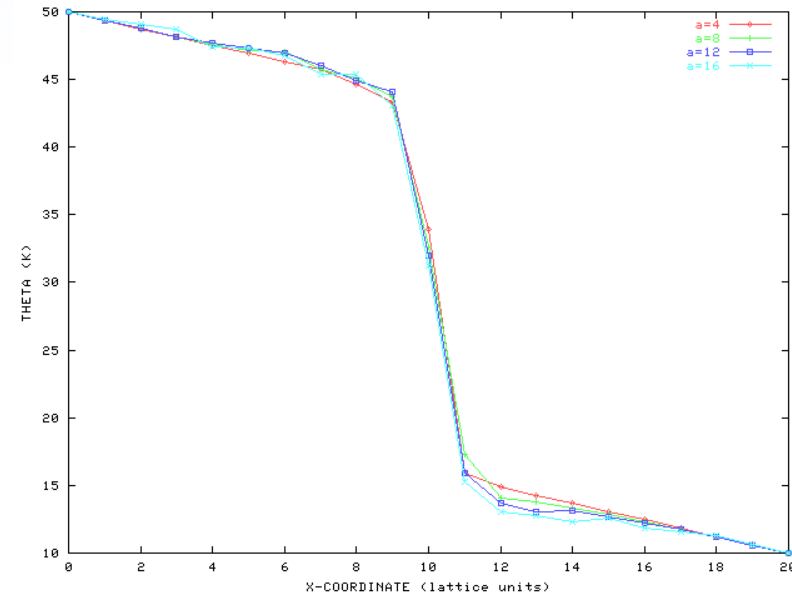
2D Diffusion Problem

- Plate with embedded MD region (~33,000 atoms)
- Initialized to temperature field with gaussian profile
- Adiabatic boundary conditions at edges

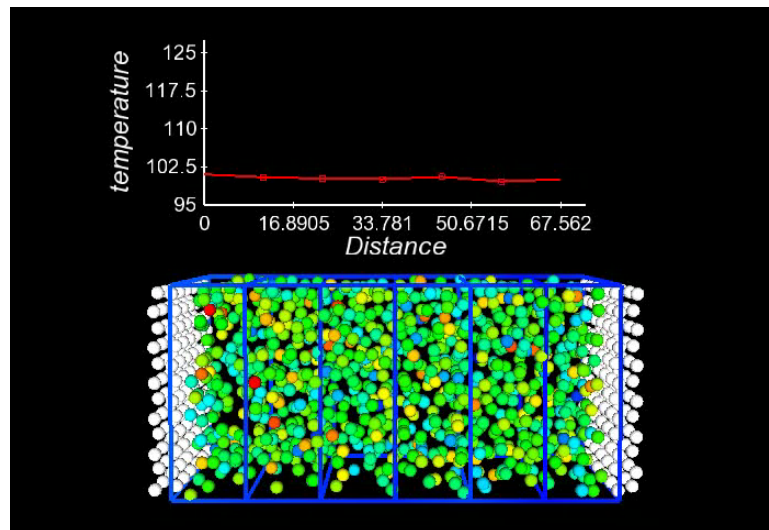
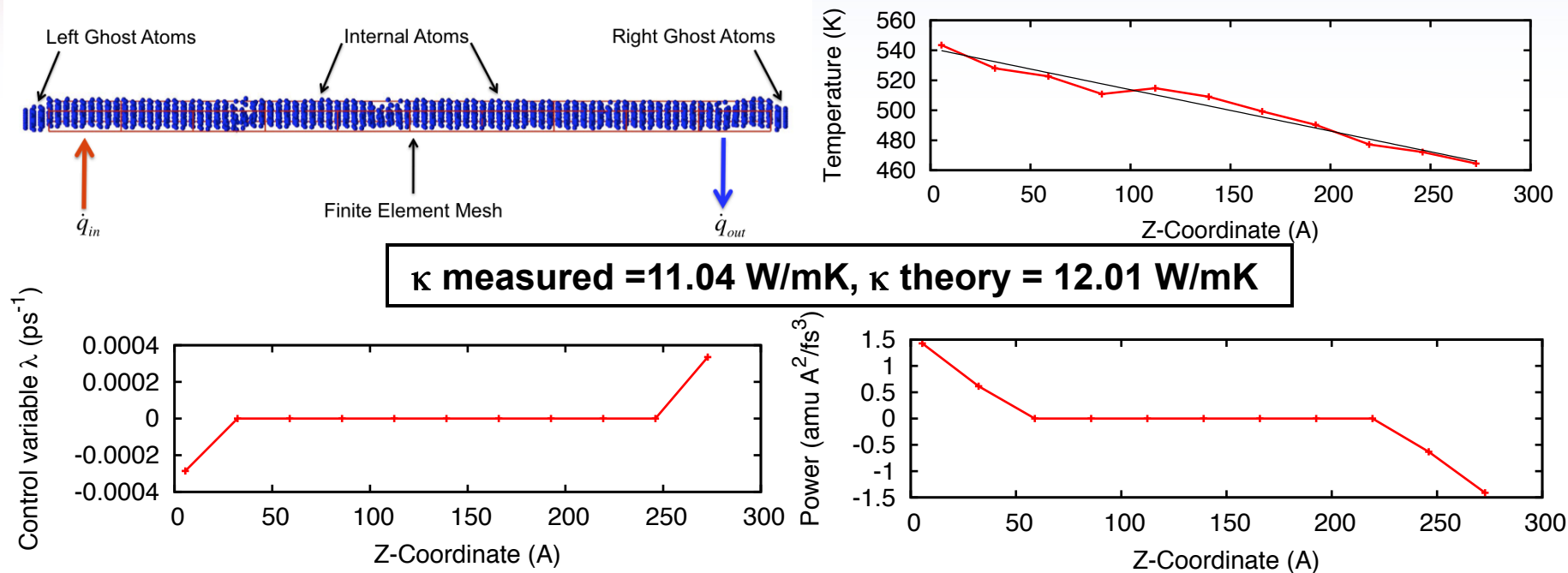


Effects of Imperfections on Conductivity

- Center layers of atoms given 10x mass of surroundings
 - Acoustic mismatch leads to inherent resistance in center layer
- Results are fairly insensitive to size of MD region



Thermal Conductivity Calculations using AtC Boundary Conditions

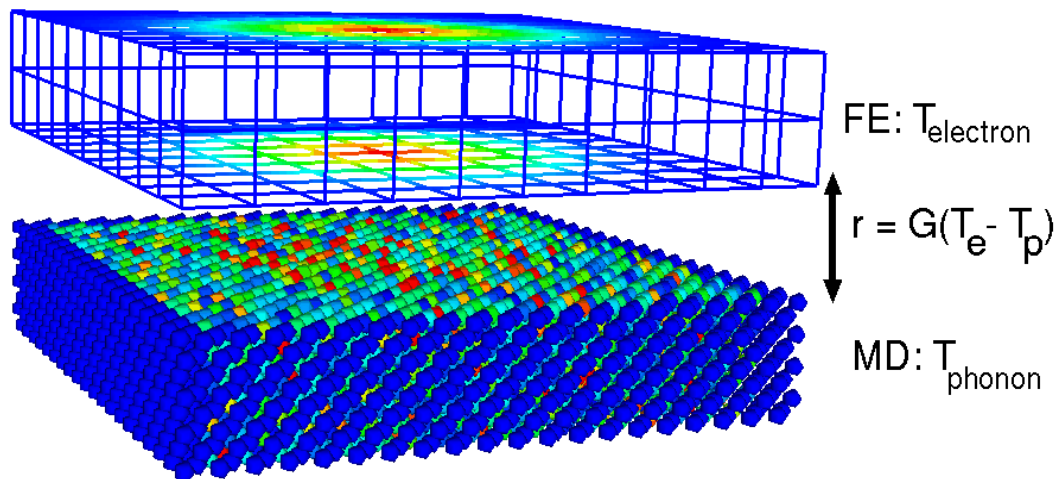




Extrinsic Physics Modeling

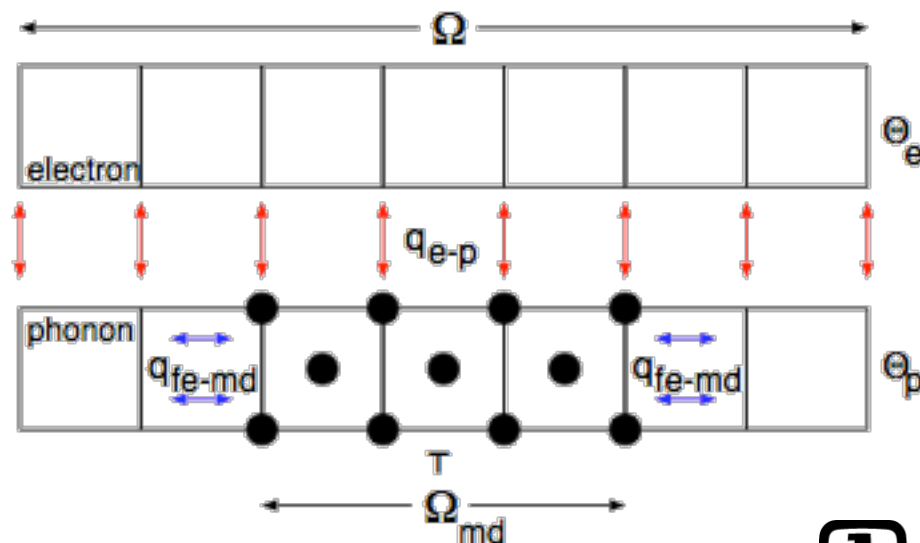
- MD explicitly represents atomic motions with great accuracy
 - Ballistic phonon propagation
 - Defects
 - Nanostructures
- MD does not capture many other important physics
 - Electric fields
 - Energy carriers
 - Electrons
- Represent additional physics in a continuum model
- Use coupling techniques developed in thermal work to interface the two disparate types of physics descriptions
- Examples underway: electron temperature, consistent electric fields, energy carrier density, full “fluidic” description of unrepresented particles

Coupled Two-Temperature Approach



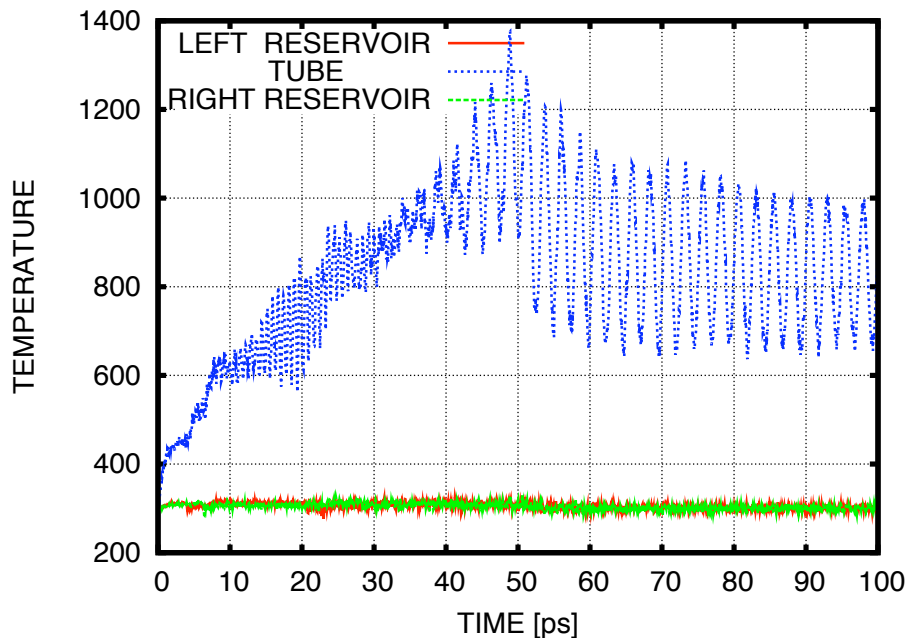
Explicit representation of phonons by MD, Electron effects solved for on overlaid mesh

Energy exchange handled though thermostats as in the thermal-only problem

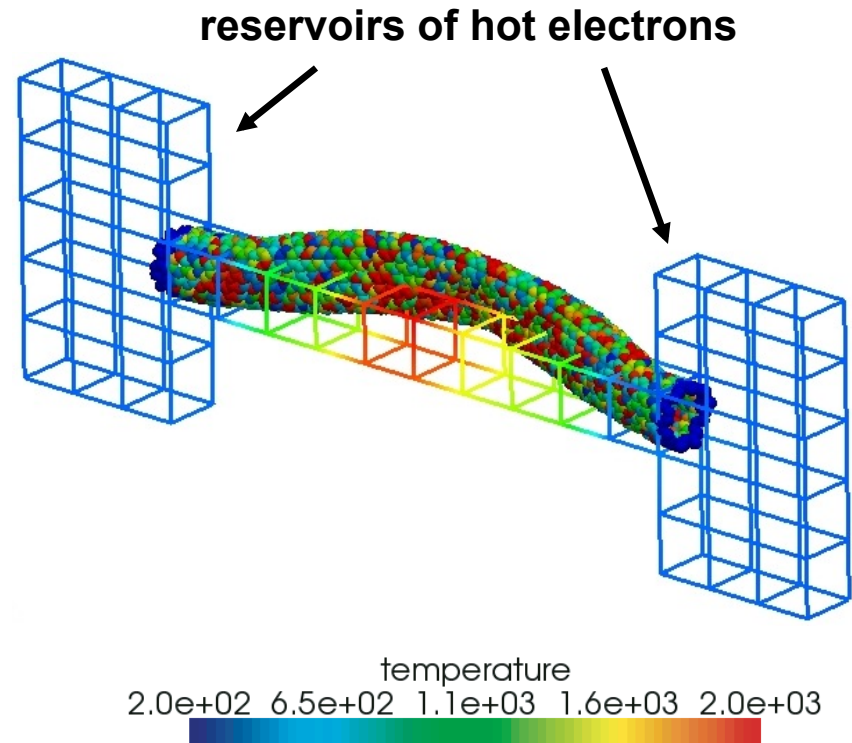


Electron Heating of a metallic CNT

- eMD can be used to model heating and thermal-induced vibration in nanostructures that possess a metallic character of thermal conduction, e.g. (8,8) armchair CNT.

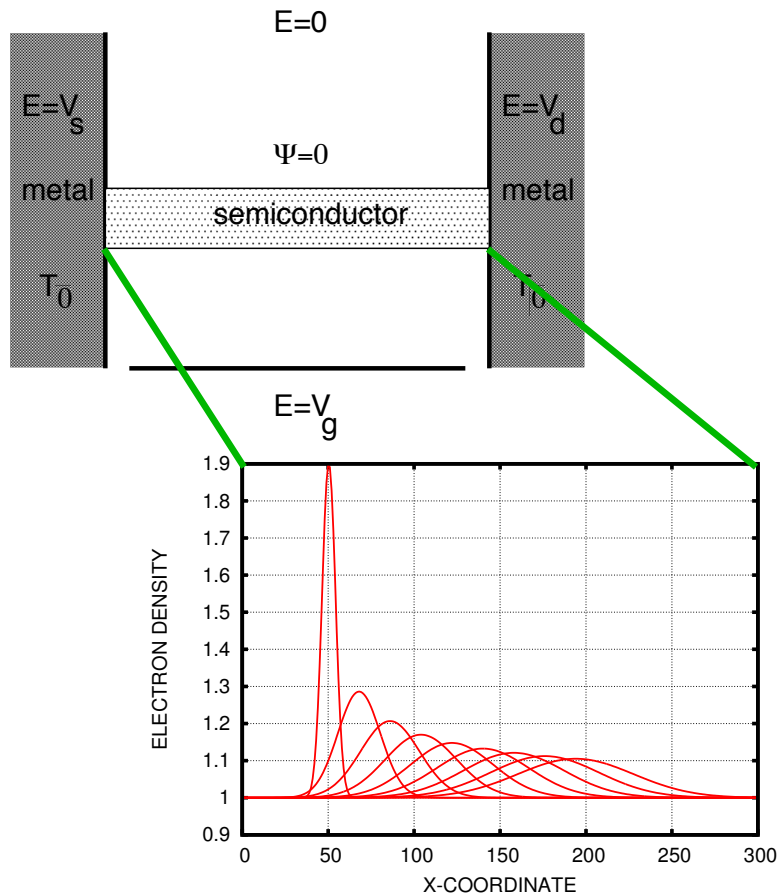


**Evolution of average temperatures
of CNT and reservoirs**

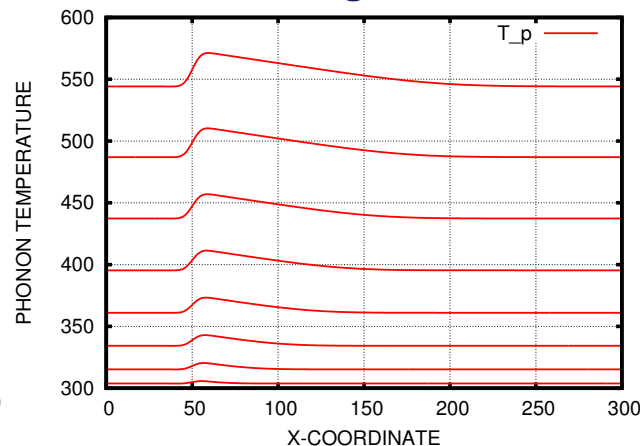
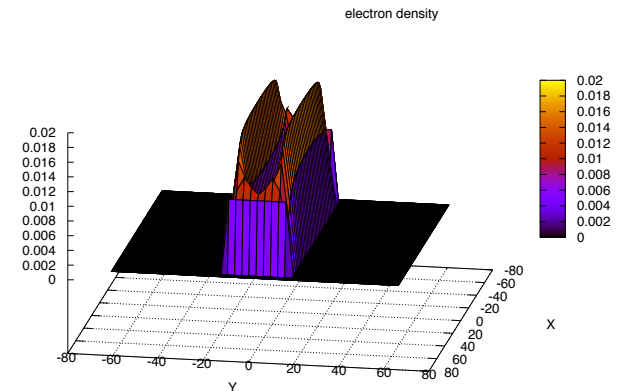


Metallic and Semi-Conductor Powered Nanodevices

- Drift-diffusion models can be used to study powered nanowires and the interaction between current and heating

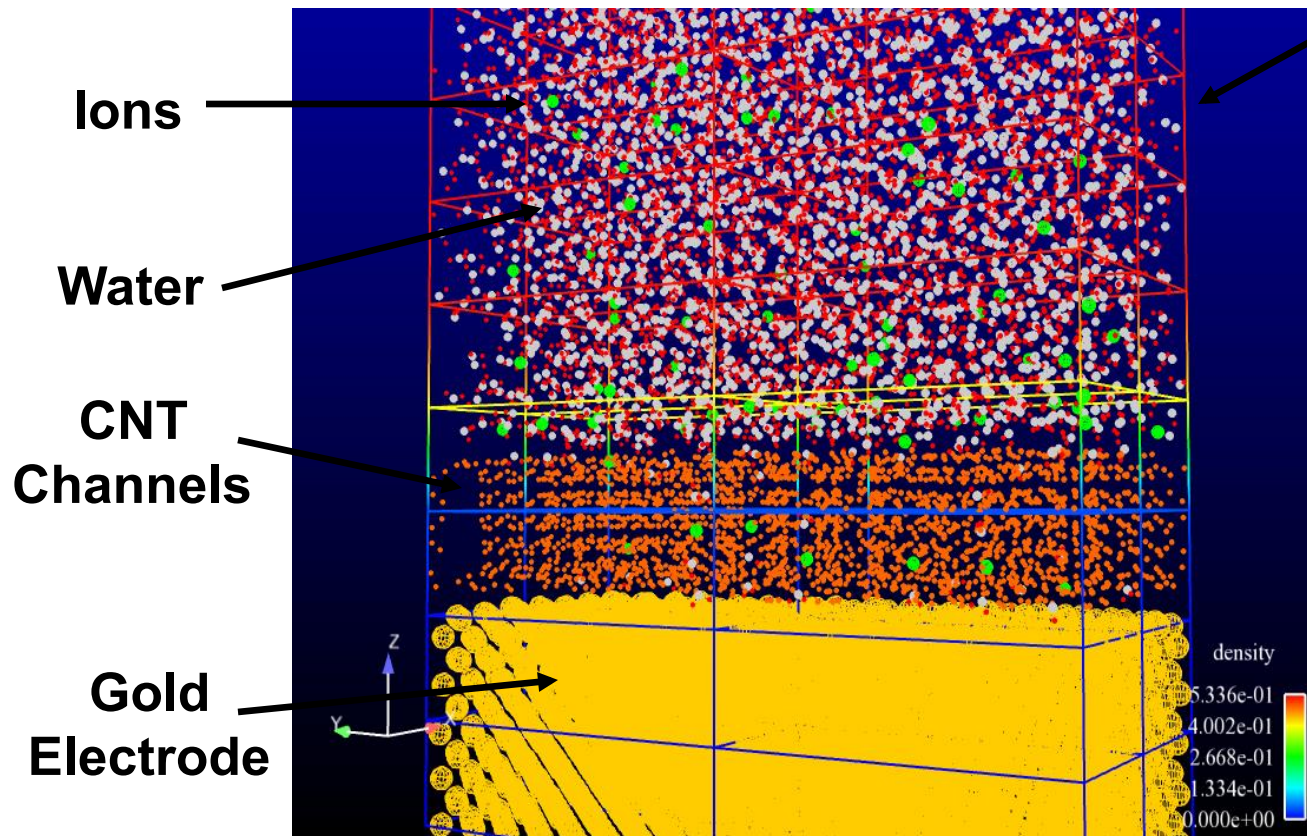


Quantum effects in nanowires give rise to spatially varying electron density and local heating



Electron pulse gives rise to uniform and local heating

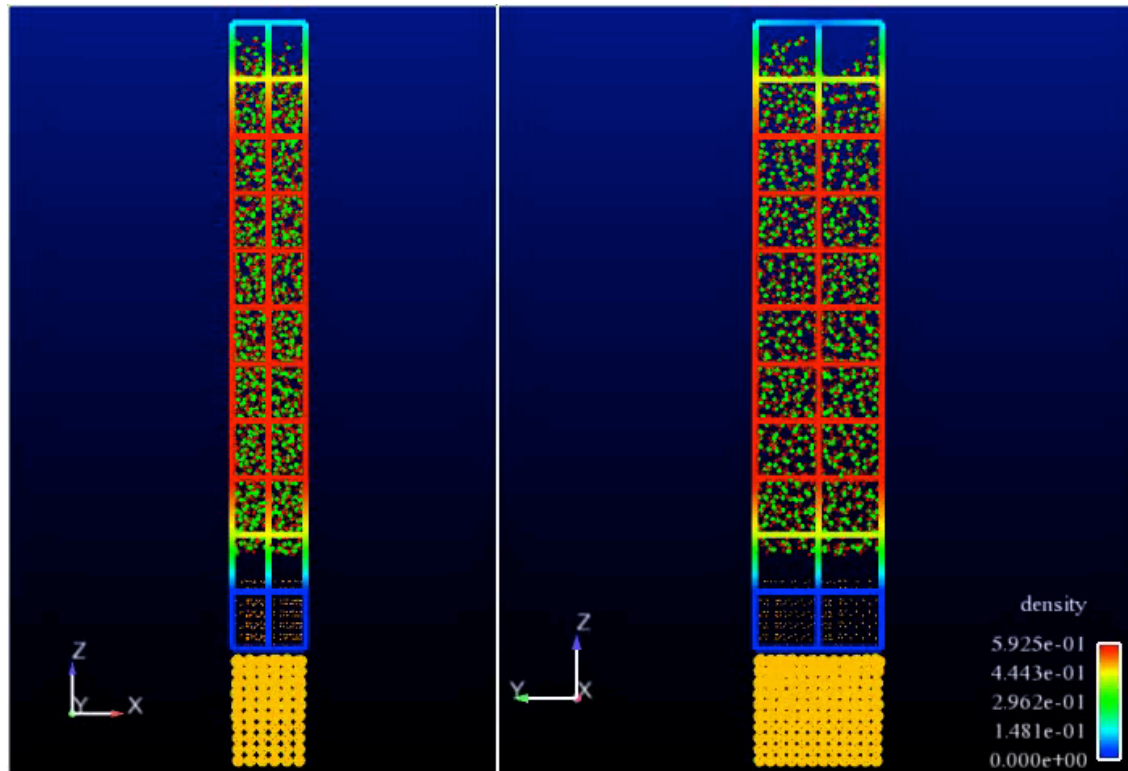
AtC Model for Long-range Electrostatics



- FE Mesh Enables
1. Coarse-scaling MD for increased physical understanding
 2. Solves for electric field with
 - a) Upscale FE source terms
 - b) Downscale MD electric forces

Other Physical Models: Fluidic Species Transport

- Define coupling in Eulerian frame rather than Lagrangian
- Track individual species to understand particle agglomeration and diffusion
- Example problem: transport of saltwater into nanotubes

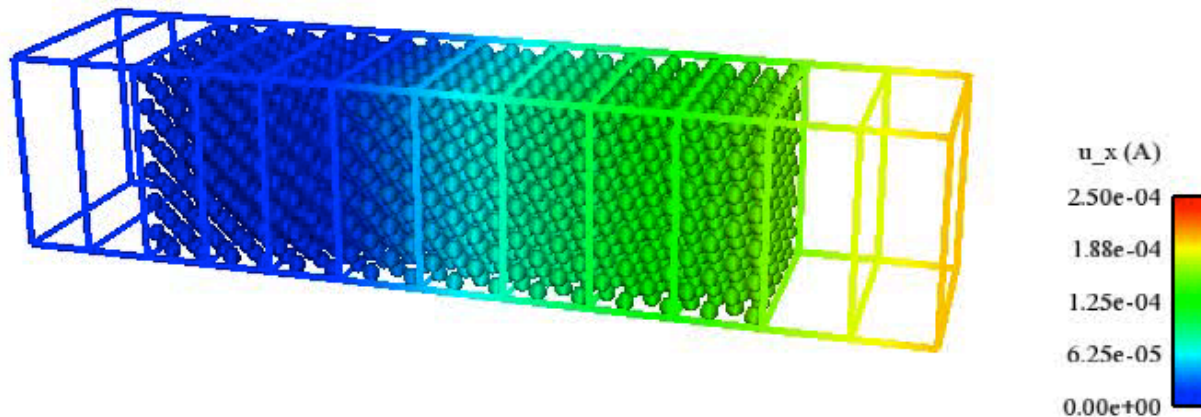


- Future work: energy storage devices

Other Physical Models:

Elasticity

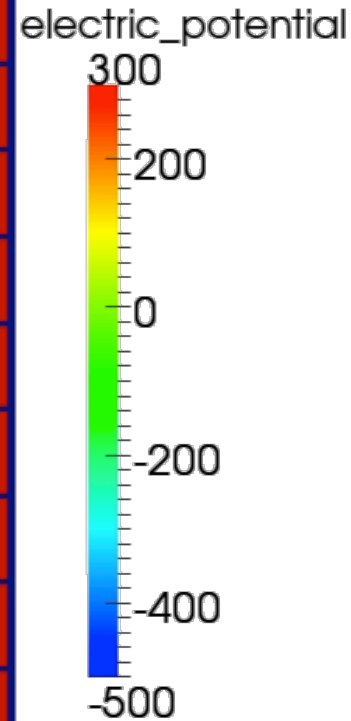
- Many types of physics problems can use the same mathematical and algorithmic structure
- Elasticity dynamics of a bar at the nano-scale:



Other Physical Models: Electrostatics

Potential drop across short axis

Net charge causes net tip displacement



Mutual repulsion opens tip

Electrons segregate to tip

Atoms anchored to fix the CNT



References

- **Thermal coupling**

- Wagner *et al.*, *Comp. Meth. Appl. Mech. Eng.* (2008)
- Templeton, Jones, & Wagner, *Model. Simul. Mater. Sci. Eng* (2010)

- **Hardy post-processing**

- Zimmerman, Jones, & Templeton, *J. Comp. Phys.* (2010)
- Jones & Zimmerman, *J. Mech. Phys. Solids* (2010)
- Jones *et al.*, *Phys. Condens. Matter* (2010)

- **Two-temperature modeling**

- Jones *et al.*, *Int'l J. Numer. Meth. Eng.* (2010)

- **Coming soon**

- Long-range electrostatics (Templeton *et al.*, *J. Chem. Theor. Comput.* (2011))
- Drift-diffusion modeling, Elasticity, Eulerian frame coupling

- **Package documentation can be found at:**

<http://lammps.sandia.gov>

Ge/Si superlattice nanowires

- Our method captures the retarded phonon transmission observed for Ge/Si superlattice nanowires with application to thermoelectrics

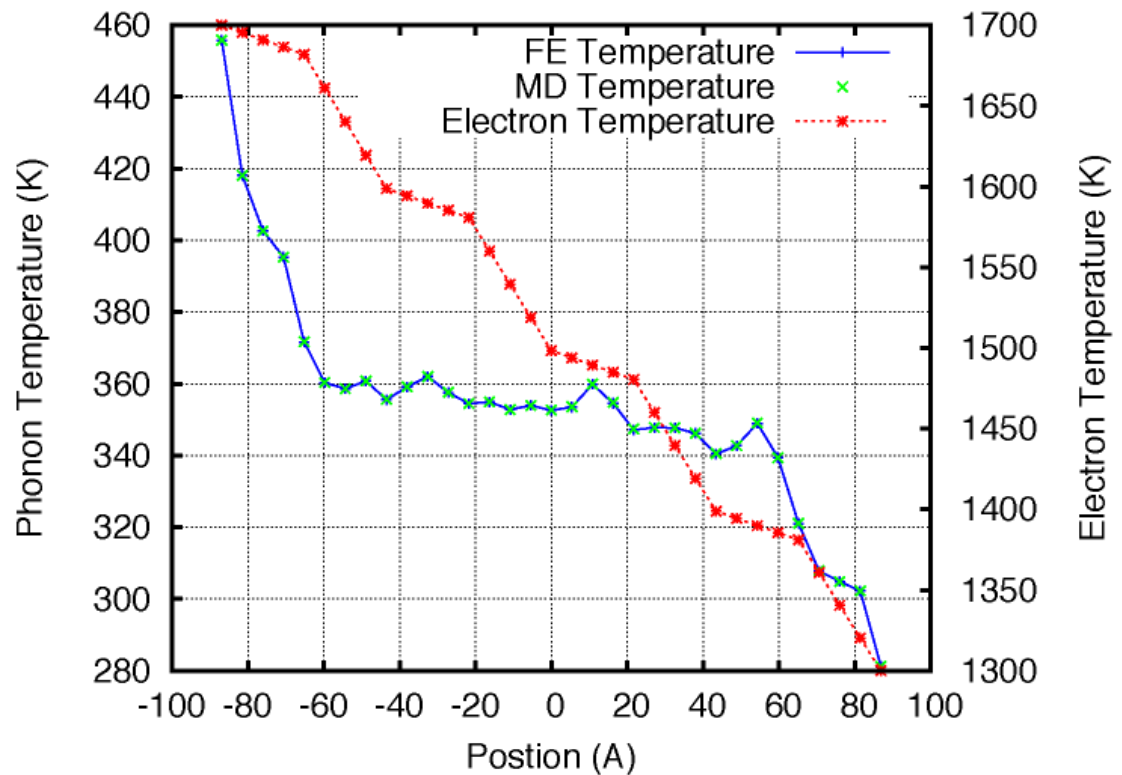
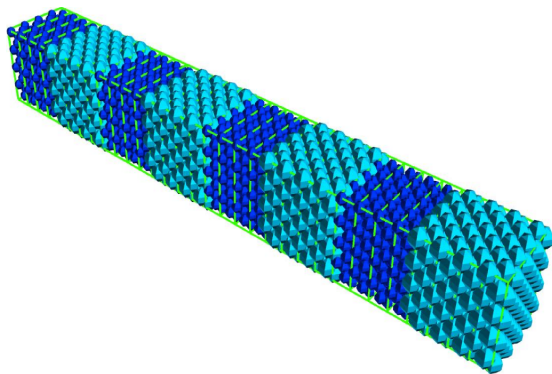
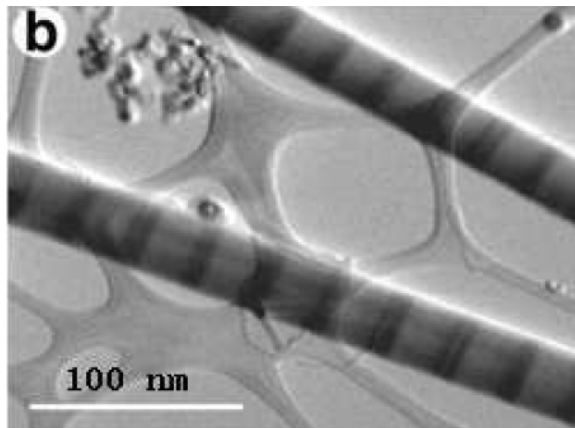


Figure 8: Temperature profiles in the superlattice