

LA-UR-12-23713

Approved for public release; distribution is unlimited.

Title:	Tested by Fire - How two recent Wildfires affected Accelerator Operations at LANL
Author(s):	Spickermann, Thomas
Intended for:	Workshop on Accelerator Operations 2012, 2012-08-06/2012-08-10 (Menlo Park, California, United States)



Disclaimer:

Los Alamos National Laboratory, an affirmative action/equal opportunity employer, is operated by the Los Alamos National Security, LLC for the National Nuclear Security Administration of the U.S. Department of Energy under contract DE-AC52-06NA25396. By approving this article, the publisher recognizes that the U.S. Government retains nonexclusive, royalty-free license to publish or reproduce the published form of this contribution, or to allow others to do so, for U.S. Government purposes. Los Alamos National Laboratory requests that the publisher identify this article as work performed under the auspices of the U.S. Department of Energy. Los Alamos National Laboratory strongly supports academic freedom and a researcher's right to publish; as an institution, however, the Laboratory does not endorse the viewpoint of a publication or guarantee its technical correctness.

Tested by Fire – How two recent Wildfires affected Accelerator Operations at LANL

T. Spickermann, LANL AOT-OPS Group
WAO 2012

Los Alamos National Laboratory Accelerator Facilities

- **Los Alamos National Laboratory (LANL) is located in Northern New Mexico, at the foot of the Jemez Mountains.**
- **Two major accelerator facilities at LANL:**
 - Dual Axis Radiographic Hydrodynamic Test Facility (DARHT)
 - Los Alamos Neutron Science Center (LANSCE)



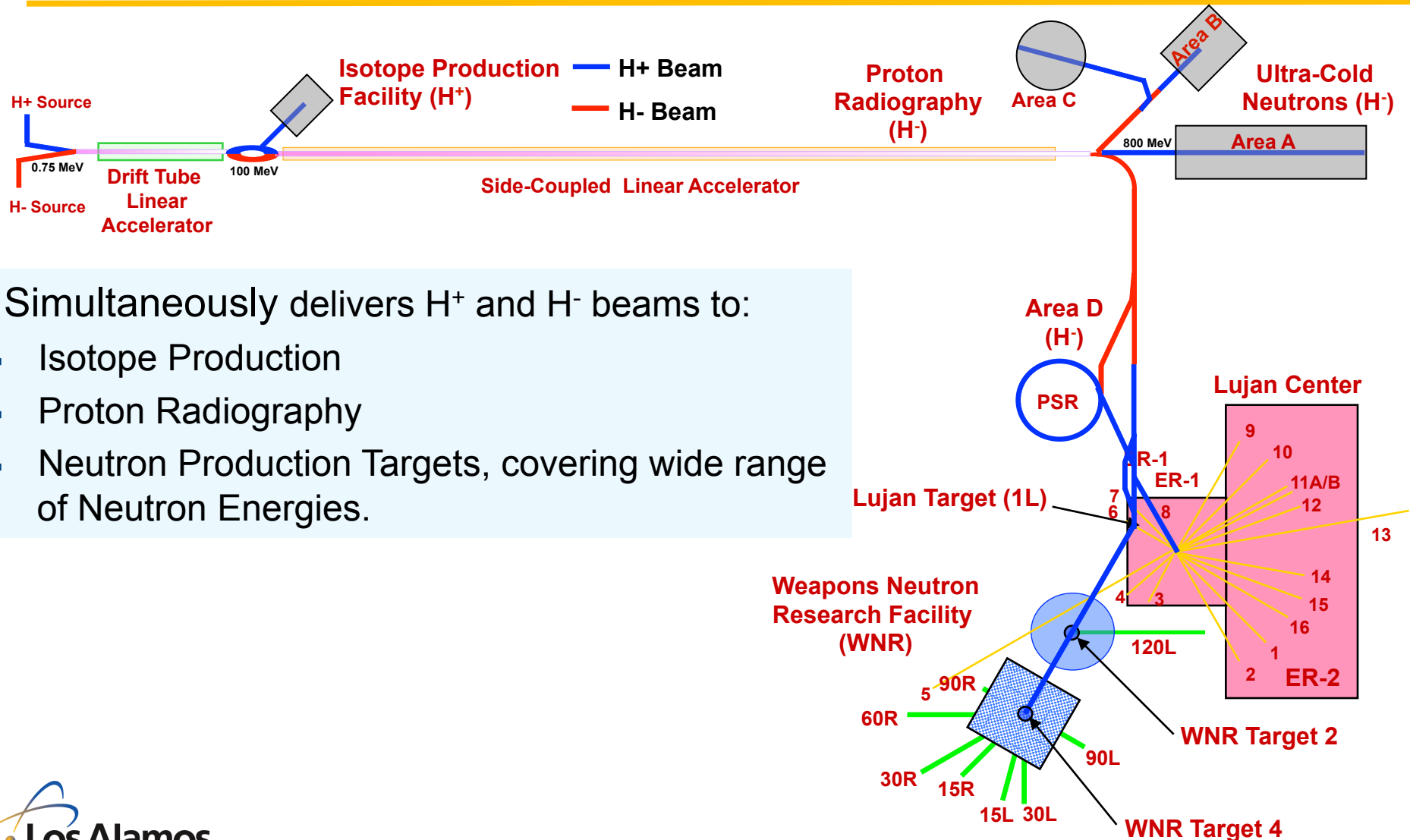
The Dual Axis Radiographic Hydrodynamic Test Facility

- Two linear induction accelerators at a right angle to each other.
- Electrons impinge in metal target, producing x-ray pulses.
- Multi-view radiographic images of dynamic processes.
- “How DARHT works” video on YouTube:

<http://www.youtube.com/user/LosAlamosNationalLab>



The Los Alamos Neutron Science Center

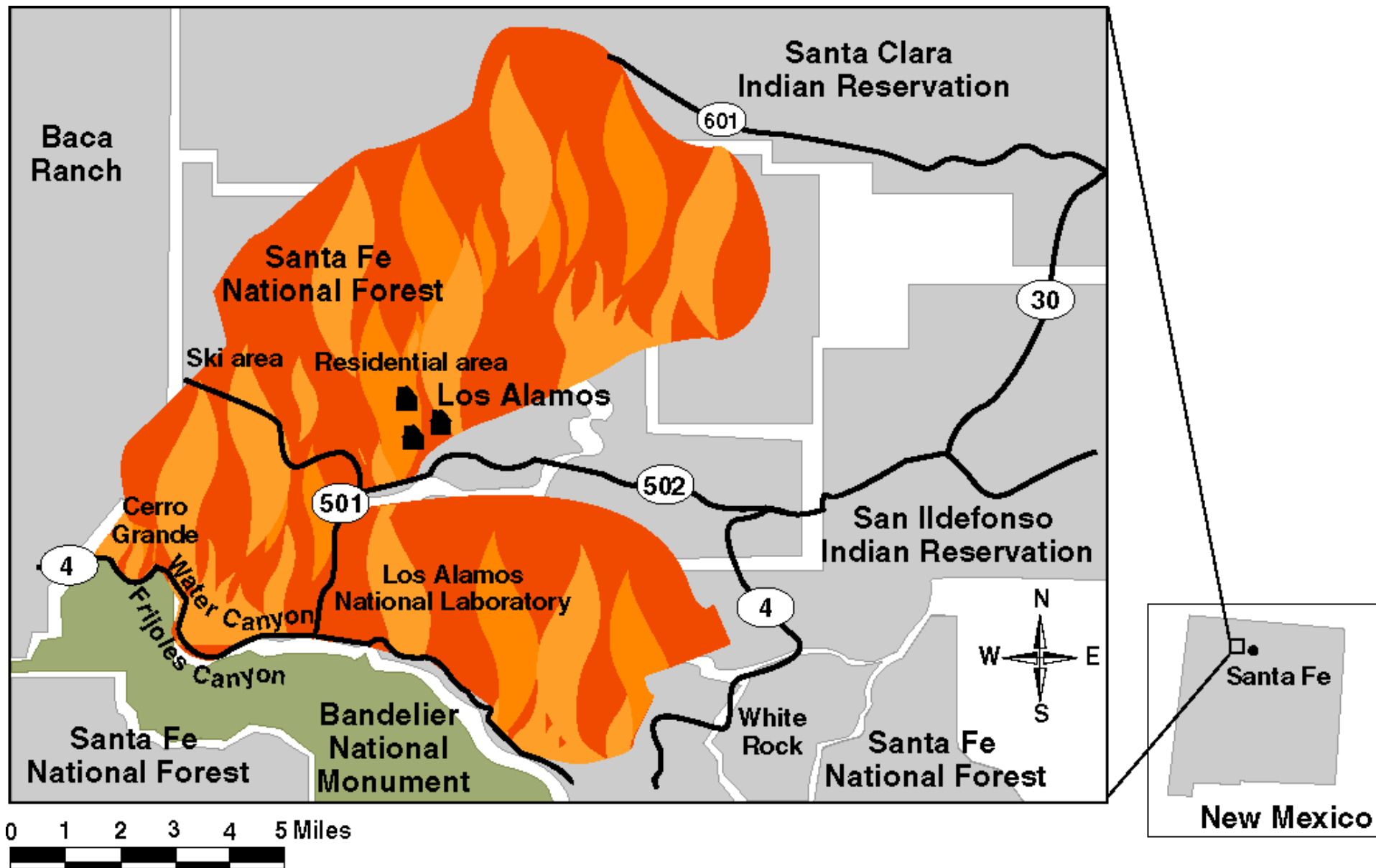




Los Alamos National Lab – Tested by Fire, Part I

■ Cerro Grande Fire: May 2000

- Started as a controlled burn; got out of hand due to high winds and drought conditions.
- Los Alamos and White Rock (~ 18,000 residents) were evacuated.
- 47,000 acres in Los Alamos, LANL and surroundings burned.
- 280 homes destroyed.
- 40 LANL structures destroyed.
- Estimated fire damage ~ \$ 1 billion.
- Over 1000 firefighters and equipment involved.
- LANL shut down for two weeks.
 - LANSCE not directly affected, but long shutdown made recovery difficult.
 - DARHT incurred huge loss of equipment and structures.



Impact on Accelerator Operations – DARHT



Transportainers
NOT fireproof!

(Looking out my office
window, what do I see?)

Impact on Accelerator Operations – DARHT

- DARHT workers had to wait for another week before being allowed back on site.
- DARHT accelerator was shut down and was unsafe to operate.
- High Explosive (HE) was used to demolish the structure.



Los Alamos National Lab – Tested by Fire, Part II

■ Las Conchas Fire: June 2011

- Started June 26 when a tree fell on a power line.
- Over 150,000 acres burned (630 square kilometers).
- Mandatory evacuation of Los Alamos June 27.
 - No mandatory evacuation of White Rock, but poor conditions caused many residents to evacuate anyway.
- Over 60 residences destroyed outside of Los Alamos.
- LANL also closed for all non-essential personnel (including myself) on June 27.
- No LANL structures destroyed. Only one spot fire on LANL property (more on that in a moment).
- Largest wild fire in New Mexico state history! ...until 2012...

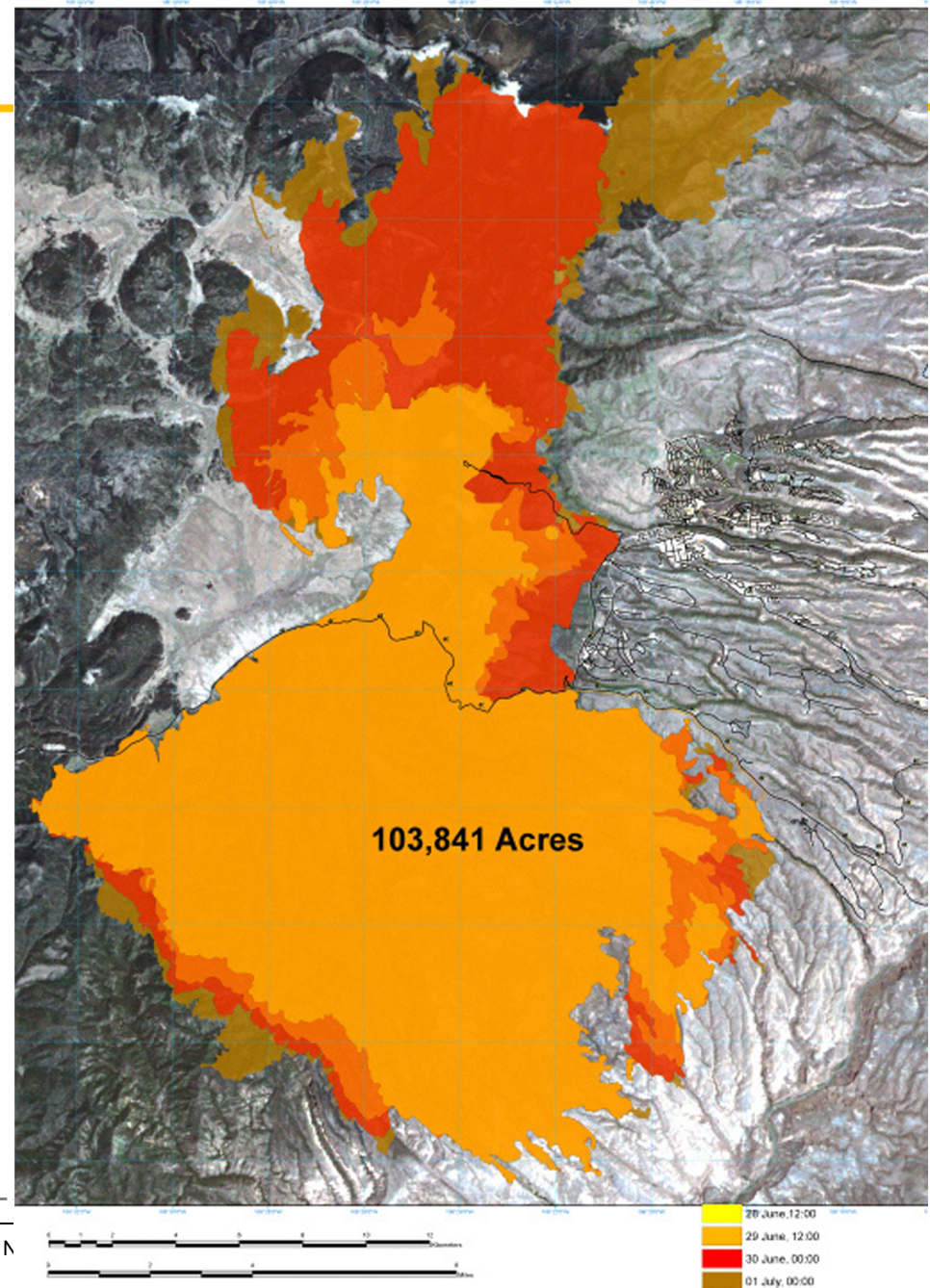
View from Los Alamos High School on the evening of June 26:



■ Extent of the fire as of July 1st.

- Burnt area is much larger than Cerro Grande, but Los Alamos and LANL spared, due to fire changing direction.

FIRE PROGRESSION: LAS CONCHAS LOS ALAMOS NATIONAL LABORATORY



Impact on Accelerator Operations – LANSCE

- **Sunday, June 26, 5:30 pm (around shift turnover):**
 - Associate Director for Experimental Sciences (ADEPS) calls Central Control Room (CCR), instructing crew to place accelerator in a safe mode for possible evacuation.
 - ADEPS “owns” LANSCE User Facility (LUF Director is also Deputy ADEPS).
 - Accelerator Operations and Technology (AOT) division (including Operations group) is part of a different directorate.
 - Facility management is part of yet another directorate.
 - Day crew confirms shutdown instructions with AOT and Facilities division leaders.
 - Crews also consult with system owners, who are off-site for the weekend.

Impact on Accelerator Operations – LANSCE

- **Night crew continues shutdown of accelerator.**

- Water and vacuum systems are kept on, in the hope to facilitate recovery.

- **After 19:00:**

- Non-essential personnel ordered off-site.
- Personnel attempting to come on site are turned around.
- CCR crew and Radiation Protection personnel remain on site. Ensure evacuation of others and secure radioactive sources and materials.
- CCR secures equipment as per phone instructions from system owners.

- **After 20:00:**

- Operators can see flames in the Jemez mountains.

Impact on Accelerator Operations – LANSCE

■ Monday, Day shift:

- Two of four day shift operators have heard about LANL closure, started to evacuate, and are not coming in. One operator comes in late.
- For some hours in the morning only crew chief and Operations group leader are staffing CCR.

■ ~ 15:00: All remaining personnel except Emergency Response are ordered to evacuate LANL. Los Alamos under mandatory evacuation.

Impact on Accelerator Operations – LANSCE

- **On Thursday, June 30 two operators take part in a walk down of the LANSCE facility.**
 - One operator brings the control system back online, so that he can more easily check site-wide equipment statuses.
 - A squirrel had a fatal encounter with the facility substation, causing the only fire on LANL property. The fire is spotted by a facility worker who takes part in the walk down, and put out by LAFD, having burned 1 acre. Power is diverted to LANSCE from other sources to keep vacuum in the machine. Operators start from scratch in their recovery efforts.
- **On Tuesday, July 5, one day before LANL officially reopens, crews return to staff CCR.**
 - The plan to recover equipment in a timely fashion is hampered by the absence of system owners for another day.

Summary

- In a little more than a decade two large wild fires threatened Los Alamos and impacted accelerator operations at LANL.
- In 2000 the Cerro Grande Fire destroyed hundreds of homes, as well as structures and equipment at the DARHT facility. The DARHT accelerators were safe in a fire-proof building.
- In 2011 the Las Conchas Fire burned about 630 square kilometers (250 square miles) and came dangerously close to Los Alamos/LANL.
- LANSCE accelerator operations Lessons Learned during Las Conchas fire:
 - Develop a plan to efficiently shut down the accelerator on short notice.
 - Establish clear lines of communication in emergency situations.
 - Plan recovery and keep squirrels out!