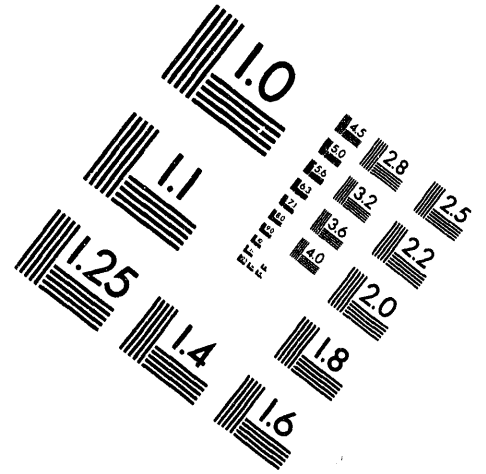
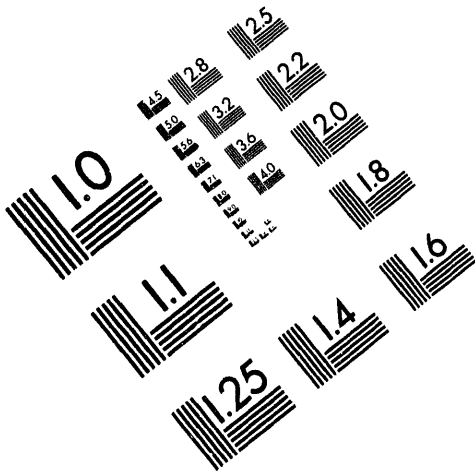




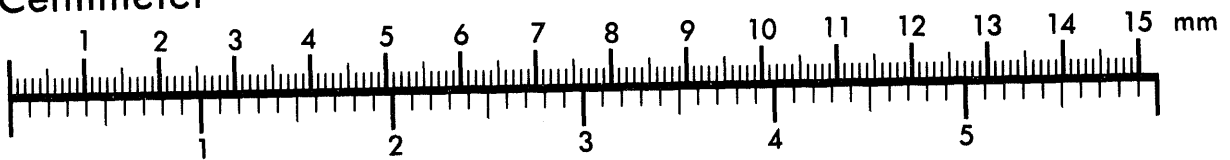
**AIM**

**Association for Information and Image Management**

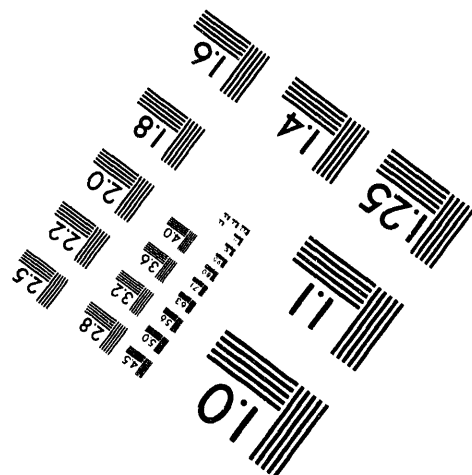
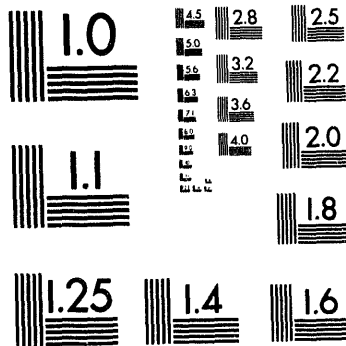
1100 Wayne Avenue, Suite 1100  
Silver Spring, Maryland 20910  
301/587-8202



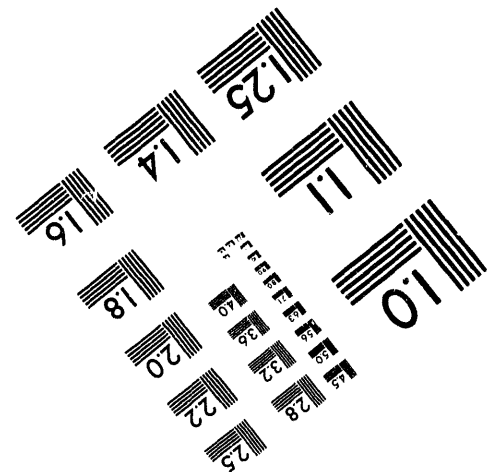
Centimeter



Inches



MANUFACTURED TO AIM STANDARDS  
BY APPLIED IMAGE, INC.



**1 of 1**

SAND93-4053  
Unlimited Release  
Printed April 1994

Distribution  
Category UC-271

## **Solar Electric Generating System II Finite Element Analysis**

Jeffrey L. Dohner and John R. Anderson  
Sandia National Laboratories  
Albuquerque, NM 87185

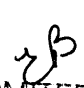
### **ABSTRACT**

On June 2 1992, Landers' earthquake struck the Solar Electric Generating System II, located in Daggett, California. The 30 megawatt power station, operated by the Daggett Leasing Corporation (DLC), suffered substantial damage due to structural failures in the solar farm. These failures consisted of the separation of sliding joints supporting a distribution of parabolic glass mirrors. At separation, the mirrors fell to the ground and broke. It was the desire of the DLC and the Solar Thermal Design Assistance Center (STDAC) of Sandia National Laboratories (SNL) to redesign these joints so that, in the event of future quakes, costly breakage will be avoided.

To accomplish this task, drawings of collector components were developed by the STDAC, from which a detailed finite element computer model of a solar collector was produced. This nonlinear dynamic model, which consisted of over 8560 degrees of freedom, underwent model reduction to form a low order nonlinear dynamic model containing only 40 degrees of freedom. This model was then used as a design tool to estimate joint dynamics. Using this design tool, joint configurations were modified, and an acceptable joint redesign determined.

The results of this analysis showed that the implementation of metal stops welded to support shafts for the purpose of preventing joint separation is a suitable joint redesign. Moreover, it was found that, for quakes of Landers' magnitude, mirror breakage due to enhanced vibration in the trough assembly is unlikely.

**MASTER**

DISTRIBUTION OF THIS DOCUMENT IS UNLIMITED 

## 1. BACKGROUND

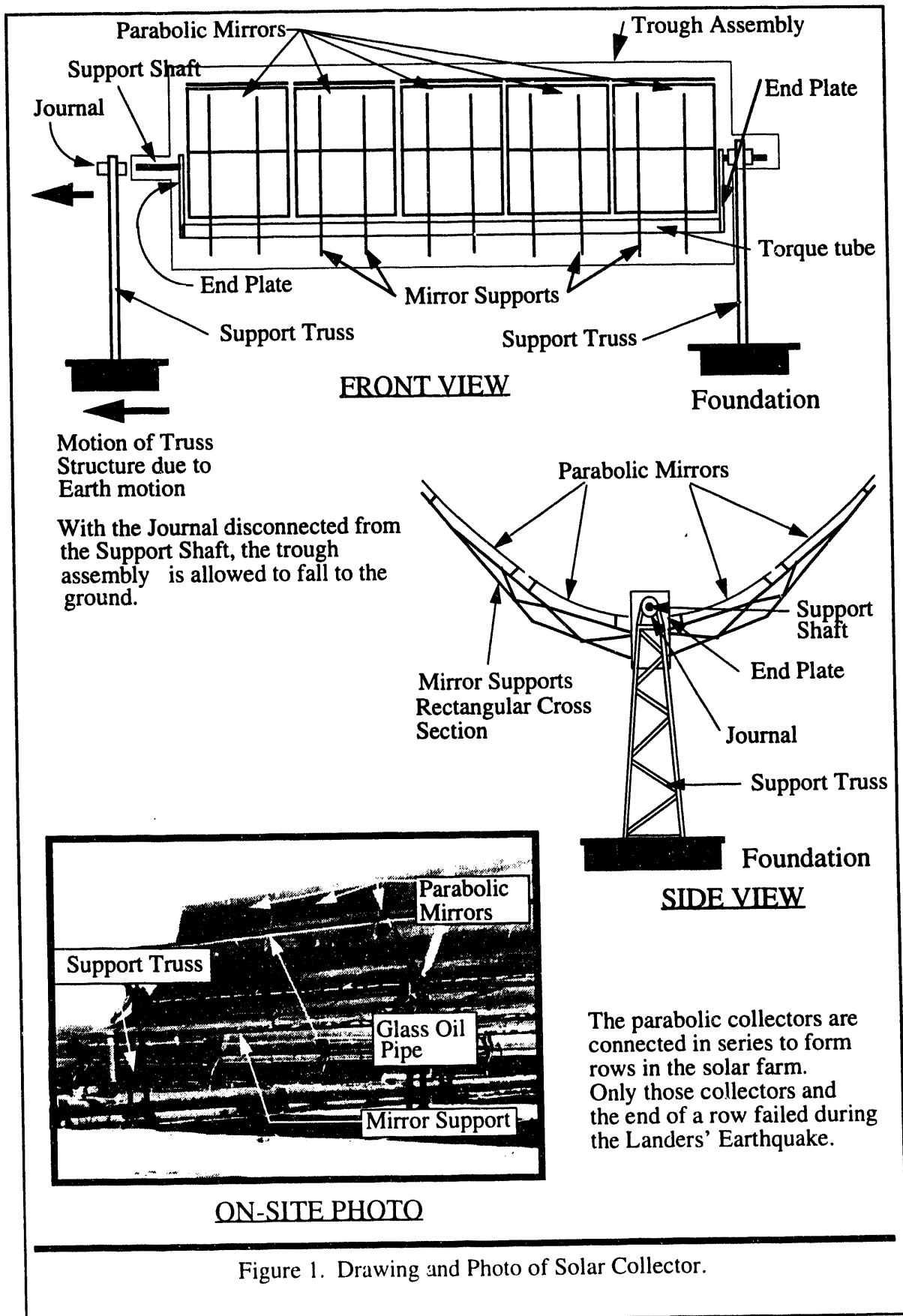
This section describes the Solar Electric Generating System II (SEGS II) facility, the Landers' Earthquake, and the technical problem at hand.

### 1.1 The SEGS II Facility

The SEGS II facility consists of a farm of glass mirrored, single axis, parabolic trough solar collectors (see Figure 1). These collectors use solar energy to heat oil; which is used to produce steam; which, in turn, drives a turbine-generator to produce electricity.

A collector, shown in Figure 1, consists of a flexible truss structure supporting a distribution of mirrors. This flexible truss structure can be defined in terms of a number of substructures. *In this report*, the following terminology will be used to define these substructures. The tubular substructure which runs the length of the collector will be called the *torque tube*. The truss substructures between the mirrors and the torque tube will be called *mirror supports*. The flat plates attached at each end of the torque tube will be called *end plates*, and the tubular shafts projecting from these end plates will be called *support shafts*. The support shafts fit into journals which are attached to another set of substructures which will be called the *support trusses*. The support trusses transfer the weight of the entire collector to a concrete foundation. Vibration at this foundation can be transmitted through the support trusses, the journals, the support shafts, the end plates, the torque tube, and mirror supports to produce vibration in the mirrors. The end plates, torque tube, mirror supports, and mirrors will collectively comprise another substructure called the *trough assembly*.

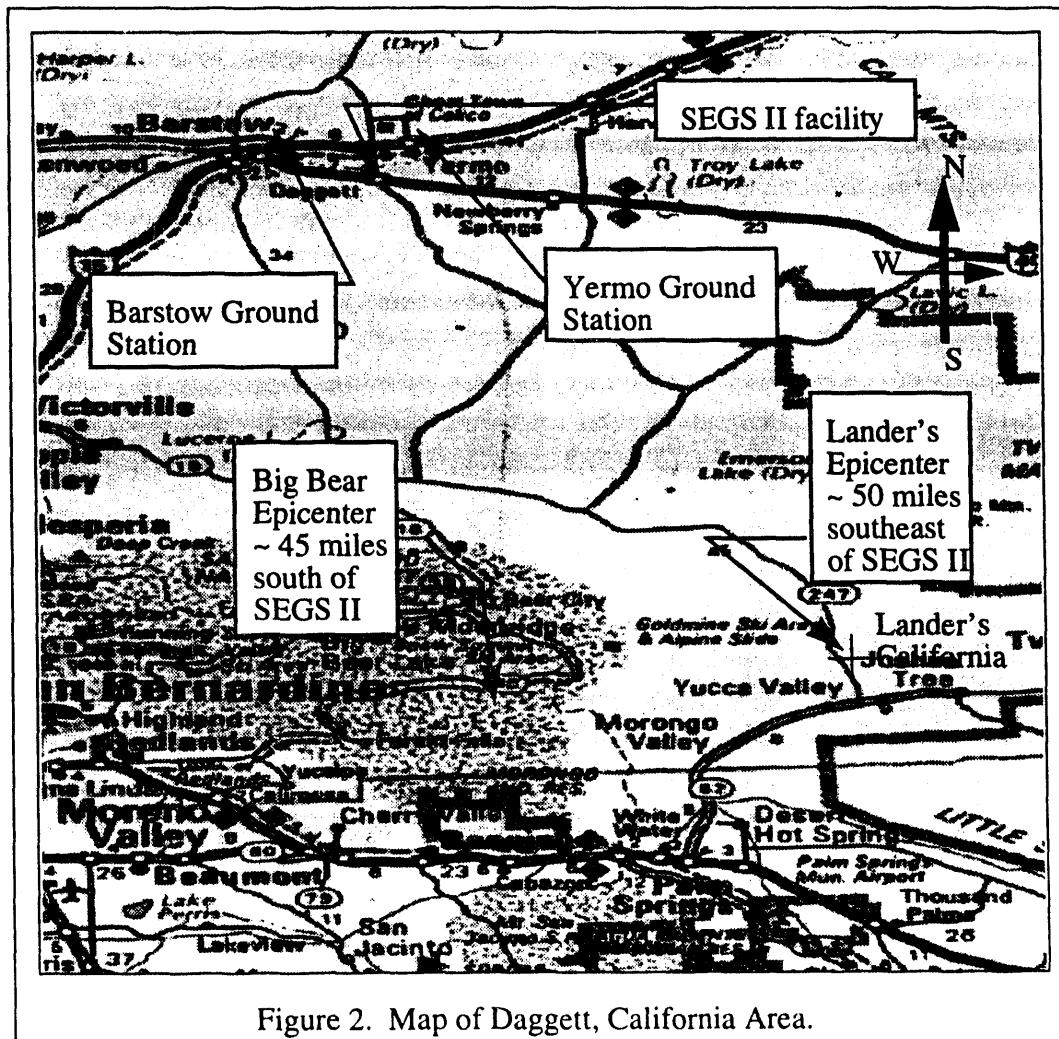
In SEGS II, collectors are attached end to end to form rows which rotate about a north-south axis. The assembly of all collectors in all rows is referred to as the *solar farm*.



## 1.2 The Landers' Earthquake

On June 2 of 1992, the Landers' earthquake struck the SEGS II facility in Daggett, California. The displacement of the quake was large enough such that some troughs separated from their support trusses allowing one end of the trough assembly to fall to the ground and shattered several mirrors of each fallen collector.

As shown in Figure 2,<sup>1</sup> the epicenter of this quake was located near Landers, California - a small town approximated 50 miles south east of SEGS II. The magnitude of the quake was M7.5 (on the Richter scale). Thus, making it the largest quake to strike southern California in the last 40 years.<sup>2</sup> Approximately three and one half hours later, a second quake of magnitude M6.5 also struck SEGS II. Although its epicenter was closer, the



1. Rand McNally Road Atlas, 65th Edition, 1989

2. Ad Hoc Working Group, Future Seismic Hazards in Southern California, Phase I: Implications of the 1992 Landers' Earthquake Sequence, report by the California Division of Mines and Geology, P.O. Box 2980, Sacramento, CA 95812-2980

effects of this quake were minimal compared to the effects of the Landers' quake. The epicenter of this quake was near the small town of Big Bear Lake City - only 45 miles south of Daggett.

There are two ground-response stations<sup>3</sup> within 10 miles of Daggett. The first station, at Barstow, is located approximately eight miles to the west, and the second station, at Yermo, is located approximately four miles to the east. Due to their close proximity, it was assumed that earth motion at Daggett and Yermo was similar to earth motion at Barstow. Therefore, recorded Barstow data could be used as input to numerical simulations.

The Barstow data was limited in both frequency and direction. This data was band passed filtered to frequencies below 23Hz and above 0.07Hz. Three channels recorded acceleration in two perpendicular directions parallel to ground and in one direction perpendicular to ground. Rotations in these three directions were not measured, and therefore, without alternative, were assumed zero. From the acceleration data, displacement data was deduced. Figures 3a and 3b show recorded Barstow acceleration and deduced displacement for one channel.

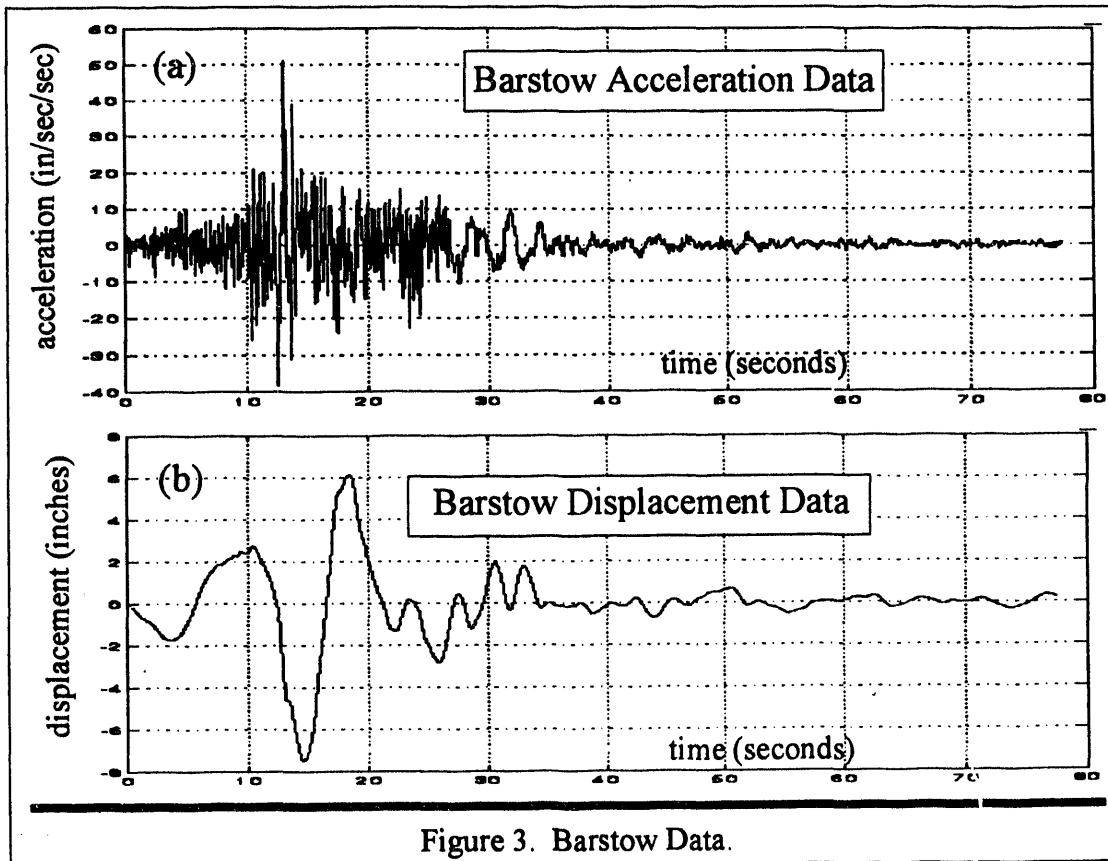
As is shown in this data, the frequency response of acceleration is very high; however, the frequency response of displacement is low. Since both acceleration and displacement are excitations to the numerical problem (discussed below), and since the problem contained non-linear components (also discussed below), the frequency response in the mirrors could not be bounded without the use of a simulation. High frequencies creeping into mirror dynamics could break the mirrors.

### **1.3 Objective**

After the Landers' earthquake, the Daggett Leasing Corporation (DLC), which operates SEGS II, contacted the Solar Thermal Design Assistance Center (STDAC) of Sandia National Laboratories (SNL) for assistance in determining a low cost solution to the journal separation problem. Personnel of DLC suggested welding stops at the end of each journal to prohibit the journals from separating from the support structure. STDAC engineers concurred that the stops would indeed prohibit separation but cautioned that the solution should be analyzed to ensure that this remedy would not cause subsequent failures. STDAC then contacted SNL's structural dynamics department and asked for their assistance in performing a Finite Element Analysis to determine the acceptability of the proposed solution.

---

3. A ground-response station is a location where seismic activity is recorded.



The following section describes the Finite Element (FE) model used in assessing acceptability.

## 2. FINITE ELEMENT (FE) MODEL DEVELOPMENT

There is a 60% probability that within the next thirty years an earthquake as large as or larger than the Landers' earthquake will strike southern California.<sup>4</sup> Therefore, the solar collectors, which failed in the Landers' earthquake, must be redesigned to survive this imminent geological threat.

The redesign process can be experimental, analytical or both. The disadvantage of using an experimental process is that experiments are relatively costly, whereas the advantage of an analytical process is that redesign costs are lower and design flexibility higher. Nevertheless, the disadvantage of using an analytical process is that when dynamics are complex, the accuracy of results unsupported by experiment is questionable. Therefore,

4. see Ref. 2 on page 5.



a process which uses both experiment and analysis is preferred. In this report, only an analytical approach is discussed.

The following section describes the Finite Element (FE) model used in assessing acceptability.

The redesign process consist of constructing a model of collector dynamics, simulating that model with recorded input data (the Barstow data), and varying modeled joint parameters to determine a set of viable joint configurations. The complexity and detail of the model is dependent on the characteristics of the excitation, and the capacity of the computational implementation relative to the complexity of dynamics.

In this redesign process, a FE model of a single solar collector was produced. This model was nonlinear and of high order. The difficulty with assimilating a high order nonlinear model into the joint redesign process is that such models require excessive central processing unit run times. Nevertheless, for redesign, the model must run quickly. This high order, nonlinear model was massaged into workable form via substructure modeling, model reduction, and substructure assembly. This resulted in a low order nonlinear model sufficient as a design tool.

## **2.1 Substructure Modeling**

Substructure modeling is the dynamic modeling of an individual or a group of substructures. If a substructure model is linear, model reduction can be performed, and the reduced order substructure model can be combined with other substructure models to form a reduced order model of the total system. The process of recombining all substructure models will be called substructure assembly.

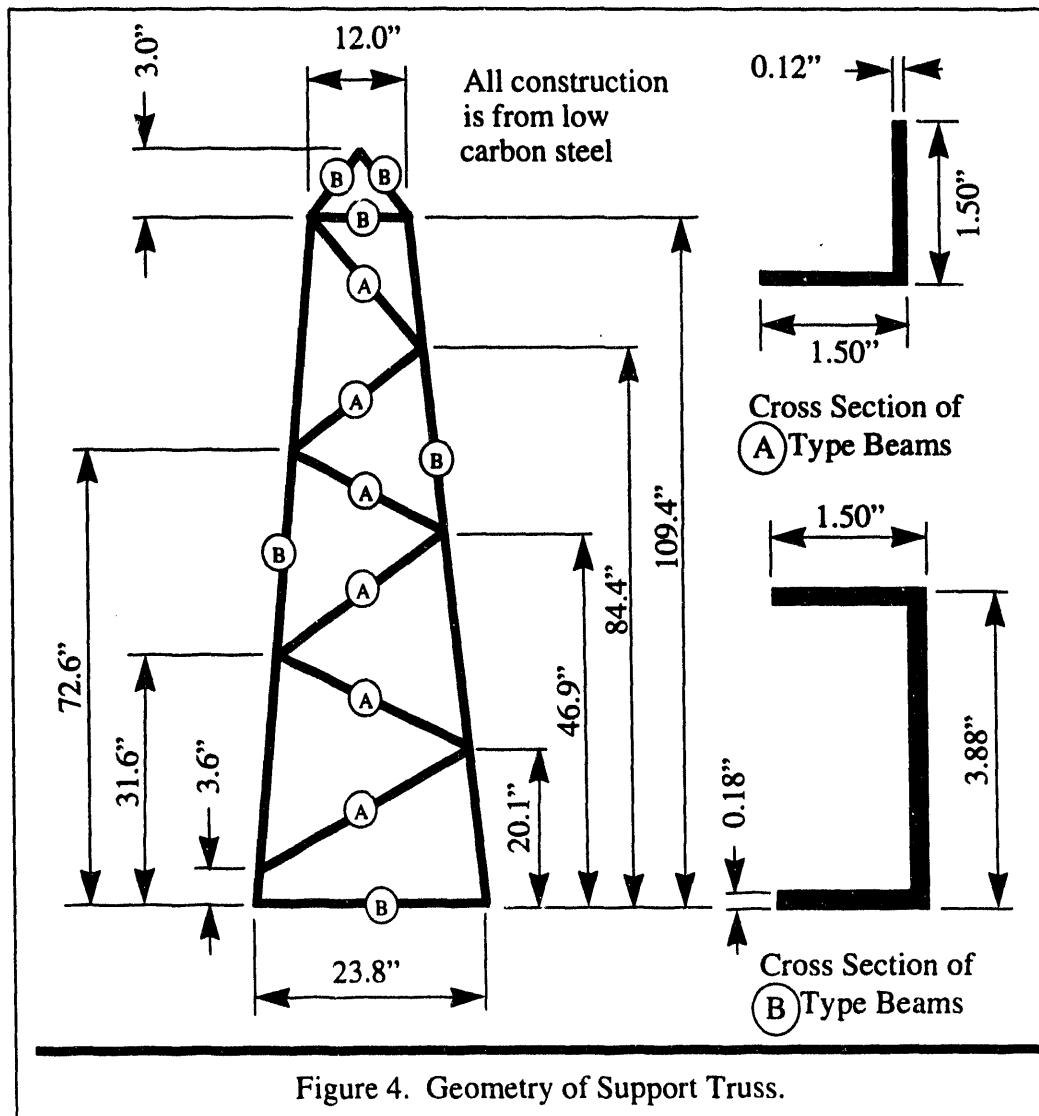
Collector dynamics were modeled using five separate substructure models. These models were:

- |   |  |
|---|--|
| <b><u>Left Support Truss Model</u></b> -  | a linear FE model representing left support truss dynamics,  |
| <b><u>Left Joint Model</u></b> -          | a constraint model representing the dynamics of the joint between the left support truss and the trough assembly,      |
| <b><u>Trough Assembly Model</u></b> -     | a linear FE model representing trough assembly dynamics,   |
| <b><u>Right Joint Model</u></b> -         | a constraint model representing the dynamics of the joint between the right support truss and the trough assembly, and |
| <b><u>Right Support Truss Model</u></b> - | a linear FE model representing right support truss dynamics.   |

A concise discussion of the production of each of these models is given below.

### 2.1.1 Left and Right Support Truss Models

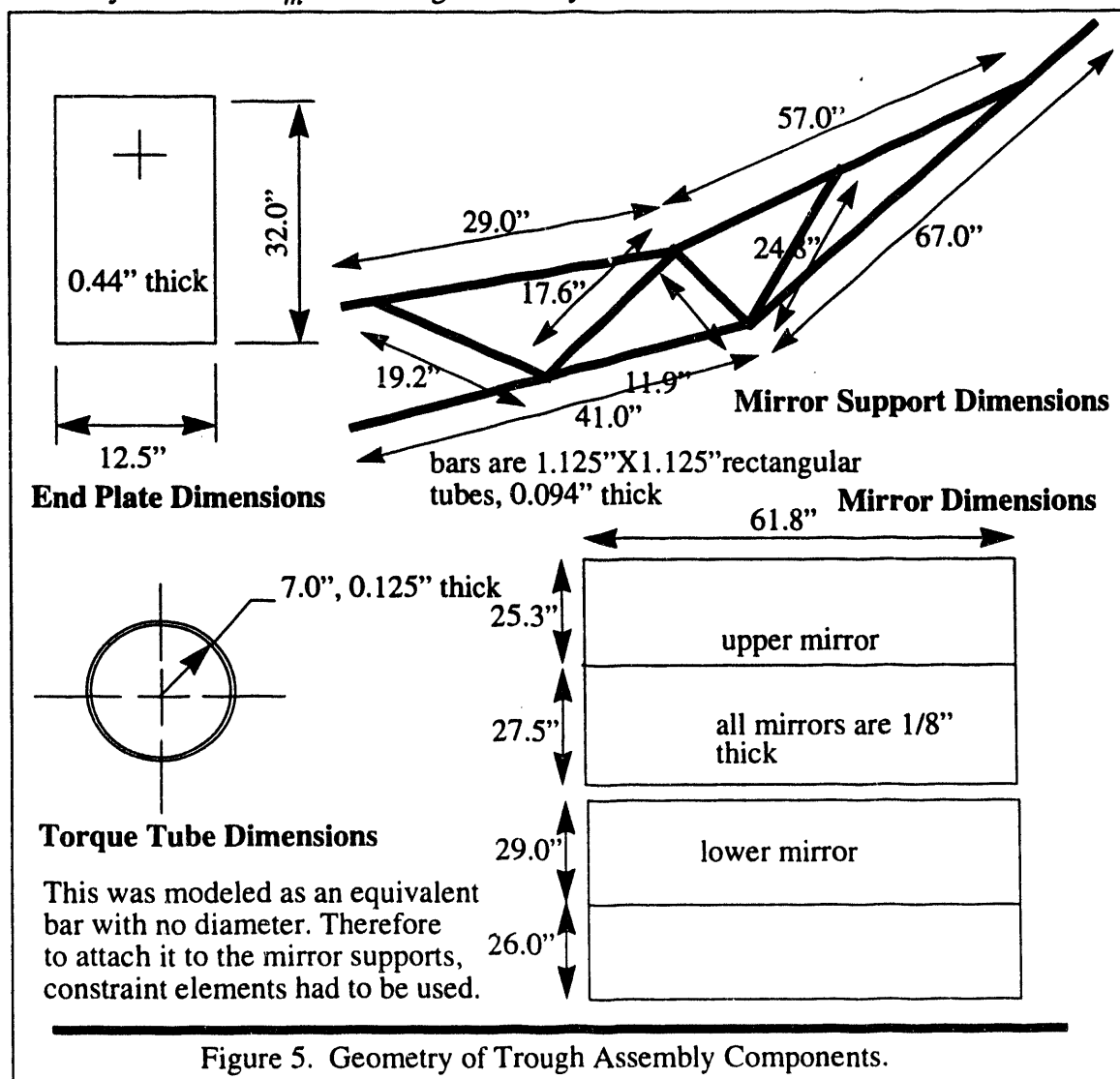
Support trusses, composed of a distribution of welded angle iron, were modeled in PATRAN 3 as a collection of beams. Figure 4 shows a drawing of a support truss. Notice that this model does not include a journal. This is because journal dynamics are included into the left and right joint models. The left and right support trusses were identical in geometry and construction and therefore did not have to be modeled separately. Each support truss weighs about 200  $lb_m$ , and each support truss model contained 378 Degrees of Freedom (DOF).



## 2.1.2 Trough Assembly Model

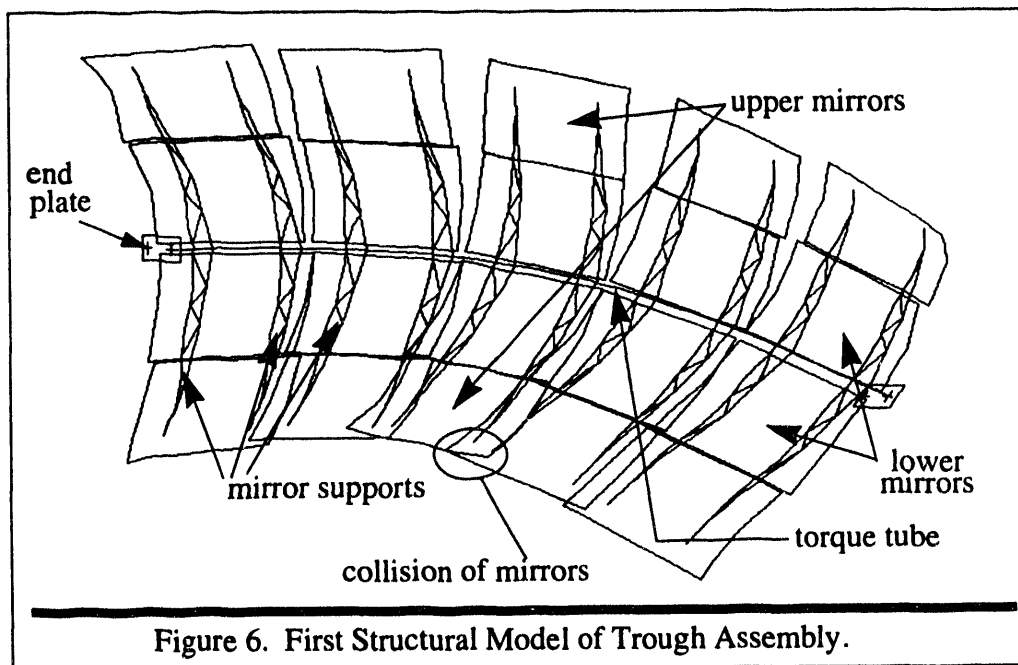
The trough assembly contains the end plates, the torque tube, the mirror supports, and the mirrors. This assembly was also modeled in PATRAN 3. The end plates and mirrors were modeled using thin shell elements, and the torque tube and mirror supports were modeled using beam elements. Two problems evolved from this modeling. First, since thin shell elements carry no normal angular rotation, it was not possible to model the transmission of normal torsional loads into the end plates via shell elements alone. Therefore, a collection of rigid bar constraints were attached to the plate elements to allow for torsional loading. Second, since the finite diameter torque tube was represented by a bar element of equivalent stiffness and mass but of infinitesimal diameter, massless rigid bar constraints had to be applied to couple torque tube dynamics to support truss dynamics.

Trough component dimensions are shown in Figure 5. The total mass of the trough assembly was 2160  $lb_m$ . The trough assembly model consisted of 7812 DOF.



A NASTRAN modal analysis of the trough assembly model produced six rigid body modes and a closely spaced distribution of structural modes. The natural frequencies of the first seven structural modes were 9.94, 11.53, 12.01, 16.39, 16.41, 16.53, and 16.81Hz. Due to high modal density, the accuracy of the model above 16Hz was questionable. This is because model accuracy is inversely related to modal density. As modal density increases, the ability for a deterministic FE model to represent reality accurately is questionable. Nevertheless, since the lower order modes were well spaced, and since these are the modes which were significant in determining joint dynamics, the model was deemed sufficient as a design tool.

Figure 6 shows the mode shape of the first structural mode at 9.94Hz. For sufficiently large amplitude excitations, this mode produces mirror collisions. If the mirrors collide, they will break. This mode represents a dominate mechanism of mirror collision.



### 2.1.3 Left and Right Joint Models

Joints were modeled as mathematical constraints. Figure 7 shows the DOF and loads needed to define these constraints. The journal, modeled as a single point at the apex of the support truss, can rotate and displace in all directions. The DOF and the loads at the journal can be related to the DOF and the loads at the end plate attachment point. The attachment point is the location where the support shaft is connected to the end plate. The mathematical constraints between DOF and loads at the journal, and DOF and loads at the attachment point, comprise the joint model.

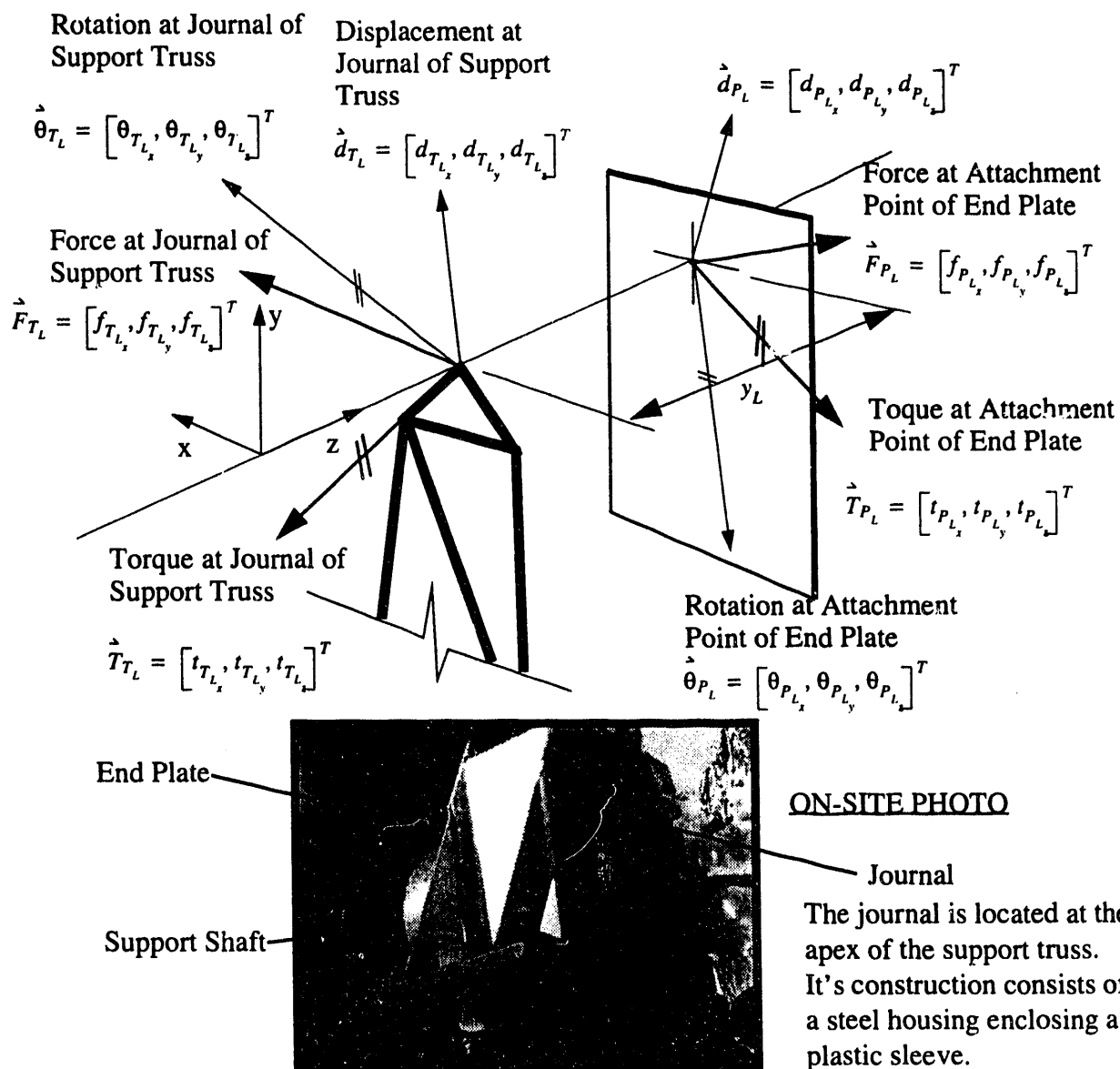


Figure 7. Joint Constraint Conditions for Left Joint.

Since rotations in the x and y directions are not significantly large, it was assumed that support shafts were always parallel to the z axis. Therefore, a joint can be modeled by equating displacements and rotations in the x and y directions, allowing rotations in z direction to be free, and relating displacements in the z direction via a nonlinear constraint equation representing journal/stop interactions. If the rotation, displacement, force, and

torque at and on the journal of the left support truss is given by  $\dot{\theta}_{T_L} = [\theta_{T_{L_x}}, \theta_{T_{L_y}}, \theta_{T_{L_z}}]^T$ ,

$\dot{d}_{T_L} = [d_{T_{L_x}}, d_{T_{L_y}}, d_{T_{L_z}}]^T$ ,  $\vec{F}_{T_L} = [f_{T_{L_x}}, f_{T_{L_y}}, f_{T_{L_z}}]^T$ , and  $\vec{T}_{T_L} = [t_{T_{L_x}}, t_{T_{L_y}}, t_{T_{L_z}}]^T$  respectively, and if the rotation, displacement, force, and torque at and on the attachment point of the left end plate is given by  $\dot{\theta}_{P_L} = [\theta_{P_{L_x}}, \theta_{P_{L_y}}, \theta_{P_{L_z}}]^T$ ,  $\dot{d}_{P_L} = [d_{P_{L_x}}, d_{P_{L_y}}, d_{P_{L_z}}]^T$

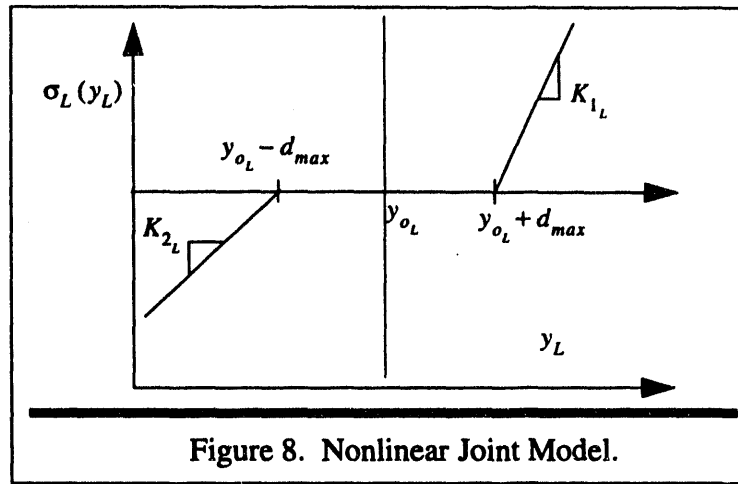
$\vec{F}_{P_L} = [f_{P_{L_x}}, f_{P_{L_y}}, f_{P_{L_z}}]^T$ , and  $\vec{T}_{P_L} = [t_{P_{L_x}}, t_{P_{L_y}}, t_{P_{L_z}}]^T$ , and if the variable  $y_L$  is the z-displacement between the journal of the support truss and its attachment point, then the mathematical constraints describing the left joint are given by

$$\dot{X}_{T_{2_L}} = \dot{X}_{m_1}, \quad \vec{F}_{T_{2_L}} = -\vec{F}_{m_1}, \quad (\text{Eq. 1})$$

where

$$\begin{aligned} \dot{X}_{T_{2_L}} &= [\theta_{T_{L_x}}, \theta_{T_{L_y}}, d_{T_{L_x}}, d_{T_{L_y}}]^T, \\ \dot{X}_{m_1} &= [\theta_{P_{L_x}}, \theta_{P_{L_y}}, d_{P_{L_x}}, d_{P_{L_y}}]^T, \\ \vec{F}_{T_{2_L}} &= [t_{T_{L_x}}, t_{T_{L_y}}, f_{T_{L_x}}, f_{T_{L_y}}]^T, \\ \vec{F}_{m_1} &= [t_{P_{L_x}}, t_{P_{L_y}}, f_{P_{L_x}}, f_{P_{L_y}}]^T, \\ \vec{F}_{T_{3_L}} &= [f_{T_{L_z}}] = -[f_{P_{L_z}}] = -\vec{F}_{m_3} = \sigma_L(y_L) + \delta_L(\dot{y}_L, y_L). \end{aligned} \quad (\text{Eq. 2})$$

The nonlinear functions  $\sigma_L(y_L)$  and  $\delta_L(\dot{y}_L, y_L)$  are force/displacement relationships which will be discussed below. The variables  $\vec{F}_{m_1}$ ,  $\vec{F}_{m_3}$ ,  $\vec{F}_{T_{2_L}}$ ,  $\vec{F}_{T_{3_L}}$ ,  $\dot{X}_{T_{2_L}}$  and  $\dot{X}_{m_1}$  are also defined above for later use. Again, since the left and right joints are dynamically identical, the constraint equations for the right joint are the same as those for the left joint except that the subscript  $L$  is replaced by the subscript  $R$ .



The function  $\sigma_L(y_L)$  is the force/displacement relationship for a journal sliding on a frictionless shaft whose motion is limited by stops at  $y_{o_L} - d_{max}$  and  $y_{o_L} + d_{max}$  where  $y_{o_L}$  is the mean distance between stops. When the journal is not in contact with a stop, no force is produced. When the journal is in contact with a stop, the support shaft elongates by  $\delta l$ . The force produced by this elongation is  $K_{1_L} \delta l$  or  $K_{2_L} \delta l$  where  $K_{1_L}$  is the contact stiffness for the stop at  $y_{o_L} + d_{max}$  and  $K_{2_L}$  is the contact stiffness for the stop at  $y_{o_L} - d_{max}$ . These two stiffness are given by  $lE/A$  where  $l$  is the length of the support shaft in stress,  $E$  is Young's Modulus, and  $A$  is the cross sectional area of the support shaft. Strictly speaking, two stiffnesses are required since different lengths of the support shaft are stressed relative to which stop is in contact with the journal. Nevertheless, since these stiffnesses were similar, their values were assumed equal. A graphical representation of this force/displacement relationship is shown in Figure 8.

The function  $\delta_L(\dot{y}_L, y_L)$  is the force/displacement relationship for stick/slip friction between the journal and the support shaft. This friction is not only dependent upon joint location, but also upon relative joint velocity.

When the relative velocity between the joint and shaft is zero, friction is equal to that required to resist slip. Numerically this can be approximated via a very stiff spring (in the infinite limit the approximation is exact). When friction exceeds the coefficient of static friction,  $\mu_s$ , times supported weight,  $W$ , its value is reduced to the coefficient of kinetic friction,  $\mu_k$ , times supported weight. Therefore, its magnitude is always bounded. A block diagram representation of these dynamics is shown in Figure 9.

Friction in the left and right joints is different considering that the weight that each support truss carries is different. If the modeled solar collector is attached at the end of a row of collectors, the weight that the left support truss carries will be half the weight of the modeled trough assemble, whereas the weight which the right support truss carries will be half the weight of the modeled trough assemble plus half the weight of the trough assemble of the next collector in the row.

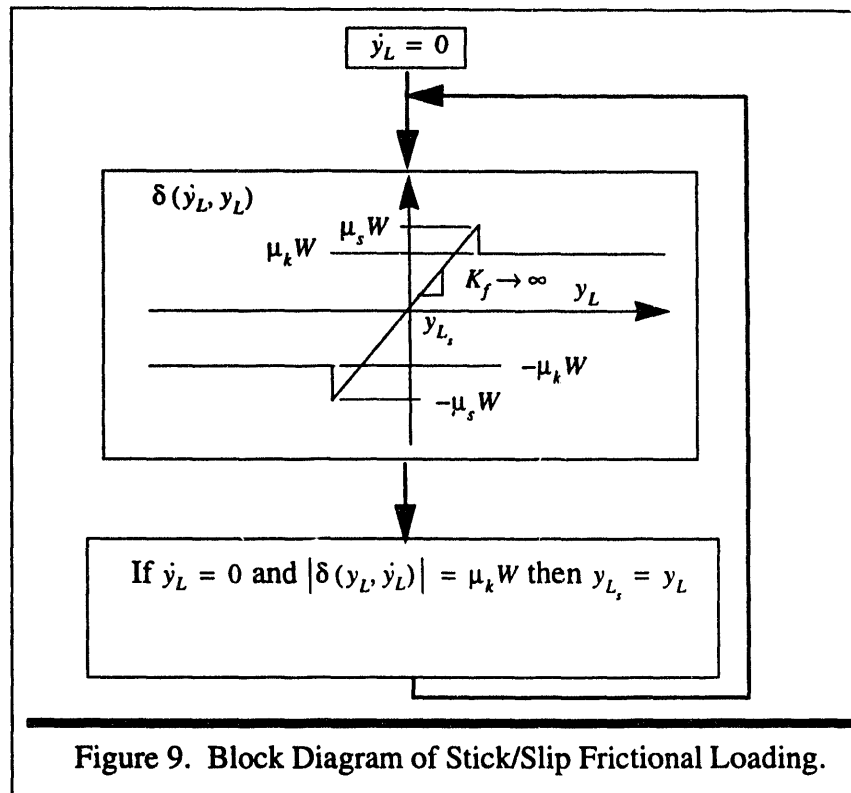


Figure 9. Block Diagram of Stick/Slip Frictional Loading.

The coefficients of static and kinetic friction at the time of the Landers' quake are unknown. Therefore,  $\mu_s$  and  $\mu_k$  can only be approximated. The coefficient of static friction was determined from the coefficient of kinetic friction via the assumed relationship,  $\mu_s = 1.5\mu_k$ . This relationship was made for lack of a better alternative. The coefficient of kinetic friction was determined via numerical iteration. If  $\mu_k$  is large, there will be no relative motion between the journal and the support shaft. As  $\mu_k$  is decreased, more motion will occur. At the time of the Lander's quake, the relative motion between the journal and support shaft had to be at least 4" for the joint to fail. Therefore,  $\mu_k$  was decreased until 4" of relative motion occurred. This represented the maximum possible amount of joint friction under assumed conditions.

## 2.2 FE Model Reduction

Without model reduction, the number of DOF in the unified model would be excessive. A non-reduced assembled model would contain over 8560 DOF. A model of this order, using direct simulation,<sup>5</sup> will require excessive cpu time. Thus, to reduce cpu run

5. Direct simulation means that all DOF are calculated during numerical integration.



time, model reduction was performed. The preferred method of model reduction is Craig-Bampton.<sup>7</sup> A brief overview of this method is found in Appendix A.

Numerically, this reduction was performed in NASTRAN via D-mapping and the results transferred into MATLAB via the NASMAT translator. Numerical simulations were performed in MATLAB.

## 2.3 Substructure Assembly

Three FE substructure models underwent model reduction. These models were the left support truss model, the right support truss model, and the trough assembly model.

The reduced second order matrix equation for the dynamics of the left support truss is given by

$$\begin{bmatrix} m_{T_{11}} & m_{T_{12}} & m_{T_{13}} & m_{T_{14}} \\ m_{T_{21}} & m_{T_{22}} & m_{T_{23}} & m_{T_{24}} \\ m_{T_{31}} & m_{T_{32}} & m_{T_{33}} & m_{T_{34}} \\ m_{T_{41}} & m_{T_{42}} & m_{T_{43}} & m_{T_{44}} \end{bmatrix} \begin{bmatrix} \ddot{X}_{T_{1L}} \\ \ddot{X}_{T_{2L}} \\ \ddot{X}_{T_{3L}} \\ \ddot{X}_{T_{4L}} \end{bmatrix} + \begin{bmatrix} k_{T_{11}} & k_{T_{12}} & k_{T_{13}} & k_{T_{14}} \\ k_{T_{21}} & k_{T_{22}} & k_{T_{23}} & k_{T_{24}} \\ k_{T_{31}} & k_{T_{32}} & k_{T_{33}} & k_{T_{34}} \\ k_{T_{41}} & k_{T_{42}} & k_{T_{43}} & k_{T_{44}} \end{bmatrix} \begin{bmatrix} \dot{X}_{T_{1L}} \\ \dot{X}_{T_{2L}} \\ \dot{X}_{T_{3L}} \\ \dot{X}_{T_{4L}} \end{bmatrix} = \begin{bmatrix} \dot{F}_{T_{1L}} \\ \dot{F}_{T_{2L}} \\ \dot{F}_{T_{3L}} \\ 0 \end{bmatrix}$$

where

- $\ddot{X}_{T_{1L}}$  - are DOF in the left support truss model representing displacements and accelerations at the concrete foundation,
- $\ddot{X}_{T_{2L}}$  - are DOF in the left support truss model to be equated to DOF in the trough assembly model (Equation 1),
- $\ddot{X}_{T_{3L}}$  - are DOF in the left support truss model to be coupled to DOF in the trough assembly model via the nonlinear functional relationships  $\sigma_L(y_L)$  and  $\sigma_L(y_L, y_L)$  (Equation 2),
- $\ddot{X}_{T_{4L}}$  - are generalized DOF in the left support truss model which can be used for model reduction.

The subscript  $L$  represents the left truss. If the subscript  $L$  is replaced by the subscript  $R$  the equations for the dynamics of the right truss result.

7. R.R. Craig, Jr, Structural Dynamics, *An Introduction to Computer Methods*, John Wiley & Sons, New York, NY, 1981, pp. 475-478.

Since  $\vec{X}_{T_{1L}}$  and  $\vec{X}_{T_{1L}}$  are known inputs (the Barstow measurements), the above equation can be written as

$$\begin{bmatrix} m_{T_{22}} & m_{T_{23}} & m_{T_{24}} \\ m_{T_{32}} & m_{T_{33}} & m_{T_{34}} \\ m_{T_{42}} & m_{T_{43}} & m_{T_{44}} \end{bmatrix} \begin{bmatrix} \vec{X}_{T_{2L}} \\ \vec{X}_{T_{3L}} \\ \vec{X}_{T_{4L}} \end{bmatrix} + \begin{bmatrix} k_{T_{22}} & k_{T_{23}} & k_{T_{24}} \\ k_{T_{32}} & k_{T_{33}} & k_{T_{34}} \\ k_{T_{42}} & k_{T_{43}} & k_{T_{44}} \end{bmatrix} \begin{bmatrix} \vec{X}_{T_{2L}} \\ \vec{X}_{T_{3L}} \\ \vec{X}_{T_{4L}} \end{bmatrix} = \begin{bmatrix} \vec{F}_{T_{2L}} \\ \vec{F}_{T_{3L}} \\ 0 \end{bmatrix} - \begin{bmatrix} m_{T_{21}} & k_{T_{21}} \\ m_{T_{31}} & k_{T_{31}} \\ m_{T_{41}} & k_{T_{41}} \end{bmatrix} \begin{bmatrix} \vec{X}_{T_{1L}} \\ \vec{X}_{T_{1L}} \end{bmatrix} \quad (\text{Eq. 3})$$

where all forcing functions are now on the right hand side.

The reduced second order matrix equation for the dynamics of the trough assembly is given by

$$\begin{bmatrix} m_{m_{11}} & m_{m_{12}} & m_{m_{13}} & m_{m_{14}} & m_{m_{15}} \\ m_{m_{21}} & m_{m_{22}} & m_{m_{23}} & m_{m_{24}} & m_{m_{25}} \\ m_{m_{31}} & m_{m_{32}} & m_{m_{33}} & m_{m_{34}} & m_{m_{35}} \\ m_{m_{41}} & m_{m_{42}} & m_{m_{43}} & m_{m_{44}} & m_{m_{45}} \\ m_{m_{51}} & m_{m_{52}} & m_{m_{53}} & m_{m_{54}} & m_{m_{55}} \end{bmatrix} \begin{bmatrix} \vec{X}_{m_1} \\ \vec{X}_{m_2} \\ \vec{X}_{m_3} \\ \vec{X}_{m_4} \\ \vec{X}_{m_5} \end{bmatrix} + \begin{bmatrix} k_{m_{11}} & k_{m_{12}} & k_{m_{13}} & k_{m_{14}} & k_{m_{15}} \\ k_{m_{21}} & k_{m_{22}} & k_{m_{23}} & k_{m_{24}} & k_{m_{25}} \\ k_{m_{31}} & k_{m_{32}} & k_{m_{33}} & k_{m_{34}} & k_{m_{35}} \\ k_{m_{41}} & k_{m_{42}} & k_{m_{43}} & k_{m_{44}} & k_{m_{45}} \\ k_{m_{51}} & k_{m_{52}} & k_{m_{53}} & k_{m_{54}} & k_{m_{55}} \end{bmatrix} \begin{bmatrix} \vec{X}_{m_1} \\ \vec{X}_{m_2} \\ \vec{X}_{m_3} \\ \vec{X}_{m_4} \\ \vec{X}_{m_5} \end{bmatrix} = \begin{bmatrix} \vec{F}_{m_1} \\ \vec{F}_{m_2} \\ \vec{F}_{m_3} \\ \vec{F}_{m_4} \\ 0 \end{bmatrix} \quad (\text{Eq. 4})$$

where

- $\vec{X}_{m_1}$  - are DOF in the trough assembly model to be equated to DOF in the left support truss model,
- $\vec{X}_{m_2}$  - are DOF in the trough assembly model to be equated to DOF in the right support truss model,
- $\vec{X}_{m_3}$  - are DOF in the trough assembly model to be coupled to DOF in the left support model by the nonlinear functions  $\sigma_L(y_L)$  and  $\sigma_L(y_L, y_L)$ ,
- $\vec{X}_{m_4}$  - are DOF in the trough assembly model to be coupled to DOF in the right support model by the nonlinear function  $\sigma_R(y_R)$  and  $\sigma_R(y_R, y_R)$ ,
- $\vec{X}_{m_5}$  - are generalized DOF.

To couple equation (3) to equation (4), equations (1, 2, 3) are used. This results in a combined relation as follows.

$$\begin{bmatrix}
m_{m_{11}} + m_{T_{22}} & m_{m_{12}} & m_{m_{13}} & m_{m_{14}} & m_{m_{15}} & m_{T_{23}} & m_{T_{24}} & 0 & 0 \\
m_{m_{21}} & m_{m_{22}} + m_{T_{22}} & m_{m_{23}} & m_{m_{24}} & m_{m_{25}} & 0 & 0 & m_{T_{23}} & m_{T_{24}} \\
m_{m_{31}} & m_{m_{32}} & m_{m_{33}} & m_{m_{34}} & m_{m_{35}} & 0 & 0 & 0 & 0 \\
m_{m_{41}} & m_{m_{42}} & m_{m_{43}} & m_{m_{44}} & m_{m_{45}} & 0 & 0 & 0 & 0 \\
m_{m_{51}} & m_{m_{52}} & m_{m_{53}} & m_{m_{54}} & m_{m_{55}} & 0 & 0 & 0 & 0 \\
m_{T_{32}} & 0 & 0 & 0 & 0 & m_{T_{33}} & m_{T_{34}} & 0 & 0 \\
m_{T_{42}} & 0 & 0 & 0 & 0 & m_{T_{43}} & m_{T_{44}} & 0 & 0 \\
0 & m_{T_{32}} & 0 & 0 & 0 & 0 & 0 & m_{T_{33}} & m_{T_{34}} \\
0 & m_{T_{42}} & 0 & 0 & 0 & 0 & 0 & m_{T_{43}} & m_{T_{44}}
\end{bmatrix}
\begin{bmatrix}
\dot{X}_{m_1} \\
\dot{X}_{m_2} \\
\dot{X}_{m_3} \\
\dot{X}_{m_4} \\
\dot{X}_{m_5} \\
\dot{X}_{T_{3L}} \\
\dot{X}_{T_{4L}} \\
\dot{X}_{T_{3R}} \\
\dot{X}_{T_{4R}}
\end{bmatrix}$$

$$+ \begin{bmatrix}
k_{m_{11}} + k_{T_{22}} & k_{m_{12}} & k_{m_{13}} & k_{m_{14}} & k_{m_{15}} & k_{T_{23}} & k_{T_{24}} & 0 & 0 \\
k_{m_{21}} & k_{m_{22}} + k_{T_{22}} & k_{m_{23}} & k_{m_{24}} & k_{m_{25}} & 0 & 0 & k_{T_{23}} & k_{T_{24}} \\
k_{m_{31}} & k_{m_{32}} & k_{m_{33}} & k_{m_{34}} & k_{m_{35}} & 0 & 0 & 0 & 0 \\
k_{m_{41}} & k_{m_{42}} & k_{m_{43}} & k_{m_{44}} & k_{m_{45}} & 0 & 0 & 0 & 0 \\
k_{m_{51}} & k_{m_{52}} & k_{m_{53}} & k_{m_{54}} & k_{m_{55}} & 0 & 0 & 0 & 0 \\
k_{T_{32}} & 0 & 0 & 0 & 0 & k_{T_{33}} & k_{T_{34}} & 0 & 0 \\
k_{T_{42}} & 0 & 0 & 0 & 0 & k_{T_{43}} & k_{T_{44}} & 0 & 0 \\
0 & k_{T_{32}} & 0 & 0 & 0 & 0 & 0 & k_{T_{33}} & k_{T_{34}} \\
0 & k_{T_{42}} & 0 & 0 & 0 & 0 & 0 & k_{T_{43}} & k_{T_{44}}
\end{bmatrix}
\begin{bmatrix}
\dot{X}_{m_1} \\
\dot{X}_{m_2} \\
\dot{X}_{m_3} \\
\dot{X}_{m_4} \\
\dot{X}_{m_5} \\
\dot{X}_{T_{3L}} \\
\dot{X}_{T_{4L}} \\
\dot{X}_{T_{3R}} \\
\dot{X}_{T_{4R}}
\end{bmatrix}
=$$

$$\begin{bmatrix}
-m_{T_{21}} & -k_{T_{21}} & 0 & 0 \\
0 & 0 & -m_{T_{21}} & -k_{T_{21}} \\
0 & 0 & 0 & 0 \\
0 & 0 & 0 & 0 \\
0 & 0 & 0 & 0 \\
-m_{T_{31}} & -k_{T_{31}} & 0 & 0 \\
-m_{T_{41}} & -k_{T_{41}} & 0 & 0 \\
0 & 0 & -m_{T_{31}} & -k_{T_{31}} \\
0 & 0 & -m_{T_{41}} & -k_{T_{41}}
\end{bmatrix}
\begin{bmatrix}
\dot{X}_{T_{3L}} \\
\dot{X}_{T_{4L}} \\
\dot{X}_{T_{3R}} \\
\dot{X}_{T_{4R}}
\end{bmatrix}
+ \begin{bmatrix}
0 & 0 \\
0 & 0 \\
-I & 0 \\
0 & -I \\
0 & 0 \\
I & 0 \\
0 & I \\
0 & 0 \\
0 & 0
\end{bmatrix}
\begin{bmatrix}
\dot{F}_{T_{3L}} \\
\dot{F}_{T_{3R}}
\end{bmatrix}$$

(Eq. 5)

$$y = \begin{bmatrix} y_L \\ y_R \end{bmatrix} = \begin{bmatrix} 0 & 0 & I & 0 & 0 & -I & 0 & 0 & 0 \\ 0 & 0 & 0 & I & 0 & 0 & 0 & -I & 0 \end{bmatrix} \dot{\bar{X}} = Q \dot{\bar{X}} \quad , \quad (\text{Eq. 6})$$

$$\dot{\bar{X}} = \begin{bmatrix} \dot{\bar{X}}_{m_1}^T & \dot{\bar{X}}_{m_2}^T & \dot{\bar{X}}_{m_3}^T & \dot{\bar{X}}_{m_4}^T & \dot{\bar{X}}_{m_5}^T & \dot{\bar{X}}_{T_{3_L}}^T & \dot{\bar{X}}_{T_{4_L}}^T & \dot{\bar{X}}_{T_{3_R}}^T & \dot{\bar{X}}_{T_{4_R}}^T \end{bmatrix}^T$$

where for this problem,  $\dot{\bar{X}}_{m_1}^T, \dot{\bar{X}}_{m_2}^T, \dot{\bar{X}}_{m_3}^T, \dot{\bar{X}}_{m_4}^T, \dot{\bar{X}}_{m_5}^T, \dot{\bar{F}}_{T_{3_L}}^T, \dot{\bar{F}}_{T_{3_R}}^T, I \in R^{1 \times 1}$  and the Cs take appropriate dimensions.

Written in condensed notation, equations (5) and (6) become  $M \ddot{\bar{X}} + K \dot{\bar{X}} = R \dot{\bar{u}} + D \dot{\bar{F}}$

and  $y = Q \dot{\bar{X}}$  where  $\dot{\bar{u}} = \begin{bmatrix} \dot{\bar{X}}_{T_{1_L}}^T & \dot{\bar{X}}_{T_{1_L}}^T & \dot{\bar{X}}_{T_{1_R}}^T & \dot{\bar{X}}_{T_{1_R}}^T \end{bmatrix}^T$  and  $\dot{\bar{F}} = \begin{bmatrix} \dot{\bar{F}}_{T_{3_L}}^T & \dot{\bar{F}}_{T_{3_R}}^T \end{bmatrix}^T = \begin{bmatrix} \dot{f}_{T_{3_L}} & \dot{f}_{T_{3_R}} \end{bmatrix}^T$ . This can be

collapsed into state space form as  $\dot{\bar{x}} = A \bar{x} + B_u \dot{\bar{u}} + B_F \dot{\bar{F}}$ ,  $y = C \bar{x}$ , and  $\dot{y} = C_v \bar{x}$  where

$$\dot{\bar{x}} = \begin{bmatrix} \dot{\bar{X}} \\ \dot{\bar{X}} \end{bmatrix}, A = \begin{bmatrix} 0 & I \\ -M^{-1}K & 0 \end{bmatrix}, B_u = \begin{bmatrix} 0 \\ M^{-1}R \end{bmatrix}, B_F = \begin{bmatrix} 0 \\ M^{-1}D \end{bmatrix}, C = [Q \ 0], C_v = [0 \ Q] \text{ and again the}$$

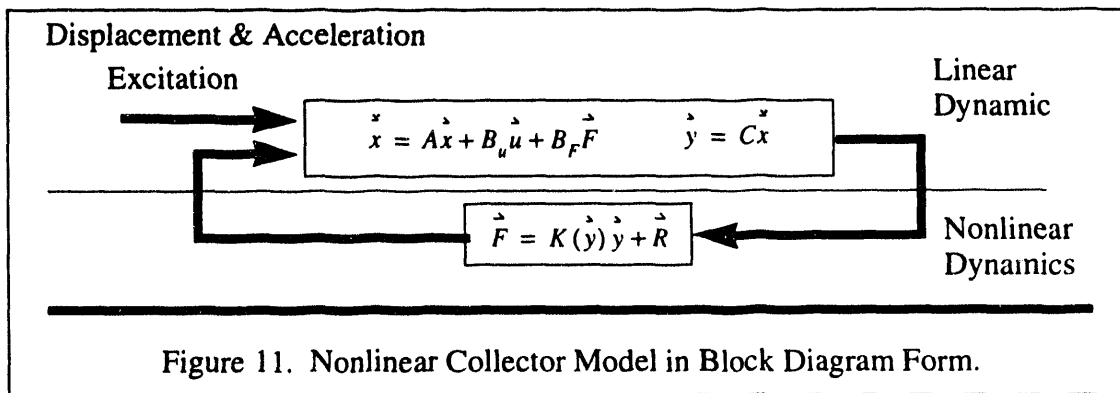
Os take appropriate dimensions. This state space relationship includes all the dynamics of the linear portion of the system.

Nonlinear joint dynamics,

$$\dot{\bar{F}} = \begin{bmatrix} \dot{f}_{T_{3_L}} \\ \dot{f}_{T_{3_R}} \end{bmatrix} = \begin{bmatrix} \sigma_L(y_L) \\ \sigma_R(y_R) \end{bmatrix} + \begin{bmatrix} \delta_L(y_L, y_L) \\ \delta_R(y_R, y_R) \end{bmatrix} = K(\dot{y}) \dot{y} + \dot{R}$$

can be implemented using joint constraint conditions given in Figures 9 and 10.

The assembled collector model can be drawn in block diagram form as shown in Figure 11.



As shown in this diagram, nonlinear dynamics and linear dynamics can be separated into feedback and feedforward blocks. As discussed above, model reduction was used to reduce the order of all linear dynamics. Nonlinear dynamics were already of low order. Thus, the assembled model was of low order. The assembled model is given by

$$\dot{\vec{x}} = (A + B_F K(y)(C)) \vec{x} + B_u \dot{\vec{u}} + B_F \dot{\vec{R}}. \quad (\text{Eq. 7})$$

During simulations, equation (7) was updated every time step.

Also during simulations, variable time steps were used. Variability in time step was required since journal/stop impacts produced high frequency dynamics which could throw the numerical simulation into instability. When the journals and stops were far from contact, long time steps were used, and when the journal and stops were in or near contact, short time steps were used. Stability was also constrained by the stiffnesses used to impose stop conditions. The proper selection of these stiffnesses could only be determined by iteration.

### 3. RESULTS

The section below presents results on model reduction errors and collector dynamics.

#### 3.1 Model Reduction Error

The assembled model was only 40th order. The natural frequencies of each reduced order models are given in Table 1.

Mode	Support Truss Model			Trough Assembly Model		
	Full order	Reduced Order	% Error	Full Order	Reduced Order	% Error
1	11.01 Hz	11.01 Hz	0.08%	9.94 Hz	10.17 Hz	2.32%
2	28.44 Hz	29.46 Hz	3.61%	11.53 Hz	11.55 Hz	0.12%
3	60.67 Hz	63.77 Hz	5.11%	12.01 Hz	12.38 Hz	3.10%
4	70.80 Hz	71.12 Hz	0.46%	16.39 Hz	15.88 Hz	3.16%
5	111.12 Hz	444.66 Hz	300.16%	16.41 Hz	16.31 Hz	0.61%
6	127.62 Hz	659.66 Hz	416.89%	16.53 Hz	16.39 Hz	0.85%

Table 1. Model Error.

As shown in Table 1, Craig-Bampton matches lower order modes to within 4%, whereas higher order modes were in substantial error. Since excitation frequencies were low (most of the structural energy was below 1Hz), accuracy was needed only at these lower order modes.

### 3.2 Collector Dynamics

Two joint configurations were studied. The first configuration lets  $d_{max}$  go to infinity (see Figure 9). This represents a Support Shaft with No Stops. This was the joint configuration during the Lander's quake. The second configuration assumes that  $d_{max} = 1"$ . This represents a Support Shaft with Stops at 1". This is the remedy proposed and implemented by the DLC. It was found that this was a sufficient remedy to the joint separation problem.

#### 3.2.1 Support Shaft with No Stops

The first configuration lets  $d_{max}$  go to infinity. This is a model of the joint as it existed during the Lander's quake. Figures 12 (a), (b), and (c) show collector response versus time for this joint configuration. Input excitation came from measured Barstow data.

In Figure 12(a), the distance between the center of the support shaft and the journal is shown. If the distance between the inner end of the journal and the outer end of the support shaft is less than 4", the journal and support shaft will separate. In this configuration, friction was not great enough to stop joint failure. Figure 12(c) shows relative displacement between mirror corners. This relative displacement was measured at the location of the largest relative displacement in the Figure 7 mode shape. To assure no mirror breakage, this displacement should be less than one inch. As shown in this plot, mirror breakage due to collision of mirrors will not occur.

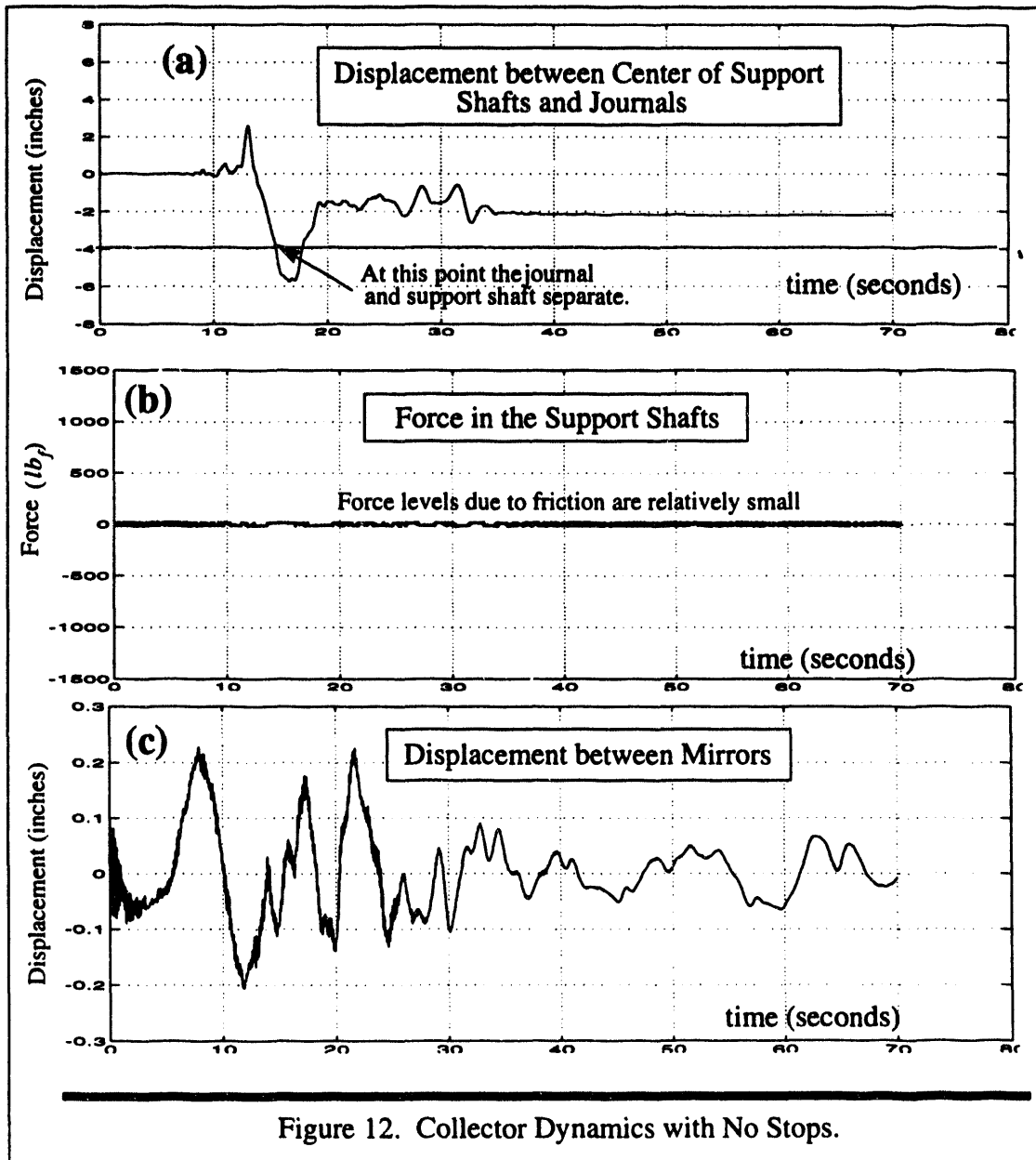
#### 3.2.2 Support Shaft with Stops at 1"

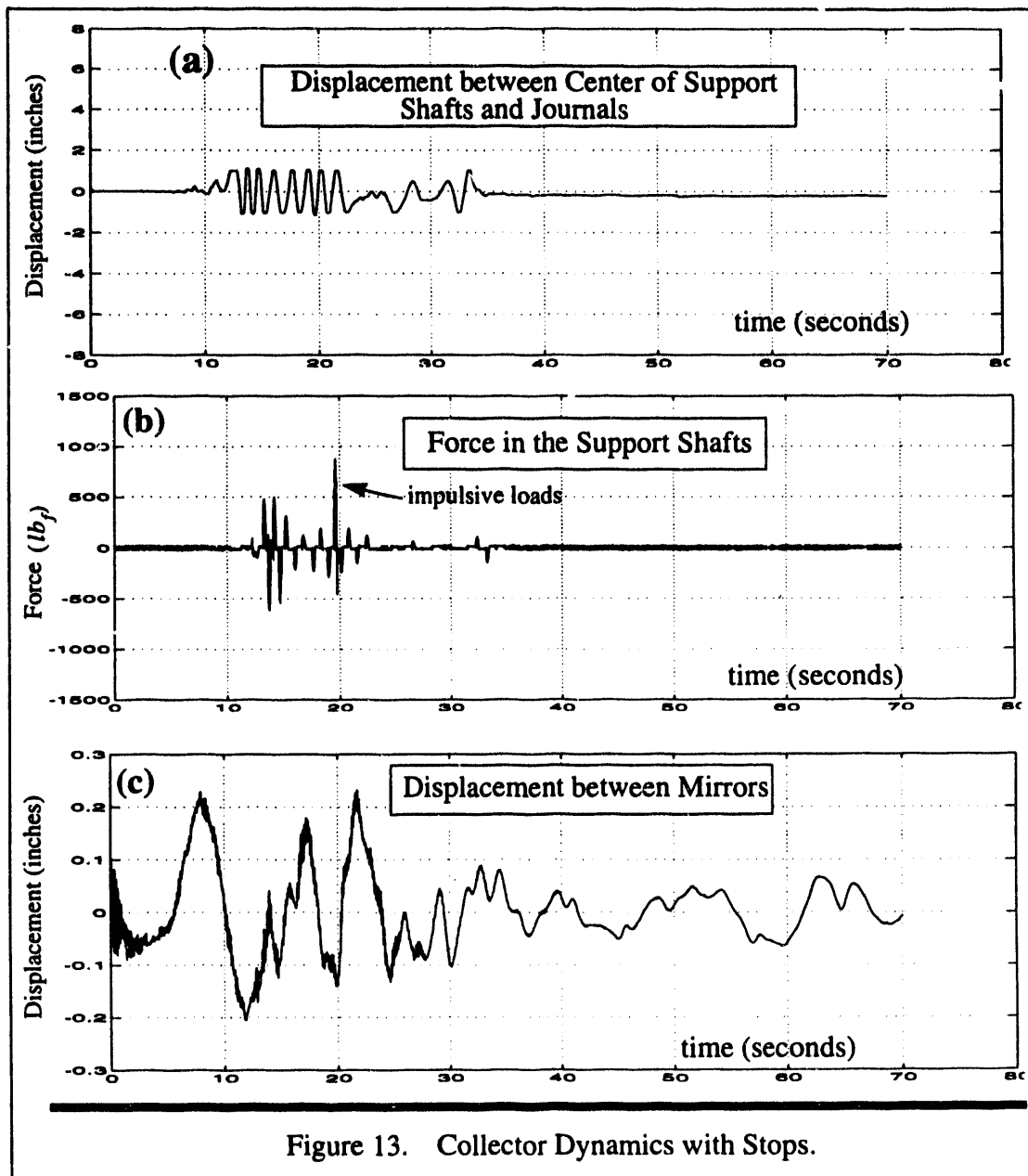
This joint configuration consists of a stop welded to the end of the support shaft which limits its travel to a maximum of one inch. Figures 13(a), (b), and (c) show responses for this configuration.

As shown in Figure 13(a), the 1" maximum displacement limit results in impulse loads occurring in the support shaft. These loadings represent the forces required to set the 1 ton trough assembly into motion. A stop placed 1" from the journal should have the ability to survive these high impact loads. As shown in Figure 13(b), the stop must be able to

withstand at least a 1000  $\text{lb}_f$  load. This is a very approximate answer considering that numerically it is difficult to produce an impulse function. Therefore, an adequate safety factor should be applied (~2-4).

As shown in Figure 13(c), even with impact loading, the mirrors will not break.







#### **4. CONCLUSIONS**

The purpose of this project was to redesign collector joints so that joint separation and costly breakage would not occur. Since a remedy to the joint separation problem had already been implemented, it was necessary to determine the sufficiency of this remedy before further redesign. For structural integrity purposes, this remedy is sufficient.

Assuming the validity of assumptions made within this report, the implementation of metal stops welded to the support shaft is a suitable solution to the joint separation problem when the stops are 1" from the journal. Stops must withstand loads of over 1000lb<sub>f</sub>.

Another concern in this analysis was the breakage of the mirrors due to enhanced vibration in the trough assembly. It was found that the addition of stops produced little change in mirror dynamics. Mirror breakage is unlikely.

## APPENDIX A - Model Reduction using Craig-Bampton

When performing model reduction, some DOF are eliminated from the FE model, while others are preserved. If  $\dot{\bar{u}}_p \in R^{N_p \times 1}$  contains all DOF to be preserved while  $\dot{\bar{u}}_p^- \in R^{N_p^- \times 1}$  contains all other DOF, then the DOF of the FE model are given by  $\begin{bmatrix} \dot{\bar{u}}_p^T & \dot{\bar{u}}_p^{-T} \end{bmatrix}^T$ . In Craig-Bampton, a transformation matrix,  $T$ , is produced such that

$$\begin{bmatrix} \dot{\bar{u}}_p \\ \dot{\bar{u}}_p^- \end{bmatrix} = T \begin{bmatrix} \dot{\bar{u}}_p \\ \dot{\bar{u}}_g \end{bmatrix}$$

where  $\bar{u}_g$  are a set of ordered generalized coordinates whose truncation will reduce model order.

The generalized coordinates,  $\bar{u}_g$ , are determined by constraining  $\bar{u}_p = 0$  and transforming resulting system dynamics into modal coordinates. That is, if the FE model is given by

$$\begin{bmatrix} M_{11} & M_{12} \\ M_{21} & M_{22} \end{bmatrix} \begin{bmatrix} \dot{\bar{u}}_p \\ \dot{\bar{u}}_p^- \end{bmatrix} + \begin{bmatrix} K_{11} & K_{12} \\ K_{21} & K_{22} \end{bmatrix} \begin{bmatrix} \dot{\bar{u}}_p \\ \dot{\bar{u}}_p^- \end{bmatrix} = \begin{bmatrix} \dot{\bar{F}}_p \\ 0 \end{bmatrix}$$

then,  $\dot{\bar{u}}_g = \phi^T \dot{\bar{u}}_p^-$  where  $\{K_{22} - \omega_n^2 M_{22}\} \phi_n = 0$ , and  $\phi = [\phi_1, \phi_2, \phi_3 \dots \phi_{N_p^-}] \in R^{N_p^- \times N_p^-}$  for  $\omega_1 \leq \omega_2 \leq \omega_3 \dots \leq \omega_{N_p^-}$ . The vectors  $\phi_1$  to  $\phi_{N_p^-}$  are called the component modes.

These modes along with constraint modes,  $\Psi_n$ , will form a complete collection of basis functions for the FE model.<sup>8</sup> Constraint modes are determined by solving the  $n$  static problems given by the solution to the following problem statement

IF  $u_p(n)$  is the  $n^{th}$  element of  $\bar{u}_p$  then for  $u_p(n) = 1, u_p(m \neq n) = 0$ ,

FIND  $\bar{u}_p^- = \Psi_n$  for  $n, m = 1, 2, 3, \dots, N_p$  in the static case.

These  $N_p$  solutions are given by  $\Psi = -K_{11}^{-1} K_{12}$  where  $\Psi = [\Psi_1 \ \Psi_2 \ \dots \ \Psi_{N_p}]$ .

Therefore the transformation matrix,  $T$ , is given by

$$T = \begin{bmatrix} I & 0 \\ \Psi & \phi \end{bmatrix}$$

where  $0 \in R^{N_p^- \times N_p^-}$  is a zero matrix, and  $I \in R^{N_p \times N_p}$  is an identity matrix. Since  $\bar{u}_g$  is in modal coordinates, model reduction may be performed by simply eliminating the highest modes

---

8. This means that any response can be represented by the time weighted sum of the basis functions.

of  $\bar{u}_g$ . Therefore, for the truncated matrix  $\hat{u}_g \in R^{N_g \times 1}$ , and  $T \in R^{(N_p + N_g) \times (N_g + N_p)}$  where  $N_g < N_p$ , the reduced order model is given by

$$m_r \begin{bmatrix} u_p \\ u_g \end{bmatrix} + k_r \begin{bmatrix} u_p \\ u_g \end{bmatrix} = \begin{bmatrix} \hat{F}_p \\ 0 \end{bmatrix}$$

where  $m_r = T^T \begin{bmatrix} M_{11} & M_{12} \\ M_{21} & M_{22} \end{bmatrix} T$  ,  $k_r = T^T \begin{bmatrix} K_{11} & K_{12} \\ K_{21} & K_{22} \end{bmatrix} T$  ,  $m_r, k_r \in R^{(N_g + N_p) \times (N_g + N_p)}$  .

Distribution STDAC

AAI Corporation  
York Rd. & Industry Lane  
Cockeysville MD 21030-0126

Academy Research  
McI Herzog, Director  
PO Box 4996  
Scottsdale AZ 85261

Acurex Aerotherm  
H. Morse  
555 Clyde Avenue  
Mountain View CA 94039

Gary Adams Production Inc.  
Hilary Lipman  
1820 NW 26th  
Portland OR 97210

Adirondack Community College  
Prof. Sayeed Hasan  
Bay Road  
Queensberry NY 12804

Advanced Thermal Systems  
Dave Gorman  
7600 East Arapahoe Rd. Suite 215  
Englewood CO 80112

Advantage Hytek  
Orlo Hudson  
BettyJo Hudson  
8705 E. 63rd Traffic Way  
Kansas City MO 64133-4703

Alabama Power Co.  
J. G. Boyles  
PO Box 2641  
Birmingham AL 35291

Alabama Solar Energy Center  
Leonard Adcock  
University of Alabama in Huntsville  
Huntsville AL 35899

Alliance for Transportation Research  
Larry S. Blair  
Executive Vice President  
1001 University Blvd. SE, Suite 103  
Albuquerque, NM 87106-4342

Alliance for Transportation Research  
Michael W. Moulton  
Vice President - Engineering Research  
1001 University Blvd. SE, Suite 103  
Albuquerque, NM 87106-4342

American Energy Technologies, Inc.  
Steven K. Gorman  
3530 Enterprise Way  
Green Cove Springs FL 32043-1865

AMTECH  
Jeffrey Keating  
7441 NW 8th St. Bay M  
Miami FL 33126

Michelle Appenzeller  
5218 C. R. 218  
Middleburg FL 32068

Applied Concepts  
S. Pond  
2501 S. Larimer County Rd. 21  
Berthoud CO 80513

Applied Research Associates, Inc.  
4300 San Mateo NE, Suite A-220  
Albuquerque NM 87110

Aqua Vit Foundation  
Rob Sangster  
324 Wilkinson  
Memphis TN 38111

Argonne National Laboratory  
Materials and Components Technology Div.  
Robert E. Holtz  
9700 South Cass Avenue  
Argonne IL 60439

Arizona Department of Commerce  
Arizona Energy Office  
Frank P. Mancini, Ph.D.  
3800 N. Central, Suite 1200  
Phoenix AZ 85012

Arizona Department of Commerce  
Arizona Energy Office  
Jack Haenichen  
3800 N. Central, Suite 1200  
Phoenix AZ 85012

Arizona Public Service Co.  
Thomas C. Lepley  
J. McGuirk  
PO Box 53999  
Phoenix AZ 85072-3999

Arizona Public Service Company  
Peter E. Eckert  
1500 E. University  
Tempe AZ 85281

Arizona State University  
Paul Russell  
College of Engineering  
Tempe AZ 85287

Arizona State University  
College of Engineering and Applied Sciences  
Byard D. Wood, Ph.D., P.E.  
Director and Professor  
Tempe, AZ 87287-5806

The Arnorial Bearings of Tuthill  
Education/Development  
Jerry Tuttle, Ph.D.  
12305 Eastridge Dr. NE  
Albuquerque NM 87112

Ascension Technology  
Ed Kern  
Box 314  
Lincoln Center MA 01773

Augustyn & Company  
Jim Augustyn  
1029 Solano Ave., Suite C  
Albany CA 94706

Mr. Gene E. Austin  
8015 Steven Franklin  
Bartlett TN 38133

B&E Technical Services Inc.  
William R. Lang  
600 S. Cherry St. #325  
Denver CO 80222-1705

BDM International  
Tim Lambariski  
MS-C35B  
1801 Randolph SE  
Albuquerque NM 87106

Babcock & Wilcox  
Pat Bator  
20 S. Van Buren Ave.  
Barberton OH 44203

Barber-Nichols Engineering  
R. Barber  
6325 West 55th Ave.  
Arvada CO 80002

Battelle Memorial Institute  
Pacific Northwest Laboratory  
K. Drumheller  
4000 NE 41st St.  
Seattle WA 98105

Charles E. Baus  
Energy Policy Directorate  
Pentagon Room 1D760  
Washington DC 20301-8000

Bechtel Group, Inc.  
P. DeLaquil  
W. Stolle  
PO Box 3965  
50 Beale Street  
San Francisco CA 94119

Beckwith Electric Company  
R. W. Beckwith  
PO Box 2999  
Largo FL 34649-2999

Black & Veatch  
Sheldon Levy  
PO Box 8405  
Kansas City MO 64114

Boeing Engineering & Construction  
R. Gillette  
PO Box 3999  
Seattle WA 98124

Bonneville Power Admin.  
Minje Ghim  
PO Box 3621  
Portland OR 97208

Boston Edison Company  
Michael Mulcahy  
800 Boylston Street  
Boston MA 02199

Bresler & Reiner, Inc.  
Ahmed Haceri  
Waterside Mall  
401 M Street S.W.  
Washington, DC 20024

Brookhaven National Labs  
John Andrews  
National Center for Analysis of Energy Systems  
Upton NY 11973

Brown Bovcri Corporation  
1460 Livingston Avenue  
North Brunswick NJ 08902

Budd Company (The)  
John M. Vergoz  
3155 W. Big Beaver Road  
Troy MI 48084

Budd Company (The)  
Plastic R&D Center  
K. A. Iseler  
356 Executive Drive  
Troy MI 48084

California Polytechnic State University  
Dr. Safwat M.A. Moustafa, P.E.  
San Luis Obispo CA 93407

Cal Tech  
R. Middlebrook  
116-81 Cal Tech  
Pasadena CA 91125

California Energy Commission  
Alce Jenkins  
Promod Kulkarnj  
1516 - 9th Street  
Sacramento CA 95814

Cal Poly State University  
E. J. Carnegie  
San Luis Obispo CA 93407

California Institute of Technology Aeronautics Library  
Jean Anderson  
MS 205-45  
Pasadena CA 91125

California Polytechnic University  
Dept. of Mechanical Engineering  
W. B. Stine  
Pomona CA 91768-4062

Campbell Scientific, Inc.  
Neal L. Israelson  
PO Box 551  
Logan UT 84321

Carolina Power & Light Co.  
Kent Hoffman  
Center Plaza Bldg.  
PO Box 1551  
Raleigh NC 27602

Dr. Jamie Chapman  
Number 402  
15 Sleeper St.  
Boston MA 02210

Chicago Bridge and Iron  
J. M. Shah  
800 Jorie Blvd.  
Oak Brook IL 60521

City of Albuquerque  
Linda Stewart  
City Council  
PO Box 1293  
Albuquerque NM 87103

City of Albuquerque  
Mike Minturn  
Manager  
Resource Management Division  
General Services Department  
PO Box 1293  
Albuquerque NM 87103-1293

City of Austin Power & Light  
David Panico  
PO Box 1088  
Austin TX 78767

City of Las Cruces  
Jerry Trojan  
Assist. City Manager  
P.O. Drawer CLC  
Las Cruces NM 88004

Clarkson University  
Eric F. Thacher  
Dept. of Mechanical and Aeronautical Engrg.  
Potsdam NY 13699-5725

Clemson University  
Jay W. Lathrop  
Electrical Engr. Dept.  
Clemson SC 29631

Cleveland State University  
Peter Groumpos  
1983 East 24th Street  
Cleveland OH 44115

Florida Solar Energy Center  
Mark Thornbloom  
300 State Road 401  
Capa Canaveral FL 32920

Colorado State University  
Dr. Allan T. Kirkpatrick  
Department of Mechanical Engineering  
Fort Collins CO 80523

Colorado State University  
T. G. Lenz  
Ft. Collins CO 80523

Columbia Gas System Service Corp.  
J. Philip Dechow  
1600 Dublin Road  
Columbus OH 43215

Commonwealth of Virginia  
Department of Mines, Minerals, Energy  
James Smith  
The Bookbinder Building  
2201 West Broad St.  
Richmond VA 23220

Commonwealth of Virginia  
Department of Mines, Minerals, Energy  
Susie Thomas  
Ninth Street Office Blvd.  
8th Floor  
202 North North St.  
Richmond VA 23219

Computer Sciences Corporation  
Applied Technology Division  
Joel N. Chaffin  
John C. Stennis Space Center  
SSC MS 39529

D. Benoit  
RR3 Box 6897  
Barre VT 05641

Conserval Systems Inc.  
John C. Hollick, P.E.  
2211 Main St., Bldg B  
Buffalo NY 14214

Cons. Edison Co. of NY  
M. LeBow  
N. Tai  
Irving Place  
New York NY 10003

A. Cooley  
RR 3 Box 6897  
Barre VT 05641

County of Hawaii  
Steve Burns  
Dept. of Research and Development  
25 Aupuni Street  
Hilo HI 96720

Cummins Engine Company  
Dr. Isoroku Kubo  
Mail Code 50160  
Box 3005  
Columbus IN 47202-3005

Cummins Power Generation  
Monte McGlaun  
150 Tannerhil Dr  
Abilene TX 79602

Cygnus Engineering  
Vincent P. Dowd  
R.D. 3 Box 2527  
Middlebury VT 05753

D&T Solar  
Thomas Caldwell  
418 Vista Larga  
Los Lunas NM 87031

W. S. Davenport  
PO Box 29000  
Suite 261  
San Antonio TX 78229

Davex Enterprises, Inc.  
Fred R. Davis  
704 Vine St.  
Kent OH 44240

Dayton Power & Light Company  
S. K. Aventsens  
PO Box 1247  
Courthouse Plaza  
Dayton OH 45401

Detroit Edison Co.  
Bob Pratt  
2000 2nd Avenue  
Detroit MI 48226

Dinh Co. Inc.  
Khanh Dinh  
PO Box 999  
Alachua FL 32615

DKI Group Engineers, Inc.  
D. K. Gupta, President  
9-Turnberry Lane  
Clifton Park NY 12065

Dominion Energy Corp.  
John Frank  
PO Box 26532  
Richmond VA 23261

DSET  
G. A. Zerlaut  
Box 1850  
Black Canyon Stage I  
Phoenix AZ 85029

Donnelly Corporation  
M. DeVries  
49 West Third Street  
Holland MI 49423

Duke University  
T. C. Wilson  
Dept. of Elec. Engr.  
Durham NC 27706

Duquesne Light Co.  
J. L. Koepfinger  
One Oxford Center  
301 Grant Street  
Pittsburgh PA 15279

DynCorp Meridian  
Robert E. N. Muhn  
Technical Director, International Projects  
4300 King Street, Suite 400  
Alexandria, VA 22302-1508

Electric Ideas Clearinghouse  
Dr. Douglas Kilpatrick  
809 Legion Way SE FA-11  
Olympia WA 98504

EPRI  
Myron Jones  
3412 Hillview Ave  
PO Box 10412  
Palo Alto CA 94304-1395

EPA  
Jennifer Selber

EPRI  
Marty Mastroianni  
3412 Hillview Ave  
PO Box 10412  
Palo Alto CA 94303

Electric Power Research Inst.  
E. DeMeo  
J. Bigger  
3412 Hillview Avenue  
Palo Alto CA 94303

Electric Power Research Inst.  
Myron Jones  
Manager  
Environment & Energy Management  
3412 Hillview Avenue  
Palo Alto CA 94303

Electric Power Research Inst.  
Marty Mastroianni  
Commercialization manager  
Electrical Systems Division  
3412 Hillview Avenue  
Palo Alto CA 94303

Electric Research & Mgmt., Inc.  
W. E. Ferro  
PO Box 165  
State College PA 16804

Endecon  
Chuck Whittaker  
3401 Crown Canyon Rd  
Suite 253  
San Ramon CA 94583

Enercontrol Inc.  
David Konn  
2624 Lake Ridge  
Flower Mound TX 75028

Energy Concepts Co.  
Don Erickson  
627 Ridgely Ave.  
Annapolis MD 21401

Energy Information Services  
Energy, Minerals and Natural  
Resources Department  
Ingrid Kelley  
Bureau Chief  
2040 S. Pacheco  
Santa Fe NM 87505

Energy, Minerals and Natural  
Resources Department  
Judy Kowalski  
Director of Recycling Programs  
2040 S. Pacheco  
Santa Fe NM 87505

ECOTOPE  
Energy Efficient Solutions  
David R. Baylon  
2812 E. Madison  
Seattle WA 98112

Energy System Consultants  
Dana Sears  
1532 79th Avenue NE  
Brookland Park MN 55444



Enertec  
Don Cockran  
127 Andover Rd.  
Greenville SC 29615

Enigma Logic  
r.B. Swenson  
Chairman  
2151 Salvio, Suite 301  
Concord CA 94520

ENTECH, Inc.  
M. O'Neill  
PO Box 612246  
DFW Airport TX 75261

Environmental Laboratory  
John A. Dufay  
915 Locust St. SE  
Albuquerque NM 87106-4300

Environmental Technology &  
Education Center (ETEC)  
Jon Nimitz, Ph.D.  
3300 Mountain Road NE  
Albuquerque, NM 87106-1920

ESELCO  
Sheldon L. Levy  
8116 Fontana  
Prairie Village KS 66208

Eurodrive, Inc.  
30599 San Antonio Rd.  
Hayward CA 94544

FAFCO  
Freeman Ford  
2690 Middlefield Road  
Redwood City CA 94063

FAWP  
Curtis H. Taylor  
923 Old Bay Bridge Road  
Tallahassee FL 32303

Federal Conservation & Renewable Energy Referral  
Service  
PO Box 8900  
Silver Spring MD 20907

Federal Energy Management Activities  
CE 10.1  
U.S. Department of Energy  
1000 Independence Ave.  
Washington DC 20585

1606 Civil Engineering Squadron  
James Fejer  
Deputy Chief, Operations Branch  
1606 ABW/DEM  
Kirtland AFB NM 87117-5496

Larry Fite  
4197 Arrowood  
Memphis TN 38118

Florida Power Corp.  
Tony Padilla  
Christy Herig  
Jim Crews  
3201 34th Street South  
St. Petersburg FL 33711

Florida Power and Light  
R. S. Allan  
PO Box 14000  
Juno Beach FL 33408

Florida Power and Light  
E. A. Anderson, P.E.  
PO Box 561190  
Rockledge FL 32956

Florida Power and Light  
Gary L. Michel  
PO Box 529100  
Miami FL 33152

Florida Solar Energy Center  
Mark Thornbloom  
300 State Road 401  
Cape Canaveral FL 32920

Florida Solar Energy Center  
David Block  
Kirk Collier  
Jim Huggins  
John Harrison  
300 State Road 401  
Cape Canaveral FL 32920

Ford Motor Company  
Glass Div., Technical Center  
V. L. Lindberg  
25500 West Outer Drive  
Lincoln Park MI 48246

Foster Wheeler Solar Dev. Corp.  
M. D. Garber  
12 Peach Tree Hill Road  
Livingston NJ 07039

Harris Corporation  
Byron F. Knight  
Manager-Advanced Programs  
PO Box 91000  
Melbourne FL 32902-9100

Hilda Frazier DCA  
2740 Centerview Drive  
Tallahassee FL 32399-2100

Garrett Turbine Engine Co.  
Ed Strain  
111 South 34th Street  
PO Box 5217  
Phoenix AZ 85010

GE Energy Sys. Pro. Dept.  
Paul C. Bogiages  
1 River Road  
Bldg 5 Rm. 425  
Schenectady NY 12345

General Services Administration  
Dennis J. Jaromin  
Maintenance and Operations Foreman  
Sarah Cook House  
Lincoln Home Historic Site  
508 South Eighth Street  
Springfield, IL 62703

General Services Administration  
Bob Bausch  
Maintenance Mechanic  
Sarah Cook House  
Lincoln Home Historic Site  
508 South Eighth Street  
Springfield, IL 62703

Harper Lake  
Dianne Mathis, Production Manager  
43880 Harper Lake Road  
Hinkley, CA 92347

Hawai'i Energy Extension Service  
Andrea Gill Beck  
Department of Business and Economic Development  
Hawai'i Business Center  
99 Aupuni Street #214  
Hilo HI 96720

Hawai'i Energy Extension Service  
Catherine L. Robbins  
Department of Business, Economic Development and  
Tourism  
99 Aupuni Street #214  
Hilo HI 96720

Hawaii Solar Energy Association  
Ron Richmond  
PO Box 23350  
Honolulu Hawaii 96823

Heery Energy Consultants, Inc.  
Glenn Bellamy  
Project Energy Manager  
880 West Peachtree St. NW  
Atlanta GA 30309

Heliodyne, Inc.  
Jurg H. Bieri, Ph.D.  
4910 Seaport Ave.  
Richmond CA 94804

Heliotrope  
Dave Parks  
Malcolm Herbert  
3733 Kenora Drive  
Spring Valley CA 92077

Heliotrope  
3733 Kenora Drive  
Spring Valley CA 92077

Highland Plating  
M. Faith  
10001 N. Orange Drive  
Los Angeles CA 90038

Hiromi's Nursery  
Paul Mayeda  
41-732 Kakaina St.  
Waimanalo HI 96795

Hydrogen Engineering Associates  
Harry W. Braun  
PO Box 62892  
Phoenix AZ 85082

Hydrogen Engineering Associates  
Roy E. McAlister  
540 North May St. Suite 3078  
Mesa AZ 85201

Industrial Enterprises, Inc.  
Rex A. Martin  
500 Lyncrest Drive  
Lincoln NE 68510

Industrial Solar Technology  
Randy Gee  
5771 West 52nd Ave.  
Denver CO 80212

Industrial Solar Technology  
Ken May  
5771 West 52nd Ave.  
Denver CO 80212

Inner Solar Roof Systems, Inc  
Joseph Allegro  
731 N.E. 69th Street  
Boca Raton FL 33487

Institute of Gas Technology  
Library  
34245 State Street  
Chicago IL 60616

International Planning Assoc, Inc  
Editor  
807 Caddington Ave.  
Silver Spring MD 20901

Intersol Power Corporation  
John Sanders  
8590 S. Mariposa Dr.  
Morrison CO 80465-2424

Jacksonville Electric Authority  
George Rizk  
Box 53105  
Jacksonville FL 32201

Japan Economic Review  
Mike Turton  
National Press Building, Suite 830  
Washington DC 20045

Jet Propulsion Lab  
Ram Manvi  
MS 125-129  
40800 Oakgrove Dr.  
Pasadena CA 91109

L. Johnson, A. Cooley, & D. Benolt  
RR 3 Box 6897  
Barre VT 05641

Brian Jones  
200 Round Hill Drive  
Rockaway NJ 07566

Kenneth S. Jurman  
Institutional Conservation Program  
9th Street Office Building/8th Floor  
202 North Ninth Street  
Richmond VA 23219

K.C. Associates  
K.C. Warawa  
2026 Duncan Road  
Wilmington, DE 19808

Kansas City Power & Light  
David Martin  
PO Box 679  
Kansas City MO 64141

John F. Long Homes, Inc.  
R. K. (Casey) Kayes  
PO Box 14029  
Phoenix AZ 85063

Kearney & Associates  
David W. Kearney  
14022 Condessa Drive  
Del Mar CA 92014

Kirk Enterprises, Inc.  
Kirkland & Richards Solar & Elect.  
Gregory H. Kirkland  
PO Box 741  
Inglis FL 32649

KJC Operating Company  
Gilbert Cohen  
41100 Highway 395  
Boron CA 93516

Laguna Industries, Inc  
Larry Franzmeier  
#1 Mesita Industrial Parkway  
PO Box B  
Laguna NM 87026

Carlo LaPorta  
6503 81st St  
Cabin John, MD 20818-1204

Lawrence Berkeley Laboratory  
Dr. Arlon Hunt  
Building 90-2024  
University of California  
Cyclotron Road  
Berkeley CA 94720

Abbey Lewis  
8915 Henriette Wyeth NE  
Albuquerque NM 87122

Ted Lewis & Associates  
Edward G. Lewis  
556 East Gill Way  
Superior CO 80027

L'Garde Inc.  
Mitchell Thomas  
15181 Woodlawn Ave.  
Tustin CA 92680-6419

Lister Diesel, Inc.  
K. D. "Alfie" Pearson  
555 E. 56 Highway  
Olathe KS 66061

Long Island Lighting Co.  
Joseph Miller  
175 E. Old Country Road  
Hicksville NY 11801

Los Alamos National Laboratory  
Dr. Donald Neeper  
Staff Member  
Advanced Engineering Technology Group  
PO Box 1663, MS F576  
Los Alamos NM 87545

Los Alamos National Laboratory  
Taylor Van Buren  
Financial Analyst  
Industrial Partnership Center  
PO Box 1663, MS M899  
Los Alamos NM 87545

Lotus Concepts Limited  
George Wrigley/Jack Nilsson  
3 Stonegate Court  
Route 13, Box 181  
Easley SC 29640

Lower Colorado River Resource Conservation &  
Development Project  
Michael Forrest  
Coordinator  
1713 Kofa, Suite G  
Parker AZ 85344

John Lucas  
865 Canterbury Rd.  
San Marion CA 91108

M. K. Inc.  
James Koury  
4450 Indian Bend Dr.  
Whittier CA 90601

Malcolm R. MacPherson, Ph.D.  
Rt. 7, Box 128-MK  
Santa Fe NM 87505

McCarter Corporation  
R. A. Powell  
200 E. Washington St.  
PO Box 351  
Norristown PA 19404

McDonnell-Douglas Astronautics Company  
R. L. Gervais  
5301 Bolsa Avenue  
Huntington Beach CA 92647

McDonnell Douglas Aerospace  
Ken Stone  
Internal Mail Code A3/P520/11-3  
5301 Bolsa Ave.  
Huntington Beach, CA 92647-2048

McGraw Edison  
R. Dugan  
Power Systems Division  
Cannonsburg PA 15317

Pat Montoya  
State Issues Director  
625 Silver Ave SW Suite 130  
Albuquerque NM 87102

Pennsylvania State University  
Dr. Russell Messier  
Material Research Laboratory  
University Park PA 16802

McIntosh Middle School  
B. Milligan  
701 S. McIntosh  
Sarasota FL 34233

Mechanical Technology, Inc.  
G. R. Dochat  
968 Albany Shaker Road  
Latham NY 12110

Mendez Cattle Co.  
Marcos F. Mendez  
9500 N. Shelton Rd.  
Linden CA 95236

Meridian Corporation  
D. Kumar  
4300 King Street Suite 400  
Alexandria VA 22302-1508

Meridian Corporation  
Anil Cabraal  
4300 King Street Suite 400  
Alexandria VA 22302-1508

Metsat, Inc.  
Julie Smith  
515 South Howes  
Ft. Collins CO 80521

Michigan State University  
Jerry Park  
Elec. Engr. Dept.  
Engr. Bldg., Rm. 260  
East Lansing MI 48824

Midway Clinic  
Dr. Droblas  
11837 Merrian  
Livonia MI 48150

Midway Labs  
Paul Collard  
2255 East 75th Street  
Chicago IL 60649

Midwest Research Institute  
R. L. Martin  
425 Volker Blvd.  
Kansas City MO 64110

Jamie Miller  
553 Second St.  
Gambrills MD 21054

Minnesota Power Co.  
John Kappenman  
30 West Superior Street  
Duluth MN 55802

Mississippi Technology Transfer Center  
Clay Griffith  
Stennis NASA Center  
Bay St. Louis MS 39529

MIT  
J. G. Kassalkian  
M. F. Schlecht  
Elec. Power Systems Engr. Lab  
Cambridge MA 02139

Montana State University  
R. Johnson  
Dept. of Elec. Engr.  
Bozeman MT 59717

John G. Montgomery  
1106 Malgren Avenue  
San Pedro CA 90732

Dan Moon  
Virginia Department of Youth & Family Services  
Commonwealth of Virginia  
PO Box 3AG  
Richmond VA 23208-1108

Morning Star Enterprises  
Kent Knock, President  
PO Box 176  
Trumbull CT 06611

Moylan Engineering Assoc., Inc.  
W. J. Moyland  
13530 Michigan Avenue  
Suite 237  
Dearborn MI 48126

MRI Soleras  
Matthew S. Imamura  
425 Volker Boulevard  
Kansas City MO 64110

Multiarc Scientific Coating  
National Renewable Energy Lab  
John Webb  
1617 Cole Blvd.  
Golden CO 80401

National Renewable Energy Lab  
Jim Jones  
Russ Hewett  
1617 Cole Blvd.  
Golden CO 80401-3393

National Renewable Energy Lab  
Mary Jane Hale  
1617 Cole Blvd.  
Golden CO 80401

National Renewable Energy Lab  
Tom Williams  
1617 Cole Blvd.  
Golden CO 80401

National Concrete Masonry Association  
Bion D. Howard  
PO Box 781  
2302 Horse Pen Road  
Herndon VA 22070

Nature Conservancy  
Will Murray  
1815 N. Lynn Street  
Arlington VA 22209

Howard Nelson  
1024 Linda Lane  
Charlotte NC 28211

New Mexico Electric Cooperatives  
Robert E. Castillo  
Executive Vice President  
614 Don Gaspar  
Santa Fe NM 87501

New Mexico Home Builders Assn.  
Jack Milarch  
Executive VP  
5931 Office Blvd. NE  
Albuquerque NM 87109

New Mexico Institute of  
Mining & Technology  
Joe Galon  
Associate Director of Engineering  
Physical Plant Department  
Campus Station  
Socorro NM 87801

New Mexico R&D Forum  
University of New Mexico  
Richard Cole  
Director  
R&D Communication Office  
Albuquerque NM 87131-6076

New Mexico Public Service Commission  
Peter Bickley  
224 E. Palace Avenue  
Santa Fe NM 87501-2031

New Mexico Manufacturing Extension Program  
Ken Manicki  
Manufacturing Project Manager  
1009 Bradbury Dr. SE  
Albuquerque NM 87106

New Mexico Manufacturing  
Productivity Center  
Graham Bartlett  
1009 Bradbury Dr. SE  
Albuquerque NM 87106

NM Solar Energy Industries Association  
Tom Volck  
PO Box 90275  
Albuquerque NM 87199-0275

NASA/Lewis Research Center  
R. Corrigan  
Richard DeLombard  
21000 Brookpark Road  
Cleveland OH 44135

National Tech Transfer Center  
Wheeling Jesuit College  
316 Washington Ave.  
Wheeling WV 26003

Natural Power, Inc.  
Brian Gordon  
Francestown Turnpike  
New Boston NH 03070

Naval Civil Engineering Lab  
Kwang Ta Huang  
CODE L 72  
Port Huenceme CA 93043

Nebraska Department of Economic Development  
Rex Martin  
University of Nebraska-Lincoln  
W191 Nebraska Hall  
Lincoln NE 68588-0535

Pat Montoya  
State Issues Director  
625 Silver Ave., SW  
Suite 130  
Albuquerque, NM 87102

Howard Nelson  
1024 Linda Lane  
Charlotte NC 28211

NEOS Corporation  
Kirk Stores  
165 South Union Blvd  
Suite 122  
Lakewood CO 80228

New England Power Service  
Ed Gulachenski  
25 Research Drive  
Westborough MA 01581

New Mexico League of Women Voters  
Barbara M. Rosnagle  
Natural Resources Chair  
116 Salamanca NW  
Albuquerque NM 87107

New Mexico State University  
Cooperative Extension Service  
Skip Finley  
PO Box 390  
Mora NM 87732

New Mexico State University  
Cooperative Extension Service  
Bob Grassberger  
9301 Indian School Rd NE, Suite 201  
Albuquerque NM 87112

New Mexico State University  
Cooperative Extension Service  
Robert O. Coppedge, Ph.D.  
Box 3AE  
Las Cruces NM 88003

New Mexico State University  
Pat Melendrez  
San Miguel County Extension Agent  
PO Box 2170, West Branch  
Las Vegas NM 87701

New Mexico State University  
Southwest Technology Development Institute  
Steve Durand  
Box 30001/Dept. 3SOL  
Las Cruces NM 88003-0001

New Mexico State University  
Southwest Technology Development Institute  
Andrew L. Rosenthal  
Box 30001/Dept. 3SOL  
Las Cruces NM 88003-0001

New Mexico State University  
Southwest Technology Development Institute  
Dr. Rudi Schoenmackers  
Box 30001/Dept. 3SOL  
Las Cruces NM 88003-0001

New York State Energy Research and Dev. Authority  
Fred Strnisa  
2 Rockefeller Plaza  
Albany NY 12223

New York State Pub. Serv. Comm.  
Edward Schrom  
Empire State Plaza  
Albany NY 12223

Nippon Electric Glass Co., Ltd.  
Bernard L. Steierman  
11801 Rockville Pike Suite 1704  
Rockville MD 20852

North Carolina Alternative Energy Corp.  
Bob Weiss  
PO Box 12699  
Research Triangle Park NC 27709

Northern Research & Eng. Corp.  
Dr. James B. Kesseli  
39 Olympia Avenue  
Woburn MA 01801-2073

Northwest Power Planning Council  
Tom Truelove  
851 SW Sixth Ave., Suite 1100  
Portland OR 97204

NREL  
Meir Carasso, Ph.D., P.E.  
Manager, Thermal Science Research Section  
1617 Cole Boulevard  
Golden CO 80401

NREL  
James G. Jones  
1617 Cole Blvd  
Golden CO 80401-3393

NREL  
Steve Rubin  
1617 Cole Blvd  
Golden CO 80401

NREL  
Chuck Kutscher, P.E.  
Senior Engineer  
1617 Cole Boulevard  
Golden CO 80401

NREL  
G. David Mooney, Ph.D.  
Project Coordinator  
1617 Cole Boulevard  
Golden, CO 80401-3393

NREL  
Federica Zangrando, Ph.D.  
Senior Engineer  
1617 Cole Boulevard  
Golden CO 80401

NREL  
Roger W. Taylor  
Project Manager  
1617 Cole Boulevard  
Golden CO 80401-3393

Oklahoma Gas and Electric  
J. D. Hampton  
PO Box 321  
Oklahoma City OK 73101

On Ice  
Harry Franey  
3116 Pleasant Grove Rd.  
Pleasant Grove CA 95668

Pacific Gas and Electric Co.  
Steve Hester  
Brian Farmer  
3400 Crow Canyon Road  
San Ramon CA 94583

Pacific Gas and Electric Company  
Joseph J. Iannucci  
Program Manager  
3400 Crow Canyon Road  
San Ramon CA 94583

Pacific Power and Light  
Steve Carr  
920 SW 6th Avenue  
Portland OR 97204

Packerland Solar System  
Richard Lane  
PO Box 8262  
Green Bay WI 54308

PAL Engineering Services, Inc.  
Ken Lambert, VP  
U.S. Office: 621 Heather Knoll  
Desoto TX 75115

Parsons of California  
D. R. Biddle  
PO Box 6189  
Stockton CA 95206

Gary Peacock  
142 Sandy Oak Trail  
Charlotte NC 28210

Ralph R. Pence Associates  
725 S. Broadway  
Denver CO 80209

Pennsylvania Energy Office  
Director  
116 Pine Street  
Harrisburg PA 17101-1227

Pennsylvania Power & Light Co.  
R. J. Fernandez  
North Ninth Street  
Allentown PA 18101

Philadelphia Electric Company  
Don Fagnan  
2301 Market Street 510-1  
Philadelphia PA 19101

Photon Energy, Inc  
John A. Johansen  
9650-A Railroad Dr.  
El Paso TX 79924

Photovoltaic Energy Systems  
Paul Maycock  
P. O. Box 290  
Casanova VA 22017

Plains Electric Generation and Transmission  
Cooperative, Inc.  
Daniel S. Bailet  
PO Box 6551  
Albuquerque NM 87197

Plains Electric Generation and Transmission  
Cooperative, Inc.  
Dwight Lamberson  
Supervisor of Forecasting & Modeling  
PO Box 6551  
Albuquerque NM 87197

Platte River Power Authority  
Carol Dollard  
Timberline and Horsetooth Roads  
Fort Collins CO 80525

Plumas - Sierra Rural Electric Cooperative  
Paul S. Bony  
Manager of Member Services  
PO Box 2000  
Portola, CA 96122-2000

Portland State University  
Jean P. Murray, Ph.D.  
PO Box 751  
Portland OR 97207-0751

Power Kinetics, Inc.  
W. E. Rogers  
415 River Street  
Troy NY 12180-2822

Andrew G. Proulx  
10 Kelly Road  
Westford MA 01886



Public Service Commission  
Allen Girdner  
Utility Economist  
224 E. Palace St.  
Santa Fe NM 87503

Public Service Co. of New Mexico  
M. Phyllis Bourque  
Alvarado Square  
Albuquerque NM 87158-2822

Public Service Co. of New Mexico  
Vic Silva  
CR Dept (0076)  
Alvarado Square  
Albuquerque NM 87158

Public Service Co. of New Mexico  
Becky Kilbourne  
Retail Electric Marketing Center  
Alvarado Square  
Albuquerque NM 87158

Public Service Co. of New Mexico  
Mark E. Harlan  
Technical Analysis Coordinator  
Alvarado Square  
Albuquerque NM 87158

Public Service Co. of New Mexico  
Tom Nesmith, P.E.  
Alvarado Square - MS 0256  
Albuquerque NM 87158

Public Service Co. of New Mexico  
John M. Noble, P.E.  
Alvarado Square - MS 0510  
Albuquerque NM 87158

Public Service Electric & Gas  
Harry Roman  
B. Radimer  
PO Box 570  
Newark NJ 07101

Purdue University  
Oleg Wasynczuk  
School of Elec. Engr.  
West Lafayette IN 47907

Radco Products, Inc.  
George O. Radford  
President  
2877 Industrial Parkway  
Santa Maria CA 93455

Real Gas and Electric Co.  
PO Box F  
Santa Rosa CA 95402

Renewable Energy Training Institute  
Jeffrey S. Ross  
Assistant Director  
122 C Street, NW  
Suite 520  
Washington DC 20001

Rensselaer Polytechnic Inst.  
Jose M. Borrego  
EESE Dept. JEC 7020  
Troy NY 12181

Research Triangle Institute  
Carl Parker  
PO Box 12194  
Research Triangle Park NC 27709

Alan Richardson  
Business Liaison  
New Postal Building  
Room 3004  
Santa Fe NM 87501

Rite Engineering & Mfg. Corp.  
9441 Washburn Rd.  
Downey CA 90242

Roan Corporation  
James L. Abolt  
177 Bovey Road, Suite 520  
San Mateo CA 94402

Rockwell International Corporation  
Energy Technology Engineering Center  
Robert K. Hoside, C.E.M.  
PO Box 1449  
Canoga Park CA 91304

The Rovac Corp.  
Raymond E. Shea, Sr.  
President  
PO Box 111  
1030 Stafford St.  
Rockdale MA 01542

SAIC  
Barry L. Butler, SEIA Chairman  
Room 2043, M/S C2J  
10260 Campus Point Drive  
San Diego CA 92121

Sandia National Laboratories  
Mark S. Allen  
Technology Transfer Division  
PO Box 5800  
Albuquerque NM 87185-5800

Sandia National Laboratories  
R. Hamil  
D. Belasich  
C. Lombawa  
Org. 4212  
PO Box 5800  
Albuquerque NM 87185

Sandia National Laboratories  
Julie Clausen, 7161  
PO Box 5800  
Albuquerque NM 87185

Sandia National Laboratories  
Rolf Wrons, 7816  
PO Box 5800  
Albuquerque NM 87185

San Diego Gas & Electric Co.  
Skip Fralick  
PO Box 1831  
San Diego CA 92112

San Jose State University  
Helmer Nielsen  
Dept. of Mech. Engr.  
Washington Square  
San Jose CA 95192

Scholfield Solar  
Allen Carrozza  
2450 Channel Drive, Suite A  
Ventura CA 93003

Science Applications International Corp.  
Roger L. Davenport  
Division 448  
15000 West 6th Ave., Suite 202  
Golden CO 80401

Science Applications International Corp.  
Kelly Beninga  
Division 448  
15000 West 6th Ave., Suite 202  
Golden CO 80401

Science and Technology Corporation  
Ronald J. Nelson  
12452 Towncr NE  
Albuquerque NM 87112

Segal's Solar Systems  
Barry Jay Segal  
Consulting Engineer  
3357 Cranberry South  
Laurel, MN 20724-2419

Scientific Analysis, Inc.  
John Allen Gunn, PE  
6012 E. Shirley Lane  
Montgomery AL 36117

Mr. Ernest Schiele  
2323 Bellwood Drive #49  
Grand Island NE 68801

Mr. Ed Schrieber  
3225 S. 14th St.  
Lincoln NE 68502

Seed International, Inc.  
Harold W. Nelson  
General Manager  
Vice President of Marketing  
221 Rio Rancho Blvd  
Rio Rancho, NM 87124

SLEMCO  
A. J. Slemmons  
19655 Redberry Dr.  
Los Gatos CA 95030

Sea Sun Power Systems  
George Hagerman  
124 East Rosemont Ave.  
Alexandria VA 22301-2326

Segal's Solar Systems  
Barry Jay Segal  
3357 Cranberry South  
Laurel MD 20724-2419

Seldom Seen Education  
Mary C. Stuever  
PO Box 474  
Placitas NM 87043

Sevier County High School  
Jeremy Smith, Student  
308 Caton Rd.  
Sevierville TN 37862

Siemens Solar Industries  
Bill Howley  
PO Box 6032  
Camarillo CA 93011

Sierra Club Rio Grande Chapter  
Ken Hughes  
Energy Chair  
1204 Placita Loma  
Santa Fe NM 87501

Sierra Pacific Power Co.  
R. G. Richards  
PO Box 10100  
Reno NV 89520

Skyline Engineering  
Dr. Robert Wills, P.E.  
Route 45, PO Box 134  
Temple NH 03084-0134

SMUD  
Don Osborne  
Box 15830  
Sacramento CA 95852-1830

SMUD  
David W. Rienhart  
Box 15830  
Sacramento CA 95852-1830

Solar Development, Inc.  
David Burrows  
3630 Reese Avenue  
Garden Industrial Park  
Riviera Beach FL 33404

Solar Energy Corporation  
Robert Aresty  
Box 3065  
Princeton NJ 08540

Solar Energy Industries Association  
Ann Polansky  
777 North Capital Street, NE  
Suite 805  
Washington DC 20002-4226

Solar Energy Industries Assn  
Ken Shemkopf  
Linda Ladas  
Scott Sklar  
Suite 805  
777 N. Capitol St. NE  
Washington DC 20002-4226

Solar Kinetics, Inc.  
Paul Schertz, Vice President  
10635 King William Drive  
Dallas TX 75220

Solar Kinetics, Inc.  
Gus Hutchison  
10635 King William Drive  
Dallas TX 75220

Solar Power Engineering Co. Inc.  
T. Buna  
PO Box 91  
Morrison CO 80468

Solar Reactor Technologies  
Robin Parker  
P. O. Box 330975  
Miami FL 33233

Solar Steam  
D. E. Wood  
PO Box 32  
Fox Island WA 98333

Solar Stirling Industries  
Jack Stearns  
2822 Highridge Rd.  
La Crescenta CA 91214

Solar Systems Economics  
Michael Lotker, Consultant  
1646 Folkstone Terrace  
Westlake Village CA 91361

Solar Uno  
EPS  
#A-355  
PO Box 02-5256  
Miami FL 33102-5256

Solid Waste Bureau  
Barbara Hoditschek  
Program Manager  
Environment Department  
1190 St. Francis Drive  
Santa Fe NM 87503

Southern California Edison Co.  
C. Lopez  
PO Box 800  
Rosemead CA 91770

Southwest Public Affairs, Inc.  
Fred L. O'Cheskey  
President  
300 First Interstate Plaza  
150 Washington Avenue  
PO Box 2187  
Santa Fe, NM 87504

Southwest Technology Development Institute  
Robert Smith  
M.E. Property Control Division  
General Services Department  
Simms Building  
715 Alta Vista  
Santa Fe NM 87503

Specialized Environmental  
Products, Inc.  
Arthur J. Brooks  
3325 Ali Baba, Suite 609  
Las Vegas NV 89118

Stearns-Catalytic Corp.  
T. E. Olson  
Box 5888  
Denver CO 80217

State of California  
California Energy Commission  
Energy Technology Development Division  
Research and Development Office  
Promod Kulkarni  
Phil Mischner  
1516 9th Street  
MS-43  
Sacramento CA 95814-5512

State of California  
Department of Corrections  
Delano State Prison  
Tom Shanyfelt  
PO Box 567  
Delano CA 93216-0567

State of California  
Department of Corrections  
Harry Francy  
3116 Pleasant Grove Rd.  
Pleasant Grove CA 95668

State of Colorado  
Office of Energy Conservation  
Howard "Andy" Walker Ph.D., M.E.  
Renewable Energies Coordinator  
1675 Broadway  
Suite 1300  
Denver CO 80202-4613

State of Florida  
Colleen McCann Kettles  
David Block  
Jim Huggins  
Florida Solar Energy Center  
300 State Road 401  
Cape Canaveral FL 32920-4099

State of Florida  
Daryl O'Connor  
Executive Office of the Governor  
The Capitol  
Tallahassee FL 32399-0001

State of Florida  
John B. Stark  
Executive Office of the Governor  
The Capitol  
Tallahassee FL 32399-0001

State of Hawaii  
Thomas J. O'Brien  
Department of Business and Economic Development  
335 Merchant St., Room 110  
Honolulu HI 96813

State of Hawaii  
Maurice H. Kaya, P.E.  
Department of Business, Economic Development, &  
Tourism  
335 Merchant St., Room 108  
Honolulu HI 96813

State of Hawaii  
David A. Rezachek, Ph.D., P.E.  
Department of Business and Economic Development  
335 Merchant St., Room 110  
Honolulu HI 96813

State of New Mexico  
Energy, Minerals and Natural Resources Department  
James Comon  
Anita Lockwood  
Harold Trujillo  
Brian K. Johnson, P.E.  
2040 South Pacheco Street  
Santa Fe NM 87505

State of New Mexico  
New Mexico State Land Office  
Geoff Webb  
PO Box 1148  
Santa Fe NM 87504-1148

State of New Mexico  
Office of Interstate Natural Gas Markets  
Ronald H. Merrett, Director  
P.O. Box 2088  
Room 206, Land Office Bldg.  
Santa Fe, NM 87504

State of Wyoming  
Department of Commerce  
John F. Nunley III  
Federal Grants Supervisor  
Barrett Building  
Cheyenne WY 82002

State University of New York  
Atmospheric Sciences Research Center  
R. Percy  
Albany NY 12222

Stirling Technology Company  
Mr. Maurice A. White  
2952 George Washington Way  
Richland WA 99352

Stone & Webster Engr.  
Dave Agenta  
245 Summer Street  
Boston MA 01921

Ken Stone  
6882 Via Angelina  
Huntington Beach CA 92649

Strategies Unlimited  
R. Winegarner  
201 San Antonio Circle  
Suite 205  
Mountain View CA 94040

Sundstrand Advanced Technology Grp.  
William J. Greenlee, Engineering Manager  
PO Box 7002  
Rockford IL 61125-7002

Sun Exploration and Production Co.  
R. I. Benner  
PO Box 2880  
Dallas TX 75221-2880

Sundstrand ATG  
D. Chaudoir  
William J. Greenlee  
PO Box 7002  
Rockford IL 61125

Sunquest Fresource  
Greg Baer, PE  
PO Box 3763  
Hickory NC 28603

Suntec Systems, Inc.  
J. H. Davison  
Suite B-4  
Loring Park Office Bldg.  
430 Oak Grove St.  
Minneapolis MN 55403

Sustainable Energy Systems  
David N. Borton, Ph.D., President  
Hilltop Road  
Troy NY 12180

Swedlow, Inc.  
E. Nixon  
12122 Western Avenue  
Garden Grove CA 92645

Sylvester/Bernex  
Richard P. Vento  
24700 Highpoint Rd.  
Beachwood OH 44122

Technology Enterprise Division  
Karen Martin  
P.O. 549  
Mesilla NM 88046

Tech Reps, Inc.  
John Stikar  
5000 Marble NE, Suite 222  
Albuquerque NM 87110

Tennessee Valley Authority  
Sharon Ogle  
Solar Applications Branch  
B 513 Signal Place  
Chattanooga TN 37401

Mac Thayer  
6 Byard St.  
Athens OH 45701

The Solar Letter  
Allan L. Frank  
9124 Bradford Rd.  
Silver Spring MD 20901-4918

TESCO  
Linda Terrel  
PO Box 970  
Fort Worth TX 76101-0970

Tetra Corporation  
Kenell J. Touryan, Ph.D.  
Director of Energy Resources  
3701 Hawkins St. NE  
Albuquerque NM 87109-4345

Texas Tech University  
Dept. of Electrical Engineering  
E. A. O'Hair  
PO Box 4439  
Lubbock TX 79409

Thermacore, Inc.  
Mr. Donald Ernst  
780 Eden Road  
Lancaster PA 17601

The Gas Company  
Shivu Desai  
Market Development  
Project Engineer  
Marketing  
555 W. Fifth Street  
Los Angeles, CA 90013-1011

Tierra de Sol Engineering  
Darryl P. Ruchle  
E.E., President  
4600-C Montgomery NE  
Albuquerque NM 87109

Trends Publishing Inc.  
Evelyn Didier  
1079 National Press Building  
Washington DC 20045

Tritech Incorporated  
Timothy Benedict  
PO Box 1429  
Tahlequah OK 74465

United States Environmental Protection Agency  
Patricia C. Plympton  
Special Assistant, Policy and Resources Development  
Office of Administration  
Safety, Health, and Environmental Management  
Division  
401 M Street SW (PM-273)  
Washington, DC 20460

United States Environmental Protection Agency  
Phil Wirdzck  
Chief, Building Alteration Section  
Facilities Operations Branch  
Facilities Management and Services Division

University of Central Florida  
Dr. Gerard G. Ventre  
Research Scientist  
Institute for Simulation and Training  
12424 Research Parkway  
Suite 300  
Orlando FL 32826

University of Colorado, Boulder  
Dr. Jan F. Kreider, P.E.  
Dept. of Civil Environmental and Architectural  
Engineering  
Boulder CO 80309

U.S. Air Force  
Clifford E. Richardson, III  
Professional Engineer  
Construction Management  
1606th Air Base Wing (DEEC)  
Kirtland AFB NM 87117

U.S. Air Force  
Robert R. Cooper  
Electrical Engineer  
6 CES/CEEE  
7621 Hillsborough Loop Dr.  
MacDill AFB, FL 33621-5207

U.S. Army Corps of Engineers  
Larry D. Lister  
Mechanical Engineer  
PO Box 4005  
Champaign IL 61820-1305

U.S. Army Corps of Engineers  
Robert S. Gorham Jr., A.I.A.  
Chief, Technology Transfer  
PO Box 9005  
Champaign IL 61826-9005

U.S. Army Engineering and Housing Support Center  
Robert G. O'Brien, P.E.  
Chief Utilities Engineering Division  
CEHSC-FU  
Fort Belvoir VA 22060-5580

USAF/ETAC  
Hilda Snelling  
ENGRC Meteorology Section  
Scott AFB IL 62225

US/ECRE  
Guy Betten  
Executive Director  
Renewable Energy Training Institute  
PO Box 10095  
Arlington VA 22210-9998

3M-Solar Optics Program  
Paul Jaster  
Heather Kutzler  
3M Center  
Bldg. 225-2n-06  
St. Paul MN 55144-1000

Tri State Technology Service  
Sani Aversano  
27 Governors Hill Rd.  
Oxford CT 06483

TRW Space & Technology Group  
G. M. Reppucci  
One Space Park  
Redondo Beach CA 90278

TUV Rheinland of N.A., Inc.  
Paul Schultze  
Vice President  
3420 Executive Center Drive  
Suite 165  
Austin TX 78731

U.S. Army Corps of Engineers  
Robert S. Gorman Jr., A.I.A.  
Architect  
Chief, Technology Transfer  
P.O. Box 9005  
Champaign, IL 61826-9005

U. S. Dept of Commerce  
Mr. Les Garden  
ITA/OGIM, Rm 2805  
Washington DC 20230

U.S. Department of Energy  
G. Burch  
C. Carvile  
N. Haque  
Forrestal Building  
Code CE-132  
1000 Independence Avenue SW  
Washington DC 20585

U.S. Department of Energy  
Frank (Tex) Wilkins  
1000 Independence Ave., SW  
Washington DC 20585

University of Arizona  
George V. Mignon  
Environmental Research Lab.  
Tucson AZ 85706-6985

University of California  
Kurt Lund  
SECR 0310  
La Jolla CA 92093-0310

University of California, Berkeley  
C. Hu  
Dept. of Elec. Engr.  
Berkeley CA 94720

University of Colorado  
Dr. Jan F. Kreider, P.E.  
Dept. of Civil Engr.  
Boulder CO 80309

University of Delaware  
Allen Barnett  
Dept. of EE  
Newark DE 19711

University of Hawaii  
Patrick Takahashi  
Hawaii Natural Energy Inst.  
2540 Dole Street  
Honolulu HI 96822

University of Houston Energy Laboratory; SPA  
Lorin Vant-Hull  
Houston TX 77004

University of Lowell  
Thomas Costello  
Fahd Wakim  
1 University Avenue  
Lowell MA 01854

University of Minnesota  
E. A. Fletcher  
Dept. of Mechanical Engineering  
1111 Church St. SE  
Minneapolis MN 55455

University of New Mexico  
M. W. Wildin  
Department of Mechanical Engr.  
Albuquerque NM 87131

University of New Mexico  
NMERI  
G. Leigh  
Albuquerque NM 87131

University of Texas at Arlington  
Jack Fitzer  
West 6th at Speer Street  
Arlington TX 76019

University of Wisconsin  
T. A. Lipo  
Dept. of Elec. Engr. and Computer Science  
Madison WI 52706

Utility Power Group  
M. Stern  
9410 DeSoto Ave., Unit G  
Chatsworth CA 91311

Ventures Plus, Inc.  
Frank A. Simko  
4123 N. Tamiami Trail  
Sarasota FL 34234

Dan Vermont  
30101 Wolf Rd.  
Bay Village OH 44070

Viking Solar Systems, Inc.  
George Goranson  
1850 Earlmont Ave.  
La Canada CA 91011

Virginia Polytechnic Institute and State University  
Saifur Rahman, Ph.D.  
Associate Professor  
Electrical Engineering Department  
Blacksburg VA 24061

Virginia Power Co.  
Tim Bernadowski  
Corp. Tech. Assess.  
5000 Dominion Boulevard  
Glen Allen VA 23060

Ross R. Wagner  
744 E. Samaria  
Eric MI 48133

Wall Street Journal  
Environmental Reporter  
10 Post Office Square  
Suite 715  
Boston MA 02109

Westinghouse Science & Tech. Ctr.  
Walter J. Dollard  
Technology Director, Energy & Utility Systems Group  
1310 Buclah Rd.  
Pittsburgh PA 15235

Wichita State University  
Center for Energy Studies  
Dr. Ward Jewell  
Box 44  
Wichita KS 67208

Wisconsin Power & Light  
Bob Terrell  
222 West Washington Ave.  
Madison WI 53701-0192

WG Associates  
Vern Goldberg  
6607 Stonebrook Circle  
Dallas TX 75240

Mr. Jay Whimply  
2456 North Plain City  
Farr West UT 84404

Brent Wilson, PE  
Associate Director Engineering and Architecture  
1606 ABW/DEEE  
Kirtland AFB NM 87117-5496

Wyle Laboratories  
Don McAvin  
7800 Governors Drive West  
Huntsville AL 35807

Yankee Environmental Systems, Inc.  
Mark C. Beaubien  
Senior Engineer  
101 Industrial Road  
PO Box 746  
Turners Falls, MA 01376

Dale F. Zinn & Associates  
Dale F. Zinn  
Architect  
212 E. Marcy St.  
Santa Fe NM 87501

William E. Young  
380 Milford Point Drive  
Merritt Island FL 32952

Zomeworks  
1011 A Sawmill Rd NW  
Albuquerque NM 87104

Ricardo Xavier Zuniga  
State Co-Director  
119 East Marcy, Suite 101  
Santa Fe NM 87501

Dr. Graciela Lesino  
INENCO  
Buenos Aires 177  
4400 Salta ARGENTINA

Australian National University  
Department of Engineering Physics  
Prof. Stephen Kaneff  
PO Box 4  
Canberra ACT 2600  
AUSTRALIA



Ministry of Energy  
Ian Lewis  
56 Wellesley Street West  
Toronto, Ontario M7A 2B7  
CANADA

National Research Council of Canada  
G. Rumbold  
John Ayer  
Photovoltaic Division  
Montreal Road  
Ottawa, CANADA K1A 0R6

Queens University  
P. C. San  
Dept. of Elec. Engr.  
Kingston, Ontario  
CANADA K7L 3N6

Railenx Power & Energy Group (IPP)  
PO Box 2148  
Vancouver, B.C.  
CANADA V6B 3T8

Republic Equities Corporation  
Mr. L. P. Bradley  
PO Box 2874  
Vancouver, B.C.  
CANADA V6B3X4

University of British Columbia  
W. G. Dunford  
Dept. of Elec. Engr.  
Vancouver, BC  
CANADA V6T 1W5

University du Quebec  
Trois-Rivieres  
V. Rajagopalan  
Dept. d'Ingenierie - C.P. 500  
Trois-Rivieres, Quebec  
CANADA G9A 5H7

University of Toronto  
S. B. Dewan  
Dept of Elec. Engr.  
Toronto, Ontario  
CANADA M5S 1A4

Solar Uno  
Ellis Perez.  
Vice-Presidente de Mercadeo y Ventas  
Ave. Sarasota No. 54, Apto. 102  
Santo Domingo, DOMINICAN REPUBLIC

Adel Tawfik Soliman, Ph.D.  
New & Renewable Energy Authority  
Director of Solar Thermal Dept.  
PO Box 39 El-souk El-Togary  
Maadi 11693  
Cairo, EGYPT

Energy and Technology Associates  
Attn: Dr. Adel Solimon  
P.O.B. 39 El-Souk El-Togary  
Maadi 11693  
Cairo, EGYPT

DLR  
Institute for Technical Thermodynamics  
R. Buck  
Pfaffenwaldring 38-40  
7000 Stuttgart 80  
FEDERAL REPUBLIC OF GERMANY

Indo-American Credit Corporation Ltd.  
Dr. Amit N. Shsh  
Chairman & Manager  
Regd. Office: 101 House, Near Swati  
Apartment, Opp. Central Bank Lane,  
Ambawaki Bazar, Ambawadi, Ahmedabad  
(Guj.) INDIA-380 006

The Industrial Credit & Investment Corporation of  
India, LTD.  
Dr. P. H. Vaidya  
169, Backbay Reclamation  
Road No. 3  
Bombay 400 020  
INDIA

Luz Industries Israel  
Yoel Gilon  
PO Box 7929  
Jerusalem 91079  
ISRAEL

PCJ Engineering, Ltd.  
W.R. (Roddy) Ashby  
Manager  
Box 579  
Kingston 10, JAMAICA

Thermosol Equipments  
AH-158  
Anna Nagar  
Madras-600 040

**CONDUMEX**

Ing. Enrique Hill B.  
So juana ines de la Cruz  
34402o. Piso Tiainepantia. Edo. de Mexico  
C.P. 54000  
MEXICO

Diseno Solar y Arquitectura Bioclimatica  
Dr. Everardo Hernandez  
A-P 69-738  
MEXICO, D.F. C.P. 04460

Equipos y Sistemas de Captacion Solar  
Ing. Enrique Ramoneda Carrillo  
Bahia de Chachalacas 42 Col. V. Anzures  
11300 MEXICO, D.F.

Ing. Armando Nava Escobedo  
Jefe de Servicios de Conservacion  
Durango 291-80 PISO  
Colonia Roma  
06700 MEXICO, D.F.

Instalaciones Tecnicas Especializadas, S.A.  
Attn: Ing. Enrique Ramoneda Carrillo  
Gerente General  
Bahia De Chachalacas 42  
Mexico City, D.F. MEXICO 11300

Instituto de Investigaciones Electricas  
Dr. Jorge M. Huacuz Villamar  
Interior Internado Palmira  
Apartado Postal 475  
62000 Cuernavaca. Mor., MEXICO

Saudi Arabian National Center  
for Science and Technology  
Abbas A. Salim  
PO Box 15164, Riyadh 11444  
SAUDI ARABIA

Berna/Bernex AG  
R. S. Bonetti/M. Tobler  
Industriestrasse 36  
CH-4600  
Olten. SWITZERLAND

National Rural Electric Cooperative Association  
Pete Smith  
Manager  
5a. Avenida 16-28, Zona 10, 01010  
Guatemala. Guatemala, C.A.

## Internal Distribution

### MS

1380 M. Allen, 4212  
1380 R. Hamil, 4212  
1380 D. Belasich, 4212  
1380 C. Lombawa, 4212  
0724 D. L. Hartley, 6000  
0735 D. E. Arvizu, 6200  
0735 A. VanArsdall, 6200  
0704 P.C. Klimas, 6201  
0753 G. J. Jones, 6202  
0752 T. C. Bickel, 6213  
1127 C. P. Cameron, 6215  
1127 R. M. Edgar, 6215  
1127 R. A. Mahoney, 6215  
1127 M. E. Ralph, 6215  
1127 E. E. Rush, 6215  
1127 J. W. Strachan, 6215  
0703 C. E. Tyner, 6216  
0703 J. R. Anderson, 6216  
0703 C. W. Bennett, 6215  
0703 L. R. Evans, 6216  
0703 T. R. Mancini, 6216  
0703 D. F. Menicucci (20), 6216  
0753 D. E. Hasti, 6218  
0753 R. R. Hill, 6218  
0753 R. C. Pate, 6218  
0753 J. W. Stevens, 6218  
0899 Technical Library (5), 7141  
0619 Technical Publications, 7151  
0100 Document Processing  
for DOE/OSTI (10), 7613-2  
0933 R. Wrons, 7816  
9018 Central Technical Files, 8523-2  
0617 J. Clausen, 12630

### MS

0321 E. Barsis, 1400  
1111 S. Dosanjh, 1402  
0821 J. Ang, 1404  
1109 J. Jortner, 1408  
0318 G. Davidson, 1415  
1111 W. Camp, 1421  
1110 R. Allen, 1422  
1110 E. Brickell, 1423  
1109 A. Hale, 1424  
0441 J. Biffle, 1425  
0819 J. McGlaun, 1431  
0820 P. Yarrington, 1432  
0821 P. Stanton, 1433  
0439 D. Martinez, 1434  
0841 D. McCloskey, 1500  
0836 C. Peterson, 1501  
0827 P. Hommert, 1502  
0827 J. Rottler, 1511  
0834 A. Ratzel, 1512  
0835 R. Skocypec, 1513  
0832 W. Wolfe, 1551  
0833 C. Hailey, 1552  
0833 L. Whinery, 1552-1  
0826 W. Hermina, 1553  
0825 W. Rutledge, 1554  
0825 Z. Mahmud, 1554-1  
0443 H. Morgan, 1561  
0437 R. Thomas, 1562  
0557 Tom Baca, 2741

**DATE**

**FILMED**

**8/24/94**

**END**

