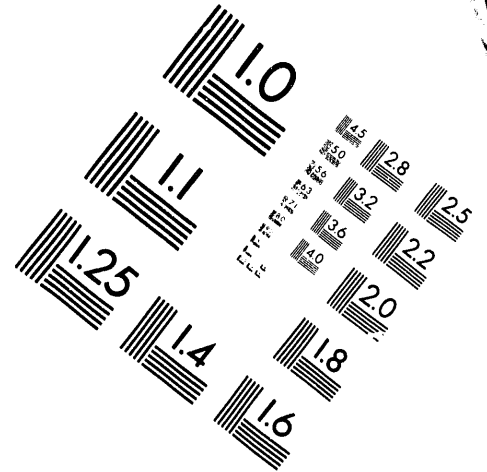
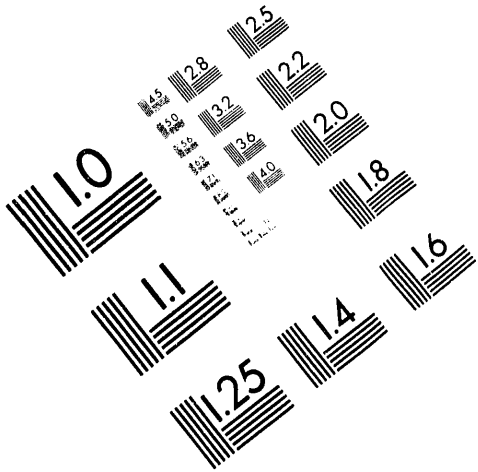




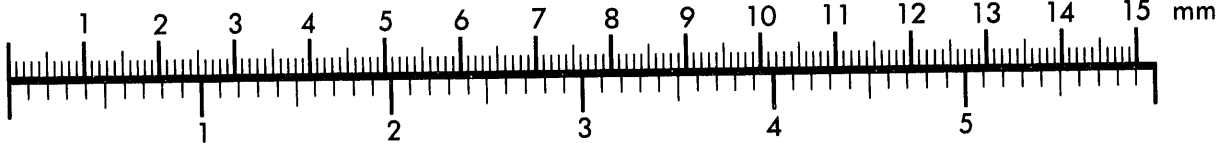
AIM

Association for Information and Image Management

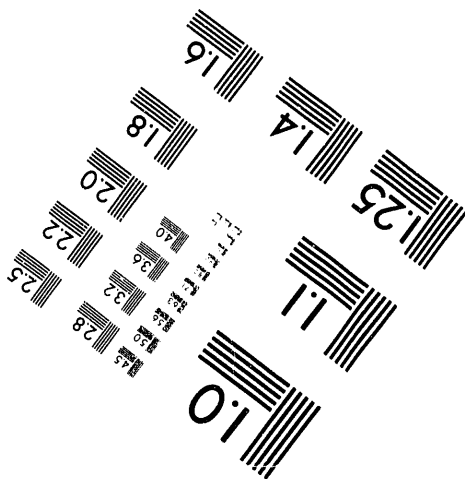
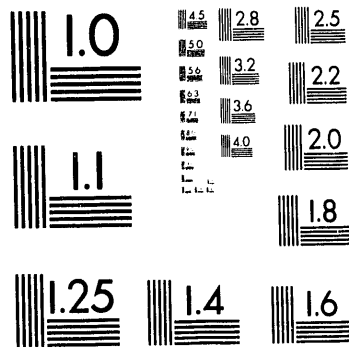
1100 Wayne Avenue, Suite 1100
Silver Spring, Maryland 20910
301/587-8202



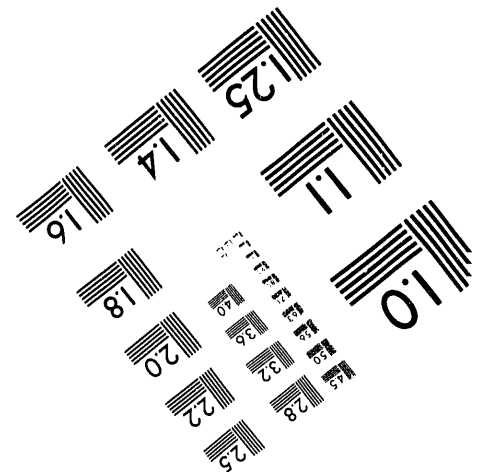
Centimeter



Inches



MANUFACTURED TO AIM STANDARDS
BY APPLIED IMAGE, INC.



1 of 1

LBL-32165 (Rev. 2)

Public Census Data on CD-ROM at Lawrence Berkeley Laboratory

by

Deane W. Merrill

Information and Computing Sciences Division
Lawrence Berkeley Laboratory
University of California
Berkeley, California 94720

October 1992

This work was supported by the Director, Office of Epidemiology and Health Surveillance, Office of Health, Office of Environment, Safety and Health, U.S. Department of Energy under Contract No. DE-AC03-76SF00098.

MASTER

REPRODUCTION OF THIS DOCUMENT IS UNLIMITED

INTRODUCTION

The Comprehensive Epidemiologic Data Resource (CEDR) and Populations at Risk to Environmental Pollution (PAREP) projects, of the Information and Computing Sciences Division (ICSD) at Lawrence Berkeley Laboratory (LBL), are using public socio-economic and geographic data files which are available to CEDR and PAREP collaborators via LBL's computing network. At this time 70 CD-ROM diskettes (approximately 36 gigabytes) are on line via the Unix file server `cedr.cd.lbl.gov`. Most of the files are from the U.S. Bureau of the Census, and most pertain to the 1990 Census of Population and Housing.

All the CD-ROM diskettes contain documentation in the form of ASCII text files. In addition, printed documentation for most files is available for inspection at University of California Data and Technical Assistance (UC DATA), tel. (510) 642-6571, or the UC Documents Library, tel. (510) 642-2569, both located on the UC Berkeley Campus. Many of the CD-ROM diskettes distributed by the Census Bureau contain software for PC compatible computers, for easily accessing the data.

Shared access to the data is maintained through a collaboration among the CEDR and PAREP projects at LBL, and UC DATA, and the UC Documents Library. LBL is grateful to UC DATA and the UC Documents Library for the use of their CD-ROM diskettes. Continued shared access in the future is not guaranteed if costs become prohibitive.

Via the Sun Network File System (NFS), these data can be exported to Internet computers for direct access by the user's application program(s). Due to the size of the files, this access method is preferred over File Transfer Protocol (FTP) access. Please contact Deane Merrill (`dwmerrill@lbl.gov`) if you wish to make use of the data.

SUMMARY OF DATA ON CD-ROM

The table below summarizes data on CD-ROM currently available on line (location = path name in `cedrcd.lbl.gov` ; disks = number of CD-ROM diskettes; MB = size in megabytes.) Most of the CD-ROM diskettes have their own directory structure, including separate files for documentation and different types of data.

Table I. Summary of data on CD-ROM				
description	format	location	disks	MB
1986 and 1987 County Business Patterns	dBase	/cdroms/disk4	1	337
1987 Census of Agriculture	dBase	/cdroms/disk9	1	605
1987 Economic Censuses: release 1D	dBase	/cdroms/disk5	1	431
1987 Economic Censuses: release 2B	dBase	/cdroms/disk23	1	347
1988 County and City Data Book	dBase	/cdroms/disk1	1	11
1988 Dress Rehearsal Census: TIGER	dBase	/cdroms/disk7	1	88
1988,89,90 Current Population Survey	dBase	/cdroms/disk8	1	560
1989,90,91 Current Population Survey	dBase	/cdroms/disk24	1	563
1990 Census: PL94-171 redistricting data	dBase	/cdroms/disk10- /cdroms/disk19	10	5,300
1990 TIGER files: precensus release	ASCII	/cdroms/disk2- /cdroms/disk3	2	1,106
1990 TIGER files: postcensus release	ASCII	/cdroms/disk25- /cdroms/disk68	44	24,000
1990 Census: Summary Tape File 1A (California)	dBase	/cdroms/disk22	1	656
1990 Census: Summary Tape File 3A (Los Angeles)	dBase	/cdroms/disk69	1	639
Digital Chart of the World	binary	/cdroms/disk85- /cdroms/disk88	4	1,587
total			70	36,000

1990 CENSUS PL94-171 REDISTRICTING DATA

The locations of 1990 Census PL94-171 redistricting data, by state, are as follows.
 (FIPS = Federal Information Processing System state code; location = path name in
 cedrcd.lbl.gov ; MB = size in megabytes; ncy = number of counties.)

Table II. 1990 Census PL94-171 redistricting data					
state	abbr	FIPS	location	MB	ncy
United States				5,000	3,141
Alabama	AL	01	/cdroms/disk13/pl9417al.*	119	67
Alaska	AK	02	/cdroms/disk12/pl9417ak.*	14	25
Arizona	AZ	04	/cdroms/disk10/pl9417az.*	75	15
Arkansas	AK	05	/cdroms/disk14/pl9417ar.*	98	75
California	CA	06	/cdroms/disk11/pl9417ca.*	357	58
Colorado	CO	08	/cdroms/disk12/pl9417co.*	88	63
Connecticut	CT	09	/cdroms/disk15/pl9417ct.*	38	8
Delaware	DE	10	/cdroms/disk13/pl9417de.*	11	3
District of Columbia	DC	11	/cdroms/disk15/pl9417dc.*	4	1
Florida	FL	12	/cdroms/disk16/pl9417fl.*	220	67
Georgia	GA	13	/cdroms/disk10/pl9417ga.*	142	159
Hawaii	HI	15	/cdroms/disk17/pl9417hi.*	11	5
Idaho	ID	16	/cdroms/disk12/pl9417id.*	41	44
Illinois	IL	17	/cdroms/disk13/pl9417il.*	246	102
Indiana	IN	18	/cdroms/disk14/pl9417in.*	147	92
Iowa	IA	19	/cdroms/disk18/pl9417ia.*	111	99
Kansas	KS	20	/cdroms/disk18/pl9417ks.*	118	105
Kentucky	KY	21	/cdroms/disk16/pl9417ky.*	84	120
Louisiana	LA	22	/cdroms/disk14/pl9417la.*	109	64
Maine	ME	23	/cdroms/disk12/pl9417me.*	36	16
Maryland	MD	24	/cdroms/disk15/pl9417md.*	59	24
Massachusetts	MA	25	/cdroms/disk16/pl9417ma.*	79	14
Michigan	MI	26	/cdroms/disk10/pl9417mi.*	181	83
Minnesota	MN	27	/cdroms/disk18/pl9417mn.*	130	87
Mississippi	MS	28	/cdroms/disk14/pl9417ms.*	79	82

Table II. 1990 Census PL94-171 redistricting data					
state	abbr	FIPS	location	MB	ncy
Missouri	MO	29	/cdroms/disk17/pl9417mo.*	152	115
Montana	MT	30	/cdroms/disk17/pl9417mt.*	40	57
Nebraska	NE	31	/cdroms/disk13/pl9417ne.*	81	93
Nevada	NV	32	/cdroms/disk17/pl9417nv.*	25	17
New Hampshire	NH	33	/cdroms/disk10/pl9417nh.*	23	10
New Jersey	NJ	34	/cdroms/disk19/pl9417nj.*	106	21
New Mexico	NM	35	/cdroms/disk16/pl9417nm.*	56	33
New York	NY	36	/cdroms/disk11/pl9417ny.*	231	62
North Carolina	NC	37	/cdroms/disk15/pl9417nc.*	158	100
North Dakota	ND	38	/cdroms/disk10/pl9417nd.*	62	53
Ohio	OH	39	/cdroms/disk15/pl9417oh.*	180	88
Oklahoma	OK	40	/cdroms/disk13/pl9417ok.*	116	77
Oregon	OR	41	/cdroms/disk13/pl9417or.*	69	36
Pennsylvania	PA	42	/cdroms/disk18/pl9417pa.*	241	67
Rhode Island	RI	44	/cdroms/disk15/pl9417ri.*	15	5
South Carolina	SC	45	/cdroms/disk12/pl9417sc.*	99	46
South Dakota	SD	46	/cdroms/disk14/pl9417sd.*	52	66
Tennessee	TN	47	/cdroms/disk16/pl9417tn.*	121	95
Texas	TX	48	/cdroms/disk17/pl9417tx.*	345	254
Utah	UT	49	/cdroms/disk16/pl9417ut.*	37	29
Vermont	VT	50	/cdroms/disk19/pl9417vt.*	16	14
Virginia	VA	51	/cdroms/disk19/pl9417va.*	106	136
Washington	WA	53	/cdroms/disk12/pl9417wa.*	96	39
West Virginia	WV	54	/cdroms/disk12/pl9417wv.*	56	55
Wisconsin	WI	55	/cdroms/disk10/pl9417wi.*	139	72
Wyoming	WY	56	/cdroms/disk14/pl9417wy.*	37	23

1990 TIGER FILES: PRECENSUS RELEASE

The precensus TIGER files have been replaced by postcensus files (see Table IV). At the present time, precensus TIGER files for California and Hawaii are temporarily on line in the locations indicated. (FIPS = Federal Information Processing System state code; location = path name in `cedr.cd.lbl.gov` ; MB = size in megabytes; ncy = number of counties.)

Geographic reference name files are located in `/cdroms/disk2/grf_n_06` and `/cdroms/disk3/grf_n_06` . File sizes listed under "MB" do not include geographic reference name files.

Table III. 1990 TIGER files: precensus release					
state / counties	abbr	FIPS	location	MB	ncy
California	CA	06	total	1,106	58
Alameda-Plumas			<code>/cdroms/disk2/06</code>	590	32
Riverside-Yuba			<code>/cdroms/disk3/06</code>	516	26

1990 TIGER FILES: POSTCENSUS RELEASE

The locations of postcensus TIGER files, by state, are as follows. (FIPS = Federal Information Processing System state code; call = call number in UC Berkeley Documents Library catalog; location = path name in `cedr.cd.lbl.gov` ; MB = size in megabytes; ncy = number of counties.) The full call number, where `<call>` = 1 through 44, is

H A 201 1990 T53 COMPU/D `<call>` DOCS

Geographic reference name files are located in `/cdroms/disk26/pubgrf90.s01` , etc. Files listed under "MB" do not include geographic reference name files.

Table IV. 1990 TIGER files: postcensus release						
state / counties	abbr	FIPS	call	location	MB	ncy
United States				total	24,000	3,141
Alabama	AL	01	2	<code>/cdroms/disk26/01</code>	552	67
Alaska	AK	02	1	<code>/cdroms/disk25/02</code>	109	25
Arizona	AZ	04	3	<code>/cdroms/disk27/04</code>	538	15
Arkansas	AR	05	4	<code>/cdroms/disk28/05</code>	524	75

Table IV. 1990 TIGER files: postcensus release

state / counties	abbr	FIPS	call	location	MB	ncy
California	CA	06		total	1,405	58
Alameda-Mono			5	/cdroms/disk29/06	613	26
Monterey-Siskiyou			6	/cdroms/disk30/06	624	21
Solano-Yuba			7	/cdroms/disk31/06	168	11
Colorado	CO	08	8	/cdroms/disk32/08	498	63
Connecticut	CT	09	9	/cdroms/disk33/09	129	8
Delaware	DE	10	9	/cdroms/disk33/10	39	3
District of Columbia	DC	11	10	/cdroms/disk34/11	7	1
Florida	FL	12		total	836	67
Alachua-Pasco			11	/cdroms/disk35/12	633	51
Pinellas-Washington			12	/cdroms/disk36/12	203	16
Georgia	GA	13	13	/cdroms/disk37/13	645	159
Hawaii	HI	15	1	/cdroms/disk25/15	68	5
Idaho	ID	16	12	/cdroms/disk36/16	377	44
Illinois	IL	17		total	732	102
Adams-Rock Island			14	/cdroms/disk38/17	579	81
St. Clair-Woodford			15	/cdroms/disk39/17	153	21
Indiana	IN	18	15	/cdroms/disk39/18	449	92
Iowa	IA	19	16	/cdroms/disk40/19	429	99
Kansas	KS	20	17	/cdroms/disk41/20	587	105
Kentucky	KY	21	18	/cdroms/disk42/21	456	120
Louisiana	LA	22	19	/cdroms/disk43/22	484	64
Maine	ME	23	20	/cdroms/disk44/23	187	16
Maryland	MD	24	21	/cdroms/disk45/24	211	24
Massachusetts	MA	25	20	/cdroms/disk44/25	248	14
Michigan	MI	26	22	/cdroms/disk46/26	600	83
Minnesota	MN	27	23	/cdroms/disk47/27	556	87
Mississippi	MS	28	24	/cdroms/disk48/28	465	82

Table IV. 1990 TIGER files: postcensus release

state / counties	abbr	FIPS	call	location	MB	ncy
Missouri	MO	29		total	683	115
Adair-Texas			25	/cdroms/disk49/29	639	107
Vernon-Wright			17	/cdroms/disk41/29	44	8
Montana	MT	30	26	/cdroms/disk50/30	593	57
Nebraska	NE	31	27	/cdroms/disk51/31	400	93
Nevada	NV	32	7	/cdroms/disk31/32	359	17
New Hampshire	NH	33	20	/cdroms/disk44/33	96	10
New Jersey	NJ	34	9	/cdroms/disk33/34	263	21
New Mexico	NM	35	28	/cdroms/disk52/35	531	33
New York	NY	36	29	/cdroms/disk53/36	644	62
North Carolina	NC	37		total	706	100
Alamance-Stokes			30	/cdroms/disk54/37	605	85
Surry-Yancey			31	/cdroms/disk55/37	101	15
North Dakota	ND	38	32	/cdroms/disk56/38	325	53
Ohio	OH	39	33	/cdroms/disk57/39	633	88
Oklahoma	OK	40	34	/cdroms/disk58/40	550	77
Oregon	OR	41	35	/cdroms/disk59/41	590	36
Pennsylvania	PA	42		total	778	67
Adams-Schuylkill			36	/cdroms/disk60/42	643	54
Snyder-York			9	/cdroms/disk33/42	135	13
Rhode Island	RI	44	9	/cdroms/disk33/44	43	5
South Carolina	SC	45	31	/cdroms/disk55/45	407	46
South Dakota	SD	46	37	/cdroms/disk61/46	369	66
Tennessee	TN	47	38	/cdroms/disk62/47	548	95
Texas	TX	48		total	1,929	254
Anderson-Fayette			39	/cdroms/disk63/48	614	75
Fisher-McCulloch			40	/cdroms/disk64/48	582	79
McLennan-Wheeler			41	/cdroms/disk65/48	642	88

Table IV. 1990 TIGER files: postcensus release

state / counties	abbr	FIPS	call	location	MB	ncy
Wichita-Zavala			34	/cdroms/disk58/48	91	12
Utah	UT	49	32	/cdroms/disk56/49	301	29
Vermont	VT	50	20	/cdroms/disk44/50	69	14
Virginia	VA	51	10	/cdroms/disk34/51	539	136
Washington	WA	53	42	/cdroms/disk66/53	549	39
West Virginia	WV	54	21	/cdroms/disk45/54	297	55
Wisconsin	WI	55	43	/cdroms/disk67/55	529	72
Wyoming	WY	56	44	/cdroms/disk68/56	403	23
outlying areas				total	235	111
American Samoa	AS	60	1	/cdroms/disk25/60	4	5
Federated States of Micronesia		64	1	/cdroms/disk25/64	7	4
Guam	GU	66	1	/cdroms/disk25/66	9	1
Marshall Islands		68	1	/cdroms/disk25/68	5	33
Northern Mariana Islands	CM	69	1	/cdroms/disk25/69	4	4
Palau		70	1	/cdroms/disk25/70	5	16
Puerto Rico	PR	72	1	/cdroms/disk25/72	193	78
U.S. Minor Outlying Islands (Midway Islands)		74	1	/cdroms/disk25/74	0.02	1
Virgin Islands of the United States	VI	78	1	/cdroms/disk25/78	8	3

1990 CENSUS: SUMMARY TAPE FILE 1A (STF1A)

The locations of 1990 Census Summary Tape File 1A files, by state, are as follows. (FIPS = Federal Information Processing System state code; location = path name in `cedrcd.lbl.gov` ; MB = size in megabytes; ncy = number of counties.)

Table V. 1990 Census: Summary Tape File 1A (STF1A)					
state	abbr	FIPS	location	MB	ncy
California	CA	06	/cdroms/disk22/*ca.*	656	58

1990 CENSUS: SUMMARY TAPE FILE 3A (STF3A)

The locations of 1990 Census Summary Tape File 3A files, by state and county, are as follows. (FIPS = Federal Information Processing System state code; location = path name in `cedrcd.lbl.gov` ; MB = size in megabytes; ncy = number of counties.)

The present STF3A data are from a prototype CD-ROM diskette produced in May 1992. The diskette contains known errors and will be replaced later.

Table VI. 1990 Census: Summary Tape File 3A (STF3A)					
state / counties	abbr	FIPS	location	MB	ncy
California	CA	06			
Los Angeles			/cdroms/disk69	639	1

DIGITAL CHART OF THE WORLD

The Digital Chart of the World was developed by the United States Defense Mapping Agency (DMA) with the cooperation of Australia, Canada, and the United Kingdom. Locations on CD-ROM are as follows: (location = path name in cedrcd.lbl.gov ; MB = size in megabytes.)

For further information, consult the ASCII text file stored in
/cdroms/disk85/credits/credits.doc

Table VII. Digital Chart of the World		
continents	location	MB
North America	/cdroms/disk85	388
Europe/Northern Asia	/cdroms/disk86	365
South America/Africa/Antarctica	/cdroms/disk87	406
Southern Asia/Australia	/cdroms/disk88	428
world	total	1,587

NFS SERVERS

Currently, documentation is exported from the following physical location:

```
LBL Information and Computing Sciences Division:
  parep2.lbl.gov          128.3.196.16      /home/parep2/data1
```

CD-ROM diskettes are exported from the following locations:

```
Lawrence Berkeley Laboratory:
  parep2.lbl.gov          128.3.196.16      /disk1 -/disk24    ( 24)
  parep.lbl.gov           128.3.254.131     /disk25-/disk48    ( 24)
  misty.lbl.gov           128.3.140.150     /disk49-/disk72    ( 24)
  parep.lbl.gov           128.3.254.131     /disk85-/disk90    ( 6)
  misty.lbl.gov           128.3.140.150     /disk91-/disk96    ( 6)
UC Data and Technical Assistance (UC DATA):
  csm29.berkeley.edu     128.32.165.47     /disk73-/disk84    ( 12)
  csm29.berkeley.edu     128.32.165.47     /disk97-/disk114   ( 18)
                                     total:              (114)
```

The 114 exported locations include the 70 diskettes listed in Table I, and 44 locations reserved for future use:

```
  parep2.lbl.gov          128.3.196.16      /disk6              ( 1)
  parep2.lbl.gov          128.3.196.16      /disk20-/disk21    ( 2)
  misty.lbl.gov           128.3.140.150     /disk70-/disk72    ( 3)
  csm29.berkeley.edu     128.32.165.47     /disk73-/disk84    ( 12)
  parep.lbl.gov           128.3.254.131     /disk89-/disk90    ( 2)
  misty.lbl.gov           128.3.140.150     /disk91-/disk96    ( 6)
  csm29.berkeley.edu     128.32.165.47     /disk97-/disk114   ( 18)
                                     total:              ( 44)
```

NFS CLIENTS

Currently, data on CD-ROM are exported to the following NFS clients. File locations as seen by the user are determined by the NFS client system administrator.

(M = mounted by NFS client)

(E = exported, not yet mounted)

(R = requested, not yet exported)

At this time, `cedrcd.lbl.gov` is synonymous with `parep2.lbl.gov`. That equivalence is subject to change in the future.

LBL Information and Computing Sciences Division:

<code>bigsur.lbl.gov</code>	128.3.140.31	(SPARC 2)	E
<code>daisy.lbl.gov</code>	128.3.140.148	(SPARC 1)	M
<code>misty.lbl.gov</code>	128.3.140.150	(SPARC 1+)	M
<code>prem.lbl.gov</code>	128.3.140.191	(SPARC 2)	E
<code>csr6.lbl.gov</code>	128.3.140.212	(PC)	M
<code>hibana.lbl.gov</code>	128.3.196.6	(SPARC 1+)	E
<code>ux5196.lbl.gov</code>	128.3.196.14	(SPARC 2)	E
<code>cedrcd.lbl.gov</code>	128.3.196.16	(SPARC 2)	M
<code>parep2.lbl.gov</code>	128.3.196.16	(SPARC 2)	M
<code>fauna.lbl.gov</code>	128.3.196.253	(SPARC 1+)	E
<code>cedr.lbl.gov</code>	128.3.253.214	(SPARC 2)	M
<code>csr8.lbl.gov</code>	128.3.254.92	(PC)	E
<code>parep.lbl.gov</code>	128.3.254.131	(SPARC 2)	M
<code>candy.lbl.gov</code>	128.3.254.142	(MAC)	E
LBL Energy and Environment Division, Indoor Environment Program:			
<code>carla.lbl.gov</code>	128.3.12.180	(HP 9000/730)	M
UC Data and Technical Assistance (UC DATA):			
<code>sdp2.berkeley.edu</code>	128.32.165.25	(Sun-3)	M
<code>csm29.berkeley.edu</code>	128.32.165.47	(SPARC 1+)	M
<code>sdp1.berkeley.edu</code>	128.32.165.24	(PC)	E
<code>CSM26.Berkeley.EDU</code>	128.32.165.42	(IBM 6000/520)	E
UC Library Systems Office:			
<code>wlsol.berkeley.edu</code>	128.32.59.82	(PC)	E
UC Berkeley Regional Planning and Center for Environmental Design:			
<code>redwood.ced.berkeley.edu</code>	128.32.151.61	(SPARC)	M
<code>sibley.ced.berkeley.edu</code>	128.32.151.66	(SPARC)	M
<code>iurd-j.ced.berkeley.edu</code>	128.32.151.233	(PC)	M
<code>dean1.ced.berkeley.edu</code>	128.32.181.203	(PC)	M
<code>sonoma.ced.berkeley.edu</code>	128.32.181.106	(SPARC)	E
UC Berkeley School of Public Health:			
<code>psi.berkeley.edu</code>	128.32.203.44	(SPARC)	M
UC Davis Computing Services:			
<code>lystra.ucdavis.edu</code>	128.120.132.103	(PC)	E

SYSTEM ADMINISTRATORS

The following system administrators should be contacted for technical information about specific NFS servers or NFS clients:

LBL Information and Computing Sciences Division:
Bob Rendler (510) 486-5629 rerendler@lbl.gov
LBL Energy and Environment Division, Indoor Environment Program:
Ken Revzan (510) 486-4034 klrevzan@lbl.gov
UC Data and Technical Assistance (UC DATA):
Norm Gelbart (510) 643-9132 nbg@alfa.berkeley.edu
UC Library Systems Office:
Paul Payne (510) 642-5168 paul@library.berkeley.edu
UC Berkeley Regional Planning and Center for Environmental Design:
James Ganong (510) 643-5048 jeg@ced.berkeley.edu
Bob Higbie (510) 643-5047 bobhig@ced.berkeley.edu
UC Berkeley School of Public Health:
Bob Sholtz (510) 642-5030 sholtz@psi.berkeley.edu
UC Davis Computing Services:
Russ Hobby (916) 752-0236 rdhobby@ucdavis.edu
Paul Schneeman (916) 752-5954 prscheeman@ucdavis.edu

ACKNOWLEDGMENTS

The author wishes to acknowledge assistance and support provided by Harvard Holmes, Fred Gey, Carl Quong, Bob Rendler, Norm Gelbart, Gary Peete, and Mari Miller.

This work was supported by the Director, Office of Epidemiology and Health Surveillance, Office of Health, Office of Environment, Safety and Health, U.S. Department of Energy under Contract No. DE-AC03-76SF00098.

FURTHER INFORMATION

For further information, contact:

Deane Merrill
Information and Computing Sciences Division
Building 50B, Room 2239
Lawrence Berkeley Laboratory
Berkeley CA 94720
tel: (510) 486-5063
fax: (510) 486-6363
internet: dwmerrill@lbl.gov
bitnet: merrill@lbl (merrill@lbl.bitnet)
compuserve: 71001,62 (71001.62@compuserve.com)

OBTAINING THIS DOCUMENT

This document is available via anonymous FTP from

Internet node:	cedr.cd.lbl.gov
directory:	/data1/merrill/docs/cedr
DOS WordPerfect 5.1:	cdrom2.wp5
PostScript:	cdrom2.ps
ASCII text:	cdrom2.asc

For example, to obtain [cdrom2.ps](ftp://data1/merrill/docs/cedr/cdrom2.ps) for printing on your computer, enter:

```
ftp cedr.cd.lbl.gov
anonymous          (user name)
dwmerrill@lbl.gov  (instead of password, your own ID in this format)
cd /data1/merrill/docs/cedr
dir                 (to see names and sizes of files)
binary             (required only for cdrom2.wp5 )
get cdrom2.ps
quit
```

The same document in Macintosh Microsoft Word 5.0 format is in LBL AppleTalk zone [icsd](#) , Public Folder [DWMerrill](#) , file [Census Data on CD-ROM \(Rev. 2\)](#) .

Future revisions will be stored in the same locations and will be announced in the LBL Computing Newsletter.

This version is [csr6.lbl.gov](ftp://csr6.lbl.gov): [c:\docs\cedr\cdrom2.25](ftp://c:\docs\cedr\cdrom2.25) 10/22/92 (1600)

**DATE
FILMED**

8 / 18 / 93

END

