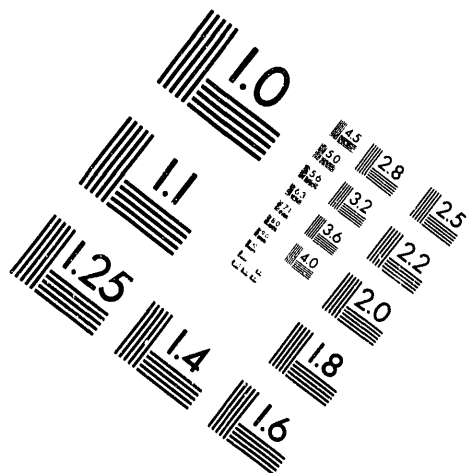
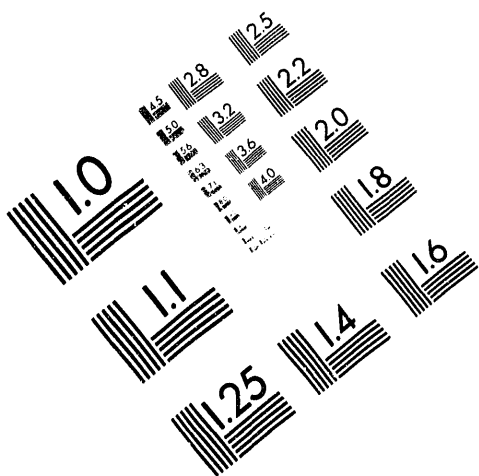




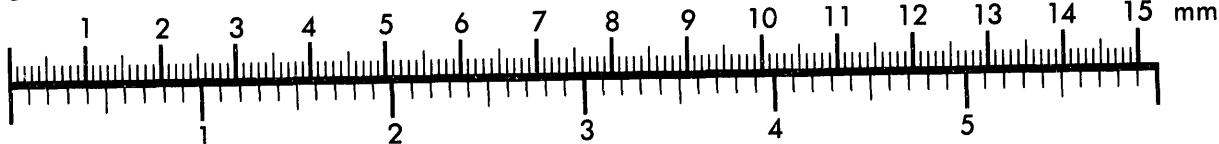
AIM

Association for Information and Image Management

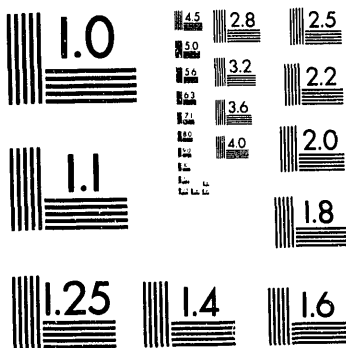
1100 Wayne Avenue, Suite 1100
Silver Spring, Maryland 20910
301/587-8202



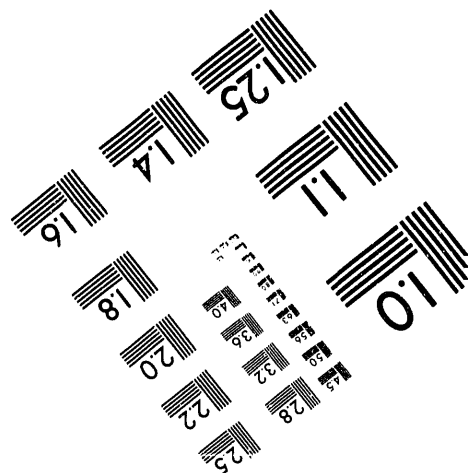
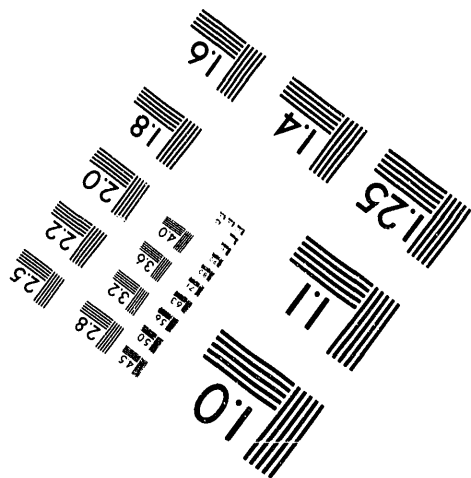
Centimeter



Inches



MANUFACTURED TO AIM STANDARDS
BY APPLIED IMAGE, INC.



1 of 1

DOE/CH/10324--T9

Southern State Radiological Emergency Preparedness and Reponse Plans: A Collection of Matrices

Southern States Energy Board
3091 Governors Lakes Drive
Suite 400
Norcross, Georgia 30071

July 1989

DISCLAIMER

This report was prepared as an account of work sponsored by an agency of the United States Government. Neither the United States Government nor any agency thereof, nor any of their employees, makes any warranty, express or implied, or assumes any legal liability or responsibility for the accuracy, completeness, or usefulness of any information, apparatus, product, or process disclosed, or represents that its use would not infringe privately owned rights. Reference herein to any specific commercial product, process, or service by trade name, trademark, manufacturer, or otherwise does not necessarily constitute or imply its endorsement, recommendation, or favoring by the United States Government or any agency thereof. The views and opinions of authors expressed herein do not necessarily state or reflect those of the United States Government or any agency thereof.

MASTER

DISTRIBUTION OF THIS DOCUMENT IS UNLIMITED g7b

Southern State Radiological Emergency Preparedness and Reponse Plans: A Collection of Matrices

Southern States Energy Board
3091 Governors Lakes Drive
Suite 400
Norcross, Georgia 30071

July 1989

Prepared under U.S. Department of Energy
Cooperative Agreement No. DE-FC02-87CH10324
1

Southern State Radiological Emergency Preparedness and Reponse Plans: A Collection of Matrices

Table of Contents

	Page
Introduction	1
Purpose	1
Conclusion	2
Matrices:	
Documentation	3
Assignment of Responsibility	5
Notification	9
Communications Equipment	11
Technical Response	12
Medical Support	15
Public Information	16
Training	18
Drills and Exercises	20
Assistance Agreements	22

Introduction

The Southern States Energy Board (SSEB) is an interstate compact organization that serves 16 states and the Commonwealth of Puerto Rico with information and analysis in energy and environmental matters. Technical support and services are offered in a variety of areas, including renewable and alternative energy technologies; energy conservation; acid rain; utility regulation; clean coal technologies and technology transfer; oil and natural gas supply; and solid, hazardous and radioactive materials management.

Nuclear waste management is a topic that has garnered considerable attention in the SSEB region in the last several years. Since 1985, SSEB has received support from the U.S. Department of Energy for the regional analysis of high-level radioactive waste transportation issues. In the performance of its work in this area, SSEB formed the Advisory Committee on High-Level Radioactive Materials Transportation, which comprises representatives from affected states and tribes. SSEB meets with the committee semi-annually to provide issue updates to members and to solicit their views on activities affecting their respective states.

Among the waste transportation issues considered by SSEB and the committee are shipment routing, the impacts of Monitored Retrievable Storage, state liability in the event of an accident and emergency preparedness and response. This document addresses the latter by identifying the major elements of southern state emergency preparedness and response programs.

Purpose

Section 180 (c) of the Nuclear Waste Policy Act Amendments (NWPAA) of 1987 requires the U.S. Department of Energy to provide technical assistance and funding to affected tribal, state and local governments for training for safe routine transportation and emergency response. Affected governments are jurisdictions with spent nuclear fuel or high-level radioactive waste transported through their borders.

As the department develops its plans for implementation of Section 180 (c), information on the current status of state emergency preparedness and response programs is needed. Therefore, under a cooperative agreement with DOE, SSEB compiled data, in matrix form, concerning its member states' emergency programs. Among the program components listed are plan documentation, agency responsibilities, equipment, training, technical response and medical support. Since Puerto Rico will not be affected by transportation under the NWPA and the amendments, information on the commonwealth's emergency preparedness and response program is excluded.

The information is not presented for evaluations of or comparisons between and among state programs and activities. Rather, the matrices are designed to provide DOE with a snapshot view of the programs for reference as it begins to develop its assistance strategy.

Each of SSEB's member states maintains a plan for radiological emergency response. Some are stand-alone documents, while others are set within a larger emergency operations plan. The states in which nuclear power plants operate maintain power plant-specific response plans and procedures. Additionally, several states in the region have developed or are in the process of developing plans for responding to radiological transportation emergencies.

Much of the information organized in the matrices was initially gleaned from these various state plans by SSEB staff. SSEB then distributed copies of the matrices to the states for review. The state representatives of the Advisory Committee and the radiological health director in each state were provided the opportunity to verify or correct the information. Verification of information was received from all states except Alabama.

Conclusion

As noted, the matrices provide, at a glance, fundamental information about radiological emergency response plans and processes in the southern states. While the focus of SSEB's current investigations in high-level radioactive waste are associated with transportation, much of the data collected for this report were developed within the context of nuclear power plant emergencies.

In all cases where transportation-specific plans are not in use, states have indicated that they will implement their general radiological incident response procedures in the event of an accident or release. There seems to be a trend in the southern region, however, toward the development of state plans specifically for response to radiological transportation incidents. As the shipment date for NWPA spent fuel and high-level radioactive waste approaches, transportation planning activities, including emergency response planning, will continue as a priority within the region.

DOCUMENTATION

	Emergency Response Plans and Subplans	Original Publication Date	Update Frequency	Do fixed facility plans also apply to transportation?	Contact
ALABAMA *	AL Radiological Emergency Response Plan for Nuclear Power Plants General Guidance for Radioactive Material Transportation Incidents	Annual certification	Specific plan for transportation incidents	Aubrey V. Godwin (205) 261-5315
ARKANSAS	AR Emergency Operations Plan Annex N - Radiological Incident Response Annex V - NPP Response	1981	As needed	No, but Annex N does	Greta J. Dicus (501) 661-2301
FLORIDA	FL Radiological Emergency Management Plan for NPP Radiological Emergencies other than NPP	September 1983 April 1979	Annually Annually	No, but would implement procedures established for radiological emergencies other than those at NPP	Lyle E. Jernatt (904) 487-1004 Bart Frost (904) 487-4915
GEORGIA	GA Radiological Emergency Plan Annex H - Transportation Accident Response	November 1987	Annex H currently under revision	Specific plan for transportation incidents	James C. Hardeman (404) 656-6905
KENTUCKY	Kentucky Emergency Operations Plan	1986	Annual review		Donald R. Hughes (502) 564-3700
LOUISIANA	LA Peacetime Radiological Response Plan	1978	Annual review - updates as needed	No - separate portion of plan addresses transportation	William H. Spell (504) 925-4518
MARYLAND	MD Disaster Assistance Plan Annex Q - Fixed Nuclear Facilities Radioactive Materials Accidents (Draft)	June 1981 1986	No, but have draft plan for transportation	Roland G. Fletcher (301) 631-3300
MISSISSIPPI	MS Radiological Emergency Plan Guidance for Radiological Transportation Emergencies	June 1980 February 1988	As needed	Specific plan for transportation incidents	Eddie S. Fuente (601) 359-6657 J.E. Maher (601) 960-9000
MISSOURI	State Emergency Operations Plan Part 3, Section B - MO Nuclear Emergency Assistance Plan	1978 1984 Last Update	As needed	No	William K. Johnson (314) 751-9770
N. CAROLINA	NC Comprehensive Emergency Management Plan Annex A, Appendix 32 - Radiological Protection NC Hazardous Materials Emergency Response Plan	September 1984, Appendix 2 - still under development 1981	As needed - latest October 1985 As needed - latest July 1983	Not directly	Dayne H. Brown (919) 733-4283

DOCUMENTATION (cont.)

	Emergency Response Plans and Subplans	Original Publication Date	Update Frequency	Do fixed facility plans also apply to transportation?	Contact
OKLAHOMA	State of Oklahoma Emergency Operations Plan	June 1983	Last revised (in total) August 1988		Oklahoma Civil Defense (405) 521-2481
S. CAROLINA	SC Operational Radiological Emergency Response Plan SC Technical Radiological Emergency Response Plan	May 1984	Annually As needed	No	Heyward G. Shealy (803) 734-4700
TENNESSEE	TN Emergency Management Plan TN Multijurisdictional Radiological Emergency Response Plan for Sequoyah N-plant	April 1986 1986	Annual review (Update every 3 years) Re-certified annually	Yes No	Eigan H. Usrey (615) 252-3356
TEXAS	Texas State Emer. Mgmt. Plan (the basic state plan) Annex L (Health Dept's. annex to the basic state plan) Appendix 7, Radiological Emer. Mgmt (Bureau of Radiation Control's portion of Annex L) Tab 4 (Bureau's hazard-specific tab for transportation accidents)	State plan - 1950's Annex L - 1982 Appendix 7 - 1982 Tab 4 - 1988	Annual review of all plans with update as needed	Both are subsets of Appendix 7, Radiological Emergency Management. Team organization and many response procedures are common to both.	Clarence L. Bom (512) 835-7000
VIRGINIA	VA Radiological Emergency Response Plan	June 1983	As needed - last update 01/87	Specific plan for transportation	Leslie P. Foldesi (804) 786-5832
W. VIRGINIA	WV Emergency/Disaster Plan Volume 1, Annex O	July 1979	As needed	No	Tom Burns (304) 348-5380

* Information not verified by state

ASSIGNMENT OF RESPONSIBILITY

	Overall Coordination	Exposure Control	Protective Action Determination	Public Information	Communications
ALABAMA *	Emergency Management Agency, Department of Public Health	Department of Public Health	Department of Public Health	Governor's Office	Emergency Management Agency
ARKANSAS	Department of Health - Division of Radiation Control, AR Office of Emergency Services	Department of Health - Division of Radiation Control	Department of Health - Division of Radiation Control	Department of Health, Office of Emergency Services	Department of Health, Emergency Communications Center
FLORIDA	Department of Community Affairs - Division of Emergency Management	Department of Health and Rehabilitative Services	DHRS, DEM	DEM	State Emergency Operations Center
GEORGIA	Department of Natural Resources	Department of Human Resources	DNR	DNR, GA Emergency Management Agency	GEMA
KENTUCKY	Division of Disaster and Emergency Services	State Radiological Officer	State Radiological Officer	DES	Emergency Communications Center
LOUISIANA	LA Nuclear Energy Division	LNED	LNED	Governor's Press Secretary/LNED, state police	LA Office of Emergency Preparedness, LNED
MARYLAND	Department of Public Safety & Correctional Services, MD Emergency Management and Civil Defense Agency	Department of the Environment - Center for Radiological Health (CRH)	Department of the Environment Secretary	DPPSCS - MEMCDA	DPPSCS - MEMCDA
MISSISSIPPI	MS Emergency Management Agency	Department of Health - Division of Radiological Health	Department of Health - Division of Radiological Health	MEMA, Division of Radiological Health	MEMA
MISSOURI	State Emergency Management Agency	Bureau of Radiological Health, MONet	Bureau of Radiological Health	SEMA	SEMA, Local Authorities
N. CAROLINA	Department of Crime Control and Public Safety, Department of Human Resources	Department of Human Resources - Radiation Protection Section	Department of Human Resources - Radiation Protection Section	DCC & PS Public Information Officer	DCC & PS Division of Emergency Management
OKLAHOMA	OK Civil Defense	State Department of Health, Radiation Protection Division	State Department of Health, Radiation Protection Division	OK Civil Defense	OK Department of Public Safety, OK Civil Defense
S. CAROLINA	SC Radiological Emergency Response Organization	Department of Health & Environmental Control - Bureau of Radiological Health	Department of Health and Environmental Control - Bureau of Radiological Health	Governor's Office	SC Emergency Preparedness Division Communications Office
TENNESSEE	TN Emergency Management Agency	Division of Radiological Health	Division of Radiological Health	Gov. Office	TEMA
TEXAS	Division of Emergency Management	Bureau of Radiation Control	Recommendations: BRC Selection and Implementation: Chief elected local official or On-scene Coordinator	Local government and the Division of Emergency Management	Department of Public Safety

ASSIGNMENT OF RESPONSIBILITY (cont.)

	Overall Coordination	Exposure Control	Protective Action Determination	Public Information	Communications
VIRGINIA	Department of Emergency Services	Department of Health	Department of Health	DES	DES
W. VIRGINIA	Office of Emergency Services	Department of Health - Industrial Hygiene Division	Department of Health, Industrial Hygiene Division	Governor's Press Office	Office of Emergency Services

ASSIGNMENT OF RESPONSIBILITY (cont.)

	Notification of State and Federal Agencies	Technical Response	Training	Drills and Exercises
ALABAMA *	Emergency Management Agency	Division of Radiological Health	Emergency Management Agency	Emergency Management Agency
ARKANSAS	Department of Health, Emergency Communications Center, Office of Emergency Services	Department of Health - Division of Radiation Control	Department of Health - Division of Radiation Control, Office of Emergency Services	Department of Health - Division of Radiation Control
FLORIDA	Division of Emergency Management	DEM	DEM, DHR, local emergency management agencies	DEM
GEORGIA	DNR	DNR, Department of Human Resources	DNR, DHR, GEMA	DNR, DHR, GEMA
KENTUCKY	Division of Disaster Emergency Services	State Radiological Officer	DES	DES
LOUISIANA	Office of Emergency Preparedness, Nuclear Energy Division	LNED	LOEP, LNED	LOEP, LNED
MARYLAND	Department of Public Safety and Correctional Services - MD Emergency Management & Civil Defense Agency	MD Department of the Environment - Center for Radiological Health	MEMCDA, County Civil Defense and Disaster Preparedness Agency, MD Department of the Environment	MEMCDA, CRH
MISSISSIPPI	MS Emergency Management Agency	Department of Health - Division of Radiological Health	MEMA/Department of Health - Division of Radiological Health	MEMA, Division of Radiological Health
MISSOURI	State Emergency Management Agency, Bureau of Radiological Health	Bureau of Radiological Health, MONet	SEMA	SEMA
N. CAROLINA	Division of Emergency Management	Department of Human Resources - Radiation Protection Section	Division of Emergency Management	Division of Emergency Management
OKLAHOMA	OK Civil Defense	State Department of Health - Radiation Protection Division	OK Civil Defense, State Department of Health - Radiation Protection Division	OK Civil Defense
S. CAROLINA	Emergency Preparedness Division	Department of Health and Environmental Control - Bureau of Radiological Health	DHEC, EPD	DHEC, EPD
TENNESSEE	TEMA, State Emergency Operations Center	Division of Radiological Health	TEMA, DHR, local agencies	TEMA, DHR, local agencies
TEXAS	Division of Emergency Management	Bureau of Radiation Control	First responders - Bureau of Emergency Management (TDH) & Division of Emergency Management Technical response - Bureau of Radiation Control	Division of Emergency Management, BRC

ASSIGNMENT JF RESPONSIBILITY (cont.)

	Notification of State and Federal Agencies	Technical Response	Training	Drills and Exercises
VIRGINIA	State Emergency Operations Center	Department of Health	Department of Emergency Services	DES
W. VIRGINIA	Office of Emergency Services	Department of Health, Industrial Hygiene Division, Department of Natural Resources, OES	OES	OES

* Information not verified by state

NOTIFICATION

	24-Hour Point of Contact (Initial Notification)	Lead Agency	Notification Methods	Organizations Notified
ALABAMA *	Department of Public Safety	Emergency Management Agency	Dedicated phone, commercial phone, NAWAS, RACES	Bureau of Radiological Health, state and local agencies
ARKANSAS	Department of Health Emergency Communications Center	Department of Health - Division of Radiation Control	Commercial phone, pager, radio, EBS, NAWAS, NWS	Division of Radiation Control, state and local agencies
FLORIDA	State Emergency Operations Center/State Warning Point	Department of Emergency Management	Dedicated phone, NAWAS, radio, RACES, pager, commercial phone	State, local and federal emergency response personnel
GEORGIA	Department of Natural Resources - Radiation Emergency Coordinator, GA Emergency Management Agency	DNR	Commercial phone, radio, telegraph	State emergency teams, other state agencies as required
KENTUCKY	State Police, Disaster and Emergency Services	DES	Radio, pager, FNAVS, FNATS, FNARS, NAWAS	Radiation Control
LOUISIANA	State Police	State Police, LA Nuclear Energy Division	Commercial phone	State Police, LNEB
MARYLAND	Department of Public Safety and Correctional Services - MD Emergency Management and Civil Defense Agency	MD Emergency Management and Civil Defense Agency	Radio, teletype, EBS, NWS, NAWAS, dedicated phone, pager	Center for Radiological Health, state and local emergency agencies
MISSISSIPPI	MS Highway Safety Patrol (State Warning Point)	MS Highway Safety Patrol, MS Emergency Management Agency	Dedicated phone, commercial phone, radio, NAWAS, NWS	Division of Radiological Health, local, state and federal agencies, Southern Emergency Response Council
MISSOURI	State Emergency Management Agency	State Emergency Management Agency	Dedicated phone, commercial phone	Department of Public Safety
N. CAROLINA	NC State Highway Patrol (State Warning Point)	Division of Emergency Management	Phone, pager, radio	Radiation Protection Section, Division of Emergency Management
OKLAHOMA	Department of Public Safety Communications Center(s)	Department of Public Safety	Radio, OK Highway Patrol, NAWAS, phone, LETS, CONATS, CONARS, CONAVS, EBS	OK Civil Defense, Department of Health, Radiation Protection Division, county officials
S. CAROLINA	Highway Department (State Warning Point), county warning points	SC Emergency Preparedness Division	Phone, radio, FNAVS, FNATS, FNARS, NAWAS, EBS, sirens in 10-mile EPZs	Bureau of Radiological Health, EPD, Governor's Office, state and local agencies in 10 mile EPZ
TENNESSEE	State Emergency Operations Center	Tennessee Emergency Management Agency	NAWAS, EBS radio, pagers	State Emergency Services Coordinators, local governments, federal agencies

NOTIFICATION (cont.)

	24-Hour Point of Contact (Initial Notification)	Lead Agency	Notification Methods	Organizations Notified
TEXAS	Initial point of contact for reporting an accident is any Department of Public Safety District Office or nearest DPS officer. 24-hour points of contact at state level are the Division of Emergency Management (via DPS Headquarters Communications Ctr.) and/or the Bureau of Radiation Control (via after-hours commercial answering service).	Division of Emergency Management	State Law Enforcement Communications System	TX Department of Health, Bureau of Radiation Control, others as needed
VIRGINIA	State Emergency Operations Center	Department of Emergency Services	Dedicated phone, commercial phone, radio, North Anna Emergency Response Computer Network System	Bureau of Radiological Health, local agencies
W. VIRGINIA	Office of Emergency Services	Office of Emergency Services	Commercial phone, FNAVS, NAWAS	

* Information not verified by state

CDNARS - Civil Defense National Radio System
 CDNATS - Civil Defense National Teletype System
 CDNAVS - Civil Defense National Voice System
 EBS - Emergency Broadcast System
 FNARS - Federal National Radio System
 FNATS - Federal National Teletype System
 FNAVS - Federal National Voice System
 LETS - Law Enforcement Teletype System
 NAWAS - National Warning System
 NWS - National Weather Service
 RACES - Radio Amateur Civil Emergency Services

COMMUNICATIONS EQUIPMENT

	Types (Portable, Fixed)	Frequencies	Communications Center Name and Location
ALABAMA *	Fixed		Emergency Operations Center
ARKANSAS	Fixed and portable, mobile units	155.835 MHz, 158.965 MHz, 45.48 MHz	Department of Health Emergency Communications Center
FLORIDA	Fixed and portable radio, mobile units	VHF, UHF, SSB, RACES	State Warning Point Communications Center
GEORGIA	Portable	GEMA - 45.56 MHz, State Patrol - 154.905 MHz, DNR - 31.10 MHz - 31.22 MHz	Emergency Operations Center in accident vicinity, GEMA EOC, DNR EOC (both in Atlanta)
KENTUCKY	Fixed and portable	Division of Disaster and Emergency Services - 45.400 MHz, Department of Military Affairs - 44.40 MHz, Emergency Broadcast Service - 455.250 MHz	State Emergency Operations Center Boone National Guard Center - Frankfort, KY.
LOUISIANA	Fixed, portable and mobile	800 MHz range	LNED, state police, EOC - Baton Rouge
MARYLAND	Fixed, vehicle mounted and portable	44.90	Systems Communications Center (SYSCOM)
MISSISSIPPI	Portable and fixed		State Emergency Operations Center
MISSOURI			
N. CAROLINA	Fixed and portable	Division of Emergency Management Area Net - 47.58; DEM Sideband - 3.201; DOT radios - 47.14, 47.26, 47.32, 47.38 (122 base and 880 mobile); State Highway Patrol	State Emergency Operations Center
OKLAHOMA	Fixed & mobile (in vehicles)	44.7 MHz, 45.22 MHz, 155.235, 155.480, 155.760, 155.125MHz 800 MHz (Troop A area)	Department of Public Safety Communications Center, State Emergency Operations Center
S. CAROLINA	Portable and fixed	Local government radio network	Forward Emergency Operations Center, State Emergency Operations Center
TENNESSEE	Fixed, portable and mobile	VHF, high and low bands, UHF	Statewide
TEXAS	Fixed and portable	Department of Public Safety - multiple frequencies, BRC - 5 frequencies, including inter-city law enforcement frequency	Department of Public Safety Headquarters - Austin
VIRGINIA	Portable radio back-up	153.995 MHz, 155.995 MHz, 155.820 MHz, 155.205 MHz	Emergency Operations Center
W. VIRGINIA	Fixed, mobile and portable	Numerous governmental, plus CAP and RACES	Office of Emergency Services

* Information not verified by state

TECHNICAL RESPONSE

	Lead Agency	Response Teams	Location of Resources	Equipment (Portable, Mobile Lab)
ALABAMA *	Division of Radiological Health		Environmental lab - Montgomery	Portable instrumentation
ARKANSAS	Department of Health - Division of Radiation Control	Division of Radiation Control	Radiochemistry lab - Little Rock	Fixed and portable instrumentation
FLORIDA	Department of Health and Rehabilitative Services	Primary response team - Orlando Other response - statewide	Orlando, Miami, Jacksonville, Tampa, Ft. Meyers, Pensacola, Tallahassee, Winter Park, Ft. Lauderdale, St. Petersburg, Winter Haven	Mobile emergency radiological laboratory and portable instrumentation
GEORGIA	Department of Natural Resources	State Emergency Response Teams	Atlanta/Brunswick local EOC and fixed nuclear facility	Portable instrumentation
KENTUCKY	Cabinet for Human Resources	Radiation Control Office staff	Radiation Control Office - Frankfort	Portable instrumentation
LOUISIANA	LA Nuclear Energy Division	Field Monitoring Teams	Baton Rouge	Portable instrumentation
MARYLAND	Department of the Environment - Center for Radiological Health	Field Monitoring Teams Accident Assessment Center	Department of Health and Mental Hygiene, Laboratories Administration Radiochemistry Labs - Baltimore, MD	Portable instrumentation and Mobile Emergency Radiological Laboratory
MISSISSIPPI	Division of Radiological Health	Radiological Emergency Response Team	Jackson	Mobile labs, portable instrumentation
MISSOURI	Bureau of Radiological Health	Bureau of Radiological Health, MONet	Jefferson City, other locations	Portable instrumentation
N. CAROLINA	Department of Human Resources - Radiation Protection Section	State Emergency Response Team	Raleigh	Portable instrumentation and mobile radiological laboratory
OKLAHOMA	State Department of Health, Radiation Protection Division	State Department of Health, Radiation Protection Division	State Department of Health, Oklahoma City	Portable radiation instrumentation, Mobile Emergency Operations Center, radiological laboratory (no mobile)
S. CAROLINA	Department of Health and Environment Control - Bureau of Radiological Health	Emergency Radiological Assistance Teams	State Emergency Operations Center - Columbia, Forward Emergency Operations Centers - Clemson, Darlington, Wainsboro, Clover, Graniteville	Portable instrumentation and mobile laboratory
TENNESSEE	Division of Radiological Health	State Radiological Response Team, Local Government Radiological Response Teams	Nashville, Knoxville, Memphis and Chattanooga	Portable instrumentation
TEXAS	Bureau of Radiation Control	Accident Assessment Team; Field Monitoring; Contamination Control; Sample Preparation and Coordination; Decontamination Assistance; Medical Facility Liaison; and State, Disaster District and Local Government EOC Liaisons	Statewide in Public Health regional offices. Mobile laboratory and emergency response vehicle in Austin.	Portable instrumentation and mobile lab

TECHNICAL RESPONSE (cont.)

	Lead Agency	Response Teams	Location of Resources	Equipment (Portable, Mobile Lab)
VIRGINIA	State Department of Health	Radiological Emergency Response Team, Logistical Support Team, Monitoring Unit	Richmond	Mobile laboratory
W. VIRGINIA	Department of Health	State Radiological Response Teams	Office of Emergency Services and Department of Health	Portable instrumentation

TECHNICAL RESPONSE (cont.)

	Lab and Sample Analysis Support Locations/Organizations
ALABAMA *	
ARKANSAS	Radiochemistry lab of Department of Health, Division of Public Health Laboratories
FLORIDA	Office of Radiation Control Health Physics Lab - Orlando, University of Florida Department of Environmental Engineering - Gainesville, HFS Polk County Public Health Unit - Winter Haven
GEORGIA	Environmental Protection Division - Environmental Radiation Lab, Georgia Tech Research Institute, Mobile Radiation Laboratory
KENTUCKY	Office of Radiation Control Radiochemical Laboratory - Frankfort
LOUISIANA	LNED Environmental Surveillance Laboratory - Baton Rouge, LSU Nuclear Science Center
MARYLAND	Department of Health and Mental Hygiene Laboratories Administration's Radiochemistry Laboratory - Baltimore, Maryland
MISSISSIPPI	MS Department of Health Radiological Health Lab; Mobile Radiological Emergency Lab; EPA labs in Montgomery, AL and Las Vegas, NV
MISSOURI	
N. CAROLINA	DHR - Division of Health Services, Laboratory Section of Environmental Sciences Branch; NC State University; UNC - Chapel Hill
OKLAHOMA	Radiochemistry Lab, Radiation Protection Division, State Department of Health, Oklahoma City - possible some analysis support from Nuclear Medicine Labs in hospitals and universities throughout the state.
S. CAROLINA	Department of Health and Environmental Control - Bureau of Radiological Health (mobile lab and HQ), Clemson University Extension Service, Local Emergency Operation Center, Utilites
TENNESSEE	TN Department of Health and Environment, Division of Laboratory Services, Nashville, TN
TEXAS	Texas Department of Health lab, Austin University of Texas lab, Austin Texas A&M University lab, Austin
VIRGINIA	Division of Consolidated Lab Services, Radiation Safety Office, Bureau of Radiological Health Mobile Lab
W. VIRGINIA	Department of Health; West Virginia University; Marshall University

* information not verified by state

MEDICAL SUPPORT

	Agency Responsible: Coordination	Agency Responsible: Transportation	# of Ambulance Services Capable of Transporting Contaminated Personnel	# of Hospitals with Radiation Capabilities
ALABAMA *	Division of Radiological Health	Ambulance companies, rescue squads	10	19
ARKANSAS	Department of Health - Emergency Communica- tions Center		Unknown	6;
FLORIDA	Department of Health and Rehabilitative Ser- vices	DHRS		41
GEORGIA	Department of Human Resources	Ambulance services		58
KENTUCKY	Cabinet for Human Resources	Emergency Transportation Service		
LOUISIANA	Office of Hospitals, Bureau of Emergency Ser- vices, Department of Health/Hospitals	Parish Offices of Emergency Preparedness, Par- ish sheriffs' offices	9	3
MARYLAND	MD Institute for Emergency Medical Services	Natural Resources Police, State Police, Depart- ment of Transportation	9	4
MISSISSIPPI	Division of Radiological Health		11	9
MISSOURI				
N. CAROLINA	Department of Human Resources - Emergency Medical Services Section	Local agency - both county and municipal, paid and volunteer	Most local government or volunteer services have capability	50+
OKLAHOMA	Department of Health			
S. CAROLINA	Department of Health and Environmental Control - Emergency Medical Services	Public Service Commission - Division of Trans- portation	200	35
TENNESSEE	Department of Health and Environment (Division of Radiological Health and Bureau of Health)	Tennessee Emergency Management Agency, Division of Radiological Health, Emergency Med- ical Services	7 trained and exercised	All accredited hospitals have a plan for handling radiological emergencies
TEXAS	Department of Health	Local EMS	100+	100+
VIRGINIA	Department of Health	Local health departments	66	16
W. VIRGINIA	Department of Health	Department of Health - Office of Emergency Medical Services		

* Information not verified by state

PUBLIC INFORMATION

	Agency Responsible: General Public Information	Agency Responsible: Emergency Information	Designated Spokesperson
ALABAMA *	Radiation Control Branch, Emergency Management Agency	Joint Media Center	Governor's Press Secretary
ARKANSAS	Department of Health - Division of Radiation Control	Office of Emergency Services Department of Health	Office of Emergency Services Public Information Officer Department of Health Public Information Officer
FLORIDA	Division of Emergency Management	Emergency News Center Division of Emergency Management	Governor's Authorized Representative, DEM
GEORGIA	DNR, DHR, GEMA	DNR, GEMA	Information Officer(s)
KENTUCKY	Division of Disaster and Emergency Services Public Information Coordinator	Emergency Communications Center	DES Public Information Coordinator
LOUISIANA	LA Nuclear Energy Division	LNED	LNED Public Information Officer
MARYLAND	Department of Public Safety and Correctional Services - MD Emergency Management and Civil Defense Agency	Nuclear facilities, State Emergency Operations Centers (MEMCCL 4)	Governor's Press Secretary
MISSISSIPPI	MS Emergency Management Agency	MEMA, Division of Radiological Health	Governor's Press Secretary, Division of Radiological Health - PIO
MISSOURI	State Emergency Management Agency	SEMA Director, Department of Public Safety	SEMA Director
N. CAROLINA	Department of Crime Control and Public Safety, Department of Human Resources	DCC & PS	Secretary of Crime Control and Public Safety
OKLAHOMA	OK Civil Defense	State Department of Health, Radiation Protection Division	Spokesman designated on case-by-case basis.
S. CAROLINA	Public Information Service - Office of the Governor	State Public Information Response Group, Near-Site Media Cen- ter	Governor's Press Secretary
TENNESSEE	Governor's Office	Governor's Office, TEMA	Governor's Press Secretary
TEXAS	Division of Emergency Management & local government	Division of Emergency Management, BRC & local government	Division of Emergency Management - State Coordinator or Emergency Information Planner BRC - designated spokesperson at scene, Public Information Coordinator at Joint Information Center or at Bureau headquar- ters Local government - as designated in local plan

PUBLIC INFORMATION (cont.)

	Agency Responsible: General Public Information	Agency Responsible: Emergency Information	Designated Spokesperson
VIRGINIA	Department of Emergency Services, local governments	Local governments	Governor's Office or DES Public Information Office
W. VIRGINIA	Office of Emergency Services	Office of Emergency Services	Governor's Press Secretary

* Information not verified by state

TRAINING

	Responsible Organizations	Course Subject and Generic Content	Course Duration	Frequency	Is there any transportation emergency training? if so, what type?
ALABAMA *	Emergency Management Agency, Division of Radiological Health	Radiation hazards, operation procedures, exposure control, instrumentation, decontamination	Initial - 2 hours, refresher - 1 hour	Annually	
ARKANSAS	Department of Health - Division of Radiation Control	Radiation hazards, operation procedures, exposure control, instrumentation, decontamination	Initial - 6 hours	Annually, refresher as needed	
FLORIDA	State and county agencies	Radiological terminology, fundamentals, protective action guides, response planning, specialized training	Varies with subject and personnel	Refresher training as needed	Transportation emergency drills for Department of Health and Rehabilitative Services teams
GEORGIA	Department of Natural Resources, Department of Human Resources, Department of Defense	Basic protection, use of instruments and equipment, decontamination, recovery, immediate response, personnel monitoring	Initial - 8 hours, refresher - 4 hours	Annual refresher at fixed nuclear facility	
KENTUCKY	Division of Disaster and Emergency Services, county agencies			Refresher as needed	
LOUISIANA	LA Nuclear Energy Division, LA office of Emergency Preparedness	Radiological exposure control, decontamination, basic radiological health, first responder	Varies with subject	Annually	Included in courses provided
MARYLAND	MD Emergency Management & Civil Defense Agency, County Civil Defense Agency, MD Department of the Environment - Center for Radiological Health	Accident assessment, monitoring, radiological analysis, first aid, medical and rescue operations	Variable	Annual retraining as needed	No
MISSISSIPPI	MS Emergency Management Agency, Division of Radiological Health	Radiological monitoring, basic protection, instrumentation, decontamination	2 hours to 32 hours	Annually and as needed	
MISSOURI	State Emergency Management Agency				
N. CAROLINA	Division of Emergency Management	FCRM & FRRT	FCRM - 12 hours FRRT - 32 hours	As requested	Yes - hazmat for first responder course (3 hours) and emergency medical (3 hours)
OKLAHOMA	OK Civil Defense and State Department of Health, Radiation Protection Division	Basic protection, use of instruments and equipment, decontamination, recovery, immediate response, personnel monitoring			
S. CAROLINA	Emergency Preparedness Division	Emergency response, radiological assessment, radiological monitoring	Variable	Annually	Very limited - sponsored by DOT

TRAINING (cont.)

	Responsible Organizations	Course Subject and Generic Content	Course Duration	Frequency	Is there any transportation emergency training? If so, what type?
TENNESSEE	TN Emergency Management Agency, Division of Radiological Health, state agencies, local government	Basic health physics, radiological emergency response instrumentation	Radiological Monitor - 12 hours Radiological Response Team - 31 hours Radiological Monitor Inst. - 24 hours Rad Officer - 32 hours Hospital Emergency Rm. - 9 hours	Monthly Quarterly Semi-annual Annually As requested	Yes
TEXAS	Division of Emergency Management, Bureau of Emergency Management, Bureau of Radiation Control	Comprehensive Emergency Management - decisionmakers' orientation Hazardous Materials Accident Response - first responder instruction Radiological Monitoring & Decontamination - technical team actions	Varies with subject	Annual review, training as needed	In addition to those listed, specific training will include response plan (TAB 4) orientation and DOE WIPP response training where appropriate.
VIRGINIA	Department of Emergency Services	Radiological training, emergency response, decontamination	Variable	Ongoing	
W. VIRGINIA	Office of Emergency Services	Radiological monitoring and response	Varies with position of trainee	Annual refresher courses	

* Information not verified by state

DRILLS AND EXERCISES

	Coordinating Agency	Types/Frequency	Comments	Do these drills and exercises apply to transportation?
ALABAMA *	Emergency Management Agency	Communications/monthly and annually, medical/annually, radiological monitoring/annually, health physics/semi-annually	Field exercise annually at NPP. Each six years exercise between 6pm - 12am and 12am - 6am	
ARKANSAS	Department of Health - Division of Radiation Control	Communications/monthly and annually, medical/annually, radiological monitoring/annually, health physics/semi-annually		
FLORIDA	Division of Emergency Management	Communications/variable, medical/annually, radiological monitoring/annually, health physics/semi-annually	State full participation/perennially in NPP joint exercise, partial participation at each site exercise	No
GEORGIA	Department of Natural Resources	Communications, table top exercises, field drill/annually, radiological transportation accident drill/periodically	Field exercises bi-annually at FNF	
KENTUCKY	Division of Disaster and Emergency Services		No nuclear power plants are in operation in or within 50 miles of Kentucky	
LOUISIANA	LA Nuclear Energy Division, LA Office of Emergency Preparedness	Not specifically for transportation	Full-scale FNF exercise biennially w/ federal participation every six years	
MARYLAND	Department of Public Safety and Correctional Services - MD Emergency Management & Civil Defense Agency	Communications/variable, medical/biennially or annually, radiological monitoring/biennially, accident assessment/semi-annually	Full-scale FNF exercise biennially at each of two FNF in area	No
MISSISSIPPI	MS Emergency Management Agency, Division of Radiological Health	Communications/monthly or annually, medical/annually, health physics and radiological monitoring/annually and semi-annually	Annual exercises and/or drills	
MISSOURI	State Emergency Management Agency	Communications/monthly with fixed facility, health physics/semi-annually, local radiological/frequently		Apply to all types of radiological scenarios
N. CAROLINA	Division of Emergency Management	Communications/monthly, medical and radiological monitoring/annually, health physics/semi-annually	Full-scale FNF exercise at least every 2 years	Not directly
OKLAHOMA	OK Civil Defense	Emergency preparedness/periodic		Yes, usually
S. CAROLINA	Emergency Preparedness Division	Communications/variable, FNF field exercise/biennially, health physics/semi-annually, radiological monitoring/annually, fire/variable, siren/variable	State full participation annually, partial participation at each site exercise 2-3 times/year	No
TENNESSEE	Tennessee Emergency Management Agency, Division of Radiological Health and local government	Communications, FNF, radiological health, assessment, transportation	Table top, functional, full scale	Yes

DRILLS AND EXERCISES (cont.)

	Coordinating Agency	Types/Frequency	Comments	Do these drills and exercises apply to transportation?
TEXAS	Division of Emergency Management for multi-agency exercises Bureau of Emergency Management for first responder exercises Bureau of Radiation Control for response team drills & exercises	First responder drills and exercises are typically conducted annually for most local jurisdictions. Other aspects are exercised as part of fixed nuclear facility accident response drills and exercises as per NUREG-0654/FEMA-REP-1.	A full-scale exercise is proposed in conjunction with DOE training for Wipp shipment accident response	Yes. As stated at the beginning of our response, all answers apply specifically to transportation accident response unless otherwise noted.
VIRGINIA	Department of Emergency Services	Plant exercises/semi-annually	Two power stations, full-scale exercise annually staggered at each station	No
W. VIRGINIA	Office of Emergency Services	Communications/monthly, radiological monitoring/annually		Yes

* Information not verified by state

ASSISTANCE AGREEMENTS

	Emergency Response Assistance Agreements	Letters of Agreement (w/DOE, EPA)
ALABAMA *	Southern Mutual Radiation Assistance Plan	
ARKANSAS	Southern Mutual Radiation Assistance Plan	None
FLORIDA	Southern Mutual Radiation Assistance Plan, REACTS	
GEORGIA	Southern Mutual Radiation Assistance Plan	
KENTUCKY	Southern Mutual Radiation Assistance Plan	
LOUISIANA	Louisiana State University Nuclear Science Center, Southern Mutual Radiation Assistance Plan	Not necessary - assistance available through FRERP
MARYLAND	MOUs with District of Columbia, Virginia, West Virginia; MOU pending with Pennsylvania, Delaware, New Jersey	Coast Guard, Red Cross, St. Mary's Hospital, Union Hospital (Cecil Co.)
MISSISSIPPI	Southern Mutual Radiation Assistance Plan	
MISSOURI	Southern Mutual Radiation Assistance Plan	
N. CAROLINA	Southern Mutual Radiation Assistance Plan	
OKLAHOMA	Agreement between Civil Defense and local support groups, Southern Mutual Radiation Assistance Plan, mutual ad/response agreements between/among fire departments to respond upon request outside normal jurisdiction	
S. CAROLINA	Southern Mutual Radiation Assistance Plan, MOUs with North Carolina, Georgia, utilities	
TENNESSEE	Southern Mutual Radiation Assistance Plan	
TEXAS	Agreements with University of Texas, Texas A&M University; Southern Mutual Radiation Assistance Plan	No
VIRGINIA	Agreements with Maryland, U.S. Navy; agreements between appropriate labs	
W. VIRGINIA	Agreements between Civil Air Patrol, RACES and Office of Emergency Services	

* Information not verified by state

**DATE
FILMED**

8 / 6 / 93

END

