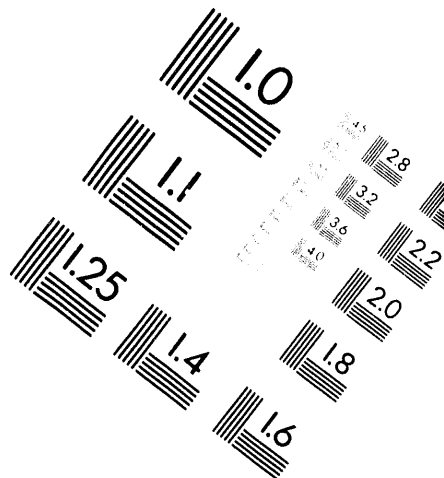
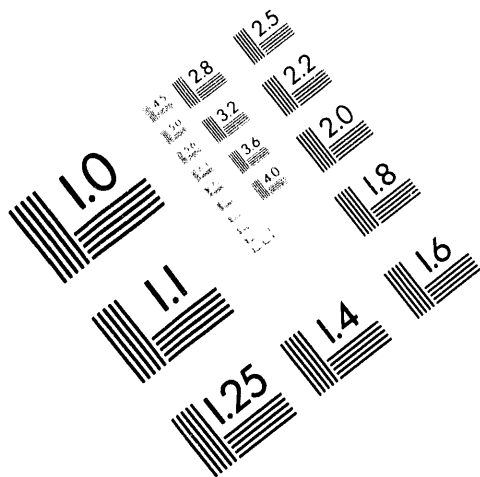




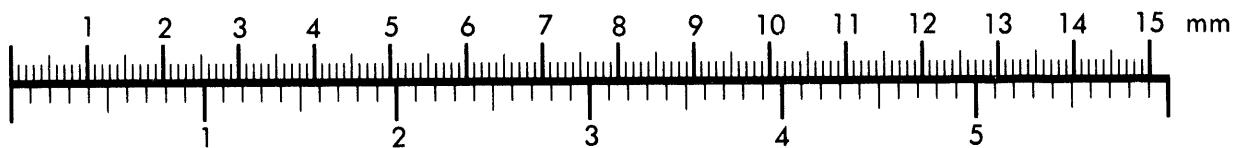
**AIIM**

**Association for Information and Image Management**

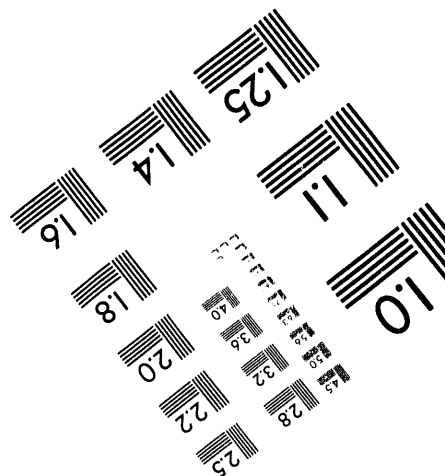
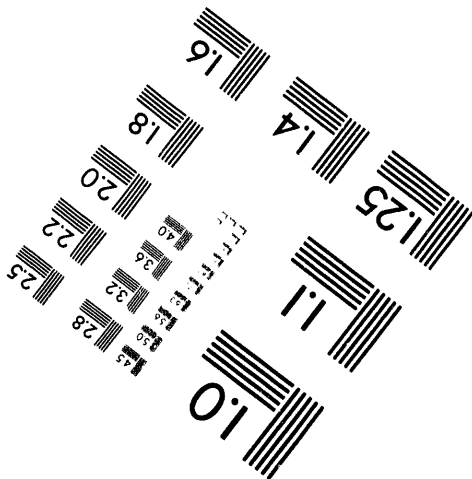
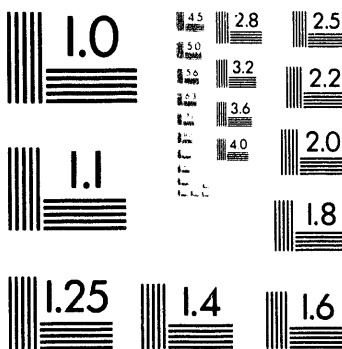
1100 Wayne Avenue, Suite 1100  
Silver Spring, Maryland 20910  
301/587-8202



**Centimeter**



**Inches**



MANUFACTURED TO AIIM STANDARDS  
BY APPLIED IMAGE, INC.

**1 of 1**

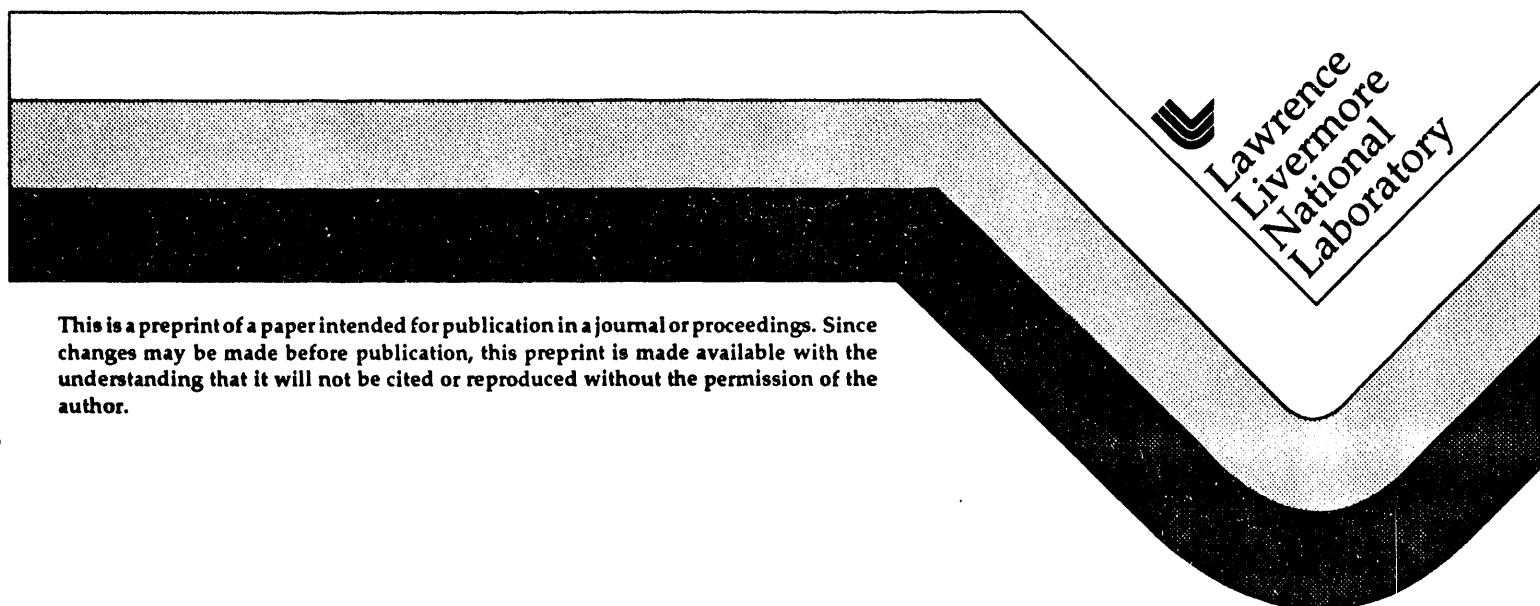
UCRL-JC-116229  
PREPRINT

## Sorting and Hardware Assisted Rendering for Volume Visualization

C. Stein  
B. Becker  
N. Max

This paper was prepared for submittal to  
*1994 Symposium on Volume Visualization*  
Washington, DC  
October 17-18, 1994

March 1994



This is a preprint of a paper intended for publication in a journal or proceedings. Since changes may be made before publication, this preprint is made available with the understanding that it will not be cited or reproduced without the permission of the author.

# MASTER

#### DISCLAIMER

This document was prepared as an account of work sponsored by an agency of the United States Government. Neither the United States Government nor the University of California nor any of their employees, makes any warranty, express or implied, or assumes any legal liability or responsibility for the accuracy, completeness, or usefulness of any information, apparatus, product, or process disclosed, or represents that its use would not infringe privately owned rights. Reference herein to any specific commercial products, process, or service by trade name, trademark, manufacturer, or otherwise, does not necessarily constitute or imply its endorsement, recommendation, or favoring by the United States Government or the University of California. The views and opinions of authors expressed herein do not necessarily state or reflect those of the United States Government or the University of California, and shall not be used for advertising or product endorsement purposes.

# Sorting and Hardware Assisted Rendering for Volume Visualization

Clifford Stein  
Barry Becker  
Nelson Max

Lawrence Livermore National Laboratory  
Livermore, CA 94551 U.S. A.

## Abstract

*We present some techniques for volume rendering unstructured data. Interpolation between vertex colors and opacities is performed using hardware assisted texture mapping, and color is integrated for use with a volume rendering system. We also present an  $O(n^2)$  method for sorting  $n$  arbitrarily shaped convex polyhedra prior to visualization. It generalizes the Newell, Newell and Sancha sort for polygons to 3-D volume elements.*

## Introduction

This project grew out of the need to visualize unstructured meshed vector fields such as those found in existing finite element analysis code. Some volume rendering applications do not require more than one color. However, we have developed a visualization tool for rendering multi-colored elements, such as colored flow volumes in a vector field, using an implementation of the Shirley-Tuckman [1] algorithm. While monochromatic elements can be composited in any order as shown by [2], datasets containing many colors must be composited in either a back-to-front or front-to-back order. Indeed, most volume rendering applications have color and opacity variations which require sorting.

This paper describes the visualization tool we have developed which can display a set of convex, non-intersecting polyhedra, with colors and opacities assigned to each vertex, using hardware assisted texture mapping. It uses an implementation of the Shirley-Tuckman algorithm to render the polyhedra once they have been subdivided into tetrahedra. Rendering colored volumes requires compositing the elements in a back to front order. Hence, we present an algorithm that sorts these unstructured elements before they are subdivided. The algorithm will correctly sort unstructured topologies of convex polyhedra that are devoid of cycles and intersections.

## Volume Rendering

We have developed a new volume rendering approximation which takes advantage of texture mapping and compositing available on modern graphics workstations. This allows tetrahedra to be composited by the Projected Tetrahedra algorithm of Shirley and

Tuckman, without artifacts due to linear approximation of the non-linear opacity effects.

The Shirley-Tuckman algorithm classifies the projection of each tetrahedron into one to four cases consisting of one to four triangles. Figure 1 shows the two non-degenerate cases, where no vertex projects onto another vertex or edge.

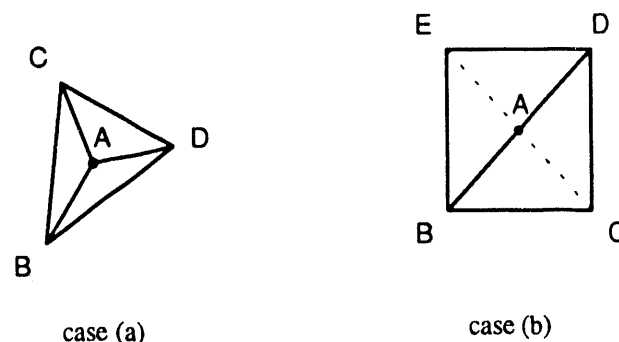


Figure 1.

A tetrahedron can project to three triangles as in case (a), or four triangles as in case (b). Each case has a single "thick" vertex A; the other vertices on the profile are called "thin". The thick vertex is the projection of the 3-D segment  $A_0A_1$  where a viewing ray intersects the tetrahedron. In case (a),  $A_0$  is A, and  $A_1$  lies on the face BCD. In case (b),  $A_0$  is on edge BD, and  $A_1$  is on edge CE. Let  $l$  be the length of segment  $A_0A_1$ .

Assume that the color  $C(x)$  and extinction coefficient  $\tau(x)$  vary linearly across the tetrahedron. Then these quantities can be interpolated across faces or edges to give values  $\tau_0=\tau(A_0)$ ,  $C=C(A_0)$ ,  $\tau_1=\tau(A_1)$  and  $C_1=C(A_1)$ . Shirley and Tuckman show that the total opacity  $\alpha$  of a

segment  $A_0A_1$  is  $\alpha = 1 - \exp((\tau_0 + \tau_1)/2)$ , where  $l$  is the length of the ray segment  $A_0A_1$ . The opacity at the profile vertices is zero. They approximate the color at the thick vertex to be  $(C_0 + C_1)/2$ ; we will improve this.

For each triangle, the color and opacity are interpolated linearly from the three vertex values to the interior, usually along the edges and then across scan lines, as in Gouraud shading. Then the interpolated color  $C_i$  and opacity  $\alpha_i$  are composited over the old pixel color  $C_{old}$  to give the new color  $C_{new}$ , by the formula:  $C_{new} = \alpha_i C_i + (1 - \alpha_i) C_{old}$ . Often the linear interpolation and compositing steps can be performed by special purpose pipelined and/or parallel hardware available in the rendering engines of a graphics workstation.

The Projected Tetrahedra algorithm has several artifacts which produce incorrect colors, or Mach bands revealing the subdivision into tetrahedra. The first artifact comes from the linear interpolation of the color and opacity across the tetrahedra. This interpolation is not  $C^1$  across the faces, and can produce Mach bands, particularly at faces which are parallel to the viewing direction and project to lines. The only cure is higher order interpolation, which is not available in hardware on most workstations.

However, there is a more serious problem with the algorithm, which occurs even when the color  $C$  and extinction coefficient  $\tau$  are constant. The problem is easiest to understand when the color is zero, so that the image shows an opacity cloud hiding the background, and in 2-D, where the tetrahedra become triangles. Consider a strip of triangles  $T_0, T_1, T_2, \dots$  of a constant width  $l$  as shown in Figure 2(a), projected vertically to a scan line. In triangle  $T_1$ ,  $C$  is the "thick" vertex, where the opacity  $\alpha = \exp(-\tau l)$ , and  $\alpha=0$  at  $B$  and  $D$ . Figure 2(b) is a graph of the transparency  $t_1(x) = 1 - \alpha_1(x)$  along the scan line, which is used to multiply the background color during compositing of triangle  $T_1$ . It is piecewise linear, because the opacity  $\alpha(x)$  has been linearly interpolated across the scan line segments  $BC$  and  $CD$ . Similarly, Figure 2(c) shows the transparency  $t_2(x)$  from triangle  $T_2$ . The final transparency along the segment  $CD$ , resulting from compositing both triangles on top of the background is the product  $t(x) = t_1(x)t_2(x)$ , shown as the quadratic polynomial segment above  $CD$  in Figure 2(d).

To derive the form of this quadratic polynomial, let  $x = sD + (1-s)C$  be the point a fraction  $s$  of the way from  $C$  to  $D$ .

Then

$$\begin{aligned} t_1(x) &= 1 - \alpha_1(x) \\ &= 1 - (s \cdot 0 + (1-s)\exp(-\tau l)) \\ &= 1 - (1-s)\exp(-\tau l) \end{aligned}$$

and similarly

$$t_2(x) = 1 - \alpha_2(x) = 1 - s \cdot \exp(-\tau l).$$

Thus

$$t(x) = t_1(x)t_2(x) = 1 - \exp(-\tau l) + s(1-s)(\exp(-\tau l))^2.$$

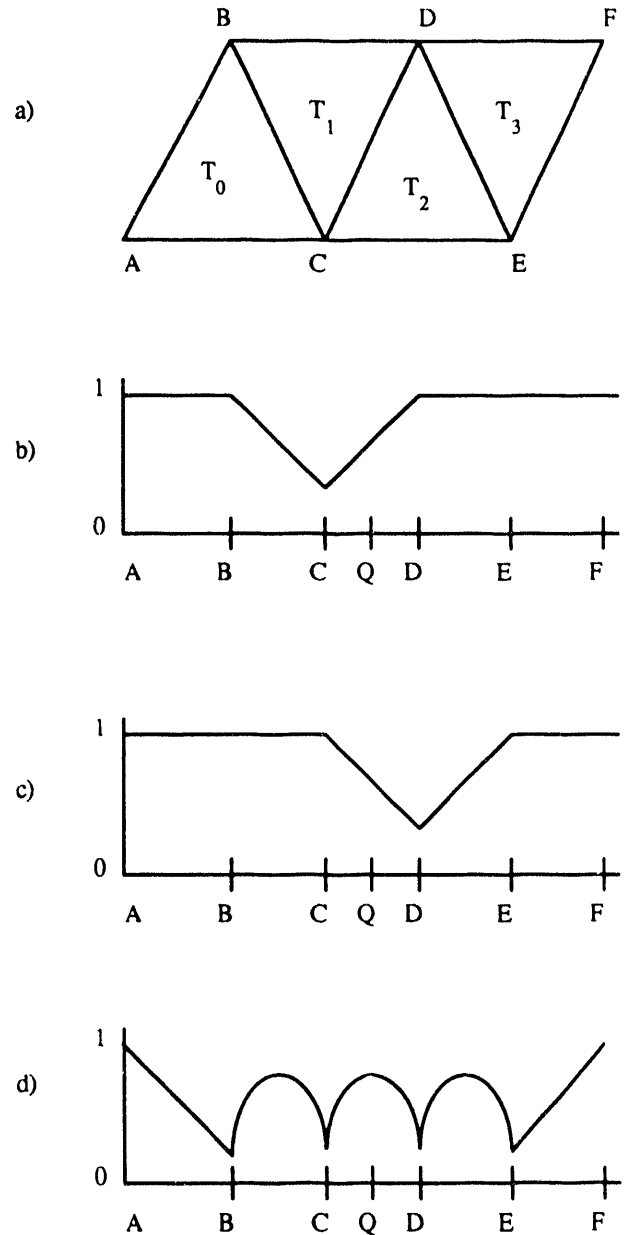


Figure 2

The transparency should actually be  $1-\exp(-\tau l)$ , so the quadratic term  $s(1-s)(\exp(-\tau l))^2$  represents the error due to approximating  $t_1(x)$  and  $t_2(x)$  linearly.

Other similar quadratic segments come from other projected diagonal edges, and the final intensity, proportional to the transparency if the background is uniform, is not  $C^1$ . In three dimensions, the corresponding effect produces Mach bands along the projection of edges of the tetrahedra.

The solution to this problem is to define  $\alpha_1(x)$  correctly as  $1-\exp(-\tau l)$ . This requires a linear interpolation of the quantity  $\tau l$ , and then an exponent per pixel, which is not commonly available in hardware. Instead, we have used the texture map table available on our SGI Onyx™ system. For the case of constant  $\tau$  per tetrahedron, as in our flow volume application, we put the quantity  $1-\exp(-u)$  in a one dimensional texture table, indexed by  $u$  [2]. The texture coordinate  $u$  was set to zero at the thin vertices of each triangle, and to  $\tau l$  at the thick vertex, and was interpolated by the shading hardware, before being used as an address to the texture table.

If  $\tau$  varies linearly within each tetrahedron the product  $\tau l$  varies quadratically inside each triangle. Quadratic interpolation of texture coordinates was implemented in hardware on the Apollo DN10000VS [3], but was not available on our Onyx™. Therefore we used a 2-D texture table, with coordinates  $\tau$  and  $l$ , and put  $1-\exp(-\tau l)$  in the table.

Now consider the case when the color also varies linearly across the tetrahedron. The Shirley-Tuckman approximation  $(C_0+C_1)/2$  for the color of the thick vertex is not precise; it weights the two colors equally. Actually, the frontmost color should have greater weight, because the opacity along the ray segment hides the rear color more than the front one. Williams and Max [4] have found an exact formula for the color in this case, which they implement with the aid of table lookups. However, the supplementary arithmetic required goes far beyond what is practical in hardware computation at each pixel. As a compromise, we have used the exact analytic form of the color of the thick vertex, and then used the hardware to interpolate the color across each triangle. The colors of the thin vertices come from the original color specification, and the opacity is determined, as above, from a texture table. This compromise can be implemented entirely in hardware, and gives a fairly smooth color variation that seems to move appropriately when a colored volume density rotates.

Figures 7(a), (b), (d) and (e) all use texture mapping for the opacity. Figures 7(a) and (b) show a triangular prism divided into three tetrahedra. Figure 7(a) uses the average color  $(C_0+C_1)/2$  at the thick vertices, while Figure 7(b) uses the more accurate color integration of Williams and Max [4]. Note that in Figure 7(b) the color of the yellow-orange vertex closest to the viewer is more prominent, as it should be. Figure 7(c) shows a  $2 \times 2 \times 2$  array of cubes, each divided into five tetrahedra, and rendered by linearly interpolated opacities. Notice the Mach Bands predicted in Figure 2. Figure 7(d) shows the same volume using the texture mapping for more accurate opacities, and is much improved.

## The Sorting Algorithm

Because the Shirley-Tuckman algorithm allows us to scan convert entire polyhedra very quickly as opposed to the other point sampling methods that calculate the color and intensity color integration on a point by point basis, we needed to devise an efficient algorithm that would sort unstructured meshed elements in a back to front order. Our implementation will correctly sort arbitrarily shaped convex elements in a back to front order as long as there are no cycles or intersections in the data set. Each polyhedron can then be subdivided into a set of tetrahedra for rendering. If a convex mesh is structured so that cells meet on common faces, and this topological information is stored in an adjacency graph, then the adjacency graph can be used to produce a back-to-front sort (see [10] or [11]). However, we wanted to handle unstructured meshes where this data is unavailable. Such examples are sliding interfaces, where cells meet on only part of their faces, and non-convex meshes, such as those with cavities. Figure 3 shows such a mesh of a piston in a cylinder. We therefore extended the Newell, Newell and Sancha sort for polygons to correctly handle convex polyhedra. The sort will perform no subdivisions in the case of intersecting polyhedra or cycles, and will instead arbitrarily choose a drawing order for the problem causing polyhedra.

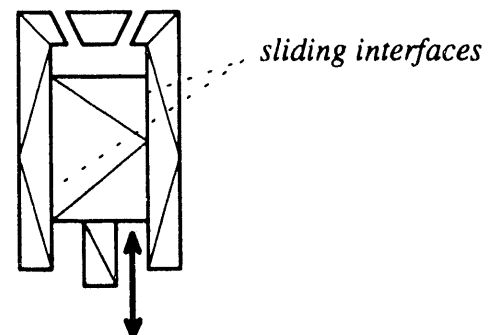


Figure 3.

This algorithm is a three dimensional extension of the Newell, Newell and Sancha painter's algorithm [5-8] and operates on the volumes after having performed all of the perspective transformation operations. Once the elements have been sorted in back-to-front order, they can be fed to the volume renderer for scan conversion and compositing, using the techniques described above.

There are three stages to the sorting process. The first applies all viewing transformations on the vertices to obtain the screen coordinates with a perspective corrected Z. The second obtains a rough sorting of the polyhedra based on the rearmost Z component of each element. Because we have applied the viewing transformation to all vertices and have scaled Z so as to correct for perspective, we would like to sort by increasing Z; the eye looks down the Z axis towards negative infinity in a right-handed coordinate system. In our implementation, this rough sort was obtained through an  $O(n \log n)$  QuickSort. The third stage, or "fine tuning" of the sort, is a bit more complicated. However, like the painter's algorithm approach, it is also broken down into multiple steps with each one increasing in computational complexity, in hopes that a majority of the polyhedra will pass the earlier and less expensive tests.

The goal of the fine tuning is to find a separating plane between two polyhedra, P and Q, such that it can be determined whether or not P can safely be drawn before Q. The fine tuning process can be broken down into five steps in order to efficiently find this separating plane. Given a list H of polyhedra roughly sorted by increasing Z coordinate of the rearmost vertex (called  $Z_{\text{rearmost}}$ ), let polyhedron P be at the head of the list. P can be safely rendered if, for all polyhedra Q in the list H whose  $Z_{\text{rearmost}}$  is less than (behind) P's  $Z_{\text{frontmost}}$ , the following function returns a value of True:

```
Test_Polyhedra(P,Q)
{
    if (P and Q do not have
        overlapping X extents) return True
    else if (P and Q do not have
        overlapping Y extents)
        return True
    else if (P is behind a
        back-plane of Q) return True
    else if (Q is in front of a
        front-plane of P) return True
    else if
        (Q != EdgeIntersection(P,Q))
        return True
    else return False
}
```

The function EdgeIntersection(P,Q) returns the polyhedron which it determines to be in front. It makes this decision by looking for intersections between the

edges of P's projection and the edges of Q's projection. If one is found, it finds the Z component of that intersection point for P and for Q, and returns the polyhedron whose  $Z_{\text{intersection}}$  is closer to the eye. In the case that they are both equal, then we continue searching for intersections looking for an inequality between the two  $Z_{\text{intersection}}$  components.

If the above function returns a False, then polyhedra P and Q are considered to be in the wrong order and Q should be moved to the head of the list and the tests should be repeated with Q becoming the new P. It is possible that the list H could contain a cycle. For instance, if polyhedron A obscures B, and B obscures C, and C, in turn, obscures A, then there is no correct ordering for the polyhedra involved. Figure 4 illustrates a traditional cycle for three polyhedra. The existence of a cycle is easily determined by tagging polyhedron Q before inserting it at the head of the list after the Test\_Polyhedra() function fails. If Q has already been tagged, then a cycle exists and it will need to be addressed.

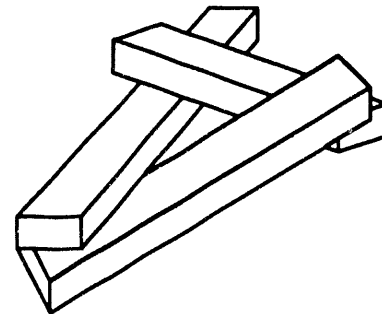


Figure 4.

If polyhedron P passes the tests for all polyhedra Q where  $Q_{\text{rear}}$  is less than  $P_{\text{front}}$ , then polyhedron P is free to be rendered; the tests have determined that P will not obscure any polyhedra which are considered to be in front of it. P is then shipped to the renderer and the next polyhedron in the list is chosen for the new P.

The first two tests to determine whether the XZ and YZ planes correspond to separating planes between P and Q. They are very easy to perform. It involves merely checking the bounding boxes of the two polyhedra in the X and Y planes. The third, fourth and fifth tests, however, present more of a challenge.

The main thrust of the third and fourth tests is to find a separating plane between P and Q. If such a plane exists, then P can safely be considered to lie behind Q.

To simplify the third and fourth tests, we can mark each face of every polyhedron as being either a front-facing



polygon (it faces the eye) or a back-facing polygon. This is easily determined because the algorithm stores an outward pointing normal for each face. Therefore, a simple query as to the sign of the Z component of a face's normal is enough to determine whether the face is front facing or not. A positive Z, in a right-handed coordinate system, is front facing. Otherwise it is back-facing. This pre-processing is all performed while reading in the meshed topology.

The third test then simplifies to testing whether all of P's vertices lie behind a plane defined by any one of Q's back-facing polygons. If this is true, then the face under consideration forms a separating plane between P and Q and therefore we can conclude that P is behind Q. Performing this test is a matter of making sure that for at least one back-facing polygon of Q, the sign of  $f(x_j, y_j, z_j)$  for all vertices  $j$  in P is non-negative for that particular face of Q. The plane equation,  $f$ , is based on the outward pointing normals for that face. If this test fails, then the algorithm will proceed to the fourth test and try to determine whether the plane specified by a front-facing polygon belonging to P separates P from Q.

This fourth test is very similar to the third test. In determining whether Q lies entirely in front of P, one must make sure that for at least one front-facing polygon of P,  $f(x_j, y_j, z_j)$  is positive for all vertices  $j$  in polyhedron Q. This time,  $f$  is the plane equation for a front-facing polygon of P, again based on outward pointing normals. If this test passes, then Q lies entirely in front of at least one of the front-facing polygons of P and it can be concluded that P lies behind Q.

The fifth test, `EdgeIntersection()`, returns either the number of the polyhedra which is in front, or an error condition if it cannot detect any intersecting edges. The two cases where this test can fail are shown in Figure 5. As we will see, this does not jeopardize the correctness of our algorithm.

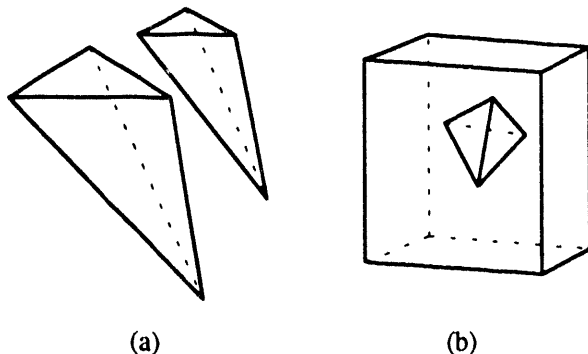


Figure 5.

The illustrations (a) and (b) in Figure 5, which both represent screen projections, both fail the `EdgeIntersection()` function because neither have intersecting edges in their projections. However, in case (a) the order in which the two tetrahedra are rendered makes no difference since they are completely disjoint in the screen projection and therefore an error condition can correctly be treated as if polyhedron P were in front of polyhedron Q. On the other hand, this is not necessarily the situation in case (b). We can rest assured that this will never cause a sorting glitch because the back face of the brick (assuming the tetrahedron is behind the brick) is a back-facing separating plane and would have been caught in the third or fourth test. Thus, if the fifth test reports an error, the algorithm always correctly assumes that the brick is in front of the tetrahedron. This fifth test is a more efficient alternative to the linear programming method proposed by Newell [6]. If the fifth test fails, then polygon Q should be moved to the front of the list and whole process should be repeated.

With the exception of the fifth, these tests are very easy to calculate. When reading in the topological data-set, one must store the plane equation coefficients, with respect to an outward pointing normal, in the polyhedral database. From these pre-computed coefficients, determining which side of a face a point  $j$  lies is as simple as finding the sign of  $ax_j + by_j + cz_j + d$ .

In the case that all of the tests fail and we have a cycle, the program will render first whichever of P and Q whose  $Z_{nearest}$  is further from the eye.

### Non-planar Faces

The algorithm described works correctly for convex polyhedra with planar faces and no cycles or intersections. Unfortunately, it is quite possible, in finite element codes, for the faces to skew slightly yielding non-planar faces. Fortunately, the faces will be mostly planar because highly non-planar faces can lead to instabilities in the code. Figure 6 illustrates an exaggeration of what could possibly happen. Even if the face were mildly non-planar, it is still enough to cause the tests to fail. To accommodate slightly non-planar faces, we have introduced an error tolerance  $\delta$ .

In order to sort convex polyhedra with non-planar faces as shown in Figure 4, the algorithm first calculates an average outward pointing normal for each face. This is done using Newell's method as follows [8,9]:

$$a = \sum_{i=1}^n (y_i - y_j)(z_i + z_j)$$

$$b = \sum_{i=1}^n (z_i - z_j)(x_i + x_j)$$

$$c = \sum_{i=1}^n (x_i - x_j)(y_i + y_j)$$

where:  $j = (i+1) \bmod n$

and  $n$  is the number of vertices per polygon

The last coefficient of the plane equation,  $d$ , can be calculated by picking some point on the average plane. We chose the center of gravity of the face for this point as follows:

$$\frac{1}{n} \left( \sum_{i=1}^n x_i, \sum_{i=1}^n y_i, \sum_{i=1}^n z_i \right)$$

To determine on which side of a plane a point lies, an error tolerance is used. This is needed because with non-planar faces the algorithm could return vertex  $a$  of polyhedron  $Q$ , in Figure 6 below, as being contained inside of  $P$  which would ultimately result in a cycle. But that is not the case. In fact, if vertex  $a$  were actually touching a plane of polyhedron  $P$ , machine round-off might place  $a$  on the wrong side of that face which, again, would result in a cycle. Therefore, an overlapping tolerance  $\delta$ , a distance from a vertex to a plane which is deemed to be an acceptable error by the sort, should be used. In other words, the third and fourth tests should consider vertex  $a$  to be on the outside of a face (the plane equation evaluated at point  $a$  should yield a non-negative value) if point  $a$  is within  $\delta$  units away from the plane under consideration, regardless of which side of the face point  $a$  actually lies. We can rationalize the existence of this  $\delta$  tolerance as follows: if a corner of polyhedron  $Q$  happens to intersect a planar face of polyhedron  $P$  by the amount  $\delta$ , for a suitably small  $\delta$ , the visual impact will be minimal, if perceptible at all. Our implementation uses a unique  $\delta$  for each face, based on the maximum deviation of a vertex from its corresponding average plane.

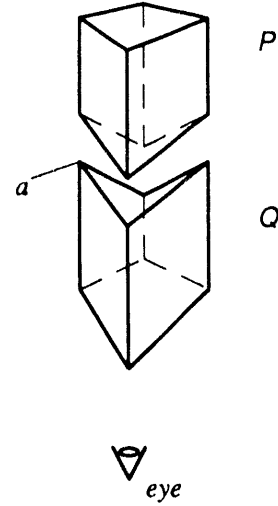


Figure 6.

## Discussion

The fine-tuning sorting process described runs in  $O(N^2)$  with respect to the number of polyhedra sorted. However, this quadratic running time is an upper bound and would only be found in the most pathological cases where all polyhedra have overlapping  $Z$  extents. The average running times for normal datasets should be lower. While the first and second tests run in constant time, and the third and fourth tests run in  $O(F_i E_j)$  and  $O(E_i F_j)$  time with respect to the number of faces and vertices, the fifth test runs in  $O(E_i E_j)$  where  $E$  corresponds to the number of edges for polyhedra  $i$  and  $j$ , respectively. Again, this is a worst case running time and it should be substantially better in practice since the function terminates once a suitable intersection in the two projections is found.

The implementation of this algorithm was coded in C++ and has been used to sort those primitives found in the SGI Explorer pyramid type. Each volume primitive is a subclass of a very general *primitive* C++ class. These subclasses are as follows: the tetrahedra, pyramid, prism, wedge and brick. We can easily extend the system to include others. With a QuickSort only sorting option which yields a faster, but not entirely correct sort, the algorithm can interactively sort thousands of elements on an SGI Indigo<sup>2</sup> workstation. With correct sorting, this algorithm slows down to a few hundred elements on the same machine.

Figure 7(e) illustrates the results of the sort, with the Williams and Max color integration, on the "blunt fin" dataset from the AVS visualization package.

This paper presents extensions to the Shirley-Tuckman algorithm for compositing our colored smoke and pyramid volumes, and also extensions to the Newell, Newell, and Sancha sort for use with unstructured data. We present no new approaches to cycle breaking. If a cycle is detected during the sorting, then the polyhedron with the vertex farthest from the eye would be removed from the list and rendered. The most common form of a cycle the algorithm would detect in a dataset would probably be two non-planar faced polyhedra "intersecting" each other. However, the  $\delta$  overlapping tolerance should eliminate most of these situations. The more traditional, but slower method for removing cycles, such as the type illustrated in Figure 4, would be to pass one or more cutting planes through the offending polyhedra.

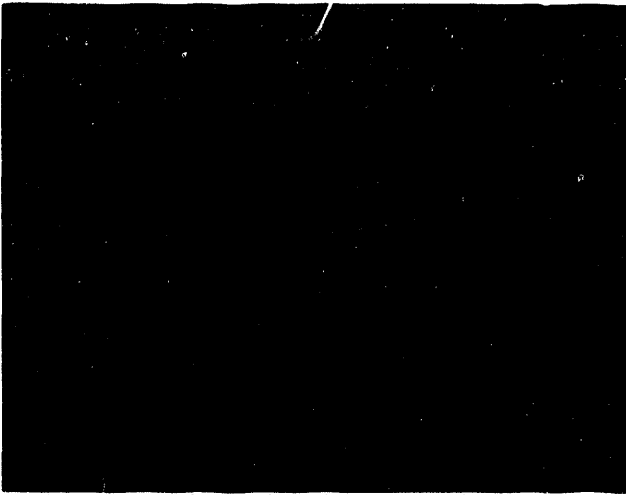
### Acknowledgments

We would like to thank Roger Crawfis for his help and suggestions. We would also like to thank the people at Silicon Graphics for their advice and help in creating our Explorer modules.

This work was performed under the auspices of the U. S. Department of Energy by Lawrence Livermore National Laboratory under contract No. W-7405-ENG-48.

### References

- [1] Shirley, P. and A. Tuckman, "A Polygonal Approach to Direct Scalar Volume Rendering", *Computer Graphics*, Vol. 24, No. 5 (November 1990), pp 63-70.
- [2] Max, N, B. Becker, and R. Crawfis, "Flow Volumes for Interactive Vector Field Visualization", *Proceedings of Visualization '93*, (October 1993), pp. 19-25.
- [3] Kirk, D. and D. Voorhies, "The Rendering Architecture of the DN10000VS", *Computer Graphics*, Vol. 24, No. 4, (August 1990), pp 299-307.
- [4] Williams, P. and N. Max, "A Volume Density Optical Model", *1992 Workshop on Volume Visualization*, Association for Computing Machinery, New York (1992) pp. 61-68.
- [5] Newell, M. E., R. G. Newell, and T. L. Sancha, "A Solution to the Hidden Surface Problem." *Proceedings of the ACM National Conference 1972*, pp. 443-450.
- [6] Newell, M. E. "The Utilization of Procedure Models in Digital Image Synthesis", Ph.D. Thesis, University of Utah, 1974 (UTEC-CSc-76-218 and NTIS AD/A 039 008/LL).
- [7] Foley, J., A. van Dam, S. Feiner, J. Hughes, *Computer Graphics Principles and Practice, 2nd Edition*, Addison-Wesley, Reading, Massachusetts, 1990.
- [8] Rogers, David F., *Procedural Elements for Computer Graphics*, McGraw-Hill, New York. 1985.
- [9] Sutherland, I. E., R. F. Sproull, and R. A. Schumaker, "A Characterization of Ten Hidden-Surface Algorithms", *Computing Surveys*, Vol. 6, 1974, pp. 1-55.
- [10] Max, N., P. Hanrahan, and R. Crawfis, "Area and Volume Coherence for Efficient Visualization of 3-D Scalar Functions", *Computer Graphics*, Vol. 24, No. 5 (November 1990), pp. 27-33.
- [11] Williams, P. "Visibility Ordering of Meshed Polyhedra", *ACM Transactions on Graphics*, Vol. 11, No. 2, (April 1992), pp.103-126.



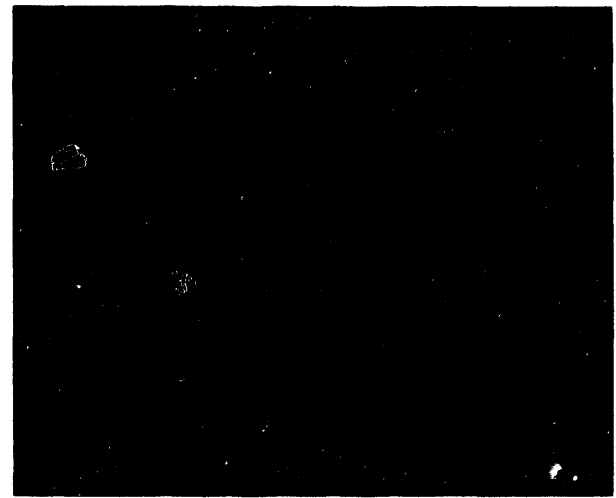
7a. Integration using Average color.



7b. Williams' color integration.



7c. No texture mapping.



7d. With texture mapping.



7e. Blunt fin with 440 sorted brick elements, using texture mapping.

**DATE**  
**FILMED**

9 / 7 / 94

**END**