

LA-UR-11-10225

Approved for public release; distribution is unlimited.

Title: RF Design and Operating Results for a New 201.25 MHz RF Power Amplifier for LANSCE

Author(s): Lyles, John T.
Baca, David M.
Bratton, Ray E.
Brennan, Nicholas W.
Bultman, Nathan K.
Chen, Zukun
Davis, Jerry L.
Naranjo, Angela C.
Rees, Daniel E.
Sandoval, Gilbert M. Jr.
Summers, Richard D.

Intended for: 2011 Particle Accelerator Conference, 2011-03-28/2011-04-01 (New York, New York, United States)



Disclaimer:

Los Alamos National Laboratory, an affirmative action/equal opportunity employer, is operated by the Los Alamos National Security, LLC for the National Nuclear Security Administration of the U.S. Department of Energy under contract DE-AC52-06NA25396. By acceptance of this article, the publisher recognizes that the U.S. Government retains nonexclusive, royalty-free license to publish or reproduce the published form of this contribution, or to allow others to do so, for U.S. Government purposes. Los Alamos National Laboratory requests that the publisher identify this article as work performed under the auspices of the U.S. Department of Energy. Los Alamos National Laboratory strongly supports academic freedom and a researcher's right to publish; as an institution, however, the Laboratory does not endorse the viewpoint of a publication or guarantee its technical correctness.

RF DESIGN AND OPERATING RESULTS FOR A NEW 201.25 MHZ RF POWER AMPLIFIER FOR LANSCE*

J. Lyles[#], N. Bultman, Z. Chen, J. Davis, A. Naranjo, D. Rees, G. Sandoval,
AOT Division, Los Alamos National Laboratory, Los Alamos, NM
D. Baca, R. Bratton, R. Summers, Compa Industries, Los Alamos, NM USA
N. Brennan, Texas A&M University, College Station, Texas

Abstract

A prototype VHF RF Final Power Amplifier (FPA) for Los Alamos Neutron Science Center (LANSCE) has been designed, fabricated, and tested. The cavity amplifier has met the goals of generating 2.5 MW **peak and 260 kW** of average power, at an elevation of 2.1 km. It was designed to use a Thales TH628 Diacode[®], a state-of-art tetrode power tube that is double-ended, providing roughly twice the power of a conventional tetrode. The amplifier is designed with tunable input and output transmission line cavity circuits, a grid decoupling circuit, an adjustable output coupler, TE mode suppressors, blocking, bypassing and decoupling capacitors, and a cooling system. The tube is connected in a full wavelength output circuit, with the lower main tuner situated $\frac{3}{4}\lambda$ from the central electron beam region in the tube and the upper slave tuner $\frac{1}{4}\lambda$ from the same point. We summarize the design processes and features of the FPA along with significant test results. A pair of production amplifiers are planned to be power-combined and installed at the LANSCE DTL to return operation to full beam duty factor.

DTL RF SYSTEM

The LANSCE proton linac uses an Alvarez DTL powered at 201.25 MHz to accelerate both H⁺ and H⁻ beams from 0.75 to 100 MeV in four tanks, for injection into a 805 MHz coupled-cavity linac to reach 800 MeV. High peak RF power (~ 3.2 MW) along with significant average power (400 KW) is needed from the DTL RF system. We are replacing the old intermediate power amplifier and FPA stages with modern circuits using new power tubes having higher average power capability[1]. The goal is to reduce the number of power tubes in use from 24 to 10, with only two unique types remaining in service versus 5 at present. Elimination of the power-consuming series anode modulator for each FPA reduces system complexity, operating costs and downtime. Higher anode dissipation capability in the new FPA tubes will reduce the frequency of tube failures, increasing beam availability, while allowing for additional beam loading at LANSCE. A pair of new FPAs of this design will be power-combined for the three high power

DTL tanks resulting in significant headroom for both peak and average power over existing 200 MHz systems.

This paper addresses electrical design features and test results for the prototype FPA. Mechanical design of the FPA, and design of the test facility, supporting electronics and IPA are discussed in these proceedings and elsewhere[2][3][4].

FINAL POWER AMPLIFIER

The advantages of using the TH628 Diacode[®], a double-ended tetrode, for high power at very high frequencies have been explained previously[5][6]. Design aspects of a cold-model amplifier were published[7][8]. Development and fabrication of the revised configuration of this amplifier has been the present effort, with a goal to produce up to 2.5 MW peak power at 13% duty factor without pressurization. The final version of the amplifier has a revised output circuit and has provisions for cooling and DC bias connections for the tube electrodes. The TH628 has two ~ 12 cm wide ceramic seal rings between anode and screen grid (g2) contact rings on both upper and lower portions. The amplifier is configured common-grid with a full wavelength double-ended output circuit. All of the input circuitry is single-ended, connecting only to the bottom of the tube. This includes the heater/cathode contacts and the control grid contacts. The output circuit is double-ended, connecting to both upper and lower ends of the tube at the anode and g2 contacts.

Input Circuit

A tuned input circuit applies RF voltage across the cathode to control grid (g1) in the TH628, and is constructed from concentric copper cylinders that are silver-plated. The outer cathode conductor is grounded at the bottom while an isolated inner pipe carries both 1000 amperes DC for filament power and substantial cooling air (fig. 1). RF bypassing for the filament is made with a fluorinated ethylene propylene (FEP) thermoplastic film dielectric between pressed cylinders, contacting the concentric filament conductors near the TH628 contacts. The grid transmission-line circuits have brazed flanges at the lower supporting surface. The inner diameter of the g1 cylinder carries RF current of the input circuit, along with the outer diameter of the cathode conductor, with a line impedance of 46.1Ω . The outer cathode contact ring of the TH628 contacts the upper end of the input resonator.

* Work supported by the United States Department of Energy, National Nuclear Security Agency, under contract DE-AC52-06NA25396
jtml@lanl.gov

Inside the TH628, a conductor from the upper edge of g1 folds back through the center of the tube to extend at a contact button on the bottom. This point is a high impedance at the end of the resonator, capacitively loaded by the structure and g1-cathode electrode spacing inside the tube. At the lower end a movable tuning plane contacts between the cathode conductor and the inner diameter of the g1 cylinder. With this adjustable short, a standing wave voltage anti-node is placed at the vertical center of the cathode-g1 region inside the TH628 for highest performance. Superfish was used for the initial design dimensions, followed by a Fortran transmission line code to locate the point of input coupling. The actual physical dimensions tuned lower than expected from the calculations. This variation was attributed to porosity of the cathode mesh and pyrolytic graphite grid

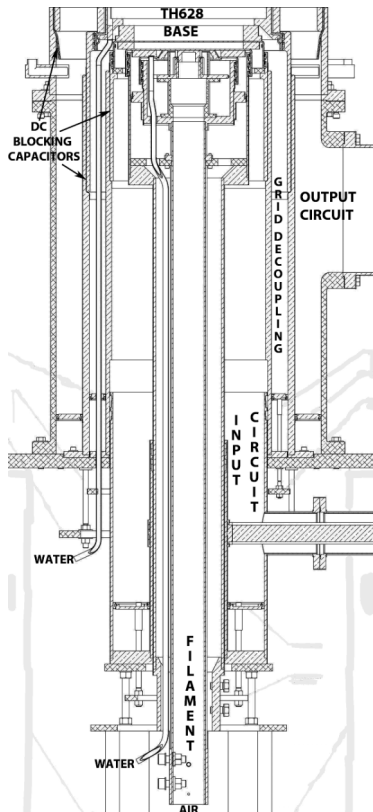


Figure 1. Cross section diagram of lower circuits, output coupling plate not shown

conductor as well as intricacies of the internal tube dimensions. A correction factor was applied and modifications made to center the input tuning range.

A 7.9 cm diameter coaxial feeder applies drive power directly to the cathode line through a quarter-wave transformer in the input feeder. The outer diameter of the g1 cylinder is tuned with another movable tuning plane to place a RF voltage node between g1 and g2 at the active region inside the TH628. Actually this voltage is made nonzero (detuned) to neutralize feedthrough voltages from the inter-electrode capacitances. Water-cooling for g2 connections and DC bias for both grids is carried through

this same g1-g2 decoupling resonator space, removing them from the high power circuits.

The upper end of the g1 cylinder is actually made from two parts pressed together with FEP film dielectric between them, as described in the mechanical design report. This design makes a high quality DC blocking capacitor, measuring 5.5 nF. It carries RF current with negligible RF voltage drop as a portion of the transmission line circuit. The DC bias is applied to only the upper edge where it contacts the outer g1 connection of the TH628. This allows application of negative grid bias voltage for both conduction and cutoff conditions at the pulse rate of the RF system. It provides power savings by stopping the electron beam between pulses. The switching function is provided by an IGBT-based bi-level pulser, described in the test facility report.

Output Circuit

The g2 line is the inner conductor for the lower output circuit, where circulating current reaches 2100 A/m at full design power near the TH628 connector ring. A 48.2 cm ID outer cylinder has been chosen for tuning range using another movable tuning plane, while allowing capacitive coupling of the output power into a 22.8 cm diameter 50Ω coaxial feeder. The resonator line Z is 13.4Ω. Superfish and Fortran codes were both used to analyze and optimize the geometry. Unlike the input circuit, the physical dimensions were quite close to the calculations for the output circuit. The end result is that the 201 MHz radial E-fields are lower at the ceramic seals of the TH628 and high at the output coupling capacitor (~650 kV/m). The screen grid DC bias is 1600 VDC continuous, applied to the upper cylinder of a DC blocking capacitor made exactly the same as the g1 capacitor. The capacitance of this assembly is 7.59 nF, and it passes the circulating RF current of the output circuit.

As mentioned earlier, the output circuit is a full wavelength long. Both ends are terminated in short circuits so the vertical center of the TH628 output interelectrode space is placed $3\lambda/4$ distance from the lower tuner and $\lambda/4$ from the upper slave circuit tuner. Like the input circuit, it forces a standing wave voltage anti-node at the center of the active region inside the tube, for the Diacode® principle. The lower output circuit outer conductor was made from aluminum; consequently, 25 μm of silver plating was applied to the interior surfaces for excellent RF conductivity.

A separate collar is fastened to the upper flange of the lower output circuit. This piece contains an integral B+ HV blocking capacitor of 1.2 nF, made from two layers of 1.5mm thick FEP pressed like the two grid DC blocking capacitors. The top ring of this part connects to the anode contact ring through spring fingers, and allows air to exhaust from the cavity across the ceramic seal. At the top of the TH628 a short $\lambda/4$ slave output circuit is constructed with a blocking capacitor made from Kapton® polyimide film and a water-cooled tuning plane. The

design of this piece will be simplified and constructed using FEP similar to the lower blocking capacitor.

Five reduced-height waveguide mode dampers have been mounted around the circumference of the slave output circuit, adjacent to the TH628 upper ceramic seals. The main tuning plane at the lower end of the output circuit has three slots with similar reduced-height waveguide dampers. Both upper and lower suppressors contain blocks of Eccosorb® MF124, with high magnetic loss factor and μ of 5 at 1 GHz. The only observed HOM was an intermittent TE₃₁ circumferential mode at 1.28 GHz, typical of large diameter gridded tubes. The waveguide dimensions were selected to be operating significantly below cutoff for 200 MHz, with preferential absorption of energy in the UHF region and above. A small amount of air cooling was channeled through the waveguides, by making slots or gaps in the absorber material. This effectively suppressed the mode.

The output power coupler is a copper capacitor plate adjacent to the high E-field region near the vertical center of the g2 conductor. It extends from the center conductor of the output feeder through a copper bellows. Mechanical extension of the the center conductor to the plate allows adjustment of coupling to the resonator. This varies the transformation from the 50 Ω feeder to the plate resistance of the TH628 to optimize the efficiency and gain over a wide range of power. It can be adjusted while operating at full power, as the mechanism is introduced through a grounded quarter-wave stub as part of the output feeder. The stub also provides second harmonic suppression in the output of the FPA. Additional components are designed to provide a safety enclosure/RF shield around the TH628, support a B+ voltage feedthrough/RF bypass capacitor, provide air cooling ports and extend the water cooling hoses to minimize HV leakage. Figure 2 shows the upper components surrounding the Diacrode® tube.

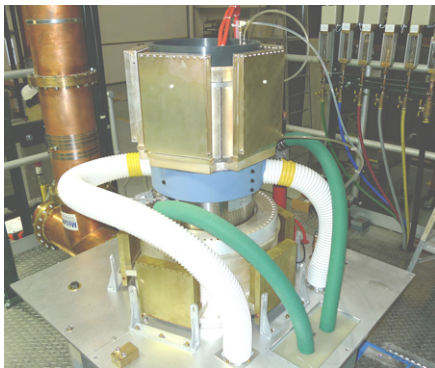


Fig 2. Slave output circuit, upper HOM dampers, air and water hoses. Safety enclosure removed for photograph.

TEST RESULTS

Testing began in October of 2010, after the ancillary systems had been completed and tested. Initial testing began at very low duty factor, 15 pulses per second of 200 μ s length. 1.5 MW of peak power was reached quickly. It

was determined that the input circuit tuning was offset on the low side of the desired range and that the initial designed lower HOM dampers were ineffective. Successful design modifications were completed in mid-January. Further testing revealed arcing in an RF carrying joint in the lower anode blocking capacitor assembly. Additional corrective work was done to alleviate this problem. In March, significant test progress was made as shown in table 1:

Table 1. Summary of significant test results

Ea (kV)	Ia (A)	Eg2 (kV)	Ig2 (A)	Eg1 (V)	Ig1 (A)	Pin (kW)	Pout (MW)
300μS 15pps							
23	130	1.4	3.5	-310	4.5	72	2
26	125	1.44	2.73	-334	4	69	2.2
26	133	1.5	3	-350	4.2	78	2.31
27	139	1.6	3.2	-350	4.4	85	2.5

800 μ S 60pps

23.8 104 1.5 2.8 -357 3.1 50 1.7
The power gain and power-added efficiency of the high duty factor results are 15.3 dB and 67%.

CONCLUSION

A new generation of VHF power amplifiers has been developed for the DTL at LANSCE to continue operating as a leading high power proton linac. Significant collaboration between the AOT-Division radio-frequency and mechanical groups, and Thales Electron Tubes contributed to the success of this endeavor.

REFERENCES

- [1] J. Lyles. C. Friedrichs, et al, "New High Power 200 MHz RF System for the LANSCE Drift Tube Linac", LINAC'98, Chicago, August, 1998, pp. 228-230.
- [2] Z. Chen, D. Baca, et al., "Mechanical Design and Fabrication of a New RF power Amplifier for LANSCE", PAC'11, New York, March 2011.
- [3] J. Lyles, S. Archuletta, et al., "New High power Test Facility for VHF Power Amplifiers at LANSCE", PAC'11, New York, March 2011.
- [4] J. Lyles, S. Archuletta, et al., "Test Results for the 201.25 MHz Tetrode Power Amplifier at LANSCE", EPAC'04, Lucerne, Switzerland, July 5-9, 2004, pp. 1078-80.
- [5] G. Clerc, J.P. Ichac, C. Robert, "A New Generation of Gridded Tubes for Higher Power and Higher Frequencies", PAC'97, Vancouver, 1997, pp. 2899-2901.
- [6] J. Lyles. D. Clark, J. Davis et al., "Progress on the New 200 MHz RF System for the LANSCE DTL", PAC'01, New York, April, 2001, pp. 996-998.
- [7] J. Lyles. D. Clark, J. Davis et al., *ibid*.
- [8] J. Lyles. S. Archuletta, et al., "A New 201.25 MHz High Power RF System for the LANSCE DTL", EPAC'02, Paris, June, 2002, pp. 2329-2331.