


# MicroReview

## Shedding light on a Group IV (ECF11) alternative $\sigma$ factor

Timothy J. Donohue  \*

Bacteriology Department, Great Lakes Bioenergy Research Center, Wisconsin Energy Institute, University of Wisconsin-Madison, Madison, WI 53726, USA.

### Summary

This year marks the 50<sup>th</sup> anniversary of the discovery of  $\sigma^{70}$  as a protein factor that was needed for bacterial RNA polymerase to accurately transcribe a promoter *in vitro*. It was 25 years later that the Group IV alternative  $\sigma$ s were described as a distinct family of proteins related to  $\sigma^{70}$ . In the intervening time, there has been an ever-growing list of Group IV  $\sigma$ s, numbers of genes they transcribe, insight into the diverse suite of processes they control, and appreciation for their impact on bacterial lifestyles. This work summarizes knowledge of the *Rhodobacter sphaeroides*  $\sigma^E$ -ChrR pair, a member of the ECF11 subfamily of Group IV alternative  $\sigma$ s, in protecting cells from the reactive oxygen species, singlet oxygen. It describes lessons learned from analyzing ChrR, a zinc-dependent anti- $\sigma$  factor, that are generally applicable to Group IV  $\sigma$ s and relevant to the response to single oxygen. This MicroReview also illustrates insights into stress responses in this and other bacteria that have been acquired by analyzing or modeling the activity of the  $\sigma^E$ -ChrR across the bacterial phylogeny.

### Introduction

The study of Group IV or extracytoplasmic function (ECF)  $\sigma$  factor function has provided many new insights into the cell biology, stress responses and signaling pathways across the bacterial phylogeny (Staron *et al.*, 2009; Feklistov *et al.*, 2014), and provided strategies to allow for targeted control of gene expression in native

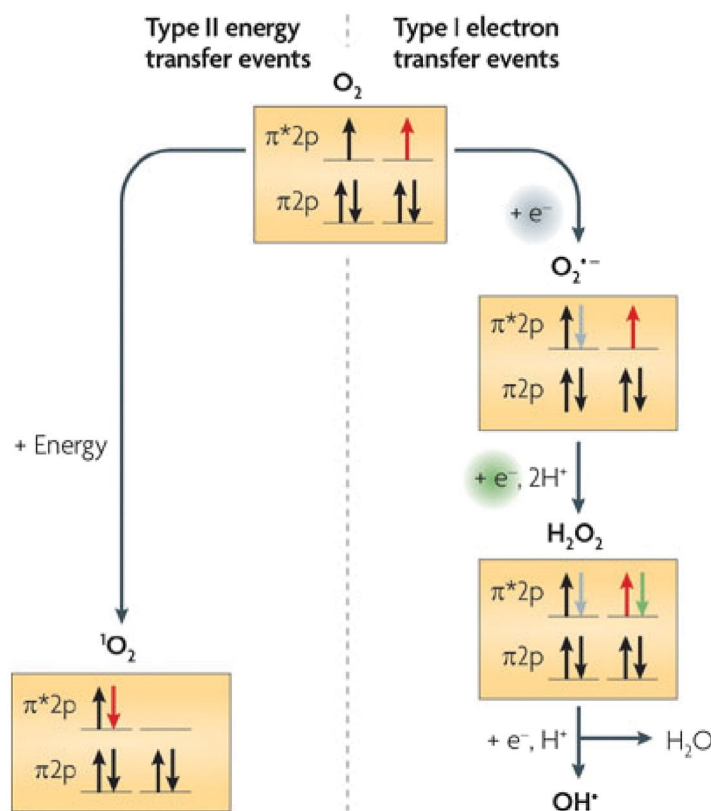
and heterologous hosts (Rhodius *et al.*, 2013; Pinto *et al.*, 2019). This contribution will review what is known about the ECF11 sub-family of Group IV  $\sigma$ s (Staron *et al.*, 2009). It will focus on the founding member of the ECF11 sub-family, the *Rhodobacter sphaeroides*  $\sigma^E$  protein, its cognate cytoplasmic anti- $\sigma$  ChrR (Newman *et al.*, 1999; 2001), and their role in a stress response to singlet oxygen, a reactive oxygen species (ROS) encountered by a variety of cells (Anthony *et al.*, 2005; Ziegelhoffer and Donohue, 2009). It will summarize lessons learned about Group IV  $\sigma$  factor function by studying this system, and highlight unanswered questions about this response.

### Singlet oxygen ( $^1O_2$ ) is a ROS

Prior to the introduction of molecular oxygen ( $O_2$ ), organisms had a limited metabolic and regulatory repertoire. However, when photosynthetic cells acquired the ability to produce  $O_2$ , they altered the Earth's atmosphere and influenced the forms of life that inhabited the planet (Raymond *et al.*, 2003; Kerr, 2005). In particular, the accumulation of atmospheric  $O_2$  allowed evolution of pathways like aerobic respiration that couple the four-electron reduction of  $O_2$  to formation of a proton gradient (Kerr, 2005). One advantage to aerobic respiration is the large amount of energy that is conserved as  $O_2$  is reduced to water (Gennis, 1986; Brzezinski and Gennis, 2008; Borisov *et al.*, 2011; Bueno *et al.*, 2012; Soo *et al.*, 2019). However, there are other, potentially deleterious, consequences to life in the presence of  $O_2$ . One trade off to accumulation of atmospheric  $O_2$ , or its use as a terminal electron acceptor, is formation of different ROS (Rosner and Storz, 1997; Schulz *et al.*, 2000; Mittler *et al.*, 2004; Frick *et al.*, 2015; Taverne *et al.*, 2018).

When one electron is sequentially transferred to  $O_2$  (Fig. 1), Type I ROS (superoxide, hydrogen peroxide, or hydroxyl radicals) are formed (Rosner and Storz, 1997). Each Type I ROS can damage biomolecules, kill cells or trigger the onset of debilitating diseases (Schulz *et al.*, 2000; Taverne *et al.*, 2018). Consequently, considerable effort has been invested into determining the stress response(s) to these ROS (Rosner and Storz, 1997;

Accepted 15 May, 2019. \*For correspondence. E-mail: tdonohue@bact.wisc.edu; Tel. +1 608 262 4663; Fax 6088902270.



**Fig. 1.** Formation and biological consequences of ROS generation. The right panel shows production of the ROS superoxide ( $\text{O}_2^{\cdot-}$ ), hydrogen peroxide ( $\text{H}_2\text{O}_2$ ) or hydroxyl radicals ( $\text{OH}^{\cdot}$ ) by one-electron transfer reactions. The left panel shows formation of singlet oxygen ( $^1\text{O}_2$ ) by Type II energy transfer, typically from an excited, triplet state donor, to  $\text{O}_2$ . The diagrams show the spin of electrons in shells of the outer  $p$  orbital of each compound. Note that  $^1\text{O}_2$  is formed by movement of an electron between outer  $p$  orbital shells (red arrow). Figure modified from (Ziegelhoffer and Donohue, 2009).

Schulz *et al.*, 2000; Zheng and Storz, 2000; Kiley and Storz, 2004; Taverne *et al.*, 2018).

In contrast, less is known about how cells respond to the Type II ROS  $^1\text{O}_2$  (Ragàs *et al.*, 2013; Dogra *et al.*, 2018).  $^1\text{O}_2$  is formed when energy transfer from an excited, triplet state donor, to  $\text{O}_2$  alters the distribution of electrons in its outer orbital (Fig. 1). Enzymes which detoxify superoxide or  $\text{H}_2\text{O}_2$  are ineffective against  $^1\text{O}_2$  due to differences in outer orbital electron organization between these Type 1 and Type II ROS (Ziegelhoffer and Donohue, 2009). Indeed, there are no known enzyme-catalyzed systems for  $^1\text{O}_2$  detoxification (Davies, 2004).

The outer orbital electron organization of  $^1\text{O}_2$  makes it a strong oxidant (~900mV energy difference between  $^1\text{O}_2$  and  $\text{O}_2$ ).  $^1\text{O}_2$  is known or predicted to peroxidize and eventually cleave unsaturated bonds in olefins, oxidize amino acid side chains or nucleic acid bases and cleave peptide or phosphodiester bonds (Nymann and Hynninen, 2004; Godley *et al.*, 2005). Thus, it is not surprising that  $^1\text{O}_2$  can also inhibit growth or kill cells (Anthony *et al.*, 2005; Ziegelhoffer and Donohue, 2009; Lemke *et al.*, 2014).

#### Biological formation of $^1\text{O}_2$

Major cellular sources of  $^1\text{O}_2$  include the enzymes NADH oxidase, myeloperoxidase or chloroperoxidase (Kochevar, 2004; Davies, 2004; Godley *et al.*, 2005). Light energy capture by photosynthetic pigments is another significant source of  $^1\text{O}_2$  (Fig. 1). In the light reactions of photosynthesis, photons excite chlorophyll pigments to a high-energy state (Cogdell, 2000; Frank and Brudvig, 2004; Kochevar, 2004; Triantaphylides and Havaux, 2009). Normally, these excited (triplet state) pigments transfer energy to a reaction center (in bacteria) or photosystem (in cyanobacteria, algae and plants) resulting in light-driven oxidation of this membrane enzyme. However, at a significant frequency, energy transfer from light-excited photopigments to  $\text{O}_2$  generates  $^1\text{O}_2$  (Cogdell, 2000; Frank and Brudvig, 2004; Kochevar, 2004; Uchoa *et al.*, 2008; Triantaphylides and Havaux, 2009).

$^1\text{O}_2$  has a high reactivity, so it is predicted to have a short cellular half-life (~100 ns), not travel far its site of synthesis, and produce localized damage (Kochevar, 2004). In

phototrophs,  $^1\text{O}_2$  formation initiates a process called photo-oxidative stress (Triantaphylides and Havaux, 2009; Ziegelhoffer and Donohue, 2009) that can inactivate integral photosynthetic membrane enzymes (Cogdell, 2000; Fryer *et al.*, 2002; Frank and Brudvig, 2004; Kochevar, 2004; Szabó *et al.*, 2005), peroxidize or cleave nearby olefins (carotenoids or unsaturated fatty acids), destroy bilayer integrity and function (Girotti and Kriska, 2004; Ramel *et al.*, 2012; Lemke *et al.*, 2014), signal changes in nuclear gene expression from the organelle (chloroplasts) where it is generated in eukaryotic phototrophs or trigger apoptosis (Danon *et al.*, 2005; Foyer and Noctor, 2005).

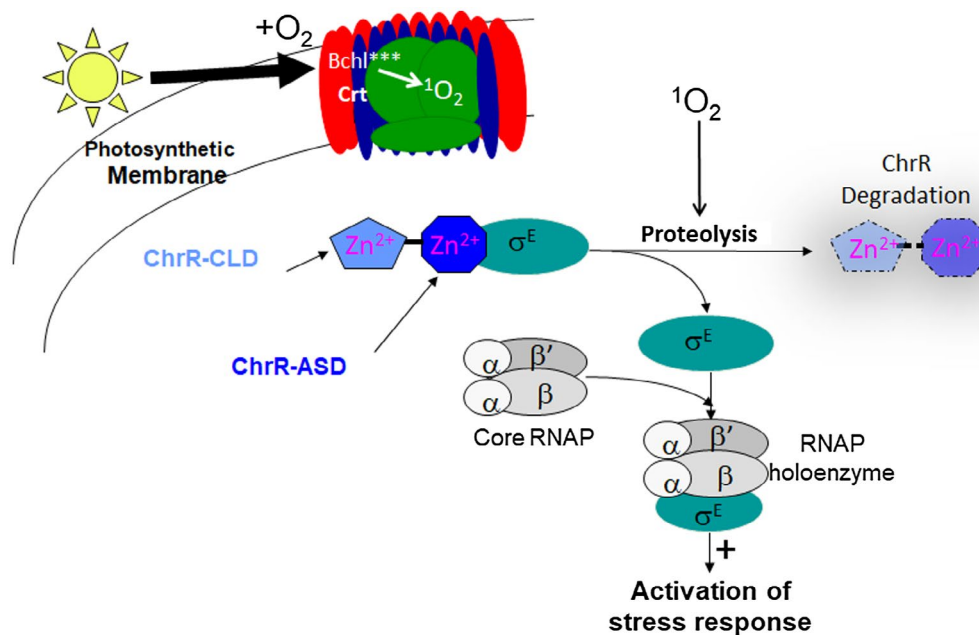
### $^1\text{O}_2$ promotes a bacterial transcriptional response

We uncovered a role for an ECF11 Group IV  $\sigma$  factor in a  $^1\text{O}_2$  stress response by studying the photosynthetic bacterium *Rb. sphaeroides* (Anthony *et al.*, 2005; Dufour *et al.*, 2008; Ziegelhoffer and Donohue, 2009; Nam *et al.*, 2013). In the laboratory, photosynthetic growth of *Rb. sphaeroides* is often achieved by incubating cells anaerobically in the light (Tavano and Donohue, 2006; Donohue and Kiley, 2011), so  $^1\text{O}_2$  is not formed under these conditions. However, we discovered that *Rb. sphaeroides* mounts a transcriptional response to  $^1\text{O}_2$  either when pigmented cells are exposed to light and  $\text{O}_2$  or when non-pigmented cells are exposed to the photosensitizer methylene blue, light and  $\text{O}_2$  (Anthony *et al.*,

2005), two conditions that are well known to produce this ROS (Fig. 2). The master regulator of this transcriptional response to  $^1\text{O}_2$  in *Rb. sphaeroides* is the Group IV  $\sigma$  factor,  $\sigma^E$  (Anthony *et al.*, 2005; Campbell *et al.*, 2007; Greenwell *et al.*, 2011).

In many cells, the ability of carotenoids to quench  $^1\text{O}_2$  is generally accepted to be a major route of detoxification of this ROS (Cogdell, 2000; Frank and Brudvig, 2004; Kochevar, 2004). However, quenching by carotenoids must not provide complete protection against  $^1\text{O}_2$  since this ROS can inactivate proteins, and oxidize membrane fatty acids and other olefins (Rinalducci *et al.*, 2004; Kochevar, 2004; Nishiyama *et al.*, 2004; Estevam *et al.*, 2004; Ramel *et al.*, 2012; Lemke *et al.*, 2014). In addition,  $^1\text{O}_2$  formation kills *Rb. sphaeroides*  $\Delta\sigma^E$  cells, demonstrating the essential role of the  $\sigma^E$ -dependent transcriptional response to this ROS (Anthony *et al.*, 2005).

The *Rb. sphaeroides*  $\sigma^E$ -dependent pathway is not activated by superoxide,  $\text{H}_2\text{O}_2$  or hydroxyl radicals (Anthony *et al.*, 2005; Greenwell *et al.*, 2011). However, we and others found that the organohydroperoxide *tert*-butylhydroperoxide (*t*-BOOH) increases *Rb. sphaeroides*  $\sigma^E$  activity (Lourenco and Gomes, 2009; Greenwell *et al.*, 2011; Nam *et al.*, 2013). Based on studies with model compounds,  $^1\text{O}_2$  oxidation of biomolecules could form organohydroperoxides in the membrane (Stief, 2003; Davies, 2004; Kochevar, 2004; Watabe *et al.*, 2007; Triantaphylides and Havaux, 2009). Thus, activation of the *Rb. sphaeroides*



**Fig. 2.** Model for activation of the *Rb. sphaeroides*  $\sigma^E$ -dependent  $^1\text{O}_2$  stress response. *Top* Depicts formation of  $^1\text{O}_2$  during light-driven energy transfer from excited pigments (Bchl<sup>\*\*\*</sup>) of the photosynthetic membrane to  $\text{O}_2$ . *Middle* Depicts the ability of  $^1\text{O}_2$  to somehow (signal unknown) promote ChrR degradation, releasing the Group IV sigma factor  $\sigma^E$ , so it binds RNA polymerase (RNAP) and directly activates transcription of genes in the resulting stress response. ChrR is color-coded to denote interactions between its N-terminal ASD domain with  $\sigma^E$  and the C-terminal ChrR-CLD (see text).

$\sigma^E$  pathway by either  $^1O_2$  or *t*-BOOH could reflect signal correlation, an evolutionary adaptation that allows cells to mount a response to two membrane-localized signals ( $^1O_2$  and organohydroperoxides) that are often found together in nature (Dufour *et al.*, 2010; 2012; Dufour and Donohue, 2012). Several candidate enzymes that could detoxify *t*-BOOH or its oxidation products are part of the *Rb. sphaeroides*  $\sigma^E$ -dependent stress response (Dufour *et al.*, 2012; Dufour and Donohue, 2012).

#### *ChrR* is a negative regulator of *Rb. sphaeroides* $\sigma^E$ activity

Group IV  $\sigma$ s typically bind to a cognate anti- $\sigma$  factor that is co-transcribed with the  $\sigma$  factor structural gene (Staron *et al.*, 2009). *Rb. sphaeroides*  $\sigma^E$  follows this paradigm since *ChrR*, its cognate anti- $\sigma$ , which forms a complex with  $\sigma^E$  that prevents it transcribing target genes (Newman, 2001; Newman *et al.*, 2001; Anthony *et al.*, 2004; Campbell *et al.*, 2007), is encoded by the *rpoEchrR* operon (Newman *et al.*, 1999). However, unlike many other Group IV anti- $\sigma$  factors, which are integral membrane proteins (Staron *et al.*, 2009), *Rb. sphaeroides* *ChrR* is a cytoplasmic protein (Newman *et al.*, 2001; Anthony *et al.*, 2003; 2004; Campbell *et al.*, 2007). Indeed, *Rb. sphaeroides* *ChrR* was the founding member of the ECF11 family of Group IV anti- $\sigma$ s (Staron *et al.*, 2009).

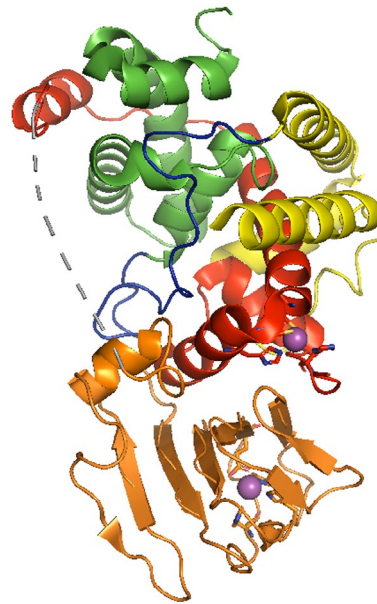
#### How *ChrR* blocks $\sigma^E$ activity

Key insights into the ECF11 family came from solving the three-dimensional structure of the *Rb. Sphaeroides*  $\sigma^E$ -*ChrR* complex (in collaboration with the Darst lab) (Campbell *et al.*, 2007). In the  $\sigma^E$ -*ChrR* complex, the *Rb. sphaeroides*  $\sigma^E$  fold is similar to that of other  $\sigma$ s, including *Escherichia coli*  $\sigma^{70}$  and  $\sigma^E$  (Campbell *et al.*, 2002; 2003), consisting of two  $\alpha$ -helical domains ( $\sigma$  regions 2 and 4) connected by a short domain 2-4 linker (Fig. 3).

In this structure, *ChrR* contains two major structural elements that were connected by a flexible linker. The *ChrR* N-terminal domain makes extensive contacts with those  $\sigma^E$  regions predicted to bind RNA polymerase and promoter DNA (Fig. 3), so this part of *ChrR* was called the anti-sigma domain (*ChrR*-ASD) to denote how it could block  $\sigma$  factor function.

#### Zinc binding to the *ChrR*-ASD is needed to inhibit $\sigma^E$ activity

*Rb. sphaeroides* *ChrR* and *Streptomyces coelicolor* *RsrA* were founding members of the ZAS anti- $\sigma$  proteins, a family of zinc-dependent anti-sigma factors that each bind a zinc metal in their N-terminal ASDs (Paget *et al.*, 2001a; Paget and Buttner, 2003; Bae *et al.*, 2004; Zdanowski



**Fig. 3.** Structure of the *Rb. sphaeroides*  $\sigma^E$ -*ChrR* complex. The *Rb. sphaeroides*  $\sigma^E$  protein is colored to reflect the major functional domains of sigma factors (green-region 2; blue-region 2-4 linker; yellow-region 4). *ChrR* is colored to indicate its two major structural domains (red-the 4 helical bundle that contains the N-terminal anti-sigma domain, ASD; orange-the C-terminal cupin-like domain, CLD). Note the extensive interactions of the *ChrR*-ASD with  $\sigma^E$  regions 2 and 4. The 2 zinc atoms associated with *ChrR* are shown in magenta, along with the side chains of the amino acids that ligate these metals ( $^6\text{His}$ ,  $^{31}\text{His}$ ,  $^{35}\text{Cys}$  &  $^{38}\text{Cys}$  in the *ChrR*-ASD and  $^{141}\text{His}$ ,  $^{143}\text{His}$ ,  $^{147}\text{Glu}$  and  $^{177}\text{His}$  in the *ChrR*-CLD respectively).

*et al.*, 2006). It was known that zinc binding was required for *ChrR* to inhibit  $\sigma^E$  activity (Newman *et al.*, 2001). In the  $\sigma^E$ :*ChrR* complex, zinc is tetrahedrally coordinated to amino acid side chains in the *ChrR*-ASD (Fig. 3) that were predicted to be involved in zinc binding based on studying mutant *ChrR* proteins containing single alanine substitutions at these positions (Newman *et al.*, 2001).

#### Conservation of structure and function among different Group IV anti- $\sigma$ s

The structure of the  $\sigma^E$ -*ChrR* complex contributed to developing an early model for how many anti-sigma factors could inhibit function of Group IV  $\sigma$ s (Campbell *et al.*, 2002). This model was based on the unexpected finding that the *ChrR*-ASD and the N-terminal domain of the *E. coli* anti-sigma factor *RseA* (*RseA*-ASD) both contain similar  $\alpha$ -helical bundles despite the lack of significant primary amino acid sequence similarity between these proteins (Campbell *et al.*, 2007). Each ASD contains one structurally conserved helix, helix IV, which interacts with region 2.1 of its cognate Group IV  $\sigma$  in their respective complexes (Fig. 4, right). Based on this, we proposed that many other ECF anti-sigma factors will use a region





**Fig. 4.** Structural similarity between the *Rb. sphaeroides* ChrR- & *E. coli* RseA-ASD. The left panel shows the structural similarity between helices I-III and the displacement of helix IV of the ASD of *Rb. sphaeroides* ChrR (red) and *E. coli* RseA (white). The blue sphere is the  $Zn^{2+}$  atom in the ChrR-ASD. The right panel shows that, despite this displacement of helix IV in the ASD of ChrR (red) and RseA (white), it interacts with a structurally conserved part of region 2 in the cognate Group IV sigma factors (region 2 of the *Rb. sphaeroides* and *E. coli*  $\sigma^E$  proteins are both shown in green). Figures modified from (Campbell *et al.*, 2007).

structurally related to ASD helix IV to bind region 2.1 of their cognate ECF  $\sigma$ s and block RNA polymerase binding (Campbell *et al.*, 2007).

We also made the unexpected finding that the region of structural similarity between the ChrR- and RseA-ASDs includes the ChrR zinc binding site (Fig. 4, left). The ability of both anti- $\sigma$ s to adopt a similar fold shows that either zinc-protein interactions (in ChrR) or protein-protein interactions (in RseA) can stabilize the ASD helical bundle (Campbell *et al.*, 2007).

The other structurally conserved helices in the ASD of each anti-sigma factor (helices I-III) interact with different regions of their cognate sigma factors, providing a way for each anti- $\sigma$  factor to recognize specific partner proteins (Campbell *et al.*, 2007). When these observations were combined with comparative genomics, it predicted that the ASDs of ChrR homologs, as well as many other Group IV anti- $\sigma$  factors that have lower degrees of amino acid identity and thus fall into other ECF subfamilies (Staron *et al.*, 2009), could adopt a similar fold when bound to their cognate  $\sigma$  factor (Campbell *et al.*, 2007). Subsequent structural analysis of additional complexes has revealed that, while the ASD conformation has been highly conserved among anti-sigma factors, the mechanism of inhibition of  $\sigma$  factor activity is unique for each cognate pair examined (Sineva *et al.*, 2017).

*The C-terminal domain of ChrR is needed to release  $\sigma^E$  in the presence of  $^1O_2$*

The ChrR C-terminal domain binds a 2<sup>nd</sup> zinc atom within a structural element that adopts an overall fold similar to proteins in the cupin superfamily (Khuri *et al.*, 2001), so we

called this the ChrR cupin-like domain (ChrR-CLD, Fig. 3). In structurally characterized proteins that contain a CLD, it can have enzyme activity (isomerases) or bind a ligand (Khuri *et al.*, 2001). The overall CLD fold and the residues known to bind zinc in the  $\sigma^E$ -ChrR structure are predicted to exist in many other ChrR homologs (Campbell *et al.*, 2007) and a variety of ZAS that are members of other ECF sub-families (Rajasekar *et al.*, 2016).

The ChrR-CLD had little contact with  $\sigma^E$ , leading us to propose that this region was unnecessary for formation of the  $\sigma^E$ -ChrR complex. As predicted, a truncated ChrR protein lacking the CLD (ChrR85) inhibited  $\sigma^E$  activity, but cells containing ChrR85 did not mount a transcriptional response to  $^1O_2$  (Campbell *et al.*, 2007), predicting that the ChrR-CLD is needed to activate the response. When we analyzed function of ChrR variants containing amino acid substitutions in the CLD zinc ligands, we identified side chains that are ( $^{147}Glu$  and  $^{177}His$ ) and are not ( $^{187}Cys$  and  $^{189}Cys$ ) needed for  $^1O_2$  or the organoperoxide like t-BOOH (see below) to increase  $\sigma^E$  activity (Greenwell *et al.*, 2011).

#### *$^1O_2$ stimulates ChrR turnover*

Some Group IV anti- $\sigma$  factors, including others that bind zinc, are reversibly modified by an inducing signal (Paget and Buttner, 2003; Antelmann and Hellmann, 2011). However, there is no known mechanism for reversible protein modification by  $^1O_2$  (Davies, 2004). Instead, we found that  $^1O_2$  promotes ChrR proteolysis (Nam *et al.*, 2013), releasing  $\sigma^E$  so it can bind RNA polymerase (Anthony *et al.*, 2004) and directly activate transcription (Ziegelhoffer and Donohue, 2009; Dufour *et al.*, 2010; 2012).

There is precedent for regulated proteolysis of a Group IV anti- $\sigma$  factor during a stress response, since cleavage of *E. coli* RseA is initiated by a protease cascade (including DegS and YaeL) that responds to envelope stress (Alba *et al.*, 2002). After DegS and YaeL cleavage of RseA in its membrane spanning region, housekeeping proteases complete degradation of this anti- $\sigma$ , releasing the *E. coli*  $\sigma^E$  so it can activate transcription (Chaba *et al.*, 2007). Homologs of extra-cytoplasmic proteases that cleave RseA have been reported to promote ChrR turnover *in vivo* (Nuss *et al.*, 2013). However, direct proteolytic cleavage of ChrR has yet to be reported and it is not clear how membrane- or periplasmic-localized proteases promote direct or indirect degradation of this cytoplasmic anti- $\sigma$ . Indeed, it is possible that  $^1\text{O}_2$  initiates a conformational change in ChrR that can make it protease-susceptible since this ROS can remove zinc from a synthetic peptide that contains the metal ligands and mimics the fold found in the ChrR-ASD (Chabert *et al.*, 2019). There is precedent for zinc release playing such a regulatory role in the bacterial chaperone Hsp33 and the ZAS anti- $\sigma$  factor, RsrA, that each respond to oxidative stress signals (Jakob *et al.*, 2000; Kim *et al.*, 2001; Raman *et al.*, 2001; Paget *et al.*, 2001a; 2001b; Paget and Buttner, 2003; Zdanowski *et al.*, 2006; Rajasekar *et al.*, 2016), so the precise role(s) of the ChrR-ASD zinc in the response to  $^1\text{O}_2$  is unknown.

Other proteins have been shown to be needed for ChrR turnover in the presence of  $^1\text{O}_2$  (Nam *et al.*, 2013; Nuss *et al.*, 2013). However, these proteins lack significant amino acid sequence similarity to proteases but some catalyze synthesis of an unusual furan-containing fatty acid (Lemke *et al.*, 2014).  $^1\text{O}_2$  formation promotes destruction of furan-containing fatty acids, so it has been proposed that peroxidation of membrane bound olefins can act as a second messenger to stimulate the activity of one or more proteases that initiates degradation of ChrR in response to this ROS (Lemke *et al.*, 2014).

#### *Organohydroperoxides and $^1\text{O}_2$ promote ChrR turnover by different mechanisms*

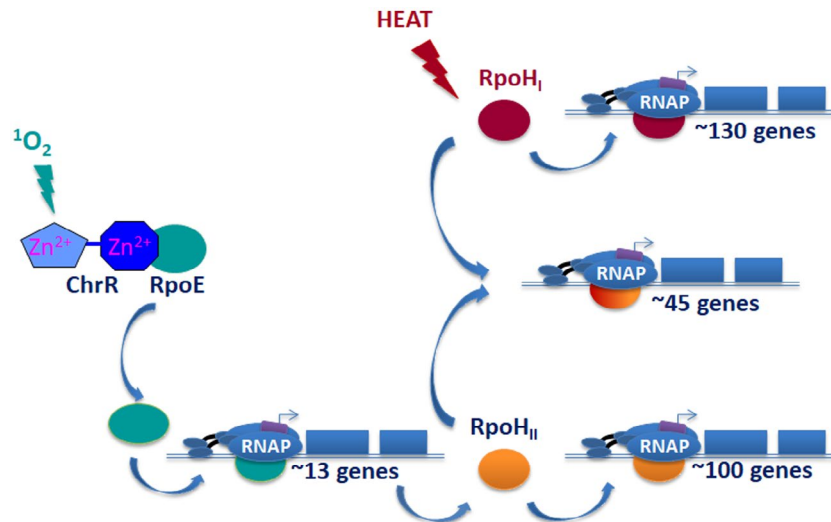
While the presence of either  $^1\text{O}_2$  or an organoperoxide like t-BOOH increases  $\sigma^E$  activity (Glaeser *et al.*, 2011; Nam *et al.*, 2013), they appear to inactivate ChrR by different mechanisms. By comparing the ability of either  $^1\text{O}_2$  or t-BOOH to increase  $\sigma^E$  activity in cells containing wild-type ChrR, a truncated ChrR85 protein, variant ChrR proteins with single amino acid changes (Greenwell *et al.*, 2011), and host mutants with defects in furan fatty acid synthesis (Nam *et al.*, 2013), one can genetically separate the effects of  $^1\text{O}_2$  and t-BOOH on  $\sigma^E$  activation. To explain this observation, it has been proposed that ChrR

inactivation in the presence of  $^1\text{O}_2$  (requires a ChrR-CLD) or t-BOOH (occurs in cells lacking an intact ChrR-CLD) do not occur by identical mechanisms (Greenwell *et al.*, 2011; Nam *et al.*, 2013).

#### *The biological response to $^1\text{O}_2$*

Identifying the members of a transcriptional regulon is often instrumental to understanding functions needed during a stress response (Guisbert *et al.*, 2008). By combining computational (phylogenetic clustering), *in vitro* (transcription assays) and *in vivo* (gene fusions, global gene expression or chromatin immunoprecipitation) analyses, we found that  $^1\text{O}_2$  activated ~160 genes (Fig. 5), with the majority of them the indirect result of this ROS activating a  $\sigma$  factor cascade that includes RpoH<sub>II</sub>, one of two *Rb. sphaeroides*  $\sigma^{32}$  homologs (Green and Donohue, 2006; Dufour *et al.*, 2008; 2012; Ziegelhoffer and Donohue, 2009). Indeed, a combination of *in vitro* and *in vivo* studies showed that < 10% of the  $^1\text{O}_2$  activated genes (~13/160 genes) were directly transcribed by  $\sigma^E$ -containing RNA polymerase (Anthony *et al.*, 2005; Green and Donohue, 2006; Dufour *et al.*, 2008; 2012; Dufour and Donohue, 2012). Others predict that a larger number of genes are part of the  $\sigma^E$ -dependent response to  $^1\text{O}_2$  (Glaeser *et al.*, 2007; Nuss *et al.*, 2009; Berghoff *et al.*, 2009), but many studies often do not distinguish direct and indirect effects of  $^1\text{O}_2$  on downstream gene expression. The direct targets of *Rb. sphaeroides*  $\sigma^E$  encode proteins that could prevent or remove damage from lipid peroxidation, enzymes that can repair mutations, electron transport metalloproteins, another alternative sigma factor RpoH<sub>II</sub> and proteins of unknown function (Anthony *et al.*, 2005; Green and Donohue, 2006; Watabe *et al.*, 2007; Dufour *et al.*, 2008; 2012; Ziegelhoffer and Donohue, 2009). The finding that *rpoH<sub>II</sub>* transcription is absolutely dependent on  $\sigma^E$  (Fig. 5) predicted that  $^1\text{O}_2$  activated a transcriptional cascade and that both  $\sigma^E$  and RpoH<sub>II</sub> have a role in this stress response (Anthony *et al.*, 2005; Green and Donohue, 2006; Watabe *et al.*, 2007; Dufour *et al.*, 2008; 2012). As predicted,  $^1\text{O}_2$  is bacteriocidal to cells lacking  $\sigma^E$  or RpoH<sub>II</sub> (Anthony *et al.*, 2005; Green and Donohue, 2006; Nuss *et al.*, 2010). Additional direct  $\sigma^E$  target genes are needed for rapid ChrR proteolysis, while others encode proteins that could potentially reduce products of olefin oxidation, prevent oxidation of unsaturated fatty acids, serve as electron carriers or repair damaged macromolecules (Dufour *et al.*, 2008; Ziegelhoffer and Donohue, 2009; Lemke *et al.*, 2014).

The ~145 direct RpoH<sub>II</sub> target genes (Fig. 5) encode bioenergetic enzymes that contain oxidant-sensitive metal centers (NADH dehydrogenase, etc.), metalloenzymes that synthesize cofactors for bioenergetic enzymes



**Fig. 5.**  $^1\text{O}_2$  activates a transcriptional cascade. Shown is the transcriptional cascade that is activated by the presence of  $^1\text{O}_2$  in *Rb. sphaeroides*. The master regulator,  $\sigma^E$ , directly activates transcription of 13 genes, one of which (*rpoH<sub>II</sub>*) encodes one of two *Rb. sphaeroides* alternative  $\sigma$  factors in the heat shock family. RpoH<sub>II</sub> directly activates ~145 genes; some 45 of which are also transcribed by RpoH<sub>I</sub>, the master regulator of the *Rb. sphaeroides* heat shock response. Data summarized from (Dufour *et al.*, 2012).

(tetrapyrroles, quinone, etc.) and glutathione-dependent enzymes that can repair oxidized macromolecules (Dufour *et al.*, 2012; Dufour and Donohue, 2012). Numerous  $\sigma^E$  and RpoH<sub>II</sub> targets have no known function (Dufour *et al.*, 2008; 2012; Dufour and Donohue, 2012), illustrating how little is known about the cellular and biological response to  $^1\text{O}_2$  and organoperoxide stress.

Unlike *E. coli*, which contains a single heat shock  $\sigma$  factor (Guisbert *et al.*, 2008), *Rb. sphaeroides* contains two homologs, RpoH<sub>I</sub> and RpoH<sub>II</sub> (Karls *et al.*, 1998; Green and Donohue, 2006).  $^1\text{O}_2$  is not bacteriocidal to  $\Delta\text{RpoH}_I$  cells, and RpoH<sub>I</sub> activity is increased during heat shock (Karls *et al.*, 1998; Green and Donohue, 2006; Dufour *et al.*, 2012). Indeed, many of the ~130 genes that are directly transcribed by RpoH<sub>I</sub> encode homologs of typical heat shock proteins (Green and Donohue, 2006; Dufour and Donohue, 2012), so it appears that its primary role is in thermal adaptation, similar to that of *E. coli*  $\sigma^{32}$  (Guisbert *et al.*, 2008). However, many of the 45 genes which are directly transcribed by both RpoH<sub>II</sub> and RpoH<sub>I</sub> (Fig. 5) encode proteins that could act in both  $^1\text{O}_2$  and heat stress (Green and Donohue, 2006; Dufour *et al.*, 2012; Dufour and Donohue, 2012).

Often, members of a stress regulon are part of a homeostatic loop that is needed to activate the response (Ades *et al.*, 2003; Guisbert *et al.*, 2008). This appears to be true for  $^1\text{O}_2$  stress, since mutants lacking  $\sigma^E$  target genes that produce furan-containing fatty acids are defective in increasing activity of this  $\sigma$  factor when they are exposed to this ROS (Nam *et al.*, 2013). However, cells lacking other ECF11 regulon members have normal activation of  $\sigma^E$  activity and rates of ChrR proteolysis in

the presence of  $^1\text{O}_2$  (Hendrischk *et al.*, 2007; Nam *et al.*, 2013; Nuss *et al.*, 2013).

#### Conservation of the ECF11 system across the bacterial phylogeny

Selective pressures experienced by cells in nature can dictate a relationship between signals and regulated genes, so the function of a given regulon may have evolved to accommodate variance in environmental conditions across cells with different lifestyles or habitats. For example, a comparative analysis of the *E. coli*  $\sigma^E$  regulon in nine  $\gamma$ -proteobacteria revealed the existence of a 'core regulon' that encodes functions involved in envelope stress, plus an 'extended regulon' that includes functions related to pathogenesis or symbiosis, and led to the proposal that host-microbe interactions also activate this stress response (Rhodius *et al.*, 2006).

A similar phylogenetic analysis of  $\sigma^E$ -ChrR homologs across bacterial divisions also suggested that this system evolved prior to the divergence of the  $\alpha$ - and  $\gamma$ -proteobacteria, and shows that it includes species which have both photosynthetic and non-photosynthetic lifestyles (Dufour *et al.*, 2008). By analyzing these genomes for genes orthologous to those transcribed by  $\sigma^E$  and promoters that contain the motif recognized by this Group IV alternative  $\sigma$ , it was found that many of the direct *Rb. sphaeroides*  $\sigma^E$ -ChrR regulon members were present and predicted to contain a  $\sigma^E$  promoter in these diverse species. The  $\sigma^E$  targets that were most conserved across species, which comprise a so-called 'core  $\sigma^E$ -ChrR regulon' of ~8 genes, include the *rpoEchrR* operon and genes

involved in synthesis of furan fatty acids that are required for ChrR turnover in the presence of  $^1\text{O}_2$  (Dufour *et al.*, 2008). Therefore, it is possible that the photosynthetic and non-photosynthetic species which contain  $\sigma^E$ -ChrR homologs both encounter  $^1\text{O}_2$  in nature (Dufour *et al.*, 2008). The observation that proteins required for ChrR turnover in the presence of  $^1\text{O}_2$  are conserved members of the core  $\sigma^E$  regulon gene suggests that a similar homeostatic feedback loop activates this stress response in other bacteria (Dufour *et al.*, 2008; Nam *et al.*, 2013; Lemke *et al.*, 2014). As predicted by these phylogenetic analyses, the *Caulobacter crescentus*  $\sigma^E$ -ChrR system was rapidly activated by  $^1\text{O}_2$  and organic hydroperoxides and exhibited a slower response to other inducers (Lourenco and Gomes, 2009), suggesting other signals or pathways activate the ECF11 regulon in this and other species.

Comparative genomics also identified another group of genes directly transcribed by  $\sigma^E$  that are not highly conserved among bacterial species and constitute an 'extended  $\sigma^E$ -ChrR regulon' (Dufour *et al.*, 2008). This extended  $\sigma^E$ -ChrR regulon contains numerous genes of unknown function, illustrating the potential to reveal new biology by elucidating their function. There are also gene sets which are only part of the extended  $\sigma^E$ -ChrR regulon in selected bacteria, suggesting they encode functions associated with the lifestyle or ecological niche of these organisms (Dufour *et al.*, 2008).

### Future directions

Like other optogenetic circuits (Zhao *et al.*, 2018), one advantage of studying *Rb. sphaeroides*  $\sigma^E$ -ChrR is the ease of controlling production of the stimulating signal,  $^1\text{O}_2$ , by the presence or absence of light (Anthony *et al.*, 2005). In addition, biochemical, genetic, genomic and computational methods were combined to reveal control principles of this system, define processes that are impacted by  $^1\text{O}_2$  formation, and predicted the properties of  $\sigma^E$ -ChrR networks in other bacteria that contain ECF11 proteins (Newman *et al.*, 1999; Anthony *et al.*, 2003; Campbell *et al.*, 2007; Dufour *et al.*, 2008; 2012; Greenwell *et al.*, 2011; Dufour and Donohue, 2012; Nam *et al.*, 2013; Lemke *et al.*, 2014).

Despite the knowledge accumulated by studying *Rb. sphaeroides*  $\sigma^E$ -ChrR, major gaps remain in our understanding on important aspects of its function. For example, to understand how *Rb. sphaeroides*  $\sigma^E$  activity is increased, information is needed on the events and proteins that regulate ChrR turnover in the presence of  $^1\text{O}_2$ . Other needs include insight into a direct interaction of  $^1\text{O}_2$ , peroxidation products of fatty acids, or other biomolecules with the ChrR-ASD and ChrR-CLD, the protease(s) that degrade ChrR, and the signal transduction pathway used

to promote turnover of a cytoplasmic anti- $\sigma$  factor by a membrane ROS. In addition, identifying the function of genes that are directly transcribed by  $\sigma^E$ -containing RNA polymerase but only found in selected species (extended members of the  $\sigma^E$  regulon) can provide needed insight into stress response functions associated with lifestyles or ecological niches of these bacteria.

It is crucial to point out that many of the above questions illustrate knowledge gaps for other Group IV alternative  $\sigma$ s, so it is likely that answers obtained by analyzing ECF11 proteins will have broad applicability to other regulatory networks. In this way, analysis of the Group IV alternative  $\sigma$ s will continue to illuminate new features of biological processes across the bacterial phylogeny.

### Accession numbers

The atomic coordinates for proteins discussed are deposited in the Protein Data Bank (<http://www.pdb.org/>) under ID codes 2Q1Z, 2Z2S, and 1OR7. The gene expression and chromatin immunoprecipitation data sets discussed can be found in the Gene Expression Omnibus through series accession number GSE39806 (<https://www.ncbi.nlm.nih.gov/geo/>).

### Acknowledgements

Preparation of this MicroReview and our ongoing studies on furan fatty acid synthesis is funded by the DOE Great Lakes Bioenergy Research Center (DOE BER Office of Science DE-FC02-07ER64494 and DE-SC0018409). I thank the students, trainees and staff in the Donohue lab who contributed to work on this topic, reviewers of past papers who made important suggestions, and colleagues from around the globe for sharing ideas or collaborating on structural, genomic, and other analyses summarized in this review.

### References

- Ades, S.E., Grigorova, I.L. and Gross, C.A. (2003) Regulation of the alternative sigma factor  $\sigma^E$  during initiation, adaptation, and shutoff of the extracytoplasmic heat shock response in *Escherichia coli*. *Journal of Bacteriology*, **185**, 2512–2519.
- Alba, B.M., Leeds, J.A., Onufryk, C., Lu, C.Z. and Gross, C.A. (2002) DegS and YaeL participate sequentially in the cleavage of RseA to activate the  $\sigma^E$ -dependent extracytoplasmic stress response. *Genes & Development*, **16**, 2156–2168.
- Antelmann, H. and Helmann, J.D. (2011) Thiol-based redox switches and gene regulation. *Antioxidants & Redox Signaling*, **14**, 1049–1063.
- Anthony, J.R., Green, H.A. and Donohue, T.J. (2003) Purification of *Rhodobacter sphaeroides* RNA polymerase and its sigma factors. *Methods in Enzymology*, **370**, 54–65.



- Anthony, J.R., Newman, J.D. and Donohue, T.J. (2004) Interactions between the *Rhodobacter sphaeroides* ECF sigma factor,  $\sigma^E$ , and its anti-sigma factor. *ChrrR. J. Mol. Biol.*, **341**, 345–360.
- Anthony, J.R., Warczak, K.L. and Donohue, T.J. (2005) A transcriptional response to singlet oxygen, a toxic by-product of photosynthesis. *Proceedings of the National Academy of Sciences*, **102**, 6502–6507.
- Bae, J.-B., Park, J.-H., Hahn, M.-Y., Kim, M.-S. and Roe, J.-H. (2004) Redox-dependent changes in RsrA, an anti-sigma factor in *Streptomyces coelicolor*: zinc release and disulfide bond formation. *Journal of Molecular Biology*, **335**(2), 425–435.
- Berghoff, B.A., Glaeser, J., Sharma, C.M., Vogel, J. and Klug, G. (2009) Photooxidative stress-induced and abundant small RNAs in *Rhodobacter sphaeroides*. *Molecular Microbiology*, **74**, 1497–1512.
- Borisov, V.B., Gennis, R.B., Hemp, J. and Verkhovskiy, M.I. (2011) The cytochrome bd respiratory oxygen reductases. *Biochimica et Biophysica Acta (BBA) - Bioenergetics*, **1807**, 1398–1413.
- Brzezinski, P. and Gennis, R.B. (2008) Cytochrome c oxidase: exciting progress and remaining mysteries. *Journal of Bioenergetics and Biomembranes*, **40**, 521–531.
- Bueno, E., Mesa, S., Bedmar, E.J., Richardson, D.J. and Delgado, M.J. (2012) Bacterial adaptation of respiration from oxic to microoxic and anoxic conditions: redox control. *Antioxidants & redox signaling*, **16**, 819–852.
- Campbell, E.A., Muzzin, O., Chlenov, M., Sun, J.L., Olson, C.A., Weinman, O., *et al.* (2002) Structure of the bacterial RNA polymerase promoter specificity sigma subunit. *Molecular Cell*, **9**, 527–539.
- Campbell, E., Tupy, J., Gruber, T., Wang, S., Sharp, M., Gross, C. and Darst, S. (2003) Crystal structure of *Escherichia coli*  $\sigma^E$  with the cytoplasmic domain of its anti-sigma RseA. *Molecular Cell*, **11**, 1067–1078.
- Campbell, E.A., Greenwell, R., Anthony, J.R., Wang, S., Lim, L., Das, K., *et al.* (2007) A conserved structural module regulates transcriptional responses to diverse stress signals in bacteria. *Molecular Cell*, **27**, 793–805.
- Chaba, R., Grigorova, I.L., Flynn, J.M., Baker, T.A. and Gross, C.A. (2007) Design principles of the proteolytic cascade governing the  $\sigma^E$ -mediated envelope stress response in *Escherichia coli*: keys to graded, buffered, and rapid signal transduction. *Genes & Development*, **21**, 124–136.
- Chabert, V., Lebrun, V., Lebrun, C., Latour, J.-M. and Sénèque, O. (2019) Model peptide for anti-sigma factor domain HHCC zinc fingers: high reactivity toward  $^1\text{O}_2$  leads to domain unfolding. *Chemical Science*, **12**, 3608–3615.
- Cogdell, R.J. (2000) How carotenoids protect bacterial photosynthesis. *Phil. Trans. R. Soc. Lond. B*, **355**, 1345–1349.
- Danon, A., Miersch, O., Felix, G., Camp, R.G.L. and Apel, K. (2005) Concurrent activation of cell death-regulating signalling pathways by singlet oxygen in Arabidopsis thaliana. *The Plant Journal*, **41**, 68–80.
- Davies, M. (2004) Reactive species formed on proteins exposed to singlet oxygen. *Photochemical & Photobiological Sciences*, **3**, 17–25.
- Dogra, V., Rochaix, J.D. and Kim, C. (2018) Singlet oxygen-triggered chloroplast-to-nucleus retrograde signalling pathways: an emerging perspective. *Plant, Cell & Environment*, **41**, 1727–1738.
- Donohue, T.J. and Kiley, P.J. (2011) Bacterial responses to  $\text{O}_2$  limitation. In: Storz, G. and Hengge, R. (Eds.) *Bacterial Stress Responses*. Washington, DC: American Society for Microbiology, pp. 175–189.
- Dufour, Y. and Donohue, T.J. (2012) Signal correlations in ecological niches can shape the organization and evolution of bacterial gene regulatory networks. In: Poole, R.K. (Ed.) *Advances in Microbial Physiology*. London: Elsevier, pp. 1–36.
- Dufour, Y.S., Landick, R. and Donohue, T.J. (2008) Organization and evolution of the biological response to singlet oxygen stress. *Journal of Molecular Biology*, **383**, 713–730.
- Dufour, Y., Kiley, P.J. and Donohue, T.J. (2010) Reconstruction of the core and extended regulons of global transcription factors. *PLoS Genetics*, **6**, e1001027.
- Dufour, Y.S., Imam, S., Koo, B.-M., Green, H.A. and Donohue, T.J. (2012) Convergence of the transcriptional responses to heat shock and singlet oxygen stresses. *PLoS Genetics*, **8**, e1002929.
- Estevam, M.L., Nascimento, O.R., Baptista, M.S., Di Mascio, P., Prado, F.M., Faljoni-Alario, A., *et al.* (2004) Changes in the spin state and reactivity of cytochrome c induced by photochemically generated singlet oxygen and free radicals. *Journal of Biological Chemistry*, **279**, 39214–39222.
- Feklistov, A., Sharon, B.D., Darst, S.A. and Gross, C.A. (2014) Bacterial sigma factors: a historical, structural, and genomic perspective. *Annual Review of Microbiology*, **68**, 357–376.
- Foyer, C.H. and Noctor, G. (2005) Redox homeostasis and antioxidant signaling: a metabolic interface between stress perception and physiological responses. *The Plant Cell*, **17**, 1866–1875.
- Frank, H.A. and Brudvig, G.W. (2004) Redox functions of carotenoids in photosynthesis. *Biochemistry*, **43**, 8605–8615.
- Frick, K., Schulte, M. and Friedrich, T. (2015) Reactive oxygen species production by *Escherichia coli* respiratory complex I. *Biochemistry*, **54**, 2799–2801.
- Fryer, M.J., Oxborough, K., Mullineaux, P.M. and Baker, N.R. (2002) Imaging of photo-oxidative stress responses in leaves. *Journal of Experimental Botany*, **53**, 1249–1254.
- Gennis, R.B.a.V.S. (1986) Respiration. In: Neidhardt, F.C. (Ed.) *Escherichia coli and Salmonella Cellular and Molecular Biology*. Washington, DC: ASM Press, pp. 217–261.
- Girotti, A.W. and Kriska, T. (2004) Role of lipid peroxides in photo-oxidative stress signalling. *Antioxidants & Redox Signalling*, **6**, 301–310.
- Glaeser, J., Zobawa, M., Lottspeich, F. and Klug, G. (2007) Protein synthesis patterns reveal a complex regulatory response to singlet oxygen in *Rhodobacter*. *Journal of Proteome Research*, **6**, 2460–2471.
- Glaeser, J., Nuss, A.M., Berghoff, B.A. and Klug, G. (2011) Singlet oxygen stress in microorganisms. In: Robert, K.P. (Ed.) *Advances in Microbial Physiology*. Oxford, UK: Academic Press, pp. 141–173.
- Godley, B.F., Shamsi, F.A., Liang, F.-Q., Jarrett, S.G., Davies, S. and Boulton, M. (2005) Blue light induces

- mitochondrial DNA damage and free radical production in epithelial cells. *Journal of Biological Chemistry*, **280**, 21061–21066.
- Green, H.A. and Donohue, T.J. (2006) Activity of *Rhodobacter sphaeroides* RpoH<sub>II</sub>, a second member of the heat shock sigma factor family. *Journal of Bacteriology*, **188**, 5712–5721.
- Greenwell, R.S., Nam, T.W. and Donohue, T.J. (2011) Aspects of the zinc metalloprotein ChrR required for dissociation of  $\sigma^E$ /ChrR complexes. *Journal of Molecular Biology*, **407**, 477–491.
- Guisbert, E., Yura, T., Rhodius, V.A. and Gross, C.A. (2008) Convergence of molecular, modeling, and systems approaches for an understanding of the *Escherichia coli* heat shock response. *Microbiology and Molecular Biology Reviews*, **72**, 545–554.
- Hendrischk, A.-K., Braatsch, S., Glaeser, J. and Klug, G. (2007) The *phrA* gene of *Rhodobacter sphaeroides* encodes a photolyase and is regulated by singlet oxygen and peroxide in a  $\sigma^E$ -dependent manner. *Microbiology*, **153**, 1842–1851.
- Jakob, U., Eser, M. and Bardwell, J.C. (2000) Redox switch of Hsp33 has a novel zinc-binding motif. *Journal of Biological Chemistry*, **275**, 38302–38310.
- Karls, R.K., Brooks, J., Rossmeissl, P., Luedke, J. and Donohue, T.J. (1998) Metabolic roles of a *Rhodobacter sphaeroides* member of the  $\sigma^{32}$  family. *Journal of Bacteriology*, **180**, 10–19.
- Kerr, R.A. (2005) Earth science: the story of O<sub>2</sub>. *Science*, **308**, 1730–1732.
- Khuri, S., Bakker, F.T. and Dunwell, J.M. (2001) Phylogeny, function, and evolution of the cupins, a structurally conserved, functionally diverse superfamily of proteins. *Molecular Biology and Evolution*, **18**(4), 593–605.
- Kiley, P.J. and Storz, G. (2004) Exploiting thiol modifications. *PLoS Biology*, **2**, 1714–1717.
- Kim, S.J., Jeong, D.G., Chi, S.W., Lee, J.S. and Ryu, S.E. (2001) Crystal structure of proteolytic fragments of the redox-sensitive Hsp33 with constitutive chaperone activity. *Natural Structural Biology*, **8**, 459–466.
- Kochevar, I. (2004) Singlet oxygen signaling: from intimate to global. *Science Signaling*, **2004**(221), pe7.
- Lemke, R.A.S., Peterson, A.C., Ziegelhoffer, E.C., Westphall, M.S., Tjellström, H., Coon, J.J. and Donohue, T.J. (2014) Synthesis and scavenging role of furan fatty acids. *Proceedings of the National Academy of Sciences*, **111**, E3450–3457.
- Lourenco, R.F. and Gomes, S.L. (2009) The transcriptional response to cadmium, organic hydroperoxide, singlet oxygen and UV-A mediated by the  $\sigma^E$ -ChrR system in *Caulobacter crescentus*. *Molecular Microbiology*, **72**, 1159–1170.
- Mittler, R., Vanderauwera, S., Gollery, M. and Van Breusegem, F. (2004) Reactive oxygen gene network of plants. *Trends in Plant Science*, **9**, 490–498.
- Nam, T.W., Ziegelhoffer, E.C., Lemke, R.A.S. and Donohue, T.J. (2013) Proteins needed to activate a transcriptional response to the reactive oxygen species singlet oxygen. *MBio*, **4**, e00541-12.
- Newman, J. (2001) *The sigma factor/anti-sigma factor pair,  $\sigma^E$ /ChrR, in Rhodobacter sphaeroides*. PhD Thesis, UW-Madison.
- Newman, J.D., Falkowski, M.J., Schilke, B.A., Anthony, L.C. and Donohue, T.J. (1999) The *Rhodobacter sphaeroides* ECF sigma factor,  $\sigma^E$ , and the target promoters *cydA* P3 and *rpoE* P1. *Journal of Molecular Biology*, **294**, 307–320.
- Newman, J.D., Anthony, J.R. and Donohue, T.J. (2001) The importance of zinc-binding to the function of *Rhodobacter sphaeroides* ChrR as an anti-sigma factor. *Journal of Molecular Biology*, **313**, 485–499.
- Nishiyama, Y., Allakhverdiev, S.I., Yamamoto, H., Hayashi, H. and Murata, N. (2004) Singlet oxygen inhibits the repair of Photosystem II by suppressing the translation elongation of the D1 protein in *Synechocystis* sp. PCC 6803. *Biochemistry*, **43**, 11321–11330.
- Nuss, A.M., Glaeser, J. and Klug, G. (2009) RpoHII activates oxidative-stress defense systems and is controlled by RpoE in the singlet oxygen-dependent response in *Rhodobacter sphaeroides*. *Journal of Bacteriology*, **191**, 220–230.
- Nuss, A.M., Glaeser, J., Berghoff, B.A. and Klug, G. (2010) Overlapping alternative sigma factor regulons in the response to singlet oxygen in *Rhodobacter sphaeroides*. *Journal of Bacteriology*, **192**, 2613–2623.
- Nuss, A.M., Adnan, F., Weber, L., Berghoff, B.A., Glaeser, J. and Klug, G. (2013) DegS and RseP homologous proteases are involved in singlet oxygen dependent activation of RpoE in *Rhodobacter sphaeroides*. *PLoS ONE*, **8**, e79520.
- Nymann, E.S. and Hynninen, P.H. (2004) Research advances in the use of tetrapyrrolic photosensitizers for photodynamic therapy. *Journal of Photochemistry and Photobiology B: Biology*, **73**, 1–28.
- Paget, M.S.B. and Buttner, M.J. (2003) Thiol-based regulatory switches. *Annual Review of Genetics*, **37**, 91–121.
- Paget, M.S., Bae, J.B., Hahn, M.Y., Li, W., Kleanthous, C., Roe, J.H. and Buttner, M.J. (2001a) Mutational analysis of RsrA, a zinc-binding anti-sigma factor with a thiol-disulphide redox switch. *Molecular Microbiology*, **39**, 1036–1047.
- Paget, M.S., Molle, V., Cohen, G., Aharonowitz, Y. and Buttner, M.J. (2001b) Defining the disulphide stress response in *Streptomyces coelicolor* A3(2): identification of the  $\sigma^R$  regulon. *Molecular Microbiology*, **42**, 1007–1020.
- Pinto, D., Dürr, F., Froriep, F., Araújo, D., Liu, Q. and Mascher, T. (2019) Extracytoplasmic function  $\sigma$  factors can be implemented as robust heterologous genetic switches in *Bacillus subtilis*. *iScience*, **13**, 380–390.
- Ragàs, X., He, X., Agut, M., Roxo-Rosa, M., Gonsalves, A., Serra, A. and Nonell, S. (2013) Singlet oxygen in antimicrobial photodynamic therapy: photosensitizer-dependent production and decay in *E. coli*. *Molecules*, **18**, 2712–2725.
- Rajasekar, K.V., Zdanowski, K., Yan, J., Hopper, J.T.S., Francis, M.-L.R., Seepersad, C., et al. (2016) The anti-sigma factor RsrA responds to oxidative stress by re-burying its hydrophobic core. *Nature Communications*, **7**, 12194.
- Raman, B., Siva Kumar, L.V., Ramakrishna, T. and Mohan Rao, C. (2001) Redox-regulated chaperone function and conformational changes of *Escherichia coli* Hsp33. *FEBS Letters*, **489**, 19–24.
- Ramel, F., Birtic, S., Ginies, C., Soubigou-Taconnat, L., Triantaphylidès, C. and Havaux, M. (2012) Carotenoid

- oxidation products are stress signals that mediate gene responses to singlet oxygen in plants. *Proceedings of the National Academy of Sciences*, **109**, 5535–5540.
- Raymond, J., Zhaxybayeva, O., Gogarten, J.P. and Blankenship, R.E. (2003) Evolution of photosynthetic prokaryotes: a maximum-likelihood mapping approach. *Philosophical Transactions: Biological Sciences*, **358**, 223–230.
- Rhodijs, V.A., Suh, W.C., Nonaka, G., West, J. and Gross, C.A. (2006) Conserved and variable functions of the  $\sigma^E$  stress response in related genomes. *PLoS Biology*, **4**, 43–59.
- Rhodijs, V.A., Segall-Shapiro, T.H., Sharon, B.D., Ghodasara, A., Orlova, E., Tabakh, H., *et al.* (2013) Design of orthogonal genetic switches based on a crosstalk map of  $\sigma$ 's, anti- $\sigma$ 's, and promoters. *Molecular Systems Biology*, **9**, 702.
- Rinalducci, S., Pedersen, J.Z. and Zolla, L. (2004) Formation of radicals from singlet oxygen produced during photoinhibition of isolated light-harvesting proteins of photosystem II. *Biochimica et Biophysica Acta (BBA) - Bioenergetics*, **1608**, 63–73.
- Rosner, J.L. and Storz, G. (1997) Regulation of bacterial responses to oxidative stress. *Current Topics in Cellular Regulation*, **35**, 163–177.
- Schulz, J.B., Lindenau, J., Seyfried, J. and Dichgans, J. (2000) Glutathione, oxidative stress and neurodegeneration. *European Journal of Biochemistry*, **267**, 4904–4911.
- Sineva, E., Savkina, M. and Ades, S.E. (2017) Themes and variations in gene regulation by extracytoplasmic function (ECF) sigma factors. *Current Opinion in Microbiology*, **36**, 128–137.
- Soo, R.M., Hemp, J. and Hugenholtz, P. (2019) Evolution of photosynthesis and aerobic respiration in the cyanobacteria. *Free Radical Biology and Medicine*, in press. <https://doi.org/10.1016/j.freeradbiomed.2019.03.029>
- Staron, A., Sofia, H.J., Dietrich, S., Ulrich, L.E., Liesegang, H. and Mascher, T. (2009) The third pillar of bacterial signal transduction: classification of the extracytoplasmic function (ECF) sigma factor protein family. *Molecular Microbiology*, **74**, 557–581.
- Stief, T.W. (2003) The physiology and pharmacology of singlet oxygen. *Medical Hypotheses*, **60**(4), 567–572.
- Szabó, I., Bergantino, E. and Giacometti, G.M. (2005) Light and oxygenic photosynthesis: energy dissipation as a protection mechanism against photo-oxidation. *EMBO Reports*, **6**, 629–634.
- Tavano, C.L. and Donohue, T.J. (2006) Development of the bacterial photosynthetic apparatus. *Current Opinion in Microbiology*, **9**, 625–631.
- Taverne, Y.J., Merkus, D., Bogers, A.J., Halliwell, B., Duncker, D.J. and Lyons, T.W. (2018) Reactive oxygen species: radical factors in the evolution of animal life. *BioEssays*, **40**, 1700158.
- Triantaphylides, C. and Havaux, M. (2009) Singlet oxygen in plants: production, detoxification and signaling. *Trends in Plant Science*, **14**, 219–228.
- Uchoa, A.F., Knox, P.P., Turchielle, R., Seifullina, N.K. and Baptista, M.S. (2008) Singlet oxygen generation in the reaction centers of *Rhodobacter sphaeroides*. *European Biophysics Journal*, **37**, 843–850.
- Watabe, N., Ishida, Y., Ochiai, A., Tokuoka, Y. and Kawashima, N. (2007) Oxidation decomposition of unsaturated fatty acids by singlet oxygen in phospholipid bilayer membranes. *Journal of Oleo Science*, **56**, 73–80.
- Zdanowski, K., Doughty, P., Jakimowicz, P., O'Hara, L., Buttner, M.J., Paget, M.S.B. and Kleanthous, C. (2006) Assignment of the zinc ligands in RsrA, a redox-sensing ZAS protein from *Streptomyces coelicolor*. *Biochemistry*, **45**, 8294–8300.
- Zhao, E.M., Zhang, Y., Mehl, J., Park, H., Lalwani, M.A., Toettcher, J.E. and Avalos, J.L. (2018) Optogenetic regulation of engineered cellular metabolism for microbial chemical production. *Nature*, **555**, 683.
- Zheng, M. and Storz, G. (2000) Redox sensing by prokaryotic transcription factors. *Biochemical Pharmacology*, **59**(1), 1–6.
- Ziegelhoffer, E.C. and Donohue, T.J. (2009) Bacterial responses to photo-oxidative stress. *Nature Reviews Microbiology*, **7**, 856–863.